

co-developed by  
**AbodeZ +  
Acorn Holdings**



in association with:  
**Piatt Associates**  
**Hope Legal Law Office**  
**Adams & Rafferty**  
**Vanasse Hangen Brustlin**  
**PFS Land Surveying, inc.**  
**EBI Consulting**  
**Han Design Studio**







city of cambridge



- LEGEND**
- Rail
  - Building Footprints
  - Paved Surfaces
    - Paved Roads
    - Bridges
    - Unpaved Roads
    - Unpaved Parking
    - Sidewalks
    - Driveways
    - Alleys
    - Other Paved Surface
    - Public Footpath









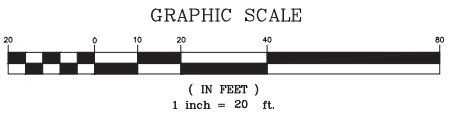
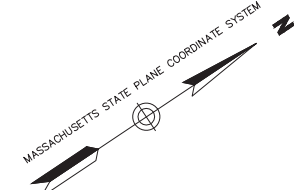
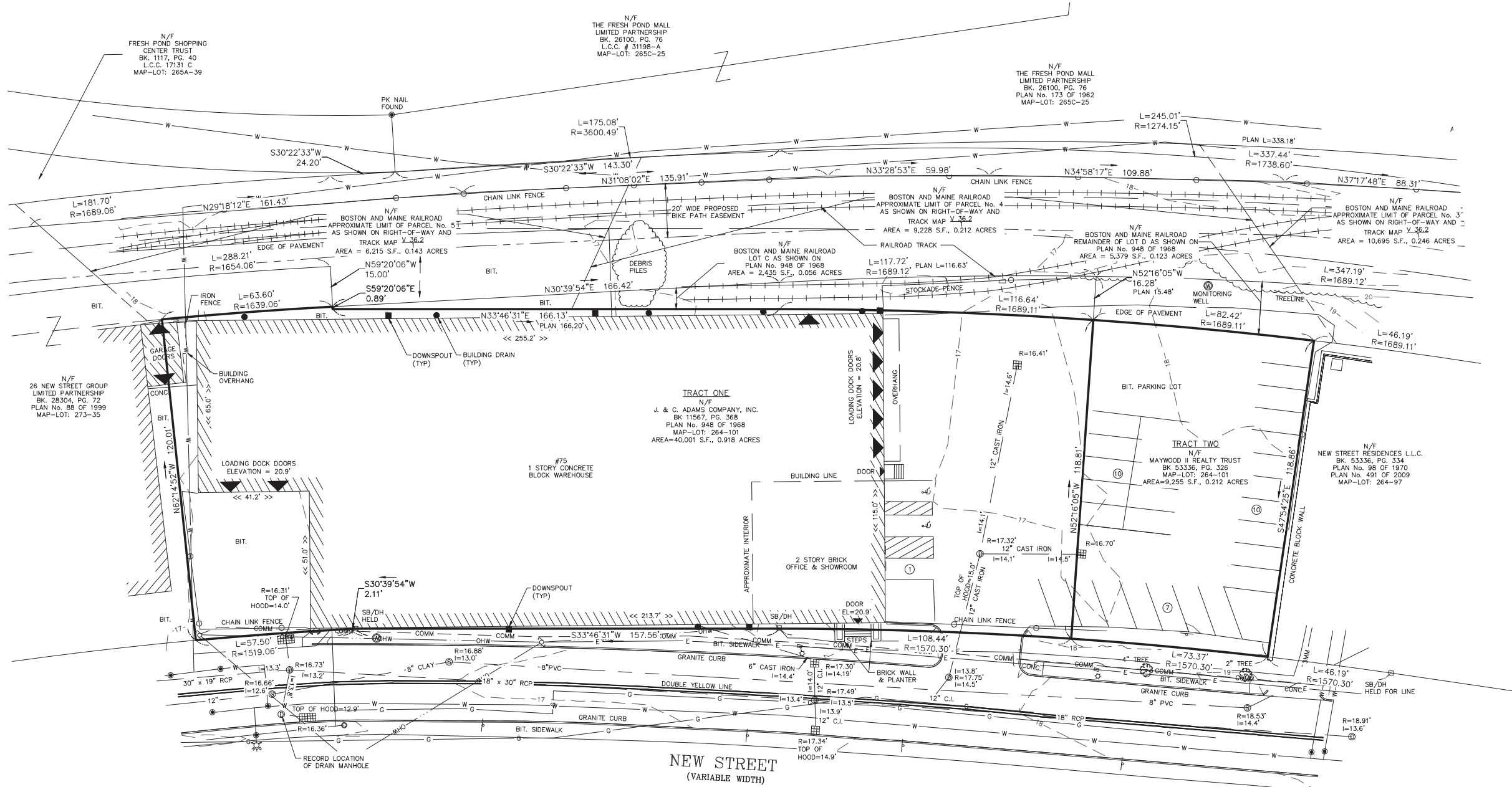
75 New Street, Cambridge  
SPECIAL PERMIT APPLICATION

October 17, 2013









No.	Revision	Date	Appr.
1	Water Line and Proposed Easement	5/9/2013	BGP

Designed by \_\_\_\_\_ Drawn by WWS Checked by BGP  
 CAD checked by \_\_\_\_\_ Approved by \_\_\_\_\_  
 Scale \_\_\_\_\_ Date \_\_\_\_\_  
 Project Title \_\_\_\_\_

**Legend**

Edge Of Pavement		Monument		Gas Valve	
Water Line		Iron Pipe or Bar		Water Valve	
Gas Line		Manhole		Monitor Well	
Underground Telephone Line		Utility Pole		Hydrant	
Underground Electric Line		Deciduous Tree		Billiard	
Overhead Wire		Evergreen Tree		Welland Flag Number	
Storm/Sanitary Sewer		Catch Basin		Sampling Station Location	
Property Line		Welland Flag		Photograph Location And Direction Of View	
Contour		Light Post			
Curb		No. Parking Spaces			
Metal Fence					
Wooden Fence					
Wood Line					

**Notes**

1. Based On Field Work Performed March 2012.
2. Coordinate System: MA State Plane.
3. Control: Established With Global Positioning Systems.
4. Horizontal Datum: NAD83
5. Vertical Datum: Cambridge City Base.
6. The Site Resides in Flood Zone X As Shown On FIRM Map No. 25017C0419E, Community No. 250186, Panel 0419E of 656.
7. Zoning Classification: IA-1
8. Utilities Shown Are Based On Field Locations And Record Plans. The Locations Are Not Warranted To Be Exact. Call Dig Safe Before You Dig: 1-888-DIG-SAFE.

*Signature*



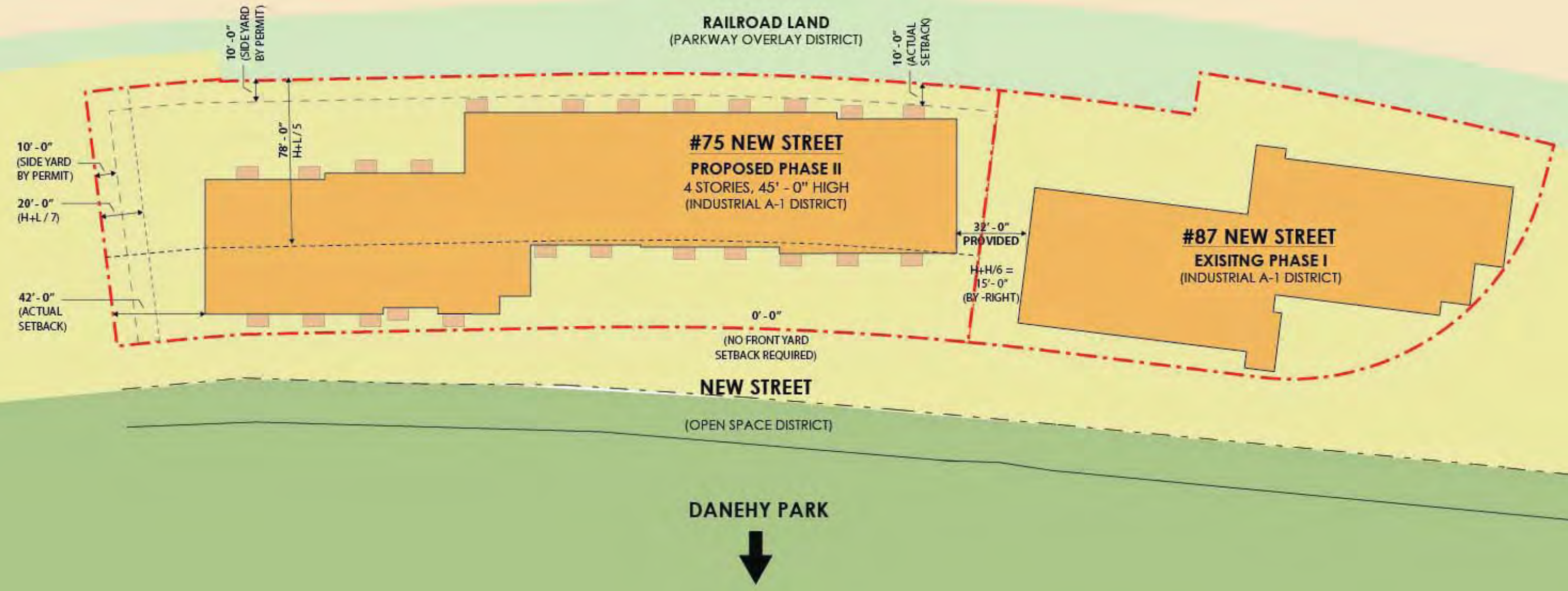
_____	Drawing Number
_____	Sheet of
_____	Project Number



**75 New Street, Cambridge  
SPECIAL PERMIT APPLICATION**

October 17, 2013

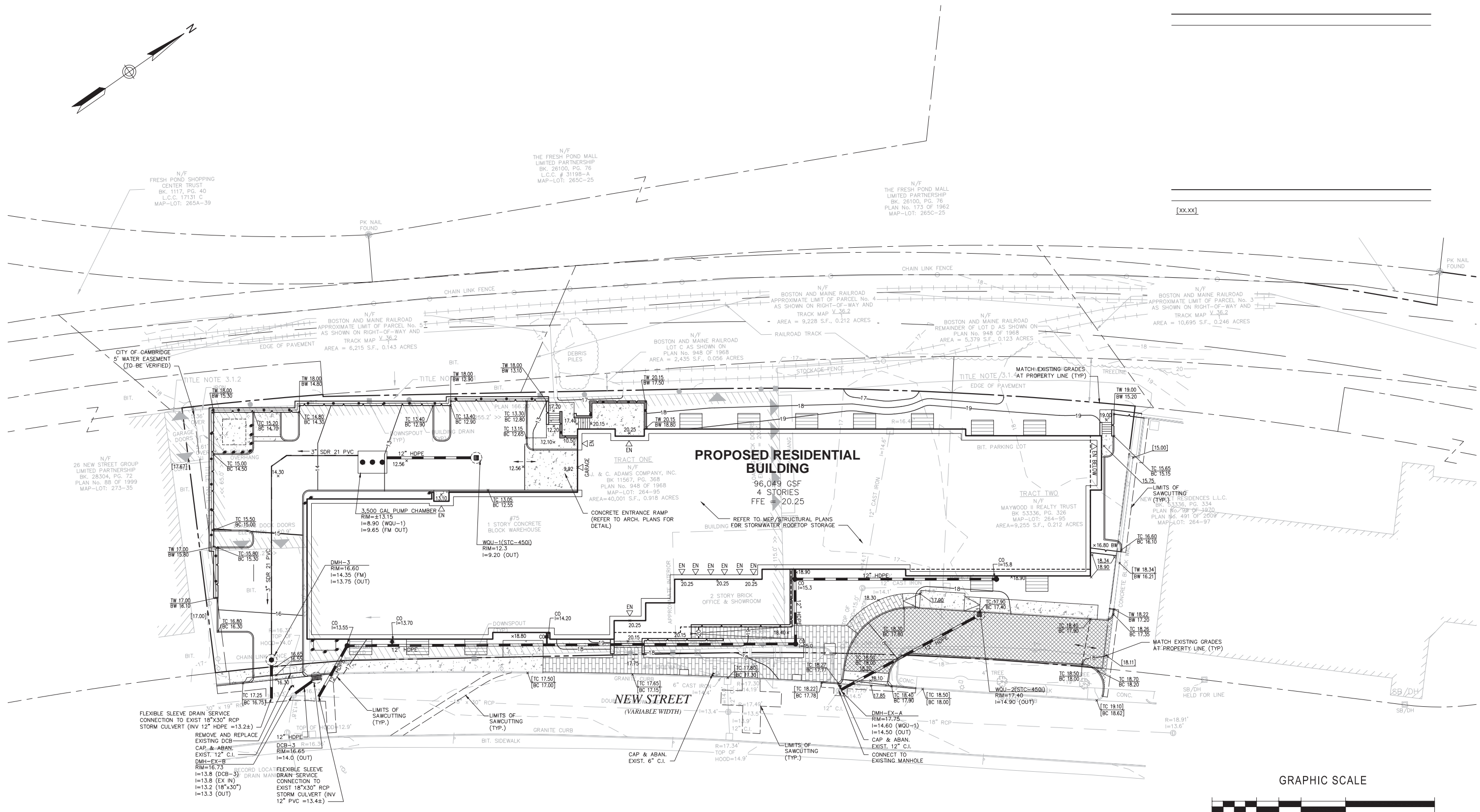
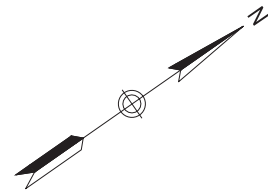
  
**FRESH POND SHOPPING CENTER**  
 (ALEWIFE OVERLAY DISTRIC 5/ BUSINESS A DISTRICT)











**PROPOSED RESIDENTIAL BUILDING**  
 96,049 GSF  
 4 STORIES  
 FFE = 20.25

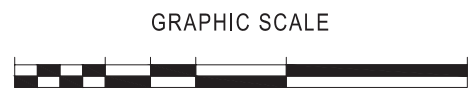
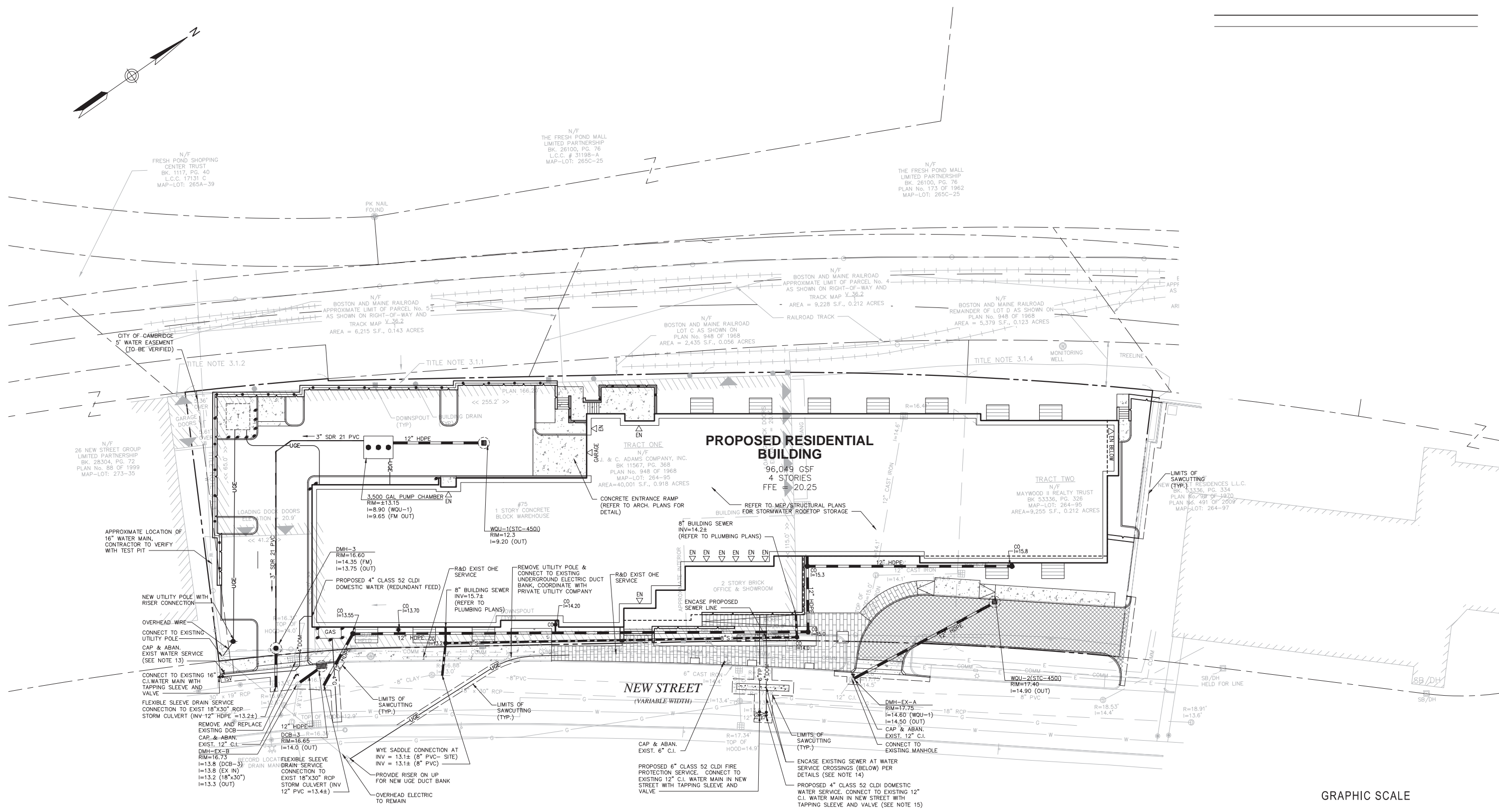
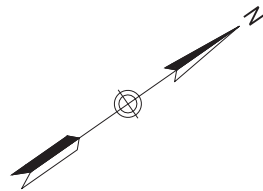
**NEW STREET**  
 (VARIABLE WIDTH)



75 New Street, Cambridge  
 SPECIAL PERMIT APPLICATION

October 17, 2013



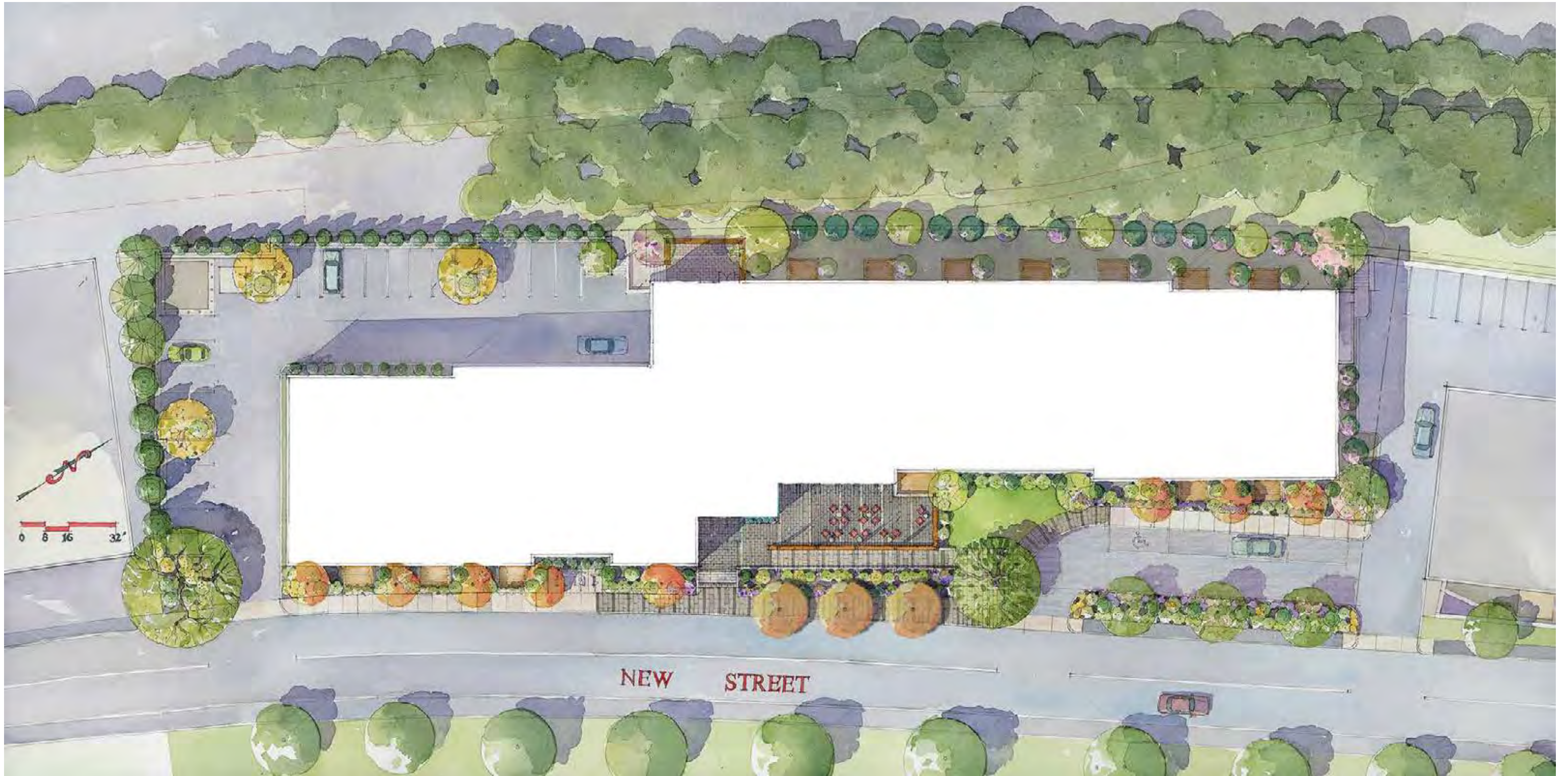


75 New Street, Cambridge  
SPECIAL PERMIT APPLICATION

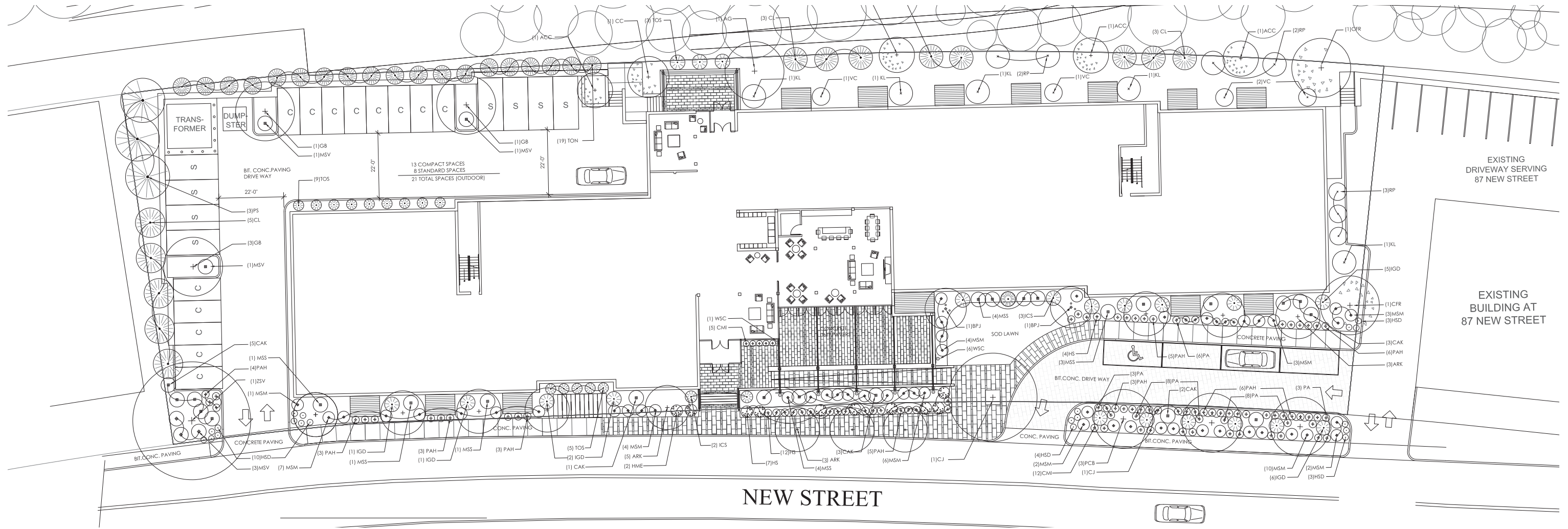
October 17, 2013











77 PARK - PLANT LIST:

QTY.	SYM.	BOTANICAL NAME	COMMON NAME	SIZE	MATURITY	NOTES
<b>TREES</b>						
1	AG	<i>Acer griseum</i>	Paperbark Maple	11/2" - 2' Cal.	20' - 30'H	Chinamon-brown bark exfoliates coppery underbark
8	ARK	<i>Acer rubrum 'Karpick'</i>	Upright Red Maple	1" - 21/2" Cal.	45' H	20' Spread, Summer dark green - yellow to red in Autumn
4	ACA	<i>Amelanchier canadensis 'Autumn Brilliance'</i>	Autumn Shadobush	5-6' Height	20' height	White flowers in May, multi stems, brilliant fall color
2	BPJ	<i>Betula platyphylla japonica 'Whitespire'</i>	Multistem Asian White Birch	8-12' Height	25-40'H	Silvery White Bark
1	CC	<i>Cercis canadensis</i>	Eastern Redbud	1-2" Cal.	15-20' H	20-30' spread, Rose-pink flowers along branches spring
1	CJ	<i>Cercidiphyllum japonicum</i>	Katsura Tree	2-3" Cal.	45-60' H	25-35' spread, Bronze in Spring - green - yellow scarlet
2	CFR	<i>Cornus florida 'rubra'</i>	Pink Flowering Dogwood	1-2" Cal.	15-25' H	Dark pink new flower bracts turn pink bloom in May
13	CL	<i>x Cupressocyparis leylandii</i>	Leyland Cypress	6-8' Height	60-70' H	6-12' spread, very dense blue green screen tree
3	GB	<i>Ginkgo biloba 'Autumn Gold'</i>	Autumn Gold Ginkgo	6-7' Height	50-60' H	Round Crown shape, bright yellow foliage
3	PCB	<i>Pyrus calleryana 'Bradford'</i>	Bradford Pear	2-3" Cal.	25-35' H	30' spread, white flower in spring, purple-red foliage
3	PS	<i>Pinus strobus</i>	White Pine	6-7' Height	50-80' H	20-40' spread, blue green needles
19	TON	<i>Thuja occidentalis 'nigra'</i>	Dark American Arborvitae	2-1/2" Cal.	40-50' H	5-8' spread, very hardy & dense dark green
1	ZSV	<i>Zelkova serrata 'Village Green'</i>	Japanese Zelkova	2-3" Cal.	50-60' H	40-50' spread, Upright Vase shape, green turn rusty red

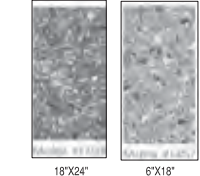
GENERAL NOTES:

- ENSURE PROPER DRAINAGE OF ALL PLANTING BEDS/PITS
- ALL TREES SHALL BE OF SPECIMEN QUALITY.
- ALL SUBGRADES TO RECEIVE LANDSCAPE SOIL SHALL BE CROSS-RIPPED TO A DEPTH OF 12" TO AVOID COMPACTION

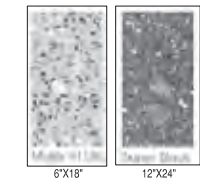
<b>SHRUBS</b>						
9	HME	<i>Hydrangea macrophylla 'Endless Summer'</i>	Endless Summer Hydrangea	3 Gal.	4-6'H	Blue Flowers in July-August
5	ICS	<i>Ilex crenata 'Stedds'</i>	Upright Steed Japanese Holly	30-36" H	4-8' H	4' Spread, Lustrous dark green
15	IGD	<i>Ilex glabra 'Densa'</i>	Densa Inkberry	2-3" H	4-6' H	4' Spread, Rounded shiny dark green foliage all year
5	KL	<i>Kalmia latifolia 'Olympic Fire'</i>	Mountain Laurel	2-3" H	8-10' H	5-8' spread red buds, pink flowers
7	RP	<i>Rhododendron 'PJM'</i>	PJM Rhododendron	2-3" H	6-10' H	Lavender-pink Flowers in May-June
17	TOS	<i>Thuja occidentalis 'Smaragd'</i>	Emerald green Arborvitae	3-5" H	10-15' H	3-4' spread, Emerald green all year
4	VC	<i>Viburnum x carcephalum</i>	Fragrant Snowball Viburnum	2-3" H	4-6'H	Fragrance white flowers in May
<b>PERENNIALS</b>						
20	HSD	<i>Hemerocallis 'Stella D'Oro'</i>	Daylily	1 gal.	18-24" H	Yellow flowers in July - September
28	PA	<i>Perovoskia atriplicifolia</i>	Russian Sage	1 gal.	18-24" H	Purple flowers in June - August
<b>CLIMBING PLANTS</b>						
6	WSC	<i>Wisteria sinensis 'Caroline'</i>	Caroline Chinese Wisteria	1 gal.	vine	Compact cluster fragrant soft lavender flower in late May
<b>Ornamental Grasses</b>						
14	CAK	<i>Calamagrostis x acutiflora 'Karl Foerster'</i>	Karl Foerster Feather Reed Grass	2 gal.	5-6' H	Green, narrow spikes, early bloomer
17	CMI	<i>Carex morrowii 'Ice Dance'</i>	Ice Dance Japanese Sedge	1 gal.	12-18" H	Apple Green, with white margin
16	HS	<i>Helleitrichon sempervirens</i>	Blue Cat Grass	1 gal.	24" H	Blue Gray Green
46	MSM	<i>Miscanthus sinensis 'Morning Light'</i>	Miscanthus Morning Light Grass	2 gal.	4-5' H	Green & light silver
14	MSS	<i>Miscanthus sinensis 'Strictus'</i>	Pocuprine Grass	2 gal.	4-8' H	Green body with small yellow sections
6	MSV	<i>Miscanthus sinensis 'Variegated'</i>	Japanese Silver Grass	2 gal.	5-7' H	Light Apple Green with white stripes
38	PAH	<i>Pennisetum alopecuroides 'Himeh'</i>	Dwarf Fountain Grass	2 gal.	2-3' H	Green flower like foxtail

77 PARK - PAVING LIST:

ENTRY DRIVE SIDE WALK / PLAZA



TERRACE







Autum Shadbush



Pink Flowering Dogwood



Japanese Zelkova



American Arborvitae



Eastern Redbud



White Pine



Paperbark Maple



Bradford Pear



Leyland Cypress



Ginkgo



Katsura Tree



Upright Red Maple



Asian White Birch





Endless Summer Hydrangea



Mountain Laurel



Russian Sage



Dwarf Fountain Grass



Ice Dance Sedge



Wisteria



Densa Inkberry



PJM Rhododendron



Karl Foerster Reed Grass



Blue Oat Grass



Miscanthus Morning Light



Emerald Green Arborvitae



Steed Japanese Holly



Snowball Viburnum



Daylily

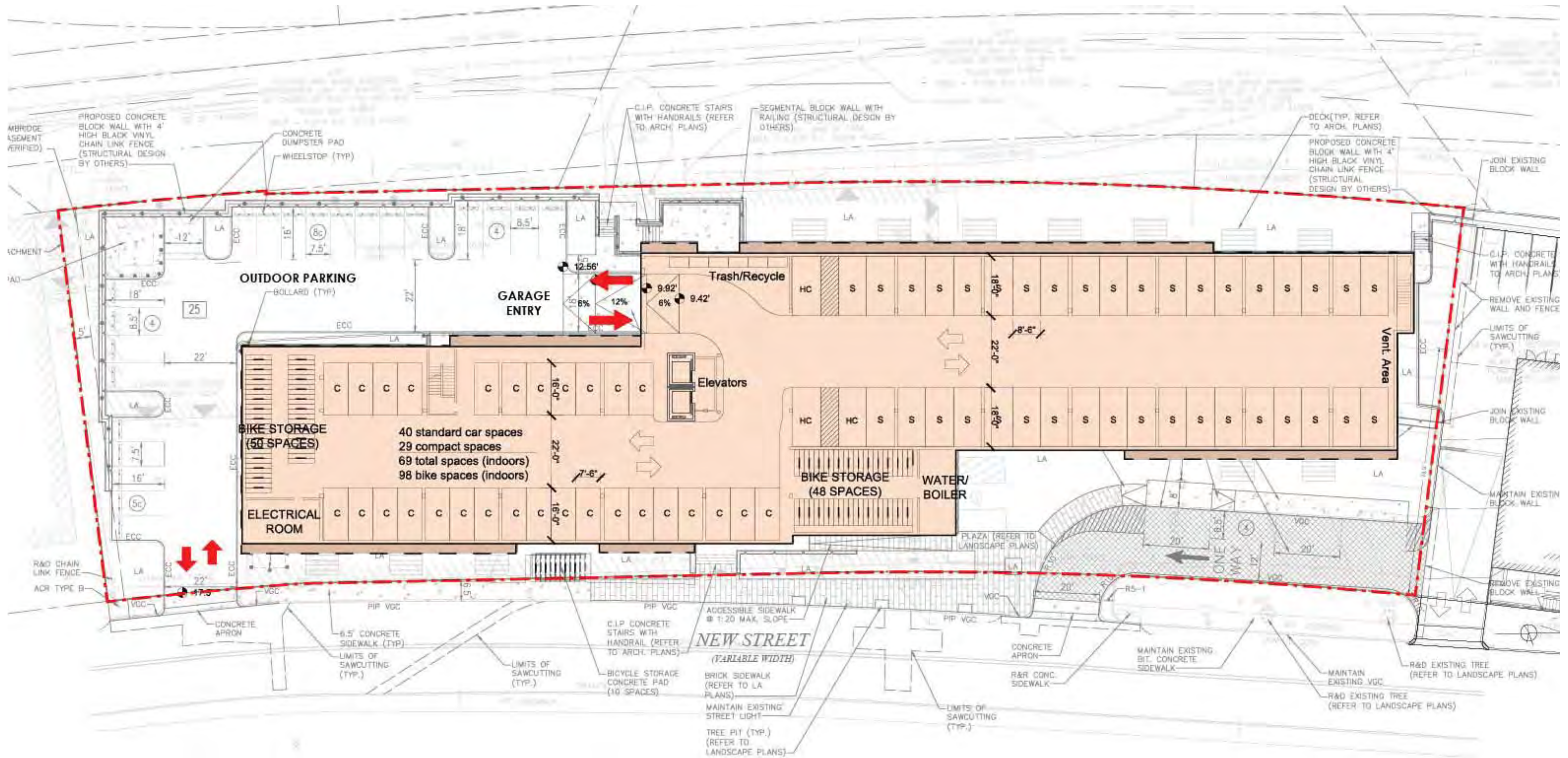


Japanese Silver Grass

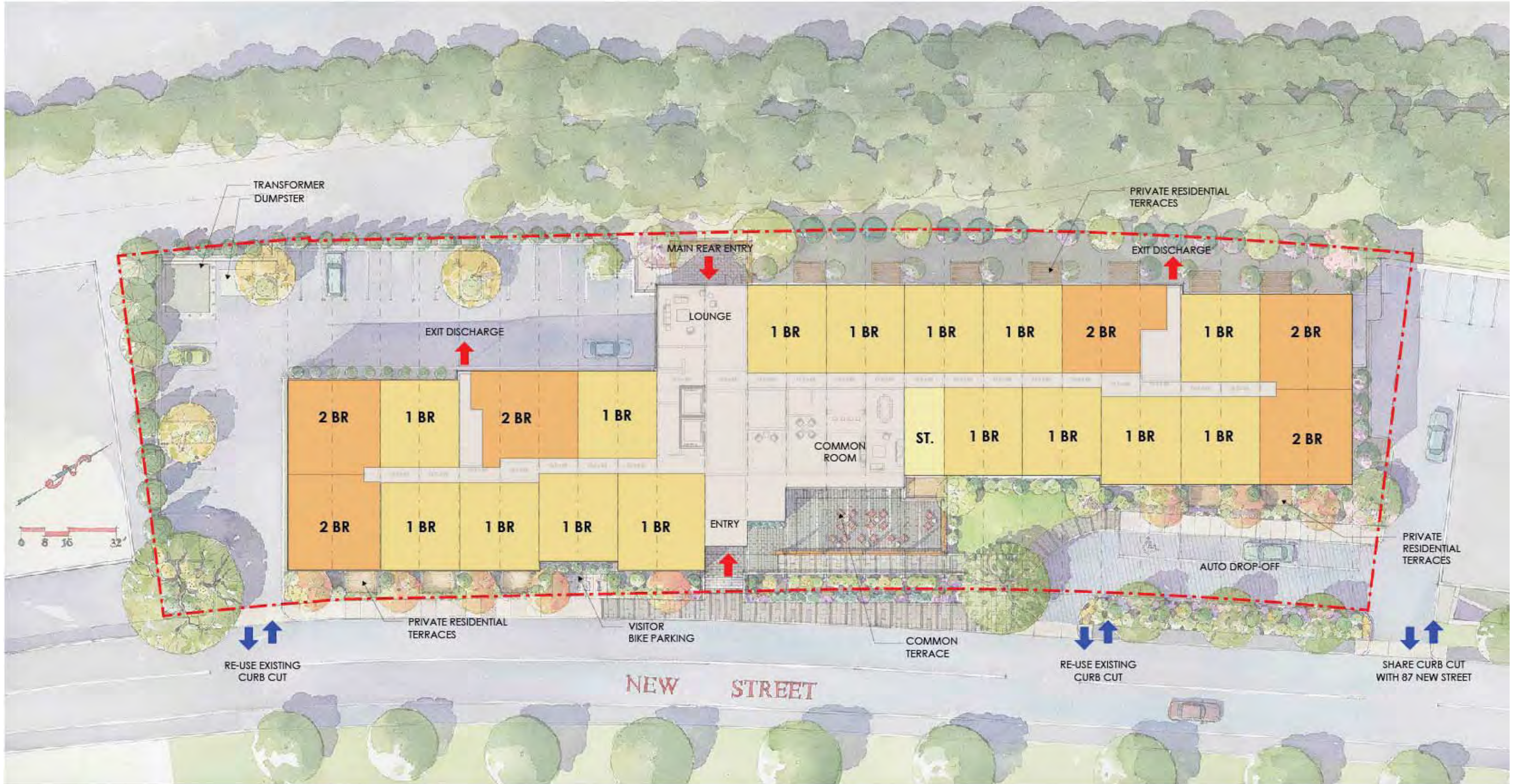


Pocupine Grass







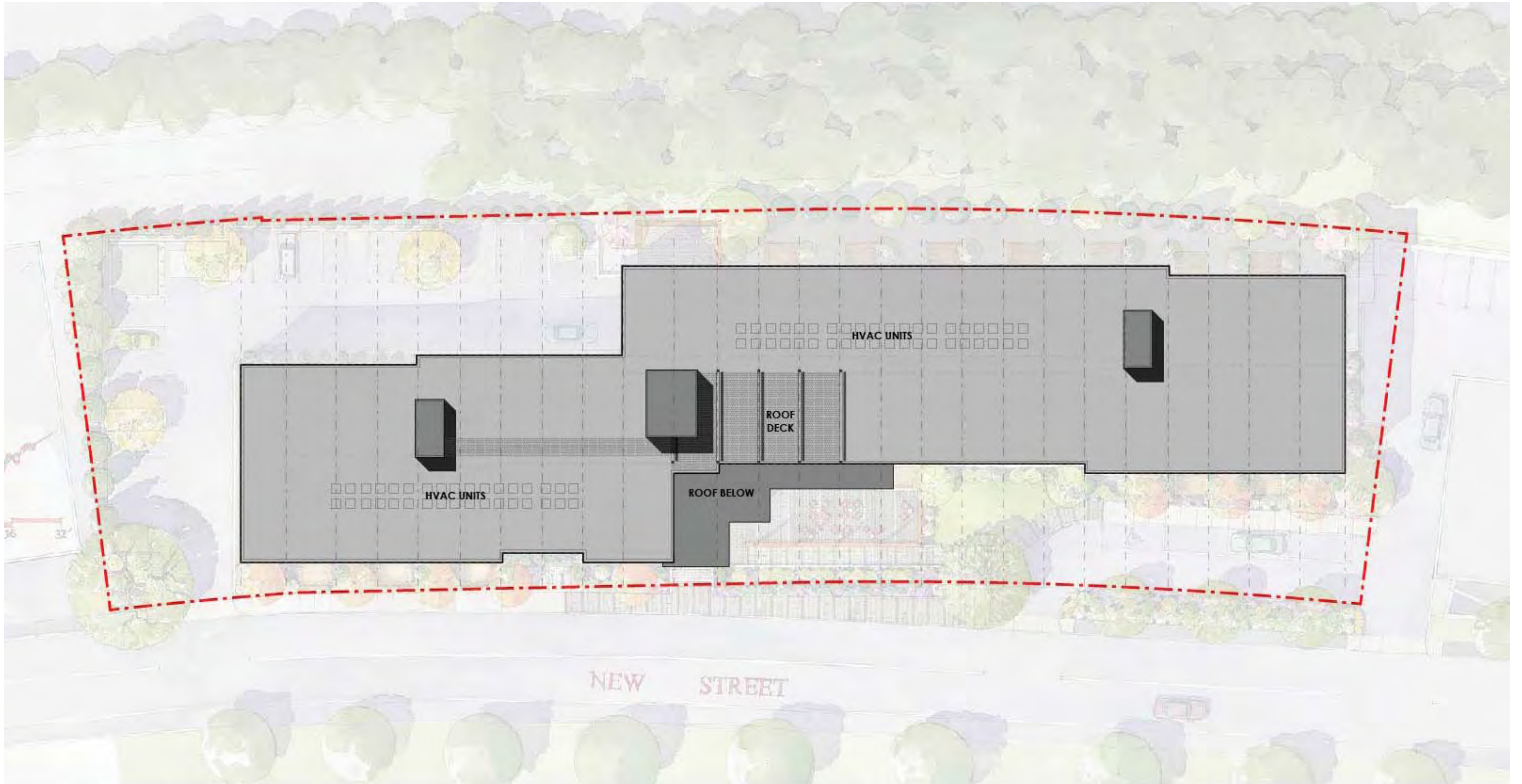






NEW STREET

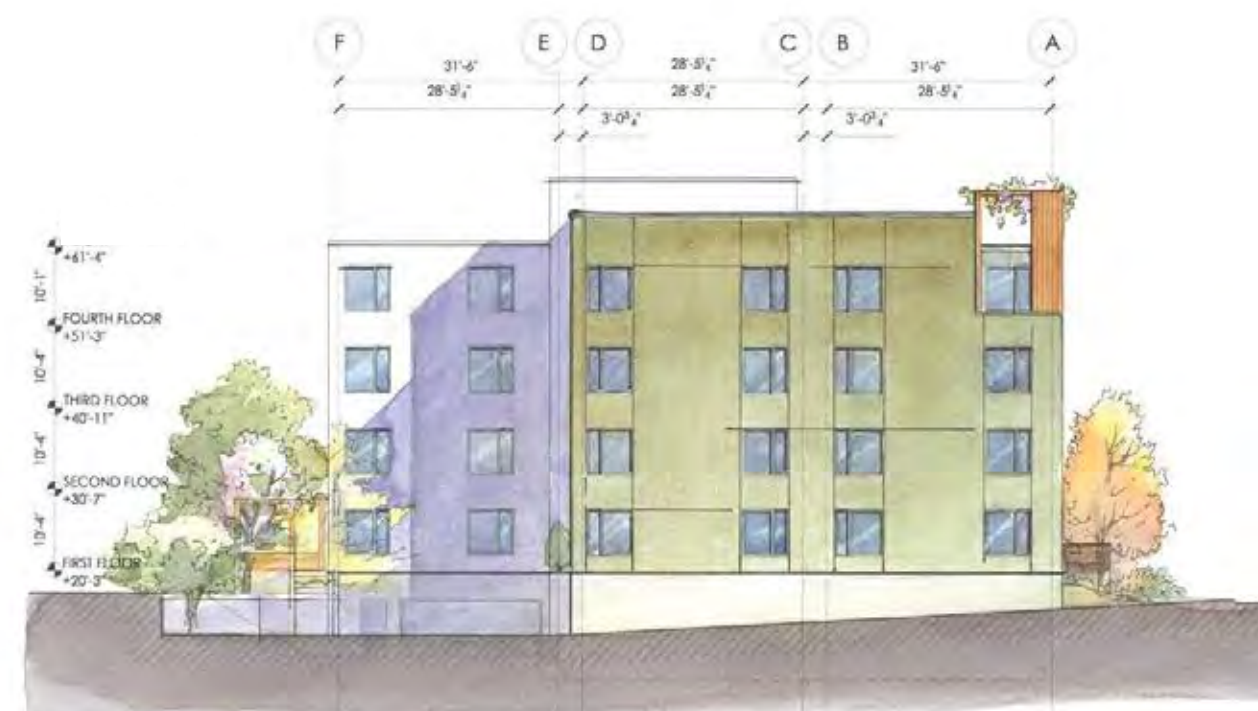
























MAIN ENTRY PERSPECTIVE AT NEW STREET



REAR ENTRY PERSPECTIVE



3/21

6/21

9/21

9am



12pm



3pm



6pm

