

**SYMBOL KEY**

- RETAIL COMMON AREAS
- RETAIL TENANT
- OFFICE COMMON AREAS
- OFFICE TENANT
- RESIDENTIAL COMMON AREAS
- RESIDENTIAL APARTMENT
- PARKING / LOADING
- MECHANICAL

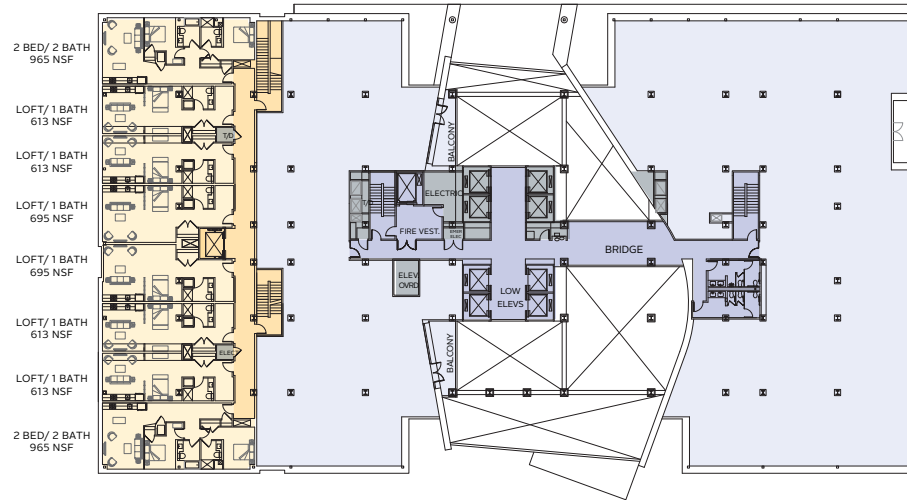
**PROPOSED FLOOR PLAN – FLOOR 1F**





SYMBOL KEY

- RETAIL COMMON AREAS
- RETAIL TENANT
- OFFICE COMMON AREAS
- OFFICE TENANT
- RESIDENTIAL COMMON AREAS
- RESIDENTIAL APARTMENT
- PARKING / LOADING
- MECHANICAL



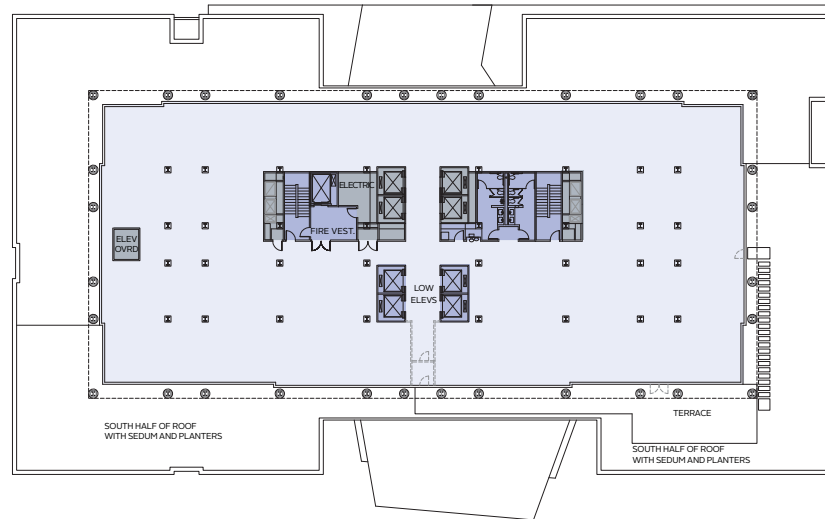
PROPOSED FLOOR PLAN – FLOOR 2F





SYMBOL KEY

- RETAIL COMMON AREAS
- RETAIL TENANT
- OFFICE COMMON AREAS
- OFFICE TENANT
- RESIDENTIAL COMMON AREAS
- RESIDENTIAL APARTMENT
- PARKING / LOADING
- MECHANICAL



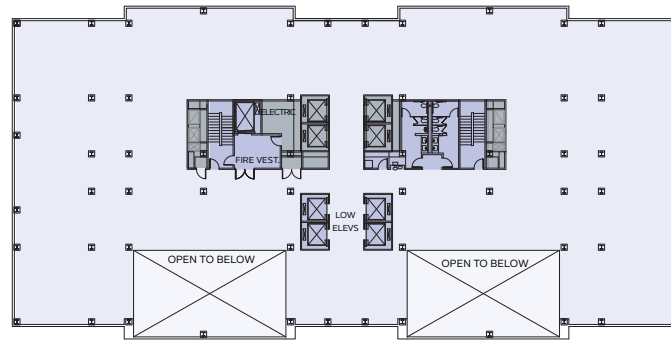
PROPOSED FLOOR PLAN – FLOOR 5 (FLOOR 6 SIMILAR)F



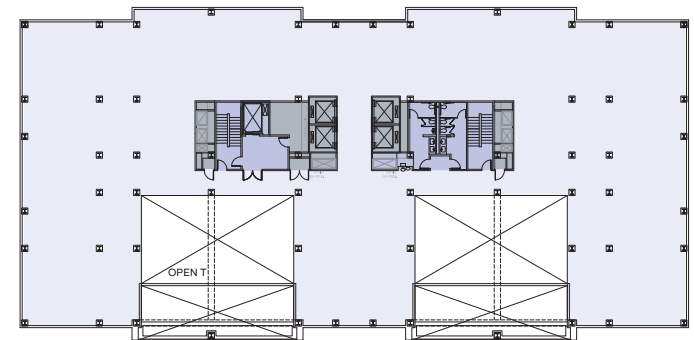


SYMBOL KEY

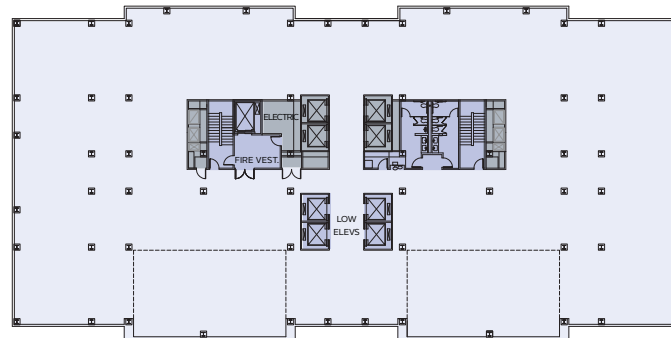
- RETAIL COMMON AREAS
- RETAIL TENANT
- OFFICE COMMON AREAS
- OFFICE TENANT
- RESIDENTIAL COMMON AREAS
- RESIDENTIAL APARTMENT
- PARKING / LOADING
- MECHANICAL



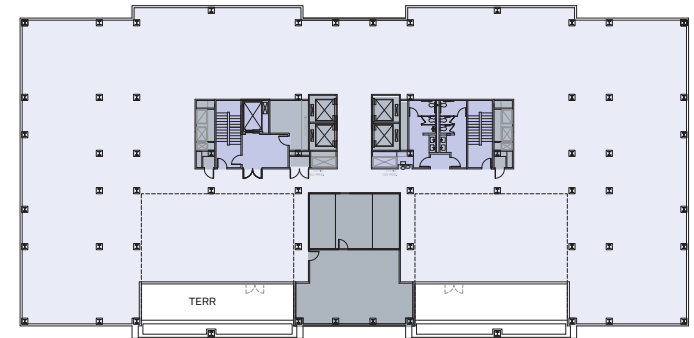
FLOORS 9,11,13



FLOOR 15



FLOORS 10,12



FLOOR 14

PROPOSED FLOOR PLANS - FLOORS 9 - 15 F

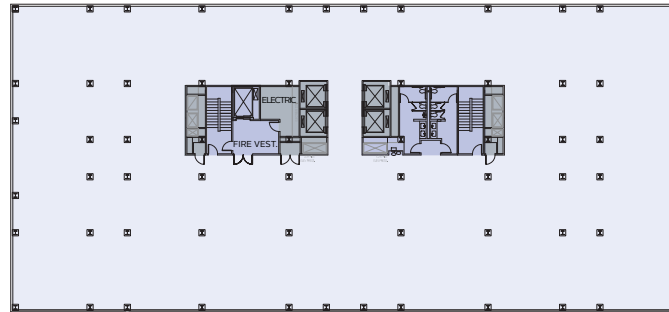






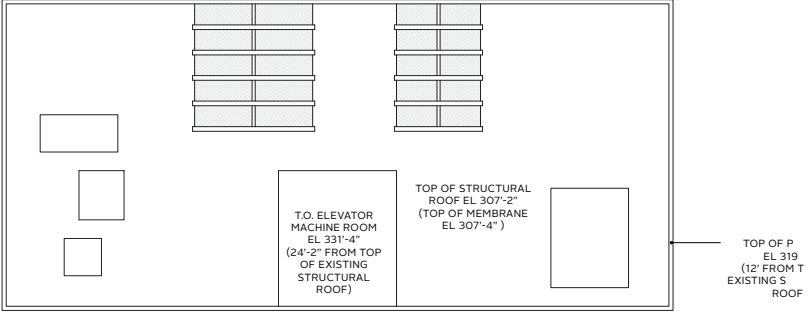
SYMBOL KEY

- RETAIL COMMON AREAS
- RETAIL TENANT
- OFFICE COMMON AREAS
- OFFICE TENANT
- RESIDENTIAL COMMON AREAS
- RESIDENTIAL APARTMENT
- PARKING / LOADING
- MECHANICAL

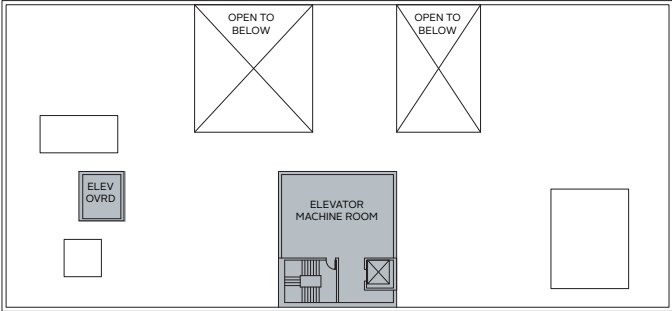


PROPOSED FLOOR PLAN - FLOORS 17 - 22F





**EXISTING ROOF PLAN**

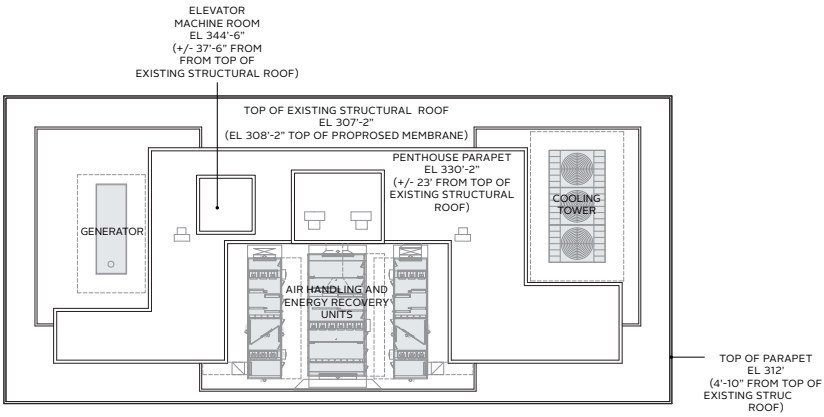


**EXISTING PENTHOUSE PLAN**

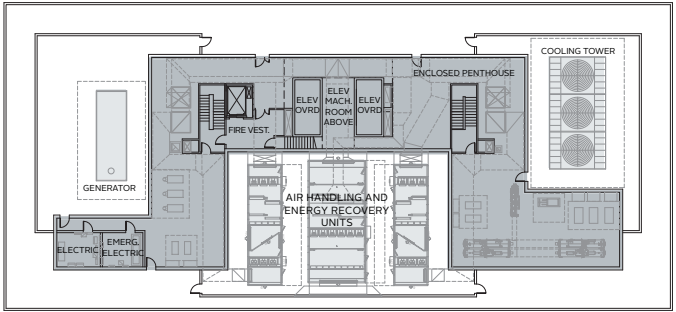
**TING FLOOR PLANS - FLOORS PH1 AND ROOF**



- SYMBOL KEY**
- RETAIL COMMON AREAS
  - RETAIL TENANT
  - OFFICE COMMON AREAS
  - OFFICE TENANT
  - RESIDENTIAL COMMON AREAS
  - RESIDENTIAL APARTMENT
  - PARKING / LOADING
  - MECHANICAL



**ROOF PLAN**

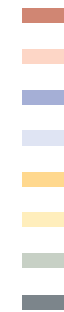
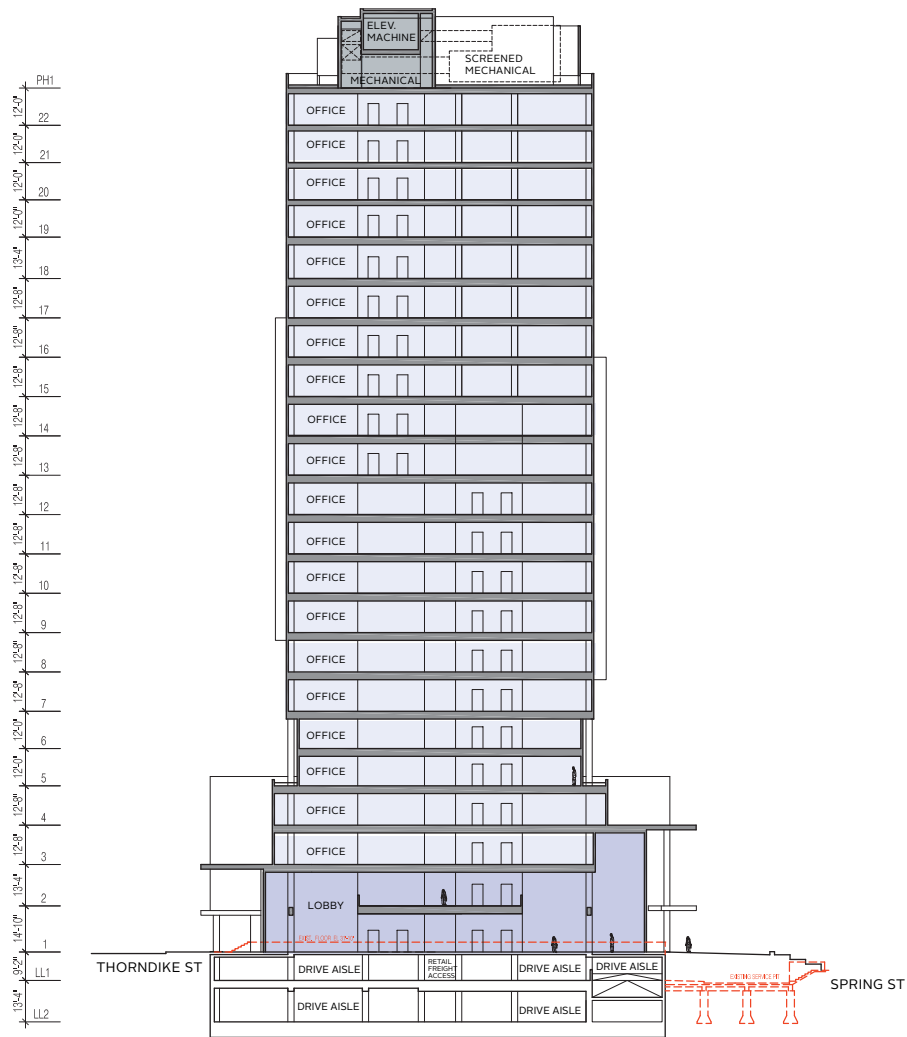


**PENTHOUSE PLAN (PH1)**

**PROPOSED FLOOR PLANS - FLOORS PH1 AND ROOF**





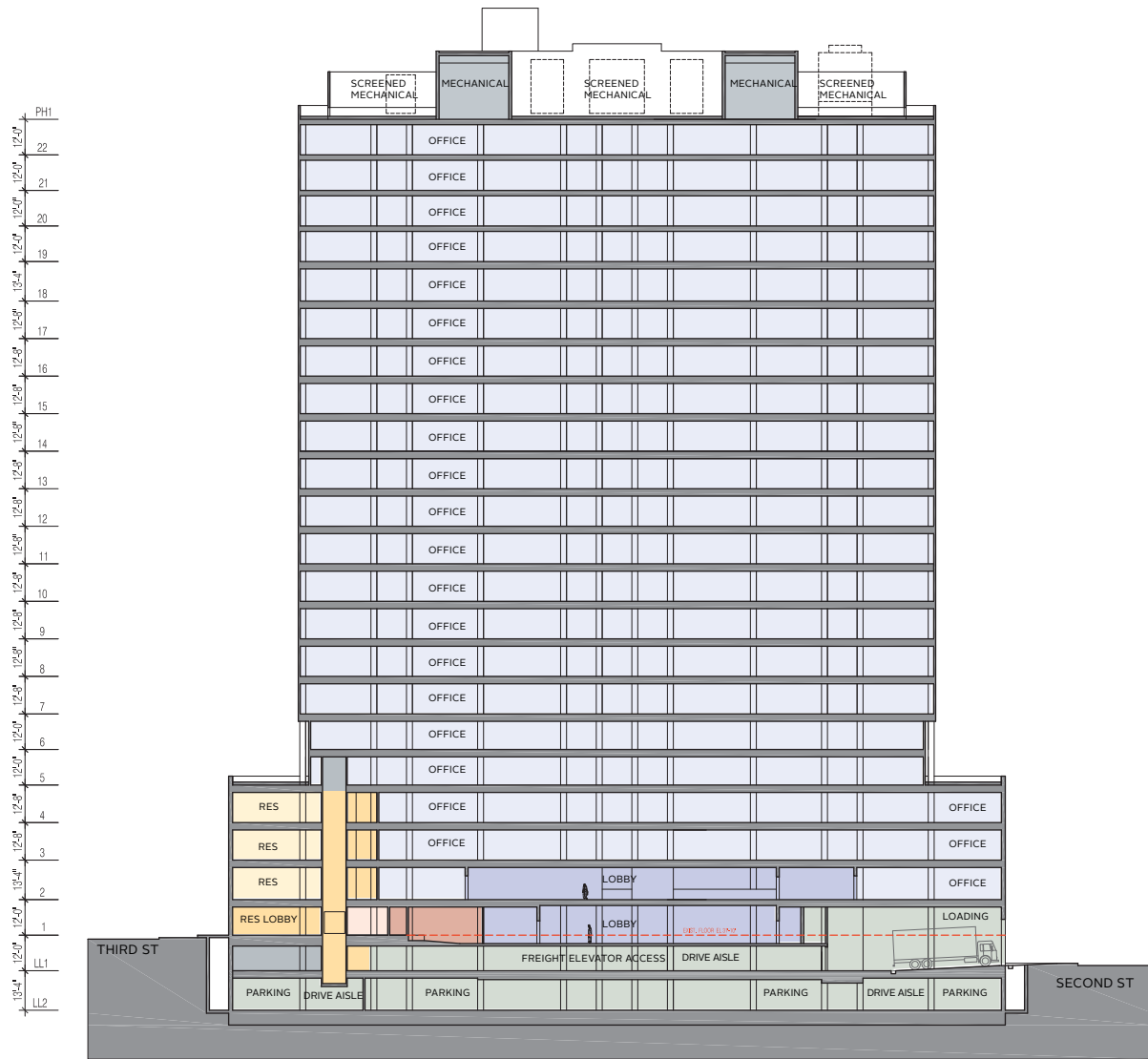


NORTH - SOUTH SECTION

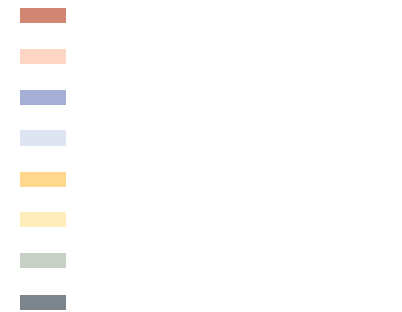
PROPOSED BUILDING SECTION F







WEST - EAST SECTION



PROPOSED BUILDING SECTION









THIRD ST

## PROPOSED BUILDING ELEVATION: SOUTH







SECOND ST

## PROPOSED BUILDING ELEVATION: NORTH







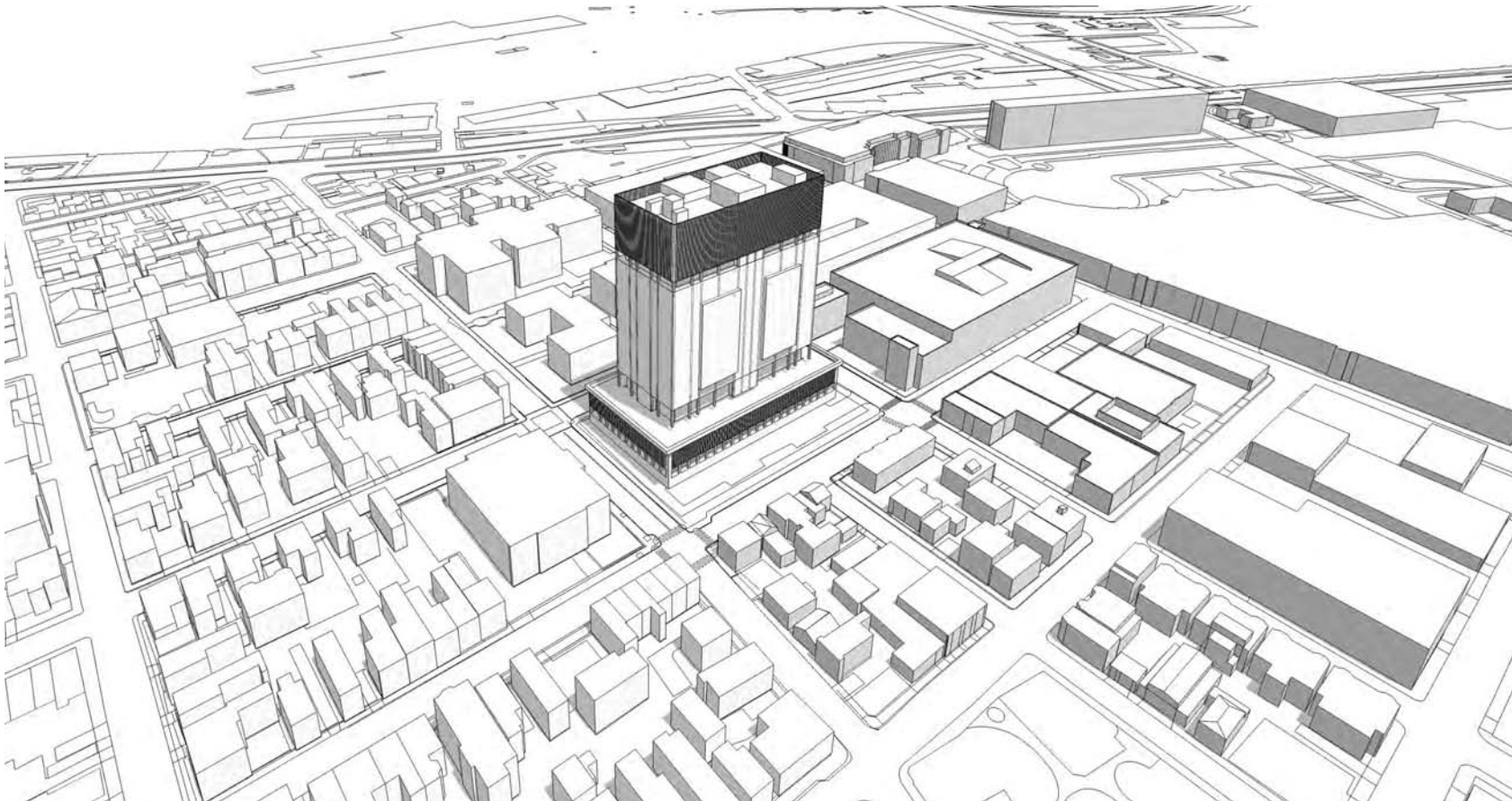
PROPOSED BUILDING ELEVATION: EAST





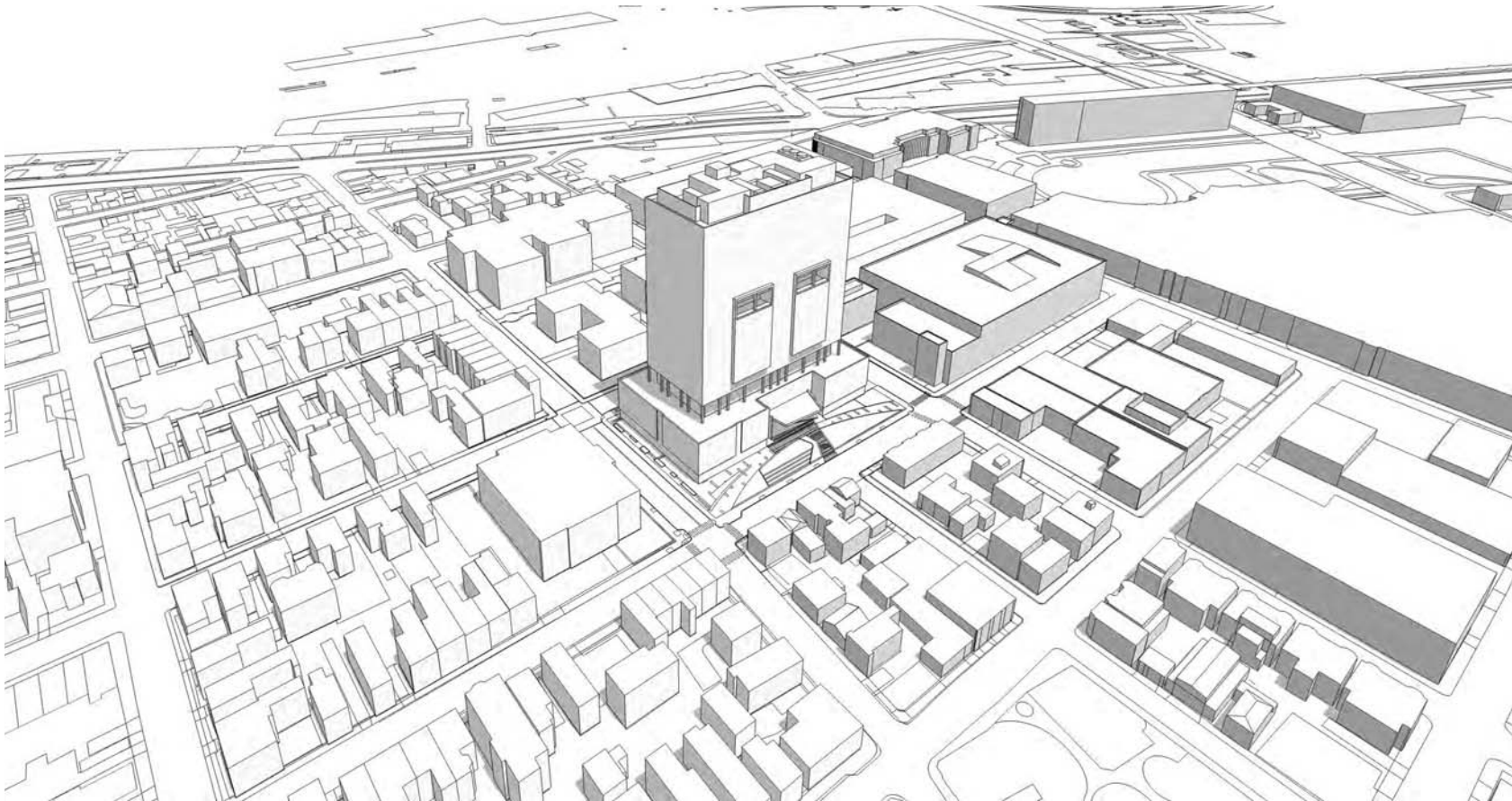
**PROPOSED BUILDING ELEVATION: WEST**





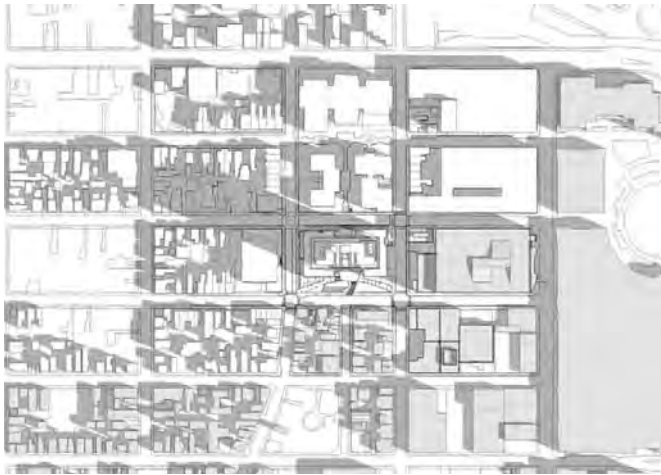
TING MASSINGF





## PROPOSED MASSING





9:00 AM DST



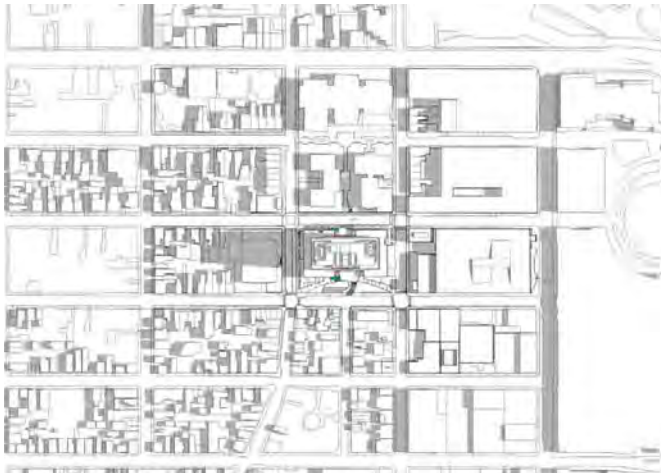
3:00 PM DST



- SHADOW LOST
- NEW SHADOW

## SHADOW STUDIES – PROPOSED CONDITIONS DURING MARCH (SPRING EQUINOX)





9:00 AM DST



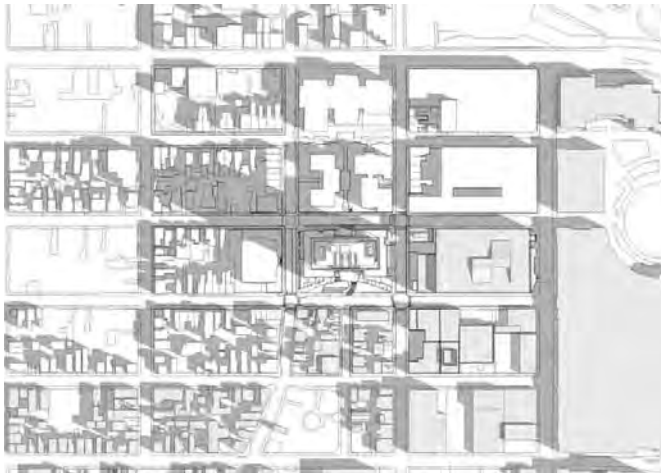
3:00 PM DST



- SHADOW LOST
- NEW SHADOW

## SHADOW STUDIES – PROPOSED CONDITIONS DURING JUNE (SUMMER SOLSTICE)F





9:00 AM DST



3:00 PM DST

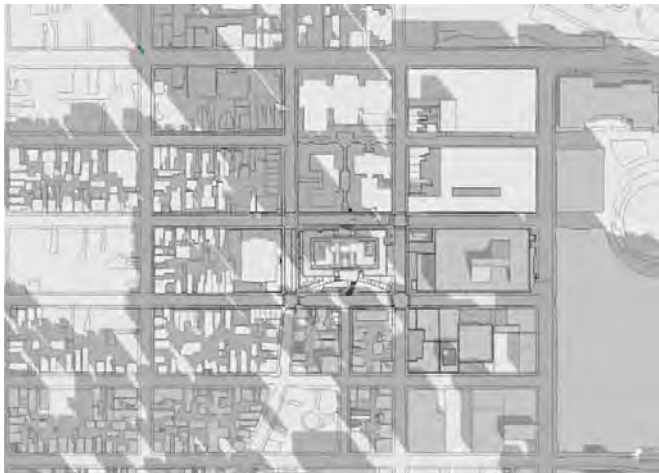


- SHADOW LOST
- NEW SHADOW

## SHADOW STUDIES – PROPOSED CONDITIONS DURING SEPTEMBER (FALL EQUINOX)F







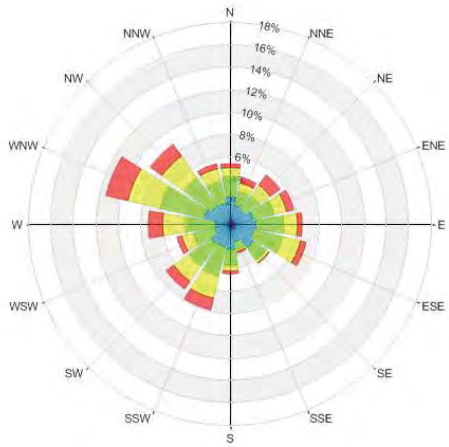
9:00 AM



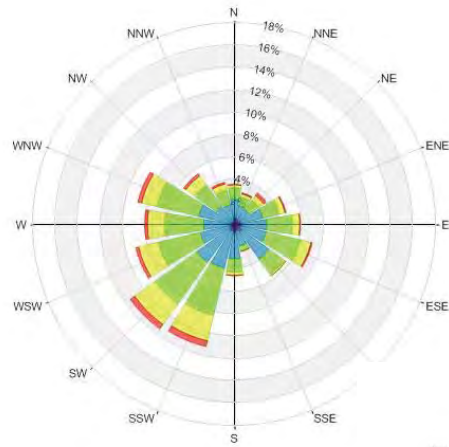
3:00 PM

- SHADOW LOST
- NEW SHADOW

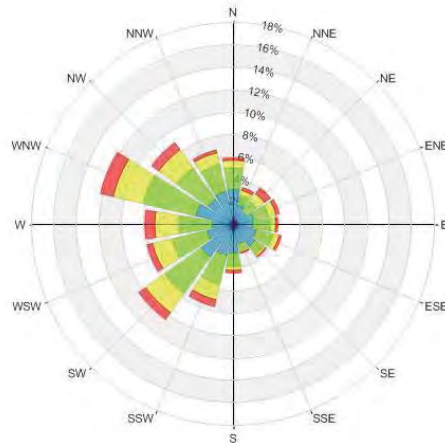
## SHADOW STUDIES – PROPOSED CONDITIONS DURING DECEMBER (WINTER SOLSTICE)F



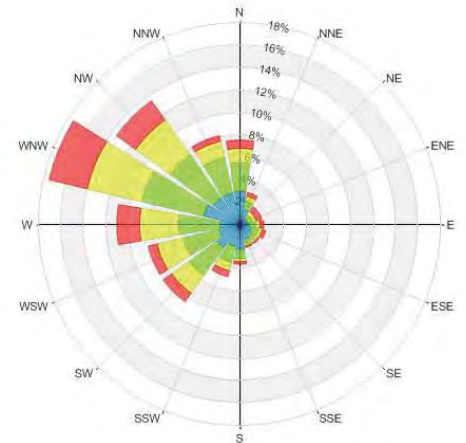
Spring  
(March - May)



Summer  
(June - August)



Fall  
(September - November)



Wind Speed (mph)	Probability (%)	
	Spring	Summer
Calm	1.4	1.5
1-5	5.7	8.0
6-10	26.8	36.1
11-15	33.5	36.4
16-20	21.4	15.0
>20	11.3	2.9

Wind Speed (mph)
Calm
1-5
6-10
11-15
16-20
>20

## WIND STUDIES – EXISTING CONDITION



**WIND STUDIES – PROPOSED MITIGATIONF**





## TING AND PROPOSED PERSPECTIVES – THIRD STREET & SPRING STREET



## TING AND PROPOSED PERSPECTIVES – THIRD STREET & THORNDIKE



## TING AND PROPOSED PERSPECTIVES – SECOND STREET & THORNDIKEF



## EXISTING AND PROPOSED PERSPECTIVES – SECOND STREET & SPRING STREET



TING PERSPECTIVE – THIRD STREET & SPRING STREET: OVERALL EXISTING BUILDING





**PROPOSED PERSPECTIVE – THIRD STREET & SPRING STREET: OVERALL PROPOSED BUILDING**