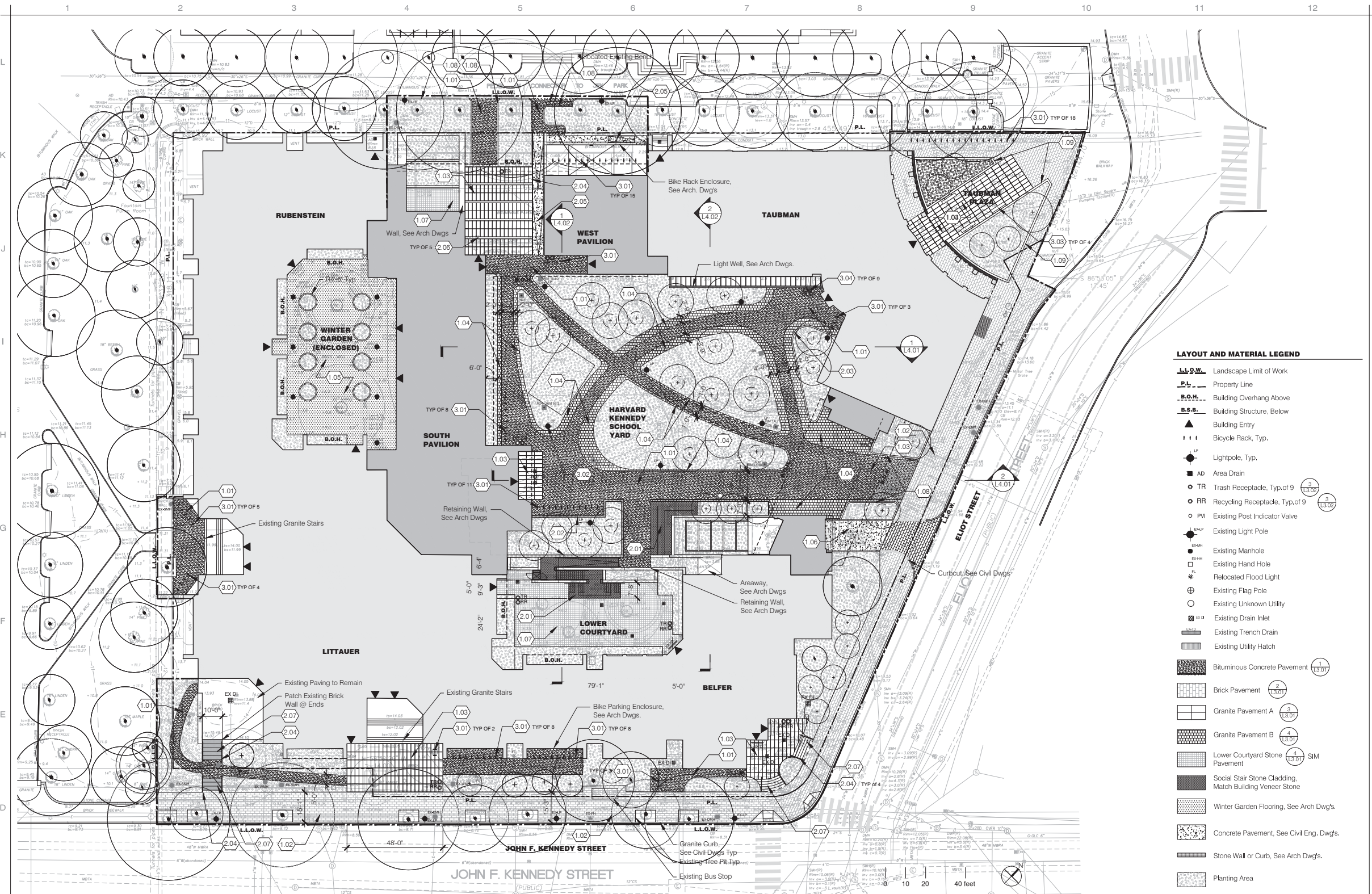


ATTACHMENT 9

LANDSCAPING PLANS



- LAYOUT & MATERIALS NOTES:**
- Use dimensional information given. Do not scale Drawings.
 - Layout all site elements, horizontally and vertically, including structures, foundations, pavements, walls, steps, plantings, curbs and lights by instrumentation or similar appropriate means. Layout shall be performed by a surveyor registered in the Commonwealth of Massachusetts.
 - The Contractor shall verify dimensions shown on the Drawings and notify the Landscape Architect of any discrepancies prior to the start of construction. The Contractor shall obtain the approval of the final layout with the Landscape Architect prior to starting construction and approval of site elements as construction proceeds. The Landscape Architect may make adjustments to the layout as necessary to satisfy the design intent.
 - All lines and dimensions are parallel or perpendicular to the lines from which they are measured unless otherwise shown.

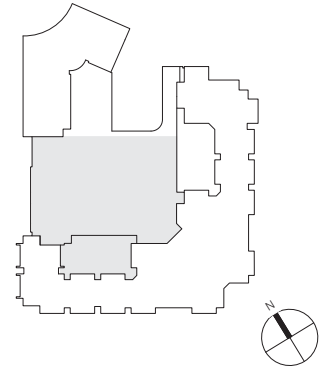
ITEMS NOT SHOWN:

Outdoor Fermob Tables Qty: 25
Outdoor Fermob Spraying Chairs Qty: 80
Outdoor Fermob Spraying Lounger Qty: 55
Yard Hydrants Qty: 4
Electrical Convenience Outlets Qty: 4
Re-Install Donor Benches Qty: 2

- LAYOUT & MATERIAL KEY**
- | | | |
|---|---|--------------------------------------|
| 1.00 PAVEMENT AND CURB DETAILS | 2.00 WALL AND STAIR DETAILS | 3.00 SITE FURNISHINGS DETAILS |
| 1.01 Bituminous Concrete Pavement | 2.01 Social Stair Stone Cladding, Match Building Veneer Stone | 3.01 Bike Rack |
| 1.02 Brick Pavement | 2.02 Planter Wall, See Arch Dwg's. | 3.02 Light Pole |
| 1.03 Granite Pavement A | 2.03 Stone Plant Bed Wall (12' H x 12' W) | 3.03 5' Wood Bench |
| 1.04 Granite Pavement B | 2.04 Stainless Steel Metal Handrail | 3.04 Trash and Recycling Receptacles |
| 1.05 Winter Garden Flooring, See Arch. Dwg's. | 2.05 Concrete ADA Ramp, See Arch Dwg's. | |
| 1.06 Concrete Pavement, See Civil Eng. Dwg's. | 2.06 Granite Steps (2 Risers Each) | |
| 1.07 Lower Courtyard Stone Pavement | 2.07 Granite Stair | |
| 1.08 Granite Plant Bed Curb A (6' H x 8' W) | | |
| 1.09 Granite Plant Bed Curb B (9' H x 12' W) | | |

- LAYOUT AND MATERIAL LEGEND**
- L.L.O.W.** Landscape Limit of Work
 - P.L.** Property Line
 - B.O.H.** Building Overhang Above
 - B.S.B.** Building Structure, Below
 - ▲ Building Entry
 - ||| Bicycle Rack, Typ.
 - Lightpole, Typ.
 - AD Area Drain
 - TR Trash Receptacle, Typ. of 9
 - RR Recycling Receptacle, Typ. of 9
 - PVI Existing Post Indicator Valve
 - Existing Light Pole
 - Existing Manhole
 - Existing Hand Hole
 - * Relocated Flood Light
 - ⊕ Existing Flag Pole
 - Existing Unknown Utility
 - Existing Drain Inlet
 - Existing Trench Drain
 - Existing Utility Hatch
 - Bituminous Concrete Pavement
 - Brick Pavement
 - Granite Pavement A
 - Granite Pavement B
 - Lower Courtyard Stone Pavement
 - Social Stair Stone Cladding, Match Building Veneer Stone
 - Winter Garden Flooring, See Arch Dwg's.
 - Concrete Pavement, See Civil Eng. Dwg's.
 - Stone Wall or Curb, See Arch Dwg's.
 - Planting Area

KEY PLAN



01	100% DD SUBMISSION	10/17/2014
----	--------------------	------------

HARVARD KENNEDY SCHOOL OF GOVERNMENT
79 John F. Kennedy St. - Cambridge, MA 02138

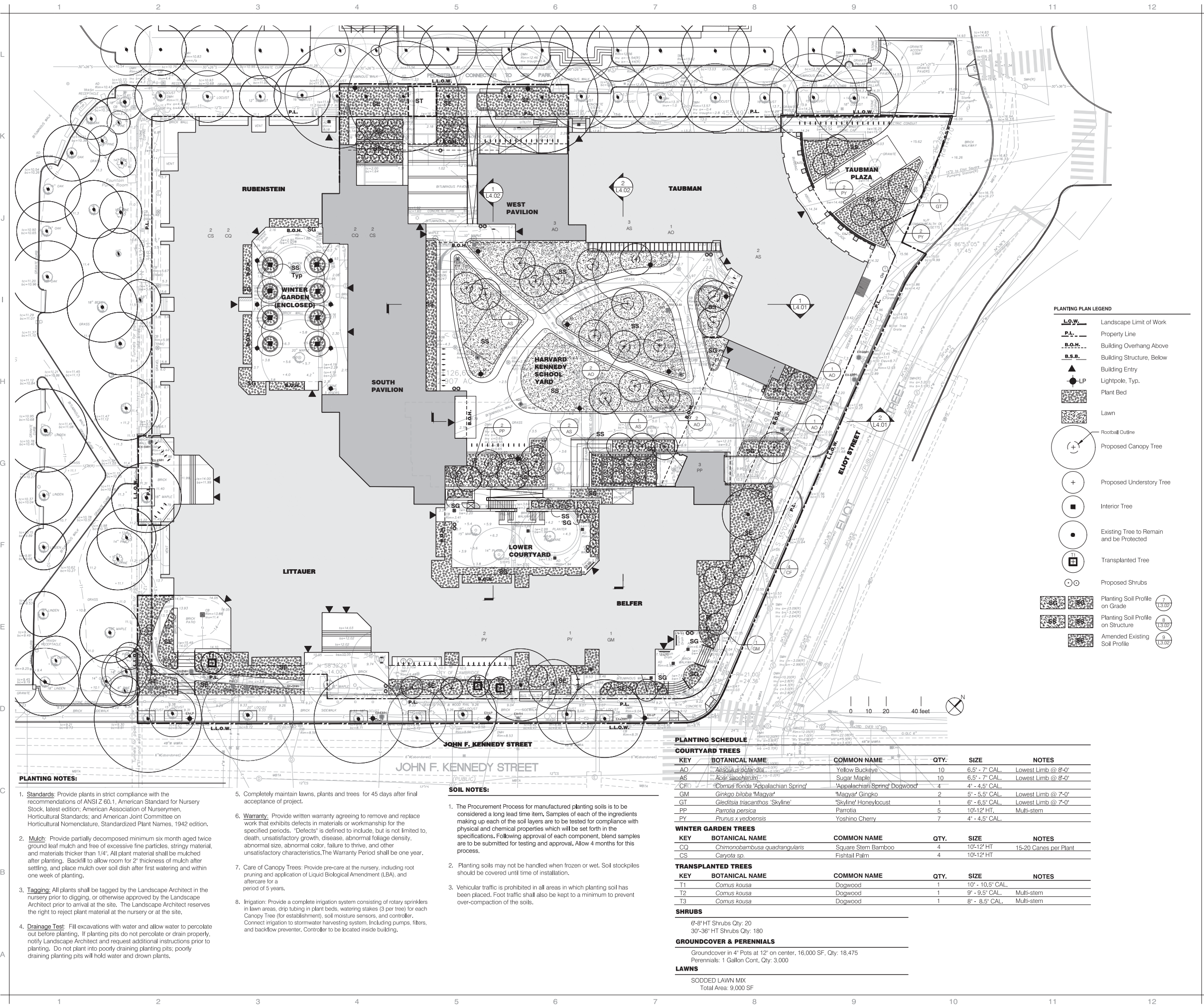
ROBERT A.M. STERN ARCHITECTS, LLP.

460 WEST 34th STREET, NEW YORK, NY 10001
TEL: (212) 967-5100 | FAX: (212) 967-5588

Michael Van Valkenburgh Associates, Inc.
231 Concord Ave.
Cambridge, Massachusetts 02138
Tel: 617.864.2076
Fax: 617.492.3128

Layout & Materials Plan

Project No.
CAD File No.
Drawing No.
L1.01



- PLANTING NOTES:**
- Standards:** Provide plants in strict compliance with the recommendations of ANSI Z 60.1, American Standard for Nursery Stock, latest edition; American Association of Nurseriesmen, Horticultural Standards; and American Joint Committee on Horticultural Nomenclature, Standardized Plant Names, 1942 edition.
 - Mulch:** Provide partially decomposed minimum six month aged twice ground leaf mulch and free of excessive fine particles, stringy material, and materials thicker than 1/4". All plant material shall be mulched after planting. Backfill to allow room for 2" thickness of mulch after settling, and place mulch over soil dish after first watering and within one week of planting.
 - Tagging:** All plants shall be tagged by the Landscape Architect in the nursery prior to digging, or otherwise approved by the Landscape Architect prior to arrival at the site. The Landscape Architect reserves the right to reject plant material at the nursery or at the site.
 - Drainage Test:** Fill excavations with water and allow water to percolate out before planting. If planting pits do not percolate or drain properly, notify Landscape Architect and request additional instructions prior to planting. Do not plant into poorly draining planting pits; poorly draining planting pits will hold water and drown plants.

- Completely maintain lawns, plants and trees for 45 days after final acceptance of project.
- Warranty:** Provide written warranty agreeing to remove and replace work that exhibits defects in materials or workmanship for the specified periods. "Defects" is defined to include, but is not limited to, death, unsatisfactory growth, disease, abnormal foliage density, abnormal size, abnormal color, failure to thrive, and other unsatisfactory characteristics. The Warranty Period shall be one year.
- Care of Canopy Trees: Provide pre-care at the nursery, including root pruning and application of Liquid Biological Amendment (LBA), and altercare for a period of 5 years.
- Irrigation: Provide a complete irrigation system consisting of rotary sprinklers in lawn areas, drip tubing in plant beds, watering stakes (3 per tree) for each Canopy Tree (for establishment), soil moisture sensors, and controller. Connect irrigation to stormwater harvesting system. Including pumps, filters, and backflow preventer. Controller to be located inside building.

- SOIL NOTES:**
- The Procurement Process for manufactured planting soils is to be considered a long lead time item. Samples of each of the ingredients making up each of the soil layers are to be tested for compliance with physical and chemical properties which will be set forth in the specifications. Following approval of each component, blend samples are to be submitted for testing and approval. Allow 4 months for this process.
 - Planting soils may not be handled when frozen or wet. Soil stockpiles should be covered until time of installation.
 - Vehicle traffic is prohibited in all areas in which planting soil has been placed. Foot traffic shall also be kept to a minimum to prevent over-compaction of the soils.

PLANTING SCHEDULE

COURTYARD TREES

KEY	BOTANICAL NAME	COMMON NAME	QTY.	SIZE	NOTES
AO	<i>Aesculus glabra</i>	Yellow Buckeye	10	6.5' - 7' CAL.	Lowest Limb @ 8'-0"
AS	<i>Acer saccharum</i>	Sugar Maple	10	6.5' - 7' CAL.	Lowest Limb @ 8'-0"
CR	<i>Cornus florida</i>	'Appalachian Spring'	4	4' - 4.5' CAL.	
GM	<i>Ginkgo biloba</i>	'Magyar' Ginkgo	2	5' - 5.5' CAL.	Lowest Limb @ 7'-0"
GT	<i>Gleditsia triacanthos</i>	'Skyline' Honeylocust	1	6' - 6.5' CAL.	Lowest Limb @ 7'-0"
PP	<i>Parrotia persica</i>	Parrotia	5	10'-12' HT.	Multi-stem
PY	<i>Prunus x yedoensis</i>	Yoshino Cherry	7	4' - 4.5' CAL.	

WINTER GARDEN TREES

KEY	BOTANICAL NAME	COMMON NAME	QTY.	SIZE	NOTES
CQ	<i>Chimonobambusa quadrangularis</i>	Square Stem Bamboo	4	10'-12' HT.	15-20 Canes per Plant
CS	<i>Caryota sp.</i>	Fishtail Palm	4	10'-12' HT.	

TRANSPLANTED TREES

KEY	BOTANICAL NAME	COMMON NAME	QTY.	SIZE	NOTES
T1	<i>Cornus kousa</i>	Dogwood	1	10' - 10.5' CAL.	
T2	<i>Cornus kousa</i>	Dogwood	1	9' - 9.5' CAL.	Multi-stem
T3	<i>Cornus kousa</i>	Dogwood	1	8' - 8.5' CAL.	Multi-stem

SHRUBS

6'-8" HT Shrubs Qty: 20
 30'-36" HT Shrubs Qty: 180

GROUNDCOVER & PERENNIALS

Groundcover in 4" Pots at 12" on center, 16,000 SF. Qty: 18,475
 Perennials: 1 Gallon Cont. Qty: 3,000

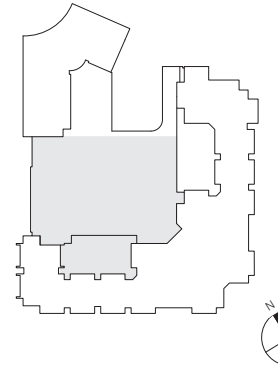
LAWNS

SOODED LAWN MIX
 Total Area: 9,000 SF

LEGEND / NOTES

- PLANTING PLAN LEGEND**
- L.O.W.** Landscape Limit of Work
 - P.L.** Property Line
 - B.O.H.** Building Overhang Above
 - B.S.B.** Building Structure, Below
 - ▲ Building Entry
 - Lightpole, Typ.
 - Plant Bed
 - Lawn
 - Rootball Outline
 - Proposed Canopy Tree
 - Proposed Understory Tree
 - Interior Tree
 - Existing Tree to Remain and be Protected
 - Transplanted Tree
 - Proposed Shrubs
 - Planting Soil Profile on Grade
 - Planting Soil Profile on Structure
 - Amended Existing Soil Profile

KEY PLAN



01	100% DD SUBMISSION	10/17/2014
----	--------------------	------------

HARVARD KENNEDY SCHOOL OF GOVERNMENT
 79 John F. Kennedy St. - Cambridge, MA 02138

ROBERT A.M. STERN ARCHITECTS, LLP.

460 WEST 34th STREET, NEW YORK, NY 10001
 TEL: (212) 967-5100 | FAX: (212) 967-5588

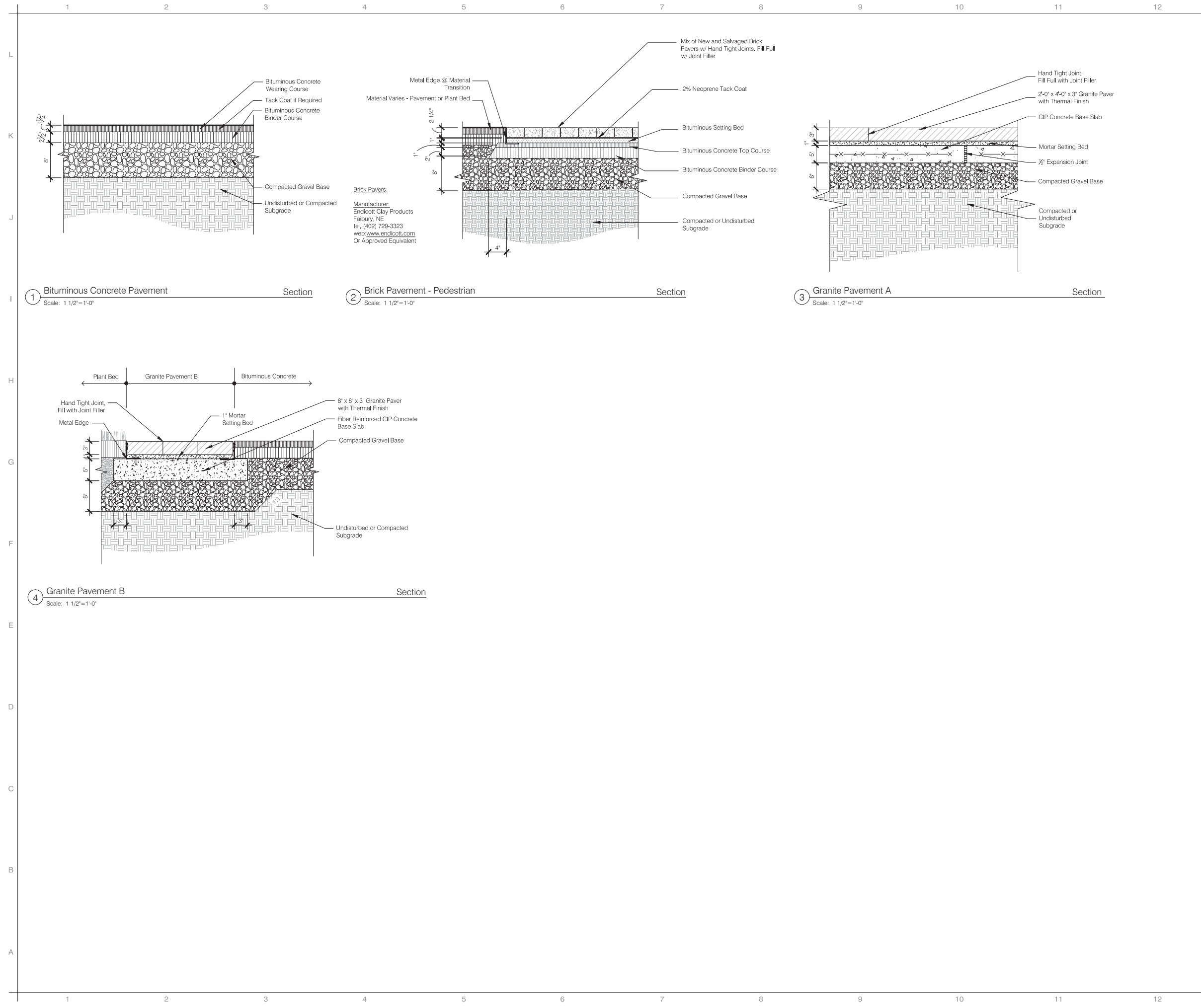
231 Concord Ave.
 Cambridge, Massachusetts 02138
 Tel: 617.864.2076
 Fax: 617.492.3128

Michael Van Valkenburgh Associates, Inc.

Planting Plan

Project No.
 CAD File No.
 Drawing No.

L3.01



LEGEND / NOTES

KEY PLAN

01	100% DD SUBMISSION	10/17/2014
----	--------------------	------------

HARVARD KENNEDY SCHOOL OF GOVERNMENT
79 John F. Kennedy St. - Cambridge, MA 02138

ROBERT A.M. STERN ARCHITECTS, LLP.
460 WEST 34th STREET, NEW YORK, NY 10001
TEL (212) 967-5100 | FAX (212) 967-5588

Michael Van Valkenburgh Associates, Inc.
231 Concord Ave.
Cambridge, Massachusetts 02138
Tel: 617.864.2076
Fax: 617.492.3128

Site Details

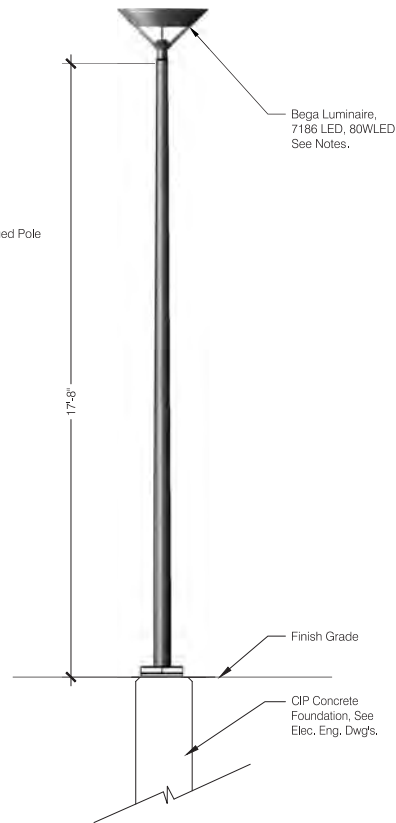
Project No.
CAD File No.
Drawing No.

L5.01

Manufacturer:
Bega / US
100 Bega Way
Carpinteria, CA 93-13
Tel: (805)684-0533
Website: www.bega-us.com

Pole Information:
1708HR 3'-5" Tapered Round Hinged Pole
Color: Black

Quantity: 8

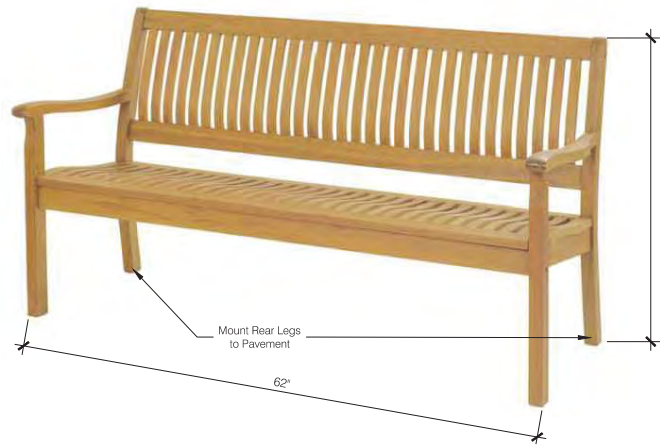


1 Light Pole
Scale: 3/4"=1'-0" Section

Manufacturer:
Arboria / LWO Corp.
3841 N. Columbia Boulevard
Portland, OR
T: 503-286-5372
F: 503-286-4092
Web: www.arboria.com

Product Name:
Serenity 5' Bench

Dimensions:
34.25'H x 62'W x 28.5'D



2 Wood Bench
Scale: 1 1/2"=1'-0" Section

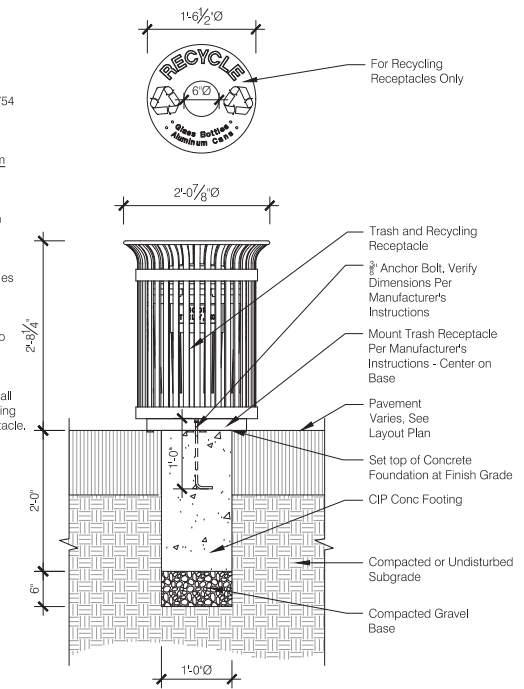
Manufacturer:
Victor Stanley, Inc.
P.O. Drawer 330
Dunkirk, Maryland 20754
Tel: (800) 368-2573
Fax: (410) 257-7579
Website:
www.victorstanley.com

Product Name:
Ironsites Series
Model S-35: 24 Gallon

Quantity:
11 Trash Receptacles
8 Recycling Receptacles

Location:
See Sheet L1.01
Landscape Architect to
Confirm in Field.

NOTE:
Signage on the Lid Shall
Distinguish the Recycling
from the Trash Receptacle.



3 Trash/Recycling Receptacle
Scale: 1"=1'-0" Section

Manufacturer:
Creative Pipe
P.O. Box 2458 | Rancho Mirage, California
92270-1087
Toll Free: 1.800.644.8467
<http://www.creativepipe.com/>

Model: SU-20

Finish: Powder Coat

Quantity: 86



4 Bike Rack
Scale: NTS Image

Manufacturer:
Fermob USA
62 Industrial Park Road
Dawsonville, GA 30354
P: 706-216-6600
<http://www.fermobUSA.com>



Product Name:
Suprising Model #1215
Stacking Chair
Quantity: 80



Product Name:
Suprising Model #1216
Low Armchair with Footstool
Quantity: 55

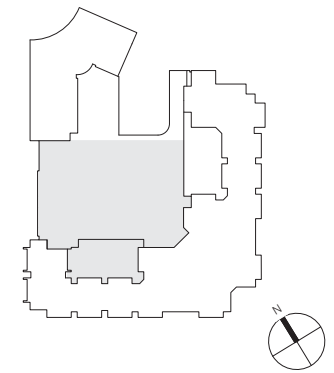


Product Name:
Luxembourg Model #4134
Knockdown Table
Quantity: 25

5 Cafe Tables and Chairs
Scale: NTS Image

LEGEND / NOTES

KEY PLAN



01	100% DD SUBMISSION	10/17/2014
----	--------------------	------------

**HARVARD KENNEDY
SCHOOL OF GOVERNMENT**
79 John F. Kennedy St. - Cambridge, MA 02138

ROBERT A.M. STERN ARCHITECTS, LLP.

460 WEST 34th STREET, NEW YORK, NY 10001
TEL: (212) 967-5100 | FAX: (212) 967-5588

Michael Van Valkenburgh Associates, Inc.

231 Concord Ave.
Cambridge, Massachusetts 02138
Tel: 617.864.2076
Fax: 617.492.3128

Site Details

Project No.

CAD File No.

Drawing No.

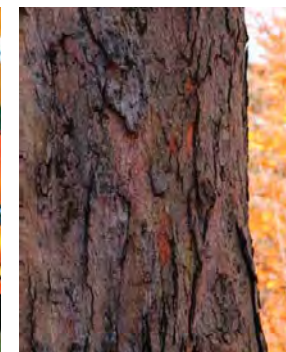
L5.02

SHADE TREES

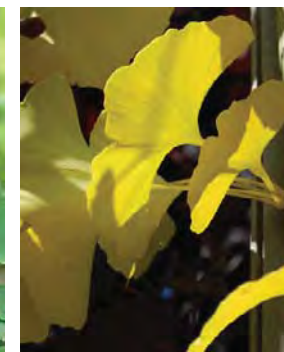
9-1



Aesculus octandra
Yellow Buckeye



Acer saccharum
Sugar Maple



'Magyar'
Magyar Ginkgo

UNDERSTORY TREES

9-2



Parrotia

Prunus x yedoensis
Yoshino Cherry

Cornus florida 'Appalachian Spring'
'Appalachian Spring' Dogwood