

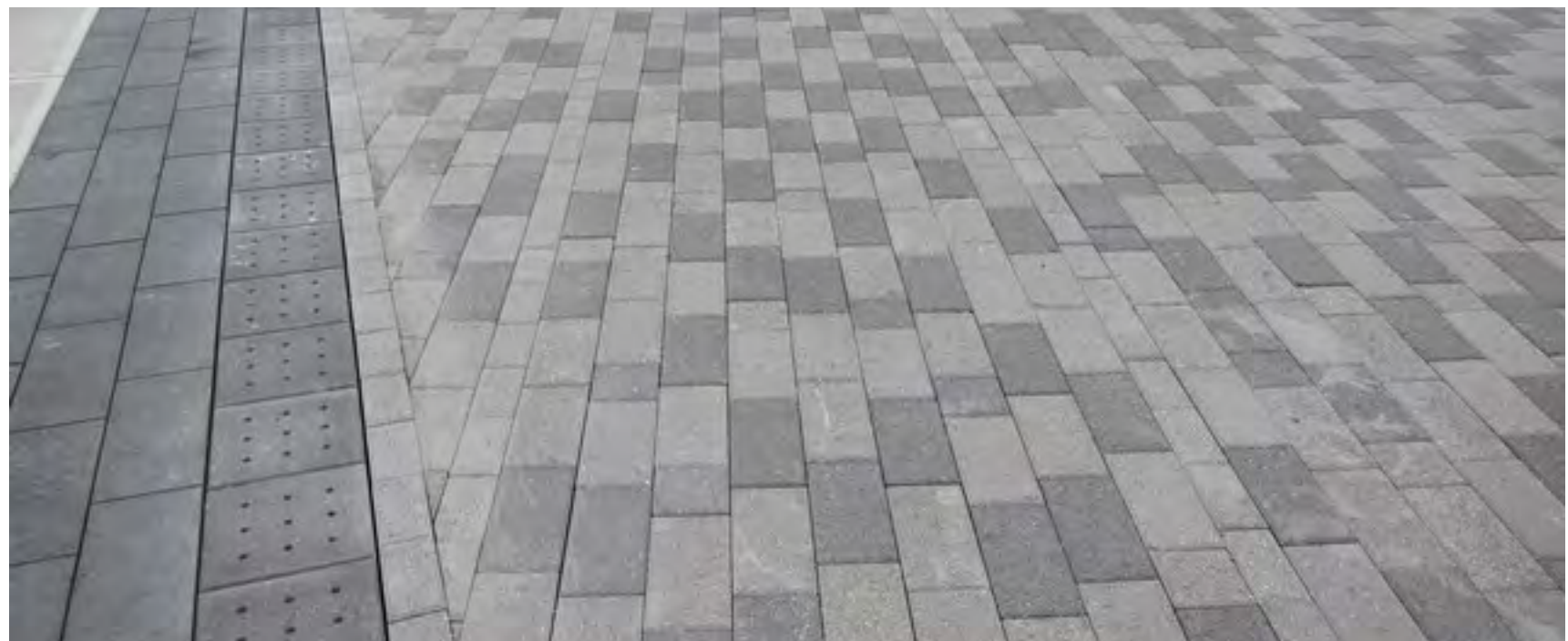
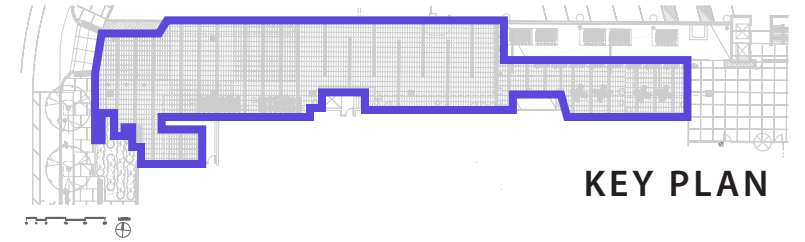
# AMES STREET | PIONEER WAY FINISHES: PAVING

Goal: Bring all paving to the same grade to support a multi-use "Shared Street" concept with few curbs.

Traffic calming measures include planters, coloured pavers, bike racks and curbless divisions between the different modes of traffic to create an open public space.



Above: A typical "Woonerf" in Europe. A Shared Street with no curb separation between cars, pedestrians, and bicyclists.



**Precedent Imagery for Pioneer Way:**  
A Mixture of Precast concrete pavers, colored concrete and tactile warning pavers to delineate "conflict zones" and provide visual and tactile cues.

SOURCE: CBA Landscape Architects

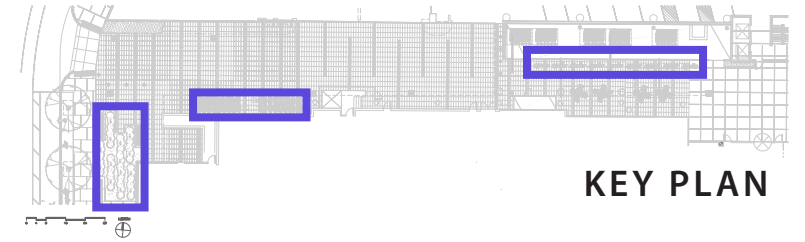
Vanasse Hangen Brustlin, Inc.

Figure 1.20a  
Site Finishes

Ames Street Residences  
Cambridge, MA

# AMES STREET | PIONEER WAY FINISHES: SITE FURNITURE

Goal: Provide modern seating options with comfortable surfaces in shady spaces. Site furniture should reflect the surrounding land uses of innovation technology and support the local culture of bicycling



**Precedent Imagery for Pioneer Way-Bike Racks, Benches:**  
Wooden benches in variable lengths, and brightly colored bike racks with a simple design provide modern touches which reflect the primary color of Google and the Red Line.

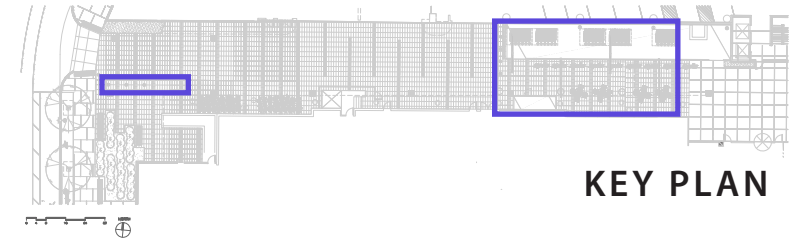
SOURCE: CBA Landscape Architects

Vanasse Hangen Brustlin, Inc.

Figure 1.20b  
Site Finishes

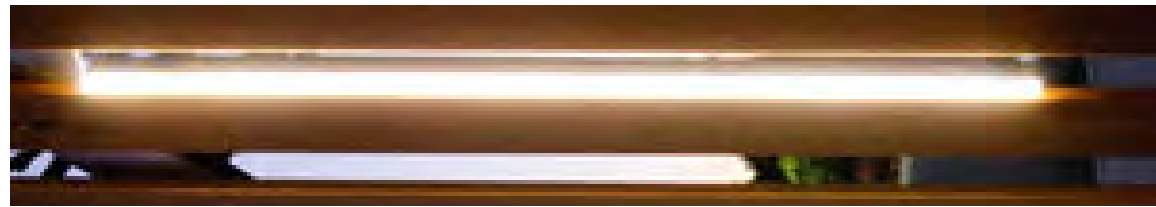
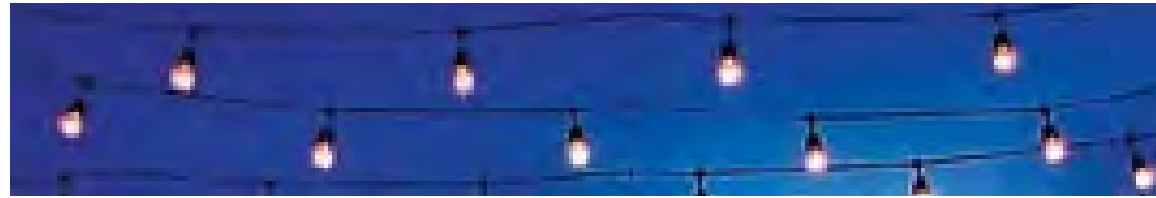
Ames Street Residences  
Cambridge, MA

# AMES STREET | PIONEER WAY FINISHES: SITE LIGHTING



KEY PLAN

Goal: Provide Site lighting which brightens the current alley way to create a inviting and safely lit space, while still reflecting the modern touches of the surrounding landscape.



**Precedent Imagery for Pioneer Way:**  
Lighting options for pioneer way include (clockwise from top) overhead plexineon (LED) or String lighting, lighted columns and lighted bollards to further identify use areas in this multiuse space.

SOURCE: CBA Landscape Architects

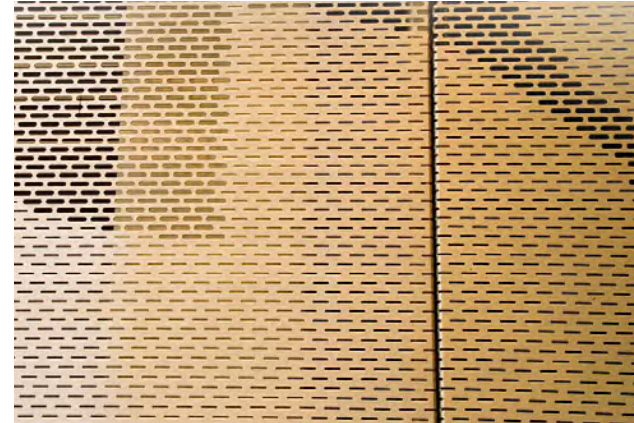
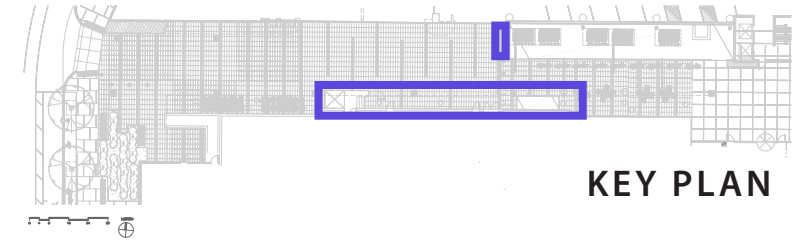
Vanasse Hangen Brustlin, Inc.

Figure 1.20c  
Site Finishes

Ames Street Residences  
Cambridge, MA

# AMES STREET | PIONEER WAY FINISHES: SITE SCREENING

Goal: Provide attractive screening to shield back of house areas and enliven this public space.



**Precedent Imagery for Pioneer Way:**  
Perforated aluminum and colorful printed nylon scrims cover over unsightly areas and create a unified look for the space.

SOURCE: CBA Landscape Architects

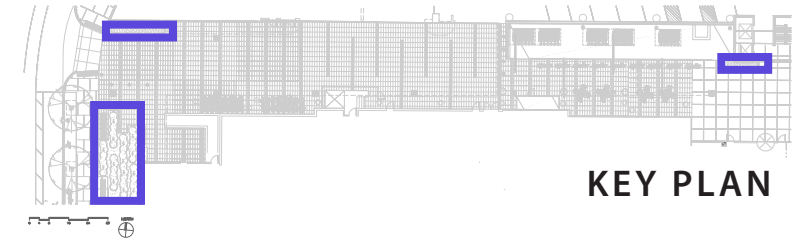
Vanasse Hangen Brustlin, Inc.

Figure 1.20d  
Site Finishes

Ames Street Residences  
Cambridge, MA

# AMES STREET | PIONEER WAY FINISHES: SITE PLANTING

**Goal:** Provide planted areas to soften the urban landscape and screen unsightly walls that are shade-tolerant and adaptable to urban conditions.



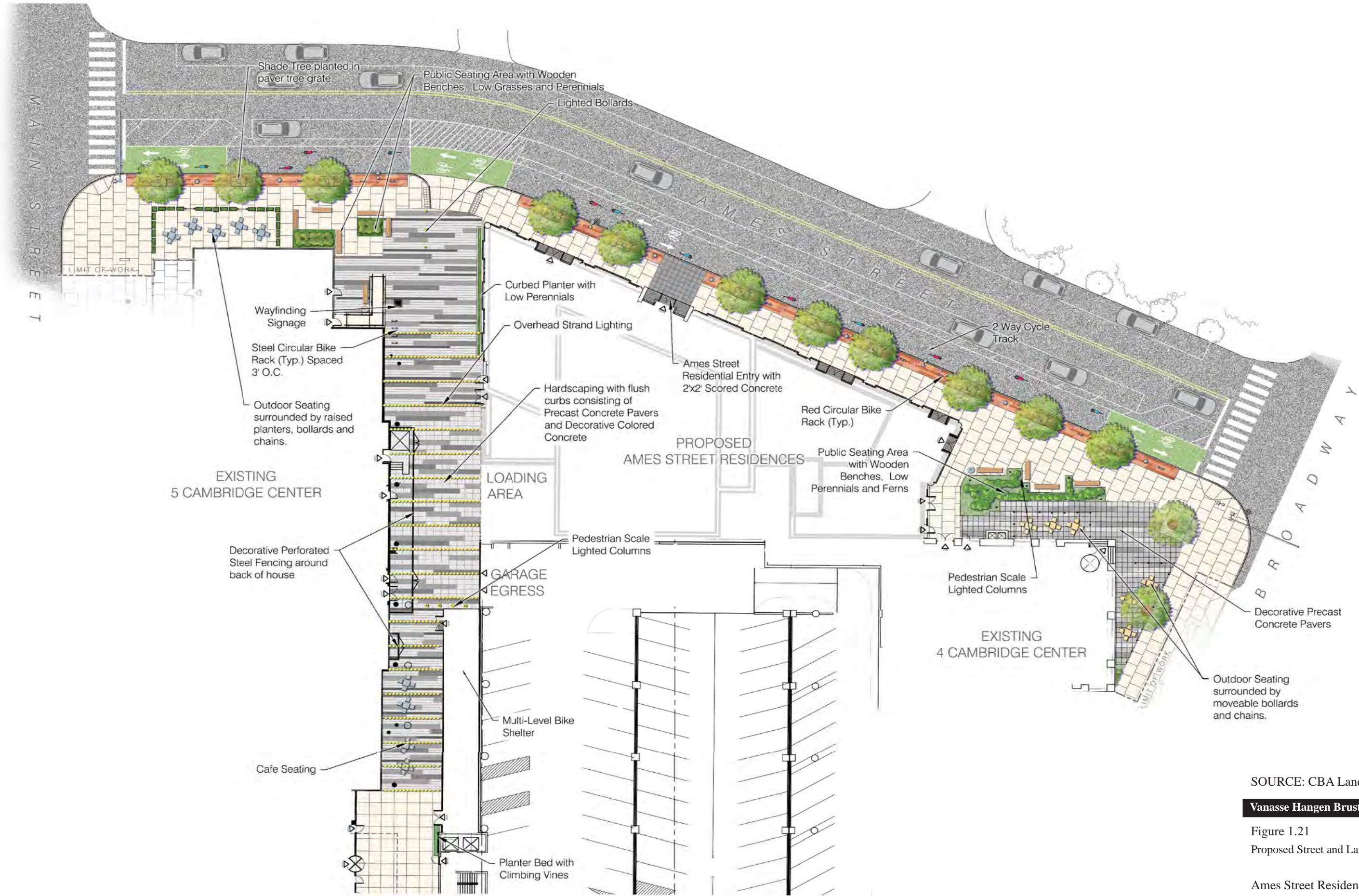
**Precedent Imagery for Pioneer Way:**  
Perforated aluminum and colorful printed nylon scrims cover over unsightly areas and create a unified look for the space.

SOURCE: CBA Landscape Architects

Vanasse Hangen Brustlin, Inc.

Figure 1.20e  
Site Finishes

Ames Street Residences  
Cambridge, MA



SOURCE: CBA Landscape Architects

Vanasse Hangen Brustlin, Inc.

Figure 1.21  
Proposed Street and Landscape Design

Ames Street Residences  
Cambridge, MA

# AMES STREET | PROPOSED STREET AND LANDSCAPE DESIGN