

Copyright 2013 Design Consultants, Inc.

**Design Consultants, Inc.**  
Consulting Engineers and Surveyors

120 MIDDLESEX AVENUE  
SOMERVILLE, MA 02145  
617-776-3350

68 PLEASANT STREET  
NEWBURYPORT, MA 01950  
978-358-7173

SCALE:				
HORIZ:	1" = 10'			
VERT:				
NO.	DATE	BY	REVISIONS	

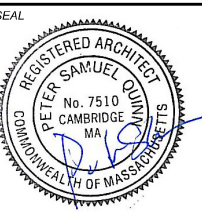
P:\2013 Projects\2013-104 57 JFK Street Cambridge\Drawings\SURVEYING\13-xxx 57 JFK-EX.dwg



P.L.S. *Everett J. Chandler*  
EVERETT J. CHANDLER, P.L.S. MASS. REGISTRATION NO. 41783

DATE: 11/14/13





CONSULTANT

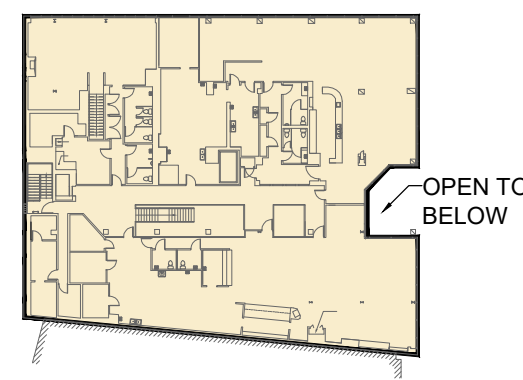
PROJECT  
**ADDITION TO 57 JFK ST**  
57 JFK STREET  
CAMBRIDGE, MA

PREPARED FOR  
**RAJ & RAJ LLC**  
1299 BEACON ST  
BROOKLINE, MA 02446

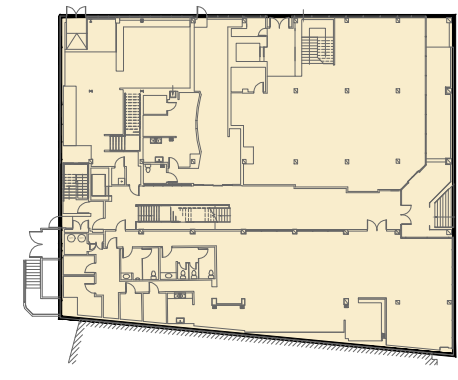
DRAWING TITLE  
**ZONING COMPLIANCE**  
NO CHANGE FROM PREVIOUSLY APPROVED SPECIAL PERMIT EXCEPT REMOVAL OF BASEMENT FAR  
SCALE AS NOTED

REVISION	DATE
SP APPLIC	28 FEB 2019
DRAWN BY MY	REVIEWED BY PQ

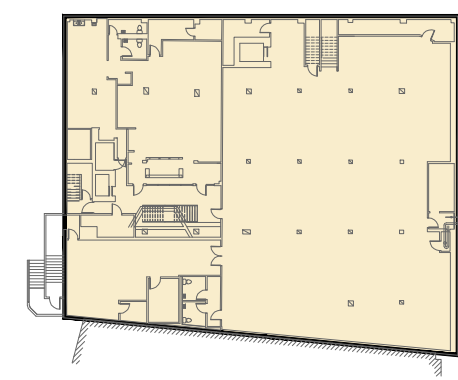
SHEET



2ND FLOOR: 11,989-SF



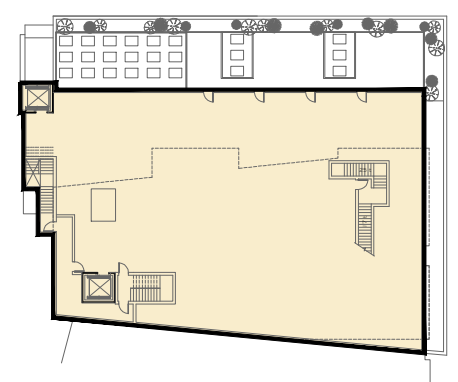
1ST FLOOR: 12,310-SF



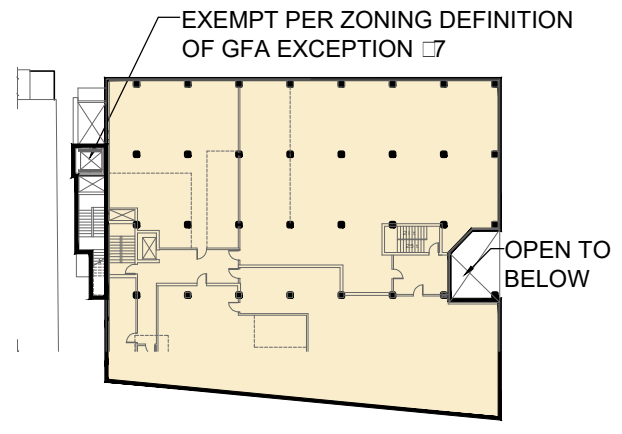
BASEMENT: 12,310-SF

⊗ ○ **EXISTING GFA** 36,609-GSF (63% OF MAX FAR)  
SCALE: 1"=60'-0"  GSF

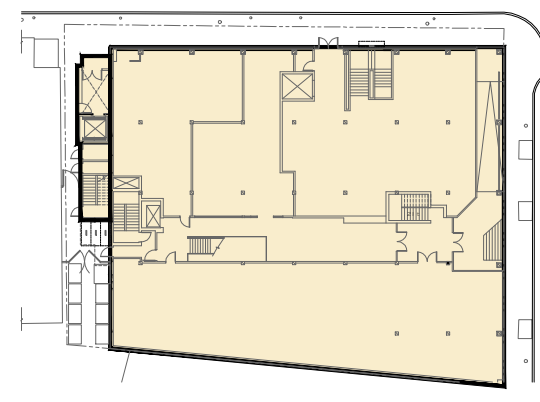
LOT AREA = 14,504-SF  
14,504-SF X 4.0 MAX FAR = 58,016-GSF  
SIZE OF EXISTING BUILDING = 36,609-GSF = 2.52 FAR (63% OF MAX FAR)



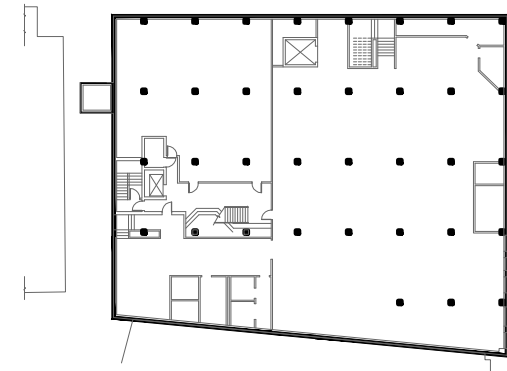
3RD FLOOR: 9,295-SF



2ND FLOOR: 11,989-SF



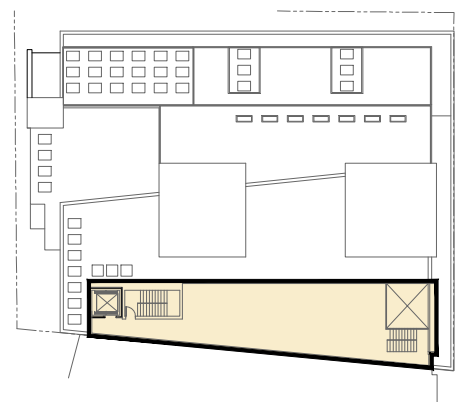
1ST FLOOR: 12,812-SF



BASEMENT: 0-SF VIA SPECIAL PERMIT

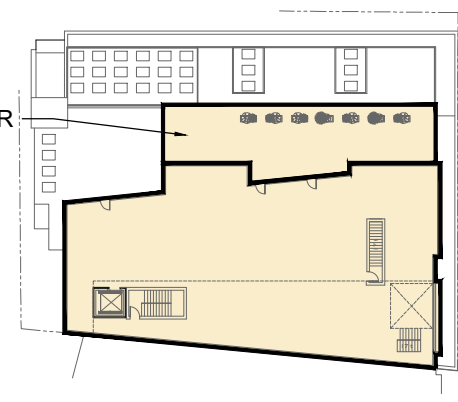
⊗ ○ **PROPOSED GFA** 44,595-GSF (77% OF MAX FAR) VIA SP TO EXEMPT BASEMENT GSF  
SCALE: 1"=60'-0"  GSF

LOT AREA = 14,504-SF  
14,504-SF X 4.0 MAX FAR = 58,016-GSF  
CALCULATED PROPOSED SIZE OF DEVELOPMENT = 44,595-GSF = 3.07 = (77% OF MAX FAR)  
REDUCTION IN FAR REQUESTED VIA SPECIAL PERMIT PER ZBL DEFINITION OF GROSS FLOOR AREA SHALL NOT INCLUDE, EXAMPLE NO. 16



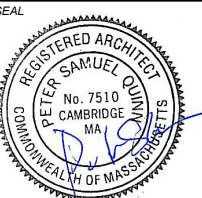
MEZZANINE: 2,409-SF

4TH FLOOR DECK



4TH FLOOR: 8,090-SF





CONSULTANT

PROJECT  
**ADDITION TO  
57 JFK ST**  
57 JFK STREET  
CAMBRIDGE, MA

PREPARED FOR  
**RAJ & RAJ LLC**

1299 BEACON ST  
BROOKLINE, MA 02446

DRAWING TITLE  
**FIRST FLOOR  
PLAN**

NO CHANGE FROM  
PREVIOUSLY  
APPROVED  
SPECIAL PERMIT  
SCALE AS NOTED

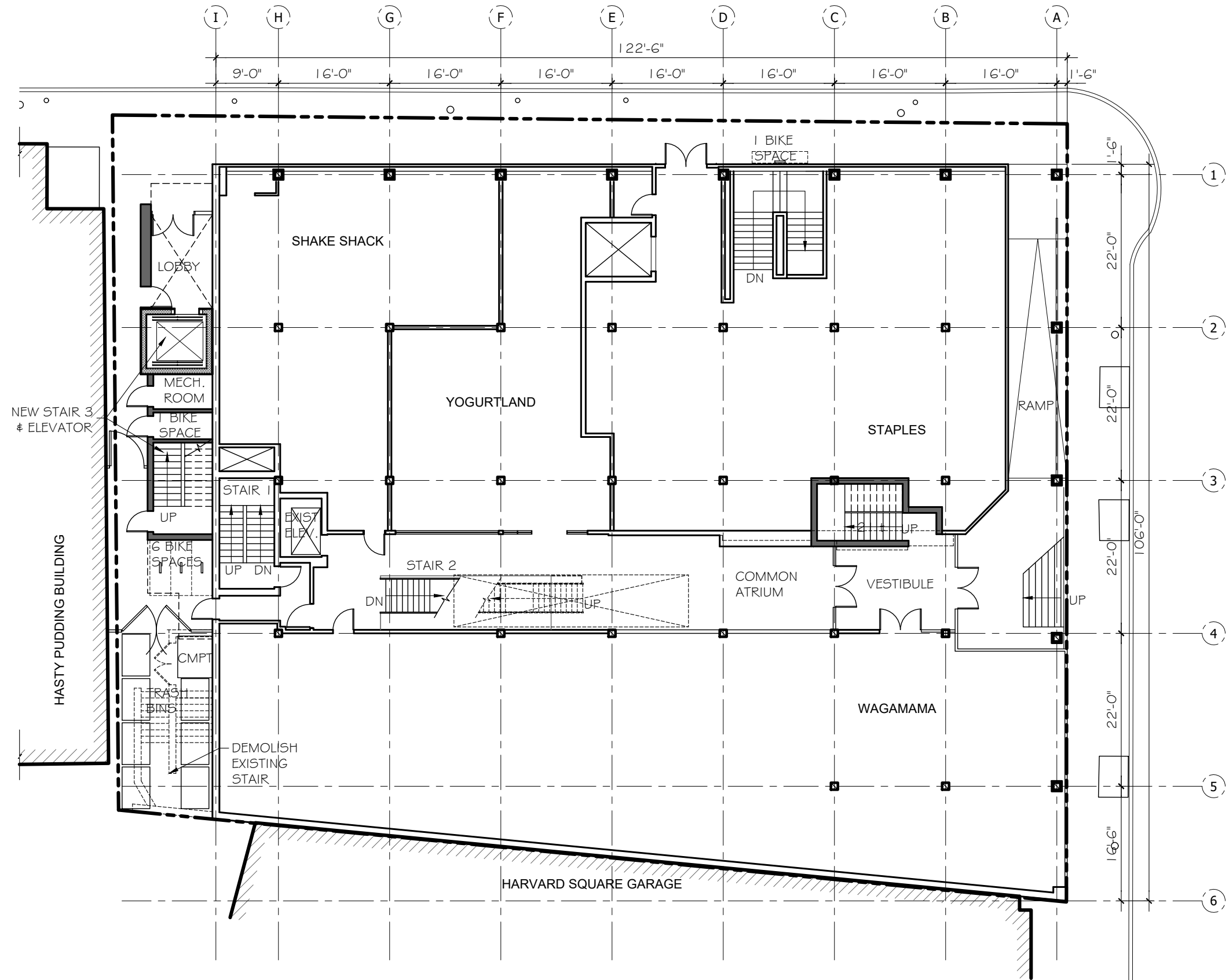
REVISION	DATE

SP APPLIC	28 FEB 2019
-----------	-------------

DRAWN BY	REVIEWED BY
ACW	PQ

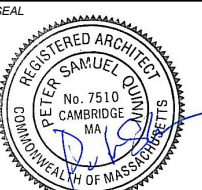
SHEET

**A1.1**



**1 FIRST FLOOR**  
SCALE 1/16" = 1'-0"





CONSULTANT

PROJECT  
**ADDITION TO 57 JFK ST**  
57 JFK STREET  
CAMBRIDGE, MA

PREPARED FOR  
**RAJ & RAJ LLC**

1299 BEACON ST  
BROOKLINE, MA 02446

DRAWING TITLE  
**THIRD FLOOR PLAN**

NO CHANGE FROM PREVIOUSLY APPROVED SPECIAL PERMIT  
SCALE AS NOTED

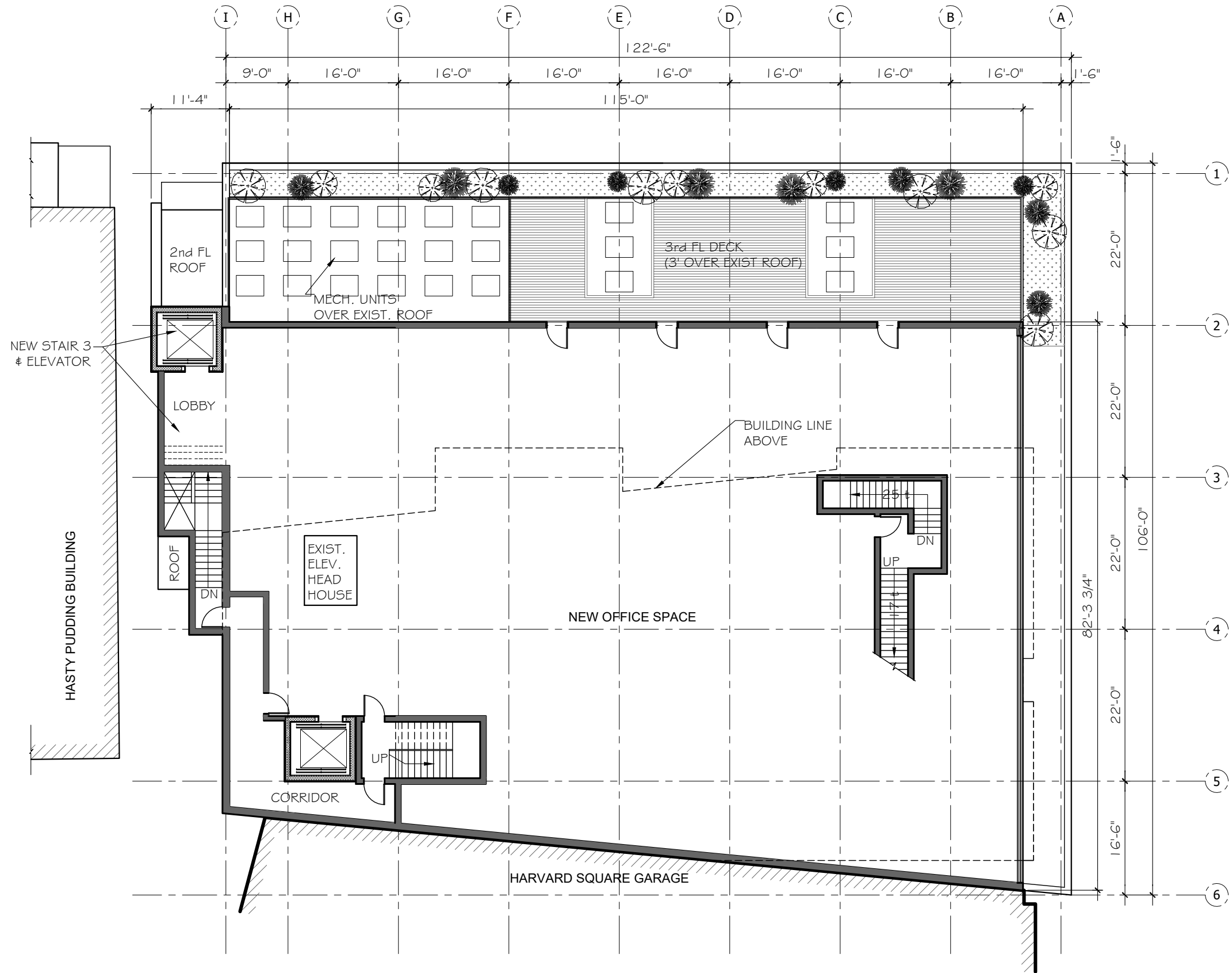
REVISION	DATE

SP APPLIC	28 FEB 2019
-----------	-------------

DRAWN BY ACW	REVIEWED BY PQ
-----------------	-------------------

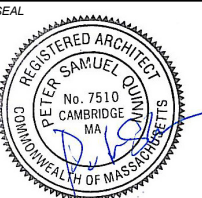
SHEET

**A1.3**



**1 PROPOSED THIRD FLOOR**  
SCALE 1/16" = 1'-0"





CONSULTANT

PROJECT  
**ADDITION TO 57 JFK ST**  
57 JFK STREET  
CAMBRIDGE, MA

PREPARED FOR  
RAJ & RAJ LLC

1299 BEACON ST  
BROOKLINE, MA 02446

DRAWING TITLE  
**FOURTH FLOOR PLAN**

NO CHANGE FROM PREVIOUSLY APPROVED SPECIAL PERMIT  
SCALE AS NOTED

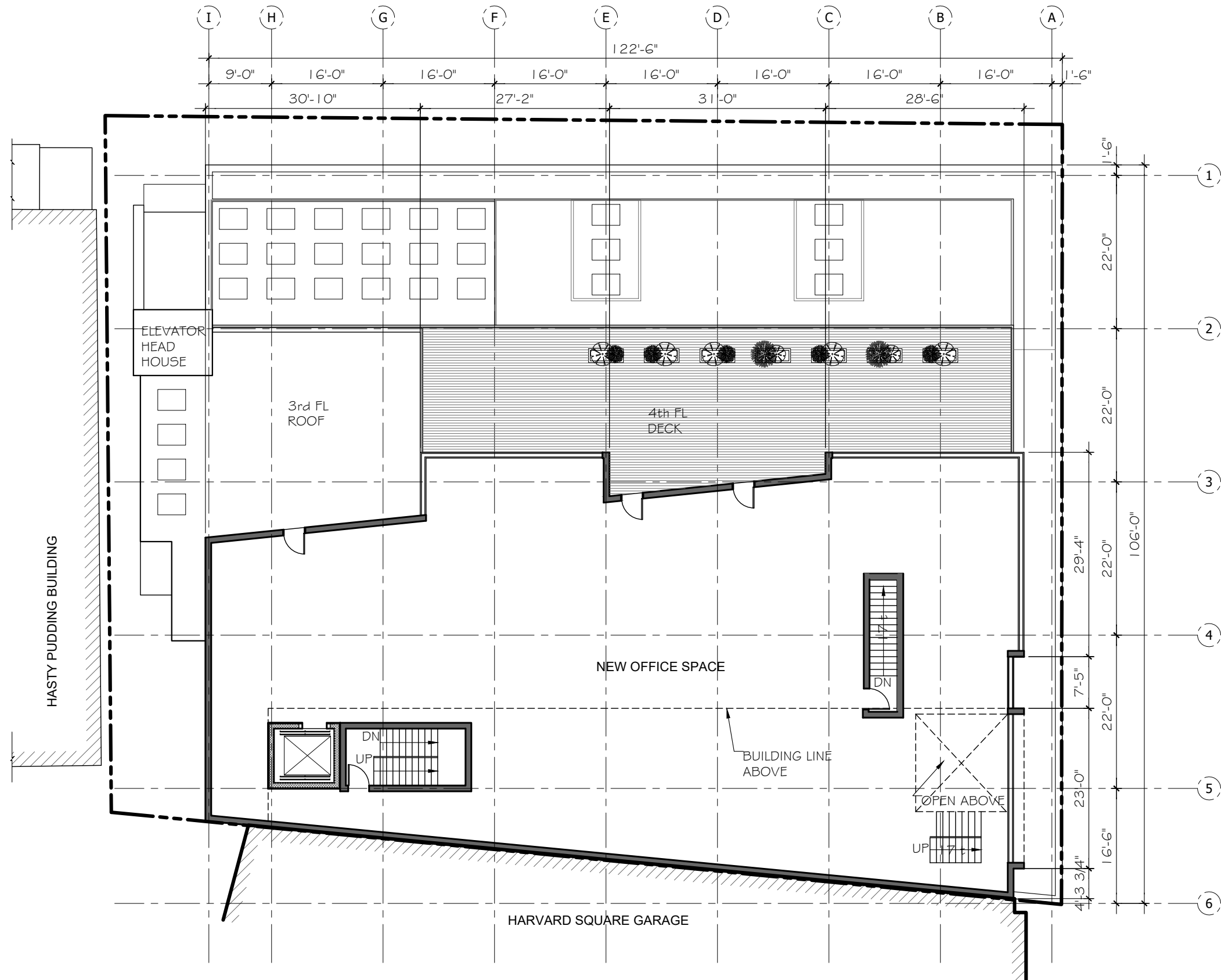
REVISION	DATE

SP APPLIC	28 FEB 2019
-----------	-------------

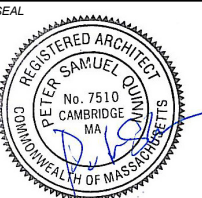
DRAWN BY ACW	REVIEWED BY PQ
-----------------	-------------------

SHEET

**A1.4**



**1 PROPOSED FOURTH FLOOR**  
SCALE 1/16" = 1'-0"



CONSULTANT

PROJECT  
**ADDITION TO  
57 JFK ST**  
57 JFK STREET  
CAMBRIDGE, MA

PREPARED FOR  
**RAJ & RAJ LLC**

1299 BEACON ST  
BROOKLINE, MA 02446

DRAWING TITLE  
**MEZZANINE  
LEVEL**

NO CHANGE FROM  
PREVIOUSLY  
APPROVED  
SPECIAL PERMIT  
SCALE AS NOTED

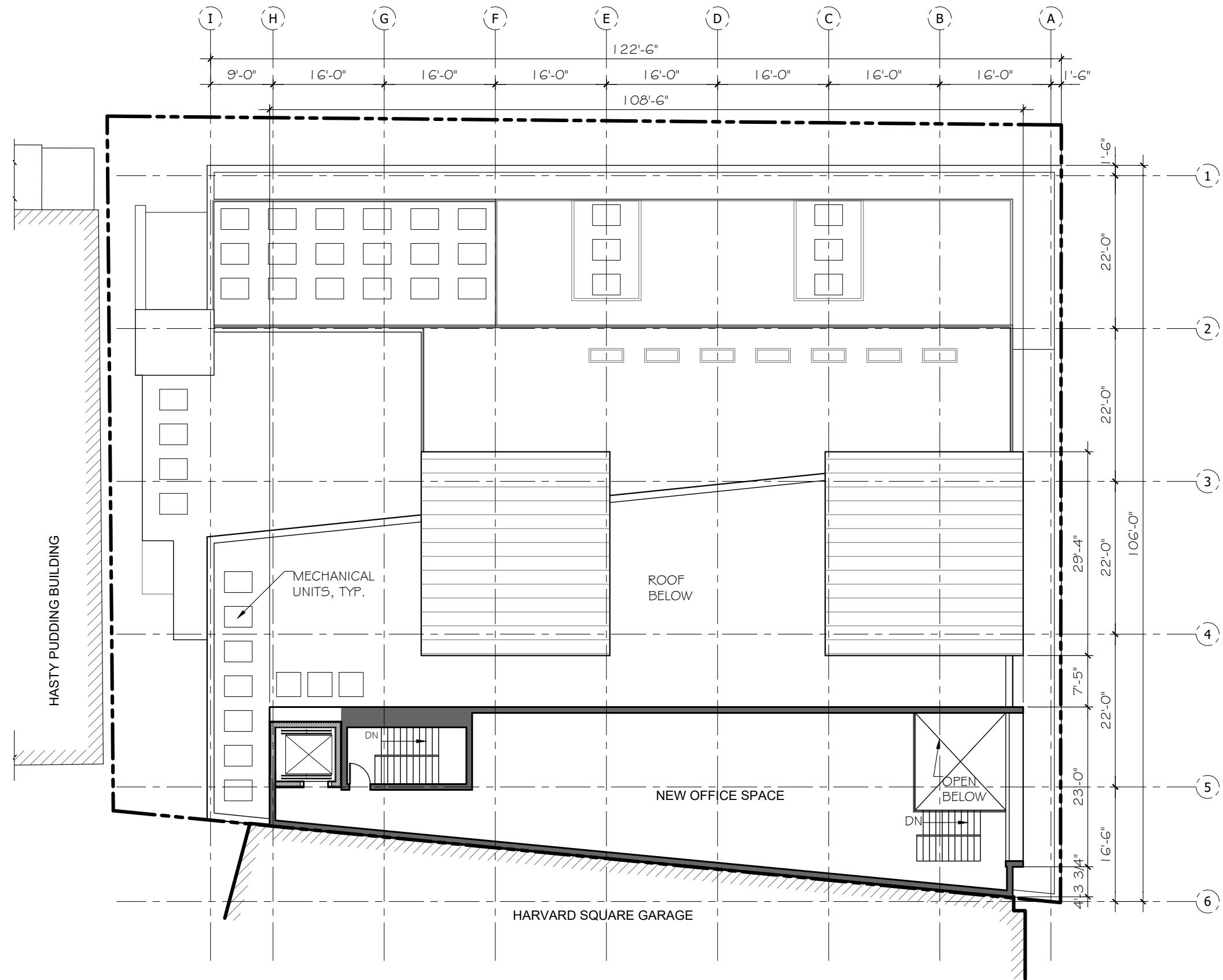
REVISION | DATE

SP APPLIC | 28 FEB 2019

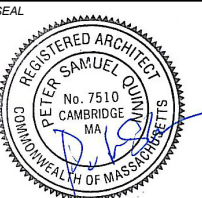
DRAWN BY | REVIEWED BY  
ACW | PQ

SHEET

**A1.5**



**1 PROPOSED MEZZANINE LEVEL**  
SCALE 1/16" = 1'-0"



CONSULTANT

PROJECT  
**ADDITION TO  
57 JFK ST**  
57 JFK STREET  
CAMBRIDGE, MA

PREPARED FOR  
**RAJ & RAJ LLC**

1299 BEACON ST  
BROOKLINE, MA 02446

DRAWING TITLE  
**ROOF PLAN**

NO CHANGE FROM  
PREVIOUSLY  
APPROVED  
SPECIAL PERMIT  
SCALE AS NOTED

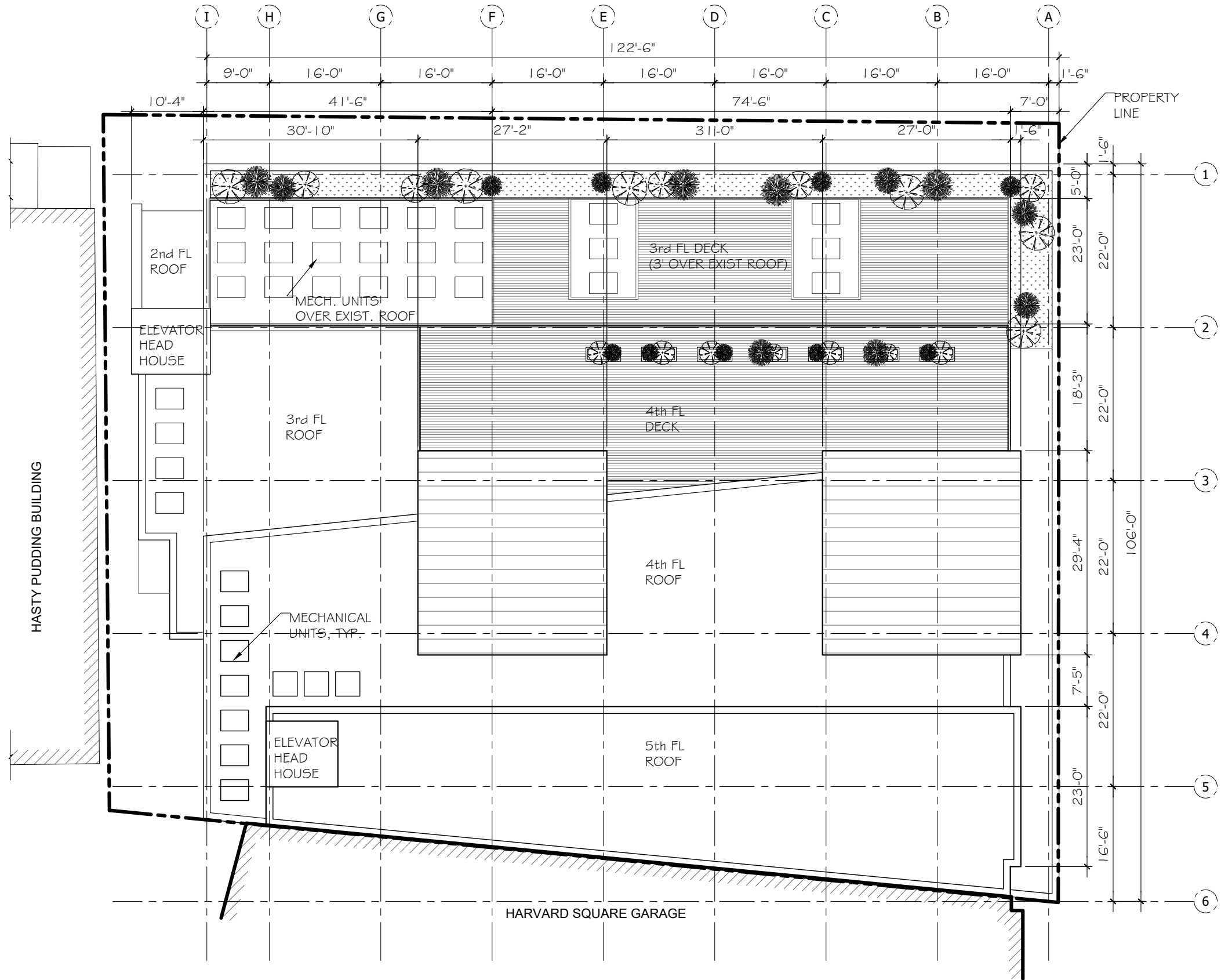
REVISION	DATE

SP APPLIC	28 FEB 2019
-----------	-------------

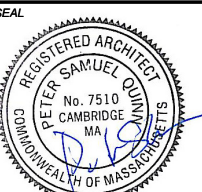
DRAWN BY ACW	REVIEWED BY PQ
-----------------	-------------------

SHEET

**A1.6**



**1** PROPOSED ROOF PLAN  
SCALE 1/16" = 1'-0"



CONSULTANT

PROJECT  
**ADDITION TO 57 JFK ST**  
 57 JFK STREET  
 CAMBRIDGE, MA

PREPARED FOR  
**RAJ & RAJ LLC**  
 1299 BEACON ST  
 BROOKLINE, MA 02446

DRAWING TITLE  
**ELEVATIONS**

NO CHANGE FROM PREVIOUSLY APPROVED SPECIAL PERMIT  
 SCALE AS NOTED

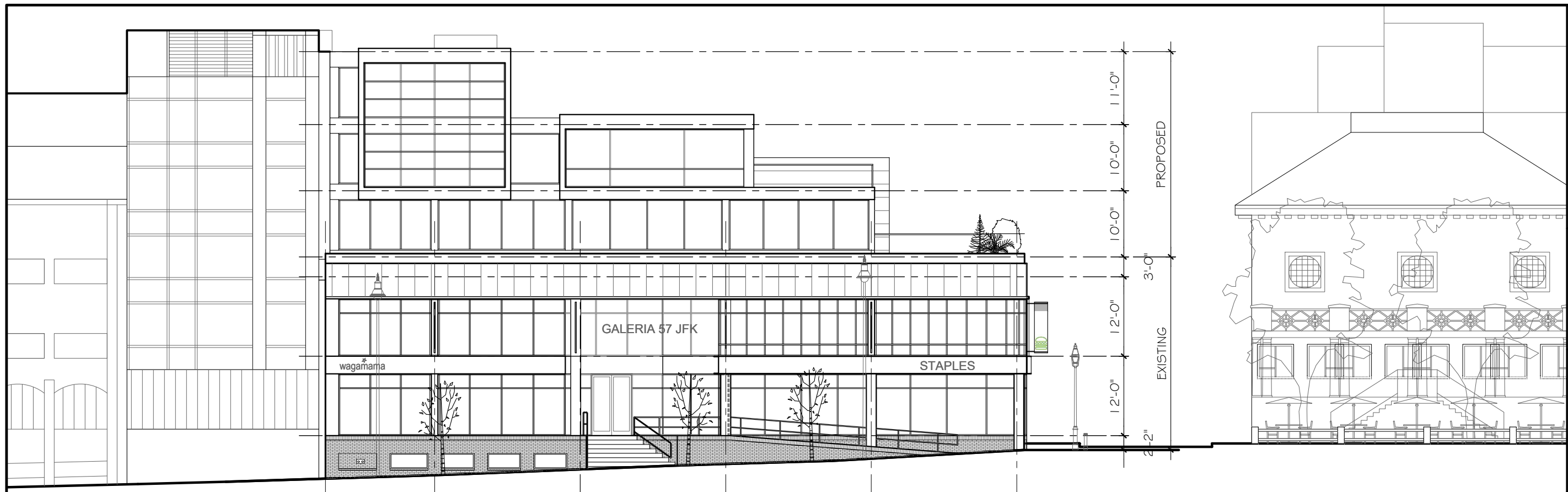
REVISION	DATE

SP APPLIC	28 FEB 2019
-----------	-------------

DRAWN BY ACW	REVIEWED BY PQ
-----------------	-------------------

SHEET

**A2.1**



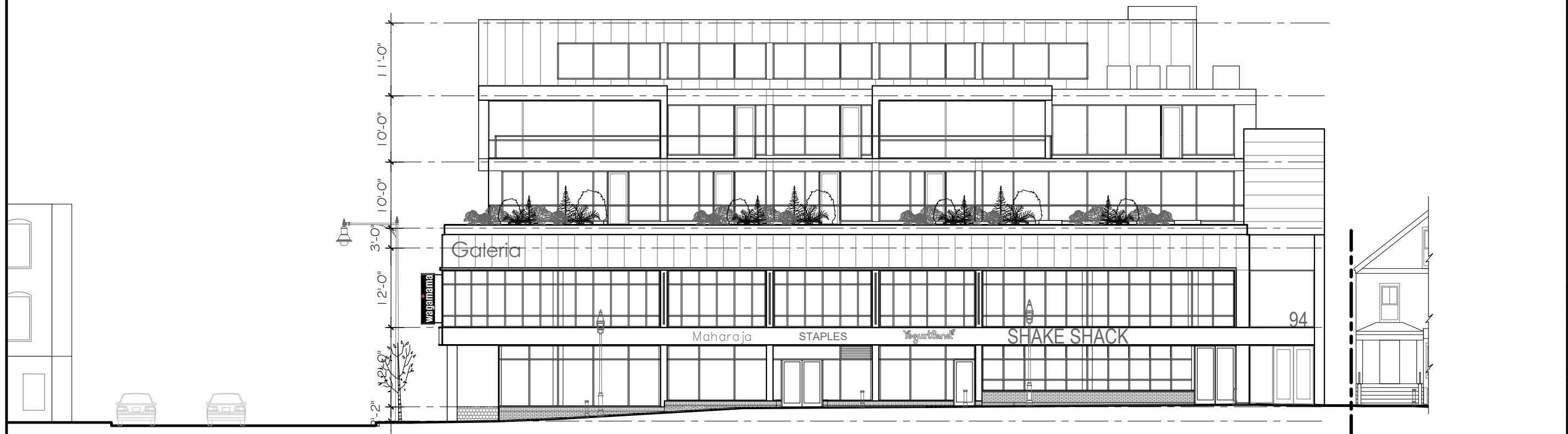
PARKING GARAGE

**1 JFK STREET ELEVATION**  
 SCALE 1/16" = 1'-0"



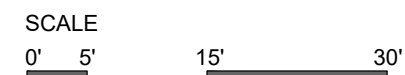
WINTHROP ST.

WINTHROP SQUARE



JFK STREET

**2 WINTHROP STREET ELEVATION**  
 SCALE 1/16" = 1'-0"



96 WINTHROP ST



# SPECIAL PERMIT APPLICATION

## 57 JFK STREET - EXISTING TENANT SPACES

57 JFK STREET, CAMBRIDGE, MA 02138

**PETER  
QUINN  
ARCHI  
TECTS**

PETER QUINN ARCHITECTS LLC  
259 ELM STREET SUITE 301  
SOMERVILLE, MA 02144  
PH 617-354-3989 FAX 617-868-0280

PROJECT:  
**ADDITION TO  
57 JFK ST**  
57 JFK STREET  
CAMBRIDGE, MA

PREPARED FOR:  
RAJ & RAJ LLC  
1299 BEACON ST  
BROOKLINE, MA 02446

DRAWING TITLE:  
**FIRST FLOOR PLAN  
TENANT SPACES**

DRAWN BY:

DATE:

SCALE: 1/16" = 1'-0"

REFERENCE:

SHEET

LIST OF DRAWINGS		SP APPLIC 28 FEB 2019
1	LOWER LEVEL TENANT SPACES	X
2	FIRST FLOOR TENANT SPACES	X
3	SECOND FLOOR TENANT SPACES	X

PREPARED BY:

ARCHITECT

PETER QUINN  
ARCHITECTS LLC

259 ELM ST, STE 301  
SOMERVILLE, MA 02144  
PH (617) 354-3989

# PETER QUINN ARCHITECTS

PETER QUINN ARCHITECTS LLC  
259 ELM STREET SUITE 301  
SOMERVILLE, MA 02144  
PH 617-354-3989 FAX 617-868-0280

PROJECT:  
**ADDITION TO  
57 JFK ST**

57 JFK STREET  
CAMBRIDGE, MA

PREPARED FOR:  
RAJ & RAJ LLC  
1299 BEACON ST  
BROOKLINE, MA 02446

DRAWING TITLE:  
**LOWER LEVEL  
(BELOW GRADE)  
TENANT SPACES**

DRAWN BY:

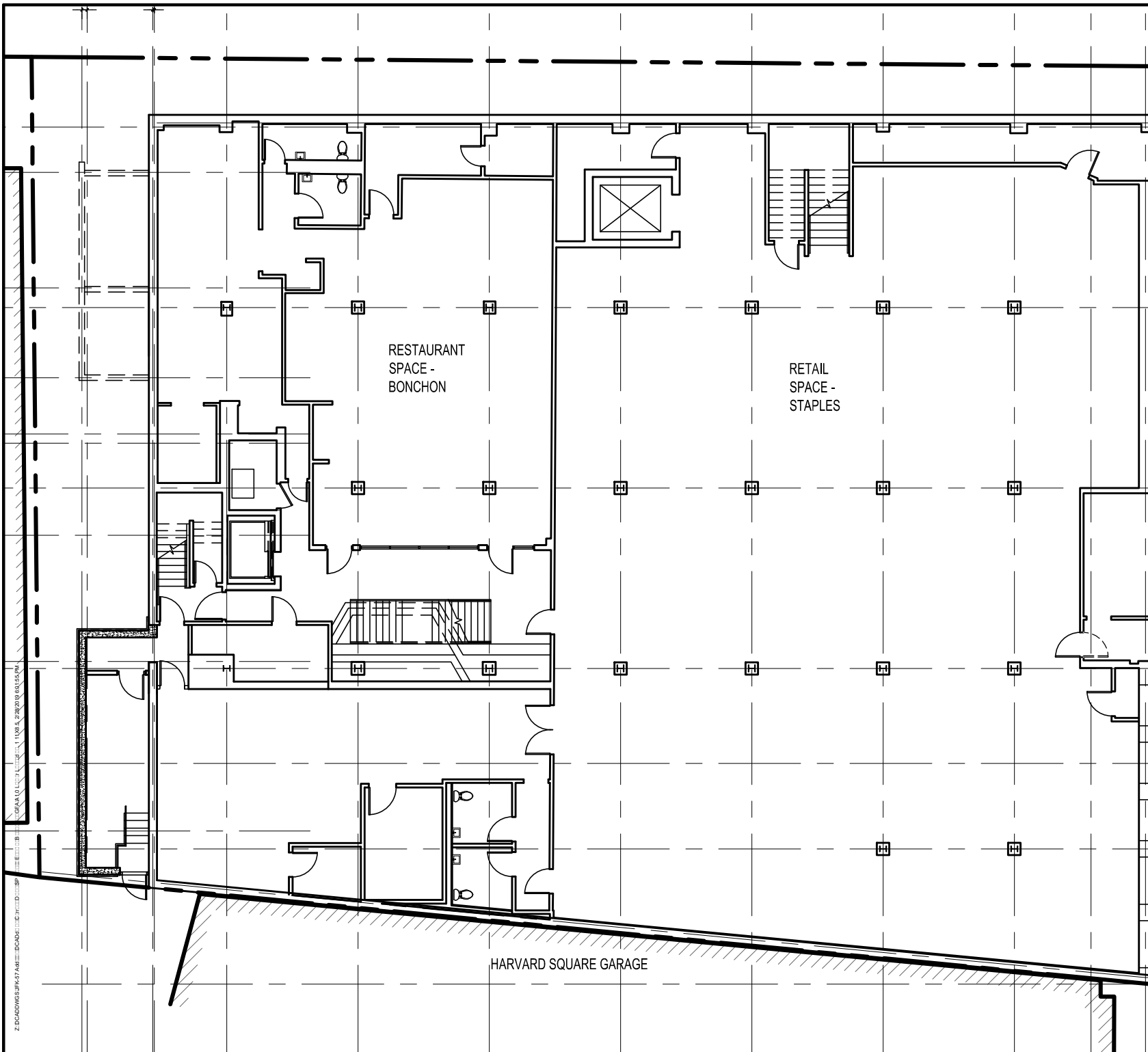
DATE:

SCALE: 1/16" = 1'-0"

REFERENCE:

SHEET

# 1



259 ELM STREET SUITE 301 SOMERVILLE, MA 02144

HARVARD SQUARE GARAGE





