

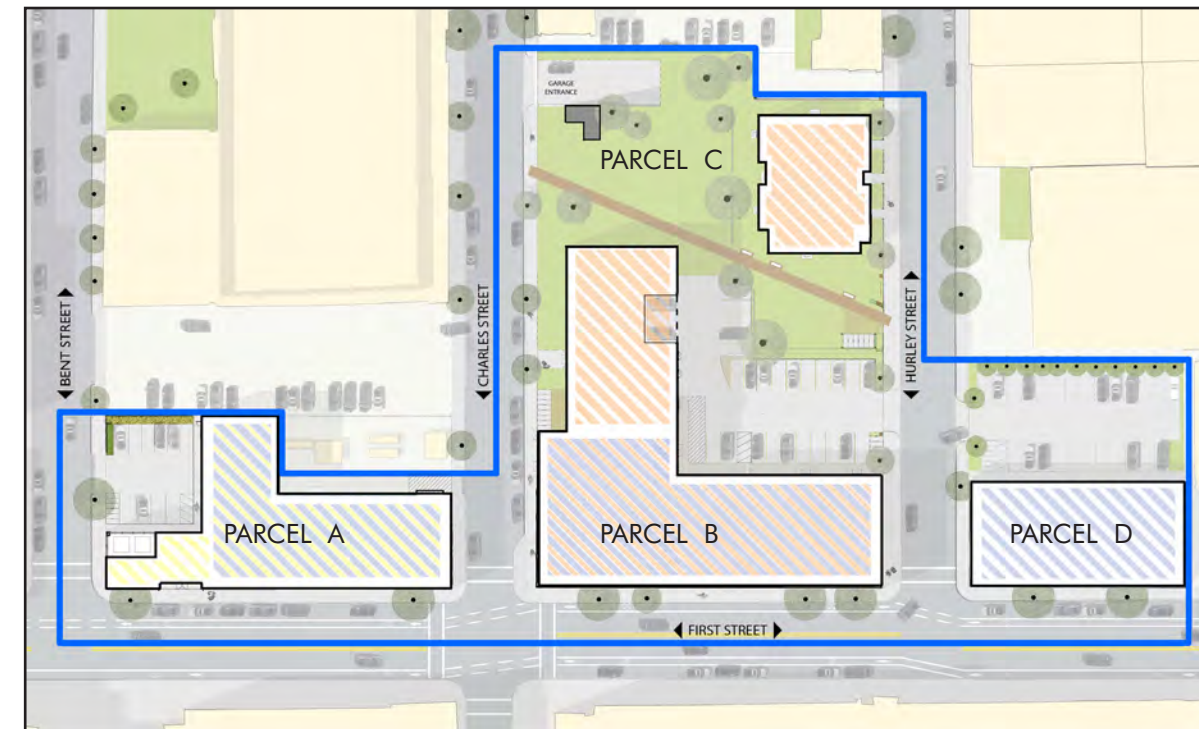


FIRST STREET

PUD & PROJECT REVIEW SPECIAL PERMIT APPLICATION
GRAPHICS PACKAGE



APPLICANT	First Street - US, LLC
ARCHITECT	Perkins Eastman
PLANNING	Boyes-Watson Architects



FIRST STREET PUD APPLICATION GRAPHICS PACKAGE

TABLE OF CONTENTS

EXHIBIT 1 | EXISTING LAND SURVEY

EXISTING SITE SURVEY

FIGURE 1

EXHIBIT 2 | AMENDED DEVELOPMENT PARCEL

PB #231 APPROVED DEVELOPMENT PARCEL

FIGURE 2

APPLICANT'S PROPOSED DEVELOPMENT PARCEL

FIGURE 3

EXHIBIT 3 | GFA DIAGRAM

PROPOSED GFA SITE PLAN

FIGURE 4

EXHIBIT 4 | EXISTING SITE PHOTOS

PARCEL A EXISTING SITE PHOTOS

FIGURE 5

PARCEL B & C EXISTING CONDITIONS

FIGURE 6

PARCEL D EXISTING SITE PHOTOS

FIGURE 7

EXHIBIT 5 | NEIGHBORHOOD MAPS

CONTEXT SITE PLAN AND OPEN SPACE

FIGURE 8

TRANSPORTATION NETWORK MAP

FIGURE 9

CONNECTIONS MAP

FIGURE 10

DEVELOPMENT PARCEL OPEN SPACE DIAGRAM

FIGURE 11

EAST CAMBRIDGE ZONING & PUD OVERLAY

FIGURE 12

EXHIBIT 6 | ARCHITECTURE

DESIGN PROPOSAL INTRO

FIGURE 13

PROPOSED SITE PLAN

FIGURE 14

PROPOSED LANDSCAPE PLAN

FIGURE 15

PARCEL A | EXISTING CONDITION @ BENT STREET CORNER

FIGURE 16

PARCEL A | PROPOSED RETAIL AND OFFICE RENDER

FIGURE 17

PARCEL A | EXISTING CONDITION @ CHARLES STREET CORNER

FIGURE 18

PARCEL A | PROPOSED OFFICE RENDER

FIGURE 19

PARCEL B | EXISTING CONDITION @ CHARLES STREET CORNER

FIGURE 20

PARCEL B | PROPOSED RESIDENTIAL AND RETAIL RENDER

FIGURE 21

PARCEL B | EXISTING CONDITION PEDESTRIAN @ CHARLES STREET

FIGURE 22

PARCEL B | PROPOSED RESIDENTIAL RENDER

FIGURE 23

PARCEL B | EXISTING CONDITION @ CHARLES STREET TOWARDS FIRST STREET

FIGURE 24

PARCEL B | PROPOSED RESIDENTIAL RENDER

FIGURE 25

PARCEL C | EXISTING CONDITION @ CHARLES STREET MID-BLOCK

FIGURE 26

PARCEL C | PROPOSED MIDBLOCK CONNECTION RENDER

FIGURE 27

PARCEL C | EXISTING CONDITION @ HURLEY STREET MID-BLOCK

FIGURE 28

PARCEL C | PROPOSED RESIDENTIAL RENDER

FIGURE 29

TABLE OF CONTENTS

PARCEL C | EXISTING CONDITION @ HURLEY STREET TOWARDS SECOND STREET

FIGURE 30

PARCEL C | PROPOSED RESIDENTIAL STREET EDGE RENDER

FIGURE 31

PARCEL C | EXISTING CONDITION HURLEY STREET EDGE

FIGURE 32

PARCEL C | PROPOSED HURLEY STREET EDGE RENDER

FIGURE 33

PARCEL B | EXISTING CONDITION @ FIRST STREET PEDESTRIAN LEVEL

FIGURE 34

PARCEL B | PROPOSED RESIDENTIAL RENDER

FIGURE 35

PARCEL A | GROUND LEVEL

FIGURE 36

PARCEL A | LEVEL 2-4

FIGURE 37

PARCEL A | LEVEL 5

FIGURE 38

PARCEL B | LOWER LEVEL

FIGURE 39

PARCEL B | GROUND LEVEL

FIGURE 40

PARCEL B | LEVEL 2

FIGURE 41

PARCEL B | LEVEL 3-5

FIGURE 42

PARCEL B | LEVEL 6

FIGURE 43

PARCEL C | GROUND LEVEL

FIGURE 44

PARCEL C | LEVEL 2

FIGURE 45

PARCEL C | LEVEL 3

FIGURE 46

PARCEL C | LEVEL 4

FIGURE 47

FIRST STREET ELEVATION

FIGURE 48

FIRST STREET ELEVATION

FIGURE 49

FIRST STREET ELEVATION | OFFICE AND RESIDENTIAL BUILDINGS

FIGURE 50

HURLEY STREET ELEVATION | RESIDENTIAL BUILDING

FIGURE 51

MID-BLOCK ELEVATION | RESIDENTIAL BUILDING

FIGURE 52

MID-BLOCK ELEVATION | RESIDENTIAL BUILDING

FIGURE 53

CHARLES STREET ELEVATION | RESIDENTIAL BUILDING

FIGURE 54

CHARLES STREET ELEVATION | OFFICE BUILDING

FIGURE 55

MID-BLOCK ELEVATION | OFFICE BUILDING

FIGURE 56

BENT STREET ELEVATION | OFFICE BUILDING

FIGURE 57

EXHIBIT 7 | BICYCLE PARKING PLAN

BICYCLE PARKING PLAN | SHORT TERM PARKING LOCATIONS

FIGURE 58

BICYCLE PARKING PLAN | SHORT TERM BICYCLE COUNTS

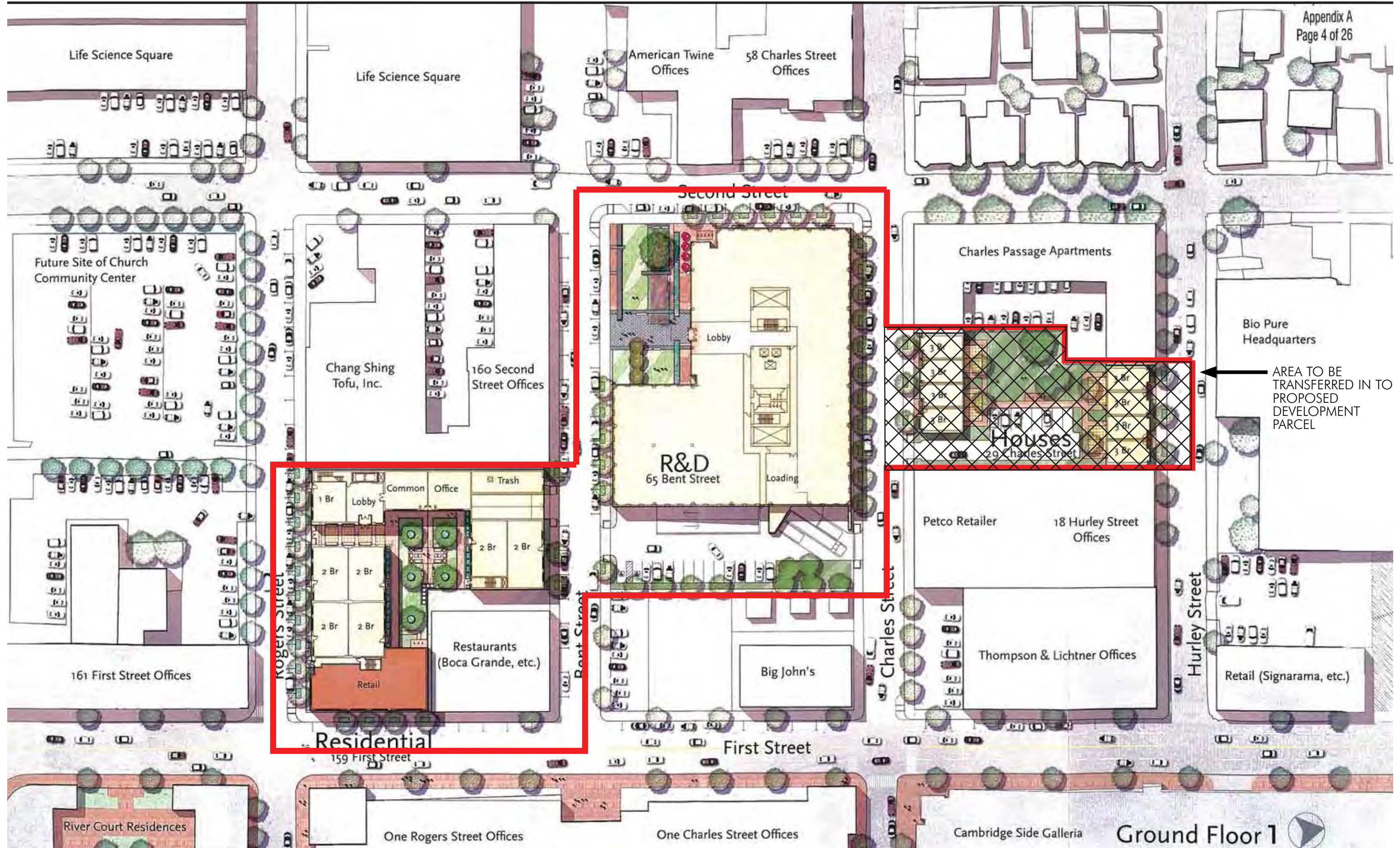
FIGURE 59

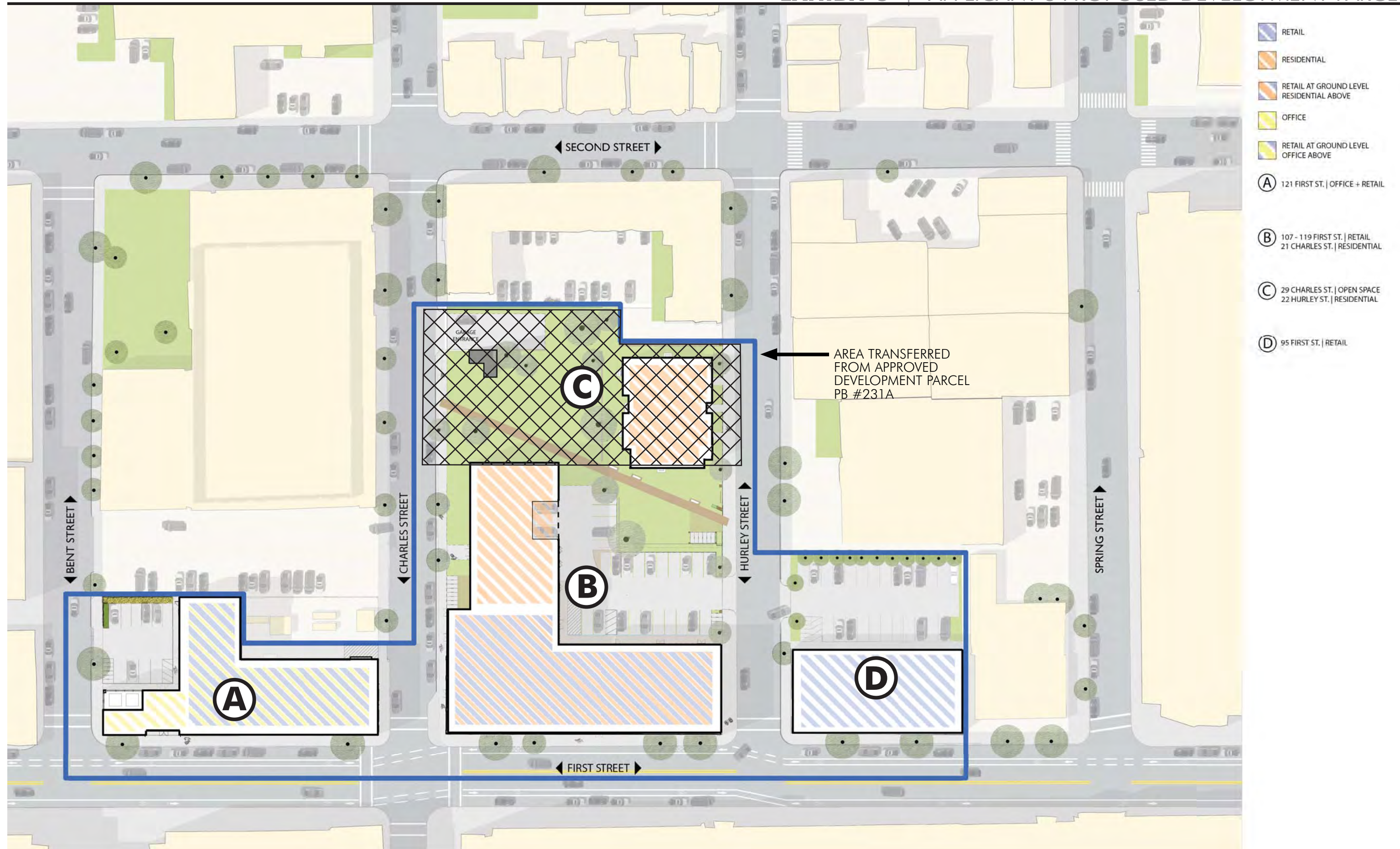
BICYCLE PARKING PLAN | LONG TERM PARKING IN LOWER LEVEL GARAGE

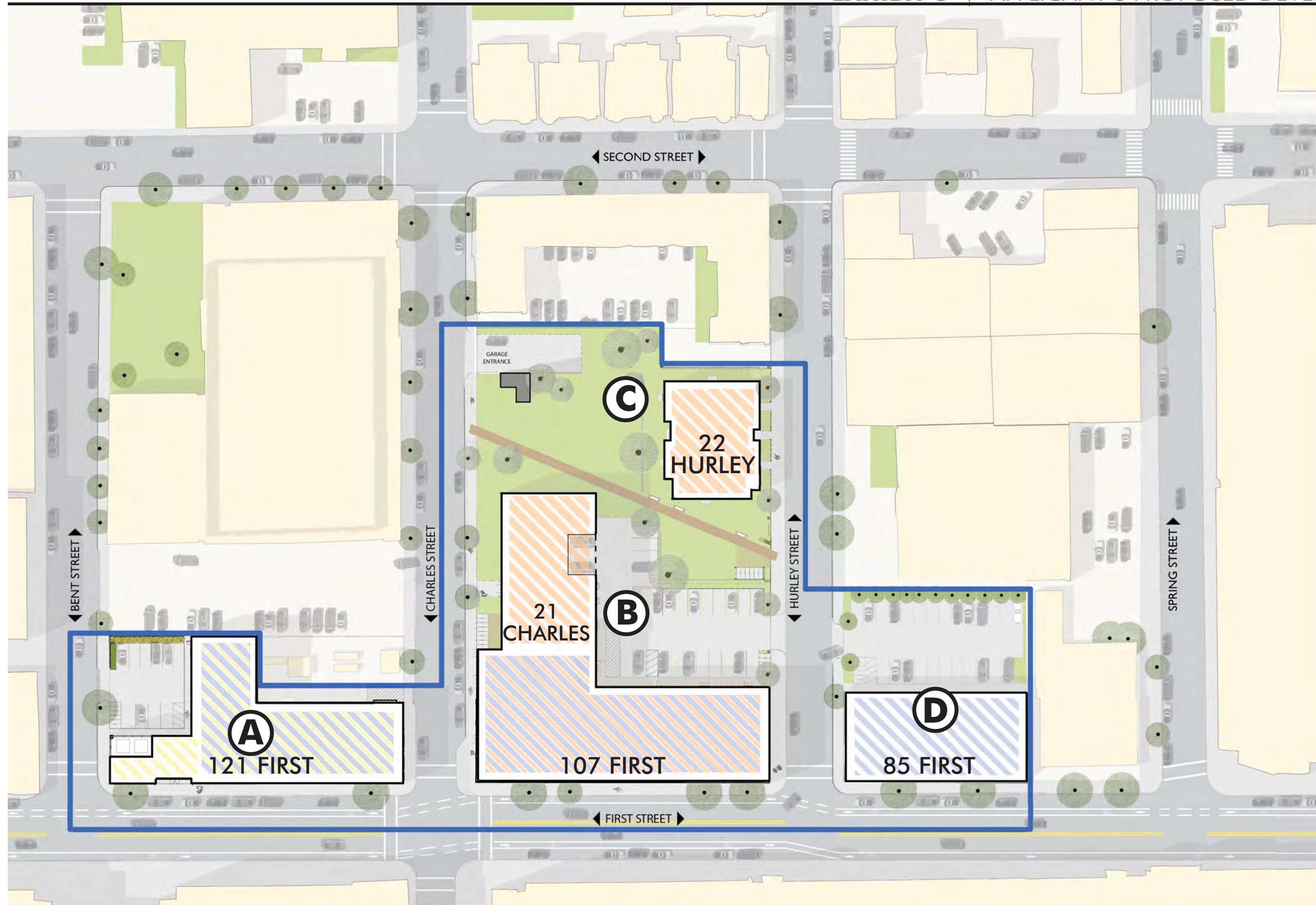
FIGURE 60

BICYCLE PARKING PLAN | TYPICAL BICYCLE SPACES

FIGURE 61







- RETAIL
 - RESIDENTIAL
 - RETAIL AT GROUND LEVEL
RESIDENTIAL ABOVE
 - OFFICE
 - RETAIL AT GROUND LEVEL
OFFICE ABOVE
- (A) 121 FIRST ST. | OFFICE + RETAIL
Retail GFA = 9,800 GSF
Office GFA = 46,010 GSF
 - (B) 107 - 119 FIRST ST. | RETAIL
21 CHARLES ST. | RESIDENTIAL
Retail GFA = 14,800 GSF
Residential GFA = 110,306 GSF
 - (C) 29 CHARLES ST. | OPEN SPACE
22 HURLEY ST. | RESIDENTIAL

Residential GFA = 20,182 GSF
 - (D) 95 FIRST ST. | RETAIL
Retail GFA = 7,750 GSF



VIEW FROM BENT STREET TO FIRST STREET CORNER

1



VIEW FROM FIRST STREET @ BENT STREET CORNER

2



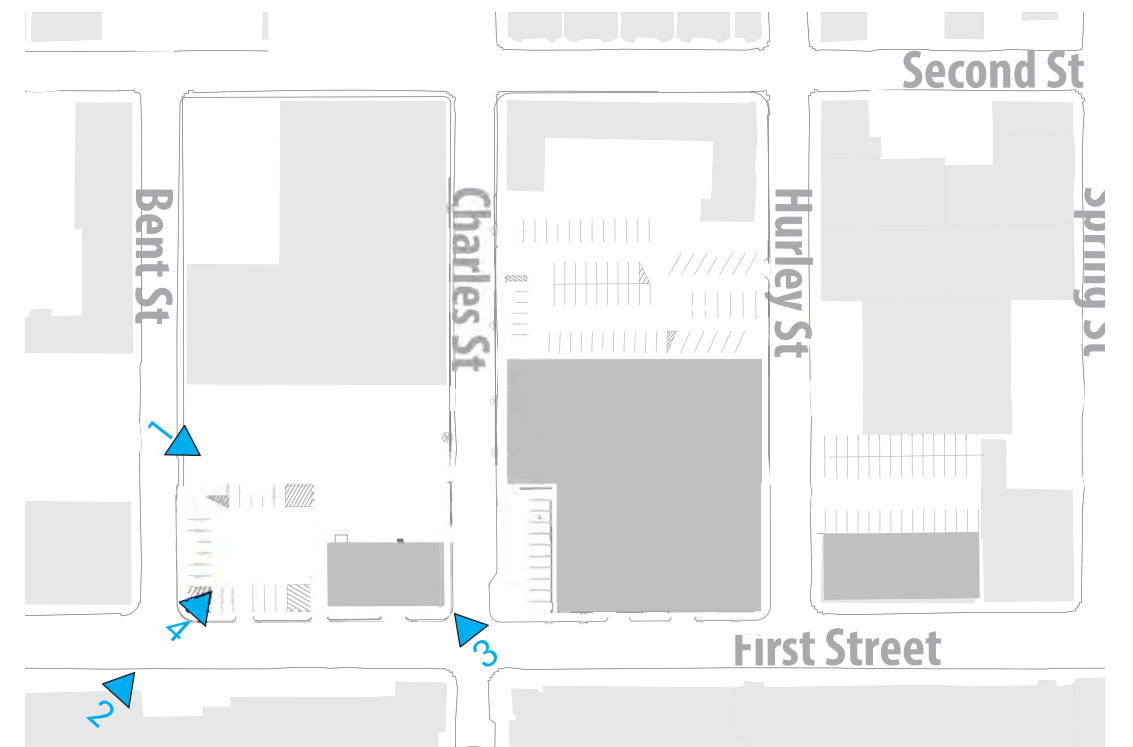
VIEW FROM FIRST STREET TOWARDS CHARLES STREET CORNER

3



VIEW FROM FIRST STREET @ BENT STREET CORNER

4





VIEW FROM CHARLES STREET @ MID BLOCK

1



VIEW FROM HURLEY STREET @ MID BLOCK

2



VIEW @ MID BLOCK EXISTING PARKING LOT

3



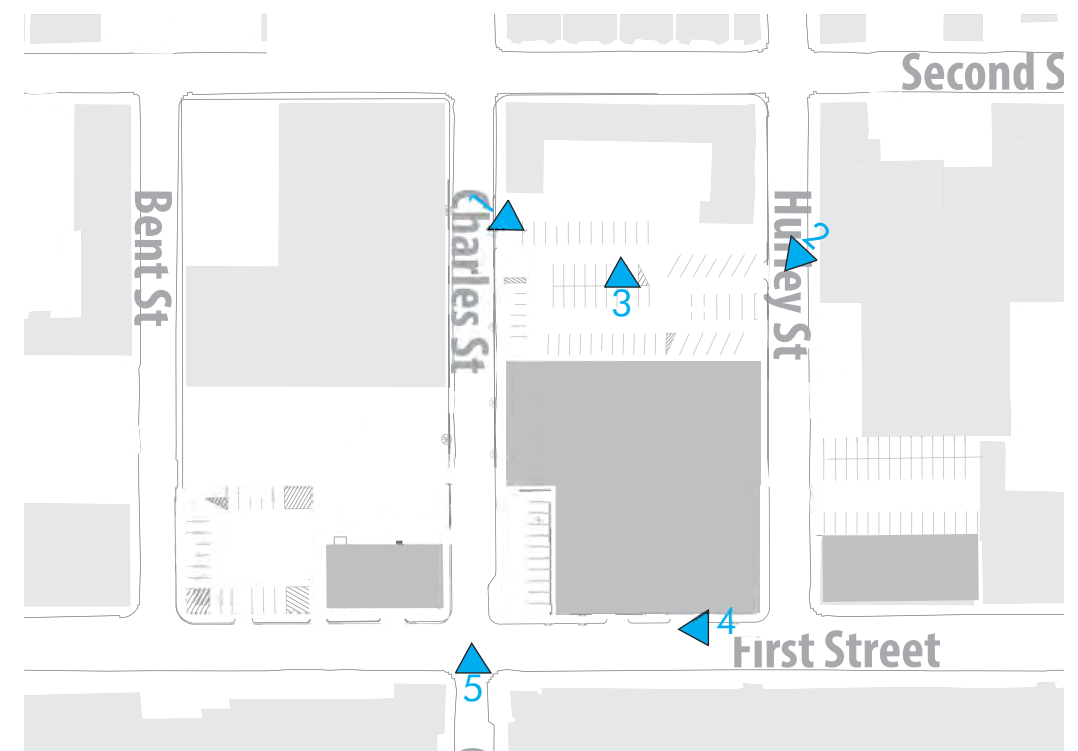
VIEW FROM FIRST STREET TOWARDS CHARLES STREET

4



VIEW FROM FIRST STREET @ CHARLES STREET CORNER

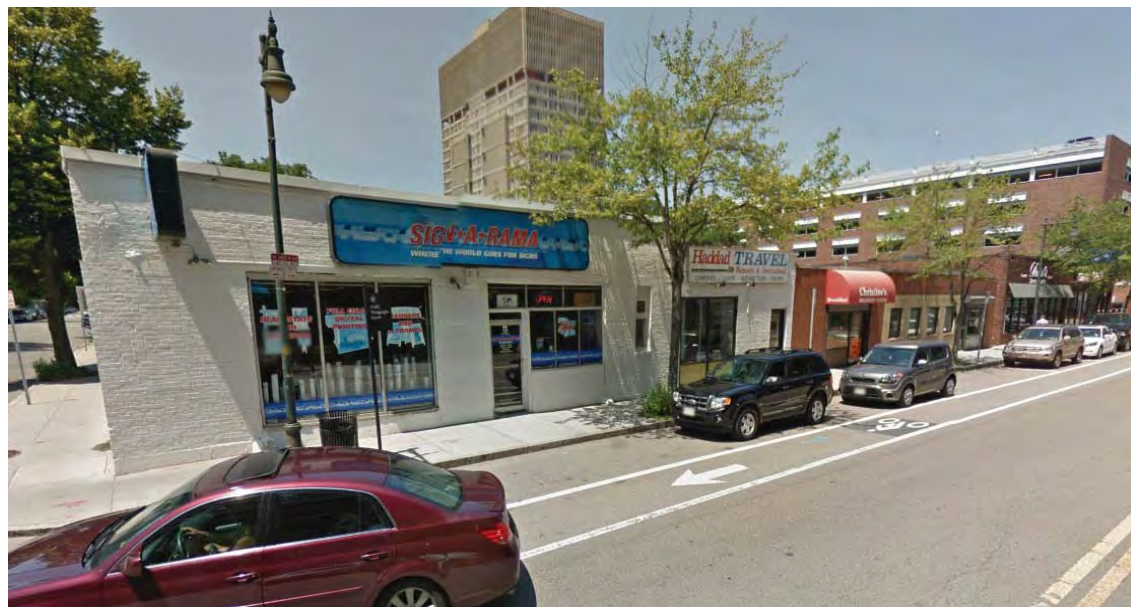
5





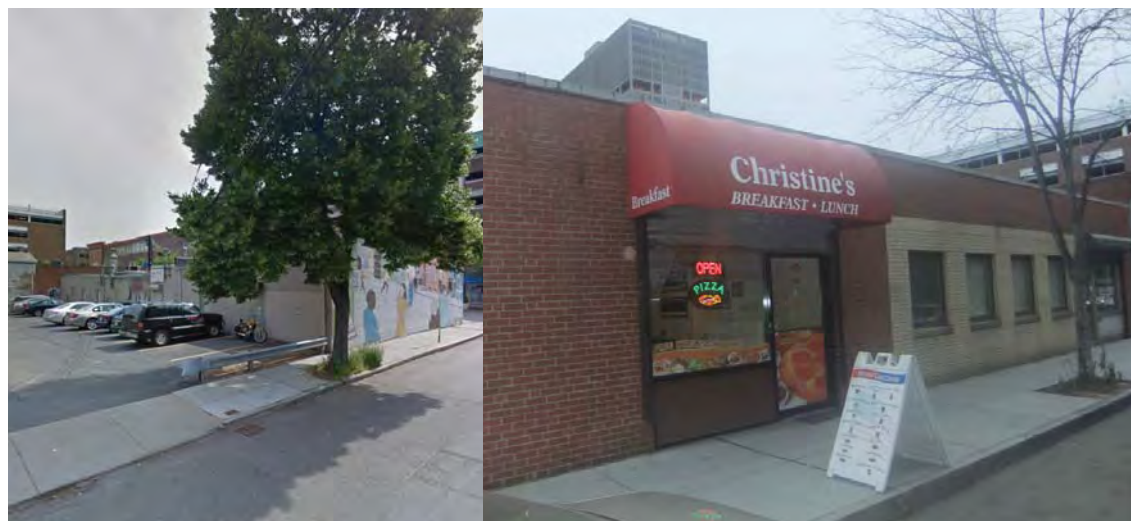
VIEW FROM FIRST STREET @ HURLEY STREET CORNER

1



VIEW FROM FIRST STREET @ BENT STREET CORNER

2



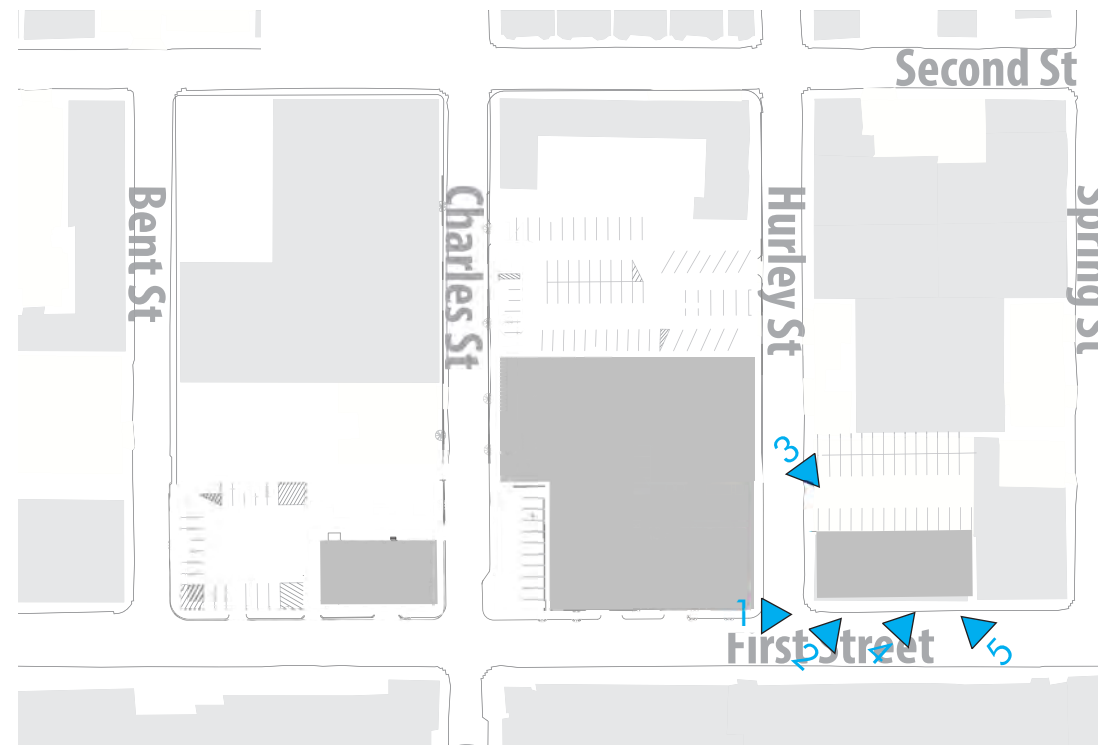
3

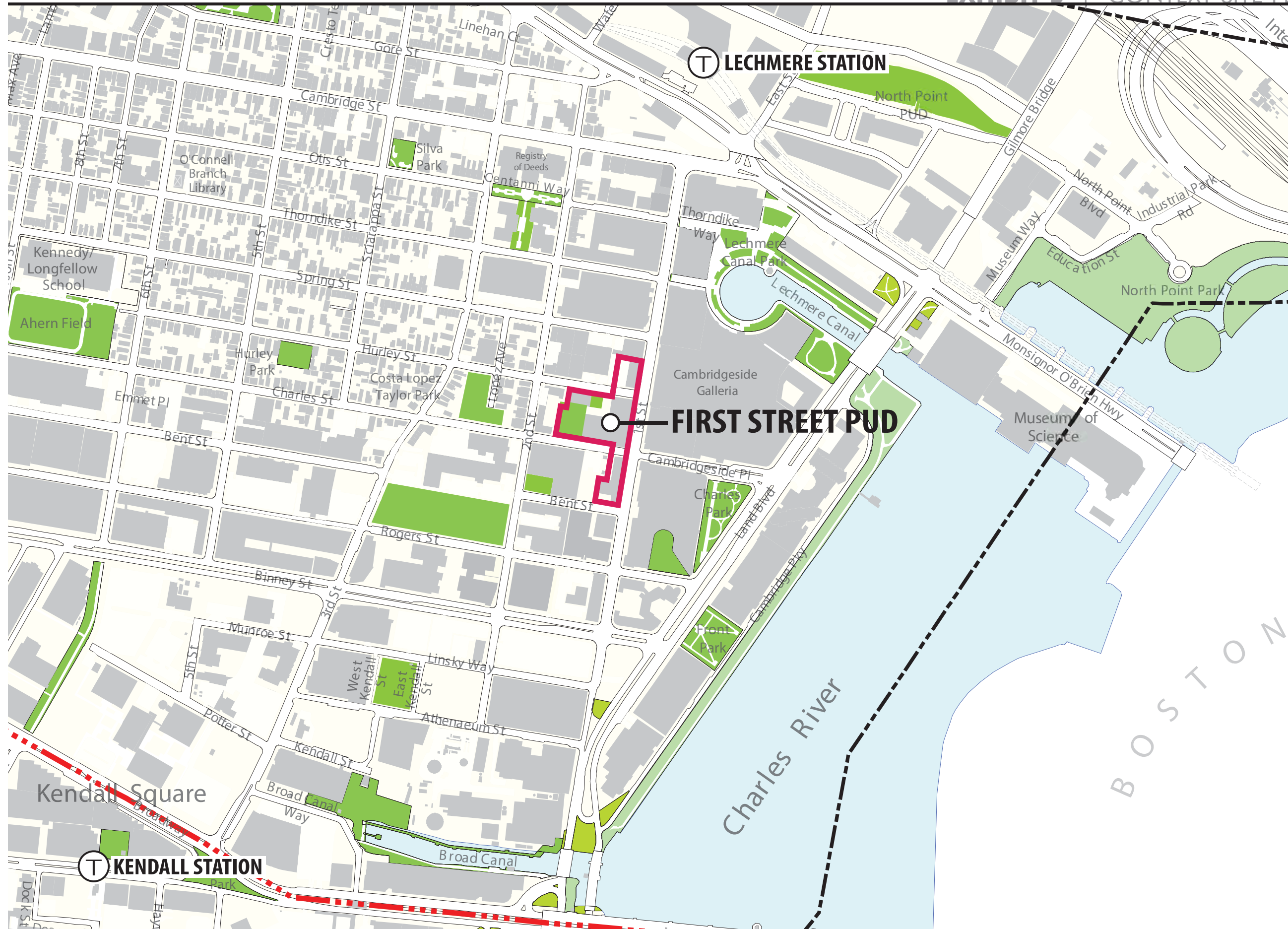
4



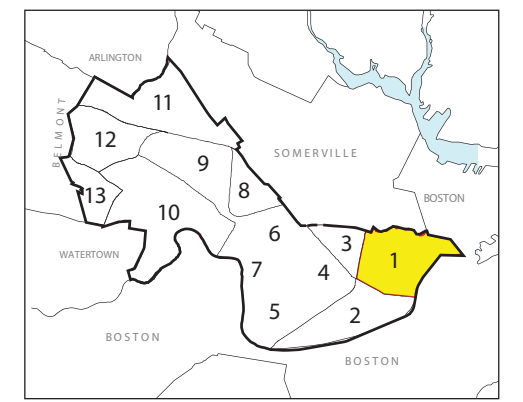
VIEW FROM FIRST STREET TOWARDS BENT STREET CORNER

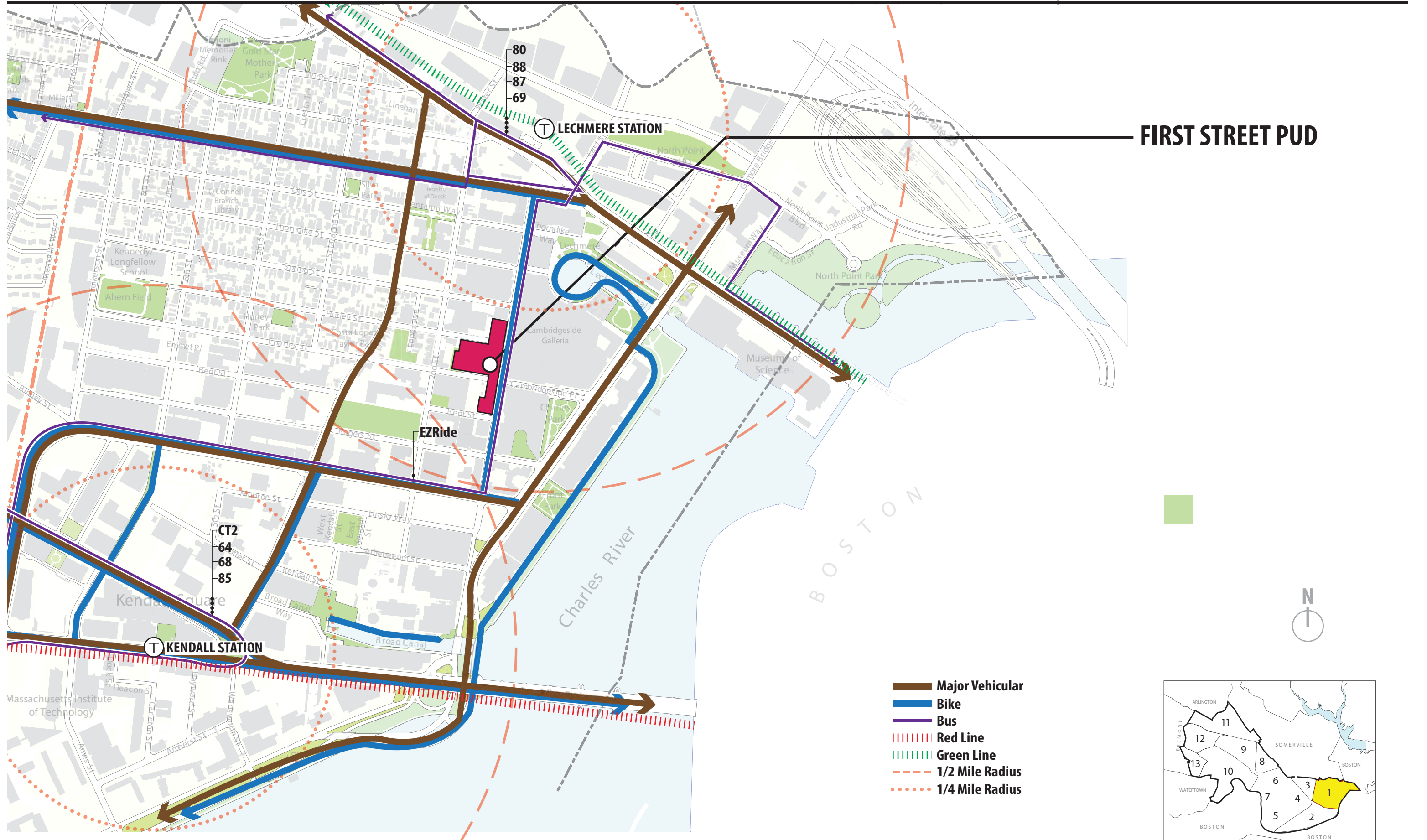
5












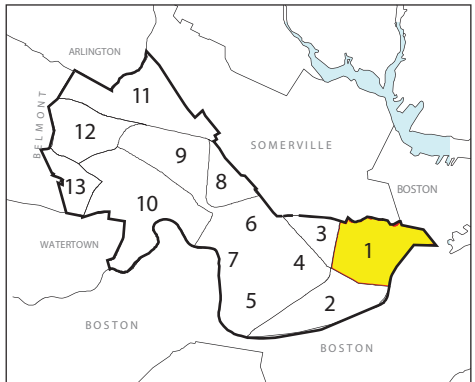
Green Space

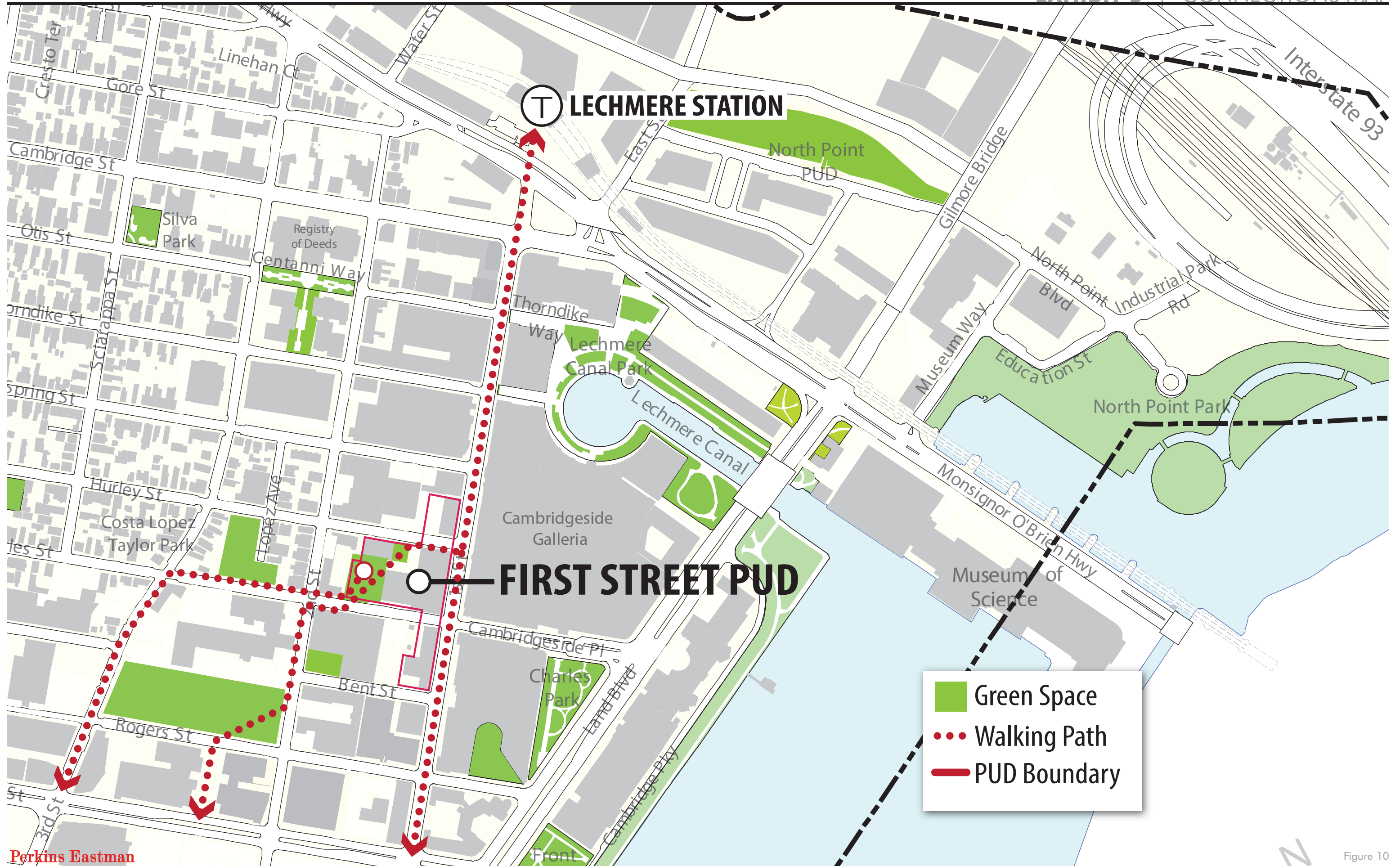


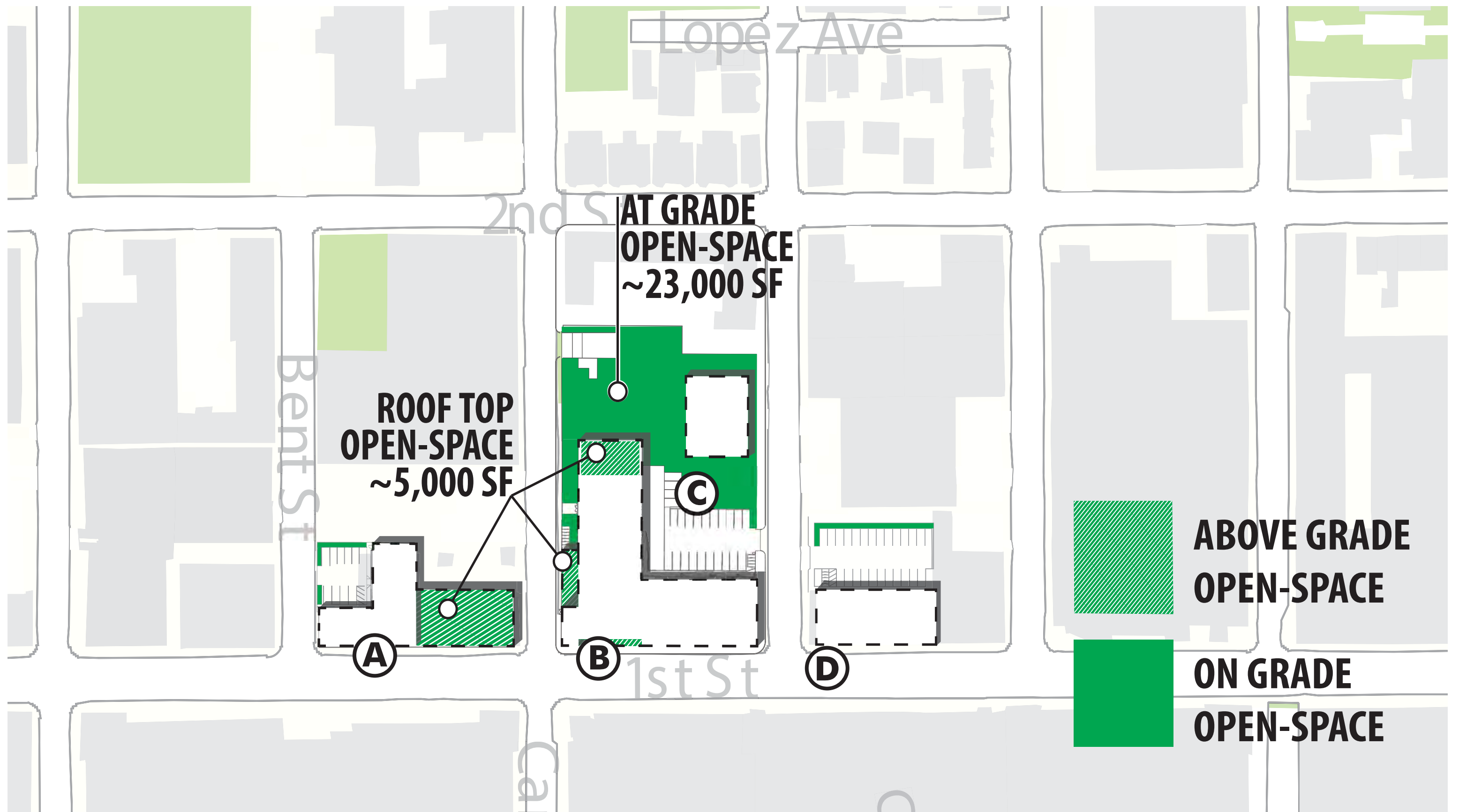


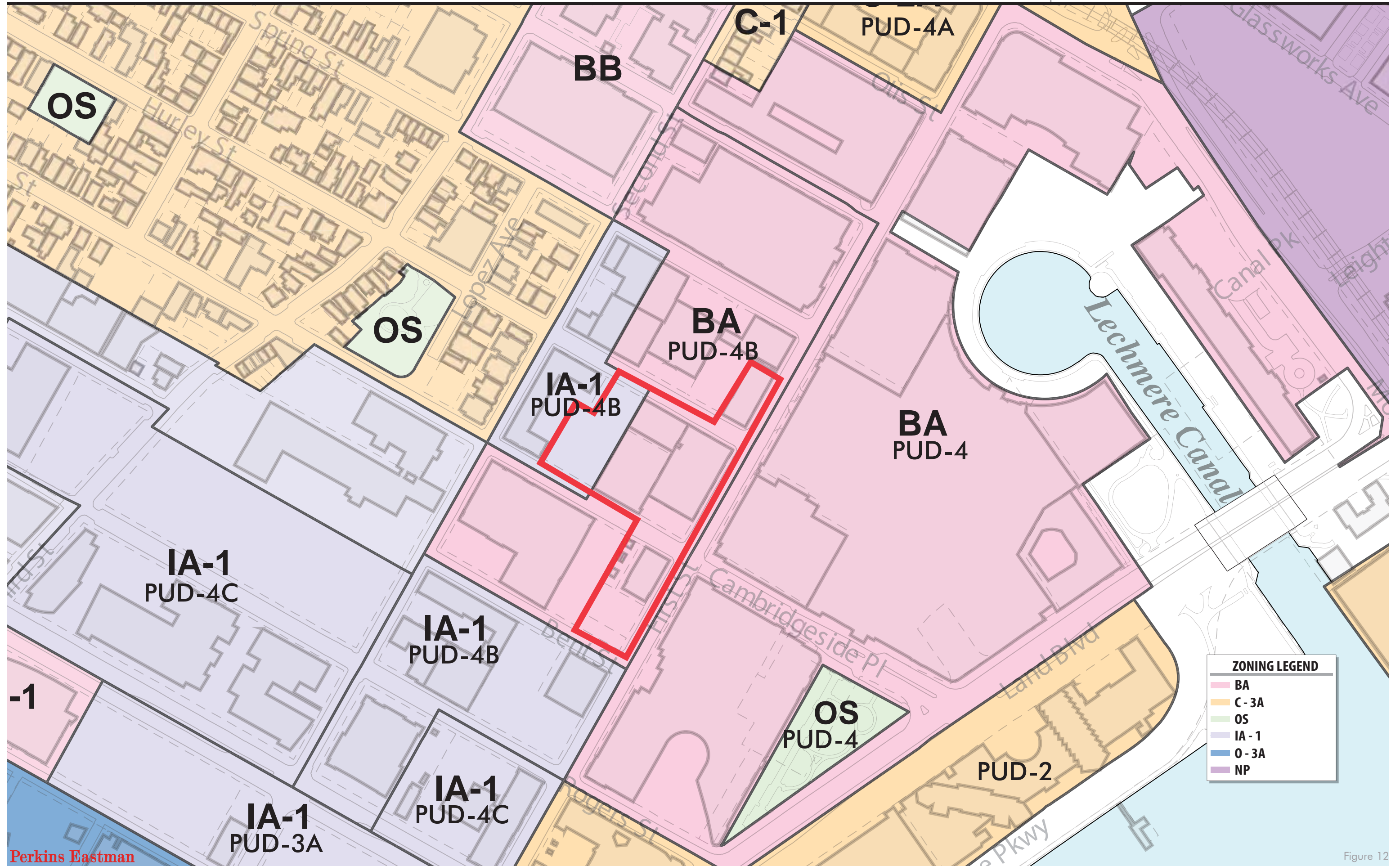
FIRST STREET PUD

-  Major Vehicular
-  Bike
-  Bus
-  Red Line
-  Green Line
-  1/2 Mile Radius
-  1/4 Mile Radius

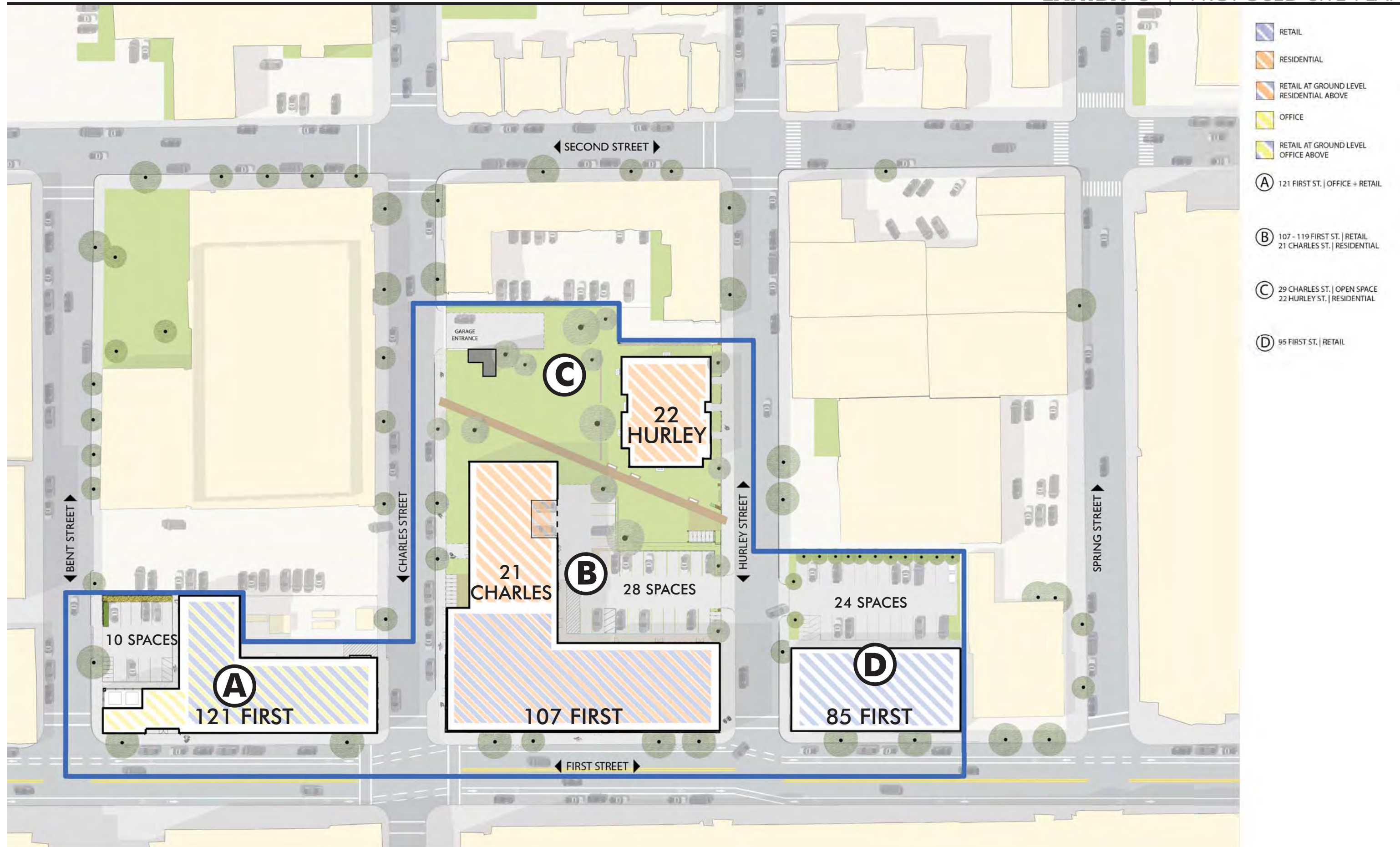








DESIGN PROPOSAL





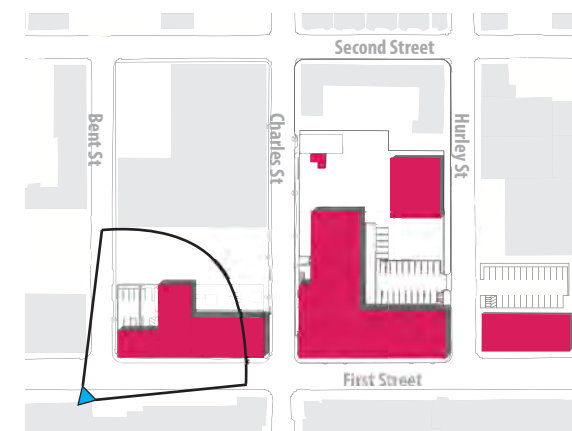


Figure 16

