



MIT KENDALL SQUARE NOMA

BUILDING 1 - ONE BROADWAY

December 5, 2017

ELKUS MANFREDI ARCHITECTS
LANDWORKS STUDIO

CONTENTS

UPDATES

1. Bike Station
2. Podium Facade

BIKE STATION



PUD REQUIREMENTS

- 800 SF AT NOMA
- BIKE STORAGE AREA
- CHANGING AREA
- LOCKERS

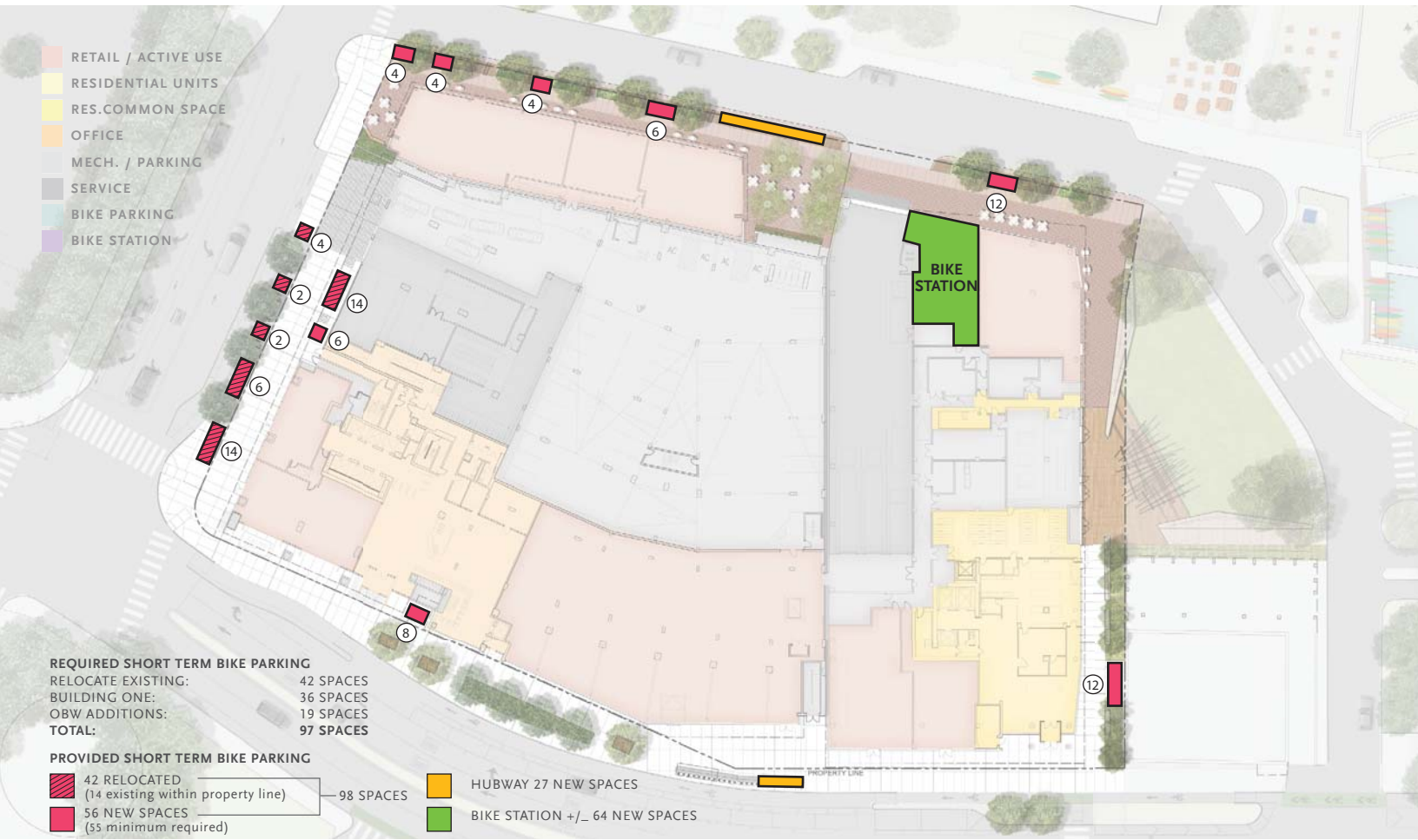
CHANGES SINCE MARCH 2017 PLANNING BOARD:

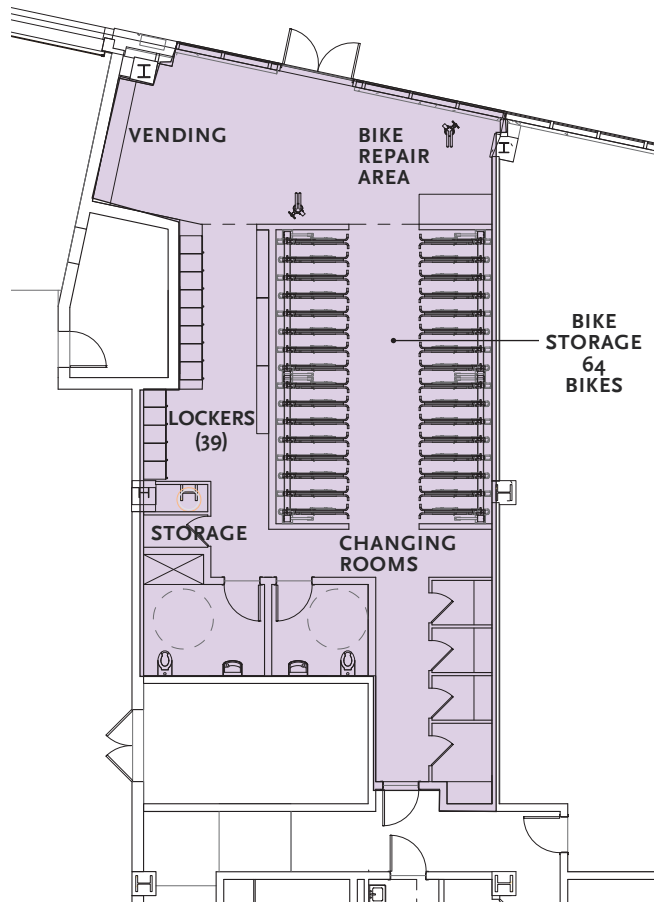
- DOUBLED IN SIZE TO 1600 SF
- PROMINENT LOCATION ON BROAD CANAL WAY
- TOILETS AND SHOWER FACILITIES ADDED
- SELF SERVICE INDOOR BIKE STATION
- SECURE 24/7 ACCESS VIA KEY FOB TO ALL USERS
INDOOR BIKE STORAGE
- REPAIR STANDS WITH TOOLS AND AIR COMPRESSORS
DAILY USE LOCKERS
- CHANGING ROOMS / RESTROOMS
- VENDING MACHINES FOR BASIC RETAIL ACCESSORIES,
SNACKS AND DRINKS



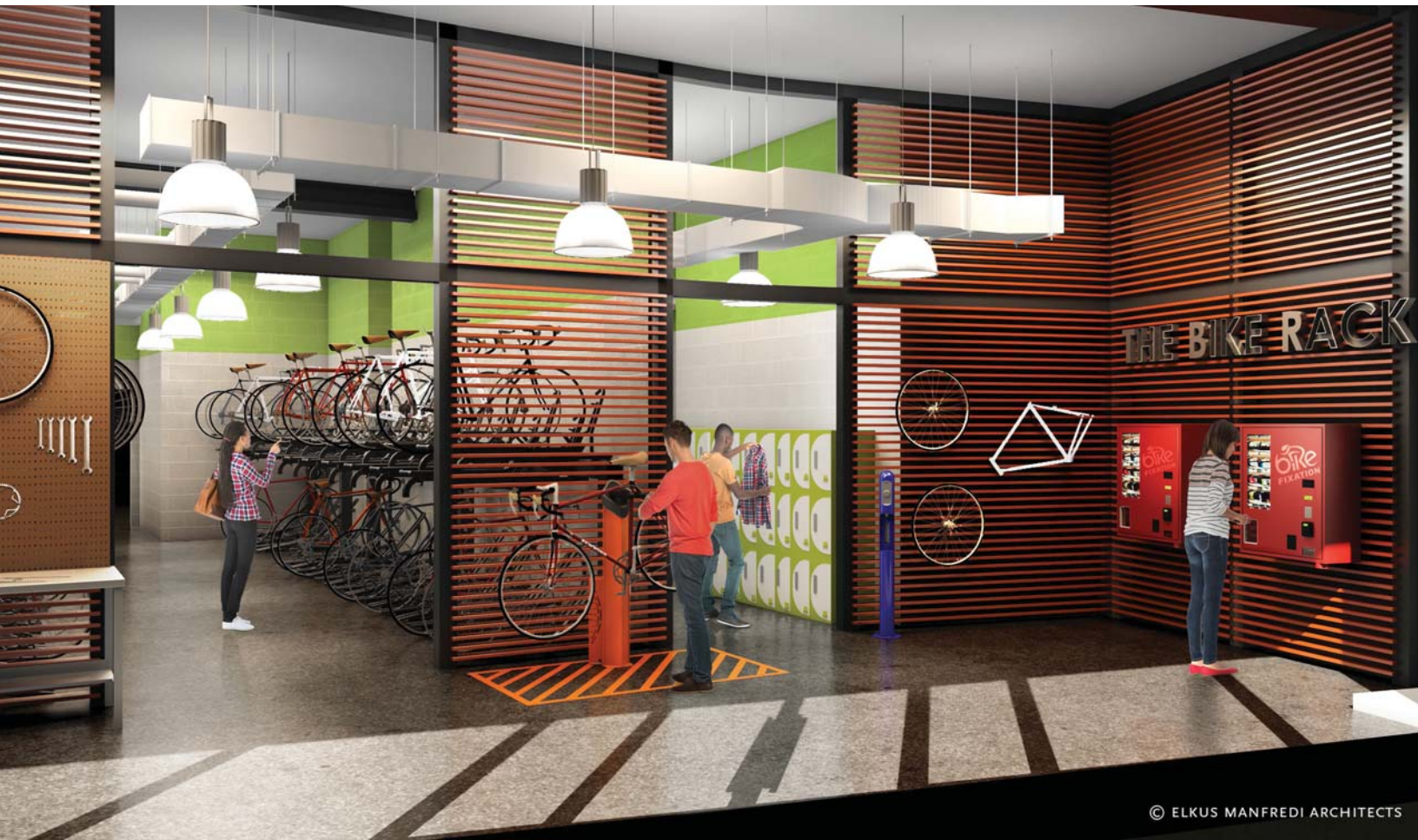
CURRENT







+/- 1,540 SF
 +/- 64 BIKES DOUBLE STACKED



© ELKUS MANFREDI ARCHITECTS





COMPARISONS

PREVIOUS
PLANNING BOARD MARCH 2017



CURRENT



PREVIOUS

PLANNING BOARD MARCH 2017

CURRENT



PREVIOUS
PLANNING BOARD MARCH 2017

WHITE FRIT OPTION

CURRENT



PREVIOUS

PLANNING BOARD MARCH 2017



CURRENT



PREVIOUS
PLANNING BOARD MARCH 2017



CURRENT



PREVIOUS
PLANNING BOARD MARCH 2017



GRAPHIC ART WALL

CURRENT



PREVIOUS
PLANNING BOARD MARCH 2017

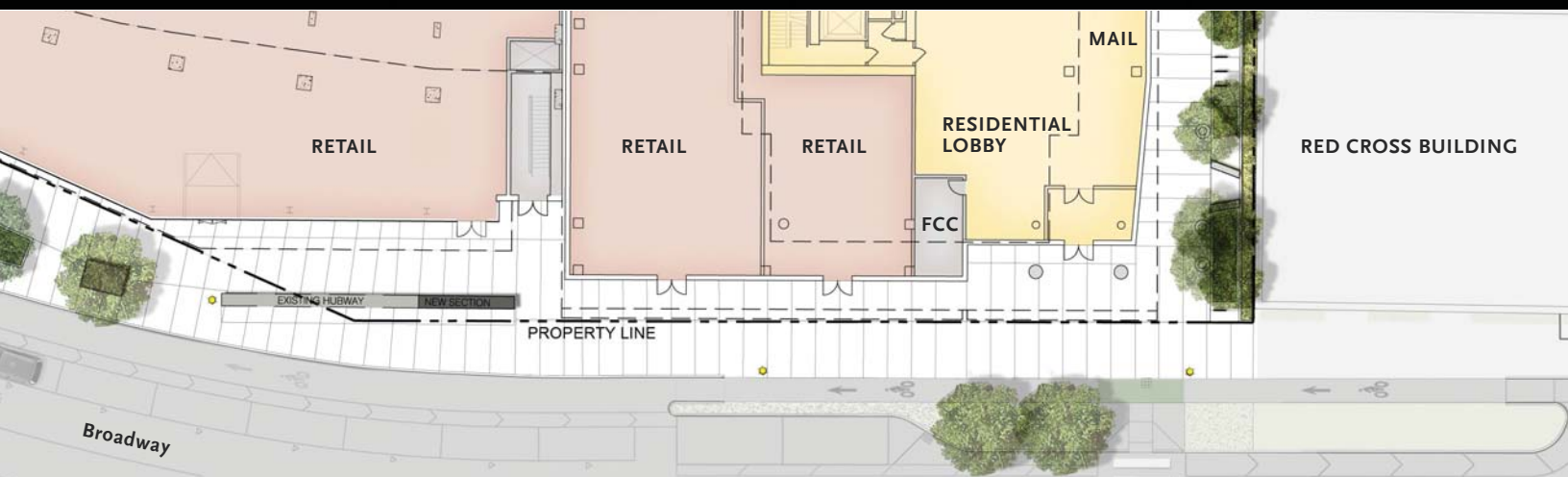


CURRENT



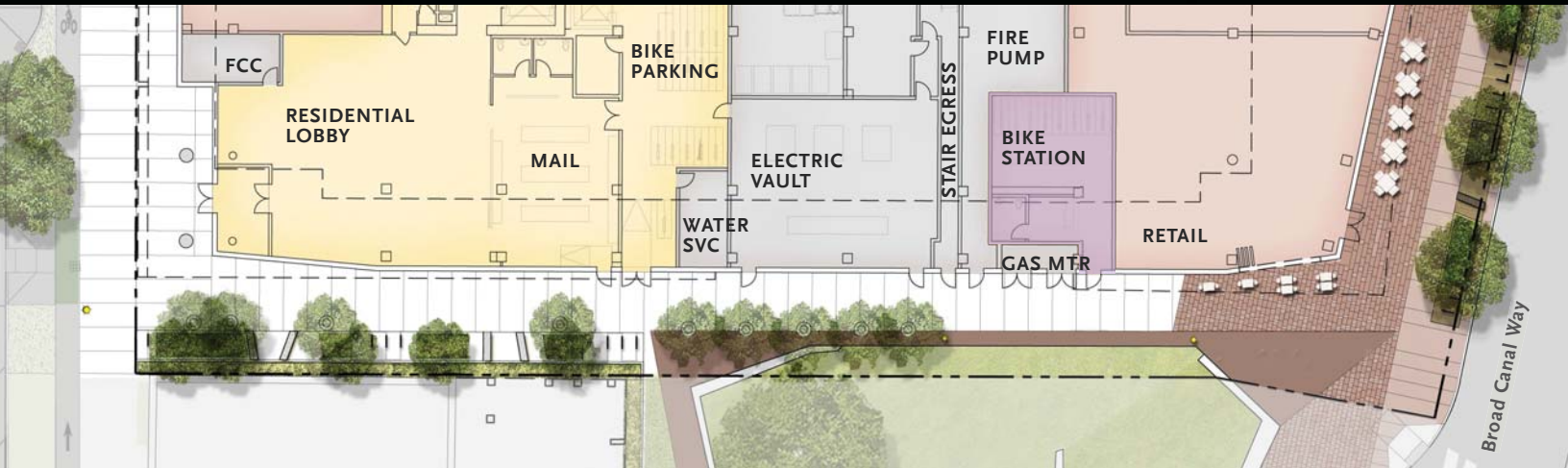
PODIUM FACADE

PREVIOUS
PLANNING BOARD MARCH 2017



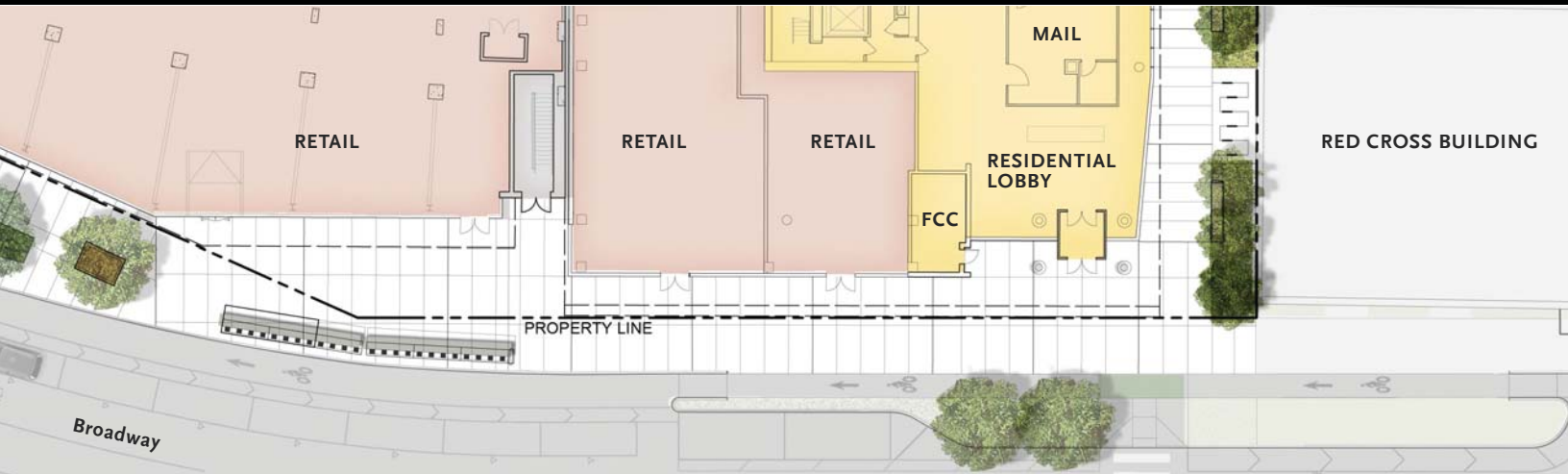


GRAPHIC ART WALL

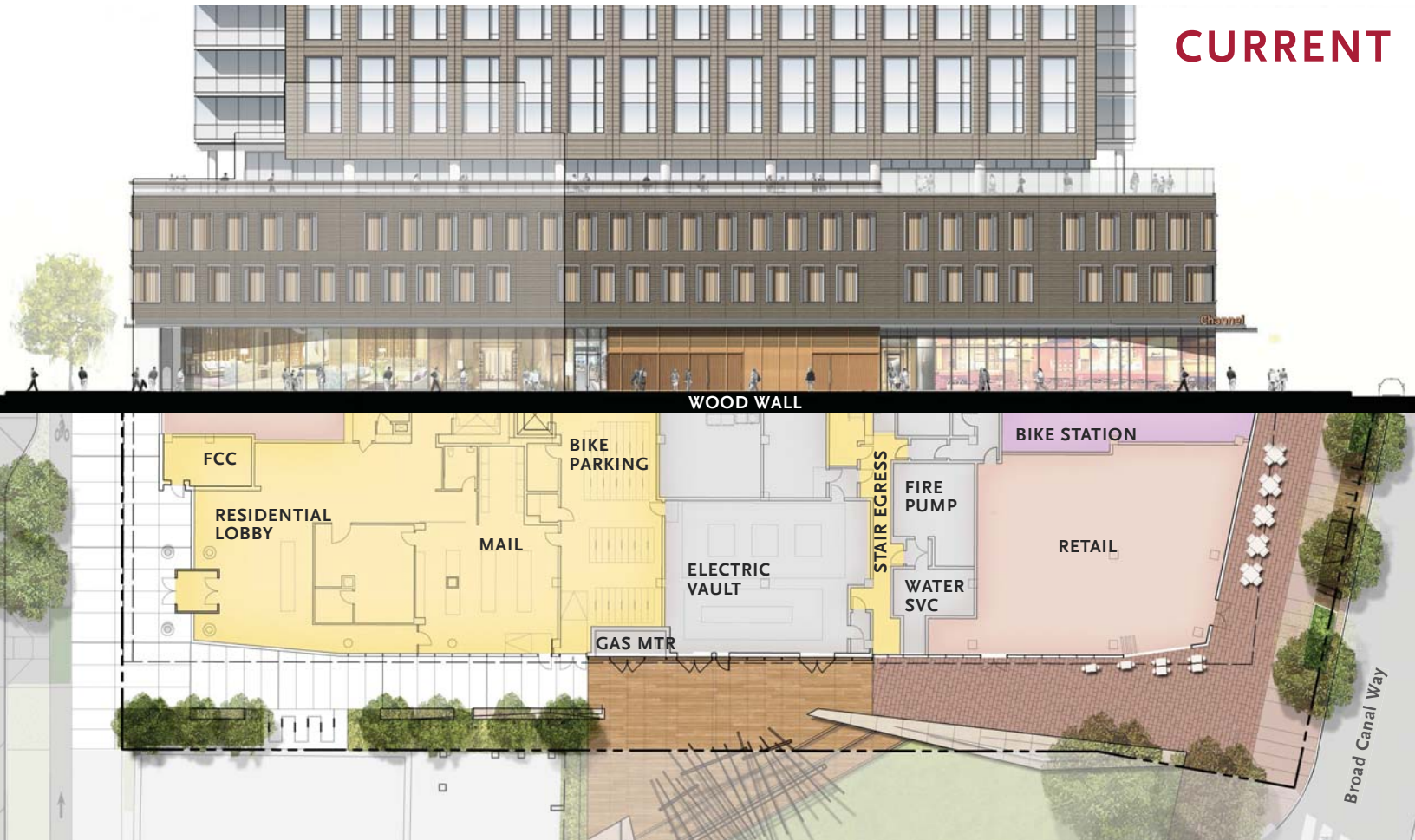




CURRENT



CURRENT



CURRENT



CURRENT





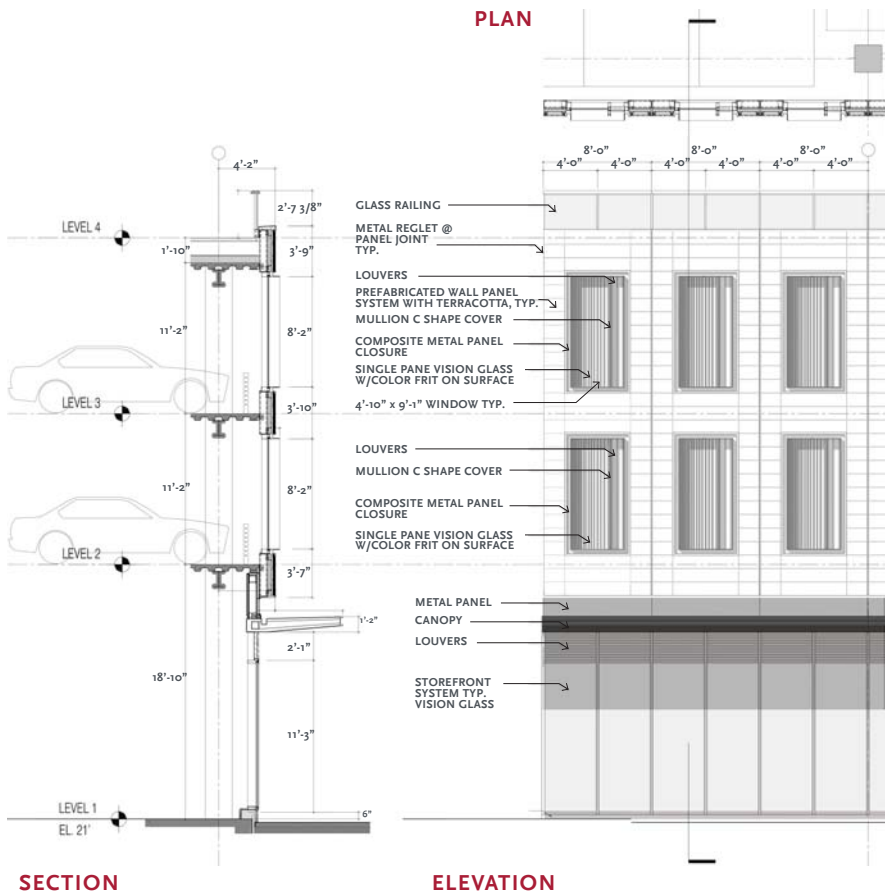
CURRENT





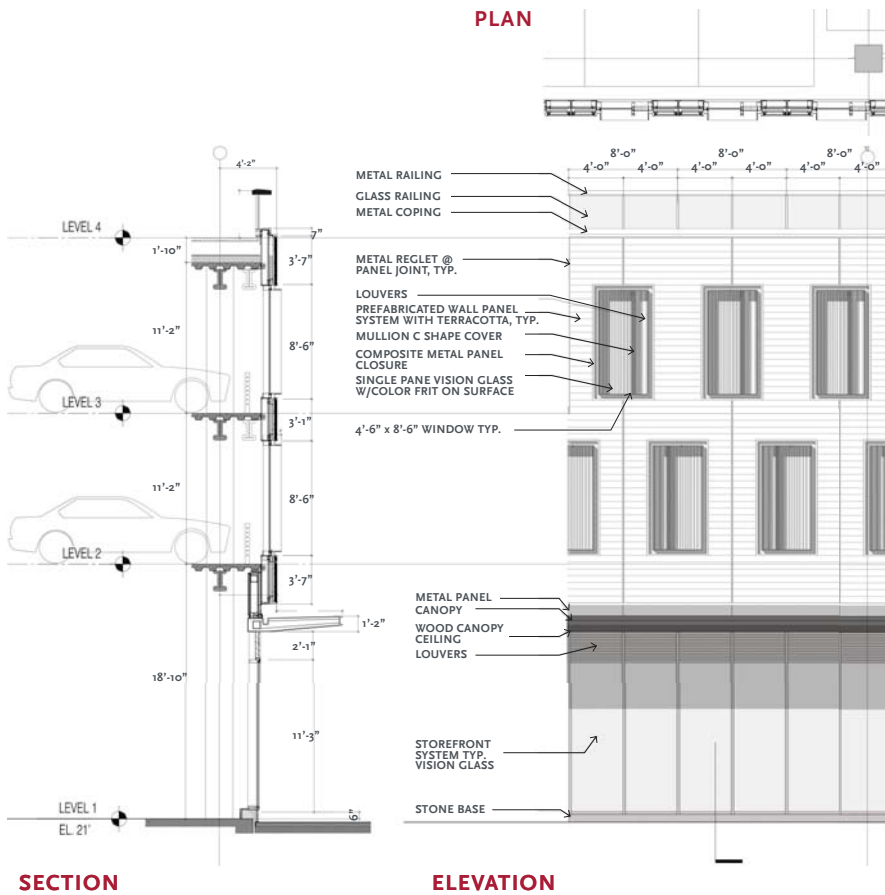
CURRENT





DETAIL VIEW

CURRENT



DETAIL VIEW

PREVIOUS
PLANNING BOARD MARCH 2017



CURRENT





© ELKUS MANFREDI ARCHITECTS

CURRENT



CURRENT

