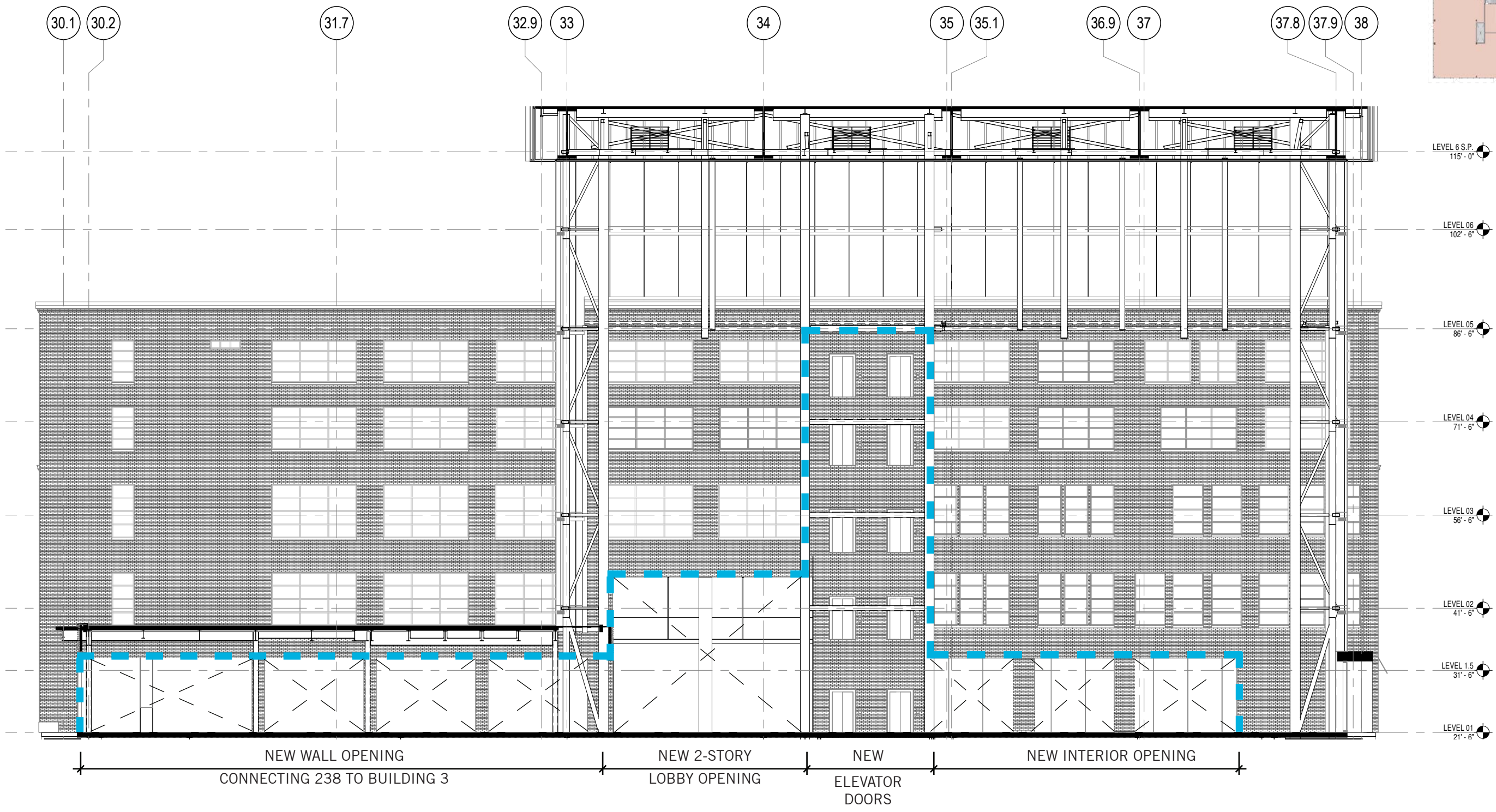


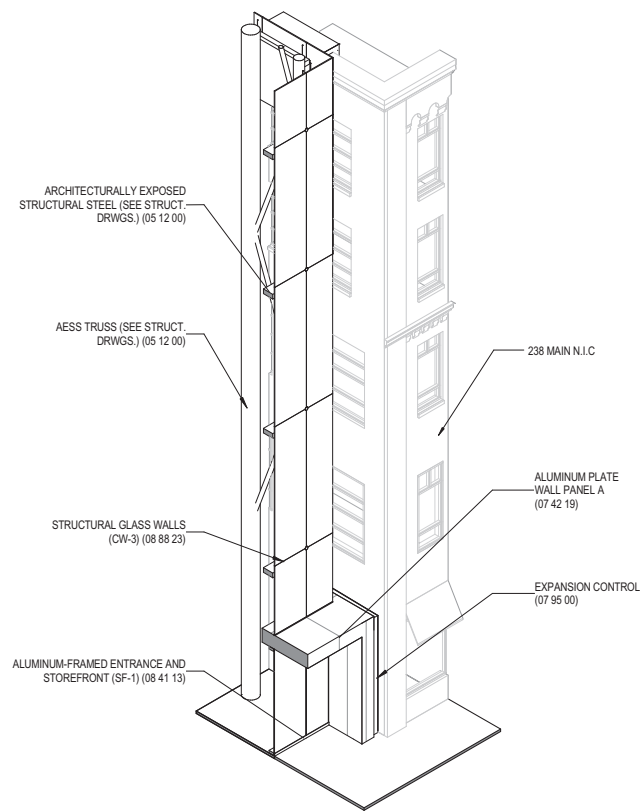


- BRONZE LETTERING
- BLACK METAL PANEL
- WHITE PAINTED TRIM
- GREEN MARBLE SURROUND
- BRONZE -COLORED STOREFRONT
- GRAY GRANITE BASE

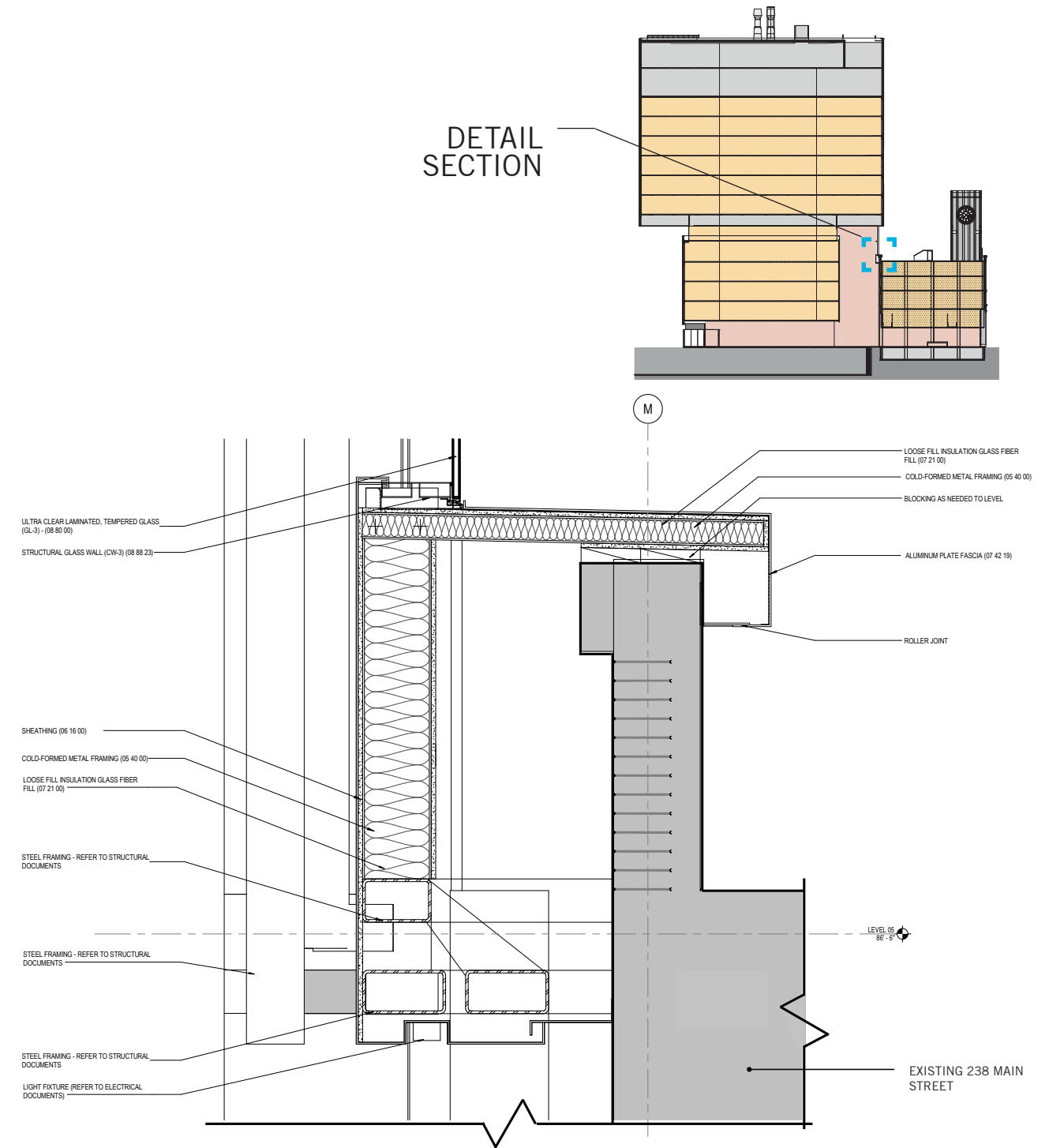
10 1/2" 6'-7" 10 1/2"
DOOR



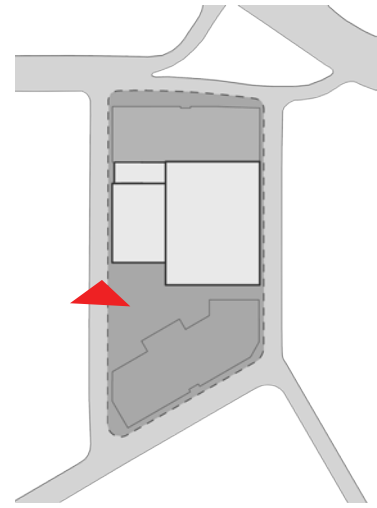


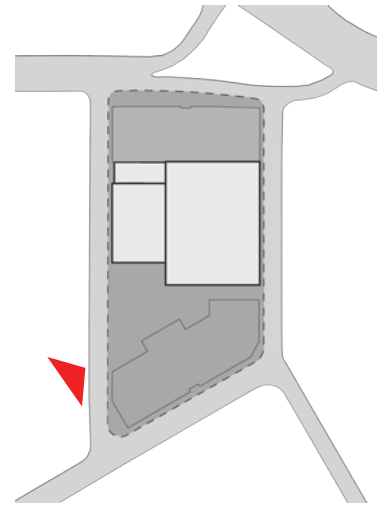


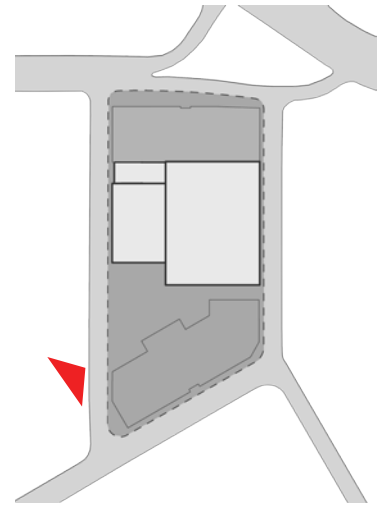
ATRIUM AXONOMETRIC

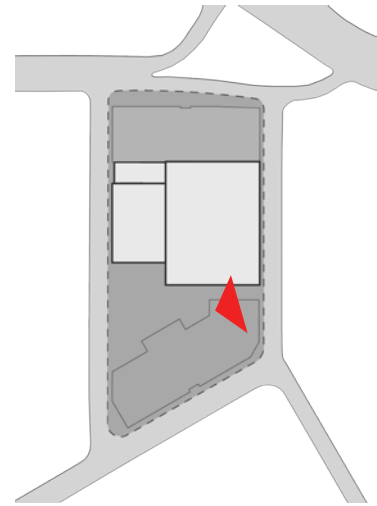


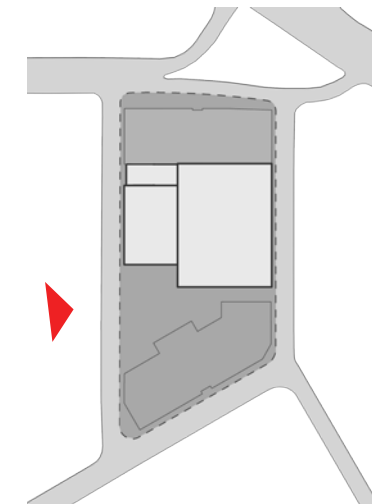
238 PARAPET DETAIL AT NEW ATRIUM

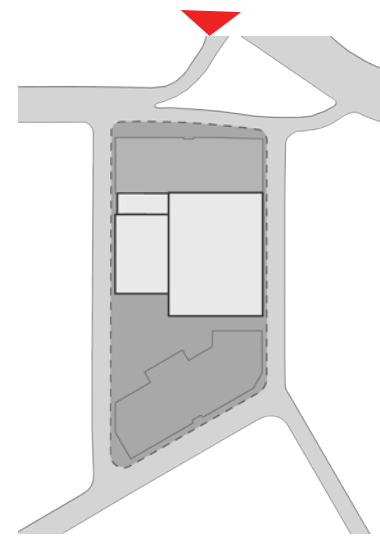














IN-GROUND RECESSED 6" DIAMETER LED UPLIGHT, TYPICAL

EXIT SIGNS

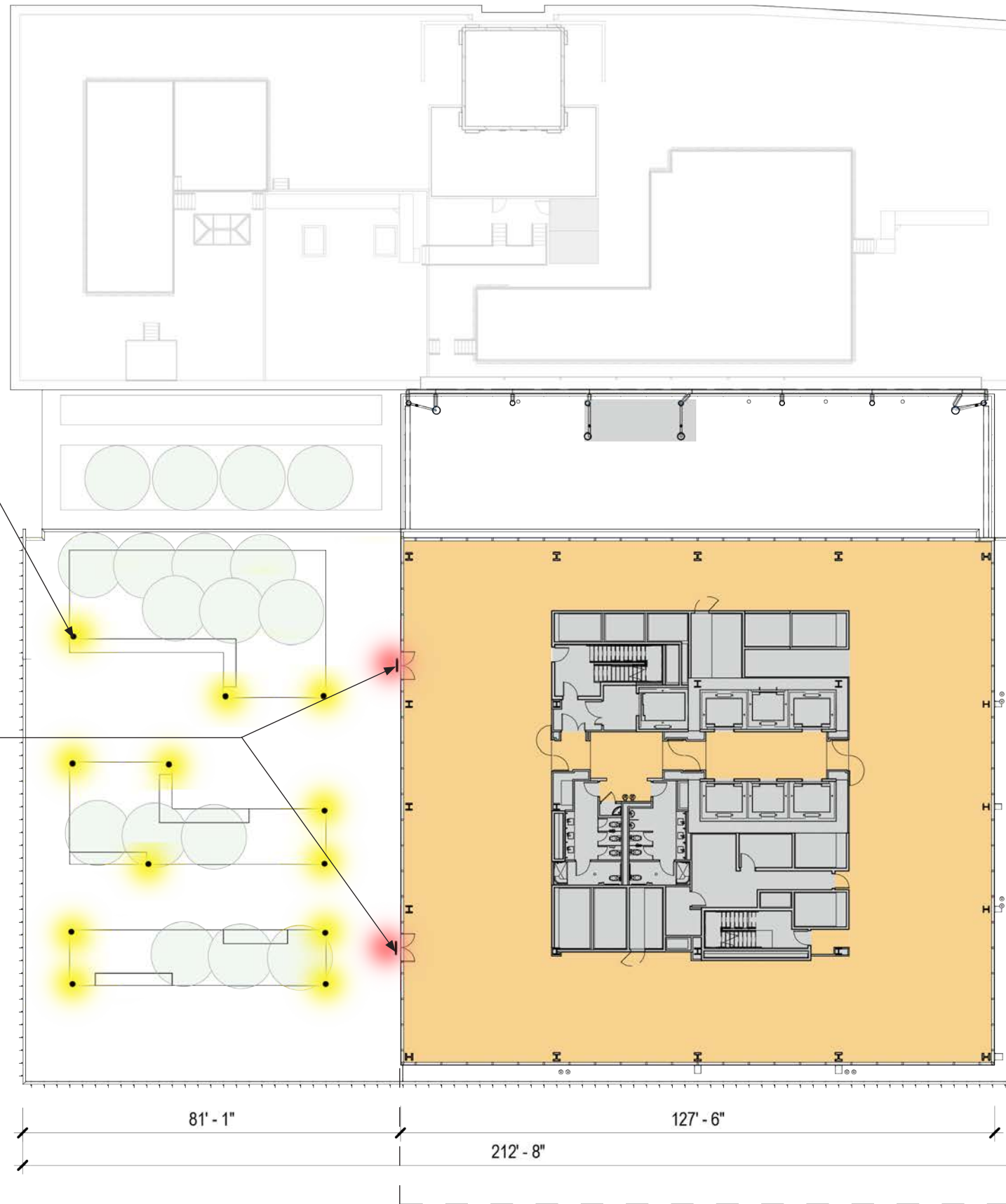
119' - 1"

81' - 1"

212' - 8"

127' - 6"

LIGHTING TO BE INCLUDED AS PART OF A POTENTIAL ART INSTALLATION AT SOFFIT AREA



TOTAL SIGNAGE ALLOWED = 884 sf

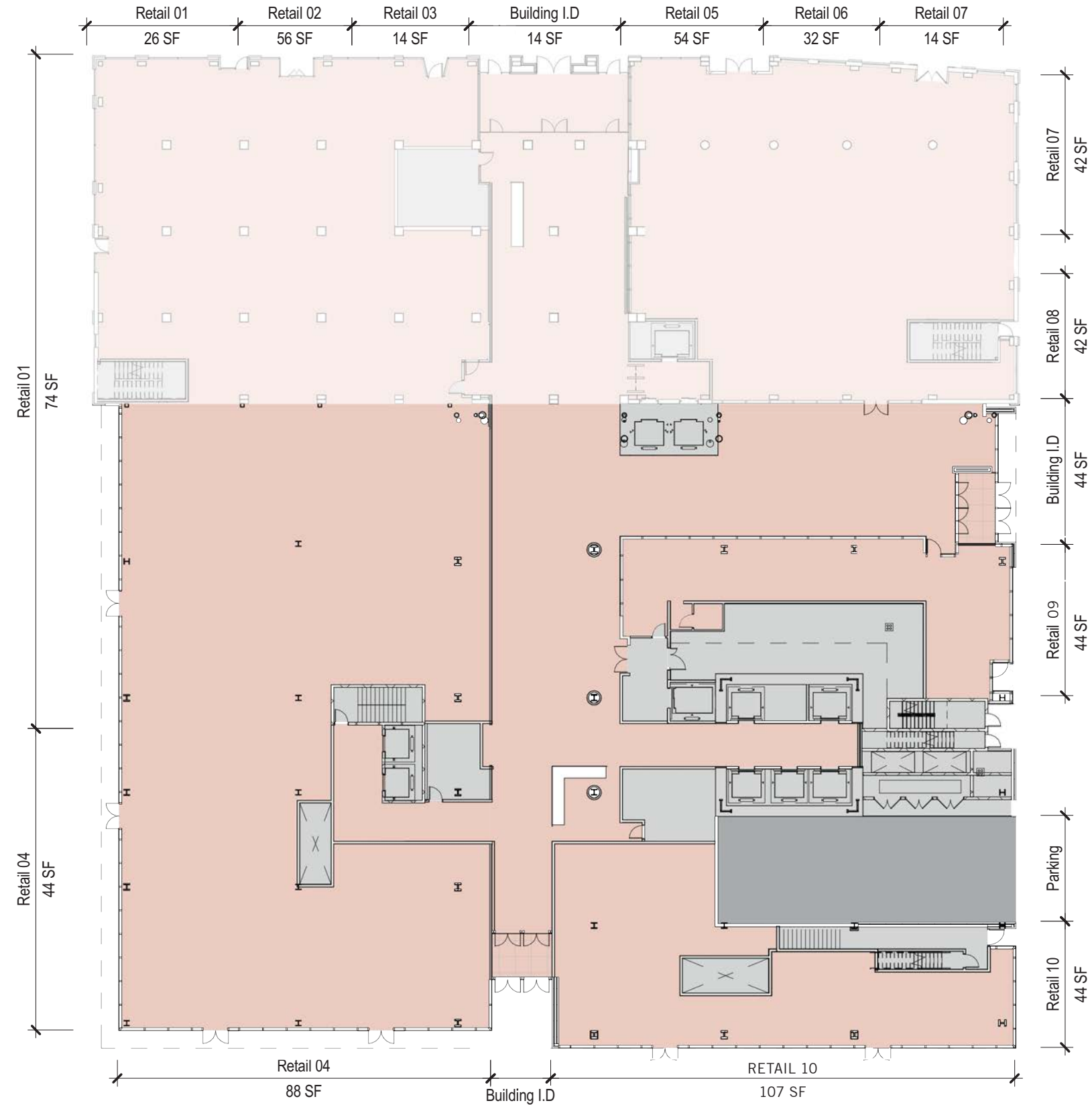
TOTAL SIGNAGE SHOWN ON ELEVATIONS = 758sf

TYPES OF SIGNS:

FREE-STANDING SIGNS = Maximum 2, 30 sf total, 15' high

PROJECTING SIGNS = Maximum area = 13 sf ea, one per ground-floor establishment + 1 for any public building entrance not serving a ground-floor establishment. Height of sign <20' or below sill of second floor windows. Banners would be considered projecting signs, and therefore subject to the above limits in size and quantity.

WALL SIGNS = Maximum area = 60 sf ea, no limit on quantity. Max height = 20' or below sill of second floor windows. May not be located more than 12" from face of building or it is considered a projecting sign.



SIGNAGE

NORTH ELEVATION



SIGNAGE

SOUTH ELEVATION

