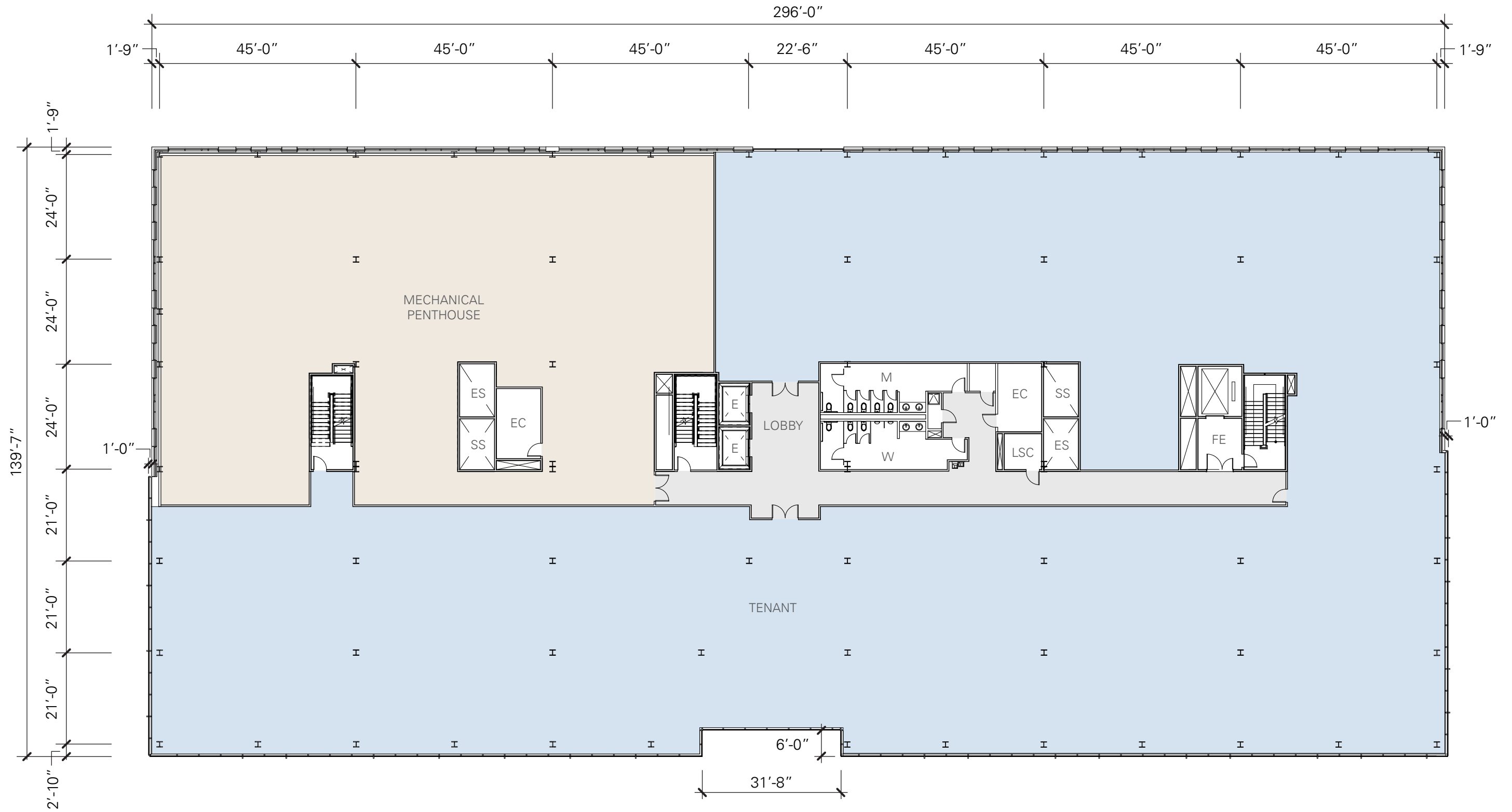
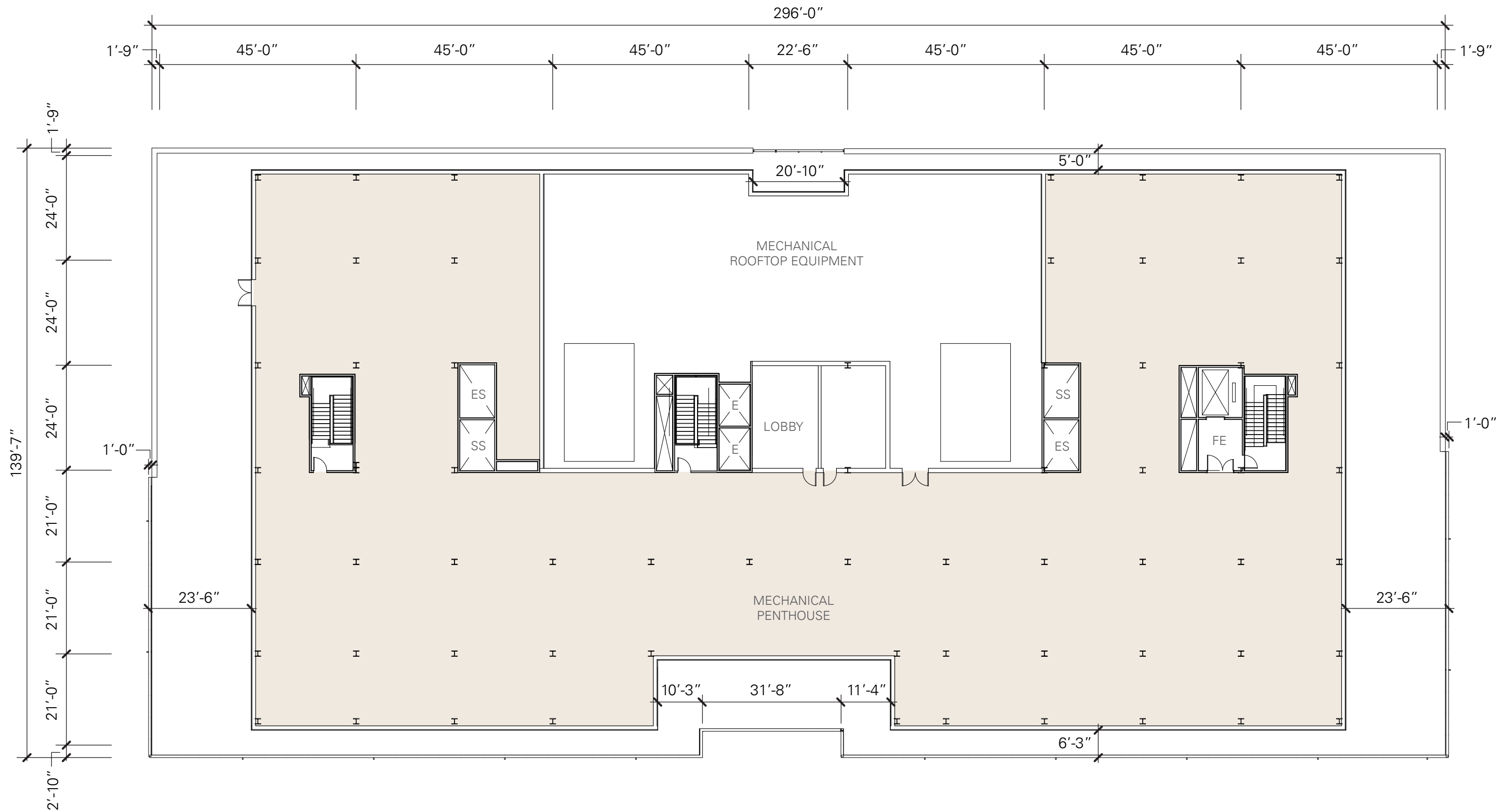


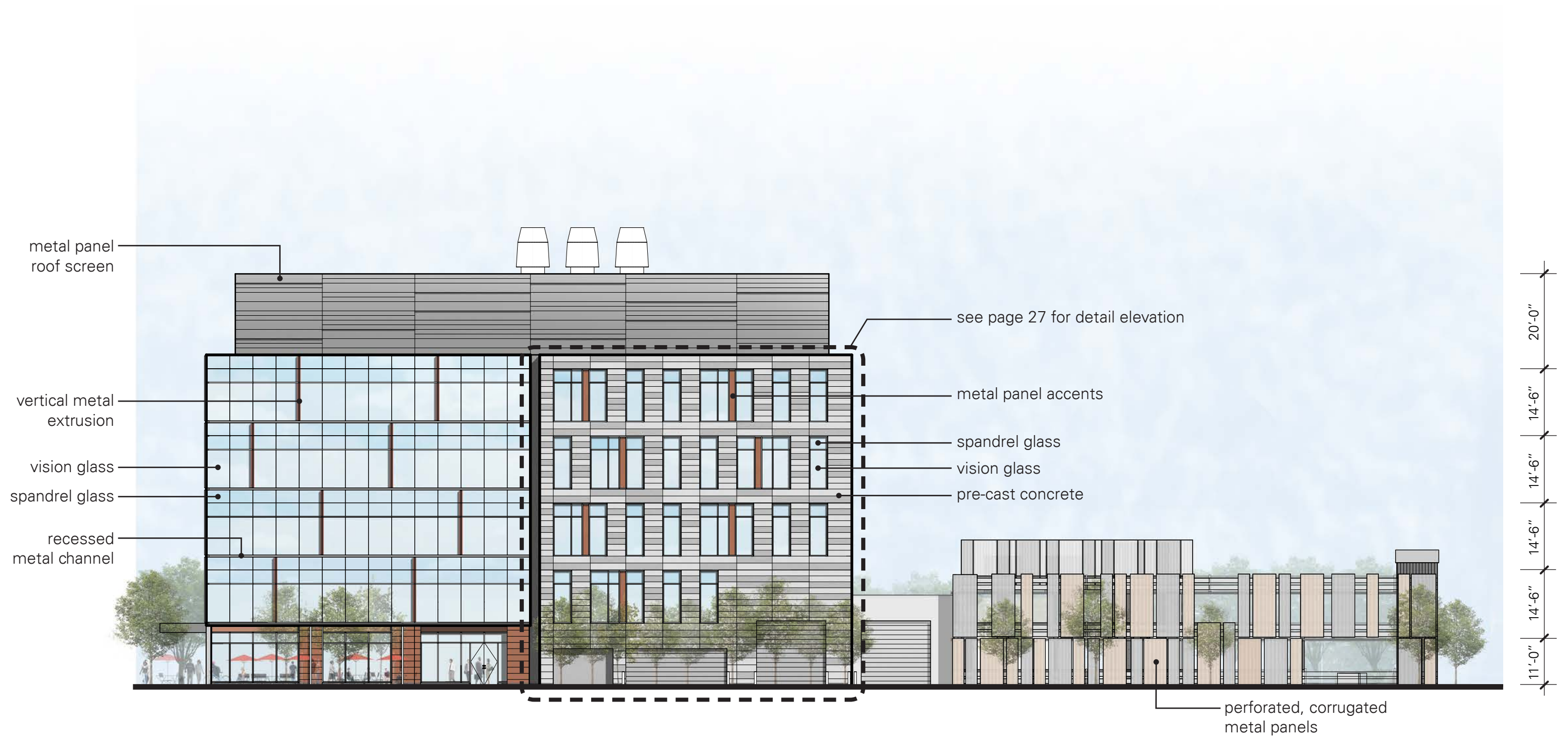
# FLOOR PLAN | LEVEL 5



# FLOOR PLAN | MECHANICAL PENTHOUSE



# EAST ELEVATION



**NOTES:**

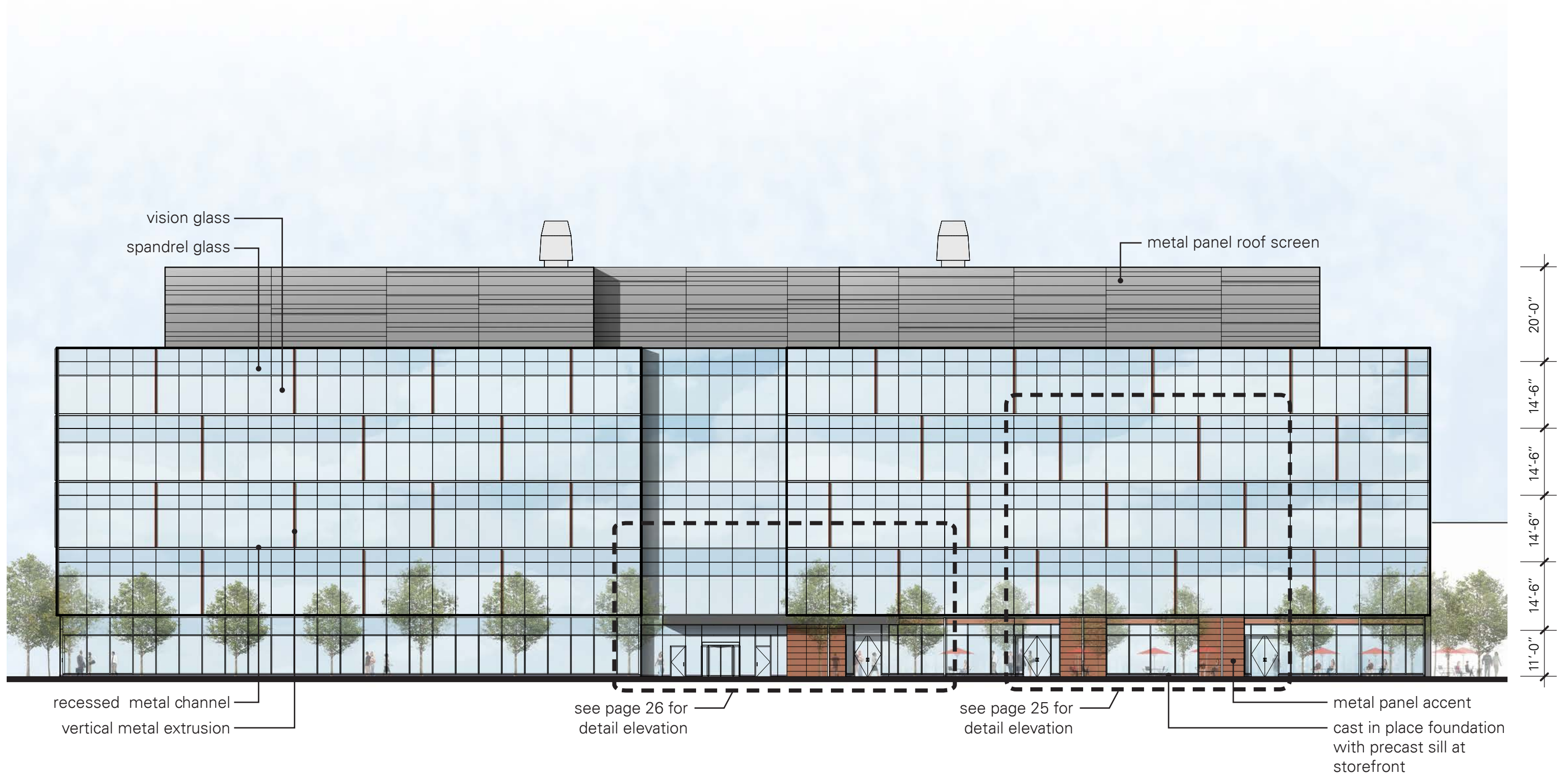
See page 6 for Southeast Day View  
 See page 7 for Southeast Night View  
 See page 29 for Retail Perspective

See page 30 for Entry Perspective  
 See page 36 for Signage Location Plan  
 See page 37 for Sign Family Overview

The Davis Companies



# SOUTH ELEVATION



**NOTES:**

See page 6 for Southeast Day View  
 See page 7 for Southeast Night View  
 See page 29 for Retail Perspective

See page 30 for Entry Perspective  
 See page 36 for Signage Location Plan  
 See page 37 for Sign Family Overview

The Davis Companies



# WEST ELEVATION



## NOTES:

See page 6 for Southeast Day View  
 See page 7 for Southeast Night View  
 See page 29 for Retail Perspective

See page 30 for Entry Perspective  
 See page 36 for Signage Location Plan  
 See page 37 for Sign Family Overview

The Davis Companies



# NORTH ELEVATION



## NOTES:

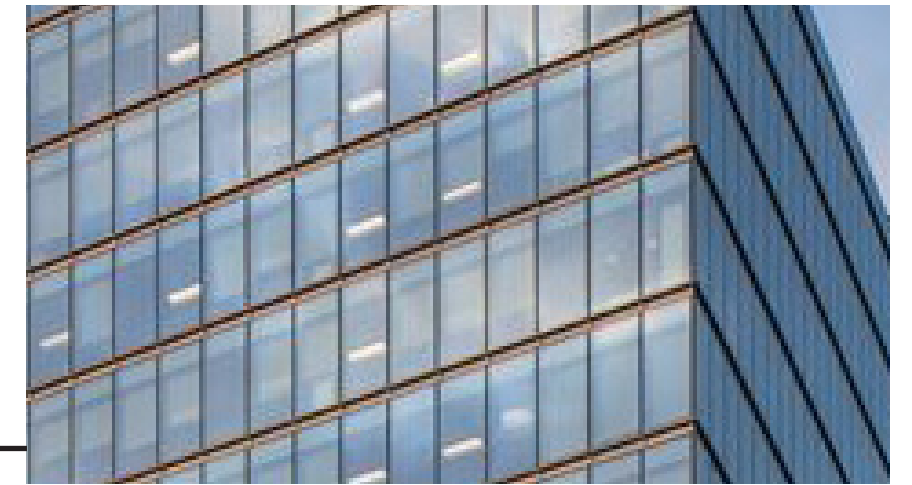
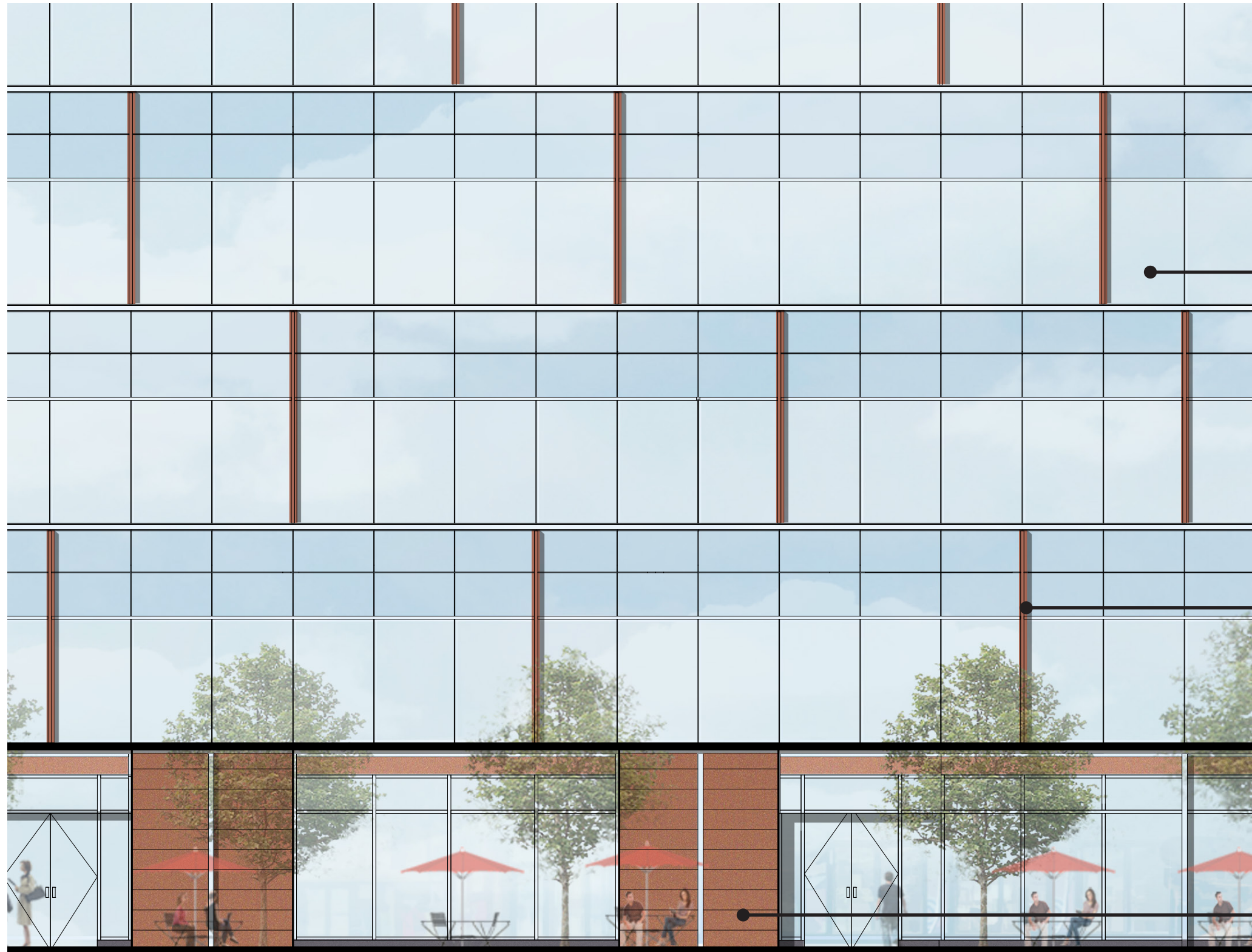
See page 6 for Southeast Day View  
 See page 7 for Southeast Night View  
 See page 29 for Retail Perspective

See page 30 for Entry Perspective  
 See page 36 for Signage Location Plan  
 See page 37 for Sign Family Overview

The Davis Companies



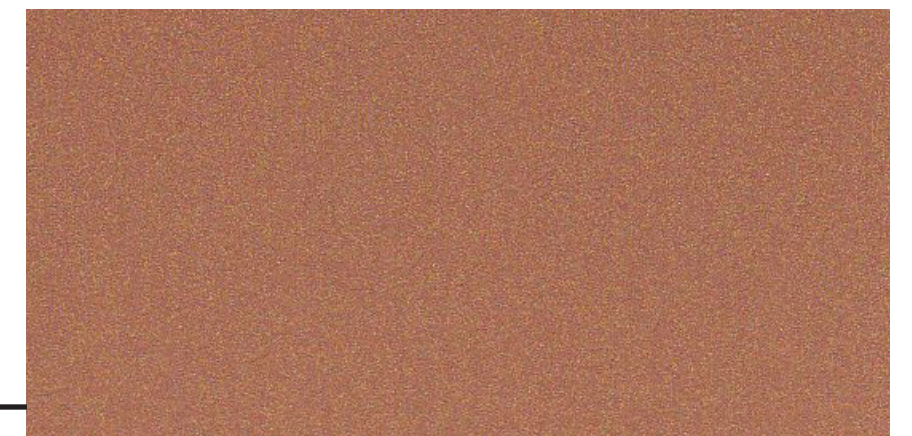
# ENLARGED BAY ELEVATIONS | MATERIALS | SOUTH ELEVATION



GLAZING

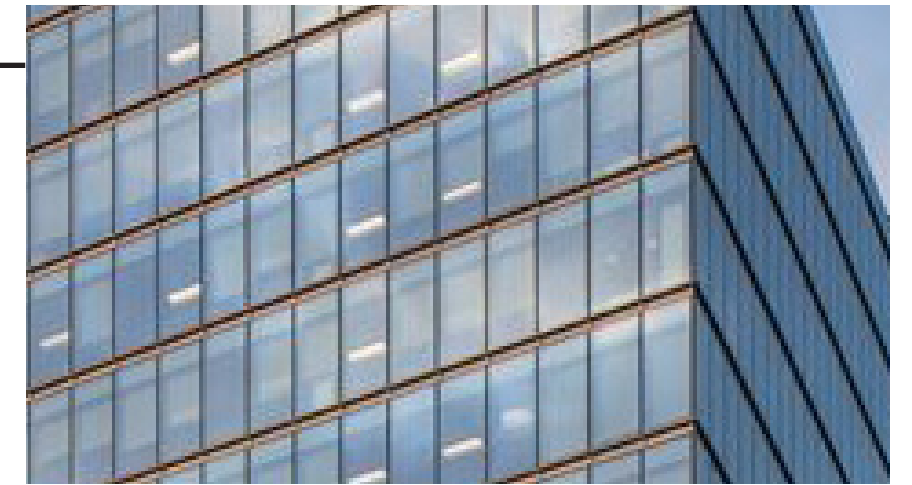


ACCENT FINIS

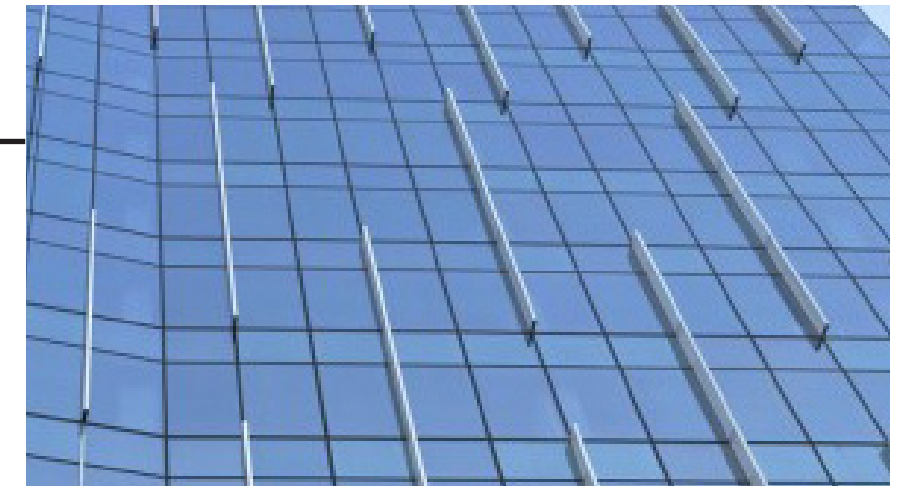


METAL PANEL WITH COPPER FINISH

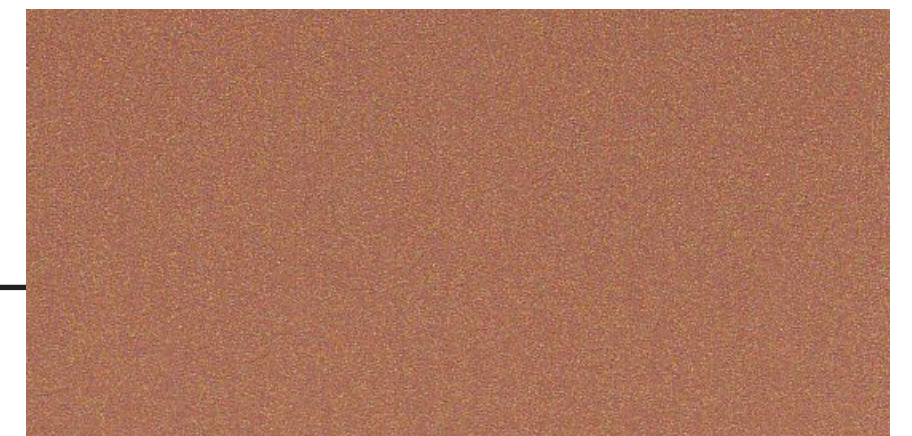
ENLARGED BAY ELEVATIONS | MATERIALS | SOUTH ELEVATION AT ENTRY



GLAZING



ACCENT FINIS



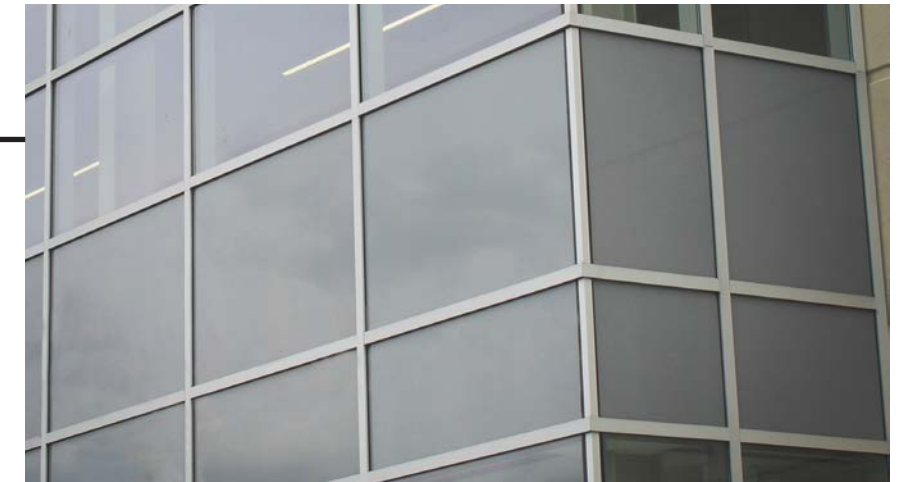
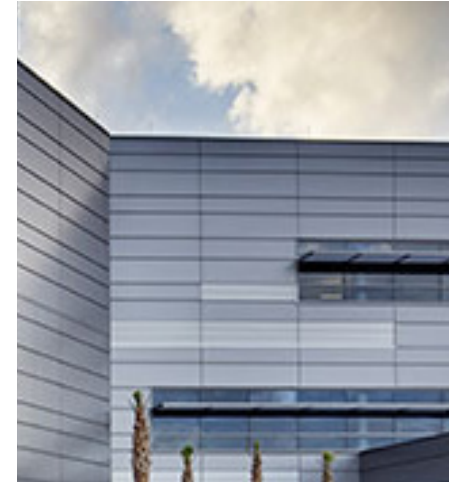
METAL PANEL WITH COPPER FINISH



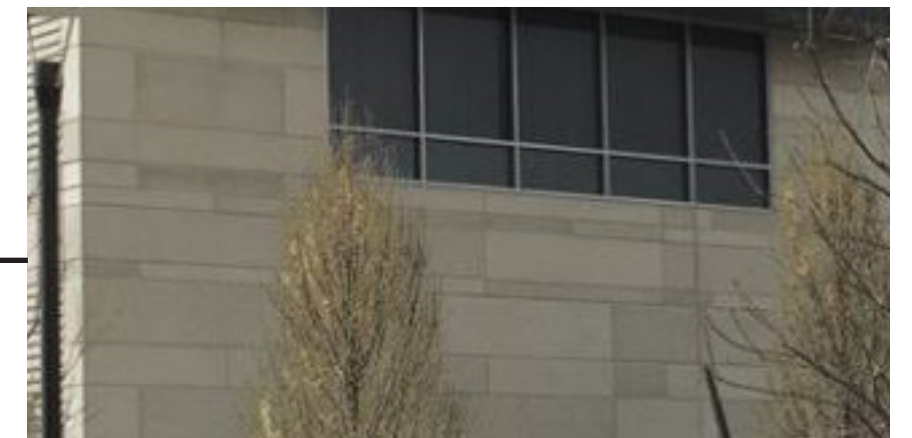
# ENLARGED BAY ELEVATIONS | MATERIALS | EAST ELEVATION



METAL PANEL



SPANDREL GLAZING



PRECAST CONCRETE

# PUBLIC REALM PERSPECTIVE



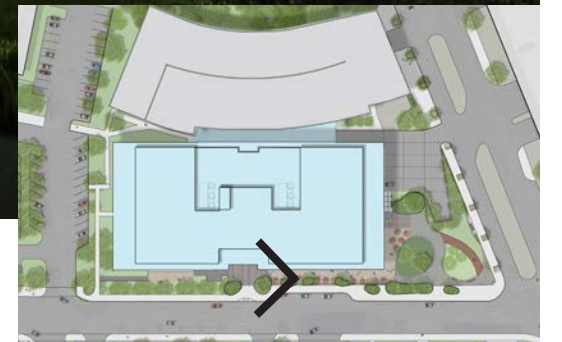
The Davis Companies



# WEST RETAIL PERSPECTIVE



The Davis Companies



# ENTRY PERSPECTIVE



The Davis Companies



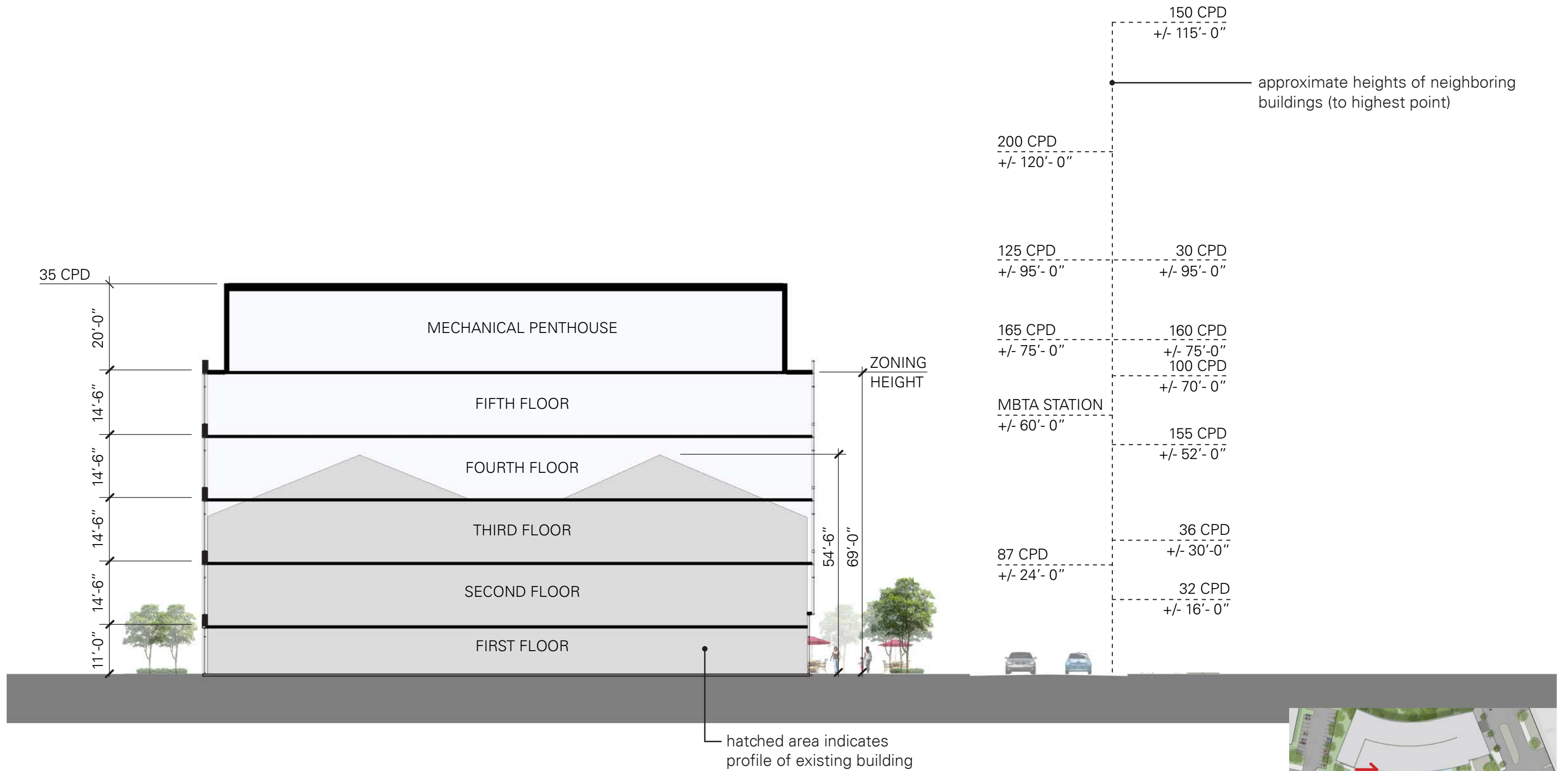
# LOADING DOCK PERSPECTIVE



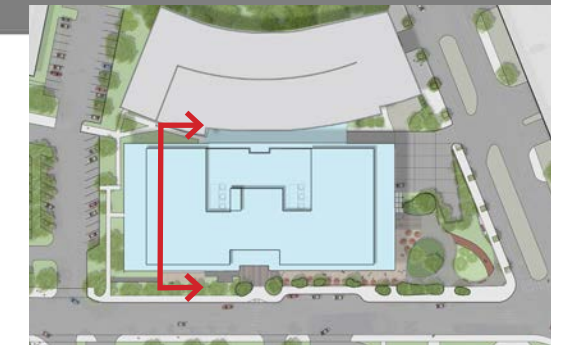
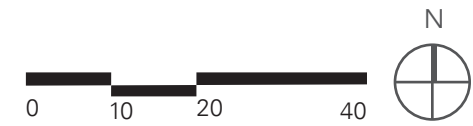
The Davis Companies



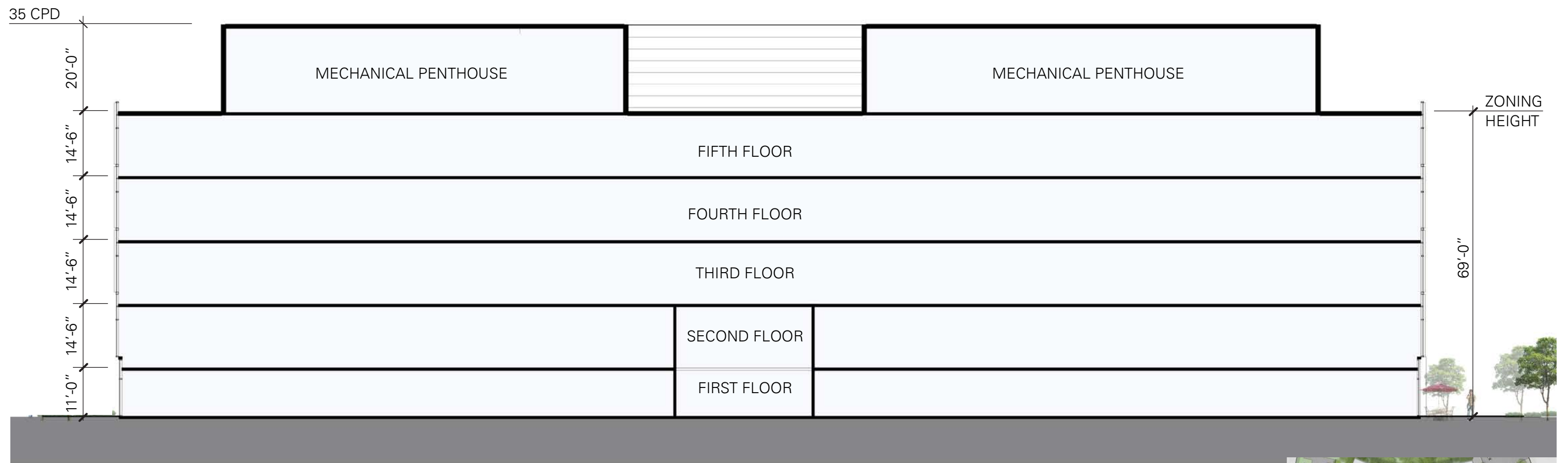
# BUILDING CROSS SECTION



The Davis Companies



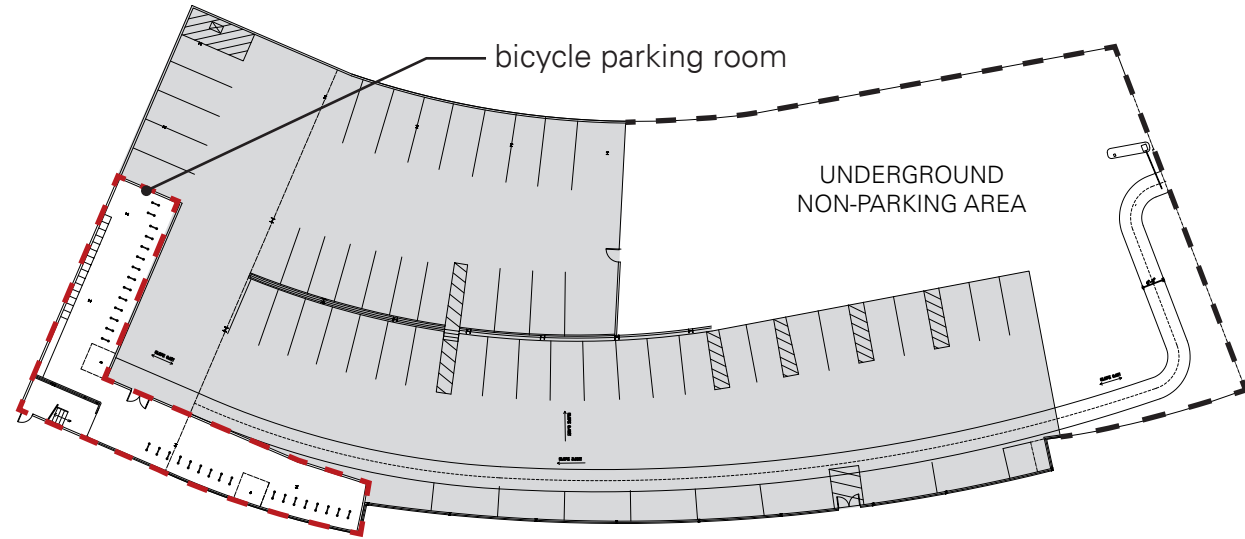
# BUILDING LONGITUDINAL SECTION



The Davis Companies

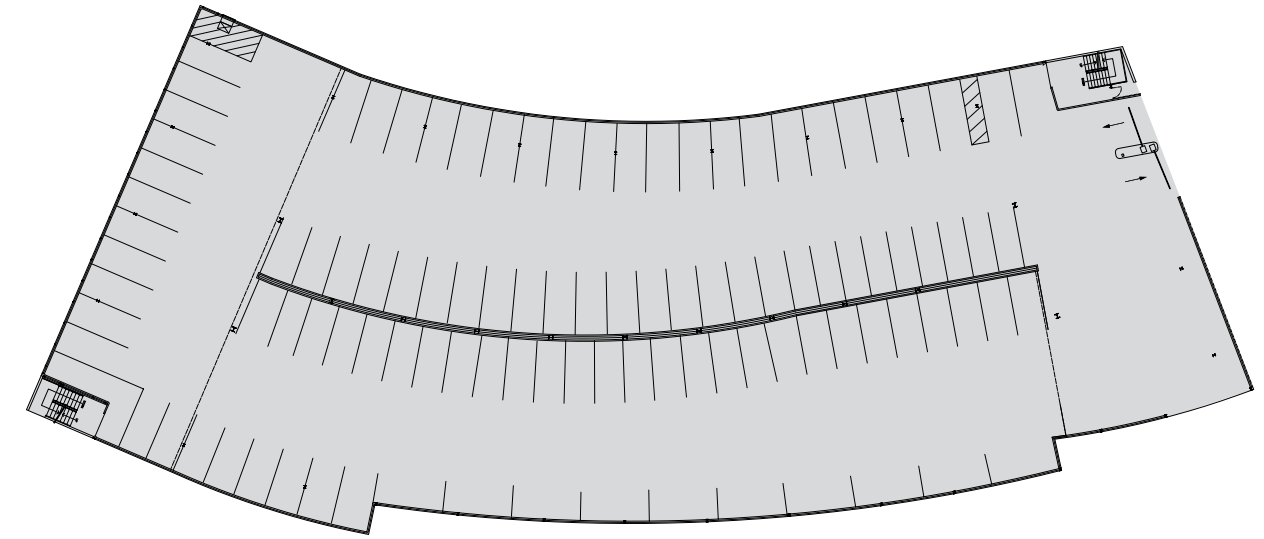


# GARAGE DIAGRAMS



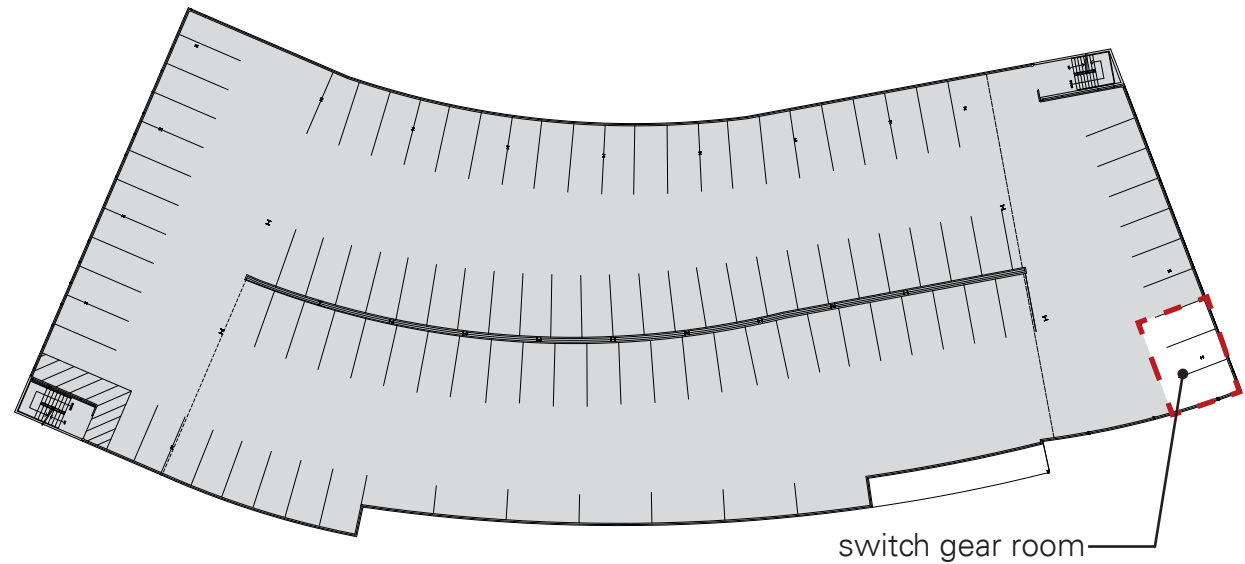
## LOWER FLOOR GARAGE PLAN

GENERAL	49 SPACES
HANDICAP	7 SPACES
<b>TOTAL</b>	<b>56 SPACES</b>
<b>TOTAL REMOVED</b>	<b>11 SPACES</b>



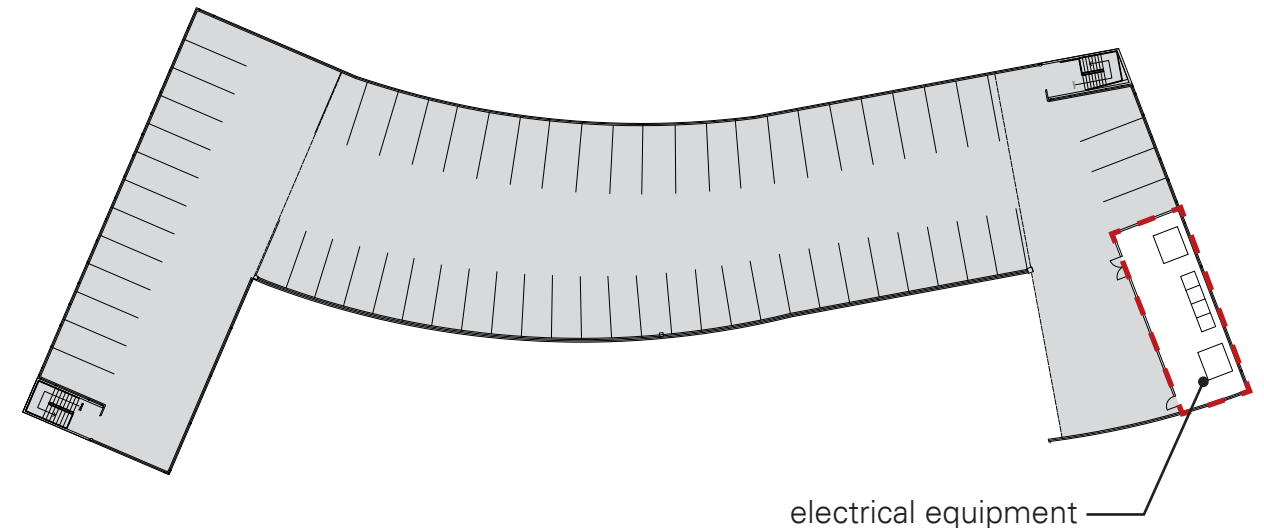
## LOWER FLOOR GARAGE PLAN

GENERAL	101 SPACES
HANDICAP	2 SPACES
<b>TOTAL</b>	<b>103 SPACES</b>



## SECOND FLOOR GARAGE PLAN

GENERAL	106 SPACES
<b>TOTAL</b>	<b>106 SPACES</b>
<b>TOTAL REMOVED</b>	<b>3 SPACES</b>



## THIRD FLOOR GARAGE PLAN

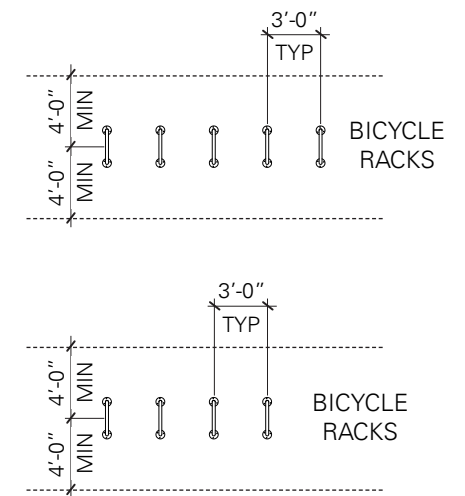
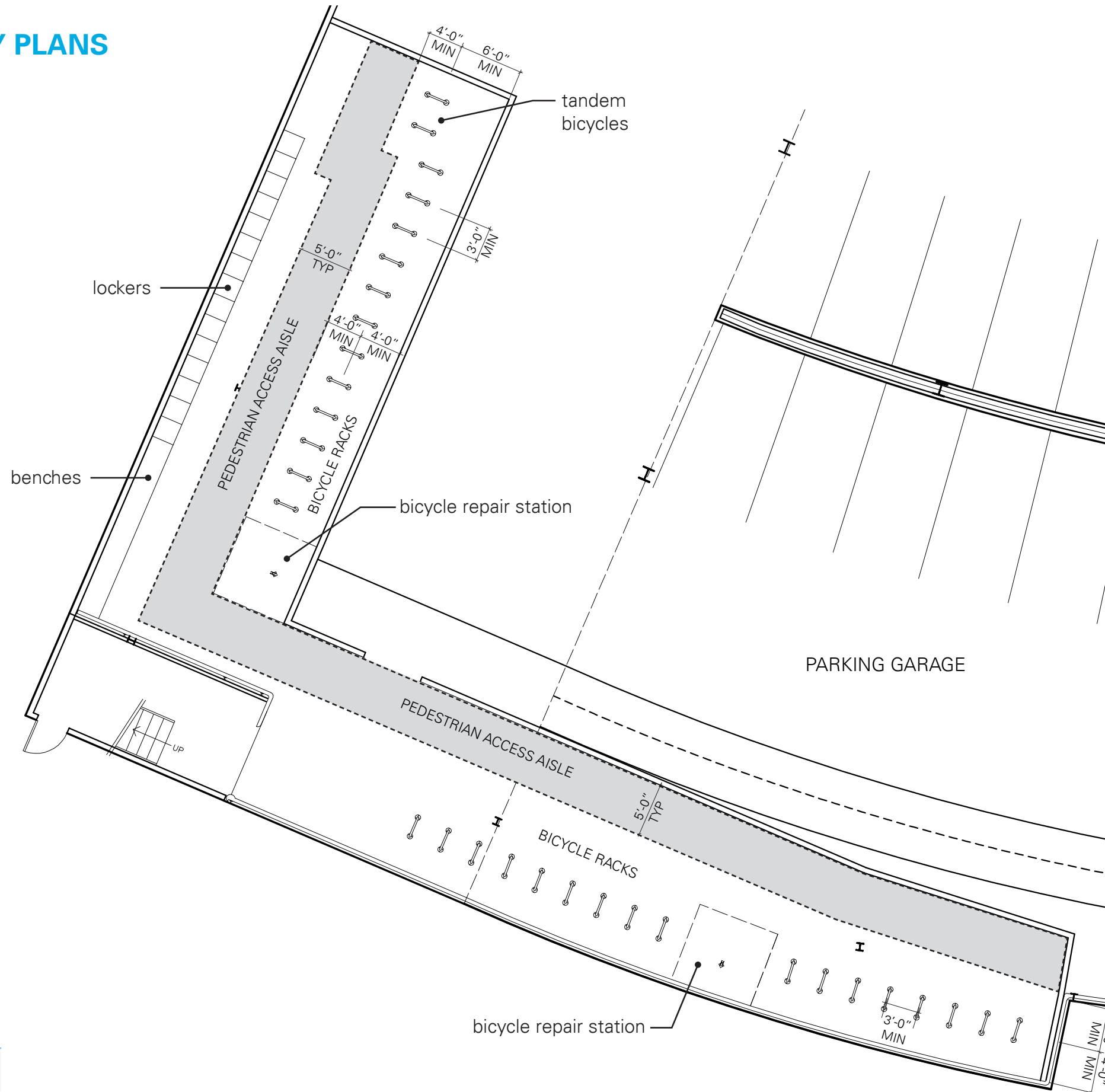
GENERAL	64 SPACES
<b>TOTAL</b>	<b>64 SPACES</b>
<b>TOTAL REMOVED</b>	<b>6 SPACES</b>

## TOTAL PARKING

GENERAL	320 SPACES
HANDICAP	9 SPACES
SITE (H/C/VAN)	2 SPACES
<b>TOTAL</b>	<b>331 SPACES</b>
<b>TOTAL REMOVED</b>	<b>20 SPACES</b>



# BICYCLE FACILITY PLANS



## TYPICAL EXTERIOR BICYCLE PARKING WITH RACKS ALIGNED BY SIDE

Bicycle racks will comply with Cambridge Zoning Ordinance Article 6.100

# SIGN LOCATION PLAN

## SIGNAGE KEY

- FREESTANDING MONUMENT
- FREESTANDING DIRECTIONAL SIGN
- PROJECTING RETAIL SIGN
- PROJECTING ADDRESS SIGN
- WALL SIGN BUILDING ID
- WALL SIGN RETAIL ID

