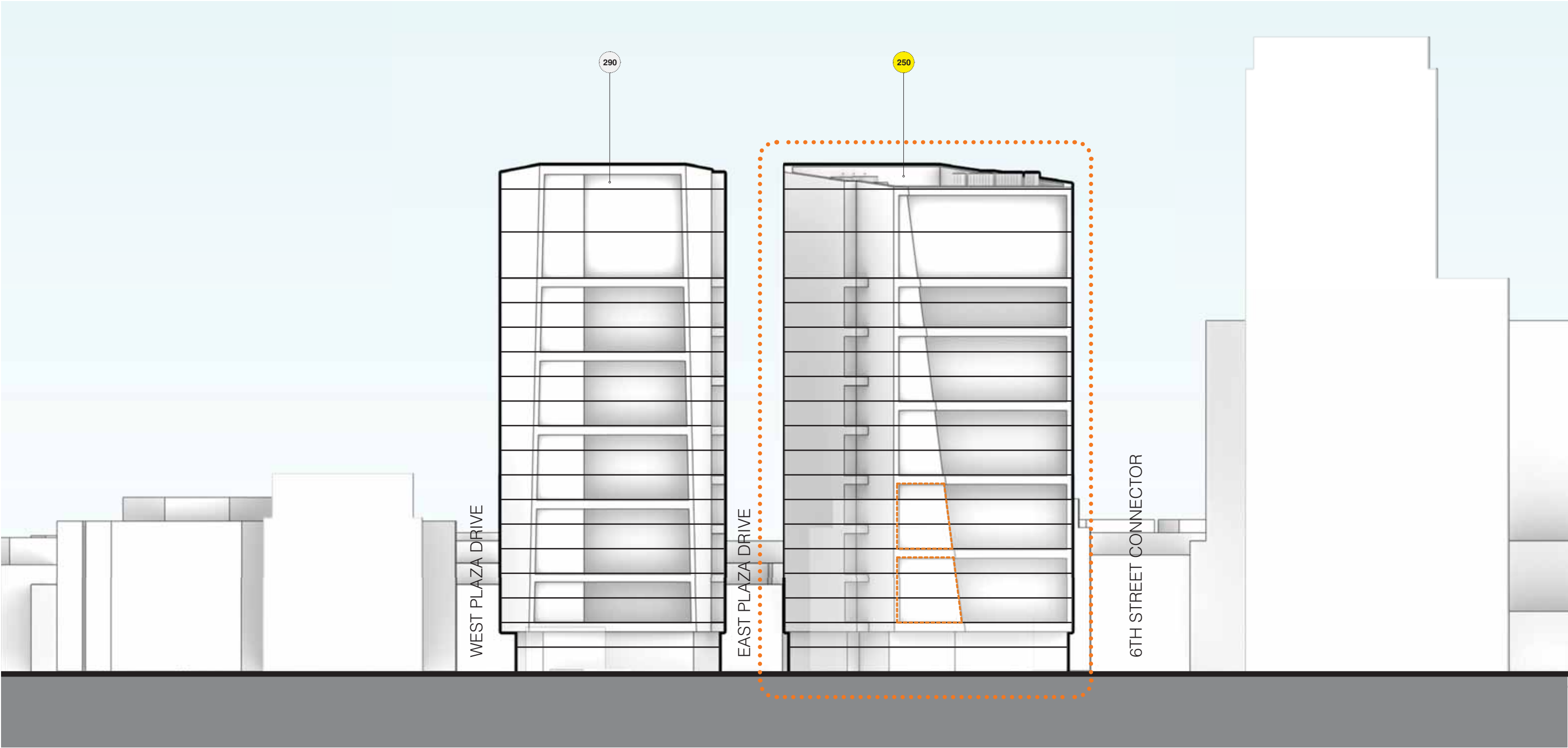
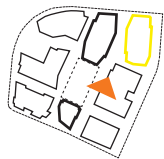


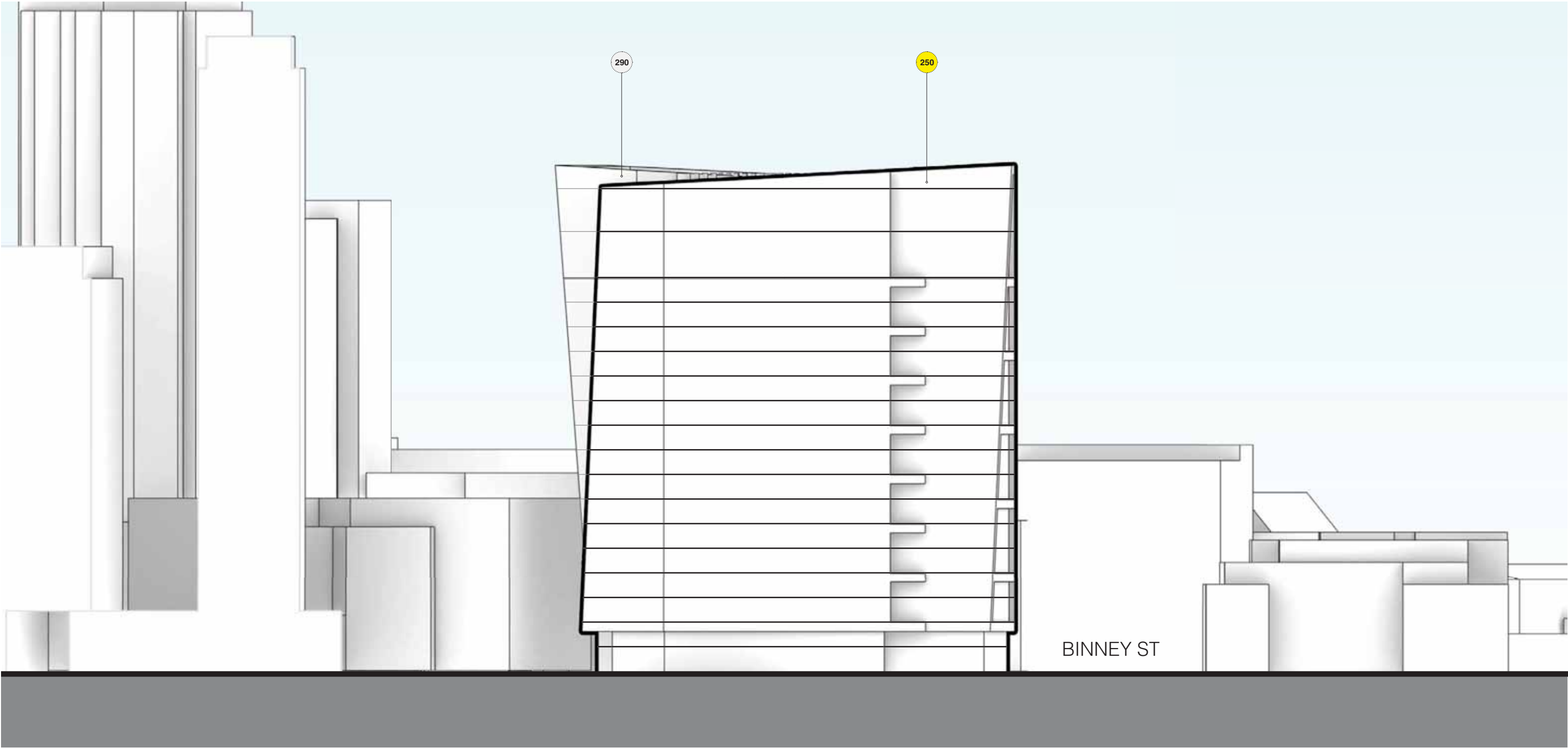
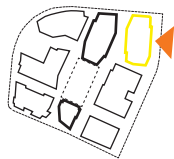
1.3.4 SITE ELEVATIONS

SOUTH

..... Potential Connector Locations (Final Configuration TBD)



1.3.4 SITE ELEVATIONS
EAST

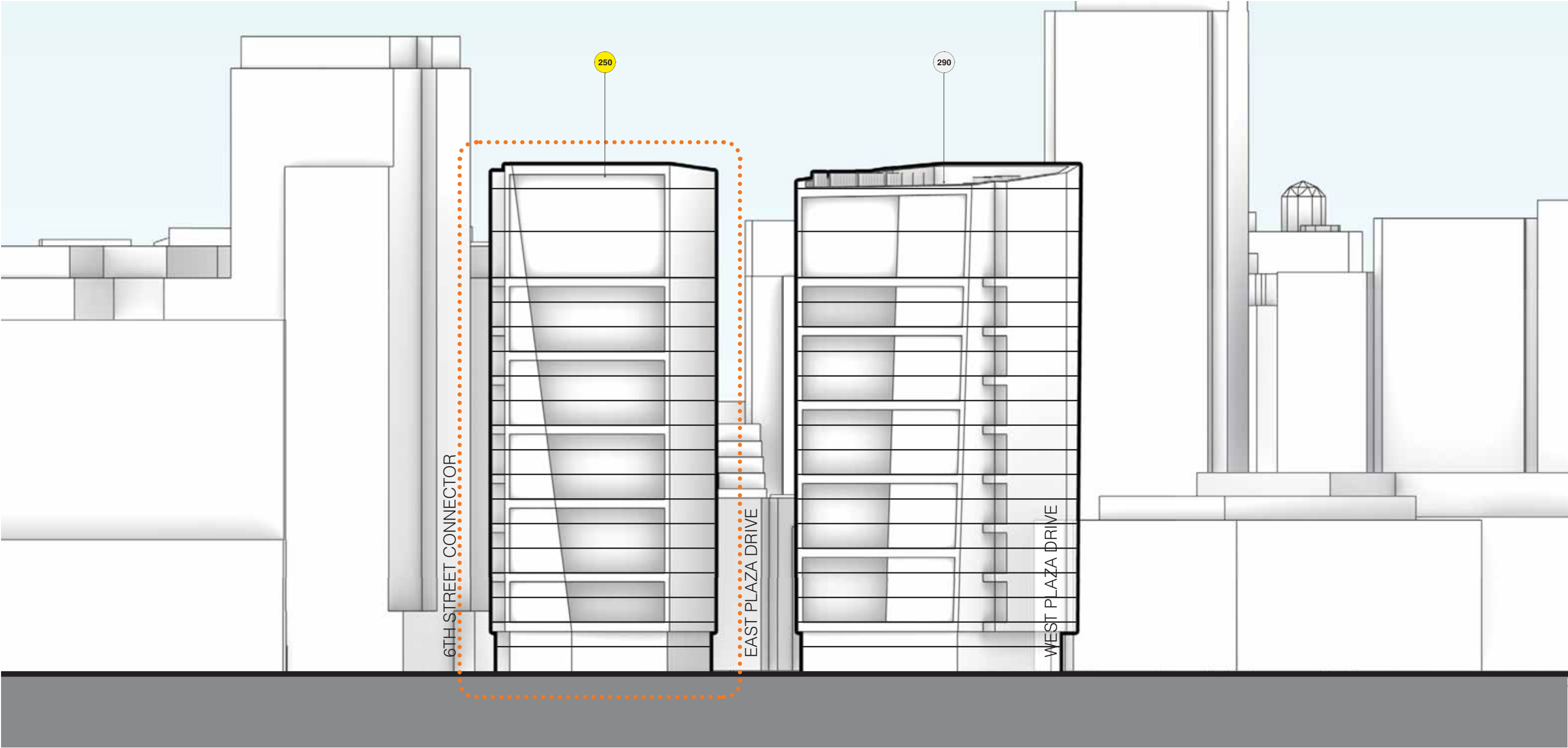


0' 15' 30' 60'

1.3.4 SITE ELEVATIONS

NORTH

..... Potential Connector Locations (Final Configuration TBD)

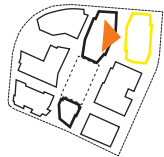


0' 15' 30' 60'

1.3.4 SITE ELEVATIONS

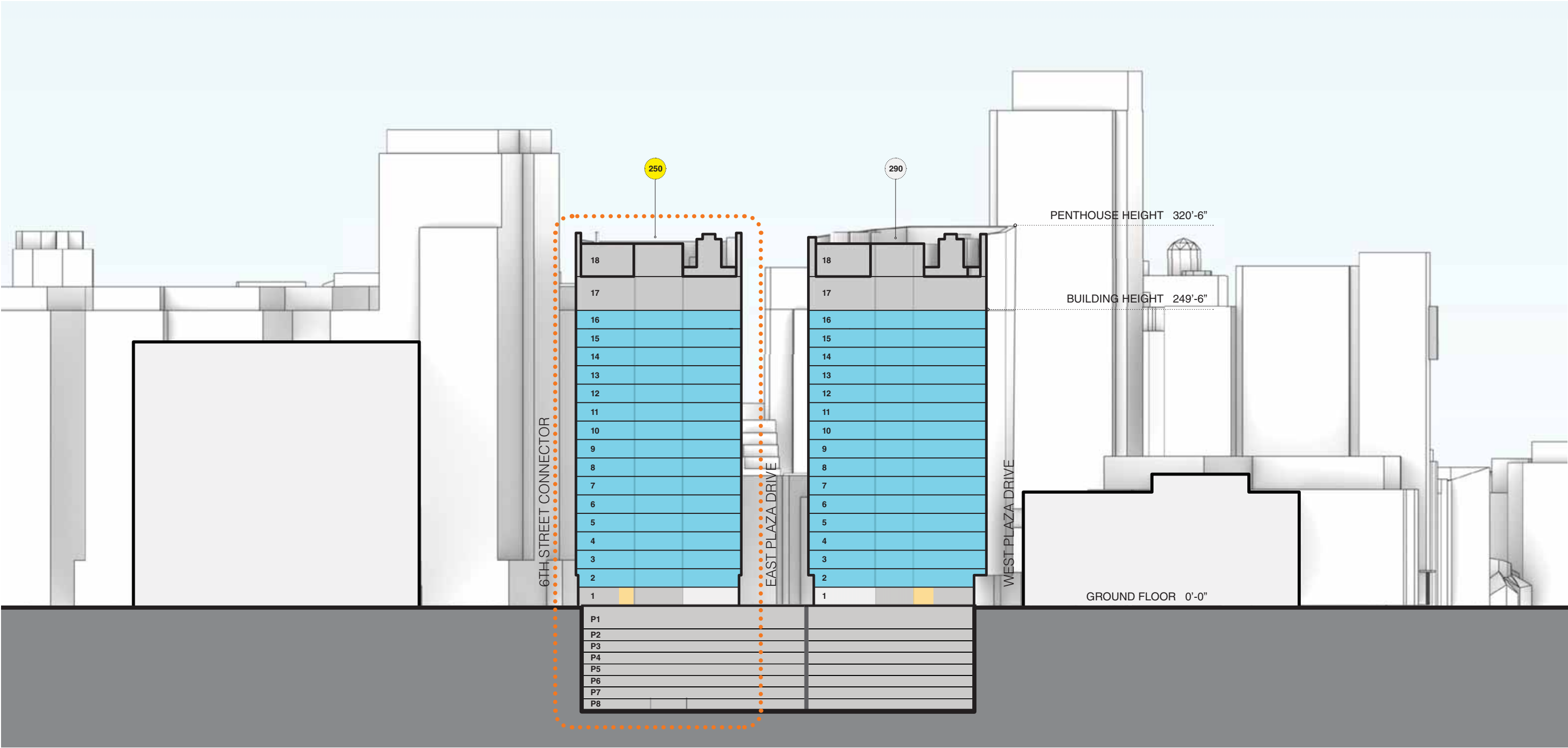
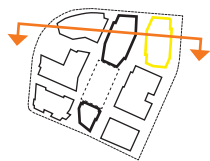
WEST

..... Potential Connector Locations (Final Configuration TBD)



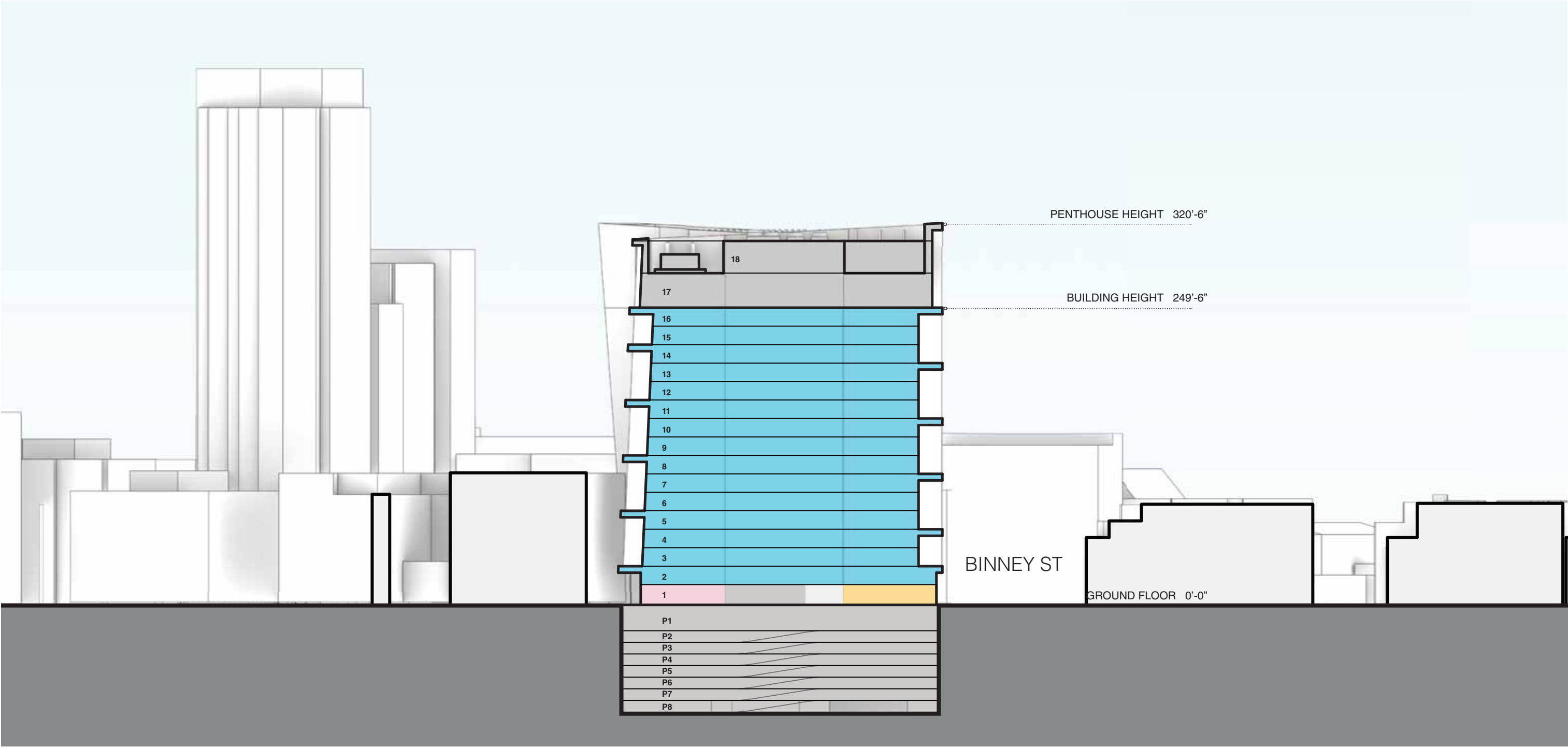
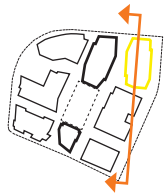
0' 15' 30' 60'

1.3.5 SITE SECTIONS
TRANSVERSE

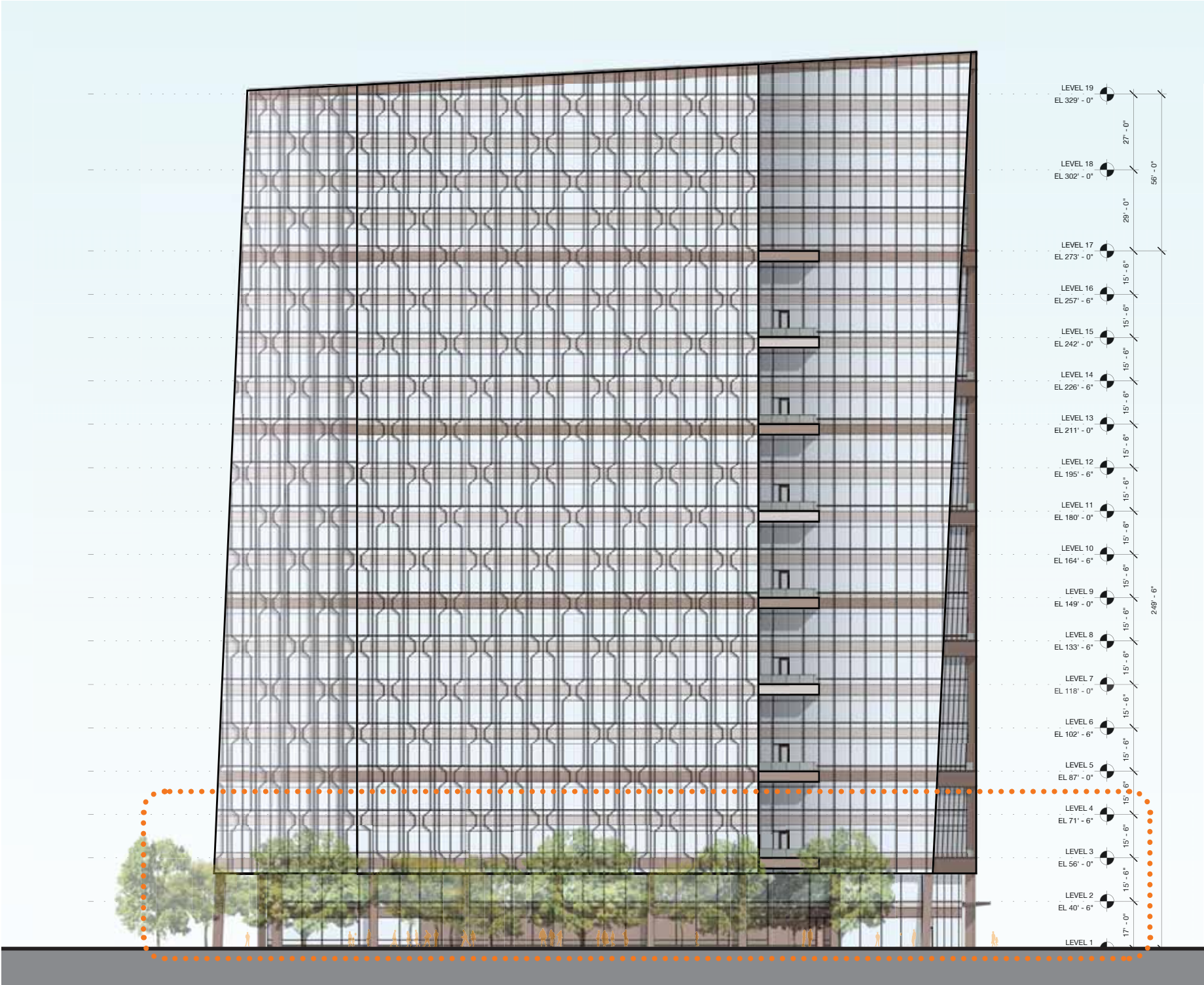


0' 30' 60' 120'

1.3.5 SITE SECTIONS
LONGITUDINAL



1.3.6 BUILDING ELEVATIONS

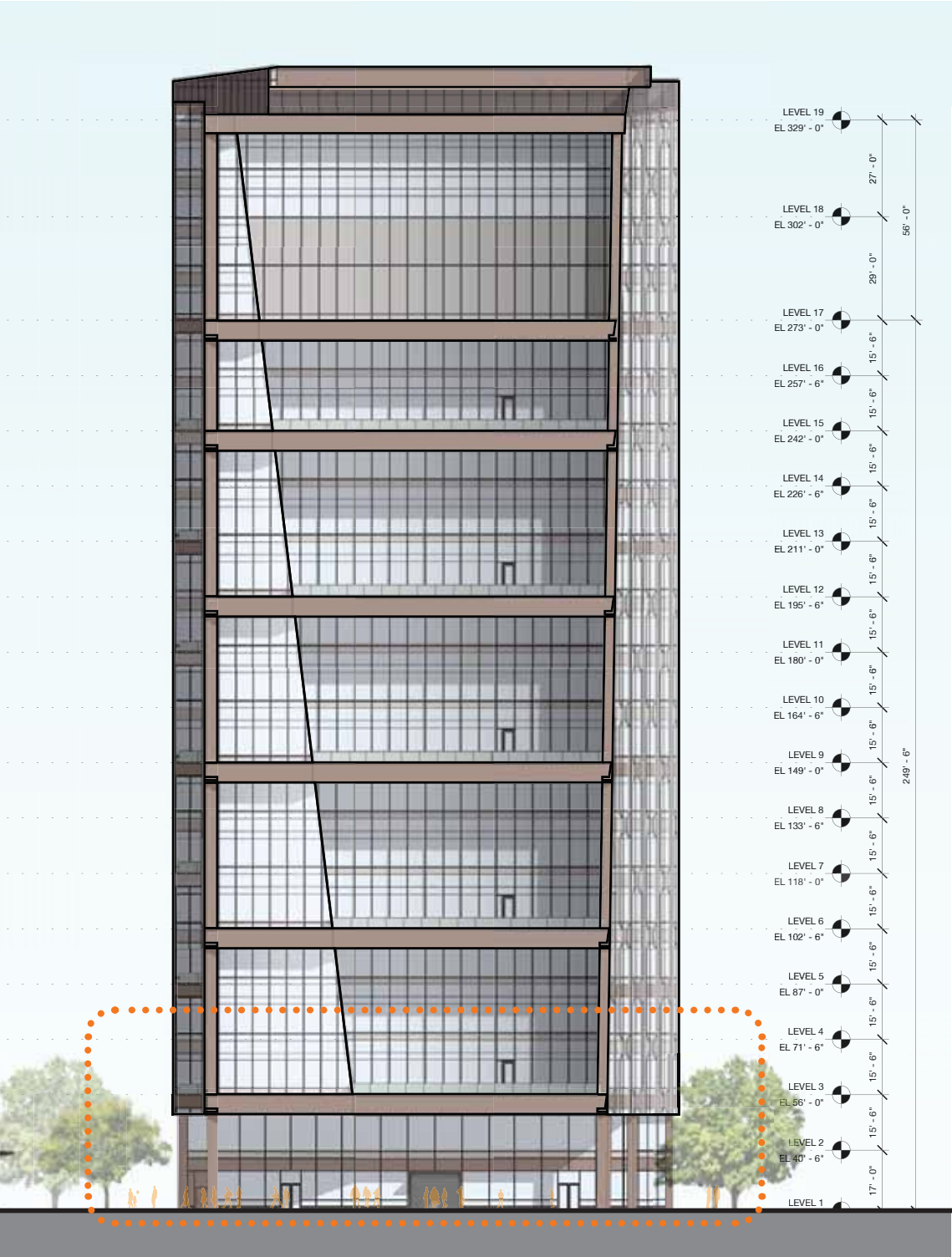


* Floor elevations are measured from sea level

EAST ELEVATION

250 BINNEY STREET

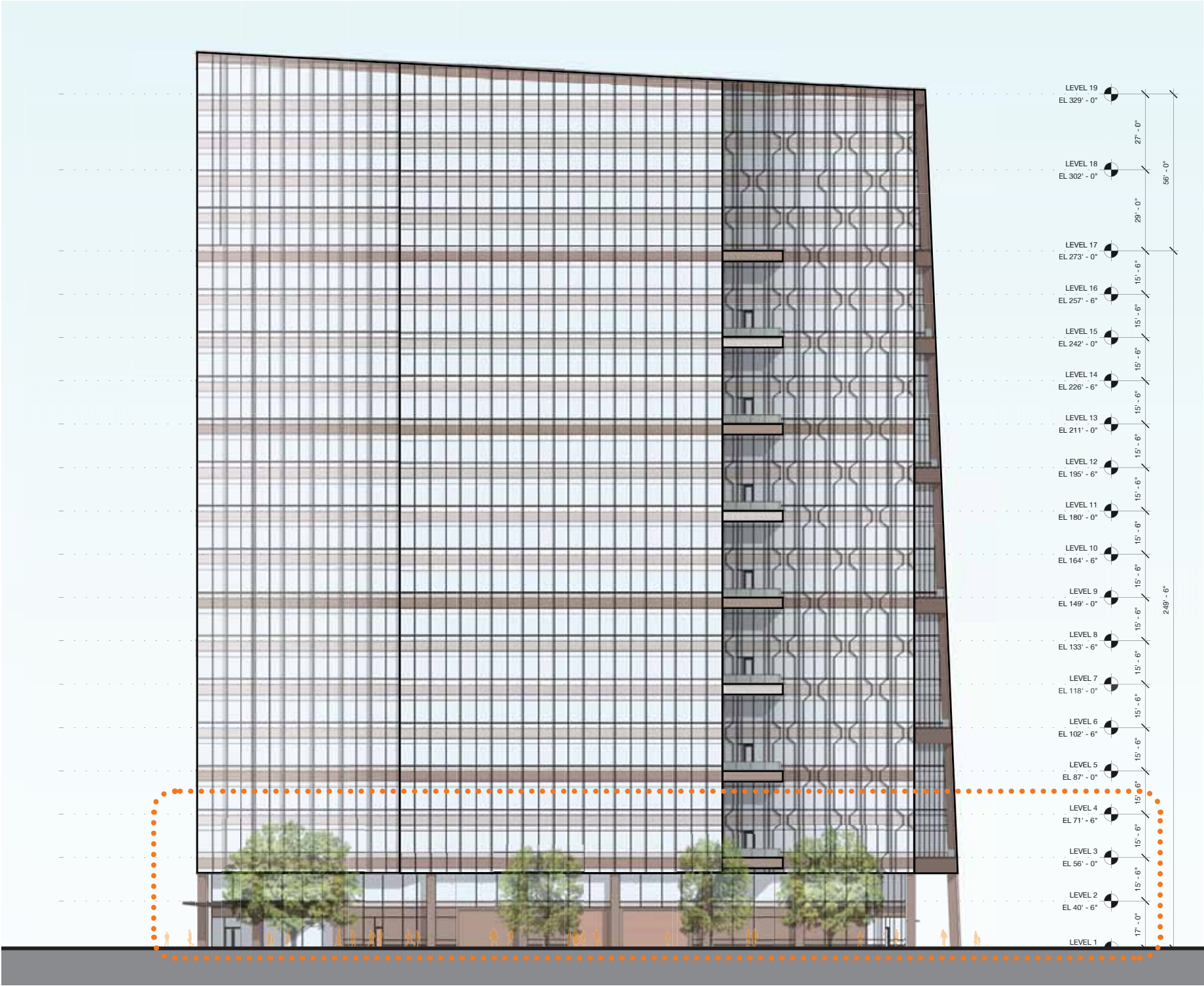
DESIGN REVIEW RESUBMISSION MARCH 15, 2022



SOUTH ELEVATION

PICKARD CHILTON

1.3.6 BUILDING ELEVATIONS

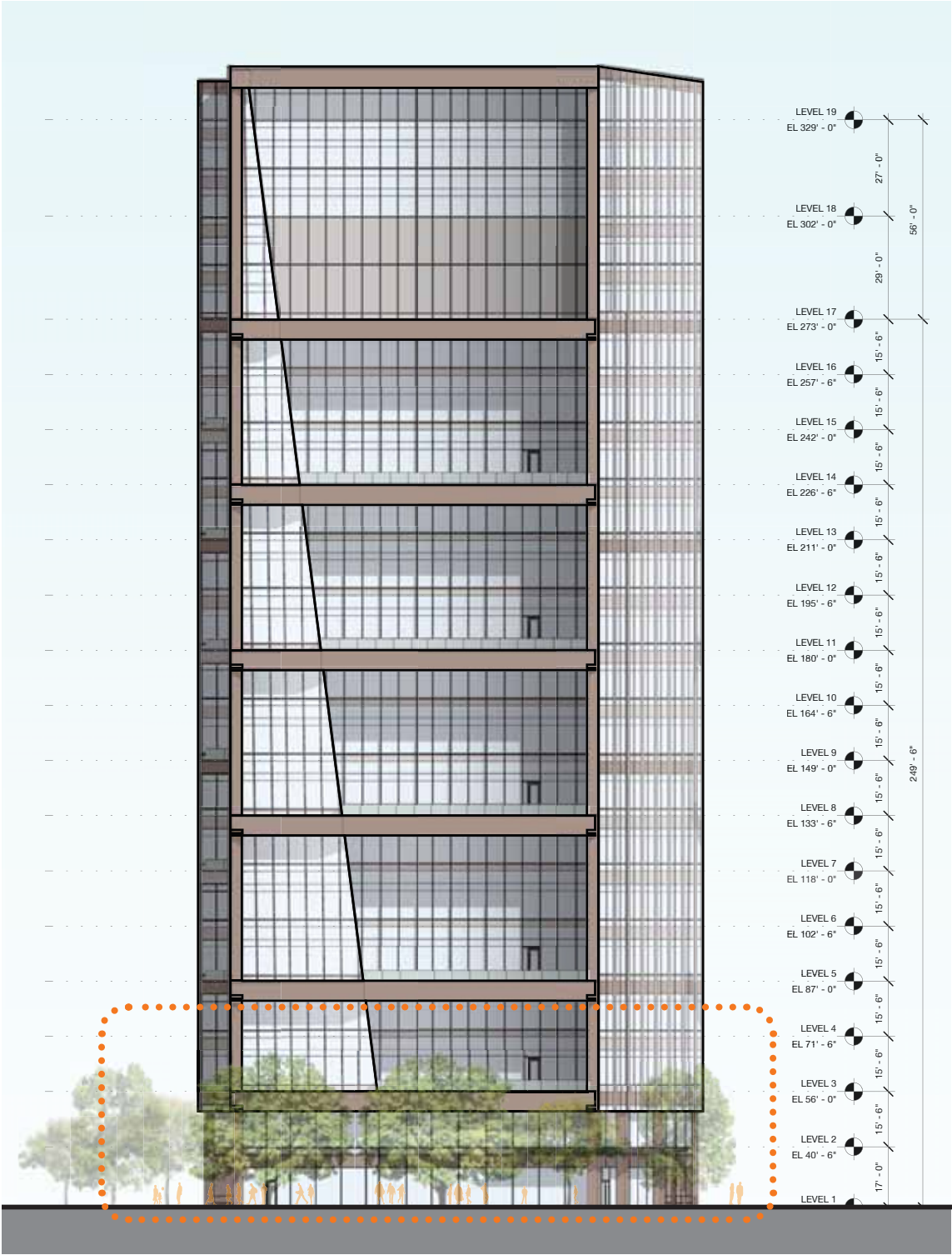


* Floor elevations are measured from sea level

WEST ELEVATION

250 BINNEY STREET

DESIGN REVIEW RESUBMISSION MARCH 15, 2022



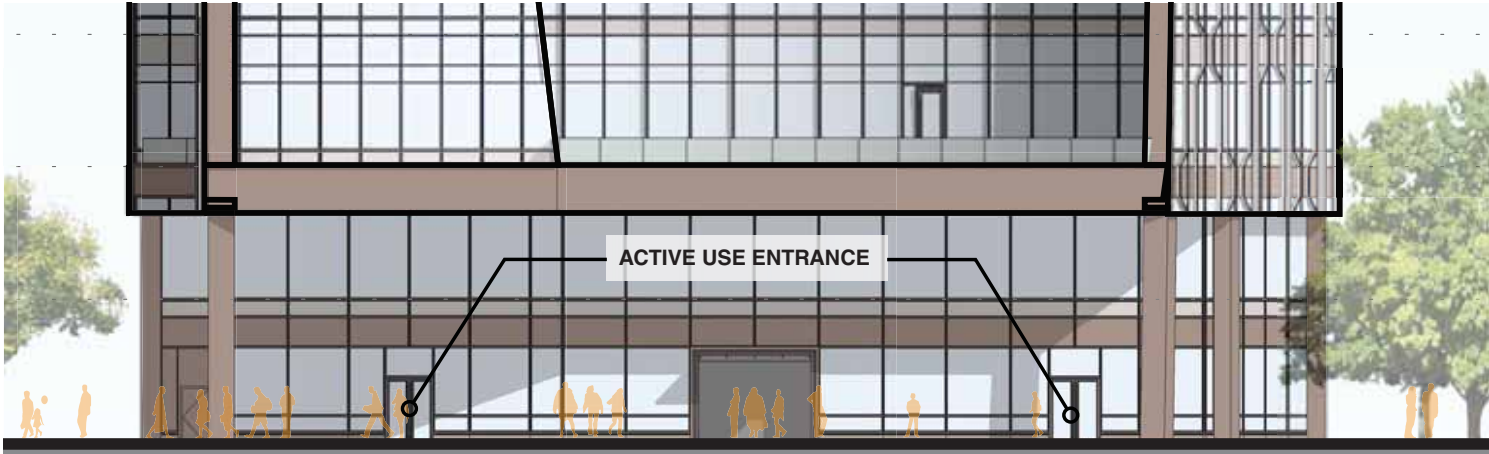
NORTH ELEVATION

PICKARD CHILTON

1.3.6 BUILDING ELEVATIONS



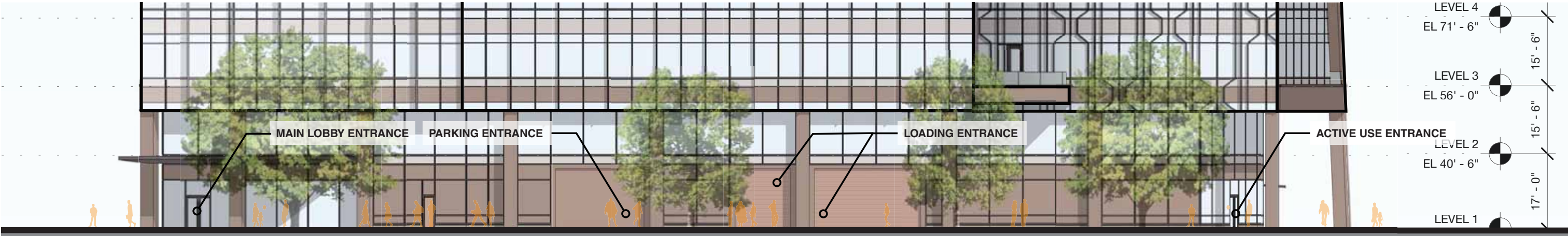
NORTH ELEVATION



SOUTH ELEVATION



EAST ELEVATION

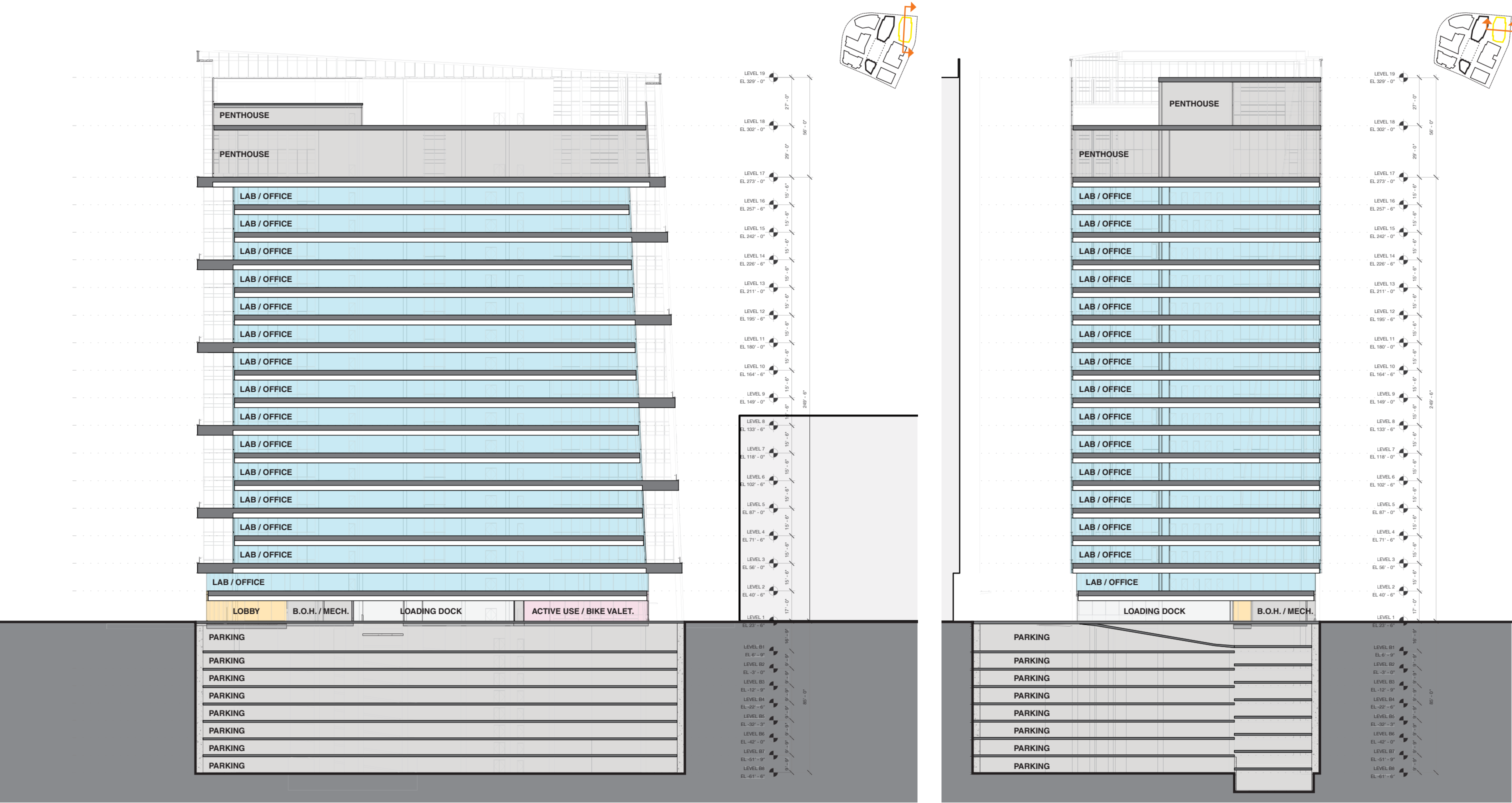


WEST ELEVATION

250 BINNEY STREET

PICKARD CHILTON

1.3.7 BUILDING SECTIONS



* Floor elevations are measured from sea level

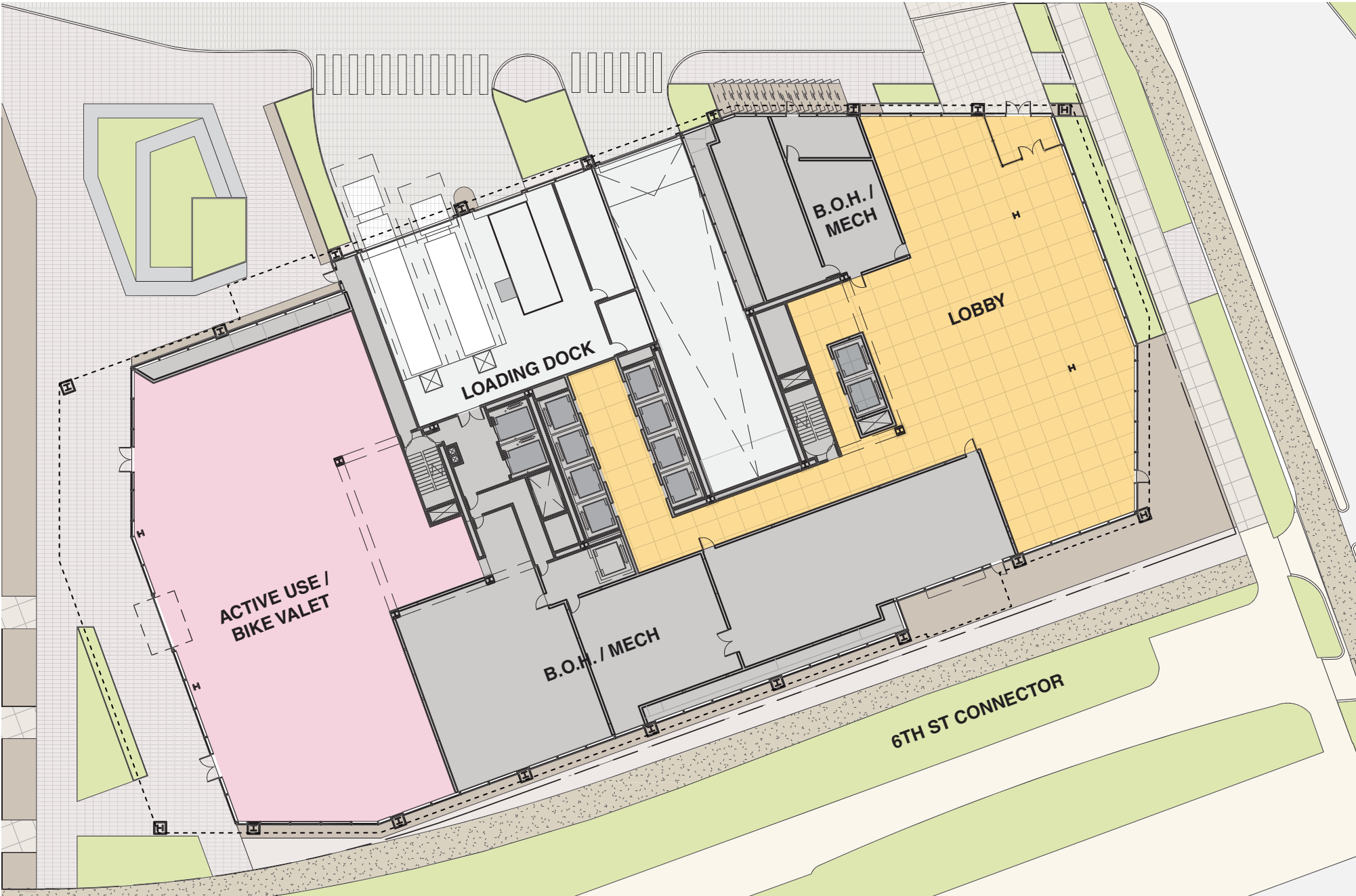
LONGITUDINAL

TRANSVERSE

250 BINNEY STREET

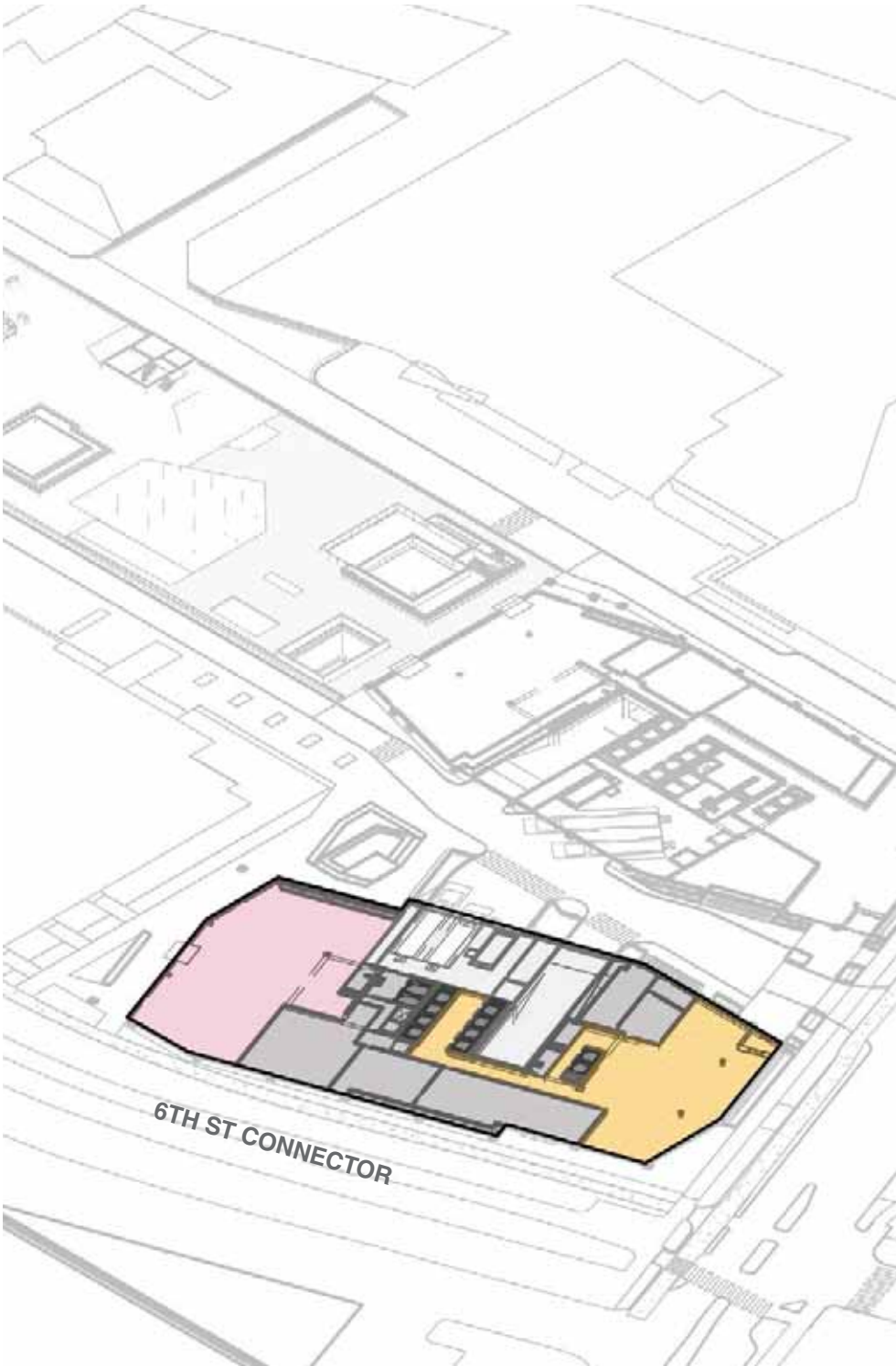
PICKARD CHILTON

1.3.8 BUILDING PLANS
GROUND LEVEL



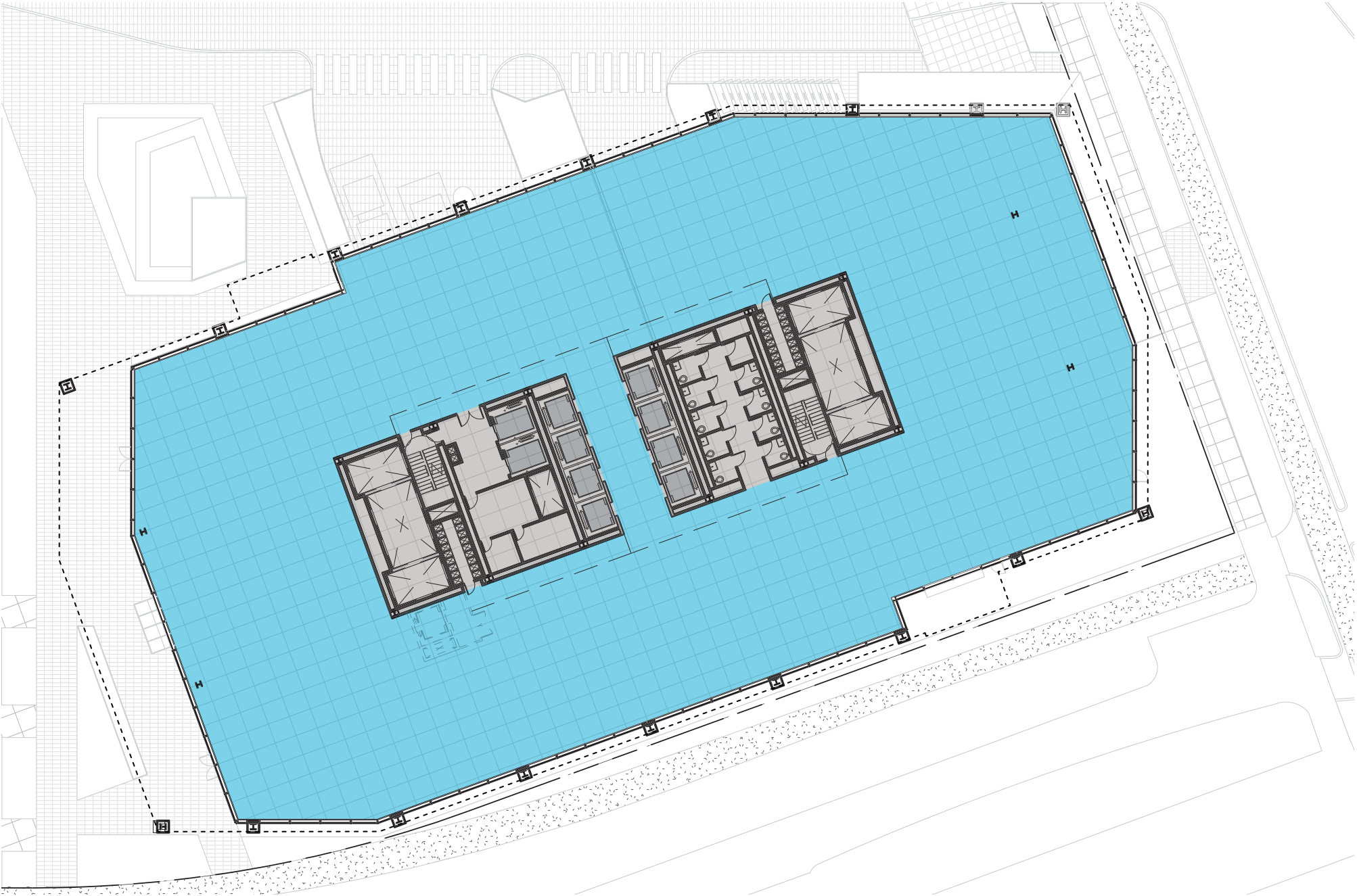
7.3K GFA ACTIVE USE - 7.3K GFA LOBBY

- Lab / Office
- Lobby
- Elevator Car
- Active Use / Bike Valet
- Mechanical/Storage
- Potential Tenant Terrace



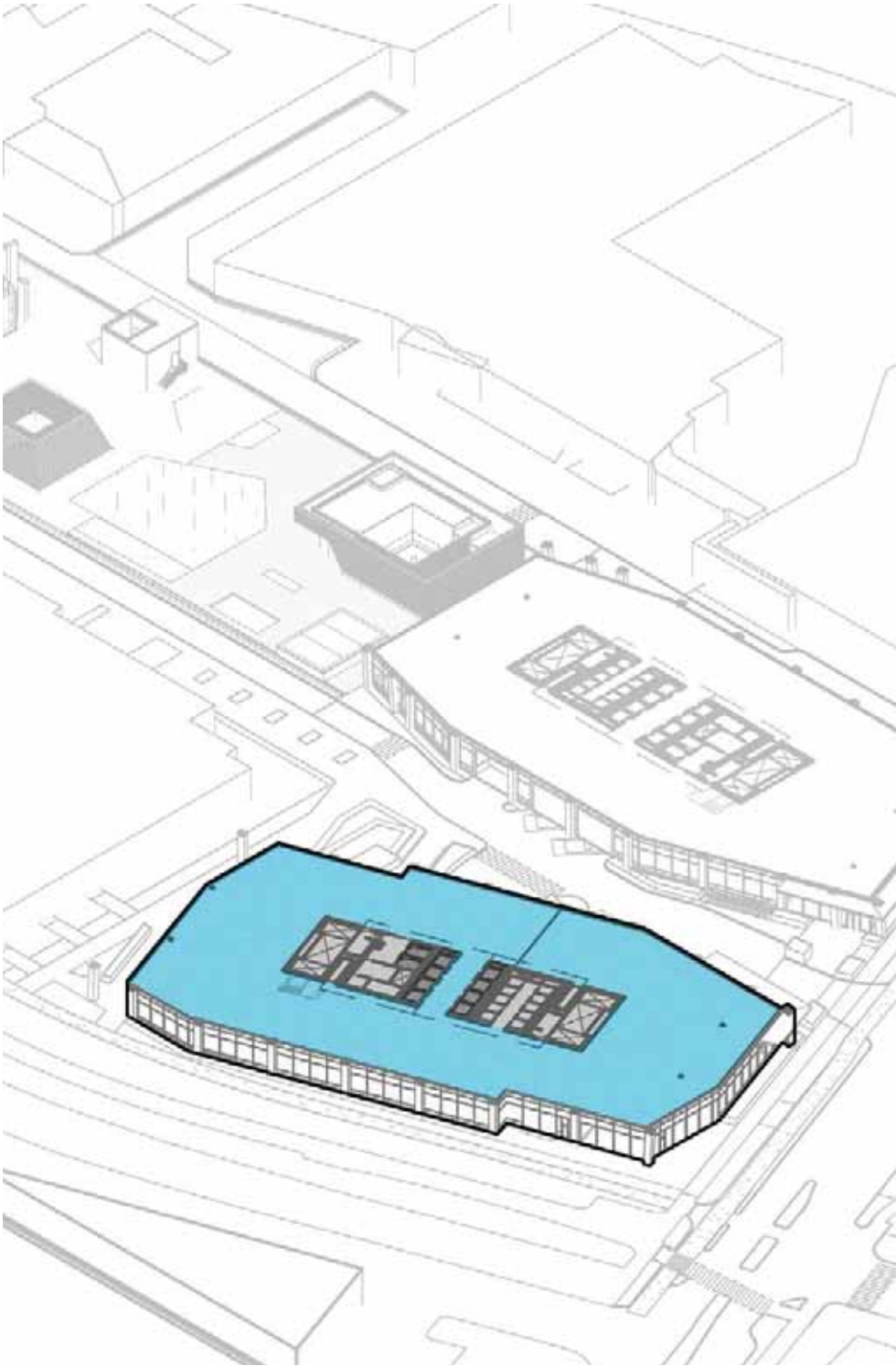
AXONOMETRIC

1.3.8 BUILDING PLANS
LEVEL 2



27.8K GFA LAB / OFFICE

- Lab / Office
- Lobby
- Elevator Car
- Active Use / Bike Valet
- Mechanical/Storage
- Potential Tenant Terrace



AXONOMETRIC

1.3.8 BUILDING PLANS
LEVEL 3

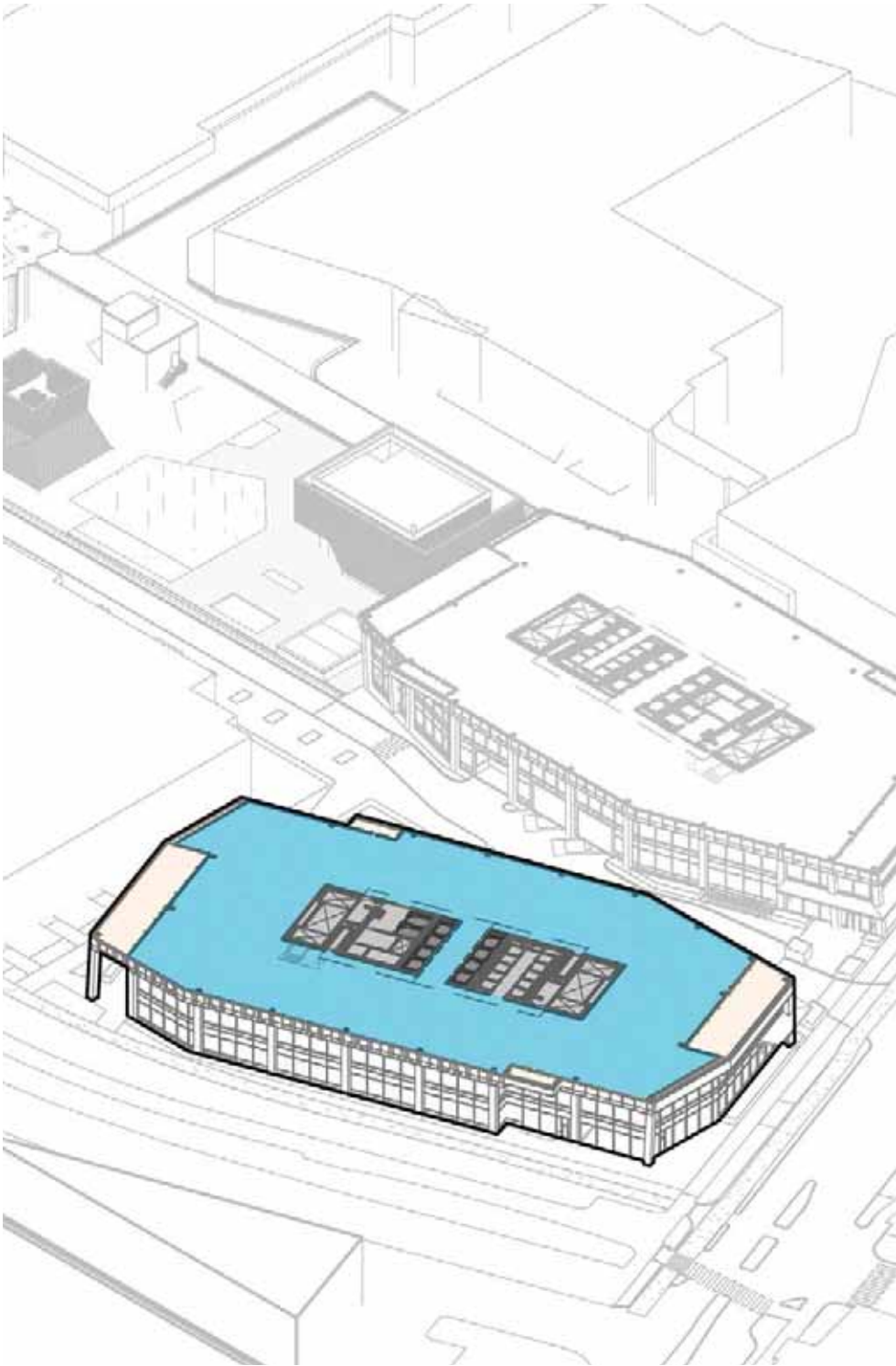


28.9K GFA LAB / OFFICE

- Lab / Office
- Lobby
- Elevator Car
- Active Use / Bike Valet
- Mechanical/Storage
- Potential Tenant Terrace



AXONOMETRIC

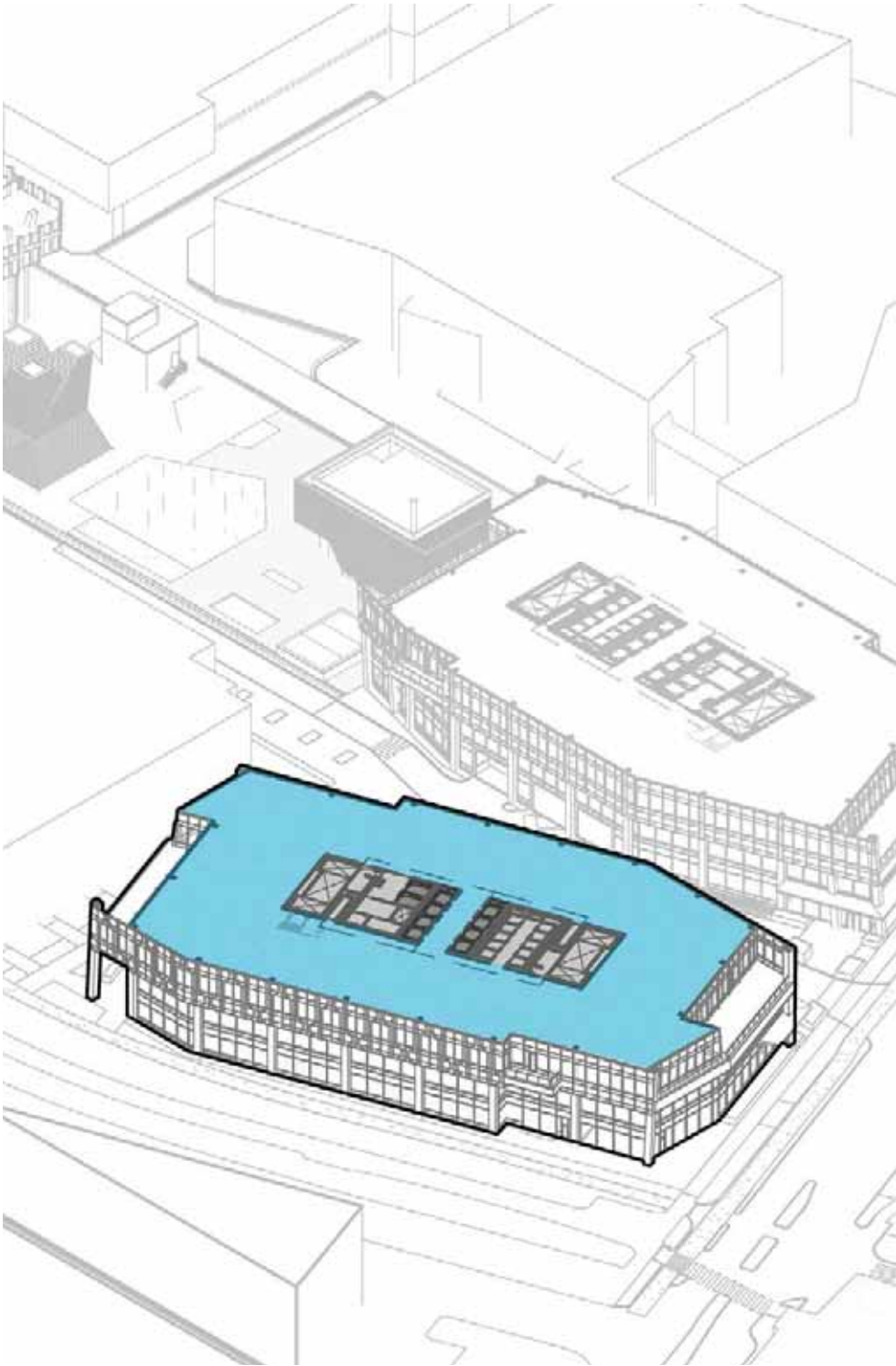


1.3.8 BUILDING PLANS
LEVEL 4



28.8K GFA LAB / OFFICE

- | | |
|--------------|--------------------------|
| Lab / Office | Active Use / Bike Valet |
| Lobby | Mechanical/Storage |
| Elevator Car | Potential Tenant Terrace |



AXONOMETRIC

1.3.8 BUILDING PLANS
LEVEL 5

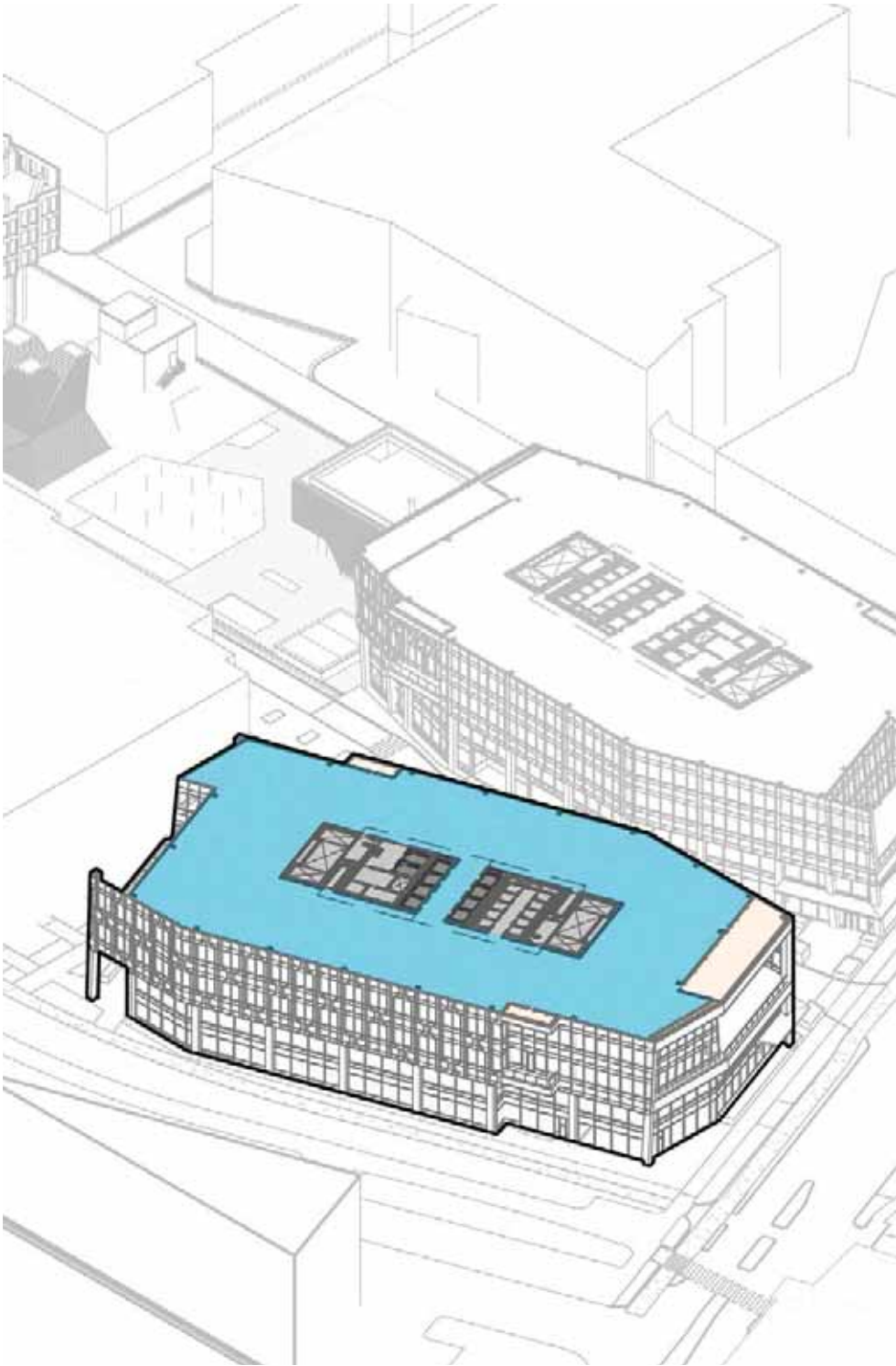


28.7K GFA LAB / OFFICE

- Lab / Office
- Lobby
- Elevator Car
- Active Use / Bike Valet
- Mechanical/Storage
- Potential Tenant Terrace



AXONOMETRIC



1.3.8 BUILDING PLANS
LEVEL 6

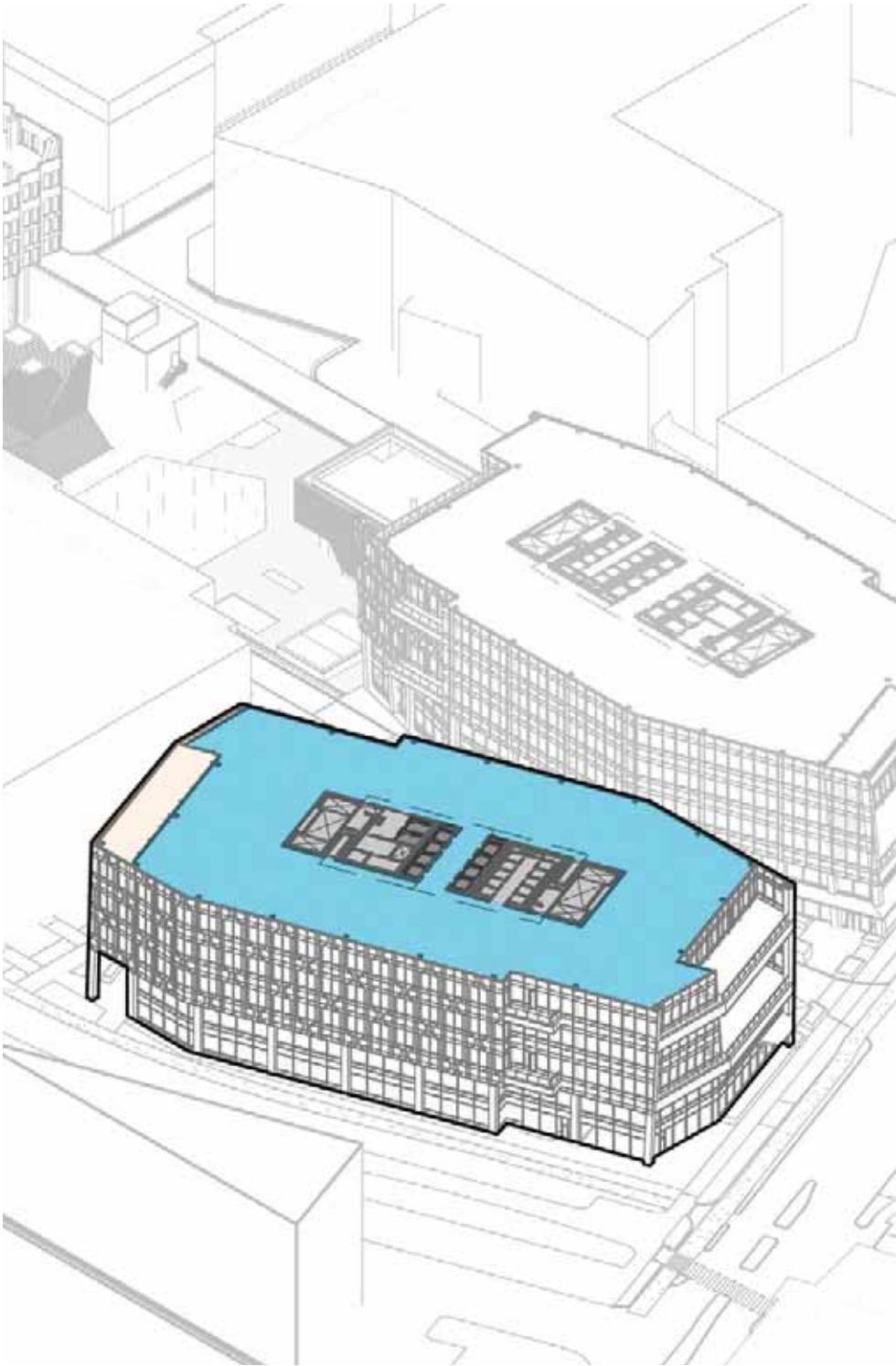


28.6K GFA LAB / OFFICE

- | | |
|--------------|--------------------------|
| Lab / Office | Active Use / Bike Valet |
| Lobby | Mechanical/Storage |
| Elevator Car | Potential Tenant Terrace |



AXONOMETRIC



1.3.8 BUILDING PLANS
LEVEL 7

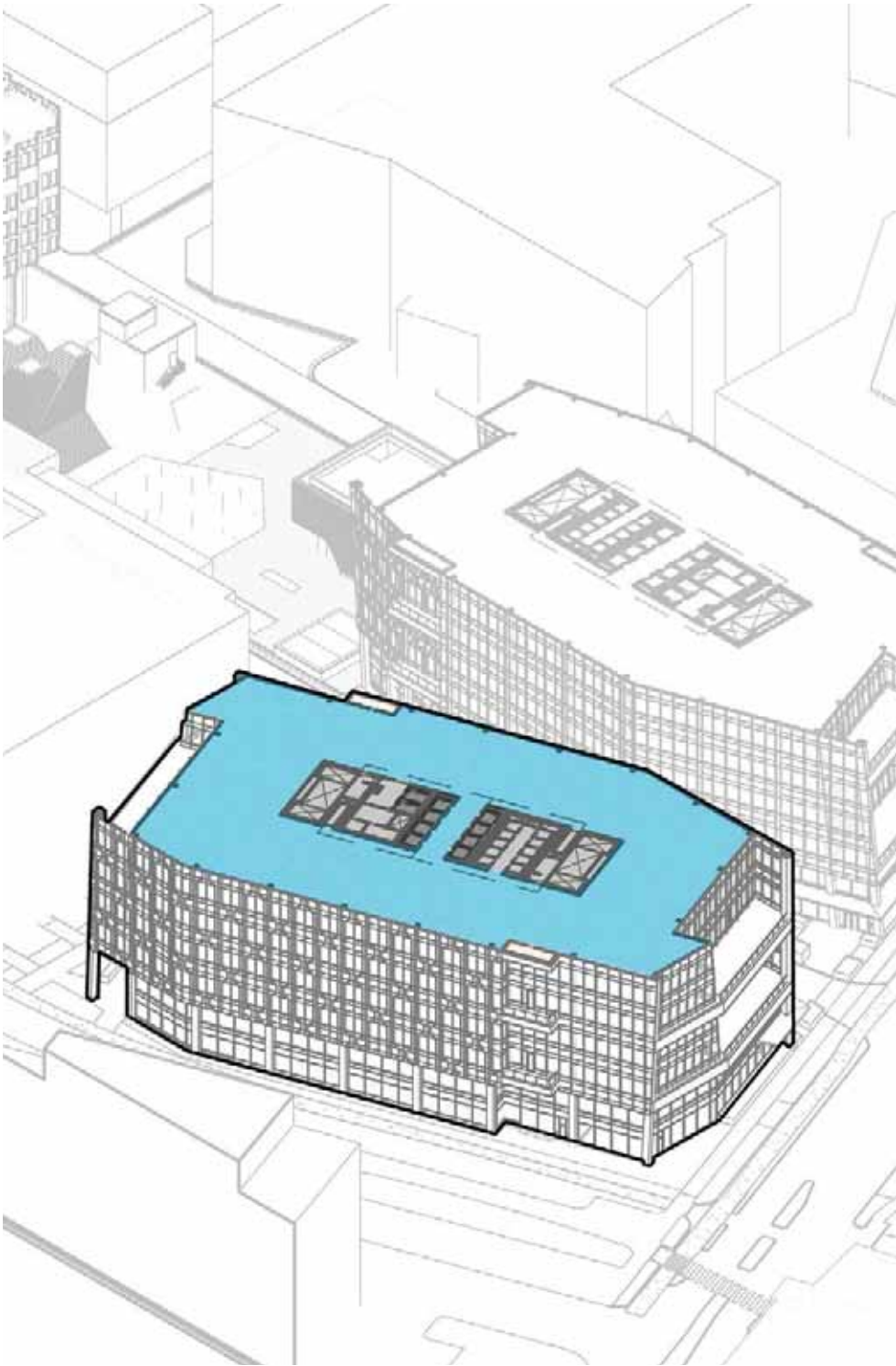


28.5K GFA LAB / OFFICE

- | | |
|--------------|--------------------------|
| Lab / Office | Active Use / Bike Valet |
| Lobby | Mechanical/Storage |
| Elevator Car | Potential Tenant Terrace |



AXONOMETRIC

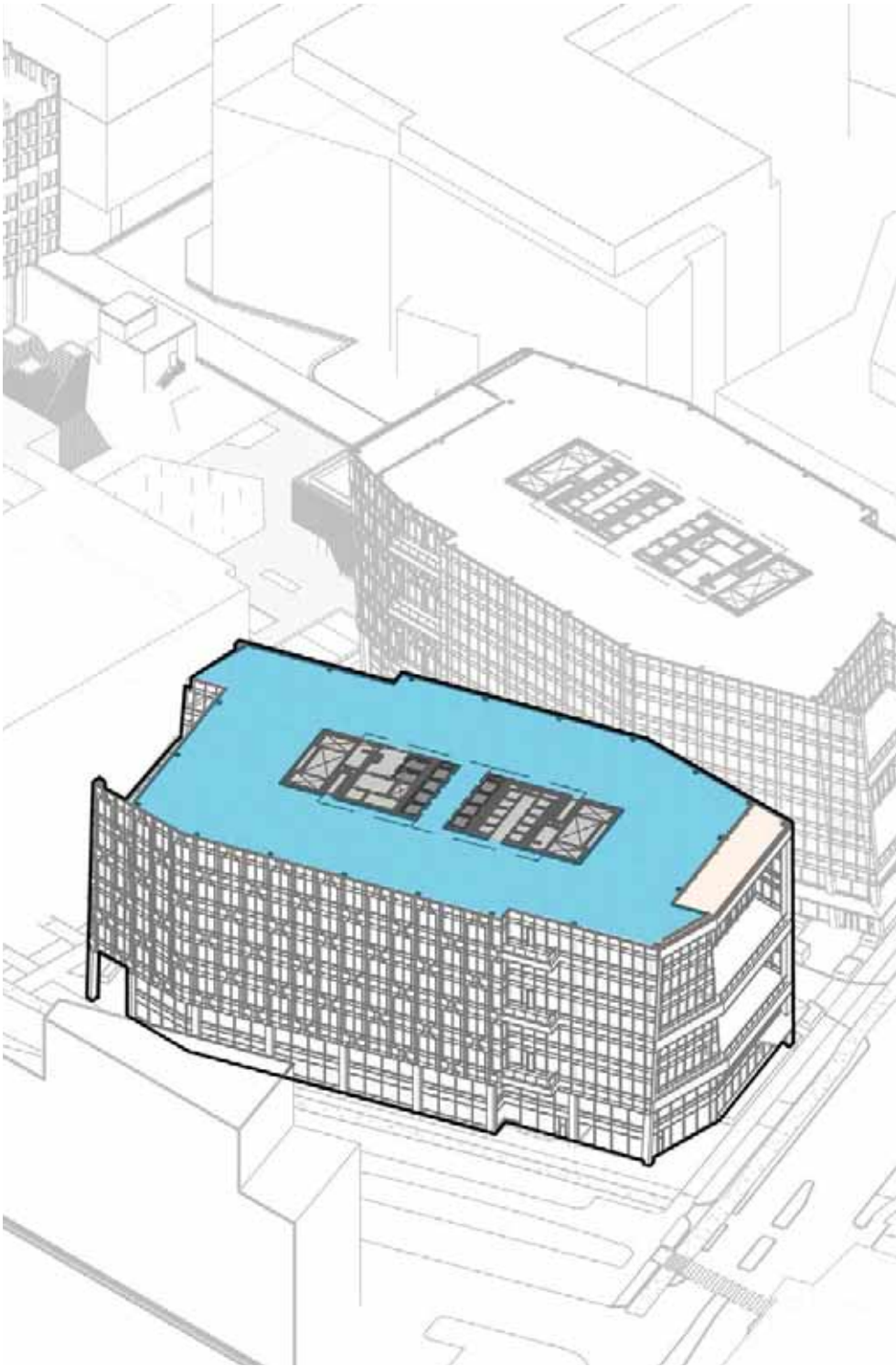


1.3.8 BUILDING PLANS
LEVEL 8



28.4K GFA LAB / OFFICE

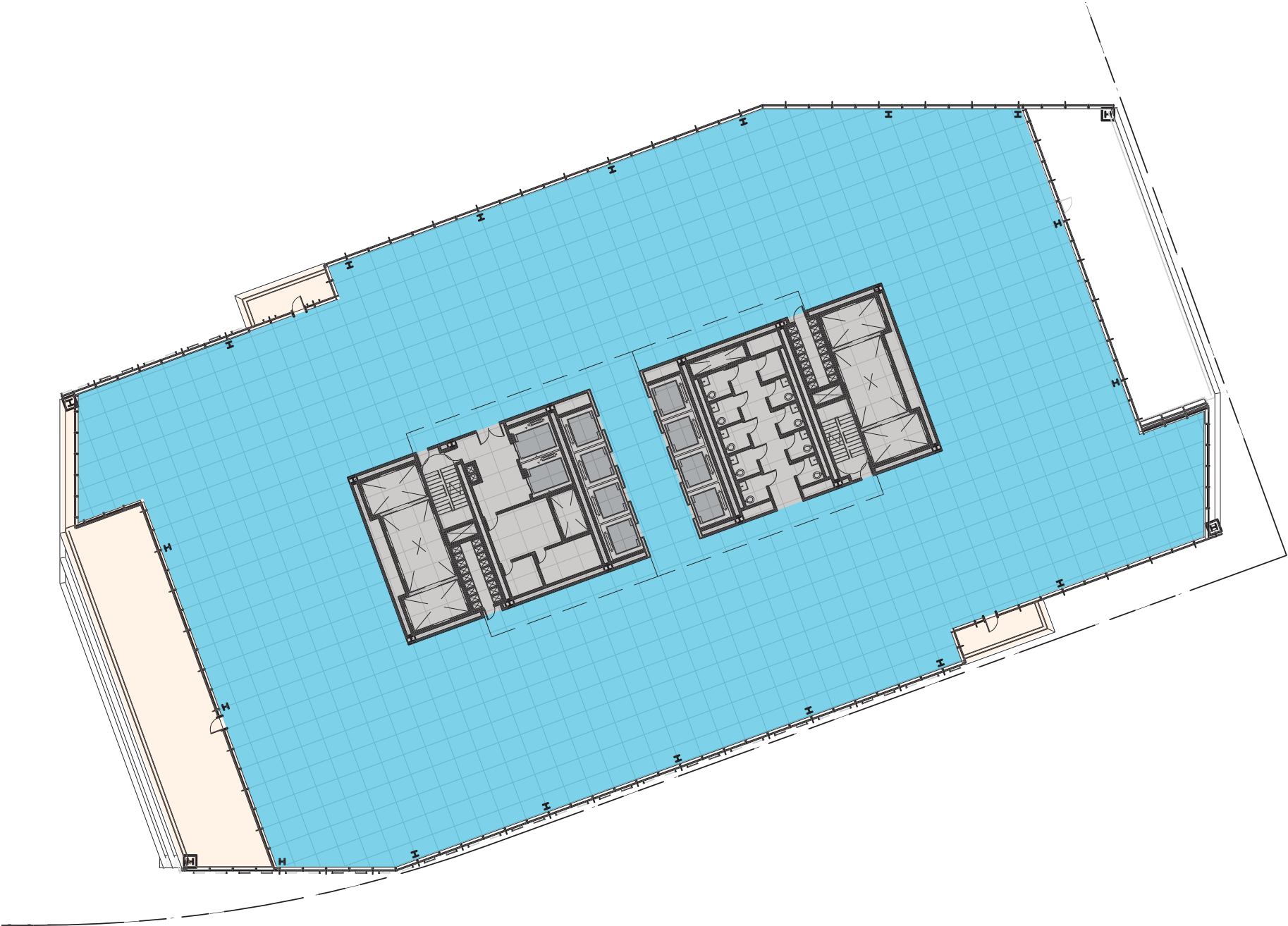
- | | |
|--------------|--------------------------|
| Lab / Office | Active Use / Bike Valet |
| Lobby | Mechanical/Storage |
| Elevator Car | Potential Tenant Terrace |



AXONOMETRIC

1.3.8 BUILDING PLANS

LEVEL 9

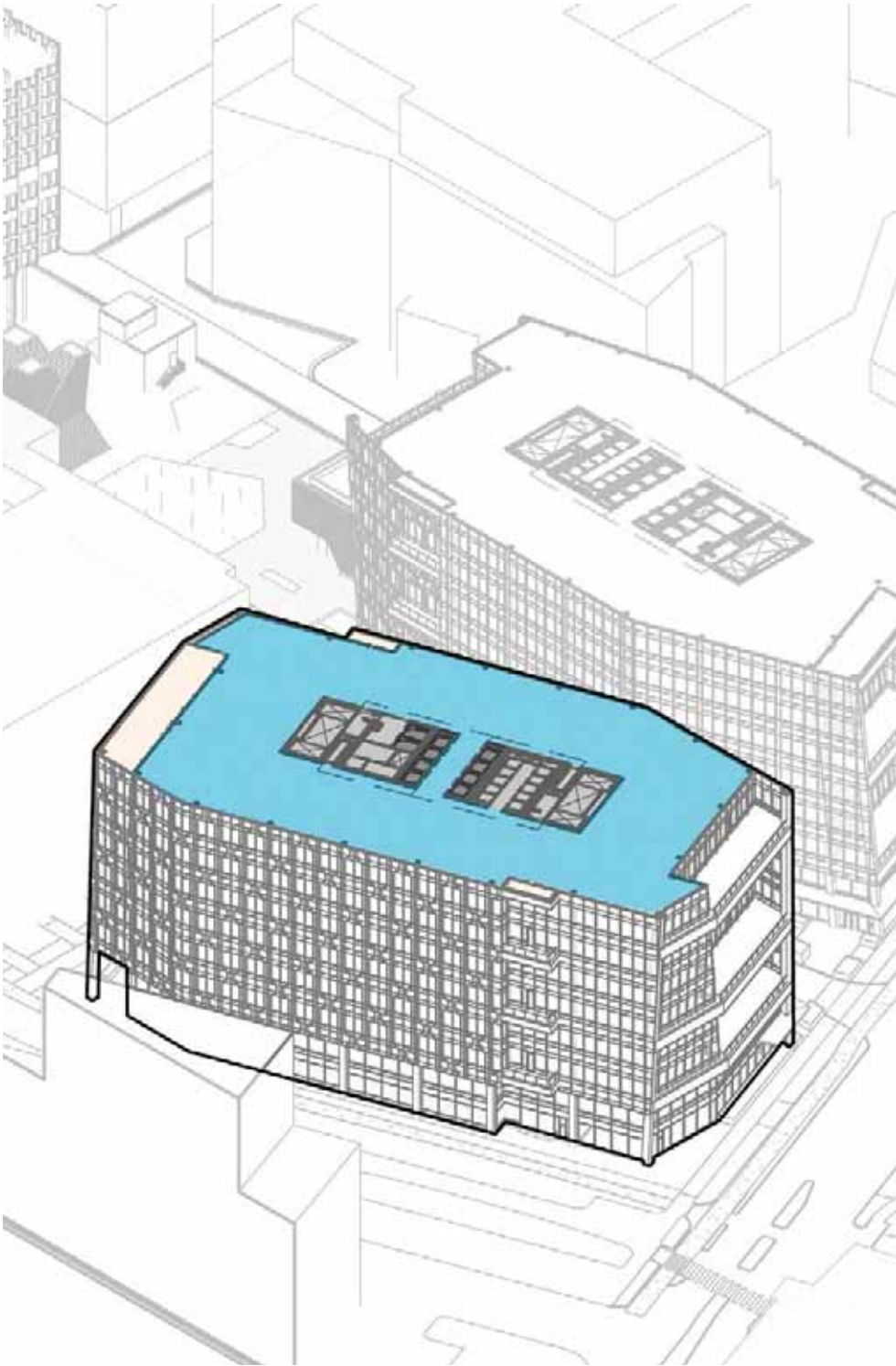


28.3K GFA LAB / OFFICE

- Lab / Office
- Lobby
- Elevator Car
- Active Use / Bike Valet
- Mechanical/Storage
- Potential Tenant Terrace



AXONOMETRIC

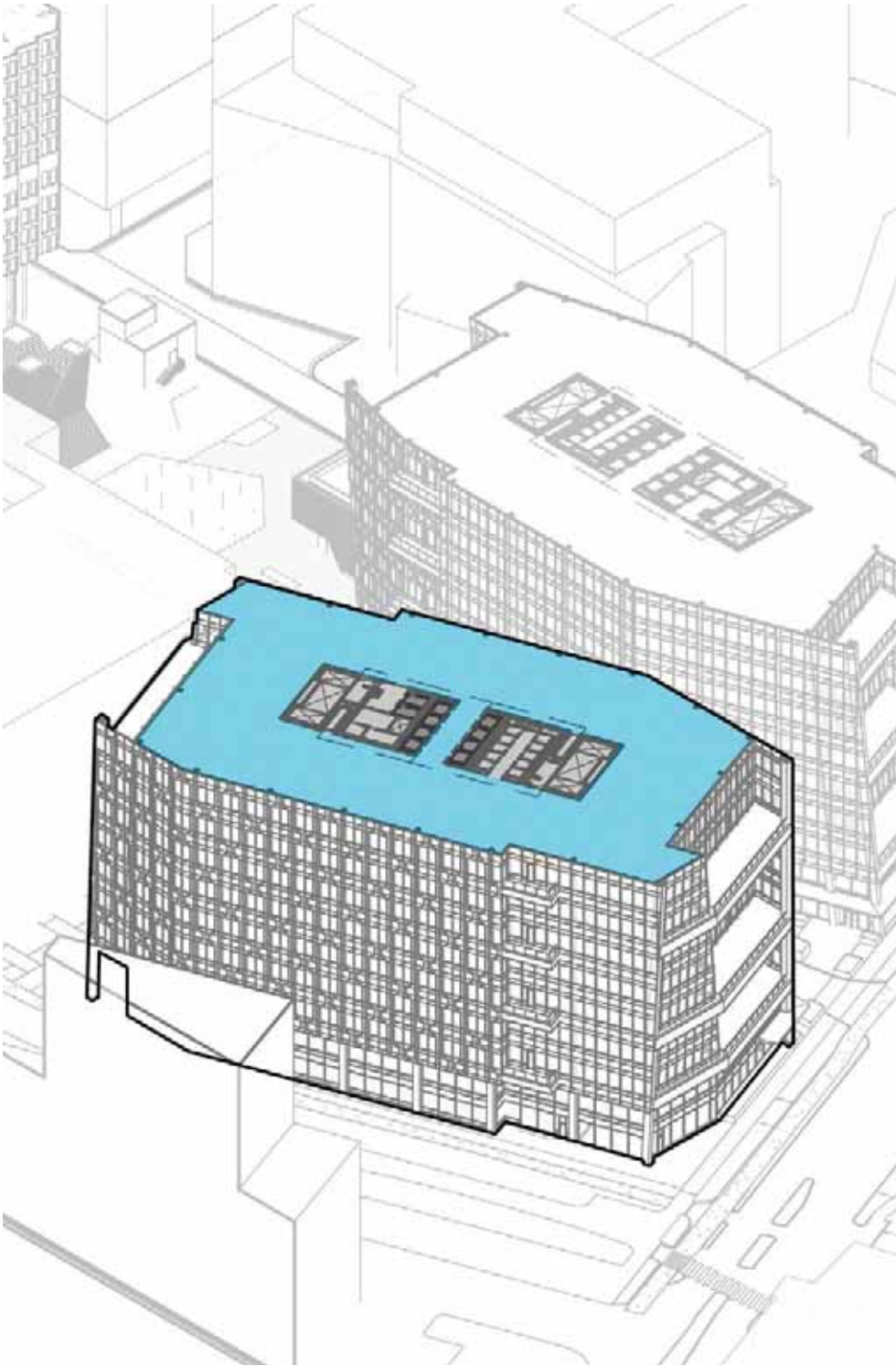


1.3.8 BUILDING PLANS
LEVEL 10



28.2K GFA LAB / OFFICE

- | | |
|--------------|--------------------------|
| Lab / Office | Active Use / Bike Valet |
| Lobby | Mechanical/Storage |
| Elevator Car | Potential Tenant Terrace |



AXONOMETRIC