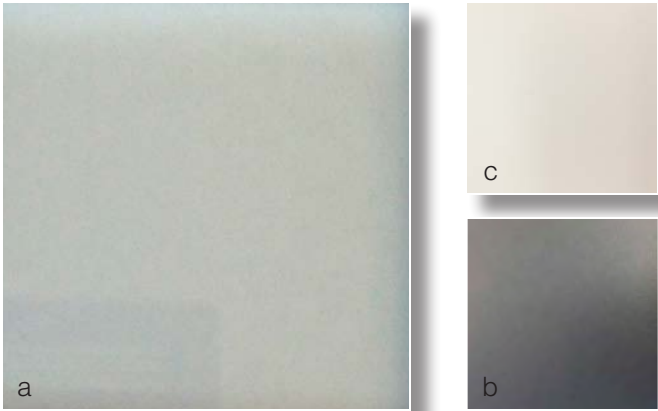
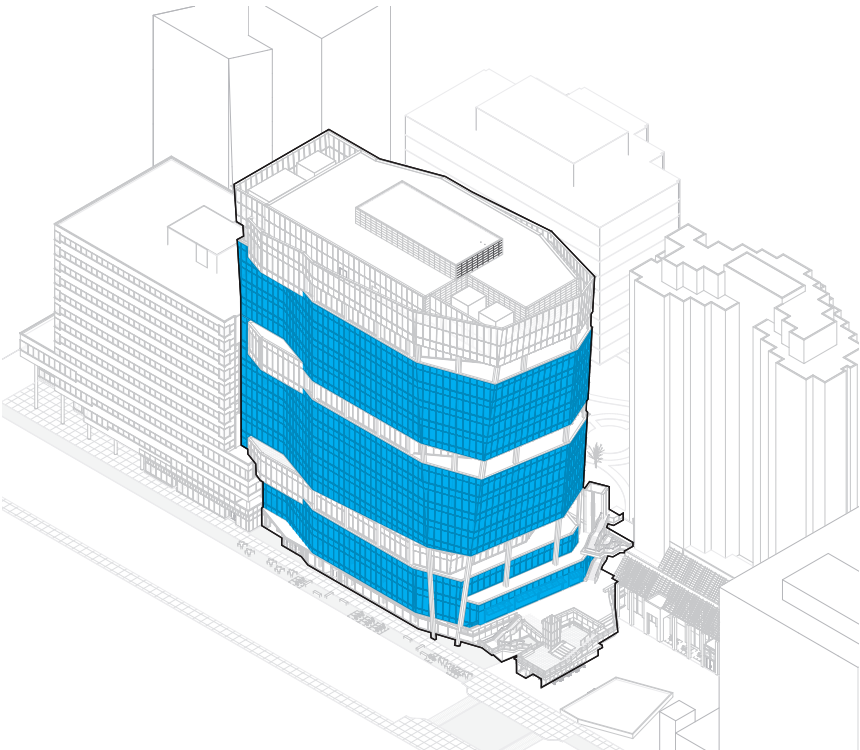


1.3.7 ENCLOSURE

TYPOLGY / FINISHES

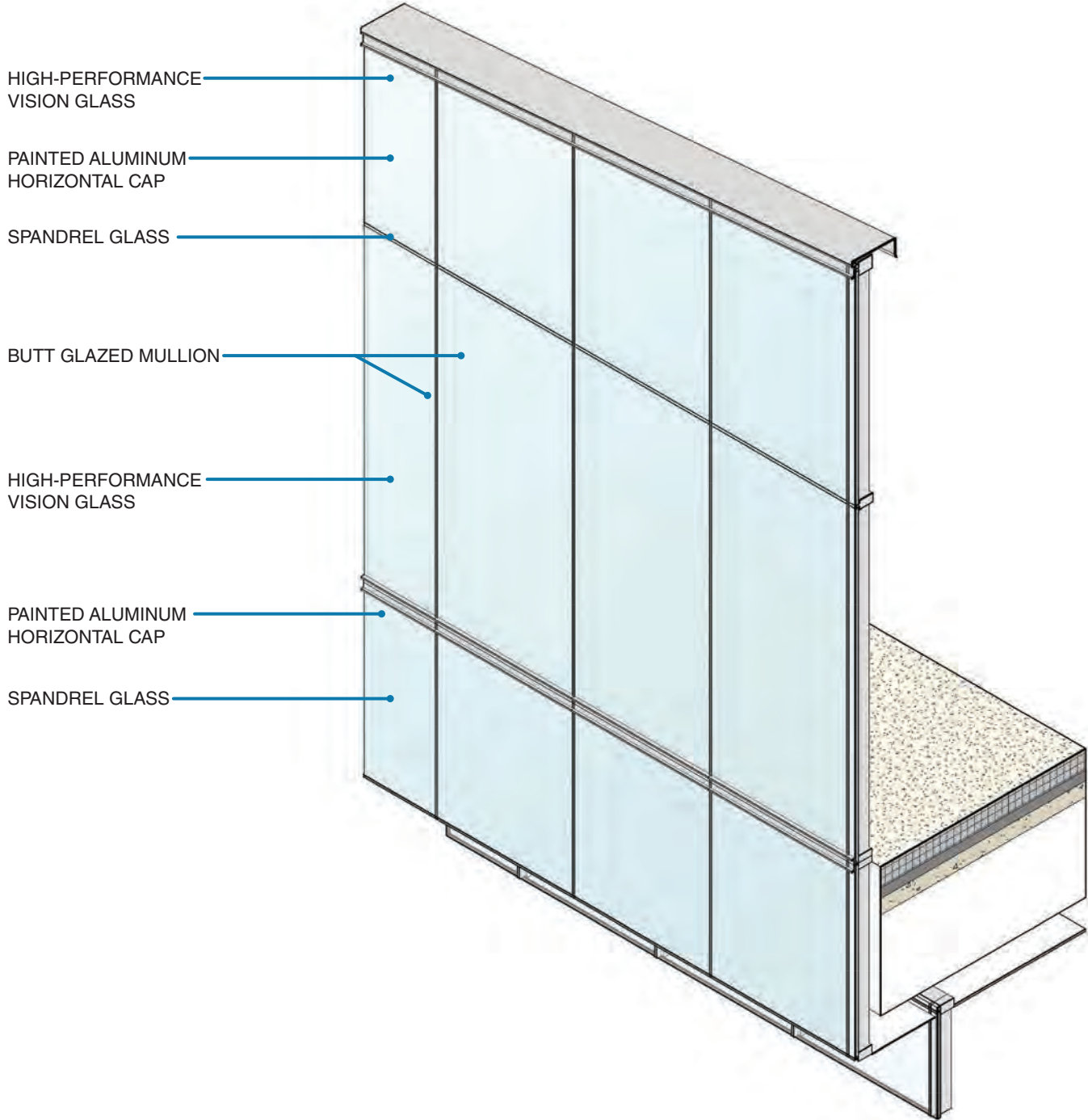
TYPE A1



- a) High Performance Vision Glass (VNE1-63 or similar)
- b) Painted Aluminum (PPG Pewter)
- c) Painted Aluminum (PPG Colonial White)

MATERIAL PALETTE / FINISH OPTIONS

TYPE A1

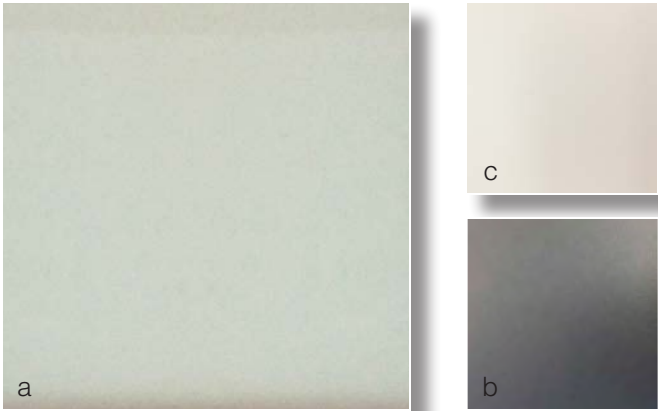
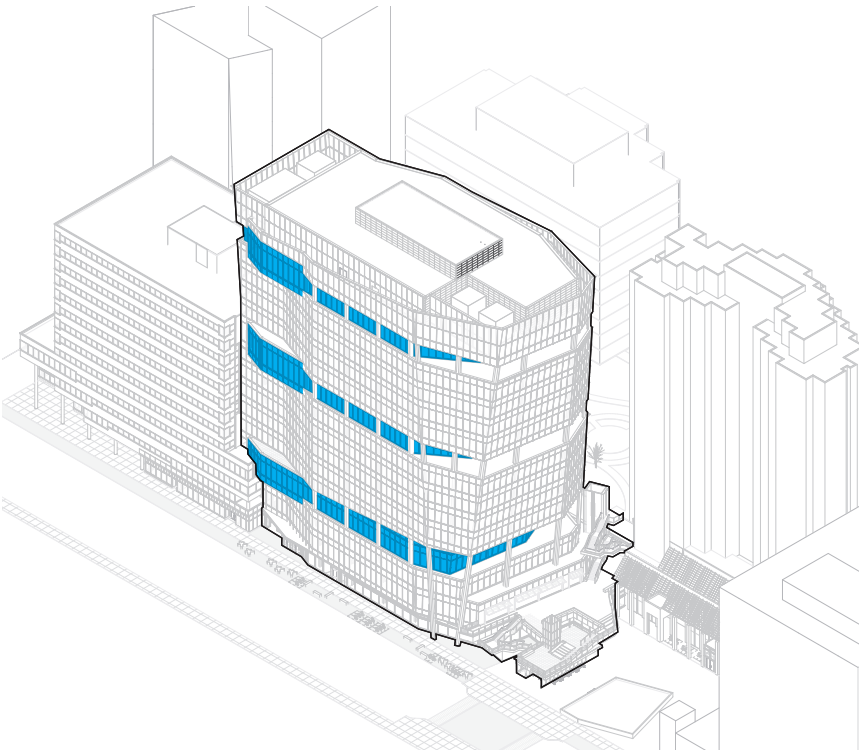


*Note: All material finishes are subject to further development during the design process. Materials and colors shown reflect design intent only, and shouldn't be considered final.

1.3.7 ENCLOSURE

TYPOLOGY / FINISHES

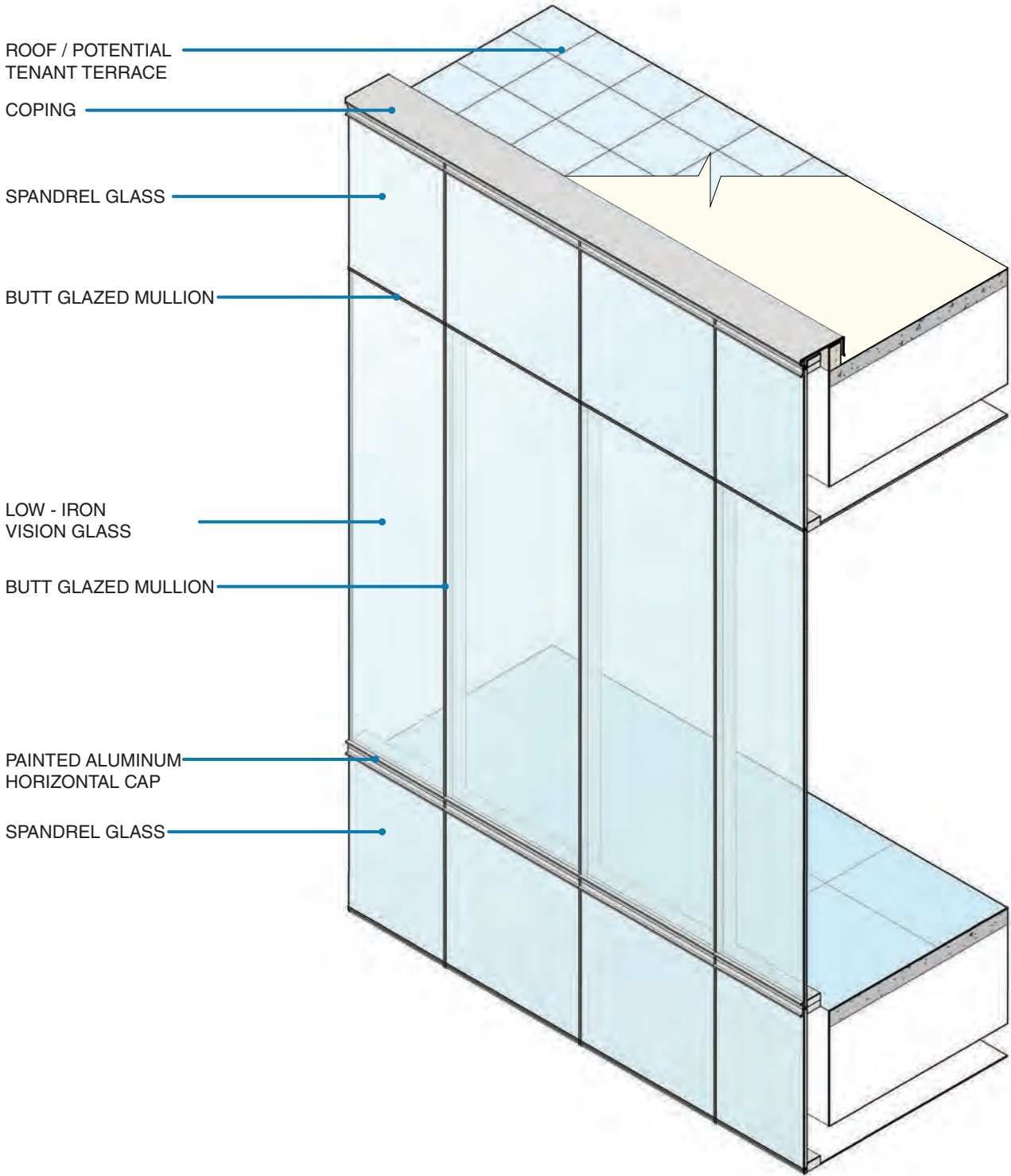
TYPE A2



- a) Low-Iron Vision Glass (VE24-85 or similar)
- b) Painted Aluminum (PPG Pewter)
- c) Painted Aluminum (PPG Colonial White)

MATERIAL PALETTE / FINISH OPTIONS

TYPE A2

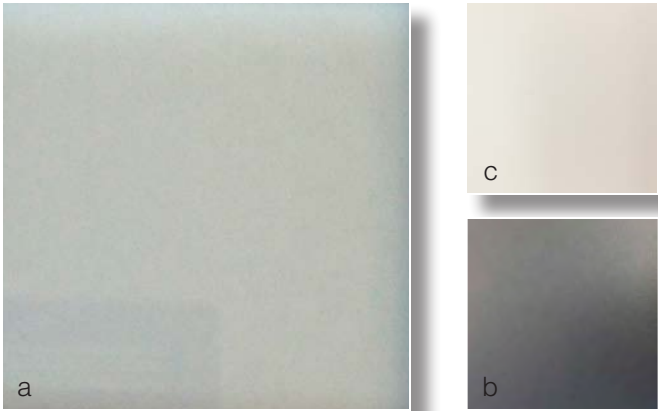
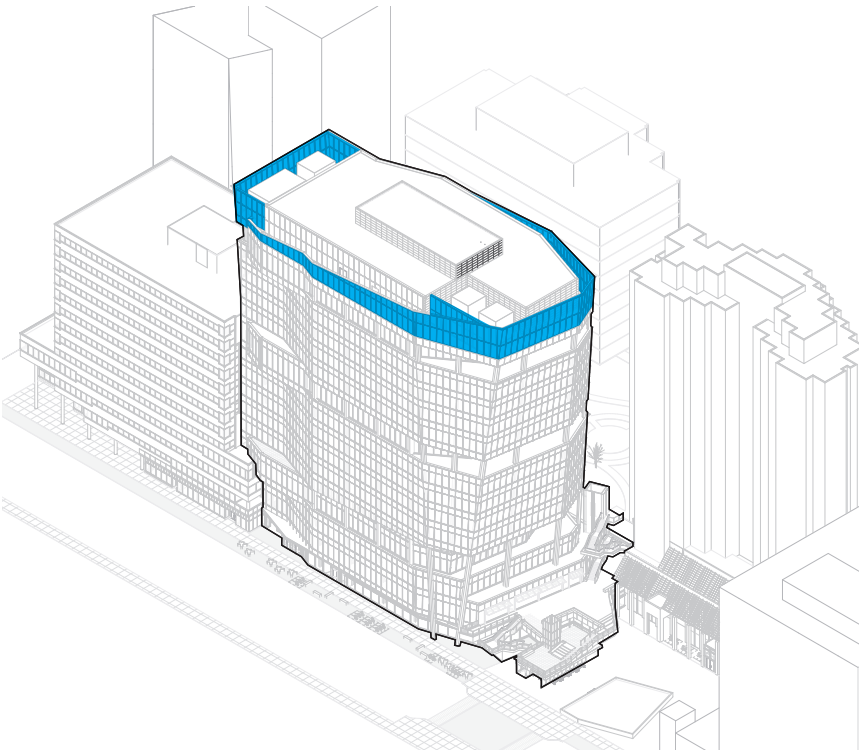


*Note: All material finishes are subject to further development during the design process. Materials and colors shown reflect design intent only, and shouldn't be considered final.

1.3.7 ENCLOSURE

TYPOLGY / FINISHES

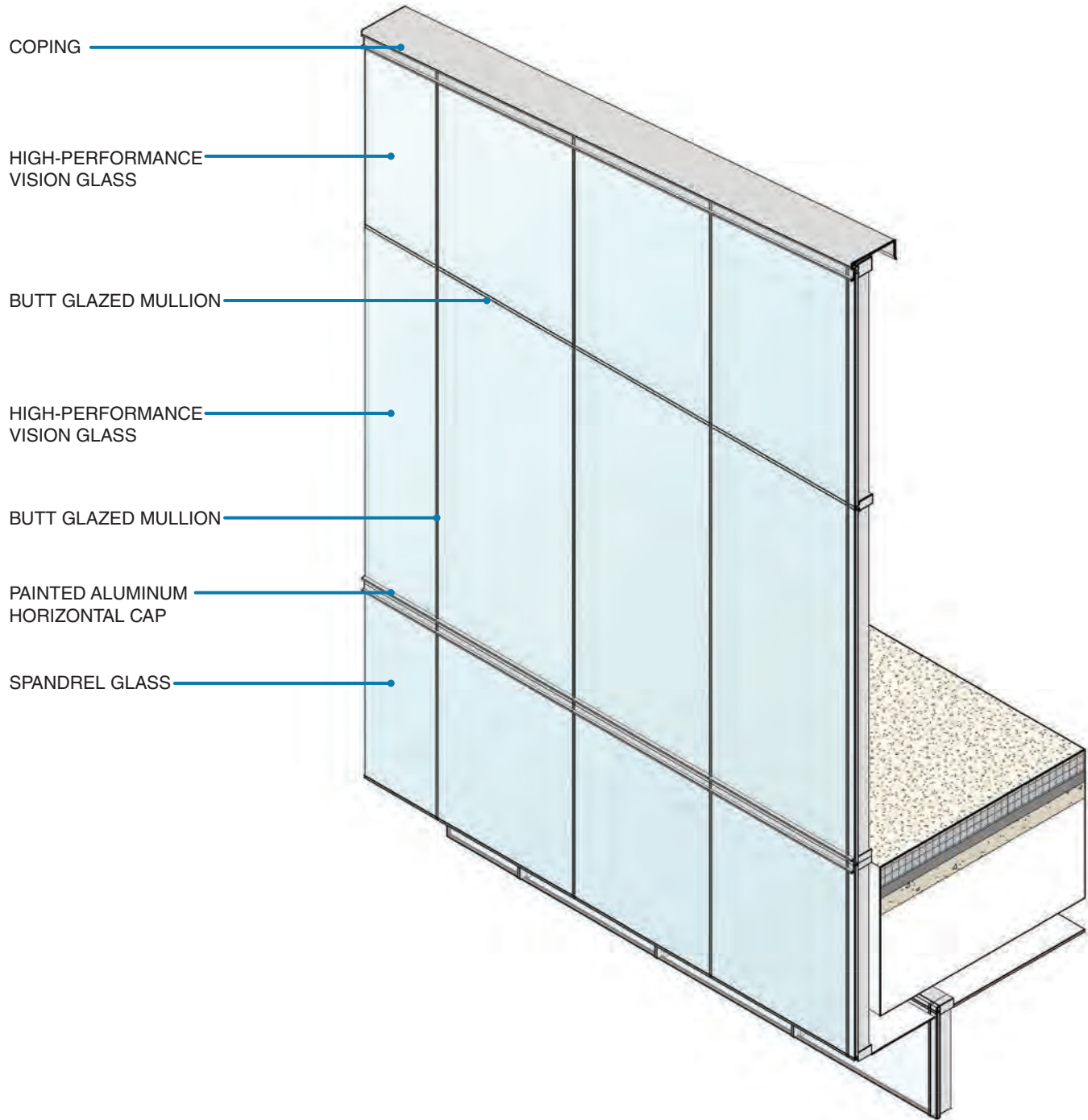
TYPE A3



- a) High Performance Vision Glass (VNE1-63 or similar)
- b) Painted Aluminum (PPG Pewter)
- c) Painted Aluminum (PPG Colonial White)

MATERIAL PALETTE / FINISH OPTIONS

TYPE A3

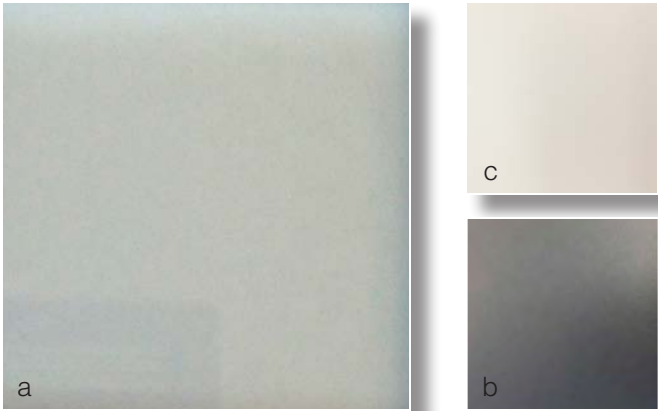
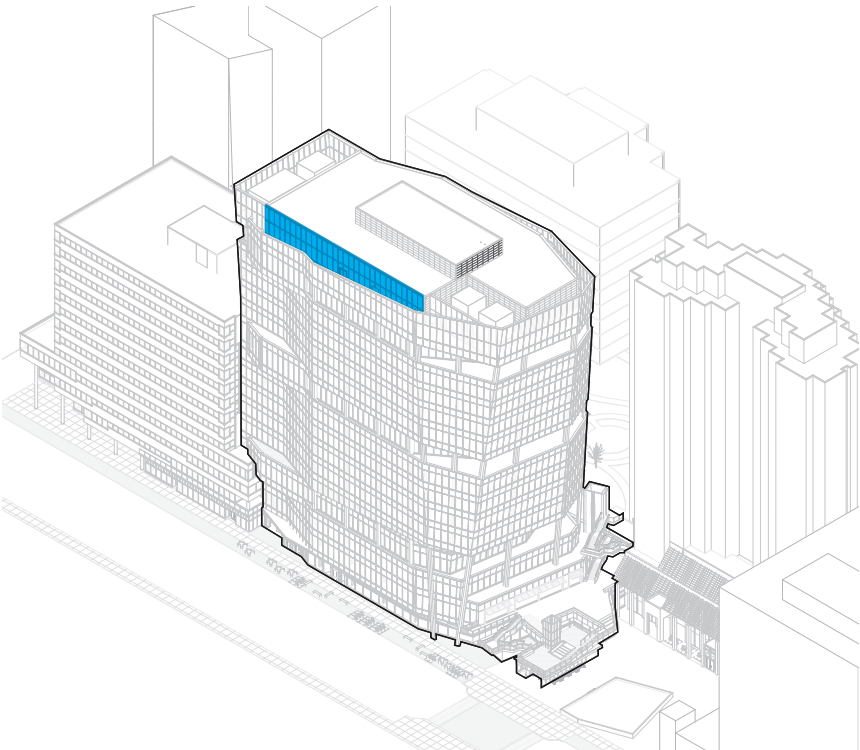


*Note: All material finishes are subject to further development during the design process. Materials and colors shown reflect design intent only, and shouldn't be considered final.

1.3.7 ENCLOSURE

TYPOLGY / FINISHES

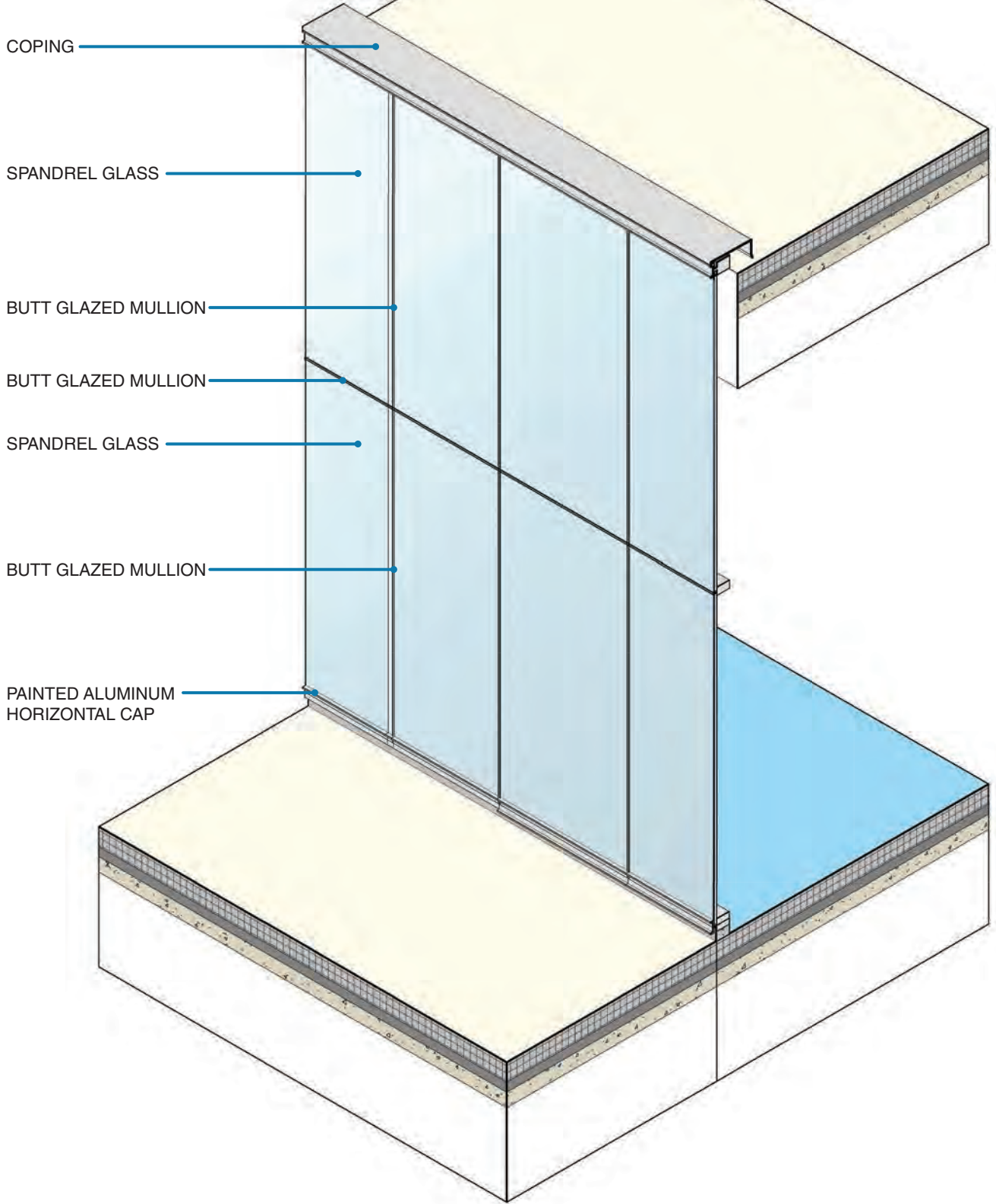
TYPE A4



- a) High Performance Vision Glass (VNE1-63 or similar)
- b) Painted Aluminum (PPG Pewter)
- c) Painted Aluminum (PPG Colonial White)

MATERIAL PALETTE / FINISH OPTIONS

TYPE A4



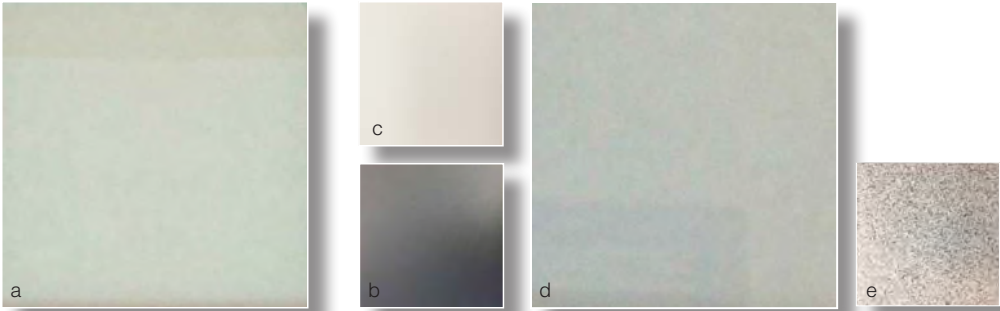
*Note: All material finishes are subject to further development during the design process. Materials and colors shown reflect design intent only, and shouldn't be considered final.

1.4.1 GROUND LEVEL

MAIN ENTRY



ENLARGED ELEVATION



- a) Low-Iron Vision Glass (VE24-85)
- b) Painted Aluminum (PPG Autumnwood)
- c) Painted Aluminum (PPG Mocha-Ccino)
- d) High Performance Vision Glass (VNE 1-63 or similar)
- e) Granite Stone Base - Mason - Thermal

MATERIAL PALETTE / FINISH OPTIONS

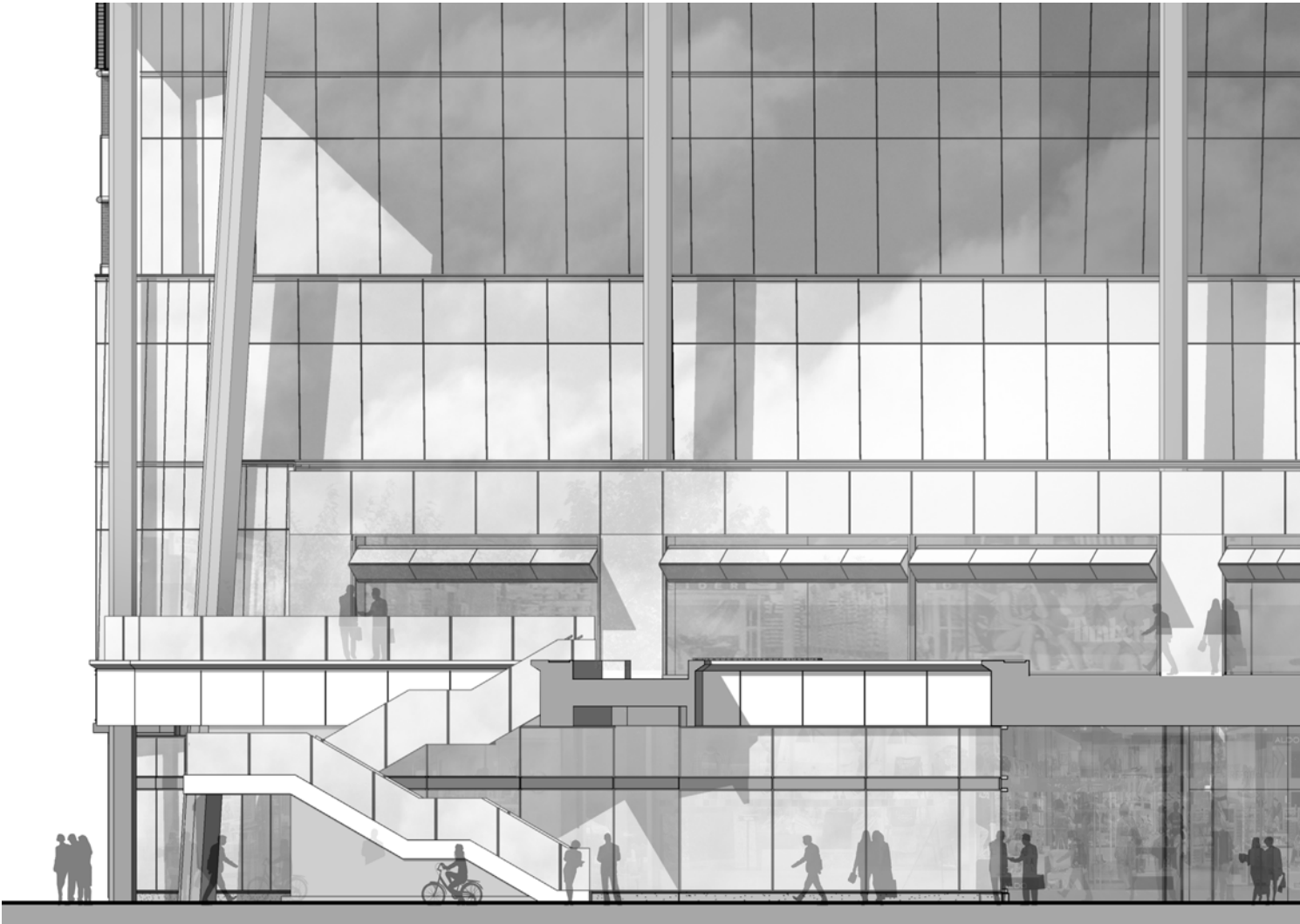


GROUND LEVEL PERSPECTIVE

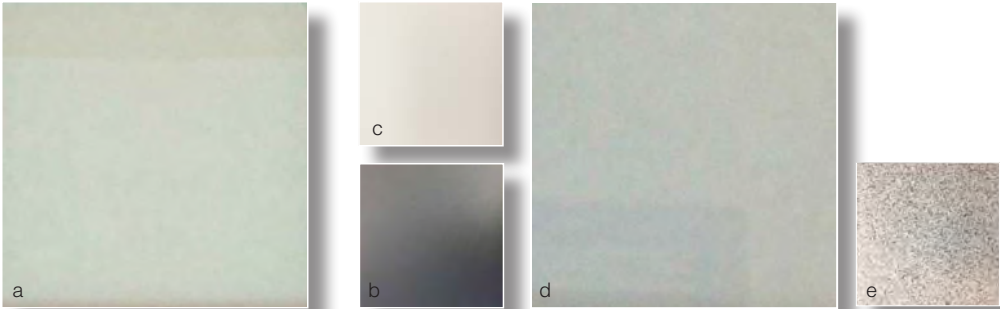
**Note: All material finishes are subject to further development during the design process. Materials and colors shown reflect design intent only, and shouldn't be considered final.*

1.4.1 GROUND LEVEL

MAIN ENTRY AT PLAZA



ENLARGED ELEVATION



- a) Low-Iron Vision Glass (VE24-85)
- b) Painted Aluminum (PPG Pewter)
- c) Painted Aluminum (PPG Colonial White)
- d) High Performance Vision Glass (VNE 1-63 or similar)
- e) Stone - Mason - Granite

MATERIAL PALETTE / FINISH OPTIONS



GROUND LEVEL PERSPECTIVE

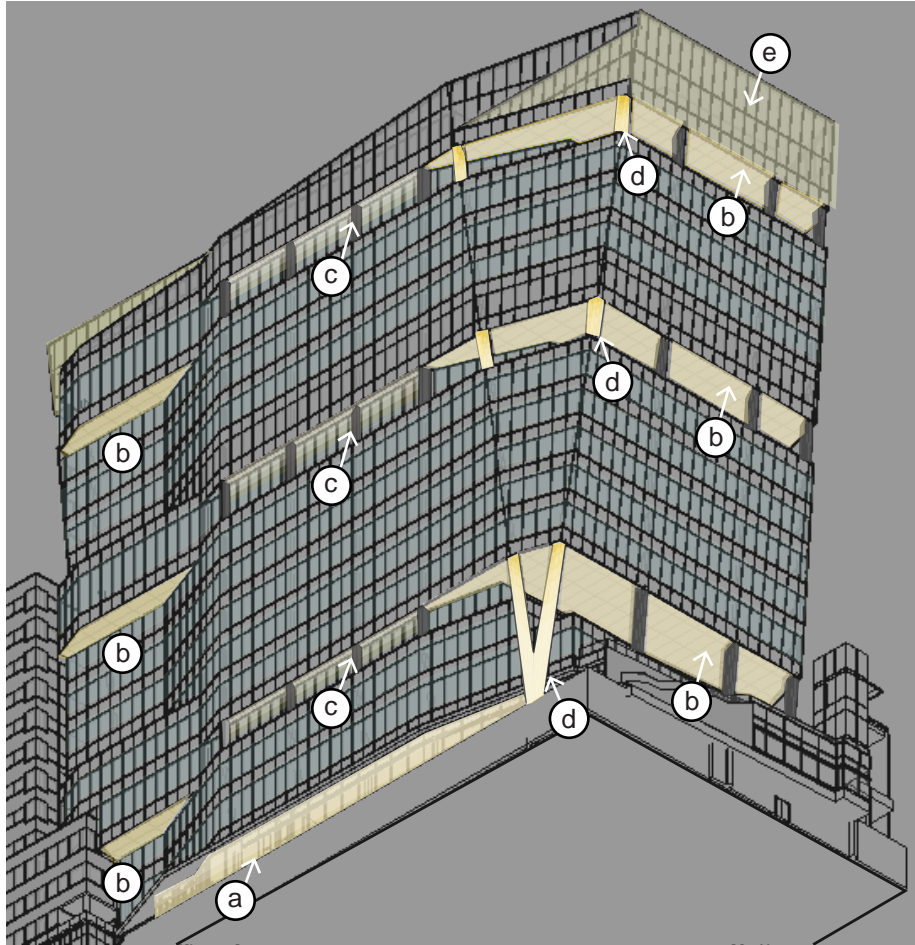
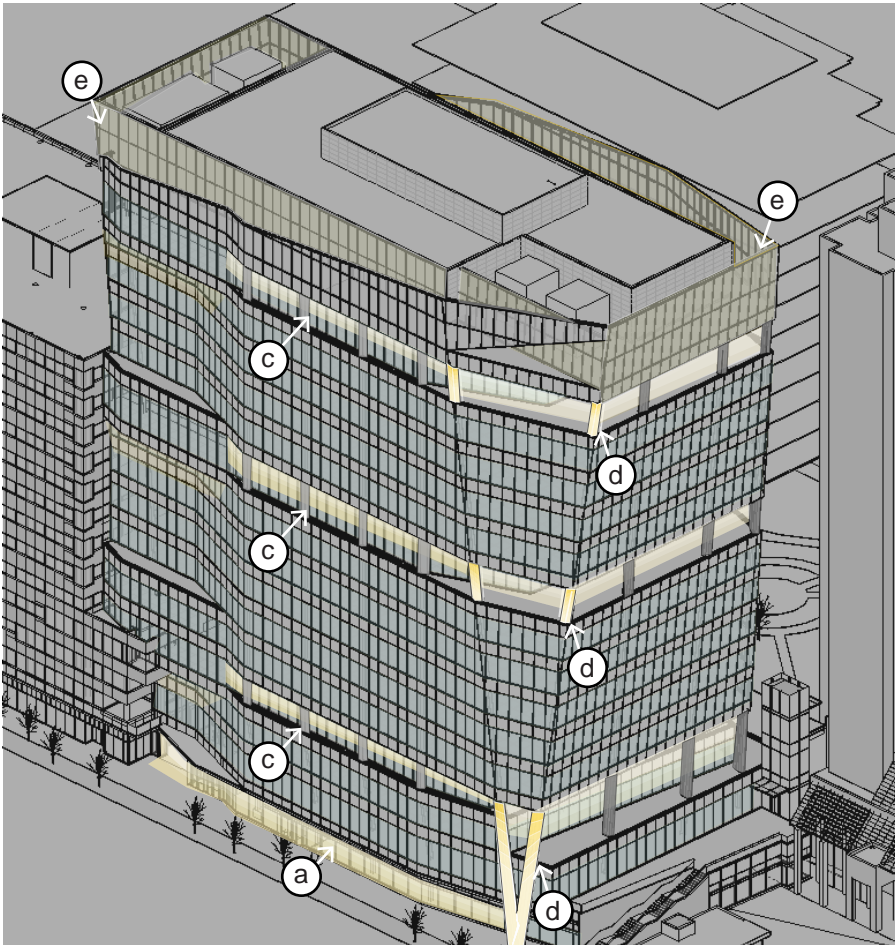
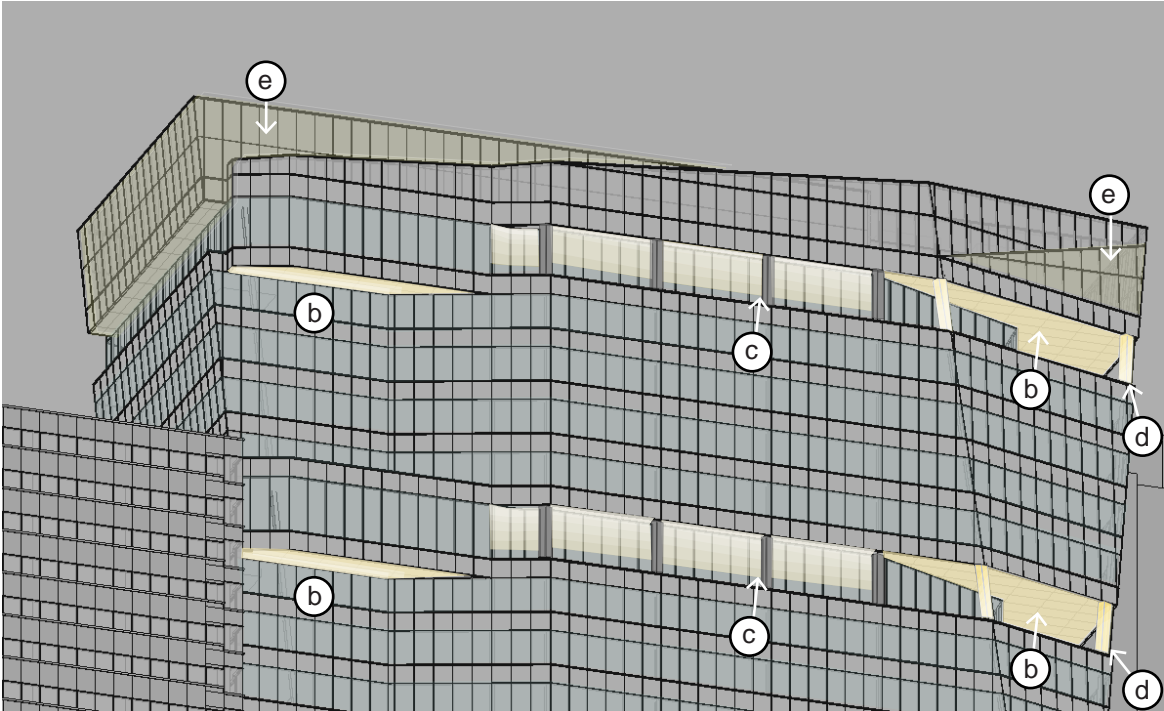
*Note: All material finishes are subject to further development during the design process. Materials and colors shown reflect design intent only, and shouldn't be considered final.

1.4.2 PEDESTRIAN AND VEHICULAR CIRCULATION



1.5 ARCHITECTURAL LIGHTING

POTENTIAL LIGHTING OPPORTUNITIES



- a. Ample amount of interior light spill from Active Use and Lobby spaces help to energize ground level during dusk and evening hours
- b. Uplit soffits
- c. Vertical columns seen in silhouette
- d. Slanted columns at chamfer are highlighted forcing the eye of the viewer upwards
- e. Softly backlit fritted glass at the top of the building emphasizes the fold of the facade and creates a contour shape like that of the columns

**Exterior lighting, where provided, will be dimmable

1.5 ARCHITECTURAL LIGHTING
PRECEDENT IMAGES



325 MAIN

DESIGN REVIEW SUBMISSION

SEPTEMBER 06, 2018



PICKARD CHILTON