

Source Info: Landworks Studio Inc.

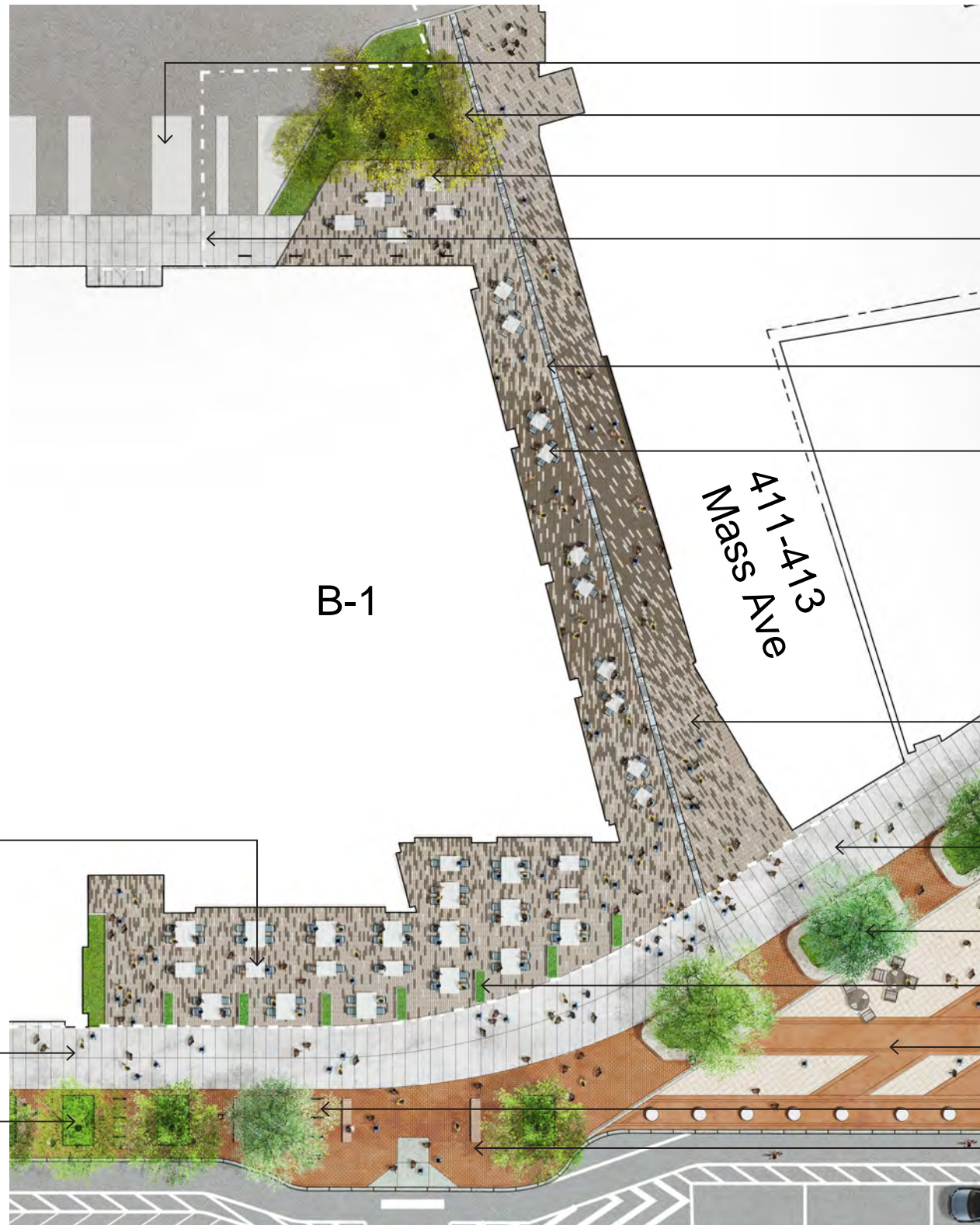


- Central Market and Setback (fig 1.15)
- Massachusetts Avenue Streetscape (fig 1.18)
- New Coolidge Place (fig 1.21)



Figure 1.15
Proposed Site Improvement Plan
-Key Plan

A UggZ A Ujlb
7Ua Vf]X[YzA UggUWi gYftc



- painted asphalt 'loading zone'
- 'birch grove' with understory planting
- small seating area
- flush curb pedestrian walkway
- ornamental trench drain
- movable cafe seating in retail corridor
- pavers
- 10' concrete sidewalk
- existing raised planters
- movable corten planters
- existing Lafayette Square
- bike racks at pedestrian bump out
- benches at pedestrian bump out

- movable seating in setback
- Mass. Ave . streetscape, see fig 1.18
- 6" raised planting bed

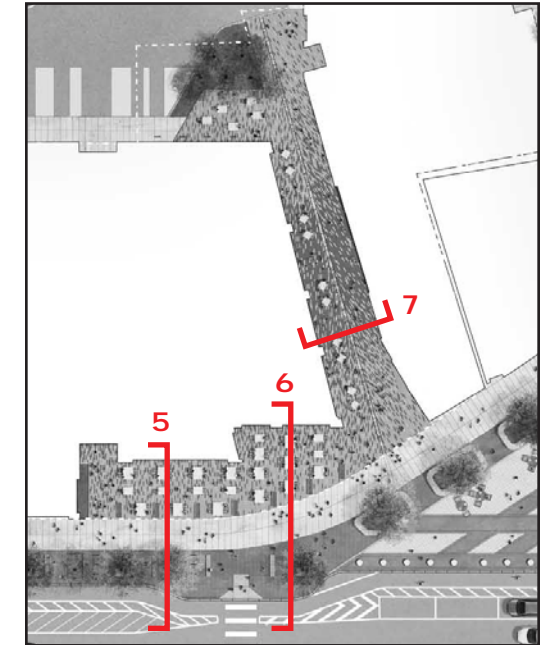
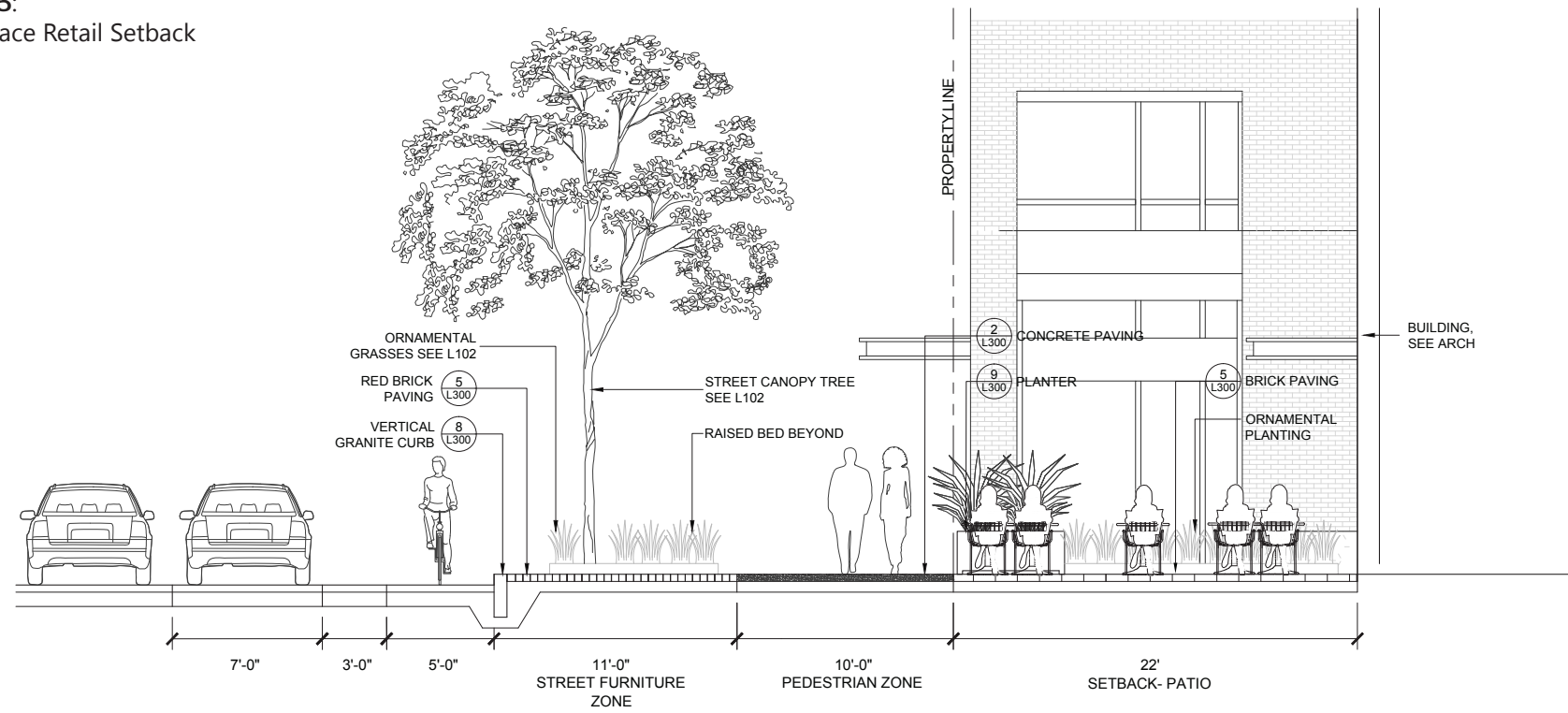
Source Info: Landworks Studio Inc.



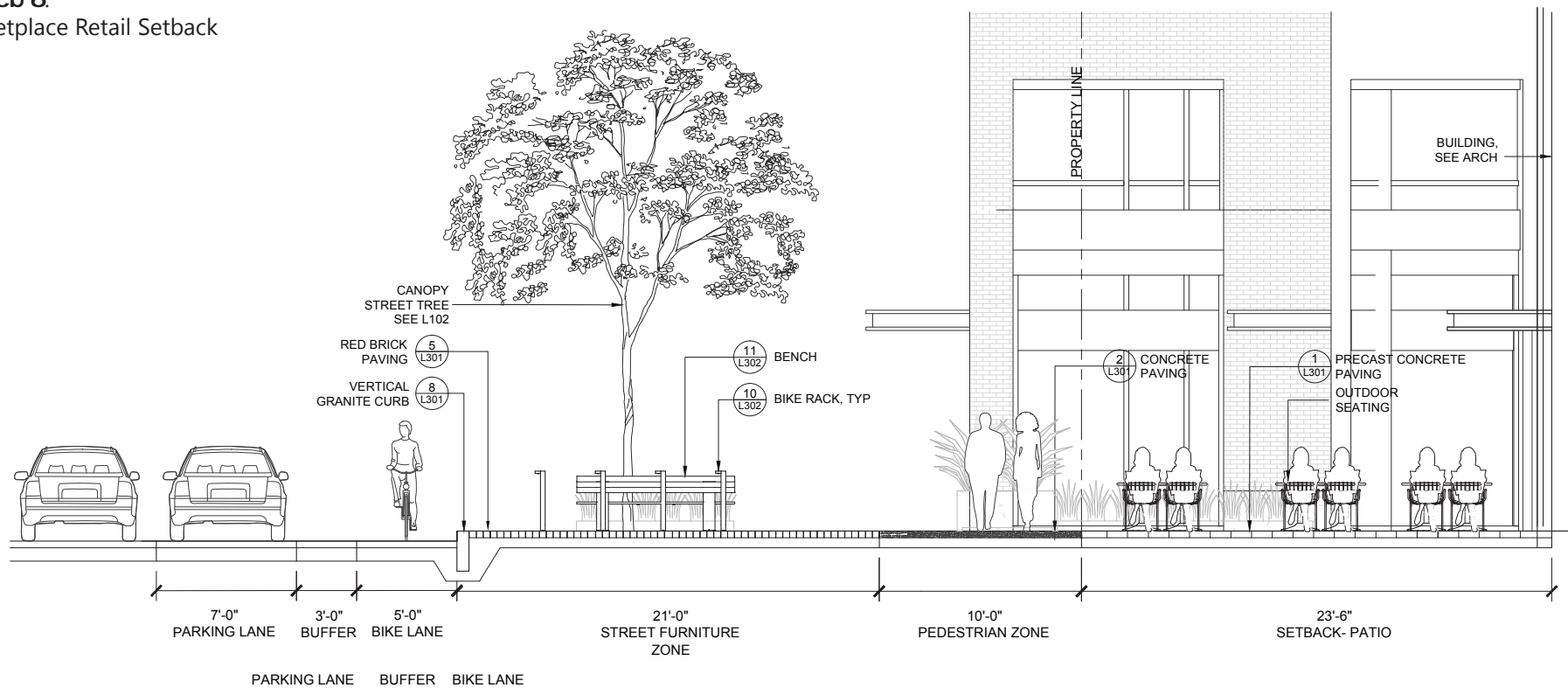
Figure 1.16
Central Market Plan

A UggZ A U]b
7Ua Vf]X[YzA UggUWi gYHc

GMcb 5:
Marketplace Retail Setback



GMcb 6:
Marketplace Retail Setback



Source Info: Landworks Studio Inc.

GMcb 7:
Central Market

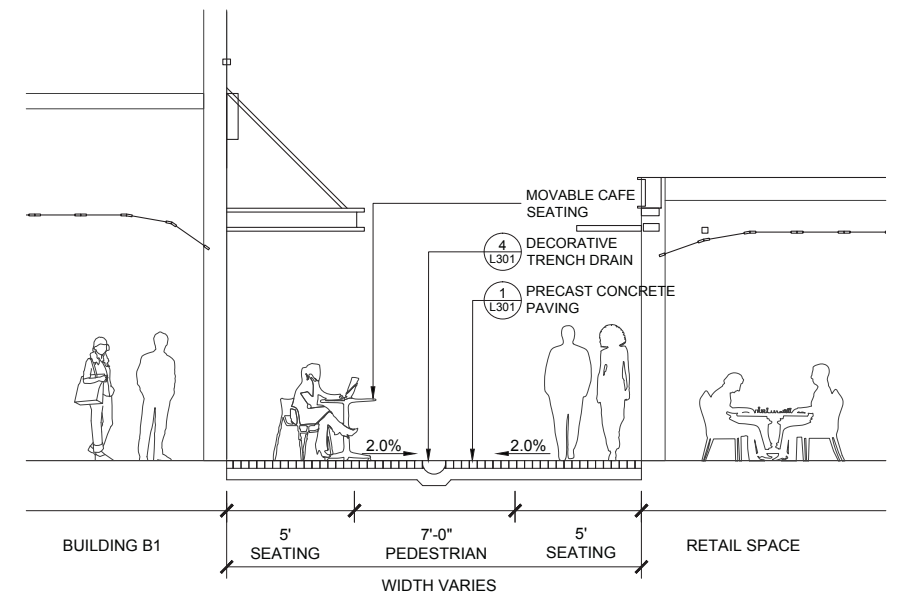


Figure 1.17
Central Market Sections

A UggZ A Ujlo
7Ua Vf]X[YzA UggUWi gYHtq



Prepared By: CBT Architects

Figure 1.18a

Central Market Perspective Rendering

A Uggž A Ujlo
7Ua Vf]X[YzA UggUWi gYHtc



Source Info: Landworks Studio Inc.



Figure 1.18b
Perspective Rendering
Setback Open Space Patio
A UggZ A Ujlo
7Ua Vf]X[YZA UggUWi gYHc

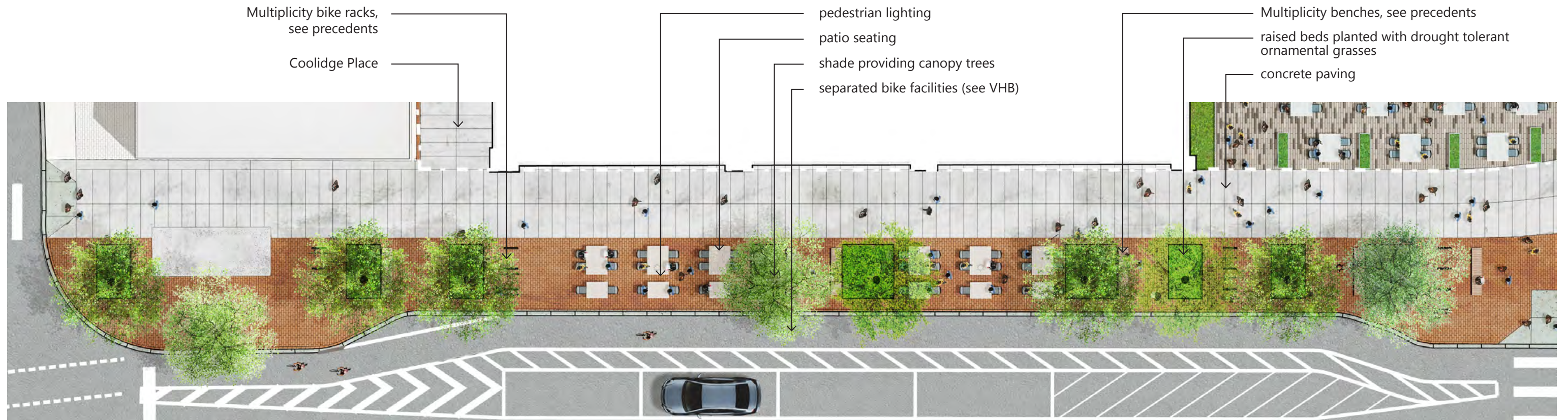


Source Info: Landworks Studio Inc.

mass + main

Figure 1.18c
Perspective Rendering
Setback Open Space Event

A UggZ A Ujlo
7Ua Vf]X[YZA UggUWi gYHc



Source Info: Landworks Studio Inc.

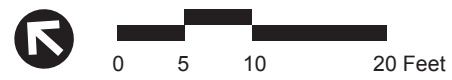
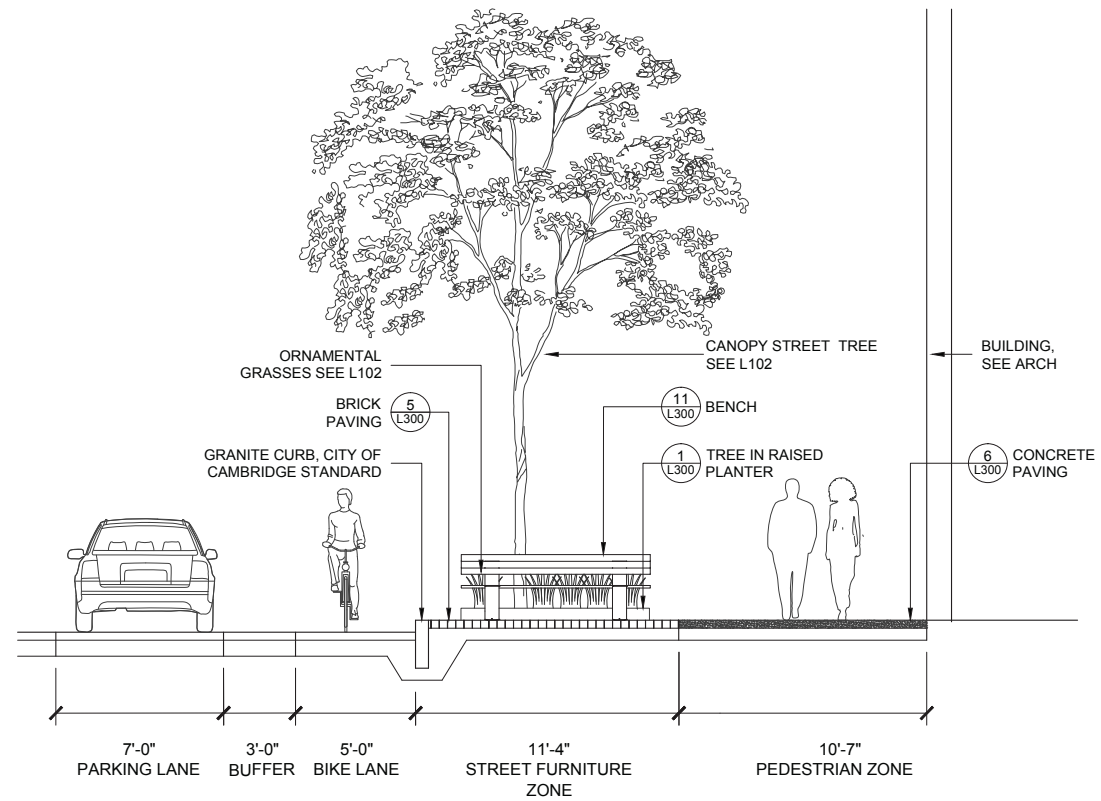


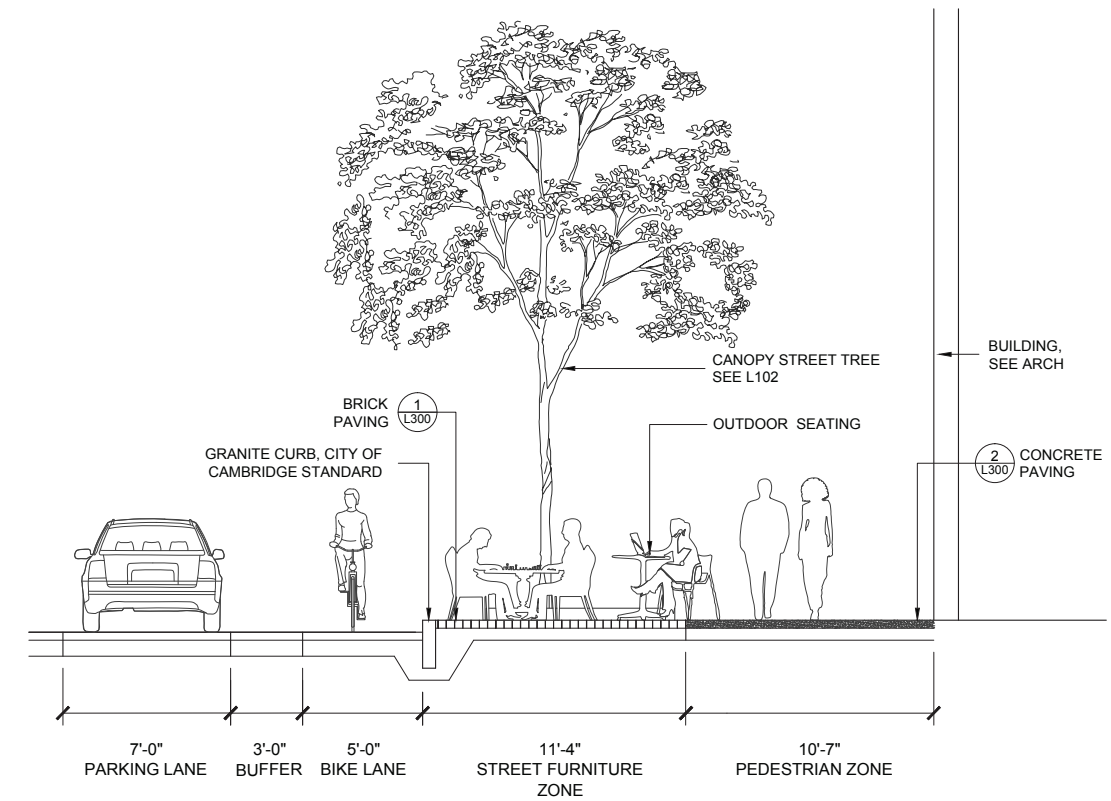
Figure 1.19
Mass Ave Streetscape
Site Improvement Plan

A UggZ A Ujlo
7Ua Vf]X[YZA UggUWi gYHc

GMcb 5:
Mass. Ave. streetscape section with fixed benches



GMcb 6:
Mass. Ave. streetscape section with movable cafe seating



Source Info: Landworks Studio Inc.

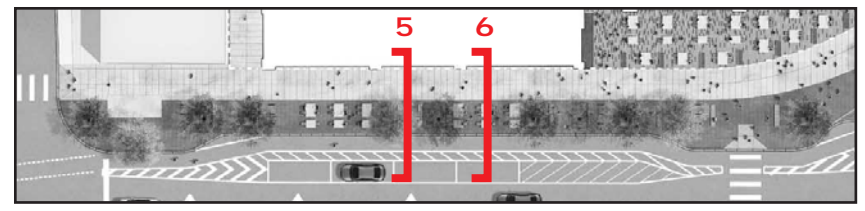


Figure 1.20
Mass Ave Streetscape
Sections

A UggZ A U]b
7Ua Vf]X[YzA UggUWi gYHt;



Source Info: Landworks Studio Inc.

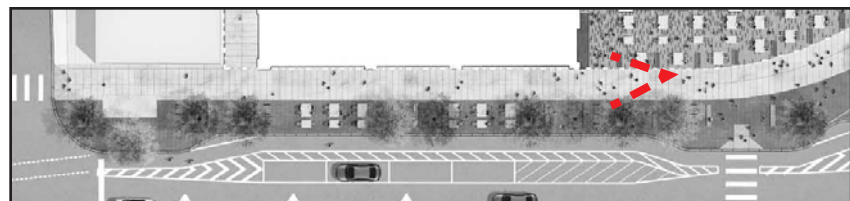


Figure 1.21
Perspective Rendering
Mass Ave Streetscape

A UggZ A Ujlo
7Ua Vf]X[YzA UggUWi gYHt;



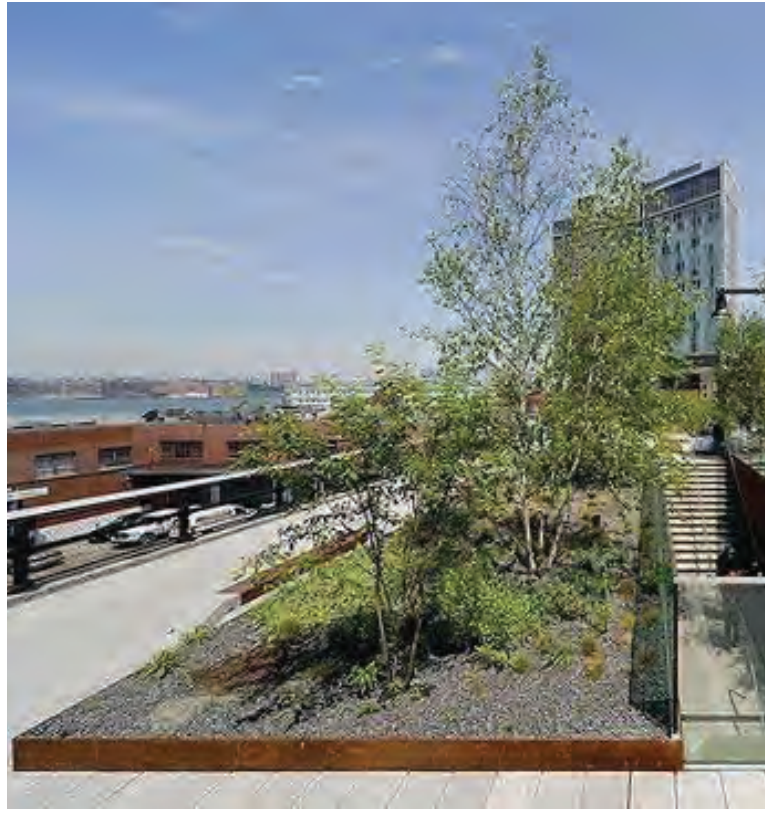
Source Info: Landworks Studio Inc.

- planting
- 6' yew hedge
- painted asphalt loading zone
- flush curb pedestrian walkway
- ramp to parking
- planting
- Mass Ave. Streetscape see fig 1.18



Figure 1.22
New Coolidge Place
Site Improvement Plan

A UggZ A U]b
7Ua Vf]X[YZA UggUWi gYHtg



Rasied corten beds



Movable corten planters



Rasied corten beds

Source Info: Landworks Studio Inc.



Figure 1.23a
Site Finishes
Corten Planter Edge and Planters

A UggZ A U]b
7Ua Vf]X[YZA UggUWi gYHc



Multiplicity Bike Rack
By Landscape Forms

Source Info: Landworks Studio Inc.



Multiplicity Bench By Landscape Forms



Multiplicity Bike Rack
By Landscape Forms



Multiplicity Bench
By Landscape Forms



Figure 1.23b
Site Finishes
Benches and Bike Racks

A UggZ A Ujlo
7Ua Vf]X[YZA UggUWi gYHc

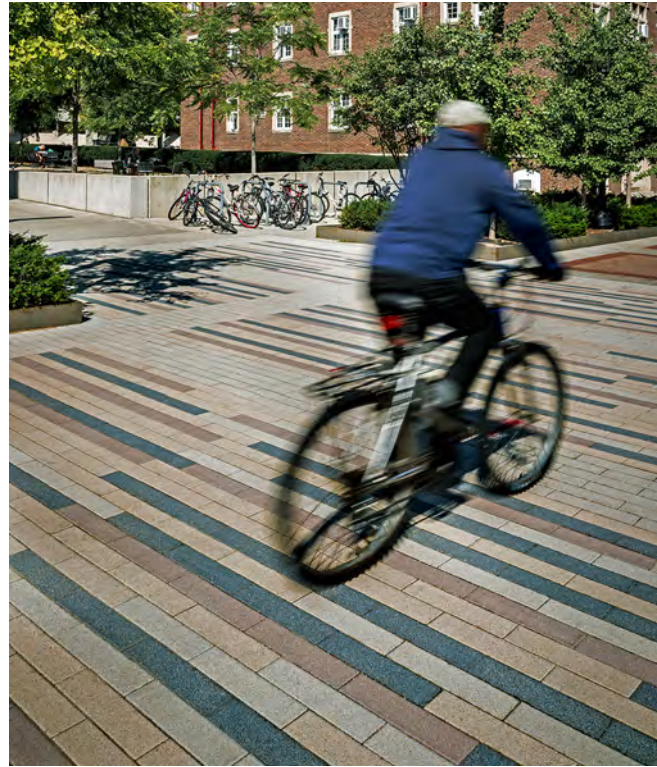
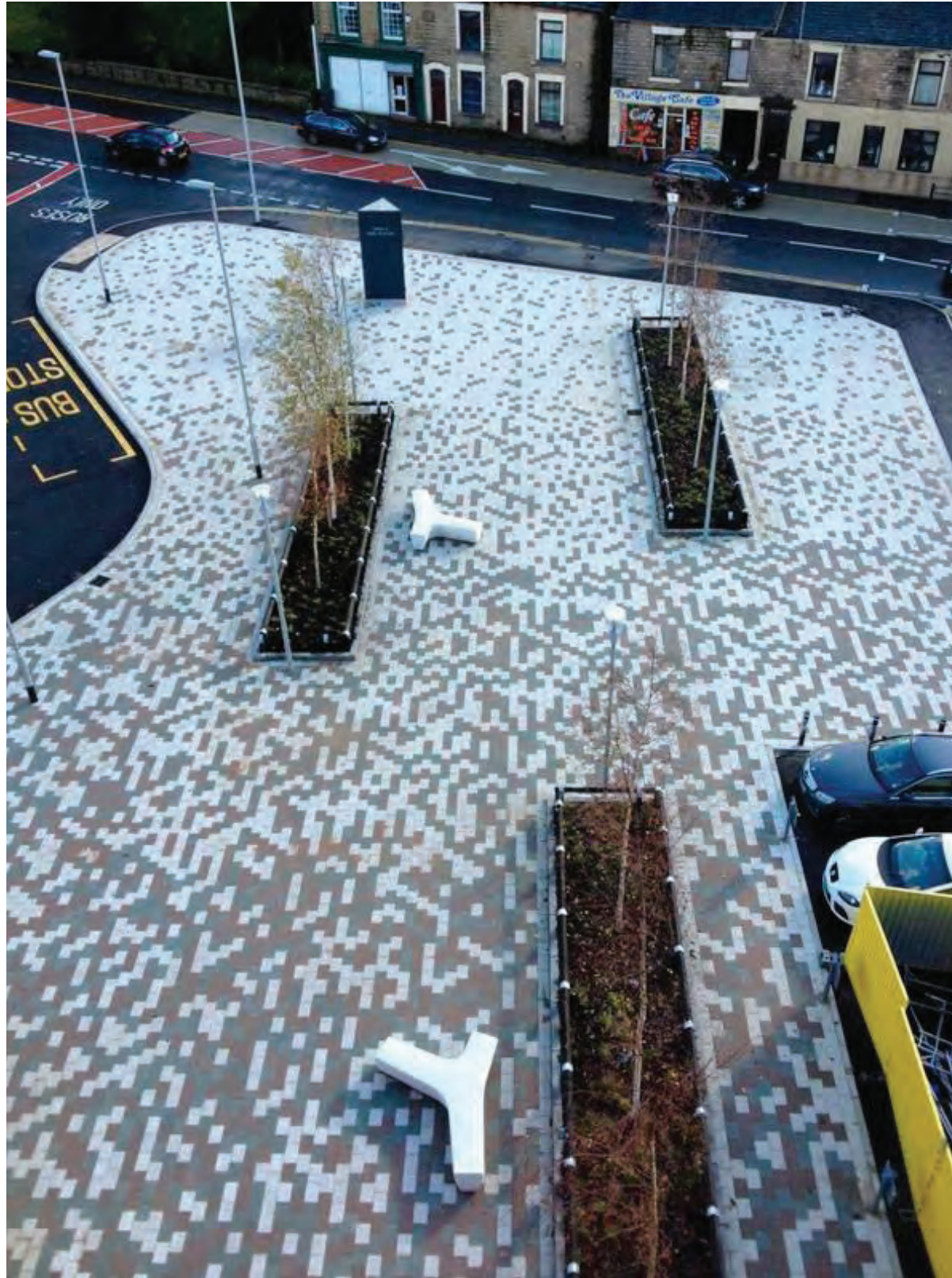


Source Info: Landworks Studio Inc.

mass + main

Figure 1.23c
Site Finishes
Ornamental Trench Drain

A UggZ A Ujlo
7Ua Vf]X[YzA UggUWi gYHc



Source Info: Landworks Studio Inc.

mass + main

Figure 1.23d
Site Finishes
Paving

A UggZ A Ujlb
7Ua Vf]X[YZA UggUWi gYHc



- SERVICE + RETAIL
- FAST-ORDER FOOD
- CASUAL DINING
- SMALL-FORMAT GOODS/FOOD

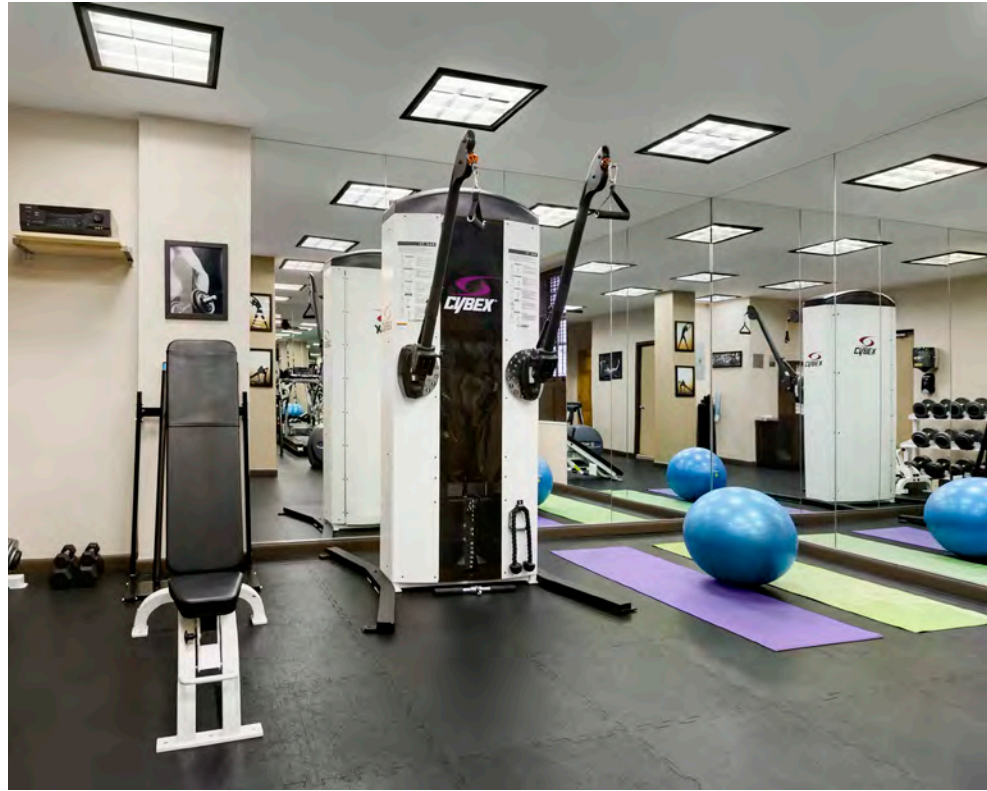


Prepared By: CBT Architects and Graffi oSP

Figure 1.24

Proposed Retail Plan

Mass+Main
Cambridge, Massachusetts



Prepared By: CBT Architects and Graffi oSP

Figure 1.25a

Retail Precedent Images - Service Retail

A Uggž A Ujlo
7Ua VfjX[YžA UggUWi gYHc



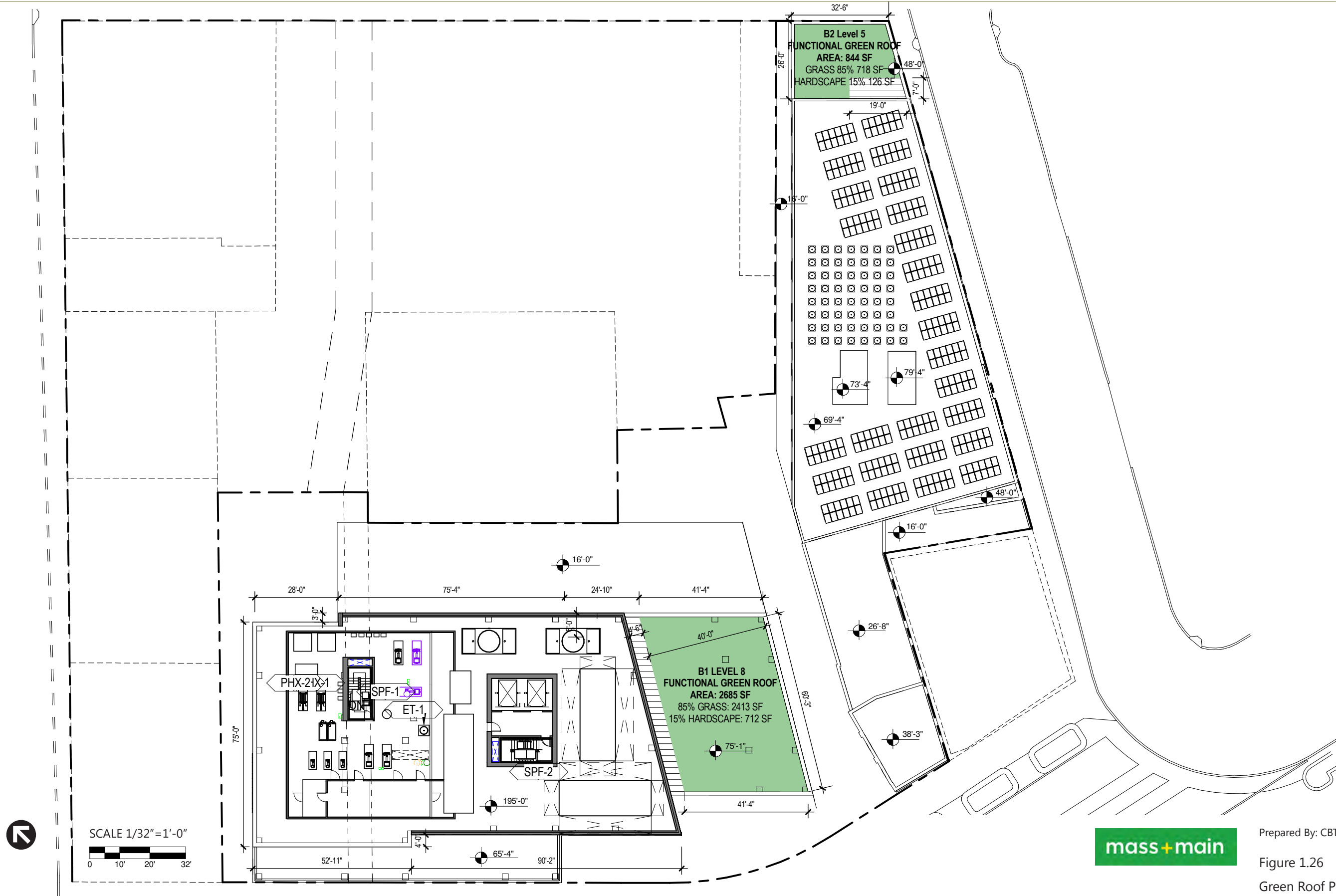
mass+main

Prepared By: CBT Architects and Graffi oSP

Figure 1.25b

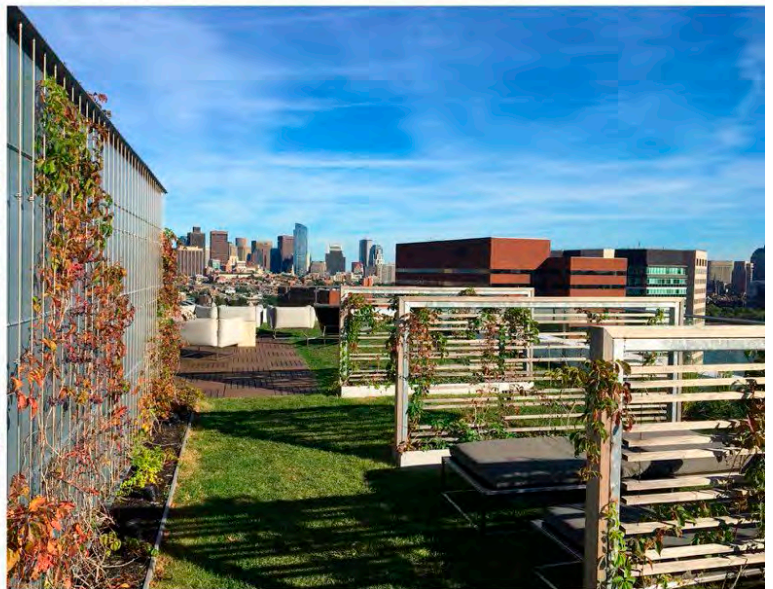
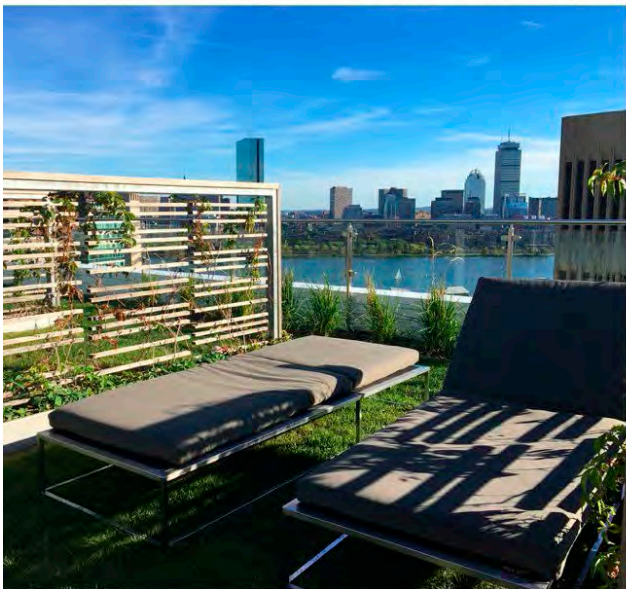
Retail Precedent Imgs - Food & Beverage

A Ugg'Z A Ujlo
7Ua Vf]X[YzA UggUWi gYHc



Prepared By: CBT Architects

Figure 1.26
Green Roof Plan



Source: Twining Properties



Figure 1.27
Green Roof Precedent Images

Mass + Main Project
Cambridge, Massachusetts