



**KING OPEN/CAMBRIDGE STREET UPPER  
SCHOOLS & COMMUNITY COMPLEX**

WILLIAM RAWN ASSOCIATES | Architects, Inc. + **ARROWSTREET**

**ATTACHMENT A**  
**12/19/2016 PRESENTATION MATERIALS**

**1**

**REFERENCES**

CITY OF CAMBRIDGE ENGINEERING DEPARTMENT  
 BOOK 82 PAGE 94  
 BOOK 94 PAGE 139  
 BOOK 114 PAGE 105  
 BOOK 154 PAGE 88  
 BOOK 155 PAGE 61  
 BOOK 156 PAGE 77  
 BOOK 180 PAGE 8

MIDDLESEX COUNTY REGISTRY OF DEEDS  
 PLAN 882 OF 1996  
 BOOK 2242 PAGE 76 (DONNELLY PARK)

MASSACHUSETTS LAND COURT  
 LCC 18806A

MASSACHUSETTS LEGISLATURE  
 ACTS 1955 CHAPTER 49 (SCHOOL PARCEL)  
 ACTS 1994 CHAPTER 209

SHEET 1 OF 2  
 SHEET 2 OF 2

**NOTES:**

- 1) BENCH MARK INFORMATION:  
 TBM-216: CHISELED SQUARE ON THE LEFT OUTER CORNER OF THE TOP CONCRETE STEP AT #81-803 CAMBRIDGE STREET, AS SHOWN HEREON. ELEVATION = 22.91  
 TEMPORARY BENCH MARKS SET:  
 TBM-F1: X-CUT SET ON HYDRANT BOLT BETWEEN "E" AND "L" IN MUELLER, 2.4' ABOVE GRADE, ON THE NORTHERLY SIDE OF PALERMO STREET AT THE INTERSECTION OF THE WESTERLY SIDE OF WILLOW STREET, AS SHOWN HEREON. ELEVATION = 23.40  
 TBM-F2: X-CUT SET ON LEFT HYDRANT BOLT OVER MAIN OUTLET, 2.4' ABOVE GRADE, ON THE WESTERLY SIDE OF BERKSHIRE STREET, 140' SOUTH OF MARCELLA STREET, AS SHOWN HEREON. ELEVATION = 22.93  
 TBM-F3: X-CUT SET ON HYDRANT BOLT OVER MAIN OUTLET, 1.7' ABOVE GRADE, ON THE NORTHERLY SIDE OF CAMBRIDGE STREET, 180' EAST OF HARDING STREET, AS SHOWN HEREON. ELEVATION = 22.18  
 TBM-F4: X-CUT SET ON LEFT HYDRANT BOLT OVER MAIN OUTLET, 2.2' ABOVE GRADE, ON THE SOUTHERLY SIDE OF CAMBRIDGE STREET AT THE INTERSECTION OF THE EASTERLY SIDE OF WILLOW STREET, AS SHOWN HEREON. ELEVATION = 22.75
- 2) ELEVATIONS REFER TO CITY OF CAMBRIDGE BASE.
- 3) CONTOUR INTERVAL EQUALS ONE (1) FOOT.
- 4) INTERIOR LINES WERE TAKEN FROM A PLAN PREPARED BY WENDELL H. MASON ENTITLED "PLAN OF LAND FOR EASTERN CAMBRIDGE YOUTH CENTER IN CAMBRIDGE, MASS." DATED AUGUST 29, 1994 WHICH WAS PROVIDED BY THE CITY OF CAMBRIDGE DEPARTMENT OF PUBLIC WORKS.
- 5) BY GRAPHIC PLOTTING ONLY, THE PARCEL SHOWN HEREON LIES WITHIN A ZONE "X" (UNSHADED), AN AREA OUTSIDE OF THE 0.2% ANNUAL CHANCE FLOOD, AS SHOWN ON THE FEDERAL EMERGENCY MANAGEMENT AGENCY (FEMA) FLOOD INSURANCE RATE MAP (FIRM) FOR MIDDLESEX COUNTY, MASSACHUSETTS, MAP NUMBER 25017C0577E, CITY OF CAMBRIDGE COMMUNITY NUMBER 250186, PANEL NUMBER 0577, HAVING AN EFFECTIVE DATE OF JUNE 4, 2010.
- 6) UTILITY INFORMATION SHOWN IS BASED ON BOTH A FIELD SURVEY AND PLANS OF RECORD. THE LOCATIONS OF UNDERGROUND PIPES AND CONDUITS HAVE BEEN DETERMINED FROM THE AFOREMENTIONED RECORD PLANS AND ARE APPROXIMATE ONLY. WE CANNOT ASSUME RESPONSIBILITY FOR DAMAGES INCURRED AS A RESULT OF UTILITIES THAT ARE OMITTED OR INACCURATELY SHOWN ON SAID RECORD PLANS. SINCE SUB-SURFACE UTILITIES CANNOT BE VISIBLY VERIFIED, BEFORE PLANNING FUTURE CONNECTIONS, THE PROPER UTILITY ENGINEERING DEPARTMENT SHOULD BE CONSULTED AND THE ACTUAL LOCATION OF SUB-SURFACE STRUCTURES SHOULD BE DETERMINED IN THE FIELD. CALL, TOLL FREE, THE DIG SAFE CALL CENTER AT 1-888-544-2233 SEVENTY-TWO HOURS PRIOR TO EXCAVATION.
- 7) THIS DOCUMENT IS AN INSTRUMENT OF SERVICE OF FELDMAN LAND SURVEYORS ISSUED TO OUR CLIENT FOR PURPOSES RELATED DIRECTLY AND SOLELY TO FELDMAN LAND SURVEYORS' SCOPE OF SERVICES UNDER CONTRACT TO OUR CLIENT FOR THIS PROJECT. ANY USE OR REUSE OF THIS DOCUMENT FOR ANY REASON BY ANY PARTY FOR PURPOSES UNRELATED DIRECTLY AND SOLELY TO SAID CONTRACT SHALL BE AT THE USER'S SOLE AND EXCLUSIVE RISK AND LIABILITY, INCLUDING LIABILITY FOR VIOLATION OF COPYRIGHT LAWS, UNLESS WRITTEN CONSENT IS PROVIDED BY FELDMAN LAND SURVEYORS.
- 8) INTENTIONALLY DELETED.
- 9) SUBSURFACE WATER INFORMATION PLOTTED FROM CITY OF CAMBRIDGE GIS DATA.
- 10) "\*" INFORMATION PROVIDED BY CITY OF CAMBRIDGE WATER DEPARTMENT.
- 11) ZONING LINE PLOTTED FROM CITY OF CAMBRIDGE ORDINANCE NO. 1193, PARAGRAPH V ITEM 9 (550 FEET FROM THE NORTHEASTERLY SIDELINE OF YORK STREET).
- 12) BUILDING HEIGHT REPRESENTS HEIGHT OF STRUCTURE VISIBLE FROM STREET LEVEL.

I CERTIFY THAT THIS PLAN IS BASED ON AN ACTUAL FIELD SURVEY.

7-8-2016	EXTENDED SURVEY LIMIT (SEE SHEET 2)
5-24-2016	PROPERTY LINES REVISED
5-17-2016	ADDITIONAL INVERT, BUILDING HEIGHTS & ZONING INFORMATION ADDED
3-10-2016	SEE NOTE 10

**PARTIAL EXISTING CONDITIONS  
 PLAN OF LAND  
 "KING OPEN SCHOOL"  
 850 CAMBRIDGE STREET  
 CAMBRIDGE, MASS.**

FELDMAN LAND SURVEYORS APRIL 24, 2015  
 112 SHAWMUT AVENUE PHONE: (617)357-9740  
 BOSTON, MASS. 02118 www.feldmansurveyors.com

SCALE: 1"=30'

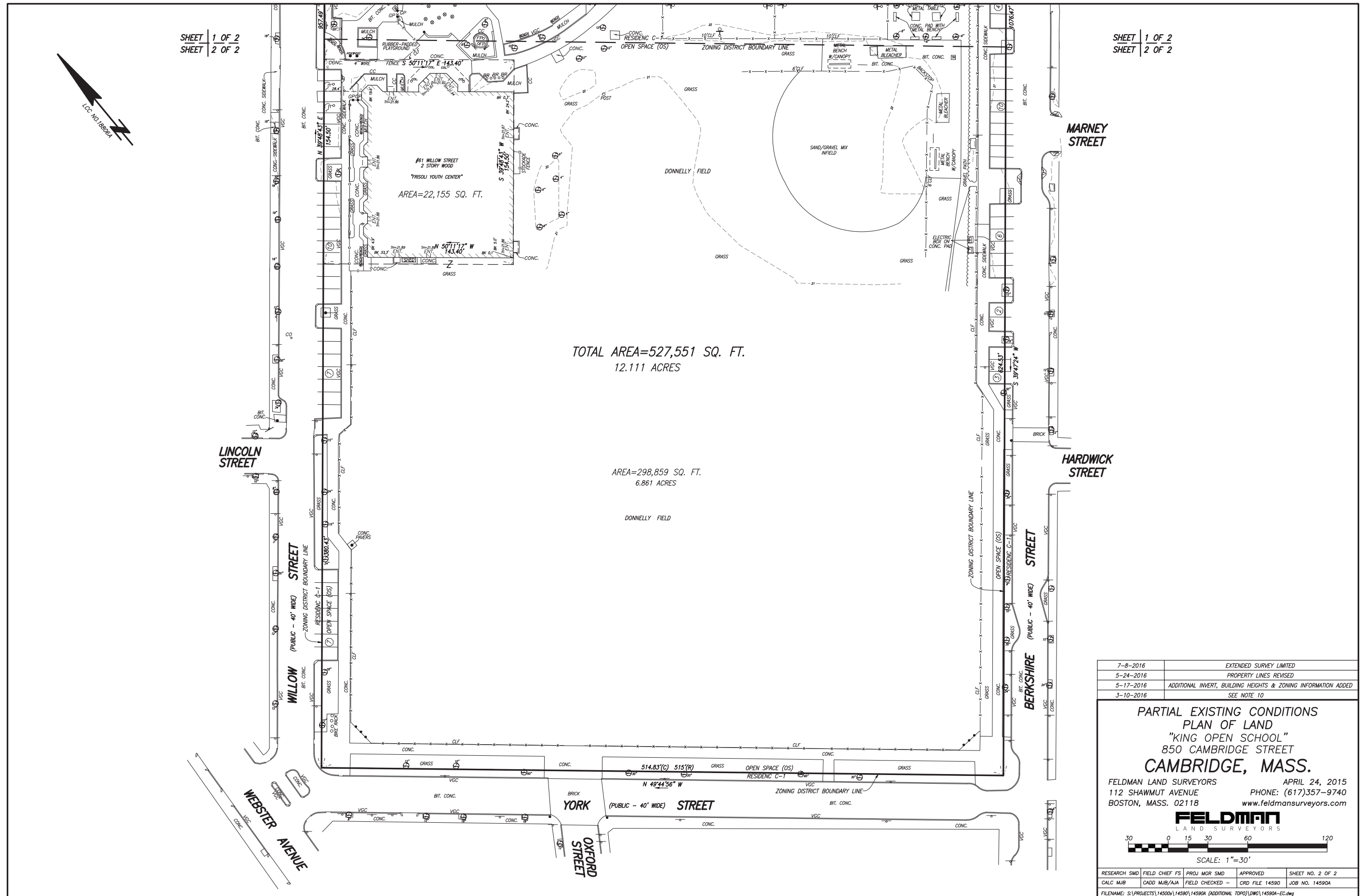
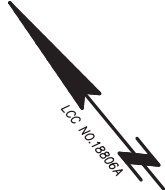
RESEARCH SMD	FIELD CHIEF FS	PROJ MGR SMD	APPROVED	SHEET NO. 1 OF 2
CALC MJB	CADD MJB/AJA	FIELD CHECKED -	CRD FILE 14590	JOB NO. 14590A

FILENAME: S:\PROJECTS\14500\14590\14590A (ADDITIONAL TOPO)\DWG\14590A-EC.dwg

- LEGEND**
- GUY WIRE
  - SEWER MANHOLE
  - DRAIN MANHOLE
  - ELECTRIC MANHOLE
  - TELEPHONE MANHOLE
  - CABLE TV MANHOLE
  - MANHOLE
  - HYDRANT
  - WATER SHUT OFF/WATER GATE
  - GAS SHUT OFF/GAS GATE
  - CATCH BASIN
  - ROUND CATCH BASIN
  - D-FRAME CATCH BASIN
  - TRAFFIC SIGNAL
  - GUY POLE
  - UTILITY POLE
  - LIGHT POLE
  - ELECTRIC HANDHOLE
  - BOLLARD
  - SIGN
  - PM - PARKING METER
  - FP - FLAG POLE
  - ECB - EMERGENCY CALL BOX
  - BR - BIKE RACK
  - FA - FIRE ALARM
  - RD - ROOF DRAIN
  - BORING
  - STAND PIPE/SAMESE CONNECTION
  - UTILITY POLE W/ LIGHT
  - TRASH RECEPTACLE
  - BASKETBALL GOAL
  - HANICAP PARKING SPACE
  - DECIDUOUS TREE
  - CONIFEROUS TREE
  - BUSH
  - SHRUB
  - INTENTIONALLY DELETED
  - HANICAP RAMP
  - GP - GATE POST
  - IRRIGATION CONTROL VALVE
  - CURB RETURN
  - NUMBER OF PARKING SPACES
  - SPRINKLER HEAD
  - BC - BOTTOM OF CURB
  - BCB - BIT. CONC. BERM
  - BIT - BITUMINOUS
  - BK - BACK
  - BS - BOTTOM OF STEPS
  - BW - BOTTOM OF WALL
  - (C) - CALCULATED
  - CC - CONCRETE CURB
  - CLF - CHAIN LINK FENCE
  - CONC - CONCRETE
  - ENT - ENTRANCE
  - FFE - FINISH FLOOR ELEVATION
  - FGC - FLUSH GRANITE CURB
  - GRAN - GRANITE
  - I= - INVERT ELEVATION
  - L= - LENGTH
  - LOC - LAND COURT CASE
  - LST - LANDSCAPE TIMBER
  - M&S - MULCH & SHRUBS
  - OV - OVER
  - RW - RIM ELEVATION
  - (R) - RECORD
  - SQ. FT. - SQUARE FEET
  - STF - STOCKADE FENCE
  - T= - TOP
  - TBM - TEMPORARY BENCH MARK
  - TC - TOP OF CURB
  - TH - THRESHOLD
  - TS - TOP OF STEPS
  - VGC - VERTICAL GRANITE CURB
  - WF - WOOD FENCE
  - I= - INVERT ELEVATION
  - TR= - CENTERLINE OF TROUGH
  - TT= - TOP OF TRAP
  - FLD= - FULL OF DEBRIS
  - N.V.P. - NO VISIBLE PIPE
  - IMACC - INACCESSIBLE
  - N.T.S. - NOT TO SCALE
  - GM - GAS METER
  - AD - AREA DRAIN
  - FF - FUEL FILL
  - SQ. FT. - SQUARE FEET
  - BK - BACK
  - BH - BUILDING HEIGHT
  - C - CABLE TELEVISION
  - CS - COMBINED SEWER
  - D - DRAIN
  - E - ELECTRIC
  - G - GAS
  - OHW - OVERHEAD WIRES
  - S - SEWER
  - T - TELEPHONE
  - W - WATER
  - 12"(C) - PIPE SIZE AND MATERIAL
  - X - METAL FENCE
  - W - WOOD FENCE
  - E - EDGE OF WOODS

SHEET 1 OF 2  
 SHEET 2 OF 2





7-8-2016	EXTENDED SURVEY LIMITED
5-24-2016	PROPERTY LINES REVISED
5-17-2016	ADDITIONAL INVERT, BUILDING HEIGHTS & ZONING INFORMATION ADDED
3-10-2016	SEE NOTE 10

PARTIAL EXISTING CONDITIONS  
PLAN OF LAND  
"KING OPEN SCHOOL"  
850 CAMBRIDGE STREET  
CAMBRIDGE, MASS.

FELDMAN LAND SURVEYORS APRIL 24, 2015  
112 SHAWMUT AVENUE PHONE: (617)357-9740  
BOSTON, MASS. 02118 www.feldmansurveyors.com

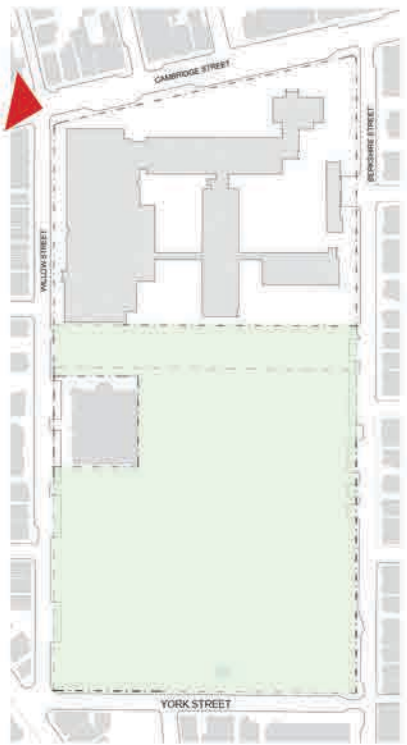
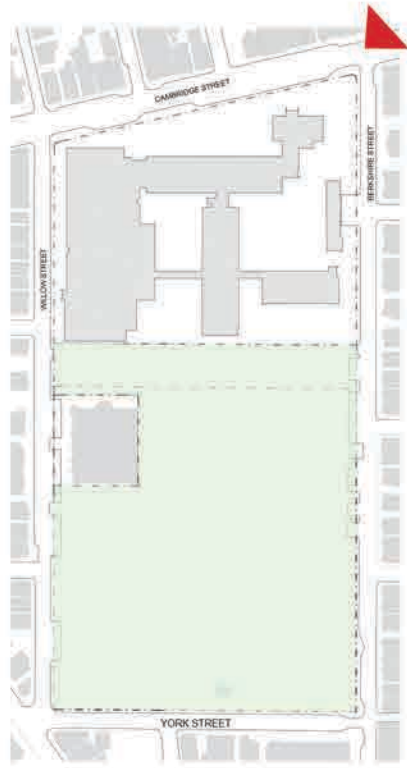
**FELDMAN**  
LAND SURVEYORS

SCALE: 1"=30'

RESEARCH SMD	FIELD CHIEF FS	PROJ MGR SMD	APPROVED	SHEET NO. 2 OF 2
CALC MJB	CADD MJB/AJA	FIELD CHECKED -	CRD FILE 14590	JOB NO. 14590A

FILENAME: S:\PROJECTS\14590\14590A (ADDITIONAL TOPO)\LOW\14590A-EC.dwg



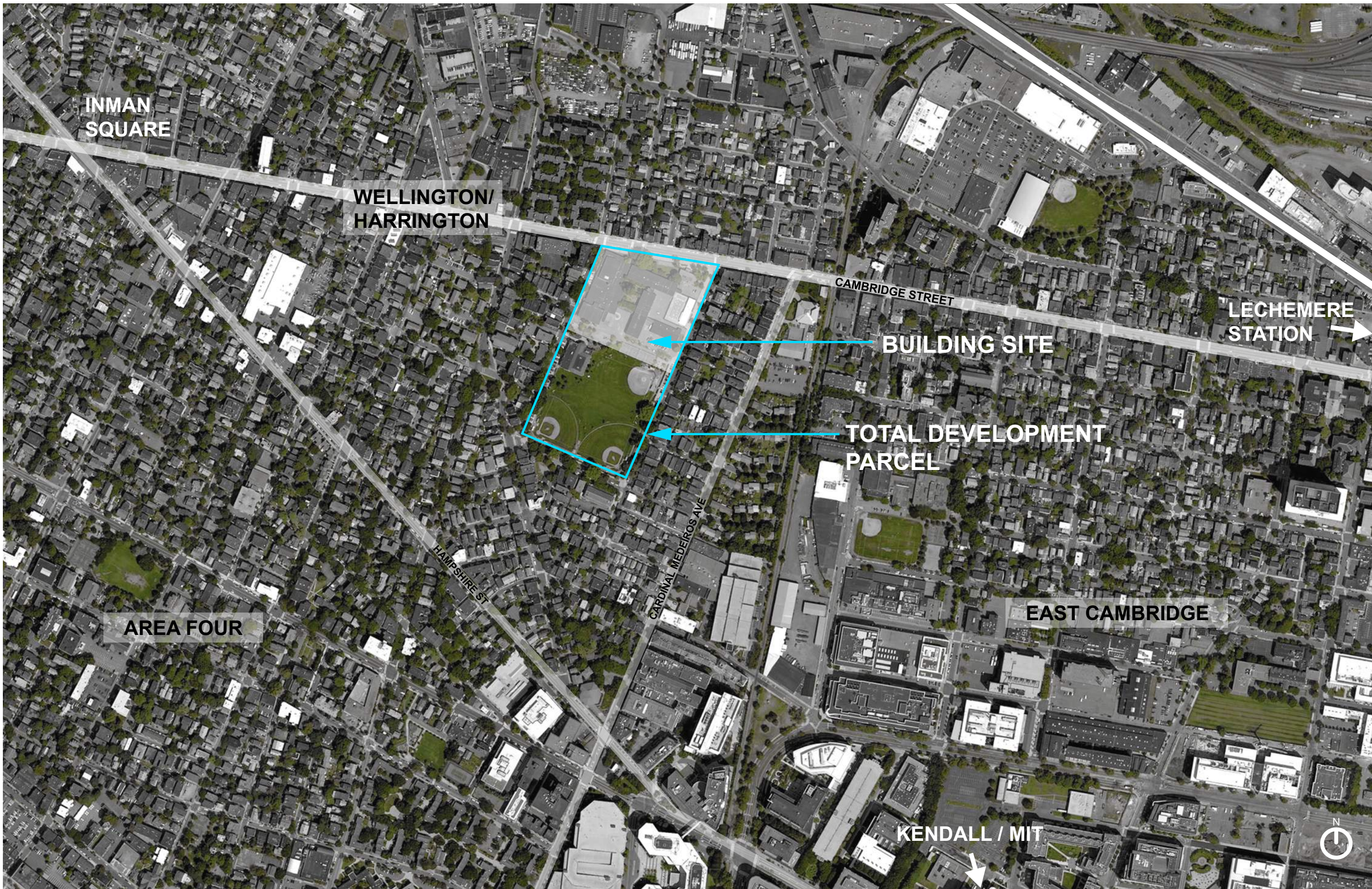


**KING OPEN/CAMBRIDGE STREET UPPER  
SCHOOLS & COMMUNITY COMPLEX**

**EXISTING CONDITIONS  
PHOTOGRAPHS**

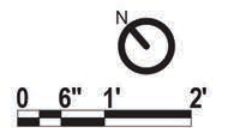


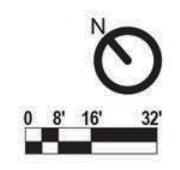






**KING OPEN/CAMBRIDGE STREET UPPER  
SCHOOLS & COMMUNITY COMPLEX**





**KING OPEN/CAMBRIDGE STREET UPPER  
SCHOOLS & COMMUNITY COMPLEX**

