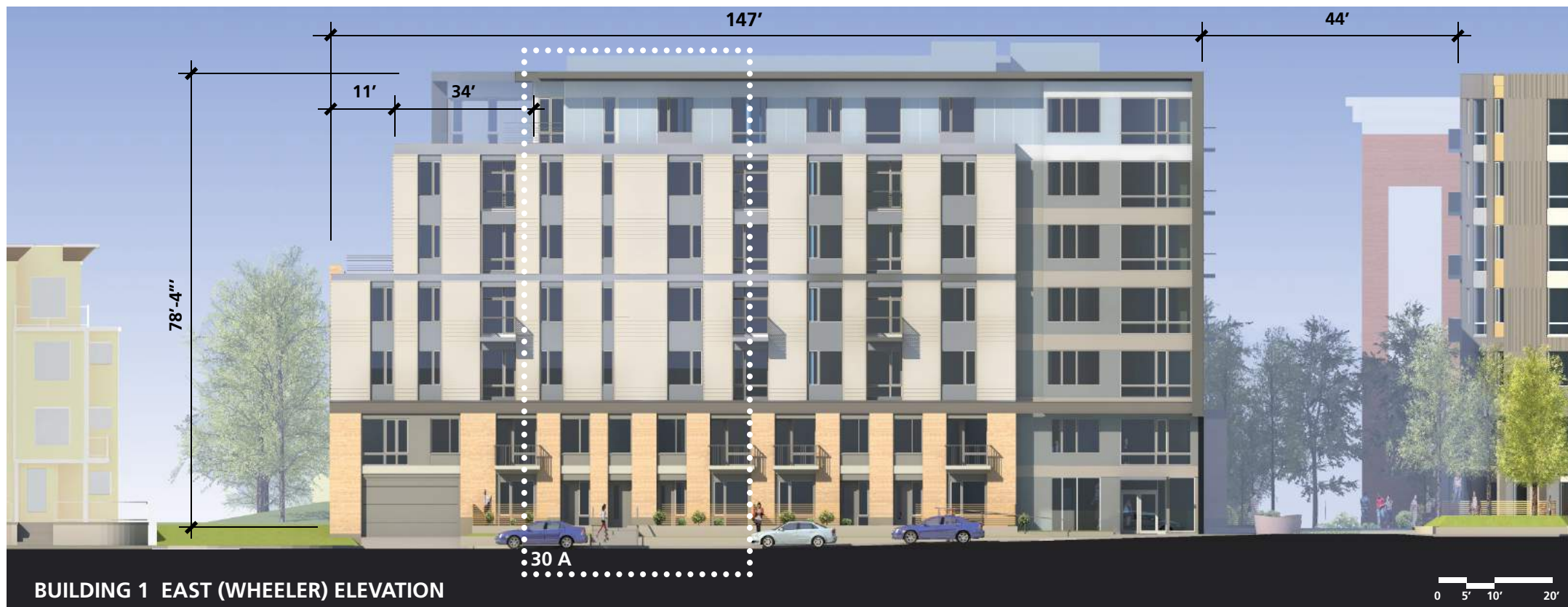


BUILDING 2 EAST (WHEELER) ELEVATION

31 A

0 5' 10' 20'



BUILDING 1 EAST (WHEELER) ELEVATION

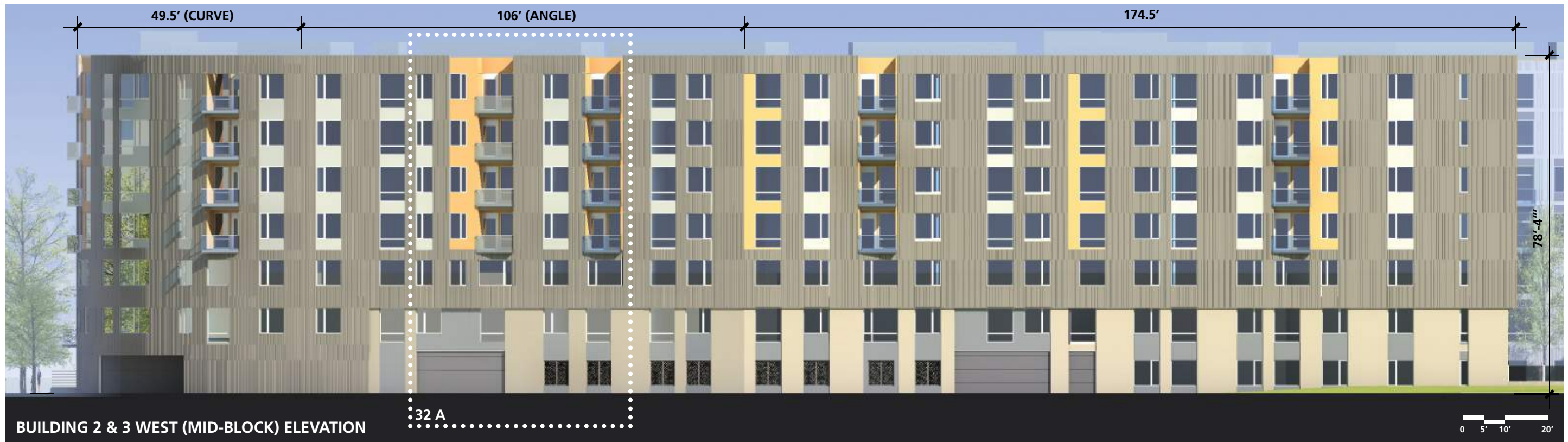
30 A

0 5' 10' 20'



BUILDING 3 WEST (WHEELER) ELEVATION

32 B



BUILDING 2 & 3 WEST (MID-BLOCK) ELEVATION

32 A

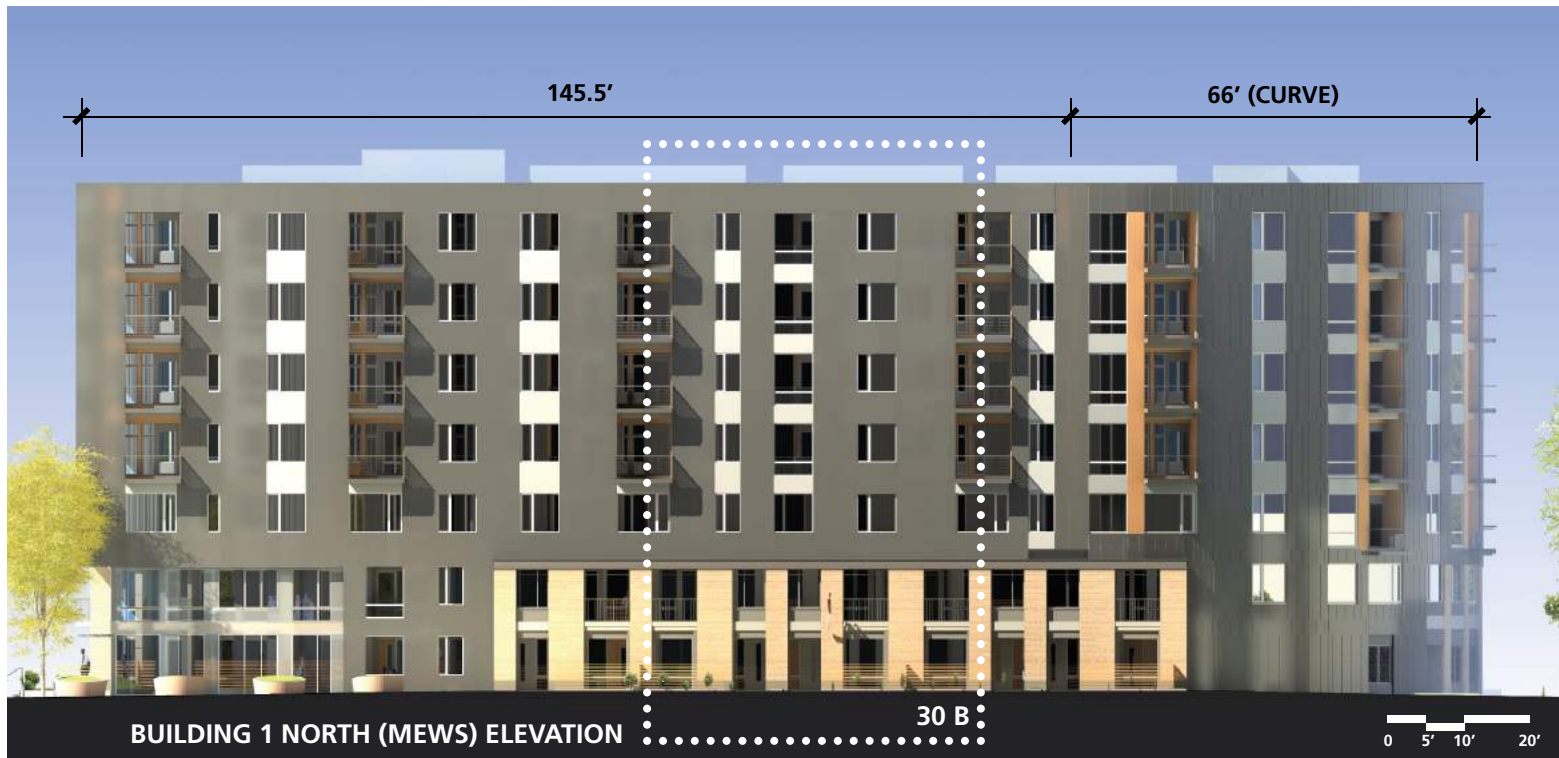


BUILDING 2 WEST (MID-BLOCK) ELEVATION

32 B



BUILDING 1 WEST (MID-BLOCK) ELEVATION





**A BUILDING 1 EAST (WHEELER STREET) PARTIAL ELEVATION**



FLAT METAL PANEL



FIBER CEMENT CLAPBOARD SIDING



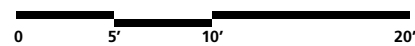
BRICK



**B BUILDING 1 NORTH (MEWS) PARTIAL ELEVATION**



**A BUILDING 2 EAST (WHEELER STREET) PARTIAL ELEVATION**



**CORRUGATED METAL PANEL W/ ACCENT PANEL**



**SIMULATED WOOD RESIN PANEL**



**CORRUGATED METAL PANEL**



**STUCCO**

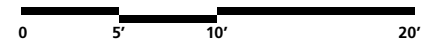


**B BUILDINGS 2 & 3 COURTYARD PARTIAL ELEVATIONS**





**A BUILDING 3 WEST (MID-BLOCK) PARTIAL ELEVATION**



**METAL PANEL AND FIBERGLASS WINDOWS**



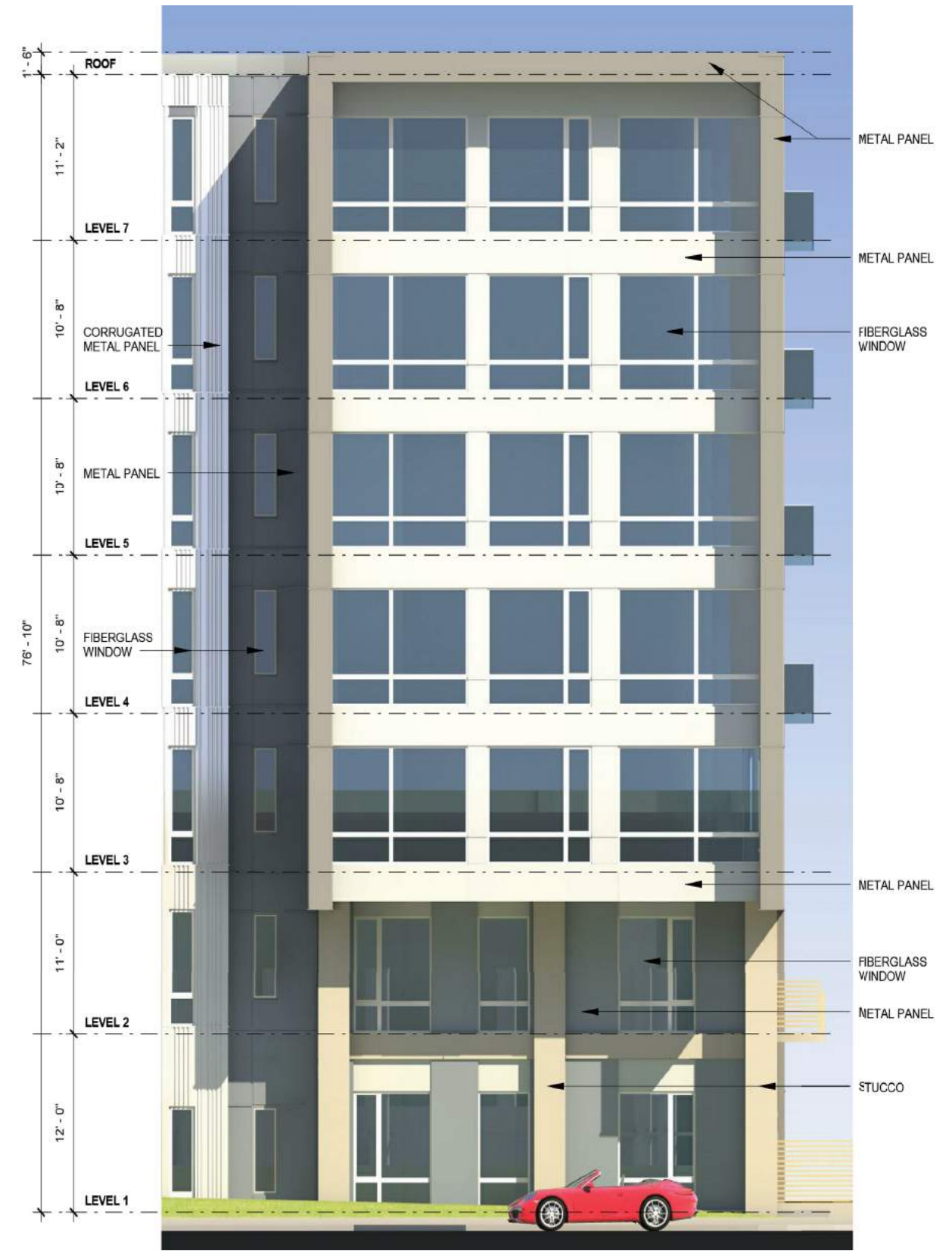
**SIMULATED WOOD RESIN PANEL**



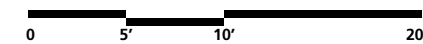
**CORRUGATED METAL PANEL**



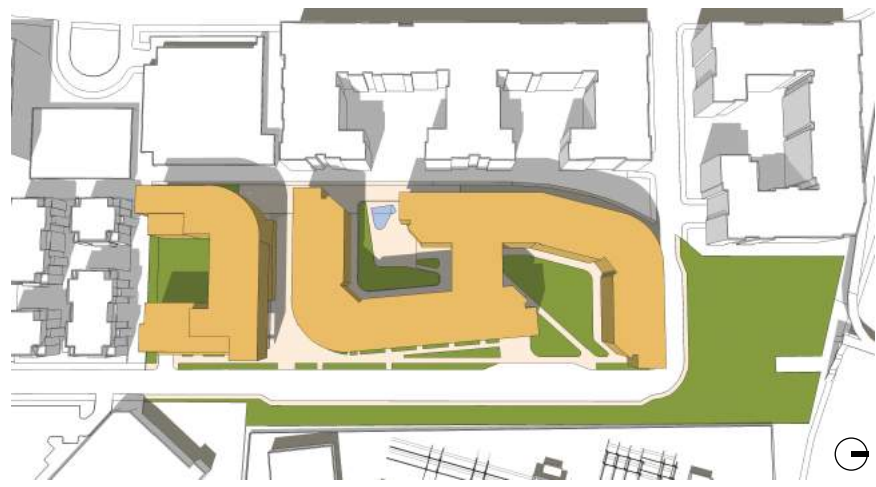
**STUCCO**



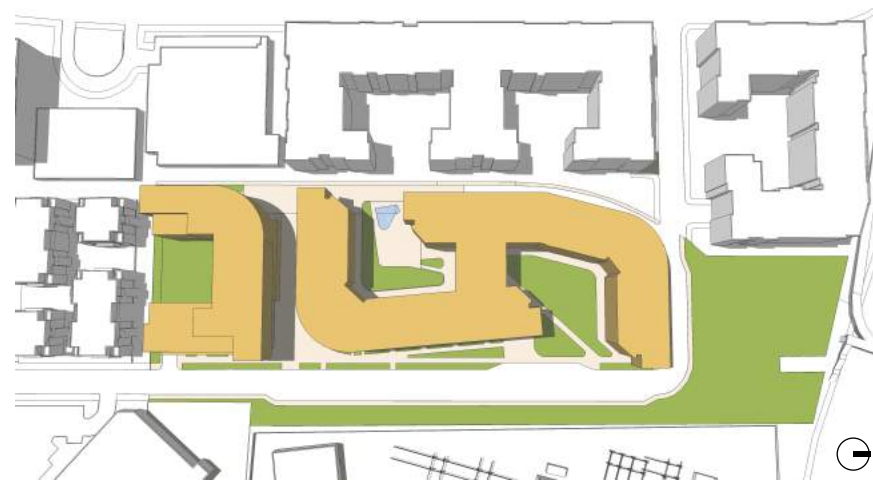
**B BUILDINGS 2 & 3 PARTIAL ELEVATION**



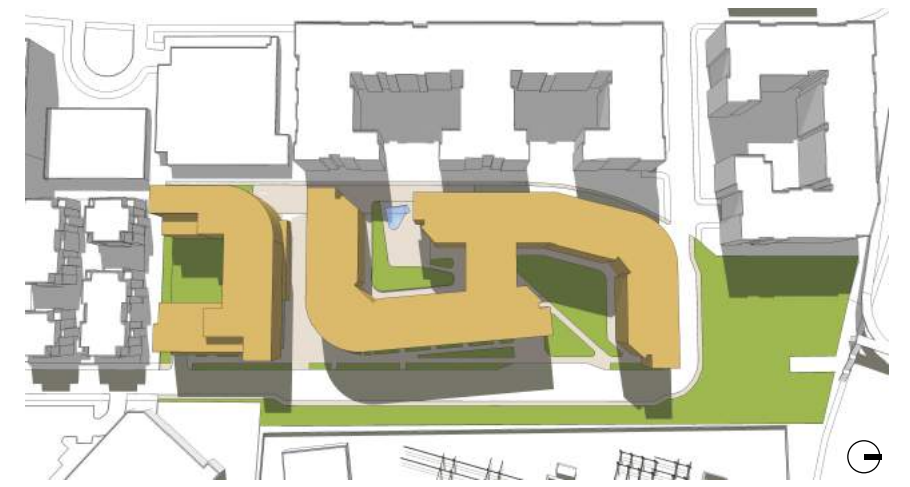




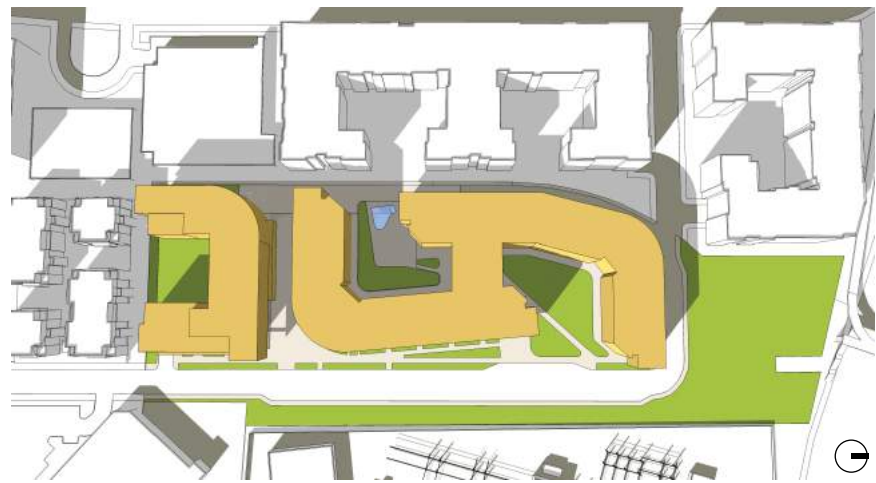
JUNE 21 0900



JUNE 21 1200



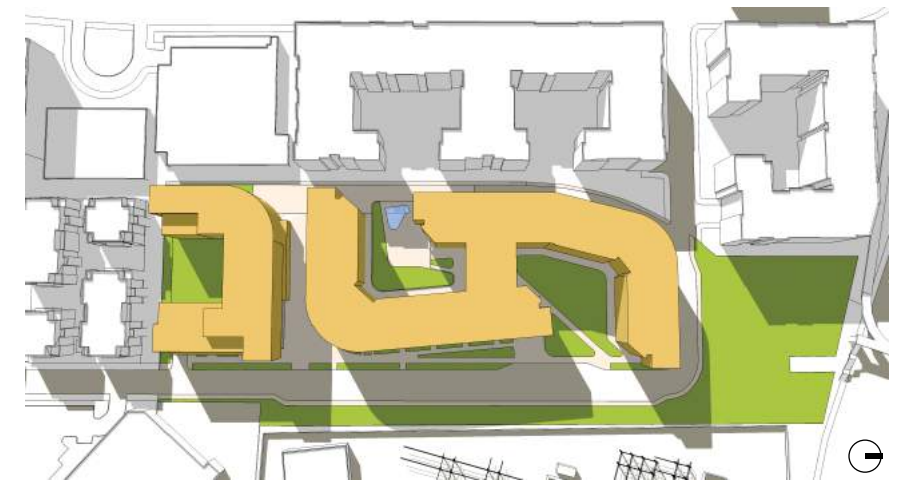
JUNE 21 1500



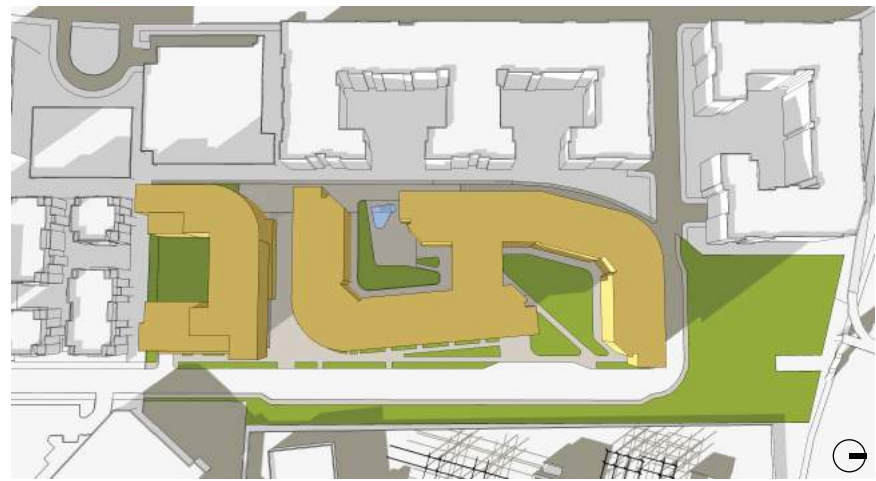
MARCH/ SEPTEMBER 22 0900



MARCH/ SEPTEMBER 22 1200



MARCH/ SEPTEMBER 22 1500



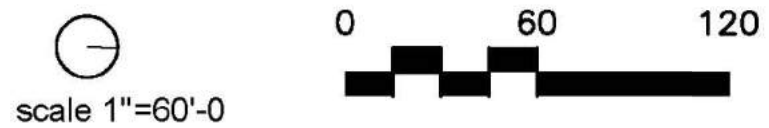
DECEMBER 22 0900



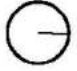
DECEMBER 22 1200

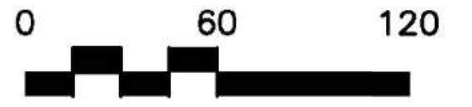


DECEMBER 22 1500





  
 scale 1"=60'-0"





RAISED CROSSWALK

PEDESTRIAN CONNECTION

PATIOS AND LANDSCAPE BUFFERS

SCULPTURAL PLANTED BUFFER

MULTI MODAL

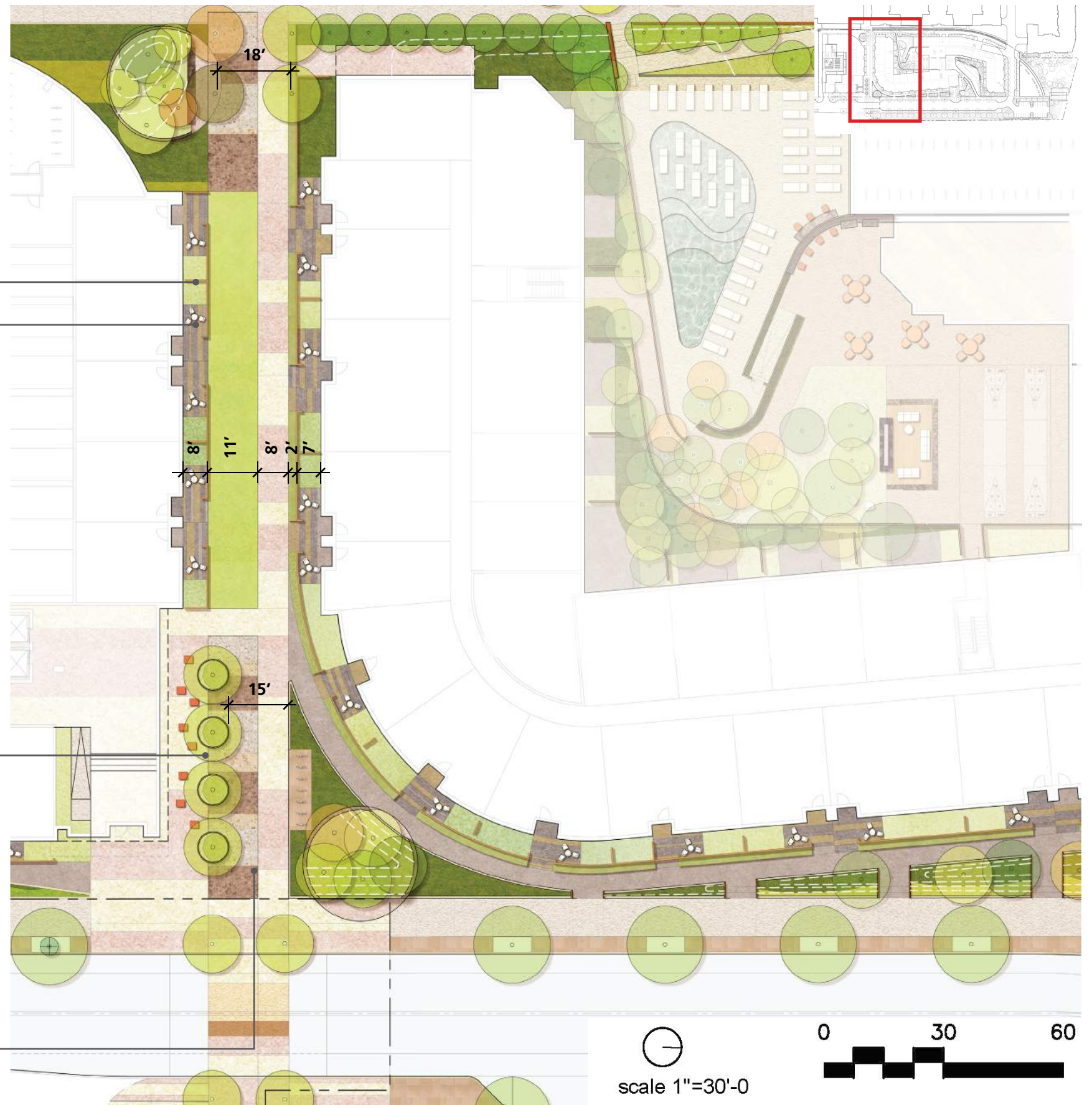




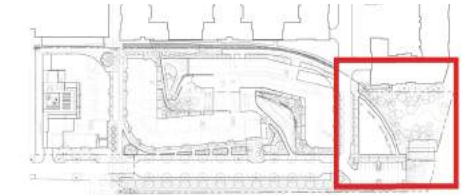
PATIOS AND LANDSCAPE BUFFERS

SCULPTURAL ENTRY PLANTING

MULTIMODAL CONNECTION





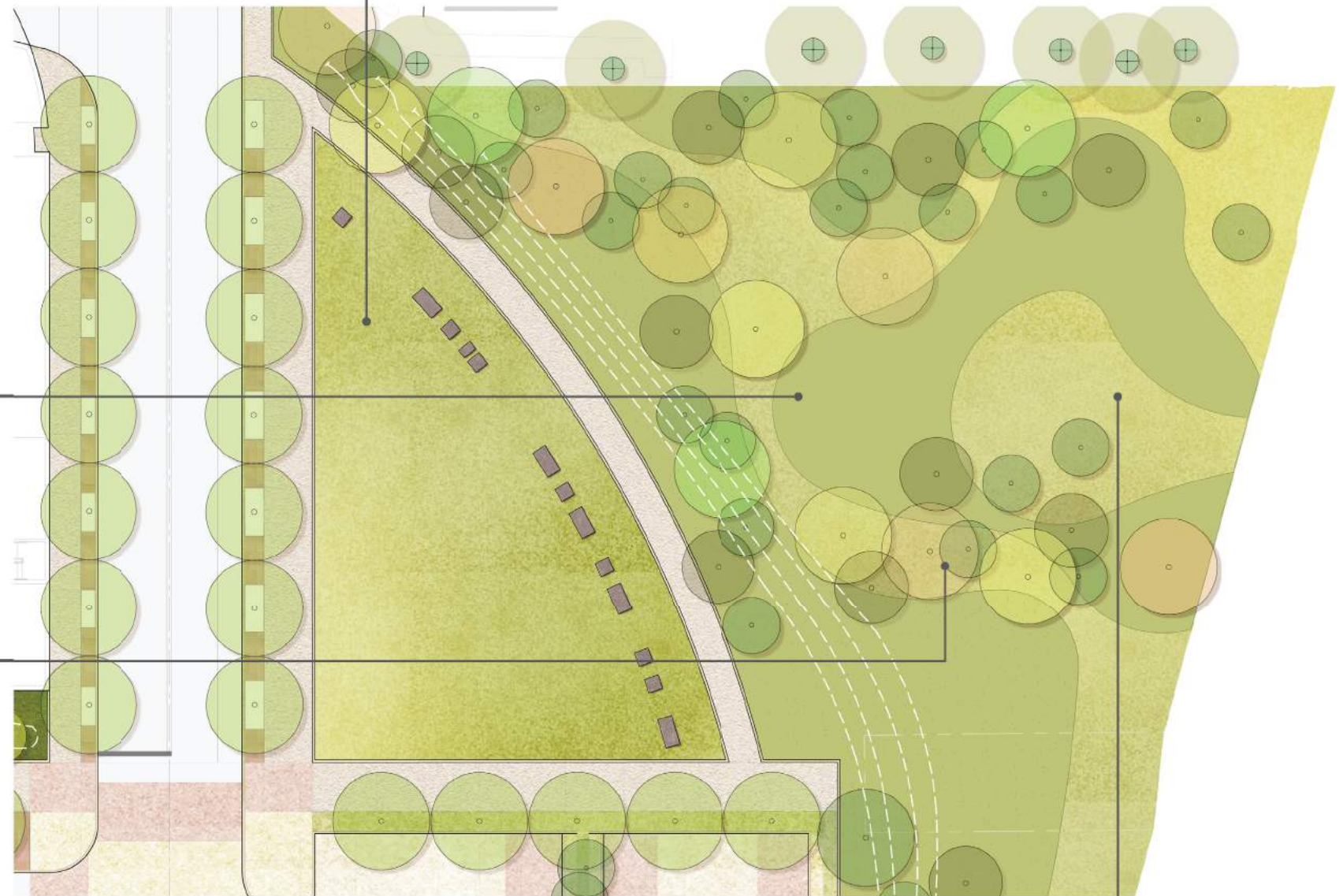


ACTIVE LAWN

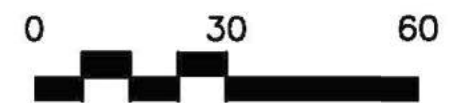
FLEXIBLE GREEN

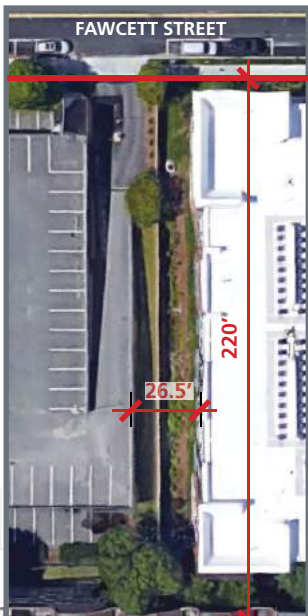
NATIVE PLANTING

STORM WATER MANAGEMENT



scale 1"=30'-0"





AERIAL VIEW OF PROPERTY WESTERLY ADJACENT TO 55 WHEELER MEWS

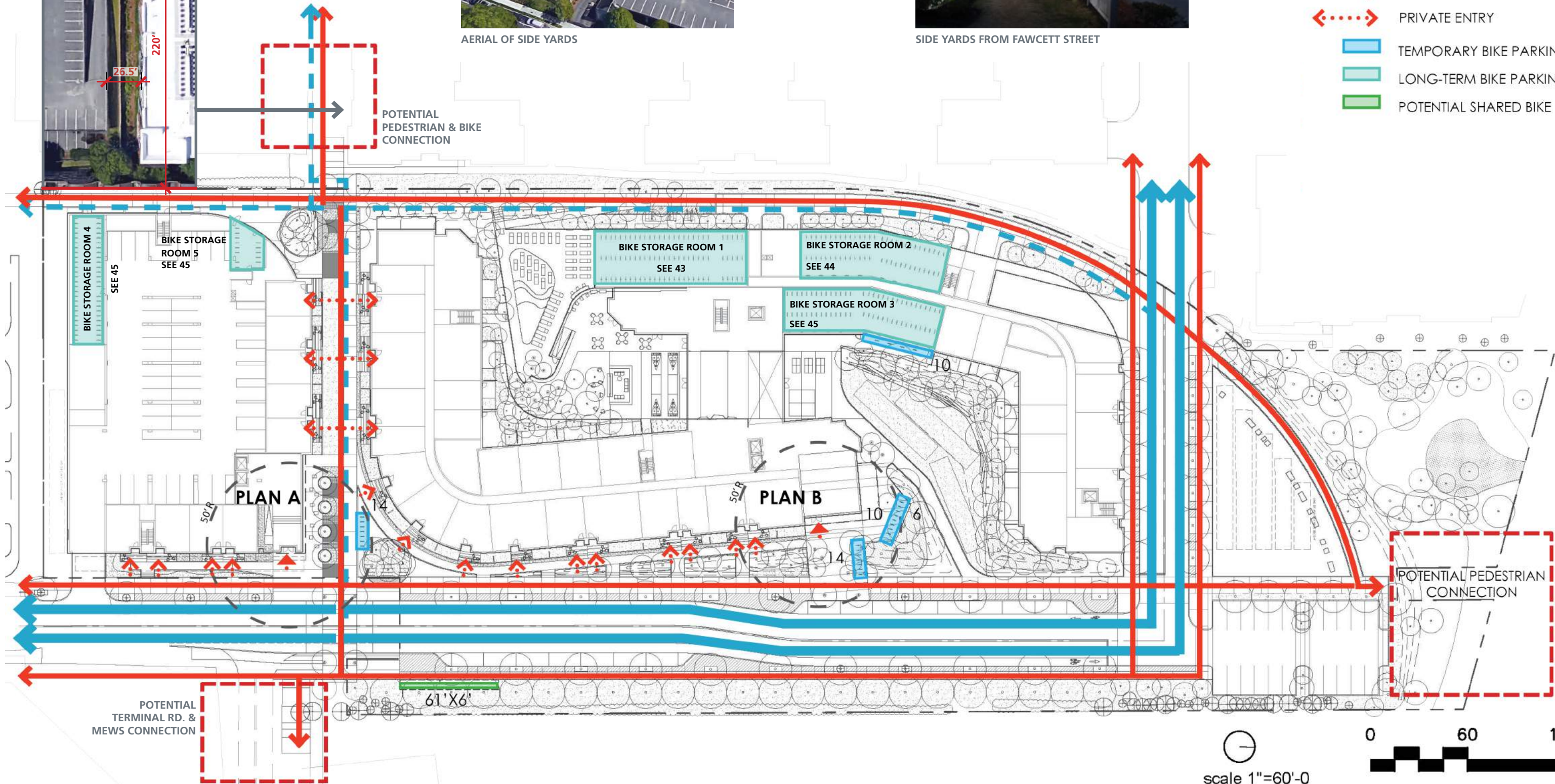


AERIAL OF SIDE YARDS

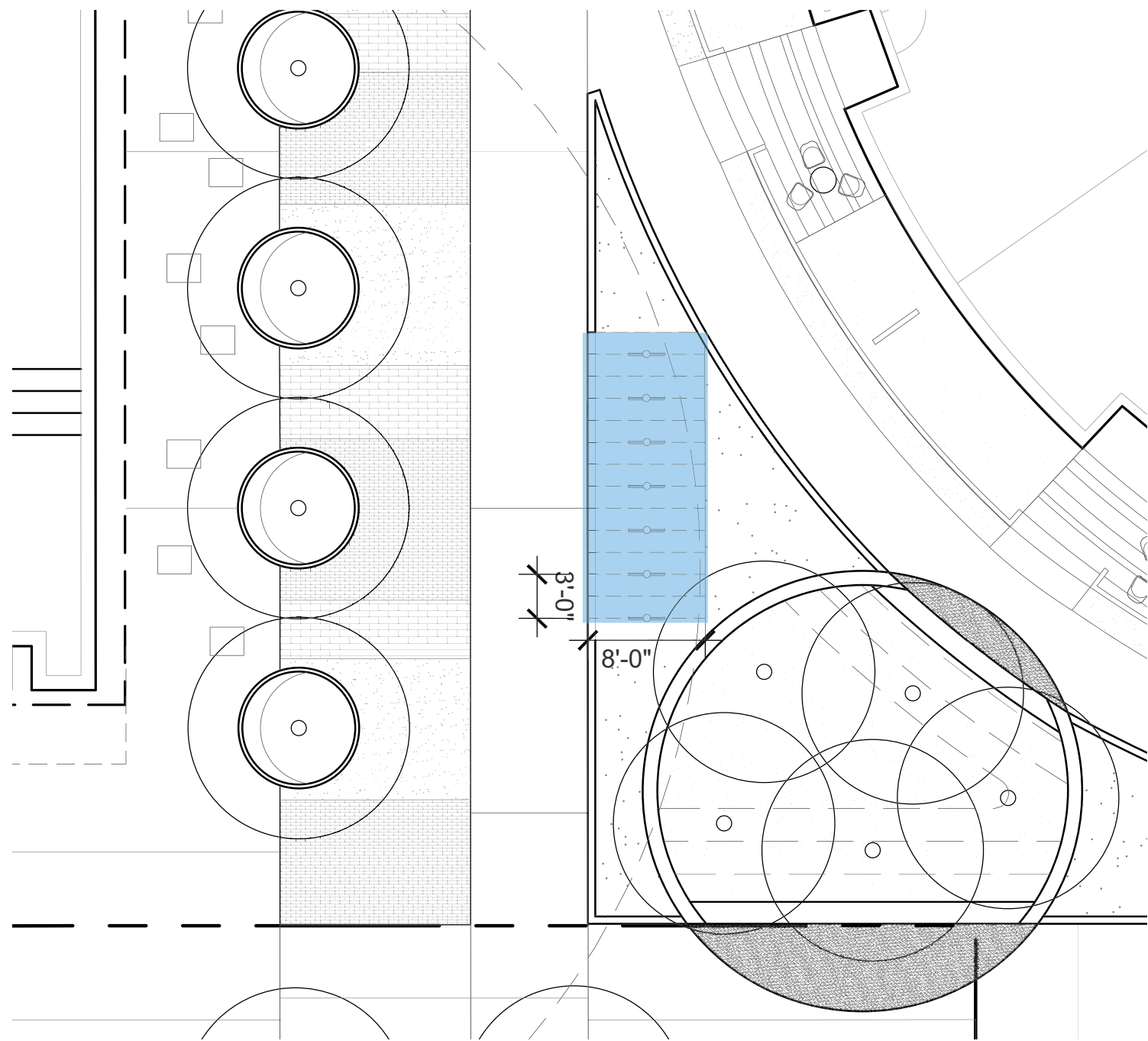


SIDE YARDS FROM FAWCETT STREET

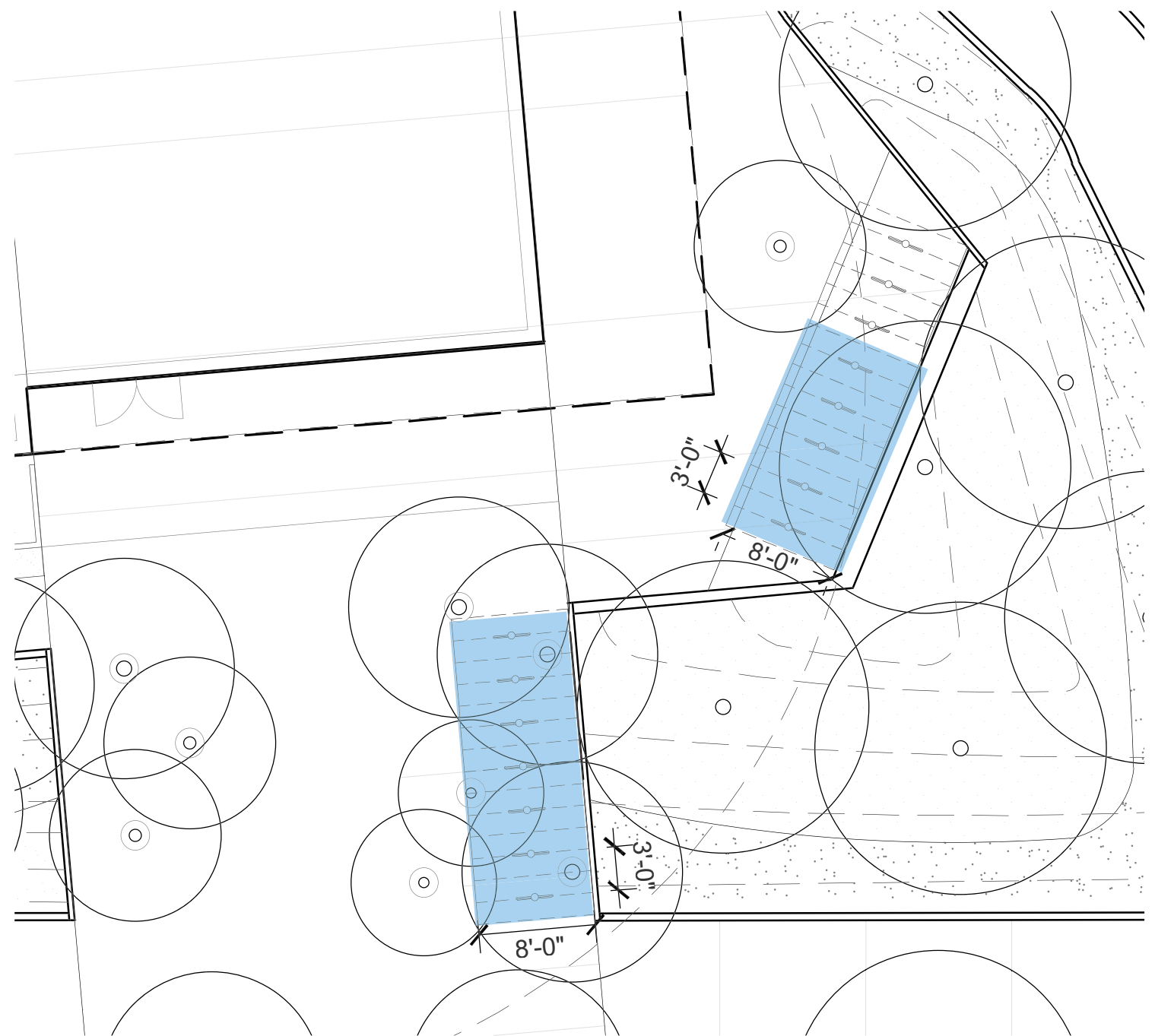
- PEDESTRIAN
- BIKE
- - - BIKE REDUCED SPEED
- ▶ MAIN ENTRY
- ◀ ··· ··· ▶ PRIVATE ENTRY
- TEMPORARY BIKE PARKING
- LONG-TERM BIKE PARKING
- POTENTIAL SHARED BIKE HUB



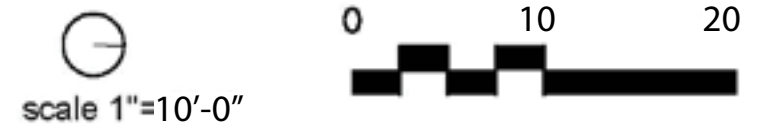




**PLAN A** MEWS BUILDING 1 ENTRY - 14 SPACES

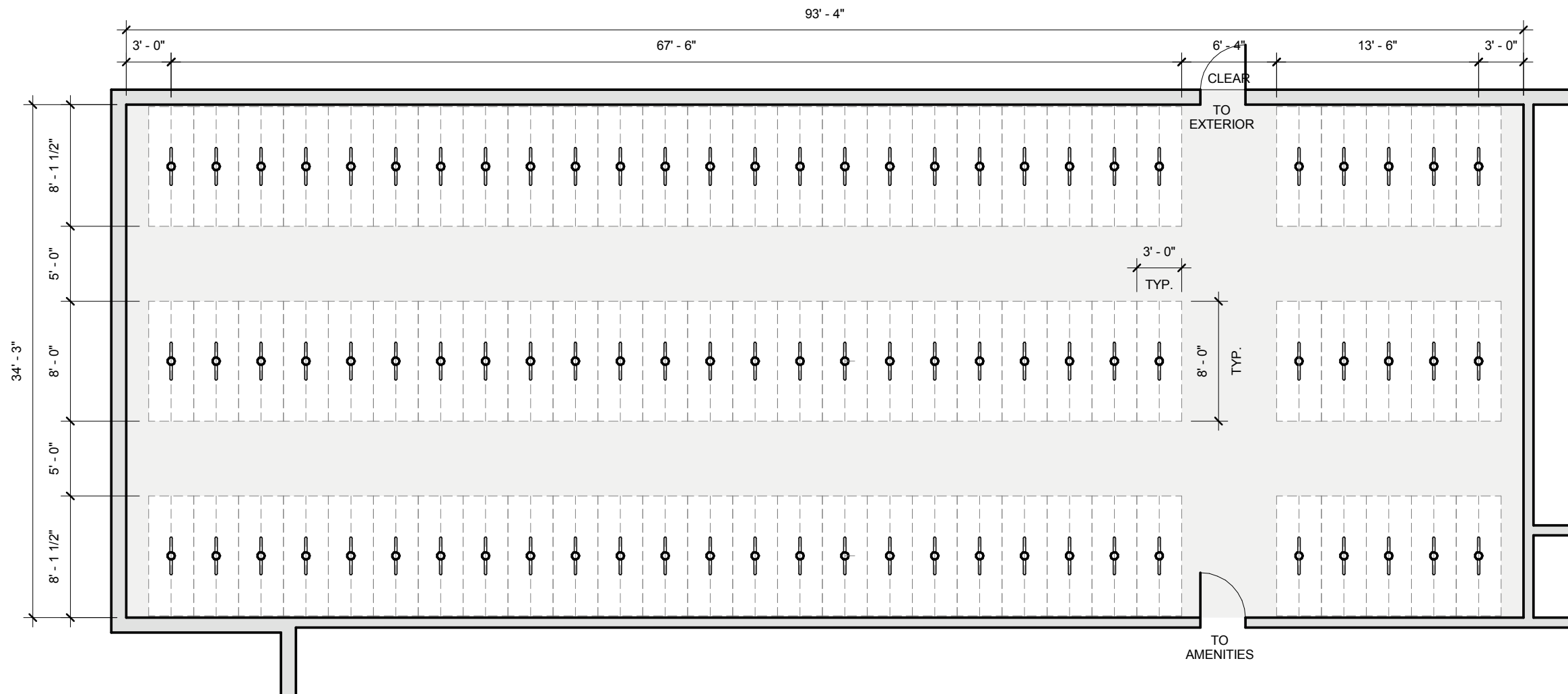


**PLAN B** WHEELER STREET BUILDING 2 ENTRY - 30 SPACES (24 WITH IN 50' OF ENTRY)

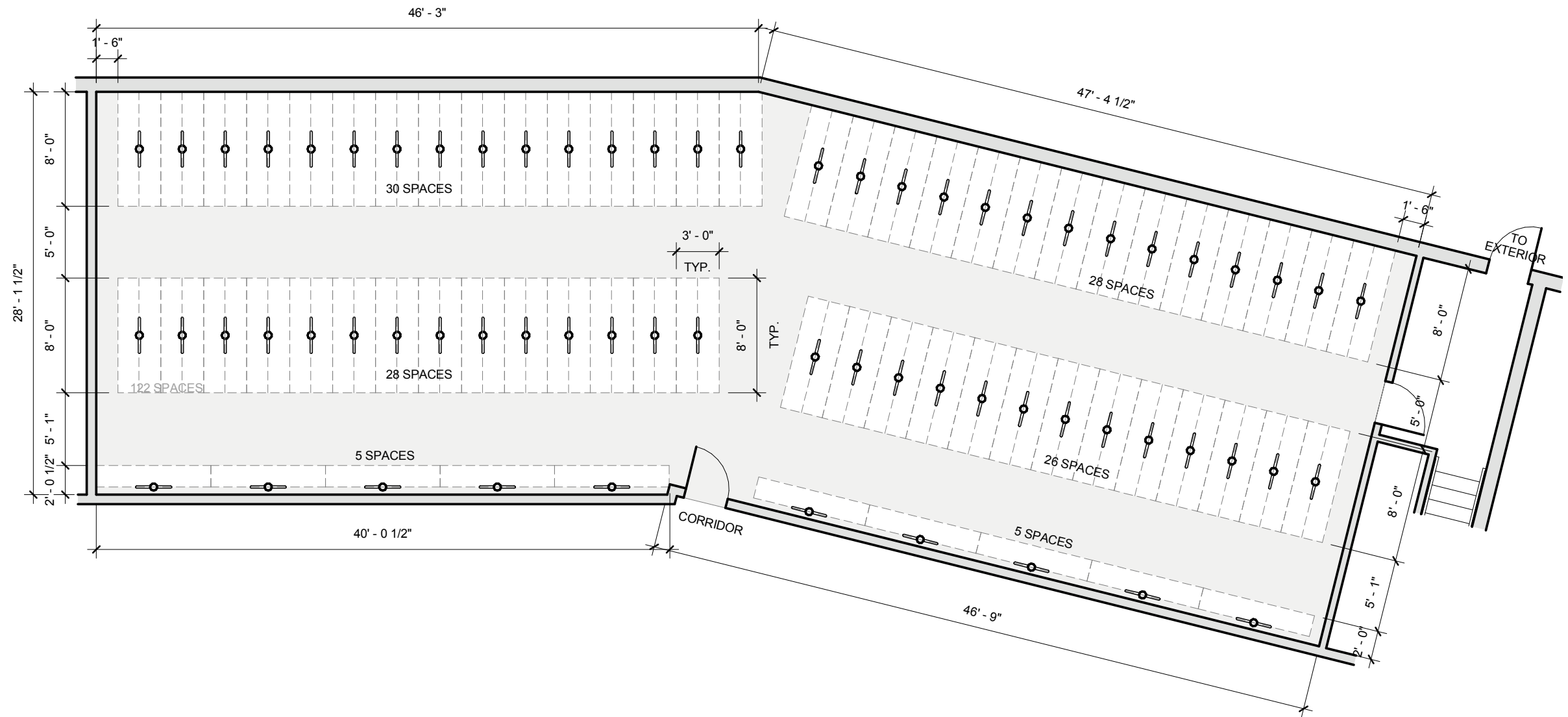


scale 1"=10'-0"

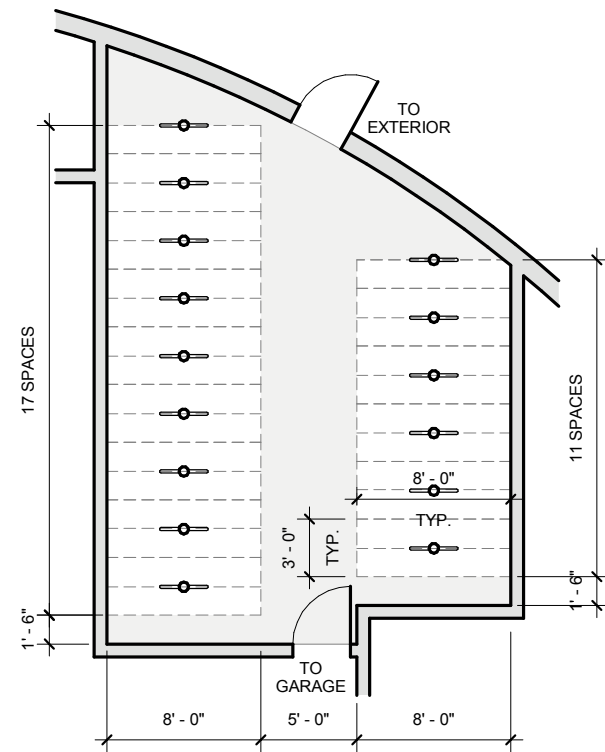
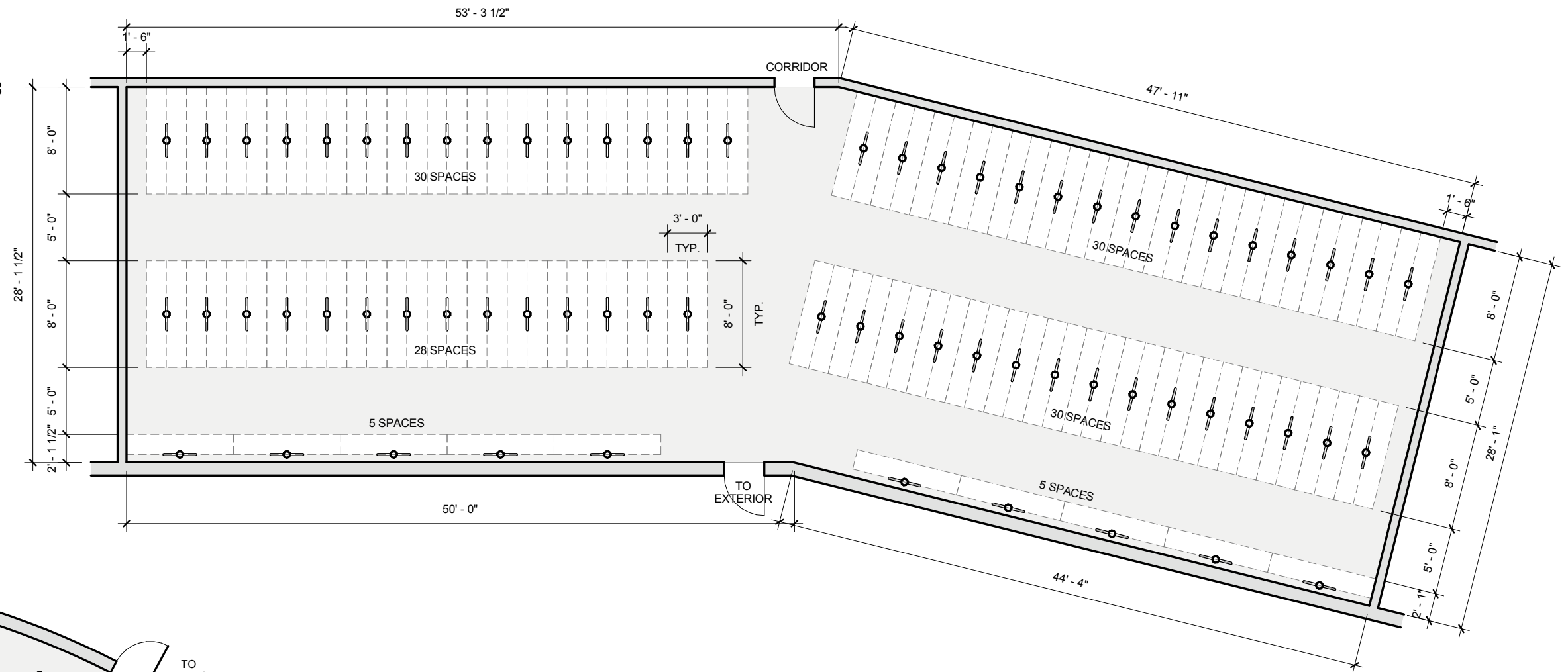
**BIKE STORAGE ROOM 1**  
 168 SPACES  
 1" = 10'



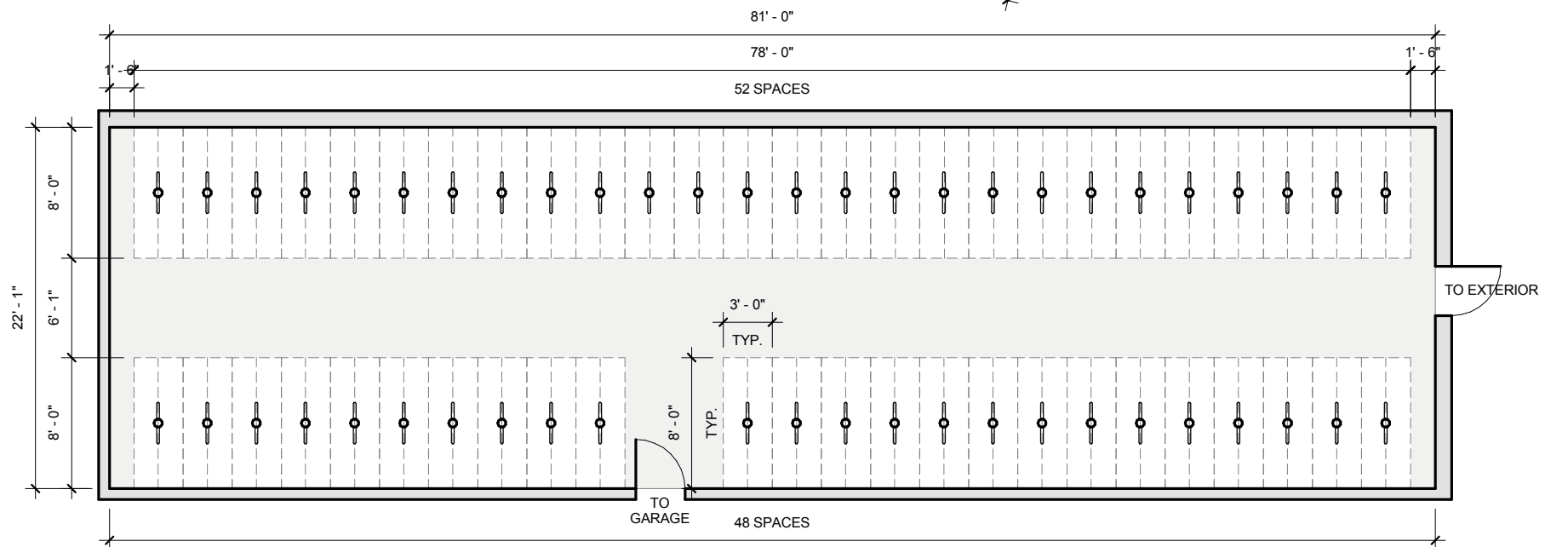
**BIKE STORAGE ROOM 2**  
 122 SPACES  
 1" = 10'



**BIKE STORAGE ROOM 3**  
128 SPACES  
1" = 10'



**BIKE STORAGE ROOM 5**  
28 SPACES  
1" = 10'



**BIKE STORAGE ROOM 4**  
100 SPACES  
1" = 10'



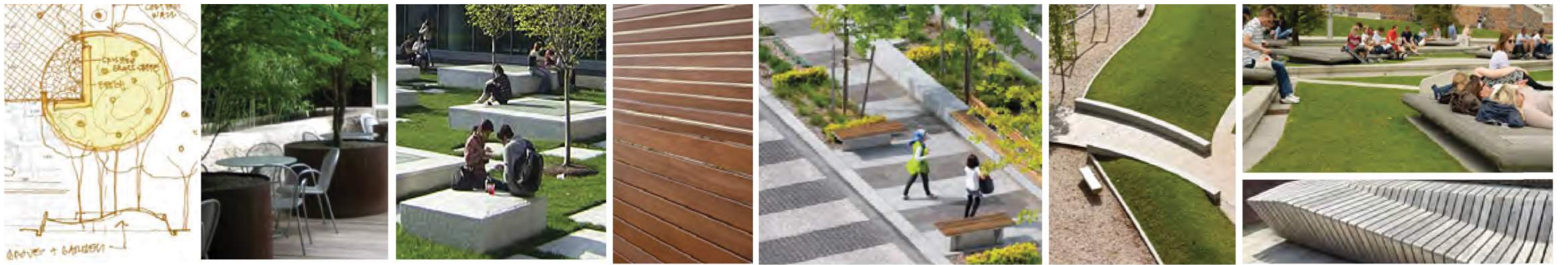
UNIT PAVERS- TEXTURAL VARIATION FOR SPEED CONTROL AND VISUAL ORIENTATION

POURED IN PLACE TEXTURED AND COLORED CONCRETE

UNIT PAVERS AND POURED IN PLACE PAVING MATERIAL

PLAZA QUALITY VEHICULAR PAVING



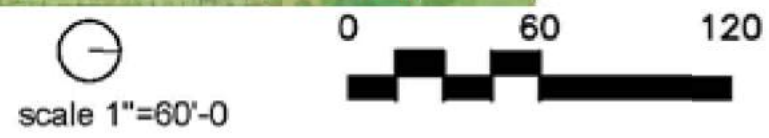


○ GROVE AND GARDEN BENCHES    
 ■ STOOL    
 — PRIVACY SCREEN    
 — PLANTER BENCH    
 — NATURAL STONE SEATING    
 - - - RIBBON BENCH





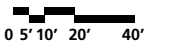
○ CAMBRIDGE ACORN STYLE FIXTURE STREET LIGHT  
 ● PEDESTRIAN LED LIGHT  
 ● PEDESTRIAN BOLLARD LIGHT  
 — WALKWAY LIGHTING  
 — FURNITURE LIGHTING  
 ■ TREE DOWN LIGHTING



LEGEND

 Existing Surveyed Tree

Total DBH of Significant Trees: 1354"





-  Existing Tree to Remain
-  Proposed Tree Removal
-  Future Building Footprint
-  Tree Protection Zone

Total DBH of Significant Trees: 1354"  
 DBH of Significant Trees Saved: 542"  
 DBH to Mitigate: 812"

