



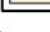
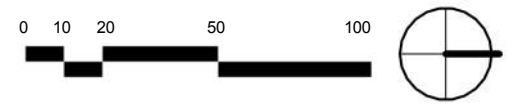
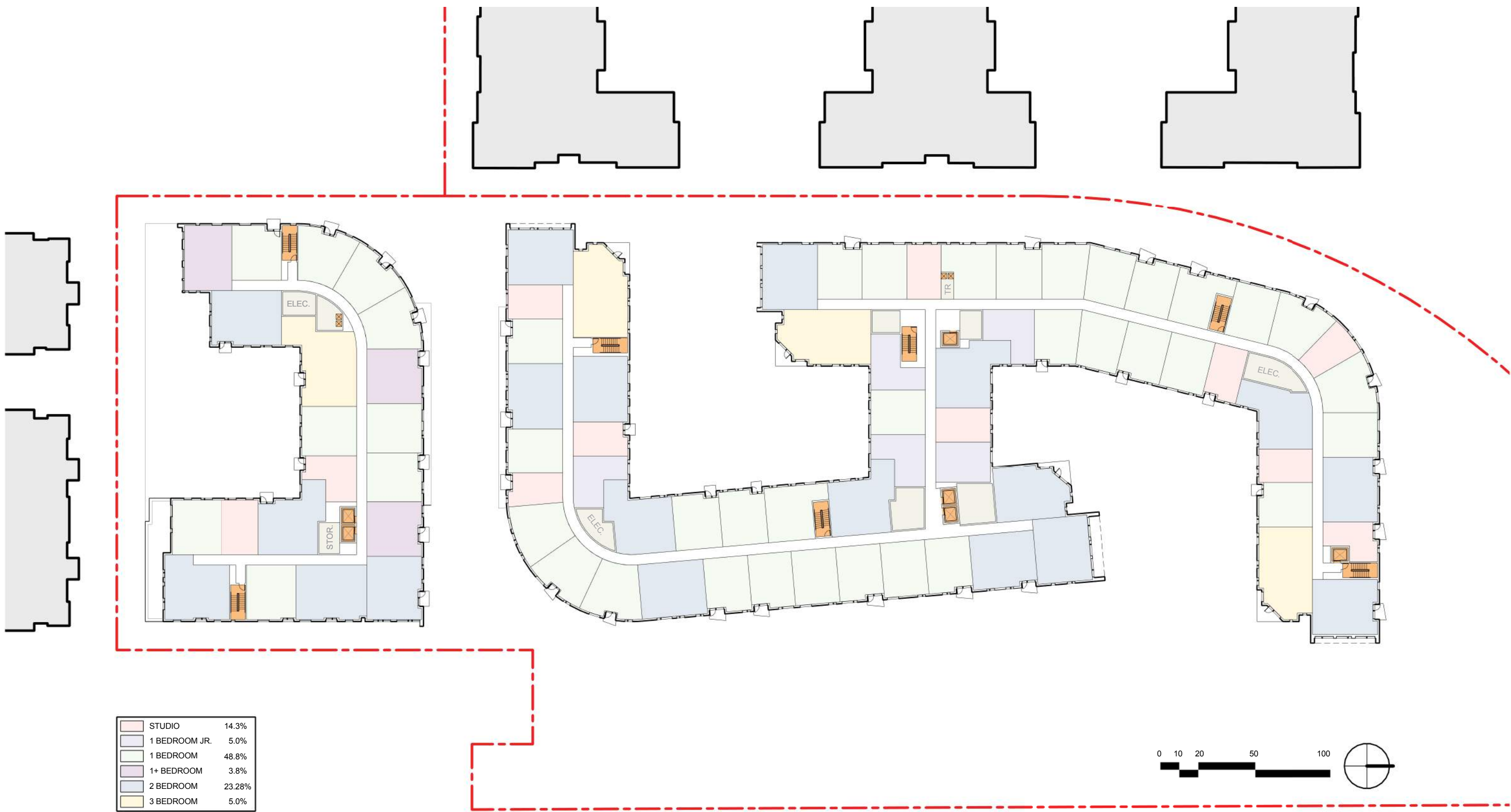
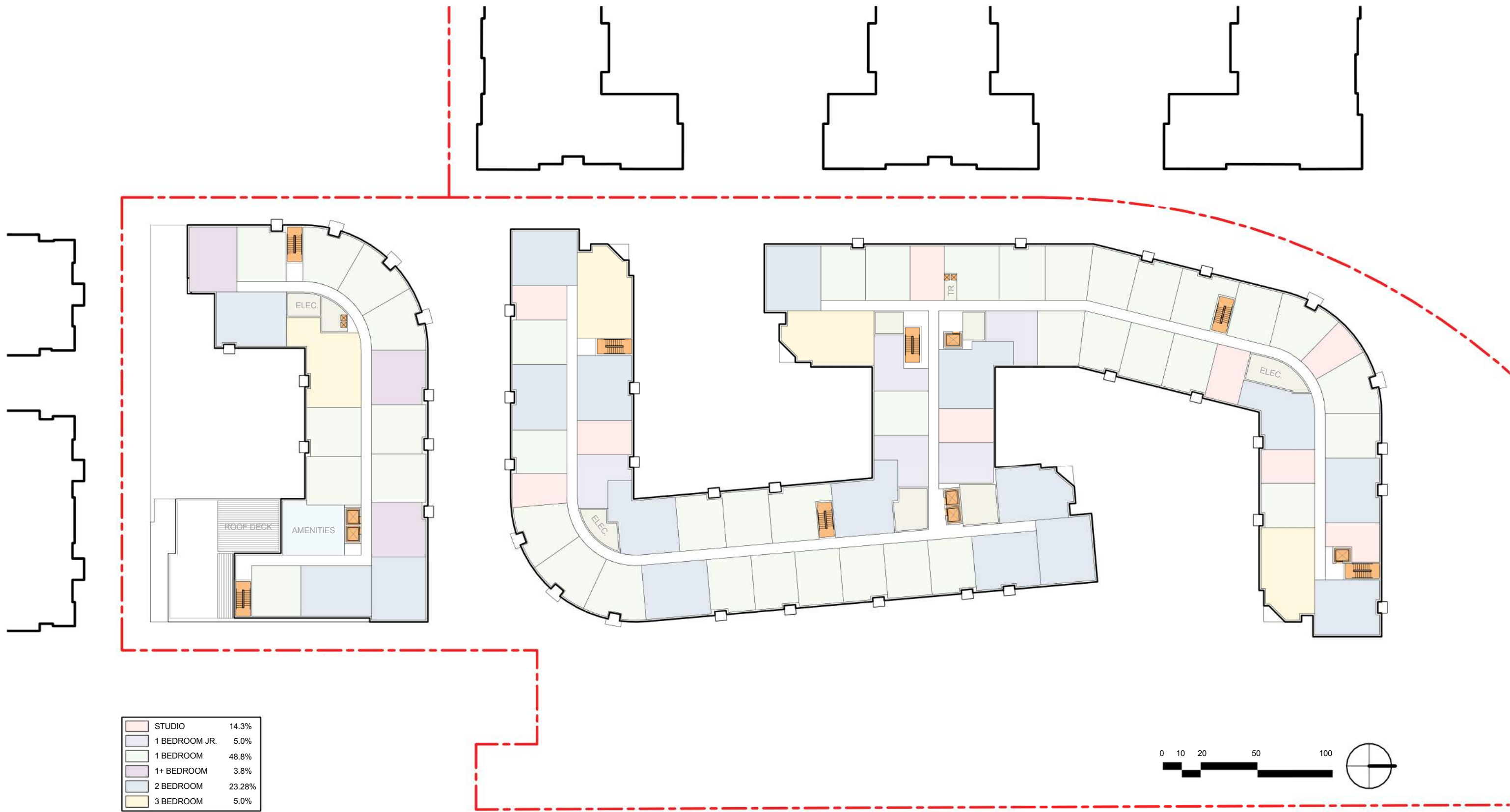
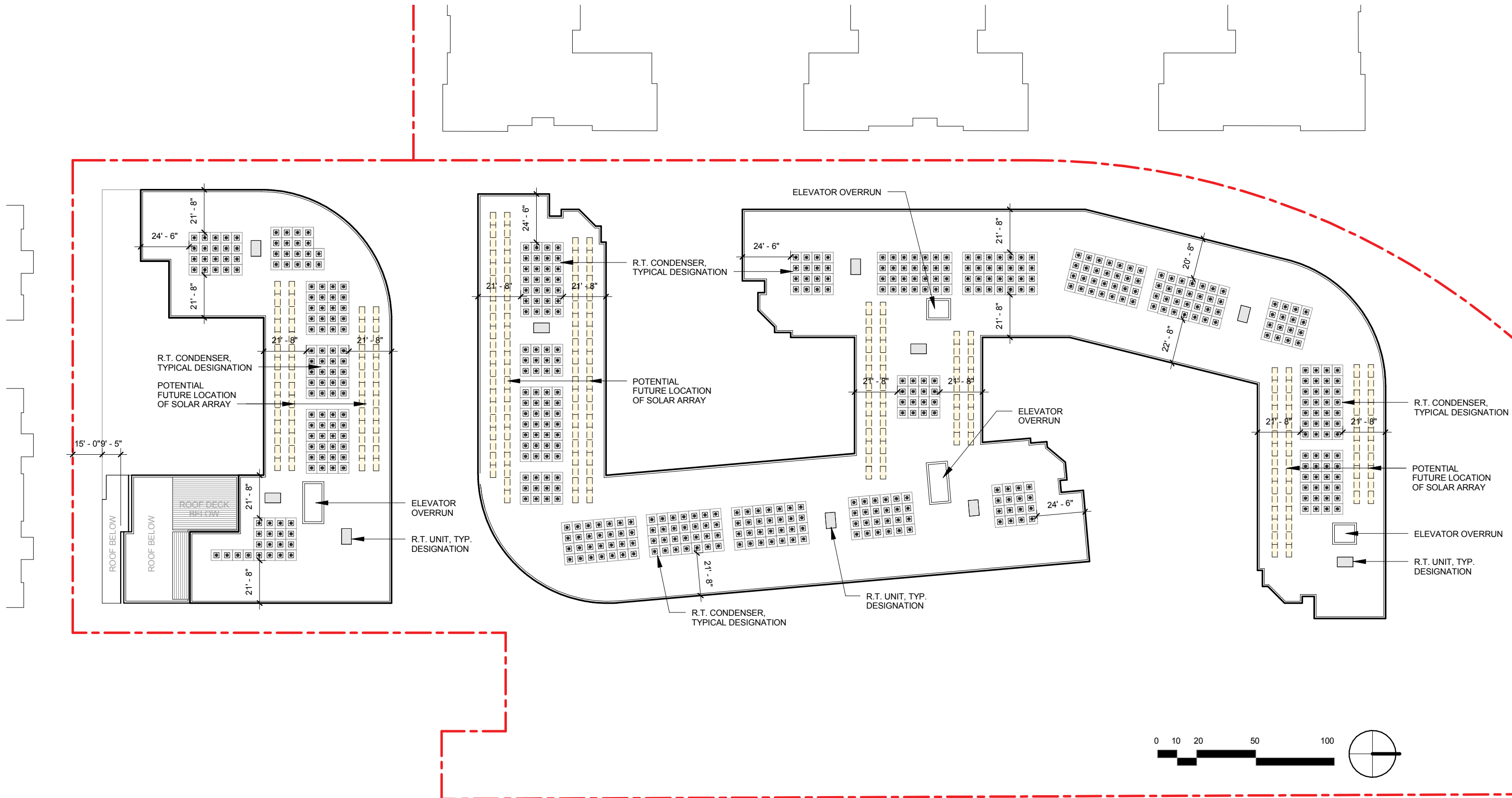
	STUDIO	14.3%
	1 BEDROOM JR.	5.0%
	1 BEDROOM	48.8%
	1+ BEDROOM	3.8%
	2 BEDROOM	23.28%
	3 BEDROOM	5.0%

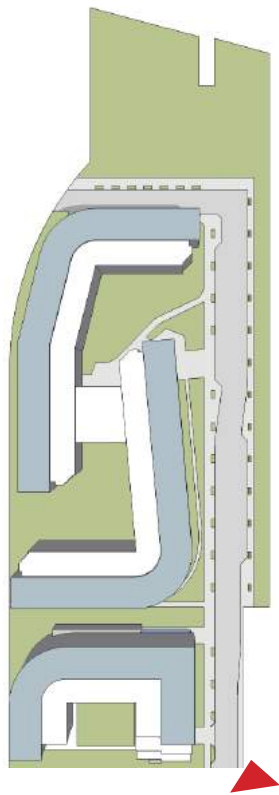










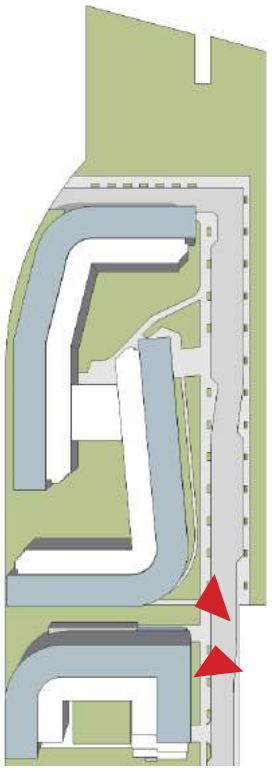


Rendering for architectural reference only. For roadway, curb cut and landscape design detail, please see Civil and Landscape plans.



55 WHEELER STREET

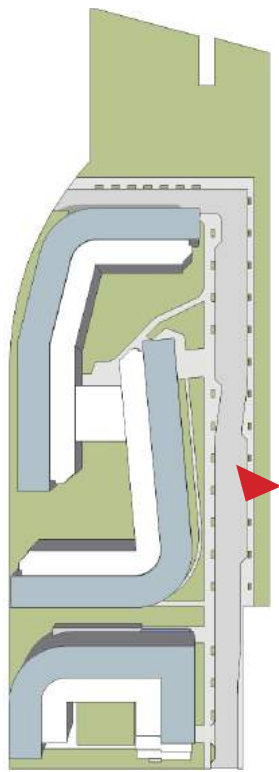
WHEELER STREET LOOKING NORTH



Rendering for architectural reference only. For roadway, curb cut and landscape design detail, please see Civil and Landscape plans.

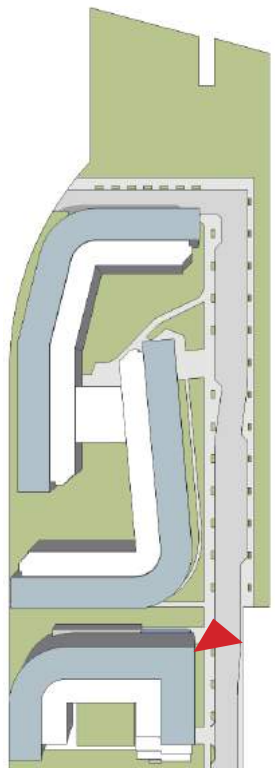


55 WHEELER STREET
BUILDINGS 1 & 2 AT PEDESTRIAN MEWS

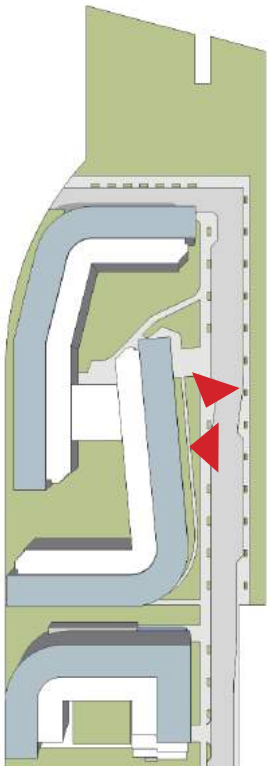


Rendering for architectural reference only. For roadway, curb cut and landscape design detail, please see Civil and Landscape plans.





Rendering for architectural reference only. For roadway, curb cut and landscape design detail, please see Civil and Landscape plans.



Rendering for architectural reference only. For roadway, curb cut and landscape design detail, please see Civil and Landscape plans.



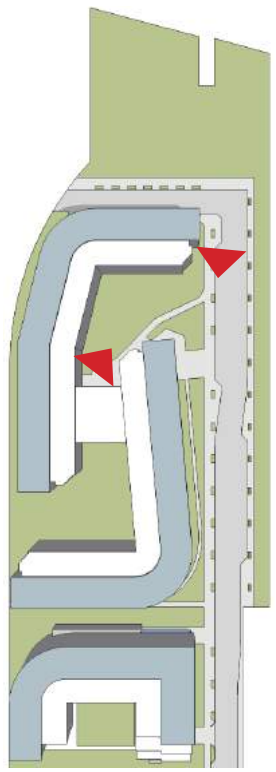
55 WHEELER STREET

BUILDING 2 FACADE AND UNIT ENTRIES



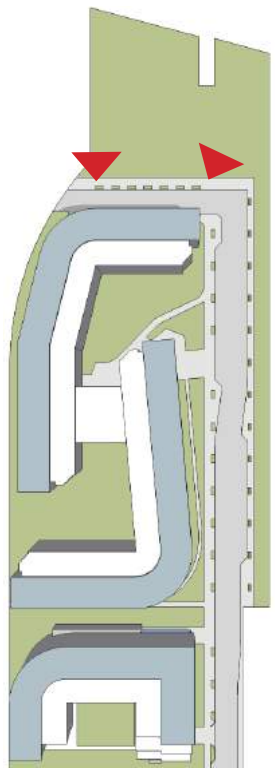
55 WHEELER STREET

WHEELER STREET & BUILDING SECTION



Rendering for architectural reference only. For roadway, curb cut and landscape design detail, please see Civil and Landscape plans.





Rendering for architectural reference only. For roadway, curb cut and landscape design detail, please see Civil and Landscape plans.



55 WHEELER STREET
BUILDING 3 NORTH & GARAGE ENTRY