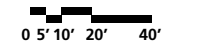
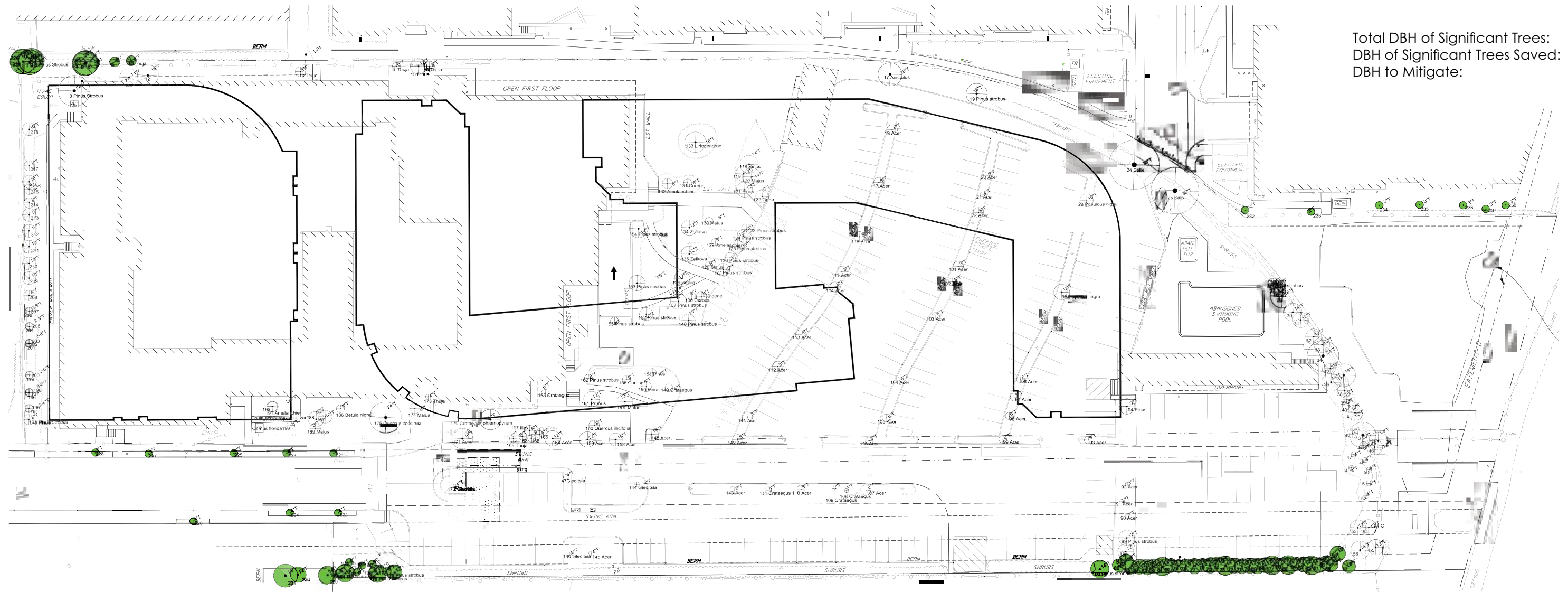


-  Existing Tree to Remain
-  Proposed Tree Removal
-  Future Building Footprint
-  Tree Protection Zone

Total DBH of Significant Trees: 1354"
 DBH of Significant Trees Saved: 542"
 DBH to Mitigate: 812"



55 Wheeler Street

Existing Tree Inventory

#	Species	Common Name	DBH (inches)	Public or Private	Significant Private	Status
1	Pinus strobus	White Pine	16	Private	Y	Protect
2	Pinus strobus	White Pine	16	Private	Y	Protect
3	Pinus strobus	White Pine	12	Private	Y	Protect
4	Chamaecyparis sp	A. White Cedar	6	Private		Protect
5	Pinus strobus	White Pine	20	Private	Y	Protect
6	Pinus strobus	White Pine	20	Private	Y	Protect
7	Thuja sp	Cedar	6	Private		Protect
8	Pinus strobus	White Pine	24	Private	Y	Protect
9	Chamaecyparis sp	A. White Cedar	6	Private		Protect
10	Chamaecyparis sp	A. White Cedar	6	Private		Protect
11	Pinus strobus	White Pine	14	Private	Y	Remove
12	Pinus strobus	White Pine	16	Private	Y	Remove
13	Chamaecyparis sp	A. White Cedar	8	Private		Remove
14	Chamaecyparis sp	A. White Cedar	6	Private		Remove
15	Pinus	Pine	12	Private	Y	Remove
16	Chamaecyparis sp	A. White Cedar	8	Private		Remove
17	Aesculus	Chestnut	18	Private	Y	Remove
18	Acer	Maple	8	Private		Remove
19	Pinus strobus	White Pine	16	Private	Y	Remove
20	Acer	Maple	6	Private		Remove
21	Acer	Maple	4	Private		Remove
22	Acer	Maple	8	Private		Remove
23	Populus nigra	Lombardy Poplar	10	Private	Y	Remove
24	Salix	Willow	38	Private	Y	Remove
25	Salix	Willow	36	Private	Y	Remove
26	Pinus strobus	White Pine	8	Private		Remove
27	Pinus strobus	White Pine	8	Private		Remove
28	Pinus strobus	White Pine	8	Private		Remove
29	Pinus strobus	White Pine	18	Private	Y	Remove
30	Pinus strobus	White Pine	14	Private	Y	Remove
31	Pinus strobus	White Pine	12	Private	Y	Remove
32	Pinus strobus	White Pine	12	Private	Y	Remove
33	Pinus strobus	White Pine	12	Private	Y	Remove
34	Pinus strobus	White Pine	24	Private	Y	Remove
35	Pinus strobus	White Pine	8	Private		Remove
36	Pinus strobus	White Pine	14	Private	Y	Remove
37	Pinus strobus	White Pine	18	Private	Y	Remove
38	Pinus strobus	White Pine	10	Private	Y	Remove
39	Pinus strobus	White Pine	6	Private		Remove
40	Pinus strobus	White Pine	10	Private	Y	Remove
41	Pinus strobus	White Pine	12	Private	Y	Remove
42	Pinus strobus	White Pine	8	Private		Remove
43	Pinus strobus	White Pine	20	Private	Y	Remove
45	Pinus strobus	White Pine	14	Private	Y	Remove
46	Pinus strobus	White Pine	12	Private	Y	Remove
47	Pinus strobus	White Pine	4	Private		Remove
48	Pinus strobus	White Pine	4	Private		Remove
49	Pinus strobus	White Pine	4	Private		Remove
50	Pinus strobus	White Pine	4	Private		Remove
51	Pinus strobus	White Pine	4	Private		Remove
52	Pinus strobus	White Pine	4	Private		Remove
53	Pinus strobus	White Pine	12	Private	Y	Remove
54	Pinus strobus	White Pine	12	Private	Y	Protect
55	Pinus strobus	White Pine	12	Private	Y	Protect
56	Pinus strobus	White Pine	14	Private	Y	Protect
57	Pinus strobus	White Pine	8	Private		Protect
58	Pinus strobus	White Pine	12	Private	Y	Protect
59	Pinus strobus	White Pine	12	Private	Y	Protect
60	Pinus strobus	White Pine	8	Private		Protect

61	Pinus strobus	White Pine	30	Private	Y	Protect
62	Pinus strobus	White Pine	14	Private	Y	Protect
63	Pinus strobus	White Pine	12	Private	Y	Protect
64	Pinus strobus	White Pine	8	Private		Protect
65	Pinus strobus	White Pine	14	Private	Y	Protect
66	Pinus strobus	White Pine	8	Private		Protect
67	Pinus strobus	White Pine	14	Private	Y	Protect
68	Pinus strobus	White Pine	12	Private	Y	Protect
69	Pinus strobus	White Pine	12	Private	Y	Protect
70	Pinus strobus	White Pine	12	Private	Y	Protect
71	Pinus strobus	White Pine	10	Private	Y	Protect
72	Pinus strobus	White Pine	12	Private	Y	Protect
73	Pinus strobus	White Pine	14	Private	Y	Protect
74	Pinus strobus	White Pine	10	Private	Y	Protect
75	Pinus strobus	White Pine	12	Private	Y	Protect
76	Pinus strobus	White Pine	8	Private		Protect
77	Pinus strobus	White Pine	12	Private	Y	Protect
78	Pinus strobus	White Pine	8	Private		Protect
79	Pinus strobus	White Pine	6	Private		Protect
80	Pinus strobus	White Pine	10	Private	Y	Protect
81	Pinus strobus	White Pine	14	Private	Y	Protect
82	Pinus strobus	White Pine	10	Private	Y	Protect
83	Pinus strobus	White Pine	12	Private	Y	Protect
84	Pinus strobus	White Pine	12	Private	Y	Protect
85	Pinus strobus	White Pine	10	Private	Y	Protect
86	Pinus strobus	White Pine	8	Private		Protect
87	Pinus strobus	White Pine	10	Private	Y	Protect
88	Pinus strobus	White Pine	12	Private	Y	Remove
89	Pinus strobus	White Pine	12	Private	Y	Remove
90	Acer	Maple	3	Private		Remove
91	Acer	Maple	3	Private		Remove
92	Acer	Maple	3	Private		Remove
93	Acer	Maple	6	Private		Remove
94	Pinus	Pine	12	Private	Y	Remove
95	Populus nigra	Lombardy Poplar	12	Private	Y	Remove
96	Acer	Maple	6	Private		Remove
97	Acer	Maple	6	Private		Remove
98	Acer	Maple	6	Private		Remove
99	Acer	Maple	6	Private		Remove
100	Pinus Strobus	White Pine	14	Private	Y	Protect
101	Acer	Maple	8	Private		Remove
102	Acer	Maple	6	Private		Remove
103	Acer	Maple	6	Private		Remove
104	Acer	Maple	6	Private		Remove
105	Acer	Maple	6	Private		Remove
106	Acer	Maple	6	Private		Remove
107	Acer	Maple	8	Private		Remove
108	Cotonegus	Hawthorn	3	Private		Remove
109	Cotonegus	Hawthorn	2	Private		Remove
110	Cotonegus	Hawthorn	6	Private		Remove
111	Cotonegus	Hawthorn	5	Private		Remove
112	Acer	Maple	8	Private		Remove
113	Acer	Maple	8	Private		Remove
114	Acer	Maple	8	Private		Remove
115	Acer	Maple	8	Private		Remove
116	Acer	Maple	8	Private		Remove
117	Acer	Maple	8	Private		Remove
118	Pinus strobus	White Pine	14	Private	Y	Remove
119	Pinus strobus	White Pine	12	Private	Y	Remove

120	Malus sp	Crabapple	14	Private	Y	Remove
121	Pinus strobus	White Pine	12	Private	Y	Remove
122	Gone		10	Private	Y	Remove
123	Pinus strobus	White Pine	8	Private		Remove
124	Pinus strobus	White Pine	10	Private	Y	Remove
125	Pinus strobus	White Pine	10	Private	Y	Remove
126	Pinus strobus	White Pine	8	Private		Remove
127	Pinus strobus	White Pine	10	Private	Y	Remove
128	Malus sp	Crabapple	6	Private		Remove
129	Aemolnchier	Serviceberry	6	Private		Remove
130	Malus sp	Crabapple	6	Private		Remove
131	Cornus	Dogwood	6	Private		Remove
132	Aemolnchier	Serviceberry	8	Private		Remove
133	Liriodendron tulipifera	Tulip Tree	6	Private		Remove
134	Zelkova	Zelkova	12	Private	Y	Remove
135	Zelkova	Zelkova	12	Private	Y	Remove
136	Betula	Birch	12	Private	Y	Remove
137	Pinus strobus	White Pine	12	Private	Y	Remove
138	Cornus	Dogwood	6	Private		Remove
139	gone		8	Private		Remove
140	Pinus strobus	White Pine	10	Private	Y	Remove
141	Acer	Maple	8	Private		Remove
142	Acer	Maple	8	Private		Remove
143	Acer	Maple	6	Private		Remove
144	Gleditsia	Honey Locust	4	Private		Remove
145	Acer rubrum	Maple	4	Private		Remove
146	Gleditsia	Honey Locust	3	Private		Remove
147	Gleditsia	Honey Locust	4	Private		Remove
148	Acer	Maple	10	Private	Y	Remove
149	Cotonegus	Hawthorn	6	Private		Remove
150	Pinus	Pine	8	Private		Remove
151	Pinus	Pine	6	Private		Remove
152	Pinus strobus	White Pine	10	Private	Y	Remove
153	Pinus strobus	White Pine	6	Private		Remove
154	Pinus strobus	White Pine	14	Private	Y	Remove
155	Pinus strobus	White Pine	6	Private		Remove
156	Cornus	Dogwood	6	Private		Remove
157	Malus sp	Crabapple	12	Private	Y	Remove
158	Acer	Maple	10	Private	Y	Remove
159	Acer	Maple	12	Private	Y	Remove
160	Quercus alifolia	Bear Oak	8	Private		Remove
161	Prunus	Cherry	12	Private	Y	Remove
162	Pinus strobus	White Pine	6	Private		Remove
163	Cotonegus	Hawthorn	6	Private		Remove
164	Acer rubrum	Maple	12	Private	Y	Remove
165	Chamaecyparis sp	A. White Cedar	6	Private		Remove
166	Chamaecyparis sp	A. White Cedar	6	Private		Remove
167	Ilex sp	Holly	8	Private		Remove
168	Thuja	Cedar	6	Private		Remove
169	Thuja	Cedar	6	Private		Remove
170	Cotonegus phoenopyrus	Hawthorn	16	Private	Y	Remove
171	Acer rubrum	Maple	16	Private	Y	Remove
172	Gleditsia	Honey Locust	4	Private		Remove
173	Chamaecyparis sp	A. White Cedar	4	Private		Remove
174	Malus sp	Crabapple	8	Private		Remove
175	Quercus coccinea	Scarlet Oak	24	Private	Y	Remove
176	Pinus strobus	White Pine	12	Private	Y	Protect
177	Chamaecyparis sp	A. White Cedar	6	Private		Protect
178	Pinus strobus	White Pine	14	Private	Y	Protect

179	Chamaecyparis sp	A. White Cedar	6	Private		Protect
180	Chamaecyparis sp	A. White Cedar	6	Private		Protect
181	Chamaecyparis sp	A. White Cedar	6	Private		Protect
182	Chamaecyparis sp	A. White Cedar	6	Private		Protect
183	Chamaecyparis sp	A. White Cedar	6	Private		Protect
184	Pinus strobus	White Pine	14	Private	Y	Protect
185	Chamaecyparis sp	A. White Cedar	6	Private		Protect
186	Betula nana	River Birch	6	Private		Remove
187	Chamaecyparis sp	A. White Cedar	10	Private	Y	Remove
188	Chamaecyparis sp	A. White Cedar	12	Private	Y	Remove
189	Malus sp	Crabapple	8	Private		Remove
190	Cornus florida	Dogwood	6	Private		Remove
191	Aemolnchier	Serviceberry	8	Private		Remove
192	Aemolnchier	Serviceberry	8	Private		Remove
193	Pinus Strobus	White Pine	8	Private		Remove
194	Pinus Strobus	White Pine	6	Private		Remove
195	Pinus Strobus	White Pine	6	Private		Remove
196	Pinus Strobus	White Pine	6	Private		Remove
197	Pinus Strobus	White Pine	6	Private		Remove
198	Pinus Strobus	White Pine	6	Private		Remove
199	Pinus Strobus	White Pine	6	Private		Remove
200	Pinus Strobus	White Pine	6	Private		Remove
201	Pinus Strobus	White Pine	6	Private		Remove
202	Pinus Strobus	White Pine	6	Private		Remove
203	Pinus Strobus	White Pine	6	Private		Remove
204	Pinus Strobus	White Pine	8	Private		Remove
205	Pinus Strobus	White Pine	8	Private		Remove
206	Pinus Strobus	White Pine	8	Private		Remove
207	Pinus Strobus	White Pine	8	Private		Remove
208	Pinus Strobus	White Pine	8	Private		Remove
209	Pinus Strobus	White Pine	10	Private	Y	Remove
210	Pinus Strobus	White Pine	10	Private	Y	Remove
211	Pinus Strobus	White Pine	10	Private	Y	Remove
212	Pinus Strobus	White Pine	10	Private	Y	Remove
213	Pinus Strobus	White Pine	10	Private	Y	Remove
214	Pinus Strobus	White Pine	8	Private		Remove
215	Pinus Strobus	White Pine	6	Private		Remove
216	Pinus Strobus	White Pine	10	Private	Y	Remove
217	Pinus Strobus	White Pine	8	Private		Remove
218	Pinus Strobus	White Pine	10	Private	Y	Remove
219	Pinus Strobus	White Pine	14	Public	Y	Protect
220	Pinus Strobus	White Pine	12	Public	Y	Protect
221	Acer	Maple	4	Public		Re-plant
222	Acer	Maple	4	Public		Re-plant
223	Acer	Maple	4	Public		Re-plant
224	Acer	Maple	4	Public		Re-plant
225	Acer	Maple	4	Public		Re-plant
226	Acer	Maple	4	Public		Re-plant
227	Acer	Maple	3	Public		Re-plant
228	Acer	Maple	3	Public		Re-plant
229	Pinus Strobus	White Pine	14	Public	Y	Protect
230	Pinus Strobus	White Pine	12	Public	Y	Protect
231	Pinus Strobus	White Pine	18	Public	Y	Protect
232	Acer	Maple	3	Public		Protect
233	Acer	Maple	3	Public		Protect
234	Acer	Maple	3	Public		Protect
235	Acer	Maple	3	Public		Protect
23						

NOTES

1. EIGHT HUNDRED SIXTY FOUR INCHES (864") OF TREES CALIPER TO BE REPLANTED ON PRIVATE PROPERTY.
2. NINETY SIX INCHES (96") OF TREE CALIPER TO BE REPLANTED ON FUTURE PUBLIC PROPERTY.
3. ALL EXISTING PUBLIC TREES TO BE PROTECTED AND/OR REPLANTED
4. TREES WILL BE INSPECTED AND, IF NECESSARY, TREATED BY A CERTIFIED ARBORIST ONCE A YEAR FOR FIVE YEARS.

	<i>Gleditsia triacanthos</i> <i>Carpinus caroliniana</i> <i>Acer rubrum</i>	Shademaster Honey Locust American Hornbeam Red Maple		<i>Acer griseum</i> <i>Amelanchier canadensis</i> <i>Rhus glabra</i> <i>Magnolia virginiana</i>	Paperbark Maple Service Berry Smooth Sumac Sweetbay Magnolia
	<i>Acer rubrum</i> 'Armstrong' <i>Platanus occidentalis</i> <i>Quercus phellos</i>	Armstrong Red Maple American Sycamore Willow Oak		<i>Acer saccharum</i> <i>Liquidambar styraciflua</i> <i>Quercus palustris</i>	Suger Maple Sweetgum Pin Oak
	<i>Crataegus viridis</i> 'Winter King' <i>Cercis canadensis</i> var. <i>alba</i> <i>Prunus cerasifera</i> <i>Diospyros virginiana</i>	Winter King Hawthorn White Eastern Redbud Flowering Purple Plum Common Persimmon		<i>Juniperus virginiana</i> <i>Pinus virginiana</i>	Eastern Red Cedar Virginia Pine
				* Existing White Pines and Hedge	

Total DBH of Significant Trees: 1354"
 DBH of Significant Trees Saved: 542"
 DBH to Mitigate: 812"
 DBH of Trees Replaced: 342 x 3" = 1026"





SHADEMASTER HONEYLOCUST

Gleditsia triacanthos

Height	50-70'
Spread	35-50'
Form	Vase/Upright
Native	No
Value	Low
Salt	Tolerant
Pollution	Tolerant



AMERICAN HORNBEAM

Carpinus caroliniana

Height	8-12'
Spread	12-15'
Form	Pyramidal
Native	Yes
Value	Low
Salt	
Pollution	Tolerant



ARMSTRONG RED MAPLE

Acer rubrum 'Armstrong'

Height	50-60'
Spread	15-25'
Form	Columnar
Native	Yes
Value	High
Salt	
Pollution	



AMERICAN SYCAMORE

Platanus occidentalis

Height	75-100'
Spread	50-70'
Form	Rounded
Native	Yes
Value	
Salt	
Pollution	Tolerant



WILLOW OAK

Quercus phellos

Height	40-75'
Spread	25-50'
Form	Crown
Native	Yes
Value	High
Salt	Tolerant
Pollution	Tolerant



PIN OAK

Quercus palustris

Height	50-70'
Spread	40-60'
Form	Rounded
Native	Yes
Value	Very High
Salt	Tolerant
Pollution	Tolerant



PAPERBARK MAPLE

Acer griseum

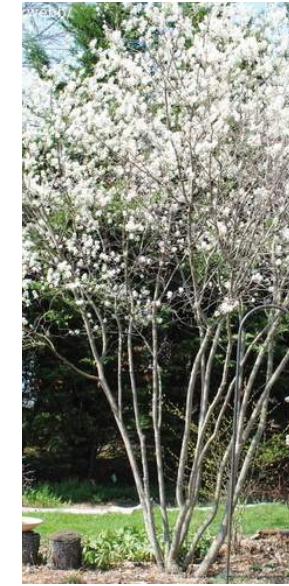
Height	20-30'
Spread	15-25'
Form	Oval to Rounded
Native	No
Value	Very High
Salt	
Pollution	



WINTER KING HAWTHORN

Crataegus viridis 'Winter King'

Height	25-30'
Spread	25-30'
Form	Rounded
Native	No
Value	Very High
Salt	
Pollution	



SHADBLOW SERVICEBERRY

Amelanchier canadensis

Height	24-40'
Spread	20'
Form	Vase
Native	Yes
Value	High
Salt	
Pollution	



REDBUD

Cercis canadensis var. alba

Height	15-25'
Spread	20-30'
Form	Flat Top/Rounded
Native	Yes
Value	Low
Salt	
Pollution	



PURPLE PLUM

Prunus cerasifera

Height	12-20'
Spread	20-30'
Form	Vase
Native	No
Value	High
Salt	
Pollution	



Acer saccharum

Height	35-50'
Spread	50-75'
Form	Round
Native	Yes
Value	High
Salt	
Pollution	Tolerant



SWEETGUM

Liquidambar styraciflua

Height	60-75'
Spread	35-60'
Form	Pyramidal
Native	Yes
Value	Low
Salt	
Pollution	



VIRGINIA PINE

Pinus virginiana

Height	75-100'
Spread	50-75'
Form	Pyramidal
Native	Yes
Value	
Salt	
Pollution	



EASTERN RED CEDAR

Juniperus virginiana

Height	50-75'
Spread	35-50'
Form	Pyramidal
Native	Yes
Value	Very High
Salt	
Pollution	



SMOOTH SUMAC

Rhus glabra

Height	7-15'
Spread	10-20'
Form	Shrub-Small Tree
Native	Yes
Value	High
Salt	
Pollution	



SWEETBAY MAGNOLIA

Magnolia virginiana

Height	12-20'
Spread	10-20'
Form	Rounded
Native	Yes
Value	High
Salt	Tolerant
Pollution	Tolerant



COMMON PERSIMMON

Diospyros virginiana

Height	50-75'
Spread	30-50'
Form	Round
Native	Yes
Value	High
Salt	
Pollution	