



POTENTIAL PEDESTRIAN & BIKE CONNECTION TO FAWCETT STREET

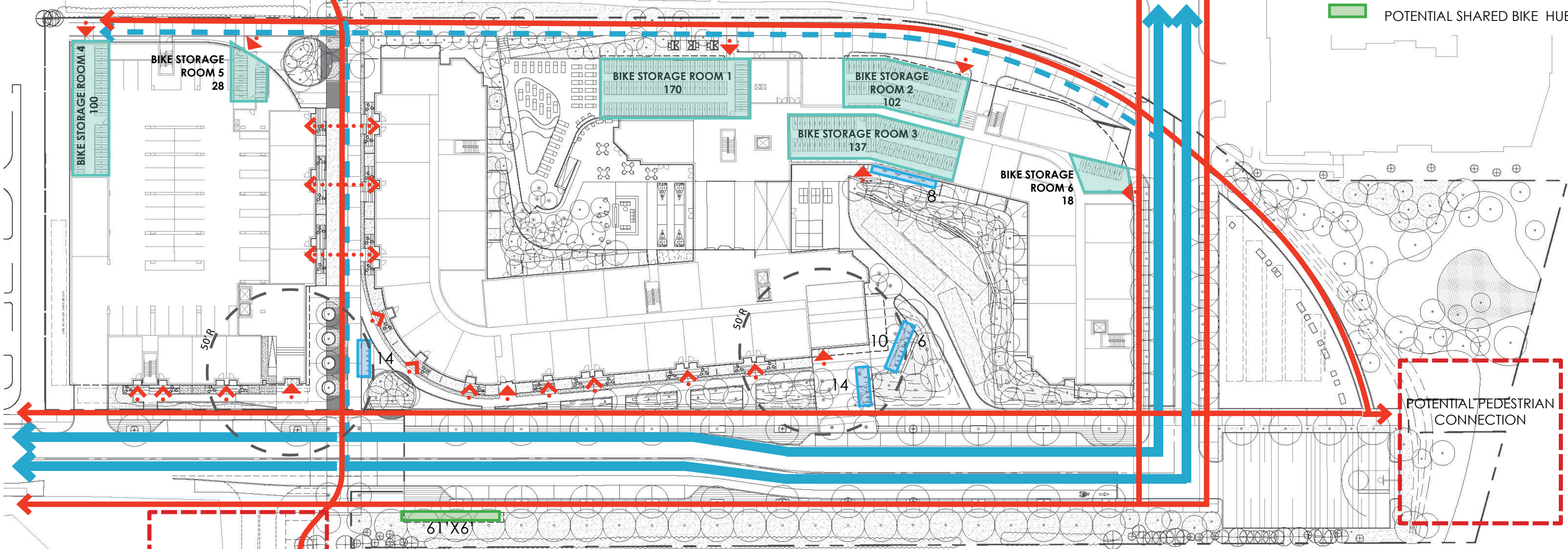


AERIAL OF ADJACENT PROPERTY MEWS CONNECTION



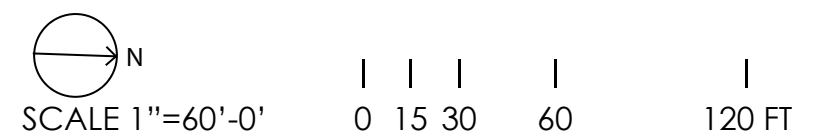
SIDE YARDS FROM FAWCETT STREET

- PEDESTRIAN
- BIKE
- - - BIKE REDUCED SPEED
- ▶ MAIN ENTRY
- ◀ ··· ··· ▶ PRIVATE ENTRY
- TEMPORARY BIKE PARKING
- LONG-TERM BIKE PARKING
- POTENTIAL SHARED BIKE HUB

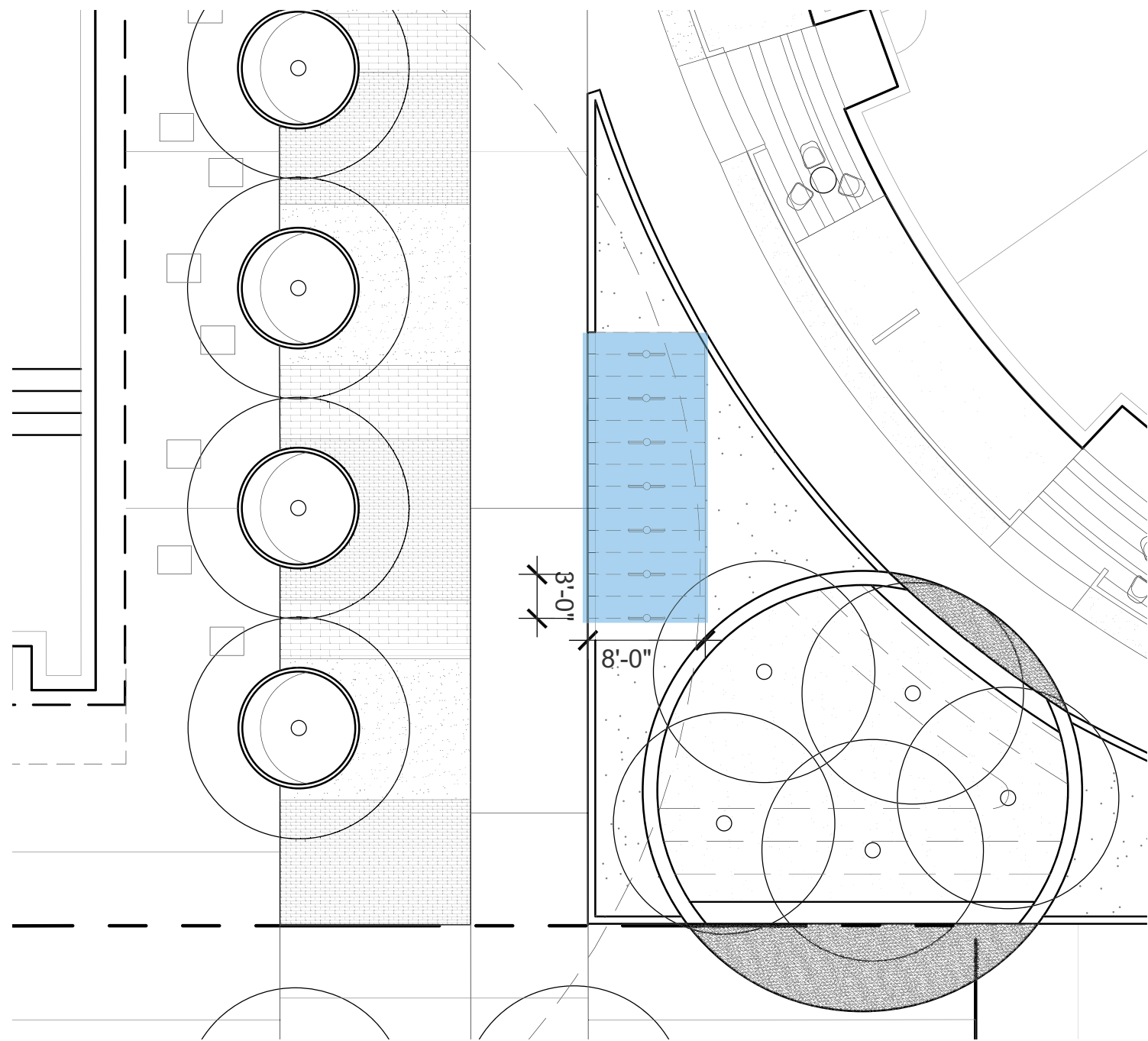


POTENTIAL PEDESTRIAN CONNECTION

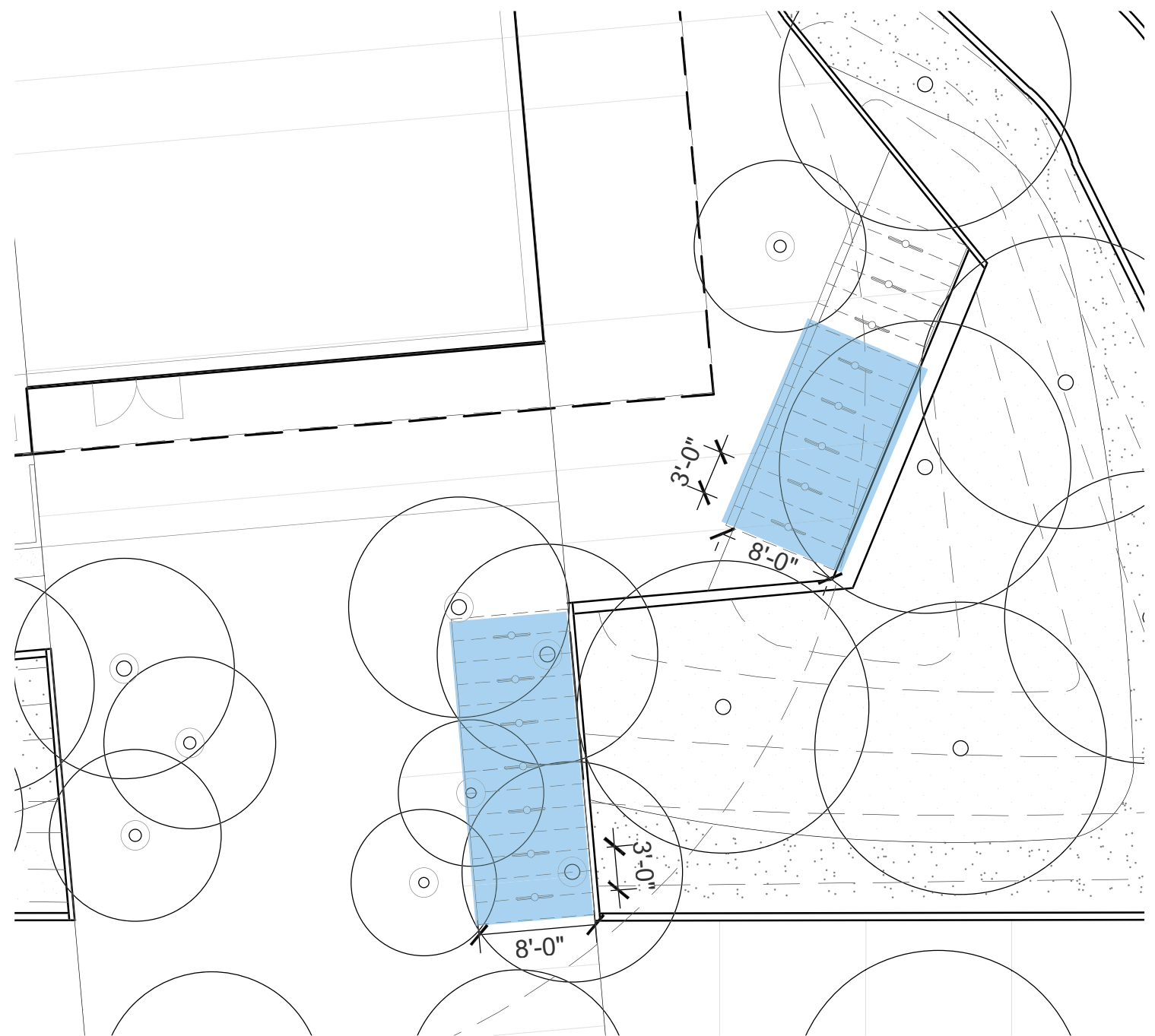
POTENTIAL TERMINAL RD. & PEDESTRIAN CONNECTION



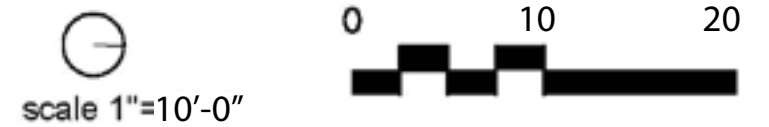




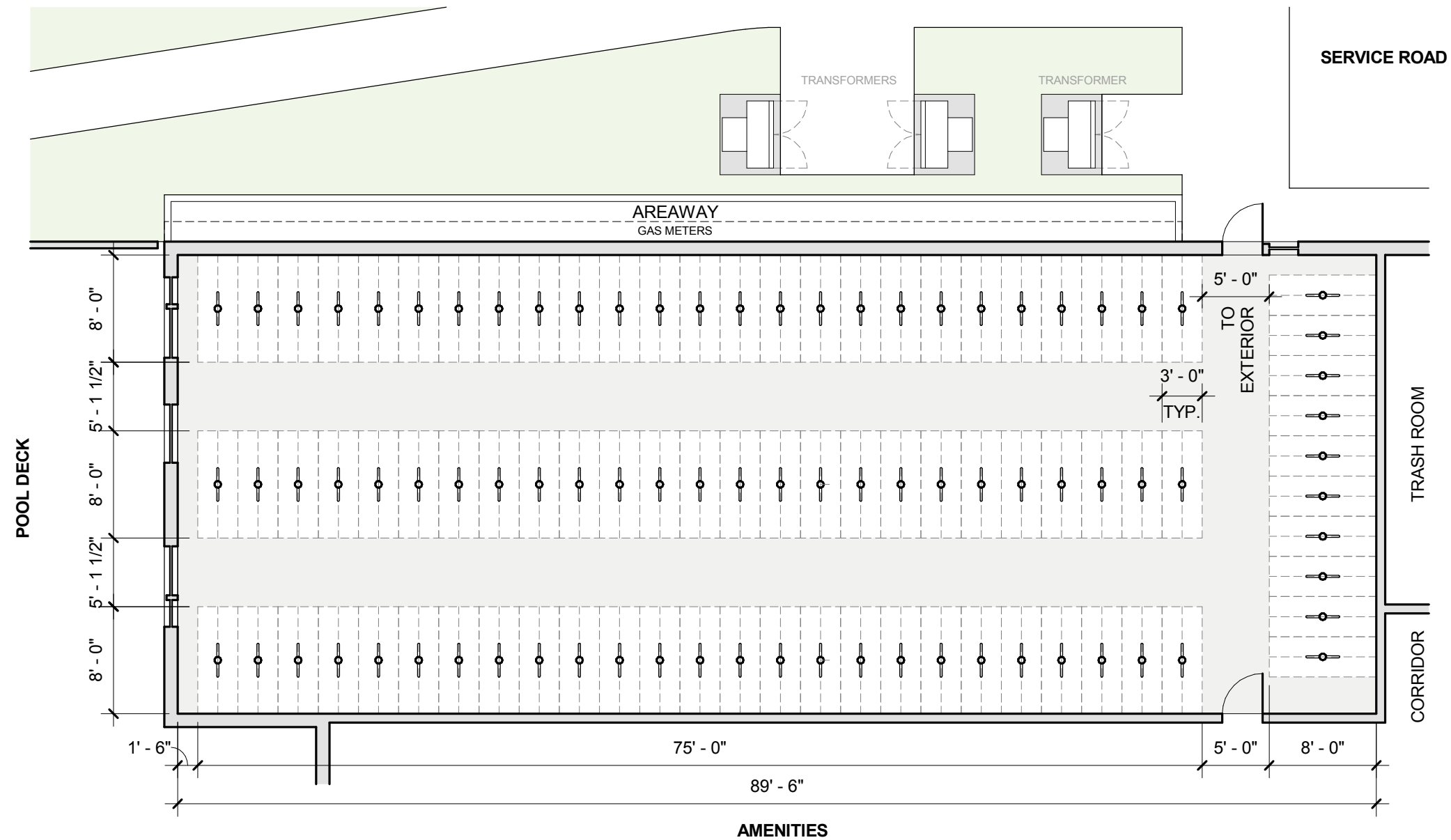
**PLAN A** MEWS BUILDING 1 ENTRY - 14 SPACES



**PLAN B** WHEELER STREET BUILDING 2 ENTRY - 30 SPACES (24 WITH IN 50' OF ENTRY)

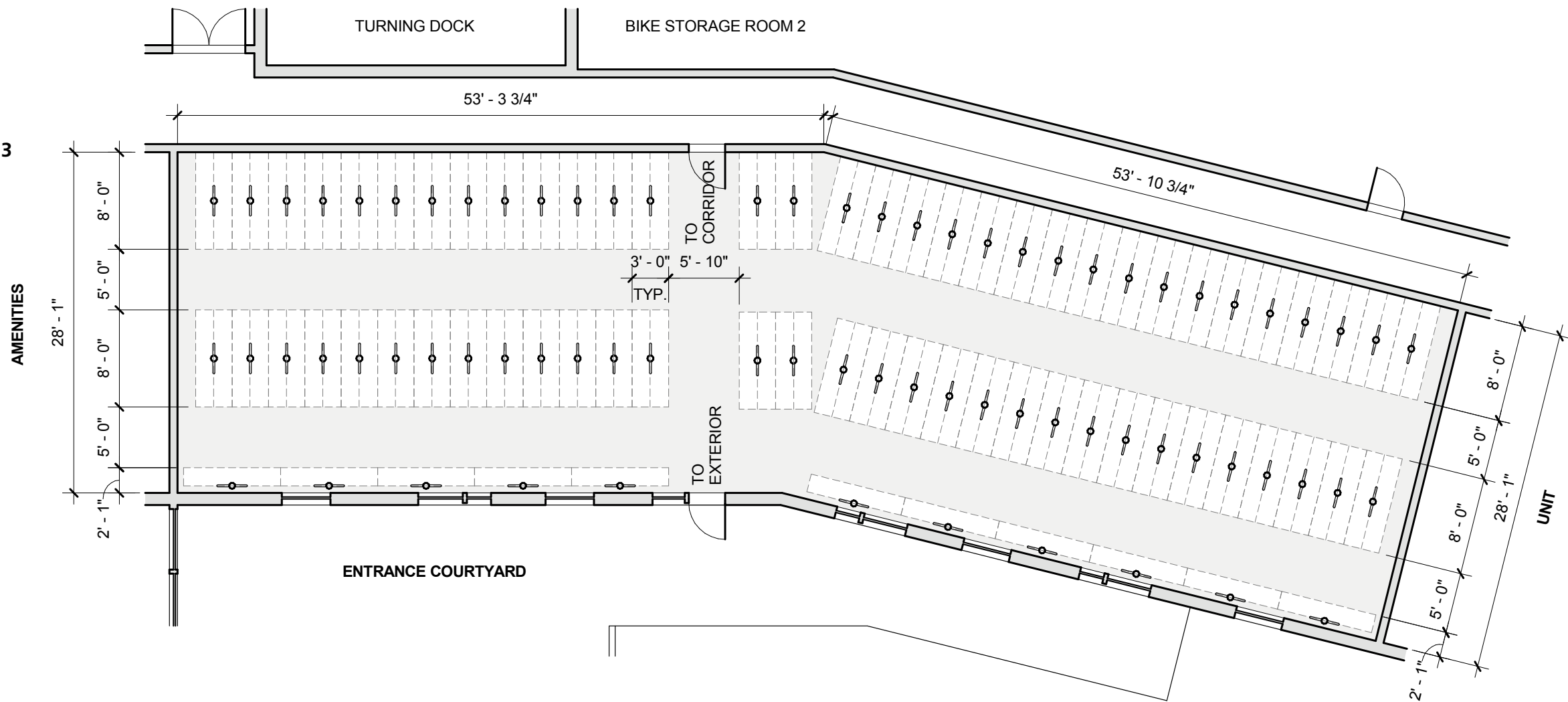


**BIKE STORAGE ROOM 1**  
 170 SPACES  
 1" = 10'

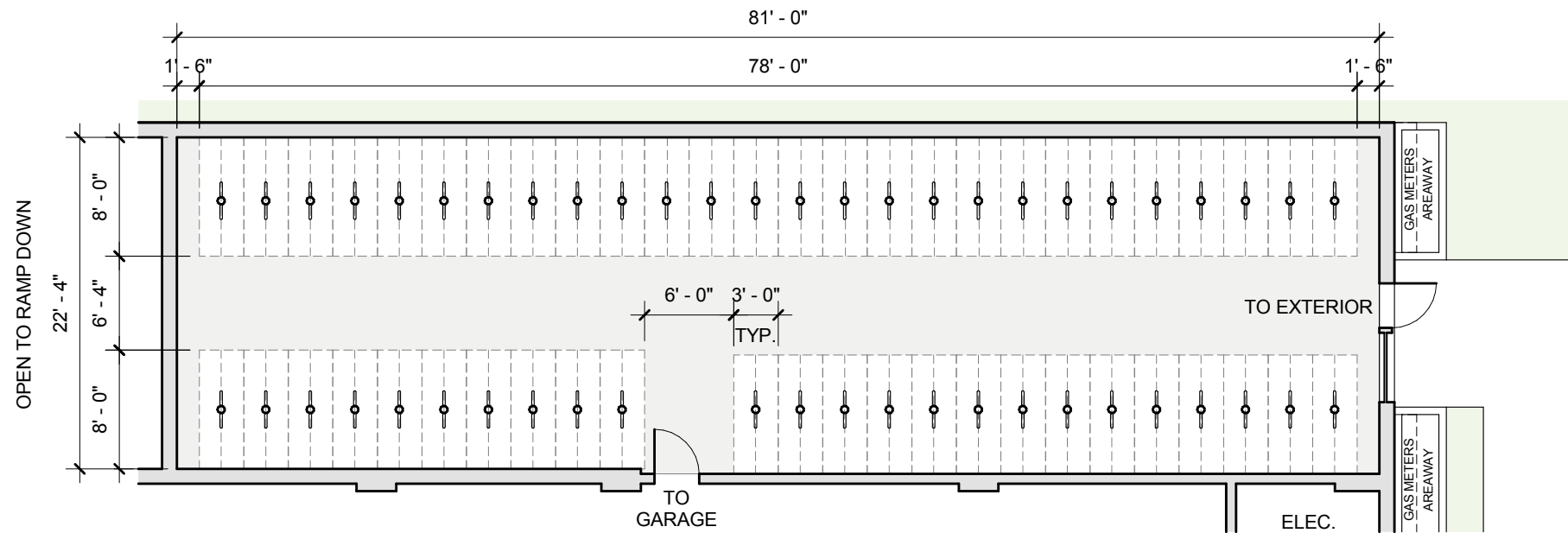




**BIKE STORAGE ROOM 3**  
137 SPACES  
1" = 10'



**BIKE STORAGE ROOM 4**  
100 SPACES  
1" = 10'





# Legend

- Building Envelope
- Poured in Place Concrete
- Landscaped Area
- Unit Pavers
- Land to be Subject to Restricted Open Space Covenant = ±27,500 sf

