



VASSAR STREET UNDERGRADUATE RESIDENCE HALL

MICHAEL MALTZAN ARCHITECTURE | DIMELLA SHAFFER
VOLUME II 2017.11.08

EXISTING CONDITIONS

5

ARCHITECTURE

13

LANDSCAPE

39

URBAN DESIGN VIEWS

58

APPENDIX

65

CONTENTS

EXISTING CONDITIONS

1. Site Survey
2. Neighborhood Context Map
3. Campus Context Map
4. Immediate Context
5. Site Photos

ARCHITECTURE

6. Aerial Context view
7. Massing
8. Site Plan
9. Dimensional Site Plan
10. First Floor Levels
11. Floor Plans: L2 - L5, Roof
12. Urban Context Sections
13. Building Elevations
14. Enlarged Facade Elevations

LANDSCAPE

15. Landscape Concept Diagram
16. Landscape Proposal
17. Landscape Key Plan
18. Enlarged Landscape Plan: Flex/ Service Plaza
19. Enlarged Landscape Plan: Social Courtyard
20. Enlarged Landscape Plan: Entry Forecourt
21. Enlarged Landscape Plan: Crossroads Plaza
22. Enlarged Landscape Plan: Streetscape
23. Green Infrastructure and Paving Plan
24. Site Furniture Plan
25. Landscape Lighting Plan
26. Planting Plan: Trees
27. Pedestrian and Bicycle Circulation Plan
28. Long Term and Short Term Bicycle Parking Plans
29. Grading and Drainage Plan
30. Utilities Plan

URBAN DESIGN VIEWS

31. Elevated Perspective
32. Elevated Perspective (Night)
33. North Facade from Railway Tracks
34. View to Northeast at Pacific Crossing
35. Entry Forecourt
36. Social Courtyard from Vassar Street
37. East Plaza from Vassar Street

APPENDIX

38. Shadow Studies
39. Existing Tree Plan



MICHAEL
MALTZAN
ARCHITECTURE

DiMella
Shaffer
Architecture | Interior Design | Planning

Guy Nordenson and Associates

SIMPSON GUMPERTZ & HEGER



Engineering of Structures
and Building Enclosures

WALSH BROTHERS
Since 1901
Promises kept from one generation to the next

SSOLS


Nitsch Engineering


Steven Winter
Associates, Inc.

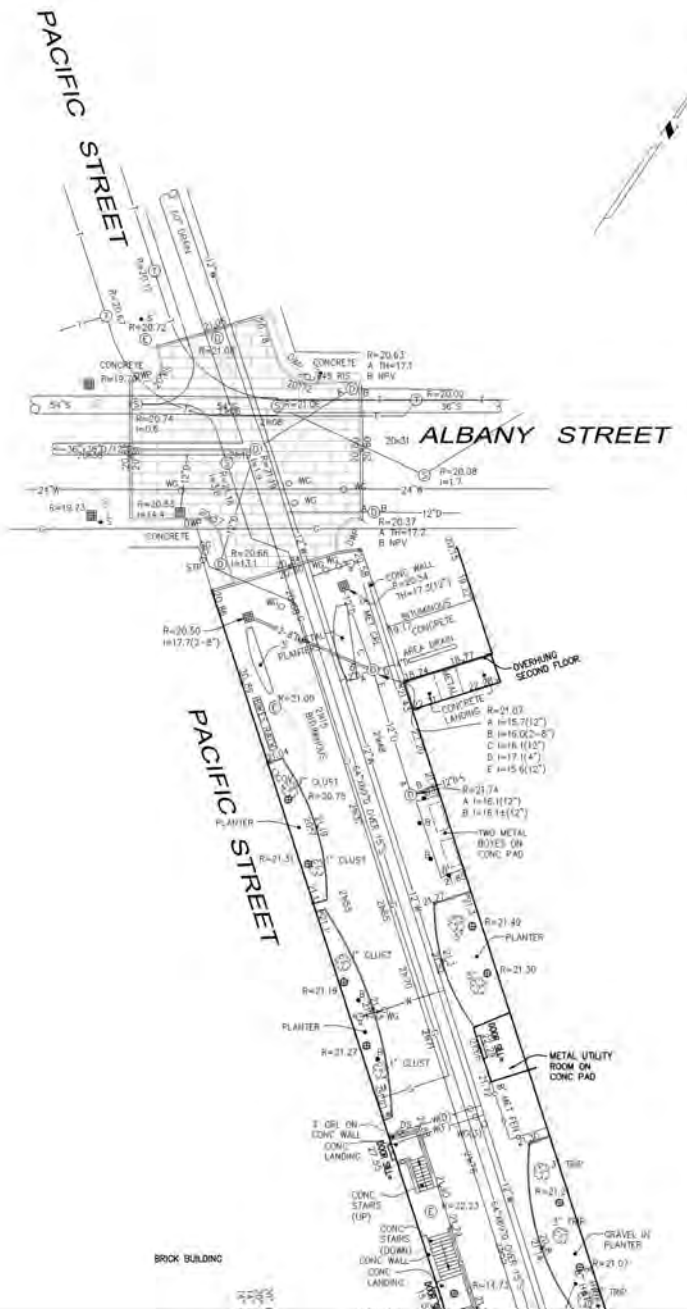
WSP

 vhb®

EXISTING CONDITIONS

LEGEND

- ☉ CATCH BASIN
- ⊙ CABLE TELEVISION MANHOLE
- ⊙ DRAIN MANHOLE
- ⊙ ELECTRIC MANHOLE
- ⊙ MISCELLANEOUS MANHOLE
- ⊙ SEWER MANHOLE
- ⊙ TELEPHONE MANHOLE
- ⊙ WATER MANHOLE
- ⊙ GAS SHUT-OFF
- ⊙ WATER SHUT-OFF
- ⊙ GAS GATE
- ⊙ WATER GATE
- ⊙ IRRIGATION CONTROL VALVE
- CLEANOUT
- ⊙ FIRE HYDRANT
- ⊙ DOWN SPOUT
- ⊙ UTILITY POLE
- ⊙ UTILITY POLE WITH CONDUIT LINE TO GROUND
- ⊙ LIGHT POLE
- ⊙ LIGHT BOLLARD
- ⊙ LANDSCAPE LIGHT
- ⊙ HAND HOLE
- ⊙ TRASH CAN
- ⊙ FIRE ALARM CALL BOX
- ⊙ METAL POST
- ⊙ CONCRETE POST
- ⊙ PARKING METER
- ⊙ SIGN POST
- ⊙ TRAFFIC MAST ARM
- ⊙ TRAFFIC SIGNAL
- ⊙ PEDESTRIAN SIGNAL
- ⊙ DECIDUOUS TREE WITH TRUNK DIAMETER
- ⊙ CONIFEROUS TREE WITH TRUNK DIAMETER
- HANDICAP PARKING
- SPOT ELEVATION
- CHAIN LINK FENCE
- RETAINING CONCRETE BERM
- SLOPED GRANITE CURB
- VERTICAL GRANITE CURB
- VERTICAL CONCRETE CURB
- WHEELCHAIR RAMP
- LANDSCAPE TIMBER
- RIM ELEVATION EQUALS
- INVERT ELEVATION EQUALS
- TOP OF HOOD ELEVATION EQUALS
- NO PIPES VISIBLE
- TOP OF WATER
- TRAFFIC CONTROL BOX
- UNDERGROUND LOOP DETECTOR
- DETECTABLE WARNING PANEL
- TOP OF WALL ELEVATION
- UNDERGROUND CABLE TELEVISION LINE
- UNDERGROUND DRAIN LINE
- UNDERGROUND ELECTRIC LINE
- UNDERGROUND GAS LINE
- UNDERGROUND SEWER LINE
- UNDERGROUND TELEPHONE LINE
- UNDERGROUND WATER LINE
- OVERHEAD WIRES
- MONITORING WELL
- BENCH MARK
- SOLAR LIGHT FLUSH WITH CONCRETE
- EMERGENCY PHONE BOOTH



UTILITY INFORMATION STATEMENT

1. THE SUB-SURFACE UTILITY INFORMATION SHOWN HEREON IS COMPILED BASED ON FIELD SURVEY INFORMATION, RECORD INFORMATION AS SUPPLIED BY THE APPROPRIATE UTILITY COMPANIES, AND PLAN INFORMATION SUPPLIED BY THE CLIENT. IF ANY THEREFORE WE CANNOT GUARANTEE THE ACCURACY OF SAID COMPILED SUB-SURFACE INFORMATION TO ANY CERTAIN DEGREE OF STATED TOLERANCE. ONLY PHYSICALLY LOCATED SUB-SURFACE UTILITY FEATURES FALL WITHIN NORMAL STANDARD OF CARE ACCURACIES.
2. THE LOCATIONS OF UNDERGROUND PIPES, CONDUITS, AND STRUCTURES HAVE BEEN DETERMINED FROM SAID INFORMATION, AND ARE APPROXIMATE ONLY. COMPILED LOCATIONS OF ANY UNDERGROUND STRUCTURES, NOT VISIBLY OBSERVED AND LOCATED, CAN VARY FROM THEIR ACTUAL LOCATIONS.
3. ADDITIONAL BURIED UTILITIES/STRUCTURES MAY BE ENCOUNTERED.
4. THE STATUS OF UTILITIES, WHETHER ACTIVE, ABANDONED, OR REMOVED, IS AN UNKNOWN CONDITION AS FAR AS OUR COMPILATION OF THIS INFORMATION.
5. IT IS INCUMBENT UPON INDIVIDUALS USING THIS INFORMATION TO UNDERSTAND THAT COMPILED UTILITY INFORMATION IS NOT EXACT, AND IS SUBJECT TO CHANGE BASED UPON VARYING PLAN INFORMATION RECEIVED AND ACTUAL LOCATIONS.
6. THE ACCURACY OF MEASURED UTILITY INVERTS AND PIPE SIZES IS SUBJECT TO FIELD CONDITIONS, THE ABILITY TO MAKE VISUAL OBSERVATIONS, DIRECT ACCESS TO THE VARIOUS ELEMENTS AND OTHER MATTERS.
7. THE PROPER UTILITY ENGINEERING/COMPANY SHOULD BE CONSULTED AND THE ACTUAL LOCATIONS OF SUBSURFACE STRUCTURES SHOULD BE VERIFIED IN THE FIELD (V.I.F.) BEFORE PLANNING FUTURE CONNECTIONS. CONTACT THE DIG SAFE CALL CENTER AT 1-888-344-7233, SEVENTY-TWO HOURS PRIOR TO EXCAVATION, BLASTING, GRADING, AND/OR PAVING.

NOTES

1. THIS DOCUMENT IS AN INSTRUMENT OF SERVICE OF NITSCH ENGINEERING. IT IS ISSUED TO MIT FOR PURPOSES RELATED DIRECTLY AND SOLELY TO NITSCH ENGINEERING'S SCOPE OF SERVICES UNDER CONTRACT WITH MIT FOR LAND SURVEYING SERVICES. ANY USE OR REUSE OF THIS DOCUMENT FOR ANOTHER PROJECT OR FOR ANY OTHER PURPOSES UNRELATED DIRECTLY AND SOLELY TO SAID CONTRACT AND PROJECT SHALL BE AT THE USER'S SOLE AND EXCLUSIVE RISK AND LIABILITY, INCLUDING LIABILITY FOR VIOLATION OF COPYRIGHT LAWS, UNLESS WRITTEN AUTHORIZATION IS GIVEN THEREFOR BY NITSCH ENGINEERING.
2. THE PURPOSE OF THIS PLAN IS TO SHOW EXISTING CONDITIONS AS THE RESULT OF AN ON-THE-GROUND INSTRUMENT SURVEY WHICH OCCURRED BETWEEN 12/27/2016 AND 7/12/2017.
3. FOR TITLE TO THE LOTS BETWEEN THE OLD VASSAR STREET LINE AND THE CURRENT STREET LINE SEE BOOK 57051 PAGE 495. THESE LOTS ARE A PORTION OF PARCEL 1 AS RECORDED IN PLAN 404 OF 1993 AS ALTERED BY THE ACCEPTANCE PLAN FOR A PORTION OF VASSAR STREET AS RECORDED IN PLAN 421 OF 2011.
4. HORIZONTAL AND VERTICAL DATUM FOR THIS PLAN IS BASED ON MIT PROVIDED CONTROL.
5. THE INFORMATION CONTAINED ON THE DISK OR ELECTRONIC DRAWING FILE ACCOMPANYING THIS PLAN MUST BE COMPARED TO THE SEALED AND SIGNED HARD COPY OF THE PLAN TO ENSURE THE ACCURACY OF ALL INFORMATION AND TO ENSURE NO CHANGES, ALTERATIONS, OR MODIFICATIONS HAVE BEEN MADE. RELIANCE SHALL NOT BE MADE ON A DOCUMENT TRANSMITTED BY COMPUTER OR OTHER ELECTRONIC MEANS UNLESS FIRST COMPARED TO THE ORIGINAL SEALED DOCUMENT ISSUED AT THE TIME OF THE SURVEY. DUE TO THE CRITICAL NATURE OF SURVEYING, DATA ACQUISITION, AND AUTOCAD PLAN DEVELOPMENT, IF CRITICAL DIMENSIONAL INFORMATION IS NEEDED AND IS NOT SPECIFICALLY SHOWN ON THE ELECTRONIC DRAWING FILE, PLEASE CONTACT NITSCH ENGINEERING.



Dennis R. Segura
 DENNIS R. SEGURA
 MASSACHUSETTS REG. NO. 37058
 REGISTERED PROFESSIONAL LAND SURVEYOR

08/09/2017 DATE

MATCHLINE
SEE SHEET EX-3

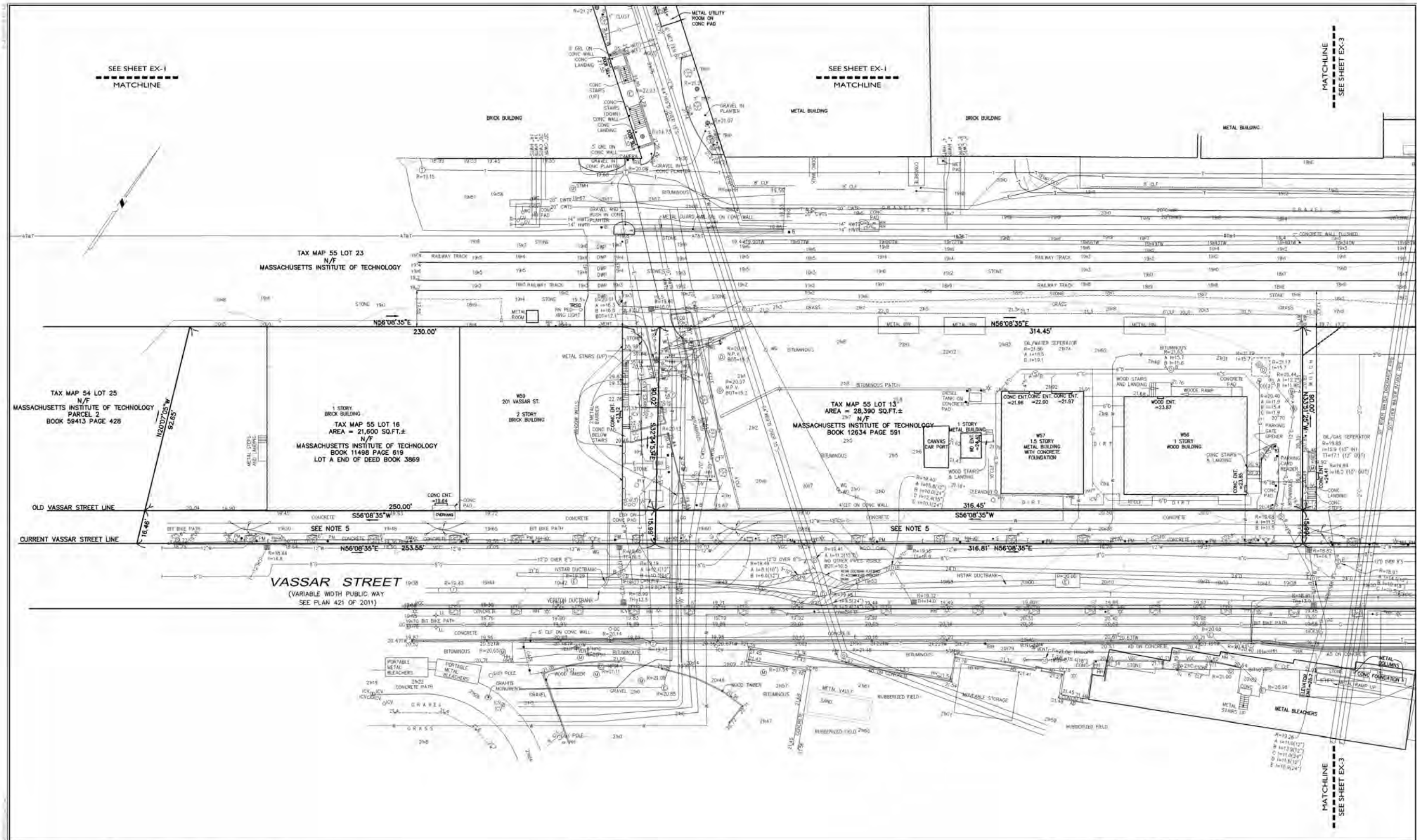
Nitsch Engineering
 www.nitscheng.com
 2 Center Plaza, Suite 430
 Boston, MA 02108
 T: (617) 338-0063
 F: (617) 338-6472

- Civil Engineering
- Land Surveying
- Transportation Engineering
- Structural Engineering
- Green Infrastructure
- Planning
- GIS

PROJECT #	11808	REV.		COMMENTS	
FILE:	11808_TOP01.dwg	REVISIONS			
SCALE:	1"=20'				
DATE:	7/31/2017				
PROJECT MANAGER:	DRS				
FIELD BOOK:	658				
DRAFTED BY:	MRD/JCC				
CHECKED BY:					

EXISTING CONDITIONS PLAN
 BUILDINGS W45, W56, W57, AND W59
 MASSACHUSETTS INSTITUTE OF TECHNOLOGY WEST CAMPUS
 PREPARED FOR
 MASSACHUSETTS INSTITUTE OF TECHNOLOGY
 DEPARTMENT OF FACILITIES
 195 ALBANY STREET, NW23-100, CAMBRIDGE, MA 02139

SHEET
EX-1
 OF 3 REV.




www.nitscheng.com
 2 Center Plaza, Suite 430
 Boston, MA 02108
 T: (617) 338-0063
 F: (617) 338-6472

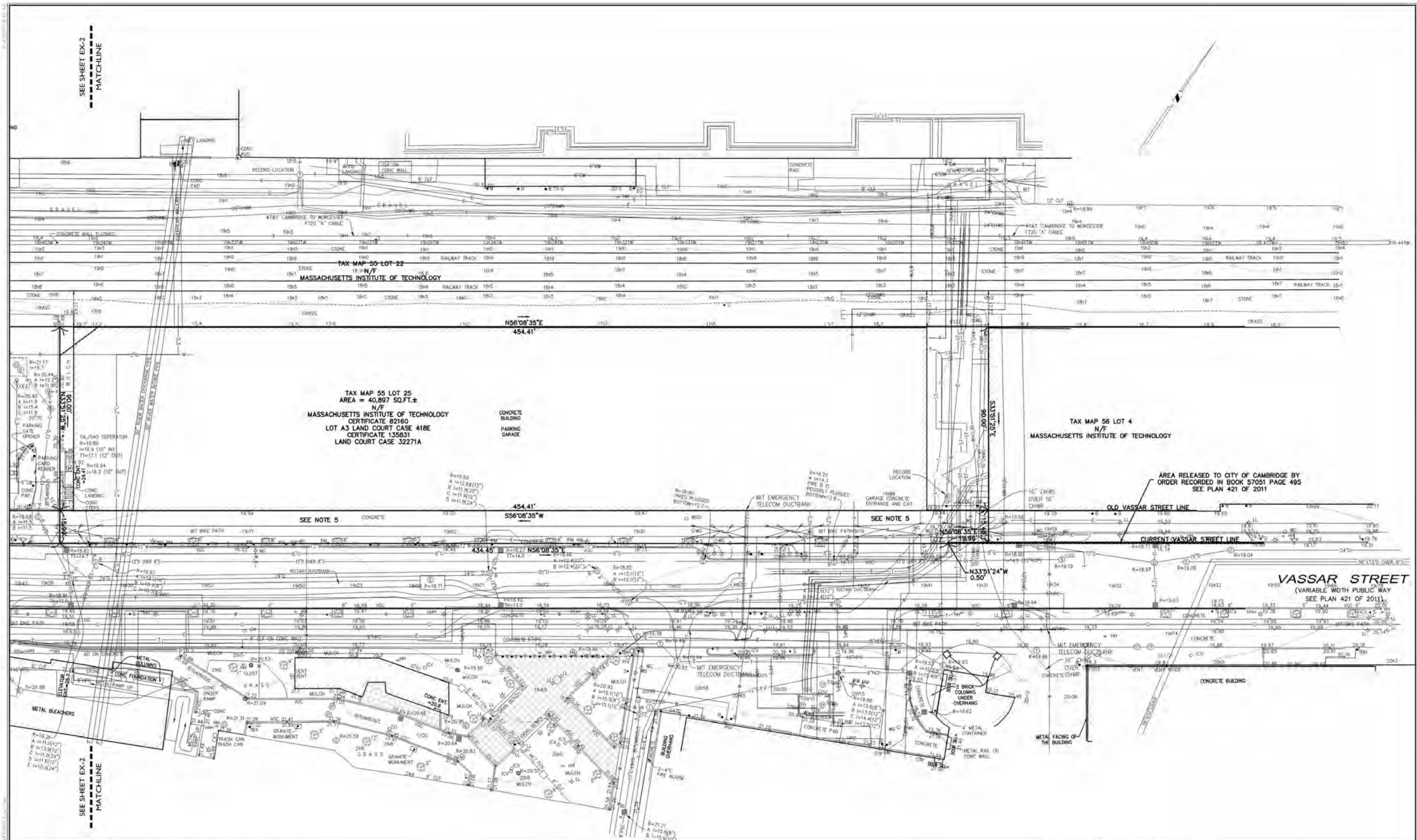
- Civil Engineering
- Land Surveying
- Transportation Engineering
- Structural Engineering
- Green Infrastructure
- Planning
- GIS

PROJECT # 11808
 FILE: 11808_T0P01.dwg
 SCALE: 1"=20'
 DATE: 7/31/2017
 PROJECT MANAGER: DRS
 FIELD BOOK: 656
 DRAFTED BY: MRD/JDC
 CHECKED BY:

REV.	COMMENTS	DATE

EXISTING CONDITIONS PLAN
 BUILDINGS W45, W56, W57, AND W59
 MASSACHUSETTS INSTITUTE OF TECHNOLOGY WEST CAMPUS
 PREPARED FOR:
 MASSACHUSETTS INSTITUTE OF TECHNOLOGY
 DEPARTMENT OF FACILITIES
 195 ALBANY STREET, NW23-100, CAMBRIDGE, MA 02139

SHEET:
EX-2
 OF 3
 REV.




www.nitscheng.com
 2 Center Plaza, Suite 430
 Boston, MA 02108
 T: (617) 338-0063
 F: (617) 338-6472

- Civil Engineering
- Land Surveying
- Transportation Engineering
- Structural Engineering
- Green Infrastructure
- Planning
- GIS

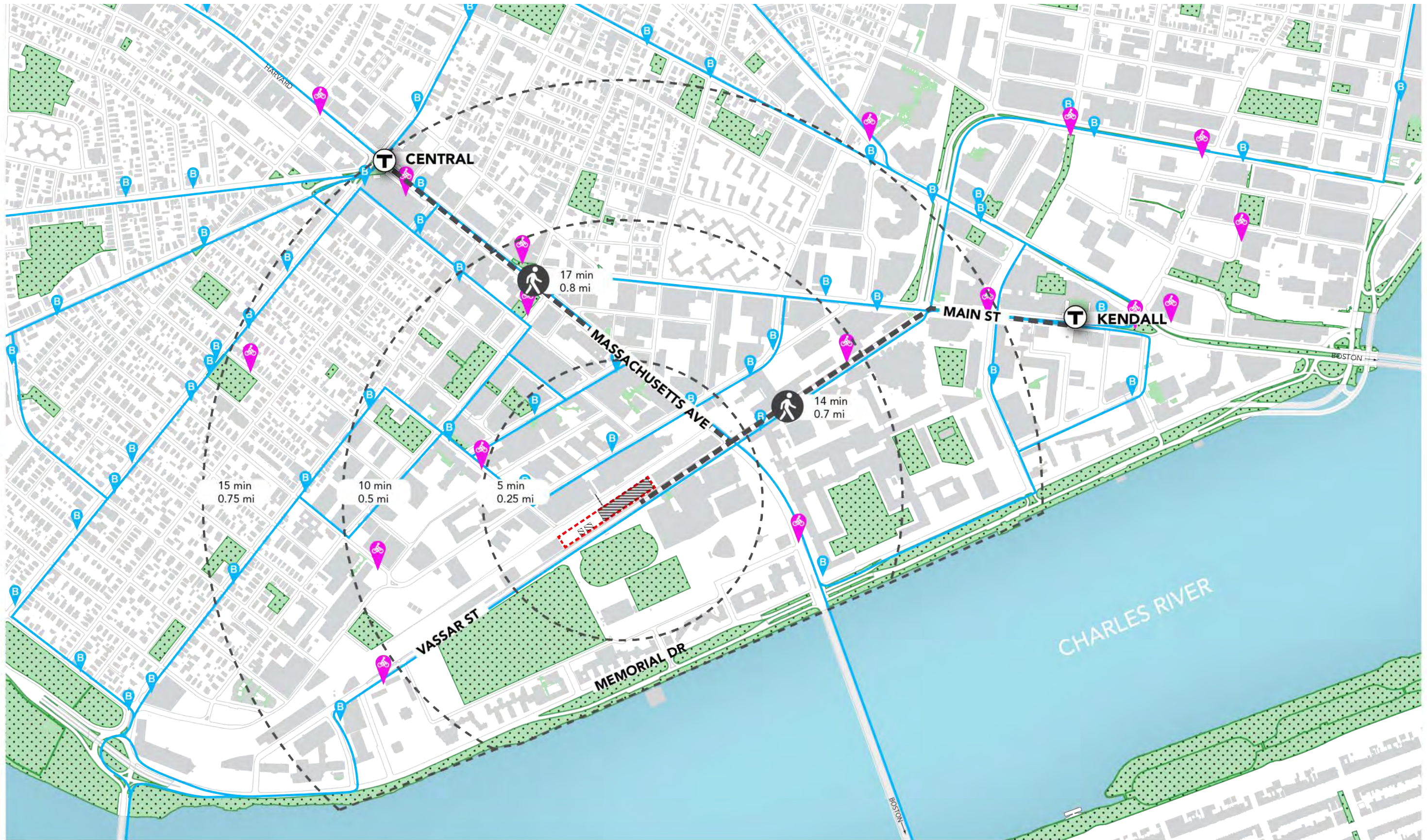
PROJECT # 11808
 FILE: 11808_TOPFD1.dwg
 SCALE: 1"=20'
 DATE: 7/31/2017
 PROJECT MANAGER: DRS
 FIELD BOOK: 658
 DRAFTED BY: MRD/JCC
 CHECKED BY:

REV.	COMMENTS	DATE

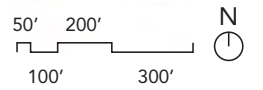
EXISTING CONDITIONS PLAN
 BUILDINGS W45, W56, W57, AND W59
 MASSACHUSETTS INSTITUTE OF TECHNOLOGY WEST CAMPUS

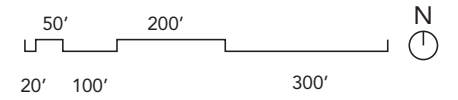
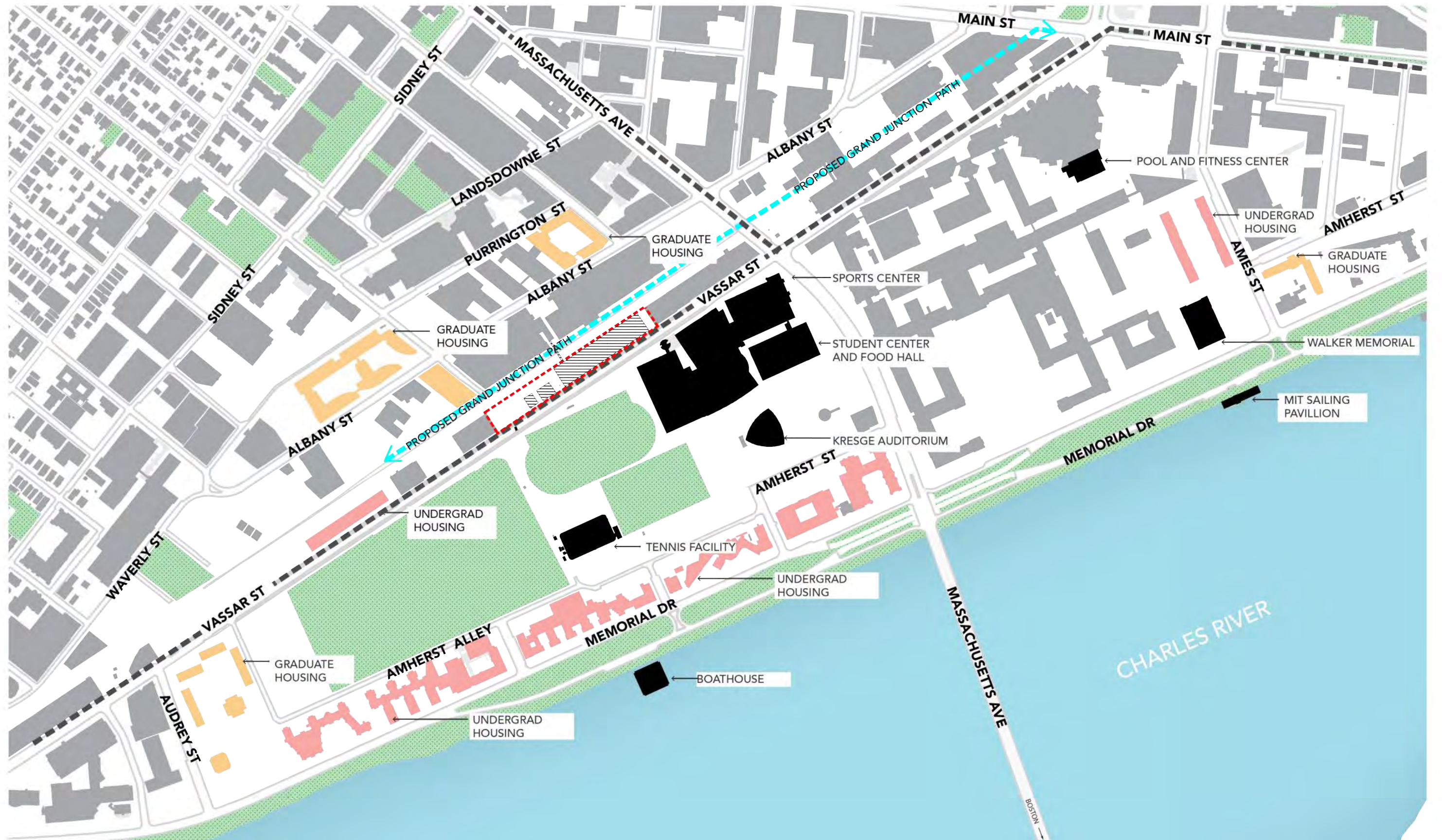
PREPARED FOR:
MASSACHUSETTS INSTITUTE OF TECHNOLOGY
 DEPARTMENT OF FACILITIES
 195 ALBANY STREET, NW23-100, CAMBRIDGE, MA 02138

SHEET: **EX-3**
 OF 3 REV.



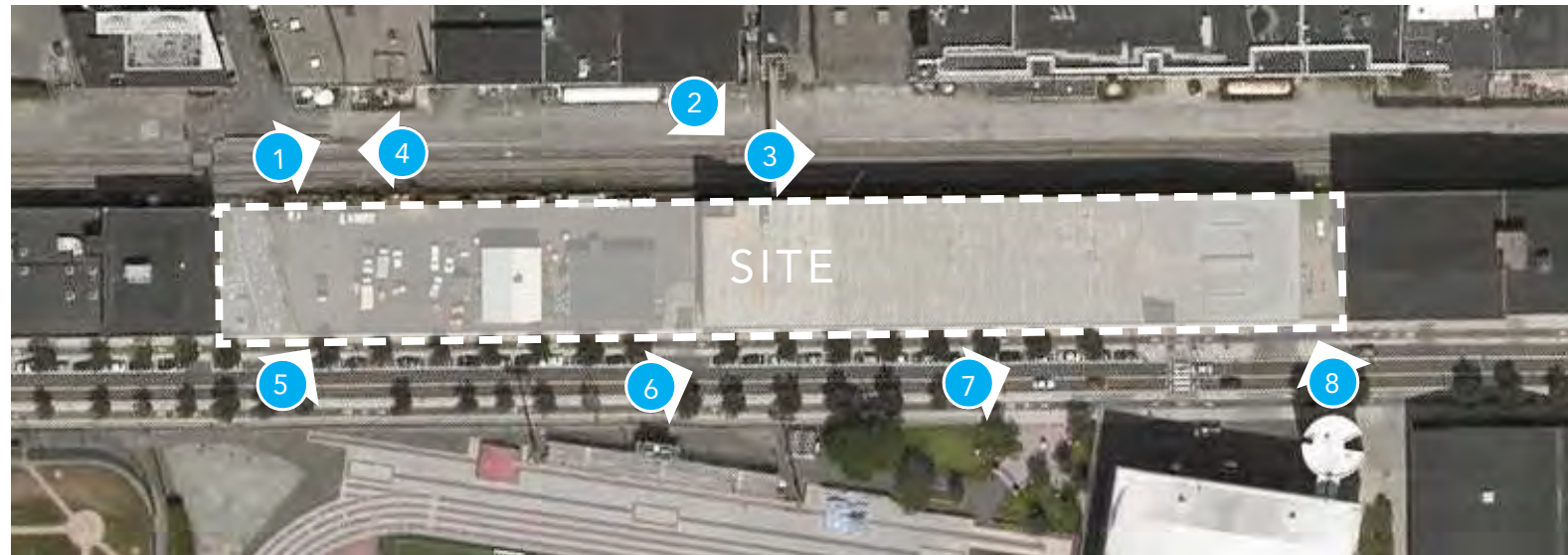
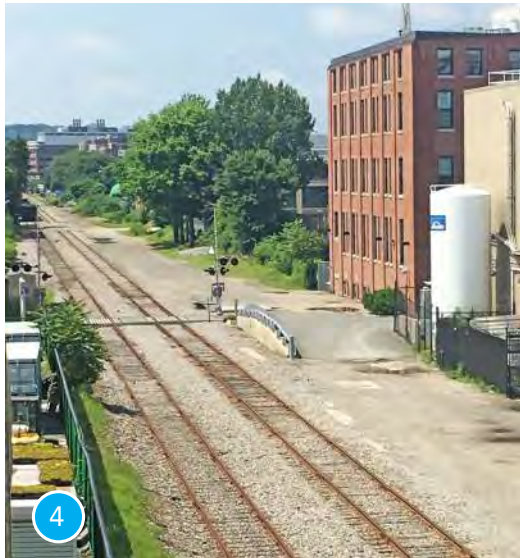
-  MBTA TRAIN STATION
-  HUBWAY BIKE SHARES
-  BUS STOP
-  EXISTING SITE
-  DEMOLITION
-  PUBLIC SPACES





MIT VASSAR STREET RESIDENCE | CAMPUS CONTEXT





ARCHITECTURE



TANG HALL

SIMMONS HALL

NEW VASSAR STREET
UNDERGRADUATE
RESIDENCE HALL

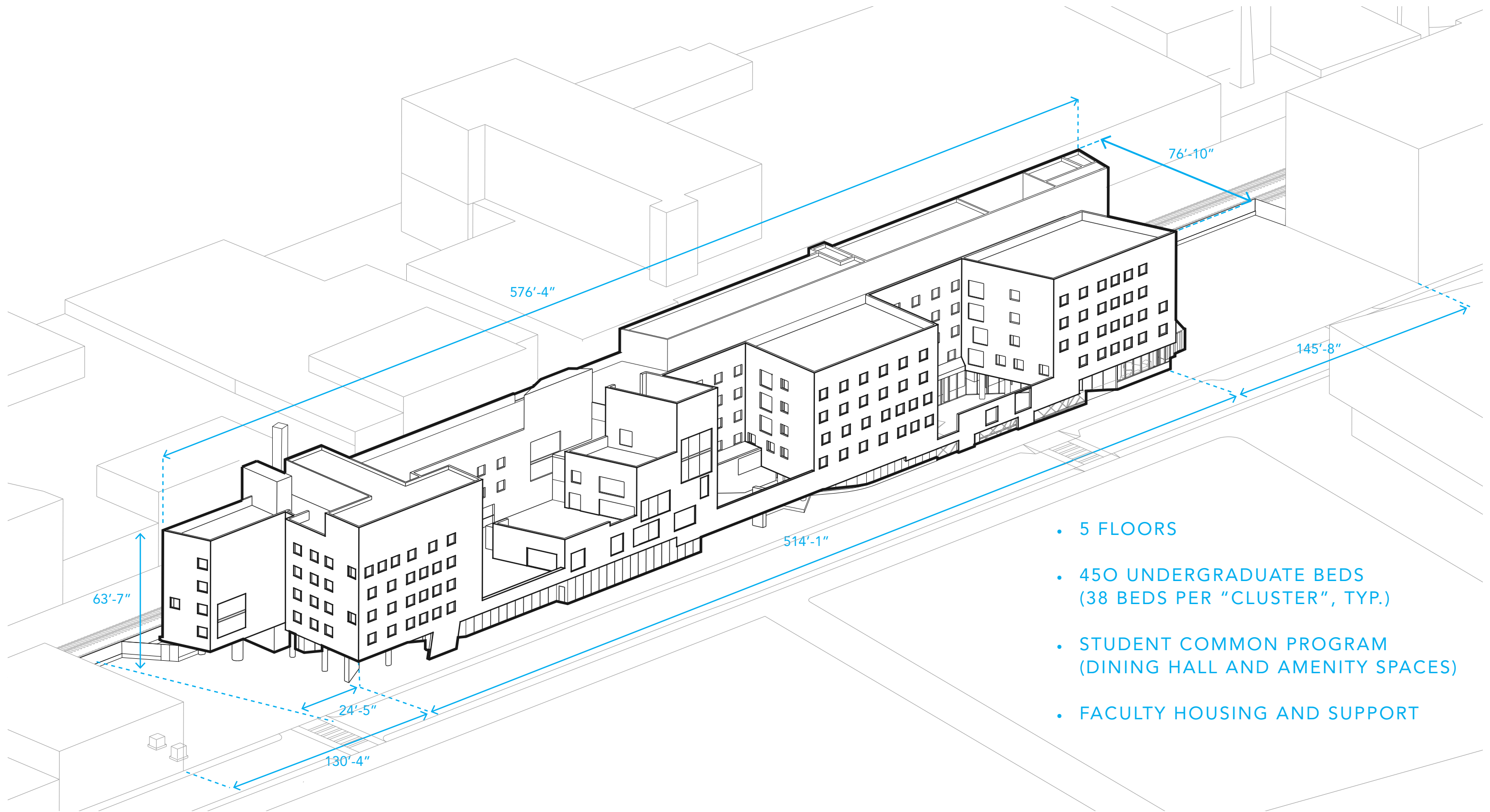
BAKER HOUSE

KRESGE
AUDITORIUM

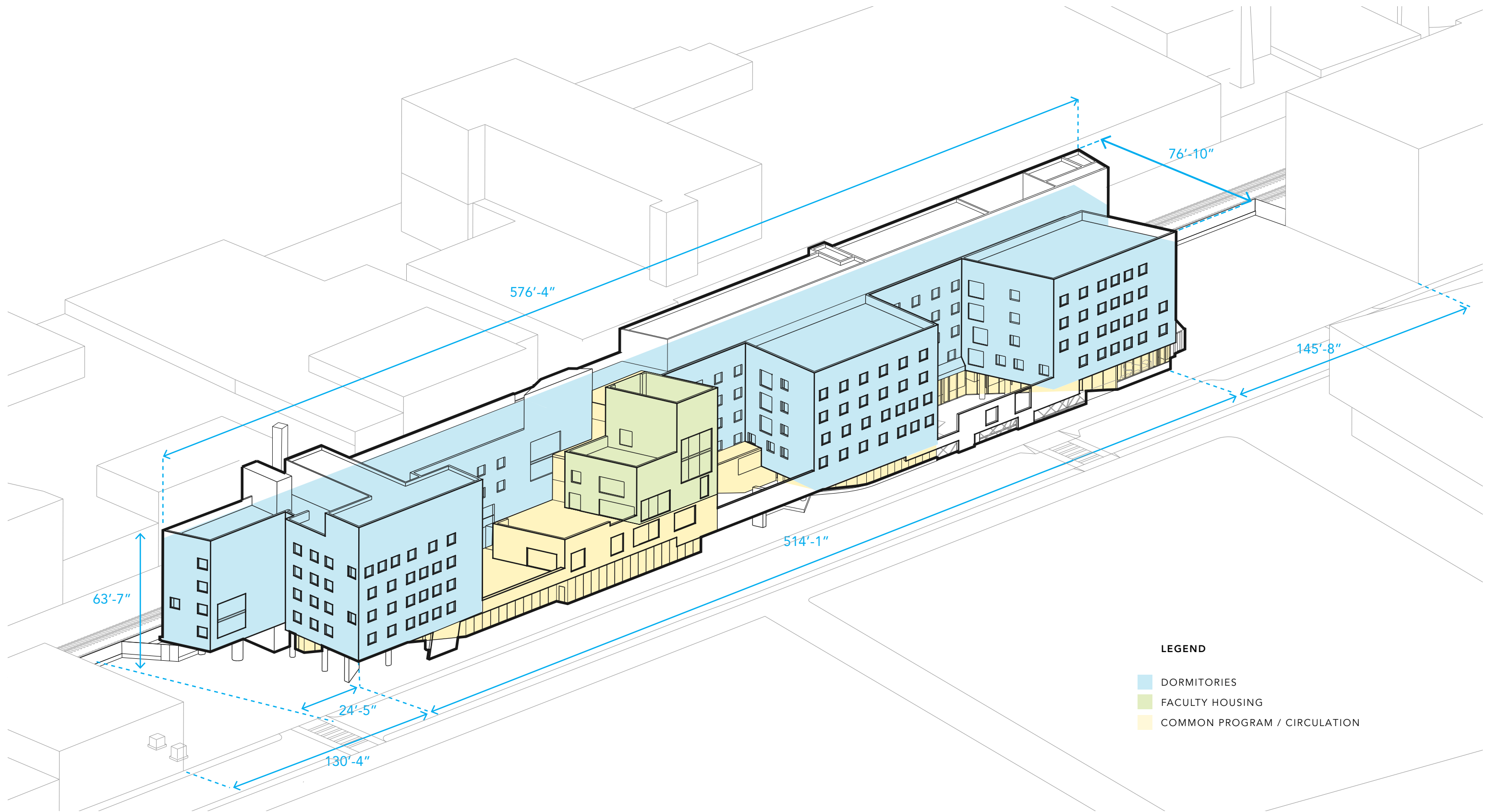
METROPOLITAN
WAREHOUSE

MIT
GREAT DOME

MASSACHUSETTS
AVENUE

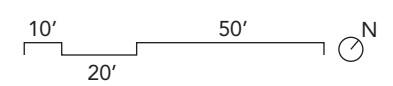
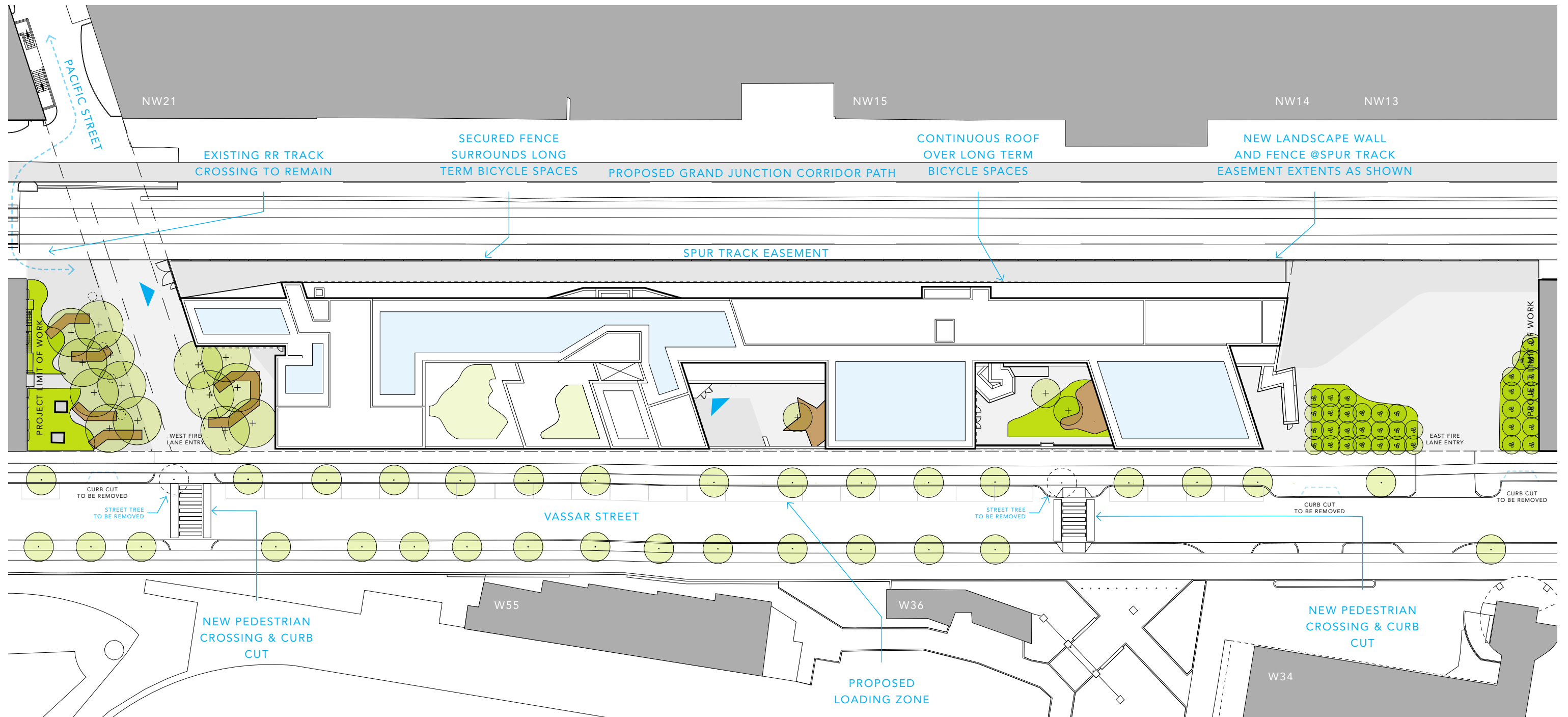


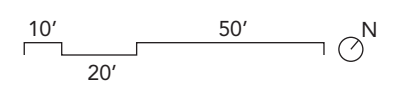
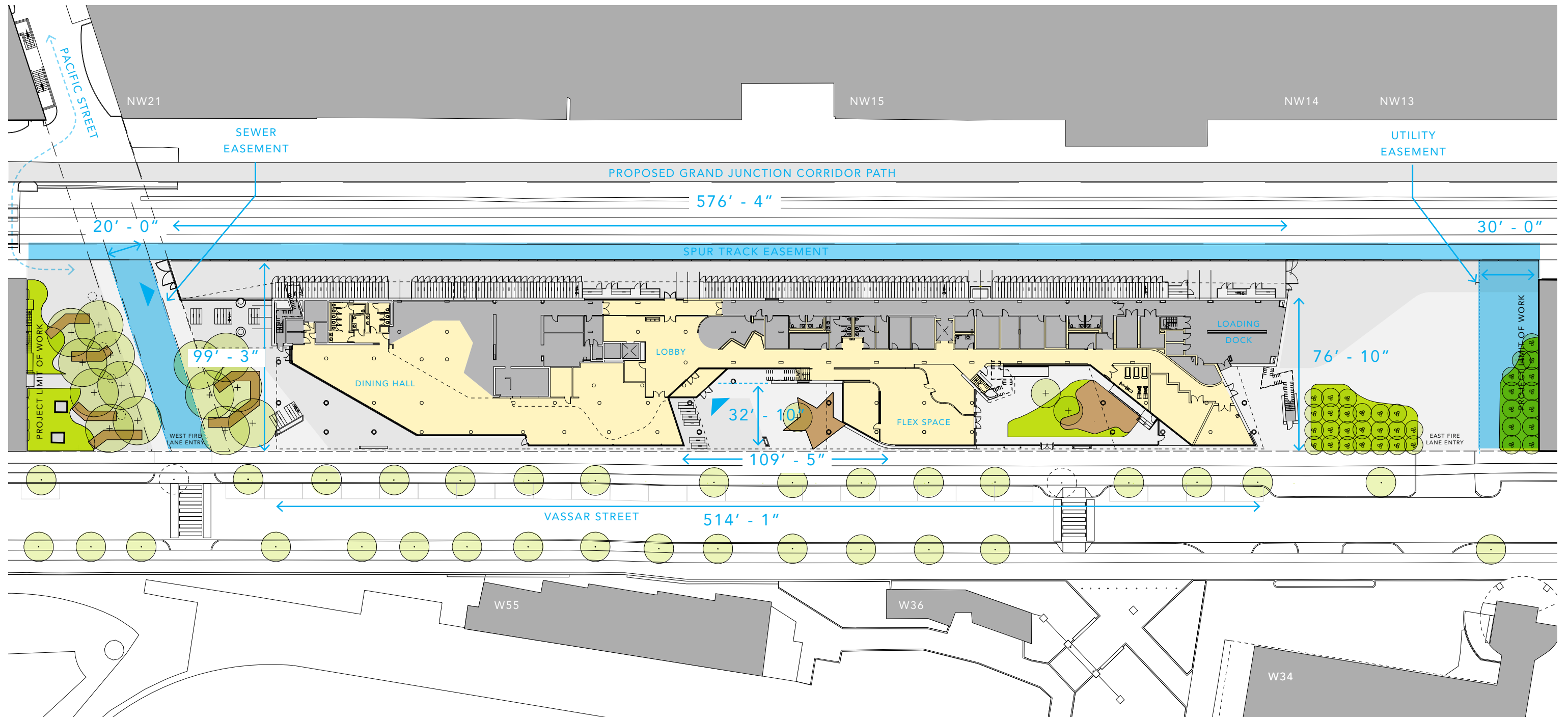
- 5 FLOORS
- 450 UNDERGRADUATE BEDS
(38 BEDS PER "CLUSTER", TYP.)
- STUDENT COMMON PROGRAM
(DINING HALL AND AMENITY SPACES)
- FACULTY HOUSING AND SUPPORT

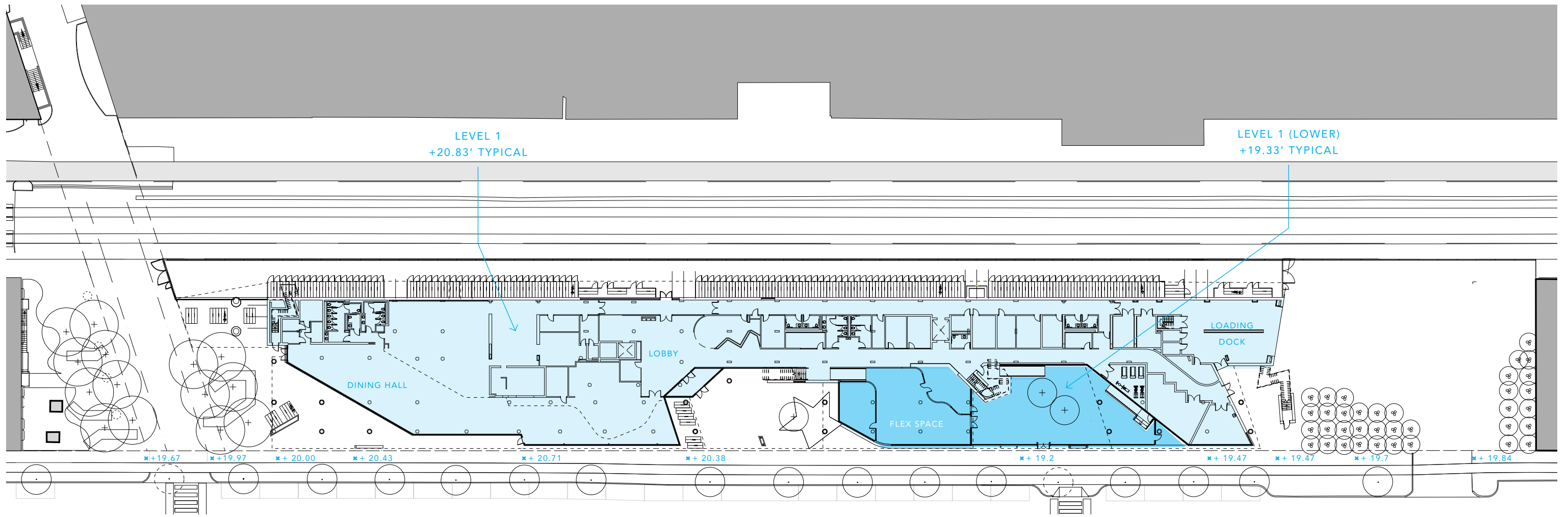


LEGEND

- DORMITORIES
- FACULTY HOUSING
- COMMON PROGRAM / CIRCULATION





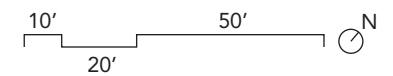


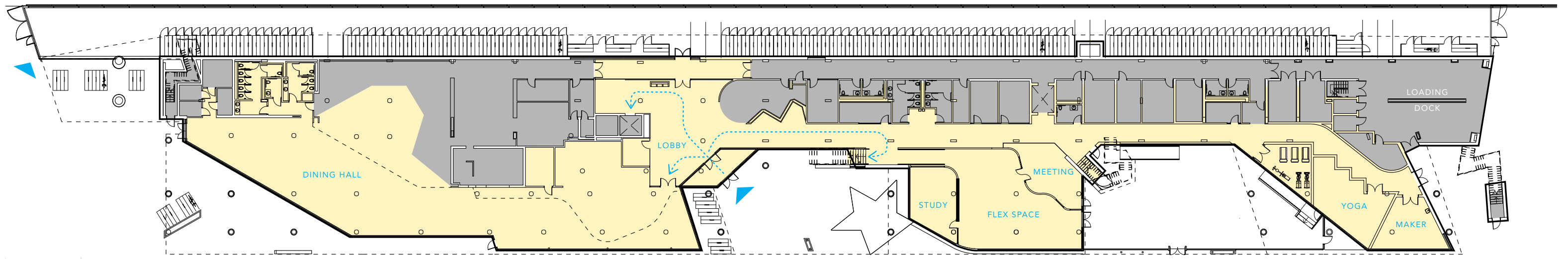
2070 10 YR AND 100 YR EVENT ELEVATIONS
(FROM NOV 2015 CITY OF CAMBRIDGE
CLIMATE VULNERABILITY ASSESSMENT)

	10 yr	100 yr	Proposed Elevations
121 Vassar	19.3	20.3	20.83 and 19.33
169 Vassar	n/a	20.2	20.83 and 19.33

LEGEND

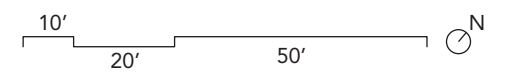
- +19.33' FFE (CAMBRIDGE DATUM)
- +20.83' FFE (CAMBRIDGE DATUM)
- *+ 20.43 SIDEWALK SPOT ELEVATION (CAMBRIDGE DATUM)

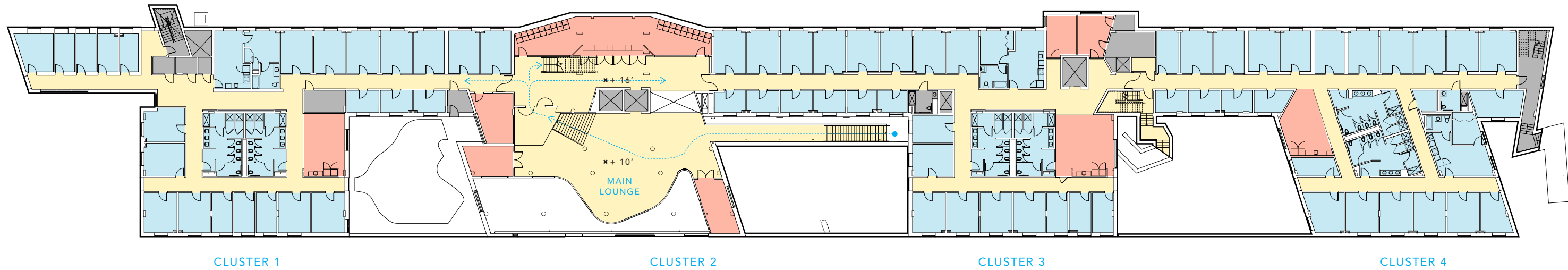




LEGEND

- DORMITORIES
- FACULTY HOUSING
- COMMON PROGRAM / CIRCULATION
- AMENITY SPACES
- BACK OF HOUSE / MEP





CLUSTER 1

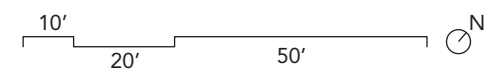
CLUSTER 2

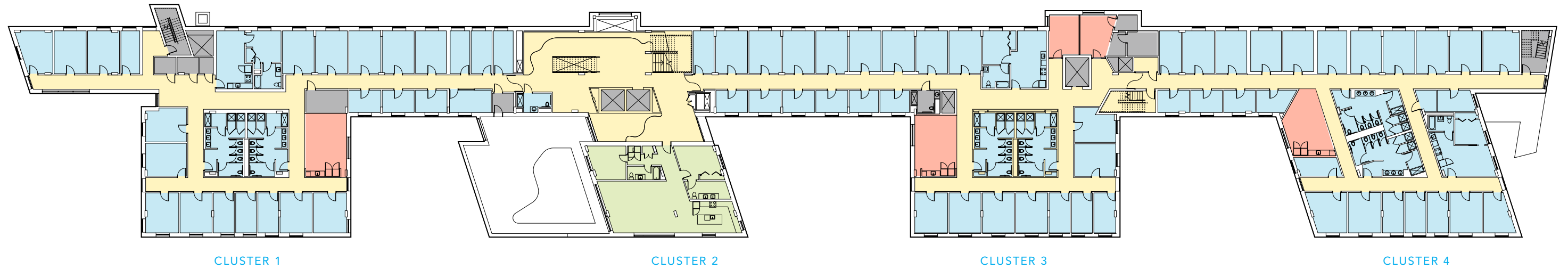
CLUSTER 3

CLUSTER 4

LEGEND

- DORMITORIES
- FACULTY HOUSING
- COMMON PROGRAM / CIRCULATION
- AMENITY SPACES
- BACK OF HOUSE / MEP





CLUSTER 1

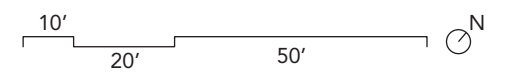
CLUSTER 2

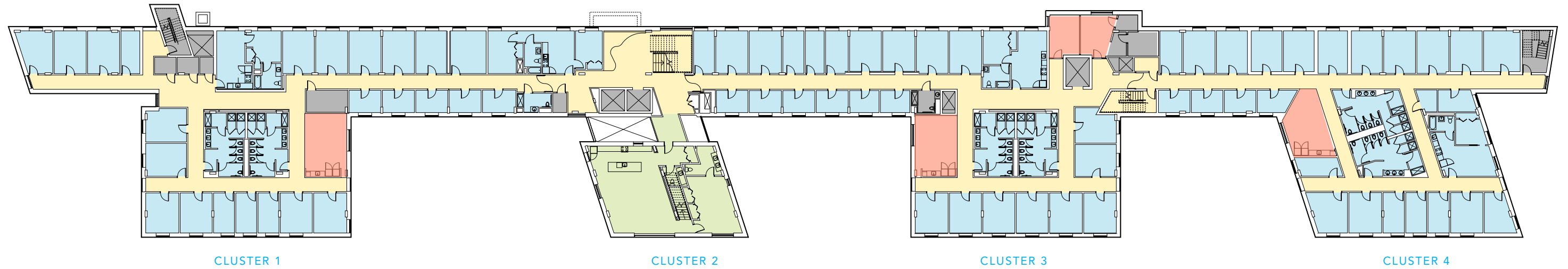
CLUSTER 3

CLUSTER 4

LEGEND

- DORMITORIES
- FACULTY HOUSING
- COMMON PROGRAM / CIRCULATION
- AMENITY SPACES
- BACK OF HOUSE / MEP





CLUSTER 1

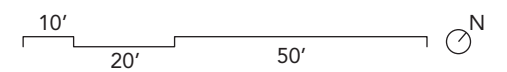
CLUSTER 2

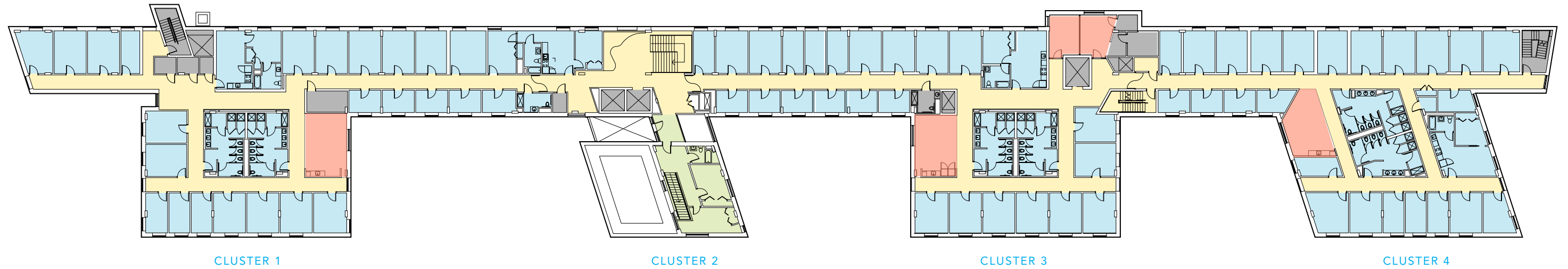
CLUSTER 3

CLUSTER 4

LEGEND

- DORMITORIES
- FACULTY HOUSING
- COMMON PROGRAM / CIRCULATION
- AMENITY SPACES
- BACK OF HOUSE / MEP





CLUSTER 1

CLUSTER 2

CLUSTER 3

CLUSTER 4

LEGEND

- DORMITORIES
- FACULTY HOUSING
- COMMON PROGRAM / CIRCULATION
- AMENITY SPACES
- BACK OF HOUSE / MEP

