

# EXHIBIT B

OWNER:

Revolutionary Growers, LLC  
1 Oak Hill Road  
Fitchburg, MA 01420

No.	Description	Date
2	Activated corner, revised front display cases and entry vestibule	12.17.18
5	Planning Board responses	02.05.19
17	*Door 16 deleted	08.08.18
18	Back Up POS, Basement Plan, Cover page	09.24.18
21	Revised Egress Door	11.06.18

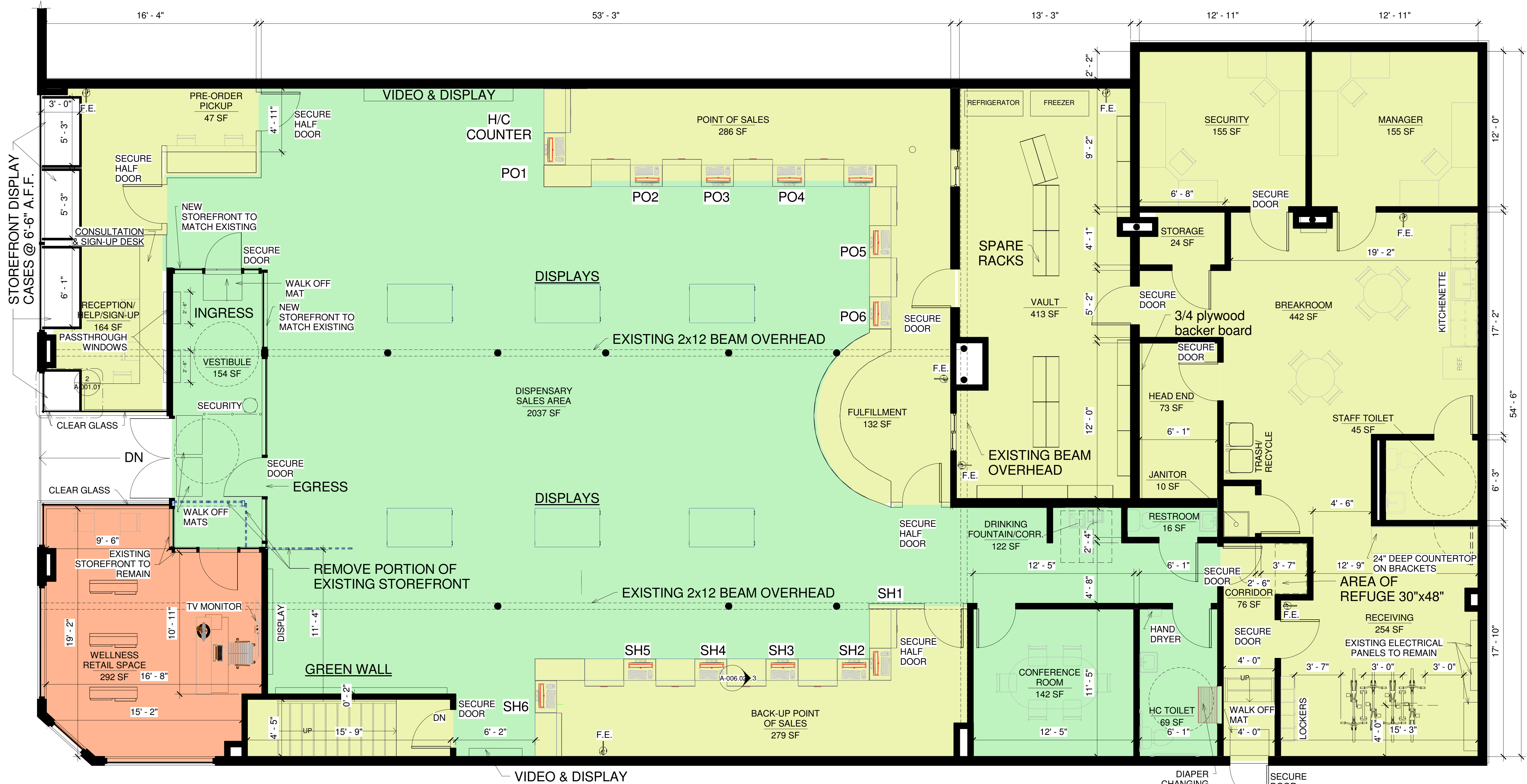


PROJECT  
541 Mass Ave  
Cambridge, MA 02139

Proposed Floor Plan

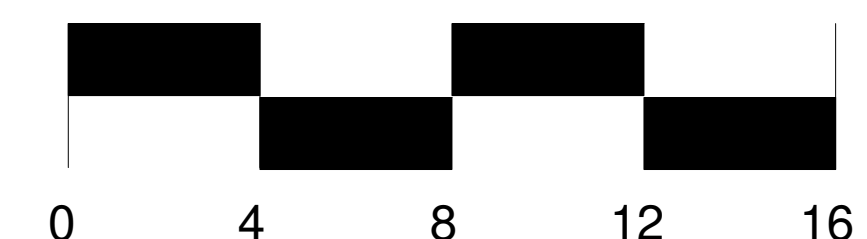
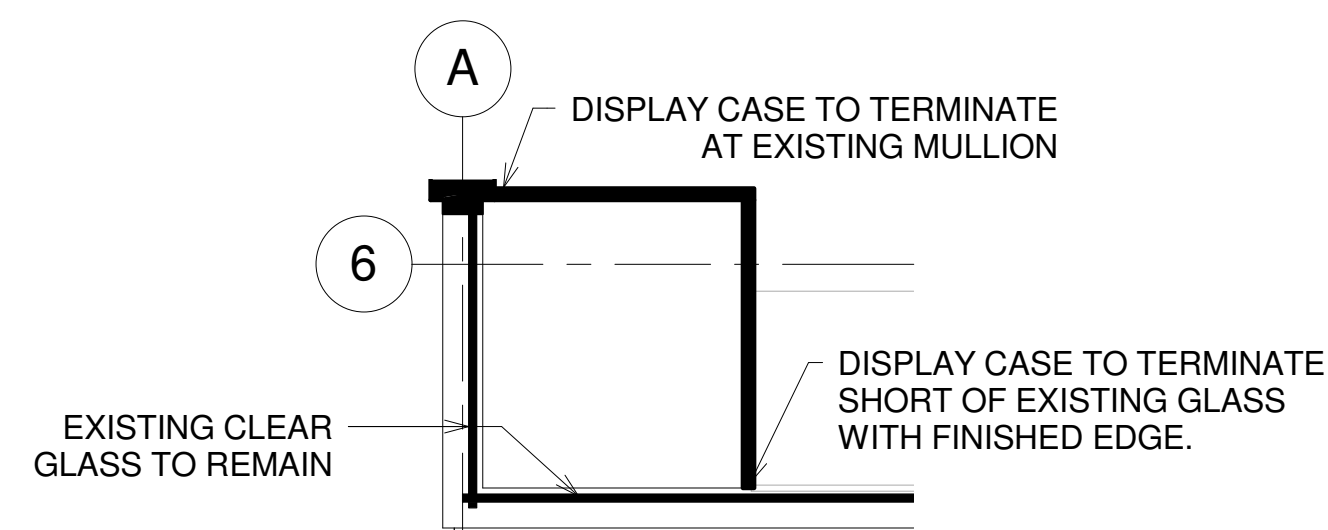
Date	07.25.18
Project number	REV C
Drawn by	L.P. WORTH
Checked by	B. HAMPTON

A-001.01



Floor Plan Legend

- Limited Access
- Public Area
- Restricted Area



**APPROVED PERMIT**

1 PROPOSED FLOOR PLAN  
1/4" = 1'-0"

2 CORNER STOREFRONT DISPLAY CASE  
1/2" = 1'-0"

OWNER:

Revolutionary Growers, LLC  
1 Oak Hill Road  
Fitchburg, MA 01420

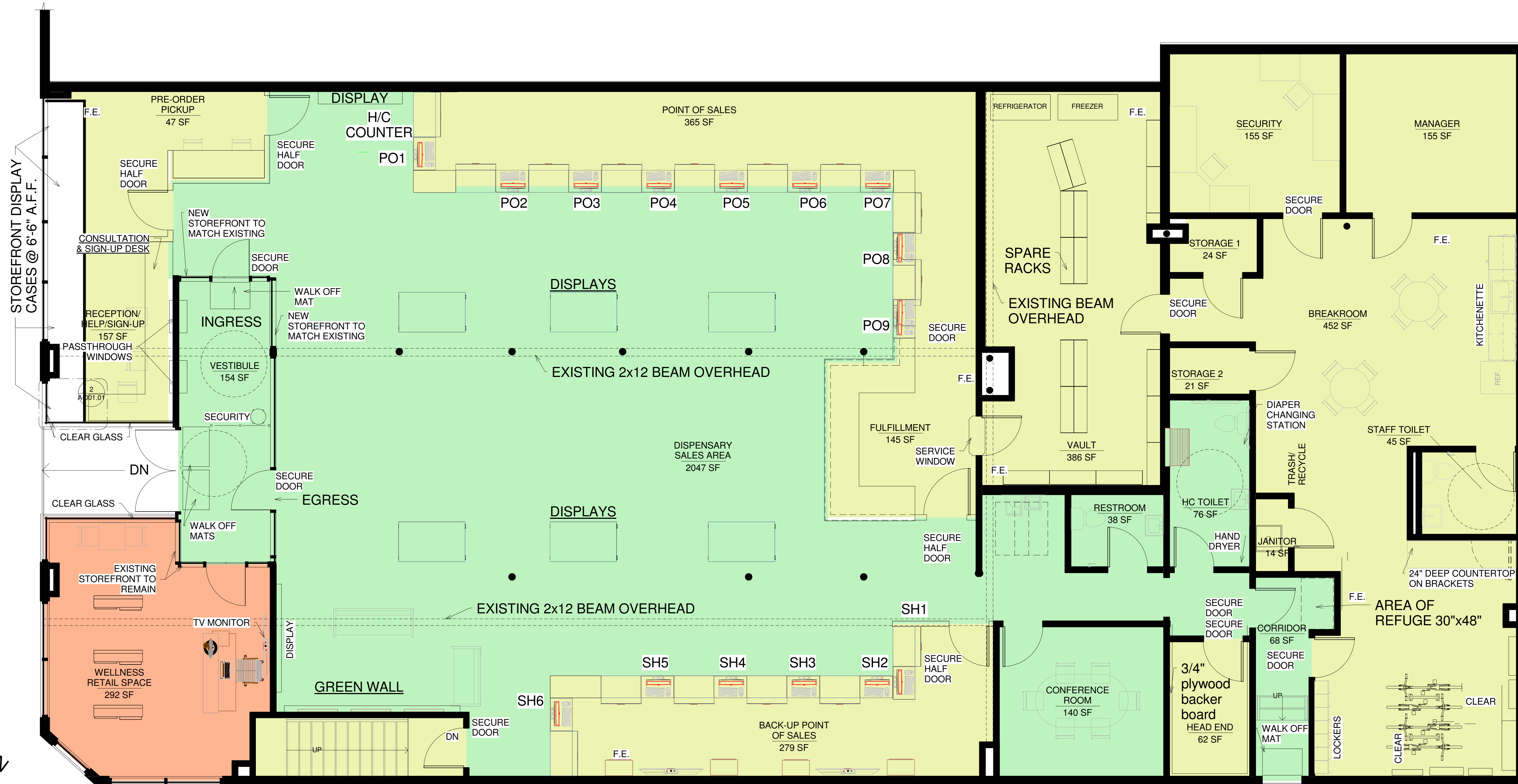
No.	Description	Date
2	Activated corner, revised front display cases and entry vestibule	12.17.18
5	Planning Board responses	02.05.19
7	Bathroom Reconfiguration	03.09.19
8	Sales Counter Reconfiguration	03.25.19
9	Fulfillment Soffit, 2 additional POS stations, Exterior Signage	03.28.19



PROJECT  
541 Mass Ave  
Cambridge, MA 02139  
Proposed Floor Plan

Date	03.15.18
Project number	REV C
Drawn by	L.P. WORTH
Checked by	B. HAMPTON

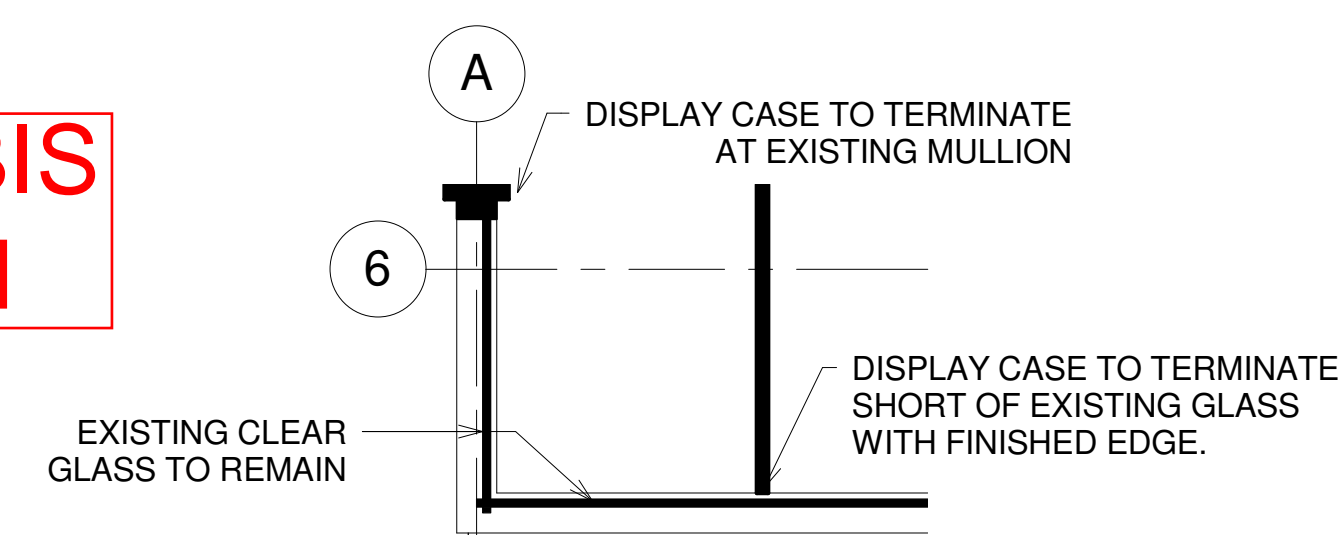
A-001.01



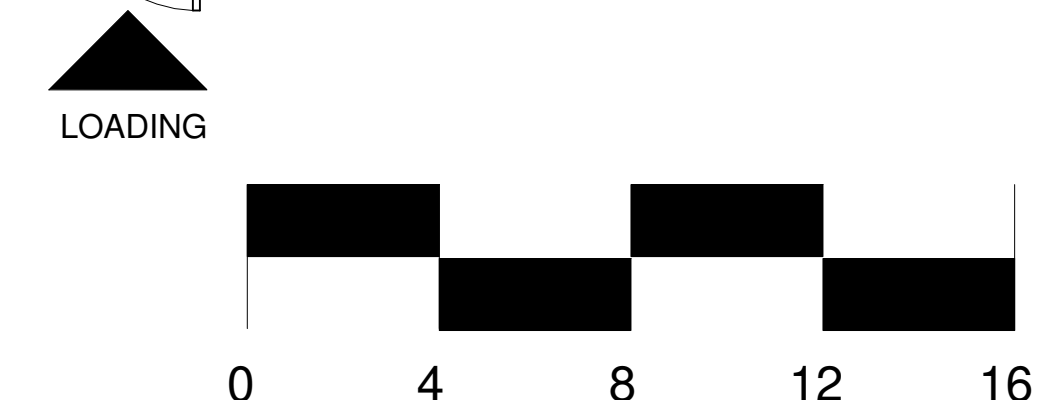
Floor Plan Legend

- Limited Access
- Public Area
- Restricted Area

**REVISED FOR CANNABIS RETAIL APPLICATION**

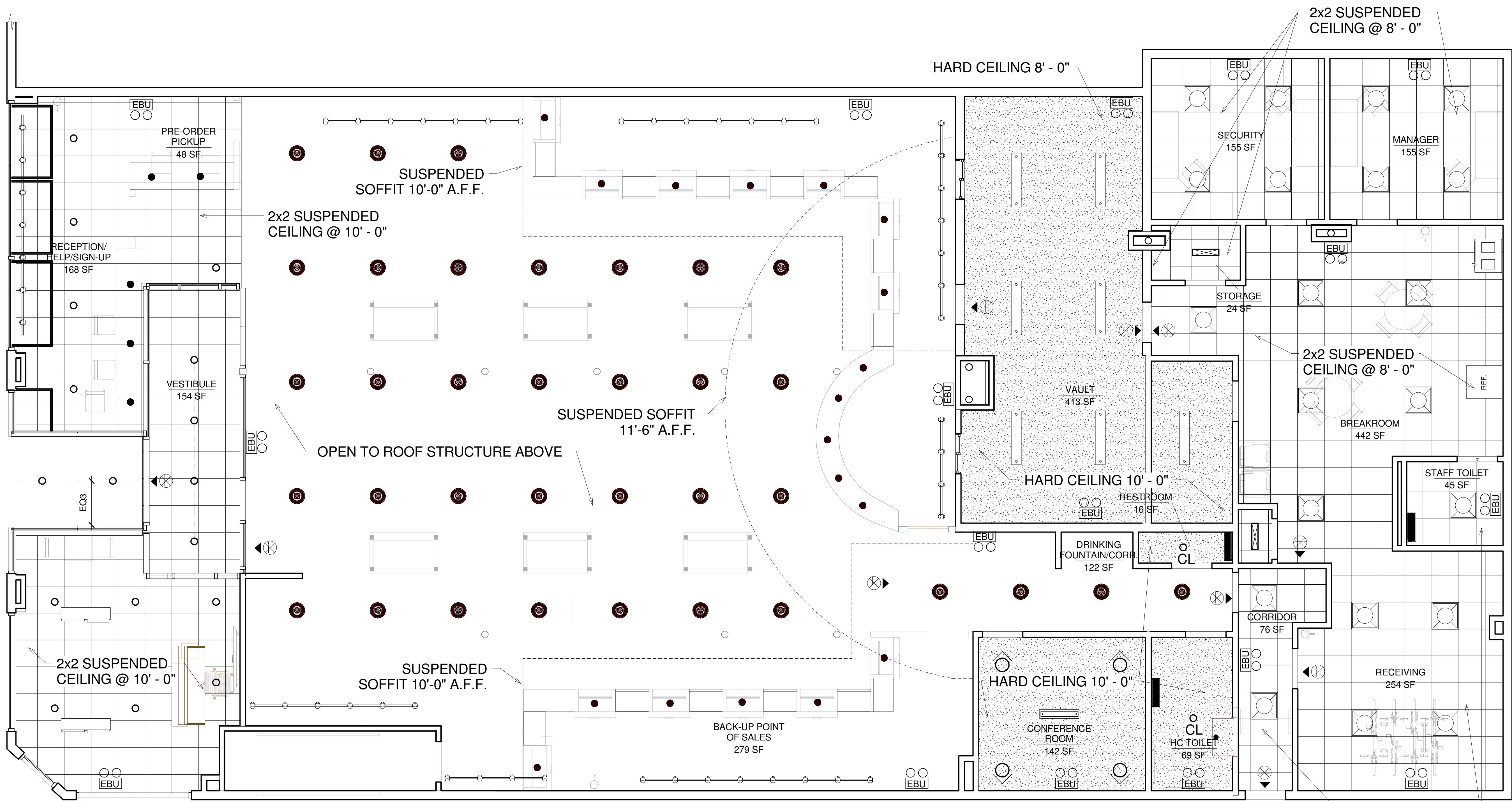


- Revisions from Permit Set
- Rectangular Fulfillment Counter & soffit revised from half circle shape
  - Rear Corridor revised to limited access from restricted area
  - Bike racks rotated 90 degrees
  - One large storefront window display case instead of four
  - Two additional point of stations added
  - HC Toilet and Head End switched locations
  - Second Patient Restroom made wider



1 PROPOSED FLOOR PLAN  
1/4" = 1'-0"

2 CORNER STOREFRONT DISPLAY CASE  
1/2" = 1'-0"



- ### Light Fixture Legend
- General barn light pendant fixture
  - 2'x2' Parabolic troffer light
  - Wall sconce uplight
  - 6" Recessed can light
  - Directional Exit Signs
  - Track lights
  - Recessed wall washer fixture
  - 4' Work light
  - 2' Work light
  - EBU
  - Accent pendant light fixture
  - Linear pendant light fixture
  - Rectangular pendant lamp

- ### Ceiling Finish Legend
- 2x2 Suspended Ceiling Tiles Style I
  - 2x2 Suspended Ceiling Tiles Style II
  - GWB Hard Ceiling

No.	Description	Date
18	Back Up POS, Basement Plan, Cover page	09.24.18



PROJECT  
**541 Mass Ave**  
 Cambridge, MA 02139  
 Reflected Ceiling Plan

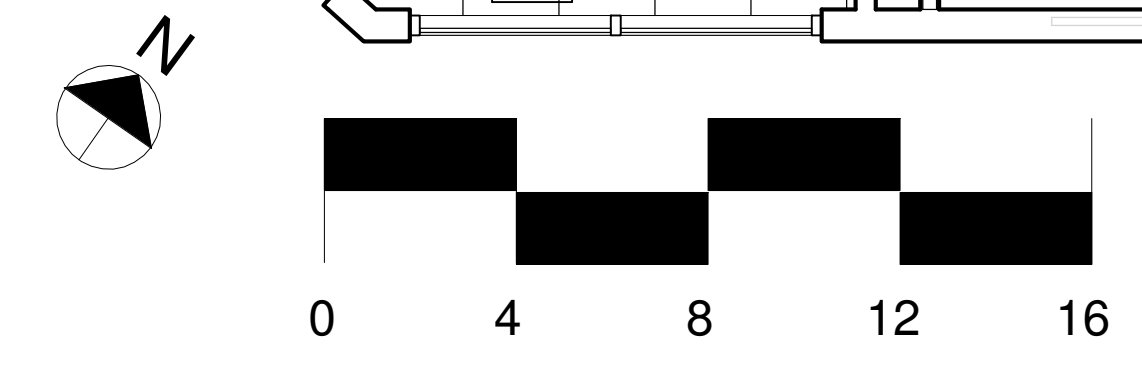
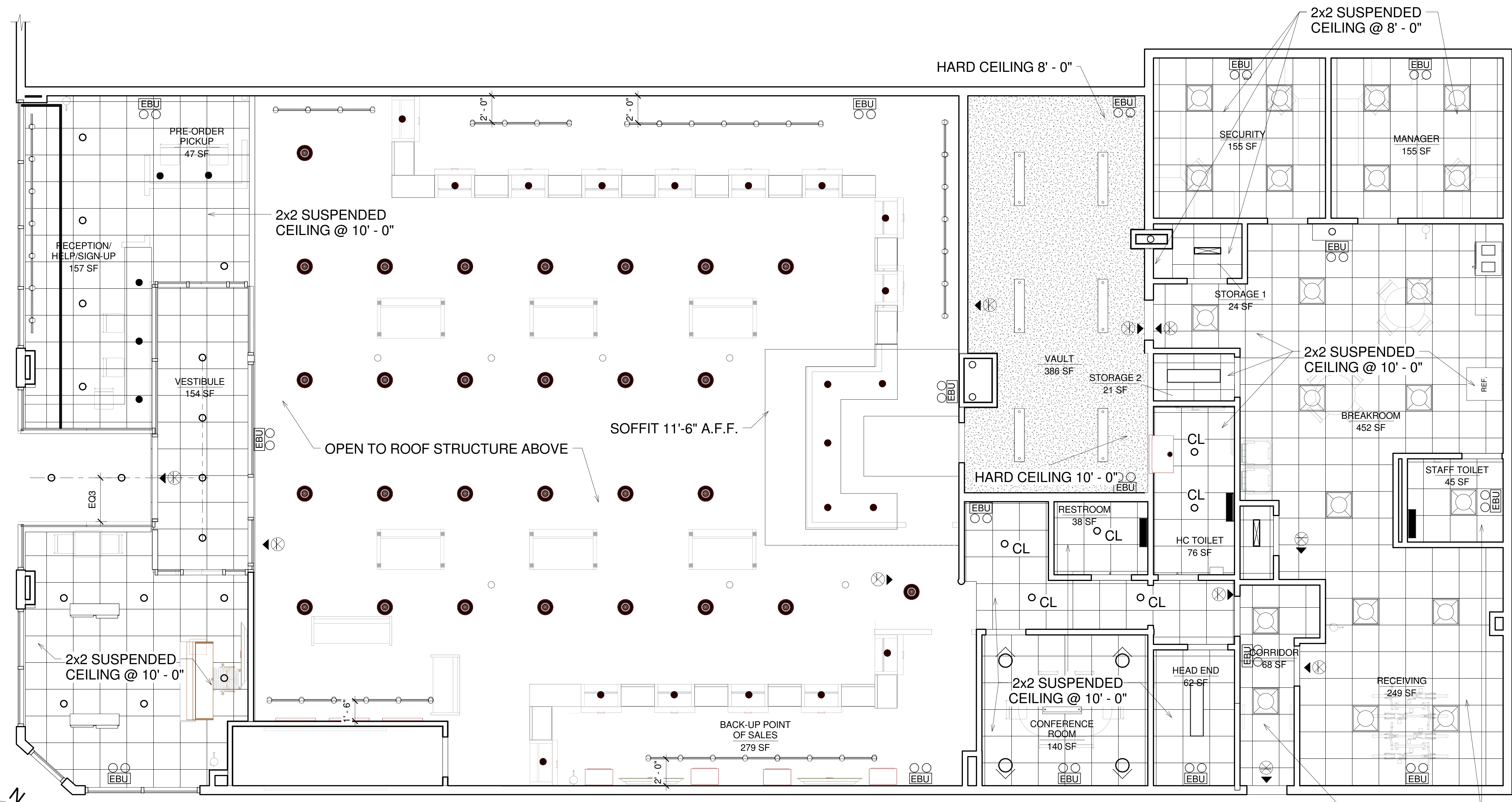
Date 07.25.18  
 Project number REV C  
 Drawn by L.P. WORTH  
 Checked by B. HAMPTON

A-001.02

**APPROVED PERMIT**

**1 PROPOSED REFLECTED CEILING PLAN**  
 1/4" = 1'-0"

No.	Description	Date
7	Bathroom Reconfiguration	03.09.19
8	Sales Counter Reconfiguration	03.25.19
9	Fulfillment Soffit, 2 additional POS stations, Exterior Signage	03.28.19
18	Back Up POS, Basement Plan, Cover page	09.24.18



**REVISED FOR CANNABIS  
 RETAIL APPLICATION**

**Light Fixture Legend**

	General barn light pendant fixture		Recessed wall washer fixture
	2'x2' Parabolic troffer light		4' Work light
	Wall sconce uplight		2' Work light
	6" Recessed can light		EBU
	Directional Exit Signs		Accent pendant light fixture
	Track lights		Linear pendant light fixture
			Rectangular pendant lamp

**Ceiling Finish Legend**

	2x2 Suspended Ceiling Tiles Style I
	2x2 Suspended Ceiling Tiles Style II
	GWB Hard Ceiling

**Revisions from Permit Set**  
 - Rectangular Fulfillment Counter & soffit revised from half circle shape  
 - One large storefront window display case instead of four  
 - Two additional point of stations added  
 - HC Toilet and Head End switched locations

1 PROPOSED REFLECTED CEILING PLAN  
 1/4" = 1'-0"



PROJECT  
 541 Mass Ave  
 Cambridge, MA 02139

Reflected Ceiling Plan

Date	03.15.18
Project number	REV C
Drawn by	L.P. WORTH
Checked by	B. HAMPTON

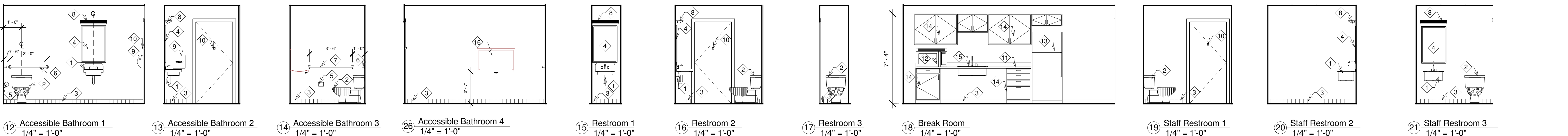
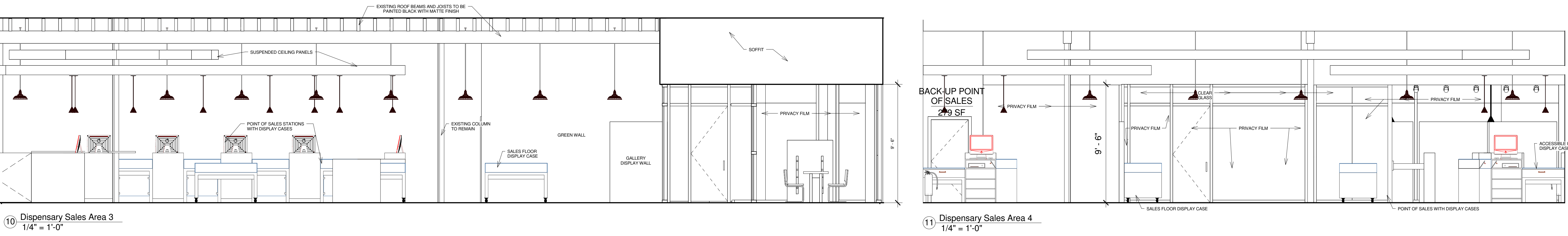
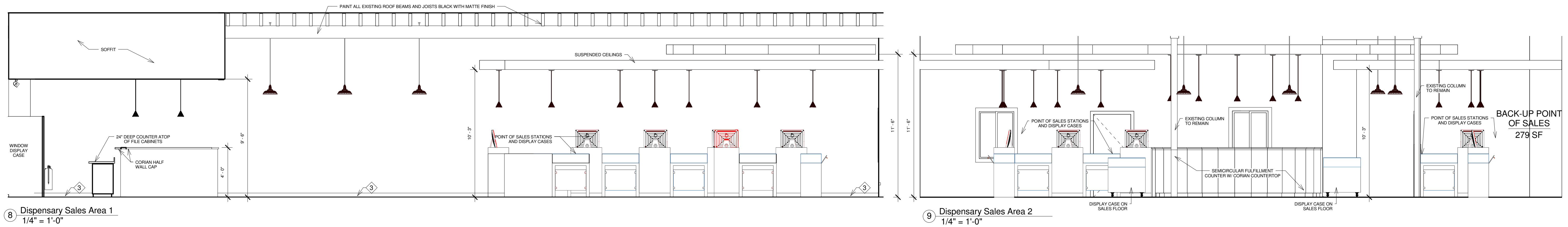
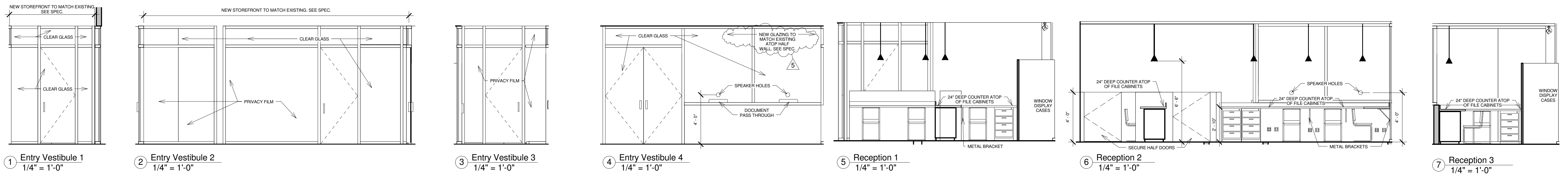
**A-001.02**  
 18

1 of

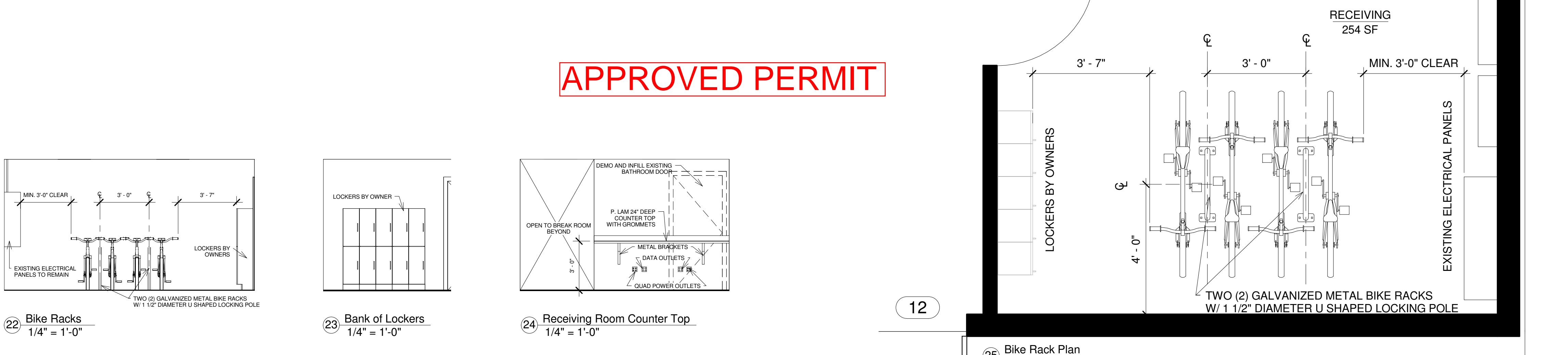
OWNER:

Revolutionary Growers, LLC  
1 Oak Hill Road  
Fitchburg, MA 01420

No.	Description	Date
4	Changing table, gravel size	01.29.19
5	Planning Board responses	02.05.19



- ACCESSIBLE BATHROOM INTERIOR ELEVATIONS NOTES
- 1 Wall hung MAAB approved, lavatory sink with lever faucet @ 34\"/>



**APPROVED PERMIT**

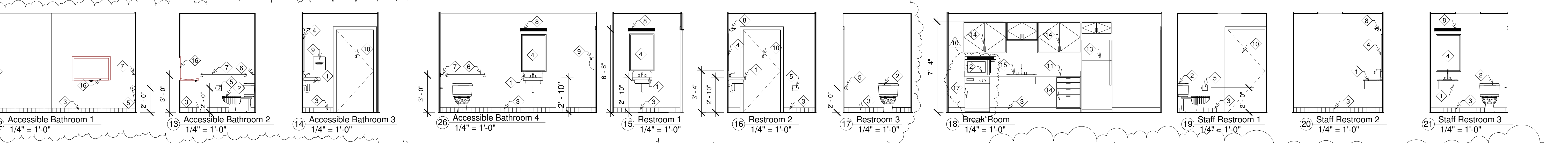
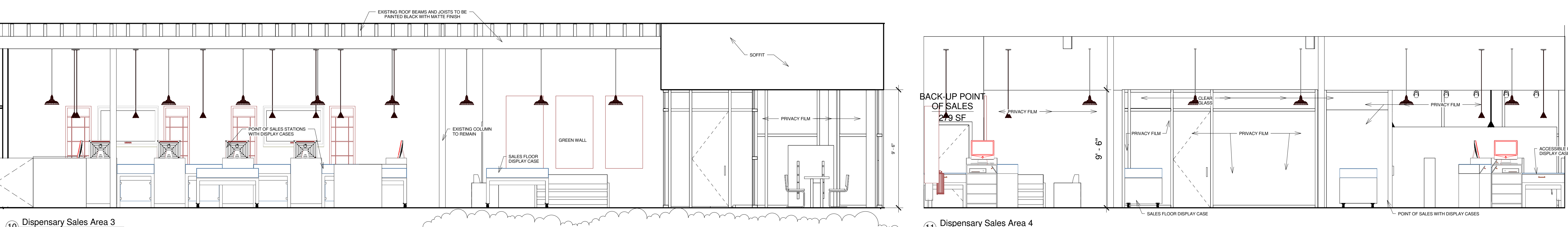
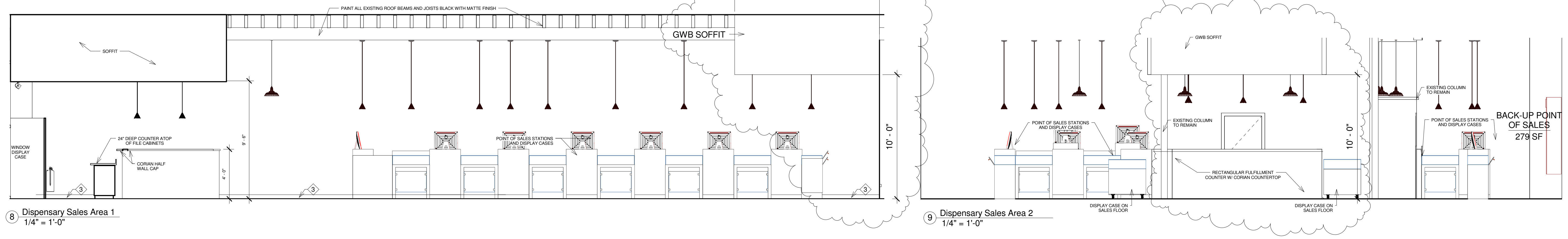
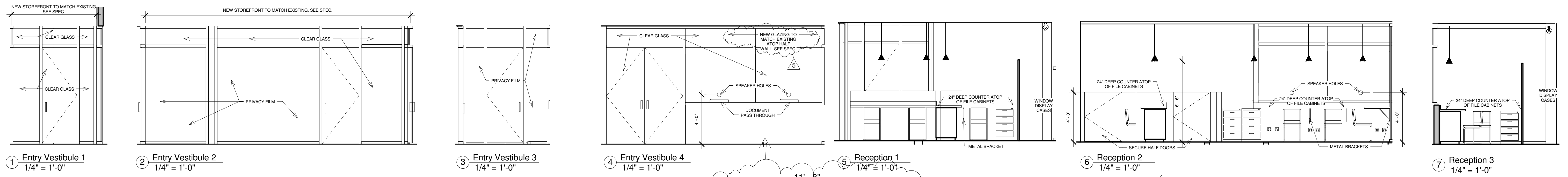


PROJECT  
**541 Mass Ave**  
Cambridge, MA 02139  
Interior Elevations & Bike Rack Plan

Date	07.25.18
Project number	REV C
Drawn by	L.P. WORTH
Checked by	B. HAMPTON

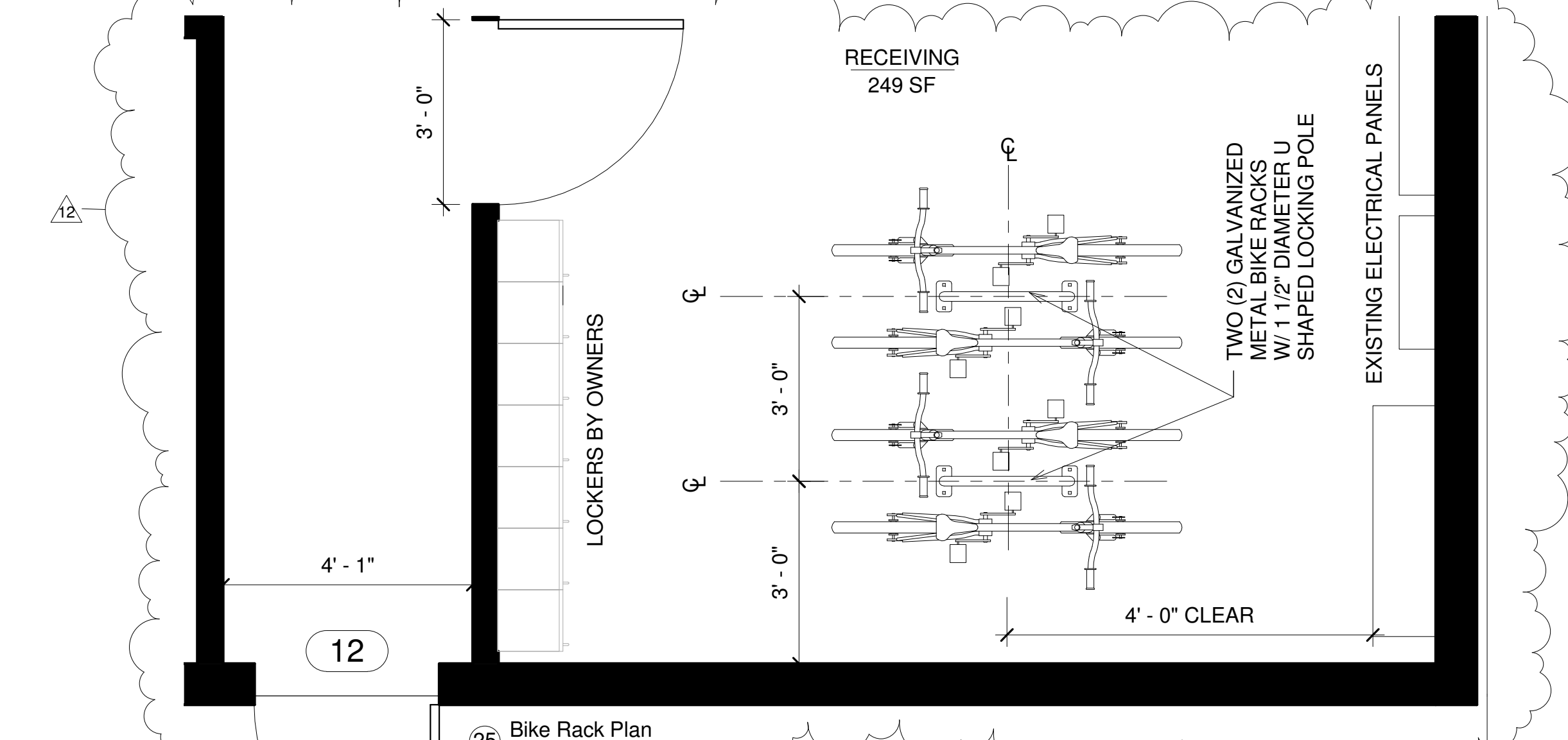
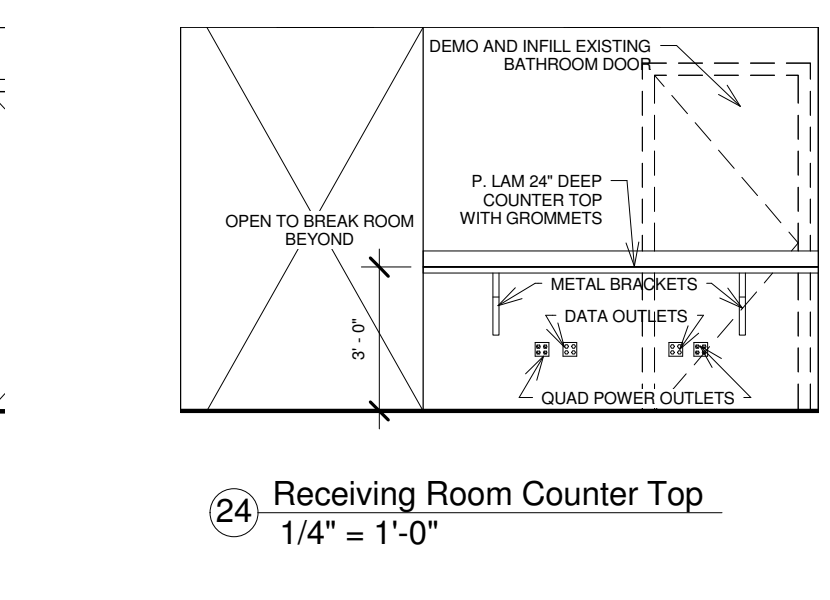
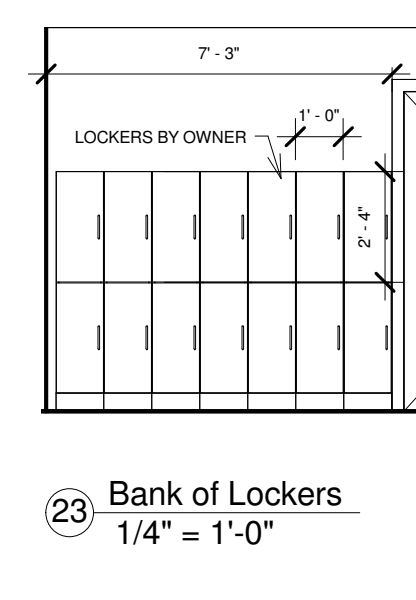
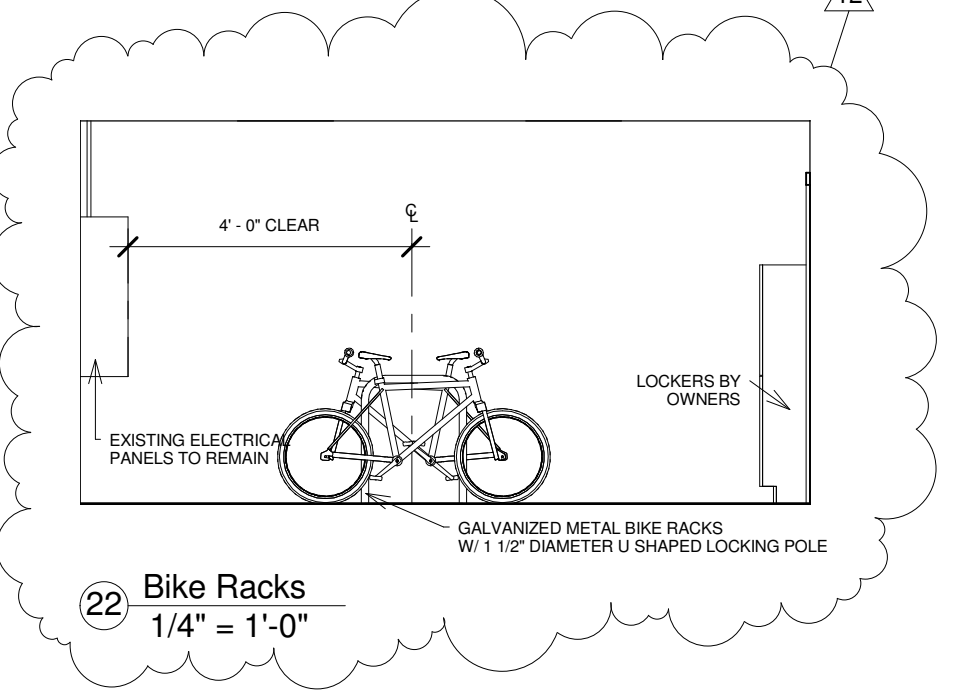
**A-003.01**

No.	Description	Date
4	Changing table, gravel size	01.29.19
5	Planning Board responses	02.05.19
7	Bathroom Reconfiguration	03.09.19
10	Area of Refuge, Dishwasher	04.16.19
11	Soffit over Fulfillment	05.13.19
12	Bike Rack Reconfiguration	01.23.18

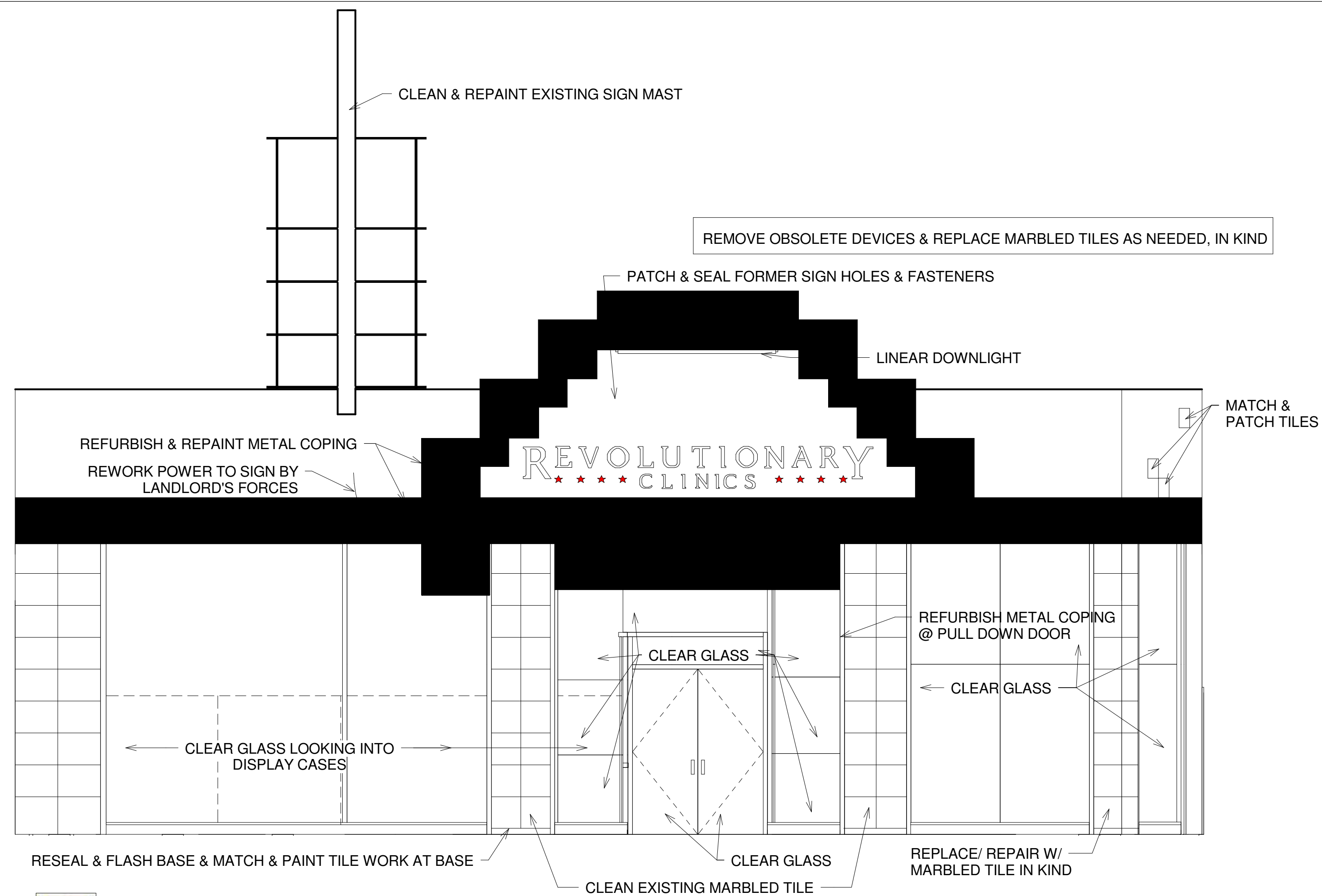


- ACCESSIBLE BATHROOM INTERIOR ELEVATIONS NOTES**
- 1 Wall hung MAAB approved, lavatory sink with lever faucet @ 34" A.F.F. Kohler Greenwich K-2031 or approved equal.
  - 2 1.28 gallon "water saving", comfort height water closet. See specification.
  - 3 4" Wall Base. See Finish Schedule.
  - 4 24x36 ADA wall mount mirror. Bottom of mirror mounted 40" A.F.F.
  - 5 Surface mounted chrome toilet paper dispenser mounted 2' - 0" A.F.F.
  - 6 36" chrome grab bar mounted 3'-0" A.F.F.
  - 7 42" chrome grab bar mounted 3'-0" A.F.F.
  - 8 Sconce light fixture mounted 6'-8" A.F.F.
  - 9 Wall mount ADA Xlerator hand dryer. See specifications.
  - 10 Chrome robe hook mounted 4'-6" A.F.F.
  - 11 24" deep countertop. See spec.
  - 12 Microwave. See spec.
  - 13 Refrigerator. See spec.
  - 14 Wall and base cabinets. See spec.
  - 15 30" single bay sink. See spec.
  - 16 Recessed horizontal baby changing station mounted 31" A.F.F. See spec.
  - 17 Dishwasher. See spec.

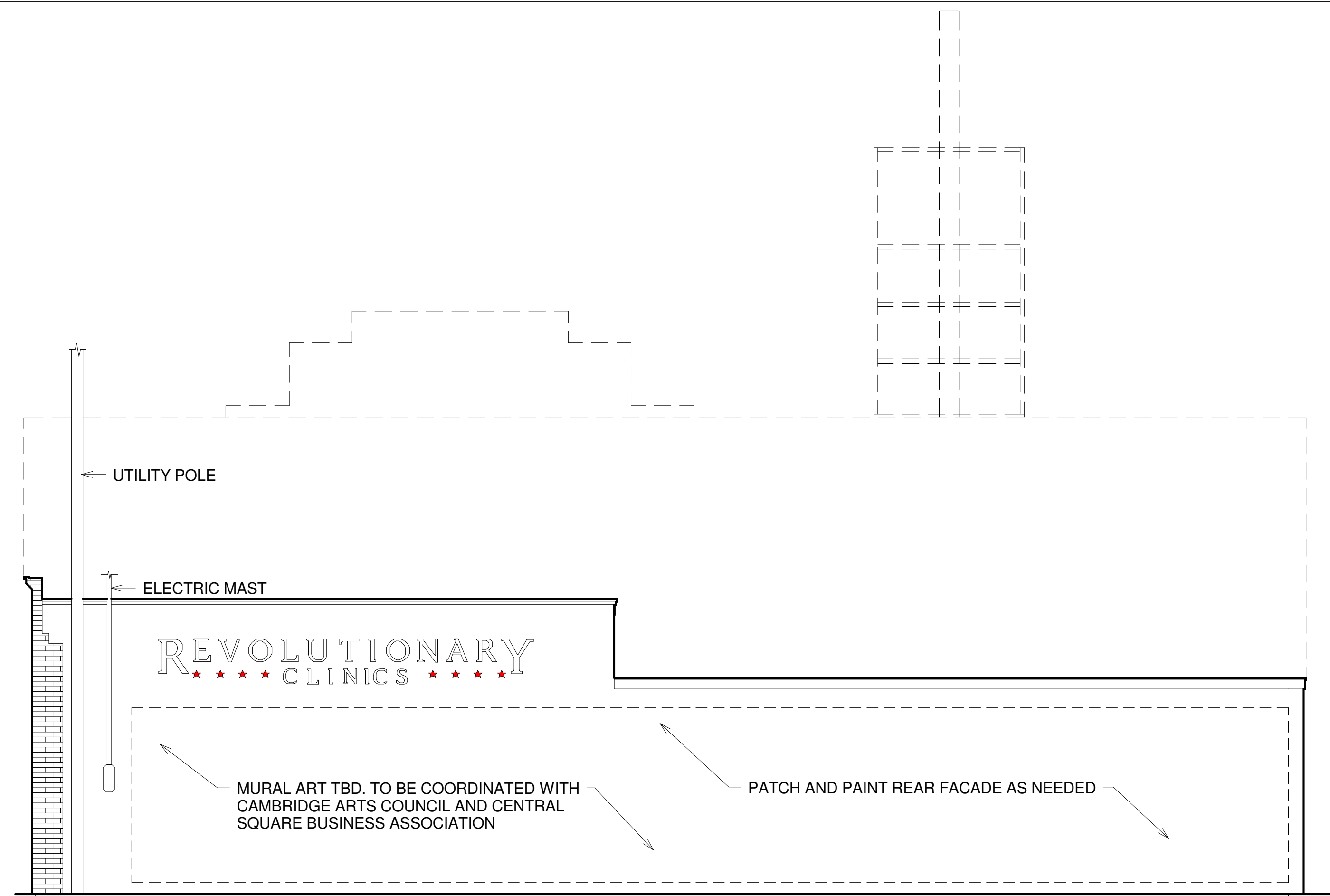
**REVISED FOR CANNABIS RETAIL APPLICATION**



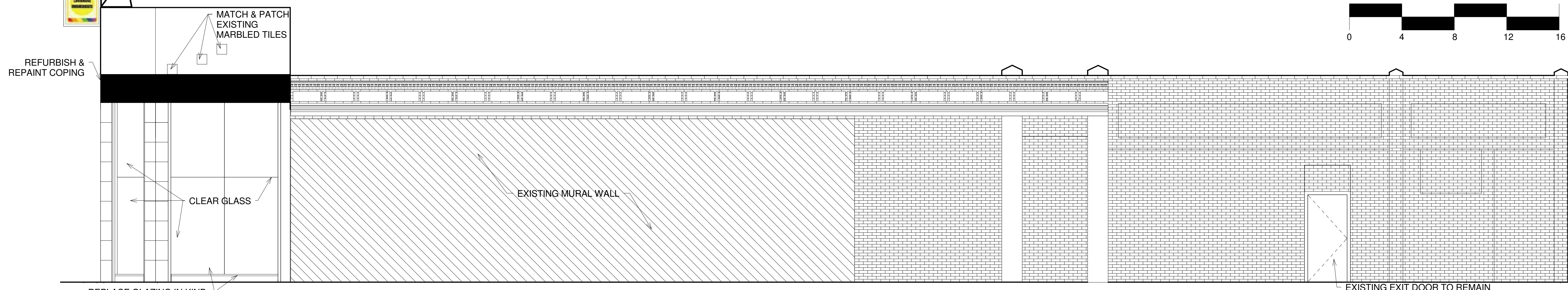
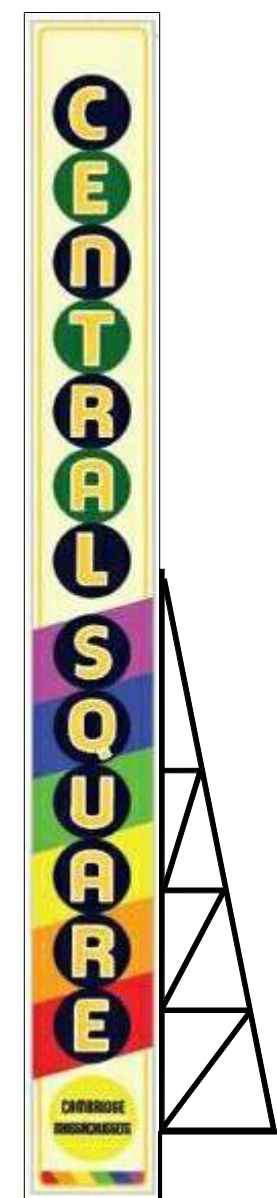
No.	Description	Date



**1** PROPOSED FRONT ELEVATION  
 1/4" = 1' - 0"

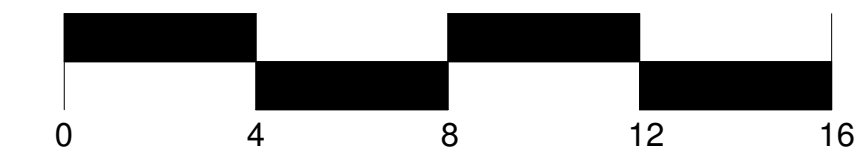


**2** PROPOSED REAR ELEVATION  
 1/4" = 1' - 0"



**3** PROPOSED SIDE ELEVATION  
 1/4" = 1' - 0"

**APPROVED PERMIT**



PROJECT  
**541 Mass Ave**  
 Cambridge, MA 02139

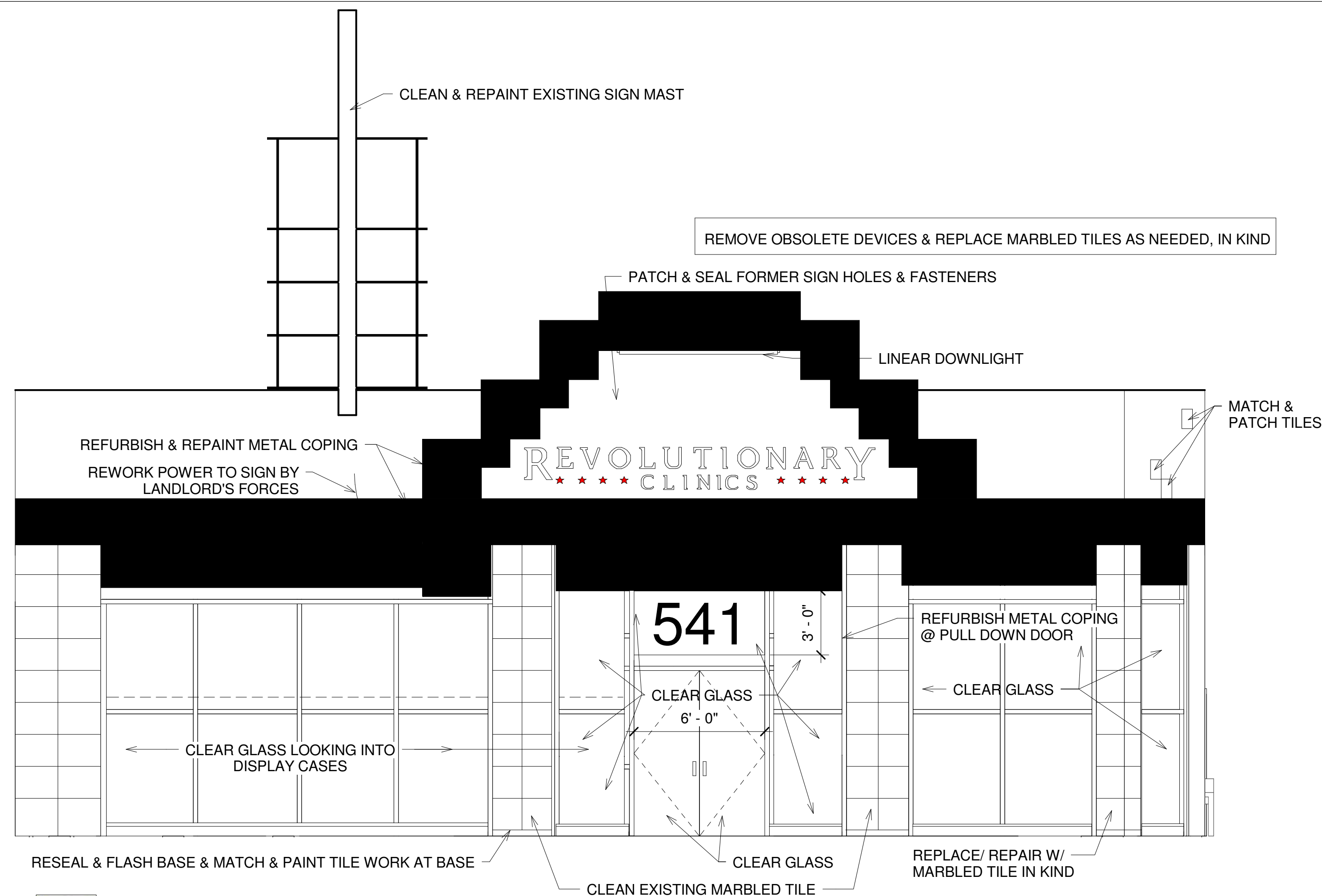
Building Elevations

Date	07.25.18
Project number	REV C
Drawn by	L.P. WORTH
Checked by	B. HAMPTON

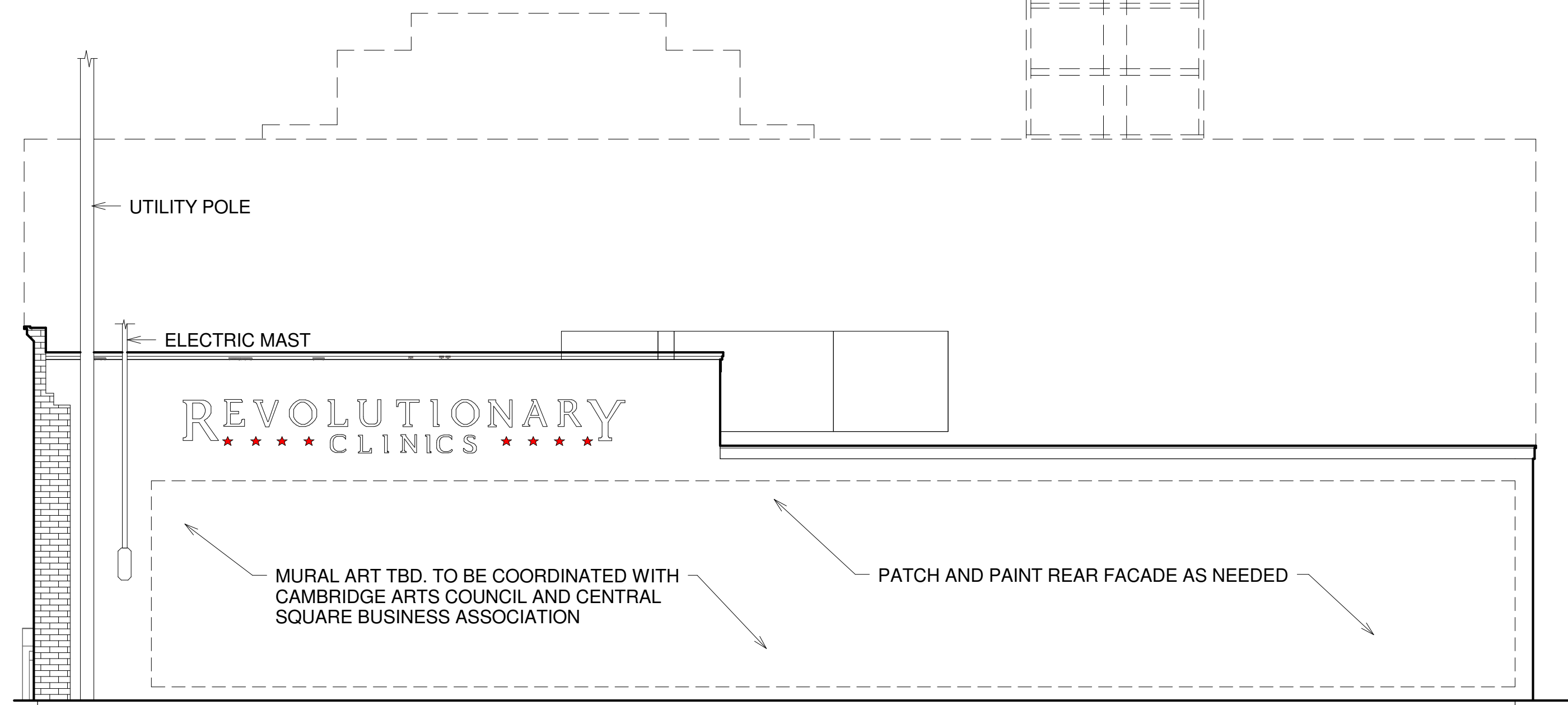
**A-002.00**



No.	Description	Date

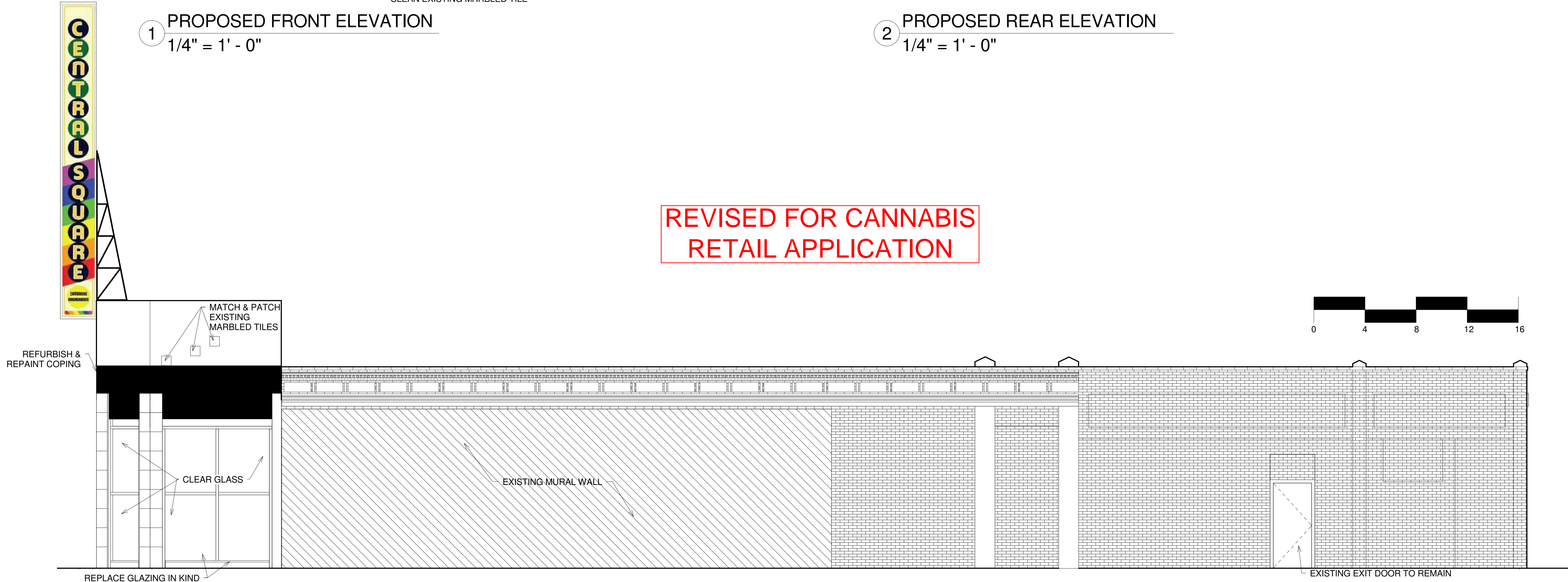


1 PROPOSED FRONT ELEVATION  
1/4" = 1' - 0"

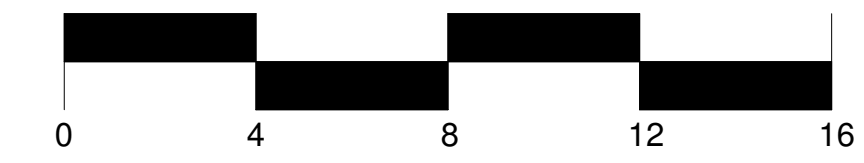


2 PROPOSED REAR ELEVATION  
1/4" = 1' - 0"

REVISED FOR CANNABIS  
RETAIL APPLICATION



3 PROPOSED SIDE ELEVATION  
1/4" = 1' - 0"



PROJECT  
541 Mass Ave  
Cambridge, MA 02139

Building Elevations

Date	03.15.18
Project number	REV C
Drawn by	L.P. WORTH
Checked by	B. HAMPTON

A-002.00