

**OWNER:**  
Revolutionary Clinics, LLC

**ARCHITECT:**  
Elton + Hampton Architects  
103 Terrace Street  
Roxbury, MA 02120  
(617) 708-1071

**PLUMBING, HVAC & ELECTRICAL ENGINEER:**  
CSI Engineering  
125 Aviation Avenue  
Suite 4  
Portsmouth, NH 03801  
(603) 319-8244

**SECURITY:**  
Lan-Tel Communications, Inc.  
1400 Providence Highway  
Suite 3100  
Norwood, MA 02062  
(857) 939-8181

**DRAWING LIST**

Cover Page

- A-000.00 Site Plan
- A-001.00 Basement Plan
- A-001.01 Proposed Floor Plan
- A-001.02 Reflected Ceiling Plan
- A-001.03 Roof Plan
- A-002.00 Building Elevations
- A-002.01 Building Sections
- A-003.00 Schedules, Wall Types & Interior Signage
- A-003.01 Interior Elevations
- A-004.00 Life Safety Plan
- A-005.00 Existing Conditions Map
- A-005.01 Site Context Plans
- A-005.02 Existing Conditions Photographs
- A-005.03 Existing Conditions Photographs
- A-005.04 Proposed Interior Rendering
- A-005.05 Proposed Exterior Rendering
- A-005.06 Illustrative Sections

- P1.0 Plumbing Legend
- P2.0 Plumbing Basement Plan
- P2.1 Plumbing Floor Plan
- P2.2 Plumbing Basement Plan
- P3.0 Plumbing Details
- P4.0 Plumbing Specifications

- H1.0 HVAC Legend
- H2.0 HVAC Floor Plan
- H2.1 HVAC Roof Plan
- H3.0 HVAC Details
- H4.0 HVAC Schedules & Controls
- H5.0 HVAC Specifications

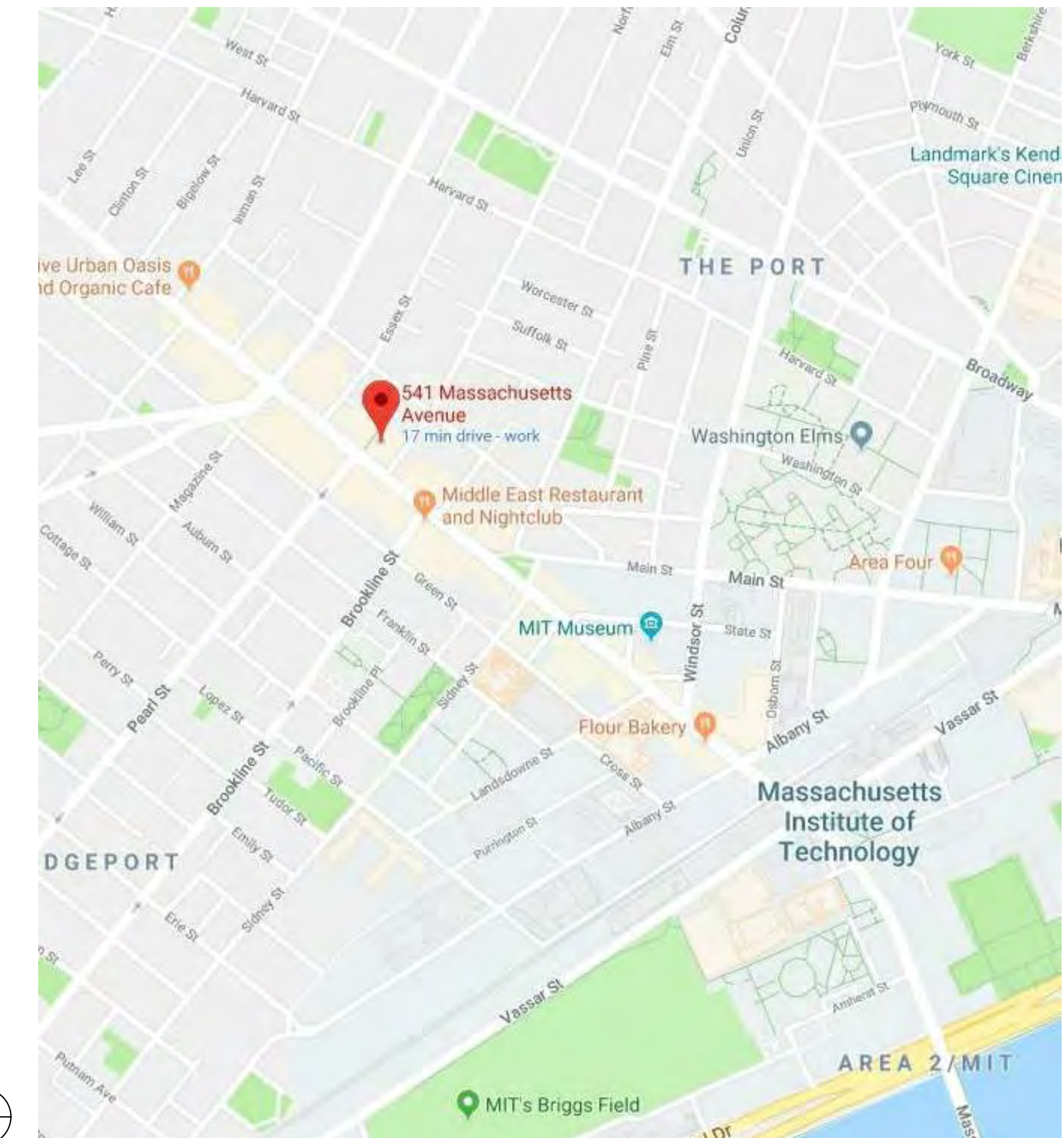
- E1.0 Legends, Details, Notes & Abbreviations
- E2.0 Lighting Plan - First Floor
- E3.0 Power & Data Plan - First Floor
- E3.1 Fire Alarm Plan - First Floor
- E4.0 Panel Board Schedules
- E4.1 Equipment Schedules
- E5.0 Specifications

SEC-01 Proposed Security Plan

BUILDING CODE SUMMARY					
<b>USE/ OCCUPANCY</b>		USE GROUP M _MERCANTILE			
<b>BUILDING CODE</b>		780 CMR	MASSACHUSETTS STATE BUILDING CODE (MSBC) - 9TH EDITION MSBC IS AMENDED VERSION OF 2015 IBC		
<b>OTHER APPLICABLE CODES</b>		521 CMR NFPA-1 NFPA-101 NFPA-70 NFPA-72 248 CMR IMC 2015 IECC 2015 780 CMR	AMERICANS WITH DISABILITIES ACT (ADA) ACCESSIBILITY GUIDELINES, 2010 EDITION MASSACHUSETTS ARCHITECTURAL ACCESS BOARD (MAAB) FIRE CODE, 2014 EDITION OF NEC LIFE SAFETY CODE NATIONAL ELECTRICAL CODE, 2017 EDITION FIRE ALARM COMMONWEALTH OF MASSACHUSETTS FUEL GAS AND PLUMBING CODE INTERNATIONAL MECHANICAL CODE INTERNATIONAL ENERGY CONSERVATION CODE MA STRETCH CODE AMENDMENT: APPENDIX 115AA		
<b>CONSTRUCTION TYPE/ GENERAL BUILDING LIMITATIONS</b>		CONSTRUCTION TYPE TYPE III B			
<b>ITEM</b>	<b>ALLOWED</b>	<b>PROVIDED</b>	<b>COMMENTS</b>		
BUILDING HEIGHT	55'	15'-9"	IBC 2015: TABLE 504.3		
BUILDING AREA (PER STORY)	12,500 SF	6025 SF	IBC 2015: TABLE 506.2		
<b>FIRE RESISTANCE RATINGS OF STRUCTURAL ELEMENTS</b>					
<b>ITEM</b>	<b>REQUIRED</b>	<b>PROVIDED</b>	<b>COMMENTS</b>		
PRIMARY STRUCTURAL FRAME	0 HR	0 HR	IBC 2015: TABLE 601		
LOADBEARING WALL (EXTERIOR)	2 HR	2 HR	IBC 2015: TABLE 601		
LOADBEARING WALL (INTERIOR)	0 HR	1 HR	IBC 2015: TABLE 601		
NON-LOADBEARING WALL	0 HR	1 HR	IBC 2015: TABLE 601		
FLOOR CONSTRUCTION	0 HR	1 HR	IBC 2015: TABLE 601		
ROOF CONSTRUCTION	0 HR	0 HR	IBC 2015: TABLE 601		
<b>MEANS OF EGRESS</b>					
<b>ITEM</b>	<b>REQUIRED</b>	<b>PROVIDED</b>	<b>COMMENTS</b>		
MAXIMUM TRAVEL DISTANCE, GROUP M	200'	100'	IBC 2015: SECTION 1017.2		
DEAD END CORRIDOR	20' MAX	None	IBC 2015: SECTION 1020.4		
EXIT ENCLOSURE RATING	1 HR	1 HR	IBC 2015: SECTION 1020.1		
CORRIDOR RATING	0 HR	1 HR	IBC 2015: TABLE 1020.1		
<b>AREA</b>	<b>GROSS SF</b>	<b>SF/ OC.</b>	<b>REQUIRED OCCUPANT LOAD</b>	<b>EGRESS CAPACITY PROVIDED</b>	<b>COMMENTS</b>
MERCANTILE	4,547 SF	60	92	1800 (2 - 36" HORIZONTAL EXITS)	IBC 2015: SECTION 1005
BUSINESS	1582 SF	100	78		
			16		

# REVOLUTIONARY CLINICS RMD

541 Massachusetts Avenue, Cambridge, MA 02139



CONSTRUCTION SET

September 24th, 2018



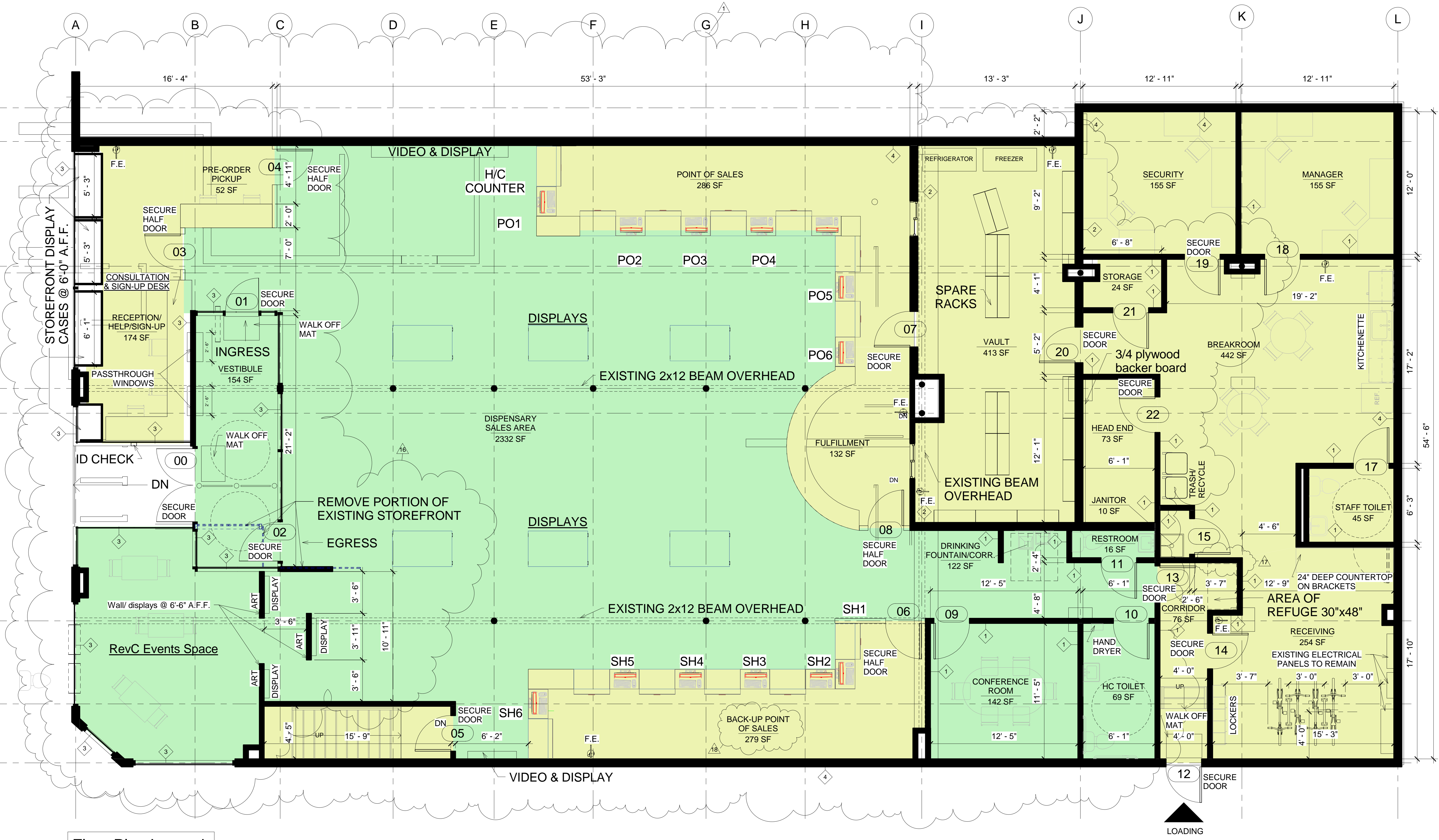




No.	Description	Date
1	Revised Floor Plan	06.06.18
16	Art gallery and storefront display cases	07.20.18
17	*Door 16 deleted	08.08.18
18	Back Up POS, Basement Plan, Cover page	09.24.18



Date	07.25.18
Project number	REV C
Drawn by	L.P. WORTH
Checked by	B. HAMPTON



**Floor Plan Legend**

- Limited Access
- Restricted Area

**1 PROPOSED FLOOR PLAN**  
1/4" = 1'-0"

