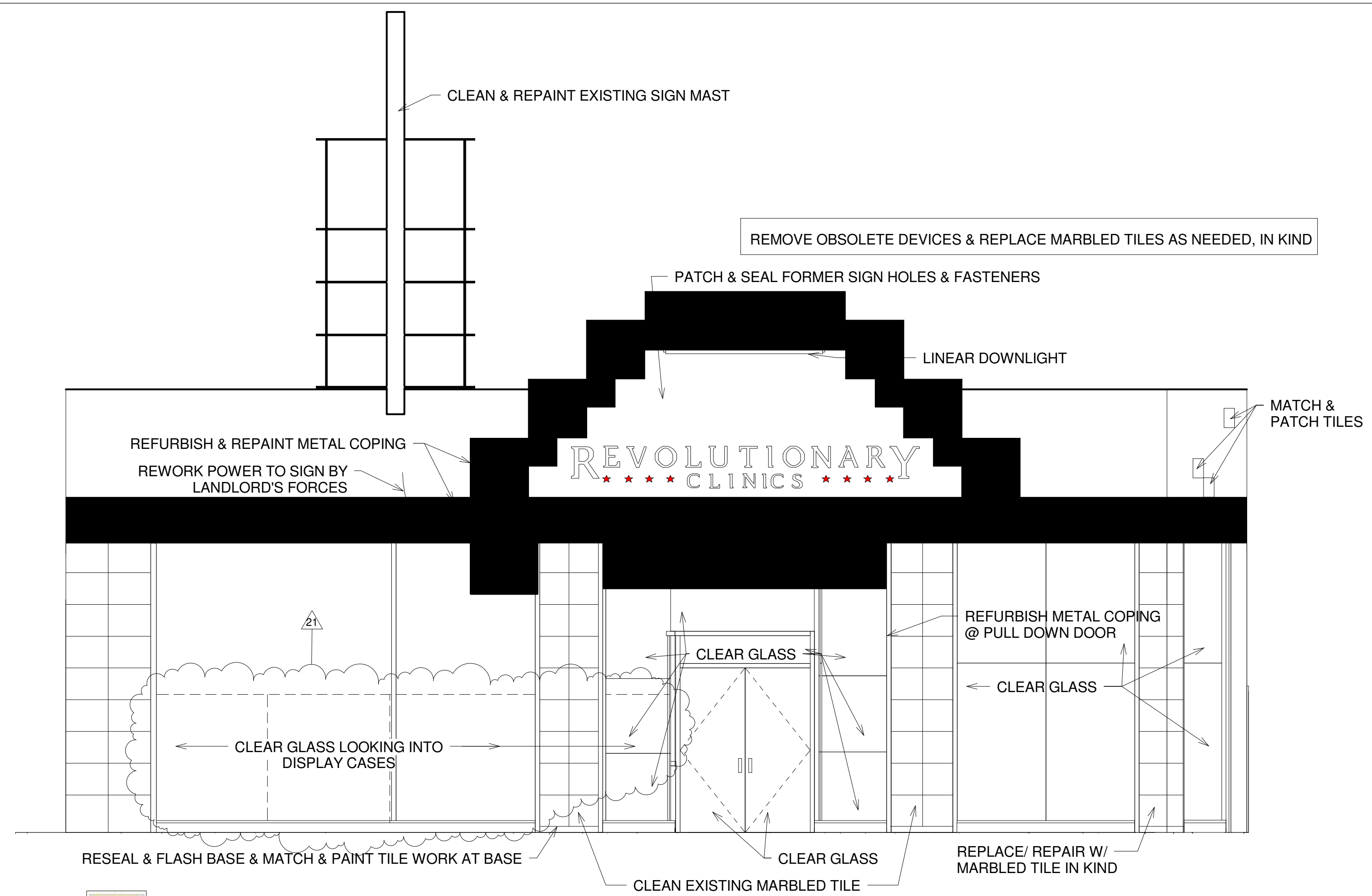


No.	Description	Date
18	Back Up POS, Basement Plan, Cover page	09.24.18

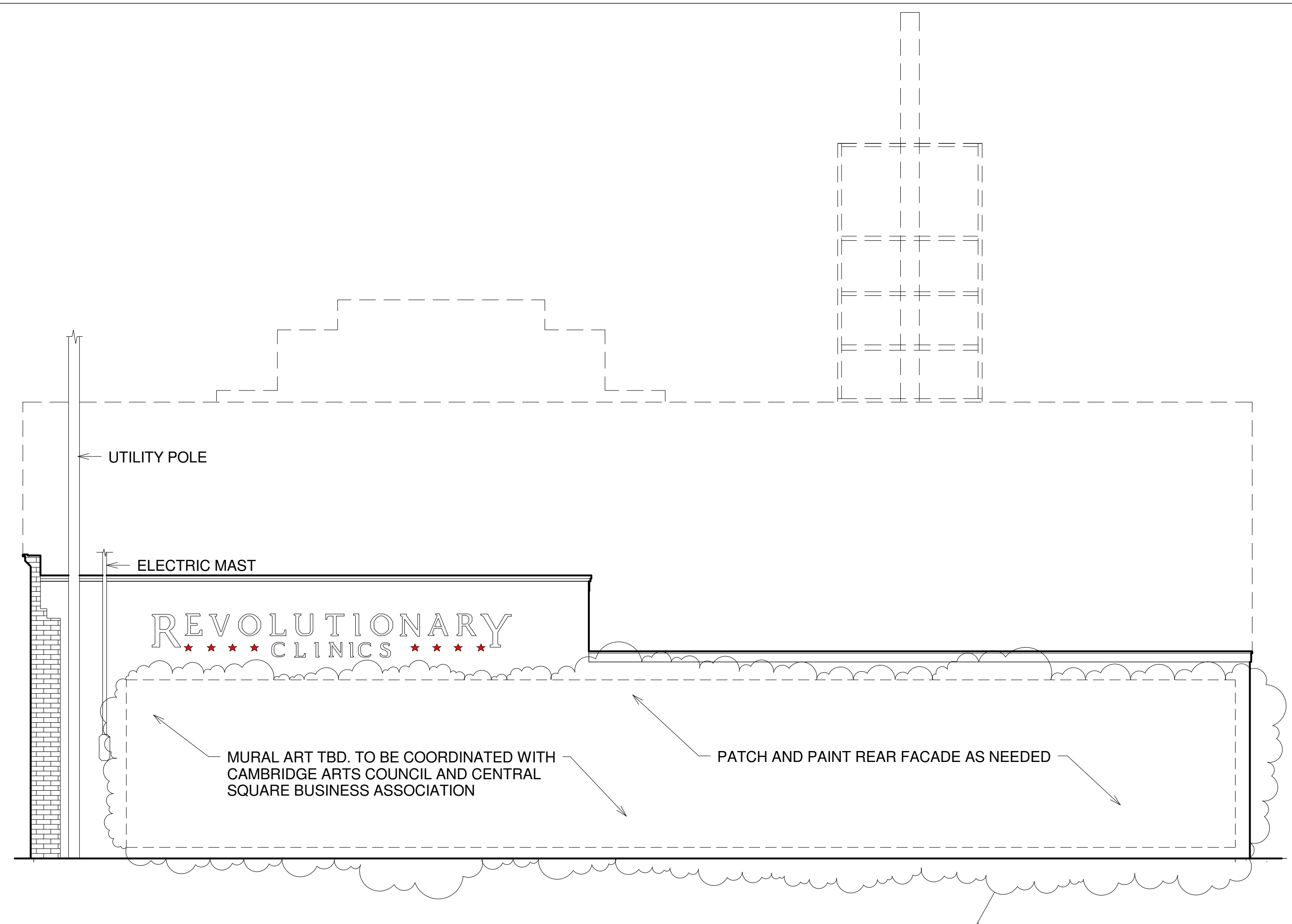


1 PROPOSED ROOF PLAN
 1/4" = 1'-0"

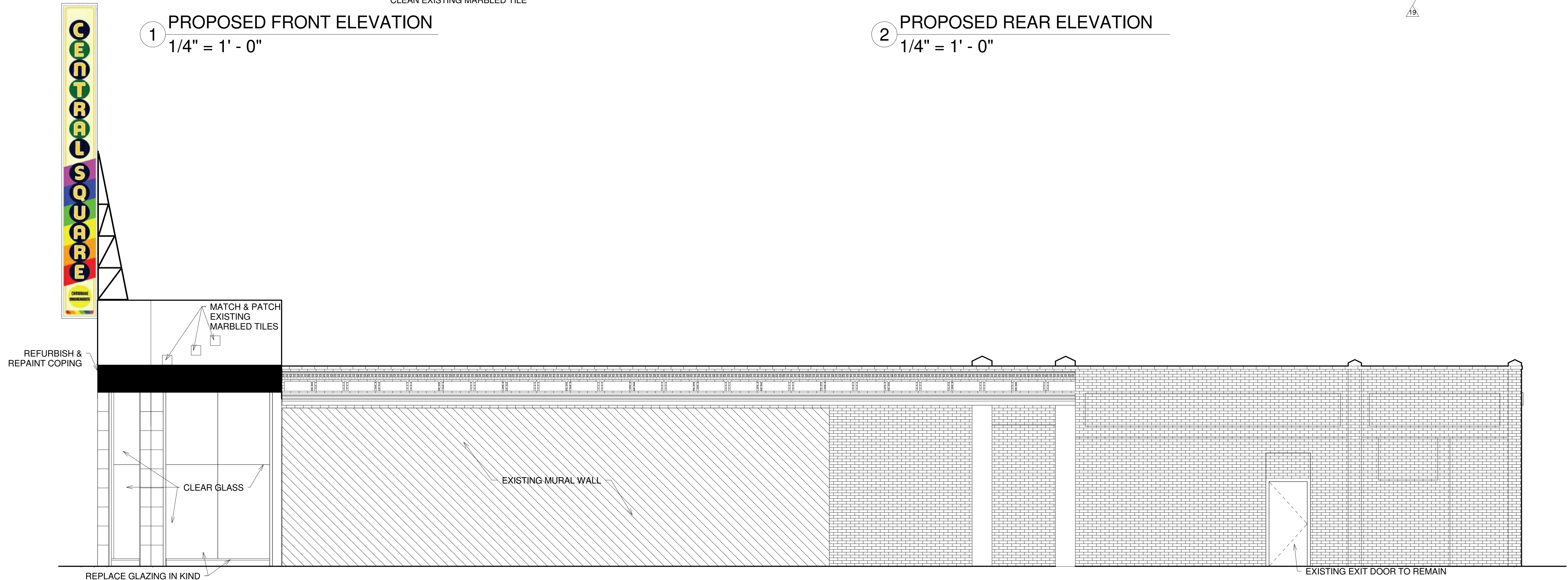
No.	Description	Date
19	Corner Retail Space	10.18.18
21	Revised Egress Door	11.06.18



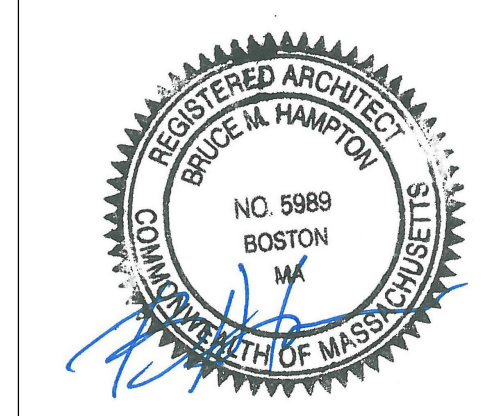
1 PROPOSED FRONT ELEVATION
 1/4" = 1' - 0"



2 PROPOSED REAR ELEVATION
 1/4" = 1' - 0"



3 PROPOSED SIDE ELEVATION
 1/4" = 1' - 0"

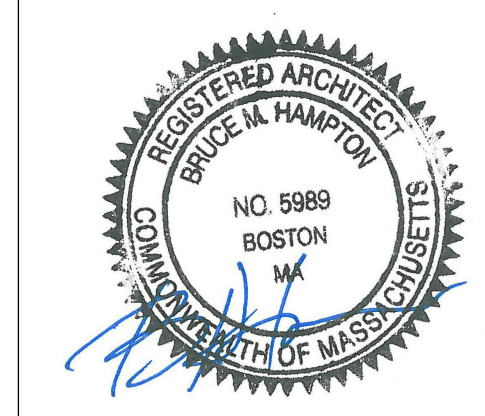
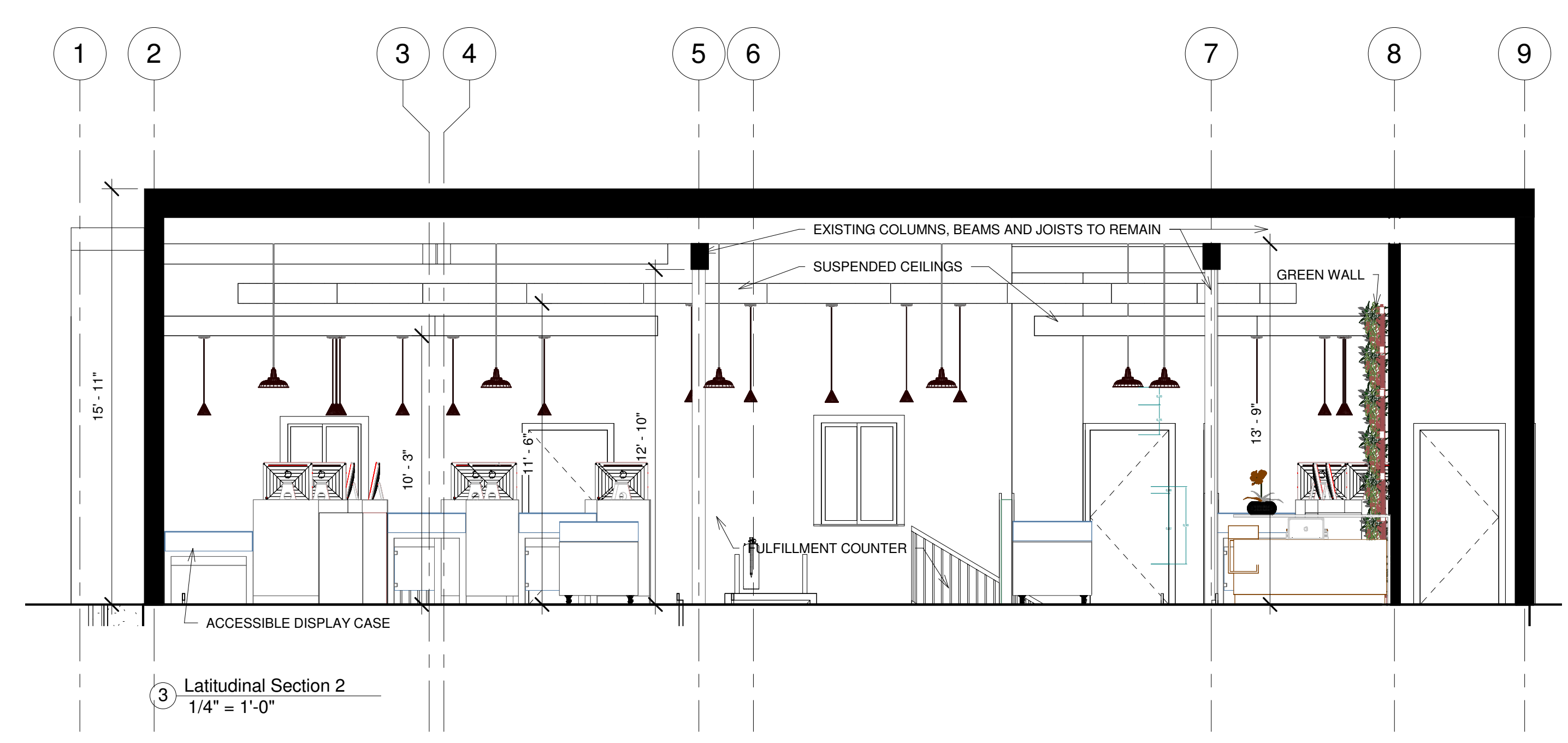
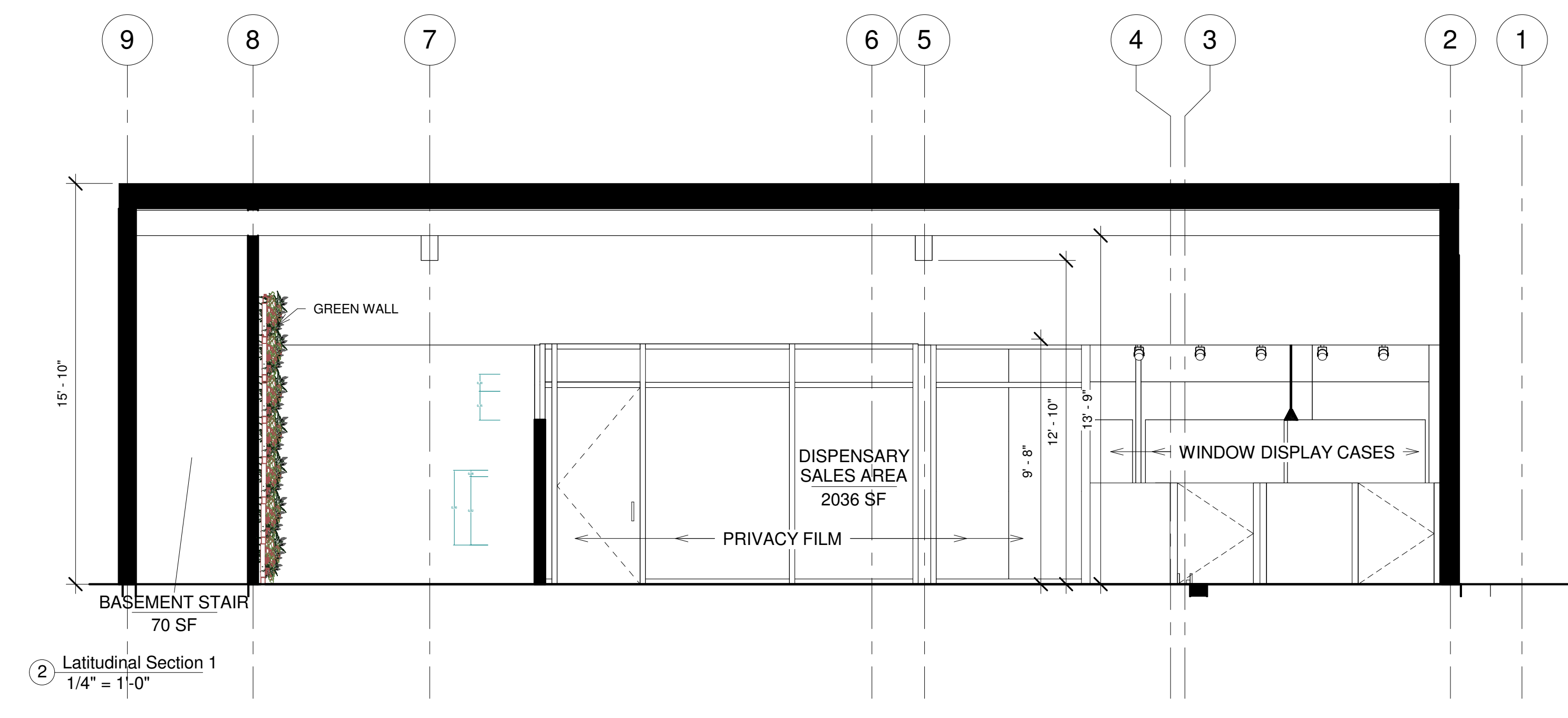
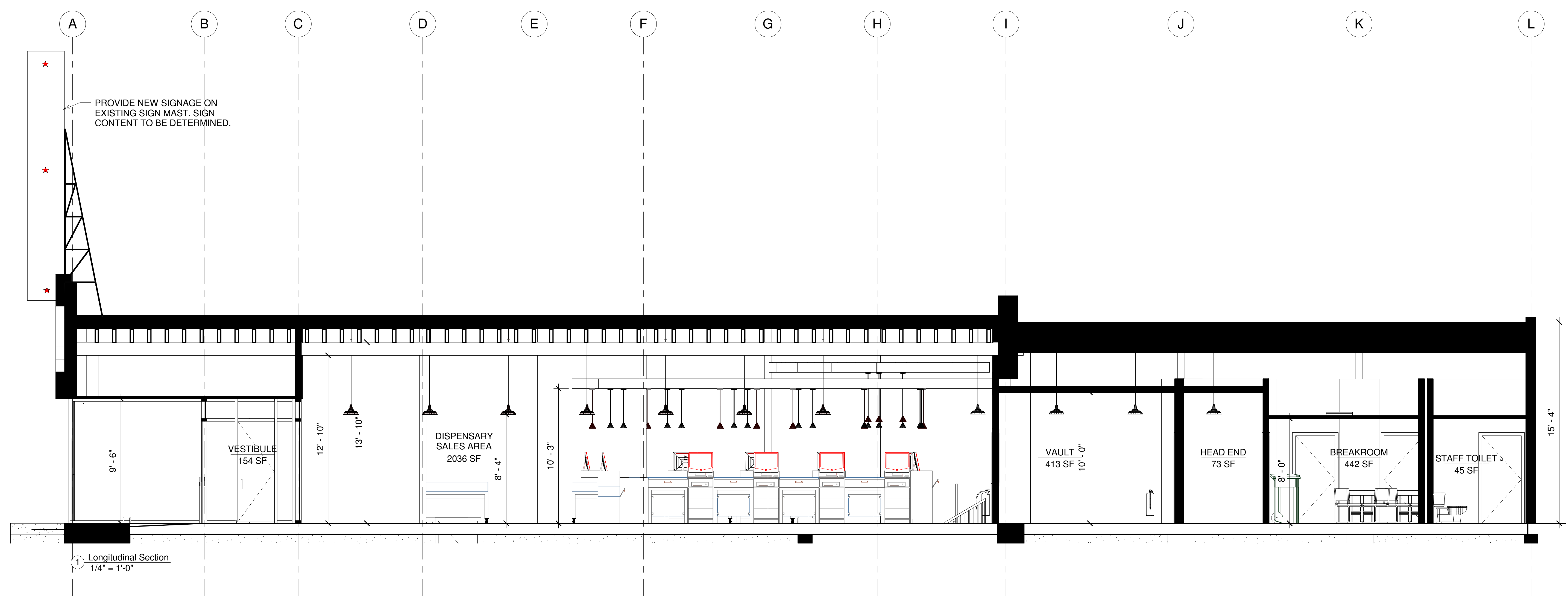


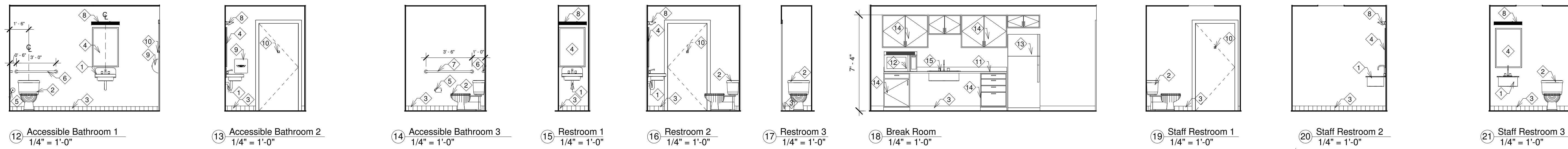
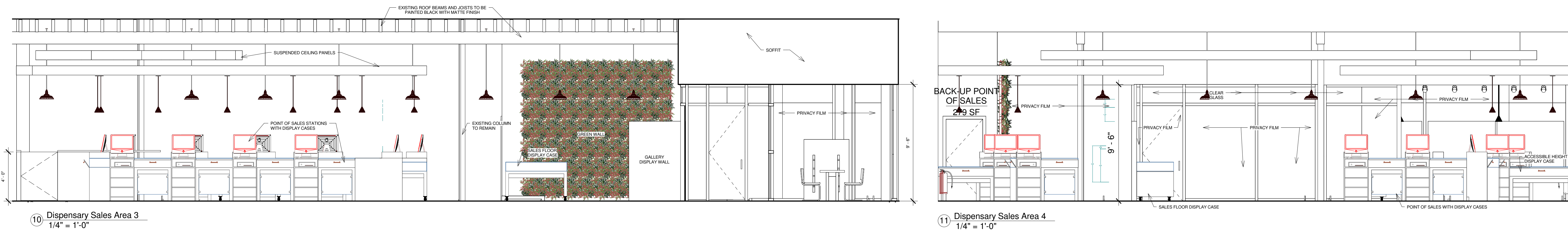
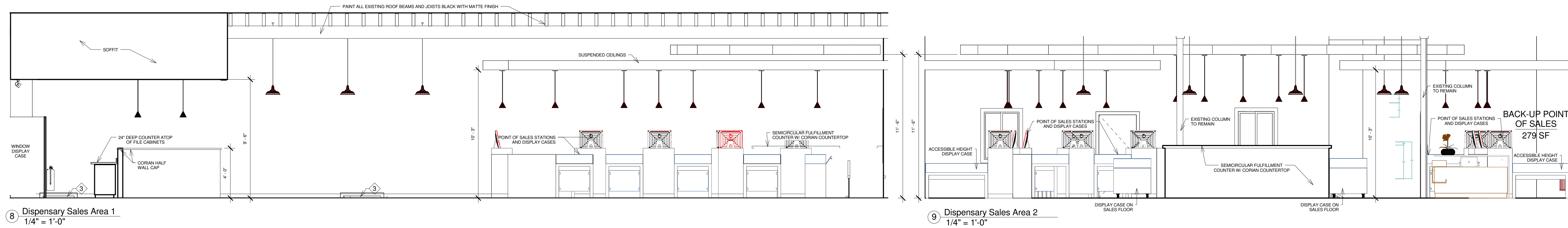
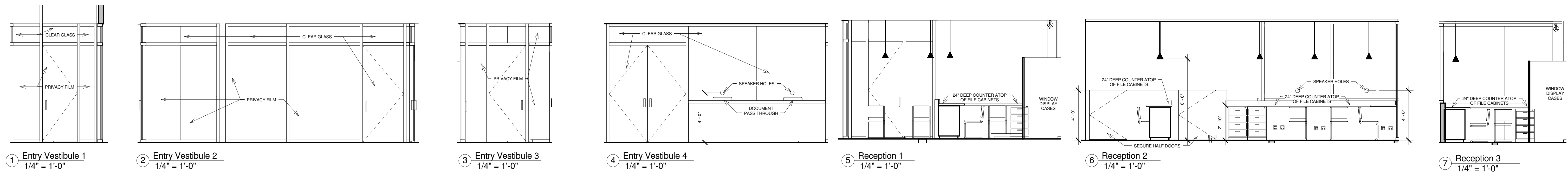
PROJECT
541 Mass Ave
 Cambridge, MA 02139
 Building Elevations

Date	07.25.18
Project number	REV C
Drawn by	L.P. WORTH
Checked by	B. HAMPTON

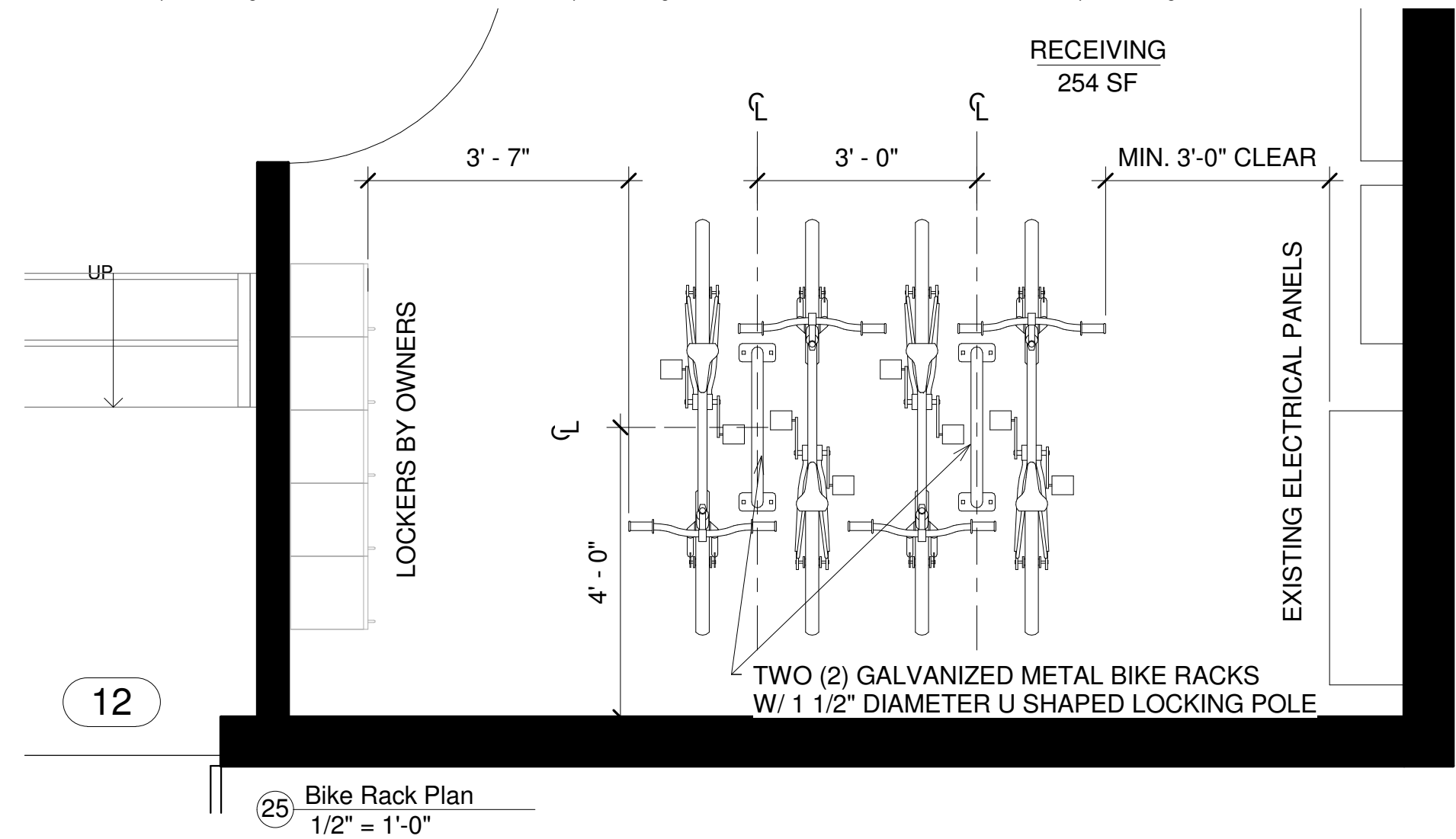
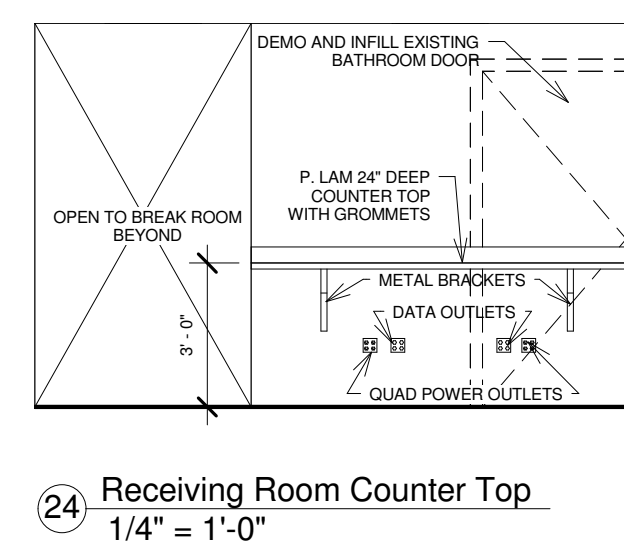
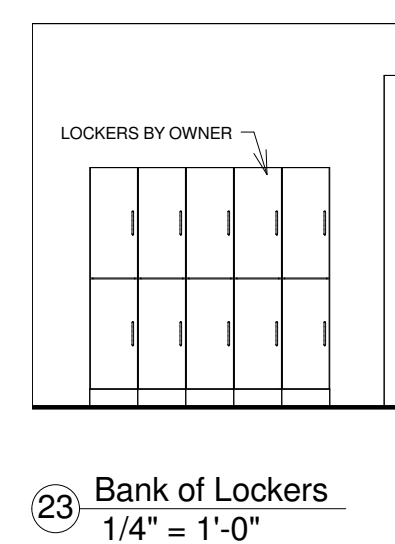
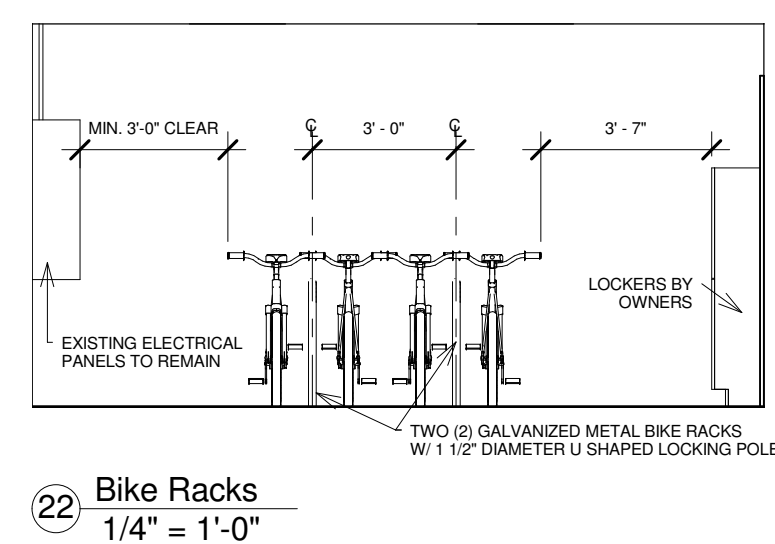
A-002.00

No.	Description	Date

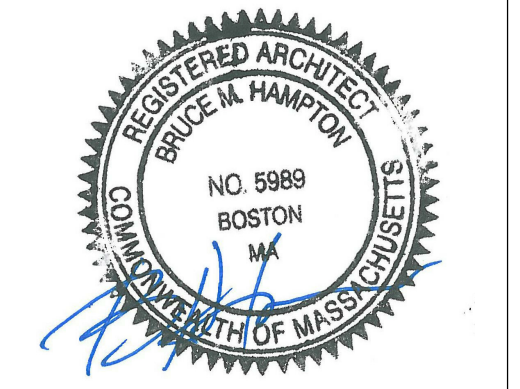


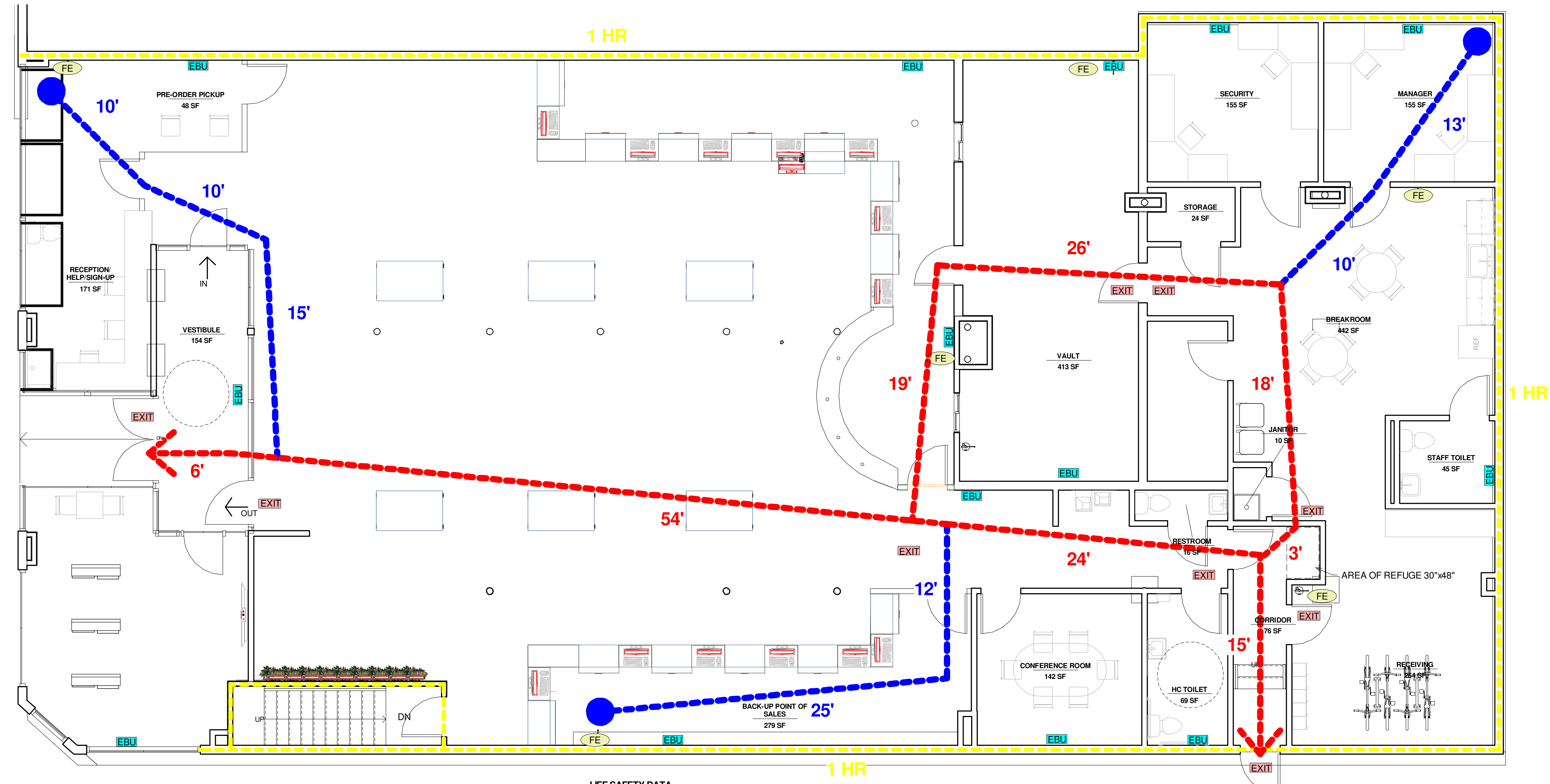


- ACCESSIBLE BATHROOM INTERIOR ELEVATIONS NOTES
- 1 Wall hung MAAB approved, lavatory sink with lever faucet @ 34\"/>
 - 2 1.28 gallon \"water saving\", comfort height water closet. See specification.
 - 3 4\"/>
 - 4 24x36 ADA wall mount mirror. Bottom of mirror mounted 40\"/>
 - 5 Surface mounted chrome toilet paper dispenser.
 - 6 36\"/>
 - 7 42\"/>
 - 8 Sconce light fixture mounted 6\"-8\" A.F.F.
 - 9 Wall mount ADA Xlerator hand dryer. See specifications.
 - 10 Chrome robe hook mounted 4\"-6\" A.F.F.
 - 11 24\" deep countertop. See spec.
 - 12 Microwave. See spec.
 - 13 Refrigerator. See spec.
 - 14 Wall and base cabinets. See spec.
 - 15 30\" single bay sink. See spec.



No.	Description	Date

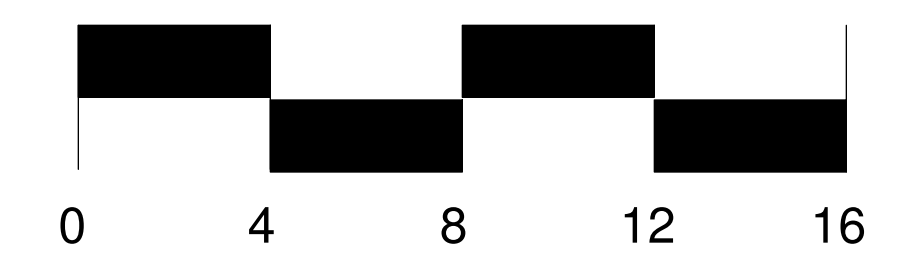




1 PROPOSED LIFE SAFETY PLAN
 1/4" = 1'-0"

LIFE SAFETY DATA

OCCUPANT LOAD	99
NUMBER OF EXITS	MIN. 2
REQUIRED	4
PROVIDED	
EXIT COMPONENT WIDTH	
STAIRS	
REQUIRED	MIN. 3'-0"
PROVIDED	4'-0"
CORRIDORS	
REQUIRED	MIN. 3'-0"
PROVIDED	4'-0"
DOORS	
REQUIRED	MIN. 32"x80"
PROVIDED	36"x80"
DEAD END CORRIDOR	
REQUIRED	MAX 50'
PROVIDED	N/A
MAXIMUM TRAVEL DISTANCE	
REQUIRED	200'
PROVIDED	110'
COMMON PATH OF TRAVEL	
REQUIRED	75'
PROVIDED	45'
FIRE RATED WALL	
EBU	EXIT SIGN EXIT
FIRE EXTINGUISHER FE	



No.	Description	Date



PROJECT
 541 Mass Ave
 Cambridge, MA 02139
 Proposed Life Safety Plan

Date	07.25.18
Project number	REV C
Drawn by	L.P. WORTH
Checked by	B. HAMPTON