



RECEIVED 11 1983 PB.# 34

RECEIVED BY  
OFFICE OF CITY CLERK  
APR 12 12 30 PM '83  
CAMBRIDGE, MASS.

CITY OF CAMBRIDGE, MASSACHUSETTS

# PLANNING BOARD

HALL ANNEX, 57 INMAN STREET, CAMBRIDGE 02139

## SPECIAL PERMIT APPLICATION

To the Planning Board of the City of Cambridge:

The undersigned hereby petitions the Planning Board for a Special Permit in accordance with Section \_\_\_\_\_ of the Zoning Ordinance. SECTION 11, SUBSECTION 11.665, SECTION 7, SUBSECTION 7.12B

Applicant: BOLT BERANEK AND NEWMAN INC.

(name)

491-1850

(phone)

10 Moulton Street, Cambridge, MA 02238

(address)

Michael Nacey

Vice President Administration

Signature of Authorized Representative

Type of Special Permit: Parkway Overlay District

Multi-Family, Townhouse, Parkway Overlay District, Harvard Square Overlay District, Elderly Congregate Housing, Flood Plain Overlay District, Other

Location of Premises: 10 Moulton Street

Zoning District: 02

Maps, Plans submitted: Site plan, building elevations, 2 sign elevations

Reports, Documents submitted: Descriptions of 2 sign structures: main corporate identification sign and wall mounted identification sign.

Documents, Plans referenced: \_\_\_\_\_

This application has been reviewed and is hereby certified complete.

4/12/83  
Date

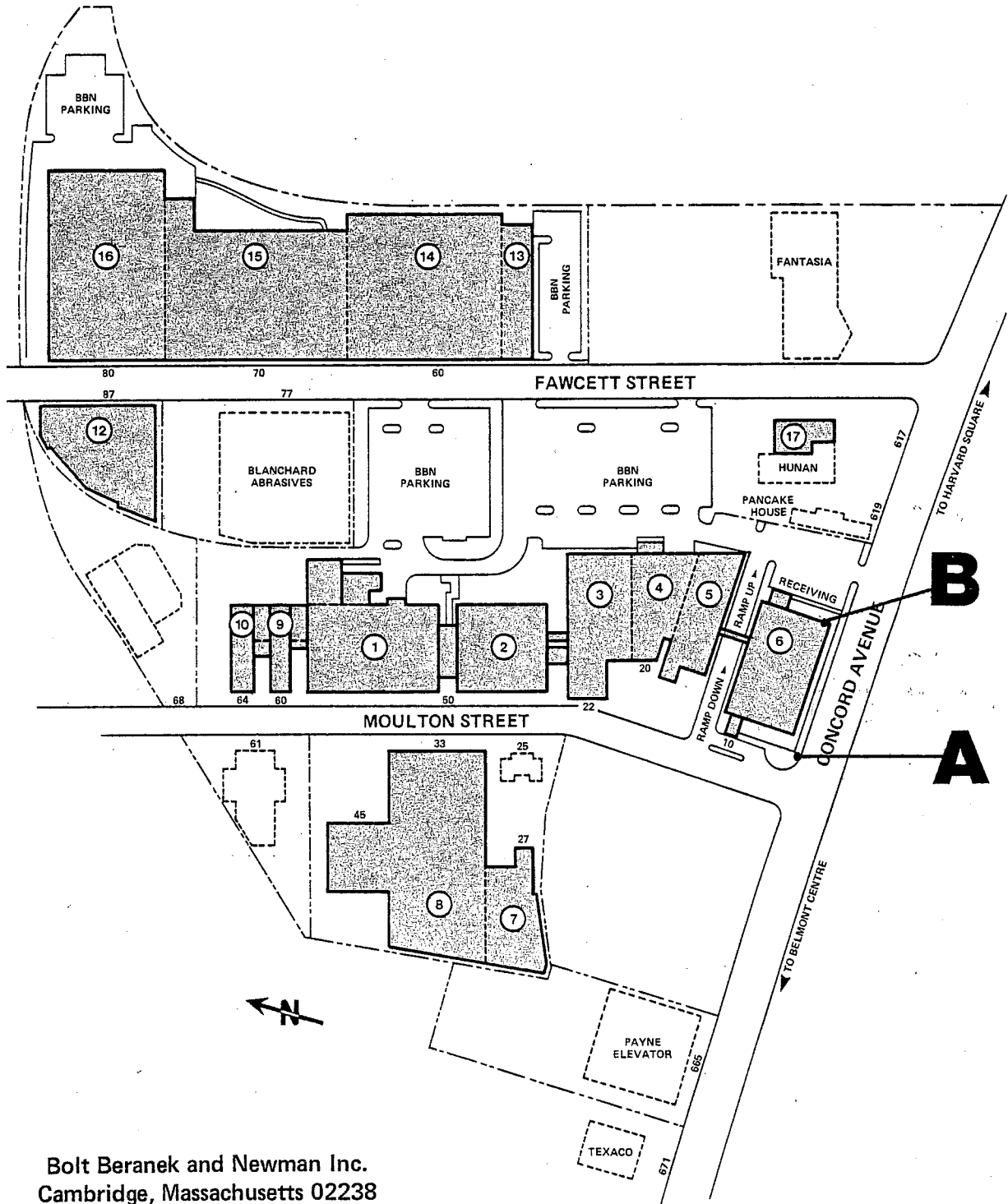
Elizabeth Nacey  
For the Cambridge Planning Board

Bolt Beranek and Newman Inc., Cambridge, MA 02238

Maps and Plans Submitted for Parkway Overlay District  
Special Permit Application

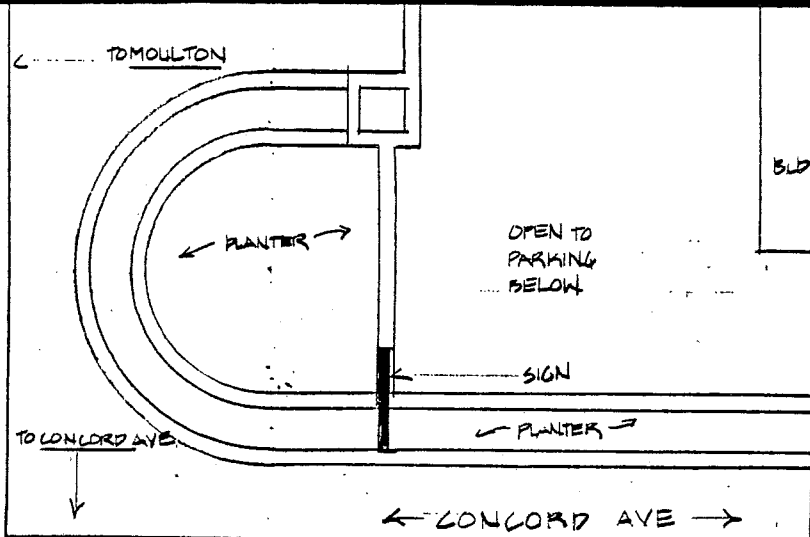
1. Site Plan Showing Sign Locations
  - A Main Corporate Identification Sign
  - B Wall Mounted Identification Sign
2. A Elevation: Sign Face
  - Main Corporate Identification Sign
  - Concord Avenue
3. A Section
  - Main Corporate Identification Sign
  - Concord Avenue
4. A Elevation
  - Main Corporate Identification Sign
  - Concord Avenue
5. B East Elevation, Fawcett Street
  - Wall Mounted Identification Sign
6. B Elevation: Sign Face
  - Wall Mounted Identification Sign
7. B Section Through Parapet
  - Wall Mounted Identification Sign

SITE PLAN SHOWING SIGN LOCATIONS



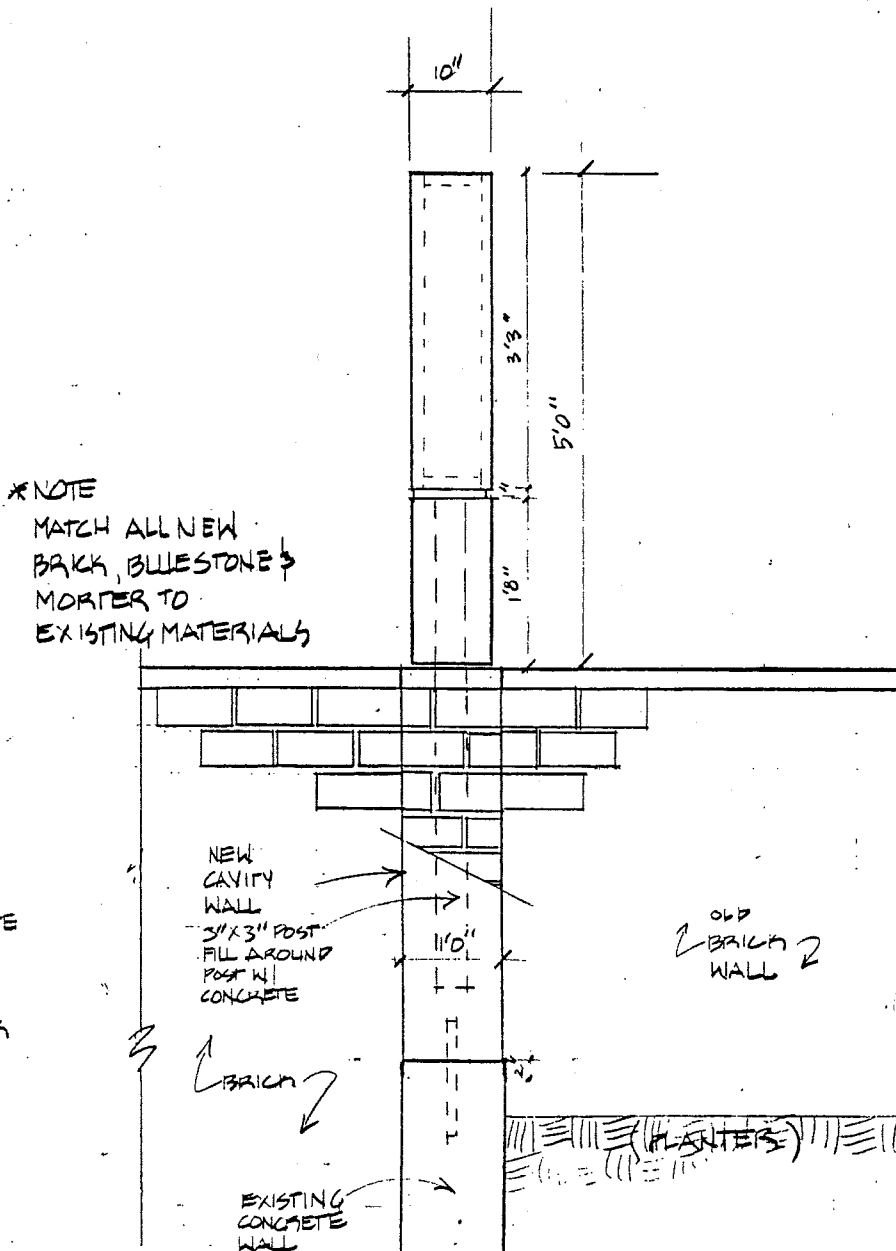
Bolt Beranek and Newman Inc.  
Cambridge, Massachusetts 02238

- A** MAIN CORPORATE IDENTIFICATION SIGN
- B** WALL MOUNTED IDENTIFICATION SIGN



LOCATION PLAN

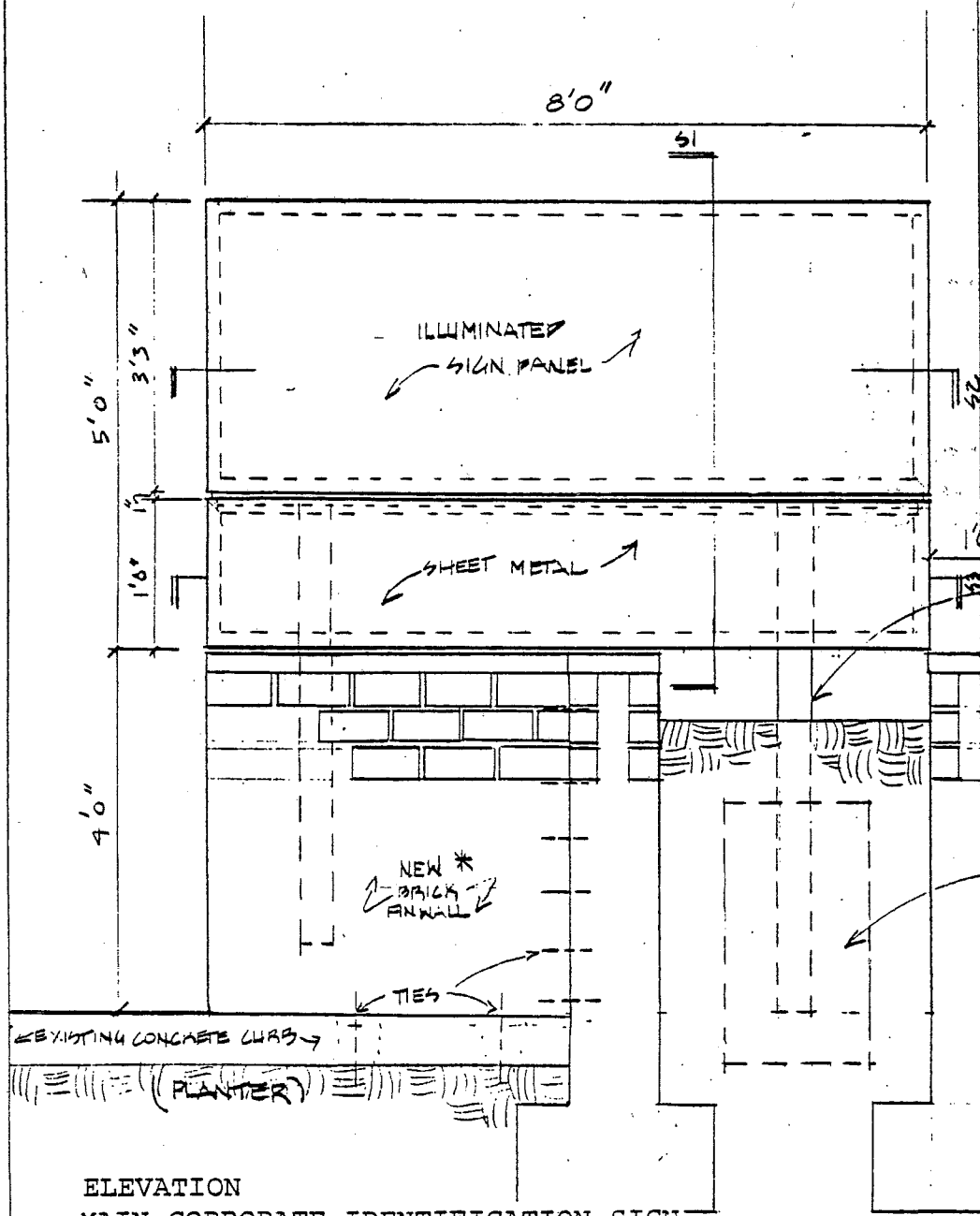
NO SCALE



SECTION A  
MAIN CORPORATE IDENTIFICATION SIGN  
CONCORD AVENUE

2" - 1'0"

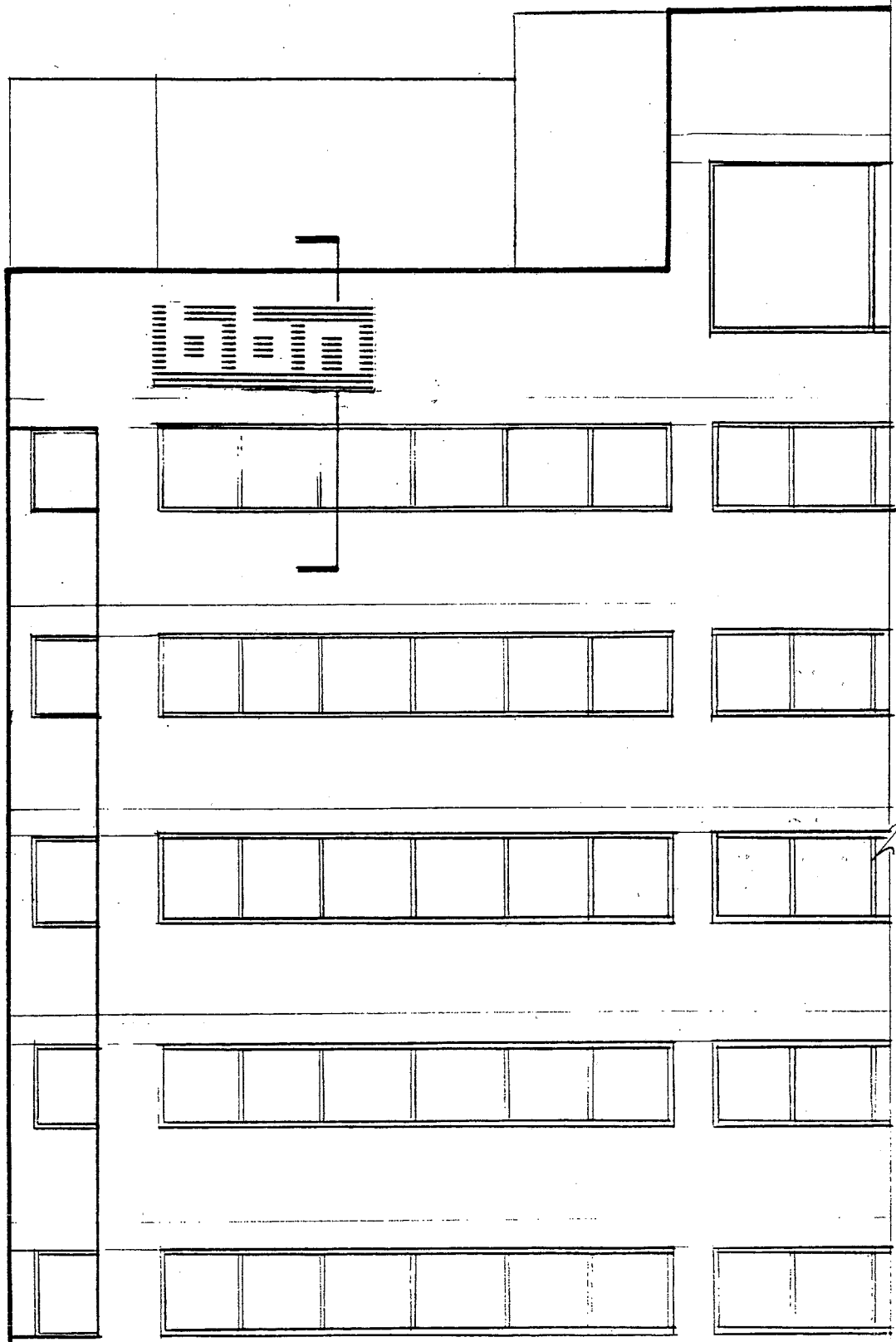
A



**A**

ELEVATION  
MAIN CORPORATE IDENTIFICATION SIGN  
CONCORD AVENUE

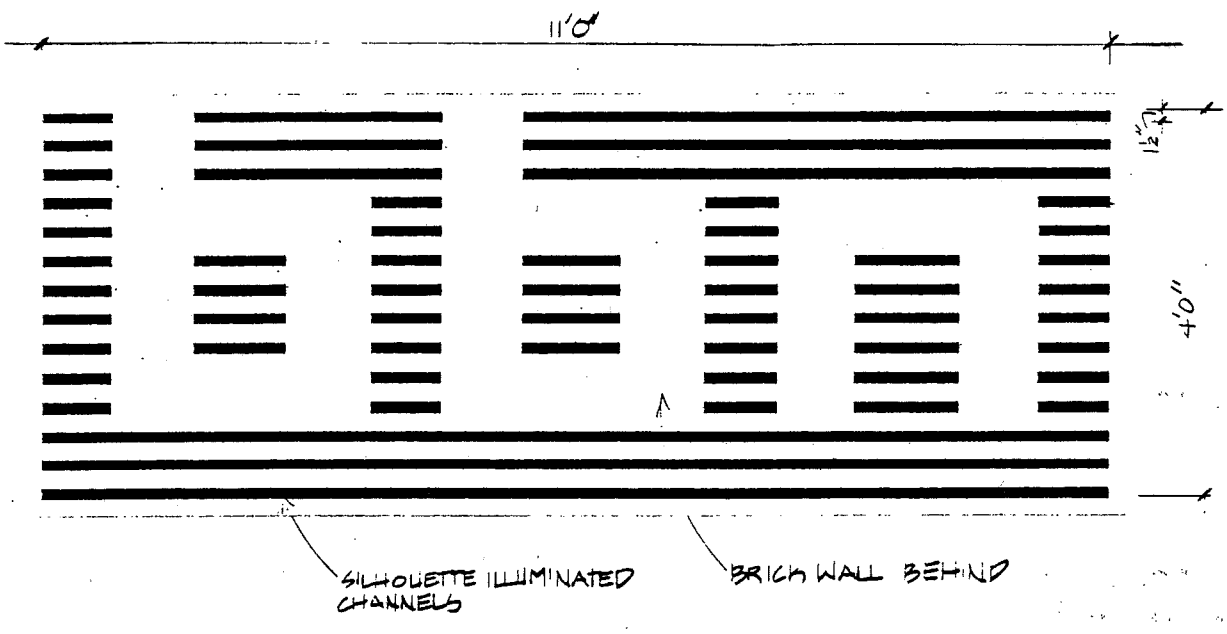
1/2"=1'0"



**B** EAST ELEVATION, FAWCETT STREET  
WALL MOUNTED IDENTIFICATION SIGN

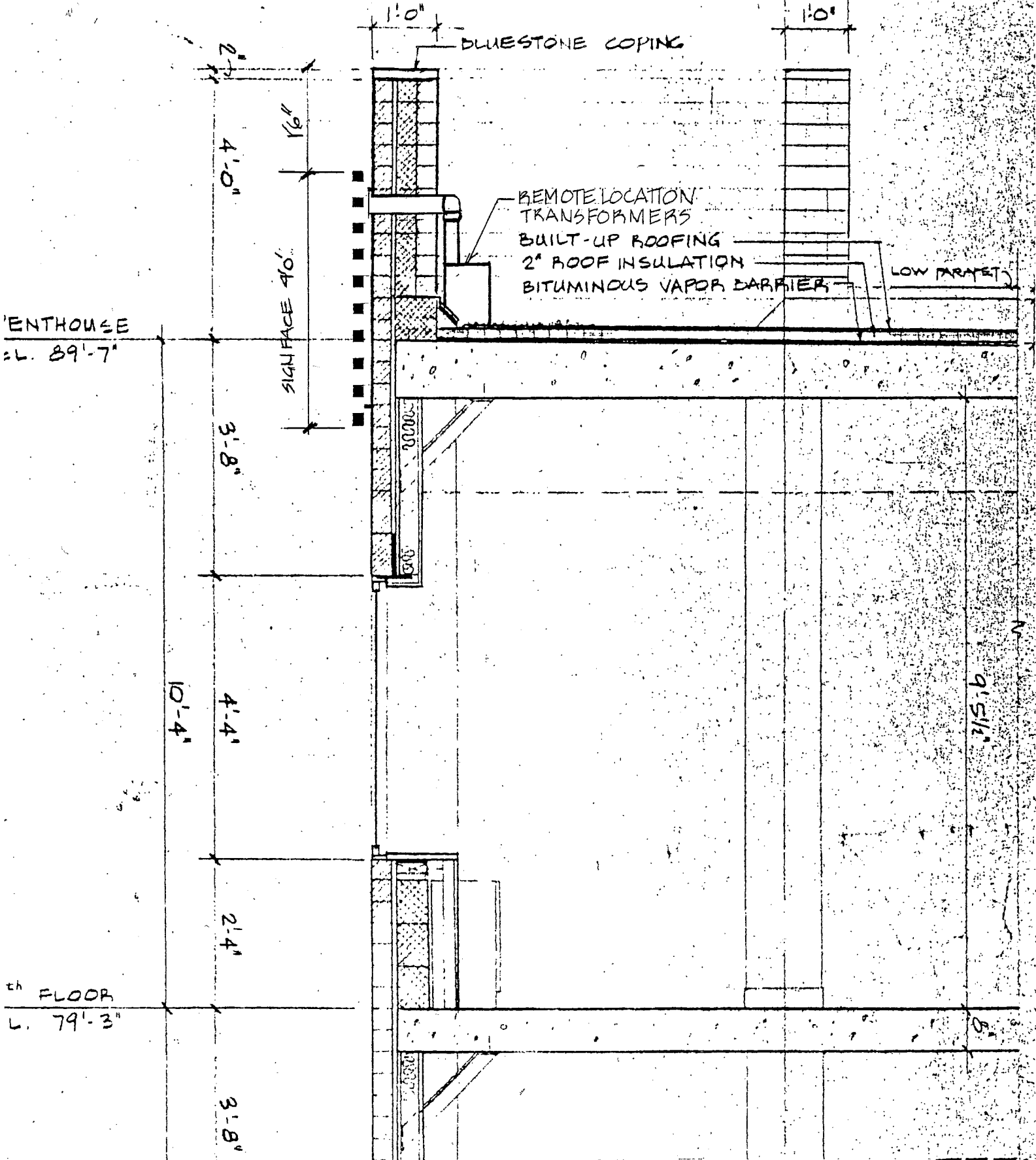
60'

4



SCALE: 1/2" = 1'0"

**B** ELEVATION: SIGN FACE  
WALL MOUNTED IDENTIFICATION SIGN



**B** SECTION THROUGH PARAPET  
WALL MOUNTED IDENTIFICATION SIGN