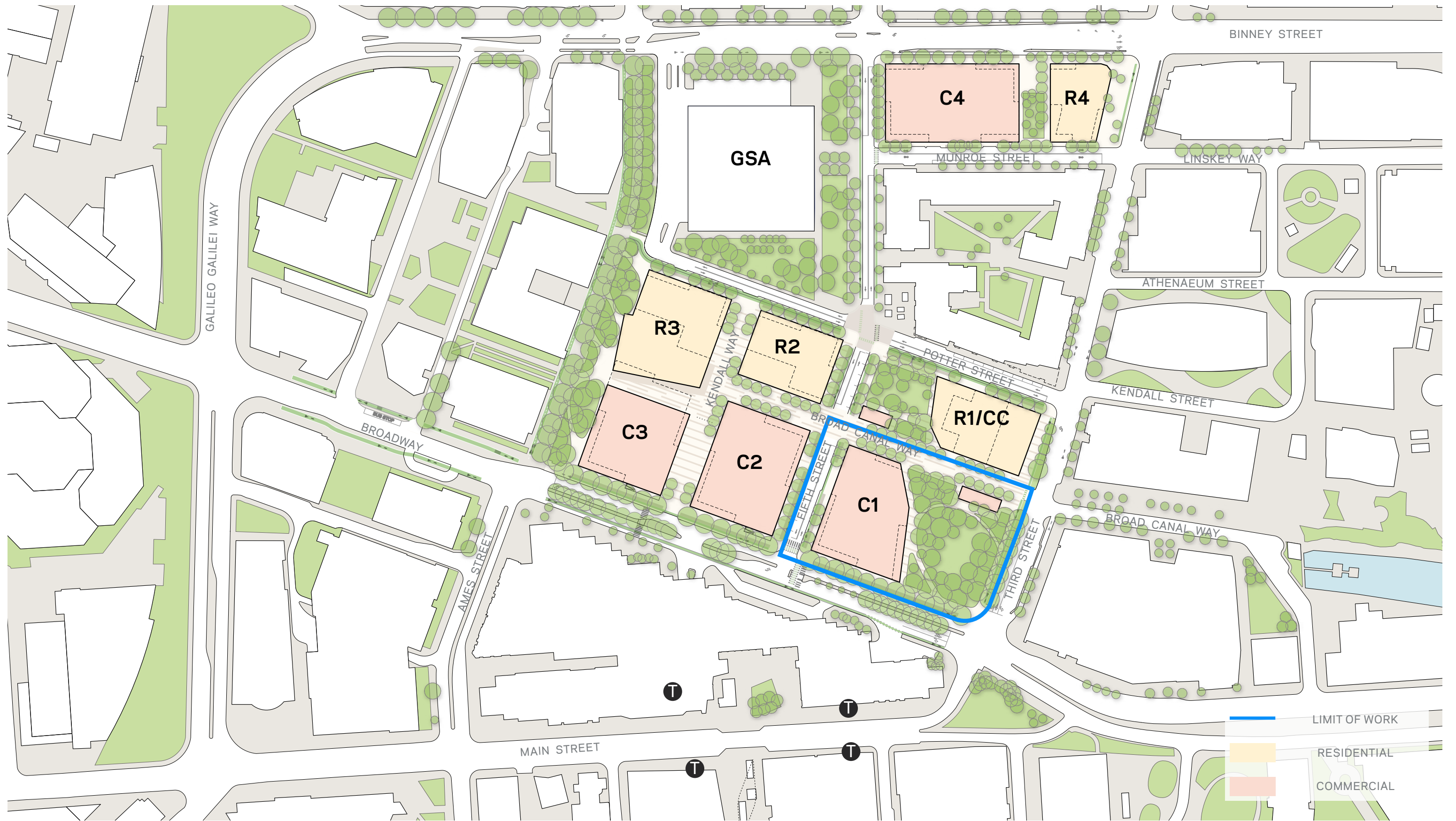


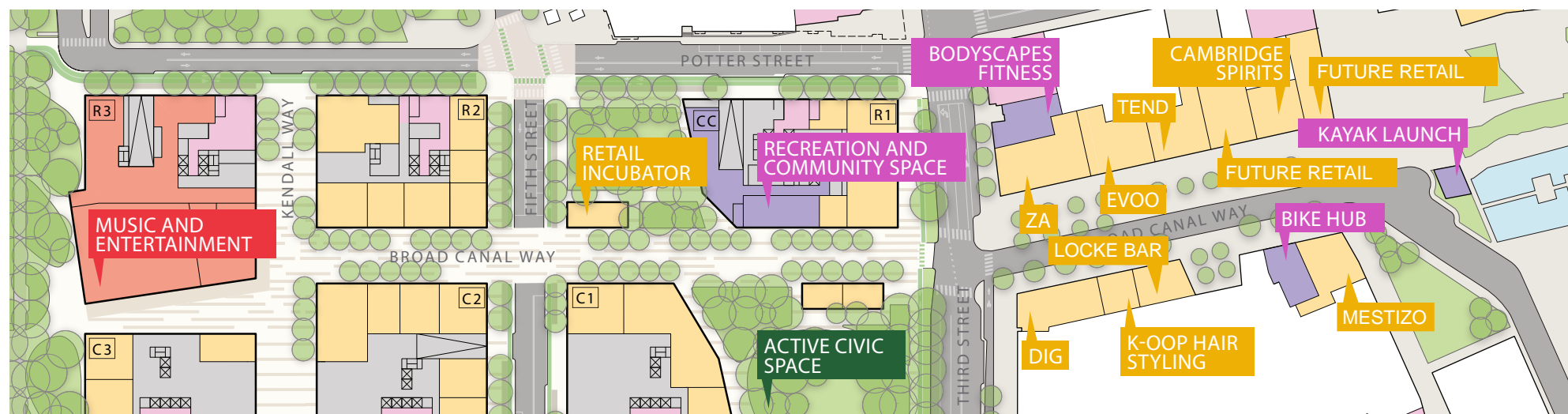
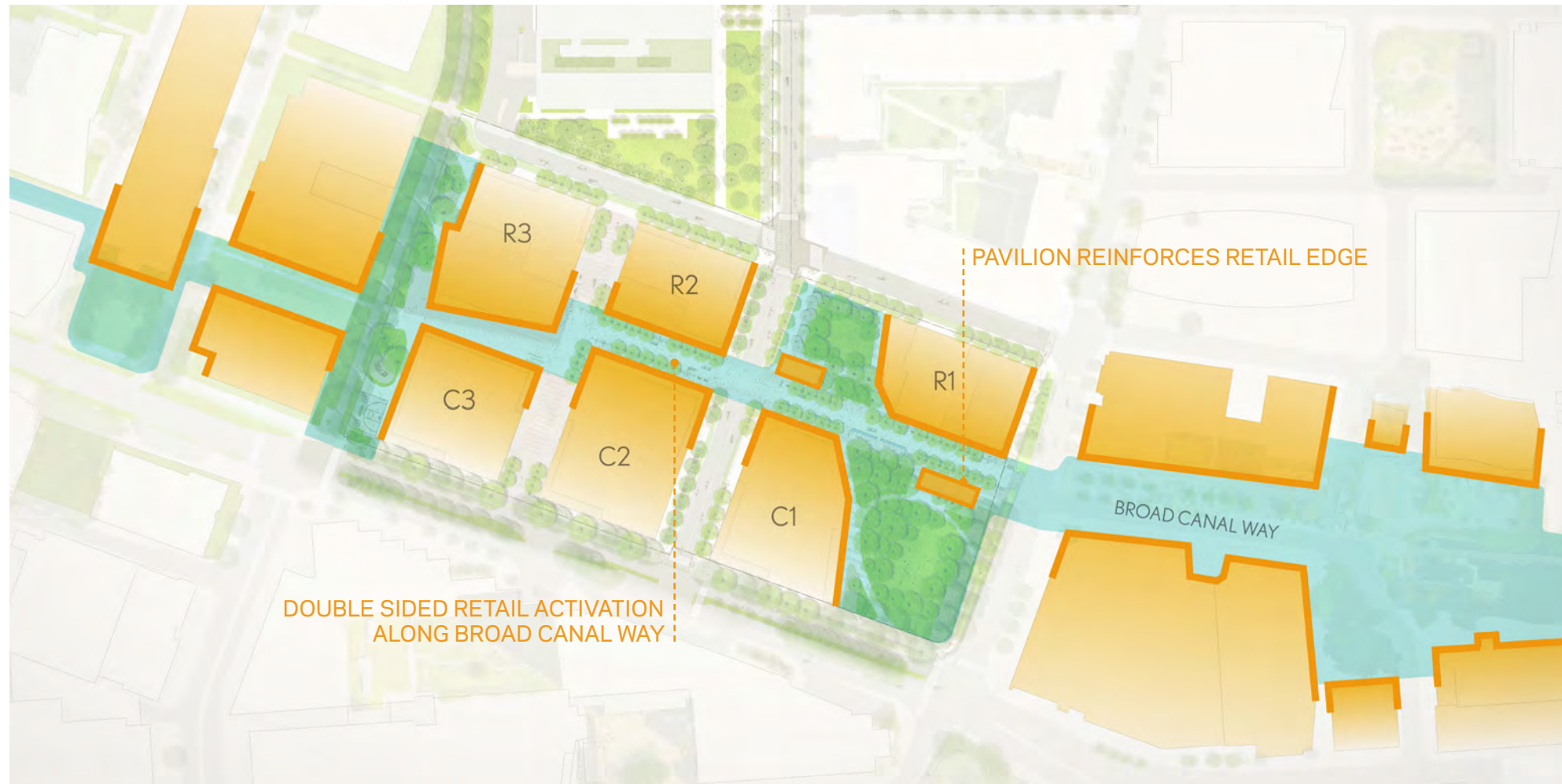
Third Street Park & Open Space



9/26 PLANNING BOARD RECOMMENDED AREAS FOR FURTHER STUDY

1. Pavilion sizing and siting
2. Pavilion programming and design modifications
3. Reduction of the park's hardscape in favor of more green space
4. Pedestrian flow through the park





SPECIAL PERMIT FINAL DEVELOPMENT PLAN DIAGRAM

Precedent Projects



Cafe Beatrice | Cambridge Crossing, Cambridge



Shake Shack | Madison Square Park, New York



Locke Bar | Kendall Square, Cambridge



Taschen Store | The Grove, Los Angeles



Sip Cafe | Post Office Square, Boston



Holiday Shops | Bryant Park, New York



The Current | Seaport, Boston

Previous Submission



Revised Design



Pavilion Updates Since 9/26 Planning Board Meeting

Increased Transparency

Reduced Pavilion Footprint Approximately 10%

Extended Canopies and Created More Playful, Fluid Roofline

View from Third Street Park



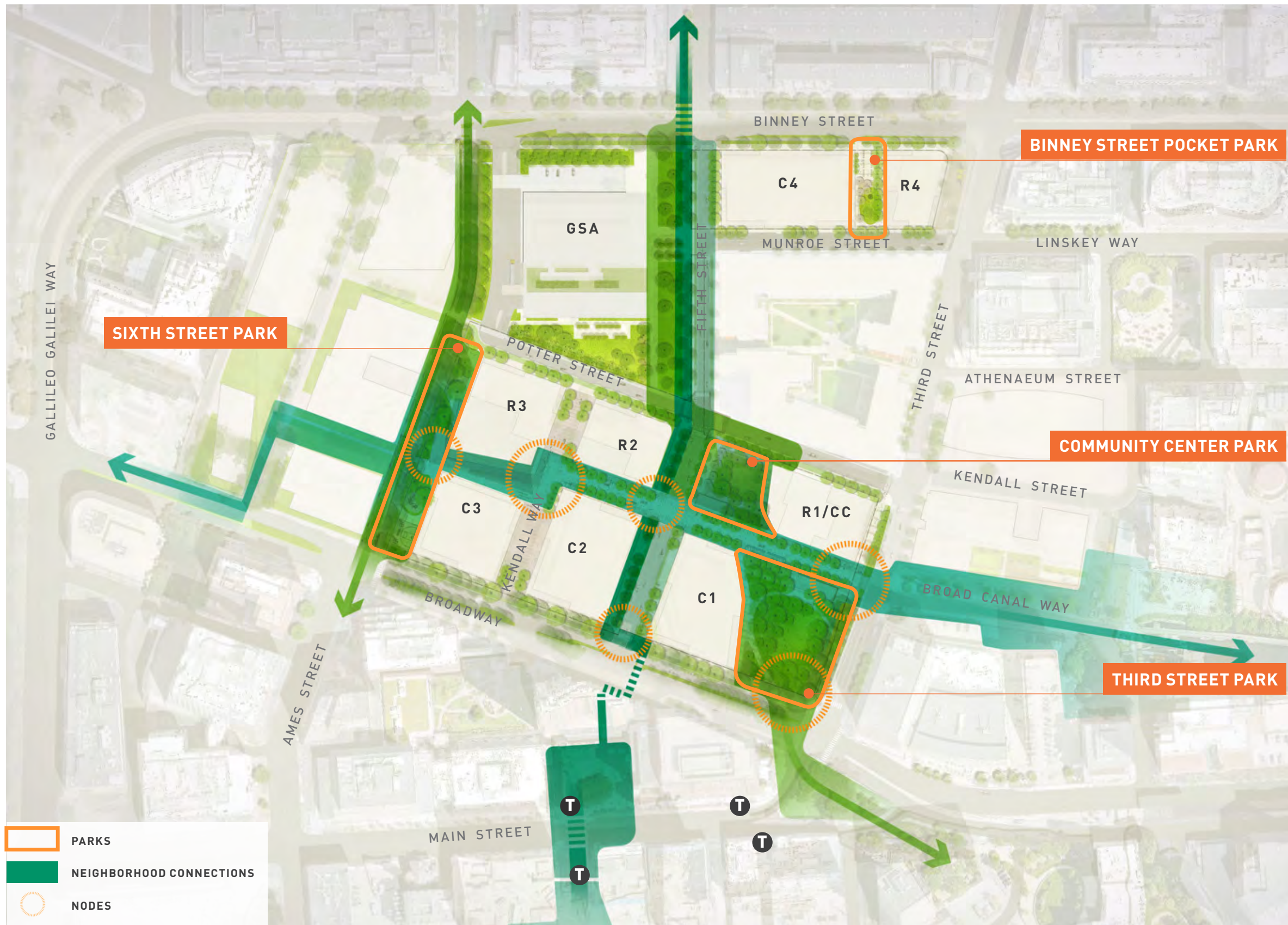






Figure D1: Illustrative Connections Plan

DESIGN PRINCIPLES ESTABLISHED THROUGH SPECIAL PERMIT AND COMMUNITY ENGAGEMENT

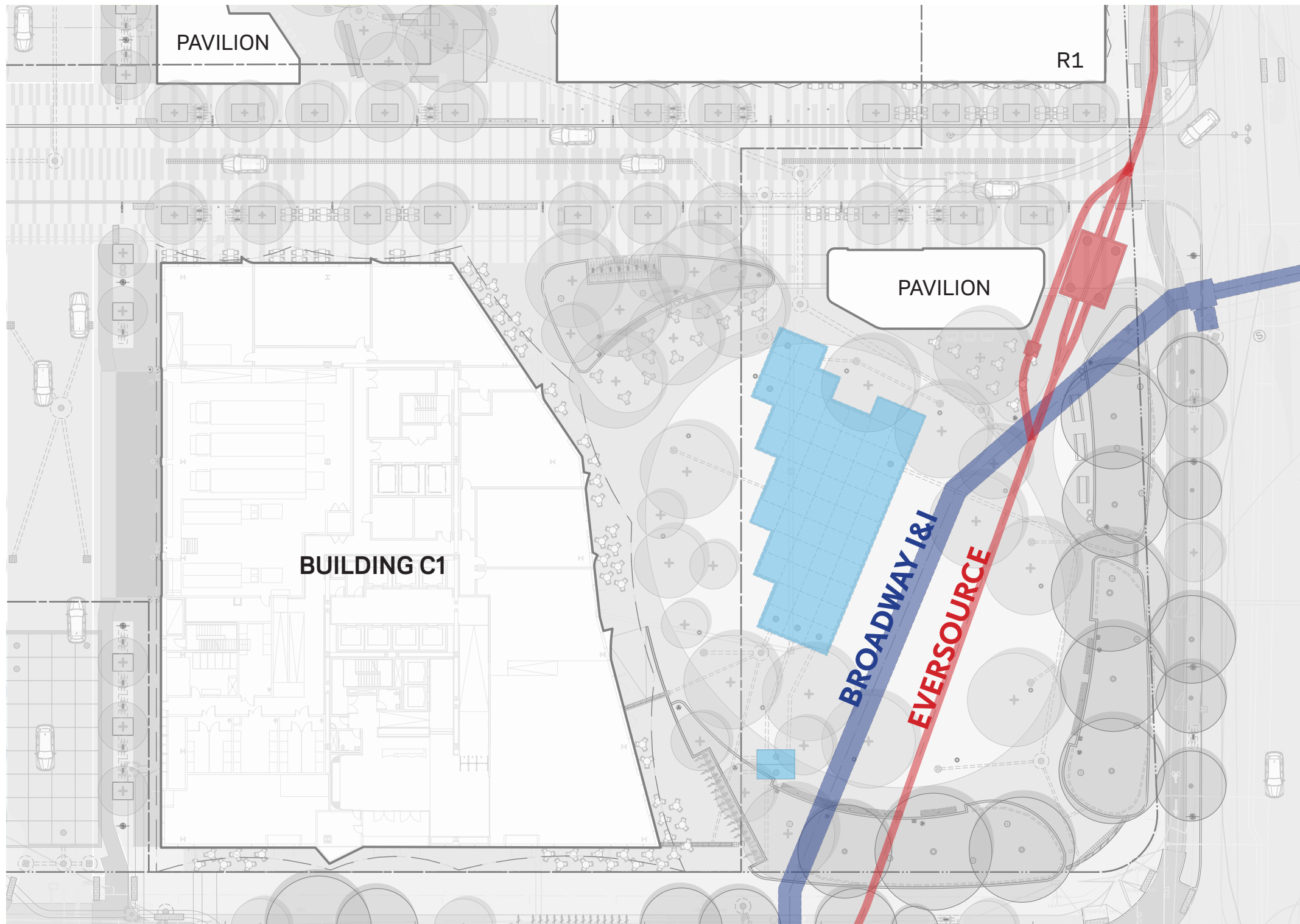
1. Prioritize a welcoming entry into the park at the corner of Broadway and Third Street.
2. Provide accessible and varied circulation routes to handle an expanding neighborhood population.
3. Provide a large open lawn for a variety of activities and events.
4. Provide infrastructure for community events and programming.
5. Activate the park edges with varied seating opportunities.
6. Preserve and enhance existing trees at the edges of Third Street and Broadway.
7. Enhance the Cambridge tree canopy with diverse tree species and supportive understory planting.



LEGEND

-  BUILDING ENTRANCE
-  PRIMARY BUILDING ENTRANCE
-  EXISTING TREE
-  PROPOSED TREE





LEGEND

- EVERSOURCE DUCTBANK AND VAULT
- BROADWAY I&I
- BELOW-GRADE STORMWATER RETENTION (RECONFIGURABLE)









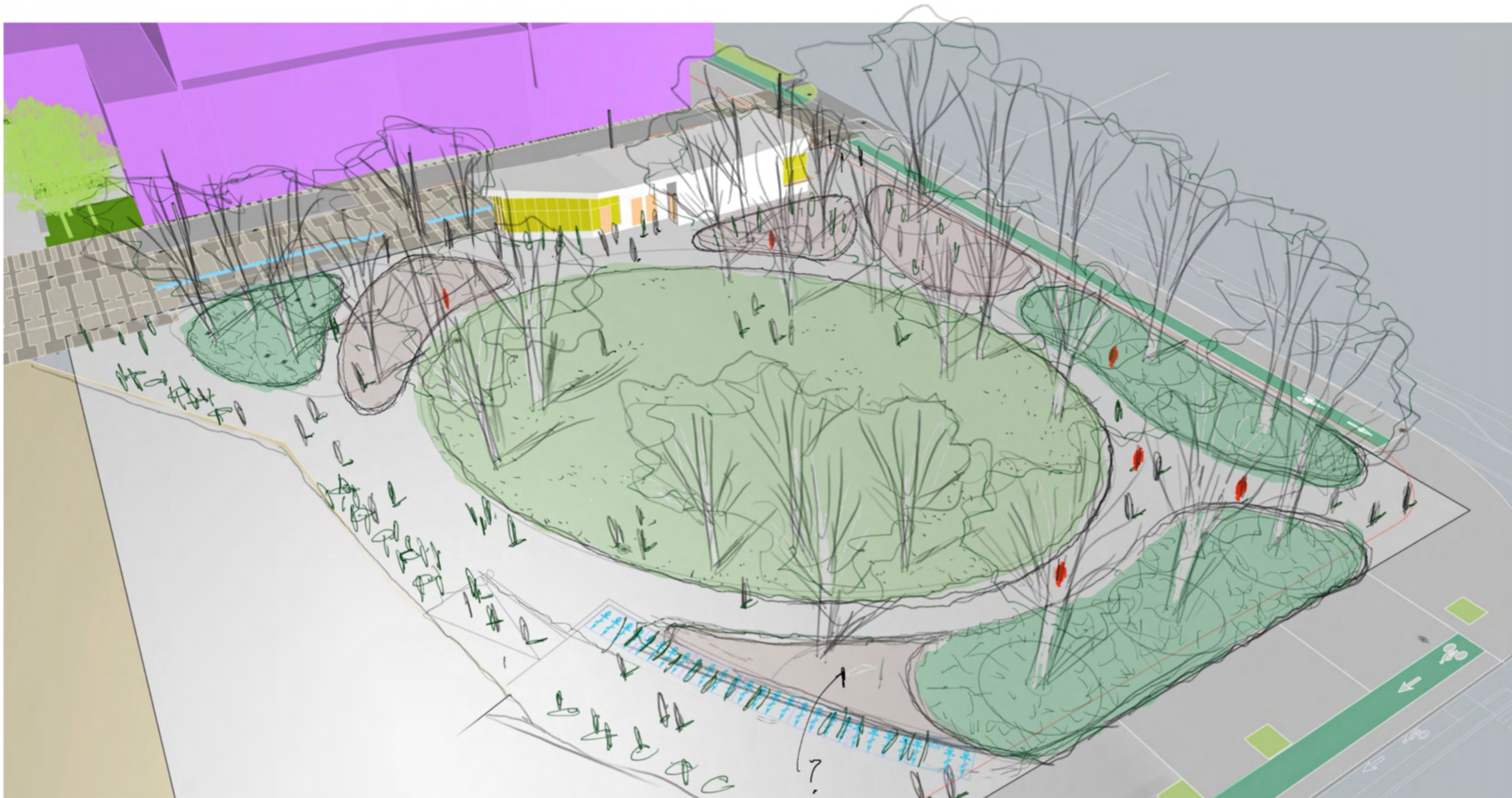
THIRD STREET PARK DESIGN UPDATES

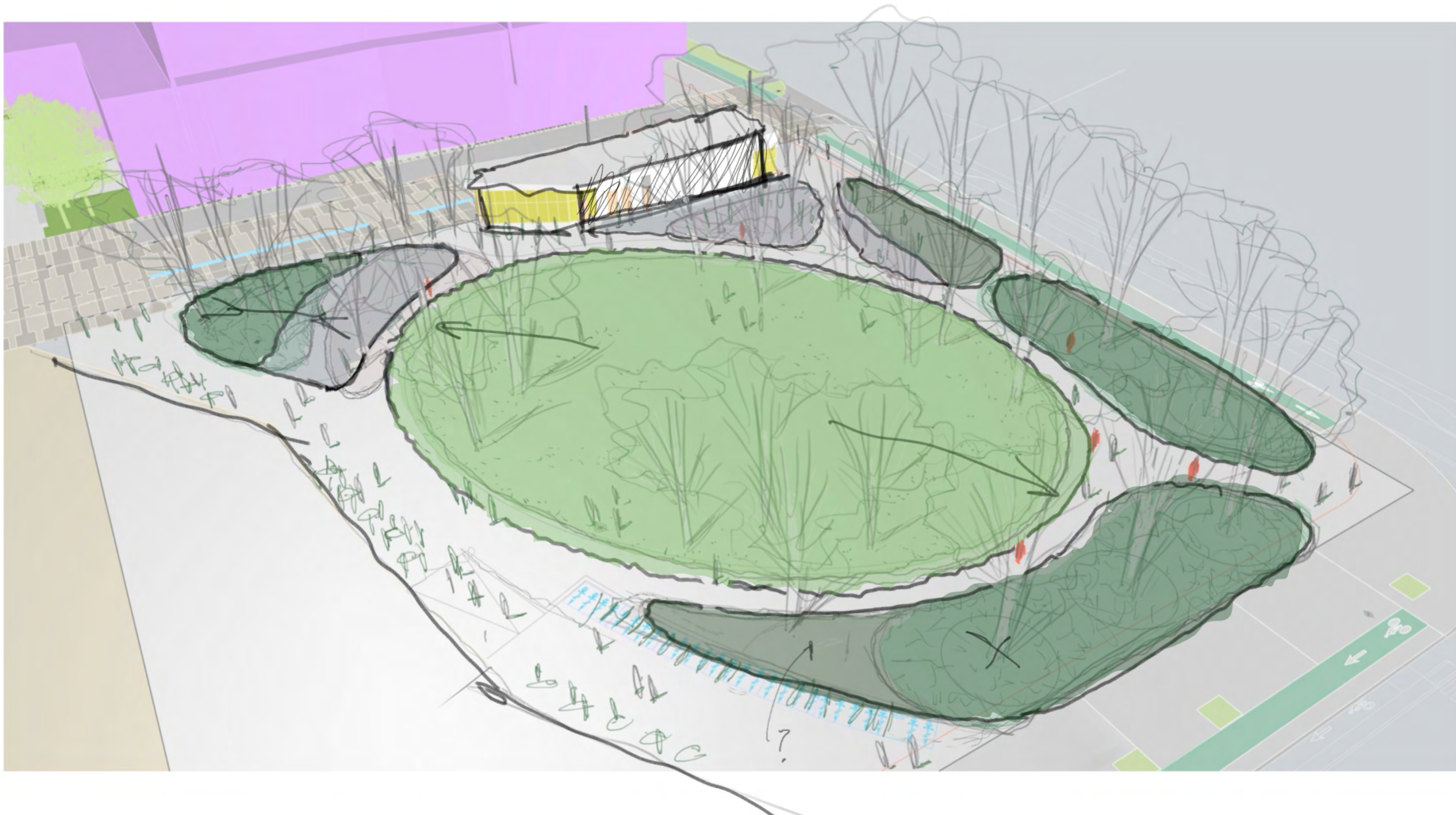
- + INCREASED GREEN SPACE APPROX. 20% SINCE SPECIAL PERMIT
- + INCREASED LAWN APPROX. 10% SINCE 9/26 PLANNING BOARD MEETING
- + REDUCED PAVILION FOOTPRINT APPROX. 10%
- + INCORPORATED GREEN ROOF ON PAVILION
- + INCORPORATED DEDICATED BUS LANE IN THIRD STREET AND ADJUSTED SIDEWALK AND BIKE LANE TO PRESERVE EXISTING STREET AND SITE TREES
- + ADOPTED AN ALTERNATE BROAD CANAL WAY DESIGN TO ALLOW TREES ON BOTH SIDES OF STREET
- + REFINED PAVING DESIGN OF BROAD CANAL WAY TO EMPHASIZE CONNECTION BETWEEN COMMUNITY CENTER PARK AND THIRD STREET PARK
- + RELOCATED BIKE RACKS TO IMPROVE CIRCULATION AND REDUCE NUMBER OF BOLLARDS ALONG BROAD CANAL WAY

LEGEND

-  BUILDING ENTRANCE
-  PRIMARY BUILDING ENTRANCE
-  EXISTING TREE
-  PROPOSED TREE





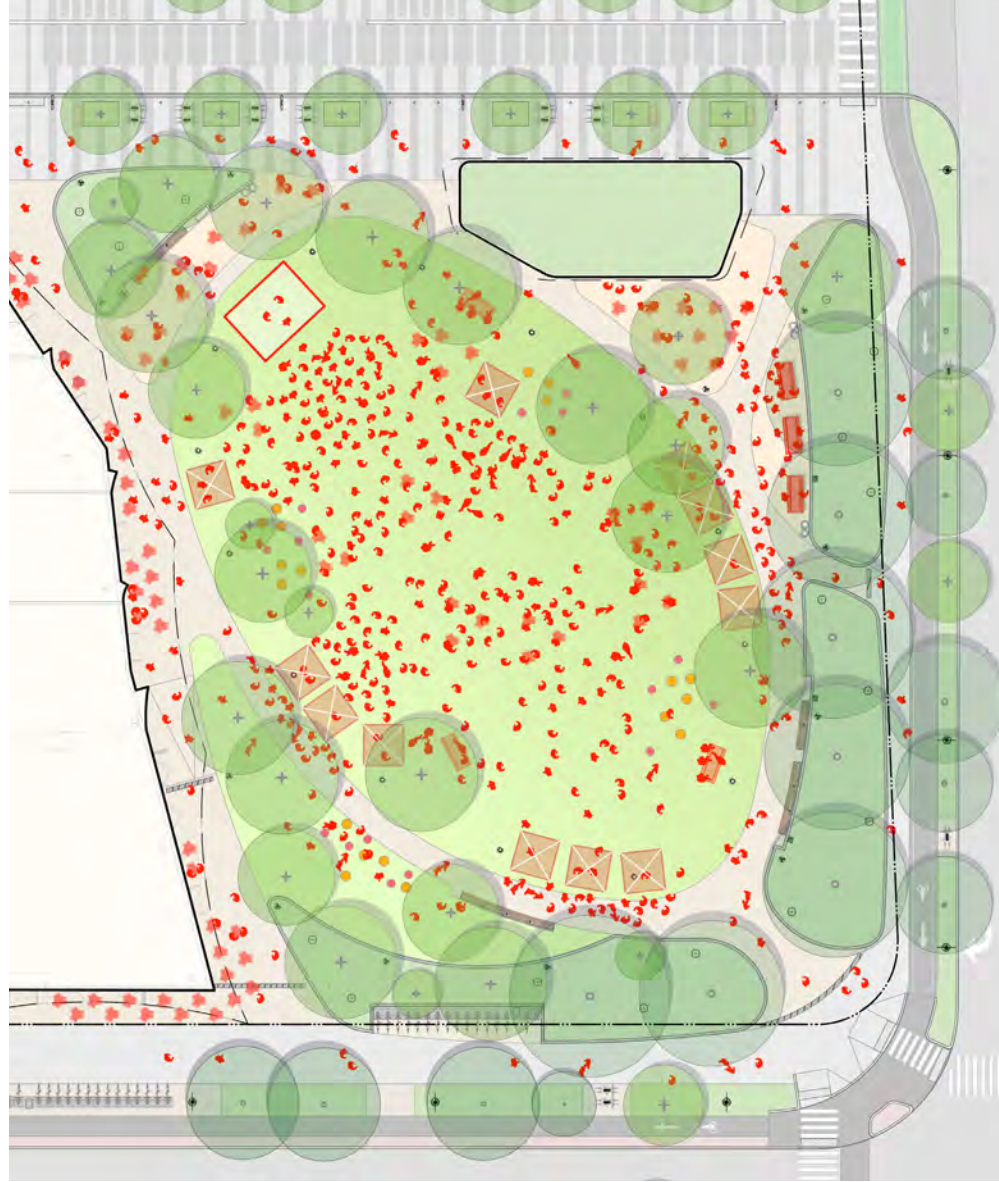






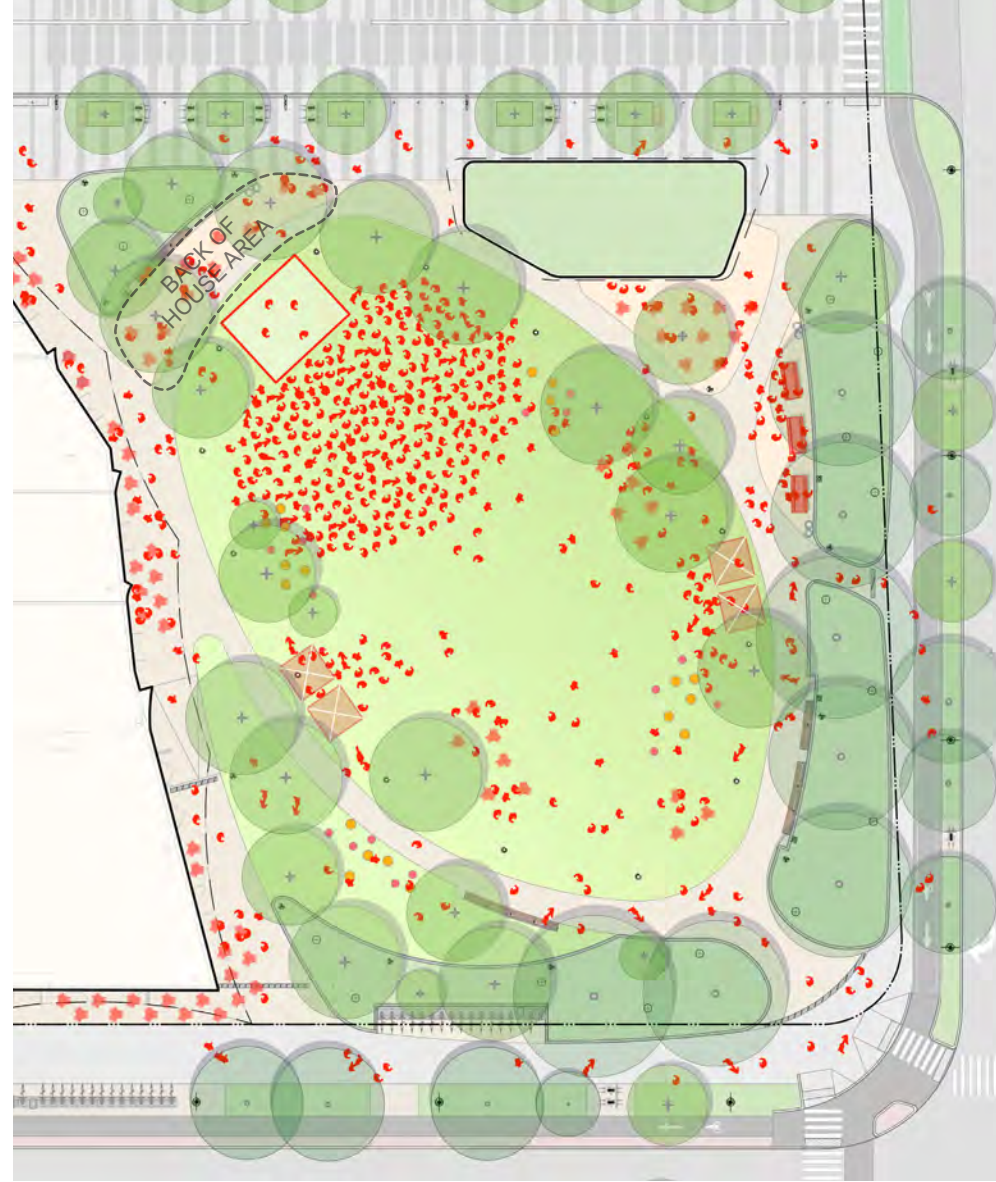






FESTIVAL

- 12+ VENDOR TENTS (10X10')
- 3 LONG PICNIC TABLES
- MOVABLE TABLES AND CHAIRS
- RESTROOMS IN C1
- *Graphic shows 500 people



CONCERT

- 4 VENDOR TENTS (10X10)
- 20X25' STAGE
- BACK OF HOUSE AREA BEHIND STAGE
- MOVABLE TABLES AND CHAIRS
- RESTROOMS IN C1
- *Graphic shows 500 people



MOVIE

- 2 VENDOR TENTS (10X10)
- 20' MOVIE SCREEN
- RESTROOMS IN C1
- *Graphic shows 200 people



R2

PAVILION

R1

BROAD CANAL WAY

THIRD STREET

C2

THORNLESS HONEYLOCUST
GLEDITSIA TRIACANTHOS F. INERMIS

SWAMP WHITE OAK
QUERCUS BICOLOR

BUILDING C1

AMERICAN ELM
ULMUS AMERICANA

SERVICEBERRY
AMELANCHIER CANADENSIS

TUPELO
NYSSA SYLVATICA

TULIP POPLAR
LIRIODENDRON TULIPIFERA

PAVILION

GREEN ROOF

SCARLET OAK
QUERCUS COCCINEA

GROUND PLANTING

LITTLELEAF LINDEN
TILIA CORDATA

BUR OAK
QUERCUS MACROCARPA

RED OAK
QUERCUS RUBRA

LAWN

EXISTING PIN OAK

EXISTING LITTLELEAF LINDEN

EASTERN REDBUD
CERCIS CANADENSIS

LITTLELEAF LINDEN
TILIA CORDATA

FIFTH STREET

BROADWAY

0 20 40ft



PAVING MATERIALS

- ① EXPOSED AGGREGATE CONCRETE

- ② BROOM FINISH CONCRETE

- ③ DECOMPOSED GRANITE

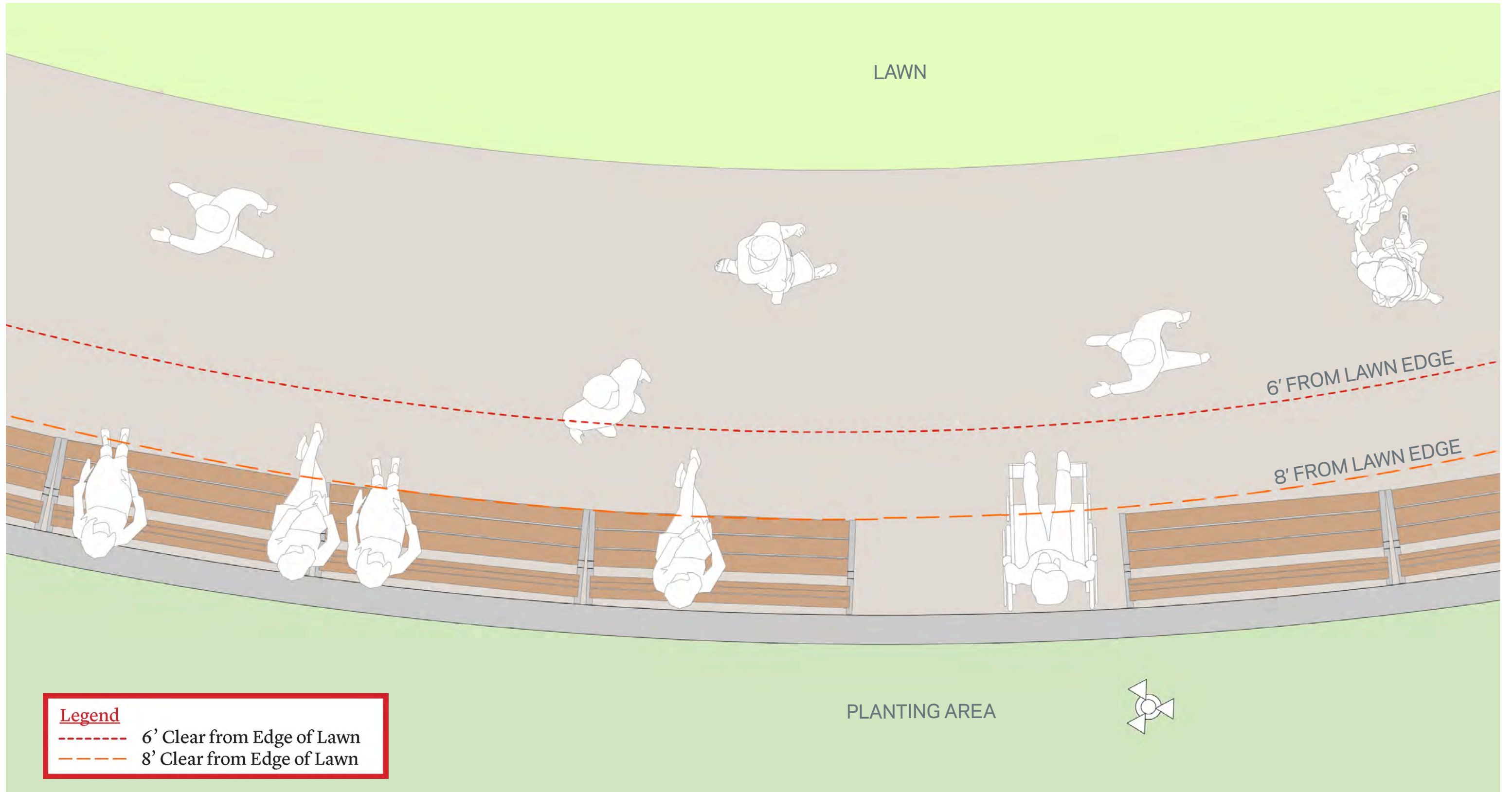
- ④ CONCRETE UNIT PAVERS

- ⑤ PERMEABLE PAVERS

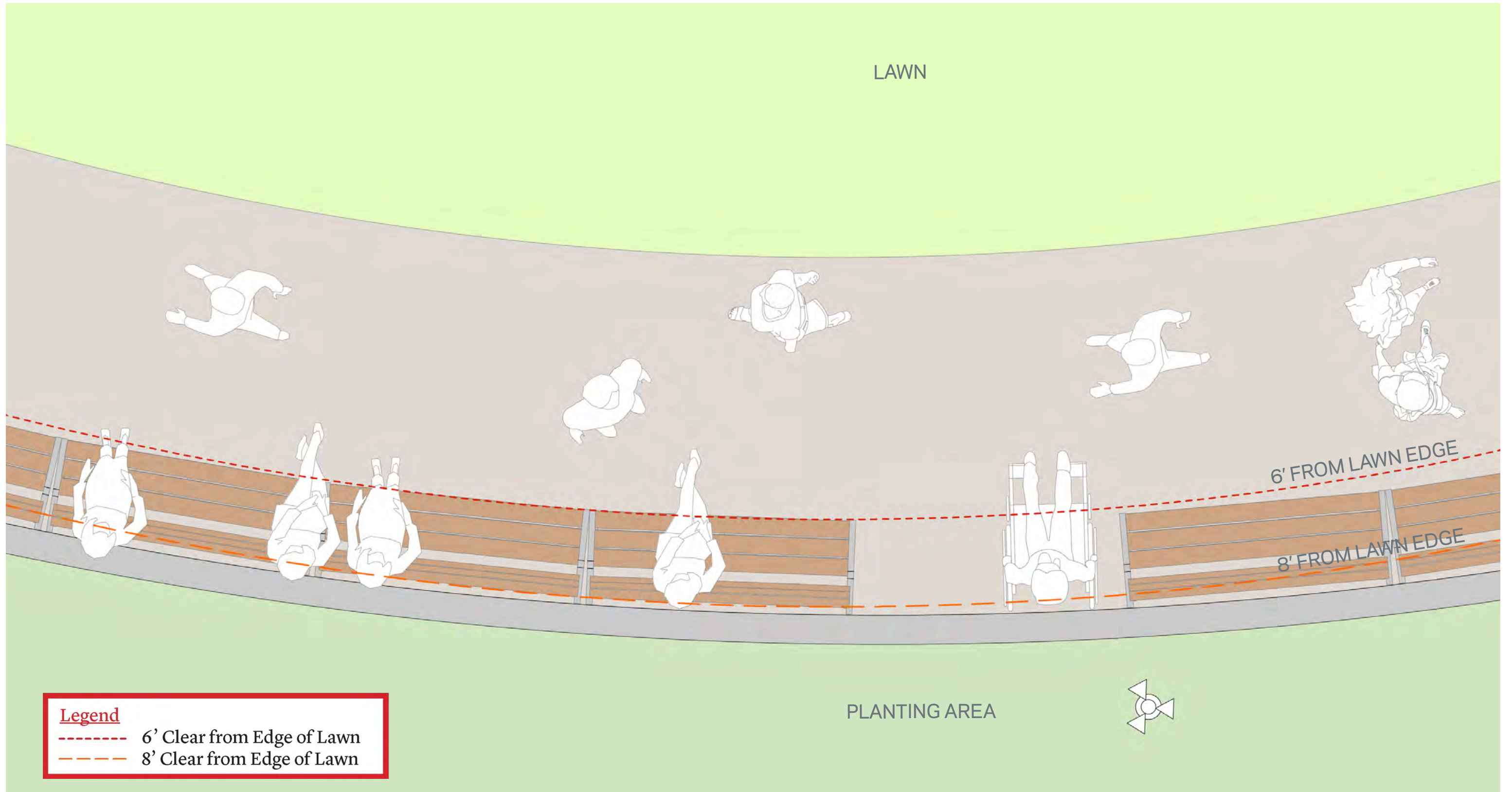
- ⑥ BRICK PAVING

- ⑦ ASPHALT (BIKE LANE)

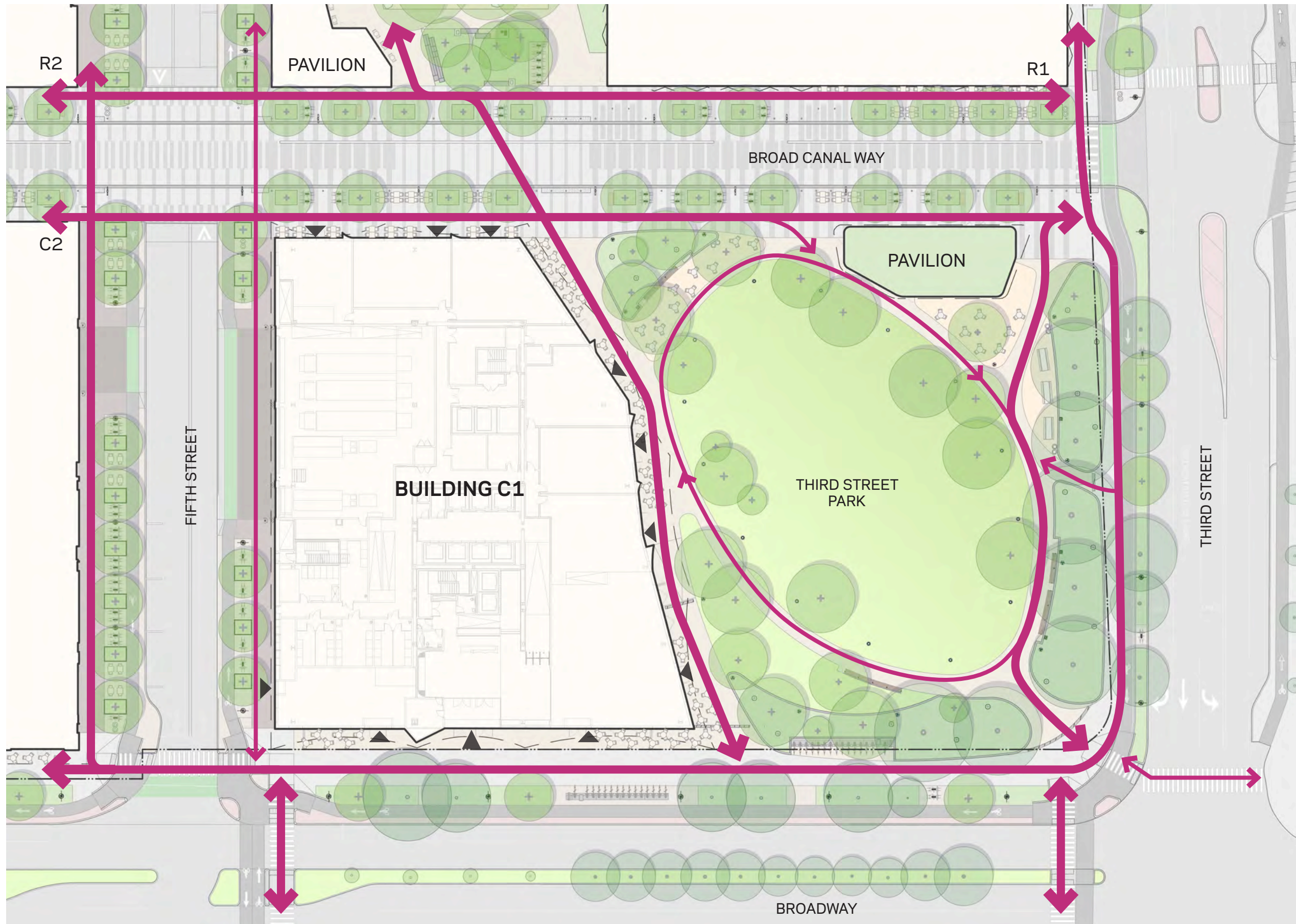


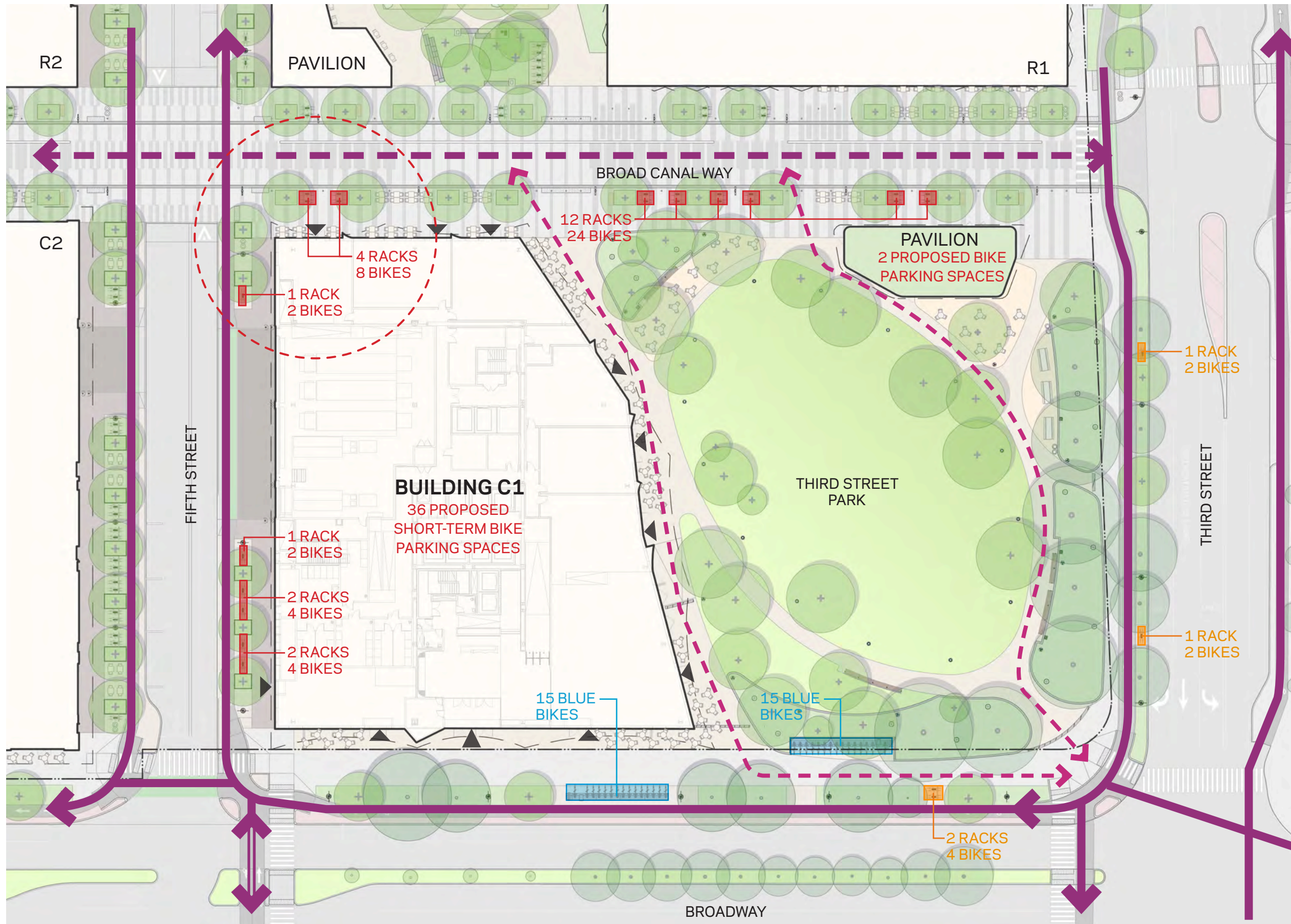
8' CLEAR PATHWAY DIAGRAM



6' CLEAR PATHWAY DIAGRAM







LEGEND

- ONE-WAY CYCLE TRACK
- TWO-WAY CYCLE TRACK
- SHARED USE CIRCULATION
- PEDESTRIAN / SLOW CYCLING ROUTE
- 50' RADIUS FROM BUILDING ENTRANCE
- SHORT-TERM BIKE PARKING
- SHORT-TERM BIKE PARKING IN CITY ROW
- BLUE BIKES

0 20 40ft

N

A detailed night rendering of a park entrance. The scene is illuminated by warm streetlights and building lights. In the foreground, a paved walkway curves through a landscaped area with large green plants and white flowers. People of various ages are walking and standing. In the middle ground, there's a grassy area with a red and white food cart, a large outdoor screen displaying a colorful scene, and a building with a sign that says "Gongoozler". The background features a modern building with large windows and balconies, partially obscured by tall trees. The overall atmosphere is vibrant and community-oriented.

Thank You