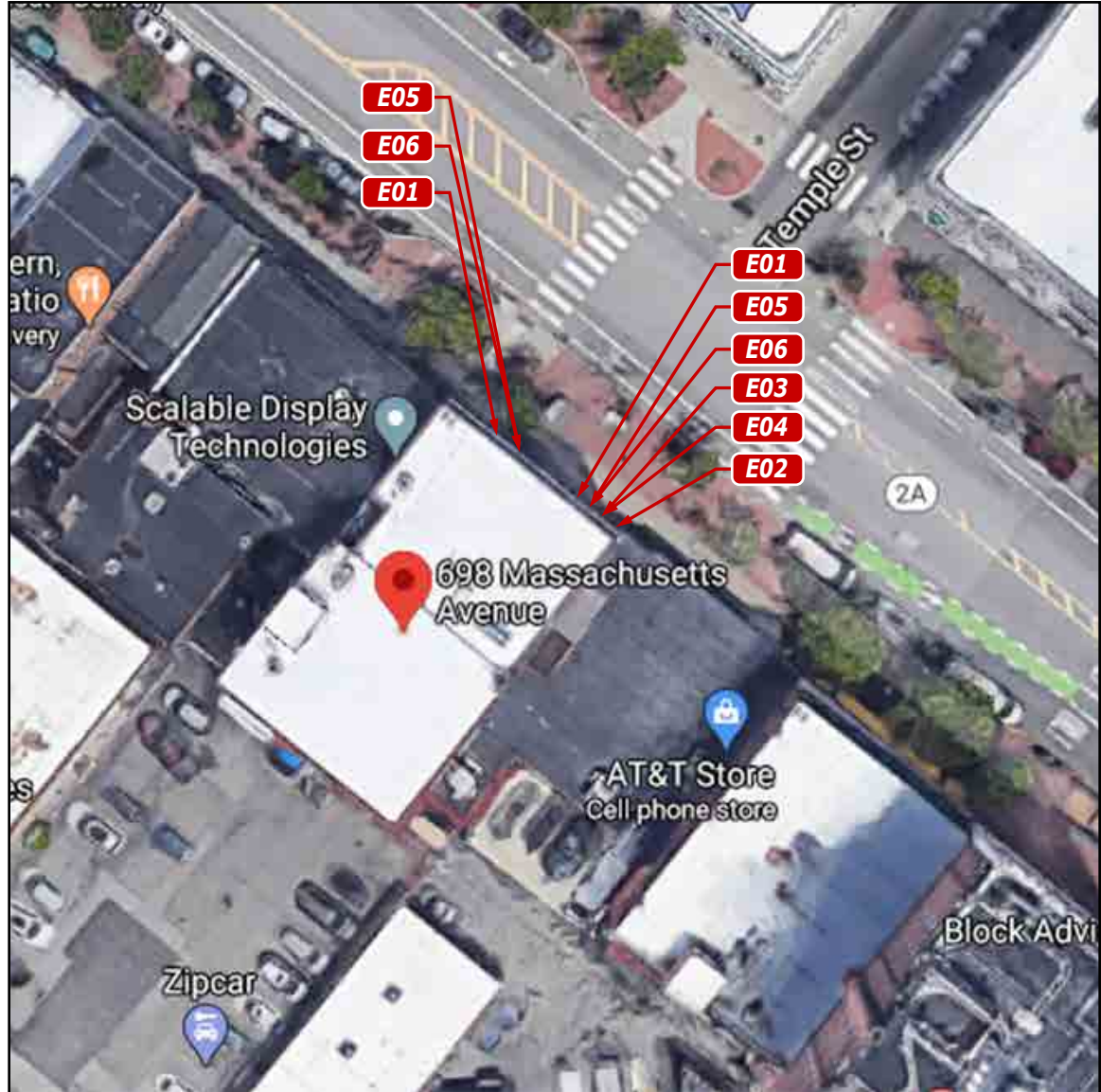


# SIGN INVENTORY

<b>SITE:</b>		5006700 - Central Square West
SIGN	PAGE	PROPOSED SIGN
E01	2	ALB-2
E02	2	BSE-1-3
E03	2	CTZ.VIN.CUST
E04	2	DHR-2
E05	2	GFPE-3
E06	2	GFPE-2




**PHILADELPHIASIGN**  
BRINGING THE WORLD'S BRANDS TO LIFE

TITLE	Citizens	DWG BY	RAS	DATE	07.22.20	DATE	08.11.20	REVISION	Revised as Noted.....	BY	ZAS	THIS IS AN ORIGINAL UNPUBLISHED DRAWING CREATED BY P.S.C.O. IT IS SUBMITTED FOR YOUR PERSONAL USE IN CONJUNCTION WITH A PROJECT BEING PLANNED FOR YOU BY P.S.C.O. IT IS NOT TO BE SHOWN TO ANYONE OUTSIDE YOUR ORGANIZATION NOR IS IT TO BE USED, COPIED, REPRODUCED, OR EXHIBITED IN ANY FASHION.
ADDRESS	5006700 - Central Square West 698 Massachusetts Ave. Cambridge, MA 02139		DWG NUM	A35090								
			SHEET	1								

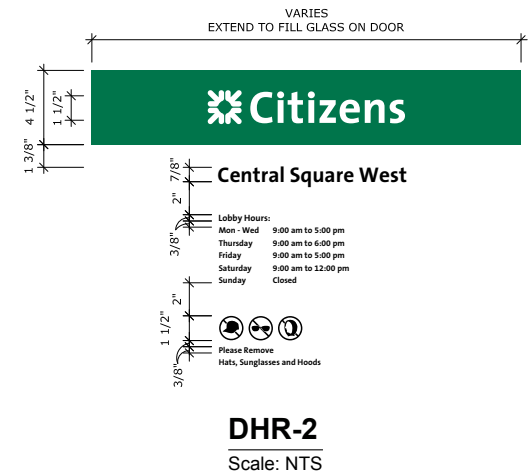
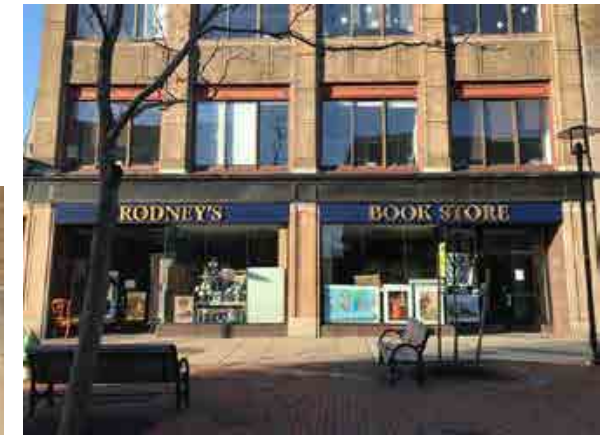
- E01 ALB-2 Green Cooley Awning with Ecru Light Bar - 3' 7-3/4" h (Qty 2)
- NOTE:** Awnings must remain as is due to support requirements on bottom.
- E02 BSE-1-3 Double Faced Illuminated Aluminum Face with Routed Push Thru Letters Blade Sign - 3' 2" oah x 3' 9-1/2" oal (12 SF)
- NOTE:** Sign must be mounted no less than 8' 0" from grade and needs to be verified in field.
- E03 CTZ.VIN.CUST 6"h 1st Surface White Number Vinyl (Qty 2)
- E04 DHR-2 1st Surface Double Door Vinyl
- E05 GFPE-3 1st Surface Angled Dots Vinyl With Branding at 60% Opacity (Qty 4)
- E06 GFPE-2 1st Surface Angled Dots Vinyl Without Branding at 60% Opacity (Qty 5)

Proposed



**DIMENSIONS TO BE FIELD VERIFIED**

Existing



<b>TITLE</b> Citizens	<b>DWG BY</b> RAS	<b>DATE</b> 07.22.20	<b>DATE</b> 08.11.20	<b>REVISION</b> Revised as Noted.....	<b>BY</b> ZAS
<b>ADDRESS</b> 5006700 - Central Square West 698 Massachusetts Ave. Cambridge, MA 02139		<b>DWG NUM</b> A35090			
		<b>SHEET</b> 2			

THIS IS AN ORIGINAL UNPUBLISHED DRAWING CREATED BY P.S.C.O. IT IS SUBMITTED FOR YOUR PERSONAL USE IN CONJUNCTION WITH A PROJECT BEING PLANNED FOR YOU BY P.S.C.O. IT IS NOT TO BE SHOWN TO ANYONE OUTSIDE YOUR ORGANIZATION NOR IS IT TO BE USED, COPIED, REPRODUCED, OR EXHIBITED IN ANY FASHION.

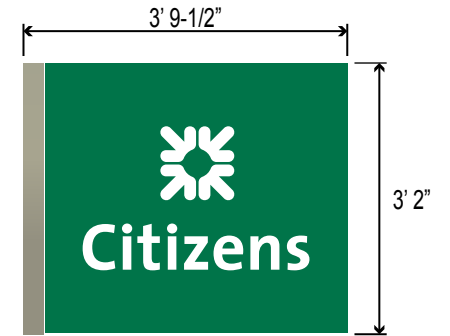
- E01 ALB-2 Green Cooley Awning with Ecru Light Bar - 3' 7-3/4"h (Qty 2)
- NOTE:** Awnings must remain as is due to support requirements on bottom.
- E02 BSE-1-3 Double Faced Illuminated Aluminum Face with Routed Push Thru Letters Blade Sign - 3' 2"oah x 3' 9-1/2"oal (12 SF)
- NOTE:** Sign must be mounted no less than 8' 0" from grade and needs to be verified in field.
- E03 CTZ.VIN.CUST 6"h 1st Surface White Number Vinyl (Qty 2)
- E04 DHR-2 1st Surface Double Door Vinyl
- E05 GFPE-3 1st Surface Angled Dots Vinyl With Branding at 60% Opacity (Qty 4)
- E06 GFPE-2 1st Surface Angled Dots Vinyl Without Branding at 60% Opacity (Qty 5)

Proposed




**DIMENSIONS TO BE FIELD VERIFIED**

Existing



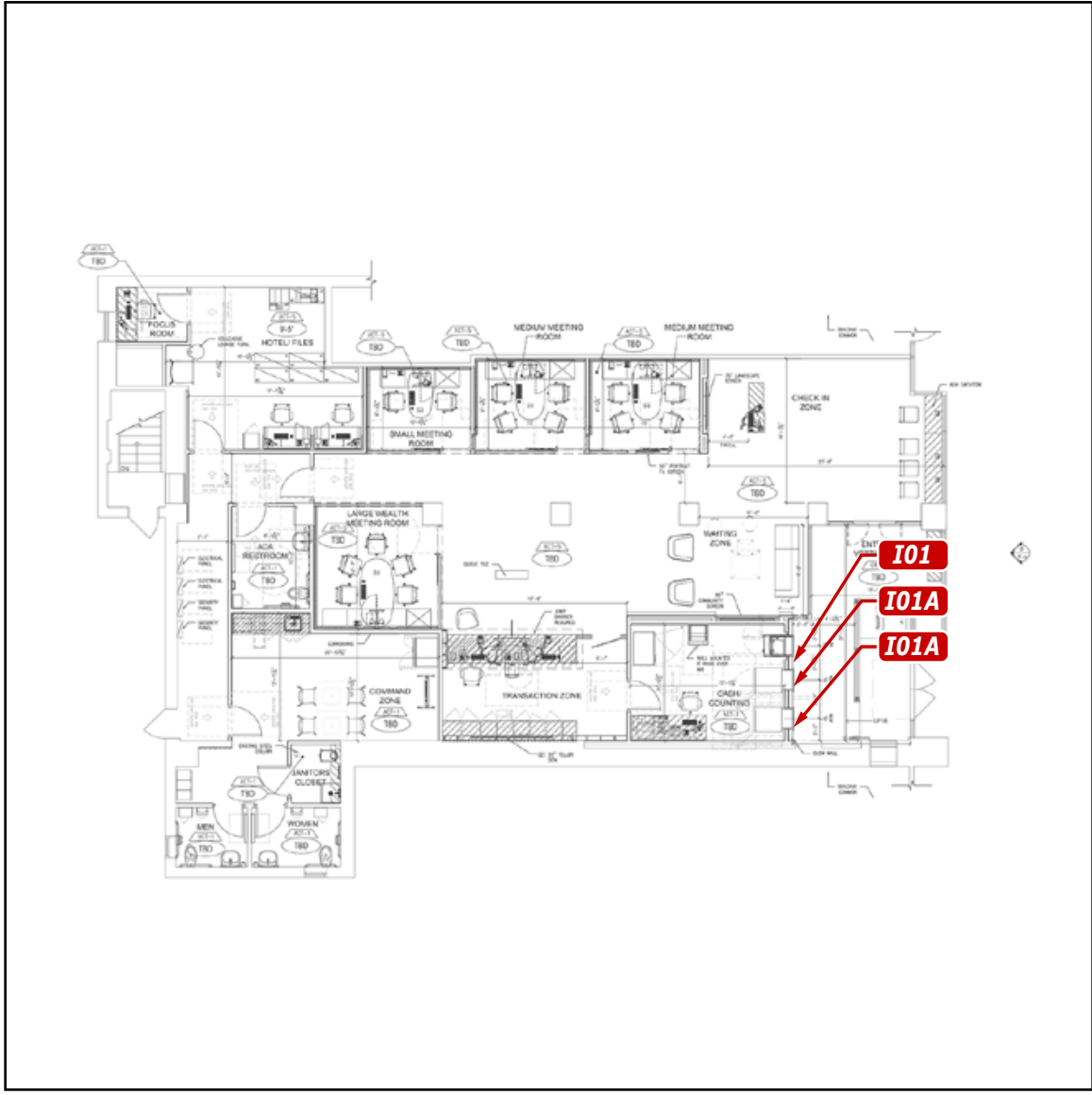
**BSE-1-3**

Scale: NTS

 <b>PHILADELPHIASIGN</b> BRINGING THE WORLD'S BRANDS TO LIFE	TITLE	Citizens	DWG BY	RAS	DATE	07.22.20	DATE	08.11.20	REVISION	Revised as Noted.....	BY	ZAS	THIS IS AN ORIGINAL UNPUBLISHED DRAWING CREATED BY P.S.C.O. IT IS SUBMITTED FOR YOUR PERSONAL USE IN CONJUNCTION WITH A PROJECT BEING PLANNED FOR YOU BY P.S.C.O. IT IS NOT TO BE SHOWN TO ANYONE OUTSIDE YOUR ORGANIZATION NOR IS IT TO BE USED, COPIED, REPRODUCED, OR EXHIBITED IN ANY FASHION.
	ADDRESS	5006700 - Central Square West 698 Massachusetts Ave. Cambridge, MA 02139		DWG NUM	A35090								
				SHEET	3								

# SIGN INVENTORY

<b>SITE:</b>		5006700 - Central Square West
SIGN	PAGE	PROPOSED SIGN
I01	5	ATM-DND-CUST
I02	5	ATM-NGP-1




**PHILADELPHIASIGN**  
BRINGING THE WORLD'S BRANDS TO LIFE

TITLE	Citizens	DWG BY	RAS	DATE	07.22.20
ADDRESS	5006700 - Central Square West 698 Massachusetts Ave. Cambridge, MA 02139		DWG NUM	A35090	
			SHEET	4	

DATE	08.11.20	REVISION	Revised as Noted.....	BY	ZAS
------	----------	----------	-----------------------	----	-----

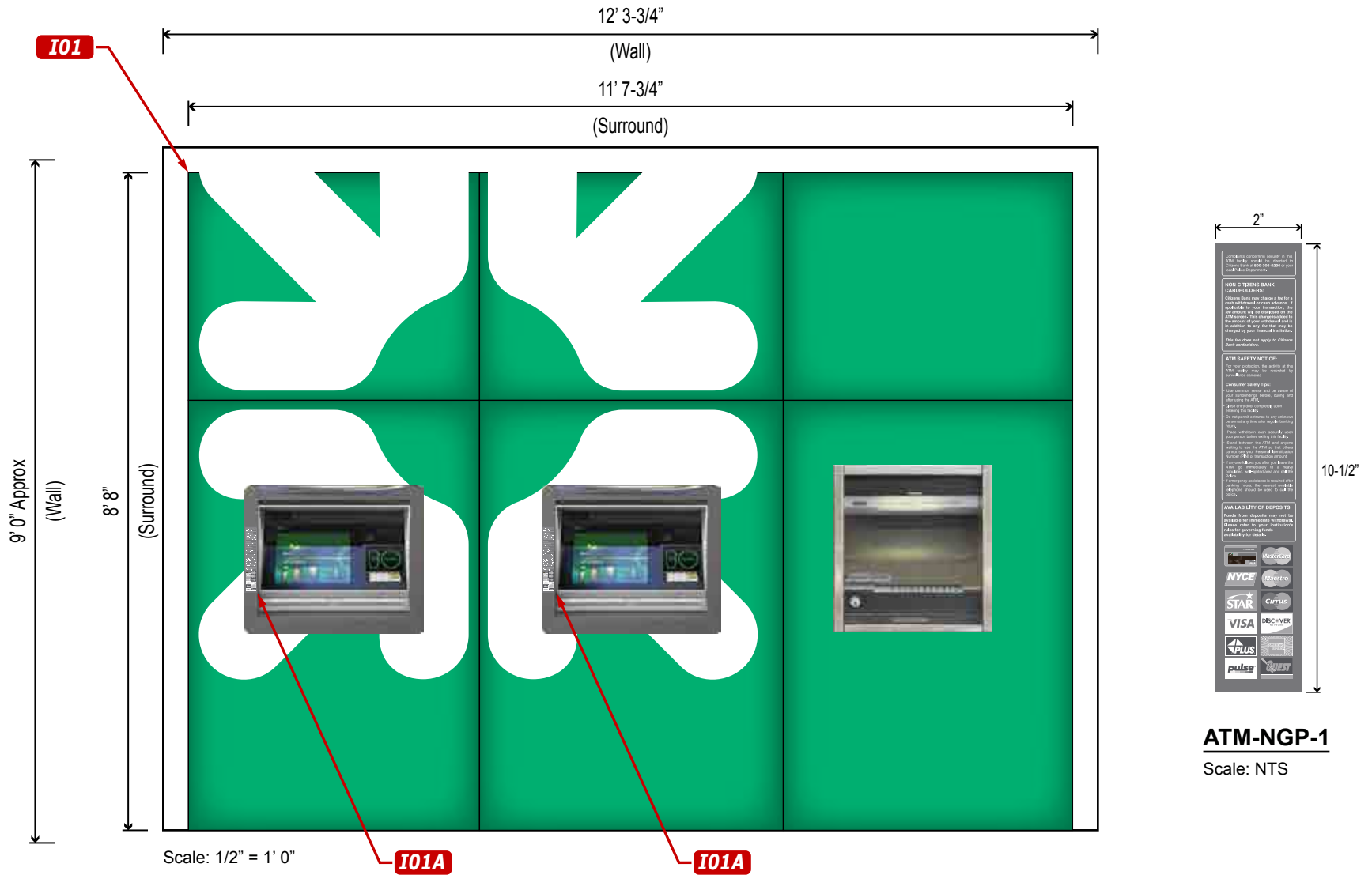
THIS IS AN ORIGINAL UNPUBLISHED DRAWING CREATED BY P.S.C.O. IT IS SUBMITTED FOR YOUR PERSONAL USE IN CONJUNCTION WITH A PROJECT BEING PLANNED FOR YOU BY P.S.C.O. IT IS NOT TO BE SHOWN TO ANYONE OUTSIDE YOUR ORGANIZATION NOR IS IT TO BE USED, COPIED, REPRODUCED, OR EXHIBITED IN ANY FASHION.

I01 ATM-DND-CUST Custom Illuminated ATM Surround with Night Deposit - 8' 8" h x 11' 7-3/4" (101 SF)


NOTE: 4" gap is required for installation clearance. ATM Model is NCR 6684.

I01A ATM-NGP-1 Vertical ATM Network Panel - 10-1/2" oah x 2" oal (Qty 2)

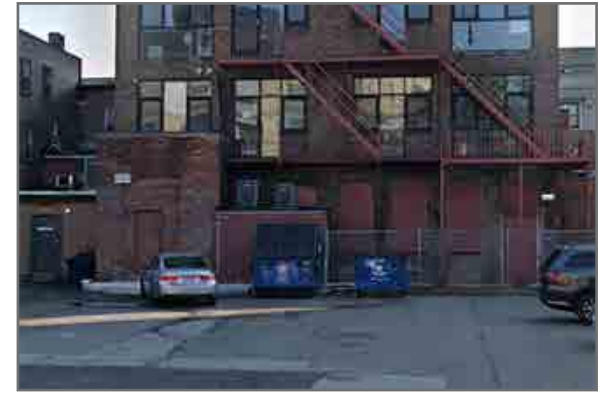
NOTE: Artwork is a placeholder. New network card art to be supplied by Citizens.



**ATM-NGP-1**  
Scale: NTS

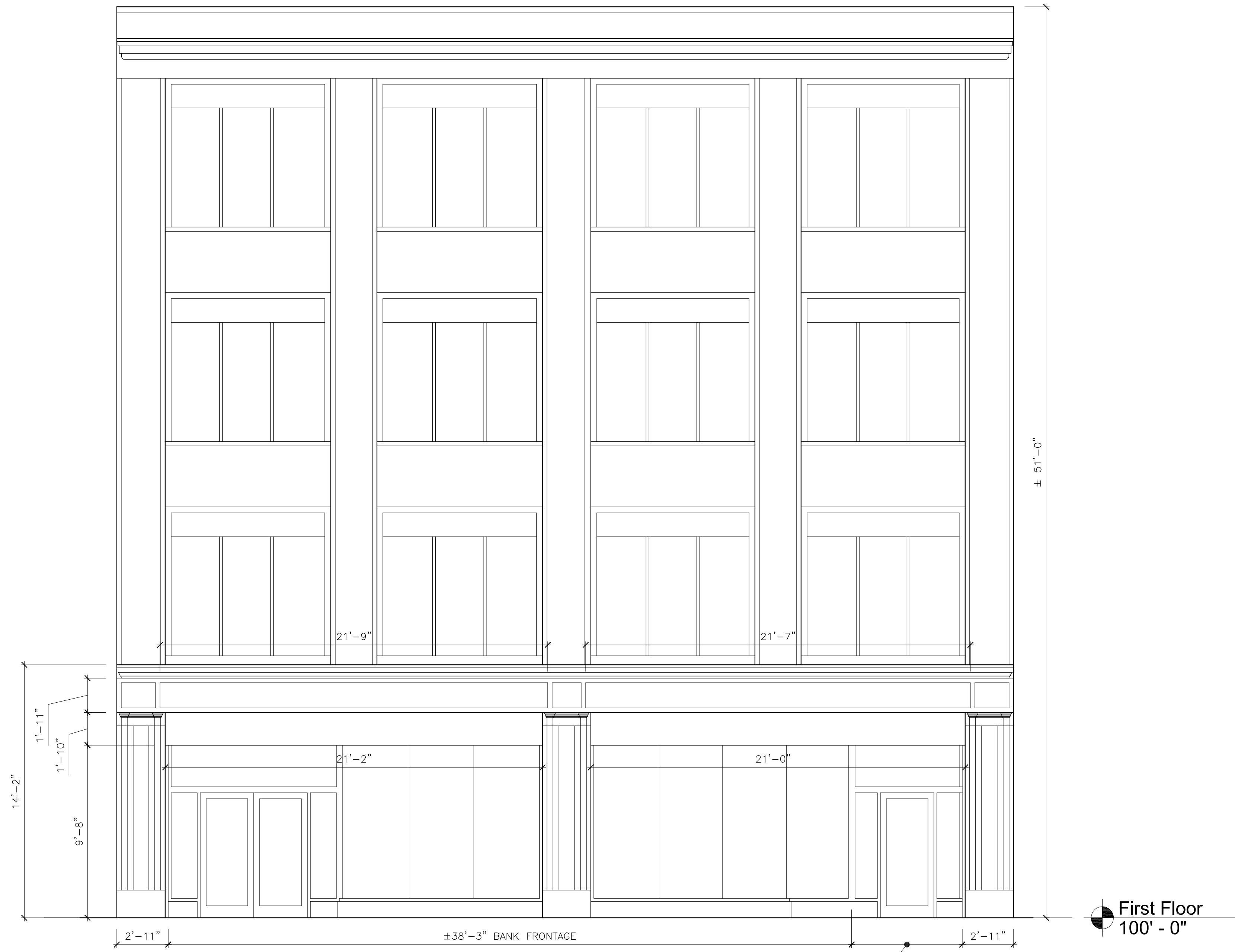
 <b>PHILADELPHIASIGN</b> BRINGING THE WORLD'S BRANDS TO LIFE	TITLE	Citizens	DWG BY	RAS	DATE	07.22.20	DATE REVISION 08.11.20 Revised as Noted..... ZAS	BY ZAS	THIS IS AN ORIGINAL UNPUBLISHED DRAWING CREATED BY P.S.C.O. IT IS SUBMITTED FOR YOUR PERSONAL USE IN CONJUNCTION WITH A PROJECT BEING PLANNED FOR YOU BY P.S.C.O. IT IS NOT TO BE SHOWN TO ANYONE OUTSIDE YOUR ORGANIZATION NOR IS IT TO BE USED, COPIED, REPRODUCED, OR EXHIBITED IN ANY FASHION.
	ADDRESS	5006700 - Central Square West 698 Massachusetts Ave. Cambridge, MA 02139		DWG NUM	A35090				
		SHEET	5						

# SURROUNDING PHOTOS




**PHILADELPHIASIGN**  
BRINGING THE WORLD'S BRANDS TO LIFE

TITLE	Citizens	DWG BY	RAS	DATE	07.22.20	DATE	08.11.20	REVISION	Revised as Noted.....	BY	ZAS	THIS IS AN ORIGINAL UNPUBLISHED DRAWING CREATED BY P.S.C.O. IT IS SUBMITTED FOR YOUR PERSONAL USE IN CONJUNCTION WITH A PROJECT BEING PLANNED FOR YOU BY P.S.C.O. IT IS NOT TO BE SHOWN TO ANYONE OUTSIDE YOUR ORGANIZATION NOR IS IT TO BE USED, COPIED, REPRODUCED, OR EXHIBITED IN ANY FASHION.
ADDRESS	5006700 - Central Square West 698 Massachusetts Ave. Cambridge, MA 02139		DWG NUM	A35090								
			SHEET	6								



**1** Front Elevation  
 Scale: 1/4" = 1'-0"

First Floor  
 100' - 0"

±6'-2" 700 MASS.  
 AVE. ENTRY

±38'-3" BANK FRONTAGE

± 51'-0"

21'-9"

21'-7"

21'-2"

21'-0"

14'-2"

1'-11"

1'-10"

9'-8"

2'-11"

2'-11"