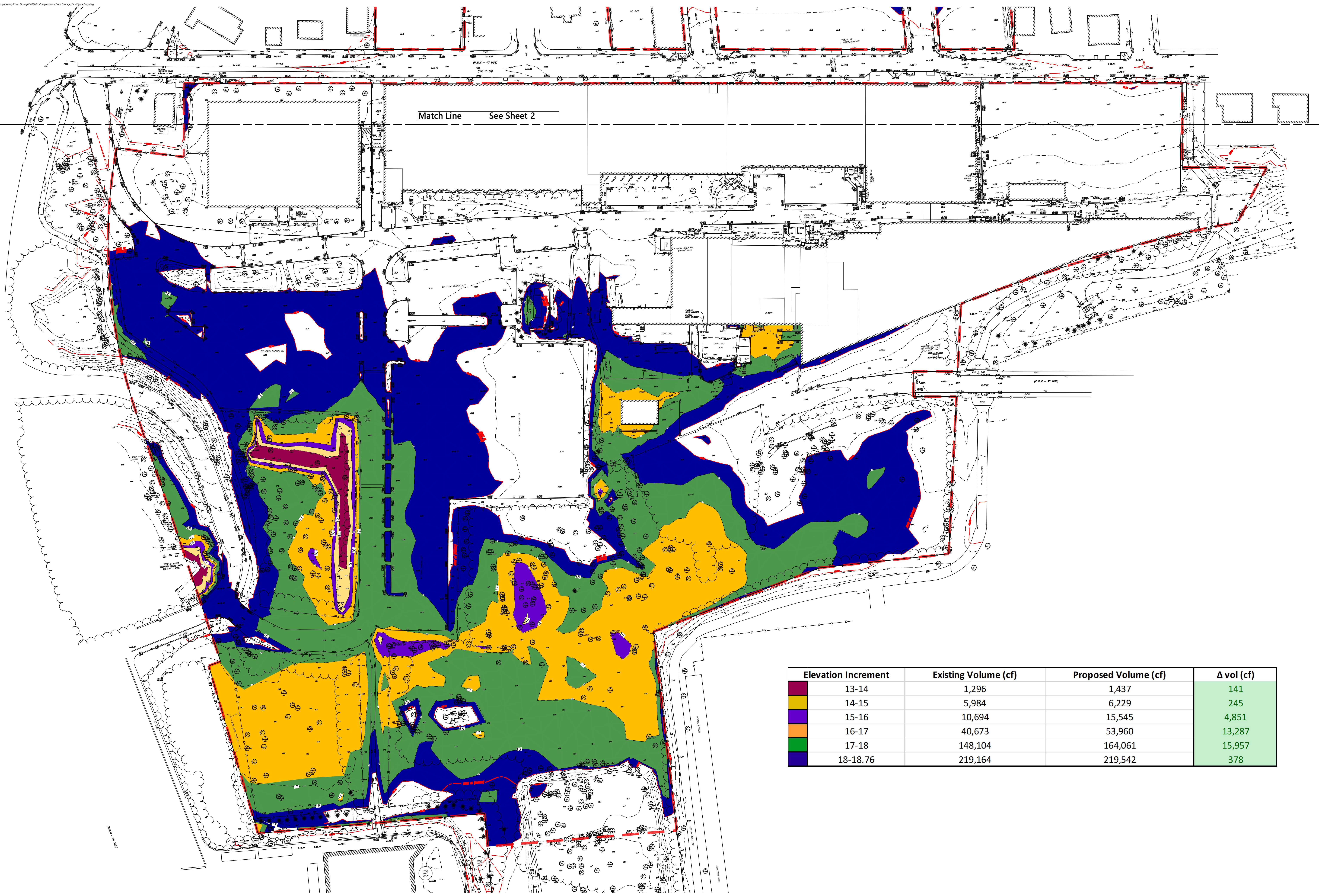


APPENDIX H: FLOOD STORAGE

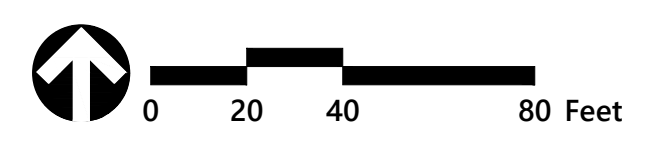


Elevation Increment	Existing Volume (cf)	Proposed Volume (cf)	Δ vol (cf)
13-14	1,296	1,437	141
14-15	5,984	6,229	245
15-16	10,694	15,545	4,851
16-17	40,673	53,960	13,287
17-18	148,104	164,061	15,957
18-18.76	219,164	219,542	378

Compensatory Flood Storage

Existing Conditions Sheet 1

Alewife Park



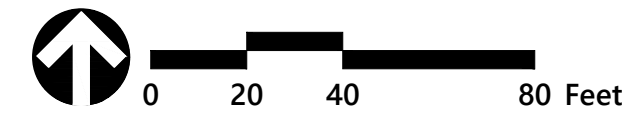
Elevation Increment	Existing Volume (cf)	Proposed Volume (cf)	Δ vol (cf)
13-14	1,296	1,437	141
14-15	5,984	6,229	245
15-16	10,694	15,545	4,851
16-17	40,673	53,960	13,287
17-18	148,104	164,061	15,957
18-18.76	219,164	219,542	378



Compensatory Flood Storage

Existing Conditions Sheet 2

Alewife Park



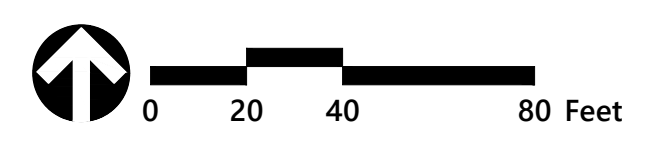


Elevation Increment	Existing Volume (cf)	Proposed Volume (cf)	Δ vol (cf)
13-14	1,296	1,437	141
14-15	5,984	6,229	245
15-16	10,694	15,545	4,851
16-17	40,673	53,960	13,287
17-18	148,104	164,061	15,957
18-18.76	219,164	219,542	378

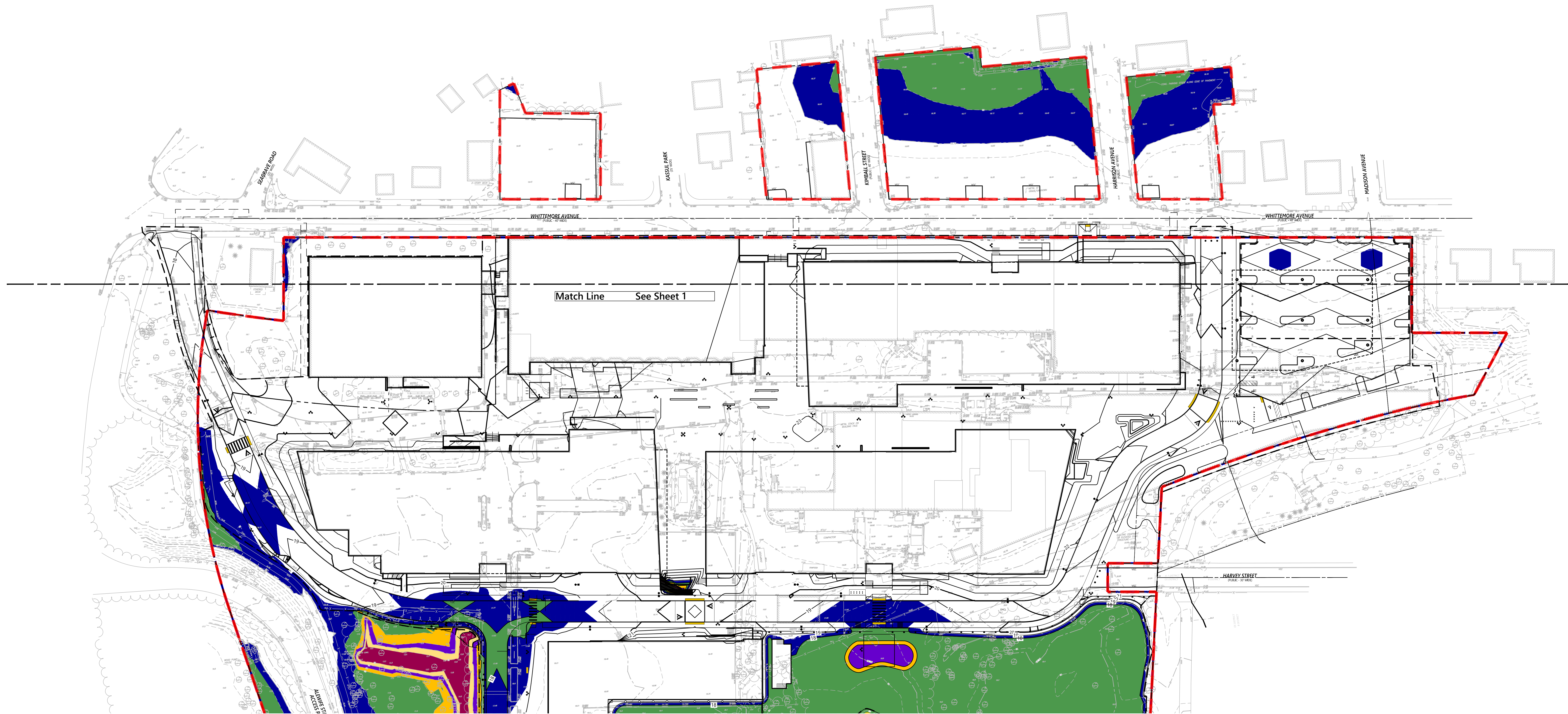
Compensatory Flood Storage

Proposed Conditions - Sheet 1

Alewife Park



Elevation Increment	Existing Volume (cf)	Proposed Volume (cf)	Δ vol (cf)
13-14	1,296	1,437	141
14-15	5,984	6,229	245
15-16	10,694	15,545	4,851
16-17	40,673	53,960	13,287
17-18	148,104	164,061	15,957
18-18.76	219,164	219,542	378



Compensatory Flood Storage

Proposed Conditions

Alewife Park - Sheet 2

Source: VHB
 Prepared for:
 Date: September 3, 2021



APPENDIX I: WHITTEMORE LOTS

Surface Area Being Collected per Lot (sf)

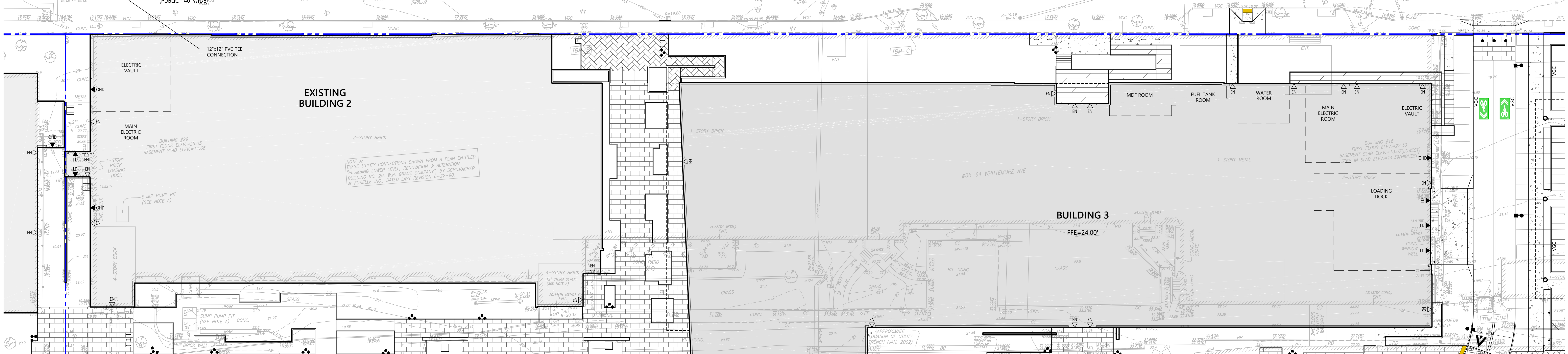
115 Whittemore	6,600
91-99 Whittemore	9,700
73 Whittemore	29,400
53-59 Whittemore	8,300

Pervious Area Increase per Lot (sf)

115 Whittemore	365
91-99 Whittemore	1,190
73 Whittemore	1,690
53-59 Whittemore	570
Total	±3,825

Legend

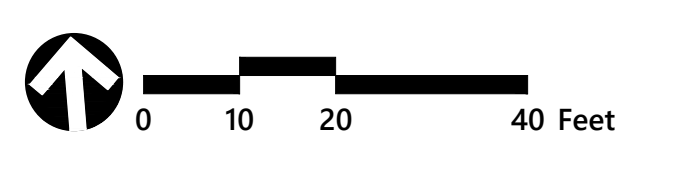
- LOT GRADED TO INLET
- PROPERTY LINE
- FEMA FLOODPLAIN EL. 18.76



North Parking Lots | Drainage Improvements

Proposed Conditions

Alewife Park | Cambridge, MA



APPENDIX J: COMMUNITY SURVEY

JERRY'S POND LISTENING SESSION | JAN 7, 2021



- Better way to cross Rindge Avenue
- Storyboard Sign about Jerry's Pond
- Safety for children
- Safety for pets
- Walking paths
- A raised boardwalk
- Wheelchair access
- Wildlife signage (great blue herons, turtles, hawks, geese, swan, ducks)
- Raised Viewing structure
- Wood Duck Nesting Box
- See heron nesting from a safe for herons distance
- Community Garden space
- Wildflowers
- Trees with identification tags or free-standing signs
- A place to take photos, views through a frame
- Picnic tables
- Places to sit with friends.
- Lighting for a festive and safer feeling
- Winter skating on the pond
- 4 Seasons Hut, light food, bathroom, skate & recreational equipment rental,
- A place we can feel proud of. A place to spend time in.
- A complete attractive natural walk around the pond
- "A place where people can go and safely social distance, because we do want to reduce the spread."
- A place for families with children
- Concerns expressed about the presence of toxic substances.
- "Get energized by nature"
- Wildlife restoration, "return of wildlife"
- "It would be great to have both indoor and outdoor facilities that allow for farmers' markets, art & music, and public gatherings."
- "Community input and control for what the space becomes and how it's used."
- Educational programs, tours and workshops

36-64 WHITTEMORE AVE.
JERRY'S POND LISTENING SESSION