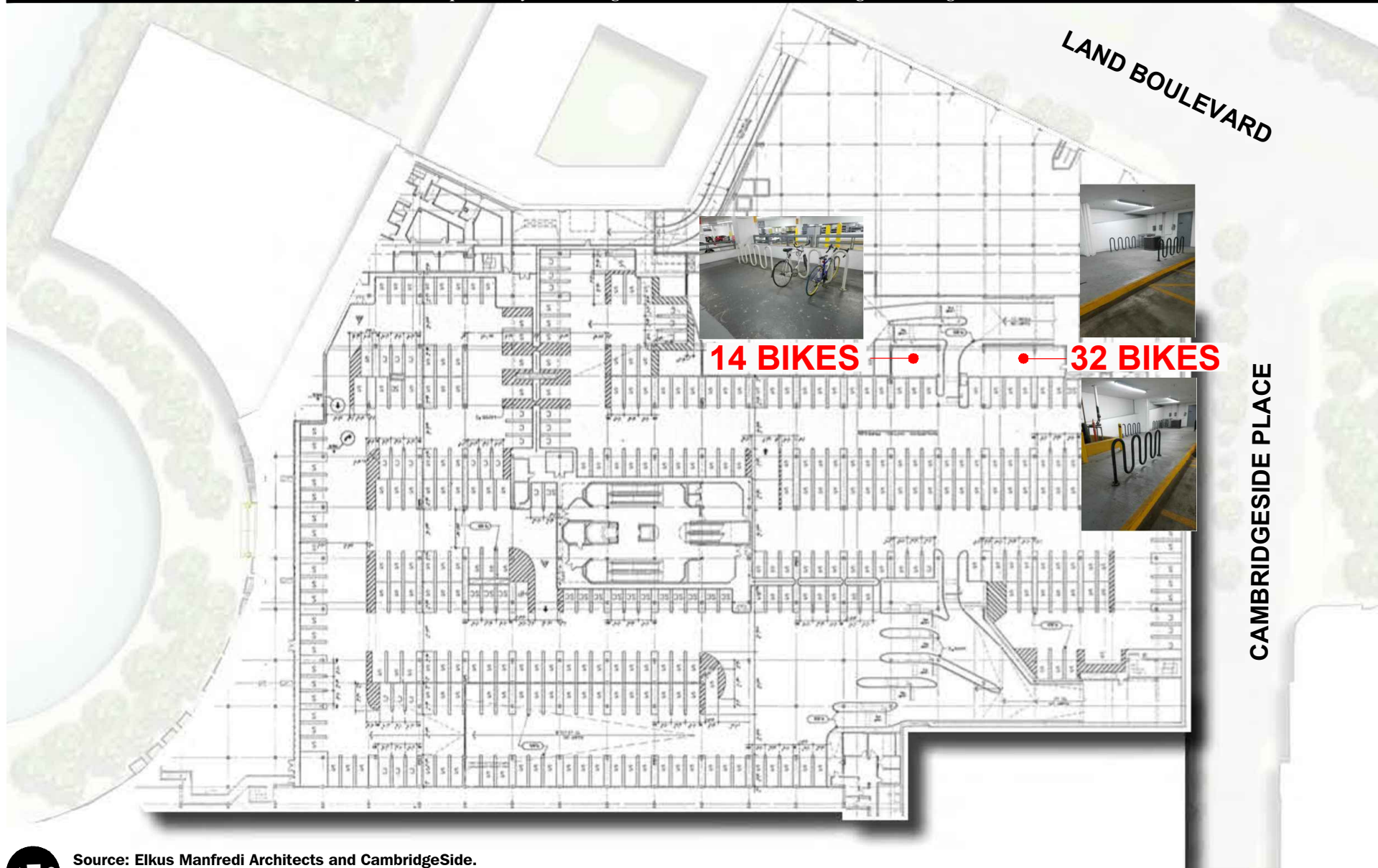


Figure 1.c.13

Existing Short-Term
Bicycle Parking Locations



Source: Elkus Manfredi Architects and CambridgeSide.

0 85 170 Scale in Feet

VAI Vanasse & Associates, Inc.
Transportation Engineers & Planners

Figure 1.c.14

Existing Long-Term
Bicycle Parking

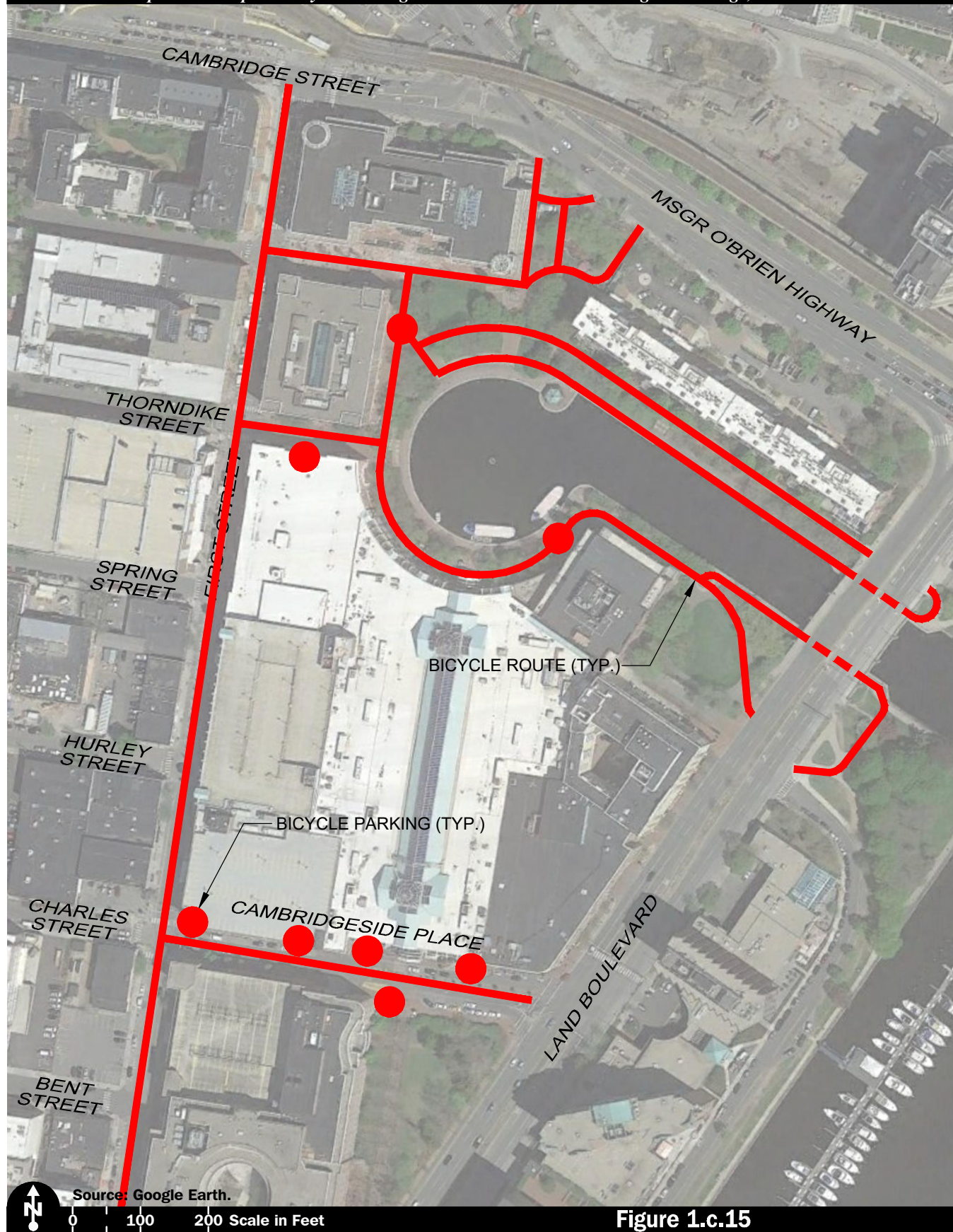


Figure 1.c.15

Bicycle Parking and Route
Access Map

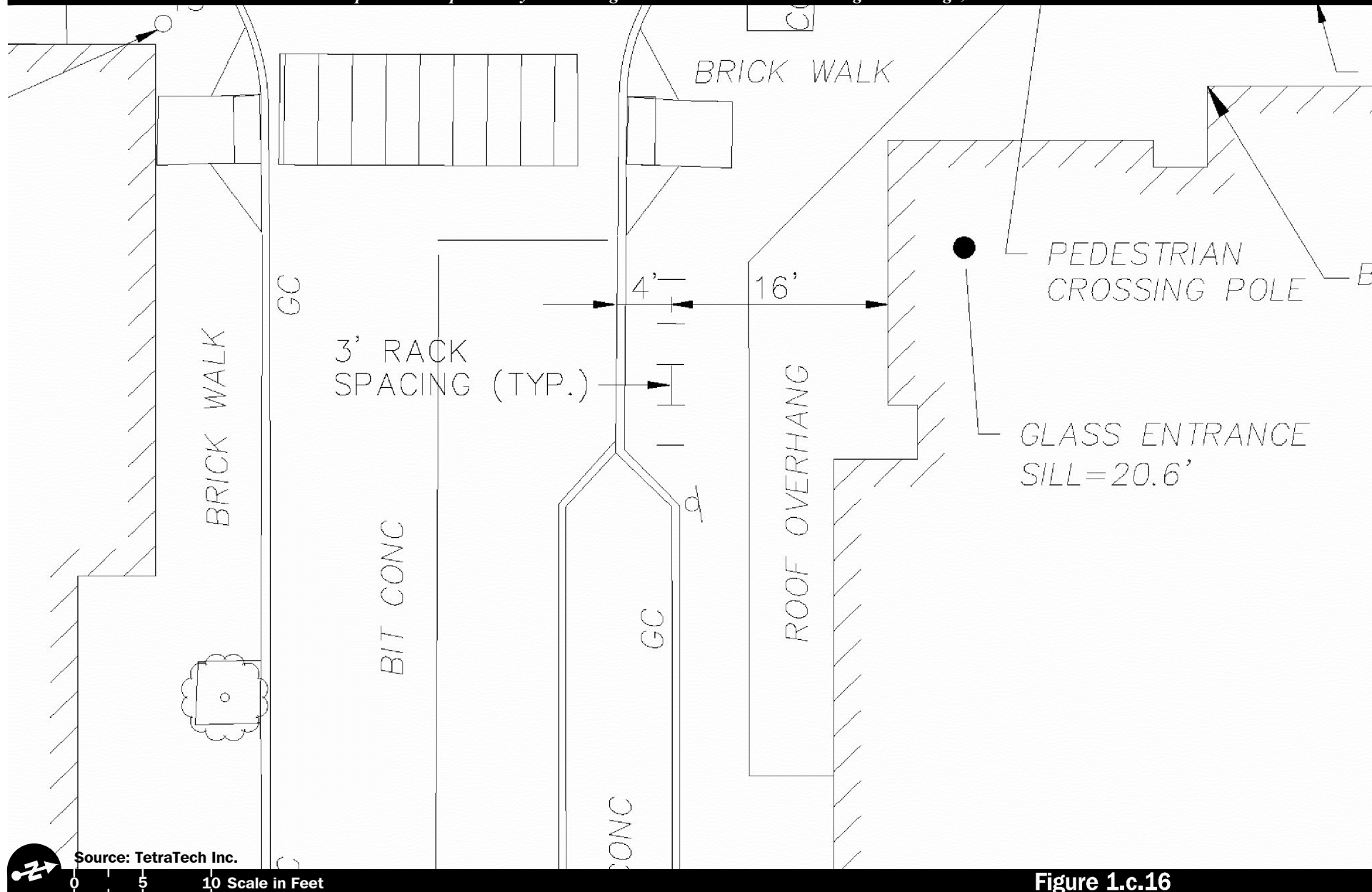
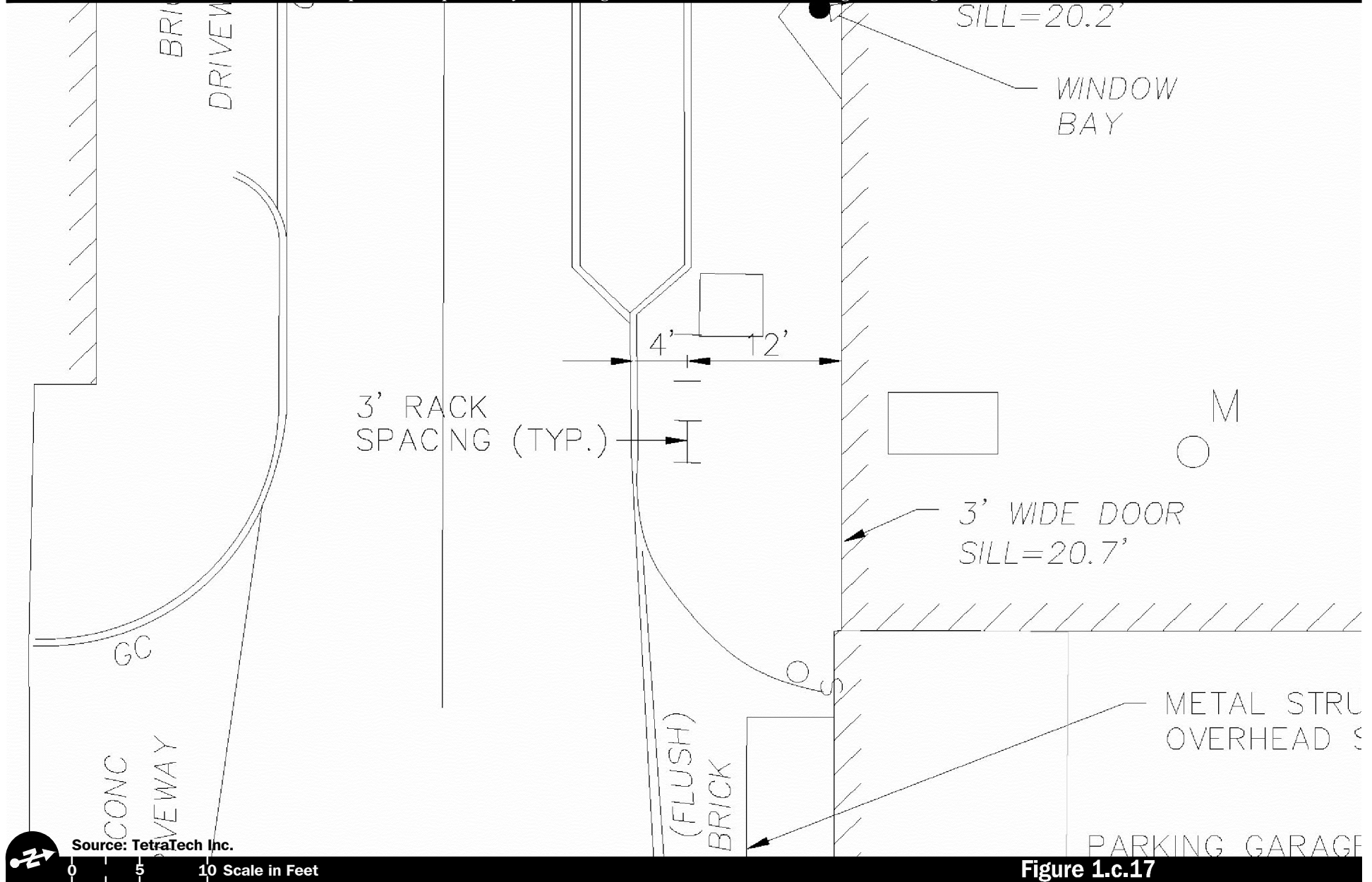


Figure 1.c.16

Location A
Short-Term Bicycle Parking
10 Bicycles



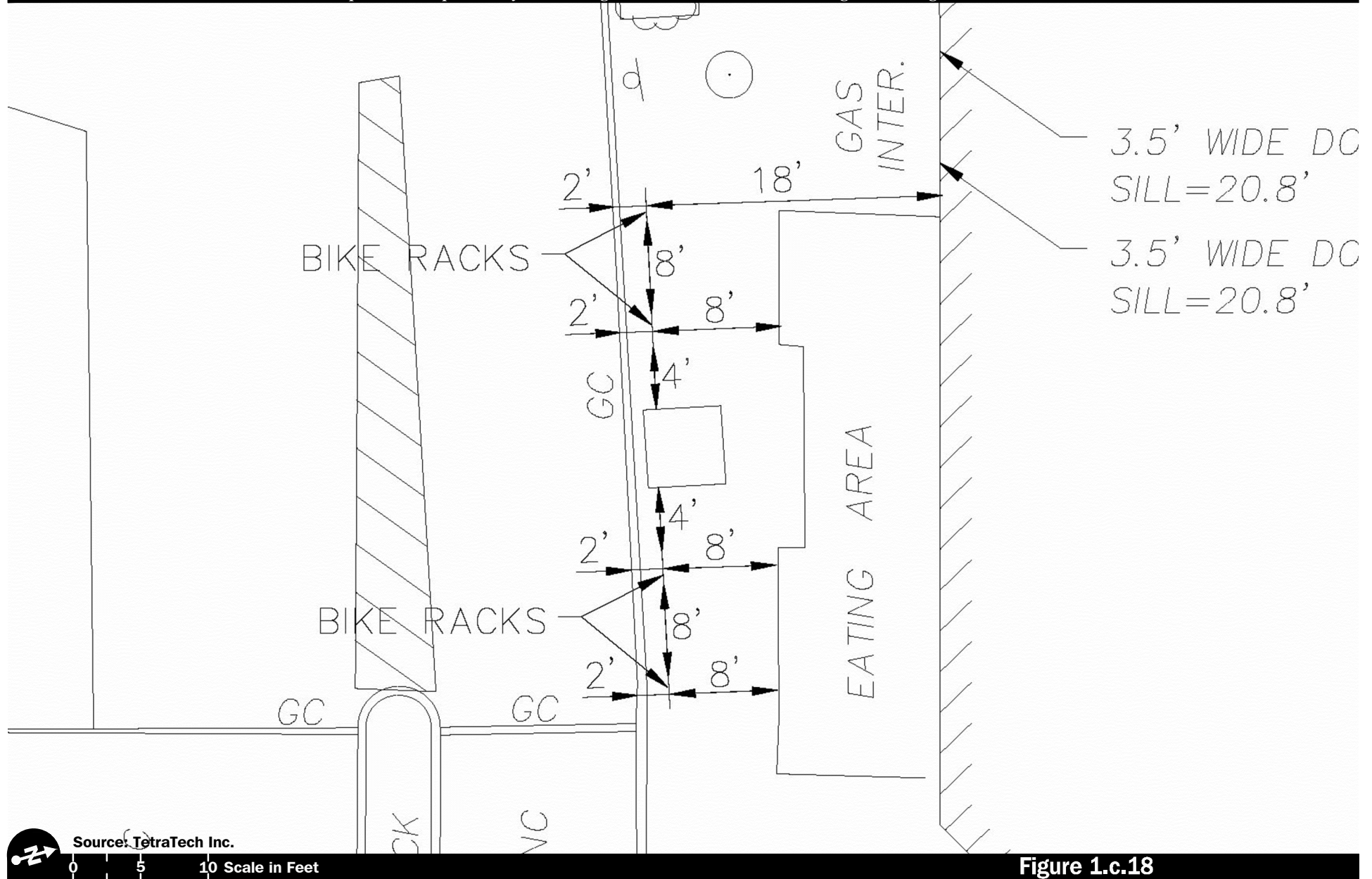
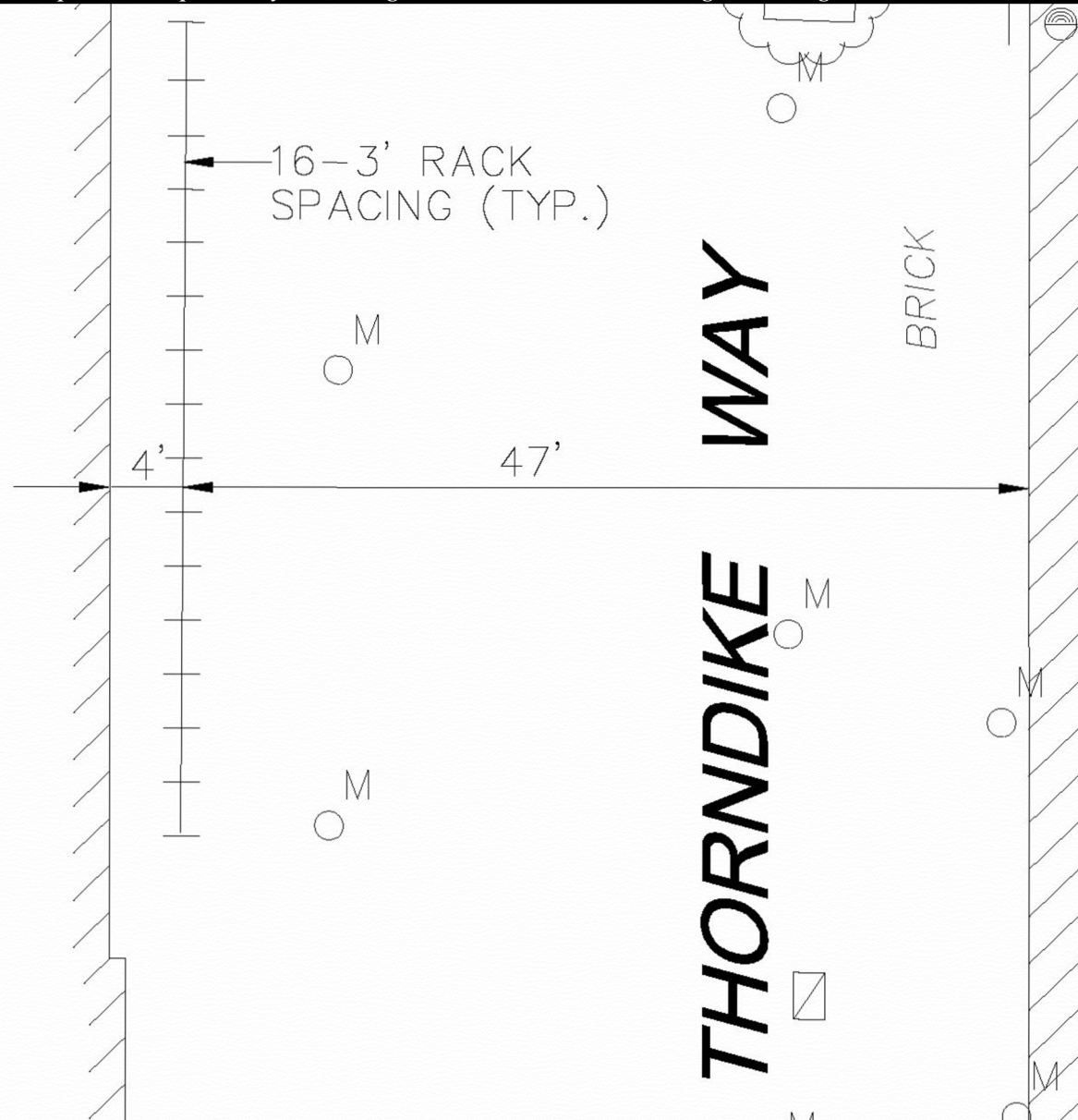


Figure 1.c.18

Locations C and D
Short-Term Bicycle Parking
8 Bicycles



Location E
Short-Term Bicycle Parking
2 Bicycles



Source: TetraTech Inc.

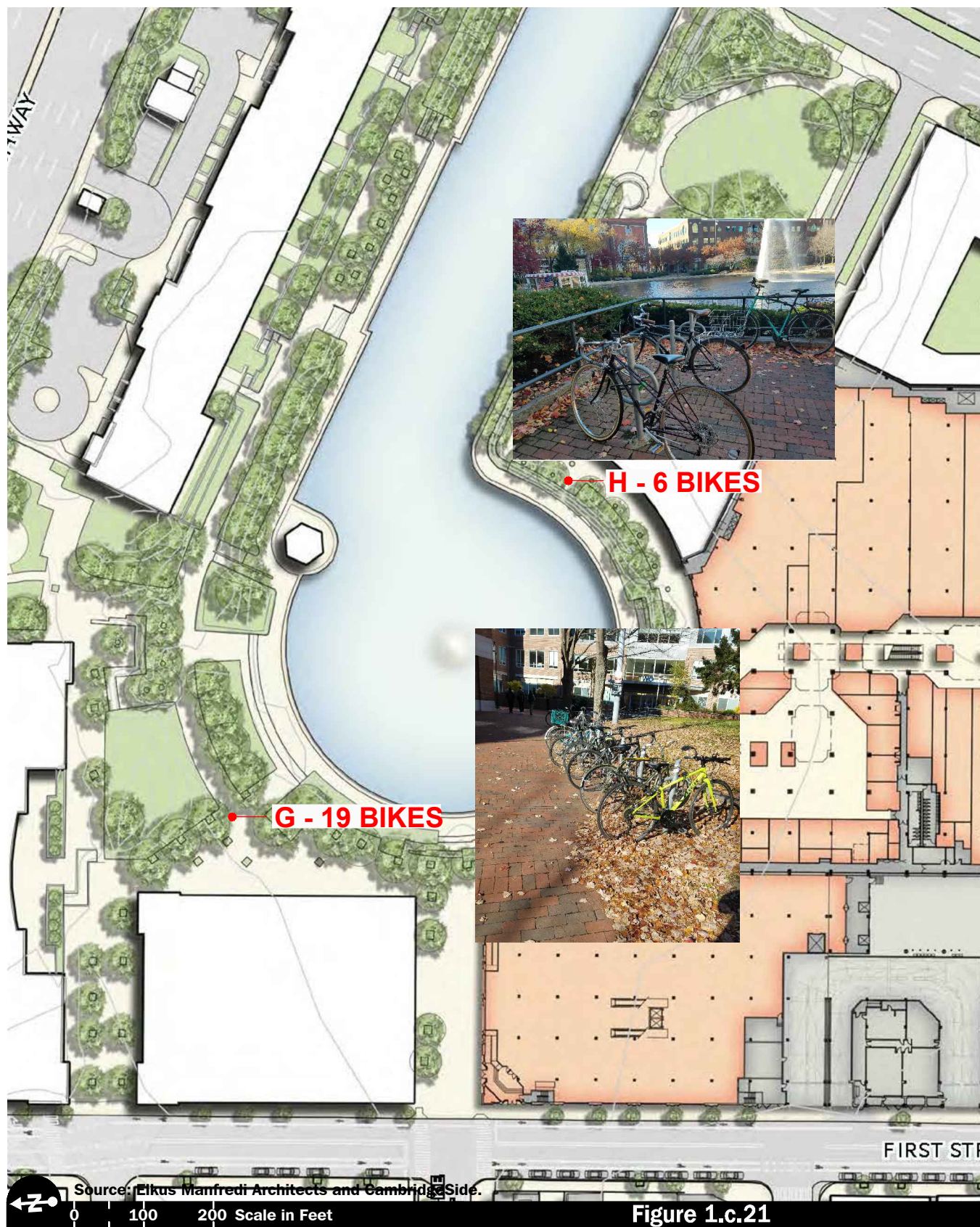
0 5 10 Scale in Feet

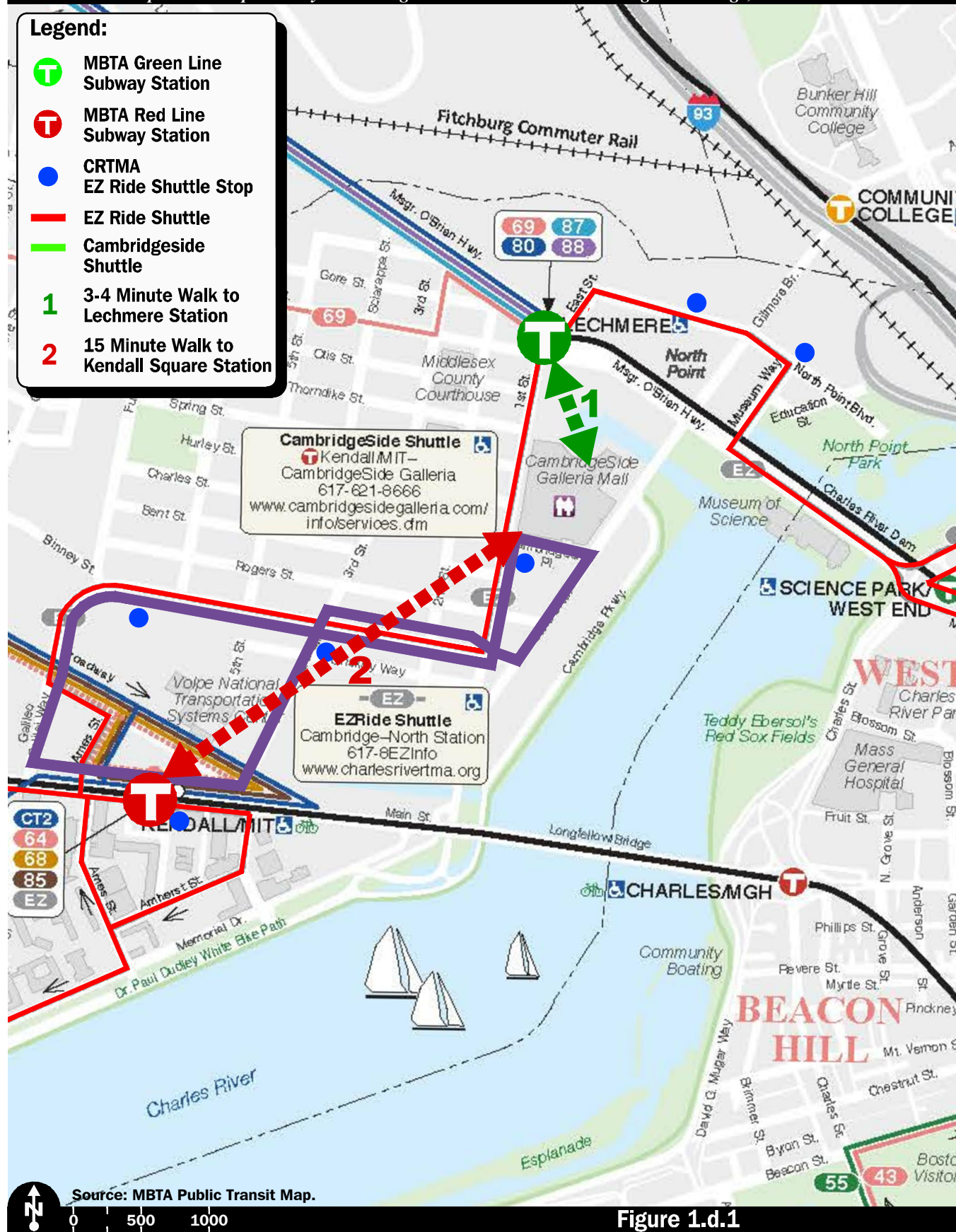


Vanasse & Associates, Inc.
Transportation Engineers & Planners

Figure 1.c.20

Location F
Short-Term Bicycle Parking
32 Bicycles





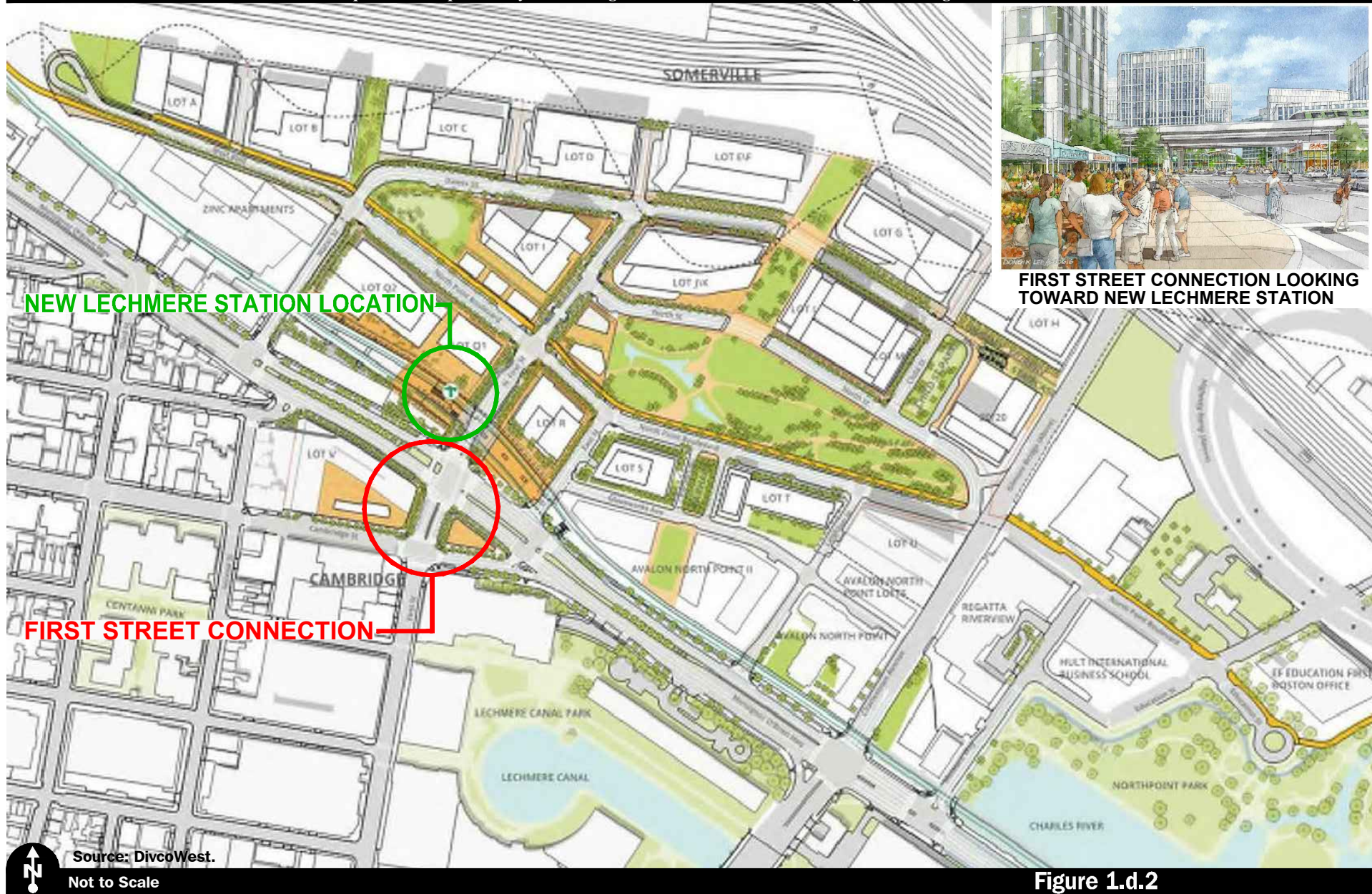


Figure 1.d.2

Proposed First Street Connection and Proposed Lechmere Station Location

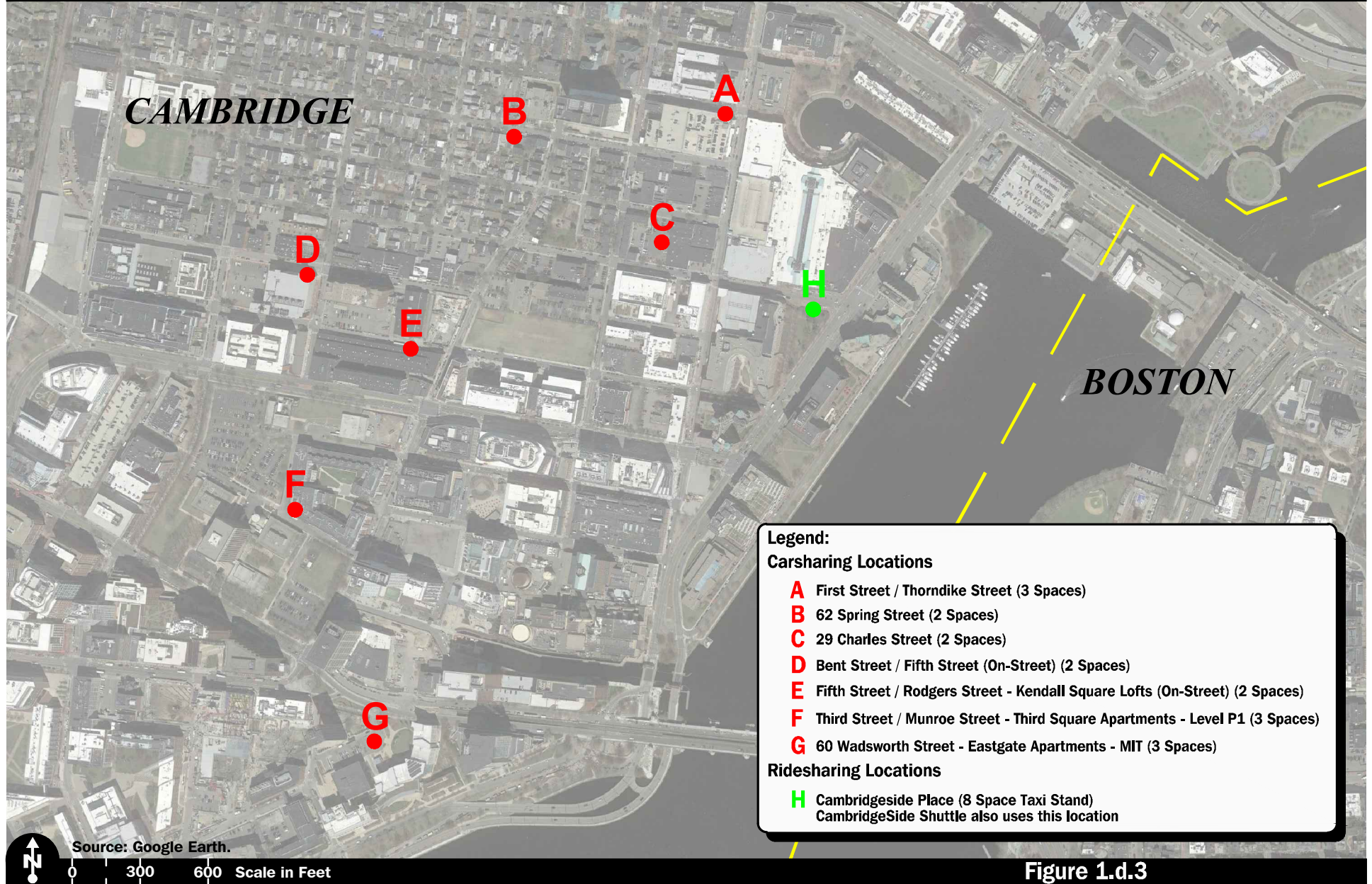


Figure 1.d.3

Carsharing and Ridesharing
Services Map



Figure 1.d.4

Bikesharing Stations Map