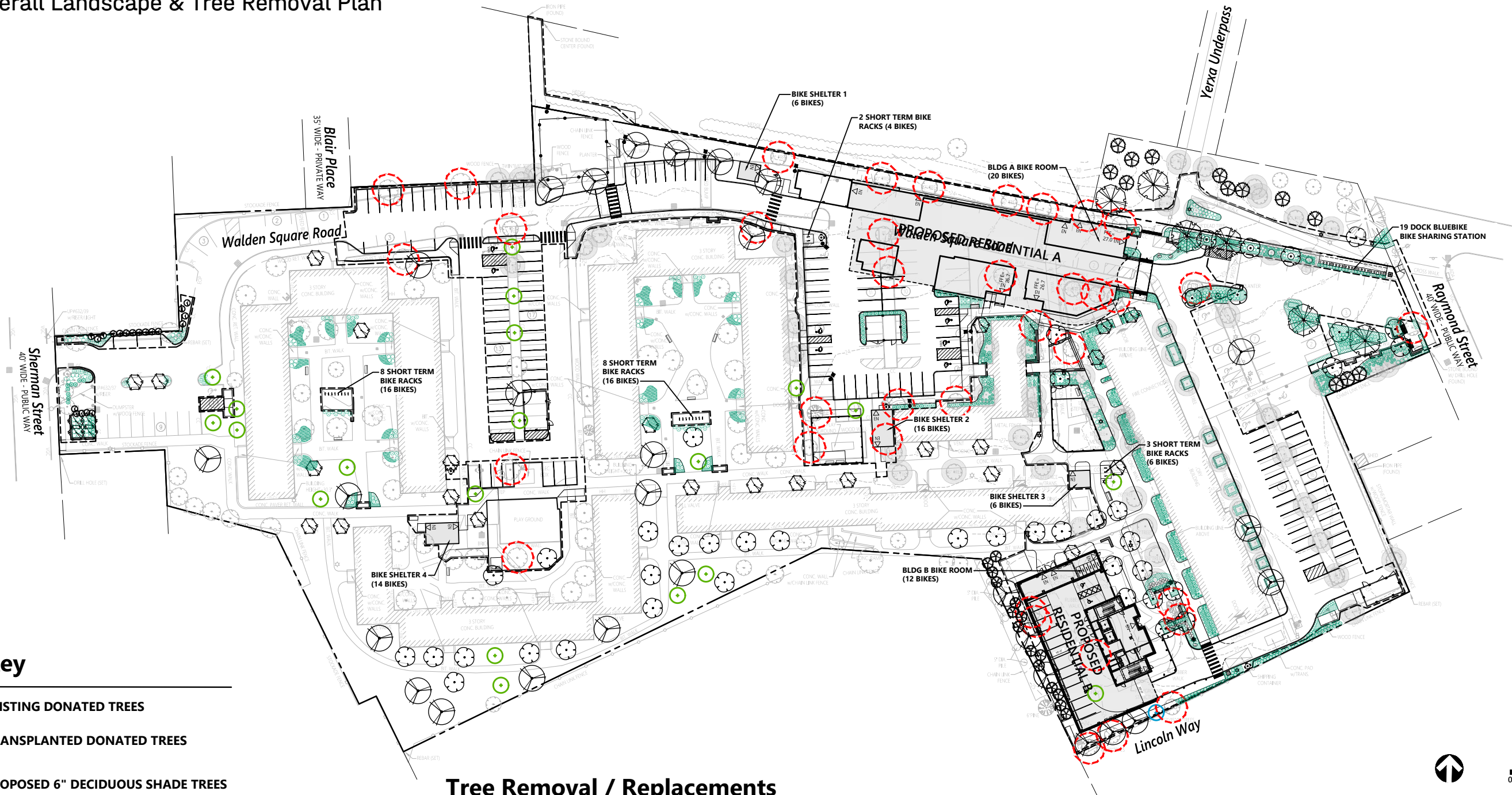












L1.00 Overall Landscape & Tree Removal Plan



Symbol Key

-  EXISTING DONATED TREES
-  TRANSPLANTED DONATED TREES
-  PROPOSED 6" DECIDUOUS SHADE TREES
-  PROPOSED 4" DECIDUOUS SHADE TREES
-  PROPOSED 4" ORNAMENTAL TREES
-  PROPOSED 3" ORNAMENTAL TREES
-  PROPOSED 12' HT EVERGREEN TREE (4" CAL.)
-  PROPOSED 7' HT EVERGREEN TREE (2" CAL.)
-  TREES TO BE REMOVED
-  TREES TO BE PRESERVED

Tree Removal / Replacements

37 TREES TO BE REMOVED
576 CALIPER INCHES OF TREES TO BE REMOVED

20 TREES * HAVE BEEN DONATED AND INSTALLED ** 40 CAL. INCHES
536 CALIPER INCHES REQ.

* 2" CALIPER ASSUMED
** 6 DONATED TREES NOT FOUND

Quantity	Tree Type	Caliper Inches
29	4" DECIDUOUS SHADE TREES	116 CAL. IN.
6	6" DECIDUOUS SHADE TREES	36 CAL. IN.
30	3" ORNAMENTAL TREES	90 CAL. IN.
39	4" ORNAMENTAL TREES	156 CAL. IN.
28	12' HT. EVERGREEN TREES	112 CAL. IN.
20	6' HT. EVERGREEN TREES	40 CAL. IN.
TOTAL		550 CALIPER INCHES PROPOSED

NOTE:
REFER TO LIGHTING PHOTOMETRIC PLANS
FOR FINAL LIGHT FIXTURE LOCATIONS.

Bike Parking Summary Chart

Description	Size	Capacity
BIKE SHELTER 1	16 x 13	6
BIKE SHELTER 2	16 x 28	16
BIKE SHELTER 3	16 x 13	6
BIKE SHELTER 4	16 x 25	14
BIKE ENCLOSURE IN BUILDING A	20 x 21	20
BIKE ENCLOSURE IN BUILDING B	15 x 21	12
EXTERIOR BIKE RACKS		10
TOTAL SPACES		84

AHO REQUIREMENTS (Calculated for New Buildings Only):
1.00 space per unit for the first 20 units in a building.
1.05 spaces per unit for additional units.
Building A: 60 Units 20+42 = 62 required
Building B: 35 Units 20+16 = 36 required
Required Long Term Bicycle Spaces = 98 Spaces
70 Spaces* 74 Provided
**includes 28-space reduction per Section 11.207.6.4 of the AHO zoning bylaws*
Required Short Term Bicycle Spaces = 10 Spaces 10 Provided

Note: 32 Short Term spaces (16 bikeracks) provided to replace existing bike racks in the two large courtyards.



Acer Rubrum 'Armstrong'
Armstrong Red Maple



Acer Rubrum 'Bowhall'
Bowhall Red Maple



Ulmus parvifolia 'Allee'
Allee Elm



Acer Rubrum 'October Glory'
Armstrong Red Maple



Planatus acerifolia
London Planetree



Thuja occidentalis 'Nigra'
Dark American Arborvitae



Picea glauca
White Spruce



Amelanchier laevis 'Snowcloud'
Snowcloud Serviceberry



Cercis canadensis 'Forest Pansy'
Forest Pansy Redbud



Cercis Canadensis 'Little Woody'
Little Woody Redbud

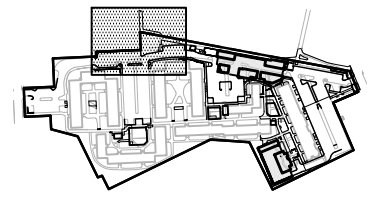


Cornus florida 'Cherokee princess'
Cherokee princess Dogwood

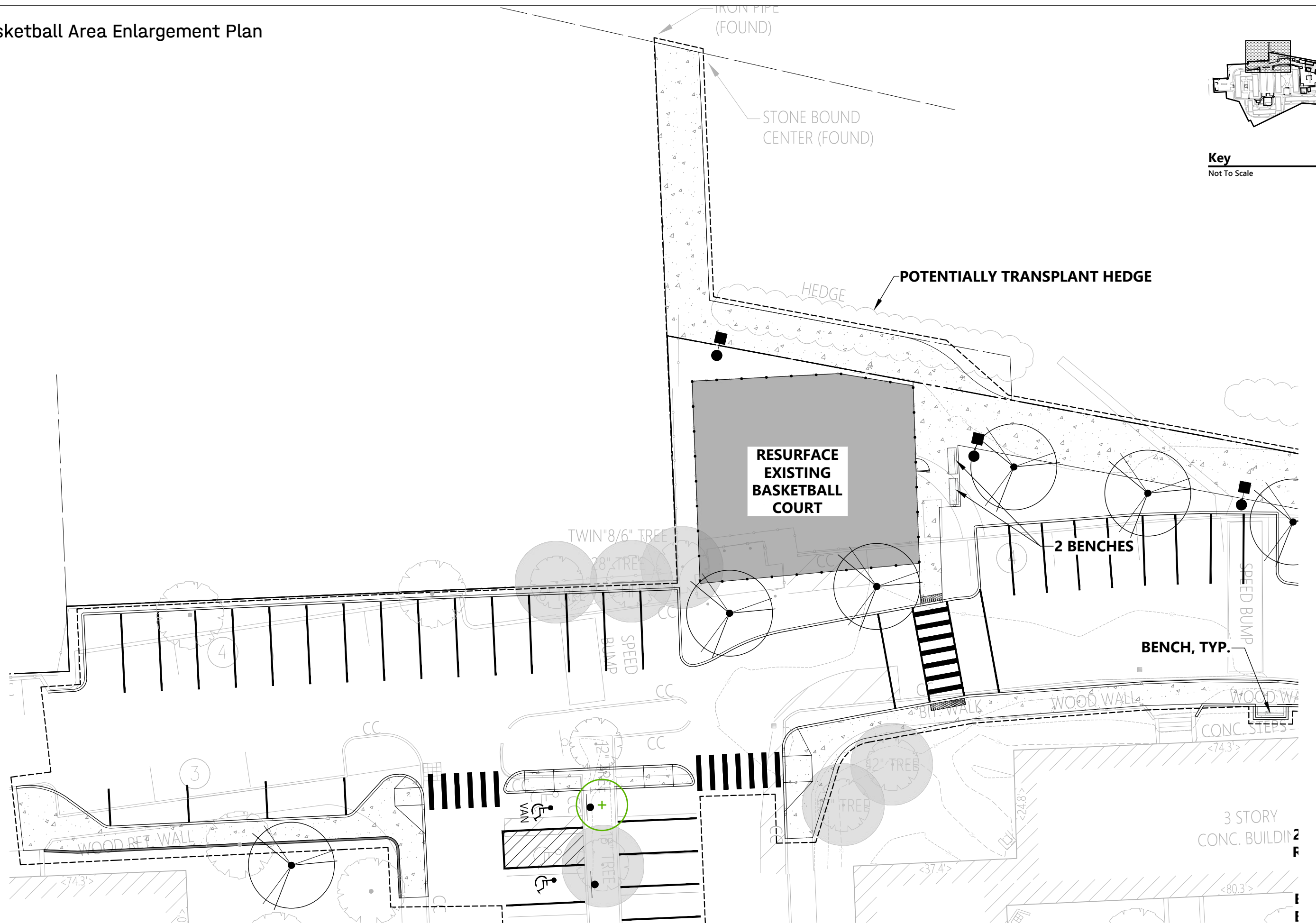


Syringa reticulata 'Ivory Pillar'
Ivory Pillar Japanese Tree lilac

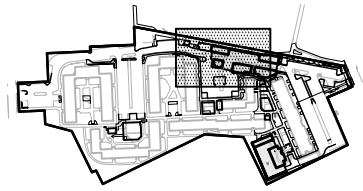
L1.01 Basketball Area Enlargement Plan



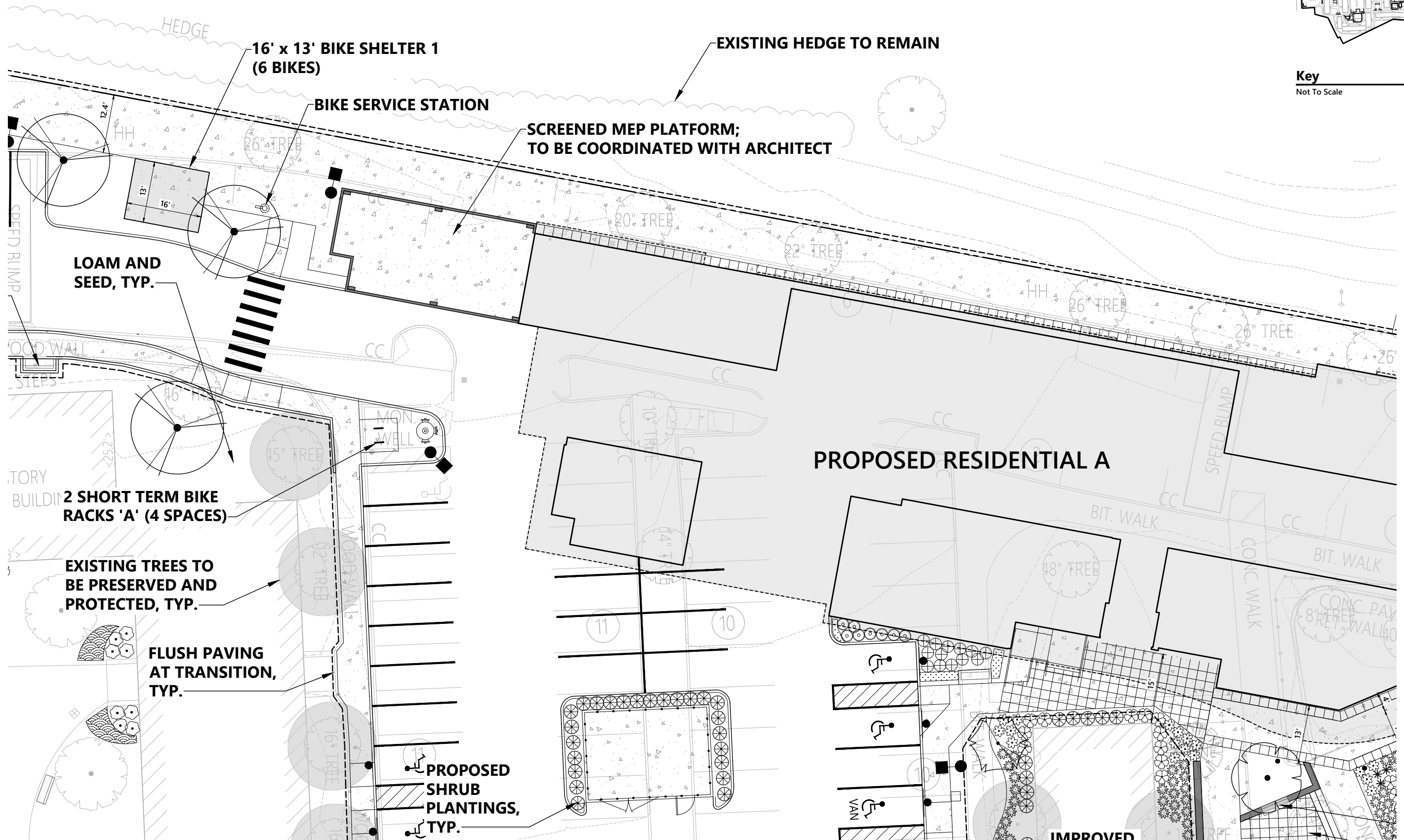
Key
Not To Scale



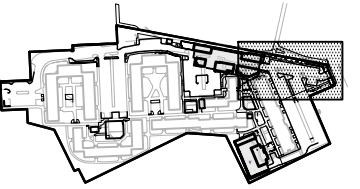
L1.02 West Area Enlargement Plan



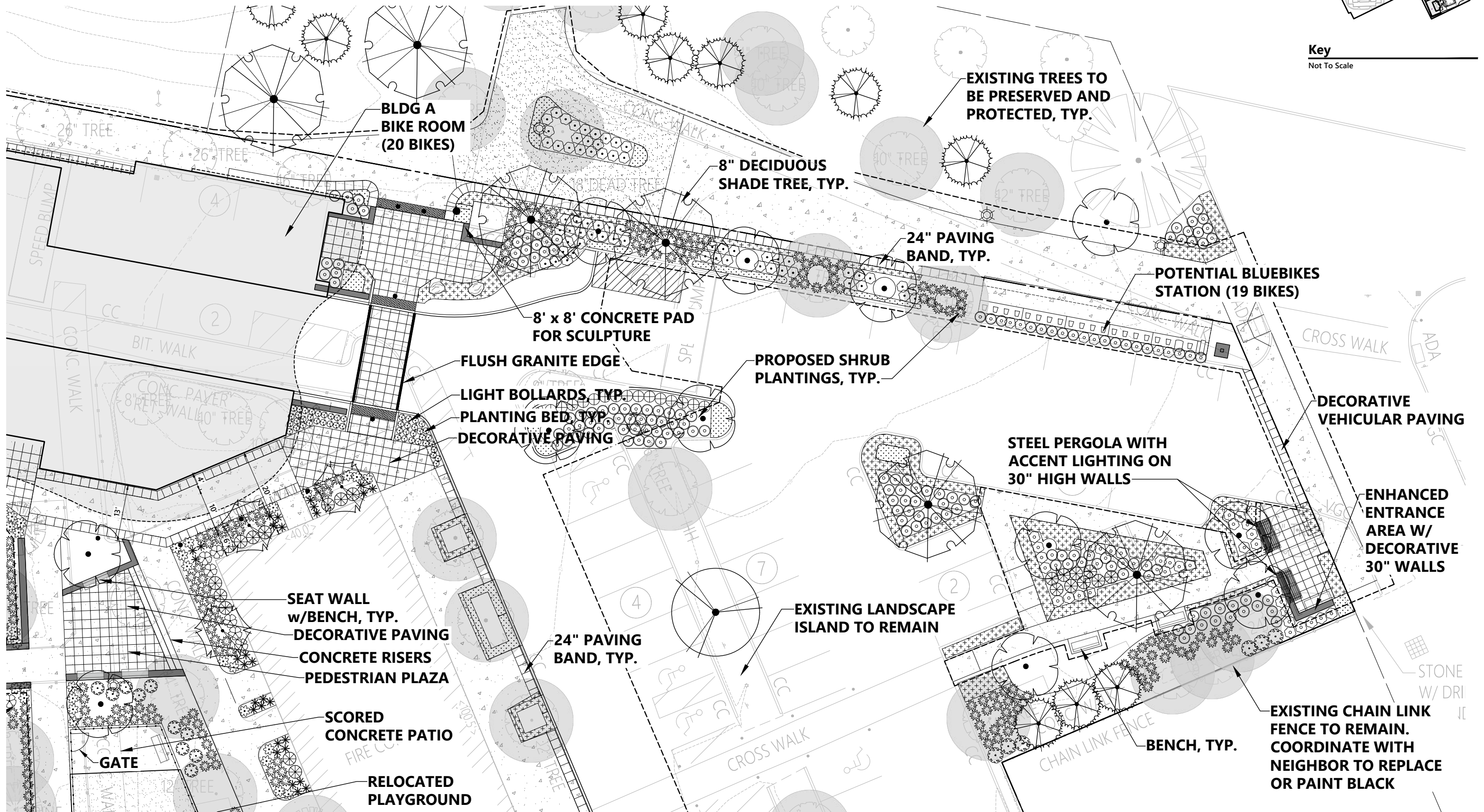
Key
Not To Scale



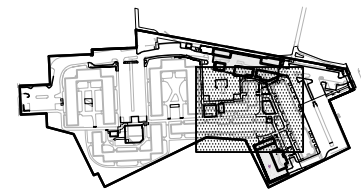
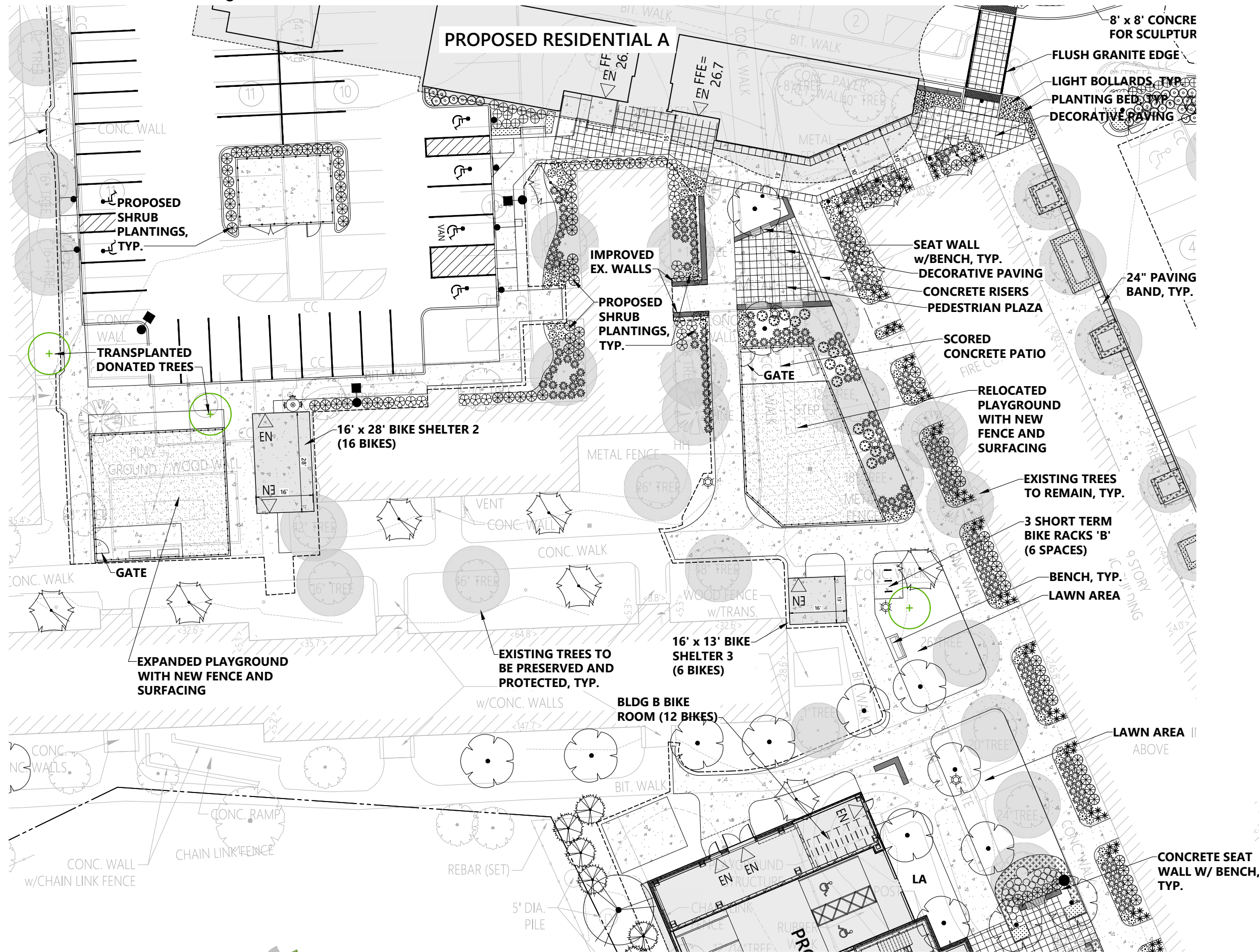
L1.03 East Area Enlargement Plan



Key
Not To Scale

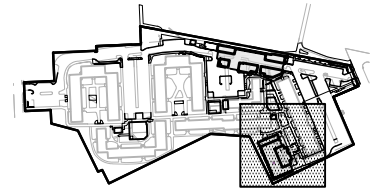
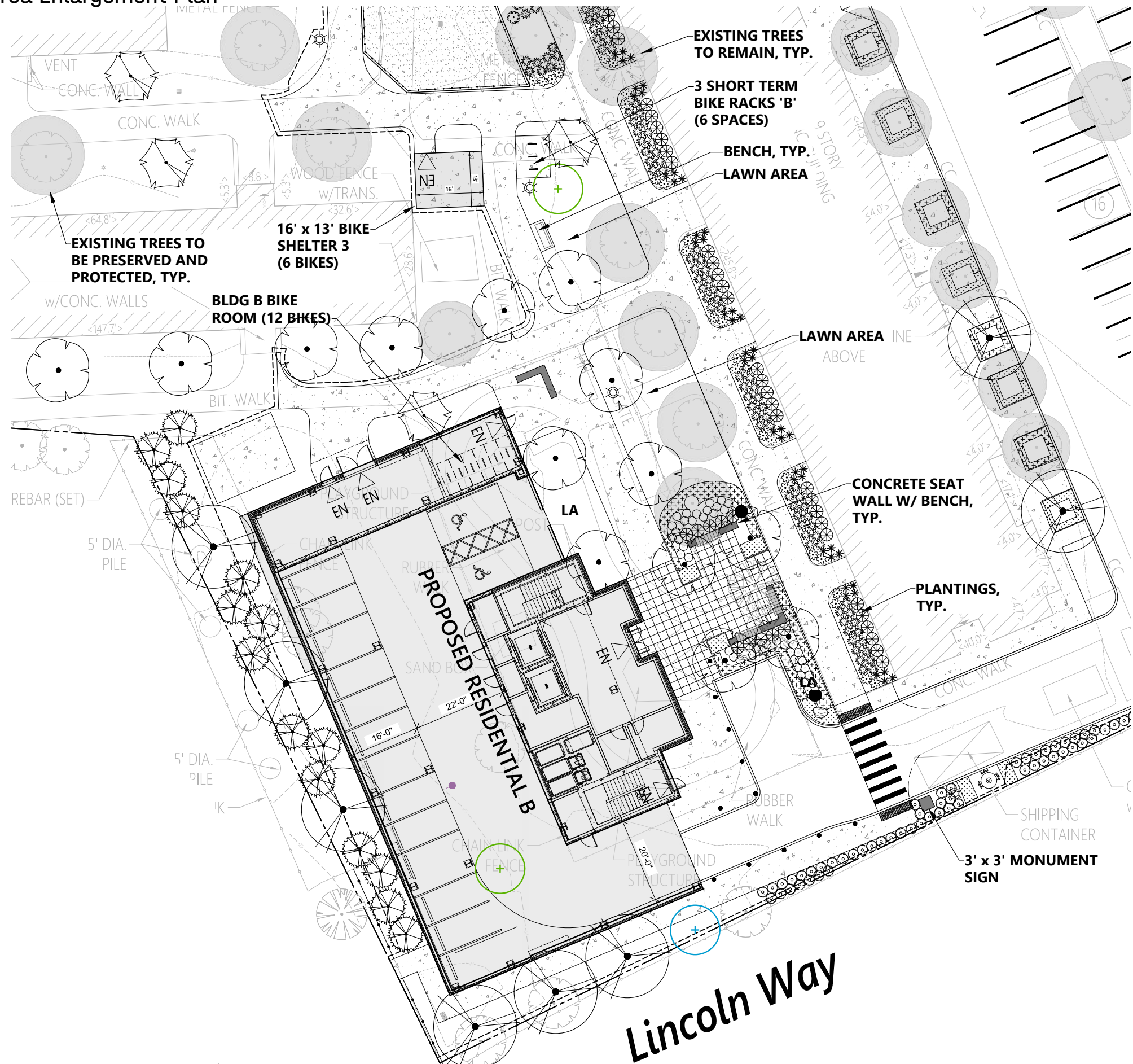


L1.04 Central Common Area Enlargement Plan



Key
Not To Scale

L1.05 Building 8 Area Enlargement Plan



Key
Not To Scale

Lincoln Way

L2.01 Tree Planting Plan

PLANT SCHEDULE

SHRUBS	QTY	BOTANICAL NAME	COMMON NAME	SIZE	SPACING
DL	40	Diervilla lonicera	Dwarf Bush Honeysuckle	2 - 2 1/2' HT.	36" o.c.
IGB	99	Ilex glabra 'Gem Box'	Gem Box Inkberry	2 - 2 1/2' HT.	36" o.c.
JBH	56	Juniperus horizontalis 'Bar Harbor'	Bar Harbor Creeping Juniper	18 - 24" SPD	30" o.c.
JW	32	Juniperus horizontalis 'Wiltonii'	Blue Rug Juniper	18 - 24" SPD	36" o.c.
KLS	88	Kalmia latifolia 'Sarah'	Sarah Mountain Laurel	2 - 2 1/2' HT.	36" o.c.
KLP	29	Kalmia latifolia Pink Charm	Pink Charm Mountain Laurel	2 - 2 1/2' HT.	36" o.c.
LF	32	Leucothoe fontanesiana Silver Run	Silver Run Drooping Leucothoe	18 - 24" SPD	36" o.c.
POL	93	Physocarpus opulifolius 'Podaras 3' TM	Lemon Candy Dwarf Ninebark	18 - 24" SPD	30" o.c.
VA	15	Viburnum acerifolium	Mapleleaf Viburnum	2 - 2 1/2' HT.	36" o.c.
VC	8	Viburnum carlesii	Korean Spice Viburnum	2 - 2 1/2' HT.	42" o.c.
ORNAMENTAL GRASSES	QTY	BOTANICAL NAME	COMMON NAME	SIZE	SPACING
CKF	7	Calamagrostis x acutiflora 'Karl Foerster'	Karl Foerster Feather Reed Grass	#2 POT	30" o.c.
PVS	279	Panicum virgatum 'Shenandoah'	Shenandoah Switch Grass	#2 POT	30" o.c.
PERENNIALS	QTY	BOTANICAL NAME	COMMON NAME	SIZE	SPACING
AD	78	Aster divaricatus	White Wood Aster	#1 POT	30" o.c.
DP	322	Dennstaedtia punctilobula	Hay-scented Fern	#1 POT	30" o.c.
HHR	51	Hemerocallis x 'Happy Returns'	Happy Returns Dwarf Daylily	#1 POT	18" o.c.
HRR	39	Hemerocallis x 'Rosy Returns'	Rosy Returns Daylily	#1 POT	18" o.c.
IVB	78	Iris versicolor	Blue Flag Iris	#2 POT	24" o.c.
GROUND COVERS	QTY	BOTANICAL NAME	COMMON NAME	SIZE	SPACING
ALP	128	Astilbe chinensis 'Little Vision in Pink'	Little Vision in Pink Astilbe	#1 POT	12" o.c.
DM	1,217	Dryopteris marginalis	Marginal Wood Fern	#1 POT	12" o.c.
LBB	265	Liriope muscari 'Big Blue'	Big Blue Lilyturf	#2 POT	18" o.c.
RLS	689	Rudbeckia x 'Little Suzy'	Little Suzy Coneflower	#1 POT	12" o.c.

Tree Removal / Replacements

37 TREES TO BE REMOVED
576 CALIPER INCHES OF TREES TO BE REMOVED

20 TREES * HAVE BEEN DONATED AND INSTALLED ** 40 CAL. INCHES
536 CALIPER INCHES REQ.

* 2" CALIPER ASSUMED
** 6 DONATED TREES NOT FOUND

PLANT SCHEDULE

DECIDUOUS TREES	QTY	BOTANICAL NAME	COMMON NAME	SIZE	24 CAL. IN.
AA	6	Acer rubrum 'Armstrong'	Armstrong Red Maple	4" CAL.	24 CAL. IN.
ARB	10	Acer rubrum 'Bowhall'	Bowhall Red Maple	4" CAL.	40 CAL. IN.
AR4	9	Acer rubrum 'October Glory'	October Glory Maple	4" CAL.	32 CAL. IN.
AR6	2	Acer rubrum 'October Glory'	October Glory Maple	6" CAL.	12 CAL. IN.
PA4	5	Platanus acerifolia	London Planetree	4" CAL.	20 CAL. IN.
PA6	2	Platanus acerifolia	London Planetree	6" CAL.	12 CAL. IN.
UP	2	Ulmus parvifolia 'Ailee'	Ailee Elm	6" CAL.	12 CAL. IN.
					152 CAL. IN. TOTAL
EVERGREEN TREES	QTY	BOTANICAL NAME	COMMON NAME	SIZE	40 CAL. IN.
PG	28	Picea glauca	White Spruce	12' HT.	112 CAL. IN. 4" CAL. ASSUMED
TO	20	Thuja occidentalis 'Nigra'	Dark American Arborvitae	6' - 7' HT.	40 CAL. IN. 2" CAL. ASSUMED
					152 CAL. IN. TOTAL
FLOWERING TREES	QTY	BOTANICAL NAME	COMMON NAME	SIZE	57 CAL. IN.
AL	19	Amelanchier laevis 'Snowcloud'	Snowcloud Serviceberry	3" CAL.	100 CAL. IN.
FPR	25	Cercis canadensis 'Forest Pansy'	Forest Pansy Redbud	4" CAL.	15 CAL. IN.
LWR	5	Cercis canadensis 'Little Woody'	Little Woody Redbud	3" CAL.	18 CAL. IN.
CF	6	Cornus florida 'Cherokee Princess'	Cherokee Princess Dogwood	3" CAL.	56 CAL. IN.
SR	14	Syringa reticulata 'Ivory Pillar'	Ivory Pillar Japanese Tree Lilac	4" CAL.	246 CAL. IN.
					550 CAL. IN. TOTAL

Planting Notes

- ALL PROPOSED PLANTING LOCATIONS SHALL BE STAKED AS SHOWN ON THE PLANS FOR FIELD REVIEW AND APPROVAL BY THE LANDSCAPE ARCHITECT PRIOR TO INSTALLATION.
- CONTRACTOR SHALL VERIFY LOCATIONS OF ALL BELOW GRADE AND ABOVE GRADE UTILITIES AND NOTIFY OWNER'S REPRESENTATIVE OF CONFLICTS.
- NO PLANT MATERIALS SHALL BE INSTALLED UNTIL ALL GRADING AND CONSTRUCTION HAS BEEN COMPLETED IN THE IMMEDIATE AREA. CONTRACTOR SHALL NOTIFY OWNER'S REPRESENTATIVE OF ANY CONFLICT.
- A 3-INCH DEEP MULCH PER SPECIFICATION SHALL BE INSTALLED UNDER ALL TREES AND SHRUBS, AND IN ALL PLANTING BEDS, UNLESS OTHERWISE INDICATED ON THE PLANS, OR AS DIRECTED BY OWNER'S REPRESENTATIVE.
- ALL TREES SHALL BE BALLED AND BURLAPPED, UNLESS OTHERWISE NOTED IN THE DRAWINGS OR SPECIFICATION, OR APPROVED BY THE OWNER'S REPRESENTATIVE.
- FINAL QUANTITY FOR EACH PLANT TYPE SHALL BE AS GRAPHICALLY SHOWN ON THE PLAN. THIS NUMBER SHALL TAKE PRECEDENCE IN CASE OF ANY DISCREPANCY BETWEEN QUANTITIES SHOWN ON THE PLAN LIST AND ON THE PLAN. THE CONTRACTOR SHALL REPORT ANY DISCREPANCIES BETWEEN THE NUMBER OF PLANTS SHOWN ON THE PLAN LIST AND PLANT LABELS PRIOR TO BIDDING.
- ANY PROPOSED PLANT SUBSTITUTIONS MUST BE REVIEWED BY LANDSCAPE ARCHITECT AND APPROVED IN WRITING BY THE OWNER'S REPRESENTATIVE.
- ALL PLANT MATERIALS INSTALLED SHALL MEET THE SPECIFICATIONS OF THE "AMERICAN STANDARDS FOR NURSERY STOCK" BY THE AMERICAN ASSOCIATION OF NURSERYMEN AND CONTRACT DOCUMENTS.
- ALL PLANT MATERIALS SHALL BE GUARANTEED FOR ONE YEAR FOLLOWING DATE OF FINAL ACCEPTANCE.
- AREAS DESIGNATED "LOAM & SEED" SHALL RECEIVE MINIMUM 6" OF LOAM AND SPECIFIED SEED MIX. LAWN OVER 2:1 SLOPE SHALL BE PROTECTED WITH EROSION CONTROL FABRIC.
- ALL DISTURBED AREAS NOT OTHERWISE NOTED ON CONTRACT DOCUMENTS SHALL BE LOAM AND SEED OR MULCHED AS DIRECTED BY OWNER'S REPRESENTATIVE.
- THIS PLAN IS INTENDED FOR PLANTING PURPOSES. REFER TO SITE / CIVIL DRAWINGS FOR ALL OTHER SITE CONSTRUCTION INFORMATION.

Tree Protection

- EXISTING TREES TO REMAIN SHALL BE PROTECTED WITH TEMPORARY CONSTRUCTION FENCE. ERECT FENCE AT EDGE OF THE TREE DRUPLINE PRIOR TO START OF CONSTRUCTION.
- CONTRACTOR SHALL NOT OPERATE VEHICLES WITHIN THE TREE PROTECTION AREA. CONTRACTOR SHALL NOT STORE VEHICLES OR MATERIALS, OR DISPOSE OF ANY WASTE MATERIALS, WITHIN THE TREE PROTECTION AREA.
- DAMAGE TO EXISTING TREES CAUSED BY THE CONTRACTOR SHALL BE REPAIRED BY A CERTIFIED ARBORIST AT THE CONTRACTOR'S EXPENSE.

Plant Maintenance Notes

- CONTRACTOR SHALL PROVIDE COMPLETE MAINTENANCE OF THE LAWNS AND PLANTINGS. NO IRRIGATION IS PROPOSED FOR THIS SITE. THE CONTRACTOR SHALL SUPPLY SUPPLEMENTAL WATERING FOR NEW LAWNS AND PLANTINGS DURING THE ONE YEAR PLANT GUARANTEE PERIOD.
- CONTRACTOR SHALL PROVIDE ALL MATERIALS, LABOR, AND EQUIPMENT FOR THE COMPLETE LANDSCAPE MAINTENANCE WORK. WATER SHALL BE PROVIDED BY THE CONTRACTOR.
- WATERING SHALL BE REQUIRED DURING THE GROWING SEASON, WHEN NATURAL RAINFALL IS BELOW ONE INCH PER WEEK.
- WATER SHALL BE APPLIED IN SUFFICIENT QUANTITY TO THOROUGHLY SATURATE THE SOIL IN THE ROOT ZONE OF EACH PLANT.
- CONTRACTOR SHALL REPLACE DEAD OR DYING PLANTS AT THE END OF THE ONE YEAR GUARANTEE PERIOD. CONTRACTOR SHALL TURN OVER MAINTENANCE TO THE FACILITY MAINTENANCE STAFF AT THAT TIME.

Plant List

Note: Plants shall be a selection of the following materials:

Shrubs
 Clethra 'Hummingbird' - Summersweet
 Ilex glabra 'Shamrock' - Inkberry Holly
 Ilex verticillata 'Red Sprite' - Winterberry
 Rhododendron canadense 'Albiflorum'
 Rhododendron Pinsterbloom - Azalea
 Kalmia latifolia 'Sarah' - Mountain Laurel
 Physocarpus opulifolius 'Little Devil' - Dwarf Ninebark
 Viburnum acerifolium - Mapleleaf Viburnum

Perennial/Groundcover
 Aster novi-belgii 'Woods Pink' - New York Aster
 Iris versicolor - Blue Flag Iris
 Juniperus communis 'Green Carpet'
 Rudbeckia fulgida 'Little Suzy' - Black-Eyed Susan
 Liriope muscari 'Big Blue' - Lilyturf
 Pennisetum alopecuroides 'Hameln' - Fountain Grass
 Calamagrostis x acutiflora 'Karl Foerster' - Feather Reed Grass
 Eragrostis spectabilis - Purple Love Grass
 Panicum virgatum 'Shenandoah' - Switch Grass
 Dennstaedtia punctilobula - Hay-scented Fern

Ornamental trees
 Amelanchier laevis 'Snowcloud' - Serviceberry
 Cercis canadensis 'Little Wood' - Redbud
 Cornus x rutgersensis 'Constellation' - Dogwood
 Cornus florida 'Cherokee Princess' - Dogwood
 Crataegus crus-galli inermis - Thornless Cockspur Hawthorn
 Syringa reticulata 'Ivory Silk' - Japanese Tree Lilac

Evergreen trees
 Thuja occidentalis 'Nigra' - Dark American Arborvitae (6 - 7' HT.)

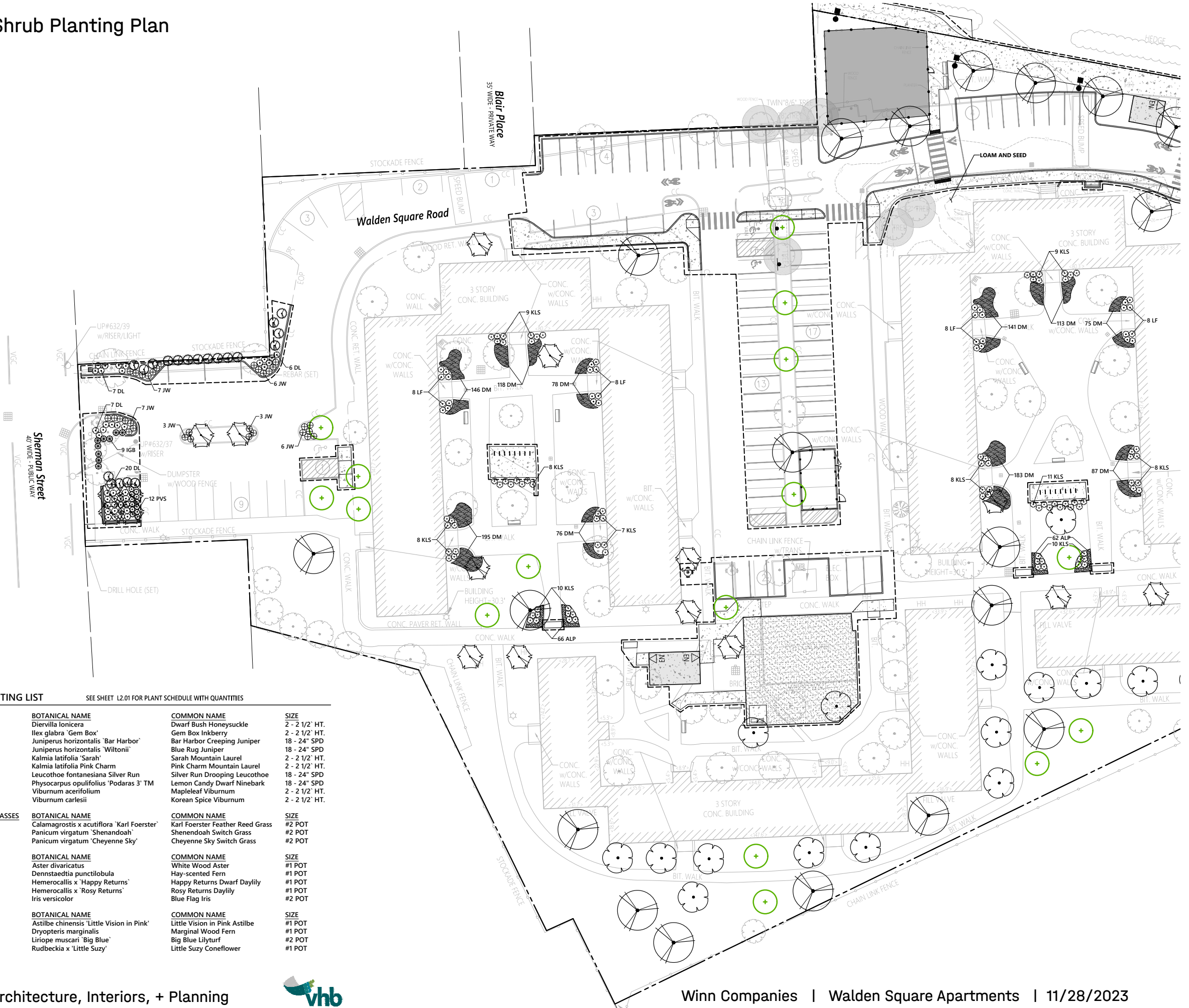
Shade trees
 Acer rubrum 'October Glory' - Red Maple
 Acer rubrum 'Bowhall' - Bowhall Red Maple
 Betula nigra 'Heritage' - River Birch
 Ulmus parvifolia - Elm

Symbol Key

- EXISTING DONATED TREES
- TRANSPLANTED DONATED TREES
- PROPOSED 6" DECIDUOUS SHADE TREES
- PROPOSED 4" DECIDUOUS SHADE TREES
- PROPOSED 4" ORNAMENTAL TREES
- PROPOSED 3" ORNAMENTAL TREES
- PROPOSED 12' HT EVERGREEN TREE (4" CAL.)



L2.03 Shrub Planting Plan

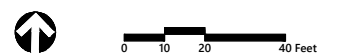


SHRUB PLANTING LIST

SEE SHEET L2.01 FOR PLANT SCHEDULE WITH QUANTITIES

SHRUBS	BOTANICAL NAME	COMMON NAME	SIZE
DL	<i>Diervilla lonicera</i>	Dwarf Bush Honeysuckle	2 - 2 1/2' HT.
IGB	<i>Ilex glabra</i> 'Gem Box'	Gem Box Inkberry	2 - 2 1/2' HT.
JBH	<i>Juniperus horizontalis</i> 'Bar Harbor'	Bar Harbor Creeping Juniper	18 - 24" SPD
JW	<i>Juniperus horizontalis</i> 'Wiltonii'	Blue Rug Juniper	18 - 24" SPD
KLS	<i>Kalmia latifolia</i> 'Sarah'	Sarah Mountain Laurel	2 - 2 1/2' HT.
KLP	<i>Kalmia latifolia</i> 'Pink Charm'	Pink Charm Mountain Laurel	2 - 2 1/2' HT.
LF	<i>Leucothoe fontanesiana</i> Silver Run	Silver Run Drooping Leucothoe	18 - 24" SPD
POL	<i>Physocarpus opulifolius</i> 'Podaras 3' TM	Lemon Candy Dwarf Ninebark	18 - 24" SPD
VA	<i>Viburnum acerifolium</i>	Mapleleaf Viburnum	2 - 2 1/2' HT.
VC	<i>Viburnum carlesii</i>	Korean Spice Viburnum	2 - 2 1/2' HT.
ORNAMENTAL GRASSES	BOTANICAL NAME	COMMON NAME	SIZE
CKF	<i>Calamagrostis x acutiflora</i> 'Karl Foerster'	Karl Foerster Feather Reed Grass	#2 POT
PVS	<i>Panicum virgatum</i> 'Shenadoah'	Shenadoah Switch Grass	#2 POT
PVC	<i>Panicum virgatum</i> 'Cheyenne Sky'	Cheyenne Sky Switch Grass	#2 POT
PERENNIALS	BOTANICAL NAME	COMMON NAME	SIZE
AD	<i>Aster divaricatus</i>	White Wood Aster	#1 POT
DP	<i>Dennstaedtia punctilobula</i>	Hay-scented Fern	#1 POT
HHR	<i>Hemerocallis x 'Happy Returns'</i>	Happy Returns Dwarf Daylily	#1 POT
HRR	<i>Hemerocallis x 'Rosy Returns'</i>	Rosy Returns Daylily	#1 POT
IVB	<i>Iris versicolor</i>	Blue Flag Iris	#2 POT
GROUND COVERS	BOTANICAL NAME	COMMON NAME	SIZE
ALP	<i>Astilbe chinensis</i> 'Little Vision in Pink'	Little Vision in Pink Astilbe	#1 POT
DM	<i>Dryopteris marginalis</i>	Marginal Wood Fern	#1 POT
LBB	<i>Liriope muscari</i> 'Big Blue'	Big Blue Lilyturf	#2 POT
RLS	<i>Rudbeckia x 'Little Suzy'</i>	Little Suzy Coneflower	#1 POT

NOTE: SEE SHEET L2.01 FOR PLANT LIST.



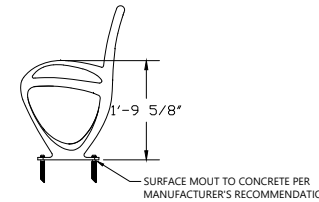
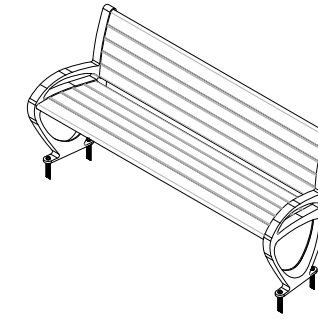
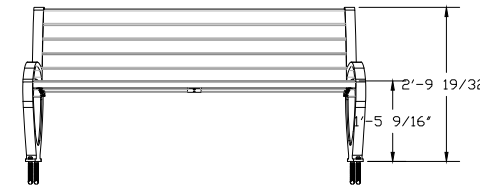
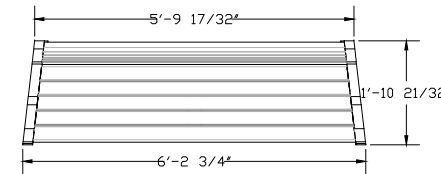
L3.01 Landscape Details



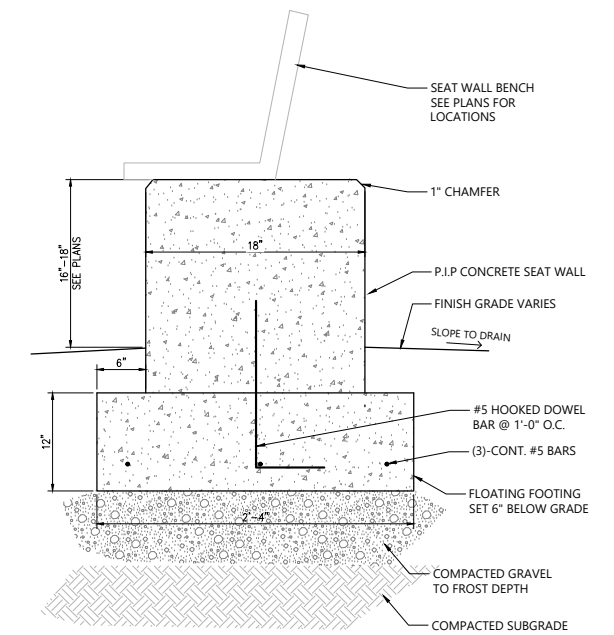
MODEL	OVERALL HEIGHT (PRESTANDARD)	OVERALL HEIGHT (SURFACE MOUNT)	OVERALL WIDTH	OVERALL DEPTH	OVERALL WEIGHT	CAPACITY
SLAPR 24C	45.5" (1155 mm)	41.5" (1054 mm)	21.5" (543 mm)	15.0" (381 mm)	114 lbs (52 kg)	24 gallon (91 liter)
SLAPR 24S	45.5" (1155 mm)	41.5" (1054 mm)	21.5" (543 mm)	15.0" (381 mm)	117 lbs (53 kg)	24 gallon (91 liter)

NOTE
TRASH RECEPTACLE TO BE APEX STYLE, 24 GALLON, WITH STAINLESS STEEL FINISH AND POWDERCOATED ALUMINUM RAIN COVER AS MANUFACTURED BY FORMS+SURFACES, INC.

Trash Receptacle 11/15
N.T.S. Source: VHB LD.



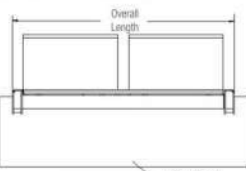
6' Bench 8/20
N.T.S. Source: VHB



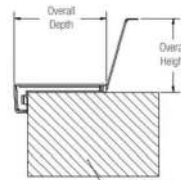
Seat Wall 1/17
N.T.S. Source: VHB



Plan View

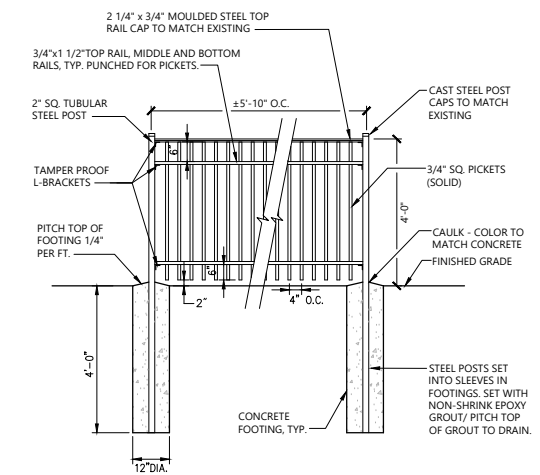


Elevation



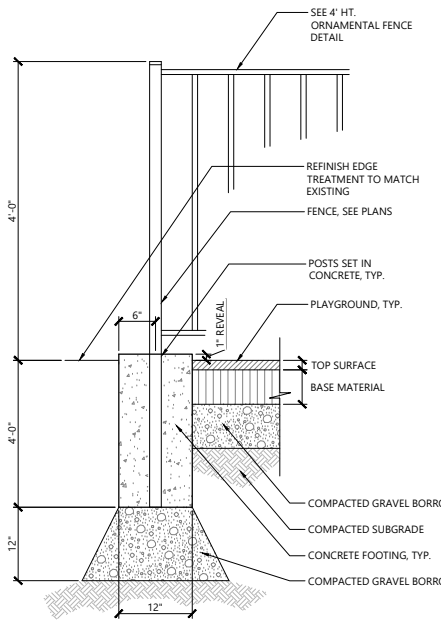
Section

Seat Wall Bench 11/19
N.T.S. Source: VHB LD.

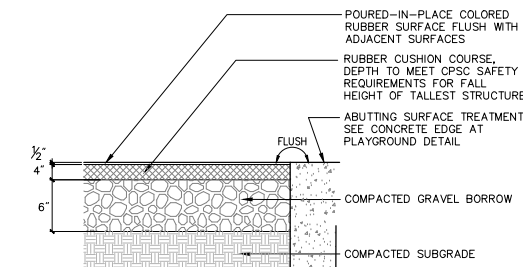


NOTES:
1. CONTRACTOR SHALL SUBMIT SHOP DRAWINGS, BASED ON FIELD MEASUREMENTS, FOR APPROVAL PRIOR TO FABRICATION.
2. ALL STEEL SHALL BE HOT DIPPED GALVANIZED WITH FACTORY APPLIED ENAMEL FINISH TO MATCH EXISTING FENCE.

4' Ht. Ornamental Metal Fence 11/15
N.T.S. Source: VHB LD.

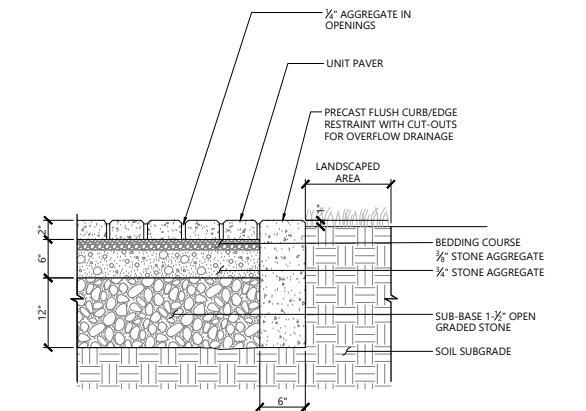


Edge Treatment at Playground 11/19
N.T.S. Source: VHB LD.



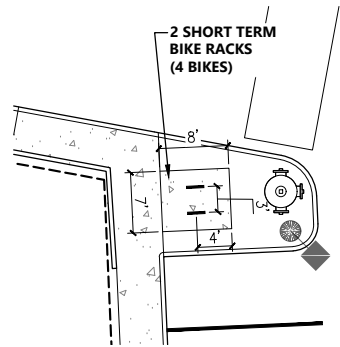
Notes:
1. FINAL DETAILING SHALL BE PROVIDED BY PLAYGROUND CONSULTANT.
2. SURFING MATERIALS AND DEPTHS SHALL MEET CPSC SAFETY REQUIREMENTS.
3. SUBMIT SHOP DRAWINGS FOR PATTERN AND COLORS FOR APPROVAL BY OWNER'S REPRESENTATIVE PRIOR TO INSTALLATION.
4. SLOPE TO DRAIN. SHALL MEET ALL MAAB REQUIREMENTS.
5. OWNER TO CONSULT WITH PLAYGROUND MANUFACTURER REPRESENTATIVE FOR ANY NEW PLAYGROUND EQUIPMENT CODE REQUIREMENTS PRIOR TO INSTALLATION OF NEW SURFACING.

Playground Surfacing 11/19
N.T.S. Source: VHB LD.

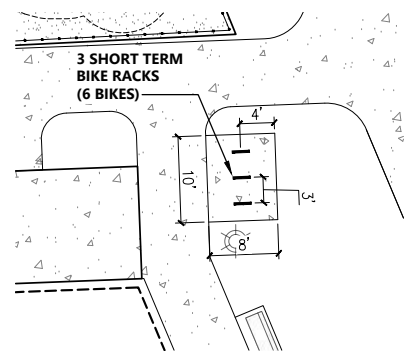


Unit Paver on Permeable Base 1/16
N.T.S. Source: VHB LD.

L3.02 Landscape Details

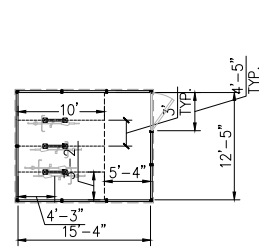


BR 'A'



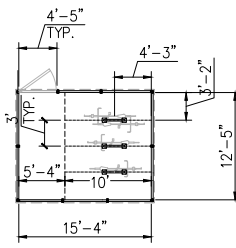
BR 'B'

16x13
BS 1



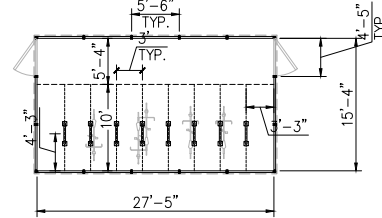
6 Bikes

16x13
BS 3



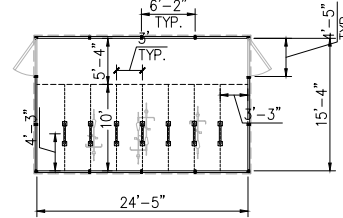
6 Bikes

16x28
BS 2



16 Bikes

16x25
BS 4



14 Bikes

Note: Building dimensions are between interior walls.



Bike Shelter Concept

Source: Keniworth

Bike Rack Layouts

8/20

1" = 10'-0"

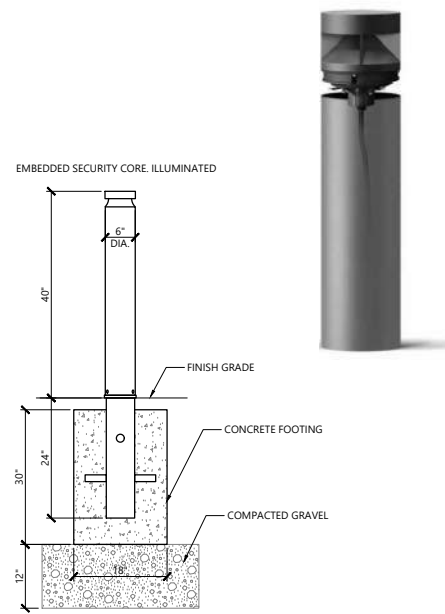
Source: VHB

Bike Shelter Layouts

8/20

1" = 10'-0"

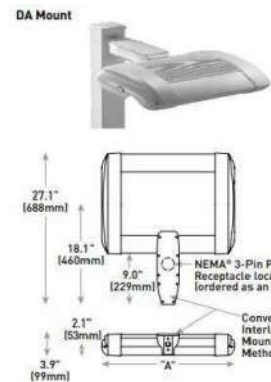
Source: VHB



Security Bollard

N.T.S.

Source: Forms + Surfaces



Light Pole Fixture

N.T.S.

Source: VHB

11/15

LD_

Building Mounted Accent Light

N.T.S.

Source: VHB

11/15

LD_



Bike Repair Station

N.T.S.

Source: VHB

11/15

LD_



NOTE
BIKE RACK TO BE ORION STYLE WITH SQUARE TUBING BY BELSON OUTDOOR PRODUCTS.

Bike Rack

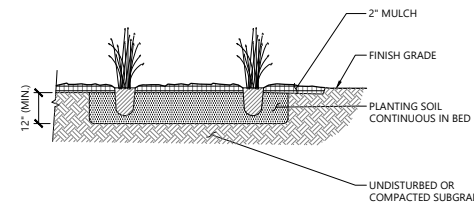
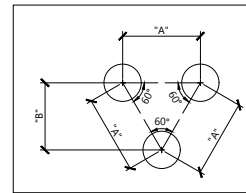
N.T.S.

Source: VHB

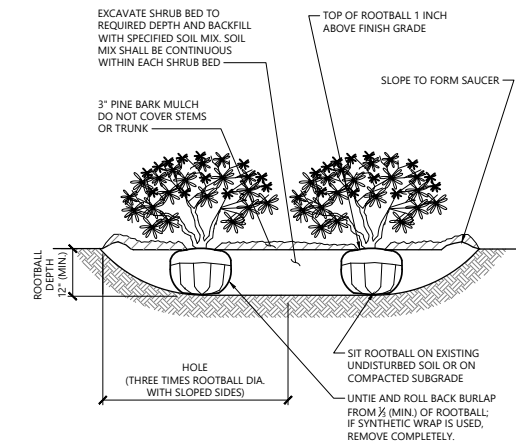
06/21

L3.03 Landscape Details

PLANT SPACING	
PLANT SPACING ("A")	ROW SPACING ("B")
6 IN. O.C.	5 IN. O.C.
8 IN. O.C.	7 IN. O.C.
10 IN. O.C.	8 1/2 IN. O.C.
12 IN. O.C.	10 1/2 IN. O.C.
15 IN. O.C.	13 IN. O.C.
18 IN. O.C.	16 IN. O.C.
24 IN. O.C.	21 IN. O.C.
30 IN. O.C.	26 IN. O.C.
36 IN. O.C.	30 IN. O.C.
48 IN. O.C.	42 IN. O.C.
54 IN. O.C.	48 IN. O.C.
60 IN. O.C.	54 IN. O.C.



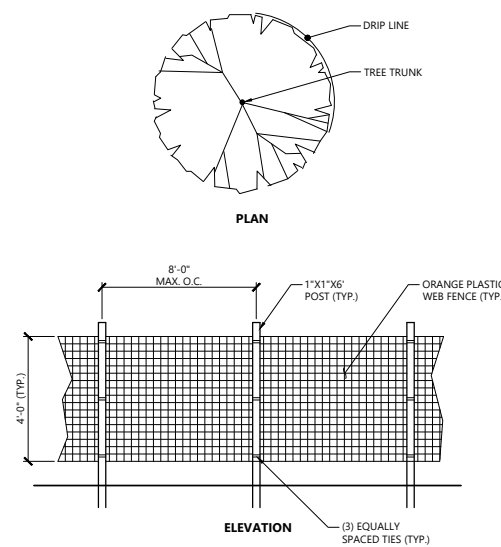
Perennial and Ornamental Grass Planting 1/16
N.T.S. Source: VHB LD_618



NOTES

1. LOOSEN ROOTS AT THE OUTER EDGE OF ROOTBALL OF CONTAINER GROWN SHRUBS.

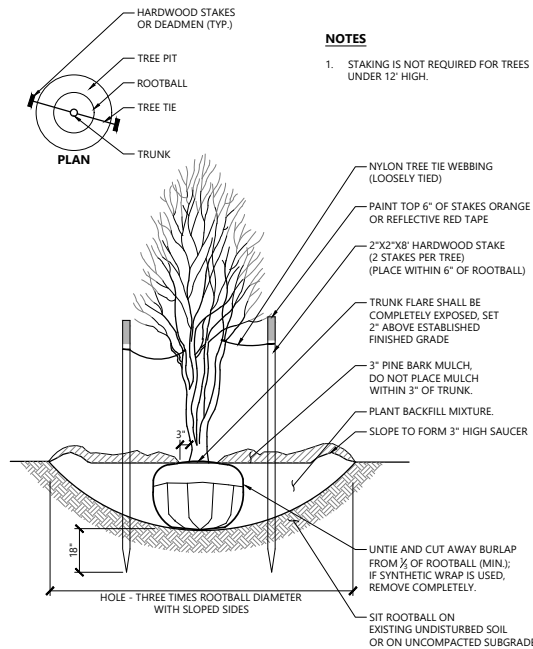
Shrub Bed Planting 1/16
N.T.S. Source: VHB LD_601



NOTES

1. INSTALL TREE PROTECTION FENCE AT THE DRIP LINE OF EXISTING TREES TO REMAIN.

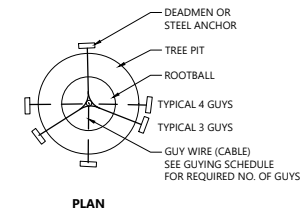
Tree Protection Fence 1/16
N.T.S. Source: VHB LD_610



NOTES

1. STAKING IS NOT REQUIRED FOR TREES UNDER 12" HIGH.

Multistem Tree Planting 1/16
N.T.S. Source: VHB LD_606



NOTES

1. USE GUYING SCHEDULE BELOW FOR DECIDUOUS AND EVERGREEN TREES OVER 4" CALIPER.

TREE CALIPER	4"-6"	6"-8"	8"-10"	10"-12"
TURNBUCKLE (GALVANIZED)	3/8" X 4-1/2"	3/8" X 4-1/2"	3/8" X 6"	3/8" X 8"
# GUYS REQ'D	3	3	4	4
WIRE OR CABLE	3/16" DIA.	3/16" DIA.	3/16" DIA.	3/16" DIA.
DEADMEN SIZE	4" DIA.	6" DIA.	8" DIA.	10" DIA.
DEADMEN LENGTH	24"	24"	36"	48"

Tree Planting (For Trees Over 4" Caliper) 1/16
N.T.S. Source: VHB LD_603

