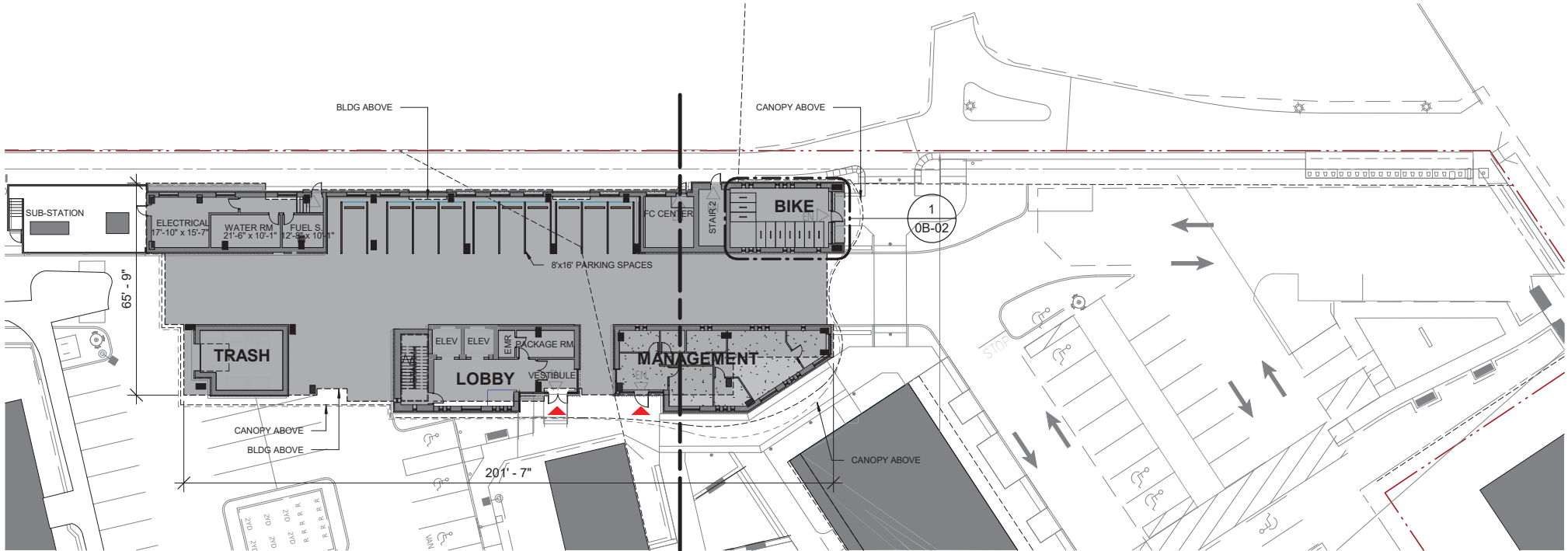


06 Floor Plans BUILDING A GROUND FLOOR PLAN



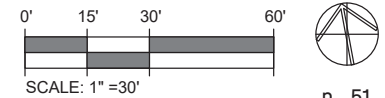
06 Floor Plans BUILDING A TYPICAL FLOOR PLAN



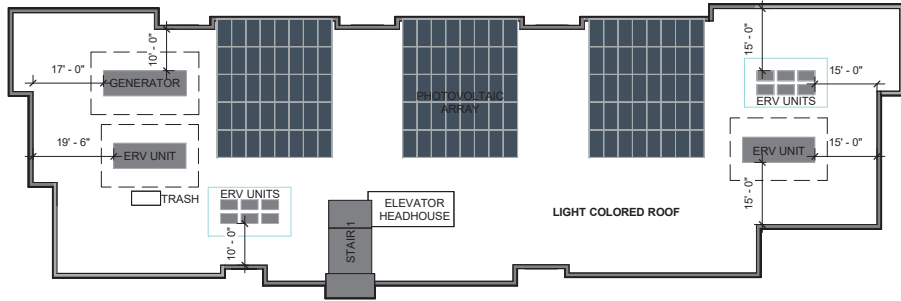
TOTAL UNIT COUNT FOR BOTH BUILDINGS 'A' & 'B'

LEVEL	STUDIOS	1 BED	2 BEDS	3 BEDS	4 BEDS	TOTAL P/FLOOR
2	0	6	6	4	1	17
3	0	6	6	4	1	17
4	0	6	6	4	1	17
5	0	6	6	4	1	17
6	0	6	6	4	1	17
7	0	3	3	3	1	10
UNIT RATIOS	33 (35%)	33 (35%)	23 (24%)	6 (6%)		95

BLDG A				BLDG B			
NUMBER OF UNITS PER FLOOR - 10 UNITS				NUMBER OF UNITS PER FLOOR - 7 UNITS			
BREAKDOWN:				BREAKDOWN:			
STUDIO	0	x6	= 0	STUDIO	0	x5	= 0
1-BED	3	x6	= 18	1-BED	3	x5	= 15
2-BED	3	x6	= 18	2-BED	3	x5	= 15
3-BED	3	x6	= 18	3-BED	1	x5	= 5
4-BED	1	x6	= 6	4-BED	0	x5	= 0
10 UNITS X 6 STORIES = 60 UNITS				7 UNITS X 5 STORIES = 35 UNITS			



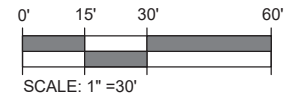
06 Floor Plans BUILDING A 7TH AND ROOF FLOOR PLAN



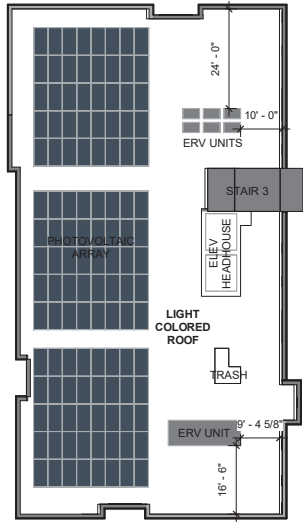
ROOF PLAN



7TH FLOOR



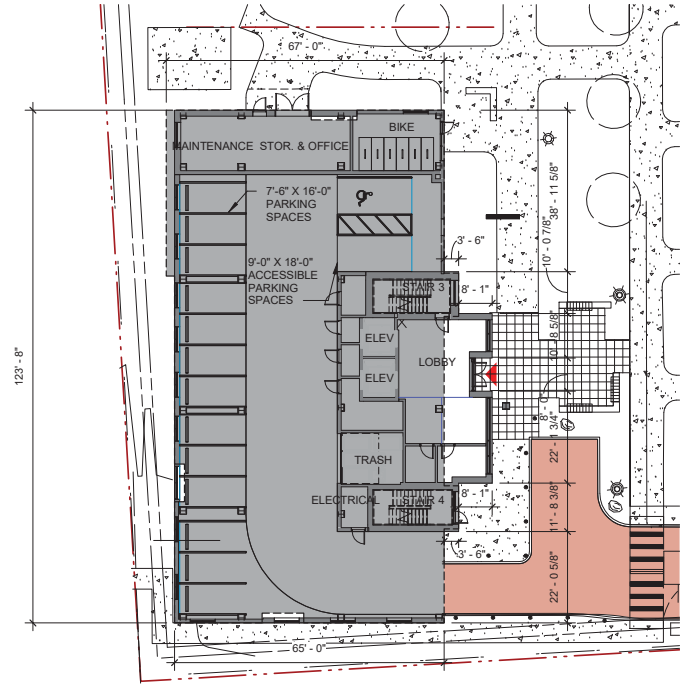
06 Floor Plans BUILDING B GROUND FLOOR , 2ND FLOOR AND ROOF PLAN



ROOF PLAN



2ND FLOOR

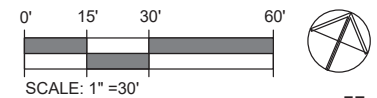


GROUND FLOOR

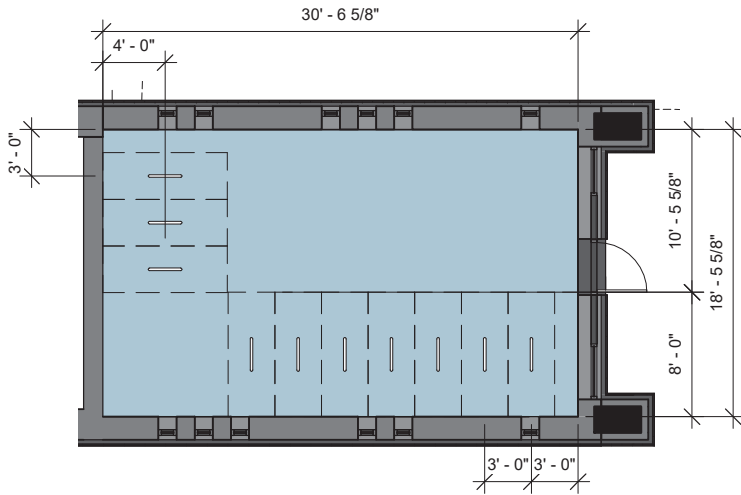
TOTAL UNIT COUNT FOR BOTH BUILDINGS 'A' & 'B'

LEVEL	STUDIOS	1 BED	2 BEDS	3 BEDS	4 BEDS	TOTAL P/FLOOR
2	0	6	6	4	1	17
3	0	6	6	4	1	17
4	0	6	6	4	1	17
5	0	6	6	4	1	17
6	0	6	6	4	1	17
7	0	3	3	3	1	10
UNIT RATIOS	33 (35%)		33 (35%)	23 (24%)	6 (6%)	95

BLDG A	BLDG B
NUMBER OF UNITS PER FLOOR - 10 UNITS	NUMBER OF UNITS PER FLOOR - 7 UNITS
BREAKDOWN:	BREAKDOWN:
STUDIO 0 x6 = 0	STUDIO 0 x5 = 0
1-BED 3 x6 = 18	1-BED 3 x5 = 15
2-BED 3 x6 = 18	2-BED 3 x5 = 15
3-BED 3 x6 = 18	3-BED 1 x5 = 5
4-BED 1 x6 = 6	4-BED 0 x5 = 0
10 UNITS X 6 STORIES = 60 UNITS	7 UNITS X 5 STORIES = 35 UNITS

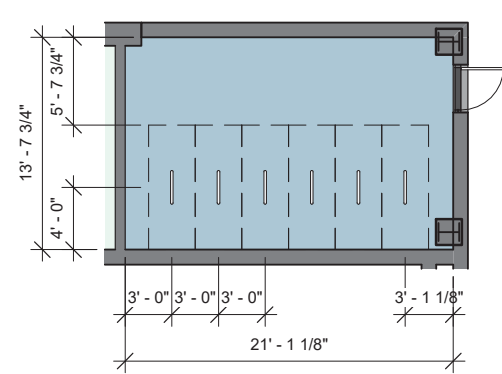


06 Floor Plans BUILDINGS A & B BIKE ROOMS



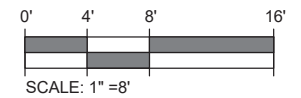
BUILDING A - BIKE ROOM

SCALE: 1/8" = 1'-0"



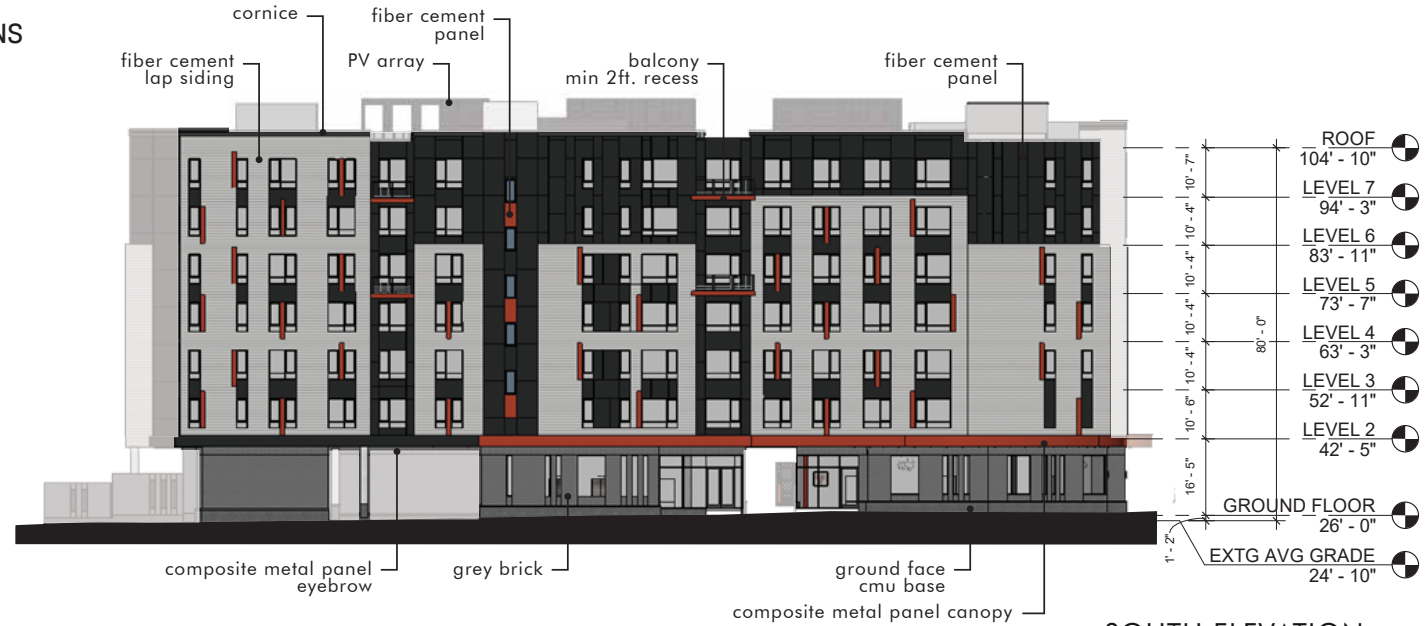
BUILDING B - BIKE ROOM

SCALE: 1/8" = 1'-0"



07 Elevations & Sections BUILDING A ELEVATIONS

AWNING & FIXED WINDOWS - TYPICAL
 VLT (Visible Light Transmittance): 0.58
 VLR (Visible Light Reflectance): 0.13
 > 20% glazing ratio



SOUTH ELEVATION
SCALE 1:30



MATERIAL PALETTE



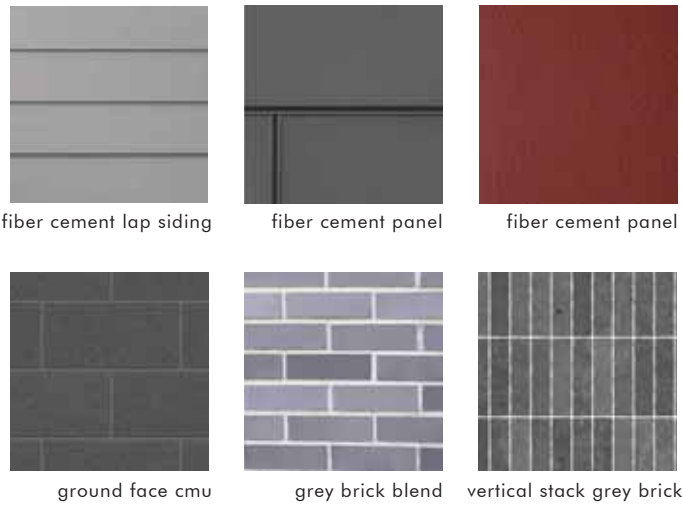
WEST ELEVATION
SCALE 1:30

07 Elevations & Sections BUILDING A ELEVATIONS

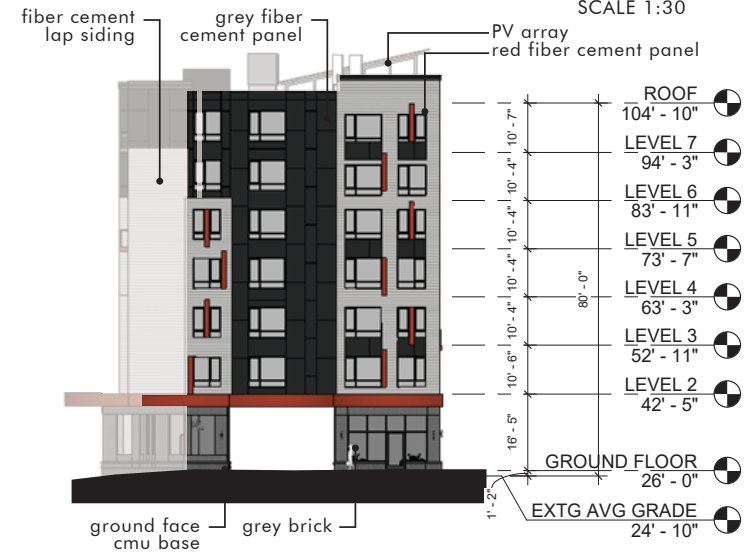
AWNING & FIXED WINDOWS - TYPICAL
 VLT (Visible Light Transmittance): 0.58
 VLR (Visible Light Reflectance): 0.13
 > 20% glazing ratio



NORTH ELEVATION
SCALE 1:30



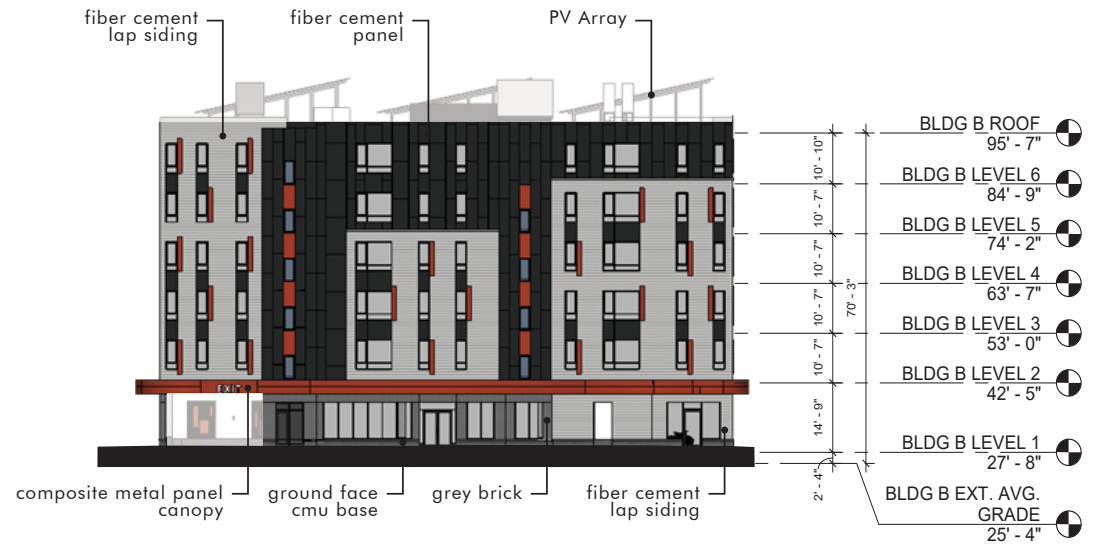
MATERIAL PALETTE



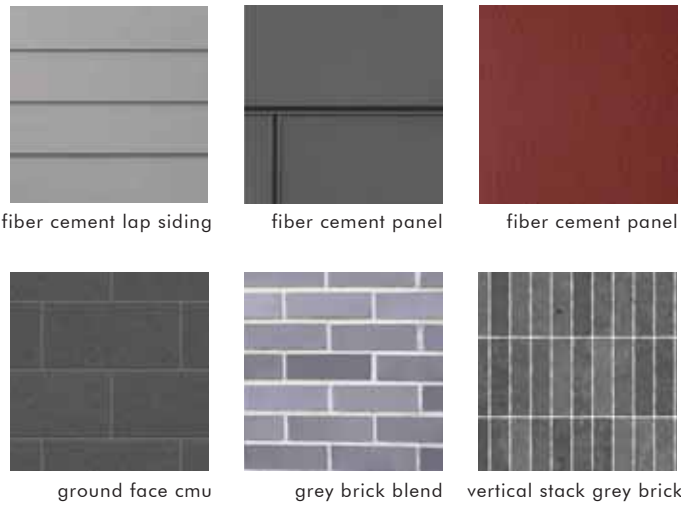
EAST ELEVATION
SCALE 1:30

07 Elevations & Sections BUILDING B ELEVATIONS

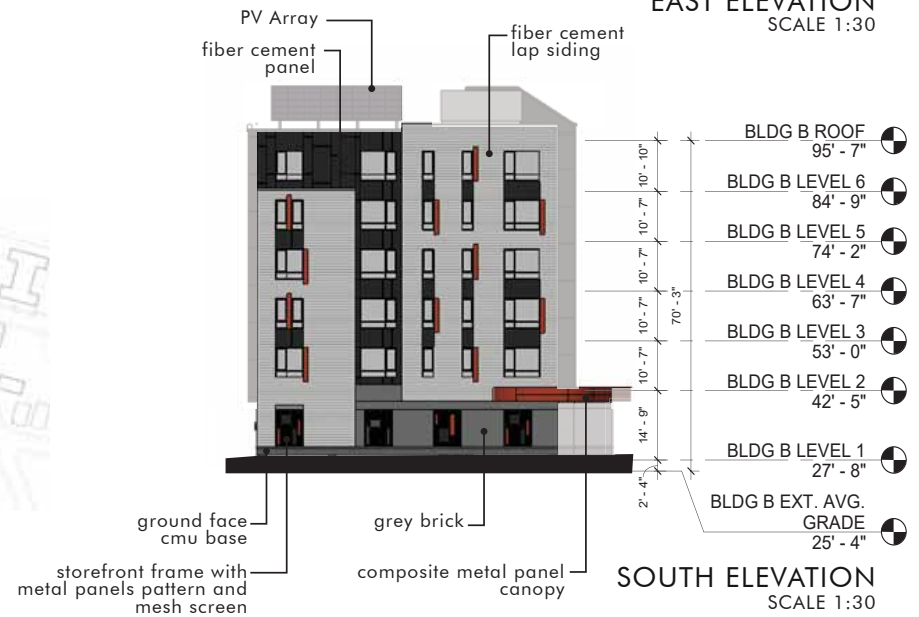
AWNING & FIXED WINDOWS - TYPICAL
 VLT (Visible Light Transmittance): 0.58
 VLR (Visible Light Reflectance): 0.13
 > 20% glazing ratio



EAST ELEVATION
SCALE 1:30



MATERIAL PALETTE



SOUTH ELEVATION
SCALE 1:30

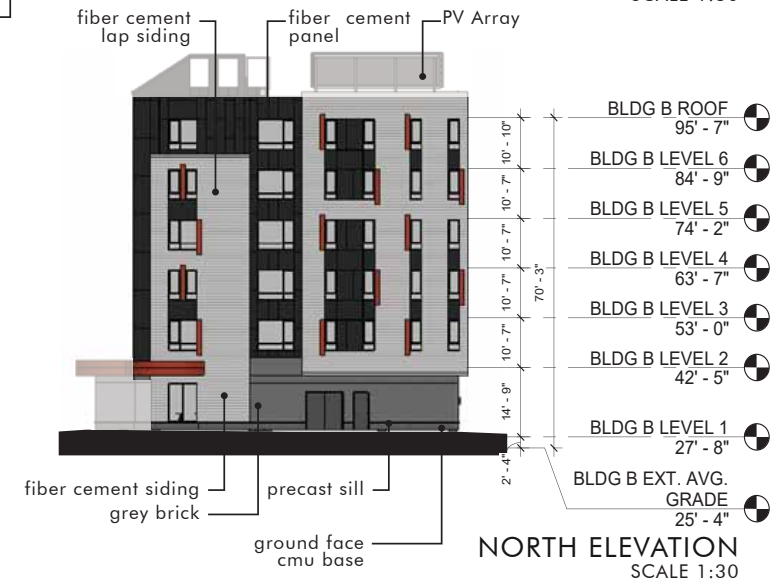
07 Elevations & Sections BUILDING B ELEVATIONS

AWNING & FIXED WINDOWS - TYPICAL

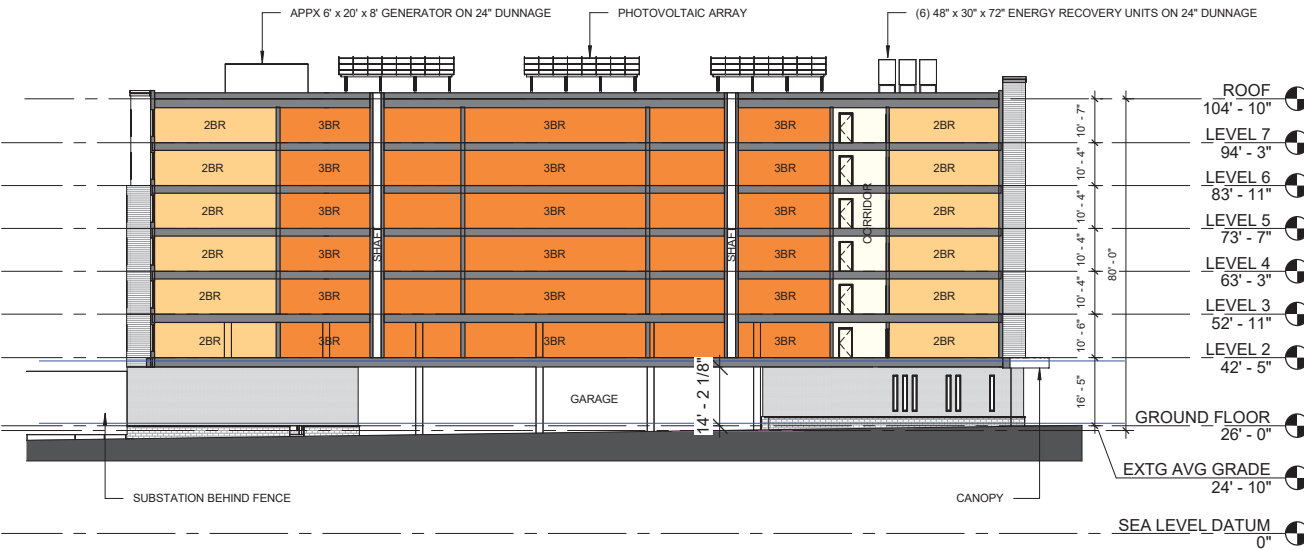
VLT (Visible Light Transmittance): 0.58

VLR (Visible Light Reflectance): 0.13

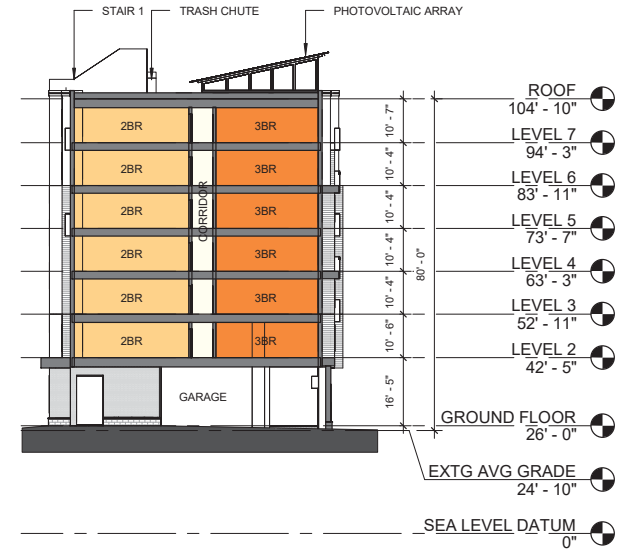
> 20% glazing ratio



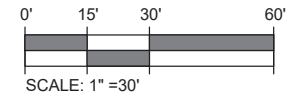
07 Elevations & Sections BLDG A SECTIONS



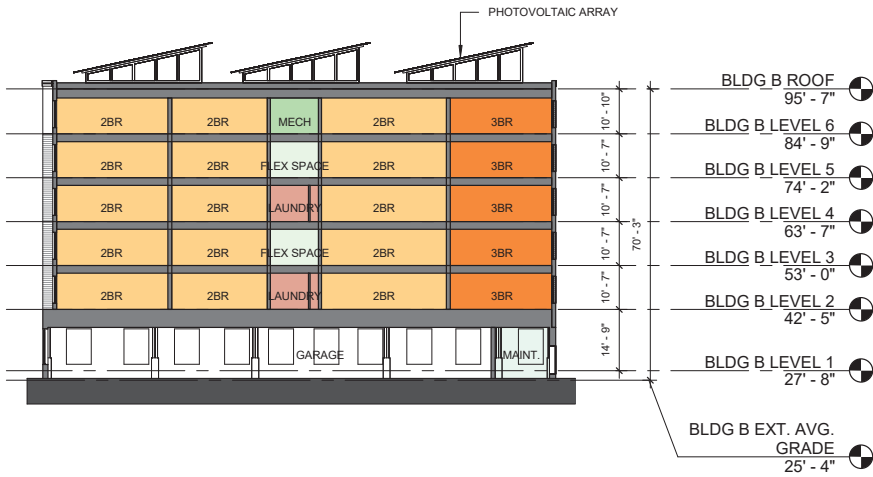
BLDG A - LONG SECTION



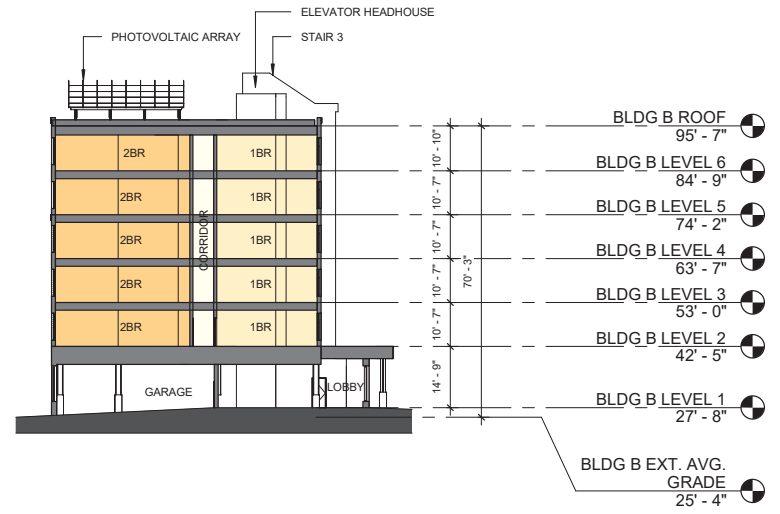
BLDG A - SHORT SECTION



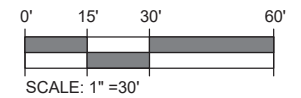
07 Elevations & Sections BUILDING B SECTIONS



BLDG B - LONG SECTION



BLDG B - SHORT SECTION



BUILDING A - VIEW FROM RAYMOND ST





08 Proposed Views

CORNICE
RED ACCENT FIBER CEMENT PANEL
FIBER CEMENT LAP SIDING
FIBER CEMENT PANEL

BUILDING A - VIEW FROM CAMBRIDGE CITY PARK



RED COMPOSITE METAL CANOPY



08 Proposed Views

BUILDING A - VIEW AT WOONERF

- RED ACCENT FIBER CEMENT PANEL
- FIBER CEMENT LAP SIDING
- GREY FIBER CEMENT PANEL



- BIKE ROOM
- GREY BRICK
- LIGHT SCONCES
- GROUND FACE CMU BASE
- DOUBLE BRICK HEADER
- LOW WALL SEPARATES PEDESTRIANS FROM VEHICLES
- BOLLARDS FOR PEDESTRIANS SAFETY
- PEDESTRIAN CROSSING



08 Proposed Views

BUILDING A - GARAGE ENTRY



SPOT LIGHTS TO MARK PEDESTRIAN PATH
LINEAR DIRECTIONAL LIGHTS @ GARAGE ENTRY

PEDESTRIAN CROSSING

GREY BRICK

GROUND FACE CMU BASE

DOUBLE BRICK HEADER

LOW WALL SEPARATES PEDESTRIANS FROM VEHICLES

BOLLARDS FOR PEDESTRIANS SAFETY

08 Proposed Views

BUILDING A - INSIDE GARAGE

DOUBLE BRICK HEADER
LINEAR LIGHTING PERPENDICULAR TO DRIVING
DIRECTION TO VISUALLY SLOW DOWN TRAFFIC



PEDESTRIAN CROSSING

SPEED BUMP

GROUND FACE CMU BASE

BUILDING A - VIEW BEFORE YERXA UNDERPASS





BLDG 21

PLAZA AT THE END OF THE YERXA UNDERPASS

BUILDING A - VIEW AFTER YERXA UNDERPASS





BUILDING A - VIEW FROM NORTH WEST





BUILDING A - VIEW FROM SOUTH WEST



- CORNICE
- FIBER CEMENT PANEL
- AWNING WINDOW (TYPICAL)
- FIBER CEMENT LAP SIDING
- FIBER CEMENT PANEL
- BALCONY MIN 2FT. RECES WITH METAL MESH RAILING

DUMPSTER ENCLOSURE

GREY BRICK
LOBBY ENTRANCE

BUILDING A - VIEW OF BLDG A PLAZA



BUILDING A - VIEW TOWARD BLDG A PLAZA



DOUBLE HEADER VERTICAL
GREY BRICK
COMPOSITE METAL
PANEL CANOPY

EXISTING BLDG 21

GROUND FACE CMU BASE



NEW PLAYGROUND

BUILDING B - VIEW THROUGH S-N CORRIDOR



RED ACCENT FIBER CEMENT
AWNING WINDOW (TYPICAL)
FIBER CEMENT PANEL
FIBER CEMENT LAP SIDING

EXISTING BLDG 21

61'5"

BLDG A

COMPOSITE METAL PANEL CANOPY

PARKING AND TURN-AROUND AREA



FIBER CEMENT PANEL
PV ARRAY
RED FIBER CEMENT PANEL
FIBER CEMENT LAP SIDING

BLDG A

BLDG 21

GARAGE STOREFRONT FRAMES WITH METAL
PANELS PATTERN AND MESH SCREENS





BUILDING B - VIEW FROM SOUTH EAST







08 Proposed Views

AERIAL FROM NORTH





09 Shadow Studies - June

 NEW BUILDING FOOTPRINT  EXISTING SHADOWS  NEW SHADOW  NEW SHADOW OVER EXISTING SHADOW

EXISTING SITE



9AM



12PM



5:30PM

PROPOSED SITE



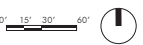
9AM



12PM



5:30PM



09 Shadow Studies - September

 NEW BUILDING FOOTPRINT  EXISTING SHADOWS  NEW SHADOW  NEW SHADOW OVER EXISTING SHADOW

EXISTING SITE



9AM



12PM



430PM

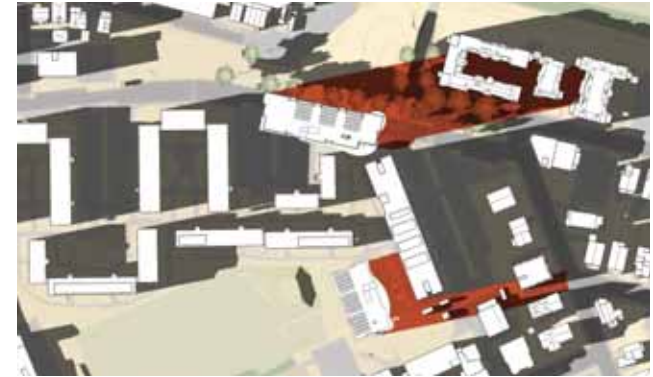
PROPOSED SITE



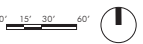
9AM



12PM



430PM



09 Shadow Studies - December

 NEW BUILDING FOOTPRINT  EXISTING SHADOWS  NEW SHADOW  NEW SHADOW OVER EXISTING SHADOW

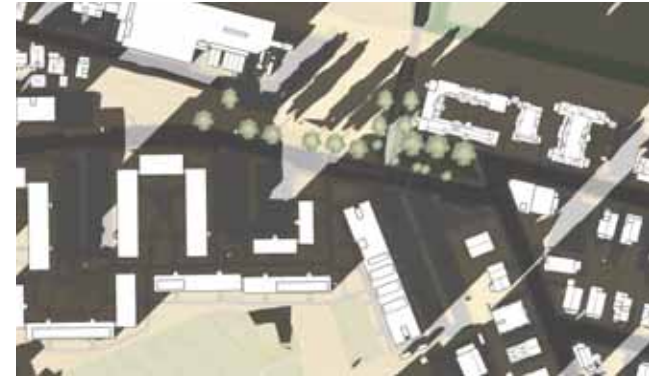
EXISTING SITE



9AM

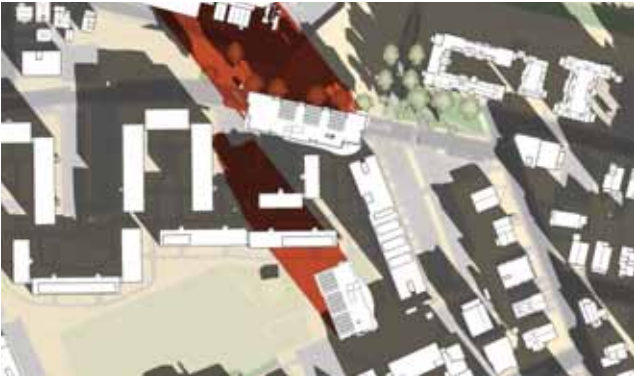


12PM



3PM

PROPOSED SITE



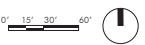
9AM



12PM



3PM



09 Shadow Studies - March & June

MARCH



9AM



12PM



4:30PM

JUNE



9AM



12PM



5:30PM



09 Shadow Studies - September & December

SEPTEMBER



9AM



12PM



4:30PM

DECEMBER



9AM



12PM



3:00PM

