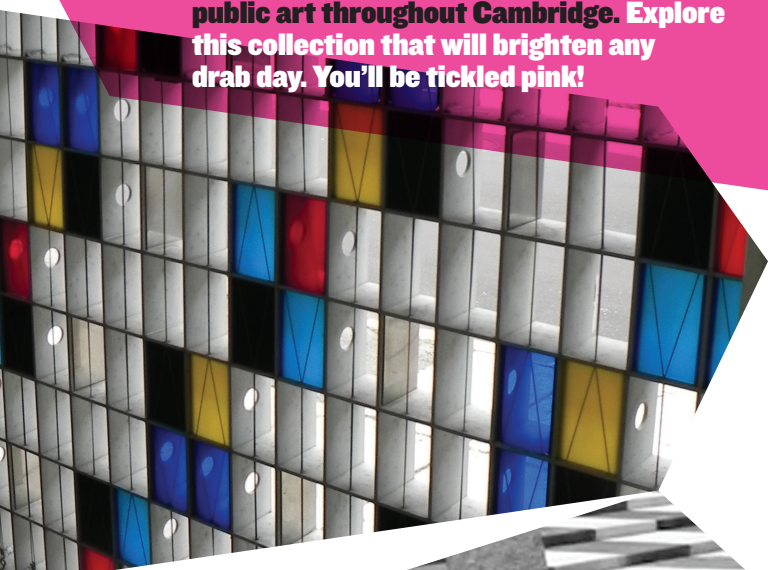


# GET A BLAST OF LOCAL Color

Discover for yourself the vibrant array of public art throughout Cambridge. Explore this collection that will brighten any drab day. You'll be tickled pink!



CAMBRIDGE | PUBLIC  
ARTS | ART

CAMBRIDGE ARTS HAS COMMISSIONED MORE THAN 280 PUBLIC ARTWORKS THAT ENRICH OUR CITY, BASED ON A LONG-STANDING PERCENT-FOR-ART PROGRAM THAT INTEGRATES ART WITH MUNICIPAL CONSTRUCTION PROJECTS. DISCOVER THESE ARTWORKS FOR YOURSELF ON THIS SELF-GUIDED CAMBRIDGE ARTS EXCURSION.

## PORTER SQUARE LANDSCAPE DESIGN

LOCATION: PORTER SQUARE PLAZA, 1931 MASSACHUSETTS AVENUE  
DETAILS: BY TOSHIHIRO KATAYAMA / 2006 / CONCRETE, GRANITE BOULDERS, PAINTED STEEL, STONE WALL, PLANTINGS

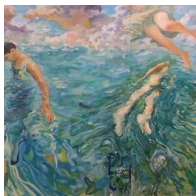
Katayama's graphic use of black and white creates a dynamic visual sweep over the hardscape of Porter Square Plaza, unifying a complex crossroads for shoppers, commuters, students, and tourists. The artist's purposeful placement of trees, boulders, and stone walls adds to the variety of materials and guides movement through the plaza.



## ANXIETY OF BEAUTY

LOCATION: PAINE PARK, INTERSECTION AT AMORY STREET AND ST. MARY ROAD (BACK OF PRIVACY FENCE) DETAILS: BY MELA LYMAN / 2009 / ACRYLIC ON BOARD

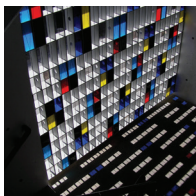
Unlike most muralists who enlarge their image from a smaller drawing, Lyman painted this mural full scale from start to finish, just as she would a studio painting—layer upon layer, sometimes covering what she had painted the day before with a different image. The mural provides an imagined and fluid space of play and water, history, landscape, and mythology.



## DOT MATRIX

LOCATION: GREEN STREET GARAGE (STAIRWELL), CORNER OF PEARL AND GREEN STREETS, CENTRAL SQUARE DETAILS: BY EDWIN ANDREWS / 2004 / PLEXIGLAS, ALUMINUM, CABLE

Charged with keeping this municipal parking garage stairwell open to air and light while providing a sense of protection, Andrews transformed the vertical corner space with playful color. The stairwell glows at night and, during the day the aluminum and acrylic color pattern casts spots of color and shadow throughout the interior.



## THE LIBRARIAN SPEAKS

LOCATION: CAMBRIDGE MAIN PUBLIC LIBRARY, 449 BROADWAY (ENTRANCE TO UNDERGROUND PARKING GARAGE) DETAILS: BY LIAM GILLICK / 2009 / PAINTED ALUMINUM

A library is a repository of human knowledge, creativity, and enterprise. Gillick selected words representing a diverse set of cultural topics, and then used color to shift our attention away from the expected reading of the words, inviting us to engage with the language and typography.

