

CAMBRIDGE HISTORICAL COMMISSION  
**DEMOLITION REVIEW**  
 13-15 VINCENT ST, CAMBRIDGE, MA 02140



PETER QUINN ARCHITECTS LLC  
 259 ELM STREET, SUITE 301  
 SOMERVILLE, MA 02144  
 PH 617-354-3989



VINCENT STREET ELEVATION

LIST OF DRAWINGS	HISTORICAL 13 APR 2018	HISTORICAL REV-1 23 MAY 2018	HISTORICAL REV-2 17 AUG 2018
<b>GENERAL</b>			
T1 TITLE SHEET	X	X	X
EXISTING CONDITIONS PLOT PLAN	X	X	X
ILLUSTRATIVE LANDSCAPE PLAN	X	X	

ARCHITECTURAL			
A-0 SITE PLAN	X	X	X
A-1 BASEMENT PLAN	X	X	X
A-2 FIRST FLOOR PLAN	X	X	X
A-3 SECOND FLOOR PLAN	X	X	X
A-4 THIRD FLOOR PLAN	X	X	X
A-5 ROOF PLAN		X	
A-6 VINCENT STREET ELEVATION	X	X	X
A-7 DRIVEWAY ELEVATION	X	X	X
A-8 REAR ELEVATION	X	X	
A-9 LEFT ELEVATION	X	X	
EC1 EXISTING CONDITION PHOTOS	X	X	X

SEAL

CONSULTANT

PROJECT  
**DEVELOPMENT AT**  
 13-15 VINCENT STREET  
 CAMBRIDGE, MA 02140

PREPARED FOR  
**SAMUEL HAYES**  
 11 ELLSWORTH AVE, REAR  
 CAMBRIDGE, MA 02139

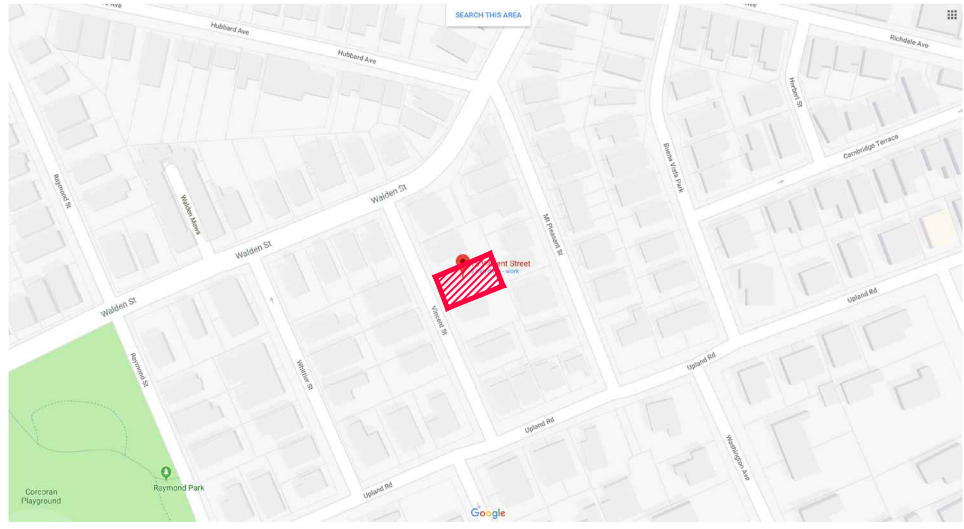
DRAWING TITLE  
**TITLE SHEET**

SCALE AS NOTED

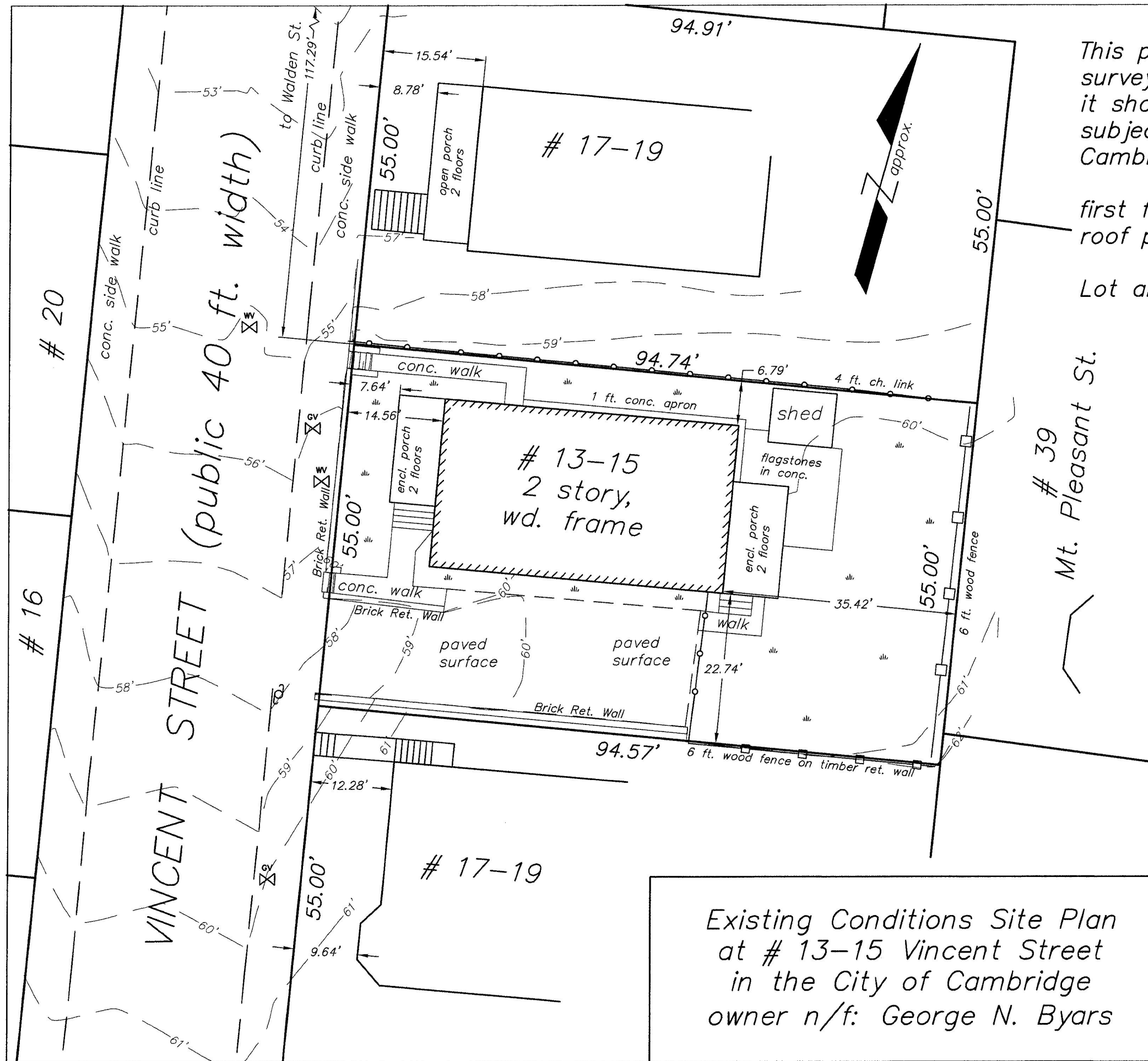
REVISION	DATE
HIST REV 2	17 AUG 2018
HIST REV 1	23 MAY 2018
HISTORICAL	13 APR 2018
DRAWN BY YC	REVIEWED BY PQ

SHEET  
**T-1**

PREPARED BY:  
 ARCHITECT  
**PETER QUINN ARCHITECTS LLC**  
 259 ELM ST, STE 301  
 SOMERVILLE, MA 02144  
 PH (617) 354 3989



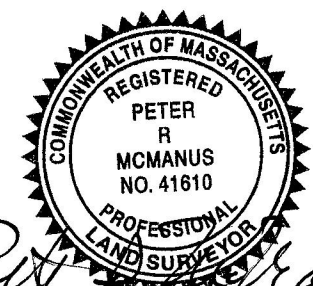
LOCUS PLAN



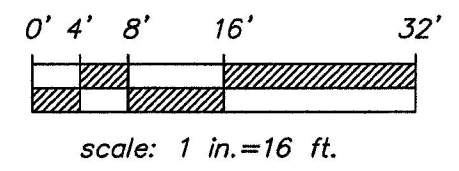
This plan is based on an instrument survey performed on March 23, 2018, it shows the existing conditions at the subject parcel. Contours are based on Cambridge city datum.

first floor elev. = 63.10 ft.  
 roof peak elev. = 90.10 ft.

Lot area = 5,206 sf



*Peter R. McManus* 4-11-18  
 Peter R. McManus PLS



Existing Conditions Site Plan  
 at # 13-15 Vincent Street  
 in the City of Cambridge  
 owner n/f: George N. Byars

TERRA NOVA SURVEY CONSULTANTS  
 1685 South Street  
 Bridgewater, MA 02324  
 Date: April 10, 2018  
 Scale: 1 in. = 16 ft.



SEAL

CONSULTANT

PROJECT

**DEVELOPMENT AT**

13-15 VINCENT STREET  
CAMBRIDGE, MA 02140

PREPARED FOR

SAMUEL HAYES

11 ELLSWORTH AVE, REAR  
CAMBRIDGE, MA 02139

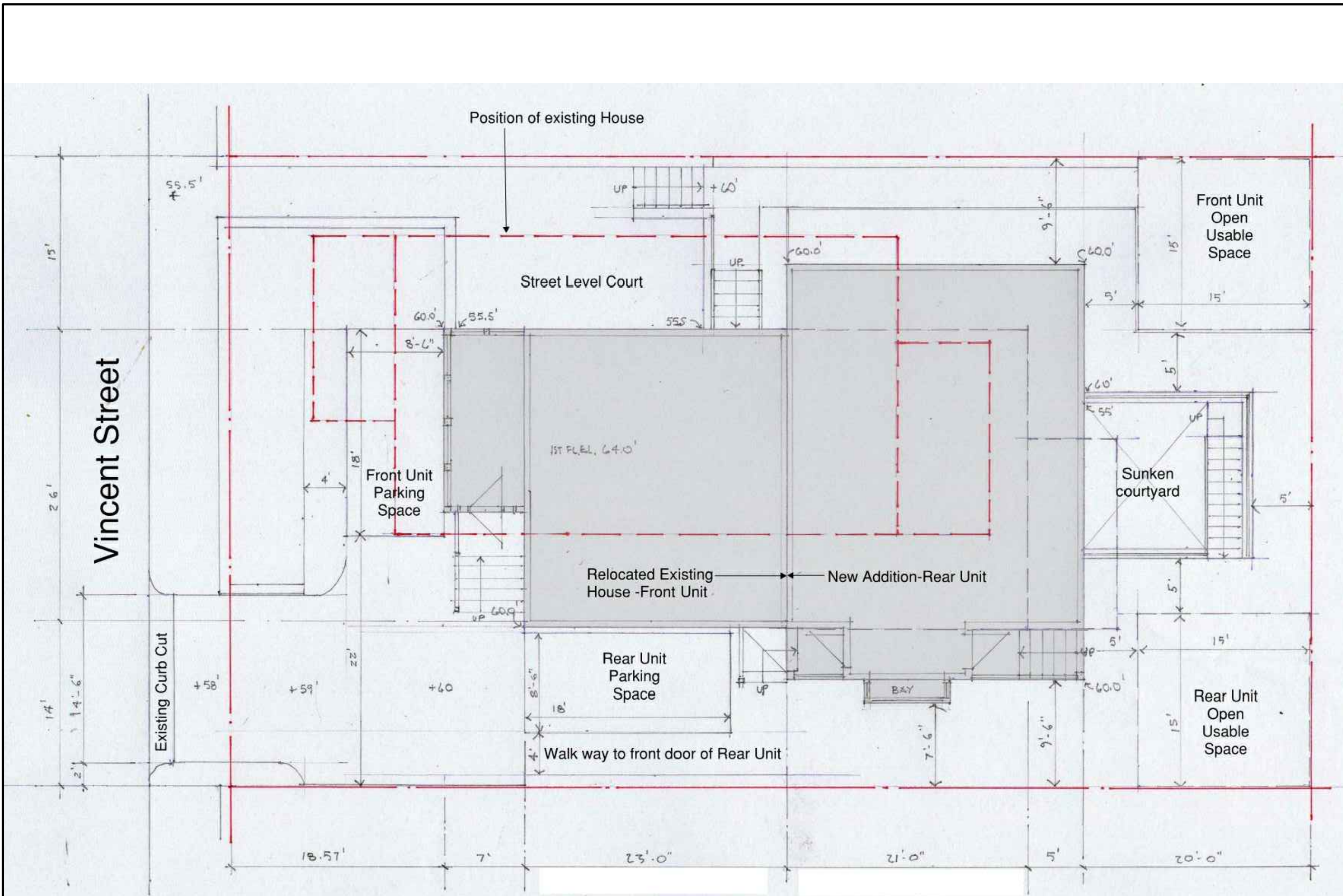
DRAWING TITLE

**SITE PLAN**

SCALE AS NOTED

REVISION	DATE
HIST REV 2	17 AUG 2018
HIST REV 1	23 MAY 2018
HISTORICAL	13 APR 2018
DRAWN BY MN / YC	REVIEWED BY PQ

**A-0**



**1 SITE PLAN**  
SCALE: 1/8" = 1'-0"

SEAL

CONSULTANT

PROJECT  
**DEVELOPMENT AT**  
13-15 VINCENT STREET  
CAMBRIDGE, MA 02140

PREPARED FOR  
**SAMUEL HAYES**

11 ELLSWORTH AVE, REAR  
CAMBRIDGE, MA 02139

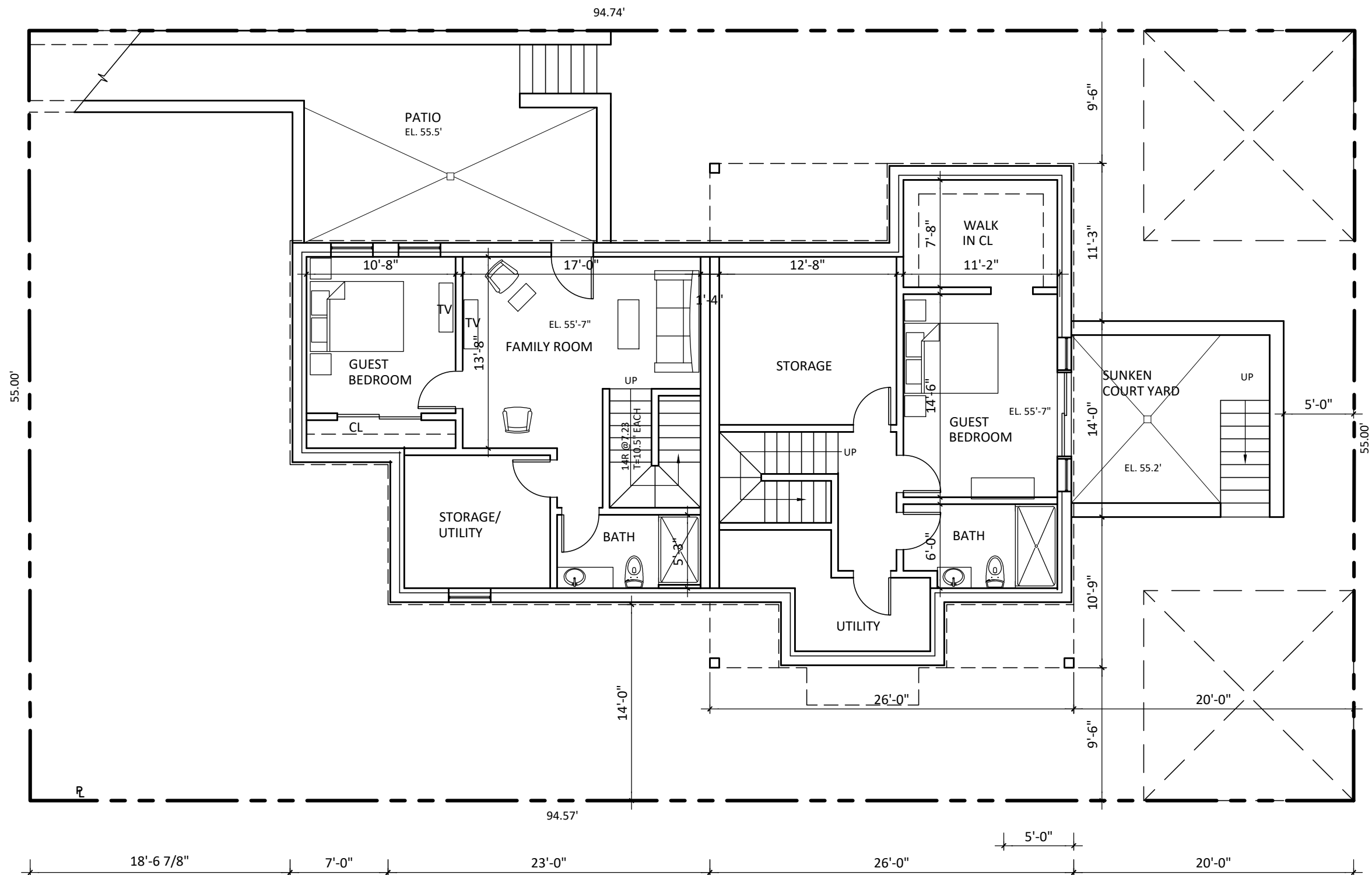
DRAWING TITLE  
**BASEMENT PLAN**

SCALE AS NOTED

REVISION	DATE
HIST REV 2	17 AUG 2018
HIST REV 1	23 MAY 2018
HISTORICAL	13 APR 2018
DRAWN BY MN / YC	REVIEWED BY PQ

SHEET

**A-1**



**1 BASEMENT PLAN**  
SCALE: 1/8" = 1'-0"

SEAL

CONSULTANT

PROJECT  
**DEVELOPMENT AT**  
 13-15 VINCENT STREET  
 CAMBRIDGE, MA 02140

PREPARED FOR  
**SAMUEL HAYES**

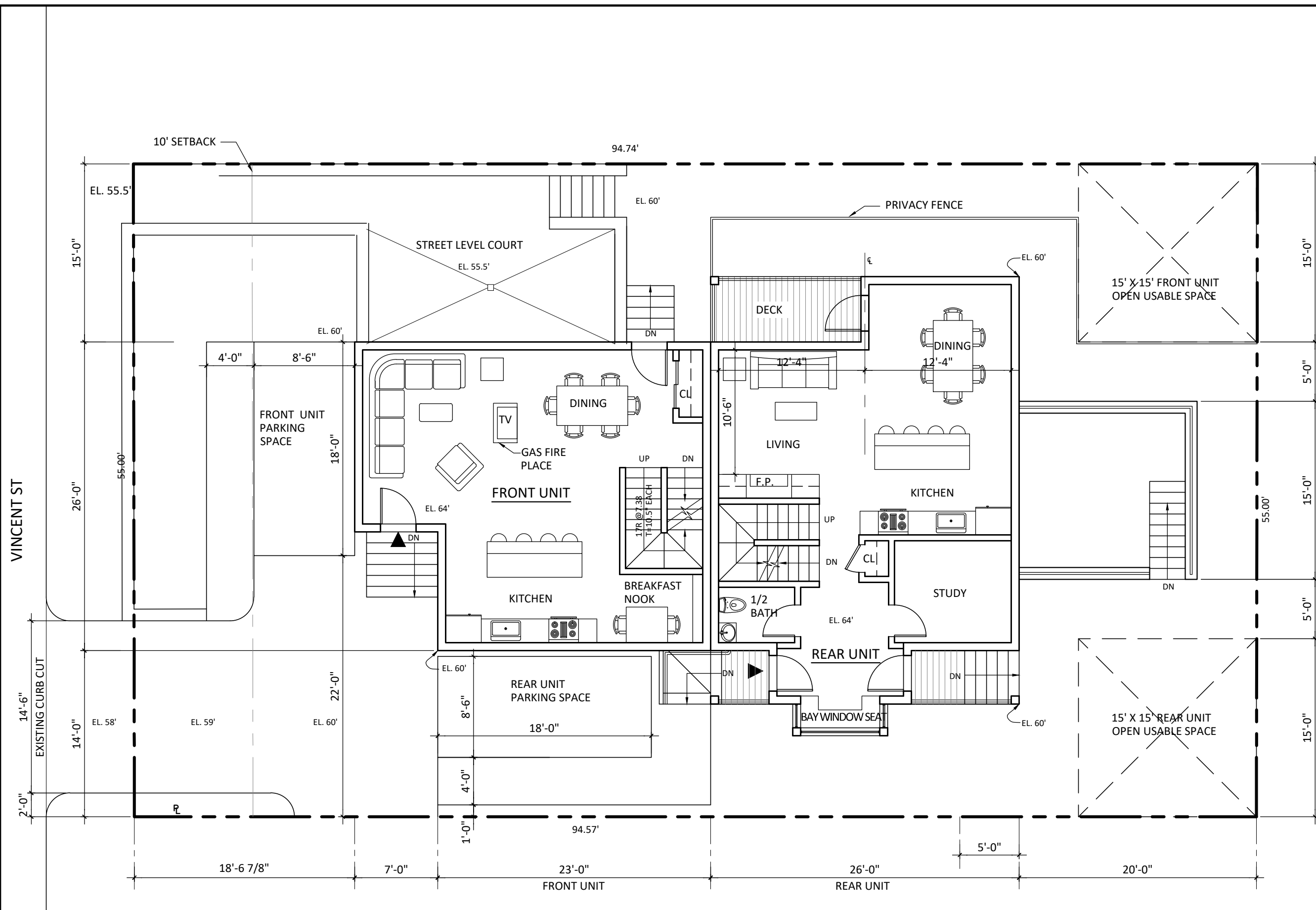
11 ELLSWORTH AVE, REAR  
 CAMBRIDGE, MA 02139

DRAWING TITLE  
**FIRST FLOOR PLAN**

SCALE AS NOTED

REVISION	DATE
HIST REV 2	17 AUG 2018
HIST REV 1	23 MAY 2018
HISTORICAL	13 APR 2018
DRAWN BY MN / YC	REVIEWED BY PQ

**A-2**



**1 FIRST FLOOR PLAN**  
 SCALE: 1/8" = 1'-0"

SEAL

CONSULTANT

PROJECT  
**DEVELOPMENT AT**  
 13-15 VINCENT STREET  
 CAMBRIDGE, MA 02140

PREPARED FOR  
**SAMUEL HAYES**  
 11 ELLSWORTH AVE, REAR  
 CAMBRIDGE, MA 02139

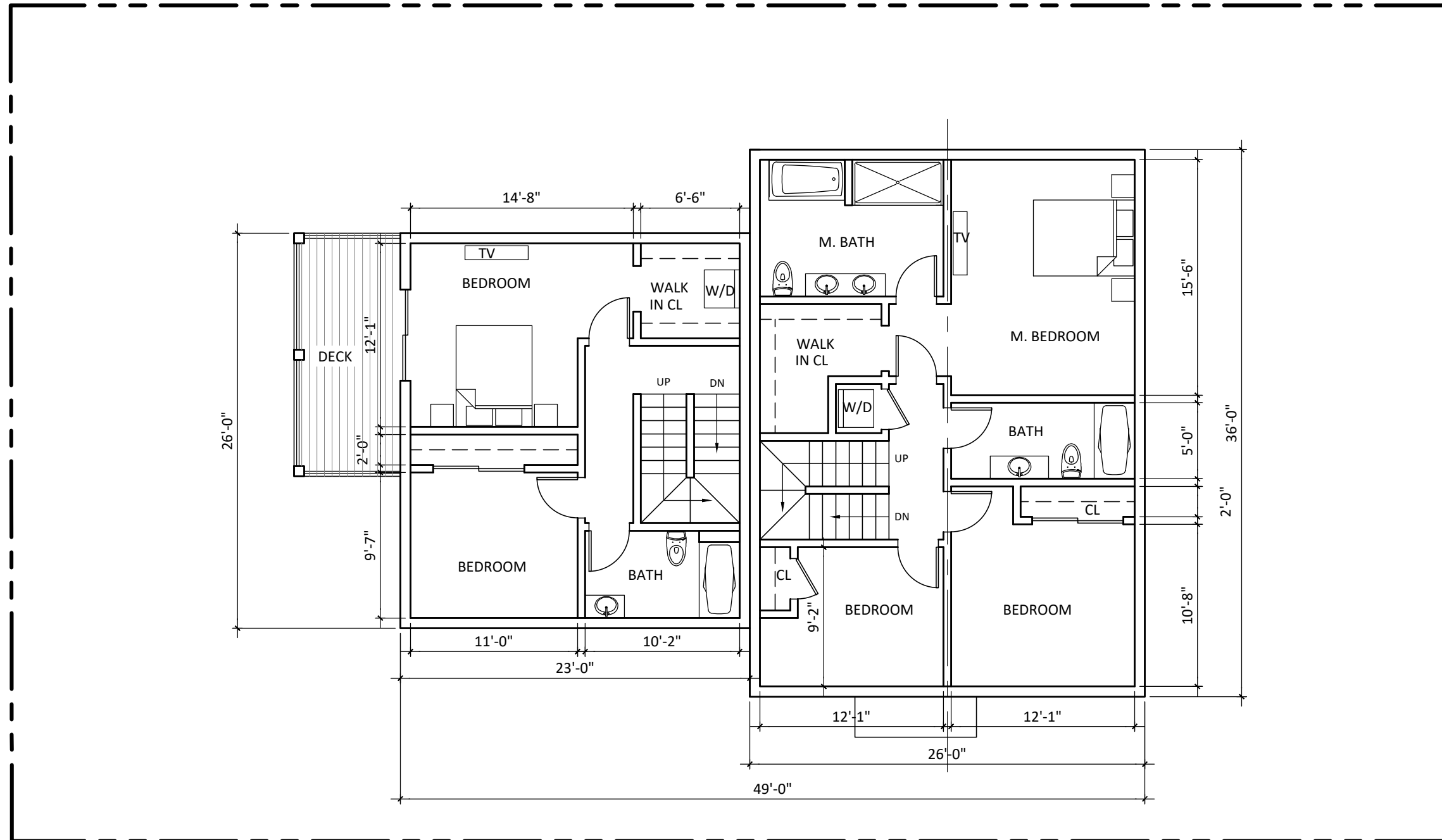
DRAWING TITLE  
**SECOND FLOOR PLAN**

SCALE AS NOTED

REVISION	DATE
HIST REV 2	17 AUG 2018
HIST REV 1	23 MAY 2018
HISTORICAL	13 APR 2018
DRAWN BY MN / YC	REVIEWED BY PQ

SHEET

**A-3**



**1 SECOND FLOOR PLAN**  
 SCALE: 1/8" = 1'-0"

SEAL

CONSULTANT

PROJECT

**DEVELOPMENT AT**

13-15 VINCENT STREET  
CAMBRIDGE, MA 02140

PREPARED FOR

**SAMUEL HAYES**

11 ELLSWORTH AVE, REAR  
CAMBRIDGE, MA 02139

DRAWING TITLE

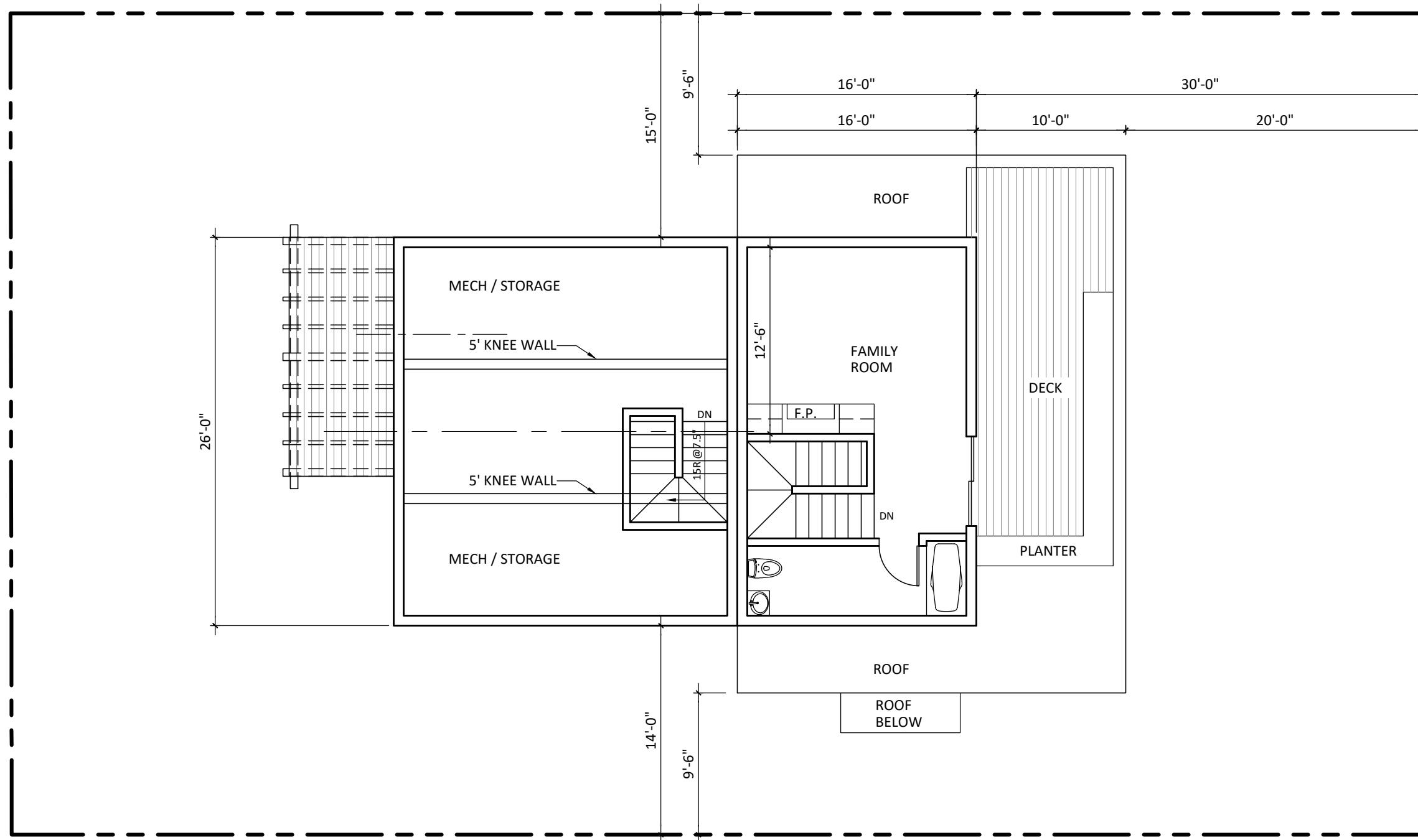
**THIRD FLOOR PLAN**

SCALE AS NOTED

REVISION	DATE
HIST REV 2	17 AUG 2018
HIST REV 1	23 MAY 2018
HISTORICAL	13 APR 2018
DRAWN BY MN / YC	REVIEWED BY PQ

SHEET

**A-4**



**1 THIRD FLOOR PLAN**  
SCALE: 1/8" = 1'-0"



SEAL

CONSULTANT

PROJECT  
**DEVELOPMENT AT**  
 13-15 VINCENT STREET  
 CAMBRIDGE, MA 02140

PREPARED FOR  
**SAMUEL HAYES**

11 ELLSWORTH AVE, REAR  
 CAMBRIDGE, MA 02139

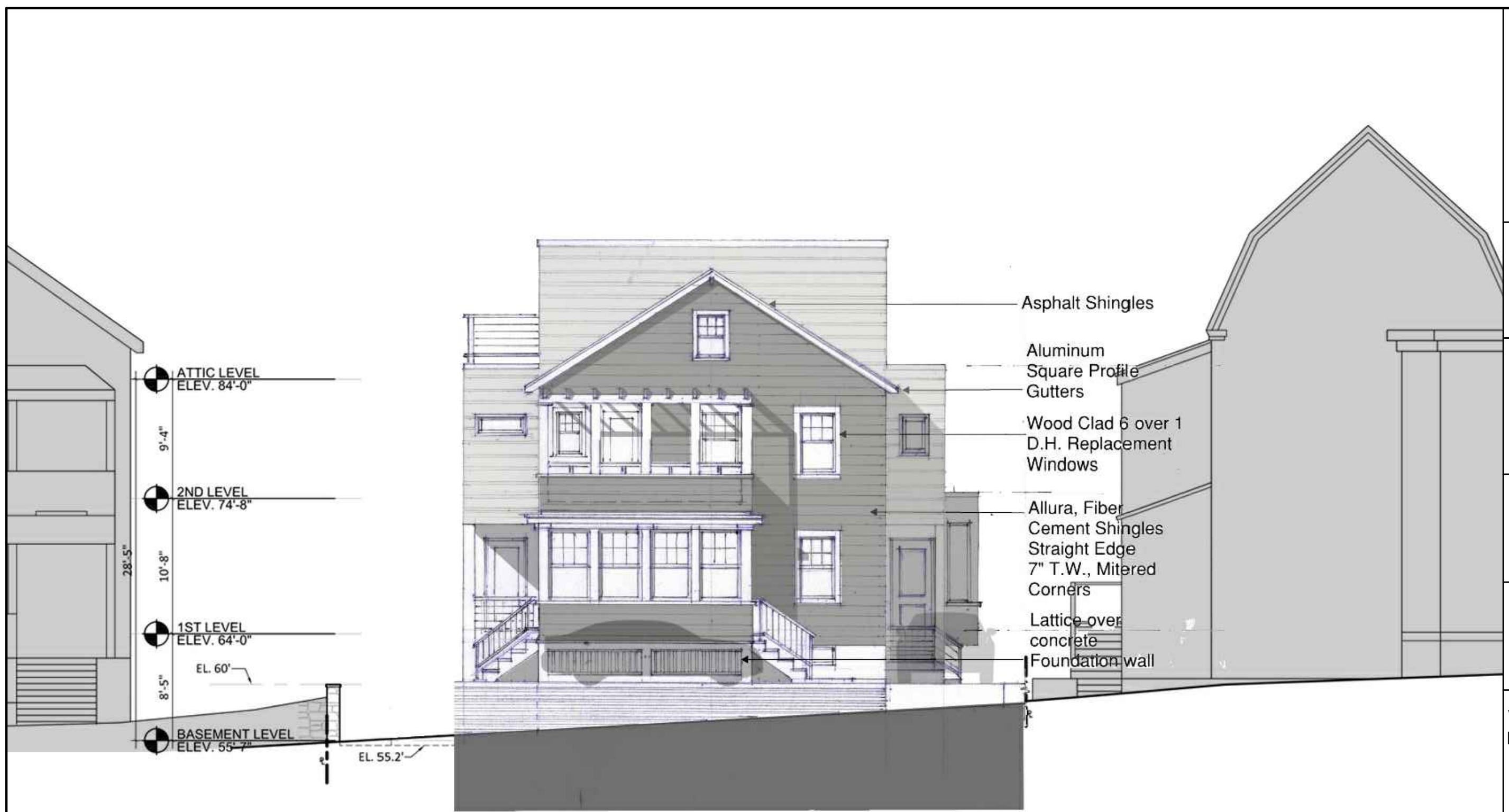
DRAWING TITLE  
**VINCENT ST ELEVATION**

SCALE AS NOTED

REVISION	DATE
HIST REV 2	17 AUG 2018
HIST REV 1	23 MAY 2018
HISTORICAL	13 APR 2018
DRAWN BY MN / YC	REVIEWED BY PQ

SHEET

**A-6**



**1 VINCENT ST ELEVATION (FRONT)**  
 SCALE: 1/8" = 1'-0" WEST



SEAL

CONSULTANT

PROJECT

**DEVELOPMENT AT**

13-15 VINCENT STREET  
CAMBRIDGE, MA 02140

PREPARED FOR

**SAMUEL HAYES**

11 ELLSWORTH AVE, REAR  
CAMBRIDGE, MA 02139

DRAWING TITLE

**RIGHT ELEVATION**

SCALE AS NOTED

REVISION	DATE
HIST REV 2	17 AUG 2018
HIST REV 1	23 MAY 2018
HISTORICAL	13 APR 2018
DRAWN BY MN / YC	REVIEWED BY PQ

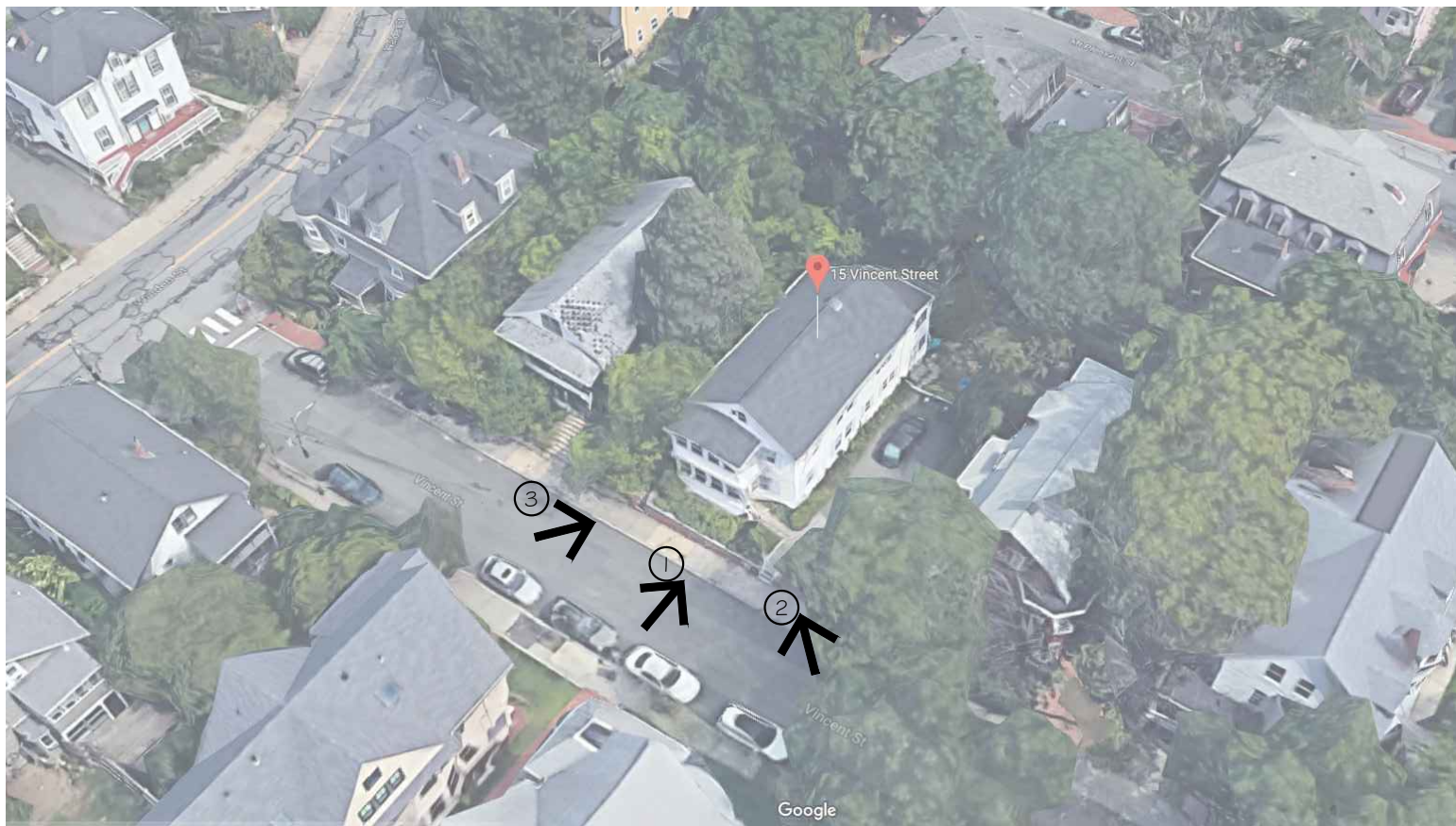
SHEET

**A-7**



**1 DRIVEWAY ELEVATION (RIGHT)**  
SCALE: 1/8" = 1'-0" SOUTH





AERIAL VIEW



1.



2.



3.



13-15 Vincent Street, June 2013.

Assessing Dept. photo



13-15 Vincent Street, 1973

CHC photo

**PETER QUINN ARCHITECTS**

ARCHITECTURE  
PLANNING  
COMMUNITY DESIGN

PETER QUINN ARCHITECTS LLC  
259 ELM STREET, SUITE 301  
SOMERVILLE, MA 02144  
PH 617-354-3989

SEAL

CONSULTANT

PROJECT  
**DEVELOPMENT AT**

13-15 VINCENT STREET  
CAMBRIDGE, MA 02140

PREPARED FOR

**SAMUEL HAYES**

11 ELLSWORTH AVE, REAR  
CAMBRIDGE, MA 02139

DRAWING TITLE

**EXISTING PHOTOS**

SCALE AS NOTED

REVISION	DATE
HIST REV 2	17 AUG 2018
HIST REV 1	23 MAY 2018
HISTORICAL	13 APR 2018
DRAWN BY YC	REVIEWED BY PQ

HIST REV 2 17 AUG 2018

HIST REV 1 23 MAY 2018

HISTORICAL 13 APR 2018

DRAWN BY YC REVIEWED BY PQ

SHEET

**EC-1**