

RECEIVED

OCT 09 2017

CAMBRIDGE HISTORICAL COMMISSION



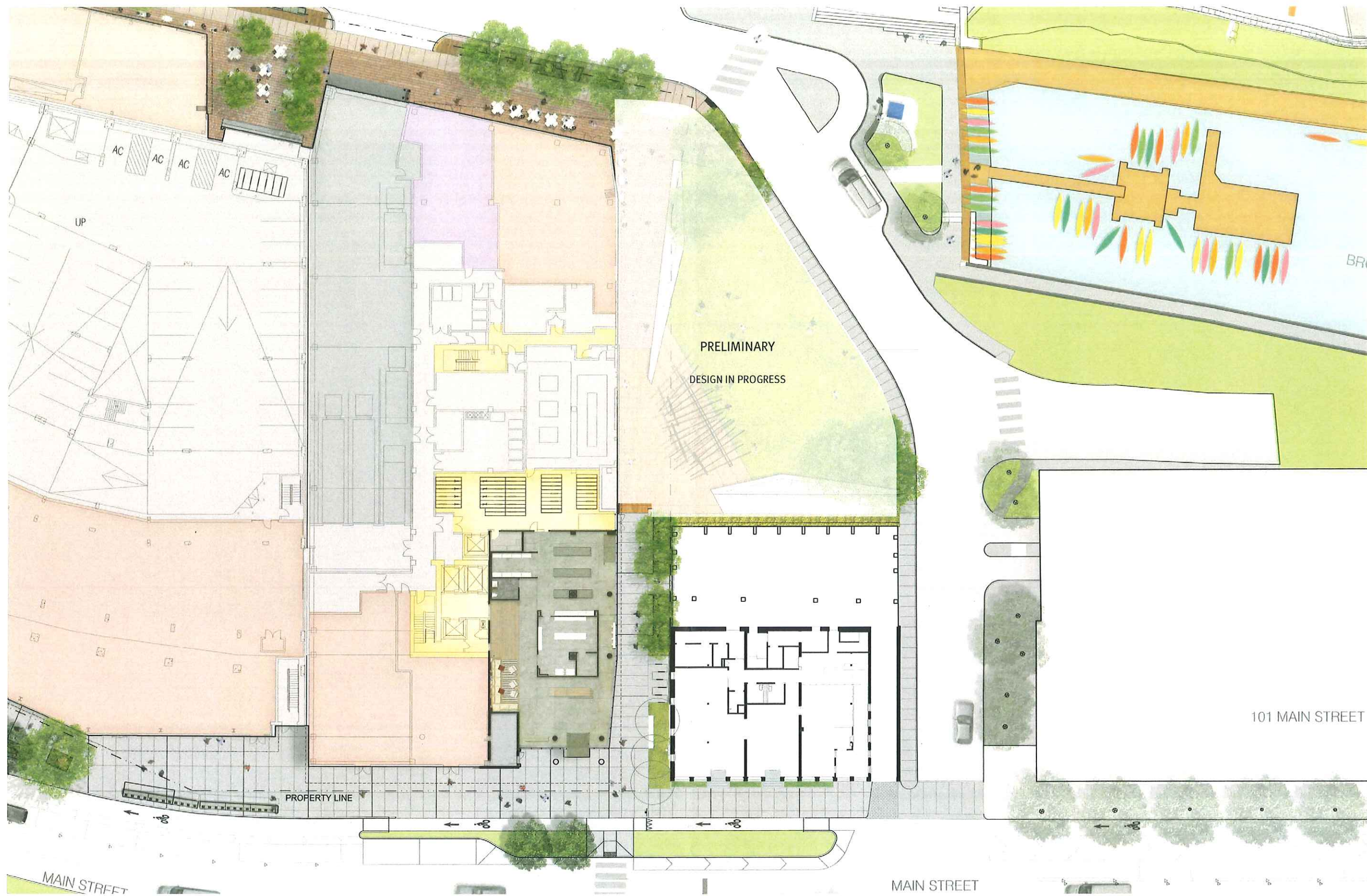
139 Main Street

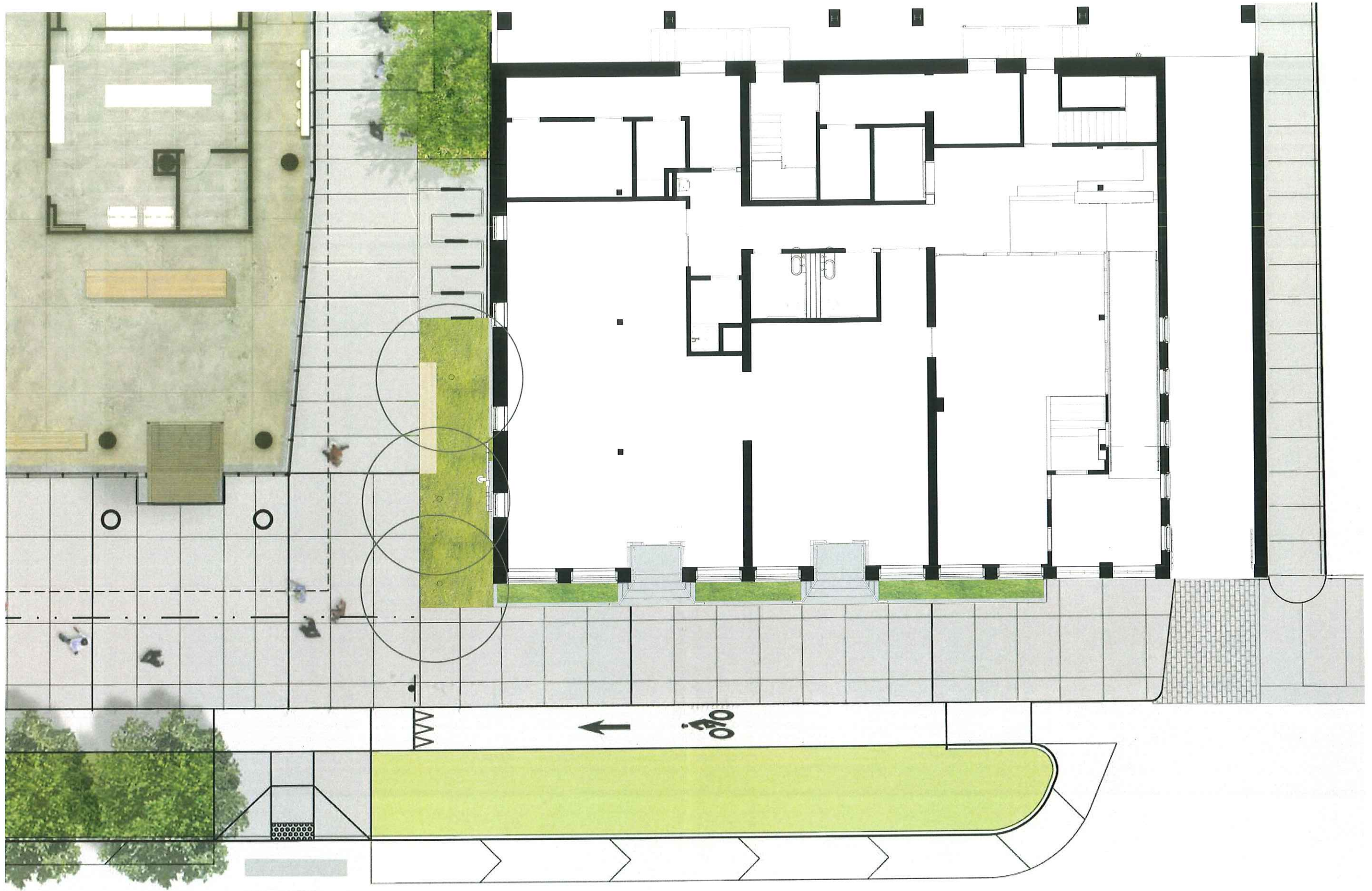
Cambridge Historical Commission Application (Supplementary Materials)
MIT Investment Management Company // Cambridge, MA // 10 Oct 2017



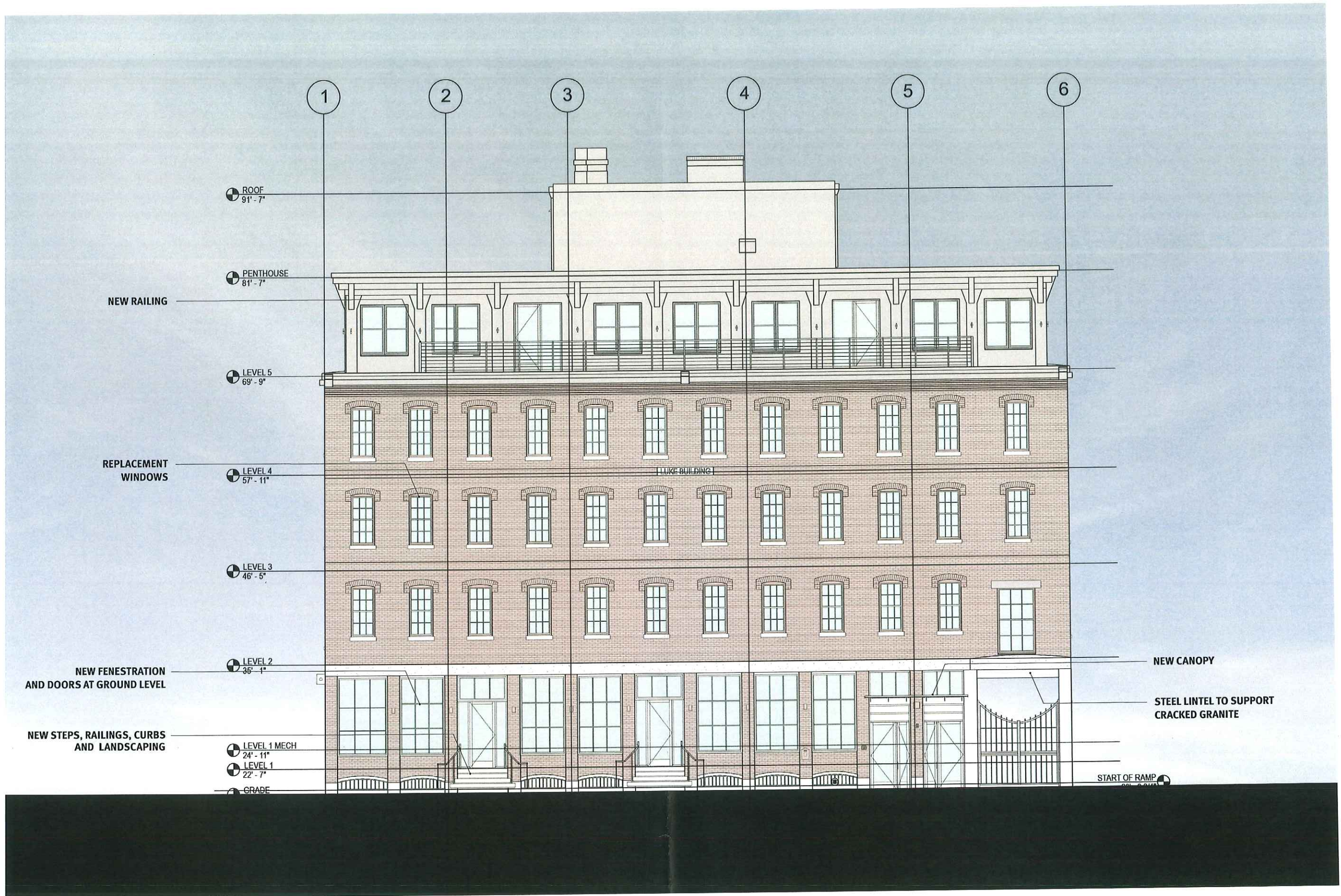
ARROWSTREET

10 POST OFFICE SQUARE
SUITE 700N
BOSTON MA 02109
617.623.5555
www.arrowstreet.com







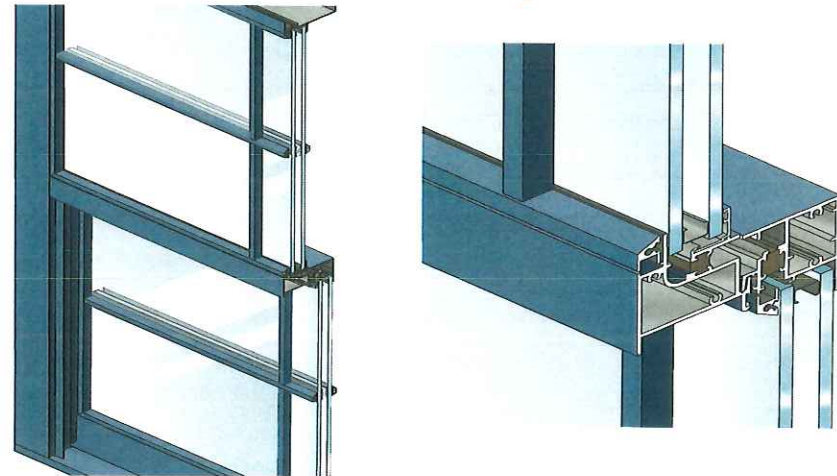








Series 601 Single Hung • Series 6615 Fixed • 6740 Fixed
3 7/8" Architectural Grade Hung Thermal Window



PERFORMANCE DATA

601 SINGLE HUNG ARCHITECTURAL GRADE		H-AW70
AAMA RATING		<.30 CFM/SF @ 6.24 PSF
AIR INFILTRATION		NO LEAKAGE @ 12.0 PSFS
WATER		44
CRF-FRAME		74
CRF-GLASS		

Note: All performance value data is based on laboratory testing per AAMA 101/15.2/A440 for Air/Water/Structural, ASTM E90 and or E413 for Acoustical, AAMA 507 and or NFRC 100/200/500 for U-factors and AAMA 1503 for Condensation Resistance Factor (CRF). Printed values are subject to change pending the frequency of recertification testing. Field results will vary depending on size, the field test method, the addition of sub-frames, panning, mullions, accessories and installation into the surrounding condition.

*Note: Based on NFRC 100 Job. specific performance ratings may vary due to differences in glass and glass spacer selection. If NFRC certified ratings are required, EFCO recommends requesting a CMA Bid Report at the bid stage from EFCO's Product Technical Support Group to ensure performance will meet project specifications

601 THERMAL U-FACTORS*	
CENTER OF GLASS U-FACTOR	CONFIGURATION AND SIZE
0.48	47" X 59"
0.34	
0.28	
0.24	
0.20	

* Based on NFRC 100
**NFRC Gateway size

NOTE:
TO BE EFCO OR
COMPARABLE

S-601 SINGLE HUNG HARDWARE CHART	SWEEP LOCK	AUTO SILL LOCK	POLE RING SWEEP LOCK	POLE SOCKET	ACCESS CONTROLLED SWEEP HANDLE	2 OR 4 BLOCK & TACKLE BALANCES	2 OR 4 CLASS 5 BALANCES
SINGLE HUNG	S	O	O	O	O	S	O

Some size restrictions may apply depending on hardware selected.
O-Optional
S-Standard
Blank - N/A

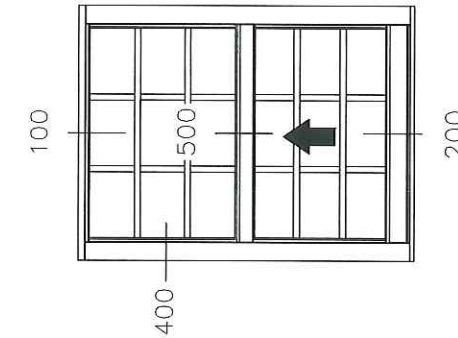
FIXED UPPER INSIDE GLAZED S-601 SINGLE HUNG GLAZING CHART	GLASS OR PANEL											
	1/8"	.156**	3/16"	.200**	1/4"	1/4**	1/2"	9/16"	5/8"	3/4"	7/8"	1"
MONOLITHIC & INSULATED GLASS	A	A	A	A	A	A	A	A	A	A	A	A

*-Obscure glass thickness
**-Laminated glass thickness
A-available glazing option
I-internal blinds can be used with this type of dual glazing
Blank - N/A

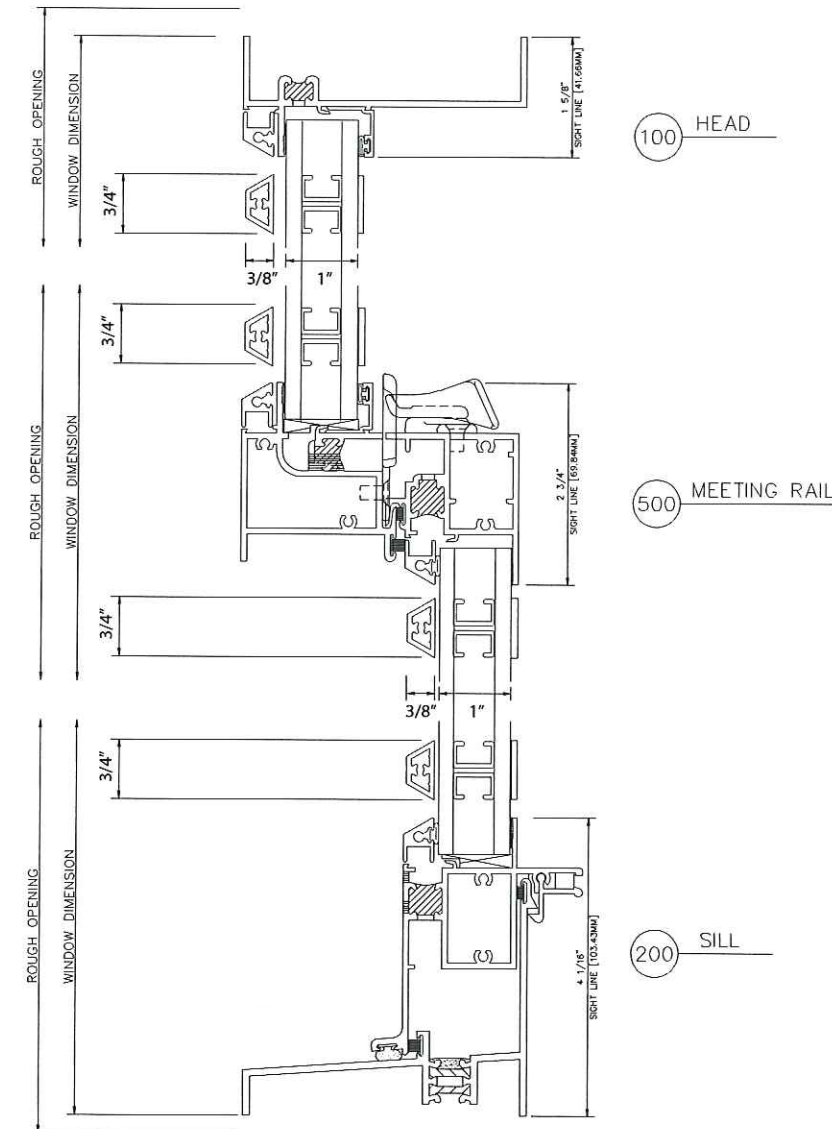
O.G. SASH OUTSIDE GLAZED S-601 SINGLE HUNG GLAZING CHART SASH	GLASS OR PANEL WITH SNAP-IN-GRID											
	1/8"	.156**	3/16"	.200**	1/4"	1/4**	1/2"	9/16"	5/8"	3/4"	7/8"	1"
MONOLITHIC & INSULATED GLASS												A

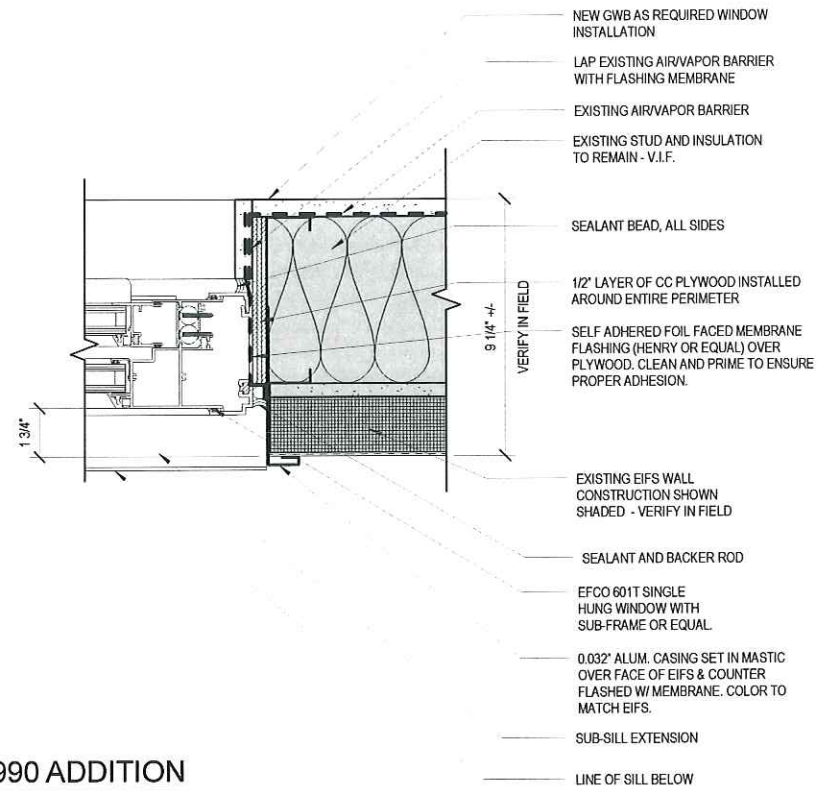
FIXED S-6615 GLAZING CHART	POLYCARBONATE		GLASS OR PANEL																
	1/8"	3/16"	1/4"	1/8"	.156**	3/16"	.200**	1/4"	1/4**	1/2"	5/8"	3/4"	7/8"	1"	1-1/8"	1-1/4"	1-1/2"	1-3/4"	2"
MONOLITHIC & INSULATED GLASS		A	A		A	A	A	A	A	A	A	A	A	A	A	A	A	A	A
DUAL GLAZING				A	A	A	A	A	A	A	A	A	A	A	A	A	A	A	A

FIXED S-6740 GLAZING CHART	POLYCARBONATE		GLASS OR PANEL																
	1/8"	3/16"	1/4"	1/8"	.156**	3/16"	.200**	1/4"	1/4**	1/2"	5/8"	3/4"	7/8"	1"	1-1/8"	1-1/4"	1-1/2"	1-3/4"	2"
MONOLITHIC & INSULATED GLASS	A	A		A	A	A	A	A	A	A	A	A	A	A	A	A	A	A	A

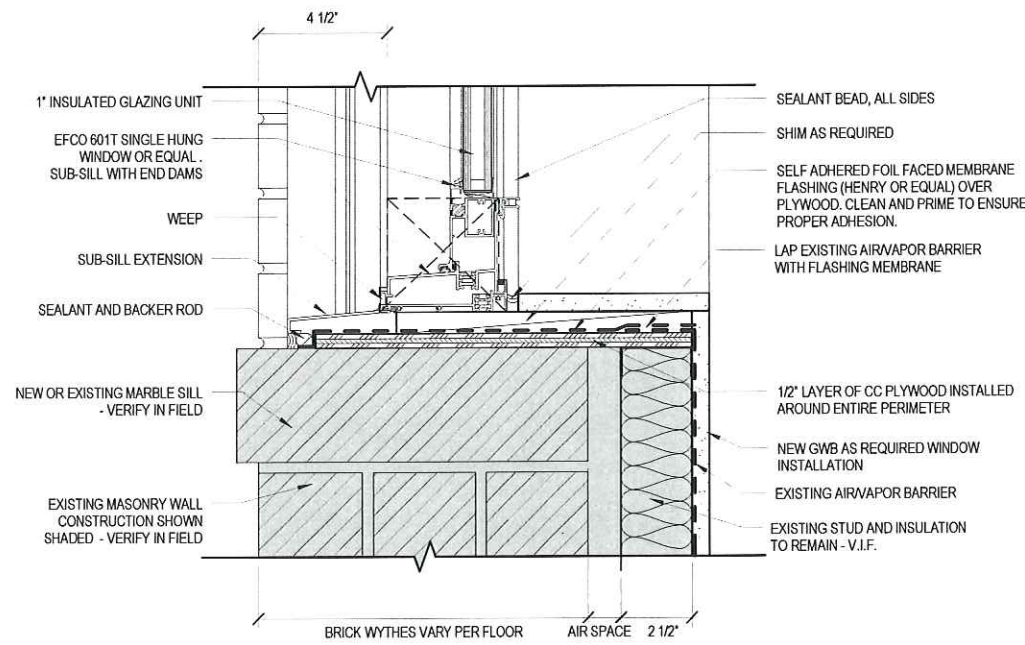


601 Single Hung

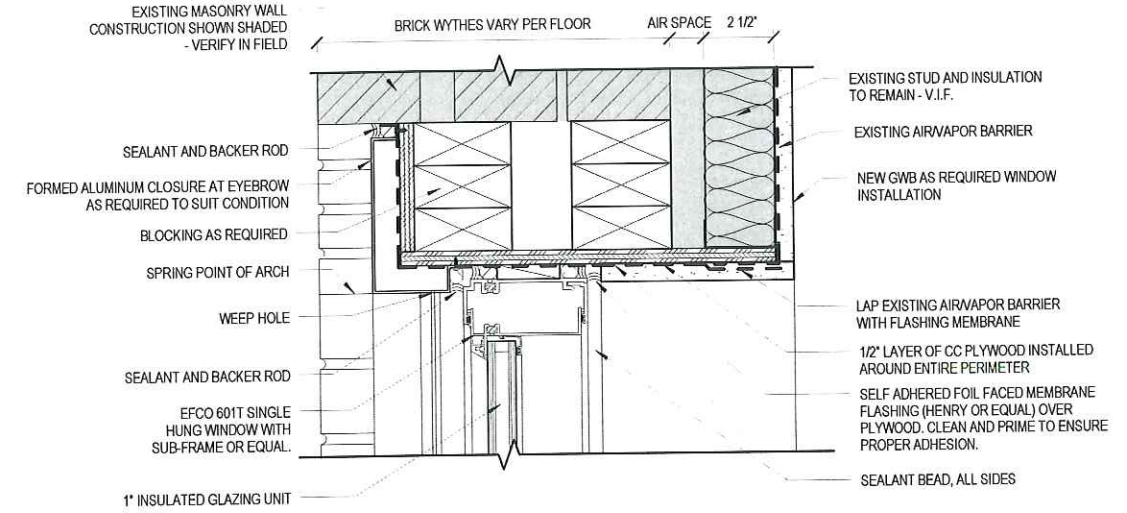




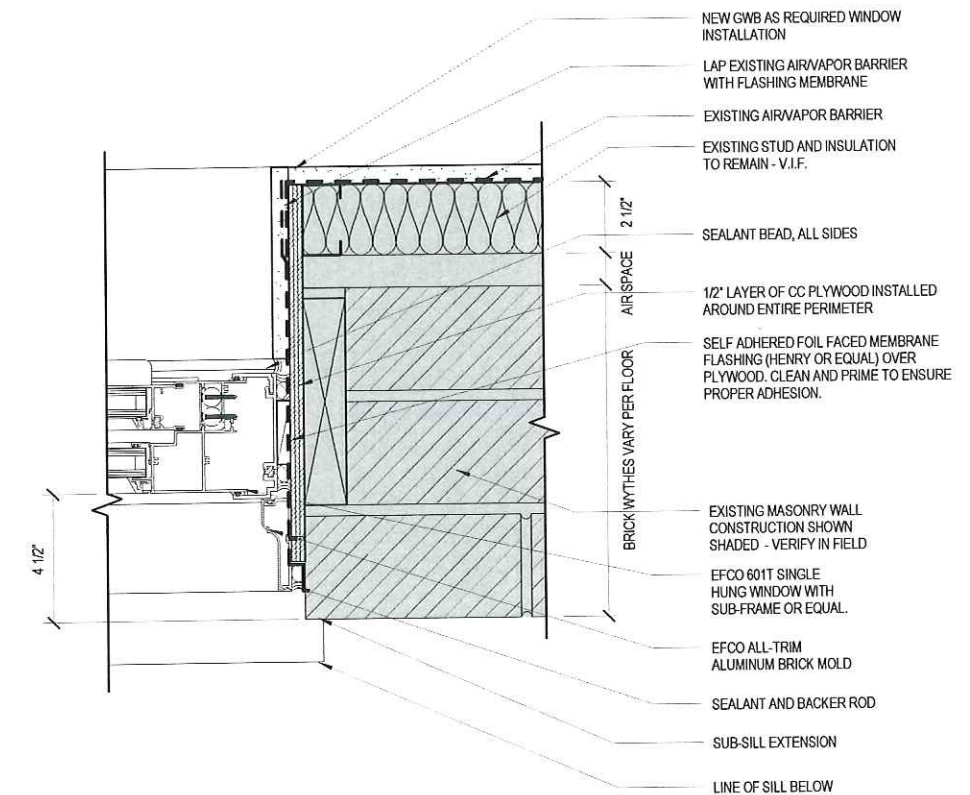
JAMB @ 1990 ADDITION



SILL @ EXIST. WINDOW OPENING (LUKE BUILDING)



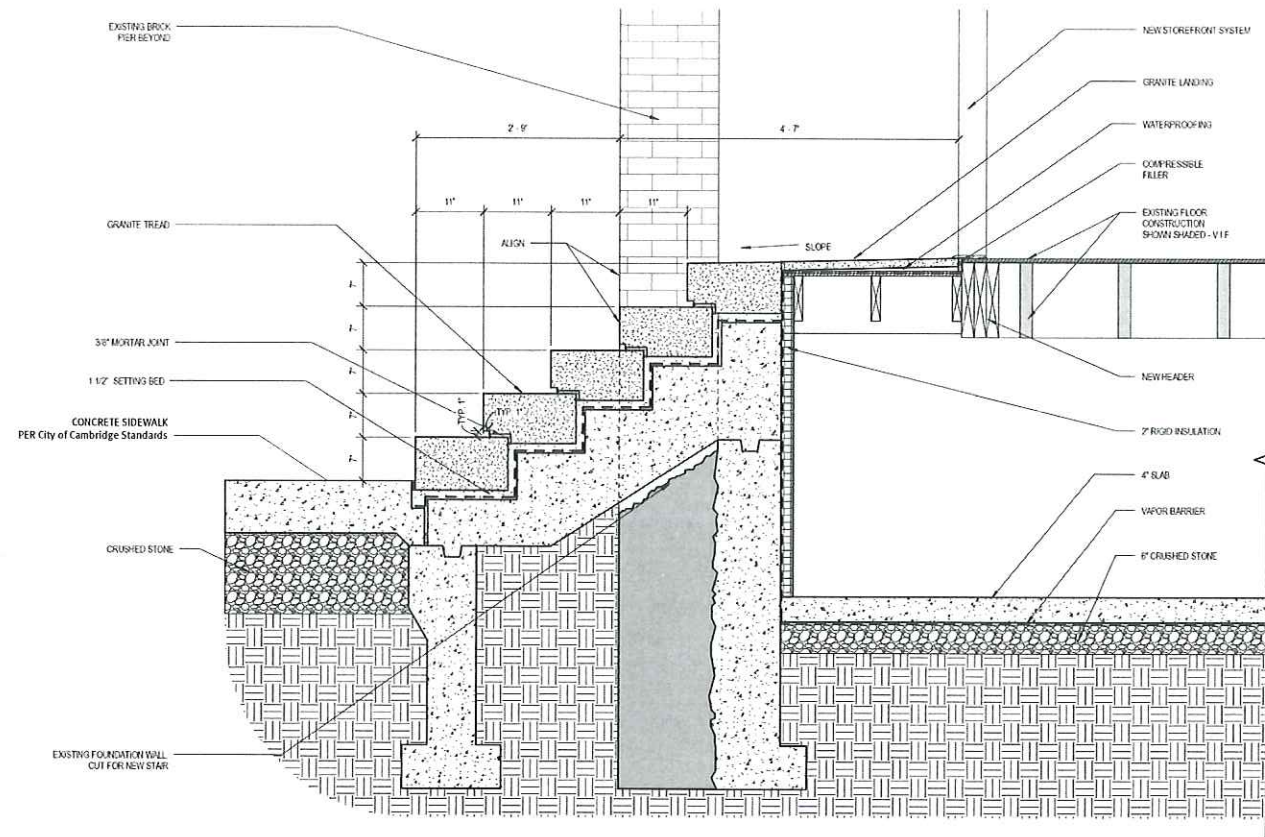
HEAD @ EXIST. WINDOW OPENING (LUKE BUILDING)



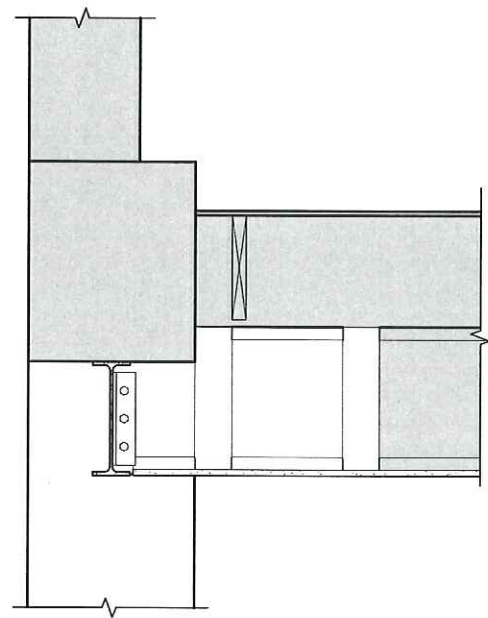
JAMB @ EXIST. WINDOW OPENING (LUKE BUILDING)

3" = 1'-0"

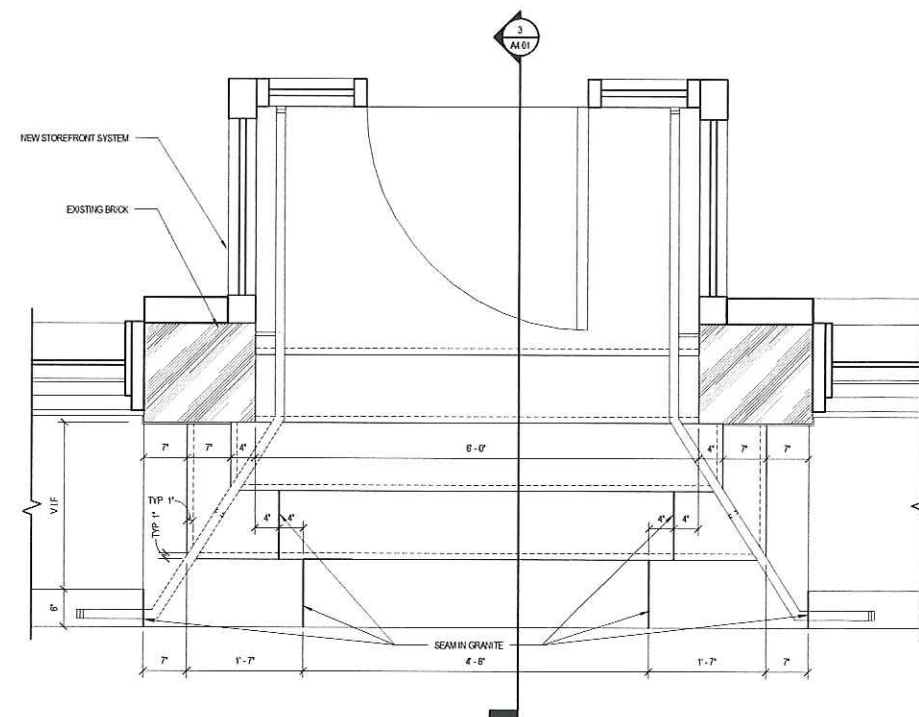




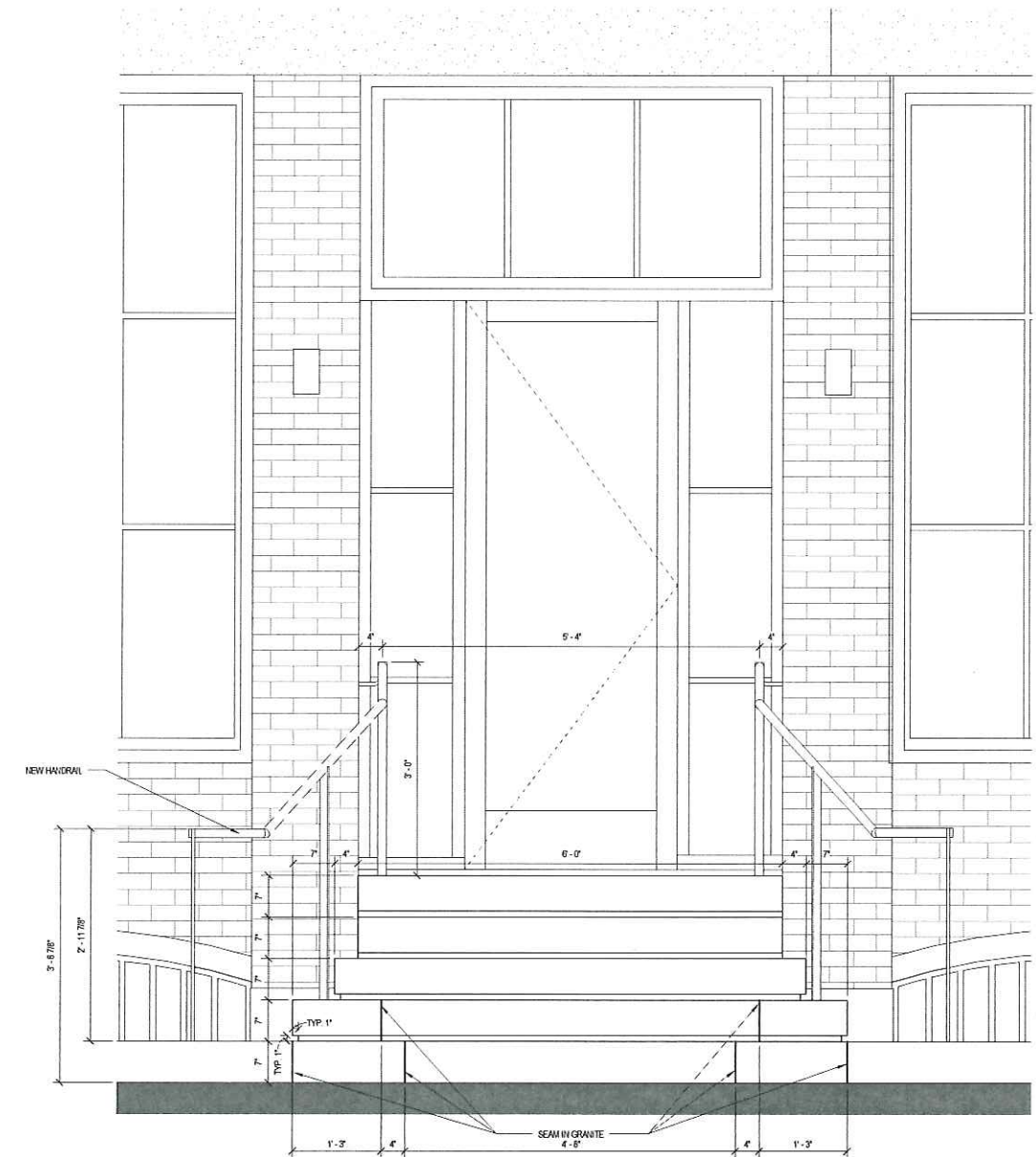
3 STOOP SECTION DETAIL
1" = 1'-0"



4 DETAIL @ DRIVEWAY SOFFIT
1 1/2" = 1'-0"



1 STOOP & STOREFRONT ENLARGED PLAN
1" = 1'-0"

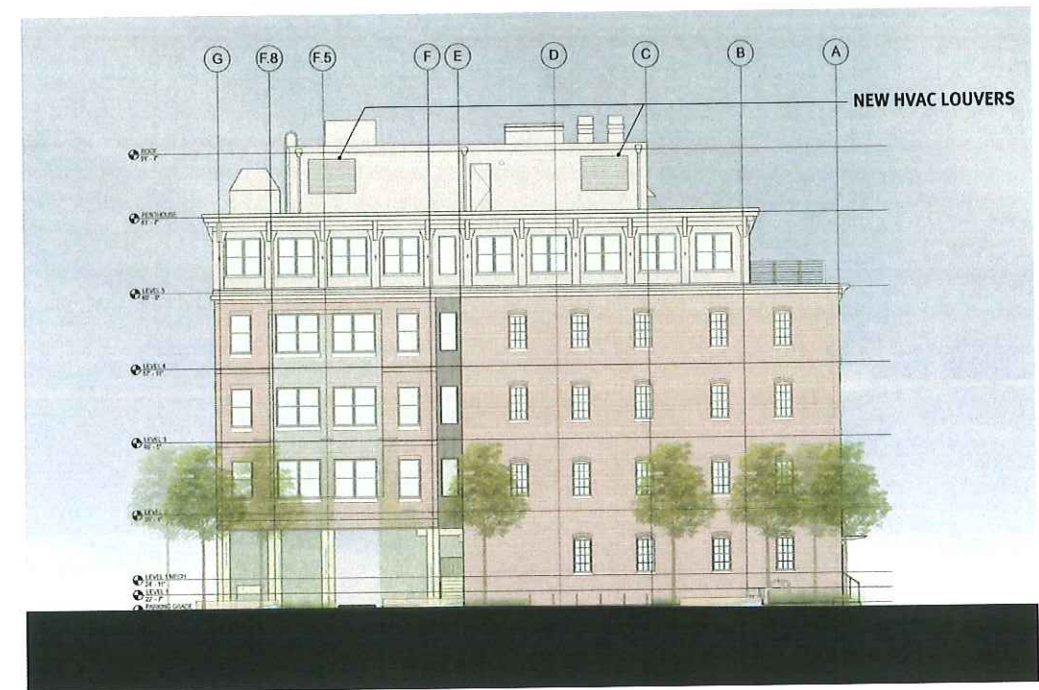


2 STOOP & STOREFRONT ENLARGED SOUTH ELEVATION
1" = 1'-0"





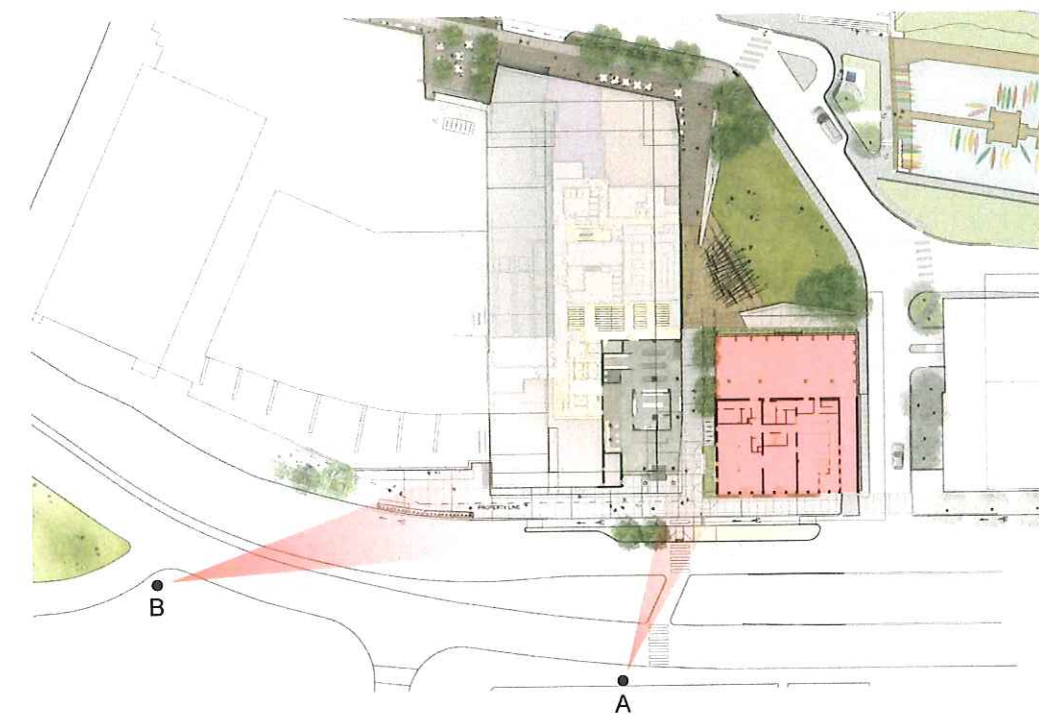
VIEW POINT A



WEST ELEVATION



VIEW POINT B



STREET VIEW POINTS



The following images contain design work
by MITIMCo's Site 1 team (Elkus Manfredi
and Landworks)

139 Main Street

Cambridge Historical Commission Application (Supplementary Materials)
MIT Investment Management Company // Cambridge, MA // 10 Oct 2017



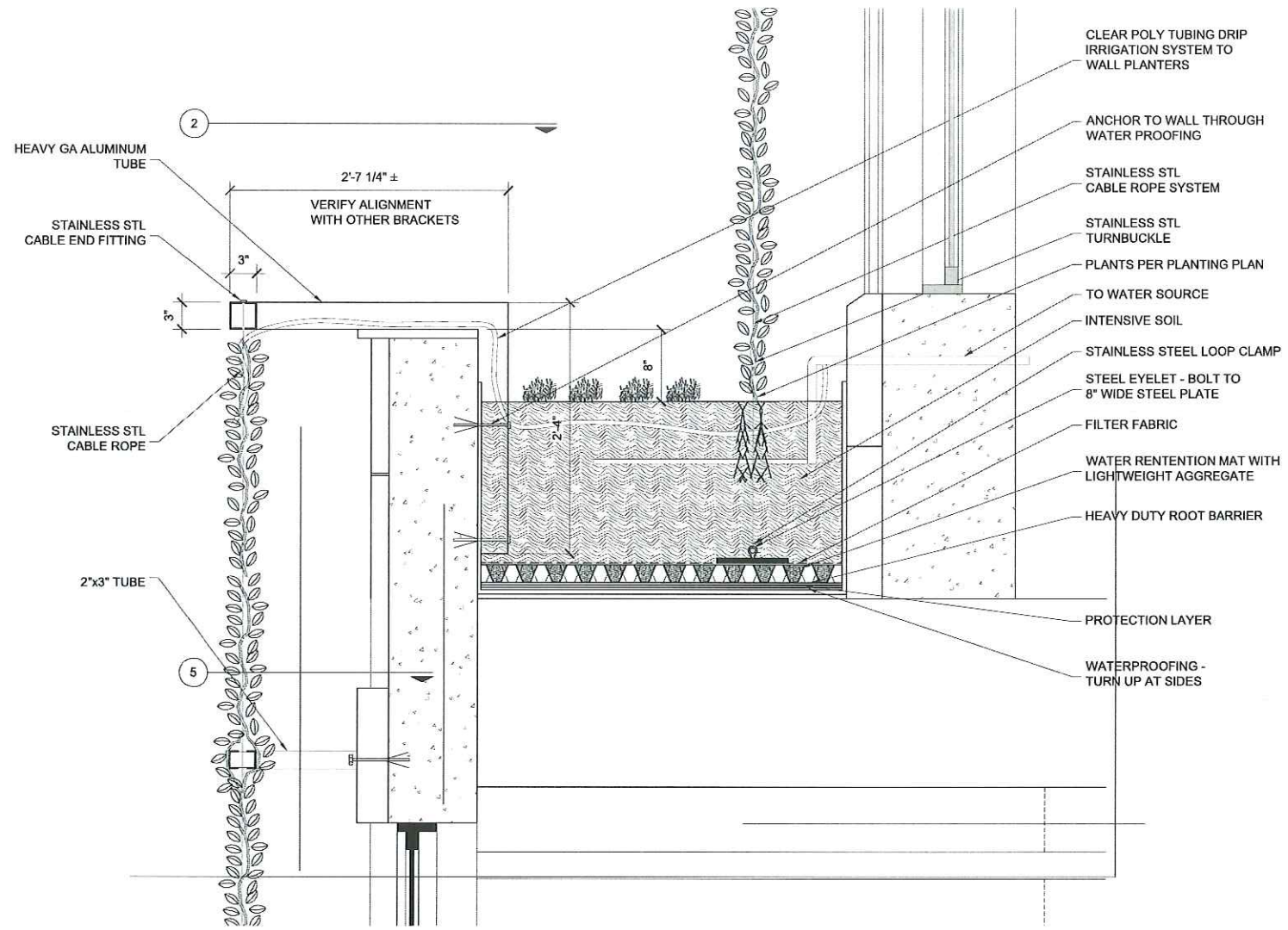
ARROWSTREET

10 POST OFFICE SQUARE
SUITE 700N
BOSTON MA 02109
617.623.5555
www.arrowstreet.com



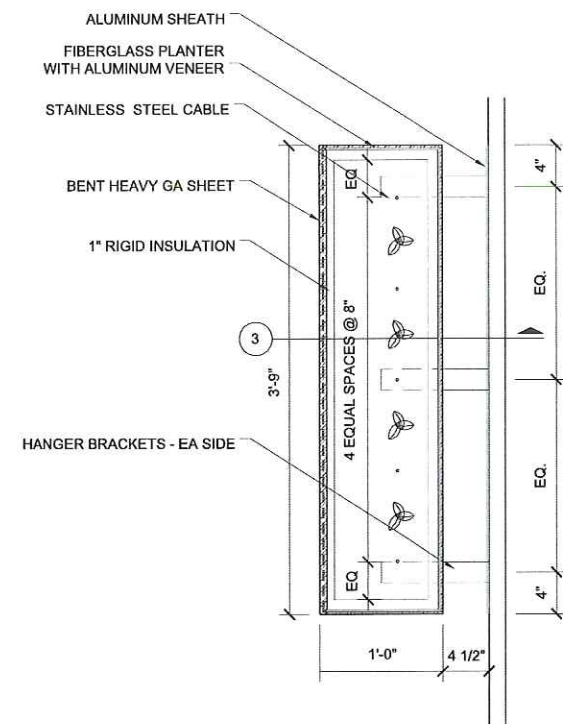
PEDESTRIAN CORRIDOR VIEW 2

landworks>studio | Elkus Manfredi Architects | MIT | BUILDING 1: KENDALL SQUARE HOUSING



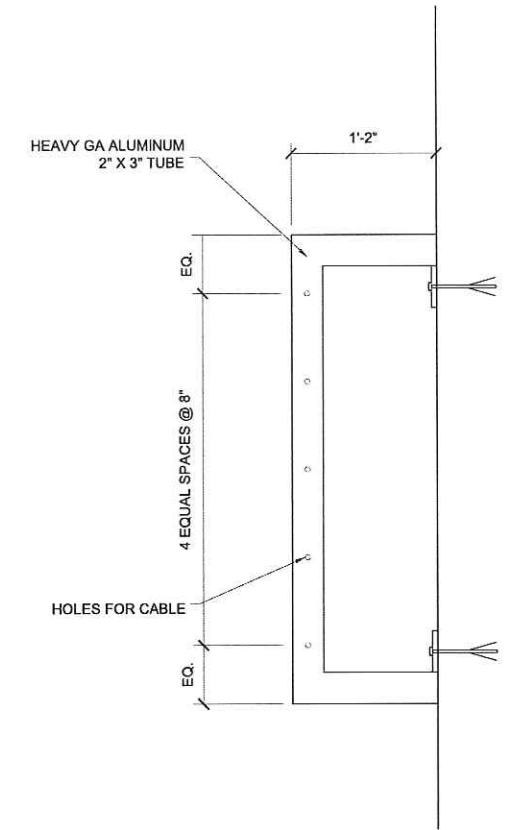
1 PLANTER AT SETBACKS @ AKEBIA

SECTION



4 WALL HUNG PLANTER

PLAN

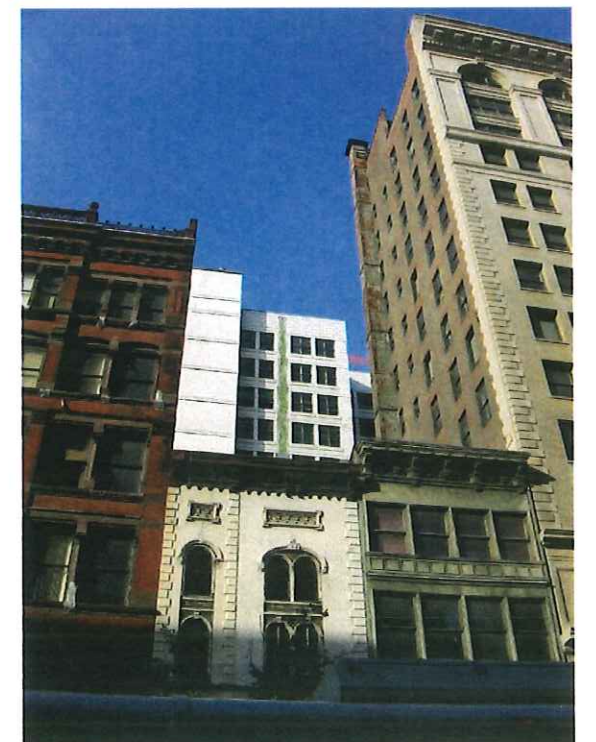


5 CABLE BRACKET

PLAN

PRECEDENT - 200 5th Avenue, NYC

landworks>studio | Elkus Manfredi Architects | MIT | BUILDING 1: KENDALL SQUARE HOUSING

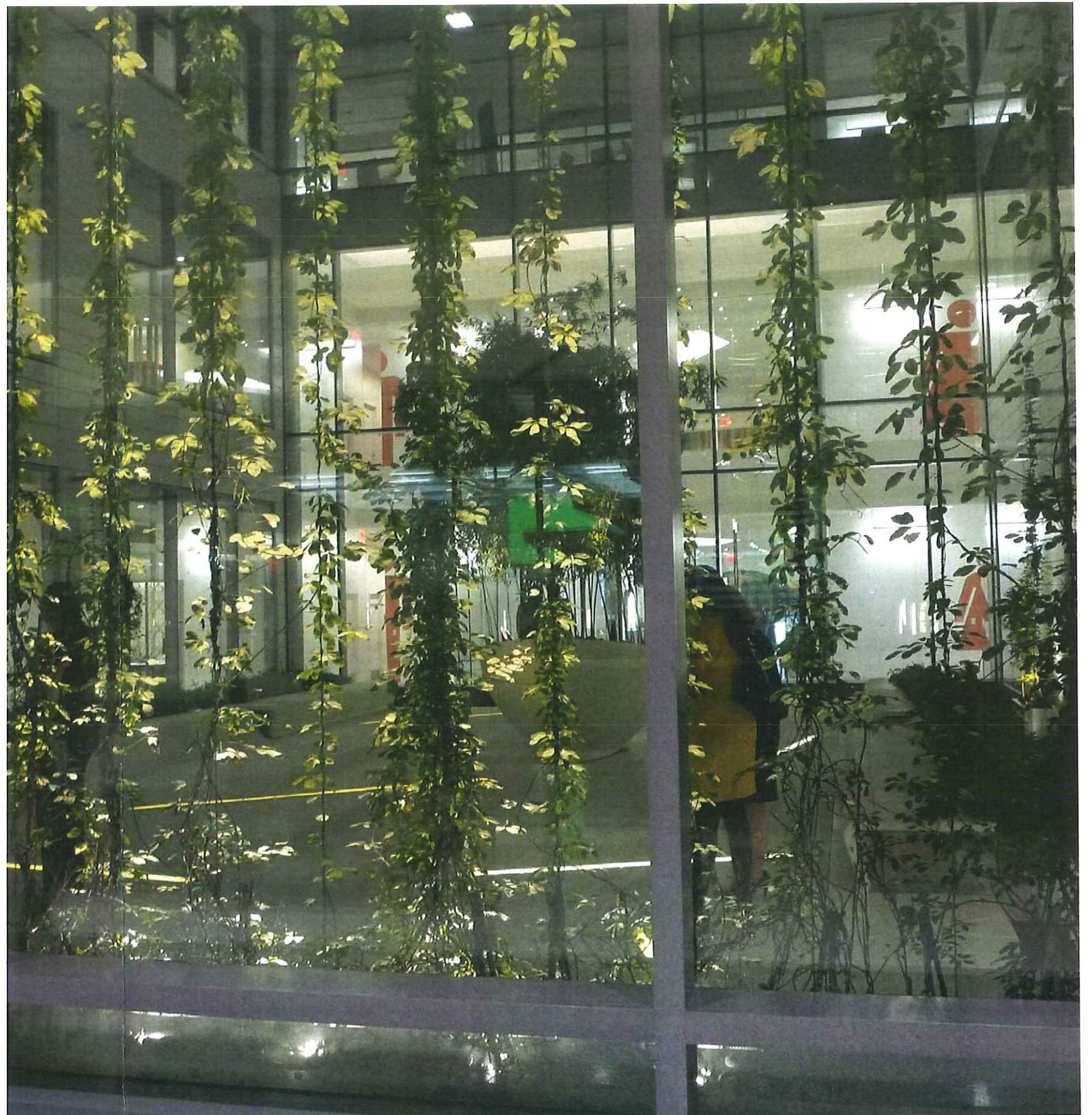
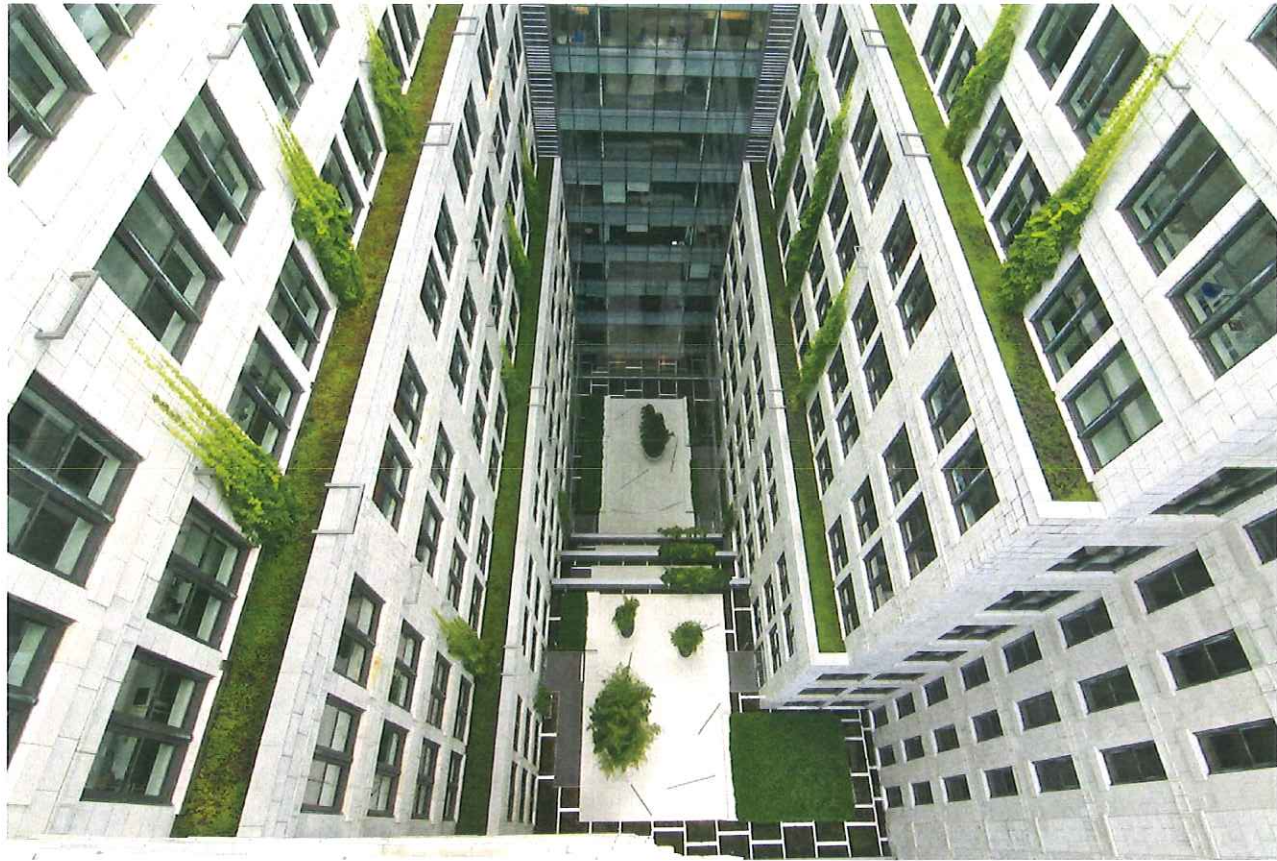


VIEW FROM 23RD STREET



PRECEDENT - 200 5th Avenue, NYC

landworks>studio | Elkus Manfredi Architects | MIT | BUILDING 1: KENDALL SQUARE HOUSING



PRECEDENT - 200 5th Avenue, NYC

landworks>studio | Elkus Manfredi Architects | MIT | BUILDING 1: KENDALL SQUARE HOUSING

