

RECEIVED

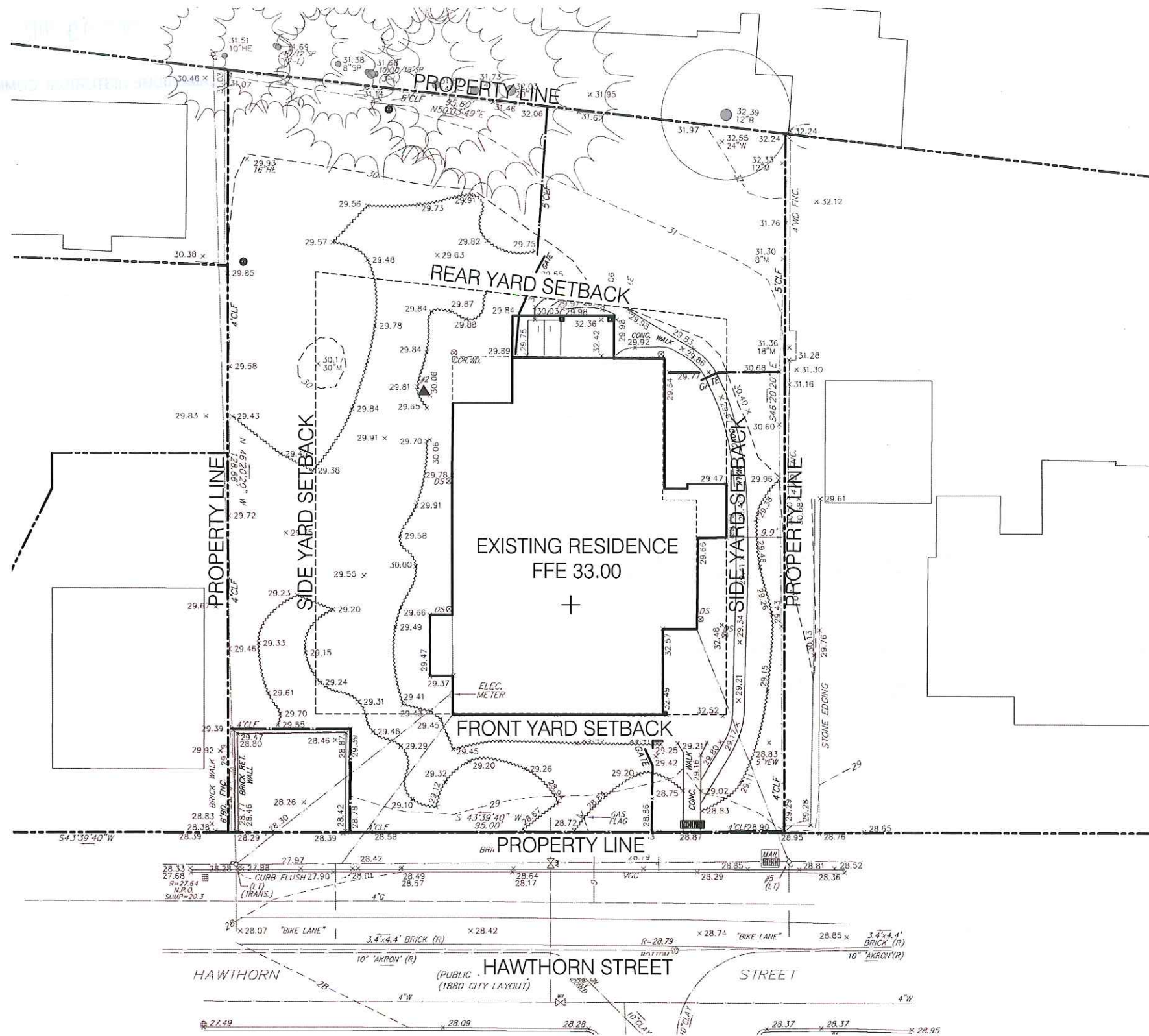
OCT 09 2017

CAMBRIDGE HISTORICAL COMMISSION






23 HAWTHORN STREET

Cambridge Historical Commission
Application for Certificate of Appropriateness
October 10, 2017

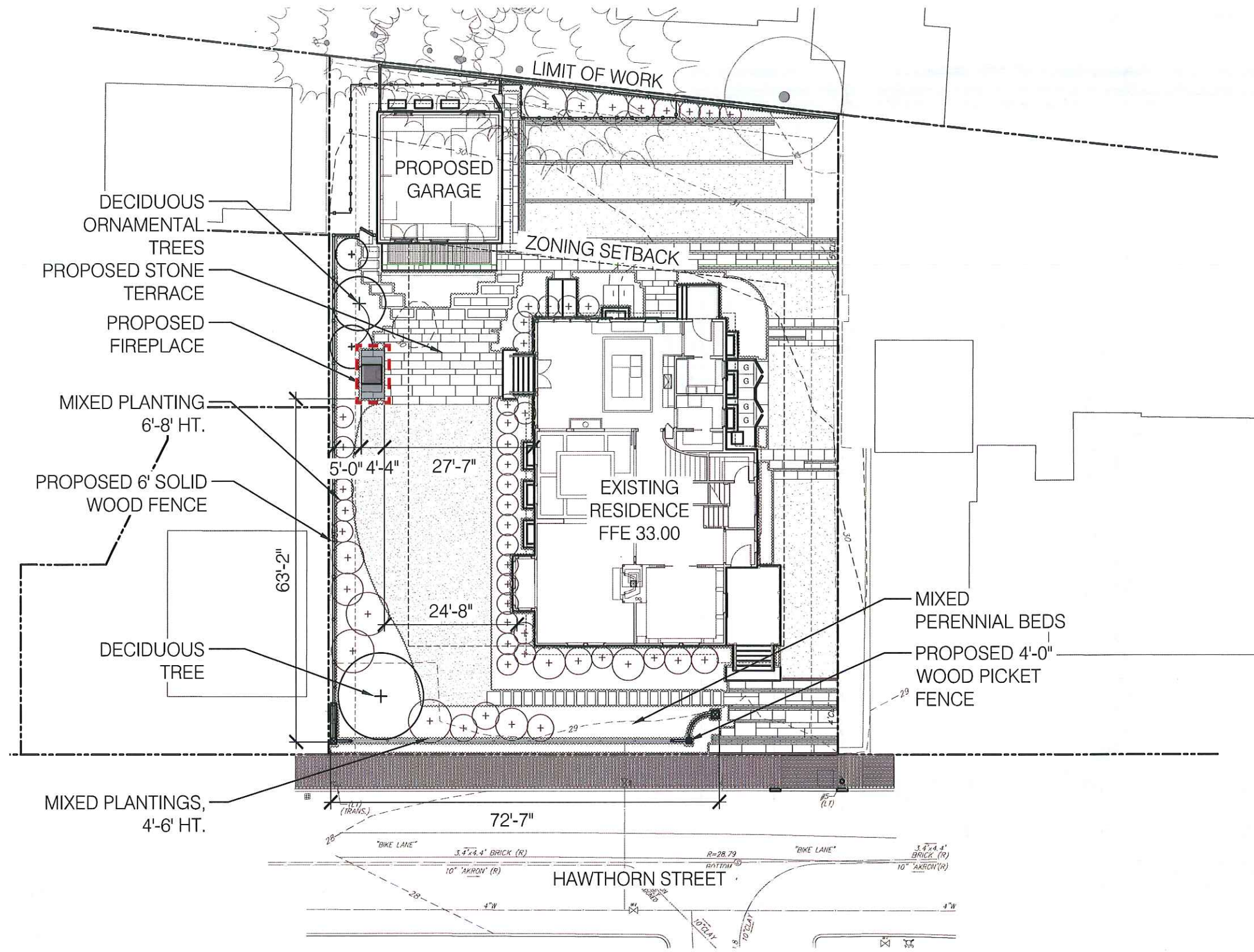
Submitted by Gregory Lombardi Design, Inc.
2235 Massachusetts Avenue, Cambridge, MA 02140
617.492.2808



LEGEND

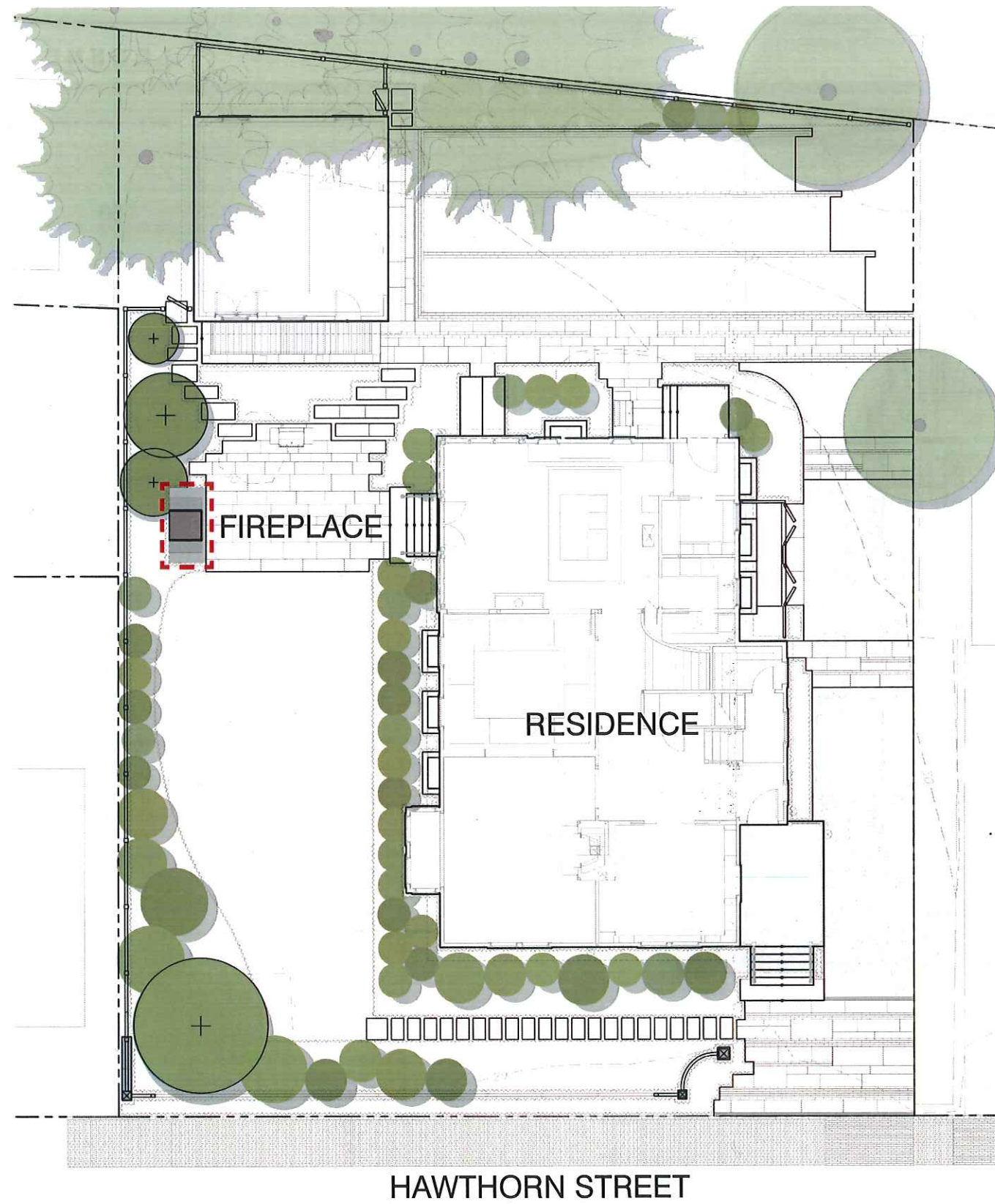
-  PROPERTY LINE
-  ZONING SETBACK
-  50 EXISTING CONTOUR
-  EXISTING DECIDUOUS TREE TO REMAIN
-  EXISTING EVERGREEN TREE TO REMAIN



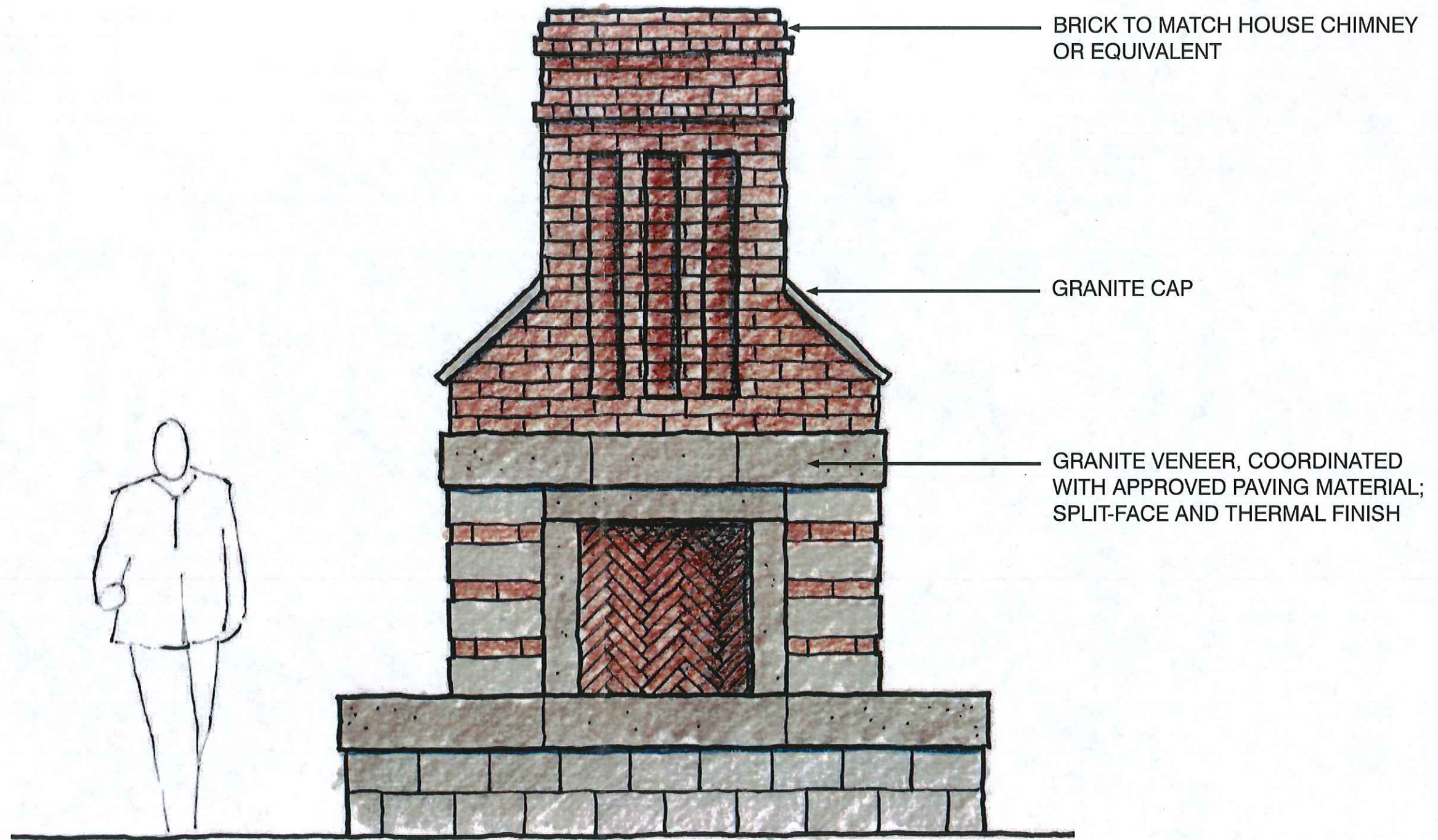


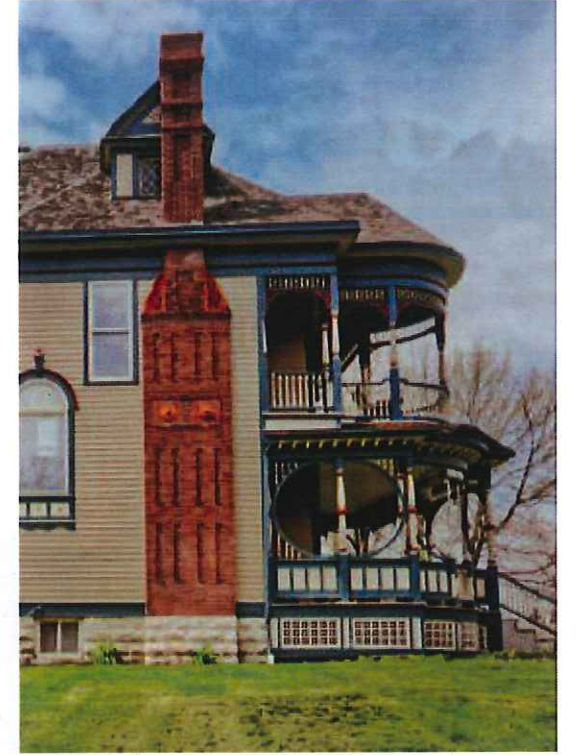
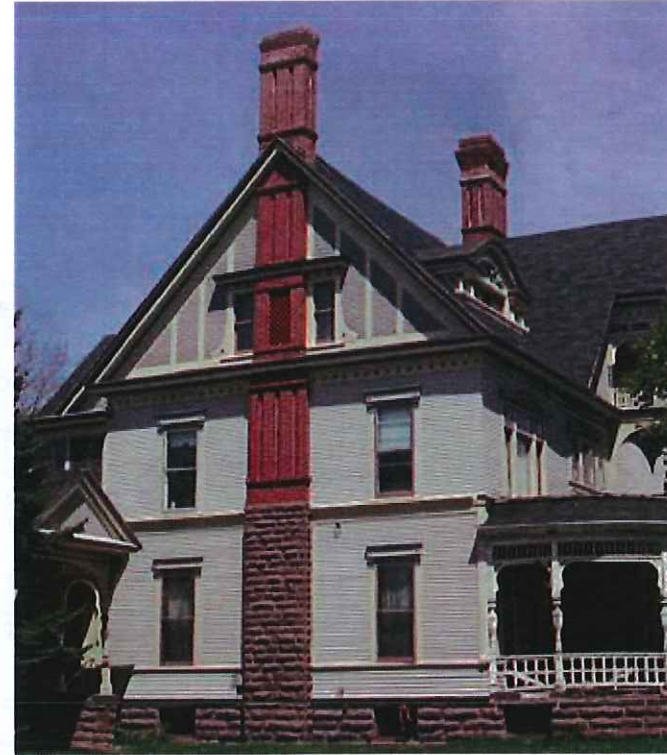
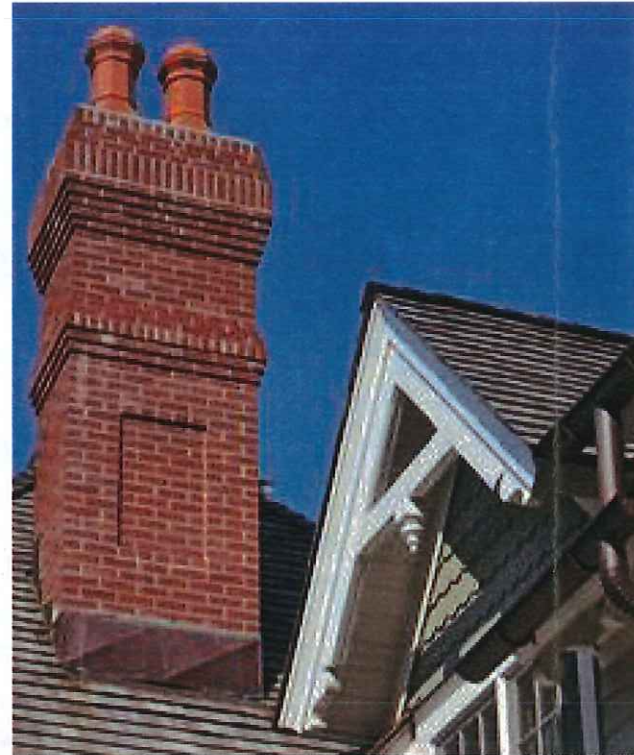
LEGEND	
	PROPERTY LINE
	ZONING SETBACK
	EXISTING CONTOUR
	EXISTING DECIDUOUS TREE TO REMAIN
	EXISTING EVERGREEN TREE TO REMAIN
	PROPOSED TREE/SHRUB

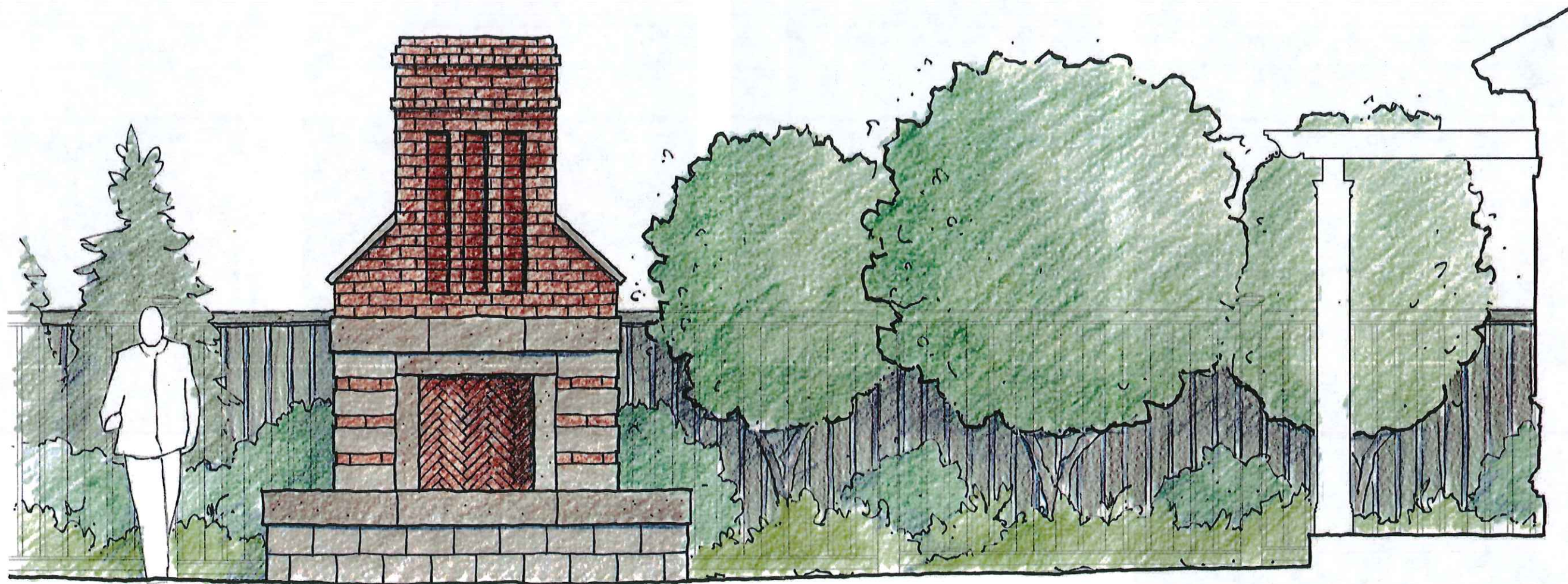








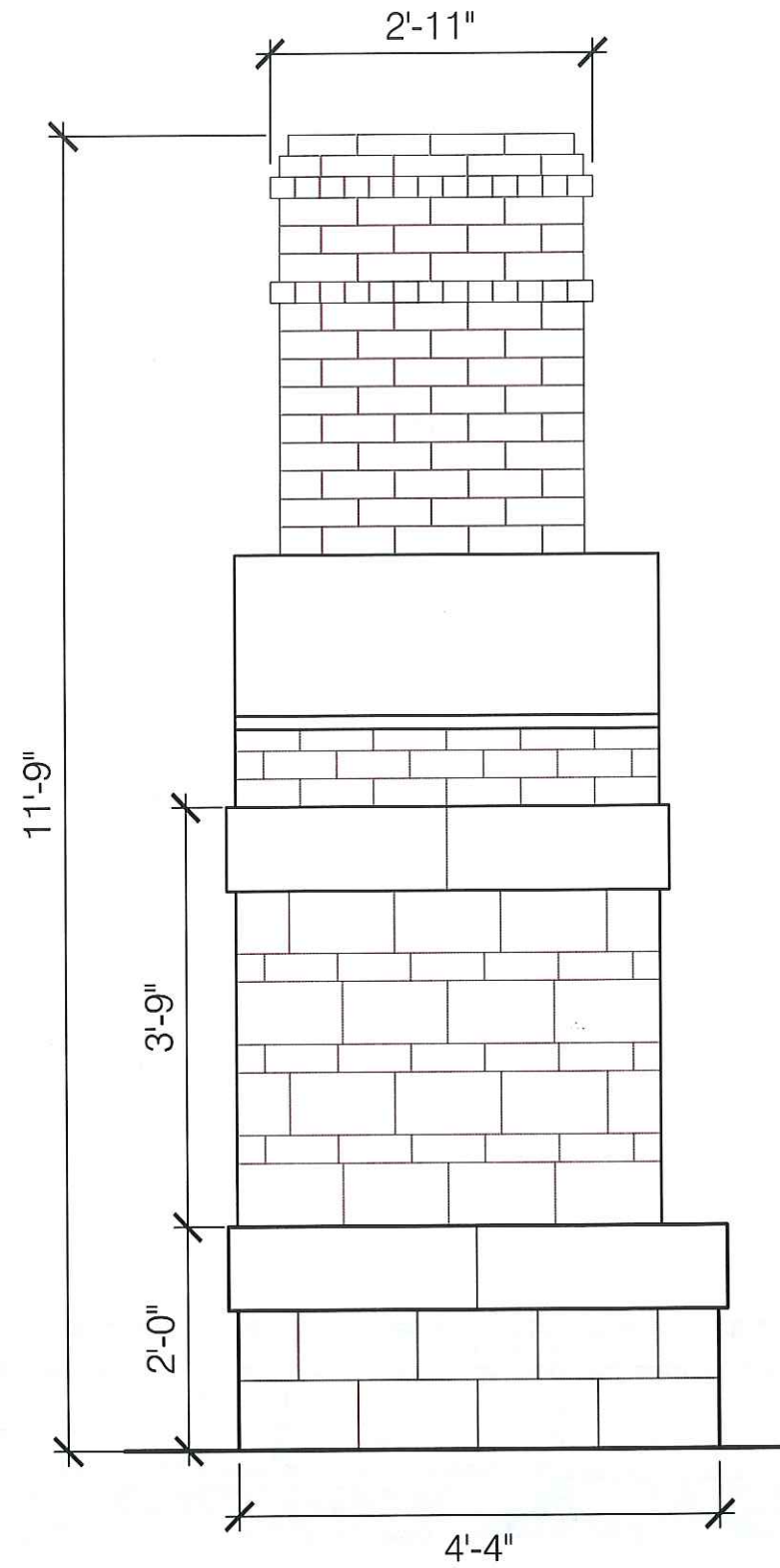




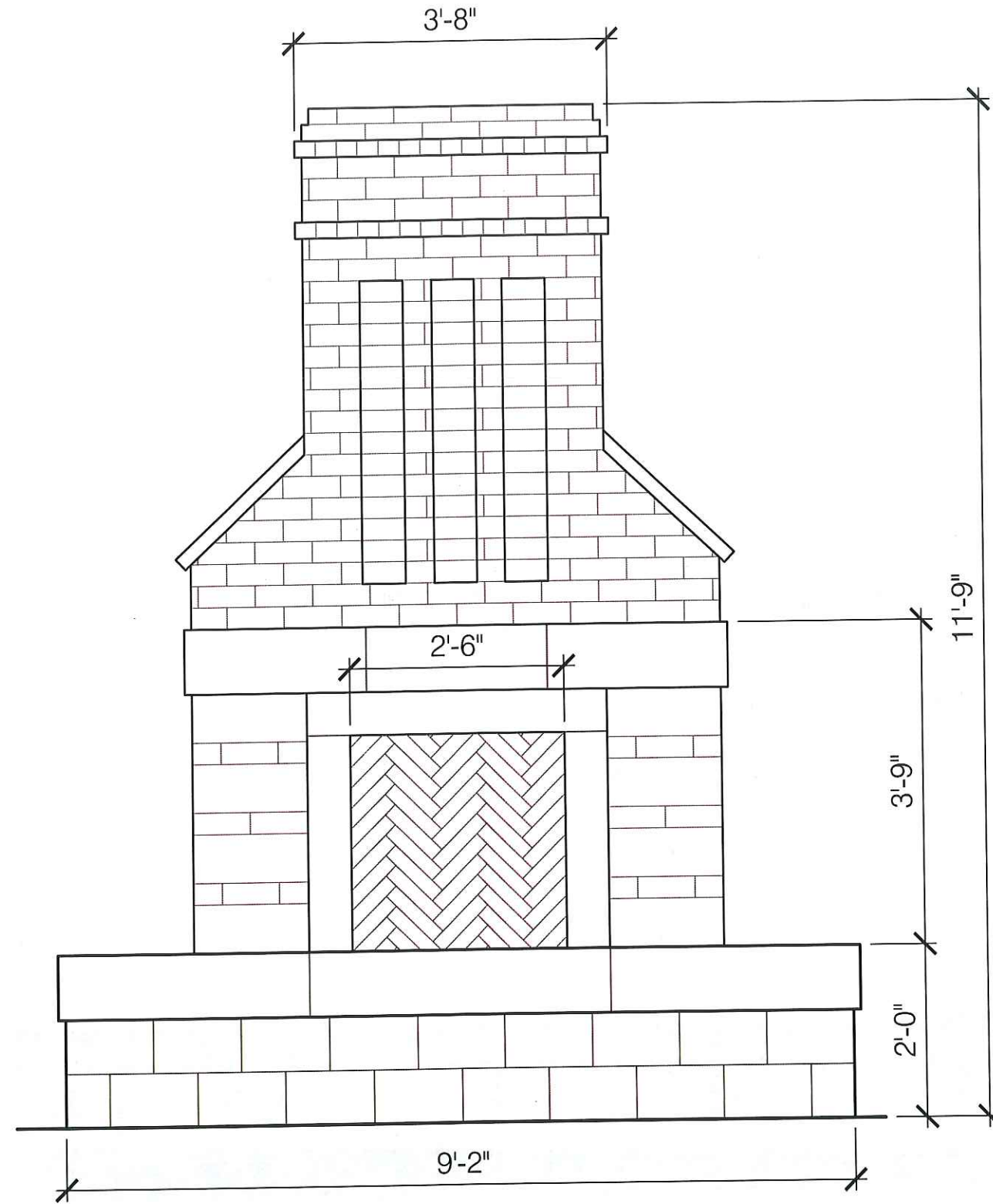
Gregory Lombardi Design, Inc.
2235 Massachusetts Avenue, Cambridge, MA 02140
617.492.2808

23 Hawthorn Street
Proposed Outdoor Fireplace Elevation





SIDE ELEVATION



FRONT ELEVATION