



CAMBRIDGE HISTORICAL COMMISSION

831 Massachusetts Avenue, 2nd Fl., Cambridge, Massachusetts 02139
Telephone: 617 349 4683 TTY: 617 349 6112
E-mail: histcomm@cambridgema.gov URL: www.cambridgema.gov/Historic

RECEIVED

JUN 18 2018

APPLICATION FOR CERTIFICATE

CAMBRIDGE HISTORICAL COMMISSION

1. The undersigned hereby applies to the Cambridge Historical Commission for a Certificate of (check one box): [X] Appropriateness, [] Nonapplicability, or [] Hardship, in accordance with Chapter 40C of the Massachusetts General Laws and/or Chapter 2.78 of the Municipal Code.

2. Address of property: [14 Story Street], Cambridge, Massachusetts

3. Describe the proposed alteration(s), construction or demolition in the space provided below: (An additional page can be attached, if necessary).

President and Fellows of Harvard College proposes to replace the front entrance at 14 Story Street. See attached plans.

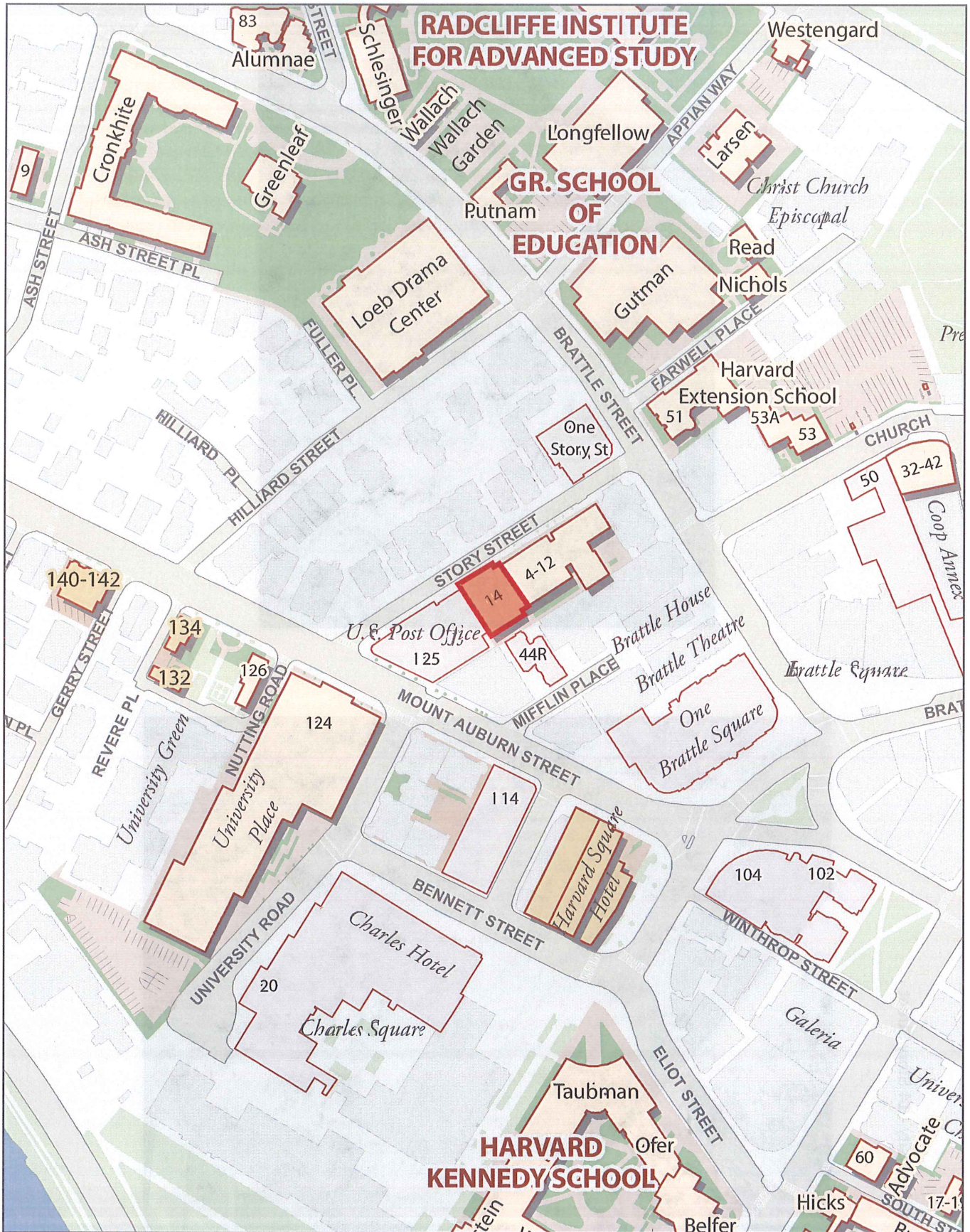
I certify that the information contained herein is true and accurate to the best of my knowledge and belief. The undersigned also attests that he/she has read the statements printed on the reverse.

Form containing fields for Name of Property Owner of Record, Mailing Address, Telephone/Fax, E-mail, Signature of Property Owner of Record, Name of proponent, if not record owner, Mailing Address, Telephone/Fax, and E-mail.

(for office use only): Date Application Received: 6/18/18 Case Number: 3968 Hearing Date: 7/12/18 Type of Certificate Issued: Date Issued:

Harvard University - 14 Story Street

Project Site + Vicinity Map



Harvard University - 14 Story Street
Photos





A102

ISSUE: 06.14.18
DATE: 06.14.18
SCALE: AS INDICATED
REV: REV.

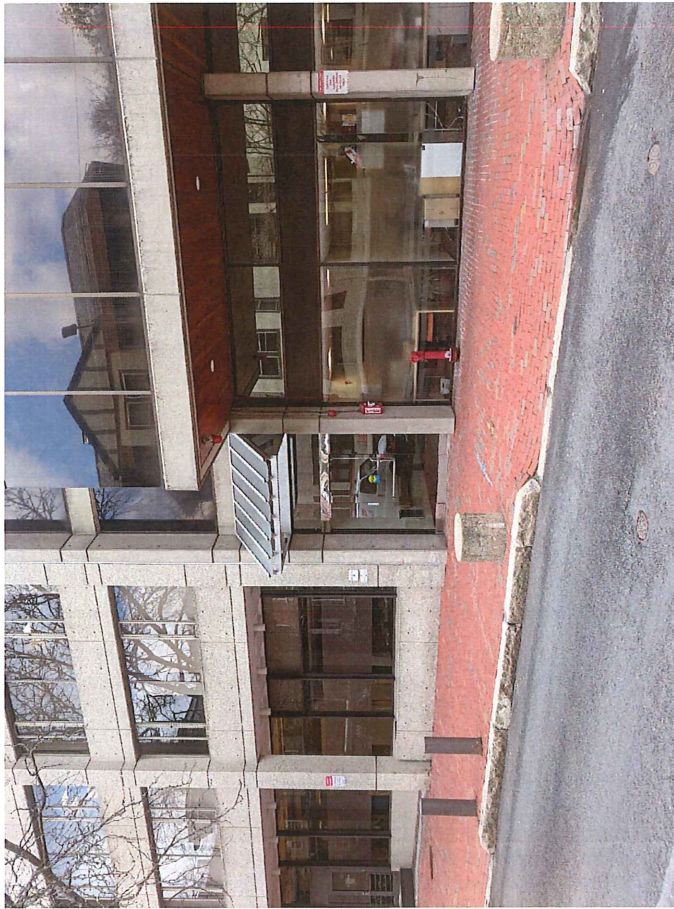
DRAWING TITLE:
3D RENDERING

PROJECT:
SELECTIVE FACADE IMPROVEMENTS
HARVARD REAL ESTATE
14 STORY ST. CAMBRIDGE, MA 02138
ARCH. PROJECT #: 18107

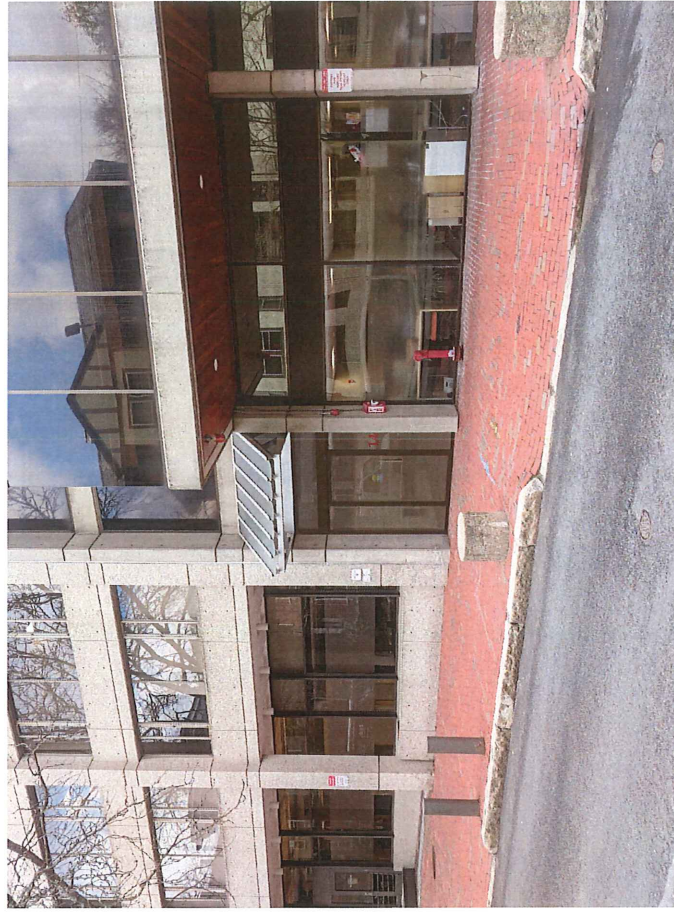
OWNER:
PRESIDENT & FELLOWS OF HARVARD COLLEGE
HARVARD REAL ESTATE
100 UNIVERSITY AVENUE
CAMBRIDGE, MA 02138
617.495.0816

ARCHITECT:
SCHNEE ARCHITECTS, INC.
339 Auburn Street
Cambridge, MA 02142
Tel: 617-630-1900
www.schneearch.com





BEFORE



AFTER



ARCHITECT:
 SCHNEE ARCHITECTS, INC.
 339 Auburn Street
 Cambridge, MA 02138
 Tel: 617-453-1500
 www.schneearch.com

OWNER:
 PRESIDENT & FELLOWS OF HARVARD COLLEGE
 HARVARD REAL ESTATE
 14 STORY ST. CAMBRIDGE
 CAMBRIDGE, MA 02138
 617-4950918

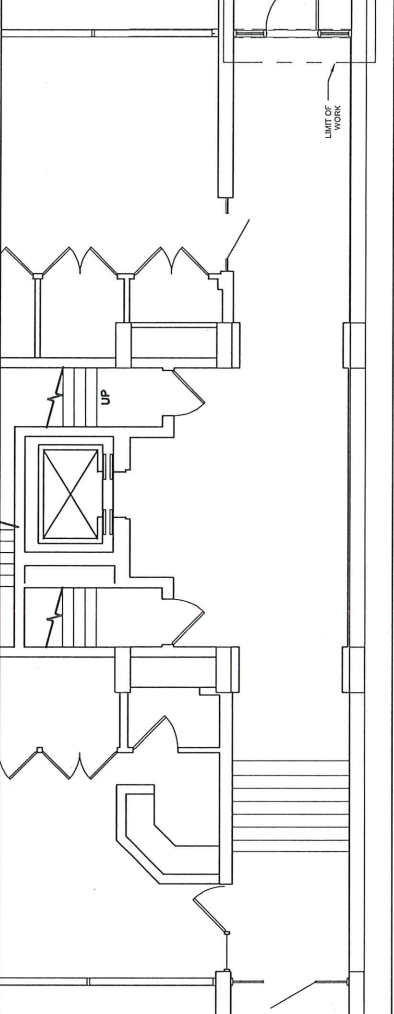
PROJECT:
 SELECTIVE FACADE IMPROVEMENTS
 HARVARD REAL ESTATE
 14 STORY ST. CAMBRIDGE, MA 02138
 ARCH. PROJECT#: 18107

DRAWING TITLE:
 3D RENDERING 2

A103

ISSUE: 06.14.18
SCALE: AS INDICATED
REV.:

- EXISTING BUILDING OUTLINE
CONSTRUCTION TO REMAIN
- EXISTING BUILDING
CONSTRUCTION TO REMAIN
- EXISTING BUILDING
CONSTRUCTION TO REMAIN



Architect of Record:
SCHNEE ARCHITECTS, INC
339 AUBURN STREET
NEWTON, MA 02466
617.630.1900
www.schneeearch.com

Project number
Date
Drawn by
Checked by
Scale

18107
05/14/18
RMS
GWS
A101
AS NOTED

NOTES
1. AUTOMISBROOKE EASTING.
AS NEEDED WHERE COMPONENTS
EDGES OF EXISTING METAL
DASHED PATCH OF EXISTING FLOOR
NEW 3/4" W. X 2" H. AUTOMATIC
PULLUPHUBBARD COMBO MATCH
STAINLESS STEEL STRAIGHT PULL
HARDWARE. EXTEND POWER AS
NECESSARY TO EXISTING WALL.
STOREFRONT SYSTEM WITH
REQUIRED AS USED BY KAWNEER OR
APPROVED EQUAL.

2. PARTIAL FLOOR PLAN
SCALE: 1/4" = 1'-0"

LIMIT OF WORK

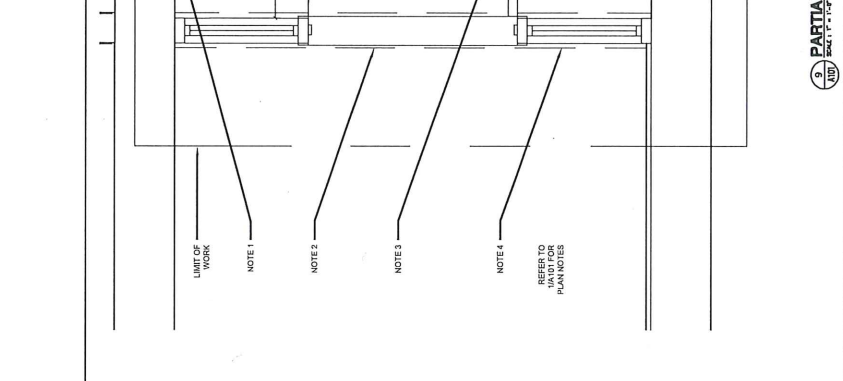
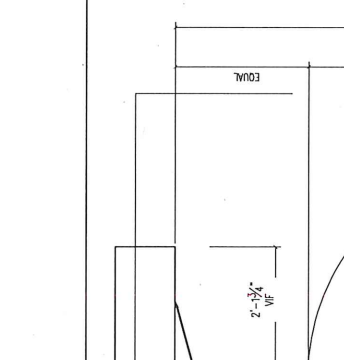
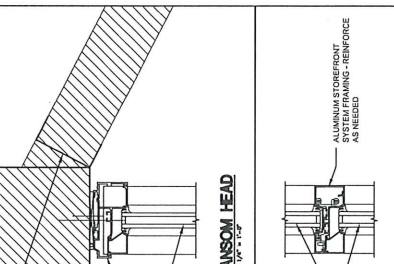
UP

EXISTING BUILDING CONSTRUCTION TO REMAIN
UNDISTURBED, UNDO

EXISTING CHASIS TO REMAIN
(NOT SHOWN FOR CLARITY)
BOTTOM TOP OF TRANSOM MULLION WITH
MATCH EXISTING ALUMINUM
STOREFRONT FRAMING, TYP.
EXISTING ADJACENT PANEL
LIMIT OF WORK
MATCH EXISTING
TO MATCH EXISTING

NOTES
1. GLASSING TO BE LIMITED TO MATCH
EXISTING.
2. GLASS, TINTED AT DOOR AND
NEW DARK BRONZE ANODIZED
INTERNAL STEEL REINFORCING AS
REQUIRED AS USED BY KAWNEER OR
APPROVED EQUAL.

SCALE: 1/4" = 1'-0"

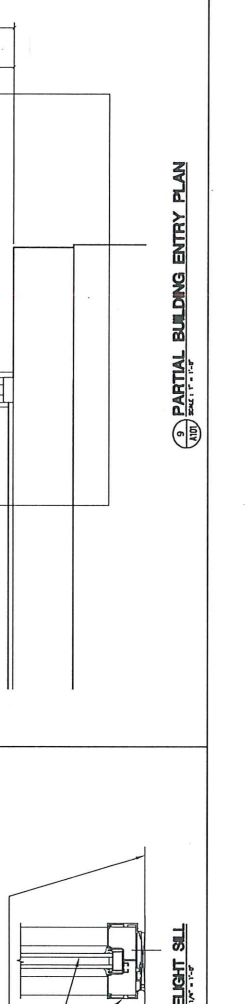


SELECTIVE FACADE
IMPROVEMENTS
HARVARD REAL ESTATE
14 STORY STREET
CAMBRIDGE, MA 02138

**PLAN, ELEVATION
AND DETAILS**

Project number
Date
Drawn by
Checked by
Scale

18107
05/14/18
RMS
GWS
A101
AS NOTED



190, 350 and 500 Standard Entrances

Single Source Packages
Generate Versatile
First Impressions



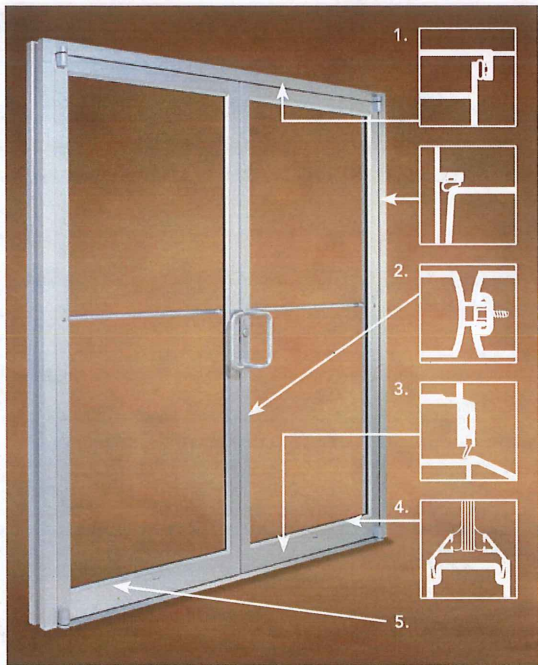
Garland Special Events Center, Garland, TX
Architect: HKS, Inc., Dallas, TX
Glazing Contractor: B & B Glass, Inc., Dallas, TX

Tough yet attractive, the clean lines of Kawneer's Standard Entrances are designed as a single-source package of door, door frame and hardware that is easily adaptable to custom requirements. Designed to complement new or remodel construction, modern or traditional architecture, they are engineered, constructed and tested to make good first impressions while withstanding the rigors of constant use by occupants and visitors.

Performance

To resist both lever arm and torsion forces that constantly act on any door, all three entrances feature welded corner construction with Sigma deep penetration and fillet welds plus mechanical fastenings at each corner – a total of 16 welds per door. Each door corner comes with a Limited Lifetime Warranty, good for the life of the door under normal use operation. It is transferable from building owner to owner and is in addition to the standard two-year warranty covering material and workmanship of each Kawneer Door.

 **KAWNEER**
AN ARCONIC COMPANY



1. Thermoplastic elastomer weatherstrip in blade-stop of frame jambs, header or transom bar.
2. Integral polymeric fin is attached to adjustable astragal creating an air barrier between pairs of doors.
3. Optional surface-applied bottom weatherstrip with flexible blade gasket. Extruded raised lip on threshold to provide a continuous contact surface for bottom weatherstrip.
4. Standard 1/4" beveled glass stops sheet glass and dirt off without leaving residue.
5. Available in all finishes offered by Kawneer.

The 190 Narrow Stile Entrance

- Is engineered for moderate traffic in applications such as stores, offices and apartment buildings
- Vertical stile measures 2-1/8"; top rail 2-1/4" and bottom rail 3-7/8"
- Results in a slim look that meets virtually all construction requirements

The 350 Medium Stile Entrance

- Provides extra strength for applications such as schools, institutions and other high traffic applications
- Vertical stiles and top rails measure 3-1/2"
- Bottom rail measures 6-1/2" for extra durability

The 500 Wide Stile Entrance

- Creates a monumental visual statement for applications such as banks, libraries and public buildings
- Vertical stiles and top rail are 5"; bottom rail measures 6-1/2"
- Results in superior strength for buildings experiencing heavy traffic conditions

Economy

Kawneer's Sealair™ bulb neoprene weatherstripping forms a positive seal around the door frame and provides a substantial reduction in air infiltration, resulting in improved comfort and economies in heating and cooling costs. The system is wear and temperature-resistant and replaces conventional weathering. Bottom weatherstrip at the interior contains a flexible blade gasket to meet and contact the threshold, enhancing the air and water infiltration performance characteristics.

For the Finishing Touch

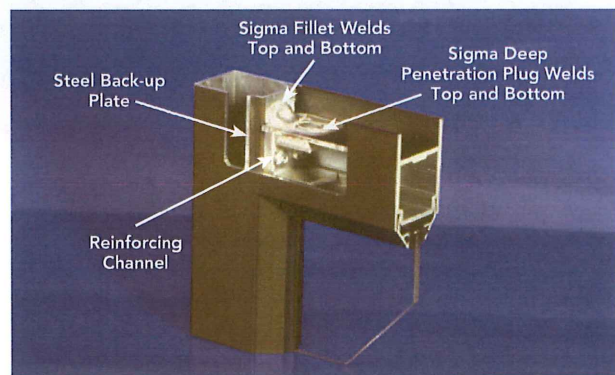
Architectural Class I anodized aluminum finishes are available in clear and Permanodic™ color choices.

Painted finishes, including fluoropolymer, that meet AAMA 2605 are offered in many standard choices and an unlimited number of specially designed colors.

Solvent-free powder coatings add the green element with high performance, durability and scratch resistance that meet the standards of AAMA 2604.

General

- Heights vary to 10'; widths range from approximately 3' to 4'
- Door frame face widths range to a maximum of 4", while depths range to 6"
- Door operation is single or double-acting with maximum security locks or Touch Bar Panics standard
- Architect's Classic one inch round, bent bar push/pull hardware is available in various finishes and sizes
- Infills range from under 1/4" to more than 1"



Kawneer Company, Inc.
Technology Park / Atlanta
555 Guthridge Court
Norcross, GA 30092

kawneer.com
770 . 449 . 5555

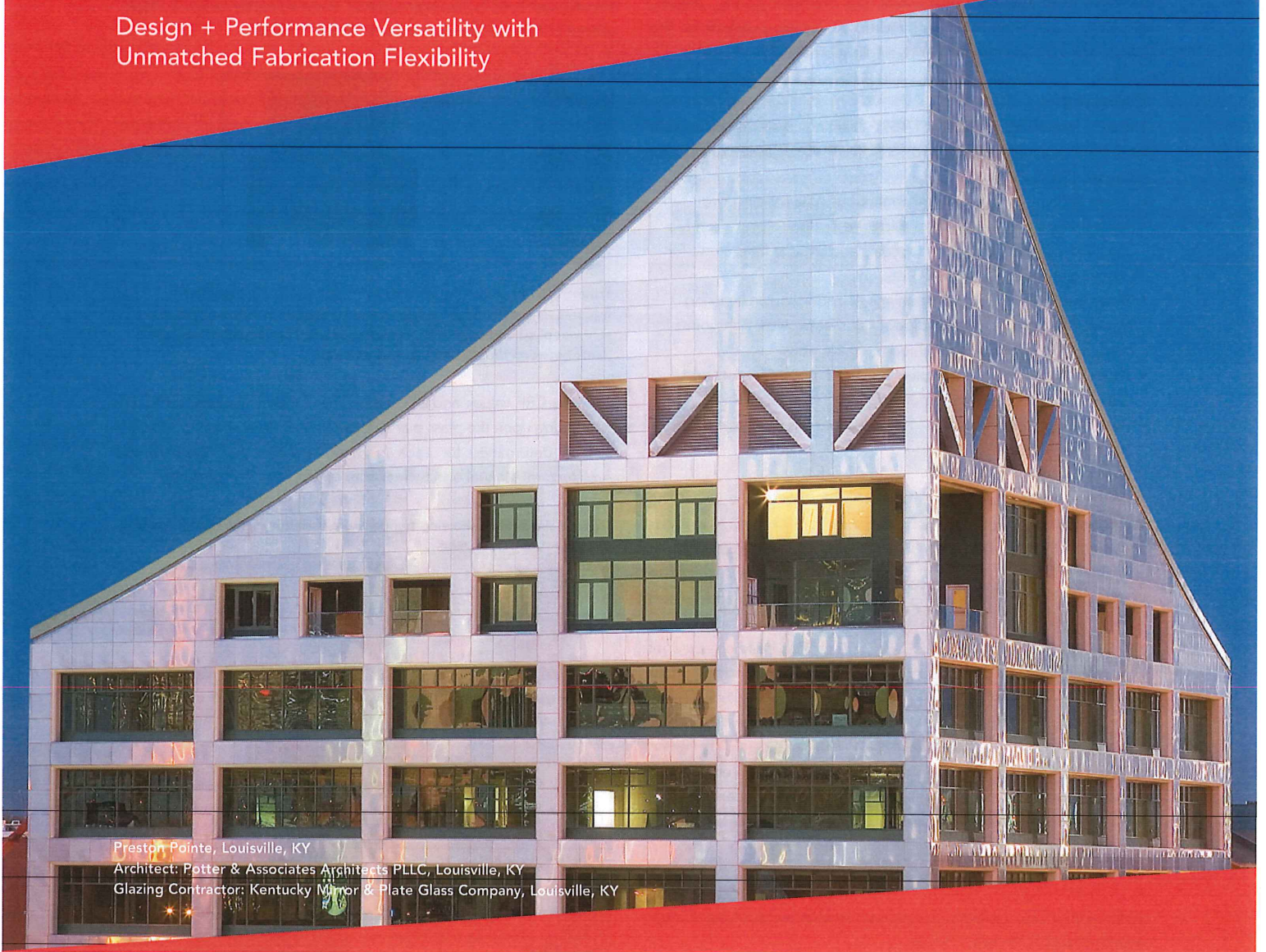
KAWNEER
AN ARCONIC COMPANY



Trifab™ VG (VersaGlaze™)

Trifab™ VG 450, 451 & 451T (Thermal) Framing Systems &
Trifab™ 451UT (Ultra Thermal) Framing System

Design + Performance Versatility with
Unmatched Fabrication Flexibility



Preston Pointe, Louisville, KY
Architect: Potter & Associates Architects PLLC, Louisville, KY
Glazing Contractor: Kentucky Mirror & Plate Glass Company, Louisville, KY

Trifab™ VersaGlaze™ is built on the proven and successful Trifab™ platform – with all the versatility its name implies. There are enough framing system choices, fabrication methods, design options and performance levels to please the most discerning building owner, architect and installer. The Trifab™ VersaGlaze™ family's newest addition, Trifab™ 451UT (Ultra Thermal) framing system, is designed for the most demanding thermal performance and employs a "dual" Isolock™ Thermal Break.

Aesthetics

Trifab™ VersaGlaze™ framing systems offer designers a choice of front-, center-, back- or multi-plane glass applications. Structural silicone glazing (SSG) and Weatherseal glazing options further expand the designers' choices, allowing for a greater range of design possibilities for specific project requirements and architectural styles. All systems have a 4-1/2" frame depth – Trifab™ VersaGlaze™ 450 has 1-3/4" sightlines, while Trifab™ VersaGlaze™ 451/451T and Trifab™ 451UT have 2" sightlines.

With seamless incorporation of Kawneer entrances or windows, including GLASSvent™ visually frameless ventilators, Trifab™ VersaGlaze™ can be used on almost any project. These framing systems can also be packaged with Kawneer curtain walls and overhead glazing, thereby providing a full range of proven, and tested, quality products for the owner, architect and installer from a single source supplier.

Economy

Trifab™ VersaGlaze™ 450/451/451T framing systems offer four fabrication choices to suit your project (Trifab™ 451UT available as screw spline fabrication only):

- **Screw Spline** – for economical continuous runs utilizing two piece vertical members that provide the option to pre-assemble units with controlled shop labor costs and smaller field crews for handling and installation.
- **Shear Block** – for punched openings or continuous runs using tubular moldings with shear block clips that provide tight joints for transporting large pre-assembled multi-lite units.
- **Stick** – for fast, easy field fabrication. Field measurements and material cuts can be done when metal is on the job.
- **Type B** – Same fabrication benefits as shear block except head and sill run through.

All systems can be flush glazed from either the inside or outside. The Weatherseal option provides an alternative to SSG vertical mullions for Trifab™ VersaGlaze™ 450/451/451T. This ABS/ASA rigid polymer



Brighton Landing, Cambridge, MA
Architects: ADD Inc., Cambridge, MA
Glazing Contractors: Ipswich Bay Glass Company, Inc., Rowley, MA

extrusion allows complete inside glazing and creates a flush glass appearance on the building exterior without the added labor of scaffolding or swing stages. Additionally, High-Performance (HP) Flashing options are engineered to eliminate perimeter sill fasteners and associated blind seals.

For the Finishing Touch

Architectural Class I anodized aluminum finishes are available in clear and Permanodic™ color choices.

Painted finishes, including fluoropolymer, that meet AAMA 2605 are offered in many standard choices and an unlimited number of specially designed colors.

Solvent-free powder coatings add the green element with high performance, durability and scratch resistance that meet the standards of AAMA 2604.

Kawneer Company, Inc.
Technology Park / Atlanta
555 Guthridge Court
Norcross, GA 30092

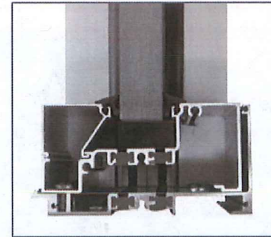
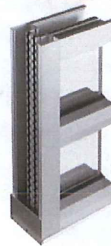
kawneer.com
770 . 449 . 5555

© Kawneer Company, Inc. 2007–2017 LITHO IN U.S.A. Form No. 17-2289.a
Trifab™, VersaGlaze™, Insulclad™ and Permanodic™ are trademarks of Kawneer Company, Inc.



Performance

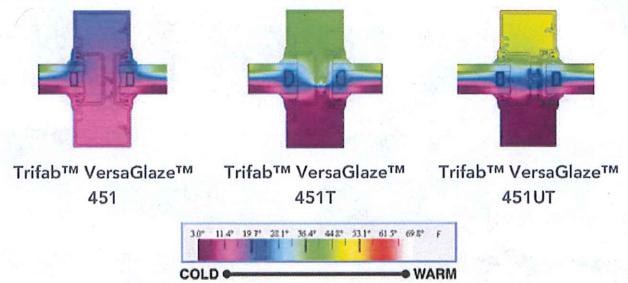
Kawneer's Isolock™ Thermal Break process creates a composite section, prevents dry shrinkage and is available on Trifab™ VersaGlaze™ 451T. For even greater thermal performance, a "dual" Isolock™ Thermal Break is used on Trifab™ 451UT.



Trifab™ 451UT uses a "dual" Isolock™ Thermal Break (right) and features a new HP (High Performance) sill design, which incorporates a screw-applied end dam (left), ensuring positive engagement and tight joints between the sill flashing and end dam.

U-factor, CRF values and STC ratings for Trifab™ VersaGlaze™ vary depending upon the glass plane application. Project specific U-factors can be determined for each individual project. (See the Kawneer Architectural Manual or Kawneer.com for additional information).

Thermal simulations showing temperature variations from exterior/cold side to interior/warm side.

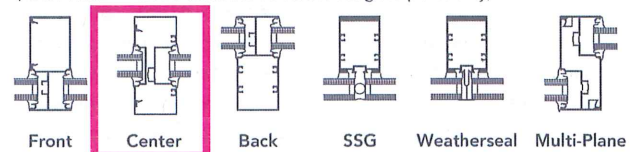


PERFORMANCE TEST STANDARDS

Air Infiltration	ASTM E 283
Water	AAMA 501, ASTM E 331
Structural	ASTM E 330
Thermal	AAMA 1503
Thermal Break	AAMA 505, AAMA TIR-A8
Acoustical	AAMA 1801, ASTM E 1425

Trifab™ VersaGlaze™ 450/451/451T glazing options

(note: Trifab™ 451UT available as center set glass plane only).



KAWNEER
AN ARCONIC COMPANY

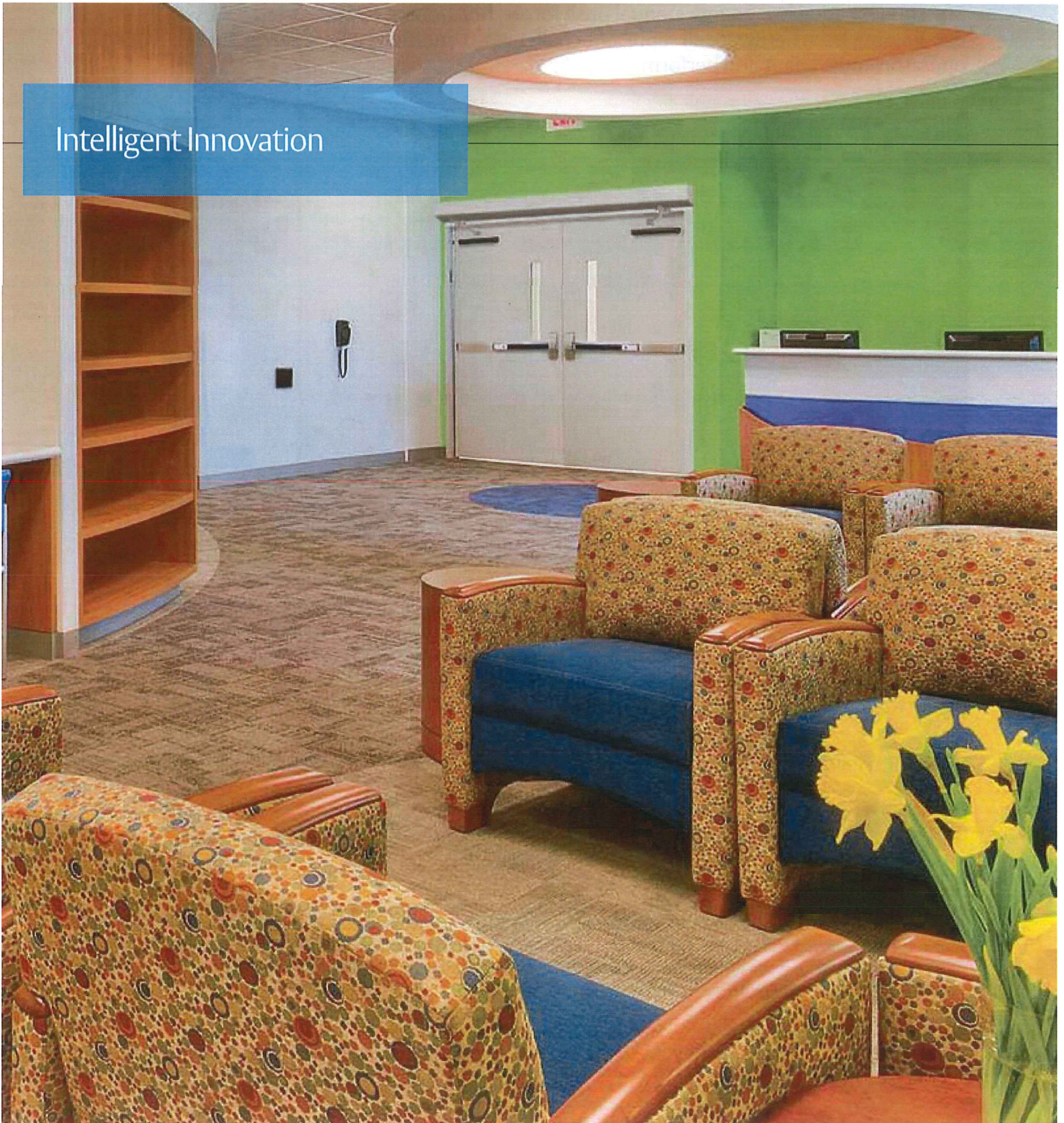
Swing Door Besam SW200i™

ASSA ABLOY

ASSA ABLOY Entrance Systems

The global leader in
door opening solutions

Intelligent Innovation



The simple solution to all swing door challenges

If you design or manage facilities with automatic swing doors, you know there are several issues to address. Closing against wind conditions, encountering interior stack pressure, meeting low energy manual push forces, functioning to pedestrian codes or overcoming latch hardware all represent challenging conditions where swing door operators must adapt and perform.



By creating a single operator with flexibility to perform well in varying environments and conditions, ASSA ABLOY Entrance Systems made the specification, design, and selection process significantly easier. And because

the Besam SW200i delivers proven performance for a number of different configurations, it provides facilities with more solutions and even greater flexibility.



**ENERGY
EFFICIENT**

Separate Time Delay
Power Surge Protection
Brown Out Performance

**AIR PRESSURE
MANAGEMENT**

Stack Pressure Compensation
Intelligent Trajectory Control
Extended Closing Torque (ECT)

SECURE LATCH

Latch Retry
Electric Lock Management
Security Integration
Astragal Coordination

EASY OPEN

Manual Push Forces
of 5-15 lbf
Power Assist

**MAXIMUM
STRENGTH**

700 Pounds Max Door Weight

Proven performance in the most demanding environments

AIR PRESSURE MANAGEMENT

Stack Pressure Compensation

Allows for door to adjust to changes in variable pressures by utilizing the Besam SW200i exclusive Intelligent Trajectory Control and Extended Closing Torque (ECT).

Intelligent Trajectory Control

The Besam SW200i knows where the door should be at all times and adjusts torque accordingly through dynamic braking which helps cushion the door during the opening or closing cycles.

Extended Closing Torque (ECT)

The last 10 degrees of the closing cycle is the most challenging for a swing door operator, Besam's exclusive Extended Closing Torque (ECT) functionality provides extra torque, if needed, to close and latch the door. Speed remains constant so the door stays within ANSI standards.

EASY OPEN

Manual Push Forces of 5-15 lbf

Easy to push open manually, yet strong enough to close and latch despite wind or air pressure.

Power Assist

Makes a heavy door (or spring) feel light.

MAXIMUM STRENGTH

700 Pounds Max Door Weight

The BesamSW200i can handle door weights of up to 700 pounds per operator.

SECURE LATCH

Latch Retry

If the door does not latch when closing, the Besam SW200i will detect this condition and immediately open the door to 10 degrees and execute two attempts to latch the door.

Electric Lock Management

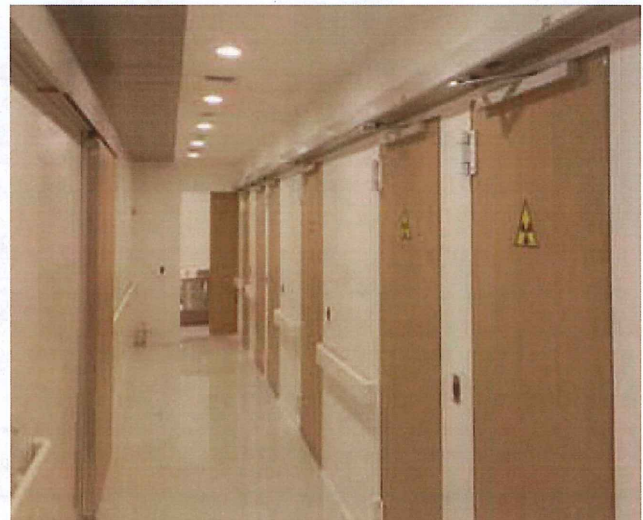
Features latch retry and electric lock management that momentarily reverses the closed door before opening to insure lock release. Monitors locks if equipped with that functionality.

Security Integration

The Besam SW200i operator knows when the door is closed and can provide a signal for security monitoring.

Astragal Coordination

On-board electronic coordinator controls that doors always close in right order and can therefore be properly locked. Coordinator allows door with astragal to open first, close last. If in hold open, door without astragal will not pass door with astragal.



Fits where you need it

FLEXIBILITY AND VALUE

On-Board Functionality

The Besam SW200i has on-board capabilities such as timing sequencing, transformer, astragal coordination and Extended Closing Torque (ECT).

Adaptable for Multiple Uses

One operator can handle all your facility needs – wind conditions, pedestrian usage, low energy, manual use, etc.

Battery Back-up

The optional battery back-up system allows for continued operation after power fails.

ENERGY EFFICIENT

Separate Time Delay

The Besam SW200i includes two time delays for separate devices (i.e., standard activation, key activation). If a device is located further than another, separate opening/closing times can be set to best maximize operation, enhance security and reduce air infiltration.

Power Surge Protection

The Besam SW200i operator can handle variances in power without damage to the unit or impact to performance.

Brown Out Performance

The operator can adjust to dips in power and continue to operate from 85V – 264V.

Low Energy Consumption

Four operators can run on one 20 amp line – saving you energy.

Directional Sensors

Units equipped with directional sensors reduce air infiltration by allowing less time with the door open.

SERVICE SAVINGS

Adapting to Changing Needs

Air flow can change in a building as configurations evolve (new doorways, rooms, HVAC systems, etc.). Other operators can change performance in these situations and require a service call for adjustment. The Besam SW200i adapts to changing environments, thereby saving you the cost of service calls for these necessary adjustments.

Non-volatile Memory

When the power goes out, other operators can go through a relearn mode. The Besam SW200i retains its memory even after a power loss, providing you with more consistent performance and consistent opening and closing.

Fuseless Technology

No fuses to replace allows for consistent performance and reduces service call requirements and costs.

A clear advantage over the competition




Attribute	Besam SW200i	Others
MAX WEIGHT OF DOOR	700 lbs	200-350 lbs
MANUAL PUSH FORCES OF 5 TO 15 LBF	•	
AUTOMATICALLY COMPENSATES FOR STACK PRESSURE	•	
ON-BOARD EXTENDED CLOSING TORQUE (ECT)	•	
ON-BOARD TRANSFORMER	•	
ON-BOARD TIMING SEQUENCER	•	
AUTOMATICALLY MEASURES INERTIA AND WEIGHT OF DOOR DURING SET-UP	•	

A full line of sensor solutions

Swing doors complying with pedestrian standards have varying needs and requirements. When complying with ANSI A156.10 standard for power operated pedestrian doors, the Besam SW200i is available with three Besam i-Adapt sensor packages. Choose the package that's right for you.

Besam SW200i i-Adapt Sensor Systems

Offering three levels of coverage to exceed ANSI A156.10*

I-ADAPT FLEX 101	I-ADAPT FLEX 102	I-ADAPT PREMIUM 202
		
<p>Door mounted presence sensor (swing side)</p> <p>Overhead presence sensor</p>	<p>Door mounted presence sensor (swing & approach side)</p> <p>Overhead presence sensor</p>	<p>Door mounted presence sensor with adaptive field (swing & approach side)</p>

*Activation devices available separately

Keeping your entrances up-to-date



To meet evolving safety standards and keep your equipment operating in top condition, there's no better partner than ASSA ABLOY Entrance Systems. Our swing door operators are backed by comprehensive service and expert technicians. With a carefully selected stock of service parts, our certified technicians can maintain, service and upgrade not only Besam equipment, but all brands. They can be counted on for expert advice and quick dispatch in the event of an emergency...24/7.



Flexible configurations for any application

The Besam SW200i is available in a variety of configurations, sizes and finishes to suit the requirements of any project. Consult with an ASSA ABLOY Entrance Systems automatic door specialist to determine the best equipment, configuration, and layout to help you achieve code compliance, maximize energy efficiency and optimize traffic flow.



Surface Mount

The Besam SW200i in surface mount configuration is ideal for new construction or retrofit applications...easily transforming your existing manual doors to automatic door convenience. Featuring advanced technology such as stack pressure compensation, compliance with both ANSI A156.10 and A156.19, secure latching and easy to use manual push forces, it's the only swing door operator you need.



Overhead Concealed

The Besam SW200i-OHC provides an aesthetically pleasing solution that is attractive and incomparably strong. The intelligent door operator features advanced technology that ensures smooth, gentle operation across a wide range of conditions.



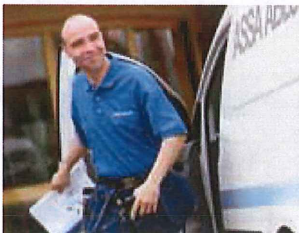
Overhead Concealed with Door Package

The Besam SW200i-OHC with door package provides the convenience of an aluminum door package powered by the innovative features of the Besam SW200i operator. Aesthetics, strength and flexibility make this an ideal door package for many needs.



In Ground

The Besam SW200i-IG provides reliable in ground mounting provided as a complete system: the powerful Besam SW200i operator, moisture resistant enclosure and adaptability to multiple arm systems to provide you with the utmost in flexibility.



Pro-Active Care Service

Keep your doors at optimal performance levels with ASSA ABLOY Entrance Systems Pro-Active Care Service. We offer upgrades and modernization of existing swing equipment to Besam SW200i performance.



Application Expertise

Code compliance, sensor selection, access control integration...consult the experts at ASSA ABLOY Entrance Systems to help you design or configure your entrance or corridor to your specific needs.

ASSA ABLOY Entrance Systems is a leading supplier of entrance automation solutions for efficient flow of goods and people. With our globally recognized product brands Besam, Crawford, TKO, Albany and Megadoor, we offer products and services dedicated to satisfying end-user needs for safe, secure, convenient and sustainable operations. ASSA ABLOY Entrance Systems is a division within ASSA ABLOY.

assaabloyentrance.us • assaabloyentrance.ca



Technical data subject to change without notice.

©ASSA ABLOY Entrance Systems AB|PLSW200|CAN-USA-EN-1.0|1411



ASSA ABLOY Entrance Systems

Tel: 1-866-237-2687 (US) • 1-888-608-9242 (Canada)
info.na.besam@assaabloy.com
assaabloyentrance.us • assaabloyentrance.ca

Follow us:



Please enter ASSA ABLOY Entrance in the channel's search field.