

RECEIVED

JUN 21 2018



CAMBRIDGE HISTORICAL COMMISSION

831 Massachusetts Avenue, 2nd Fl., Cambridge, Massachusetts 02139
Telephone: 617 349 4683 TTY: 617 349 6112
E-mail: histcomm@cambridgema.gov URL: www.cambridgema.gov/Historic

CAMBRIDGE HISTORICAL COMMISSION

APPLICATION FOR CERTIFICATE

1. The undersigned hereby applies to the Cambridge Historical Commission for a Certificate of (check one box): Appropriateness, Nonapplicability, or Hardship, in accordance with Chapter 40C of the Massachusetts General Laws and/or Chapter 2.78 of the Municipal Code.
2. Address of property: 50 MAGAZINE ST, Cambridge, Massachusetts
3. Describe the proposed alteration(s), construction or demolition in the space provided below: (An additional page can be attached, if necessary).

- REPLACE WINDOWS IN FOUNDATION WITH VINYL WINDOWS

- REPLACE 2 WINDOWS IN STONE WALL WITH ALUMINUM CLAD WOOD WINDOWS

- REPLACE DOUBLE ENTRY DOORS WITH NEW MATTOGAN DOUBLE DOORS

- REPLACE SIDING TO MATCH ORIGINAL

- REPAIR TRIM OR REPLACE TO MATCH ORIGINAL

I certify that the information contained herein is true and accurate to the best of my knowledge and belief. The undersigned also attests that he/she has read the statements printed on the reverse.

Name of Property Owner of Record: CHRISTIAN MISSION PENTECOSTAL TABERNACLE OF CAMBRIDGE

Mailing Address: 77 COLUMBIA ST, CAMBRIDGE MA 02139

Telephone/Fax: 617-661-0222 E-mail: mail@ptspice.org

⇒ Signature of Property Owner of Record: [Signature]
(Required field; the application will not be considered complete without the property owner's signature)

Name of proponent, if not record owner: Kerry Coyne

Mailing Address: 123 Parker St Watertown MA 02472

Telephone/Fax: 512-922-1705 E-mail: kerry.coyne@gmail.com

(for office use only):

Date Application Received: 6/21/18 Case Number: 3970 Hearing Date: 7/12/18

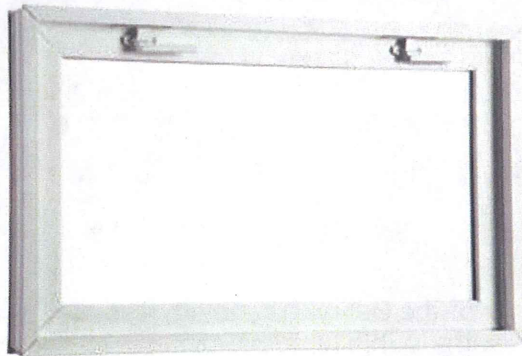
Type of Certificate Issued: _____ Date Issued: _____

Christian Mission Pentecostal Tabernacle of Cambridge
 Application for Certificate of Appropriateness
 DOORS AND WINDOWS

The Christian Mission Pentecostal Tabernacle of Cambridge proposes replacing the basement windows in the foundation and replacing the 3 sets of double entry doors at the 56 Magazine Street Location.

The windows are currently damaged and broken, and at grade which poses security and water infiltration risks. The exiting metal doors are rusting and the lock mechanism is no longer able to attach to the door properly on the main door.

The proposed windows in the foundation on the side of the building are vinyl hoppers. In addition to the description below, a cut sheet and brochure are attached.

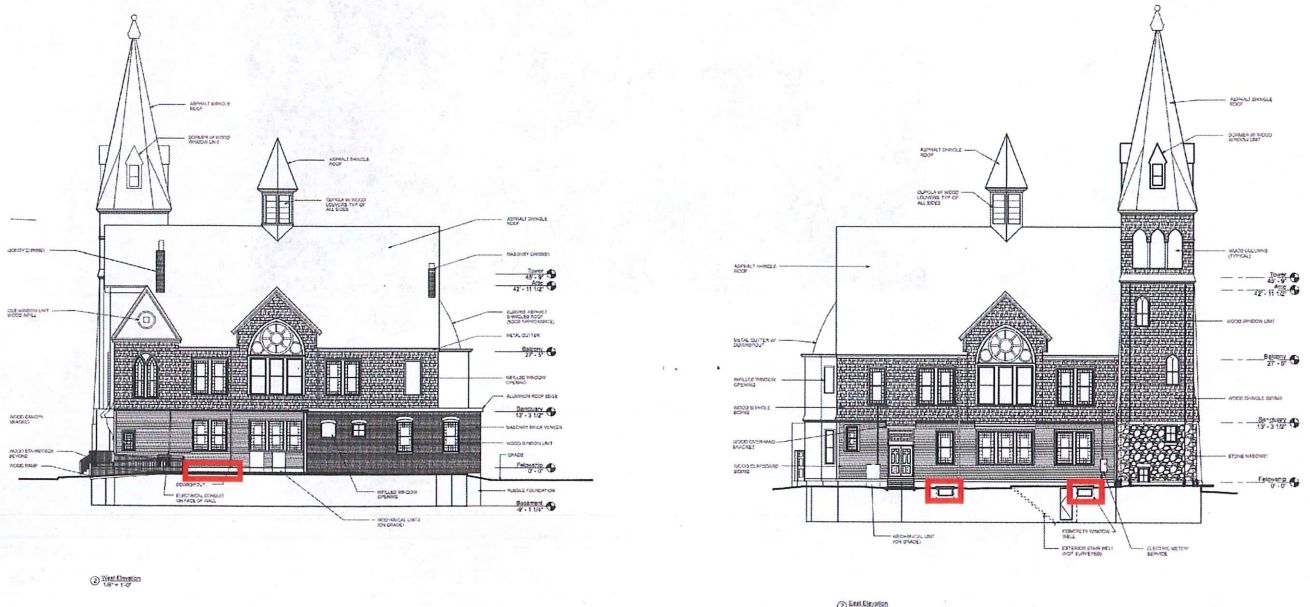


Hopper

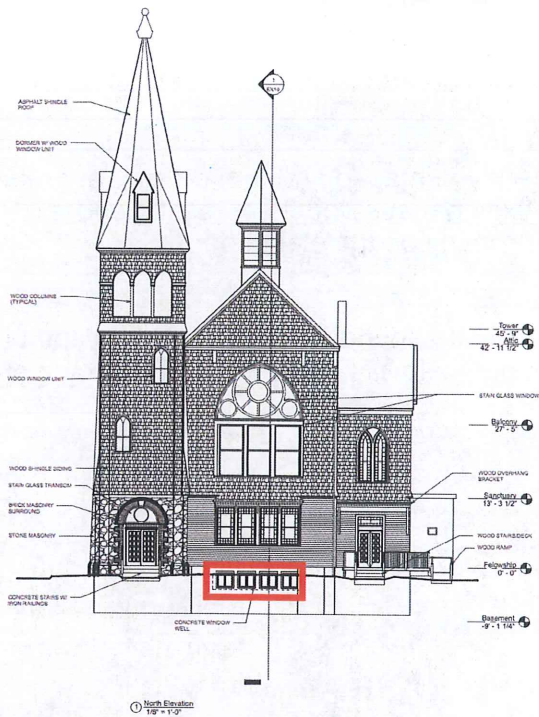
The Harvey hopper window is an excellent choice for basement applications. The hopper includes a full screen and is custom made to fit your opening.

- ENERGY STAR® qualified with optional ENERGY STAR glazing package upgrade
- Fiberglass screen
- Available with BetterGrain® interior wood grain finishes

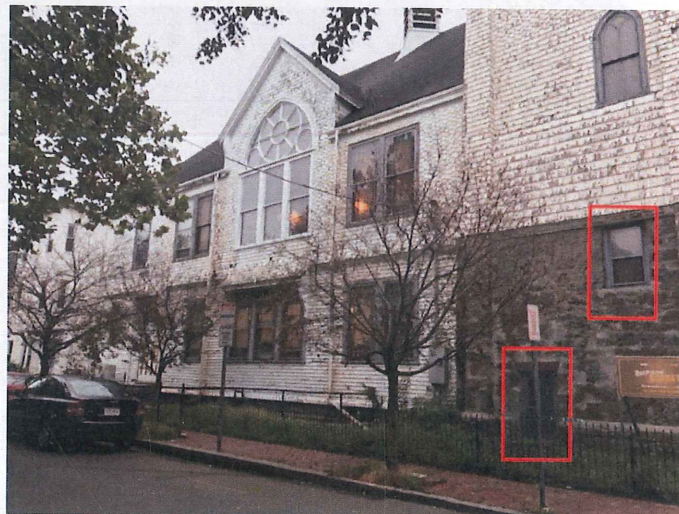
The diagram below illustrates the 4 locations for the proposed new vinyl windows. They are located in window wells that have recently been repair or replaced.



Christian Mission Pentecostal Tabernacle of Cambridge
Application for Certificate of Appropriateness
DOORS AND WINDOWS



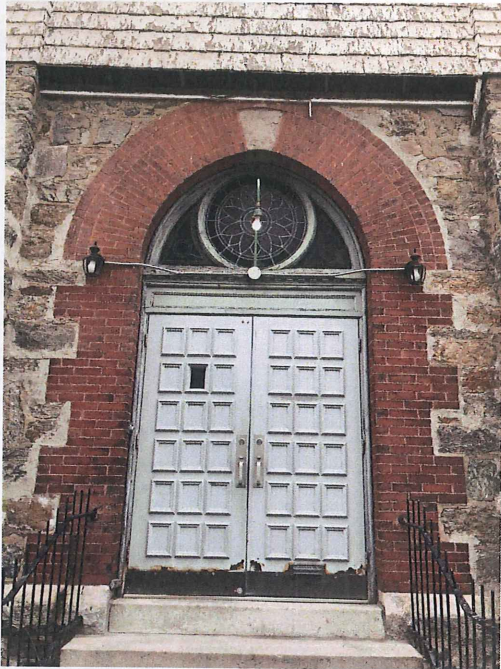
There are two windows located in the stone wall at the base of the Belfry. These are also in poor condition. The church is proposing to replace these with double hung aluminum exterior, wood interior windows. This photo shows the location of these 2 windows.



In addition to the description below, a brochure is attached.

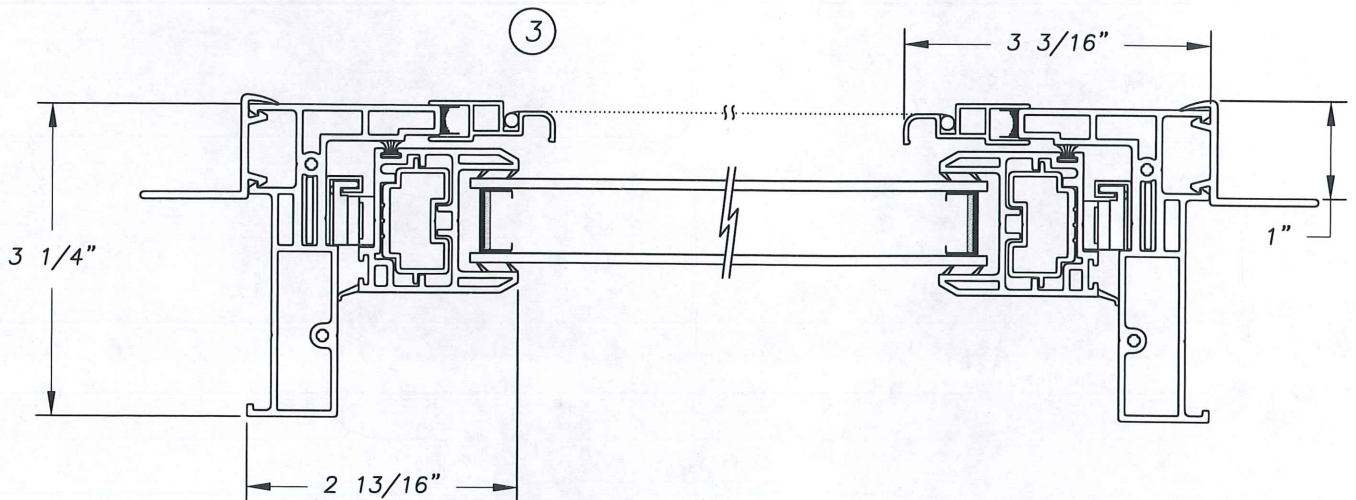
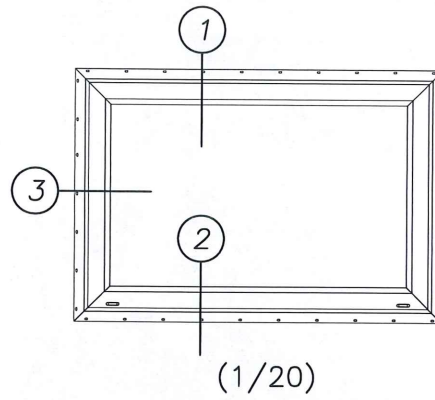
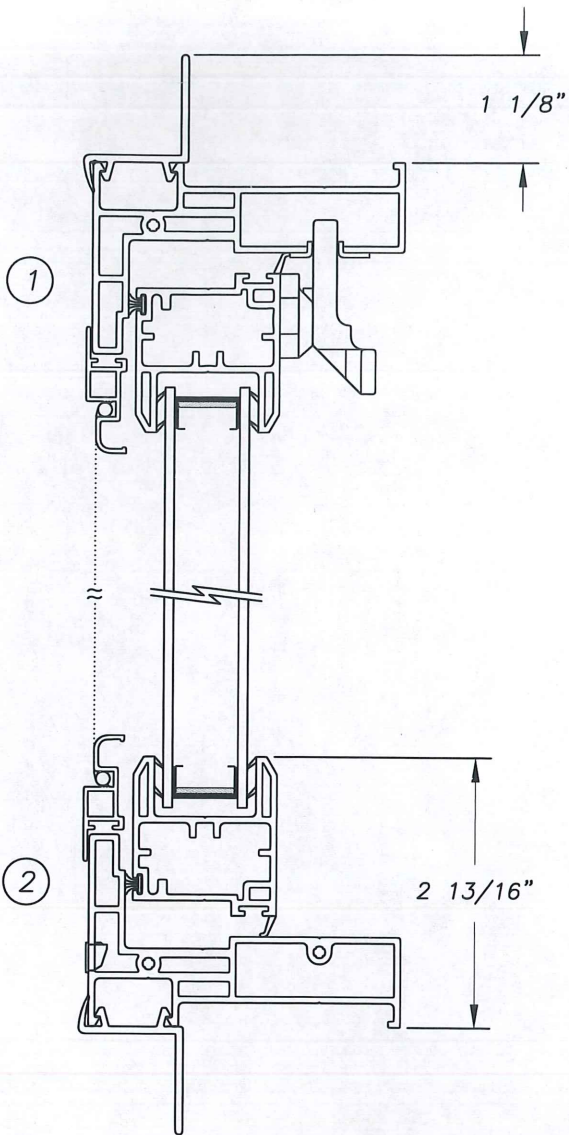
Christian Mission Pentecostal Tabernacle of Cambridge
Application for Certificate of Appropriateness
DOORS AND WINDOWS

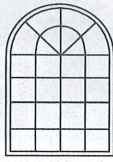
One set of double doors is located on the Perry side and two sets are located on the Magazine side of the church. None are original and all are in poor condition. The photograph on the left is the of the main front door, in the base of the belfry. The photograph on the right is a sample mahogany door from the proposed fabricator.



The doors being proposed are the same width, the height is taller so that the panel across the doors can be removed, and will be stain grade mahogany to be finished with a clear coat. The cut sheet is attached

Harvey Industries, Inc.
Vicon Hopper Window
With L-Fin
(1/2 Scale)



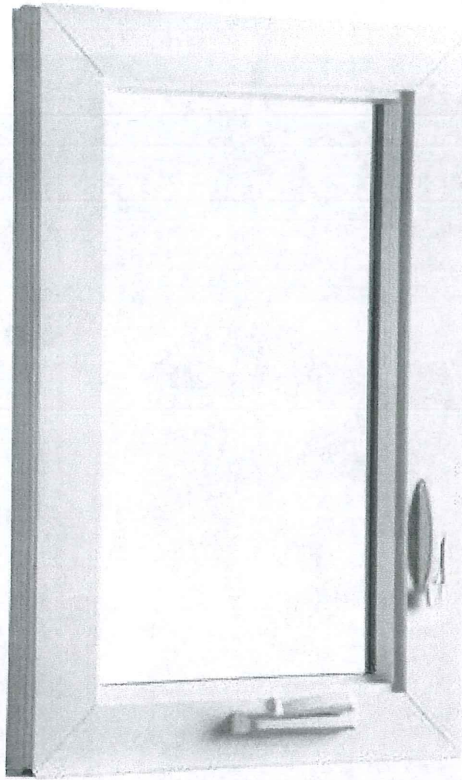
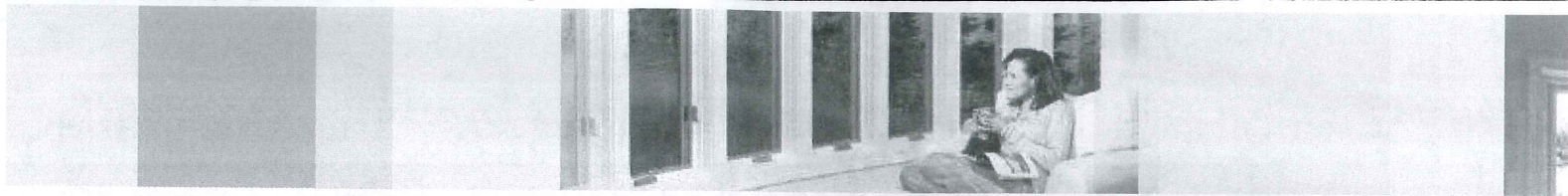


HARVEY
BUILDING PRODUCTS

Accessory Windows

Replacement and New Construction

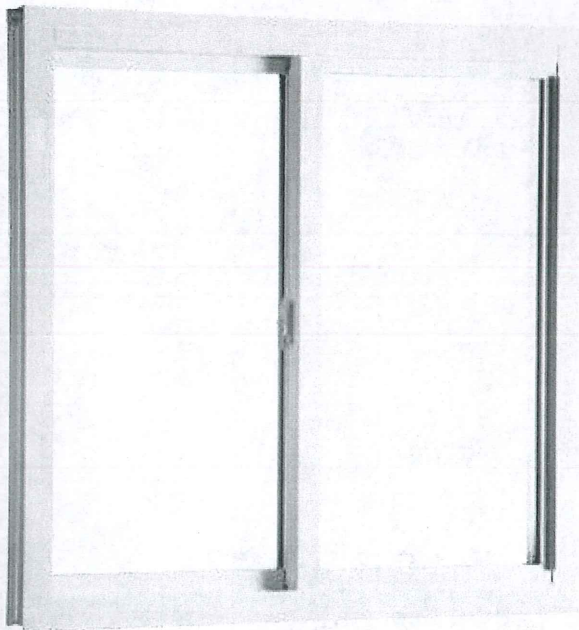




Casement

Things couldn't be easier with our beautiful and functional vinyl casement windows. There's no need to stretch to reach a top lock because the window unlocks with one easy-to-reach latch. Available in single or multi-unit combinations, our casement windows offer smooth operation and maximum ventilation. Add a breath of fresh air to any room in your house with a Harvey vinyl casement window.

- ENERGY STAR® qualified with optional ENERGY STAR glazing package upgrade
- Single latch, multi-point locking system on casement secures window in multiple locations
- Window opens to a 90° angle for easy cleaning from the inside
- Optional simulated double hung meeting rail
- Available with BetterGrain® interior wood grain finishes



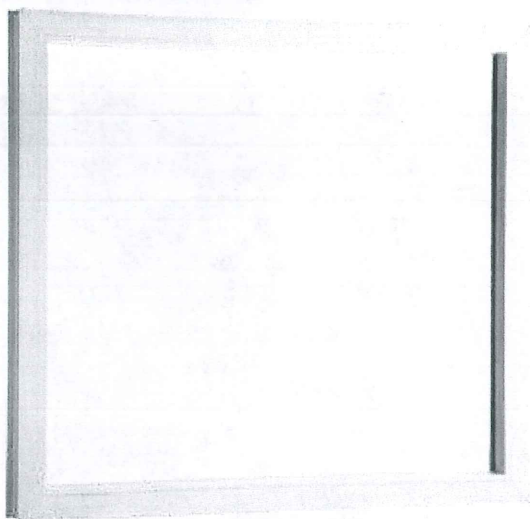
Rolling

Our rolling windows are easy to operate and an ideal choice for porches, family rooms, additions, multi-unit apartments buildings, condominiums and more. They operate with fingertip ease on a set of rollers. A half screen is included and a full screen is optional.

- ENERGY STAR® qualified with optional ENERGY STAR glazing package upgrade
- Fully welded sash and frame
- Double locks on windows with opening height of 36-3/8" or greater
- Available with BetterGrain® interior wood grain finishes



Rolling windows and transoms



Picture

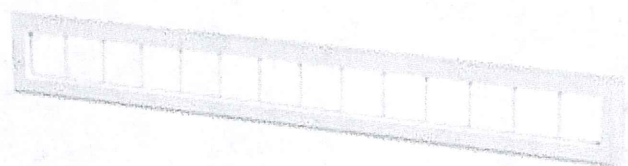
Take in the great outdoors with our picture window. Use by itself or combine with casement and/or double hung windows for more sweeping views and greater air circulation.

- ENERGY STAR® qualified with optional ENERGY STAR glazing package upgrade
- Available with BetterGrain® interior wood grain finishes

Garage Door Transoms

With our garage door transoms, you can enhance the look of your garage with a window that's both functional and decorative. Garage door transoms are a great way to let in natural light and add a traditional touch to your home.

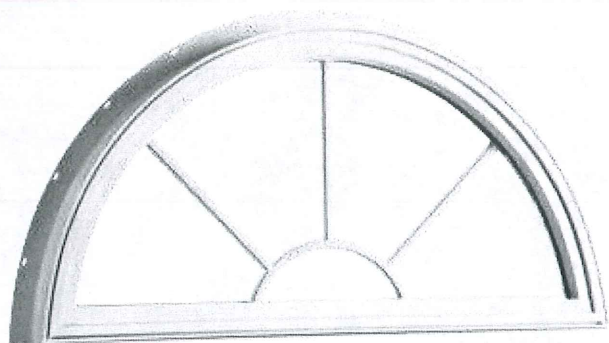
- Standard with clear insulated glass
- Patio door transom vertical rail available
- Available with BetterGrain® interior wood grain finishes

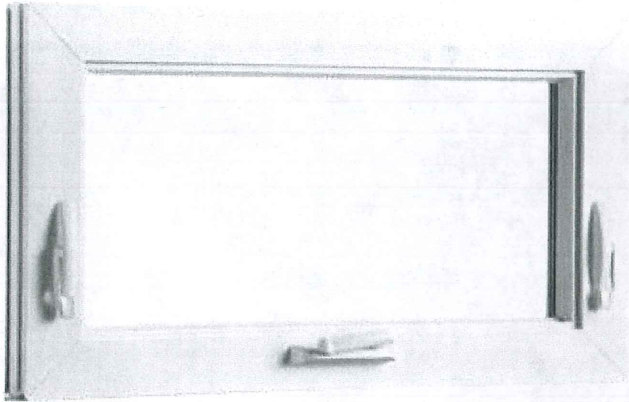
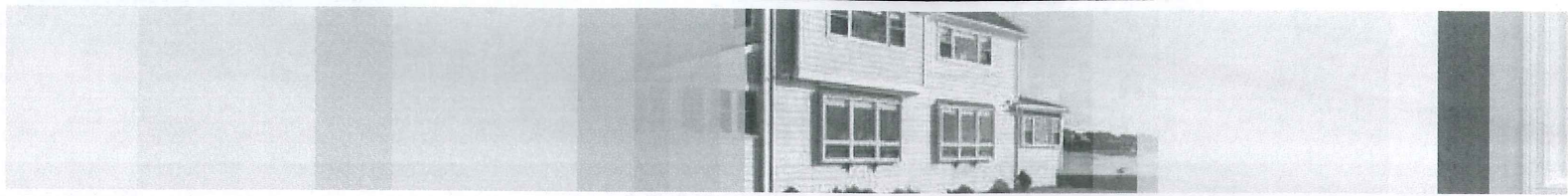


Custom Shapes

Thanks to our special vinyl forming process, you can add variety and individuality to your home with custom shapes. Our specialty shapes, including octagons, triangles, roundtops and full circles, offer unlimited opportunities to customize your windows. We also offer numerous grid options to enhance your interior design possibilities. Wood and PVC trim can be specified on any specialty window for added value and beauty.

- ENERGY STAR® qualified with optional ENERGY STAR glazing package upgrade
- Available with BetterGrain® interior wood grain finishes
- Many styles and grid configurations are available, including half-round, quarter round, oval, elliptical, segmental, extended segmental and geometric shapes

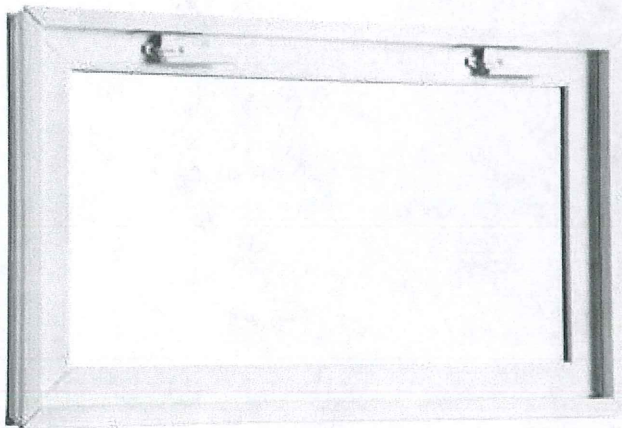




Awning

The unique style and impressive ventilation of the awning window has made it a popular product in newly remodeled homes. This window opens outward from the bottom by turning the compact folding handle. Spice up a larger opening with an awning window mulled below a picture window.

- ENERGY STAR® qualified with optional ENERGY STAR glazing package upgrade
- Fiberglass screen
- Available in fixed or venting units
- Available with BetterGrain® interior wood grain finishes



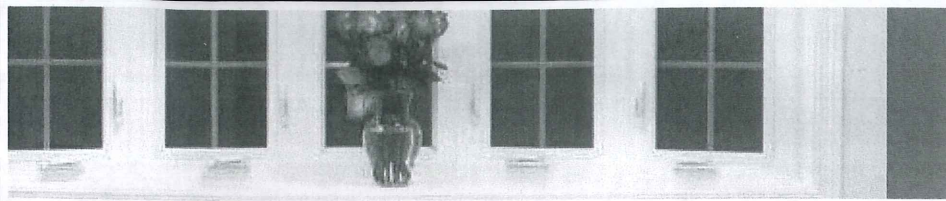
Hopper

The Harvey hopper window is an excellent choice for basement applications. The hopper includes a full screen and is custom made to fit your opening.

- ENERGY STAR® qualified with optional ENERGY STAR glazing package upgrade
- Fiberglass screen
- Available with BetterGrain® interior wood grain finishes



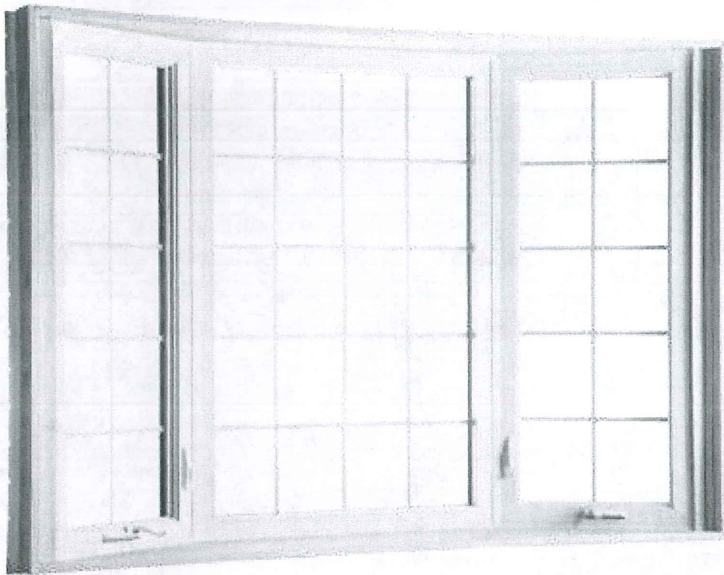
Picture windows mulled to awnings for a truly unique and charming look



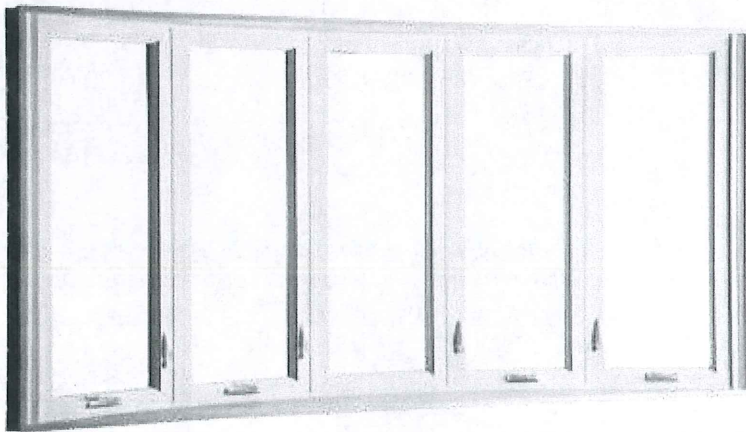
Bay & Bow

Vinyl bay windows combine traditional style with the convenience of maintenance-free vinyl at either 30° or 45° angles. Vinyl bow windows appear more rounded in projection as they are comprised of windows at a 10° angle. They are both available using casement or picture windows as well as Tribute, Classic and Slimline double hung windows.

- Custom manufactured to fit virtually any opening
- Factory assembled for easy installation
- No exposed joints or caulking on exterior of unit
- "L" style nail fin along jambs
- Head & insulated seat boards available in oak or birch veneer
- Cable support system included and required for all bay and bow windows
- Multi-point lock on all casements
- All roof systems are fully framed and sheathed in 1/2" plywood
- Available with BetterGrain® interior wood grain finishes



Vinyl bay window



Vinyl bow window

Custom Roof Systems

Top your bay or bow window off with a custom roof system from Harvey Building Products. Systems are supplied as a one-piece unit ready for installation. Choose from genuine copper, painted aluminum or structural roofs that are ready to be finished with asphalt or wood shingles.

Painted Aluminum
Roof Colors:



White



Coppertone



Patina

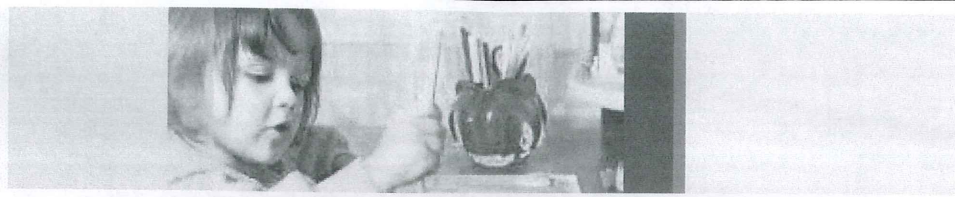


Bronze

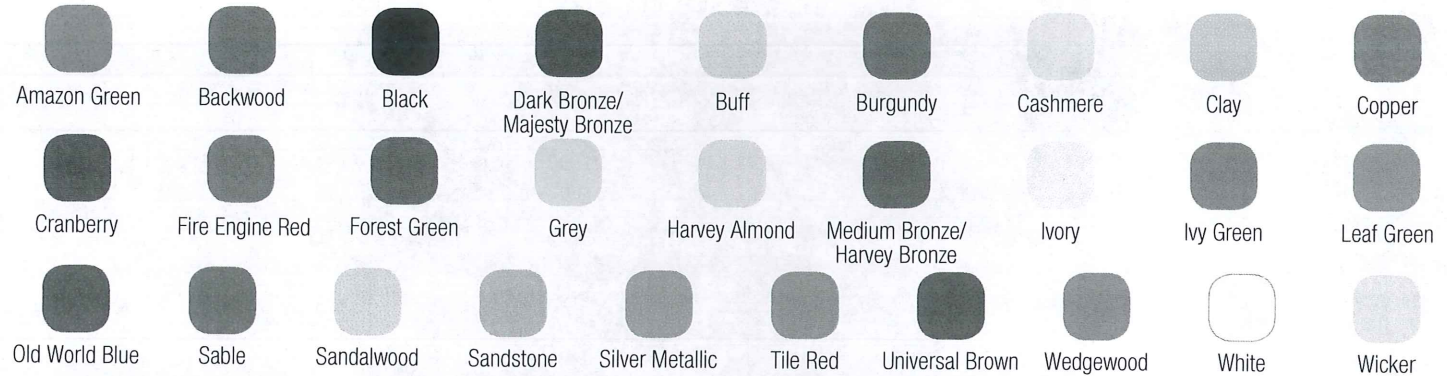


Vinyl bay window using picture and double hungs with genuine copper roof

Design Options



Exterior Finishes



Vinyl Colors



BetterGrain® Interior Finishes



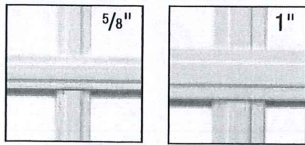
Exterior finishes are available for White or Almond windows only. White and Almond are clear-through vinyl colors. Due to printing limitations, finishes and colors shown are for representation only.

Glazing Options

- Clear Insulated
- ENERGY STAR
- High Performance
- Low-E
- Low-E/Argon
- Double Low-E/Argon
- Triple Glazing
- Obscured
- Tempered

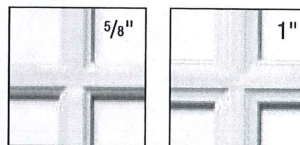
Grids

Contoured GBG (Grids Between Glass)



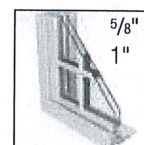
Color-Matched Color-Matched

Exterior Grid Package



Color-Matched Color-Matched
(Not available on hopper or shapes)

Simulated Divided Lites



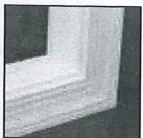
Interior Applied, GBG and Exterior Applied

Grid Configurations

- Colonial
- Prairie
- Custom configurations available

Not all grid styles and configurations available for each product. Ask your local contractor or visit harveybp.com for details.

Interior Trim Kits



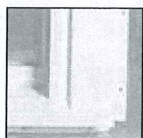
2-1/4" Beaded Col.



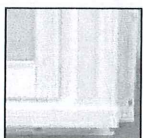
3-1/2" Windsor

Harvey interior trim kits provide a precision fit and quality workmanship. Kits are available in seven popular profiles in either clear or pre-primed pine.

Exterior Casing



3" flat with sill nose



908 with sill nose

To enhance the beauty of your window, Harvey also offers maintenance-free vinyl exterior casing. The factory-applied casing with fusion-welded corners eliminates the need for exterior caulking and produces a clean, upscale look.

Other trim and casing styles available, including PVC surrounds. Ask for details.

Extension Jambs

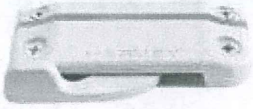
- Primed finger joint or clear pine
- 4-9/16"
- 6-9/16"
- Custom sized up to 7-1/4" wall

Interior trim and exterior casing available for new construction products only.

Hardware

Sweep Lock

For Bays and Bows with
Slimline Double Hungs



White

Cam Lock

For Rolling Windows, Bays and
Bows with Classic Double Hungs



White



Almond



Bronze



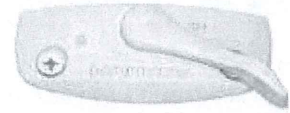
Brushed
Nickel



Oil-Rubbed
Bronze

Dual Action Lock

For Bays and Bows with
Tribute Double Hungs



White



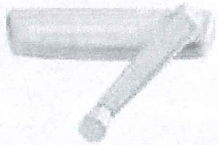
Brushed
Nickel



Oil-Rubbed
Bronze

Compact Folding Handle

For Casement and
Awning Windows



White



Almond



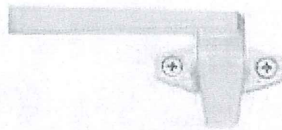
Bronze



Coppertone

Latch Handle

For Hopper Windows



White

Egress hardware and Seacoast Hardware Package also available.

Additional Options

	Casement	Rolling	Picture	Shapes/ Transoms	Awning	Hopper	Bay & Bow
Exterior Finishes	•	•	•	•	•	•	•
Exterior Casing - Vinyl	•	•	•	•	•	•	
High Performance Glazing	•	•	•		•	•	•
Acoustic (Sound Reduction)	•	•	•		•	•	•
Vigilance (Impact Resistant)	•		•		•		
Structural Mullion	•	•	•		•	•	
Simulated Double Hung Meeting Rail	•	•	•		•		•
Aluminum Screen	•	•			•	•	•
VIEWS Screen	•	•			•	•	•



HARVEY
BUILDING PRODUCTS

Thermal Performance

For the most up to date structural and thermal performance values, as well as other product specifications, visit harveybp.com.

Glazing	U factor	SHGC	VT	ENERGY STAR Compliance	
Casement	Clear Insulated	0.44	0.52	0.54	---
	ENERGY STAR	0.26	0.27	0.47	N,NC
	High Performance	0.20	0.22	0.40	All Zones

Glazing	U factor	SHGC	VT	ENERGY STAR Compliance	
Rolling	Clear Insulated	0.46	0.59	0.61	---
	ENERGY STAR	0.26	0.30	0.54	N,NC
	High Performance	0.19	0.24	0.45	All zones

Glazing	U factor	SHGC	VT	ENERGY STAR Compliance	
Awning	Clear Insulated	0.44	0.52	0.54	---
	ENERGY STAR	0.26	0.27	0.47	N,NC
	High Performance	0.20	0.22	0.40	All Zones

Glazing	U factor	SHGC	VT	ENERGY STAR Compliance	
Shapes	Clear Insulated	0.46	0.68	0.72	---
	ENERGY STAR	0.27	0.32	0.61	N,NC

Glazing	U factor	SHGC	VT	ENERGY STAR Compliance	
Picture/Transom*	Clear Insulated	0.45	0.63	0.66	---
	ENERGY STAR	0.26	0.32	0.59	N,NC
	High Performance	0.15	0.26	0.49	N,NC

*Transom not available with High Performance

ENERGY STAR: This package includes everything that is needed for a product to meet ENERGY STAR requirements. Glazing, gas, glass thickness, etc. will vary by window and usually includes Low-E coating and Argon gas. This glazing package does qualify for ENERGY STAR.

High Performance: This package is available on our premium Tribute windows as well as select accessory windows with Tribute glazing. It incorporates triple glazing and Krypton gas for maximum energy efficiency. This glazing package exceeds ENERGY STAR requirements.

U-factor measures the rate of non-solar heat transfer from one side of the window to the other. Heat transfer implies both heat loss out of a living space during cold weather and non-solar heat gain during hot summer months. The lower the U-factor, the better the performance.

Solar Heat Gain Coefficient (SHGC) measures how well a product blocks heat from the sun. The lower the SHGC, the better a product is at blocking unwanted heat gain.

Visible Transmittance (VT) measures how much light comes through a product. The higher the VT, the more light that comes through.

About Harvey Building Products

Harvey has built a solid reputation as a leading manufacturer and distributor of quality building products. A privately owned and operated business with over 50 years' experience, Harvey Building Products is known for outstanding craftsmanship and superior service as well as standing behind every product we make. In addition to manufacturing durable, attractive windows, doors and porch enclosures, Harvey distributes a full line of highly respected building products to professional contractors and builders throughout the Northeast.

We understand what it takes to be part of your home.™



Harvey Building Products
1400 Main Street
Waltham, MA 02451-1623 USA
800-9HARVEY (800-942-7839)



Information about Harvey Building Products and our products and services can be found at harveybp.com.

16-079



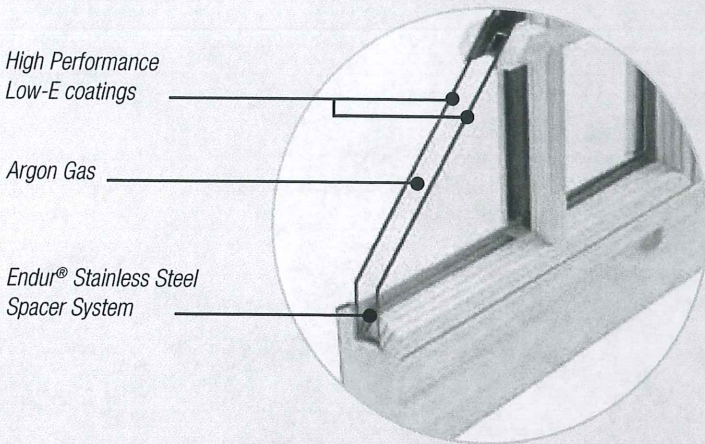
MAJESTY

Wood Windows and Patio Doors



The best components for the best performance.

In keeping with traditional wood windows, Majesty windows withstand the elements and operate smoothly for a lifetime. Made in the USA, Majesty combines its impressive energy efficient glazing with a well-built, durable aluminum clad wood frame and sash – manufactured by folks who have been making windows for more than 50 years. That level of expertise is what sets Majesty apart; the perfect combination of state-of-the-art engineering, energy-saving value, and stylish elegance.



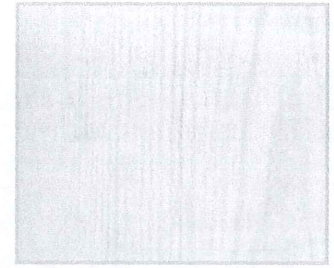
MAJESTY PREMIUM GLASS

Majesty double hung windows come standard with our Premium glass, which incorporates two panes of glass, high-performance double Low-E coatings, stainless steel spacer system, and argon gas. This glass system meets the most stringent ENERGY STAR® requirements which will significantly enhance the comfort in your home and help save you money on your home energy costs.



SOLID PONDEROSA PINE

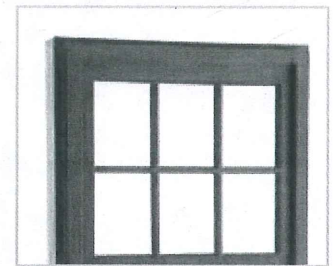
The wood components of Majesty products resist rot, degradation, splitting, warping, and mildew through a controlled treatment process that immerses Ponderosa Pine in a special preservative similar to high quality deck sealant applications.



Strong and straight grained Ponderosa pine with exceptional beauty and strength

ALUMINUM CLADDING

The extruded 0.050" wall thickness of the frame provides strength, while the 0.024" wall thickness of the sash allows the cladding to be precision molded to protect the window sash and patio door panels from exterior environmental conditions. The result is eye catching, beautiful bevels and the sought-after aesthetics of custom wood windows.

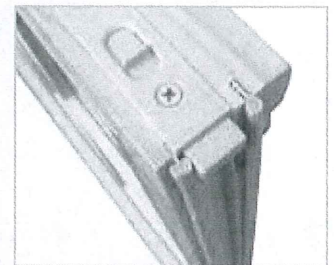


Aluminum Clad Exterior shown in Forest Green (See options page for additional colors)

An electrostatic paint process adheres paint evenly onto all surfaces, ensuring an extremely durable finish that resists fading.

WEATHERSEALS

Concerned about installing wood windows in your climate? Don't be! Majesty seals are designed to perform over a wide range of temperatures and weather conditions. A lightweight polypropylene stiffener additive, which does not absorb water or collect mold, creates an airtight seal that does not distort over time. The seal ensures a consistent barrier from external conditions and allows for smooth window and patio door operation.



Foam-Tite compression bulb seals provide maximum protection from air and water

An average of 300 inches of custom designed Foam-Tite® compression bulb seals encase the full perimeter of the sash of Majesty windows – similar to seals you see on dishwashers or refrigerators.

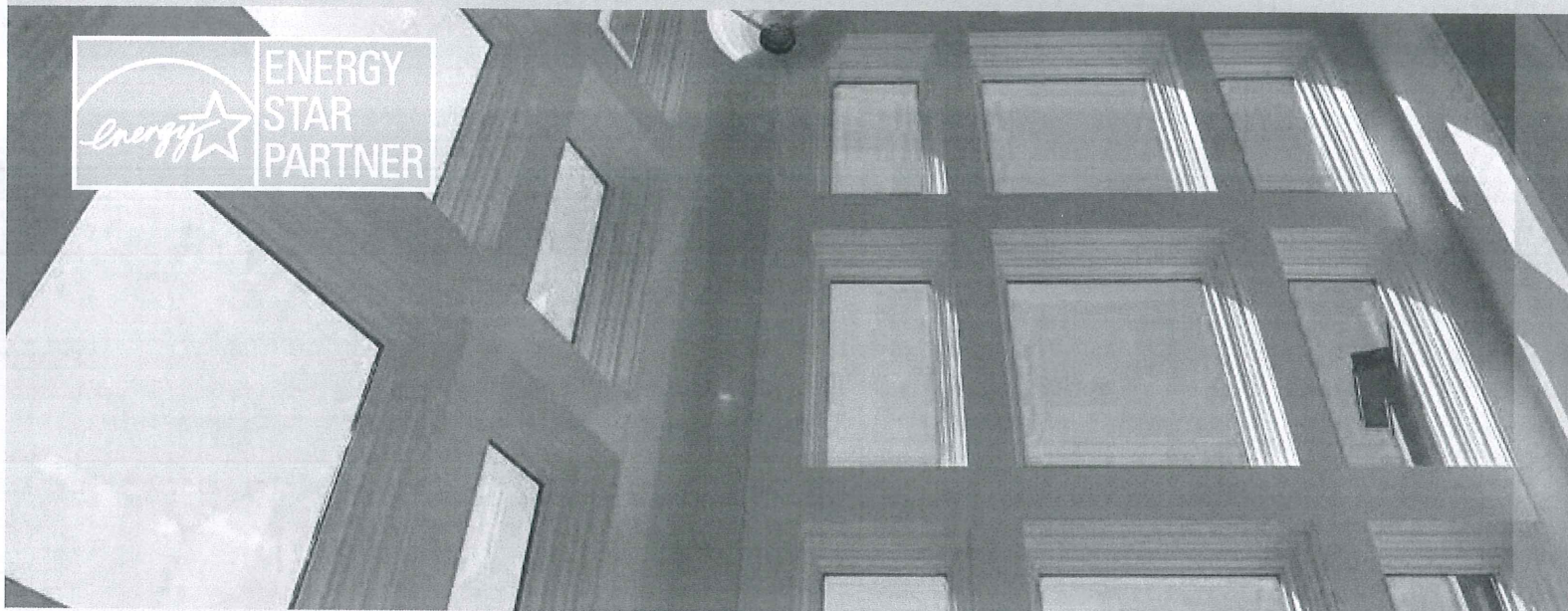
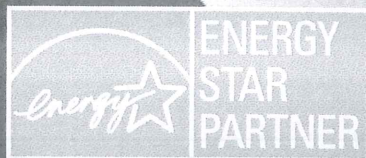


PVC Jamb Liner available in both White or Almond

PVC JAMB LINER

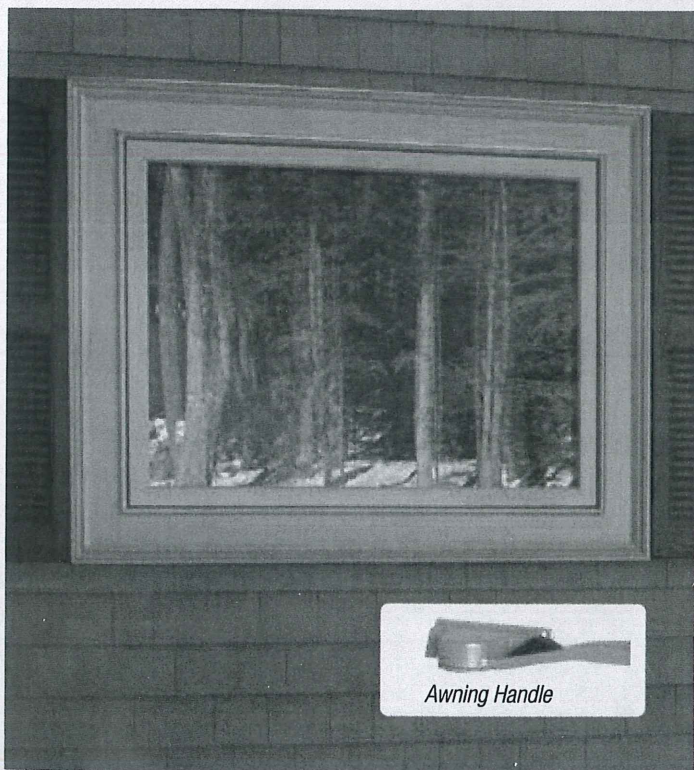
The rigid non-compression Jamb Liner adds strength, stability and reduces air infiltration, while its special beveled design allows the sash to open and tilt easily.

Products for every application



PICTURE WINDOW

Whether you're replacing an old window or installing a new one, Majesty picture wood windows can make a dramatic difference. If you are opening up a room to a spectacular view, picture windows are a great choice. When paired with Majesty awning windows, the combination optimizes visible light with ability to vent fresh air into the room.



Awning Handle

AWNING WINDOW

When you need added ventilation, Majesty awning wood windows hinge at the top and open outward, allowing fresh air into the room while deflecting rain away from your property.

HARDWARE
FEATURES

*Recessed
Sash Lock*



SASH LIFT
OPTIONS

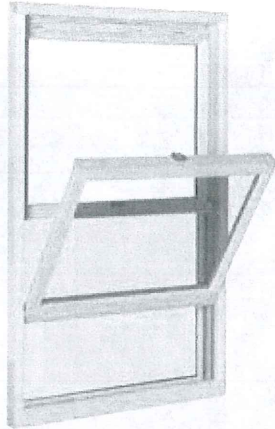
*Routed Top
Sash standard;
Bottom optional*



Hook



Loop

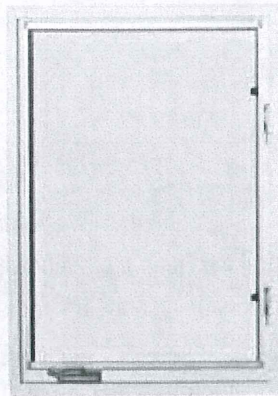


MAJESTY DOUBLE HUNG

Superb architectural details include a refined 45° glazing bead, overlapping grids, and elegant recessed hardware to provide a traditional and sleek look. Full weatherstripping around both sash prevents air infiltration and eliminates drafts. Caring for your Majesty double hung windows is a snap: both the top and bottom sash tilt in for easy cleaning.

HARDWARE
FEATURES

*Compact
Folding
Handle*

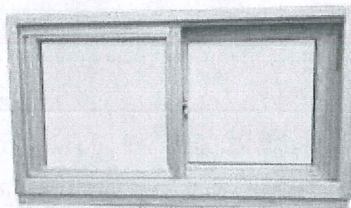


MAJESTY CASEMENT

An easy to open casement window is ideal over the kitchen sink, and casements are also favored in contemporary homes for their sleek, unobstructed expanses of glass. Full weatherstripping around the sash keeps your home comfortable, and the dual operating lock system keeps your home secure.

HARDWARE
FEATURES

*Recessed
Sash Lock*



MAJESTY GLIDING

The gliding window is an excellent choice for rooms facing walkways, porches or patios. Optimize fresh air and sunlight without compromising space or energy efficiency. Our gliding window features a recessed lock and routed operable sash to provide an enhanced view, a clean look, and a secure lock each time.

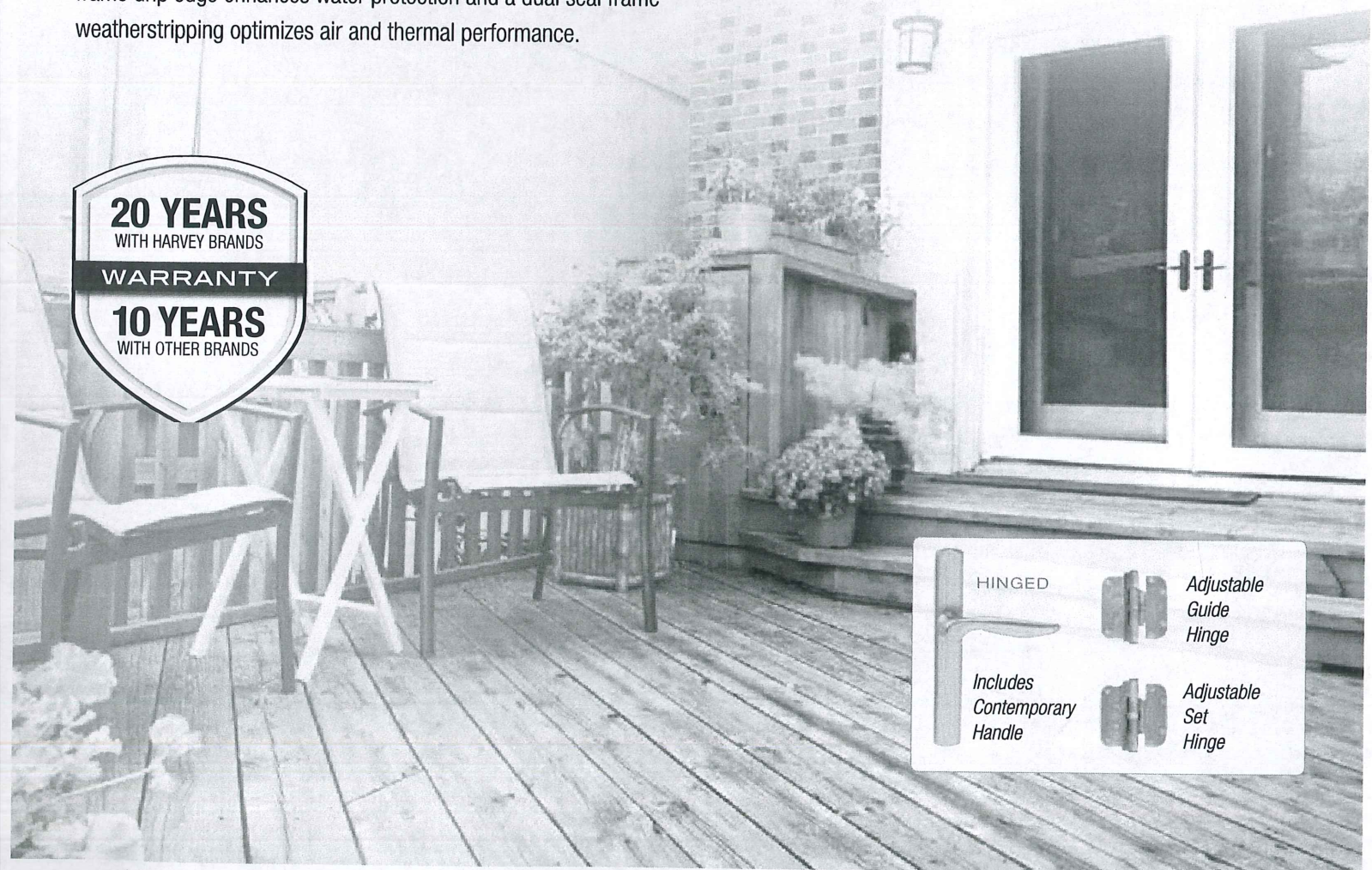
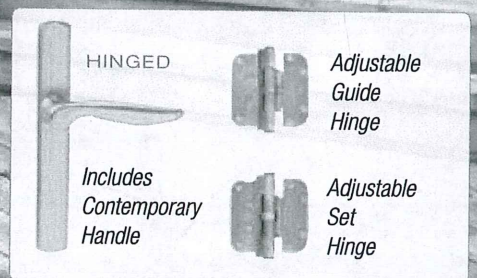


HINGED AND GLIDING PATIO DOORS

Your patio is an extension of your home, and your home is an extension of yourself and your style. Enjoy the peace of mind that comes with a low-maintenance, durable, and secure aluminum clad wood frame and bring a bit of functional charm to your outdoor space!

Majesty Gliding Patio doors offer contemporary hardware options and narrow door stiles save space while delivering a sleek, casual look. Available in 2, 3 and 4-Lite design options, the door glides effortlessly along a continuous fiberglass sill. The heavy-duty weatherstripping ensures your patio door will open without a hitch, regardless of the season.

Majesty Hinged Patio doors' classic hardware and French panel design offer accessible entryways that swing in, inviting the outdoors into your home, or swing out, extending your home to the outdoors. Hinged patio doors offer a traditional, elegant style and are available in 1, 2, 3 or 4-Lite panel design options. The integral frame drip edge enhances water protection and a dual seal frame weatherstripping optimizes air and thermal performance.



Window & Door Options

HARDWARE FINISHES

PREMIUM



STANDARD



EXTERIOR COLORS



INTERIOR WOOD OPTIONS



Warm, unfinished pine ready for you to stain or paint once installed.



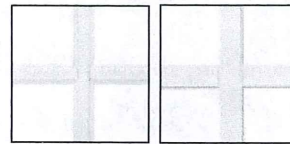
Professionally prefinished for no mess or hassle post-installation. 10 year warranty. Gliding window only available in factory primer.

Due to printing limitations, finishes and colors shown are for representation only.

GRIDS

GRIDS BETWEEN GLASS

Sealed between the panes of glass, GBG is easy to clean.

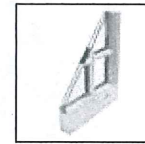


Contoured

Flat

SIMULATED DIVIDED LITES

The most authentic look of divided lites to complement traditional architecture



ADDITIONAL OPTIONS

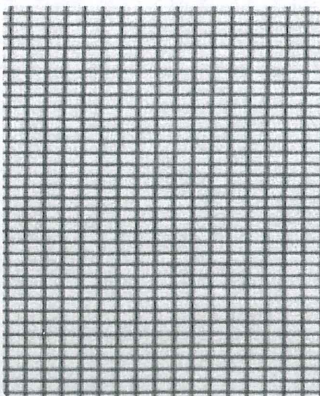
- Obscured glazing
- Tempered glazing
- Jamb line available in White or Almond

SCREEN OPTIONS

- Extruded Aluminum
- Fiberglass Wire (std.)
- Aluminum Wire
- VIEWS (premium)

INSTALLATION OPTIONS

- 4-9/16" jamb depth
- 6-9/16" factory applied ext. jamb option



Premium VIEWS (Virtually Invisible) Screens

Upgrade to GREENGUARD certified VIEWS screens to enjoy 15% greater openness providing 25% better airflow.

25% more optical clarity means you can focus on a crisper, brighter view.

THERMAL PERFORMANCE

For the most up to date structural and thermal performance values, as well as other product specifications, visit harveybp.com.

GLAZING	U-FACTOR	SHGC	VT	ENERGY STAR COMPLIANCE
Double Hung	0.27	0.26	0.49	All Zones
Picture	0.25	0.27	0.51	All Zones
Casement/Awning	0.26	0.22	0.38	All Zones

GLAZING	U-FACTOR	SHGC	VT	ENERGY STAR COMPLIANCE
Gliding Window	0.28	0.45	0.55	Northern Zones
Gliding Patio Door	0.29	0.32	0.54	North Central, Northern Zones
Hinged Patio Door	0.29	0.36	0.43	North Central, Northern Zones

U-factor measures the rate of non-solar heat transfer from one side of the window to the other. Heat transfer implies both heat loss out of a living space during cold weather and non-solar heat gain during hot summer months. The lower the U-factor, the better the performance.

Solar Heat Gain Coefficient (SHGC) measures how well a product blocks heat from the sun. The lower the SHGC, the better a product is at blocking unwanted heat gain.

Visible Transmittance (VT) measures how much light comes through a product. The higher the VT, the more light that comes through.



ENERGY STAR: This package includes everything that is needed for a product to meet ENERGY STAR requirements. Glazing, gas, glass thickness, etc. will vary by window and usually includes Low-E coating and Argon gas. This glazing package *does* qualify for ENERGY STAR.

ABOUT HARVEY BUILDING PRODUCTS

Harvey has built a solid reputation as a leading manufacturer and distributor of quality building products. A privately owned and operated business with over 50 years' experience, Harvey Building Products is known for outstanding craftsmanship and superior service as well as standing behind every product we make. In addition to manufacturing durable, attractive windows, doors and porch enclosures, Harvey distributes a full line of highly respected building products to professional contractors and builders throughout the Northeast.

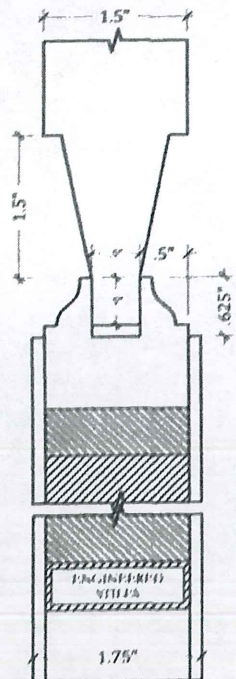
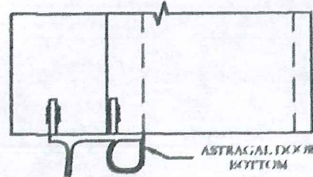
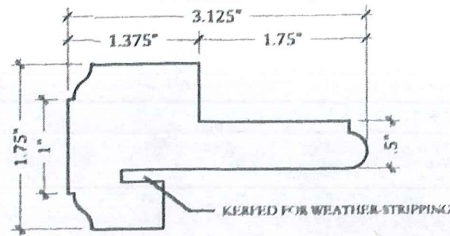
Install Confidence.®



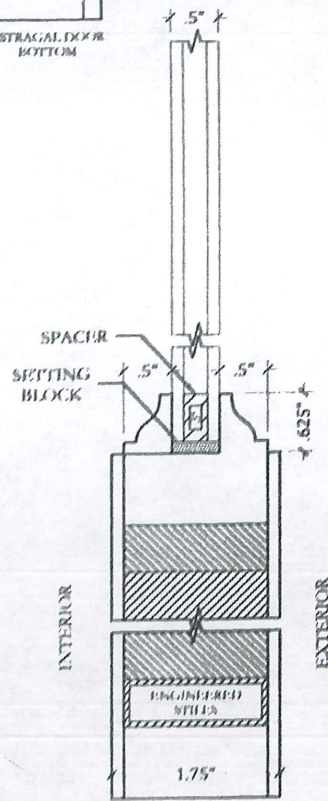
Harvey Building Products
1400 Main Street
Waltham, MA 02451-1623 USA
800-9HARVEY (800-942-7839)

Scale: HALF

DETAIL: ASTRAGAL
TYPE "A" T-ASTRAGAL

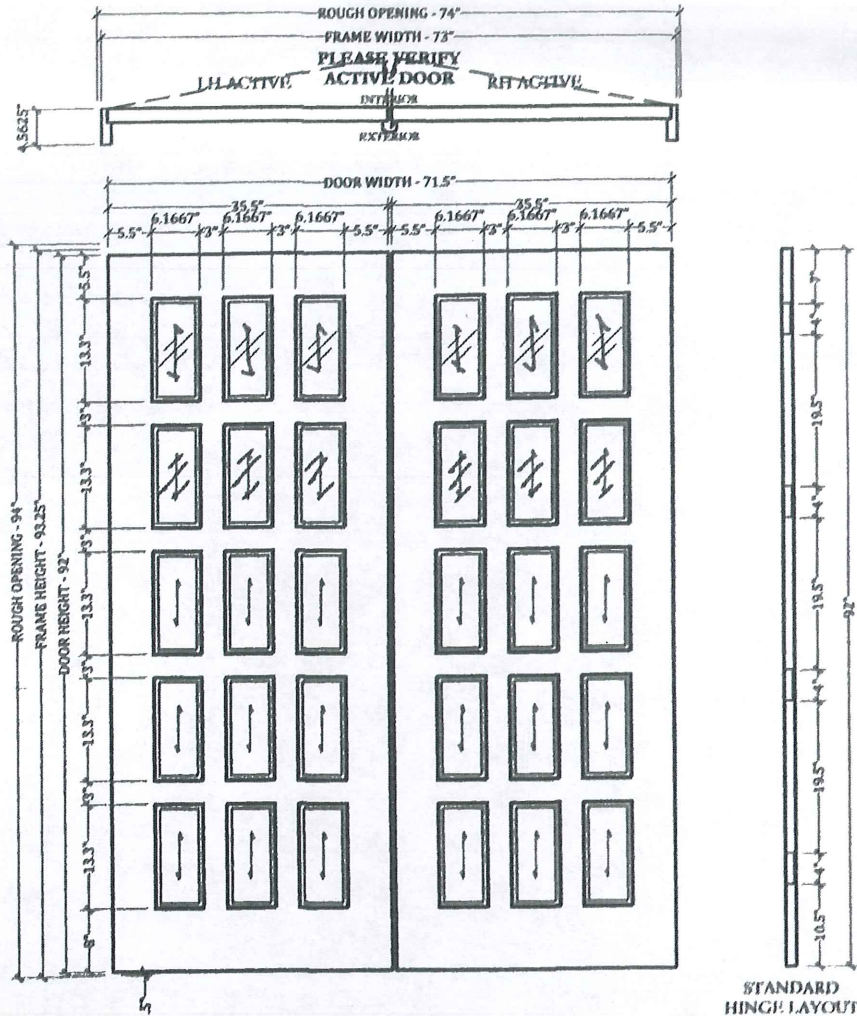


DETAIL: STILE @ PANEL
PROFILE 50.2
SOLID WOOD RAISED (PRIM) PANELS



DETAIL: STILE @ GLASS
PROFILE 50.2
5" CLEAR INSULATED SAFETY GLASS

Scale: 1/2" = 1'-0"



LINE	DOOR	QTY	NOTE
1	101		
2	102		
3	103		

NOTE: 5.5" STILES ARE REQUIRED FOR EXTERIOR DOOR WITH MORTISE TO FALL UNDER WARRANTY.
NOTE: 4.5" STILES ARE REQUIRED FOR INTERIOR DOOR WITH MORTISE TO FALL UNDER WARRANTY.
NOTE: ALL FLAT DIMENSIONS SHOWN PRIOR TO UPSTATE STANDARD PRE HANG DOWNSIZING (IF APPLICABLE).



UPSTATE DOOR
DISTINCTIVE DOOR SOLUTIONS
Uniquely Crafted

06/18/2018 10:52:05 AM, Brady B.

Customer: MacLeod And Moynihan
W&D
Job: Coyne Church
Approved: _____
Date: _____

Proposal No:
Q134375-1
Drafter: Brady B.
Date: 6/18/18
Page No: 1