

120 BROOKLINE STREET

Additional information:

- Exterior Cladding
- New Windows
- Main Entry

EXTERIOR CLADDING
Existing Conditions



Tudor Street



Dog Park

EXTERIOR CLADDING

Proposed



Dog Park

EXTERIOR CLADDING

Proposed



SHADOWS: Standing seam metal panels create shadows that break up the exterior and change as the sun moves over the course of the day

SOUND: The standing seam and the recessed window zones break up what are now flat façades facing Tudor Street and the dog park. The seams decrease the sound reflectivity of the metal panels.

PATTERN: The pattern of the varying widths of the vertical panels compresses and expands over the facade. The changing frequency and rhythmic texture of the surface of the building can be read from a distance and appreciated up close.

FINISH: The pre-patinated Graphite Zinc is a warm gray, and will undergo natural weathering over time.



Zinc Panel - Graphite Grey
Single-lock Standing Seam Panel



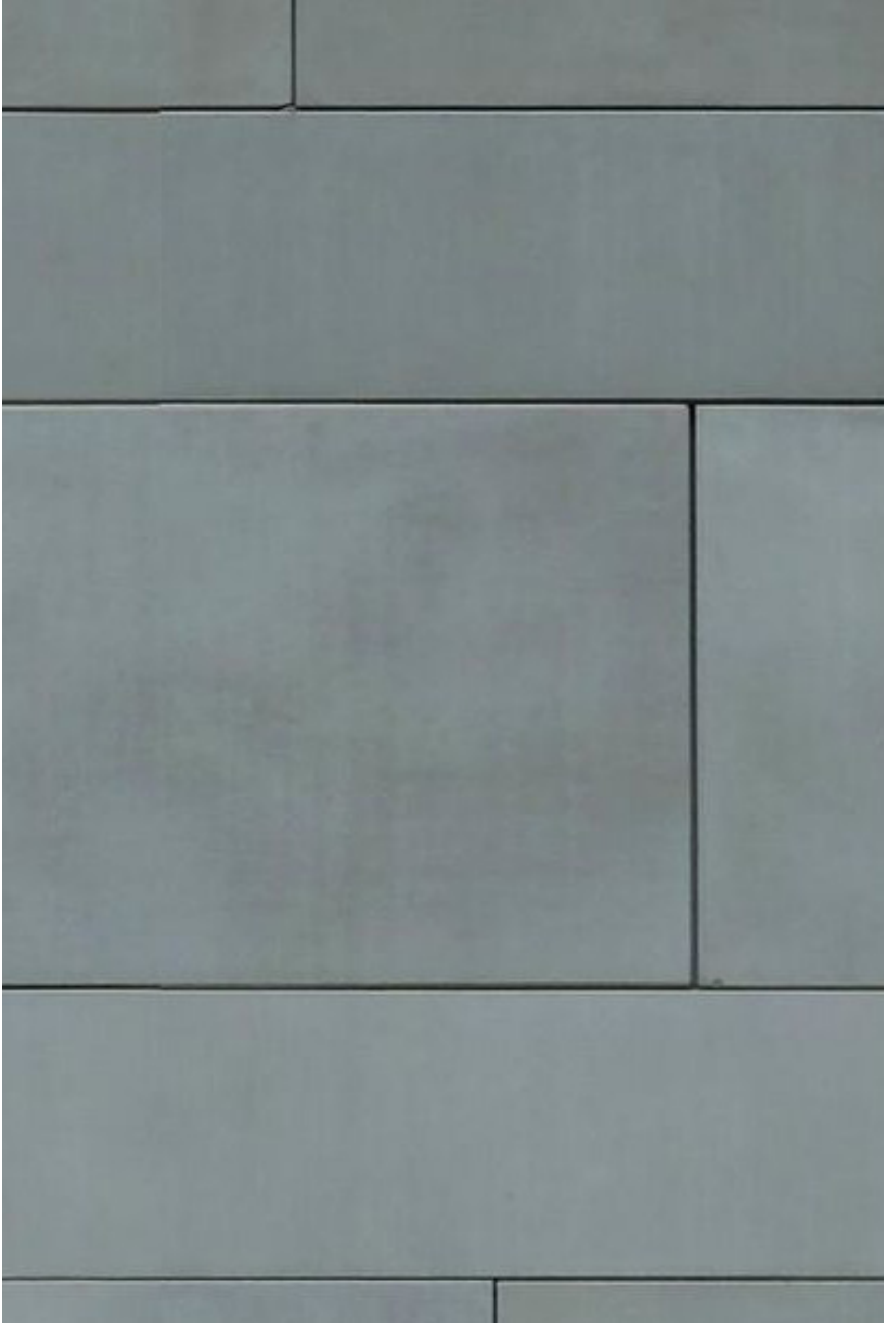
EXTERIOR CLADDING

Proposed



Around the windows, zinc panels of the same color and finish will interlock at flat seams with a 3/4" reveal. These panels will be offset from the face of the standing seam by 2 1/2".

Zinc Panel - Graphite Grey
Flat Interlocking Seam



NEW WINDOWS

Proposed



New aluminum window frames with a 2" sightline and 4.5" depth. The face of the window frame is set 4 7/8" back from the face of the adjacent metal panels. The design employs vertical mullions only, and the windows are inoperable.

The glass designed for the new windows is a 1" thick insulated glass unit consisting of two lites of 1/4" glass, filled with argon gas with a low e coating on the no. 2 surface only. There are no coatings that would cause additional glare.

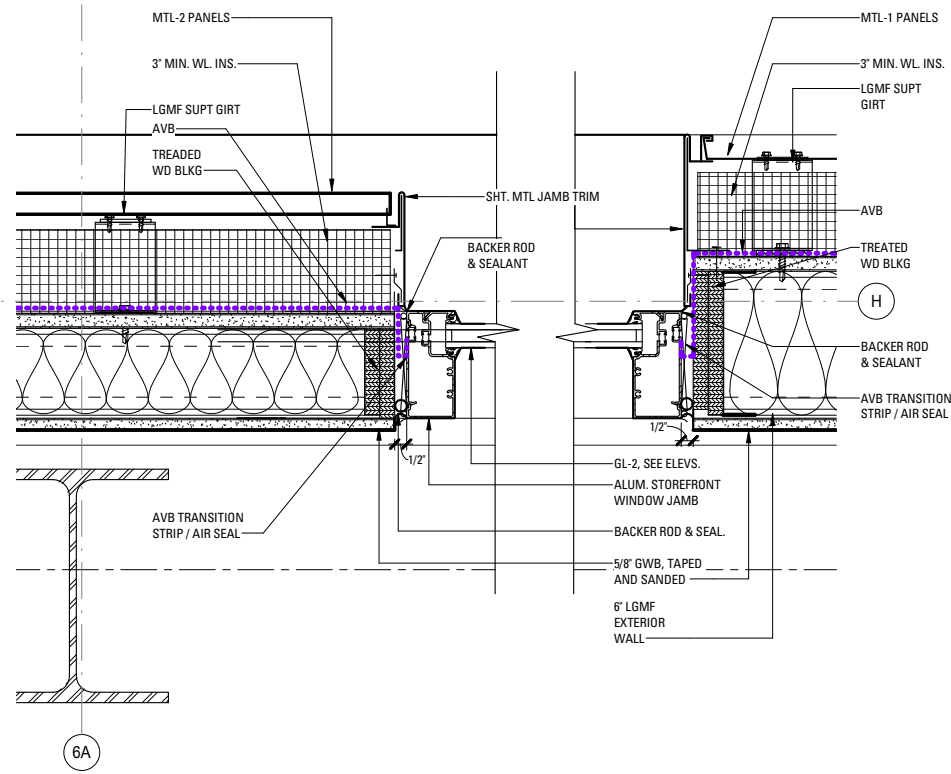
4' x 8' Aluminum Windows
Vertical Mullions, 2" Sightline

Set back 4.5" from face of adjacent panels

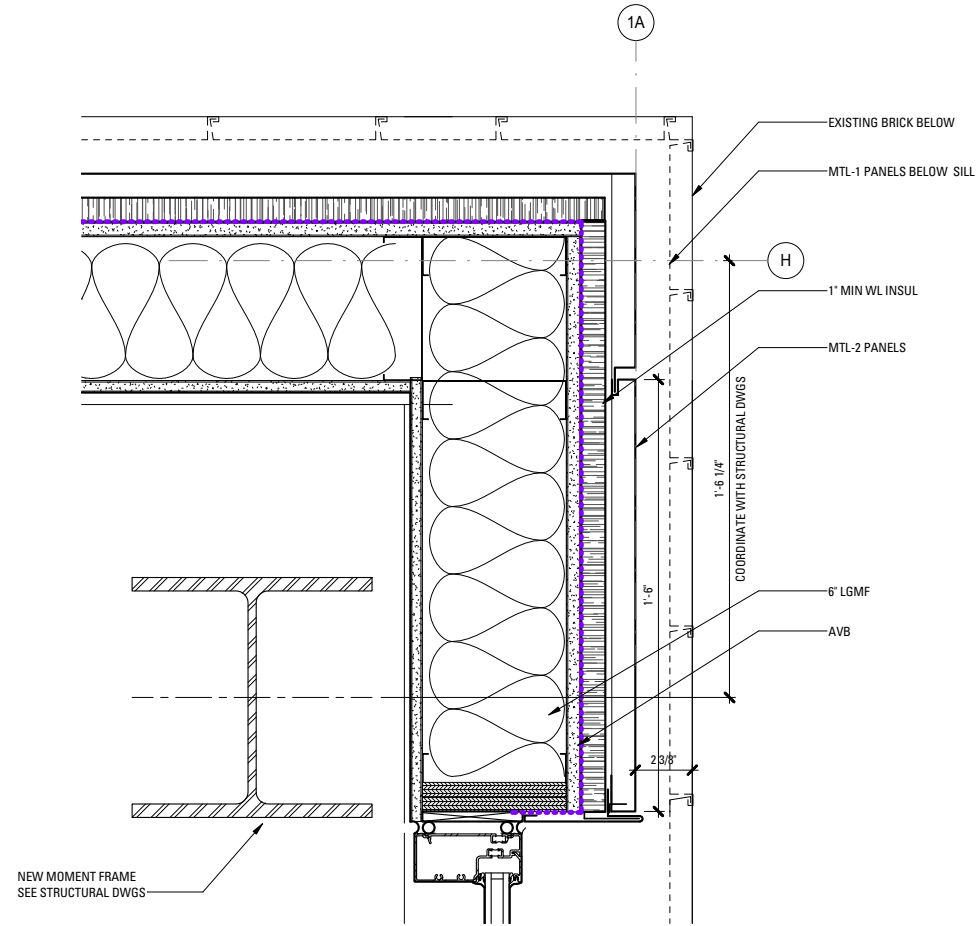


CLADDING DETAILS

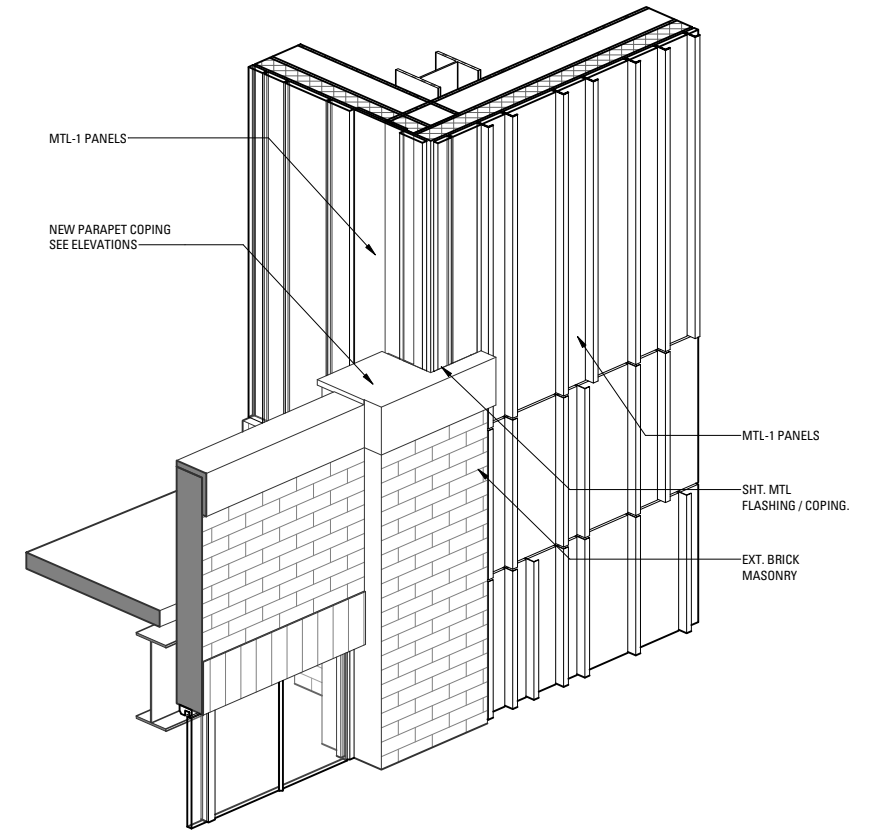
Proposed



Detail at Window Opening 1/2" = 1' 0"



Plan Detail at Southeast Corner 1/2" = 1' 0"



Detail Axonometric at Masonry Connection

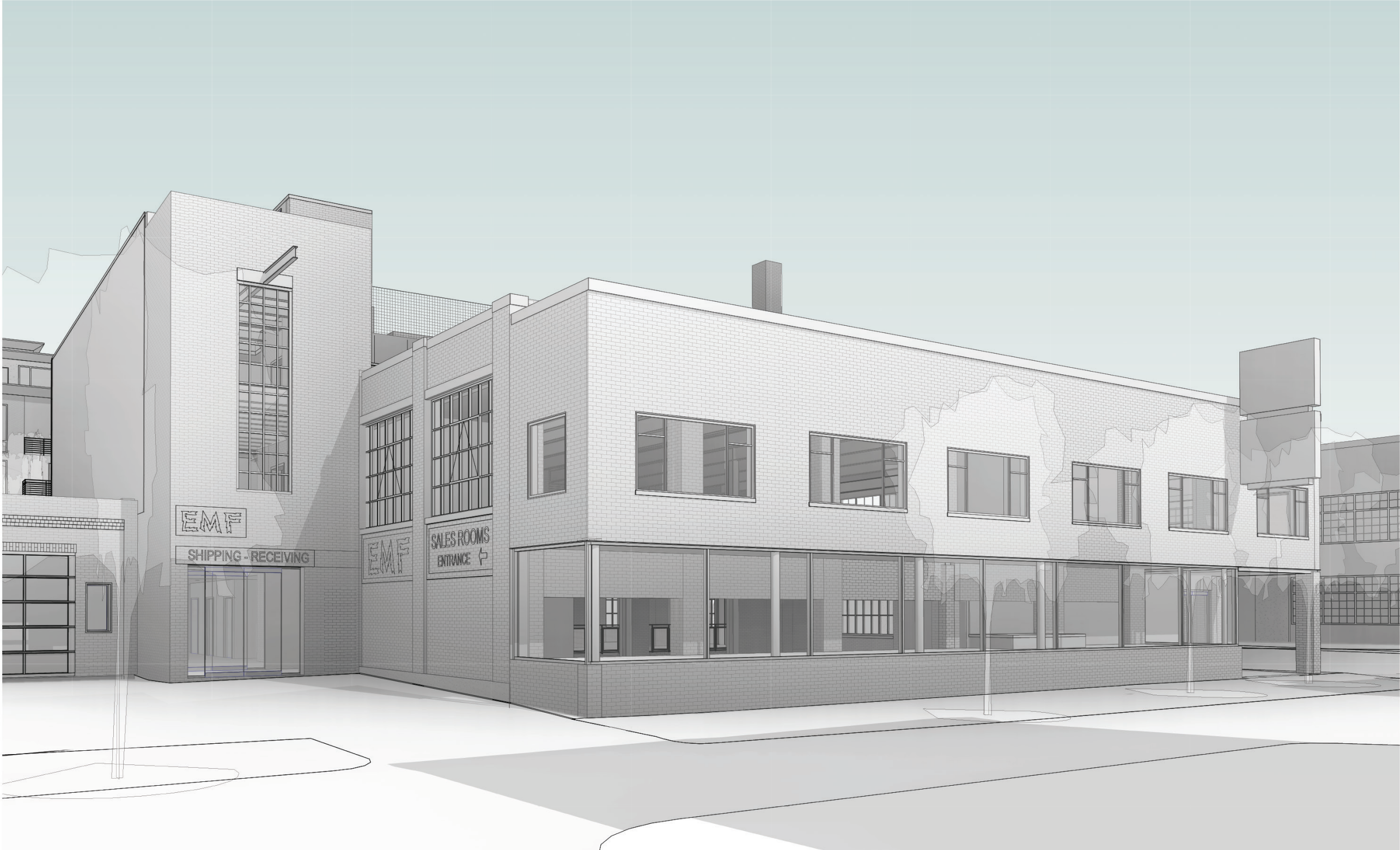
MAIN ENTRY

Existing Conditions



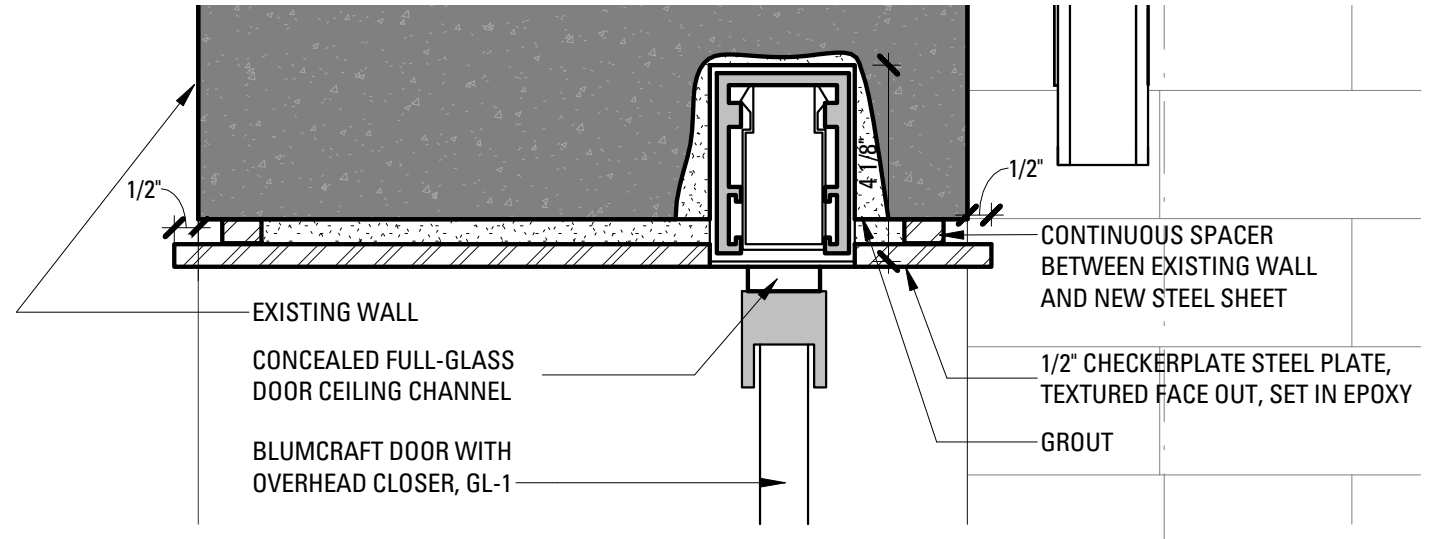
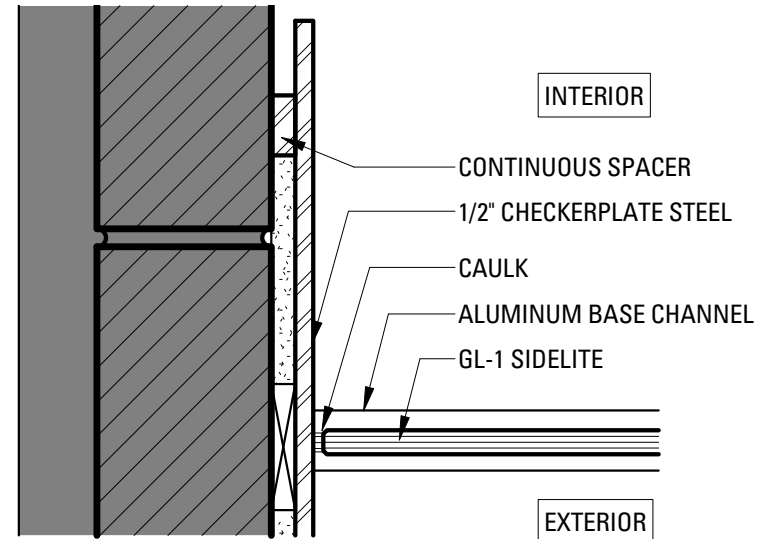
MAIN ENTRY

Proposed



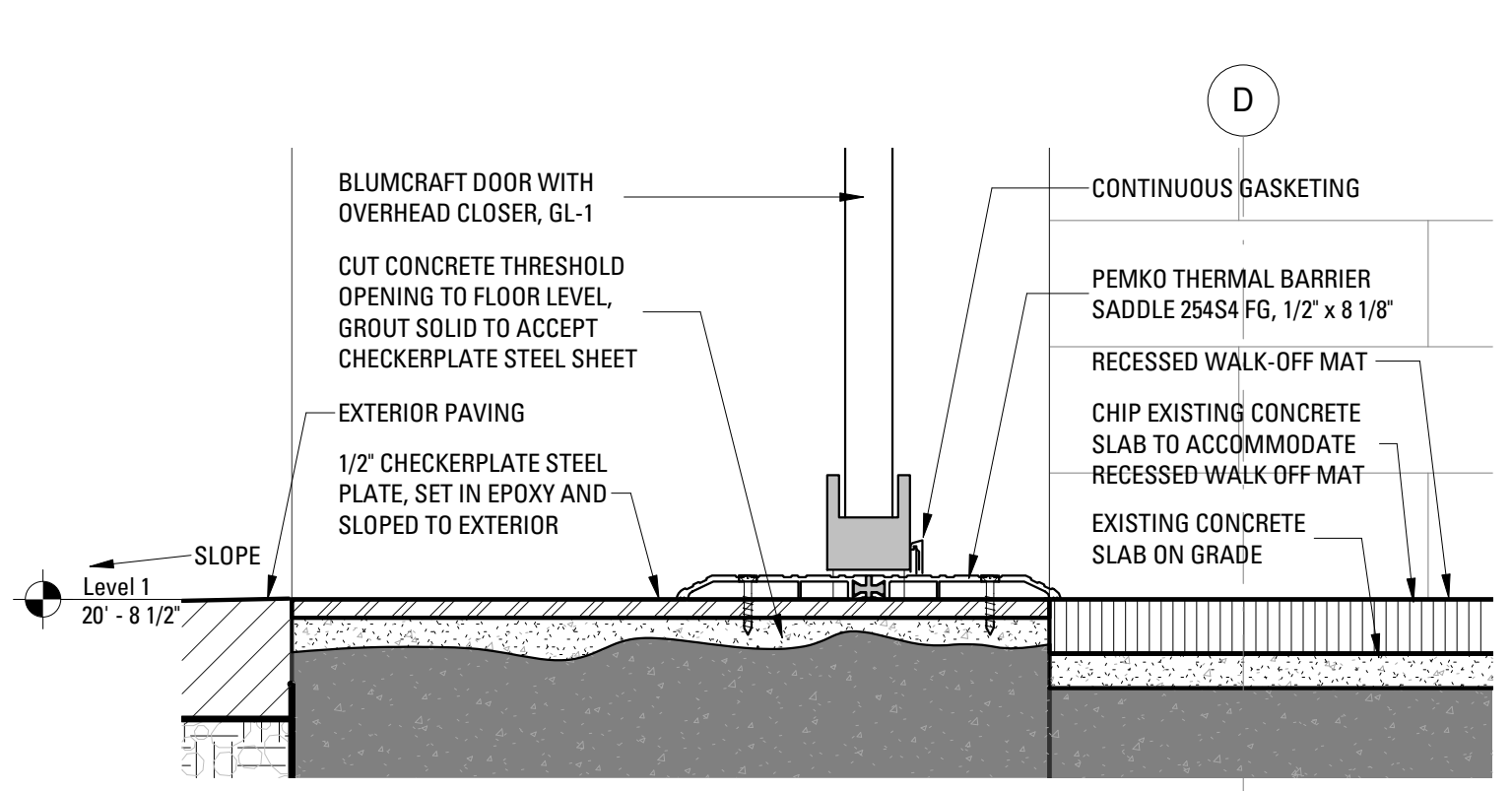
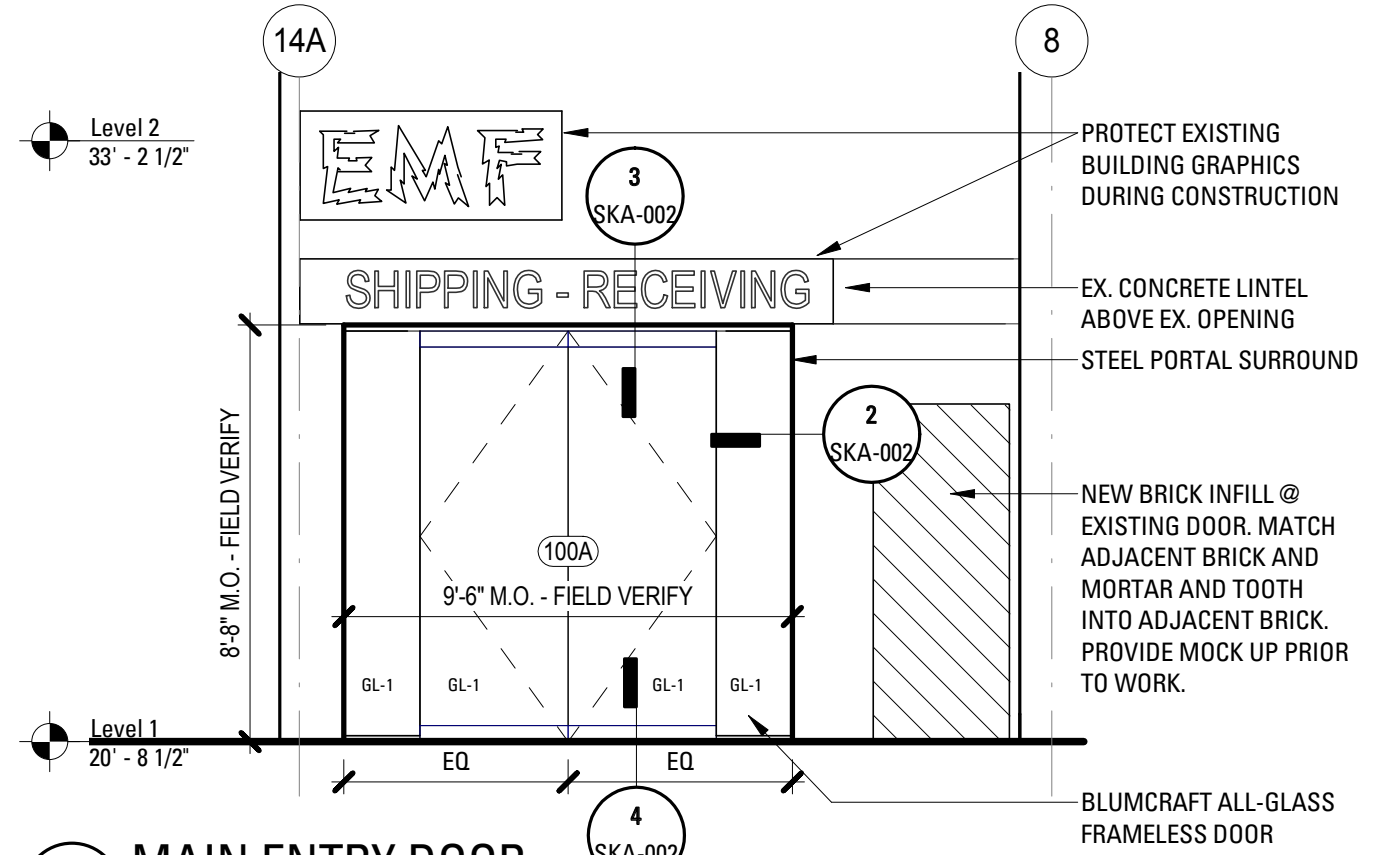
MAIN ENTRY DETAILS

Proposed



2 STOREFRONT ENTRY - FULL-GLASS ENTRY
SCALE: 3" = 1'-0"

3 MAIN ENTRY HEAD
SCALE: 3" = 1'-0"



1 MAIN ENTRY DOOR
SCALE: 1/4" = 1'-0"

4 MAIN ENTRY THRESHOLD
SCALE: 3" = 1'-0"