



CAMBRIDGE HISTORICAL COMMISSION

831 Massachusetts Avenue, 2nd Fl., Cambridge, Massachusetts 02139
Telephone: 617 349 4683 TTY: 617 349 6112
E-mail: histcomm@cambridgema.gov URL: www.cambridgema.gov/Historic

RECEIVED

AUG 19 2020

CAMBRIDGE HISTORICAL COMMISSION

APPLICATION FOR CERTIFICATE

1. The undersigned hereby applies to the Cambridge Historical Commission for a Certificate of (check one box): Appropriateness, Nonapplicability, or Hardship, in accordance with Chapter 40C of the Massachusetts General Laws and/or Chapter 2.78 of the Municipal Code.

2. Address of property: 40 Willard St, Cambridge, Massachusetts

3. Describe the proposed alteration(s), construction or demolition in the space provided below: (An additional page can be attached, if necessary).

The proposed work creates a handicap accessible walkway from the Willard St sidewalk down to the tennis courts (and in the winter, the ice). This work requires re-grading the existing slope, removing trees in doing so. A small segment of timber wall will be added (like the others on site) and a set of simple granite steps with a handrail will also facilitate movement down the slope. New planting is proposed to continue the planting that was installed further north along Willard St 2 years ago.

I certify that the information contained herein is true and accurate to the best of my knowledge and belief. The undersigned also attests that he/she has read the statements printed on the reverse.

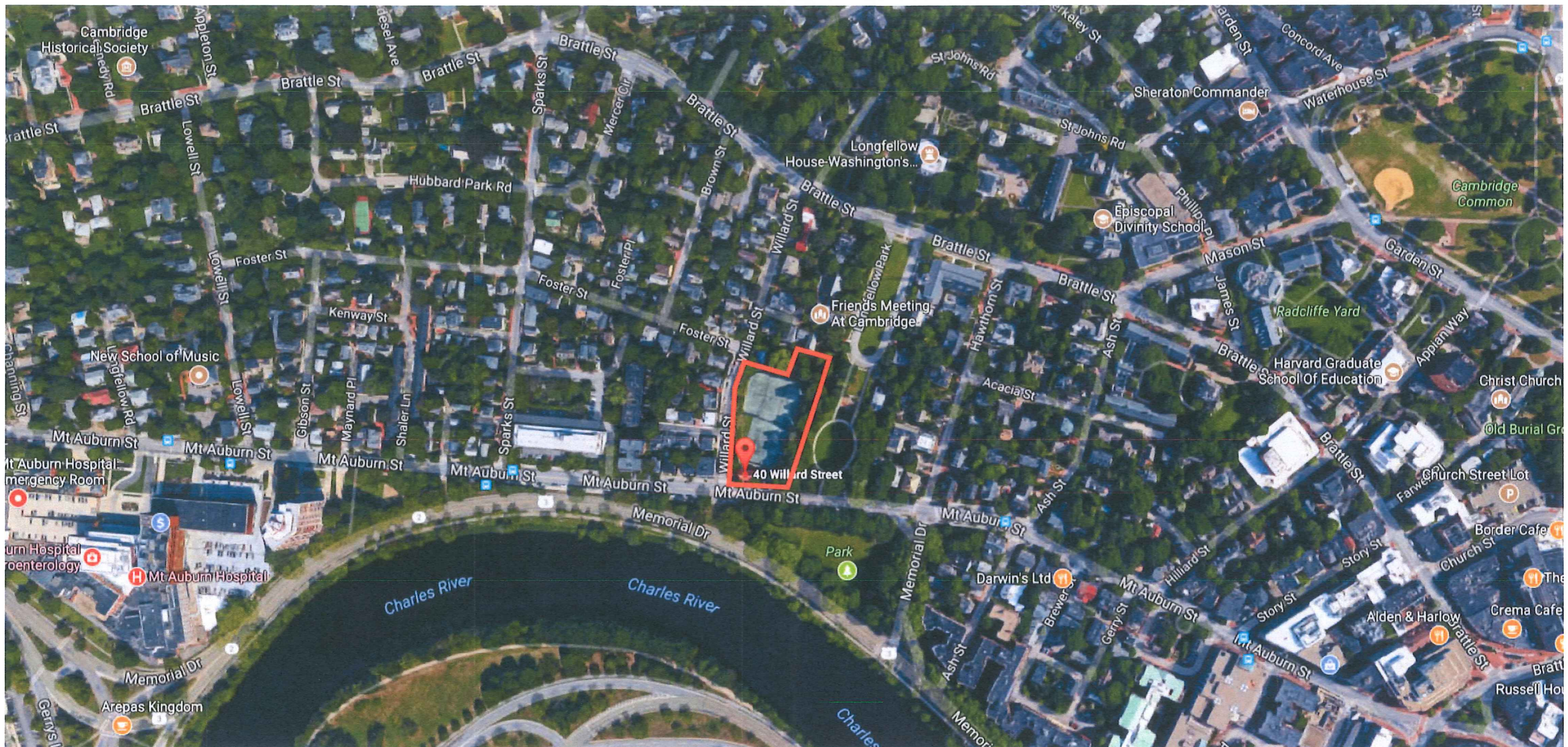
Name of Property Owner of Record: <u>Cambridge Skating Club (Andus Baker, President)</u>	
Mailing Address: <u>40 Willard St, Cambridge, MA 02138</u>	
Telephone/Fax: <u>617-354-9427</u>	E-mail: <u>cambridgeskatingclub@comcast.net</u>
Signature of Property Owner of Record: <u><i>Andus Baker</i></u> (Required field; application will not be considered complete without property owner's signature)	
Name of proponent, if not record owner: <u>G2 Collaborative, LLC (Gigi Saltonstall, Principal)</u>	
Mailing Address: <u>282 Moody Street, Suite 308, Waltham, MA 02453</u>	
Telephone/Fax: <u>781-373-5945</u>	E-mail: <u>Gigi@g2cla.com</u>

(for office use only):			
Date Application Received: <u>8/19/20</u>	Case Number: <u>4390</u>	Hearing Date: <u>9/10/20</u>	
Type of Certificate Issued: _____	Date Issued: _____		

RECEIVED

AUG 19 2020

CAMBRIDGE HISTORICAL COMMISSION



W:\G2 COLLABORATIVE\ACTIVE PROJECTS\CAMBRIDGE SKATING CLUB_1701\CAD\1701 CSC PLOT\PLT_EX_COND_PHOTOS_PH1B.DWG

G2 COLLABORATIVE
LANDSCAPE ARCHITECTURE

282 Moody St, Suite 308
Waltham, MA 02453
781.373.5945 - www.g2ca.com

G2CLA PROJ. #: 1701/1814
DRAWN BY: GS
DWG REF:
SCALE:
DATE: 8/14/2020

PROJECT:
CAMBRIDGE SKATING CLUB
40 WILLARD ST.
SHEET TITLE:
PROJECT LOCUS

GENERAL NOTES:
DO NOT SCALE OFF OF DRAWING. VERIFY ALL DIMENSIONS IN FIELD PRIOR TO CONSTRUCTION.
REPORT ANY DISCREPANCIES OR CONFLICTS TO LANDSCAPE ARCHITECT IMMEDIATELY.

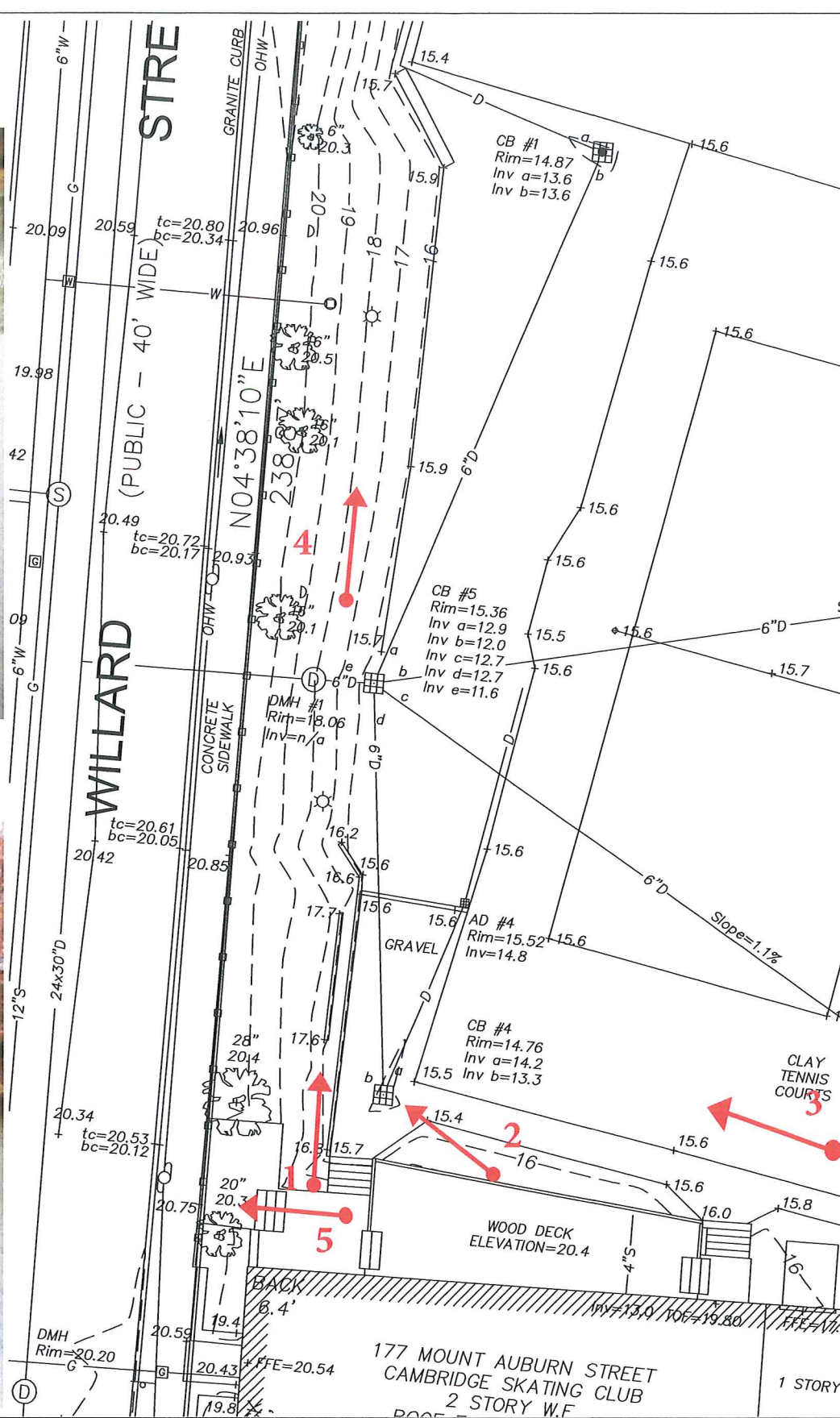


L-0

8/12/2020

© COPYRIGHT 2020 G2 COLLABORATIVE

W:\G2 COLLABORATIVE\ACTIVE PROJECTS\CAMBRIDGE_SKATING CLUB_1701\CAD\1701 CSC.PLOT\PL1_PH1B.DWG



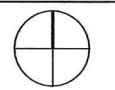
G2 COLLABORATIVE
LANDSCAPE ARCHITECTURE

282 Moody St, Suite 308
Waltham, MA 02453
781.373.5945 - www.G2cla.com

G2CLA PROJ. #: 1701/1814
DRAWN BY: GS
DWG REF:
SCALE: NTS
DATE: 8/14/2020

PROJECT: CAMBRIDGE SKATING CLUB
40 WILLARD ST.
SHEET TITLE: EXISTING CONDITIONS

GENERAL NOTES:
DO NOT SCALE OFF OF DRAWING. VERIFY ALL DIMENSIONS IN FIELD PRIOR TO CONSTRUCTION.
REPORT ANY DISCREPANCIES OR CONFLICTS TO LANDSCAPE ARCHITECT IMMEDIATELY.

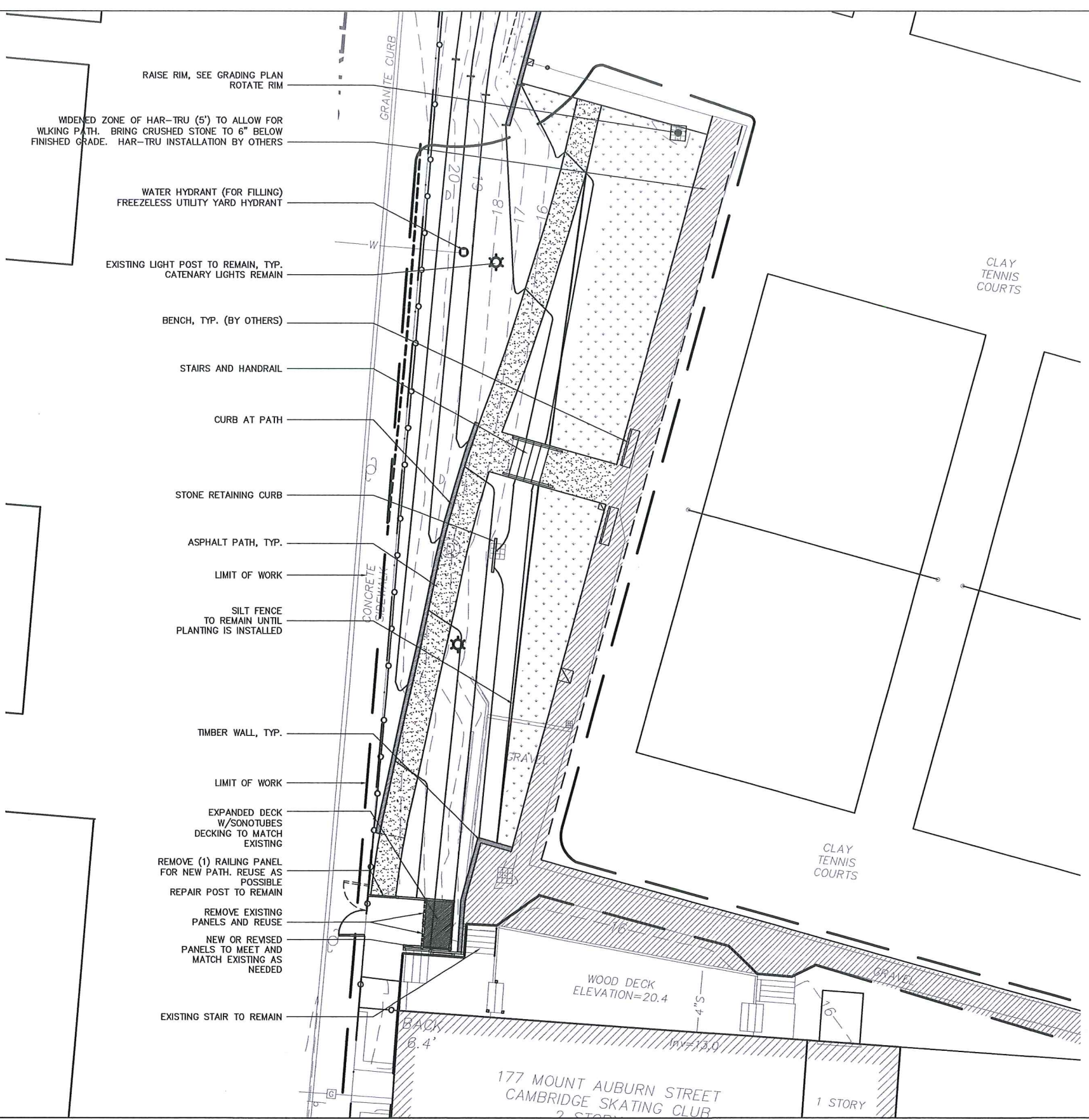


L-1

8/11/2020

© COPYRIGHT 2020 G2 COLLABORATIVE

W:\G2 COLLABORATIVE\ACTIVE PROJECTS\CAMBRIDGE SKATING CLUB_1701\CAD\1701 CSC PLOT\PLT_LOCUS_PH1B.DWG



G2 COLLABORATIVE LANDSCAPE ARCHITECTURE 282 Moody St, Suite 308 Waltham, MA 02453 781.373.5945 - www.G2cla.com	G2CLA PROJ. #: 1701/1814	PROJECT: CAMBRIDGE SKATING CLUB 40 WILLARD ST. SHEET TITLE: SITE PLAN- PHASE 1B
	DRAWN BY: GS	
	SCALE: 1"=20'-0"	
	DATE: 8/14/2020	

GENERAL NOTES:
 DO NOT SCALE OFF OF DRAWING. VERIFY ALL DIMENSIONS IN FIELD PRIOR TO CONSTRUCTION.
 REPORT ANY DISCREPANCIES OR CONFLICTS TO LANDSCAPE ARCHITECT IMMEDIATELY.



W:\G2 COLLABORATIVE\ACTIVE PROJECTS\CAMBRIDGE SKATING CLUB_1701\CAD\1701_CSC PLOT PLANTING PLAN.DWG

8/11/2020

G2 COLLABORATIVE
LANDSCAPE ARCHITECTURE
282 Moody St, Suite 308
Waltham, MA 02453
781.373.5945 - www.g2cla.com

G2CLA PROJ. #: 1701/1814
DRAWN BY: GS
DWG REF:
SCALE: 1"=20'-0"
DATE: 8/14/2020

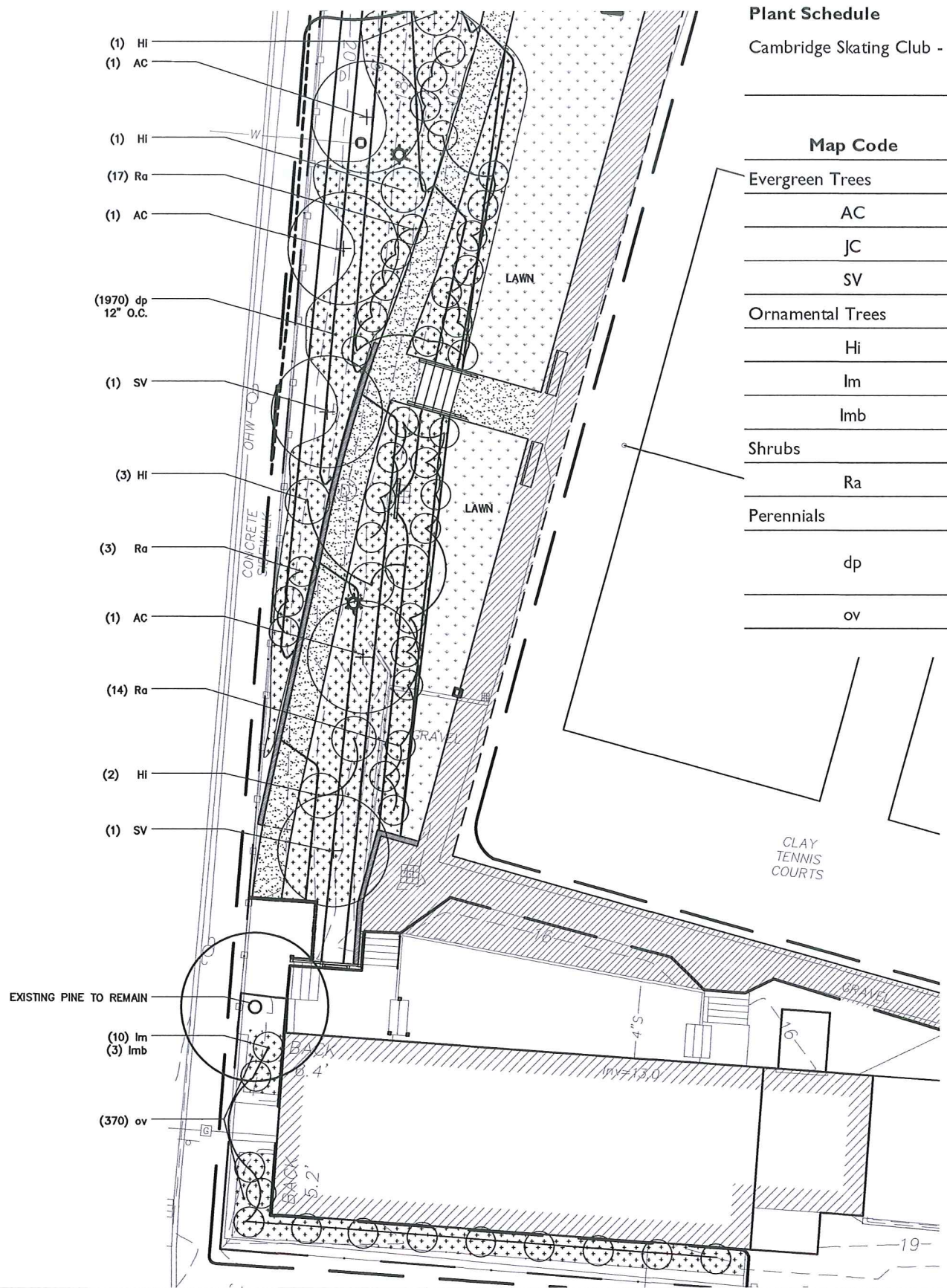
PROJECT: CAMBRIDGE SKATING CLUB
40 WILLARD ST.
SHEET TITLE: PLANTING PLAN

GENERAL NOTES:
DO NOT SCALE OFF OF DRAWING. VERIFY ALL DIMENSIONS IN FIELD PRIOR TO CONSTRUCTION.
REPORT ANY DISCREPANCIES OR CONFLICTS TO LANDSCAPE ARCHITECT IMMEDIATELY.

Plant Schedule

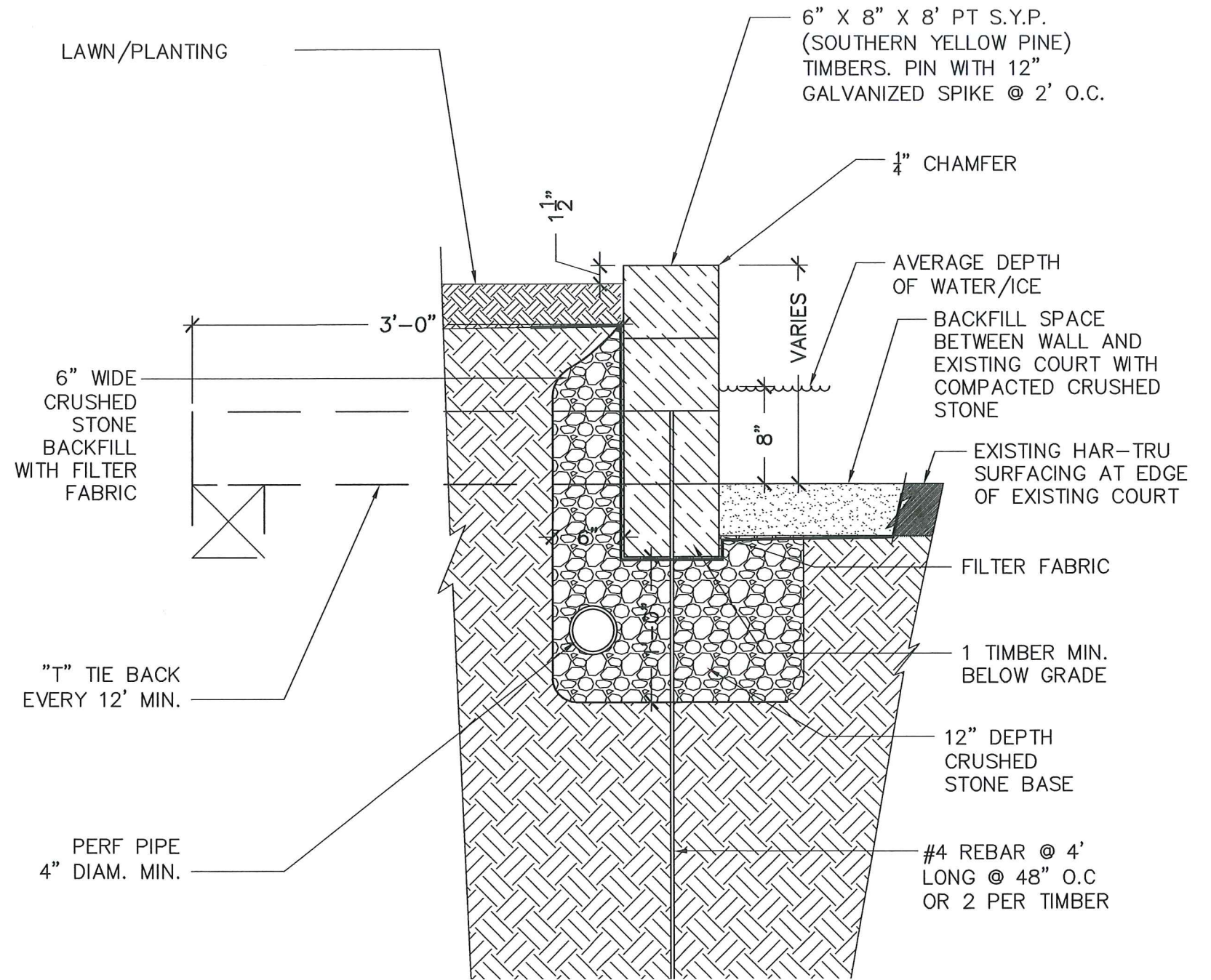
Cambridge Skating Club - Phase IB

Map Code	Qty.	Size	Botanical Name	Common Name	Eventual Size	Spacing	Comments
Evergreen Trees							
AC	3	8-10' B+B	Abies concolor 'Candicans'	Candicans White Fir	30' high x 10' wide		
JC	2	8-10' B+B	Juniperus chinensis 'Hetzii Columnaris'	Hetzii Columnar Chinese Juniper	12-15' high x 6-8' wide		
SV	2	10-12' B+B	Sciadopitys verticillata	Umbrella Pine	20-40' high x 15-20' wide		
Ornamental Trees							
Hi	7	15 GAL	Hamamelis x intermedia 'Jelena'	Jelena Witch Hazel	15-20' high x 10-15' wide		
Im	10	2.5-3' B+B	Ilex x meservaeae 'Blue Princess'	Blue Princess Holly	10-15' high x 8-10' wide		
Imb	3	2.5-3' B+B	Ilex x meservaeae 'Blue Prince'	Blue Prince Holly	10-15' high x 8-10' wide		
Shrubs							
Ra	34	5 GAL	Rhus aromatica 'Gro-Low'	Fragrant Sumac	18-24" high x 6-8' wide		
Perennials							
dp	1970	Bare Root	Dennstaedtia punctilobula	Hay-scented Fern	18" high x 24-30" wide	12" OC	Tennessee Wholesale Nursery
ov		4" pot	Omphalodes verna	Blue-eyed Mary	8" high x 1' wide	12" OC	



L-3

W:\G2 COLLABORATIVE\ACTIVE PROJECTS\CAMBRIDGE SKATING CLUB_1701\CAD\1701 CSC PLOT\PLT_WALL_DET_PH1B.DWG



G2 COLLABORATIVE
LANDSCAPE ARCHITECTURE

282 Moody St, Suite 308
Waltham, MA 02453
781.373.5945 - www.G2cla.com

G2CLA PROJ. #: 1701/1814

DRAWN BY: GS

DWG REF:

SCALE: AS NOTED

DATE: 8/14/2020

PROJECT: CAMBRIDGE SKATING CLUB
40 WILLARD ST.

SHEET TITLE: **TIMBER WALL**

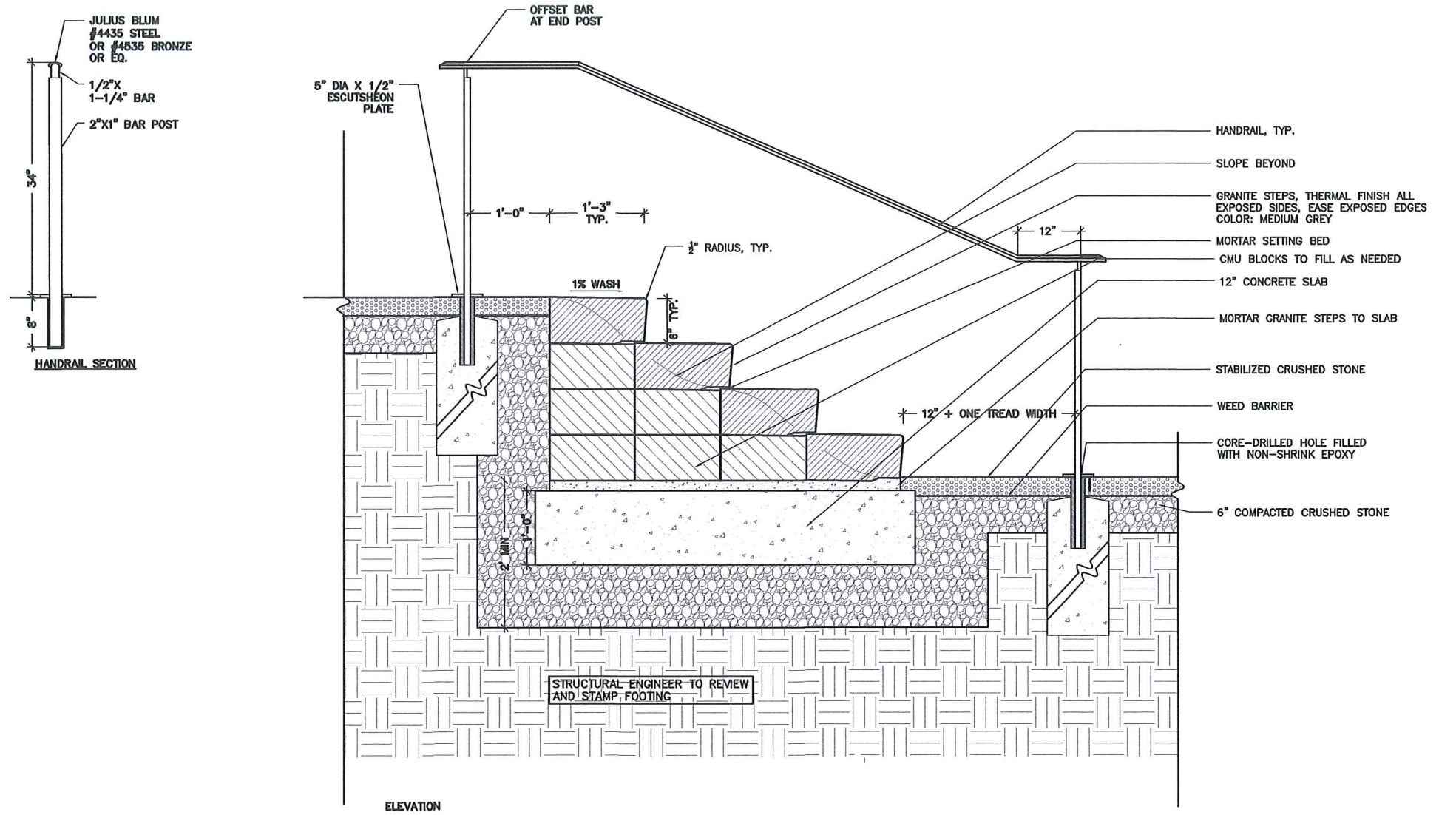
GENERAL NOTES:
DO NOT SCALE OFF OF DRAWING. VERIFY ALL DIMENSIONS IN FIELD PRIOR TO CONSTRUCTION.
REPORT ANY DISCREPANCIES OR CONFLICTS TO LANDSCAPE ARCHITECT IMMEDIATELY.



GRANITE STEPS



HANDRAIL



1 GRANITE STEP WITH HANDRAIL

SCALE: 1/2" = 1'-0"

SECTION/DETAIL

W:\G2 COLLABORATIVE PROJECTS\CAMBRIDGE SKATING CLUB_1701\CAD\1701 CSC PLOT\PLT_STAIR_DET_PH1B.DWG

G2 COLLABORATIVE
LANDSCAPE ARCHITECTURE
282 Moody St, Suite 308
Waltham, MA 02453
781.373.5945 - www.G2cla.com

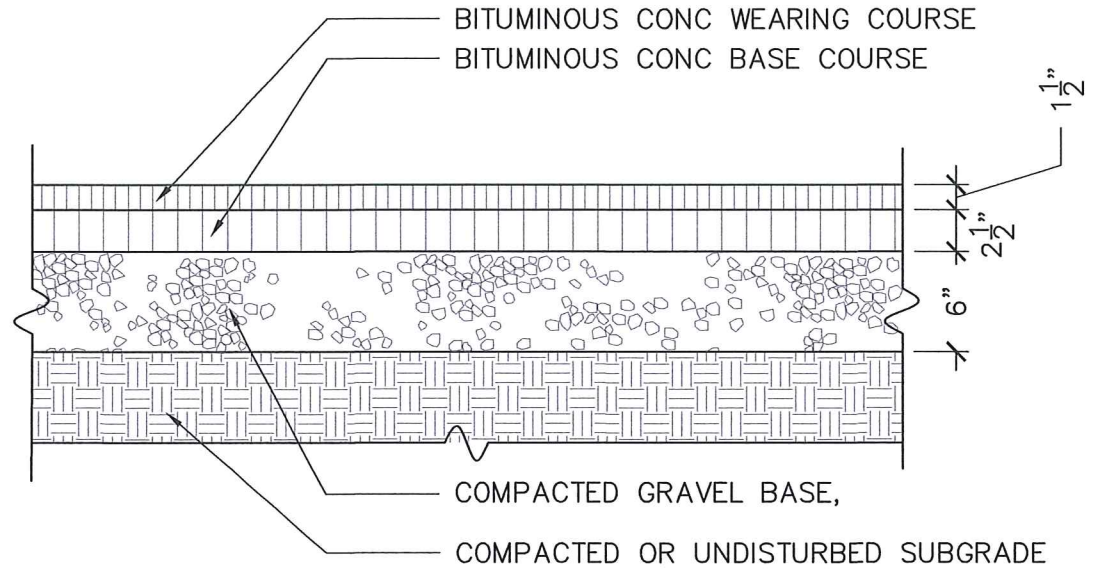
G2CLA PROJ. #: 1701/1814
DRAWN BY: GS
DWG REF:
SCALE: AS NOTED
DATE: 8/14/2020

PROJECT: CAMBRIDGE SKATING CLUB
40 WILLARD ST.

SHEET TITLE: GRANITE STAIR DETAIL

GENERAL NOTES:
DO NOT SCALE OFF OF DRAWING. VERIFY ALL DIMENSIONS IN FIELD PRIOR TO CONSTRUCTION.
REPORT ANY DISCREPANCIES OR CONFLICTS TO LANDSCAPE ARCHITECT IMMEDIATELY.

W:\G2 COLLABORATIVE\ACTIVE PROJECTS\CAMBRIDGE SKATING CLUB_1701\CAD\1701 CSC PLOT\PLT_CRSH STONE PATH_DET_PH1B.DWG



1 ASPHALT PAVING
 SCALE: 1" = 1'-0"

G2 COLLABORATIVE
 LANDSCAPE ARCHITECTURE
 282 Moody St, Suite 308
 Waltham, MA 02453
 781.373.5945 - www.G2cla.com

G2CLA PROJ. #: 1701/1814
 DRAWN BY: GS
 DWG REF:
 SCALE: AS NOTED
 DATE: 8/14/2020

PROJECT: CAMBRIDGE SKATING CLUB
 40 WILLARD ST.
 SHEET TITLE: ASPHALT PATH

GENERAL NOTES:
 DO NOT SCALE OFF OF DRAWING. VERIFY ALL DIMENSIONS IN FIELD PRIOR TO CONSTRUCTION.
 REPORT ANY DISCREPANCIES OR CONFLICTS TO LANDSCAPE ARCHITECT IMMEDIATELY.

8/14/2020

© COPYRIGHT 2020 G2 COLLABORATIVE