



**1200 MASSACHUSETTS AVE
CAMBRIDGE, MA**

**WINDOW/ HVAC PROJECT
PROPOSED FACADE RENOVATIONS
FALL 2020**



MASSACHUSETTS AVE



**1200 MASSACHUSETTS AVE
CAMBRIDGE, MA**

**WINDOW/ HVAC PROJECT
PROPOSED FACADE RENOVATIONS
FALL 2020**



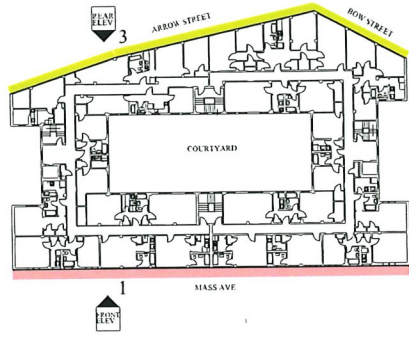
BOW & ARROW STREETS



Front Elevation- Mass Ave



Rear Elevation- Bow & Arrow St



- 5th Floor
37'-4"
- 4th Floor
28'-0"
- 3rd Floor
18'-8"
- 2nd Floor
9'-4"
- 1st Floor
0'-0"
- Basement

① Existing Front Elevation- Mass Ave
1/8" = 1'-0"



- 5th Floor
37'-4"
- 4th Floor
28'-0"
- 3rd Floor
18'-8"
- 2nd Floor
9'-4"
- 1st Floor
0'-0"
- Basement

② Existing Rear Elevation- Bow & Arrow St
1/8" = 1'-0"

This drawing illustrates or otherwise contains information proprietary to HAMILTON CONSTRUCTION MANAGEMENT CORP. Any disclosure or use of this information is expressly prohibited without written agreement.

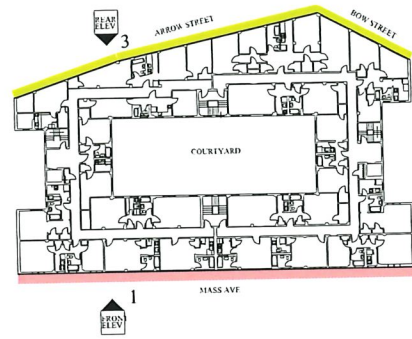
HAMILTON
CONSTRUCTION MANAGEMENT

39 BRIGHTON AVE, BOSTON, MA 02134
www.hcmcorp.com tel: 617-783-0039 fax: 617-783-0568

Longfellow Apartments
Building Renovations
1200 Massachusetts Ave
Cambridge, MA
Existing- Front & Rear Elevations

October 29, 2020

A2.0

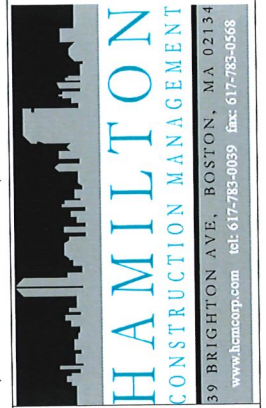


① Front Elevation- View 1 Mass Ave
1/8" = 1'-0"



② Rear Elevation- View 3 Bow & Arrow St
1/8" = 1'-0"

This drawing illustrates or otherwise contains information proprietary to HAMILTON CONSTRUCTION MANAGEMENT CORP. Any disclosure or use of this information is expressly prohibited without written agreement.



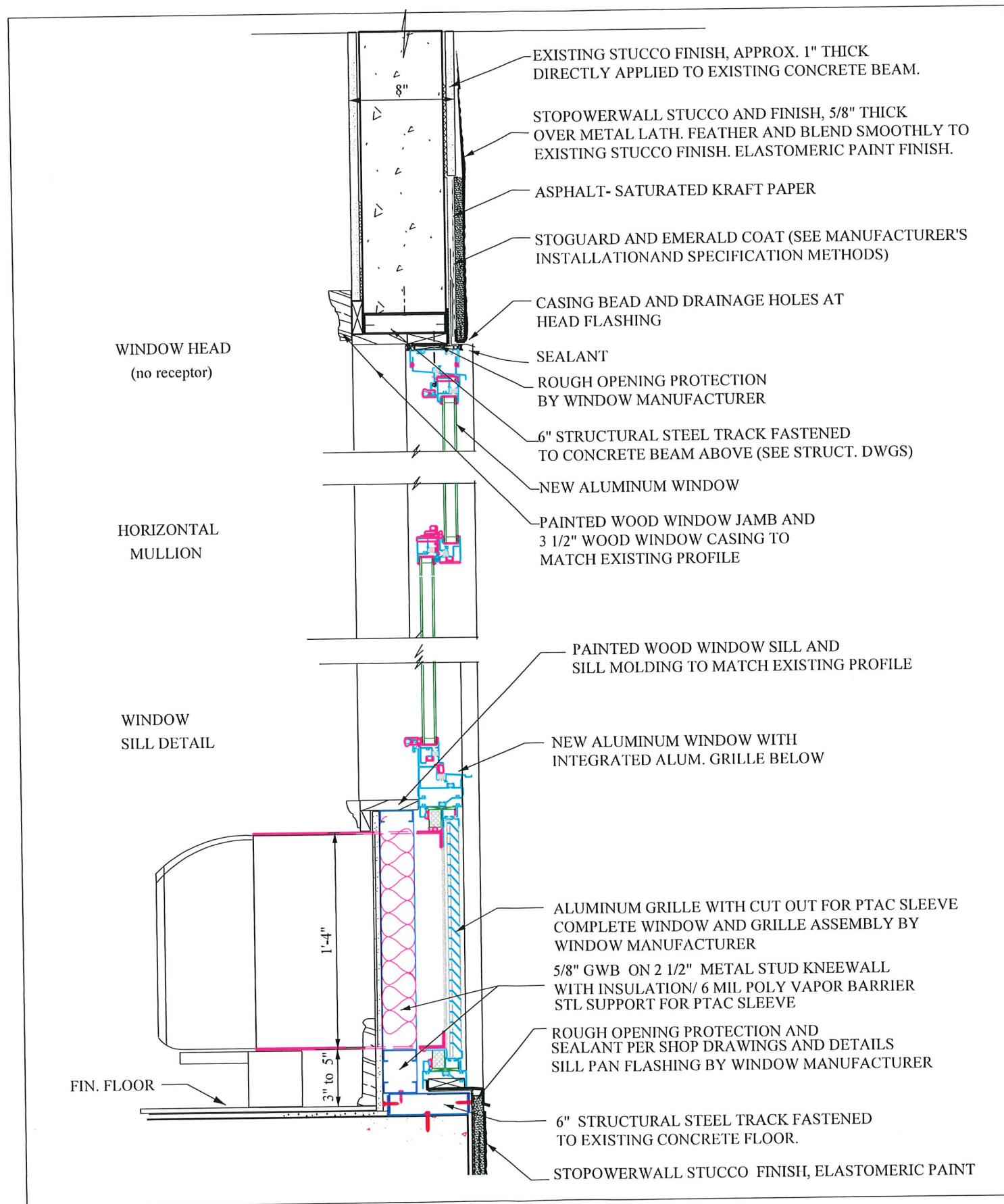
- 5th Floor 37'-4"
- 4th Floor 28'-0"
- 3rd Floor 18'-8"
- 2nd Floor 9'-4"
- 1st Floor 0'-0"
- Basement

Longfellow Apartments
Building Renovations
1200 Massachusetts Ave
Cambridge, MA
Renovated Front & Rear Elevations

October 19, 2020
Permit

A2.4

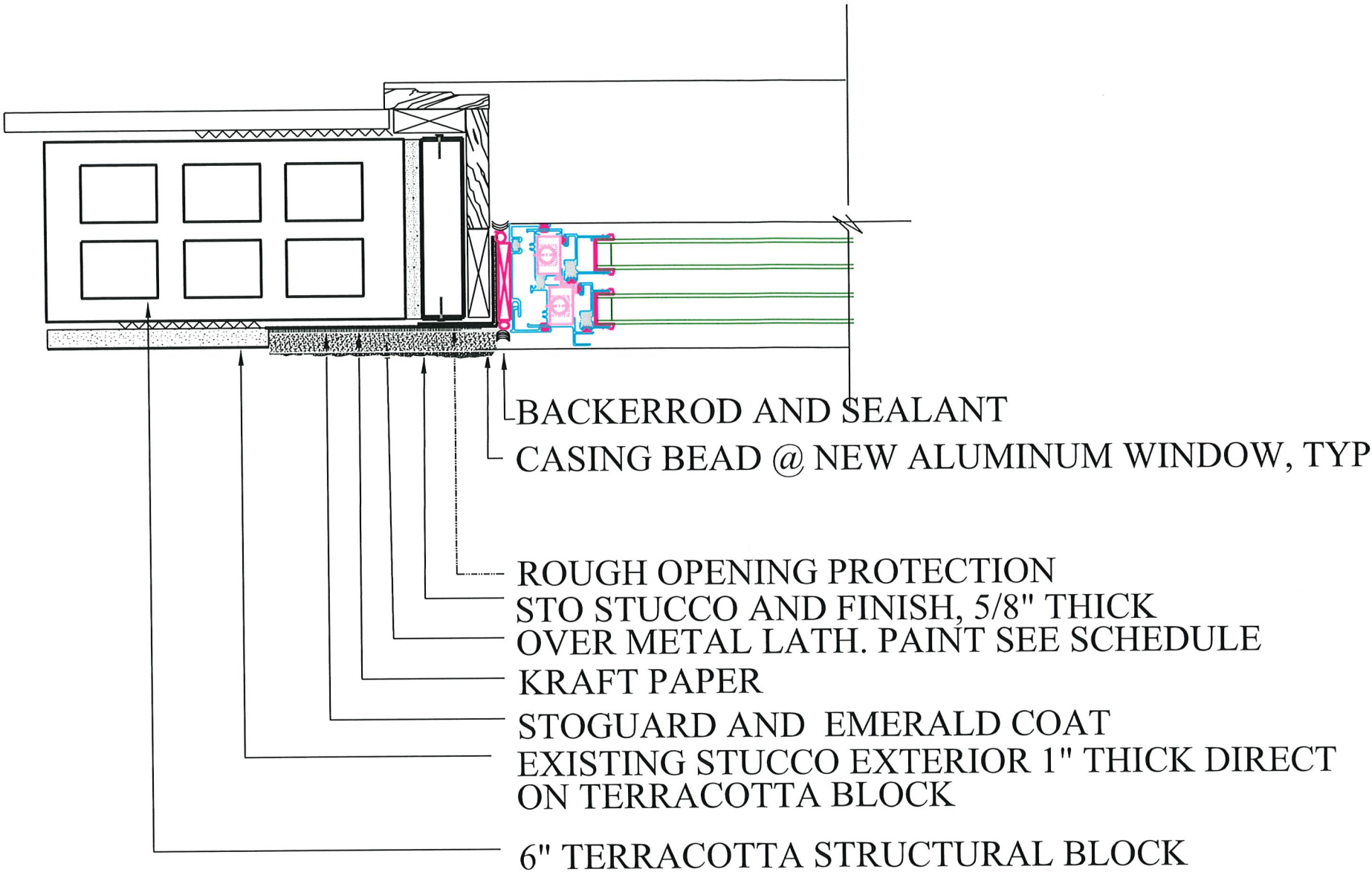
- 5th Floor 37'-4"
- 4th Floor 28'-0"
- 3rd Floor 18'-8"
- 2nd Floor 9'-4"
- 1st Floor 0'-0"
- Basement



2 Exterior Wall at Window /PTAC Unit

SCALE: 1 1/2" = 1'-0"

*GC TO CONFIRM ALL STUCCO
DETAILS AND REPAIRS WITH
MANUFACTURER'S REP



7

Stucco Repairs @ New Window Jamb

1 1/2" = 1'-0"

5000 SERIES

3 1/4" FRAME DEPTH

TILT-IN DOUBLE HUNG WINDOW



PRODUCT OVERVIEW

From revitalizing historic buildings to revamping condominiums, the 5000 Series has done it all. Featuring multiple performance levels, to accommodate many building types, and narrow sightlines, the 5000 Series is a natural choice for a replacement tilt double hung.

STANDARD FEATURES

- > 1" Insulated glass
- > Slim sightlines
- > Tilt-in sash for easy cleaning
- > Flush hardware
- > Integral extruded pull rails at top and bottom sash
- > Burglar resistant top sash anti-drift latch
- > Class 4 Spiral balances calibrated for each sash
- > Mulls with 3050 Series fixed window
- > Stainless steel sash lock and keeper (HC rated)
- > Custodial key tilt disabling (HC and CW rated)
- > Fiberglass mesh screens

OPTIONAL FEATURES

- > Full width top and bottom latch
- > Muntin grids, applied and between the glass
- > Dedicated impost for multiple units
- > Class 2 balances
- > Class 5 Ultralift balances
- > Oriel Windows or A/C Oriel Kit
- > Flanges (3/4", 1", 1 1/2", 2")
- > Head expander

AVAILABLE ACCESSORIES

- > Receptor system
- > Panning
- > Trim

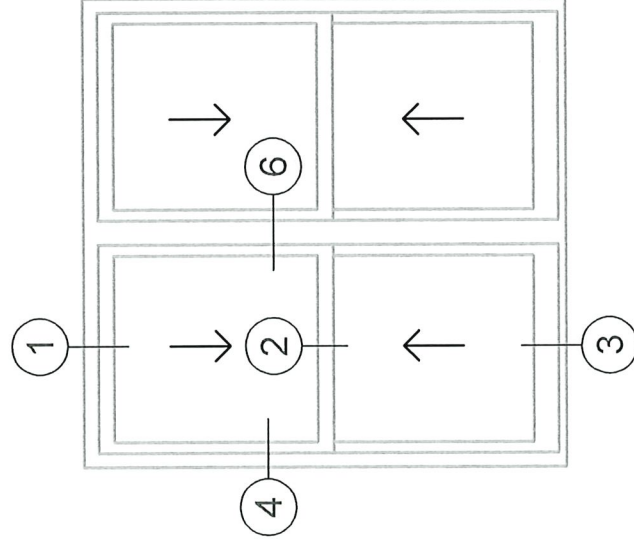
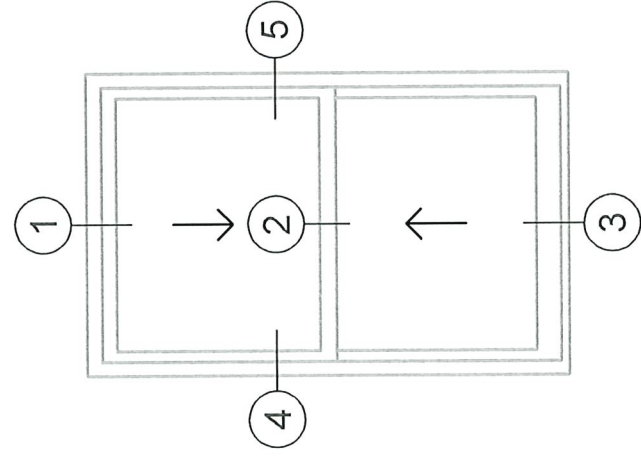
MODEL	AAMA RATING	STRUCTURAL LOAD (psf)	TEST SIZE	WIND SPEED (mph)	AIR (cfm/ft ²)	WATER (psf)	U-VALUE ¹
5000-C	C-65	97.5	56" x 91"	25 (1.6 psf)	<0.2	10	0.34 - 0.45
5000-CW	CW-50 / 55 / 70*	75 / 82.5 / 105*	56" x 91"	25 (1.6 psf)	<0.2	10	0.34 - 0.45
5000-HC	HC-55 / 70*	82.5 / 105*	60" x 99"	50 (6.24psf)	<0.3	10	0.34 - 0.45
5000-AW	AW-40 / 70*	60 / 105*	60" x 99"	50 (6.24psf)	<0.3	10	0.34 - 0.45

* Down-sized testing
Performance data based on testing by AAMA Accredited Laboratory, NFRC Simulation software or independent testing. Actual results will vary based on field conditions, locations, size/configurations or glazing options. Be sure to verify the performance requirements for your particular project. ¹ U-Values will vary depending on the glazing selected. Please contact Northern for further information.



5000 SERIES - 5000C TILT DOUBLE HUNG

TYPICAL CONFIGURATION
(OUTSIDE LOOKING IN)

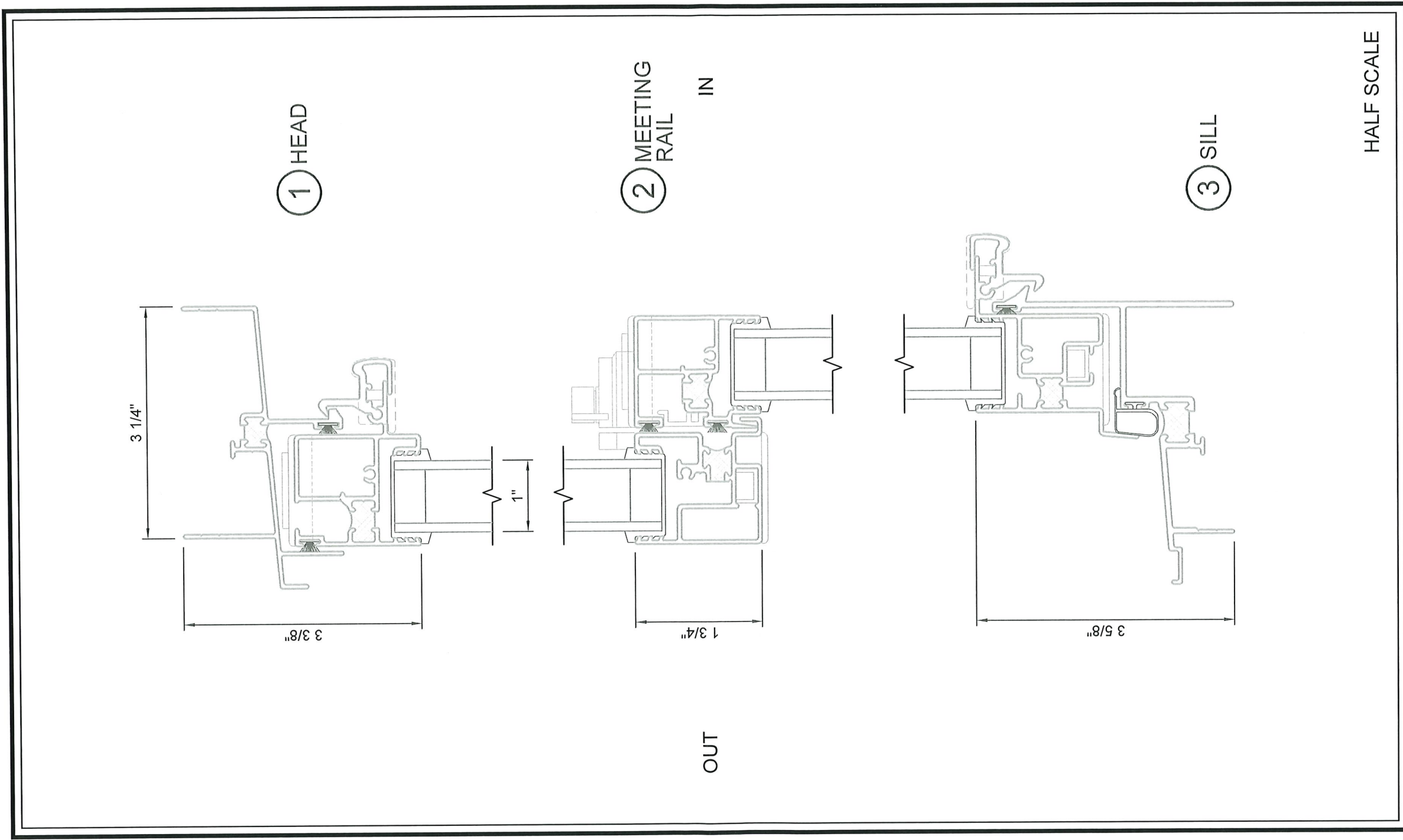


CONTRACT NORTHERN FOR OTHER CONFIGURATIONS NOT SHOWN

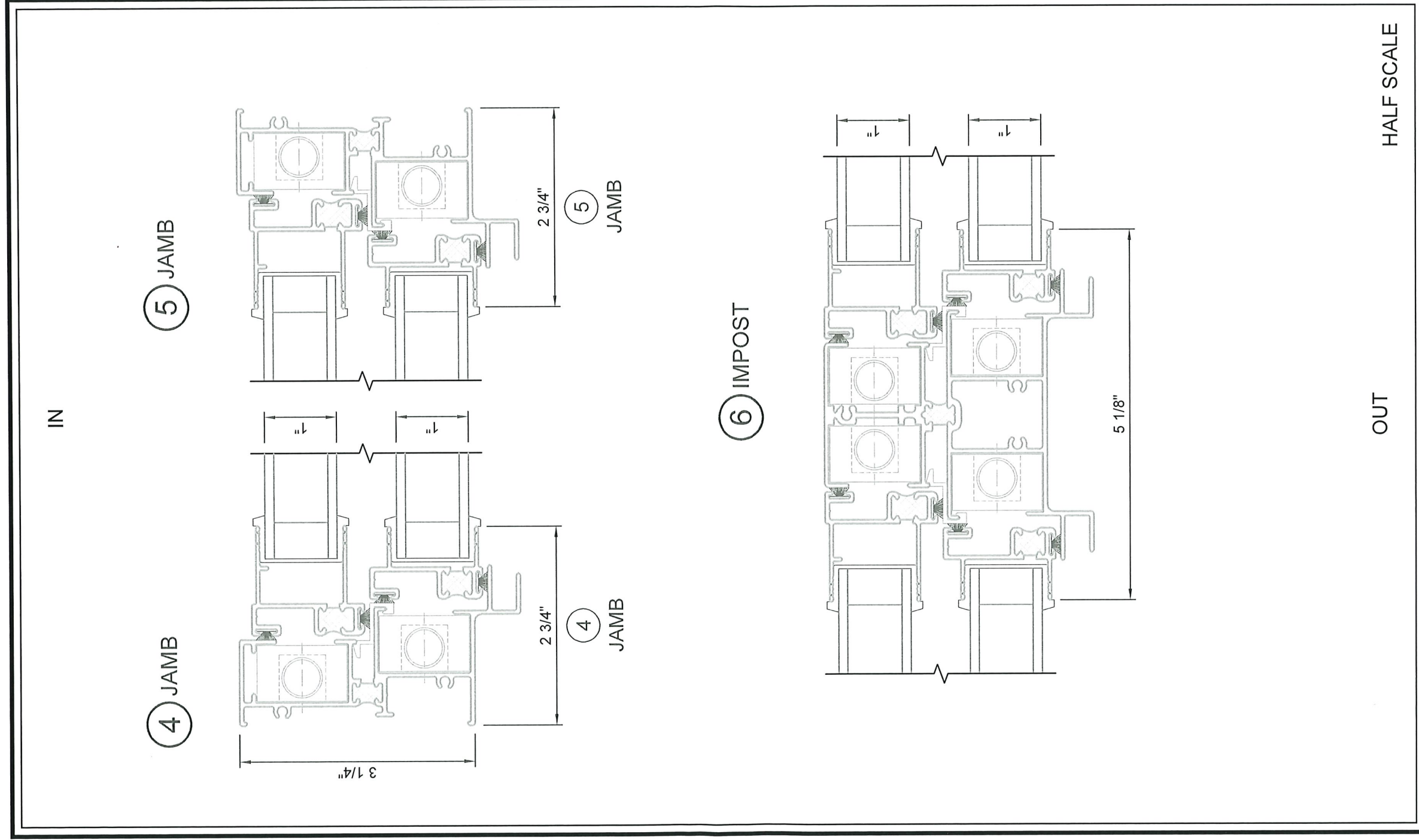


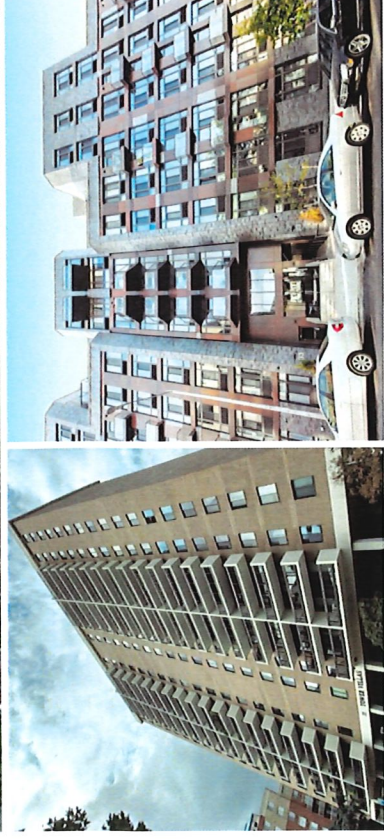
NORTHERN
ARCHITECTURAL SYSTEMS, INC.

5000 SERIES - 5000C TILT DOUBLE HUNG



5000 SERIES - 5000C TILT DOUBLE HUNG





PRODUCT OVERVIEW

One of our most popular windows, the 4000 Series can effortlessly compliment a broad range of project types. Multiple performance levels make the 4000 Series at home in both low-rise and high-rise apartment buildings. Featuring durable, easy slide hardware, the 4000 Series is the natural choice for a sliding window.

STANDARD FEATURES

- > 7/8" Insulated glass
- > OX / XO Configurations
- > Removable sash for easy cleaning and maintenance
- > Integral extruded pull rails
- > Spring loaded stainless steel keeper and high pressure zinc die cast sash lock
- > Elevated roller tracks
- > Fully adjustable rollers with QUIET-TREAD roller bearings (Models 4000/1)
- > Fully adjustable "sash in place" rollers with stainless steel needle roller bearings (Model 4002)
- > Fiberglass mesh screens

OPTIONAL FEATURES

- > Alternate handle options
- > XX / XOX / OXO Configurations
- > Stainless steel covered rail for durability and performance (standard on 4002)
- > Flanges (1", 1 1/2", 2")
- > Head expander

AVAILABLE ACCESSORIES

- > Receptor system
- > Trims

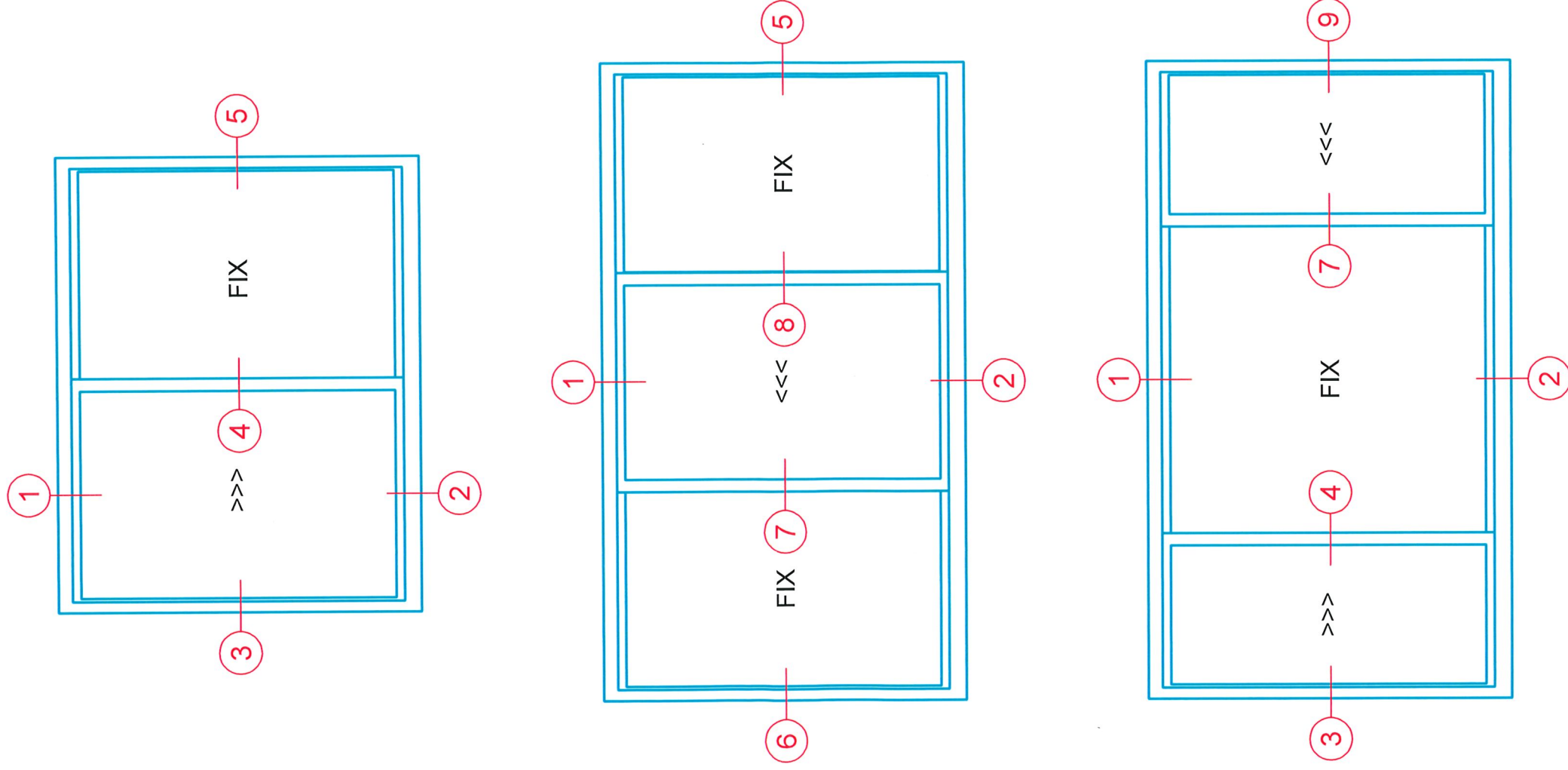
MODEL	AAMA RATING	STRUCTURAL LOAD (psf)	TEST SIZE	WIND SPEED (mph)	AIR (cfm/ft ²)	WATER (psf)	U-VALUE ¹
4000	CW-50	75	71" x 60"	25 (1.6psf)	<0.2	7.5	0.35 - 0.45
4001	CW-60	90	71" x 60"	25 (1.6psf)	<0.2	10	0.35 - 0.45
4002-CW	CW-50	75	71" x 60"	25 (1.6psf)	<0.2	10	0.35 - 0.45
4002-AW	AW-50	75	99" x 79"	50 (6.24psf)	<0.3	11	0.35 - 0.45
4032-AW	AW-50	75	149" x 79"	50 (6.24psf)	<0.3	10	0.35 - 0.45

Performance data based on testing by AAMA Accredited Laboratory, NFRC Simulation software or independent testing. Actual results will vary based on field conditions, locations, size/configurations or glazing options. Be sure to verify the performance requirements for your particular project. *U-Values will vary depending on the glazing selected. Please contact Northern for further information.



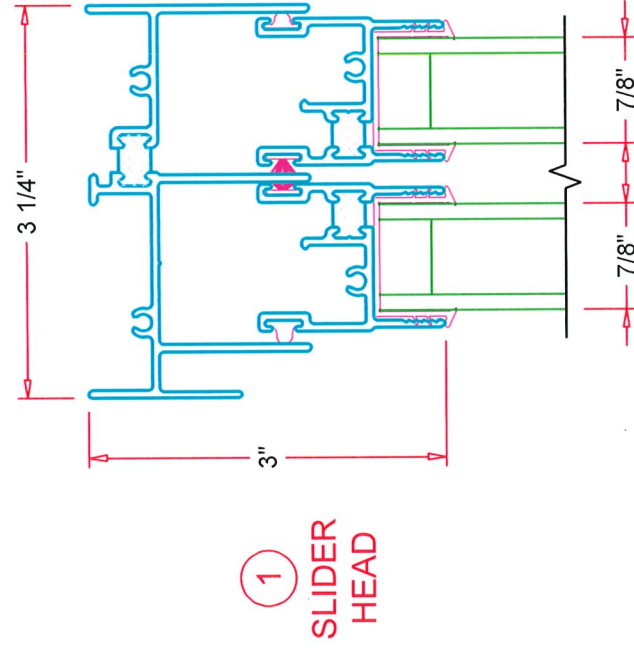
Model 4000 Horizontal Slider

TYPICAL CONFIGURATION
(INSIDE LOOKING OUT)



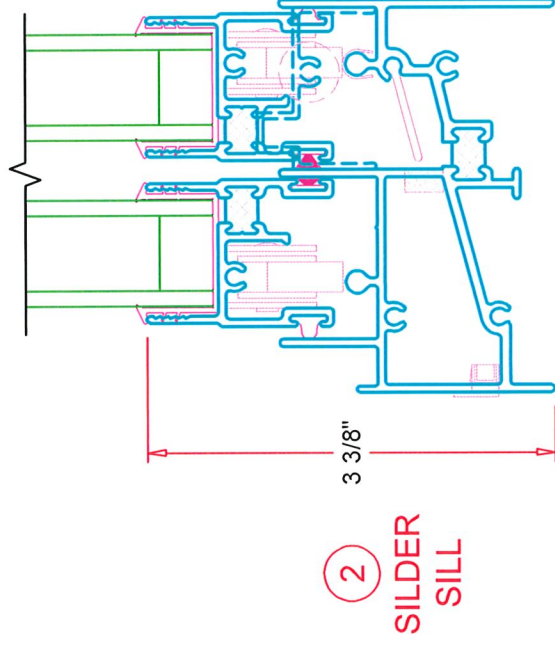
CONTRACT NORTHERN FOR OTHER CONFIGURATIONS NOT SHOWN

Model 4000 Horizontal Slider



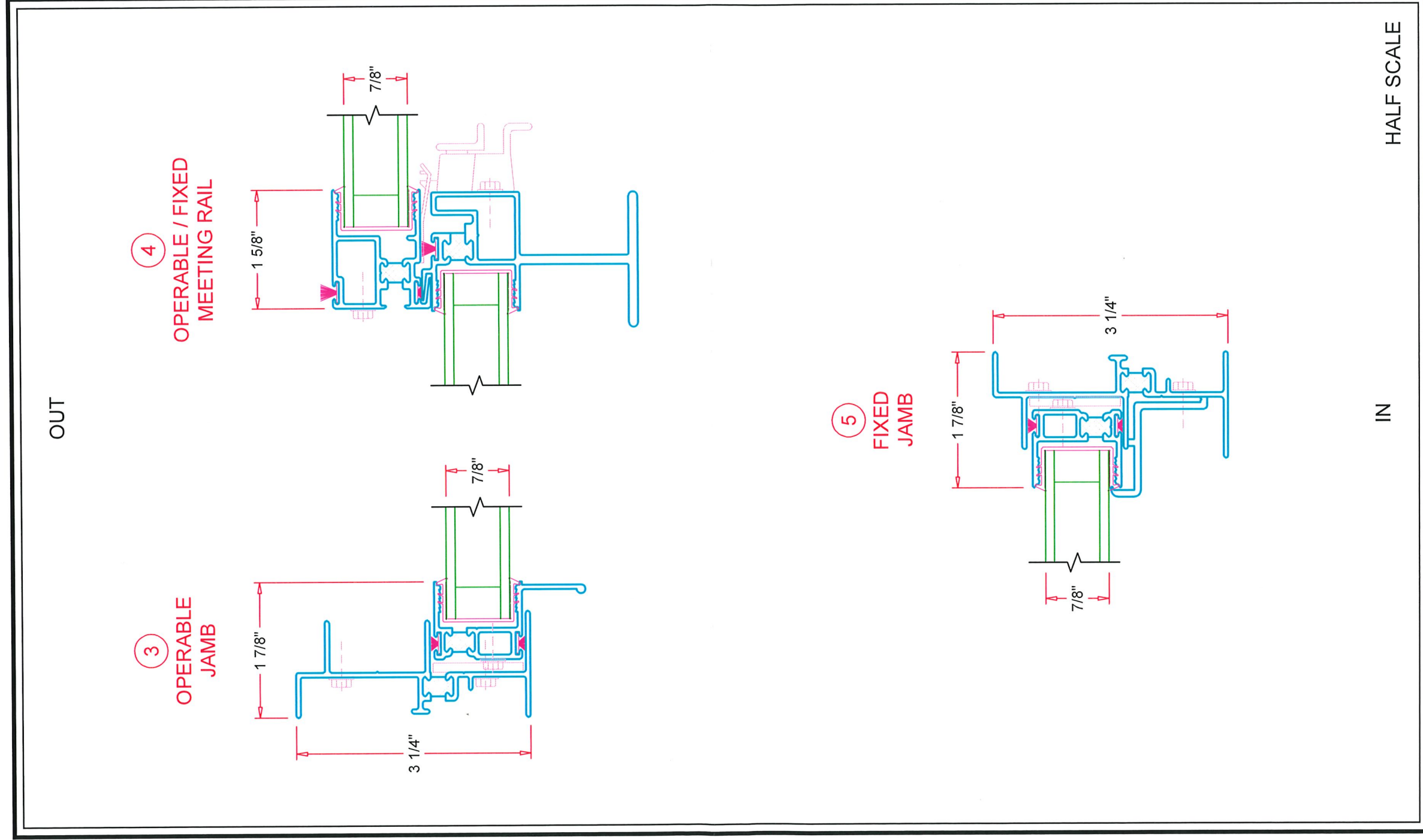
OUT

IN



HALF SCALE

Model 4000 Horizontal Slider





NORTHERN
BUILDING PRODUCTS, INC.

Model 4000 Horizontal Slider

