

727 MASSACHUSETTS AVENUE
CAMBRIDGE HISTORICAL COMMISSION
MARCH 3, 2022



1

FOLLOW-UP RESPONSE TO THE FEBRUARY 3, 2022 CAMBRIDGE HISTORIC COMMISSION HEARING

1. The frame and parapet height of the proposed hotel addition have been lowered by two feet.
2. The angled frame width elements have been made symmetrical and reduced to be equal on all sides to reduce heaviness.
3. The window area has enlarged in the hotel rooms to make the proposed addition lighter and less bulky.
4. The horizontal louver system has been made thinner and window pattern simplified.
5. The overall color and materials for the proposed addition have been unified to a single color and made simpler.
6. In summary, the hotel addition has been reduced in height, massing, bulk and presence, resulting in a simpler, quieter and more deferential approach to the existing historic Gas & Light Building.

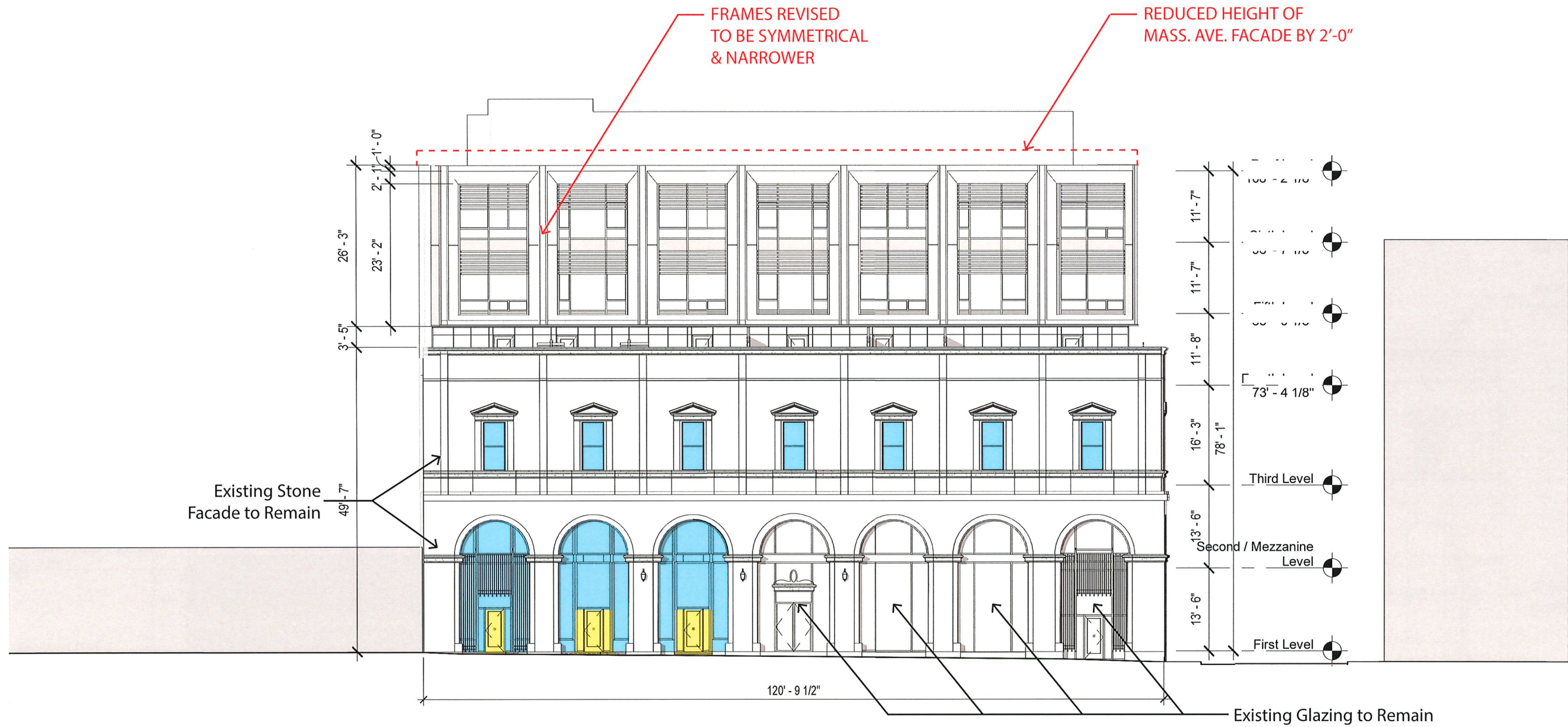
Previous Design - South Elevation - Massachusetts Ave.



South Elevation

- New Insulated Glazing Units
- New Accessible Entries

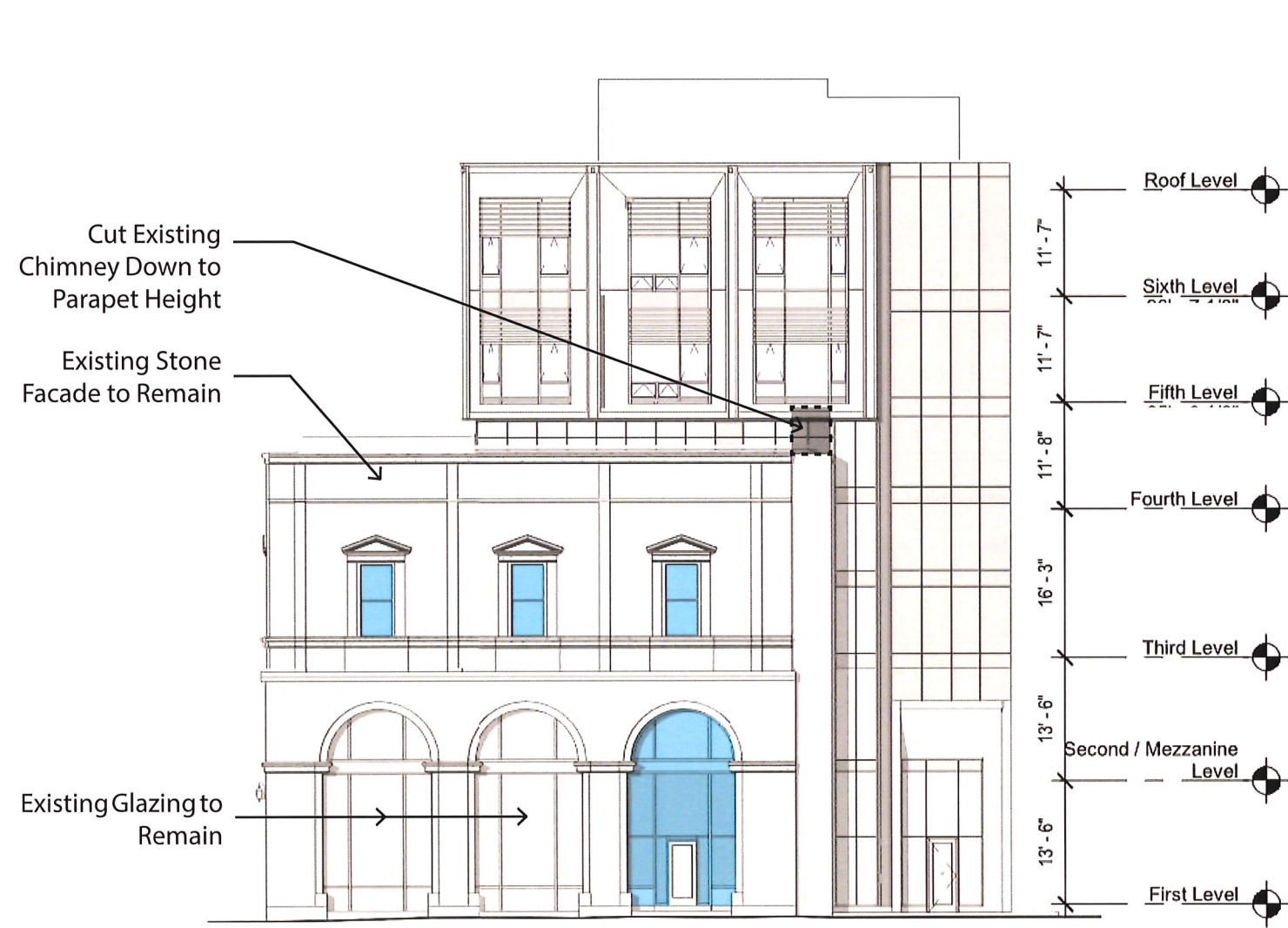
Revised Design - South Elevation - Massachusetts Ave.



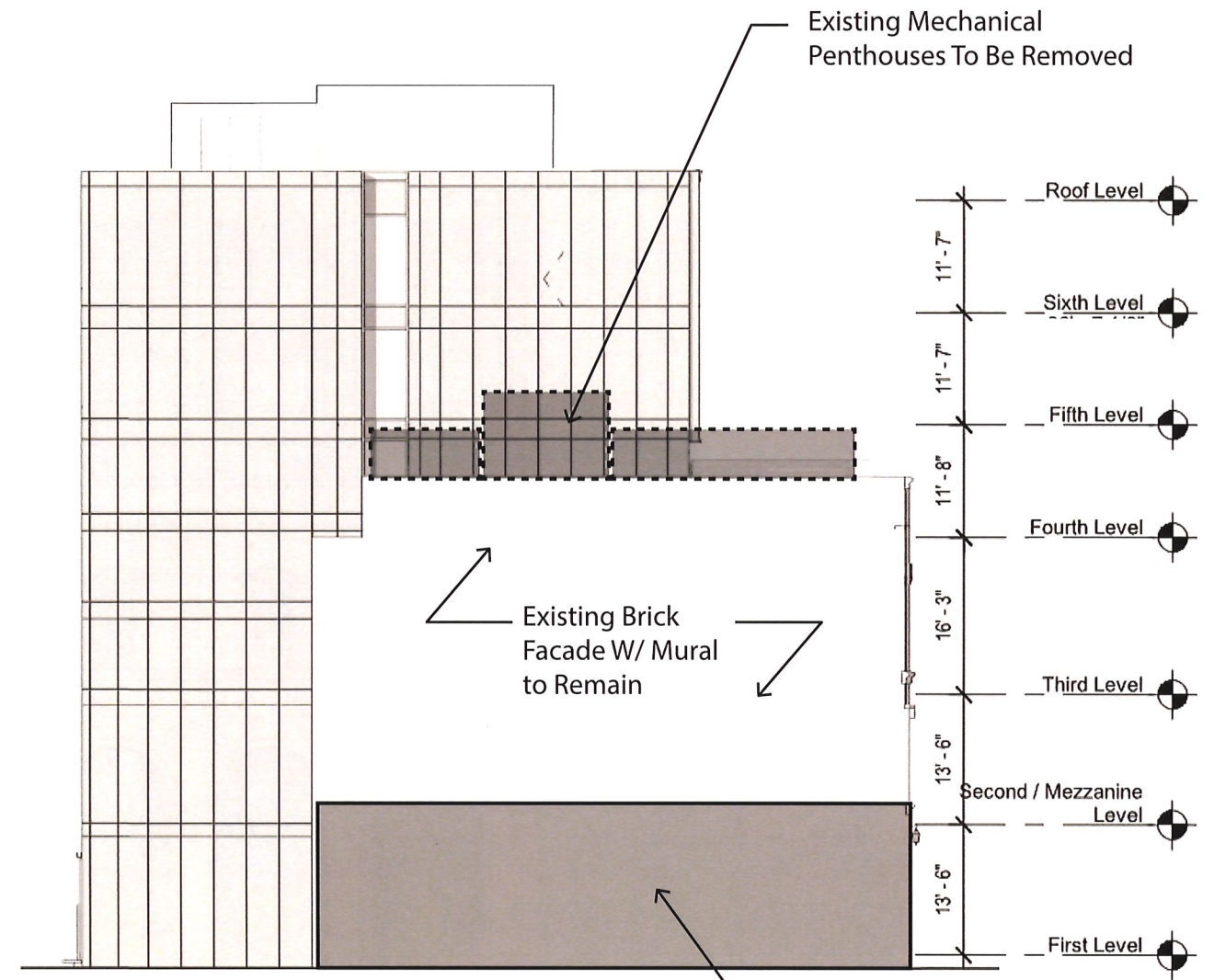
South Elevation

- New Insulated Glazing Units
- New Accessible Entries

Previous Design - East (Temple Street) & West Elevations



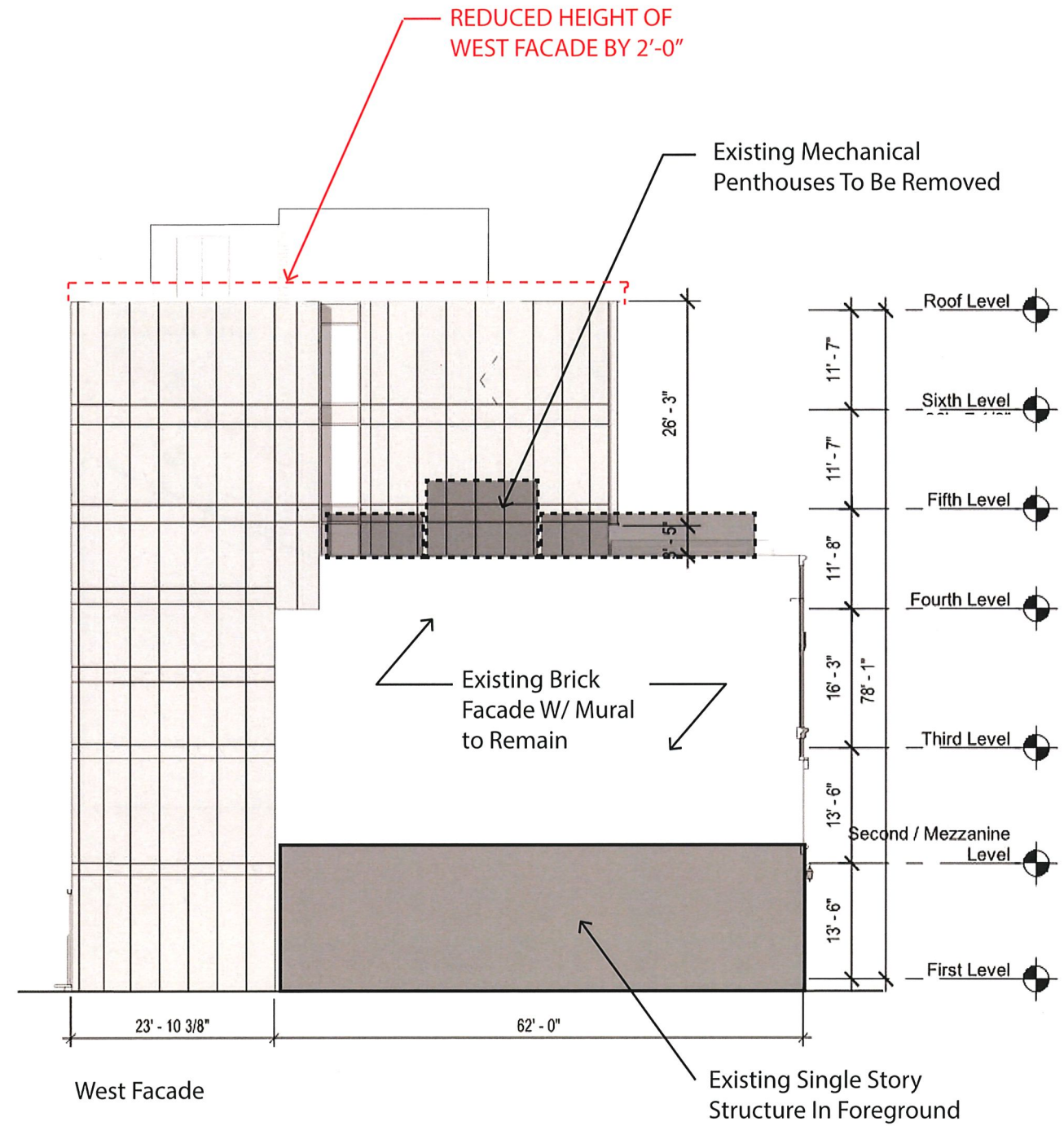
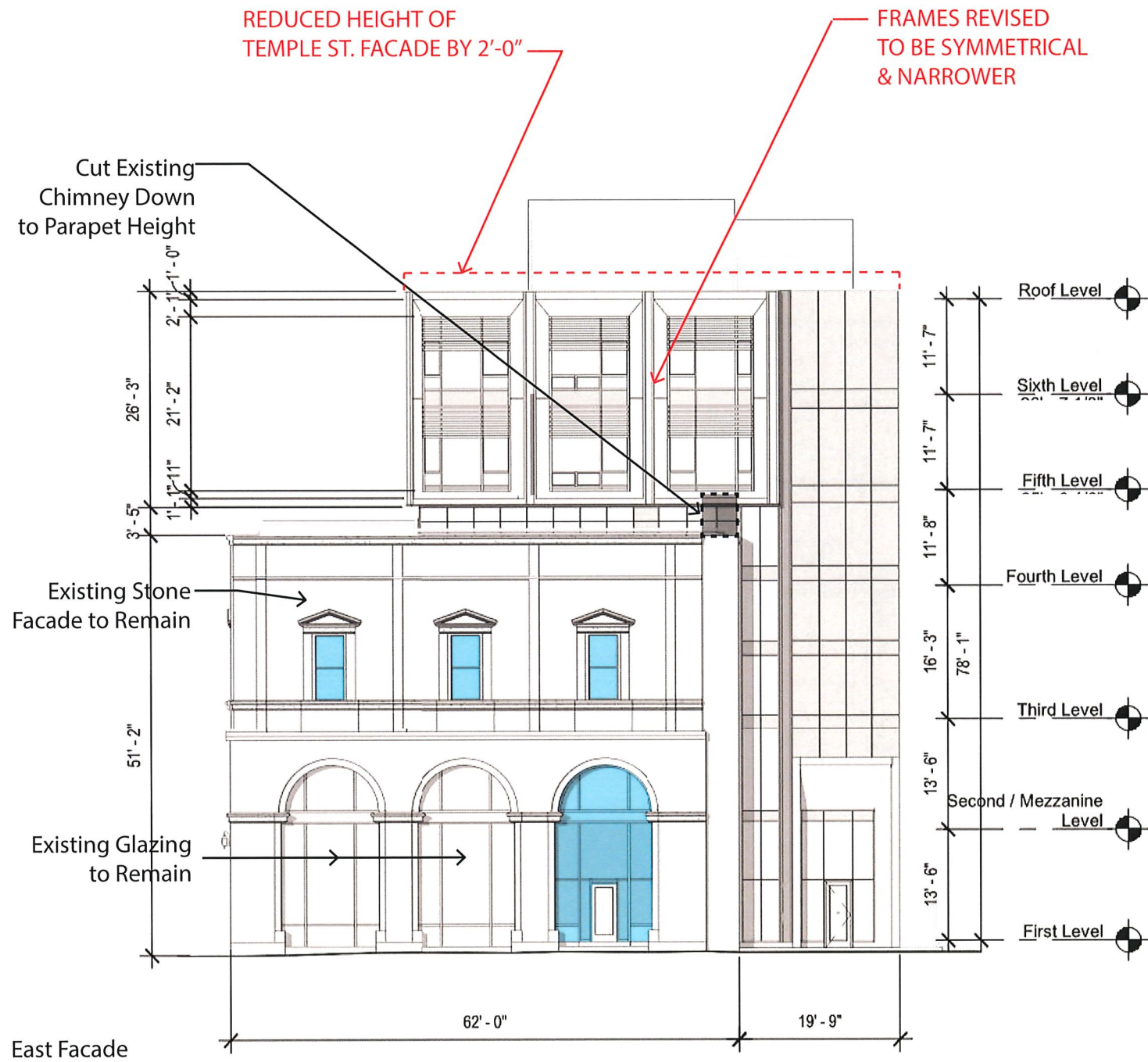
East Facade



West Facade

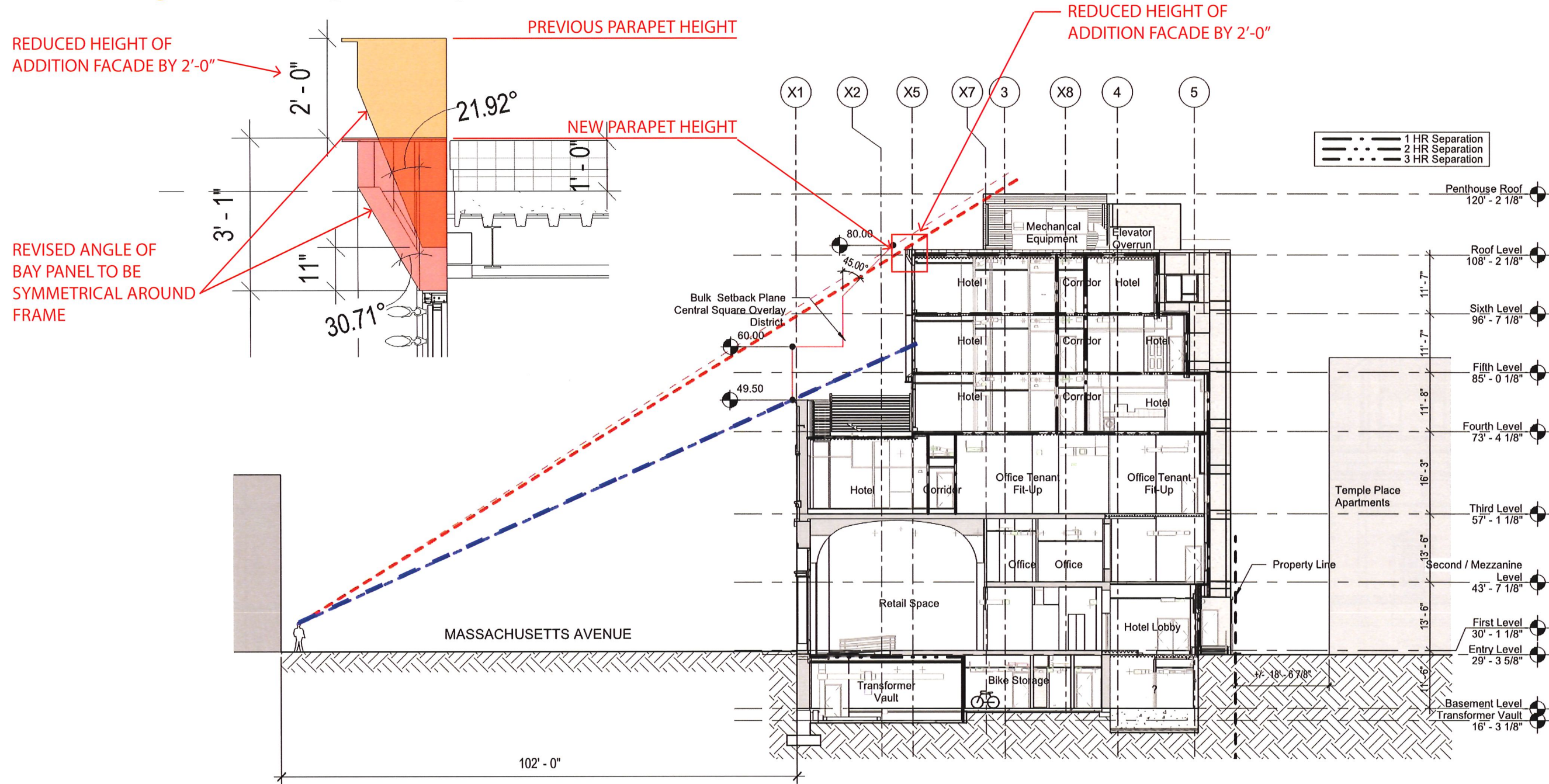
■ New Insulated Glazing Units

Revised Design - East (Temple Street) & West Elevations



■ New Insulated Glazing Units

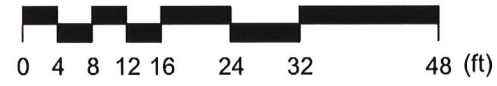
Revised Design- Sectional Sightline Diagram From Across Massachusetts Avenue



Section 2

727 Massachusetts Avenue
727 Massachusetts Avenue Cambridge, MA 02139

Finegold Alexander Architects Inc
05/25/21



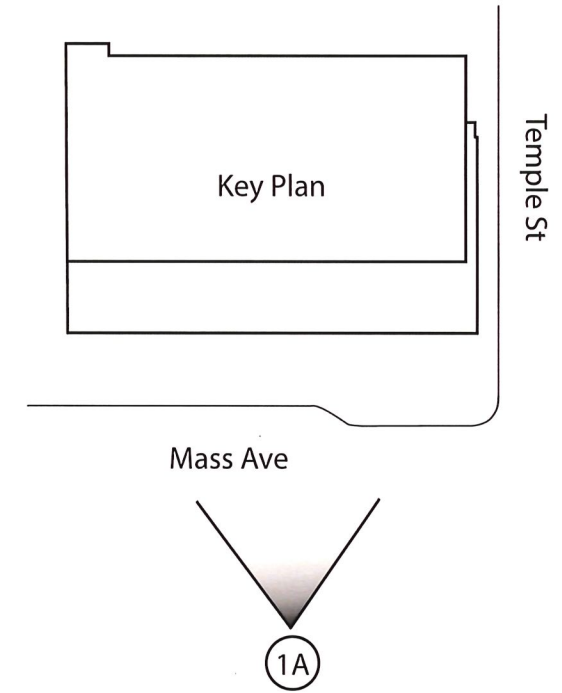
2

RENDERED VIEWS

Previous Design - Renderings



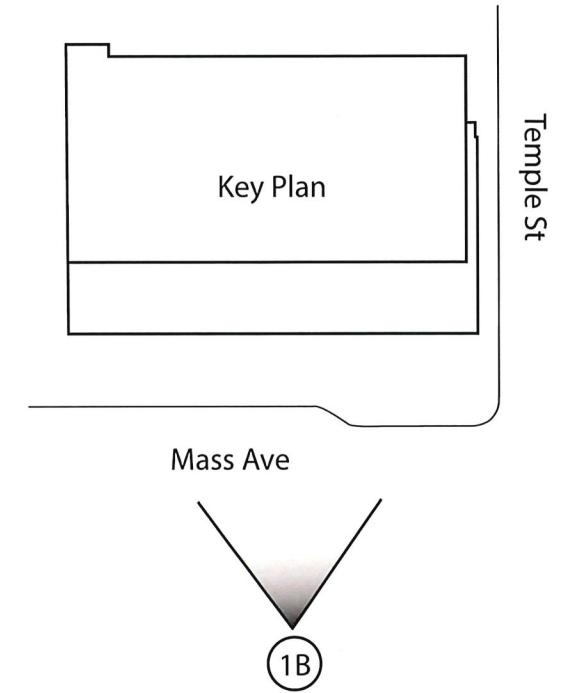
1A View from Massachusetts Ave Looking North



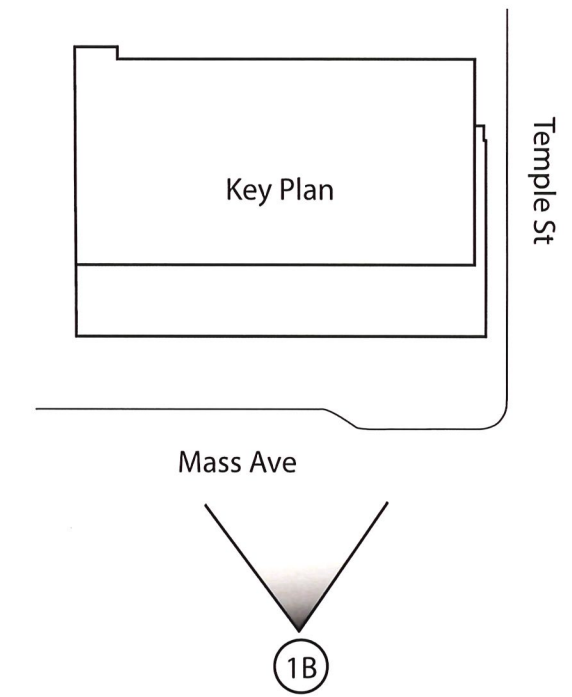
Revised Design - Proposed Renderings



1B View from Massachusetts Ave Looking North

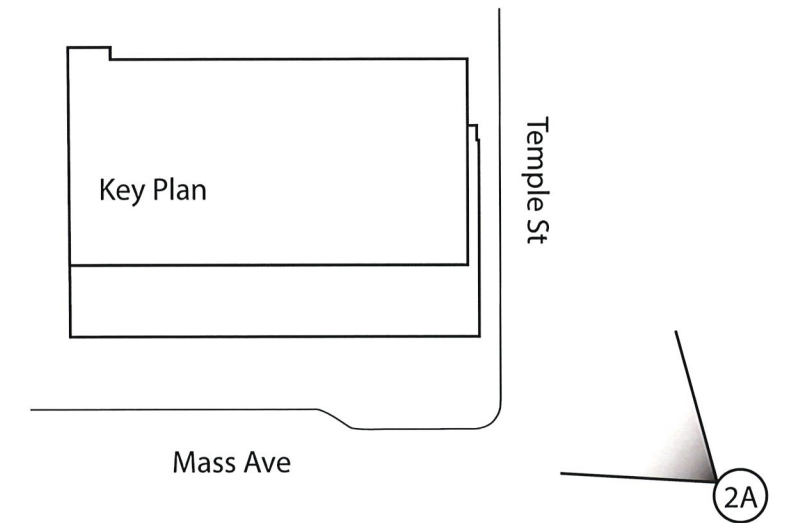


Revised Design - Proposed Renderings - Alternate Grey



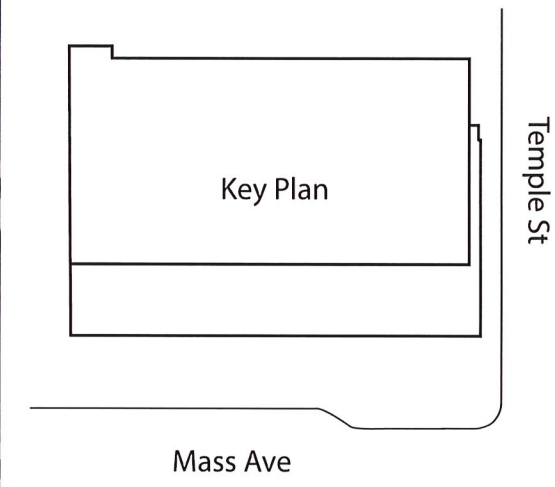
1B View from Massachusetts Ave Looking North

Previous Design - Renderings



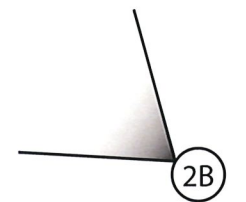
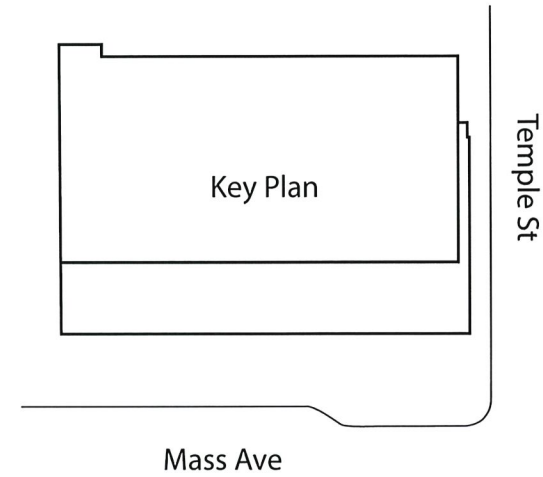
2A View from Massachusetts Ave Looking West

Revised Design - Proposed Renderings



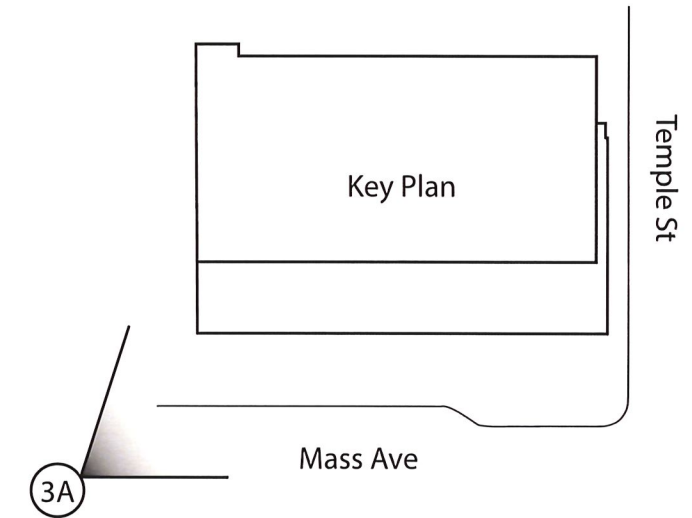
2B) View from Massachusetts Ave Looking West - Camera Angle Pulled Back & Placed On Sidewalk Vs. In Street To Show Context & More Realistic View Angle

Revised Design - Proposed Renderings - Alternate Grey



2B) View from Massachusetts Ave Looking West - Camera Angle Pulled Back & Placed On Sidewalk Vs. In Street To Show Context & More Realistic View Angle

Previous Design - Renderings

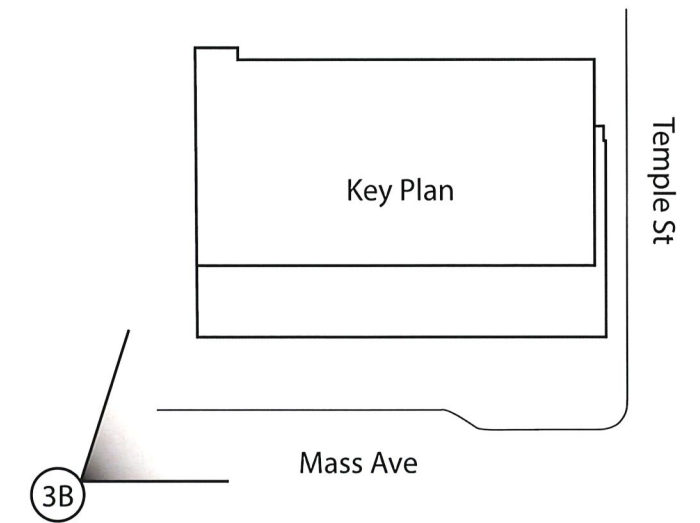


3A View from Massachusetts Ave Looking East

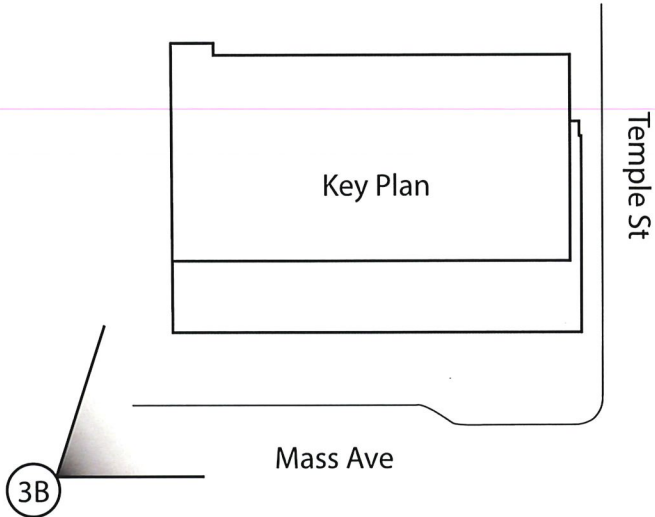
Revised Design - Proposed Renderings



3B View from Massachusetts Ave Looking East



Revised Design - Proposed Renderings

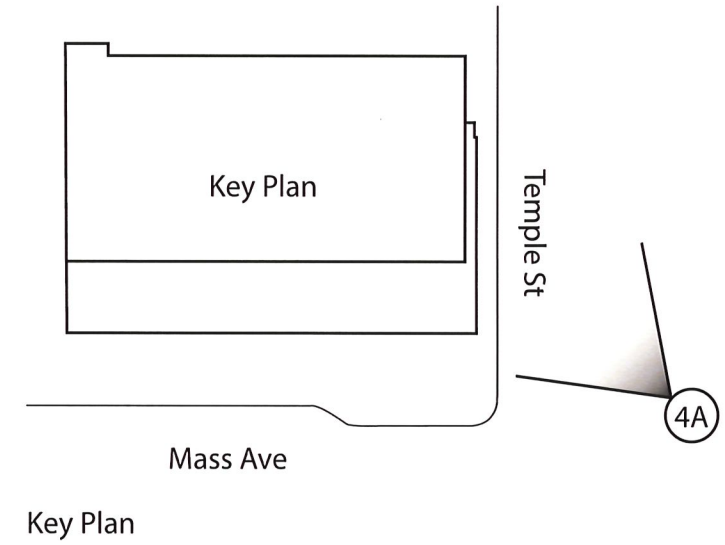


3B View from Massachusetts Ave Looking East

Previous Design - Renderings



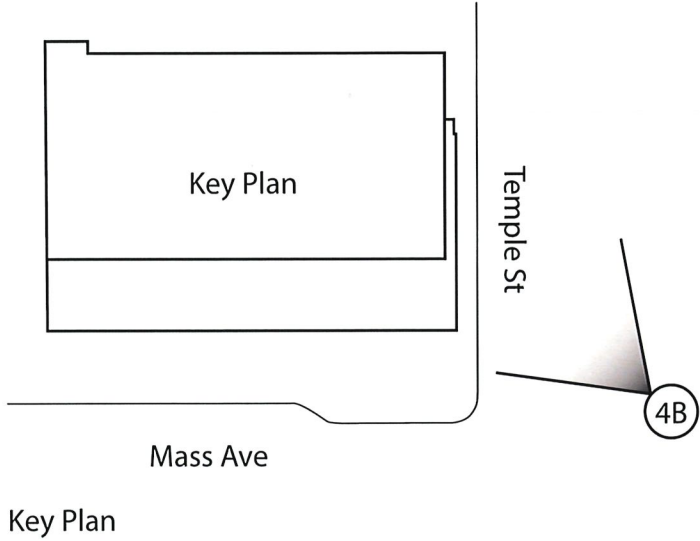
4A View from Temple Street



Revised Design - Proposed Renderings



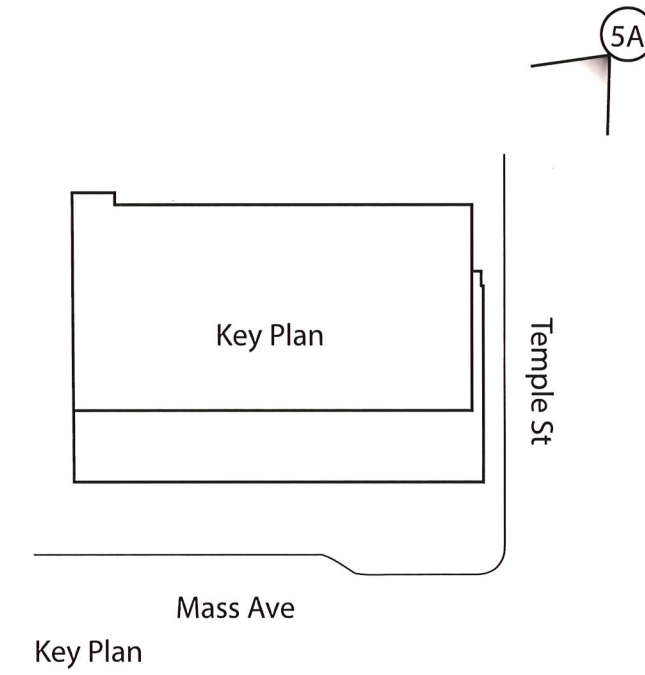
4B View from Temple Street



Previous Design - Renderings



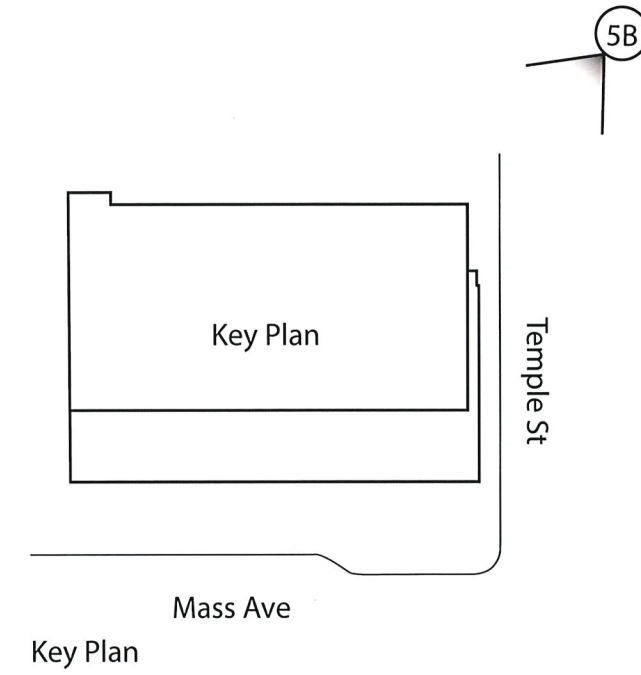
5A View of Hotel Entry From Temple Street - Near



Revised Design - Proposed Renderings



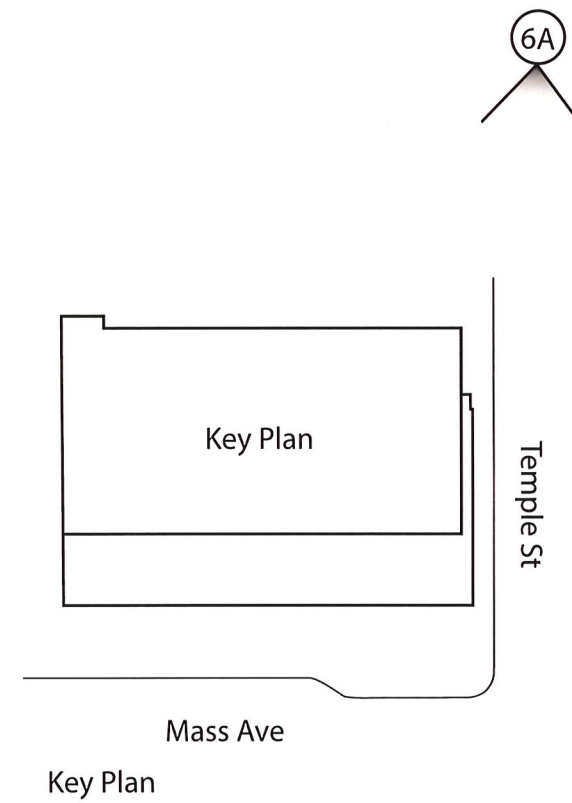
5B View of Hotel Entry From Temple Street - Near



Previous Design - Renderings



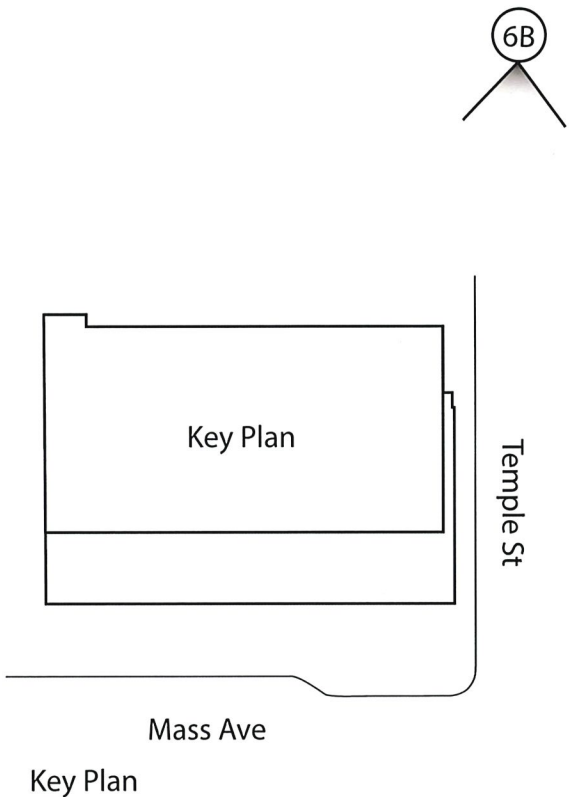
6A View of Hotel Entry From Temple Street - Far



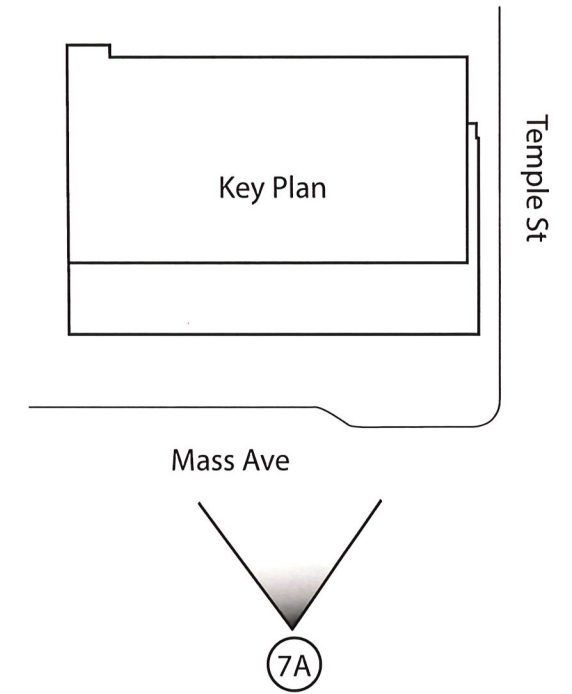
Revised Design - Proposed Renderings



6B View of Hotel Entry From Temple Street - Far

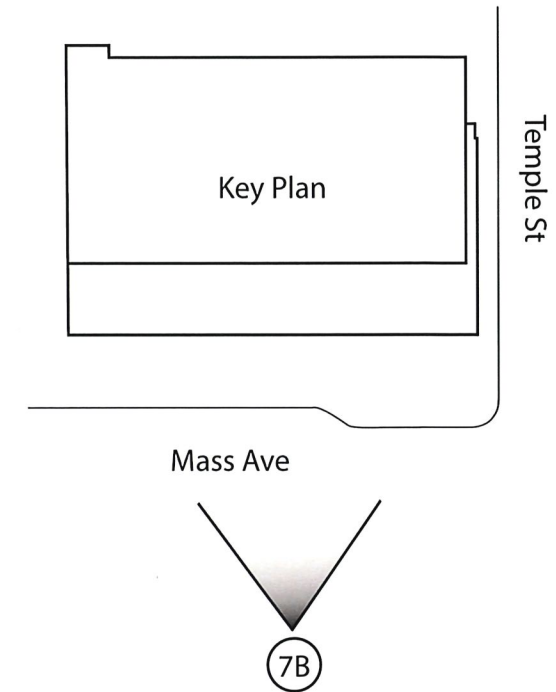


Previous Design - Renderings



7A View from Massachusetts Ave Looking North - Dusk Rendering

Revised Design - Proposed Renderings



7B) View from Massachusetts Ave Looking North - Dusk Rendering

