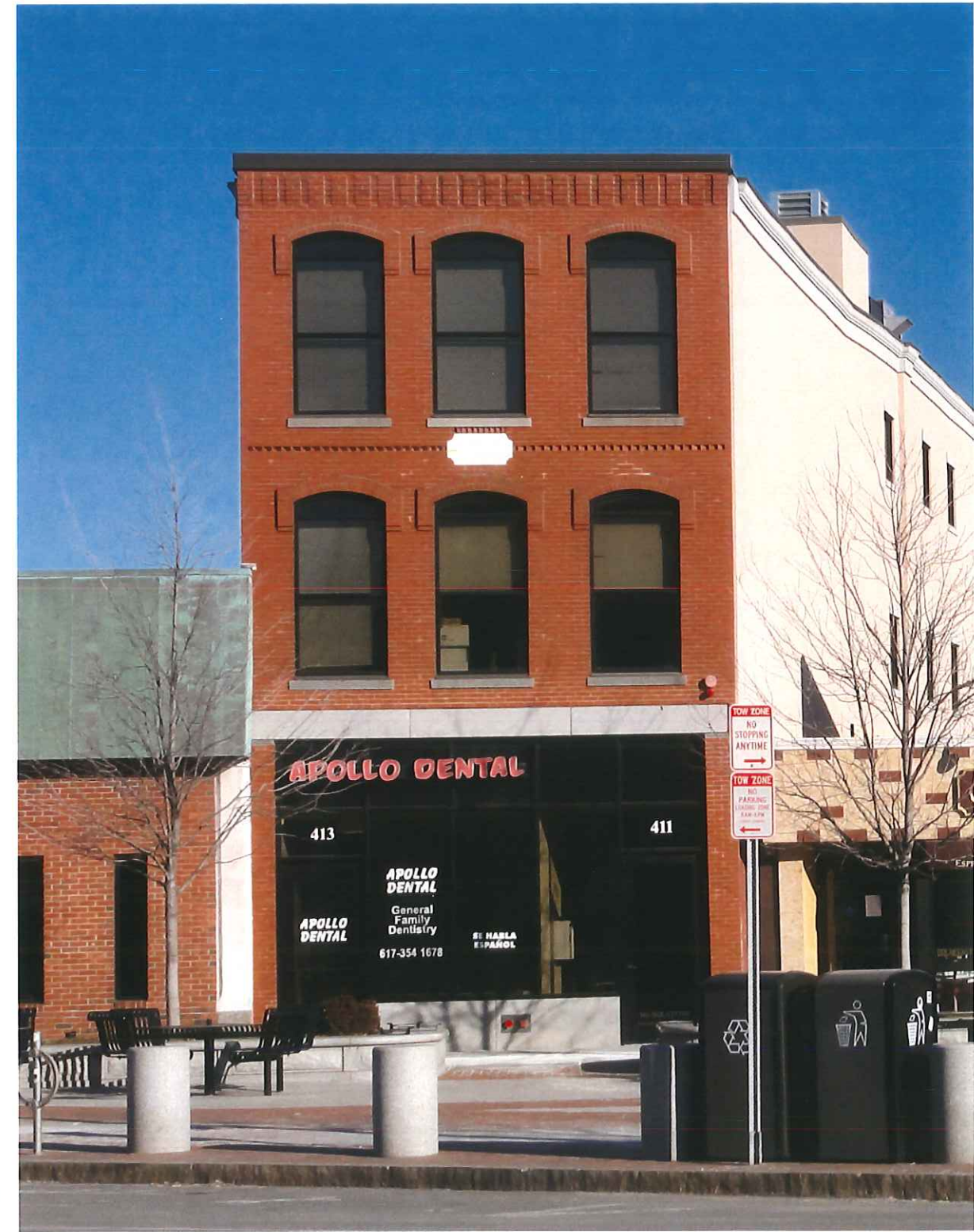


# 411 MASS AVE BUILDING RENOVATION

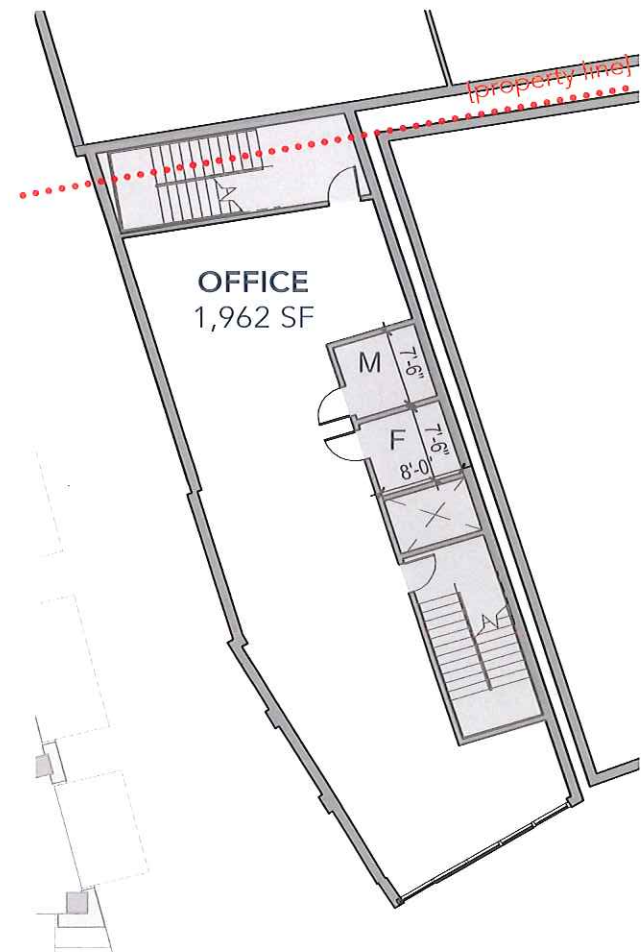
JUNE 9 2017

RECEIVED  
D-1456  
JUN 12 2017

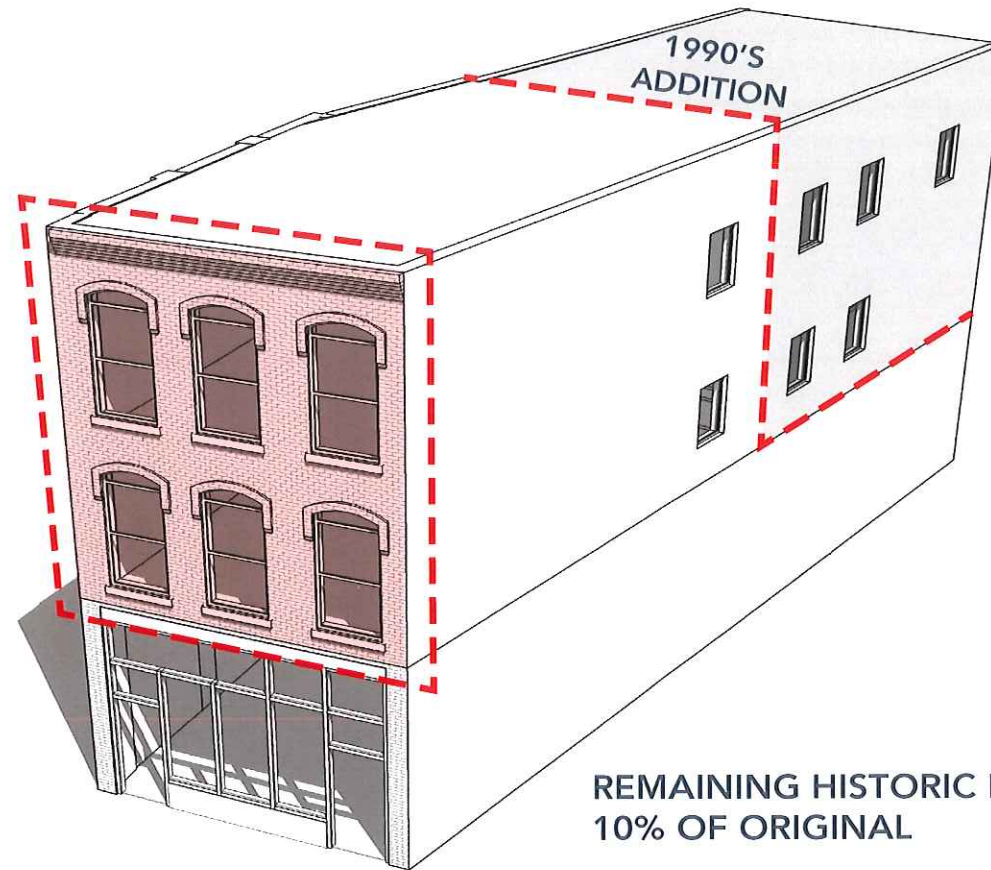
# EXISTING FRONT FACADE



# 411-413 MASS AVE : HISTORIC ASSESSMENT



LIMITED  
USABLE SPACE  
35% LOSS

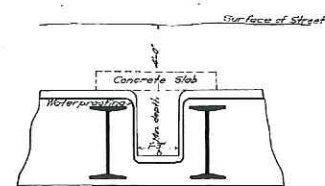
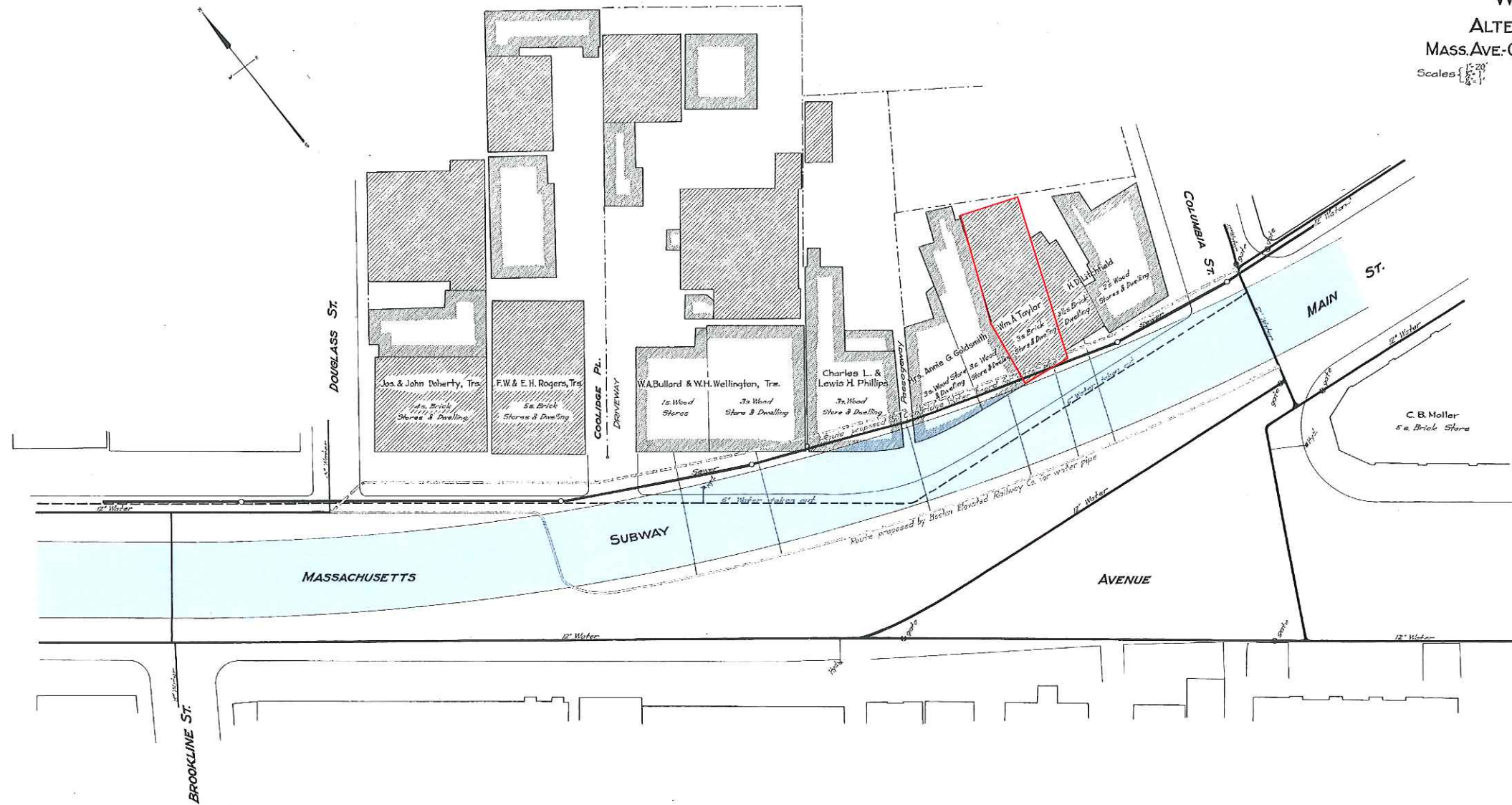


1990'S ADDITION

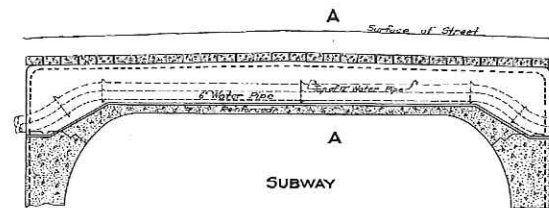


# HISTORY OF INFRASTRUCTURE

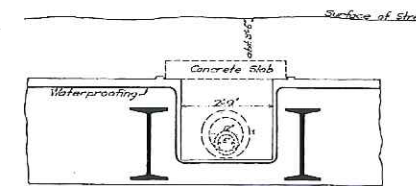
BOSTON ELEVATED RAILWAY  
 ELEVATED & SUBWAY CONSTRUCTION  
**CAMBRIDGE MAIN ST. SUBWAY**  
 PROPOSED RELOCATION OF  
**WATER PIPES**  
 ALTERNATE ROUTES  
 MASS. AVE. - COLUMBIA ST. TO DOUGLASS ST.  
 Scales:  $\frac{15}{8} = 1$ ,  $\frac{1}{2} = 1$   
 November 1910.



PIPE CROSSING FOR SERVICE PIPES  
 Scale:  $\frac{1}{2} = 1$

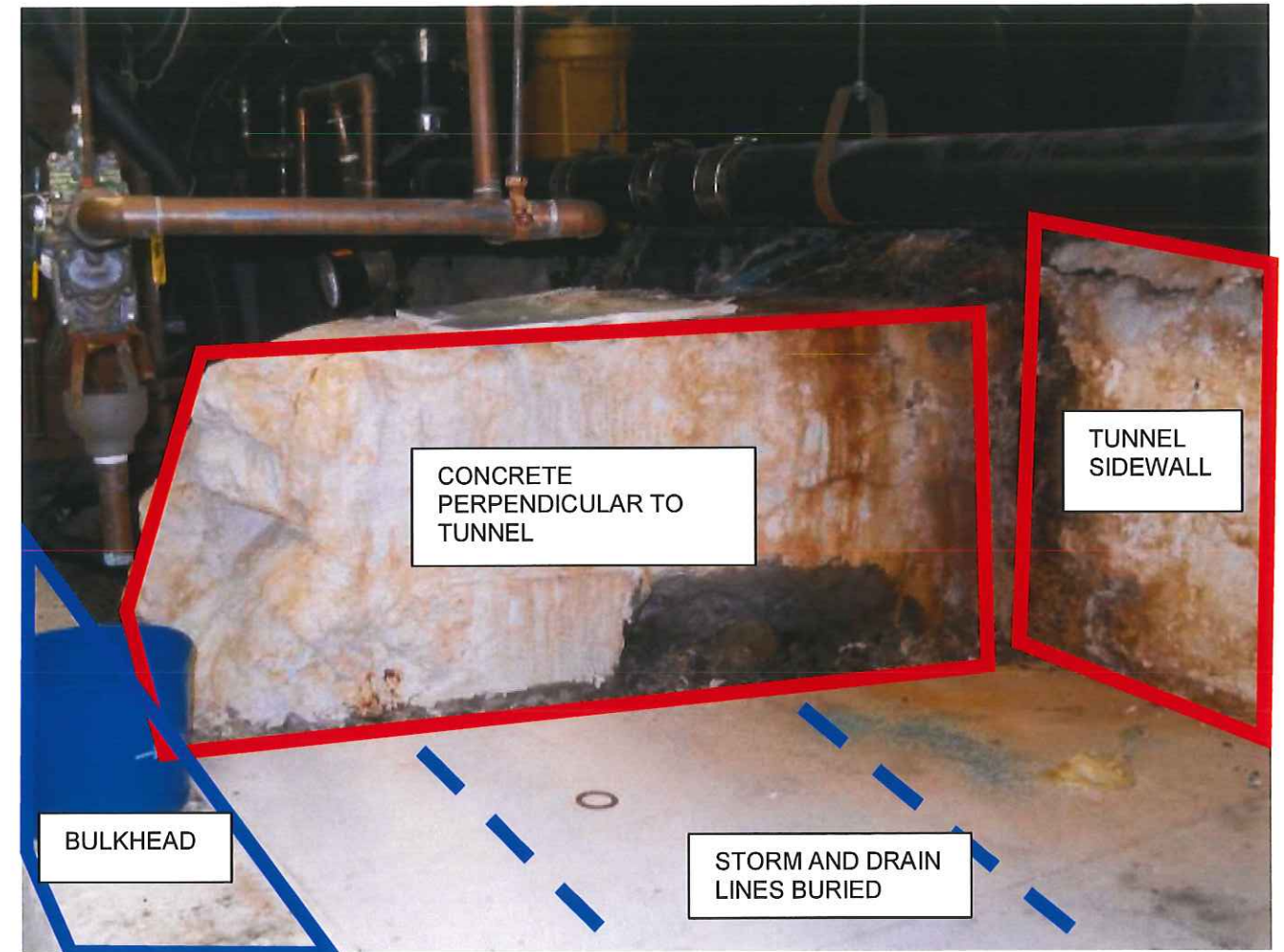
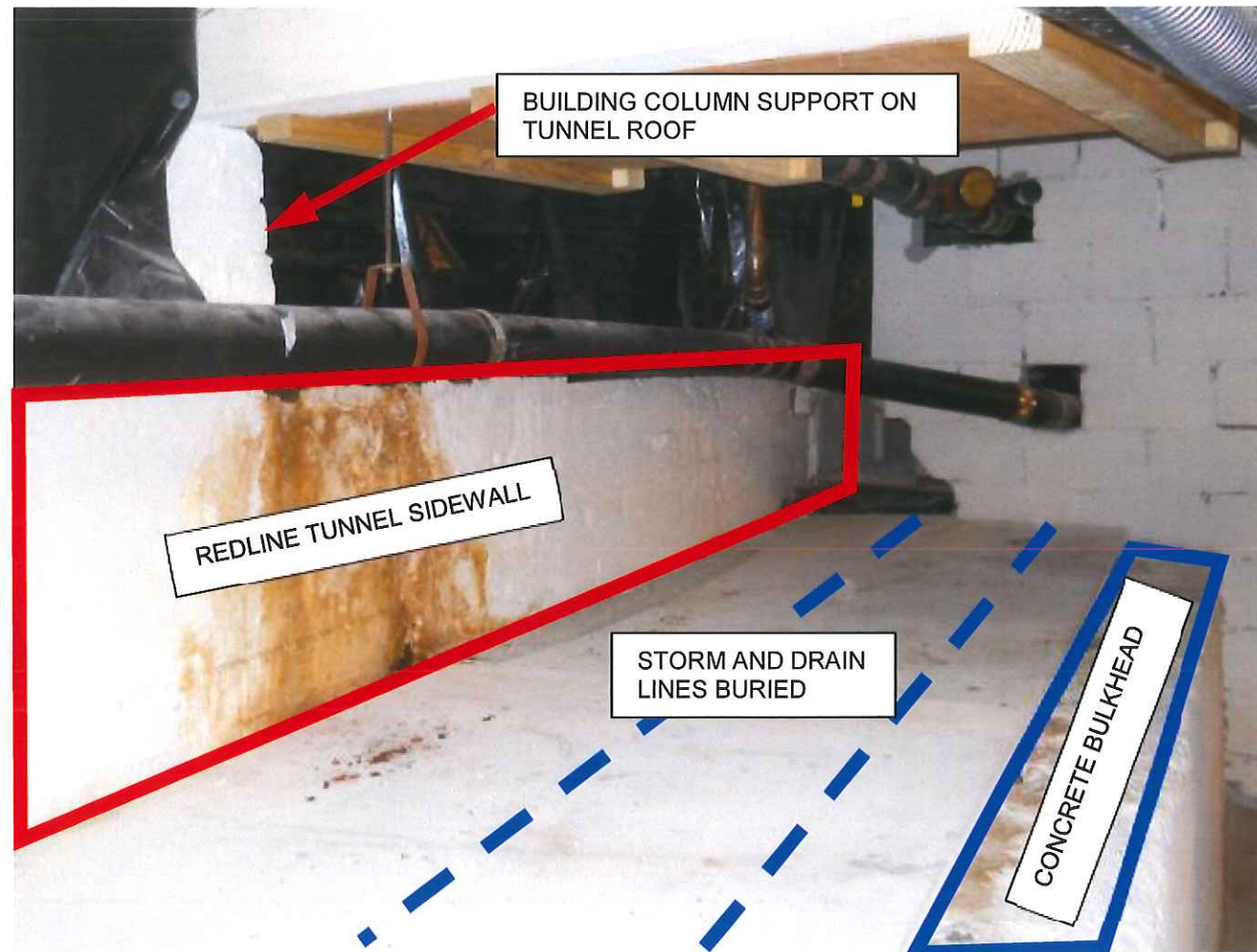


PIPE CROSSING NEAR COOLIDGE PLACE



SECTION A-A  
 Scale:  $\frac{1}{2} = 1$

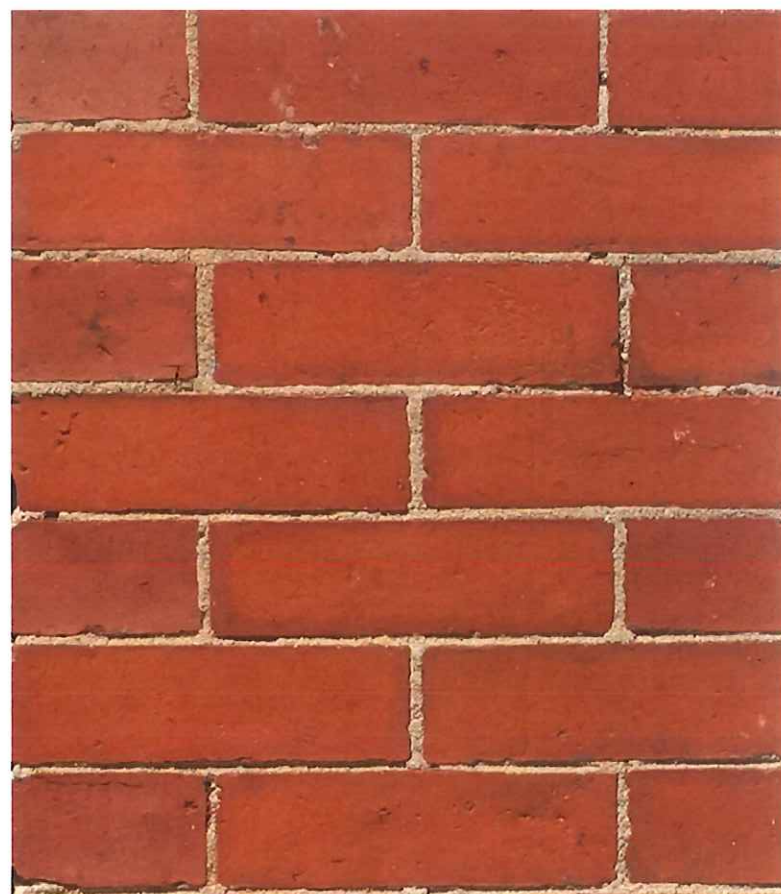
# 411-413 MASS AVE



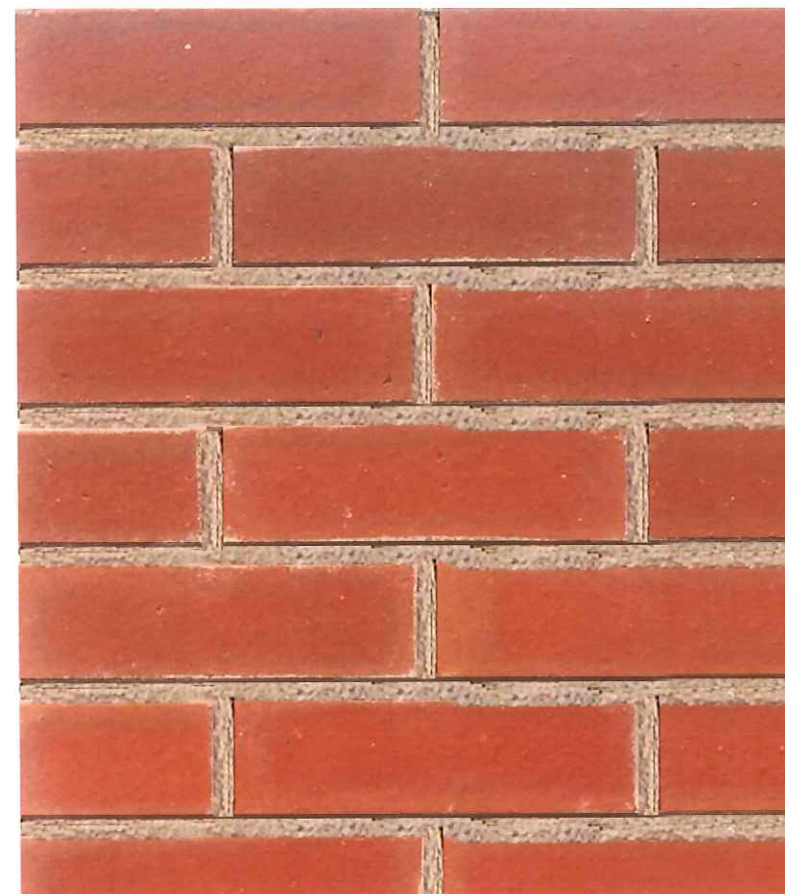
# EXISTING BRICK DETAIL



# MATERIAL SAMPLE



EXISTING BRICK

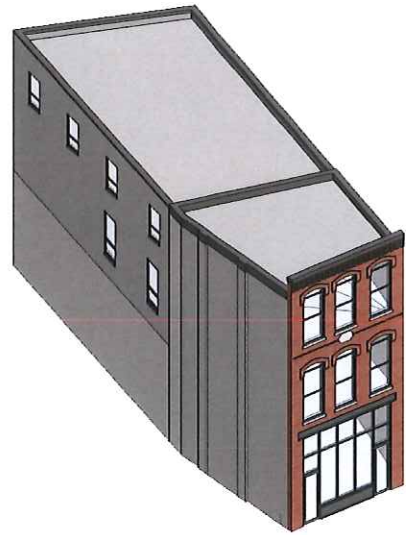


BRICK SAMPLE TO MATCH

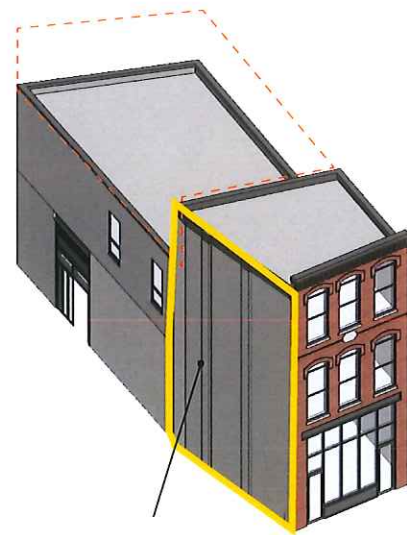
# APPROVED DESIGN

KEEP THE EXISTING STRUCTURE WITH REINFORCEMENT

EXISTING



PROPOSED (WITH PARTIAL DEMOLITION)



NO NEW WINDOW OPENINGS THIS ZONE

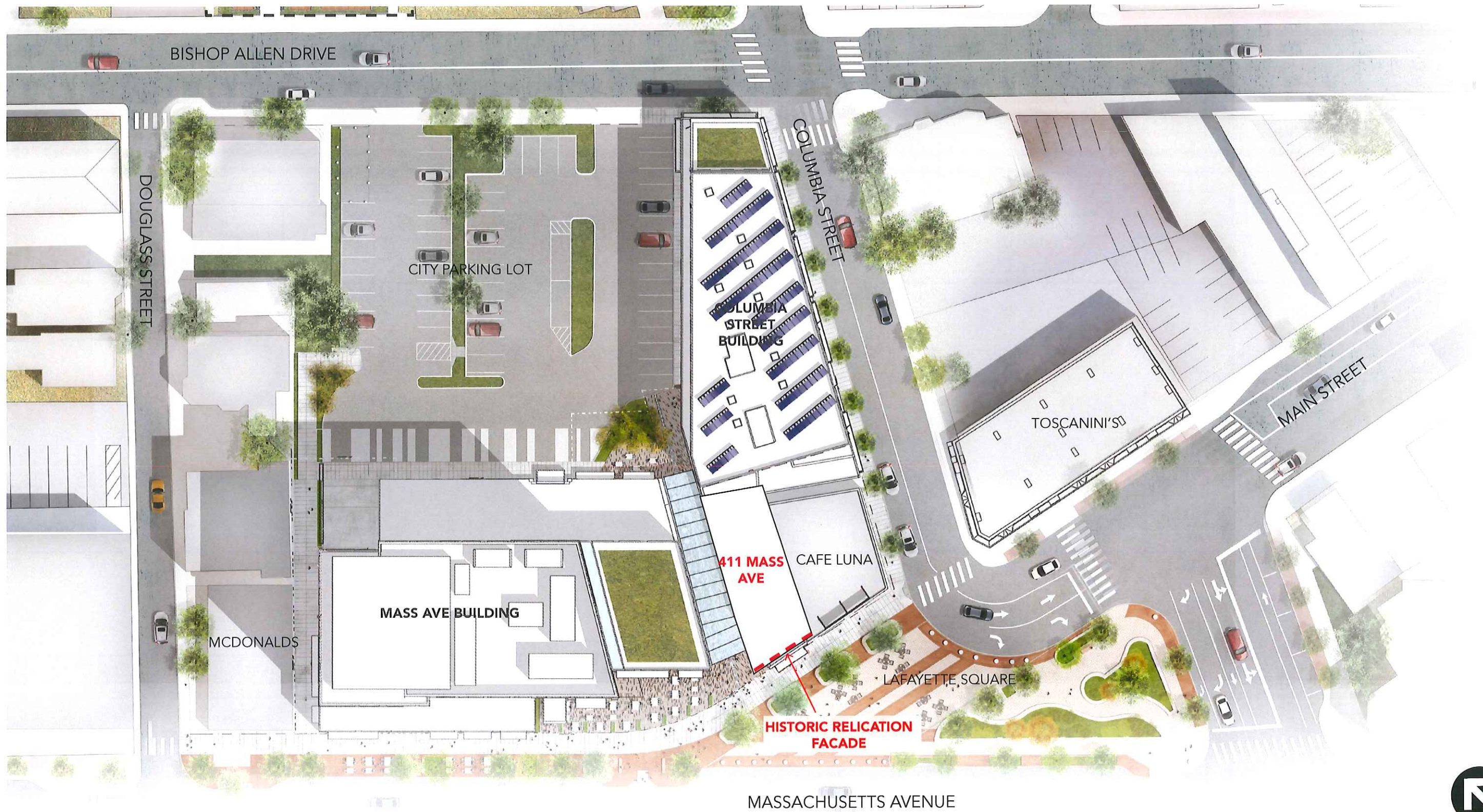
KEEP EXISTING WINDOWS



NO NEW WINDOW OPENINGS THIS ZONE

KEEP EXISTING STORE FRONT





VIEW OF APPROVED DESIGN LOOKING EAST



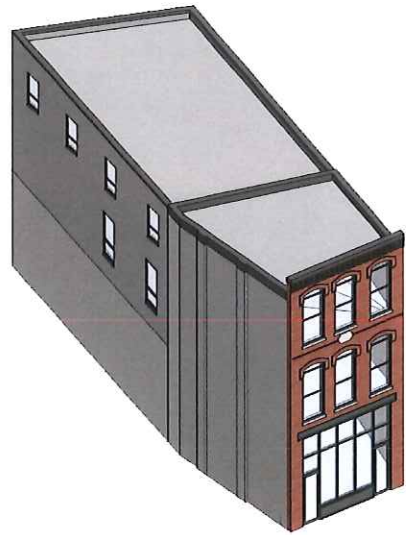
VIEW OF APPROVED DESIGN LOOKING WEST



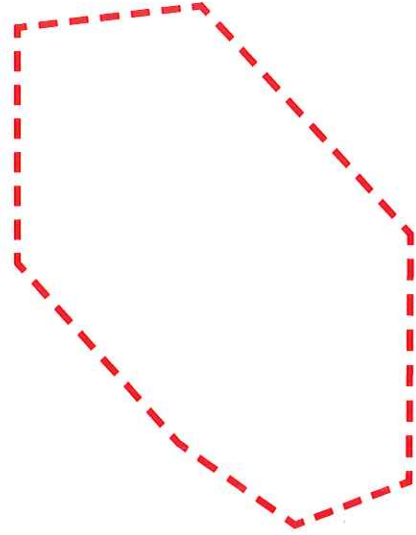
# PROPOSED DESIGN

NEW CONSTRUCTION WITH REPLICATION OF THE HISTORIC FACADE

EXISTING



DEMOLITION



PROPOSED



REPLICATION OF THE HISTORIC FACADE

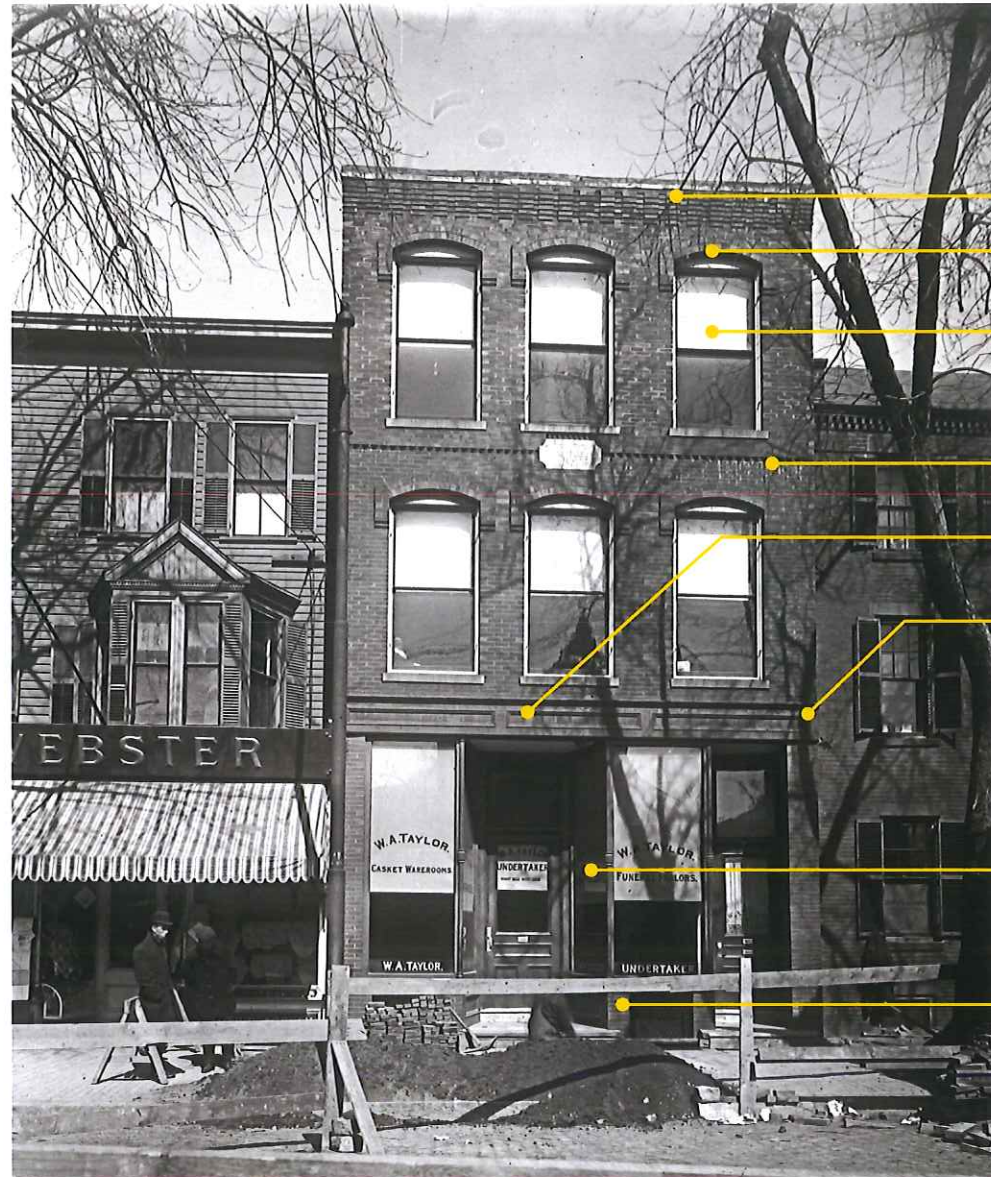


HISTORIC FACADE

APOLLO BUILDING FACADE, EARLY 20TH



PROPOSED DESIGN

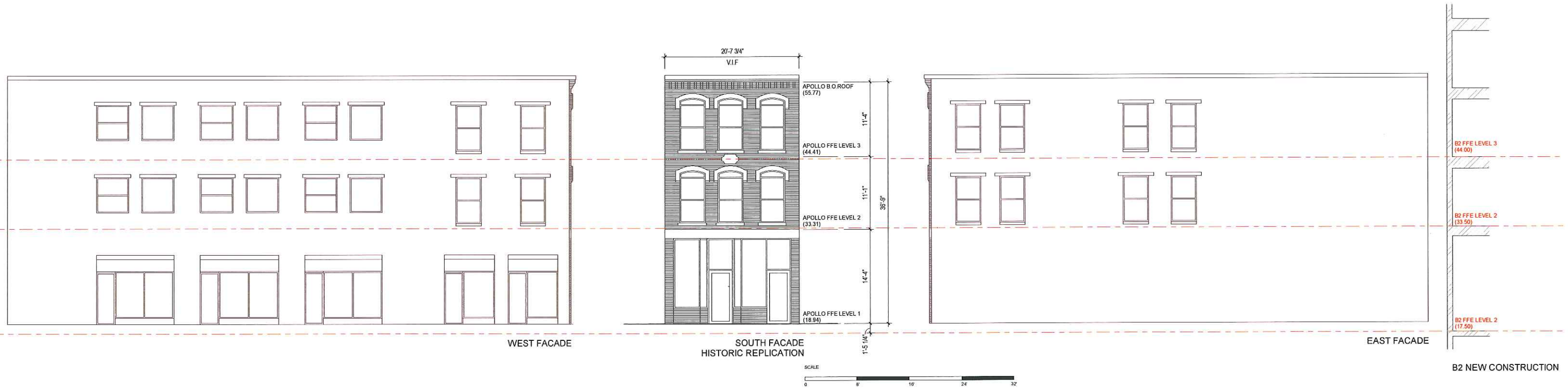


HISTORIC APOLLO BUILDING FACADE, 1910

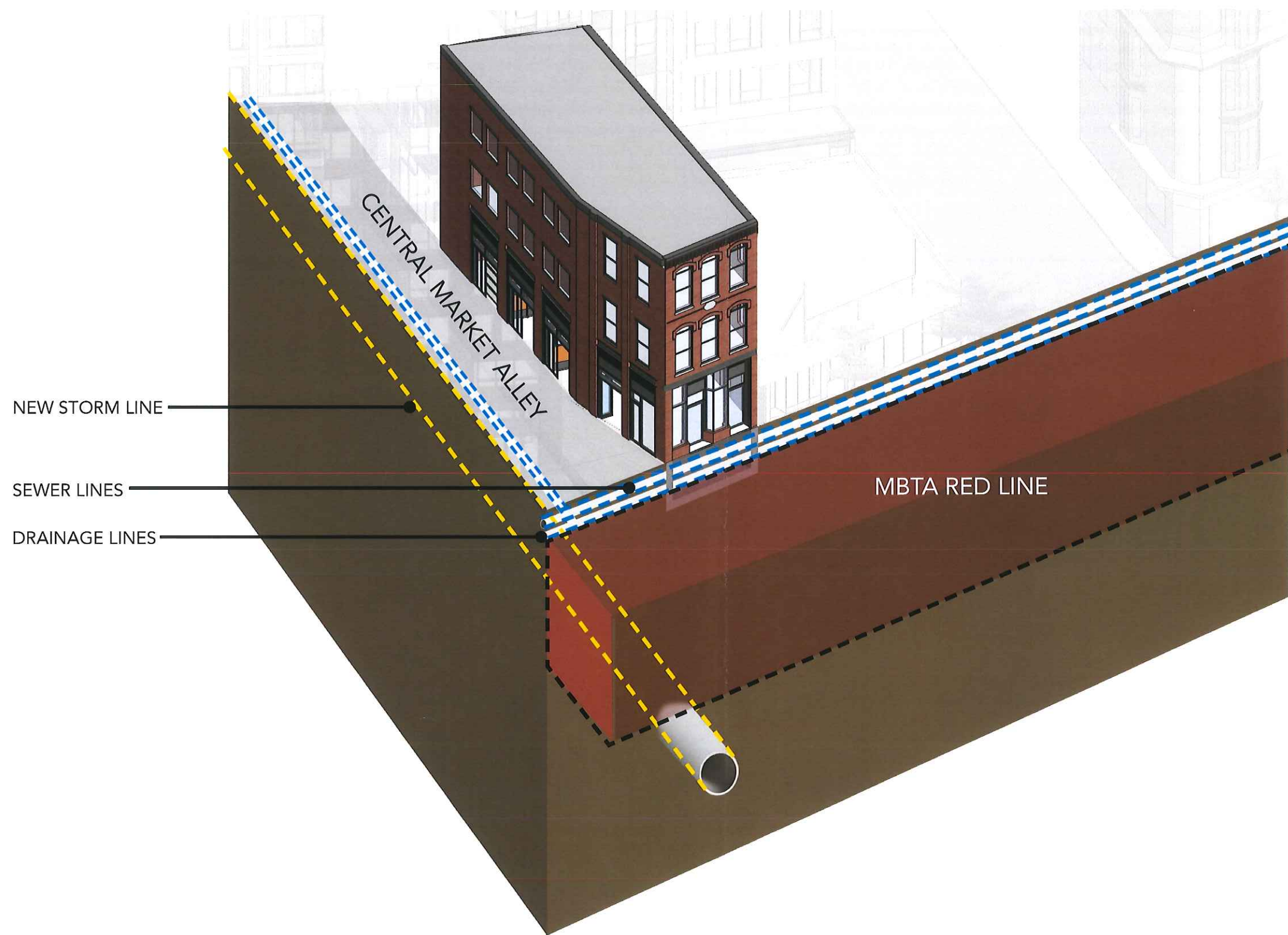
- CORBELLED CORNICE
- WINDOW HOOD
- REPLICATE ORIGINAL WINDOWS
- ORNAMENT & COURSING
- LINTEL
- CORNER DETAIL
- SLANTED BAY
- ARCHITECTURAL BASE



# BUILDING ELEVATIONS (PROPOSED AND EXISTING)



INFRASTRUCTURE





VIEW OF PROPOSED DESIGN LOOKING EAST



VIEW OF PROPOSED DESIGN LOOKING WEST

