



CONSULTANT:

DEVELOPER:

CAMBRIDGE DEVELOPMENT, LLC

SEAL:

REVISIONS:

DRAWING BY: JW

DATE: 7/12/17

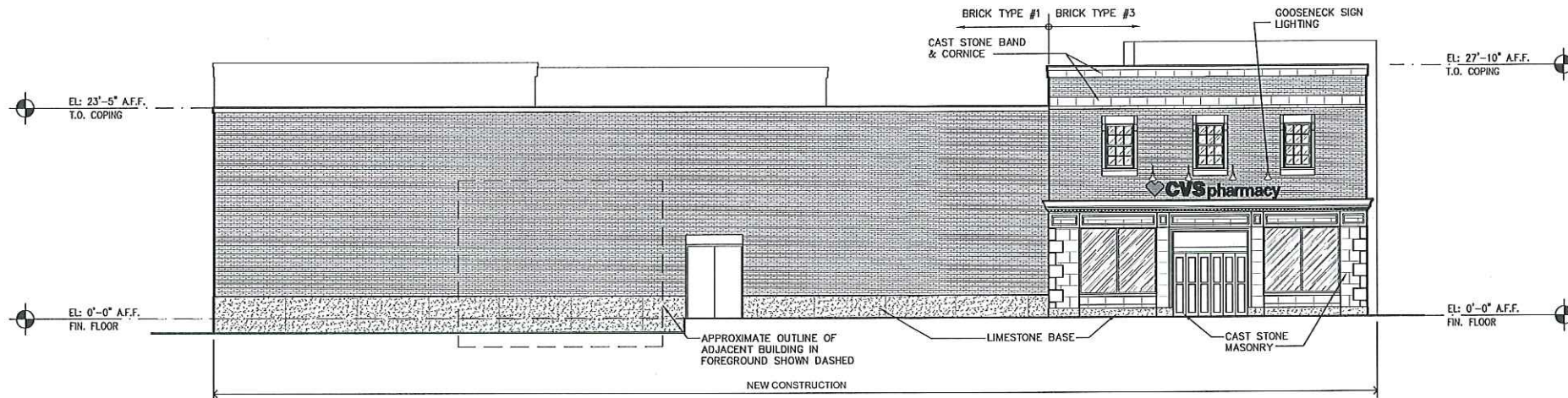
JOB NUMBER: 215238

TITLE:  
EXTERIOR ELEVATIONS

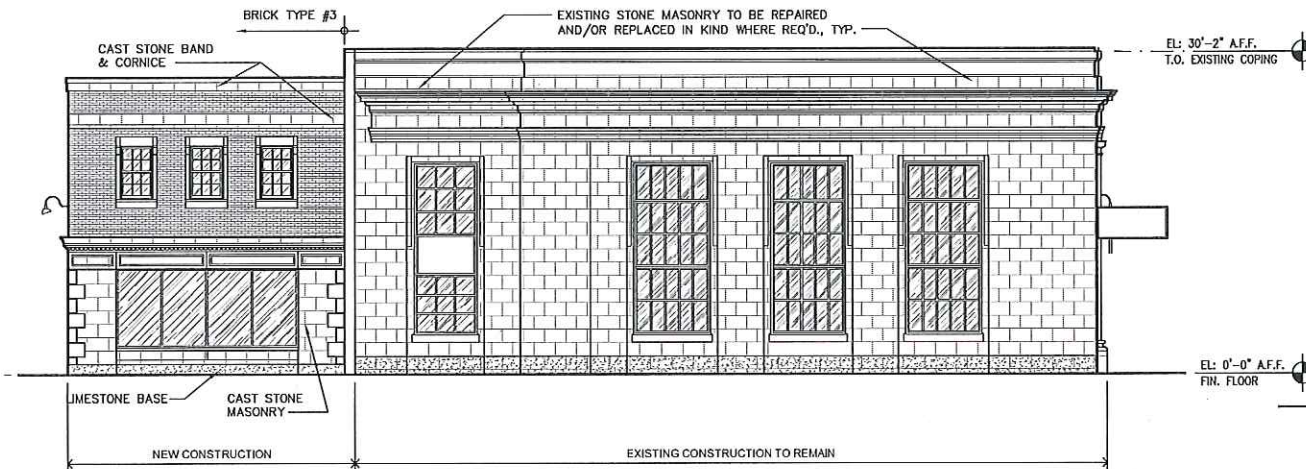
SHEET NUMBER:

A-4.1

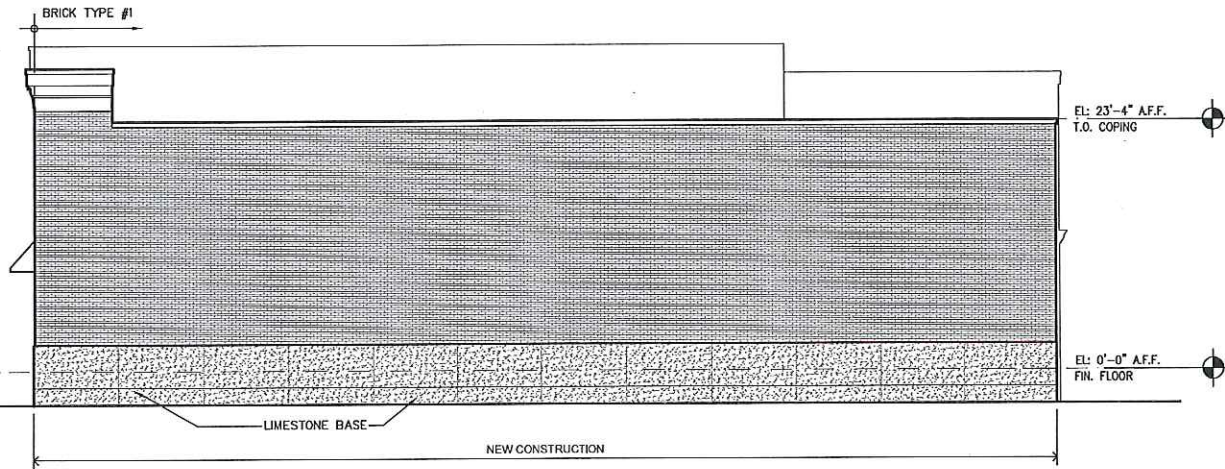
COMMENTS:



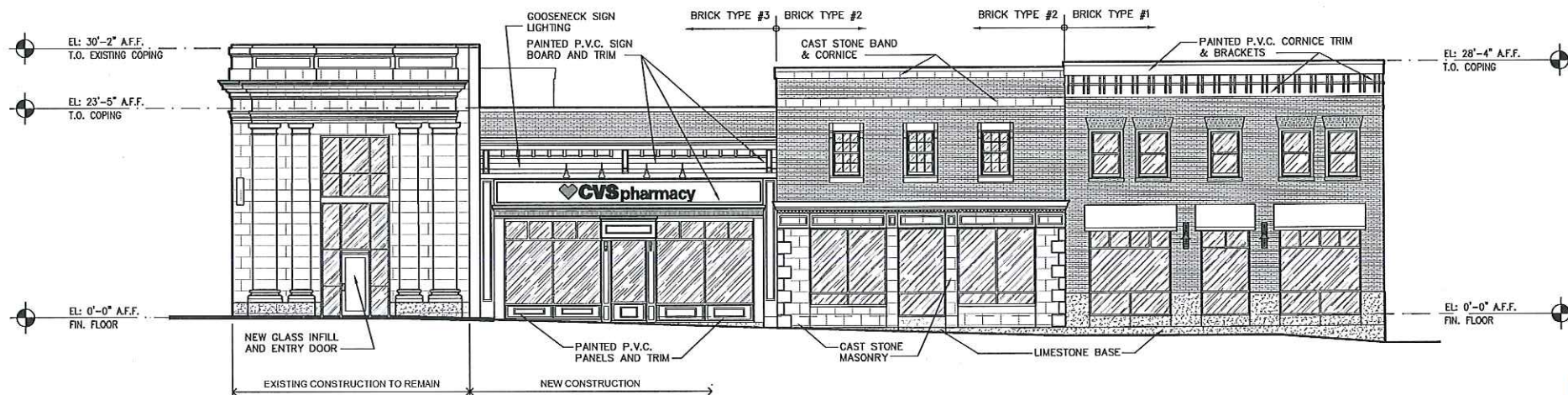
1 NORTH ELEVATION  
A-4.1 SCALE: 1/8" = 1'-0"



2 WEST ELEVATION (THIRD STREET)  
A-4.1 SCALE: 1/8" = 1'-0"



3 EAST ELEVATION  
A-4.1 SCALE: 1/8" = 1'-0"



4 SOUTH ELEVATION (CAMBRIDGE STREET)  
A-4.1 SCALE: 1/8" = 1'-0"

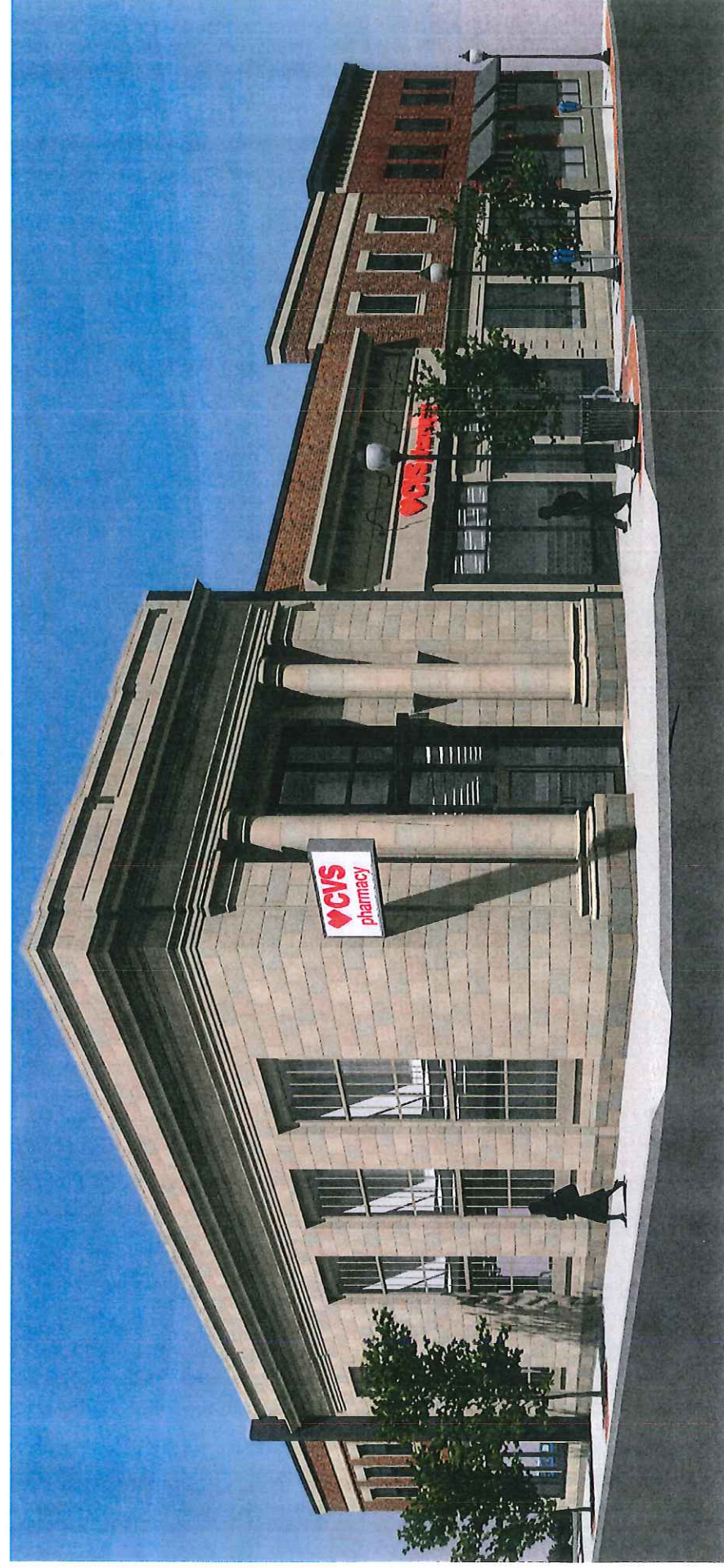
RECEIVED

JUL 28 2017

RECEIVED

JUL 10 2017

CAMBRIDGE HISTORICAL COMMISSION



PERSPECTIVE VIEW

CVS pharmacy  
Cambridge, MA

CAMBRIDGE DEVELOPMENT LLC

Rendered Perspective  
Drawn by: KLP

BKA # 215238

Date: 06/29/2017

R-2

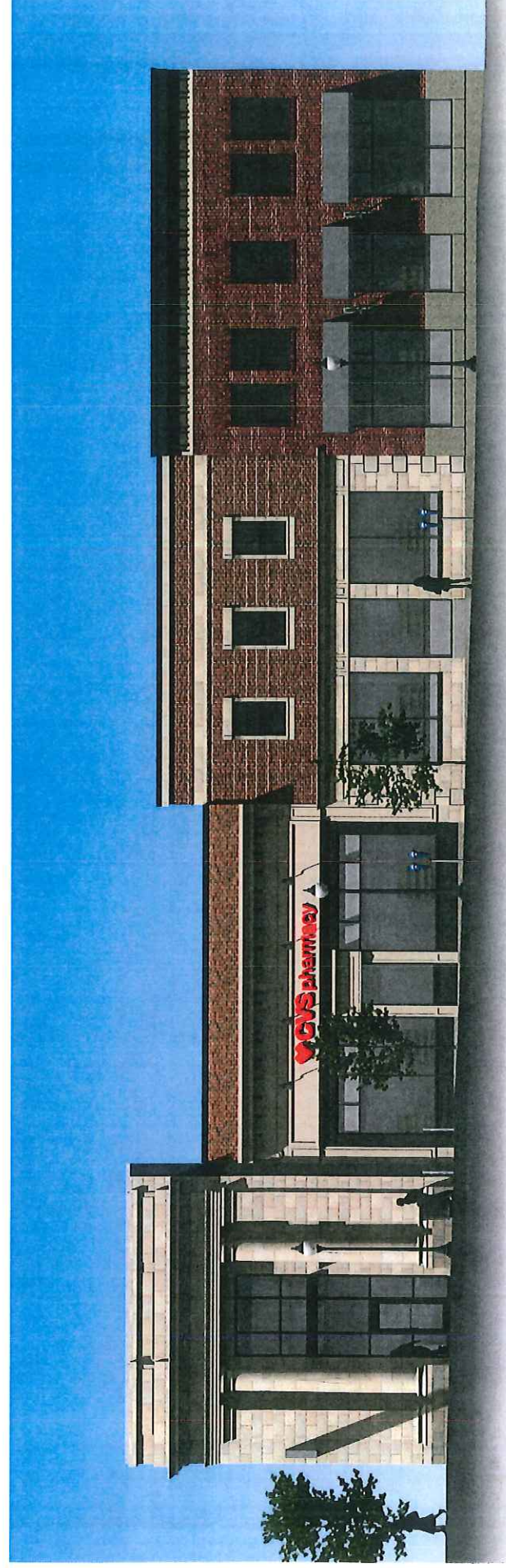
BKA / ARCHITECTS

Boston + Brockton  
142 Crescent Street  
Brockton, MA 02302  
508.593.5603  
bkaarchitects.com

RECEIVED

JUL 10 2017

CAMBRIDGE HISTORICAL COMMISSION



CAMBRIDGE ST. ELEVATION

CVS pharmacy  
Cambridge, MA

CAMBRIDGE DEVELOPMENT LLC

Rendered Elevations  
Drawn by: KLP

BKA # 215238

Date: 06/29/2017

R-1

BKA / ARCHITECTS

Boston + Brockton  
142 Crescent Street  
Brockton, MA 02302  
508.593.5603  
bkaarchitects.com