

# Cambridge Historical Commission

September 8, 2016

## Public Hearing: Alterations to Designated Property

### **Case 3444 (Amendment): 14 Craigie St., by Carol S. Green**

Review modified plans for new construction  
at rear of property to include a detached conservatory.



Key Place

Craigie Street











## Public Hearing: Alterations to Designated Property

### **Case 3675: 43 Reservoir St., by Daniel Sterner & Elizabeth Clark Libert**

Exterior renovations and repairs including replacement of select windows, removal of trellis, and installation of shutters.





Reservoir Street

















## Public Hearing: Alterations to Designated Properties

### **Case 3676: 2 Highland St, by Amy Woods.**

Replace select windows; replace clapboards and trim;  
alter design details at gable and rear entry porch  
to match existing elsewhere on house.

.





Highland Street

Sparks Street





HIGHLAND ST







NEW ZONE  
NO PARKING  
PARKING PERMIT ONLY  
←→











## Public Hearing: Alterations to Designated Properties

**Case 3677: Harvard Yard, by President & Fellows of Harvard College.**

Install wireless access points and antennas to enable service in Yard.





















HOWARTH  
HALL  
BUILT BY THE HOWARTH  
FAMILY IN 1810  
AND REBUILT IN 1850  
BY THE HOWARTH  
FAMILY  
THE HOWARTH  
FAMILY  
LIVED IN THIS  
BUILDING FROM  
1810 TO 1850  
AND FROM 1850  
TO 1880  
THE HOWARTH  
FAMILY  
LIVED IN THIS  
BUILDING FROM  
1880 TO 1890  
AND FROM 1890  
TO 1900



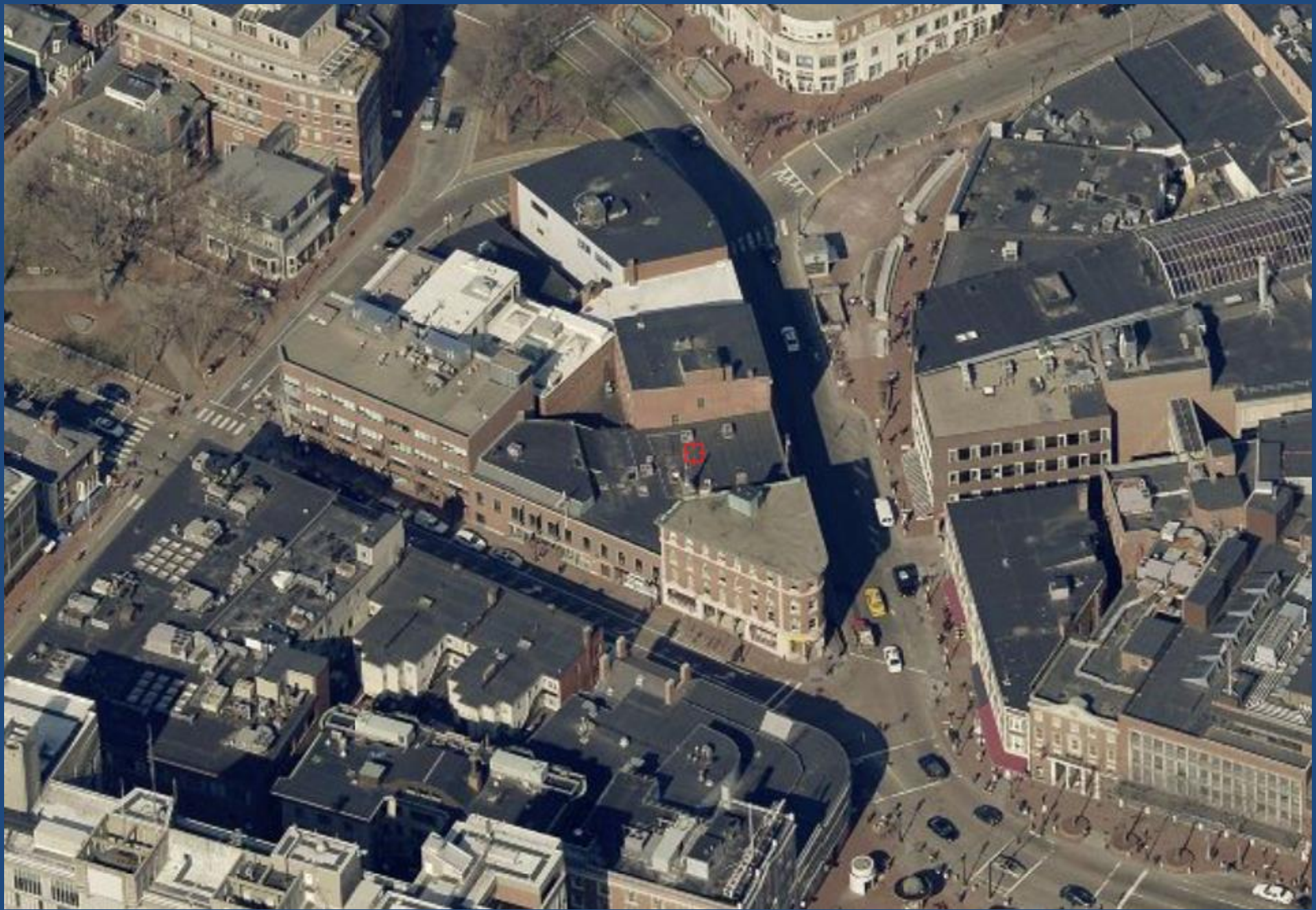
## Public Hearing: Alterations to Designated Properties

**Case 3678: 1-7 & 9-11 JFK St. and 18-20 Brattle St.,  
by Harvard Collection LLC c/o James J. Rafferty, Esq.**

Renovate buildings, alter storefronts,  
and construct upper story additions.

.

































LOWRY  
OPTICIAN

A. R. HENDERSON CO.  
REAL ESTATE  
INSURANCE  
DALLINGER & STEARNS  
LAW OFFICE

GEO. L. DONO  
REAL ESTATE  
INSURANCE

CAMBRIDGE  
POST OFFICE

BOSTON POSTAL DIST.

CAUSTIC  
CLAFLIN  
COMPANY  
PRINTERS.

BROAD STREET

A. J. ...  
...  
...

CHALICE ...

FILMS  
DEVELOPING





VISION HOUSE

VISION HOUSE

VISION HOUSE

WORLD'S ONLY Curious George STORE

BOOKS TOYS



DO NOT ENTER

COOP





















SWEET  
*harvard square*

TEALUXE

URBAN  
OUTFITTERS

URBAN OUTFITTERS

TESS







URBAN  
OUTFITTERS

SWEET

TEALUNA

URBAN OUTFITTERS

5:00 LIVE CAMBRIDGE  
5:17 F&A - 6:00 FREE SHOW  
MUSIC BY SHURA 7PM  
6:15 INVITATION ONLY EVENT  
OUTDOORCAMERS GOODS MARKET  
LEAVE 6:30PM 7:30PM

TESS

ESTABLISHED  
1910







URBAN OUTFITTERS

TESS

DICK'S  
HARDWARE

STORAGE BINS

SOLDIER

Josh





PRINTERS

T.J. DALY  
STUDENTS BOOKS  
GAS - ELECTRIC

BOOK BINDERY

TEAS M'KEE'S COFFEES  
AUCTION SALE  
Antique Furniture and Reproductions  
OCT. 12-13-14  
10 A.M. to 5 P.M.

34 T.J. DALY 34

JOHN EGAN

BINET MAKERS

WALDO WING  
CABINET MAKERS  
UPHOLSTERS

ELECTRICIAN - GAS FITTER  
CONSUMERS COAL CO.

ALL GIRLS BALL OF WOMEN  
BOSTON  
KUBBERS



















## Public Hearing: Landmark Designation Proceedings

### **Case L-120: 851 & 855 Cambridge St.**

Consider petition requesting initiation of a landmark designation study for the Sunset Café building per Ch. 2.78, Article III of the Cambridge Municipal Code.





DO NOT  
ENTER

Sunset Cafe

DO NOT  
ENTER

Sunset Cafe

Sunset Cafe



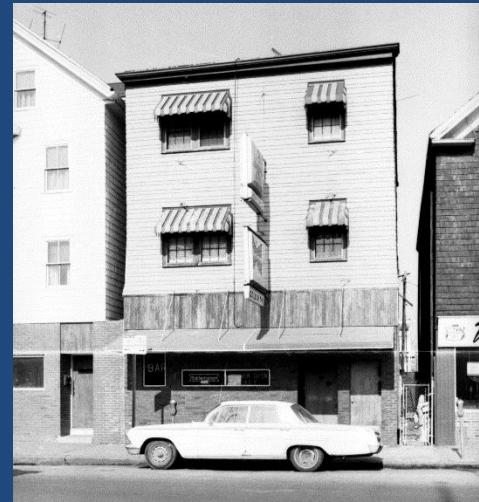




Hunting Street

Cambridge Street













Atwood's

Toomey

Toomey

American flag

A three-story building with a dark brown shingled facade and black window frames. An American flag is mounted on a black pole to the left. Two signs with the name 'Toomey' are visible above the ground-floor windows. The ground floor has a dark entrance with the name 'Atwood's' above it.

A two-story building with white horizontal siding and black window frames. A red awning covers the ground-floor entrance.

A three-story brick building with a prominent cornice and dark window frames.

Sun Cafe

Toomey Hill Cafe

A multi-story brick building with a red roof and a large ground-floor window. Signs for 'Sun Cafe' and 'Toomey Hill Cafe' are visible. A street sign for 'Hunting' is also present.

Street scene with traffic lights, cars, and a person walking on the sidewalk.

A street scene showing a traffic light, several cars, and a person walking on the sidewalk. The street is paved with asphalt and has white and yellow markings. A red brick sidewalk is visible on the right side.



Public Hearing: Landmark Designation Proceedings

**Case D-1384 & D-1385: 207 & 227 Cambridge St.,  
by Mark Lechmere LLC.**

Consider request to extend the demolition delay period  
at the request of the owner.

Consider whether to initiate a landmark designation study  
of the preferably preserved buildings.  
per Ch. 2.78, Article III of the Cambridge Municipal Code.



Public Hearing: Demolition Review

**Case D-1410: 54-56 Reed St., by James Renzi, current owner  
o/b/o Joseph Glenmullen, buyer.**

Demolish house (1875).









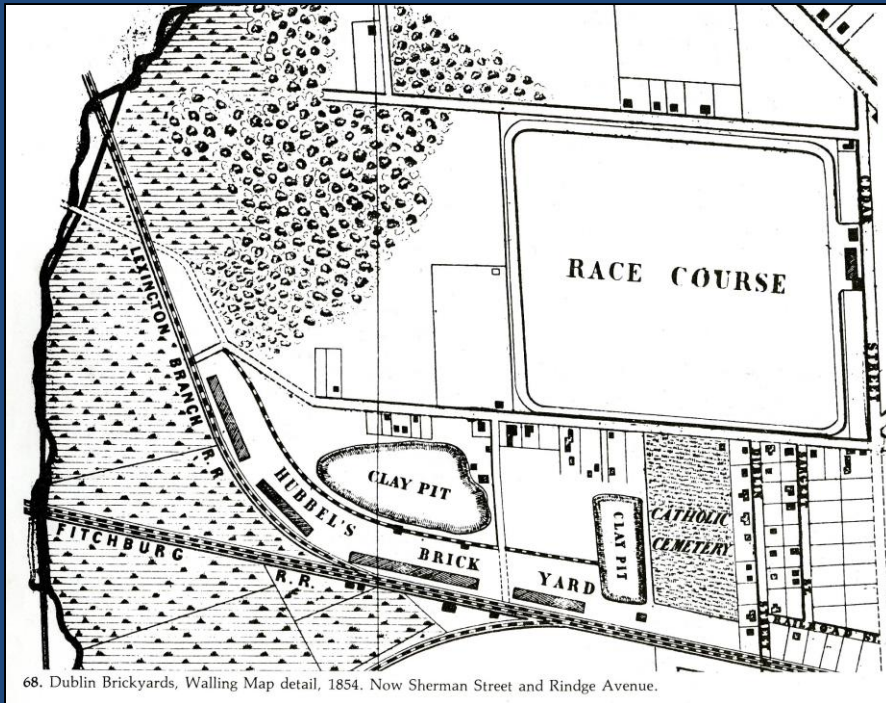
Reed Street Court

Reed Street

20 ft  
10 m

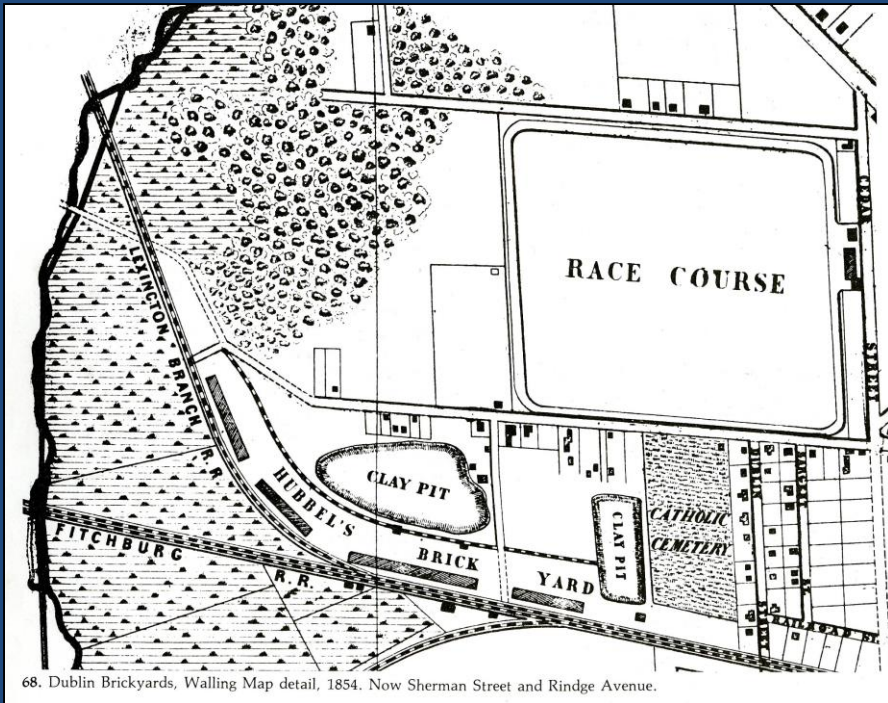
ometry



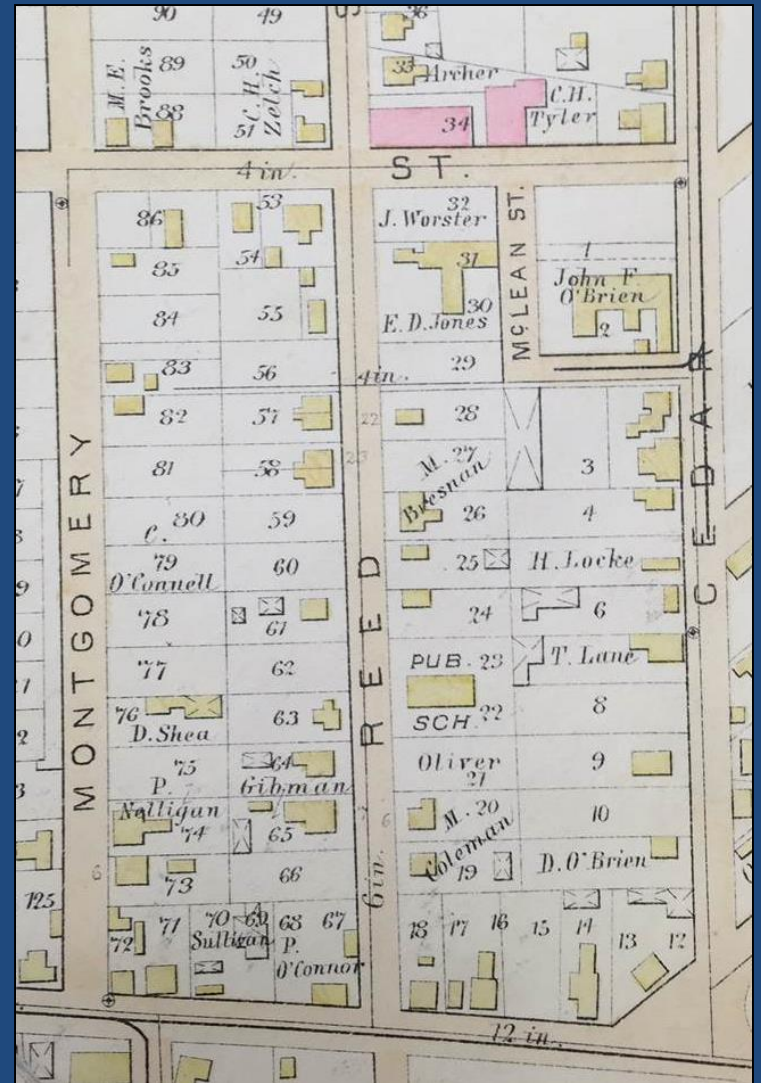


68. Dublin Brickyards, Walling Map detail, 1854. Now Sherman Street and Rindge Avenue.





68. Dublin Brickyards, Walling Map detail, 1854. Now Sherman Street and Rindge Avenue.











PARKING BY PERMIT ONLY

TOW AWAY ZONE NO PARKING STREET CLEARING 6:00 AM - 2:00 PM MONDAY - THURSDAY EACH MONTH PERMIT TO SEC. 97 (except holidays)



