

Harvard Square Conservation District

Storefront Guidelines





TESS

OUTFITTERS

HARVARD
SQUARE
BUSINESS
SCHOOL

500
TESS

Storefront Principles

- Most storefronts will be regarded as impermanent and the Historical Commission will look favorably on creative alterations that meet the particular needs of the retailer or office tenant, as long as the original structure and finishes are maintained or recovered (where they still exist).
- Alterations to upper stories will be regarded as having the potential for significant and permanent adverse effects and will be reviewed accordingly.
- Reversible changes to storefronts will not be discouraged as long as they do not obscure or damage the structure or any original architectural features.
- Opaque glass will not be allowed in display windows unless specifically permitted.

A Certificate of Nonapplicability will be issued by the staff for:

- Alterations that do not alter, enclose, or extend further than the decorative or structural framework of the building or retail space originally intended to surround a storefront.

The framework consists of such elements as piers, columns, cornerboards, quoins, cornices and similar structural or decorative features.

- Storefront alterations that do not obscure, remove, relocate, or replace historic or original exterior architectural features.

Exterior architectural features may include, but are not limited to, such features as brackets, window and door casings, fascia, hoods, bays, and window sash.

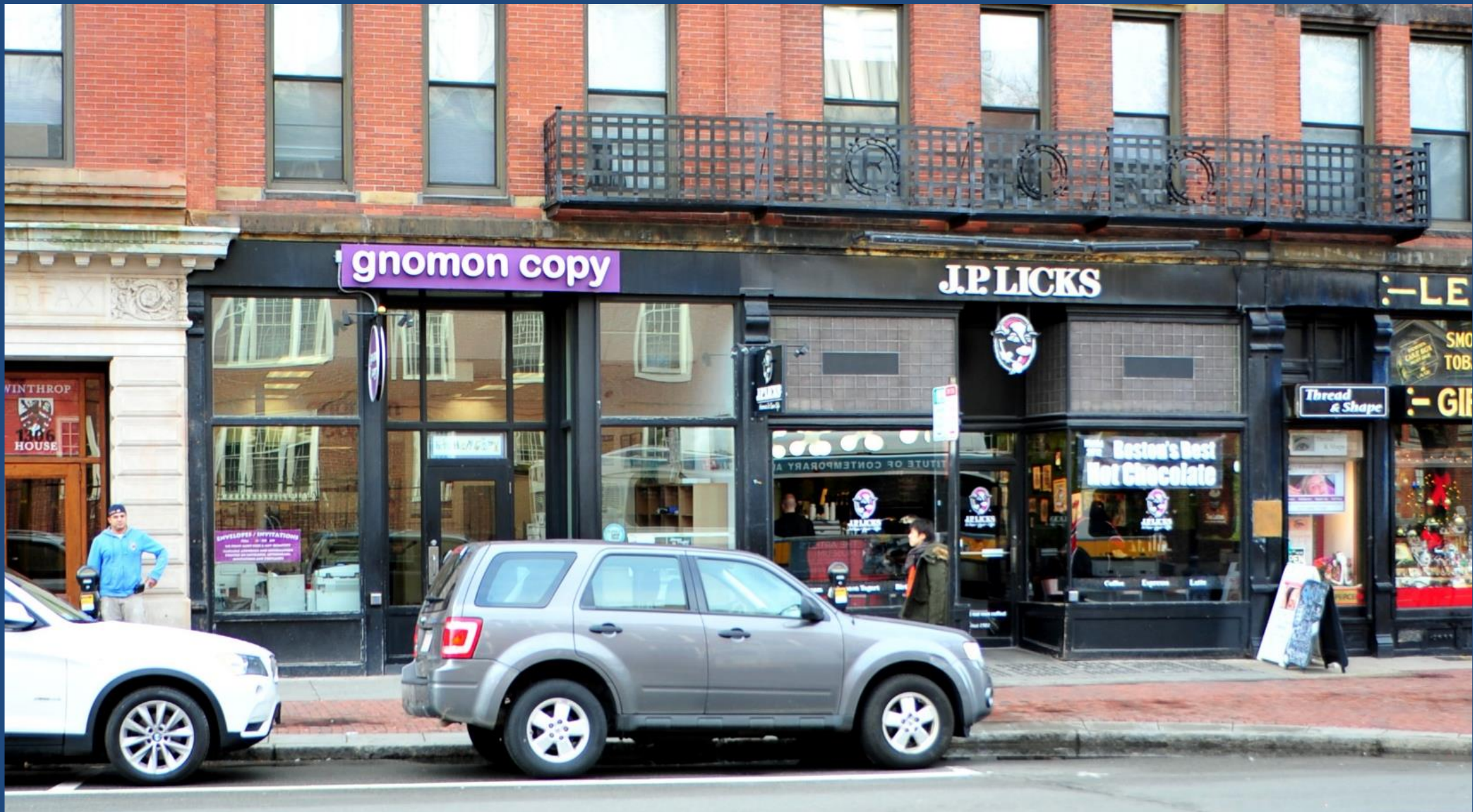




BEFORE



AFTER



gnomon copy

J.P. LICKS

Thread & Shape

WINTHROP HOUSE

SMO TOB
- LE
- GI

Boston's Best Hot Chocolate

ENVELOPES / INVITATIONS





Discount
records
COLUMBIA
RECORDS

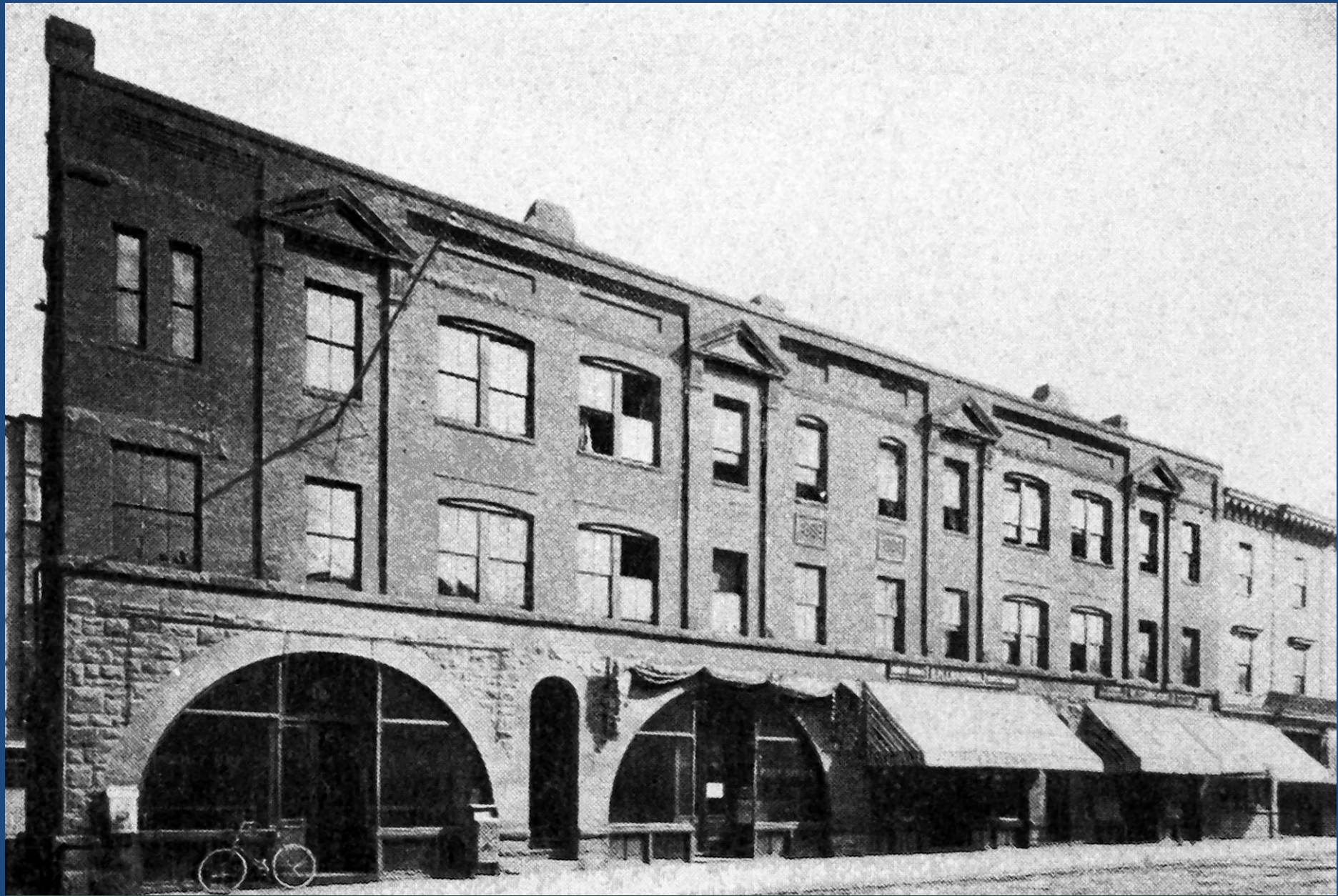
Barnes

THE
HOT SHOP

CAMEL'S
HUMP

MINUTE
MAN
RADIO
Service
STEREO
COMPONENTS
RECORDS

30
WAUG
BUILDING















1324

ART

Justin Kelly

Bridge View Company





1524

ARVARD

ALBANY

ALBANY

ALBANY

ALBANY

ALBANY

TECHNOLOGY

NOT RESPONDING TO PERIS U.S. POLICE LOST - MISLAID

HHHH HHHH

TECHNOLOGY



NO PARKING
IN FRONT
OF THIS AREA



Protected Storefronts

- 1304 Massachusetts Avenue (Felix Shoe Repair)
- 1316 Massachusetts Avenue (Leavitt & Pierce)
- 1320-22 Massachusetts Avenue (J. August)
- 30-30A Plympton Street (Blue Bottle Coffee)





LEAVITT & PEIRCE

SMOKING TOBACCO
GIFTS TOBACCO GAMES

FAMOUS
EHRlich
D.P.E.
MIXTURE

CIGARS

J. LICKS

J. LICKS

Thread & Shape

HELP WANTED

