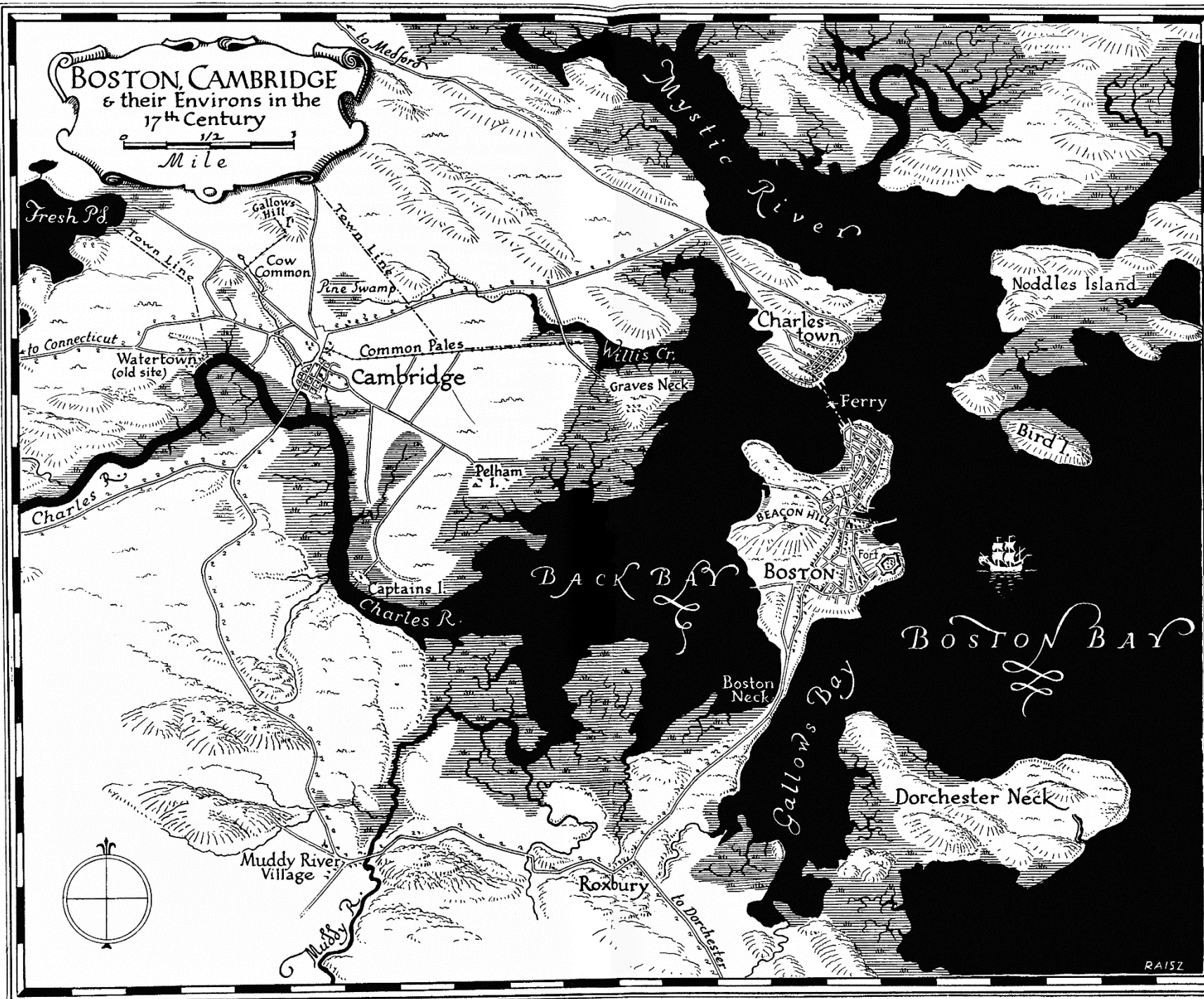


Reservoir Hill

History and Development

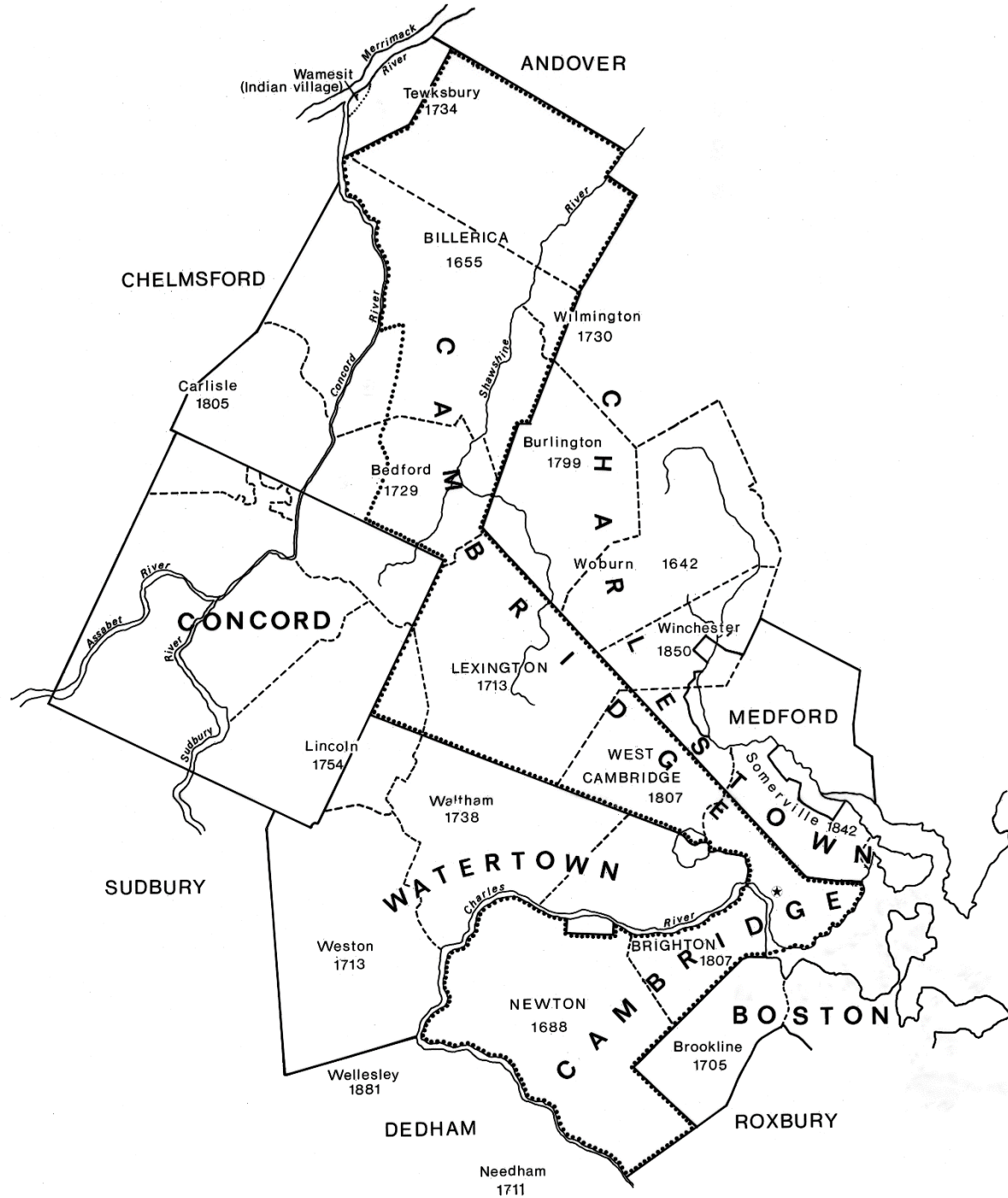
Cambridge Historical Commission

December 10, 2015



Reconstructed plan of Cambridge and environs in the 17th century

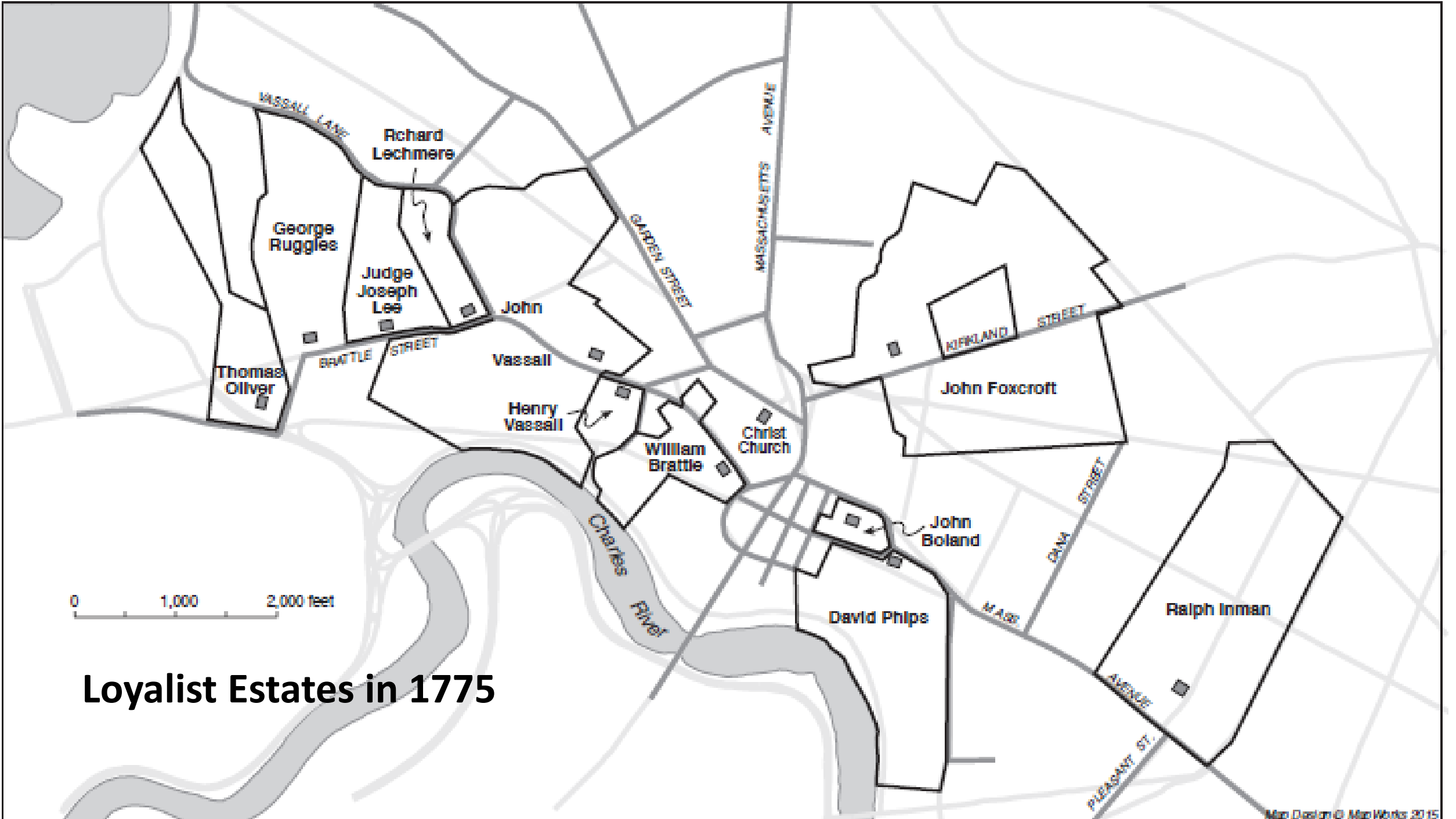
RA15Z



The boundaries of Cambridge at its greatest magnitude, 1642–1655. At this time Sparks Street and Vassall Lane formed the western boundary of present-day Cambridge.

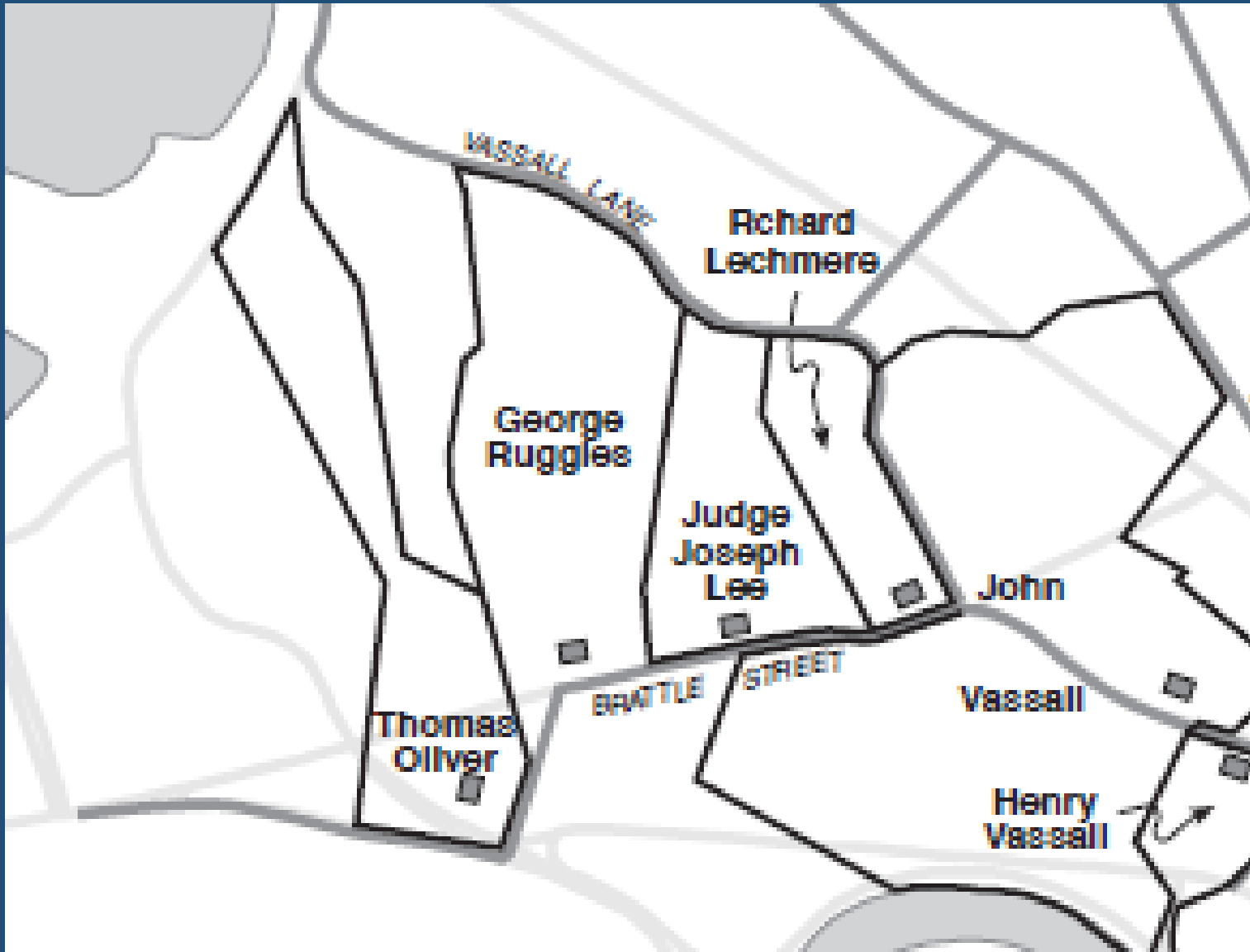


A plan prepared for the legislature in 1754 showing land in Watertown (west of Sparks Street and Vassall Lane, including present Reservoir Hill) and Charlestown whose owners wished to be set off to Cambridge.



0 1,000 2,000 feet

Loyalist Estates in 1775



Loyalist Estates in 1775

The Reservoir Hill Study Area occupies portions of the Lechmere, Lee and Ruggles estates



Tory Row in 1775,
looking east

Lechmere estate
in the foreground



Tory Row
in 1776

PLAN OF CAMBRIDGE

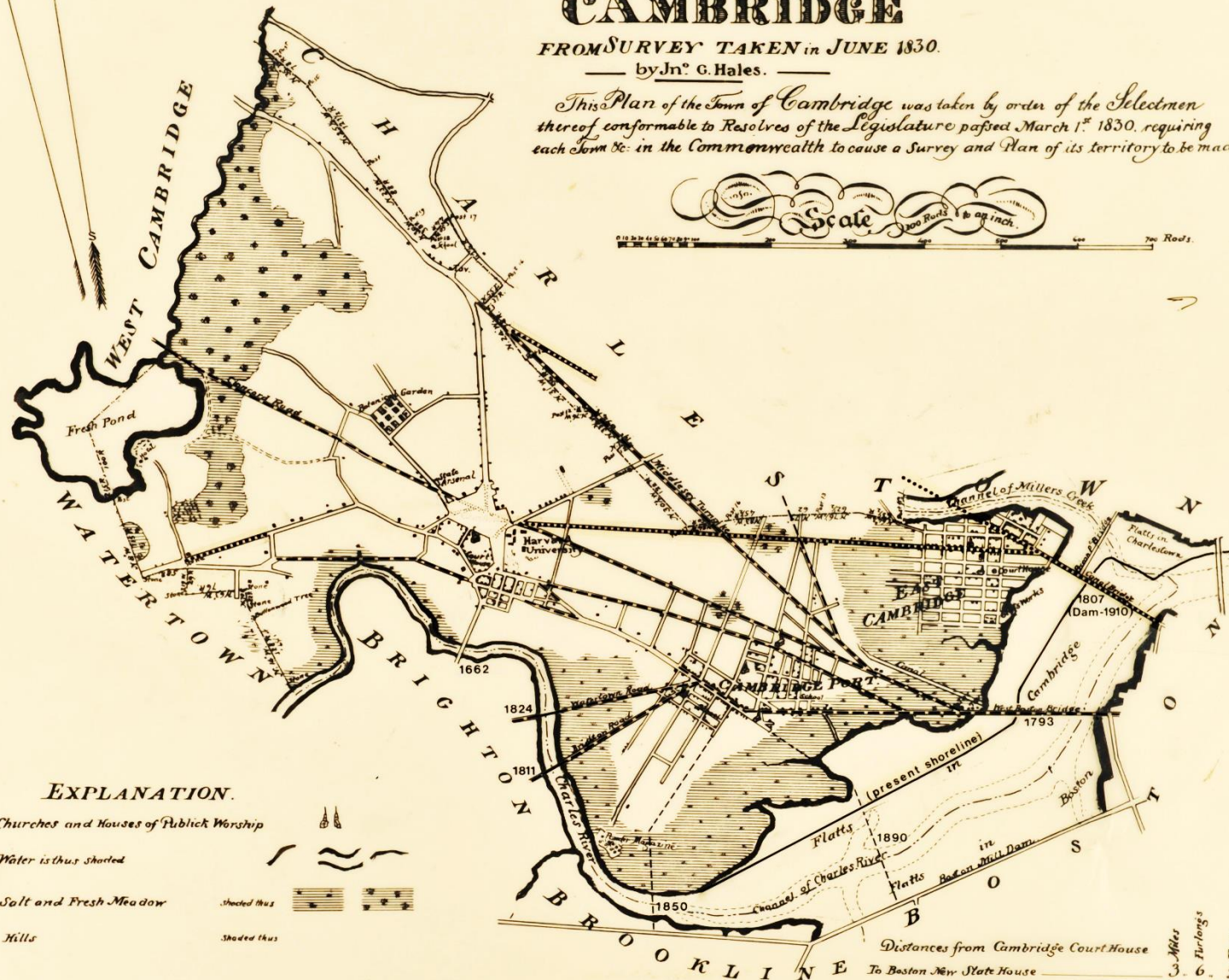
FROM SURVEY TAKEN in JUNE 1830.

— by Jn^o. G. Hales. —

This Plan of the Town of Cambridge was taken by order of the Selectmen thereof conformable to Resolves of the Legislature passed March 1st. 1830, requiring each Town &c. in the Commonwealth to cause a Survey and Plan of its Territory to be made.



100 Rods to an inch.



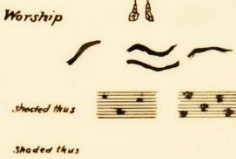
EXPLANATION.

Churches and Houses of Public Worship

Water is thus shaded

Salt and Fresh Meadow

Hills



Distances from Cambridge Court House

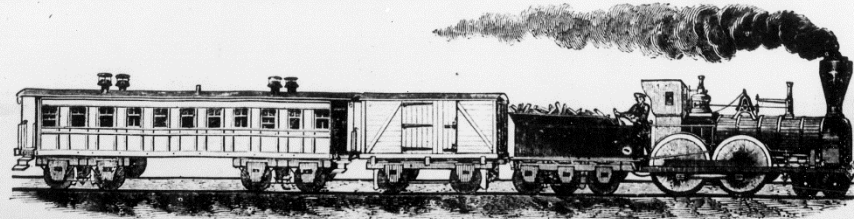
| | Miles | Furlongs | Rods |
|------------------------------|-------|----------|------|
| To Boston New State House | 3 | 6 | 2 |
| " Concord Court House | 13 | 4 | 28 |
| " East Cambridge Court House | 2 | 2 | 20 |

1830

726. 8. 10

HARVARD BRANCH RAILROAD.

FOR CAMBRIDGE COLLEGES.



ON AND AFTER MONDAY, JAN. 5, 1852,

TRAINS WILL RUN AS FOLLOWS:

**LEAVE CAMBRIDGE,
NEAR THE COLLEGES,**

7.30 A. M.
8.30 “
10.15 “
1.40 P. M.
3.30 “
4.25 “
6.30 “
7.10 “

**LEAVE BOSTON,
AT THE FITCHBURG STATION,**

8.00 A. M.
9.30 “
12.45 P. M.
2.15 “
3.50 “
5.30 “
6.50 “
☞ **11.15** “

☞ * Except on Saturdays, when it will leave at 10 P. M.

NEW ARRANGEMENT.

Season Tickets, \$6 per quarter. Package Tickets, ten for a dollar, will convey passengers from and to Cambridge to Dover Street, or to the New South Boston Bridge, by the Dover street Omnibus and the South Boston Omnibus, which leave the Fitchburg Station on the arrival of each train.

Tickets to and from Cambridge to Fitchburg Station at fifty cents for a package of seven. Single Tickets ten cents, for cars only. For sale at the Railroad Stations, and by Charles Stimpson, 105 Washington street, Boston.

Passengers taken to and from the Station in Cambridge to any distance now run by the Cambridge Omnibuses in the First Ward, for three cents. Order slate, at Wood & Hall's and at the Station.

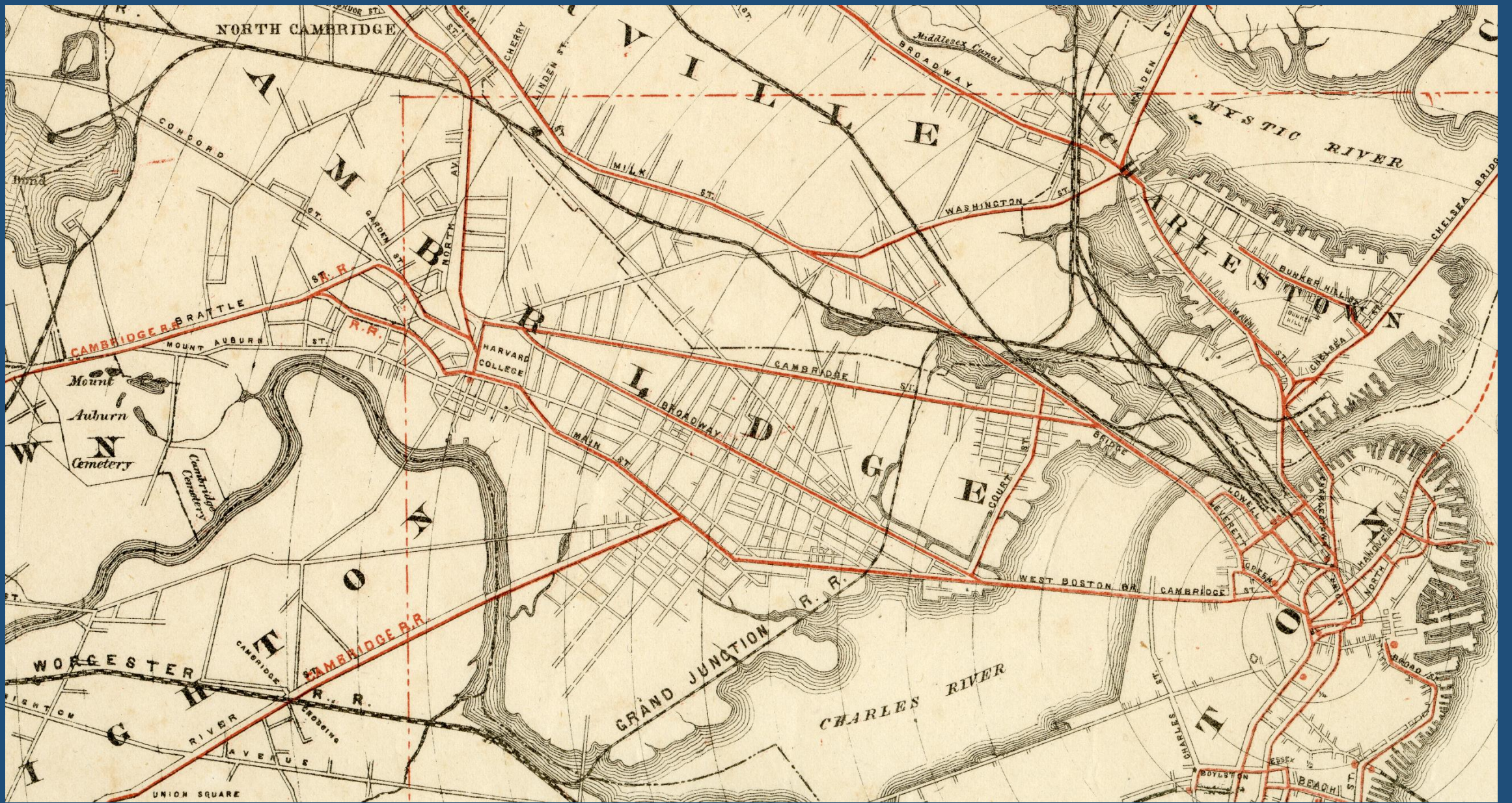
The office in Boston is in the Lowell Ticket Office, Scolley's Buildings, Court street. Passengers called for at this Office.

PRINTED AT THE CAMBRIDGE CHRONICLE OFFICE.

Harvard Branch R.R. ran to a station opposite Cambridge Common from 1849 to 1854



1854



Horsecar routes through Cambridge in 1865



Horsecar traveling eastbound on Brattle Street passes the corner of Riedesel Avenue, ca. 1890.



Reservoir Hill in 1854

The mapmaker placed the reservoir on the wrong side of Reservoir Street, but the map is otherwise accurate.



Lechmere-Sewall-Riedesel house and barn, 149 Brattle Street (1761),
looking west from the corner of Craigie and Sparks streets
toward the Joseph Lee mansion (153 Brattle Street), ca. 1870



Hooper-Lee-Nichols
house, 159 Brattle St.
(ca. 1690).
Photo ca. 1895.

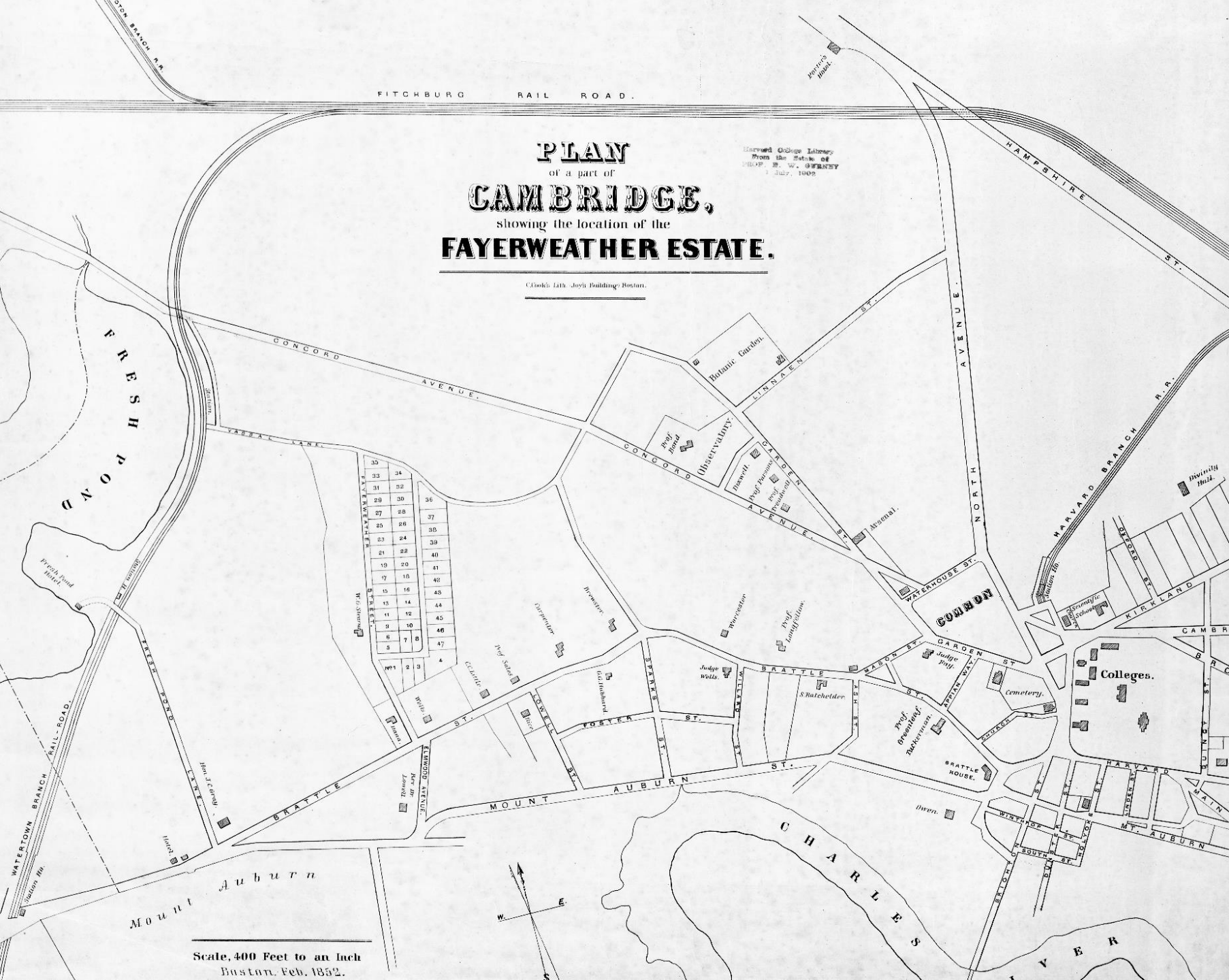


Thomas Fayerweather house, 175 Brattle Street (1764). Painting by unknown artist, before 1854.

PLAN
of a part of
CAMBRIDGE,
showing the location of the
FAYERWEATHER ESTATE.

Harvard College Library
From the Estate of
WILLIAM G. STEARNS
July 7, 1909

Charles 14th. Jos. Building Boston.



Scale, 400 Feet to an Inch
Boston, Feb. 1852.

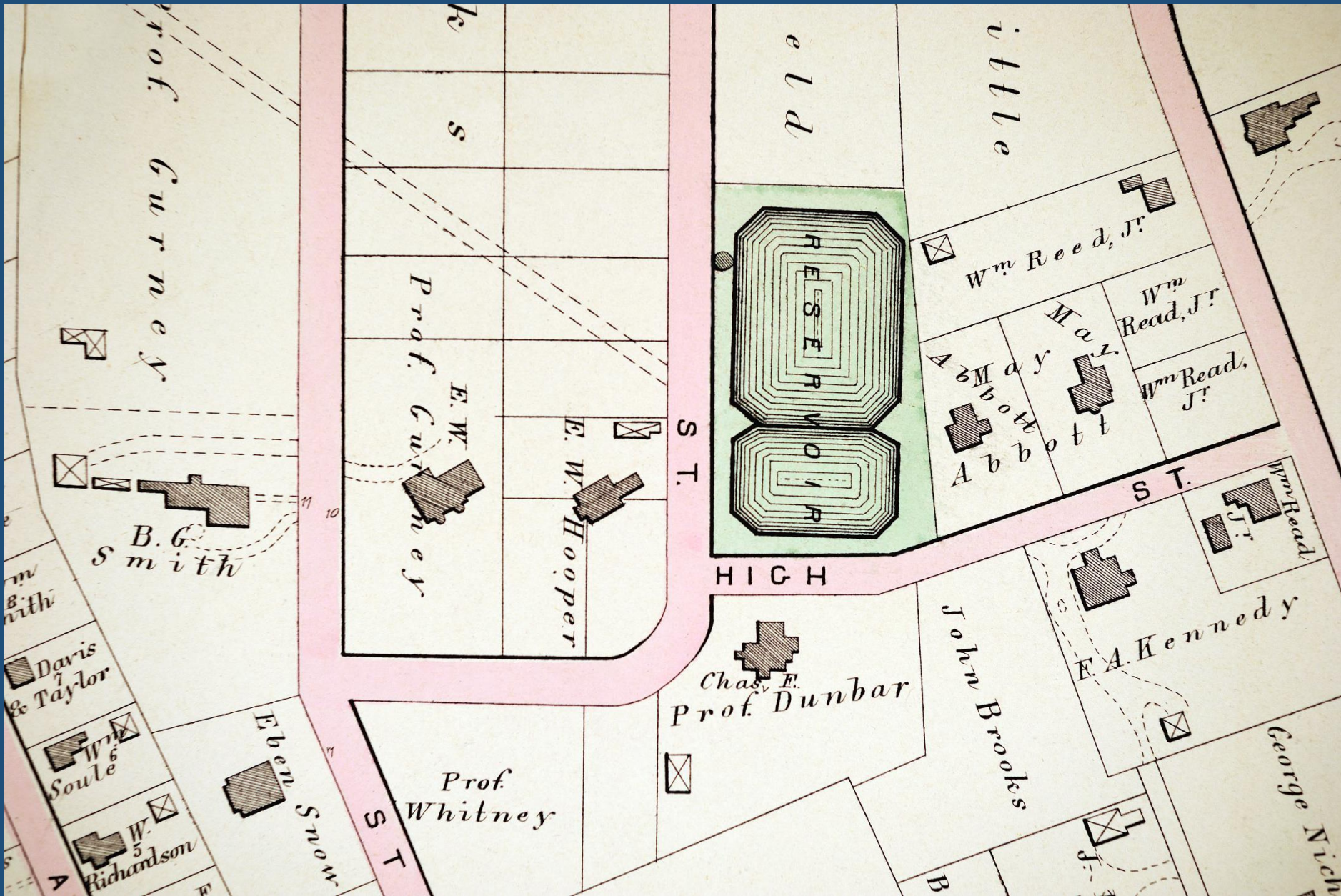
William G. Stearns's
subdivision of the
Fayerweather estate,
1852



William G. Stearns's
subdivision of the
Fayerweather estate,
1852



William G. Stearns house,
45 Fayerweather Street
(1846; demolished 1937)



Reservoir Hill houses in 1873, as originally sited.

The Stearns house is labeled "B.G. Smith"



Cambridge Water Works reservoir and standpipe, ca. 1895. Demolished 1902.



Prof. Charles H. Dunbar
house, 64 Highland Street
(1860; demolished 1963).
Photo 1949



Alvin F. Sortwell house, 61 Highland Street (former reservoir site)
(1902, E.S. Child, architect; demolished 1948). Photo 1903.



William Wainwright house, 61 Highland Street (1958, Geometrics, Inc., architect).
This view shows the foundation of the Alvin Sortwell house, which remained
as a landscape feature after the site was cleared in 2003. Photo ca. 1960.



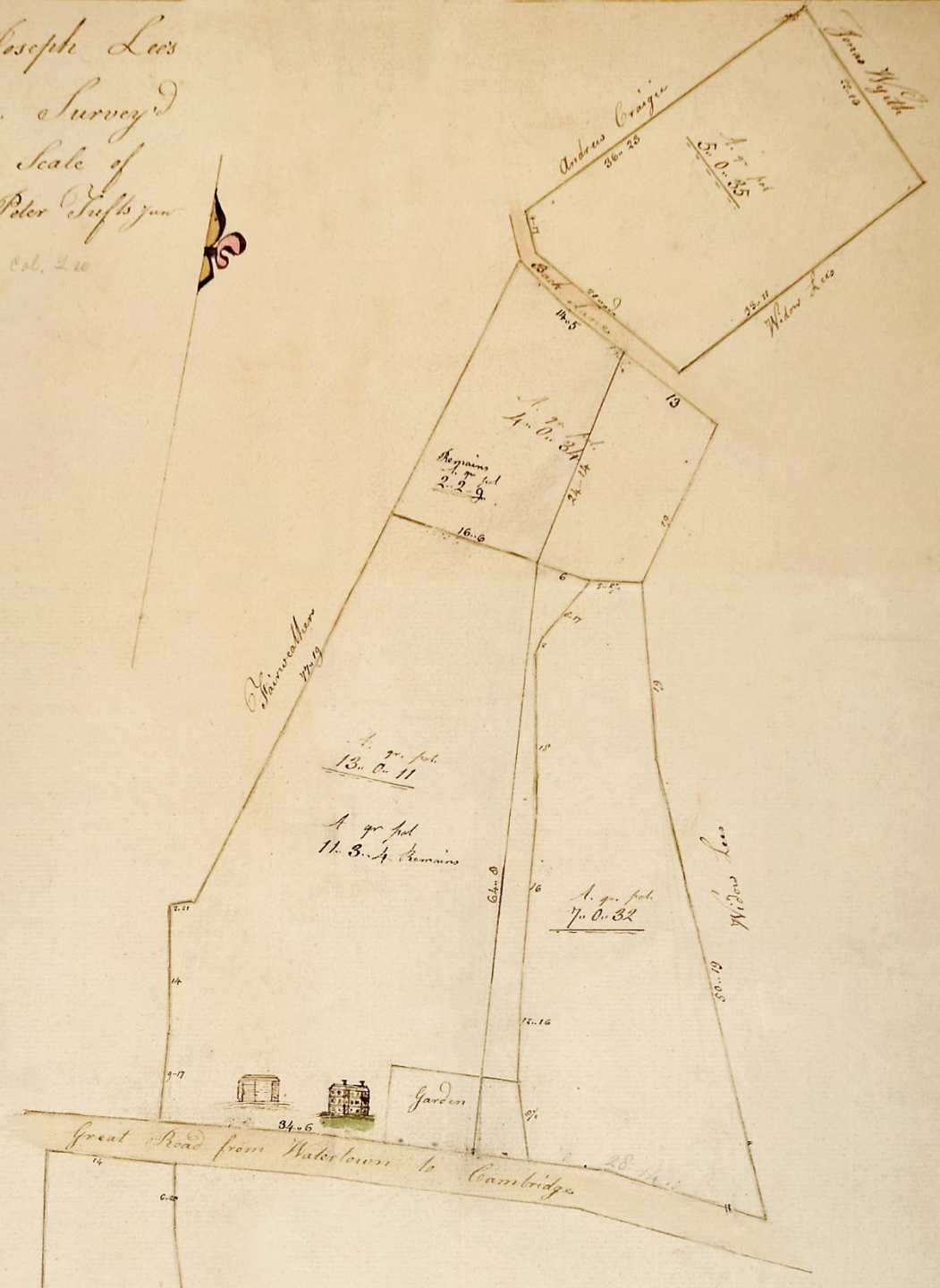
Nathaniel C. Nash house, 48 Fayerweather Street (1902, G.A. Moore, architect; demolished 1964). Photo n.d.



Peter Hiam house,
48 Fayerweather Street
(1968, Geometrics Inc.)
Demolished 2007. Photo
1968-69.

A Plan of Mr Joseph Lees
 Farm in Cambridge, Survey'd
 and Drawn from a Scale of
 10 rods to an inch By Peter Tappan
 January 20th 1803 Col. 210

A. q. f. d.
 5. 0. 35
 4. 0. 34
 7. 0. 32
 13. 0. 11
 17. 1. 3
 2. 3. 24
49. 3. 19



Joseph Lee estate, 1803.
 The 49-acre estate included
 a 3-acre field north of Vassal
 Lane and 17 acres with river
 frontage south of Brattle
 Street.

W.A. MASON & SON. CIVIL ENGINEERS AND SURVEYORS

Established 1839

CENTRAL SQUARE,
CAMBRIDGEPORT.

PURCHASE,
SALE
AND
DEVELOPMENT
OF
REAL
ESTATE.



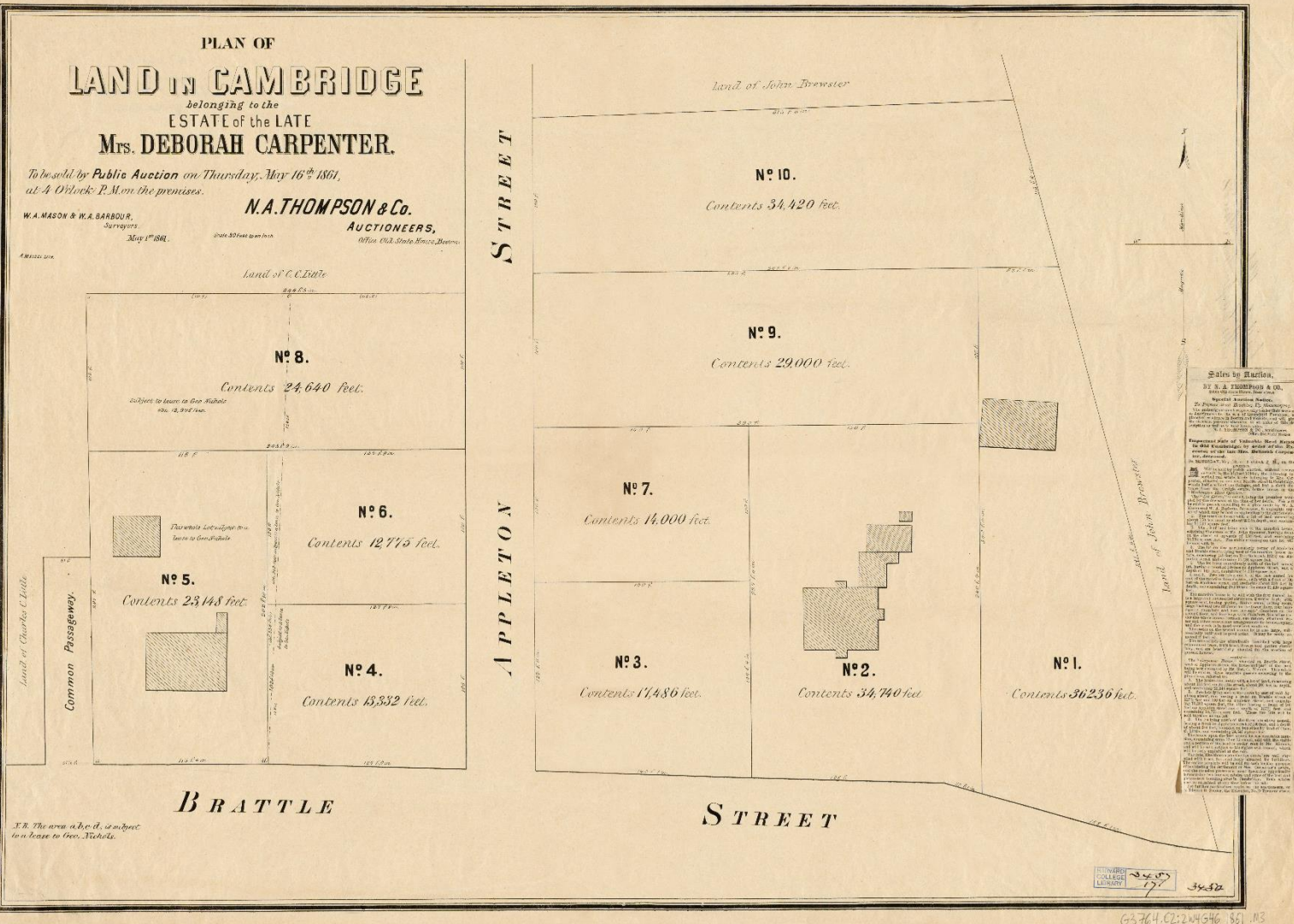
RESIDENCE
RAYMOND
STREET
OLD
CAMBRIDGE
NEAR
BOTANICAL
GARDENS

"WHO FORTH FROM CROWDED CITY LEAD THE LENGTHENING STREET"
William Cullen Bryant

PLAN OF
LAND IN CAMBRIDGE
belonging to the
ESTATE of the LATE
Mrs. DEBORAH CARPENTER.

To be sold by Public Auction on Thursday, May 16th 1861,
at 4 O'clock P.M. on the premises.

W. A. MASON & W. A. BARBOUR,
Surveyors
May 1st 1861.
N. A. THOMPSON & Co.
AUCTIONEERS,
Office, Old State House, Boston.



The division of Mrs. Deborah Carpenter's estate in 1861. "English Thomas" Lee's house and barn at 153 Brattle Street are at right; the Hooper-Lee-Nichols house at 159 Brattle is at left.

HARVARD COLLEGE LIBRARY
3432
63764.C2:2 v4346 .351 .M3



James Read Jr. house,
88 Appleton Street (1859).
Photo 1896.



Lechmere-Sewall-Riedesel house on its original site, after John Brewster raised it and inserted a new ground floor in 1869. In 1886 William Brewster removed the original top story and moved the house to 149 Brattle. Photo 1885.



5, 7, and 9 Riedesel Avenue (left); 17-19 and 23-25 Brewster Street (background). Photo 1885–1887



Charles Deane house, 80 Sparks Street (1858) and stable (1867)



Dr. Morrill Wyman house,
77 Sparks Street
(1860; demolished 1945).
Current site of Hemlock Road.
Photo ca. 1938.



James A. Noyes house, 1 Highland Street (1893–94, Longfellow, Alden & Harlow, architects).

Huron Avenue
in 1883



Huron Avenue
in 1889



Huron Avenue
in 1894





Gen. Edward Hincks house, 333 Huron Ave./81-83 Fayerweather St. (1892).
The photographer was standing near the intersection of Reservoir Street
and Huron Avenue, looking northwest. Photo ca. 1895.

**By S. R. KNIGHTS & CO.,
Auctioneers.**

OFFICES 226 WASHINGTON STREET, BOSTON, AND
615 MASSACHUSETTS AVENUE, CAMBRIDGEPORT.

**TRUSTEES' SALE
OF
TWO
LOTS OF LAND
ON
HURON AVENUE,
CAMBRIDGE.**

Between FAYERWEATHER and RESERVOIR STS.

Will be sold by Public Auction,

FRIDAY, JUNE · · 26th, 1896,

At 4 o'clock, P. M., on the Premises.

**The Lots each Front on Huron Avenue,
about 90 feet, depth about 140, areas 12,258 square
feet and 14,355.**

**Terms, Cash on delivery of deed, or one-quarter cash,
balance on mortgage, interest 4 1-2 per cent.**

**To see plan and for further particulars, call at office
Ellis & Melledge, Lyceum Building, Harvard Square,
Cambridge, or of Auctioneers, 226 Washington Street,
Boston.**

Auction of lots formerly owned
by General Hincks and
built up by Bernard Rice with
houses at 306, 312, 316 and 320
Huron Avenue in 1896

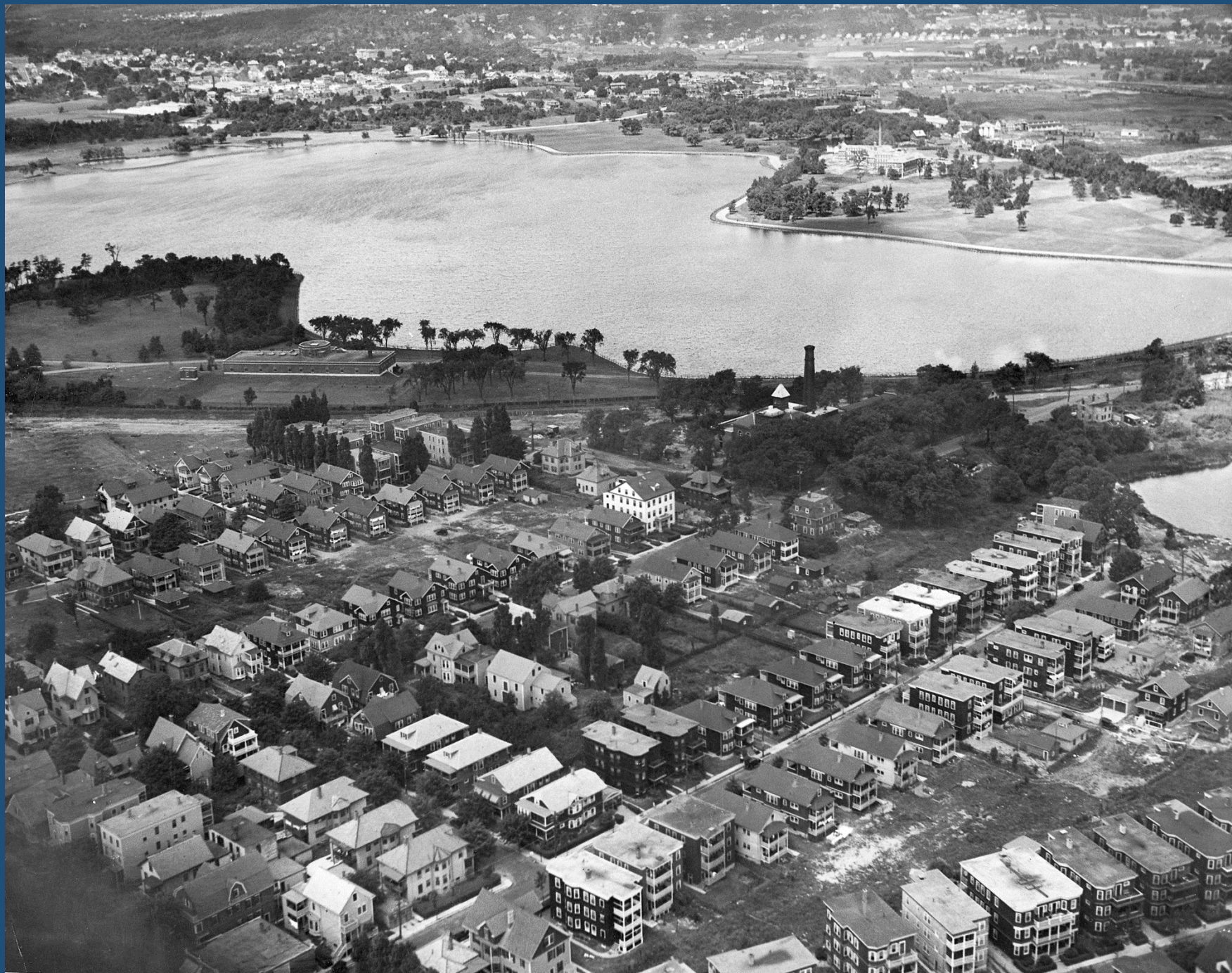


1924

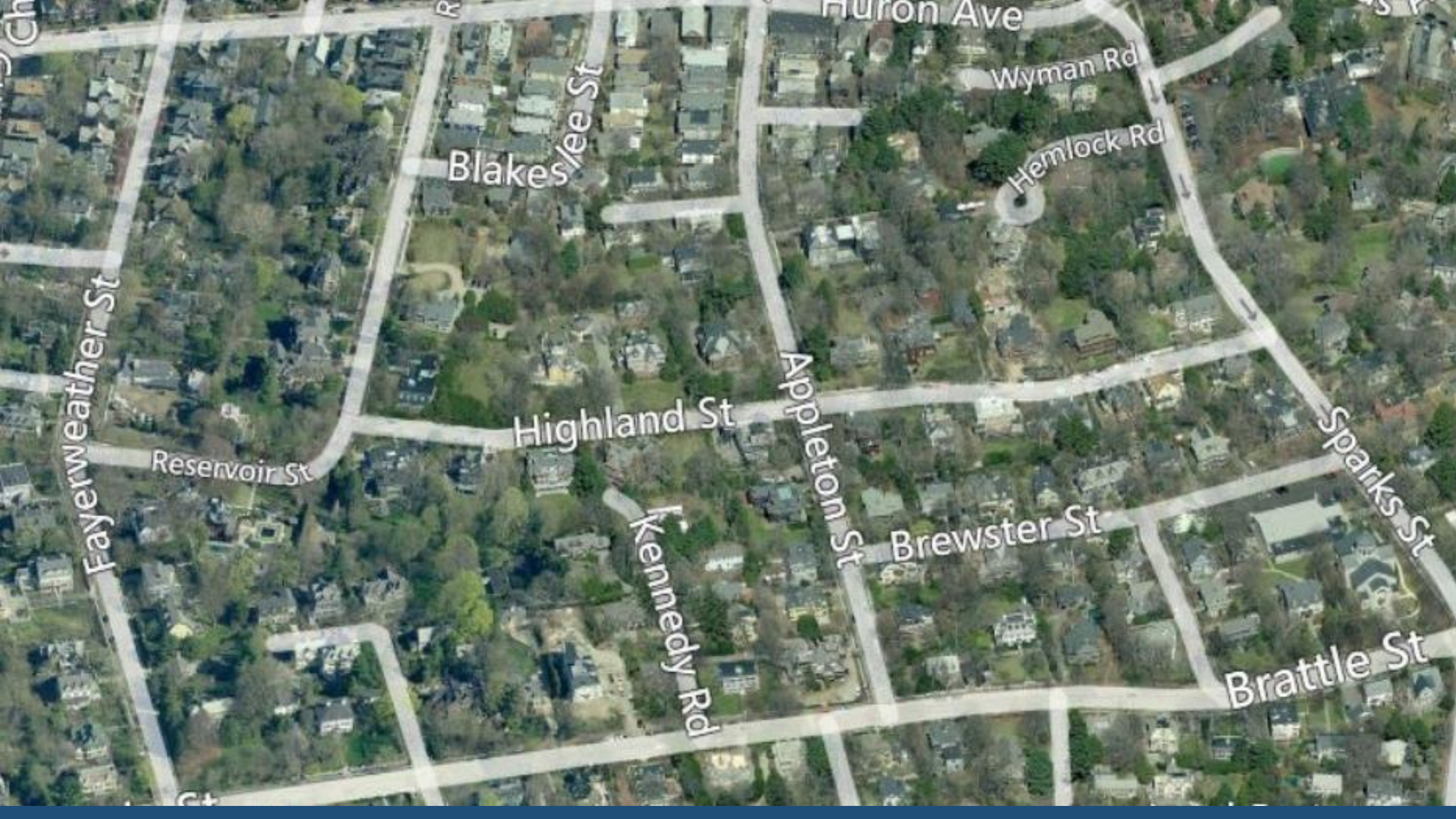
VIEW OF RESERVOIR STREET FROM HURON AVENUE, SHOWING THE TYPE OF DESIRABLE HOMES THAT MR. HURLEY HAS BEEN ACTIVE IN PROMOTING IN CAMBRIDGE.



Forris Norris stores, 342-356 Huron Avenue (1912). Photo 1939.



Three-deckers and two-family houses north of Huron Avenue from Chilton Street (foreground) to Lexington Avenue. Photo 1929.



Blakeslee St

Highland St

Kennedy Rd

Appleton St

Brewster St

Brattle St

Wyman Rd

Hemlock Rd

Sparks St

Huron Ave

Fayerweather St

Reservoir St

Ct