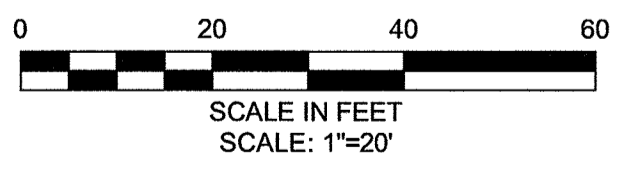


- CONSTRUCTION NOTES:**
1. WORK IN SEAGRAVE ROAD SHALL MEET THE REQUIREMENTS OF THE CITY OF CAMBRIDGE DEPARTMENT OF PUBLIC WORKS.
 2. SEE DETAIL SHEETS GC-8 AND GC-9 FOR CURB INSTALLATION, PEDESTRIAN RAMP AND SIDEWALK CONSTRUCTION DETAILS.
 3. REFER TO DRAWINGS G-4 THRU G-7 FOR CONSTRUCTION BASELINE DRAWINGS.
 4. CONTRACTOR SHALL ADJUST EXISTING UTILITY COVERS AND CASTINGS TO RE-GRADED SURFACES AT NO ADDITIONAL COST TO OWNER. THE CONTRACTOR SHALL COORDINATE WITH RESPECTIVE UTILITY COMPANIES FOR GAS/TELECOM/CABLE/ELECTRIC.
 5. ALL VERTICAL GRANITE CURBING WITHIN SIDEWALK AND PULVERIZING LIMITS SHALL BE REMOVED AND RESET UNLESS OTHERWISE NOTED.
 6. CONTRACTOR TO ADJUST TREE PIT OPENINGS AS NECESSARY TO MAINTAIN A MINIMUM 3'-0" WIDE SIDEWALK BETWEEN TREE PIT AND BACK OF SIDEWALK.
 7. CONTRACTOR SHALL MAINTAIN A MINIMUM DISTANCE OF 3'-0" FROM THE BACK OF SIDEWALK TO ANY OBJECT INCLUDING BUT NOT LIMITED TO; SIGN POSTS, HYDRANTS AND UTILITY, AND LIGHT POLES.
 8. ALL SIGN POSTS WITHIN PROJECT AREA TO BE REPLACED AND EXISTING SIGN TO BE RESET. EXISTING SIGNS LOCATED WITHIN PROPOSED PEDESTRIAN RAMPS SHALL BE RELOCATED OUTSIDE OF PEDESTRIAN RAMPS.
 9. TREES TO REMAIN SHALL BE PROTECTED THROUGHOUT CONSTRUCTION.
 10. GRADING AT THE BACK OF SIDEWALK AT DRIVEWAYS SHALL TIE INTO EXISTING DRIVEWAY GRADES WITH A SLOPE NOT TO EXCEED 12%.



CONFORMED SET

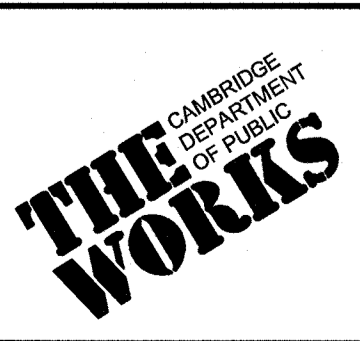
PLOT DATE: 1/14/2010 12:30:43 PM USER: BRYANT REVES FILENAME: C:\clients\Cambridge MA\2008288 - CAM 400 Sewer Separation\Civil\Seagrave RD\2008288.03-Seagrave const.dwg

SEA
 SEA CONSULTANTS INC.
 Scientists/Engineers/Architects
 CAMBRIDGE, MASSACHUSETTS CONCORD, NEW HAMPSHIRE
 ROCKY HILL, CONNECTICUT AUGUSTA, MAINE
 FRAMINGHAM, MASSACHUSETTS

MWH
 BOSTON
 MASSACHUSETTS

VINCENT W. SPADA
 SANITARY
 No. 31436
 REGISTERED PROFESSIONAL ENGINEER

Scale	AS NOTED		
Date	JANUARY 15, 2010		
Job No.	2008288.03-A		
Designed by	TAL		
Drawn by	TAL		
Checked by	SFJ	No.	Description
Approved by	VWS		Date



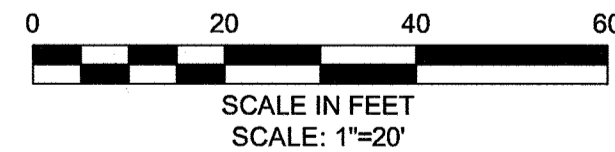
Client	CITY OF CAMBRIDGE, MA
Project	ALEWIFE BROOK FLOATABLES CONTROL (CONTRACT 4) AND CAM 400 SEWER SEPARATION PROJECT (CONTRACT 13)
Drawing	SEAGRAVE ROAD - CONSTRUCTION PLAN STA 2000+00 TO 2004+00

Sheet	R-12
File No.	53 OF 102



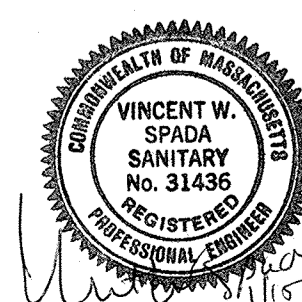
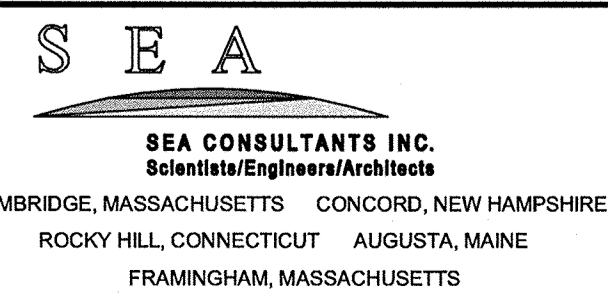
CONSTRUCTION NOTES:

1. WORK IN SEAGRAVE ROAD SHALL MEET THE REQUIREMENTS OF THE CITY OF CAMBRIDGE DEPARTMENT OF PUBLIC WORKS.
2. SEE DETAIL SHEETS GC-8 AND GC-9 FOR CURB INSTALLATION, PEDESTRIAN RAMP AND SIDEWALK CONSTRUCTION DETAILS.
3. REFER TO DRAWINGS G-4 THRU G-7 FOR CONSTRUCTION BASELINE DRAWINGS.
4. CONTRACTOR SHALL ADJUST EXISTING UTILITY COVERS AND CASTINGS TO RE-GRADED SURFACES AT NO ADDITIONAL COST TO OWNER. THE CONTRACTOR SHALL COORDINATE WITH RESPECTIVE UTILITY COMPANIES FOR GAS/TELECOM/CABLE/ELECTRIC.
5. ALL VERTICAL GRANITE CURBING WITHIN SIDEWALK AND PULVERIZING LIMITS SHALL BE REMOVED AND RESET UNLESS OTHERWISE NOTED.
6. CONTRACTOR TO ADJUST TREE PIT OPENINGS AS NECESSARY TO MAINTAIN A MINIMUM 3'-0" WIDE SIDEWALK BETWEEN TREE PIT AND BACK OF SIDEWALK.
7. CONTRACTOR SHALL MAINTAIN A MINIMUM DISTANCE OF 3'-0" FROM THE BACK OF SIDEWALK TO ANY OBJECT INCLUDING BUT NOT LIMITED TO; SIGN POSTS, HYDRANTS AND UTILITY, AND LIGHT POLES.
8. ALL SIGN POSTS WITHIN PROJECT AREA TO BE REPLACED AND EXISTING SIGN TO BE RESET. EXISTING SIGNS LOCATED WITHIN PROPOSED PEDESTRIAN RAMPS SHALL BE RELOCATED OUTSIDE OF PEDESTRIAN RAMPS.
9. TREES TO REMAIN SHALL BE PROTECTED THROUGHOUT CONSTRUCTION.
10. GRADING AT THE BACK OF SIDEWALK AT DRIVEWAYS SHALL TIE INTO EXISTING DRIVEWAY GRADES WITH A SLOPE NOT TO EXCEED 12%.

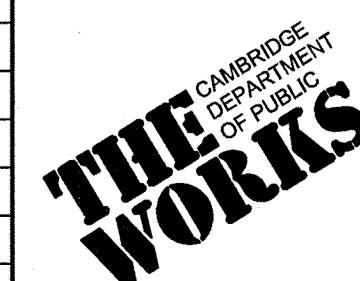


CONFORMED SET

PLOT DATE=1/14/2010 12:31:04 PM USER=BRYANT REYES FILENAME=G:\clients\Cambridge MA\2008288-CAM 400 Sewer Separation\Civil\Seagrave Rd\2008288.03-Seagrave const.dwg

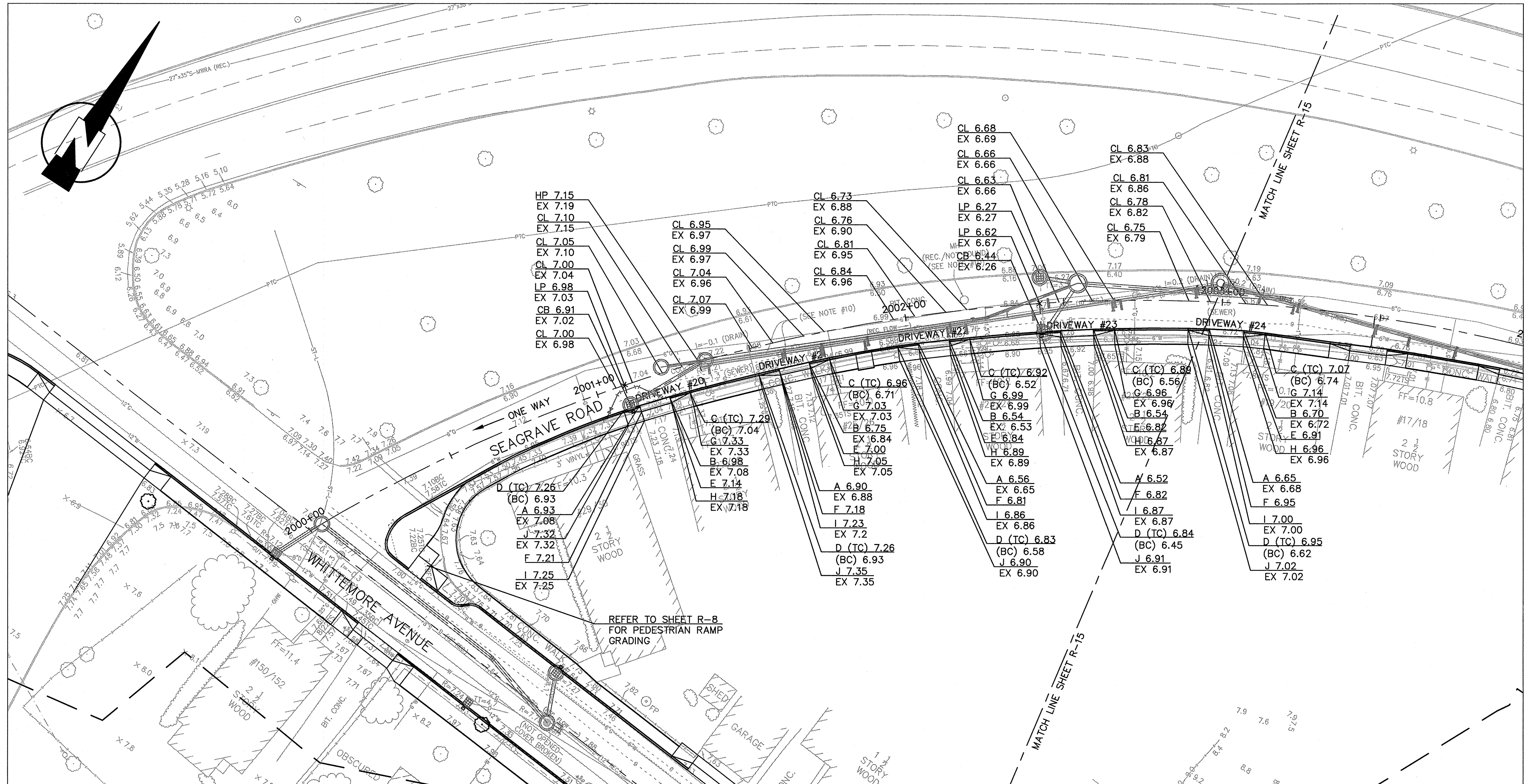


Scale	AS NOTED		
Date	JANUARY 15, 2010		
Job No.	2008288.03-A		
Designed by	TAL		
Drawn by	TAL		
Checked by	SFJ	No.	Description
Approved by	VWS		REVISIONS

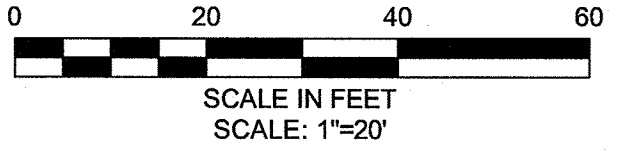


Client	CITY OF CAMBRIDGE, MA
Project	ALEWIFE BROOK FLOATABLES CONTROL (CONTRACT 4) AND CAM 400 SEWER SEPARATION PROJECT (CONTRACT 13)
Drawing	SEAGRAVE ROAD - CONSTRUCTION PLAN STA 2004+00 TO 2008+08

Sheet	R-13
File No.	54 OF 102



PLOT DATE: 1/14/2010 12:31:41 PM USER: BRYANT REYES FILENAME: G:\clients\Cambridge MA\2008288 - CAM 400 Sewer Separation\CH\Seagrave Rd\2008288.03-Seagrave grading.dwg



CONFORMED SET

 SEA CONSULTANTS INC. <small>SCIENTIST/ENGINEER/ARCHITECTS</small> CAMBRIDGE, MASSACHUSETTS CONCORD, NEW HAMPSHIRE ROCKY HILL, CONNECTICUT AUGUSTA, MAINE FRAMINGHAM, MASSACHUSETTS	 MWH BOSTON MASSACHUSETTS	 VINCENT W. SPADA SANITARY No. 81436 REGISTERED PROFESSIONAL ENGINEER	<table border="1" style="width: 100%; border-collapse: collapse;"> <tr><td>Scale</td><td>AS NOTED</td><td></td><td></td></tr> <tr><td>Date</td><td>JANUARY 15, 2010</td><td></td><td></td></tr> <tr><td>Job No.</td><td>2008288.03-A</td><td></td><td></td></tr> <tr><td>Designed by</td><td>TAL</td><td></td><td></td></tr> <tr><td>Drawn by</td><td>TAL</td><td></td><td></td></tr> <tr><td>Checked by</td><td>SFJ</td><td>No.</td><td>Description</td></tr> <tr><td>Approved by</td><td>VWS</td><td></td><td>REVISIONS</td></tr> </table>	Scale	AS NOTED			Date	JANUARY 15, 2010			Job No.	2008288.03-A			Designed by	TAL			Drawn by	TAL			Checked by	SFJ	No.	Description	Approved by	VWS		REVISIONS		<table border="1" style="width: 100%; border-collapse: collapse;"> <tr><td>Client</td><td>CITY OF CAMBRIDGE, MA</td></tr> <tr><td>Project</td><td>ALEWIFE BROOK FLOATABLES CONTROL (CONTRACT 4) AND CAM 400 SEWER SEPARATION PROJECT (CONTRACT 13)</td></tr> <tr><td>Drawing</td><td>SEAGRAVE ROAD - GRADING PLAN STA 2000+00 TO 2004+00</td></tr> </table>	Client	CITY OF CAMBRIDGE, MA	Project	ALEWIFE BROOK FLOATABLES CONTROL (CONTRACT 4) AND CAM 400 SEWER SEPARATION PROJECT (CONTRACT 13)	Drawing	SEAGRAVE ROAD - GRADING PLAN STA 2000+00 TO 2004+00	Sheet R-14 <small>55 OF 102</small> File No.
Scale	AS NOTED																																							
Date	JANUARY 15, 2010																																							
Job No.	2008288.03-A																																							
Designed by	TAL																																							
Drawn by	TAL																																							
Checked by	SFJ	No.	Description																																					
Approved by	VWS		REVISIONS																																					
Client	CITY OF CAMBRIDGE, MA																																							
Project	ALEWIFE BROOK FLOATABLES CONTROL (CONTRACT 4) AND CAM 400 SEWER SEPARATION PROJECT (CONTRACT 13)																																							
Drawing	SEAGRAVE ROAD - GRADING PLAN STA 2000+00 TO 2004+00																																							



PLOT DATE: 1/14/2010 12:31:59 PM USER: BRYANT REYES FILENAME: G:\clients\Cambridge MA\2008288 - CAM 400 Sewer Separation\Civil\Seagrave Rd\2008288.03 - Seagrave grading.dwg

CONFORMED SET

SEA
SEA CONSULTANTS INC.
 Scientists/Engineers/Architects
 CAMBRIDGE, MASSACHUSETTS CONCORD, NEW HAMPSHIRE
 ROCKY HILL, CONNECTICUT AUGUSTA, MAINE
 FRAMINGHAM, MASSACHUSETTS

MWH
 BOSTON
 MASSACHUSETTS

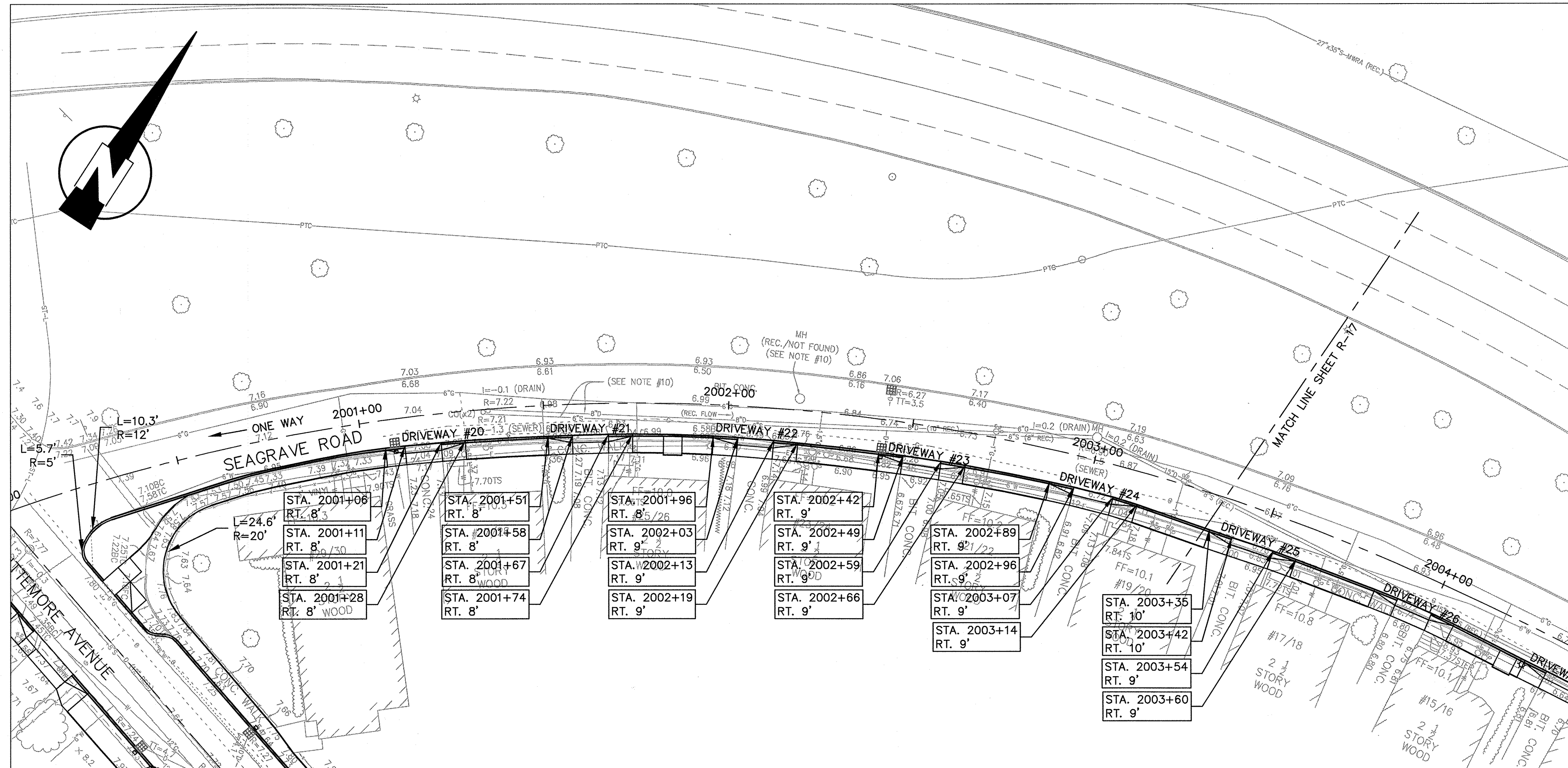
VINCENT W. SPADA
 SANITARY
 No. 31436
 REGISTERED PROFESSIONAL ENGINEER

Scale	AS NOTED		
Date	JANUARY 15, 2010		
Job No.	2008288.03-A		
Designed by	TAL		
Drawn by	TAL		
Checked by	SFJ	No.	Description
Approved by	VWS		Date
REVISIONS			

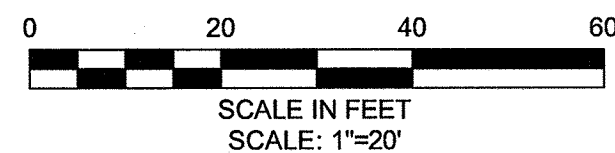


Client	CITY OF CAMBRIDGE, MA
Project	ALEWIFE BROOK FLOATABLES CONTROL (CONTRACT 4) AND CAM 400 SEWER SEPARATION PROJECT (CONTRACT 13)
Drawing	SEAGRAVE ROAD - GRADING PLAN STA 2004+00 TO 2008+08

Sheet	R-15
File No.	56 OF 102



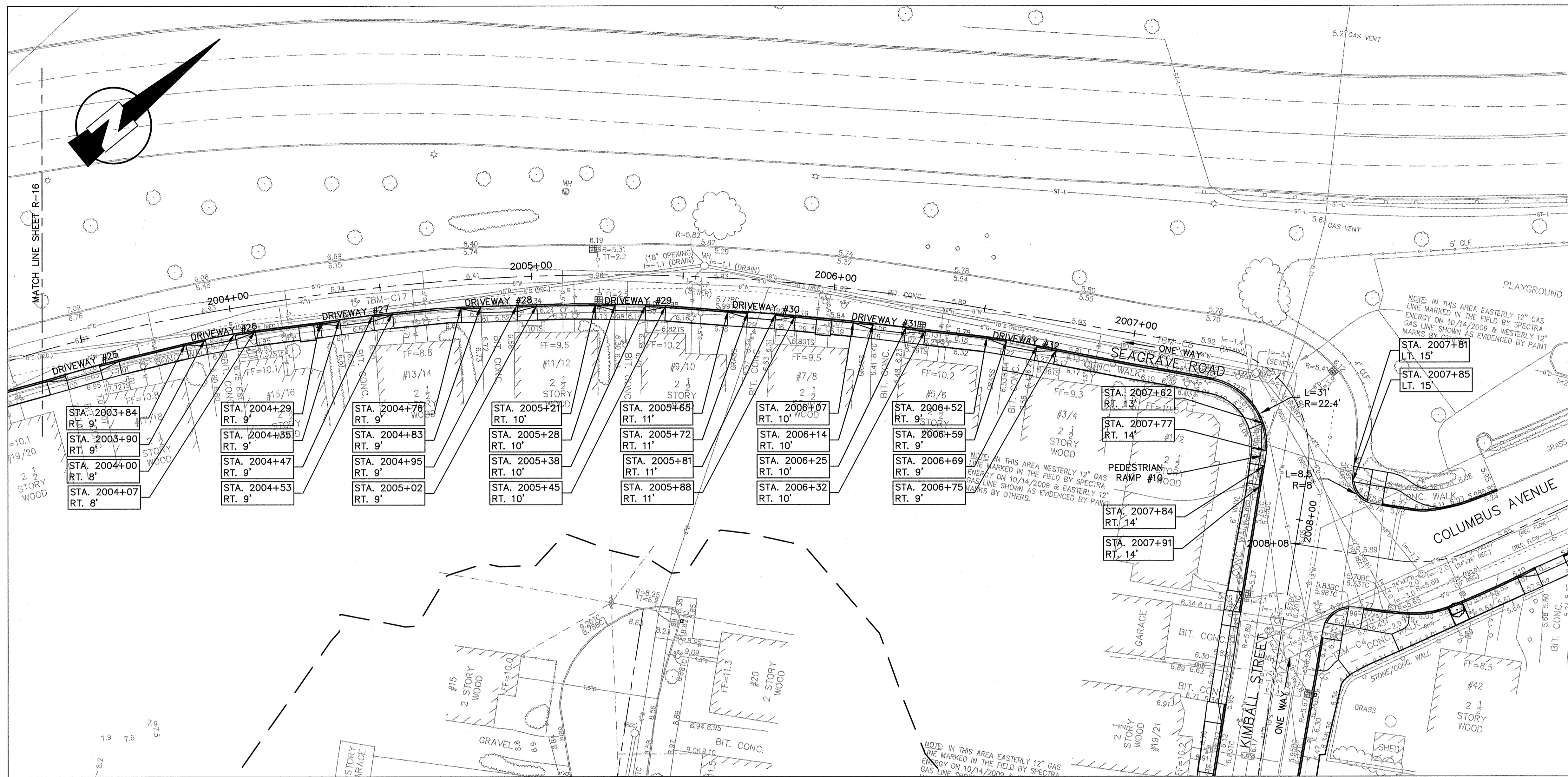
DW #	RAMP REFERENCE POINT		WIDTH OF SIDEWALK, W (FT)	WIDTH OF OPENING (FT)	TRANSITION LENGTH	
	STATION	OFFSET			*LEFT SIDE	*RIGHT SIDE
20	2001+16	RT	4.5	9.8	6'-6"	6'-6"
21	2001+62	RT	4.5	9.7	6'-6"	6'-6"
22	2002+08	RT	4.5	9.8	6'-6"	6'-6"
23	2002+50	RT	4.5	10.5	6'-6"	6'-6"
24	2003+00	RT	4.5	11.0	6'-6"	6'-6"
25	2003+50	RT	4.5	11.7	6'-6"	6'-6"



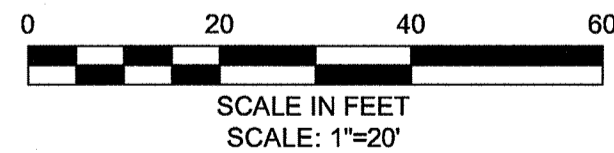
CONFORMED SET

PLOT DATE: 1/14/2010 12:32:42 PM USER: BRYANT REYES FILENAME: G:_d\civil\Cambridge MA\2008288 - CAM 400 Sewer Separation\Civil\Seagrave Rd\2008288.03-Seagrave curbing.dwg

 SEA CONSULTANTS INC. <small>Scientists/Engineers/Architects</small> CAMBRIDGE, MASSACHUSETTS CONCORD, NEW HAMPSHIRE ROCKY HILL, CONNECTICUT AUGUSTA, MAINE FRAMINGHAM, MASSACHUSETTS	 MWH <small>BOSTON MASSACHUSETTS</small>	 VINCENT W. SPADA <small>SANITARY No. 31436</small> REGISTERED PROFESSIONAL ENGINEER	<table border="1" style="width: 100%; border-collapse: collapse;"> <tr><td>Scale</td><td>AS NOTED</td></tr> <tr><td>Date</td><td>JANUARY 15, 2010</td></tr> <tr><td>Job No.</td><td>2008288.03-A</td></tr> <tr><td>Designed by</td><td>TAL</td></tr> <tr><td>Drawn by</td><td>TAL</td></tr> <tr><td>Checked by</td><td>SFJ</td></tr> <tr><td>Approved by</td><td>VWS</td></tr> </table>	Scale	AS NOTED	Date	JANUARY 15, 2010	Job No.	2008288.03-A	Designed by	TAL	Drawn by	TAL	Checked by	SFJ	Approved by	VWS	 THE WORKS <small>CAMBRIDGE DEPARTMENT OF PUBLIC WORKS</small>	<table border="1" style="width: 100%; border-collapse: collapse;"> <tr><td>Client</td><td>CITY OF CAMBRIDGE, MA</td></tr> <tr><td>Project</td><td>ALEWIFE BROOK FLOATABLES CONTROL (CONTRACT 4) AND CAM 400 SEWER SEPARATION PROJECT (CONTRACT 13)</td></tr> <tr><td>Drawing</td><td>SEAGRAVE ROAD - CURB TIE PLAN STA 2000+00 TO 2004+00</td></tr> </table>	Client	CITY OF CAMBRIDGE, MA	Project	ALEWIFE BROOK FLOATABLES CONTROL (CONTRACT 4) AND CAM 400 SEWER SEPARATION PROJECT (CONTRACT 13)	Drawing	SEAGRAVE ROAD - CURB TIE PLAN STA 2000+00 TO 2004+00	<table border="1" style="width: 100%; border-collapse: collapse;"> <tr><td>Sheet</td><td>R-16</td></tr> <tr><td>File No.</td><td>57 OF 102</td></tr> </table>	Sheet	R-16	File No.	57 OF 102
Scale	AS NOTED																													
Date	JANUARY 15, 2010																													
Job No.	2008288.03-A																													
Designed by	TAL																													
Drawn by	TAL																													
Checked by	SFJ																													
Approved by	VWS																													
Client	CITY OF CAMBRIDGE, MA																													
Project	ALEWIFE BROOK FLOATABLES CONTROL (CONTRACT 4) AND CAM 400 SEWER SEPARATION PROJECT (CONTRACT 13)																													
Drawing	SEAGRAVE ROAD - CURB TIE PLAN STA 2000+00 TO 2004+00																													
Sheet	R-16																													
File No.	57 OF 102																													

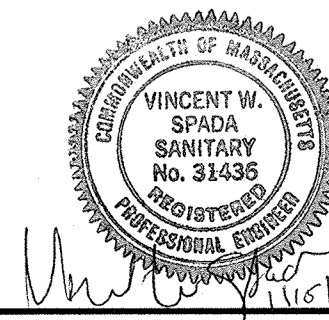


DW #	RAMP REFERENCE POINT		WIDTH OF SIDEWALK, W (FT)	WIDTH OF OPENING (FT)	TRANSITION LENGTH	
	STATION	OFFSET			*LEFT SIDE	*RIGHT SIDE
26	2003+95	RT	4.5	10.1	6'-6"	6'-6"
27	2004+41	RT	4.5	11.0	6'-6"	6'-6"
28	2004+89	RT	4.5	12.1	6'-6"	6'-6"
29	2005+33	RT	4.5	10.0	6'-6"	6'-6"
30	2005+77	RT	4.5	9.2	6'-6"	6'-6"
31	2006+20	RT	4.5	10.9	6'-6"	6'-6"
32	2006+64	RT	4.5	10.1	6'-6"	6'-6"



CONFORMED SET

PLOT DATE: 1/14/2010 12:30:06 PM USER: BRYANT REVES FILENAME: G:\clients\Cambridge MA\2008288 - CAM 400 Sewer Separation\Civil\Seagrave Rd\2008288.03-Seagrave curbing.dwg



Scale	AS NOTED		
Date	JANUARY 15, 2010		
Job No.	2008288.03-A		
Designed by	TAL		
Drawn by	TAL		
Checked by	SFJ	No.	Description
Approved by	VWS		Date



Client	CITY OF CAMBRIDGE, MA
Project	ALEWIFE BROOK FLOATABLES CONTROL (CONTRACT 4) AND CAM 400 SEWER SEPARATION PROJECT (CONTRACT 13)
Drawing	SEAGRAVE ROAD - CURB TIE PLAN STA 2004+00 TO 2008+08

Sheet	R-17
File No.	58 OF 102