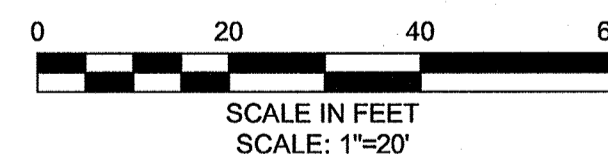


CONSTRUCTION NOTES:

1. WORK IN COLUMBUS AVENUE SHALL MEET THE REQUIREMENTS OF THE CITY OF CAMBRIDGE DEPARTMENT OF PUBLIC WORKS.
2. SEE DETAIL SHEETS GC-8 AND GC-9 FOR CURB INSTALLATION, PEDESTRIAN RAMP AND SIDEWALK CONSTRUCTION DETAILS.
3. REFER TO DRAWINGS G-4 THRU G-7 FOR CONSTRUCTION BASELINE DRAWINGS.
4. CONTRACTOR SHALL ADJUST EXISTING UTILITY COVERS AND CASTINGS TO RE-GRADED SURFACES AT NO ADDITIONAL COST TO OWNER. THE CONTRACTOR SHALL COORDINATE WITH RESPECTIVE UTILITY COMPANIES FOR GAS/TELECOM/CABLE/ELECTRIC.
5. ALL VERTICAL GRANITE CURBING WITHIN SIDEWALK AND PULVERIZING LIMITS SHALL BE REMOVED AND RESET UNLESS OTHERWISE NOTED.
6. CONTRACTOR TO ADJUST TREE PIT OPENINGS AS NECESSARY TO MAINTAIN A MINIMUM 3'-0" WIDE SIDEWALK BETWEEN TREE PIT AND BACK OF SIDEWALK.
7. CONTRACTOR SHALL MAINTAIN A MINIMUM DISTANCE OF 3'-0" FROM THE BACK OF SIDEWALK TO ANY OBJECT INCLUDING BUT NOT LIMITED TO; SIGN POSTS, HYDRANTS AND UTILITY, AND LIGHT POLES.
8. ALL SIGN POSTS WITHIN PROJECT AREA TO BE REPLACED AND EXISTING SIGN TO BE RESET. EXISTING SIGNS LOCATED WITHIN PROPOSED PEDESTRIAN RAMPS SHALL BE RELOCATED OUTSIDE OF PEDESTRIAN RAMPS.
9. TREES TO REMAIN SHALL BE PROTECTED THROUGHOUT CONSTRUCTION.
10. GRADING AT THE BACK OF SIDEWALK AT DRIVEWAYS SHALL TIE INTO EXISTING DRIVEWAY GRADES WITH A SLOPE NOT TO EXCEED 12%.



CONFORMED SET

PLOT DATE: 1/14/2010 12:42:41 PM USER: BRYANT REYES FILENAME: G:\clients\cambridge\MA\2008288.03-CAM 400 Sewer Separation\Civil\Columbus Ave\2008288.03-Columbus confrm.dwg

SEA
SEA CONSULTANTS INC.
 Scientists/Engineers/Architects
 CAMBRIDGE, MASSACHUSETTS CONCORD, NEW HAMPSHIRE
 ROCKY HILL, CONNECTICUT AUGUSTA, MAINE
 FRAMINGHAM, MASSACHUSETTS

MWH
 BOSTON
 MASSACHUSETTS

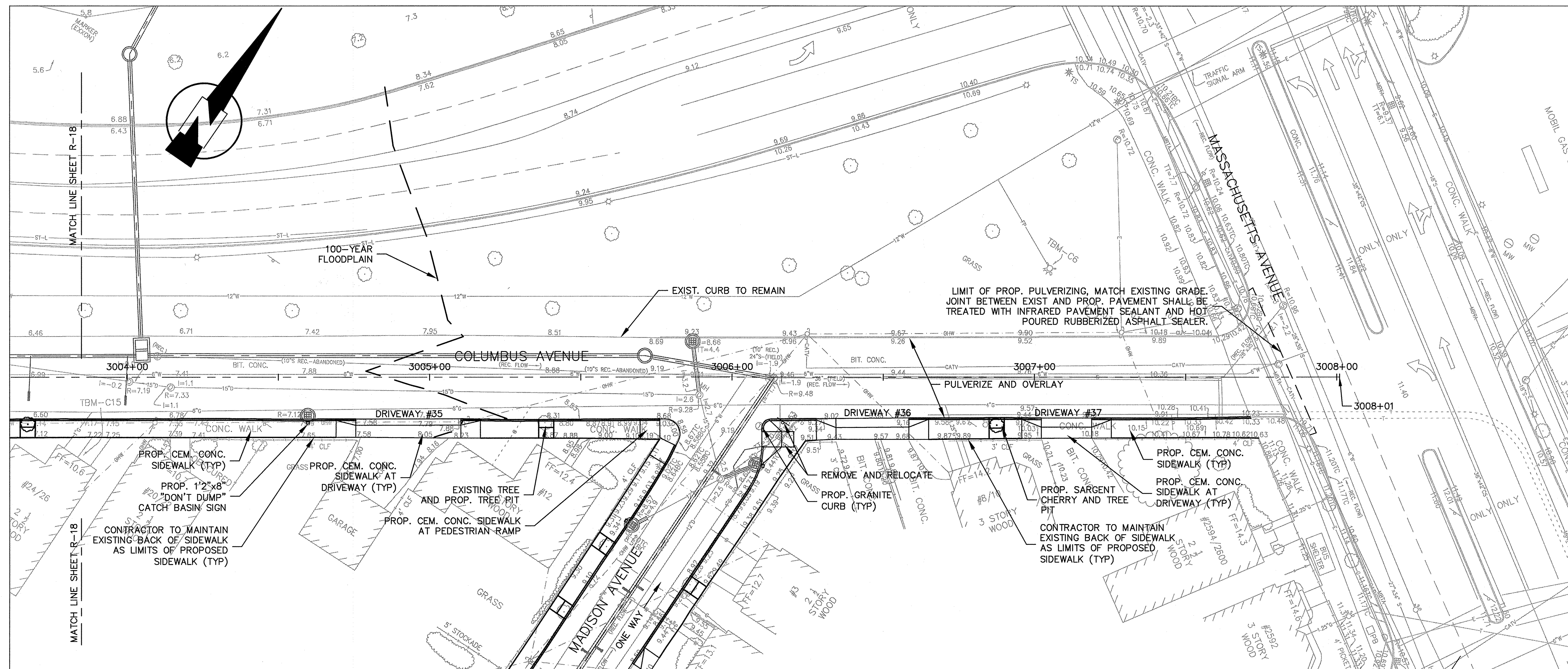
VINCENT W. SPADA
 SANITARY
 No. 51436
 REGISTERED PROFESSIONAL ENGINEER
 STATE OF MASSACHUSETTS

Scale	AS NOTED		
Date	JANUARY 15, 2010		
Job No.	2008288.03-A		
Designed by	TAL		
Drawn by	TAL		
Checked by	SFJ	No.	Description
Approved by	VWS		REVISIONS

THE WORKS
 CAMBRIDGE DEPARTMENT OF PUBLIC WORKS

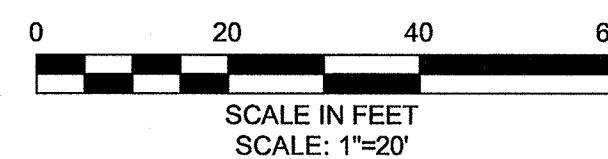
Client	CITY OF CAMBRIDGE, MA
Project	ALEWIFE BROOK FLOATABLES CONTROL (CONTRACT 4) AND CAM 400 SEWER SEPARATION PROJECT (CONTRACT 13)
Drawing	COLUMBUS AVENUE - CONSTRUCTION PLAN STA 3000+00 TO 3004+00

Sheet	R-18
File No.	59 OF 102



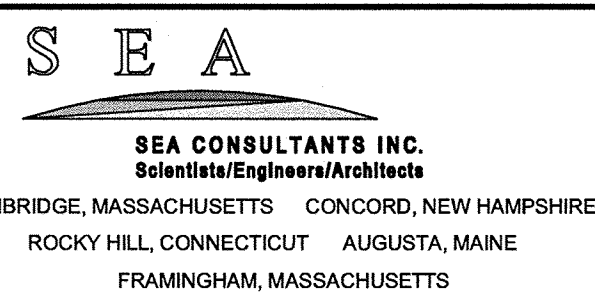
CONSTRUCTION NOTES:

1. WORK IN COLUMBUS AVENUE SHALL MEET THE REQUIREMENTS OF THE CITY OF CAMBRIDGE DEPARTMENT OF PUBLIC WORKS.
2. SEE DETAIL SHEETS GC-8 AND GC-9 FOR CURB INSTALLATION, PEDESTRIAN RAMP AND SIDEWALK CONSTRUCTION DETAILS.
3. REFER TO DRAWINGS G-4 THRU G-7 FOR CONSTRUCTION BASELINE DRAWINGS.
4. CONTRACTOR SHALL ADJUST EXISTING UTILITY COVERS AND CASTINGS TO RE-GRADED SURFACES AT NO ADDITIONAL COST TO OWNER. THE CONTRACTOR SHALL COORDINATE WITH RESPECTIVE UTILITY COMPANIES FOR GAS/TELECOM/CABLE/ELECTRIC.
5. ALL VERTICAL GRANITE CURBING WITHIN SIDEWALK AND PULVERIZING LIMITS SHALL BE REMOVED AND RESET UNLESS OTHERWISE NOTED.
6. CONTRACTOR TO ADJUST TREE PIT OPENINGS AS NECESSARY TO MAINTAIN A MINIMUM 3'-0" WIDE SIDEWALK BETWEEN TREE PIT AND BACK OF SIDEWALK.
7. CONTRACTOR SHALL MAINTAIN A MINIMUM DISTANCE OF 3'-0" FROM THE BACK OF SIDEWALK TO ANY OBJECT INCLUDING BUT NOT LIMITED TO; SIGN POSTS, HYDRANTS AND UTILITY, AND LIGHT POLES.
8. ALL SIGN POSTS WITHIN PROJECT AREA TO BE REPLACED AND EXISTING SIGN TO BE RESET. EXISTING SIGNS LOCATED WITHIN PROPOSED PEDESTRIAN RAMPS SHALL BE RELOCATED OUTSIDE OF PEDESTRIAN RAMPS.
9. TREES TO REMAIN SHALL BE PROTECTED THROUGHOUT CONSTRUCTION.
10. GRADING AT THE BACK OF SIDEWALK AT DRIVEWAYS SHALL TIE INTO EXISTING DRIVEWAY GRADES WITH A SLOPE NOT TO EXCEED 12%.

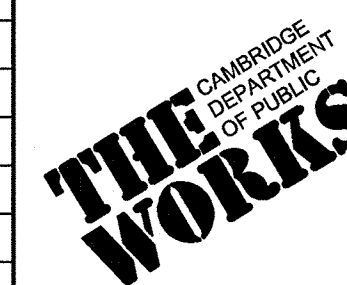


CONFORMED SET

PLOT DATE: 1/14/2010 2:43:00 PM USER: BRYANT REVES FILENAME: G:\clients\Cambridge MA\2008288 - CAM 400 Sewer Separation\Civil\Columbus Ave\2008288.03-Columbus constr.dwg



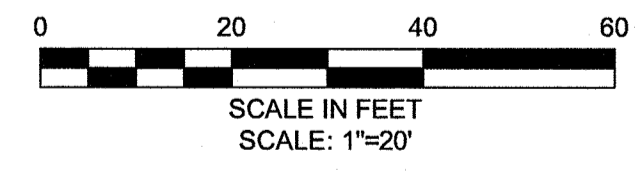
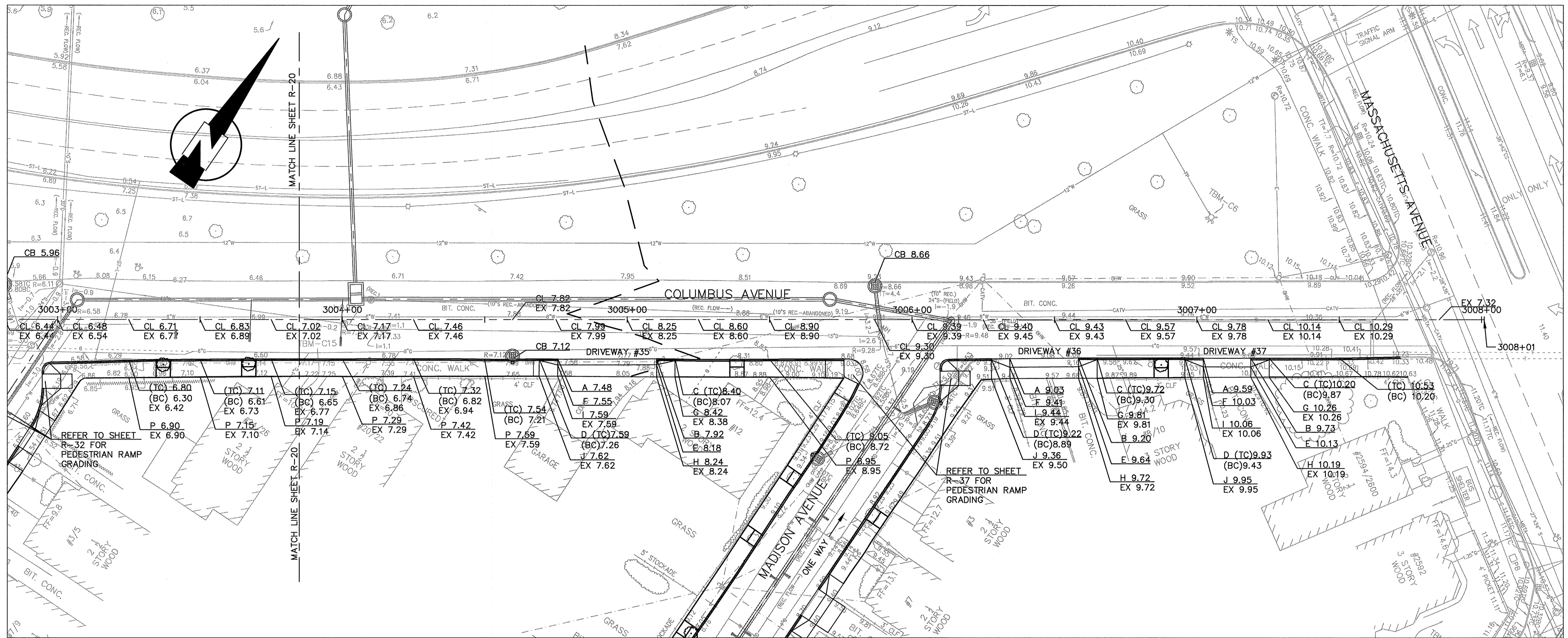
Scale	AS NOTED		
Date	JANUARY 15, 2010		
Job No.	2008288.03-A		
Designed by	TAL		
Drawn by	TAL		
Checked by	SFJ	No.	Description
Approved by	VWS		REVISIONS



Client	CITY OF CAMBRIDGE, MA
Project	ALEWIFE BROOK FLOATABLES CONTROL (CONTRACT 4) AND CAM 400 SEWER SEPARATION PROJECT (CONTRACT 13)
Drawing	COLUMBUS AVENUE - CONSTRUCTION PLAN STA 3004+00 TO 3008+01

Sheet	R-19
File No.	60 OF 102

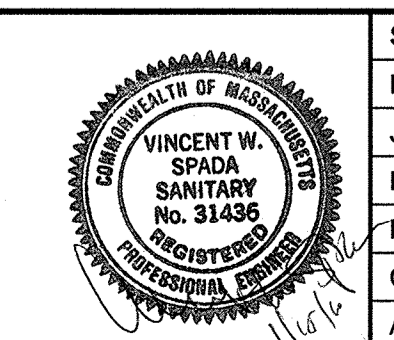
PLOT DATE: 1/14/2010 2:44:01 PM USER: BRYANT REVES FILENAME: G:\clients\cambridge\MA\2008288.03-CAM 400 Sewer Separation\Civil\Columbus Ave\2008288.03-Columbus grading.dwg



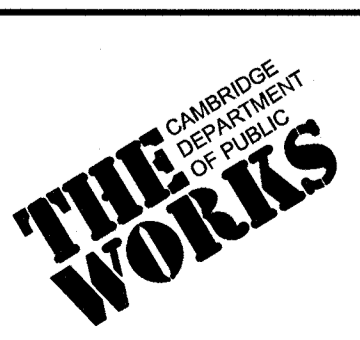
CONFORMED SET

SEA
SEA CONSULTANTS INC.
 Scientists/Engineers/Architects
 CAMBRIDGE, MASSACHUSETTS CONCORD, NEW HAMPSHIRE
 ROCKY HILL, CONNECTICUT AUGUSTA, MAINE
 FRAMINGHAM, MASSACHUSETTS

MWH
 BOSTON
 MASSACHUSETTS

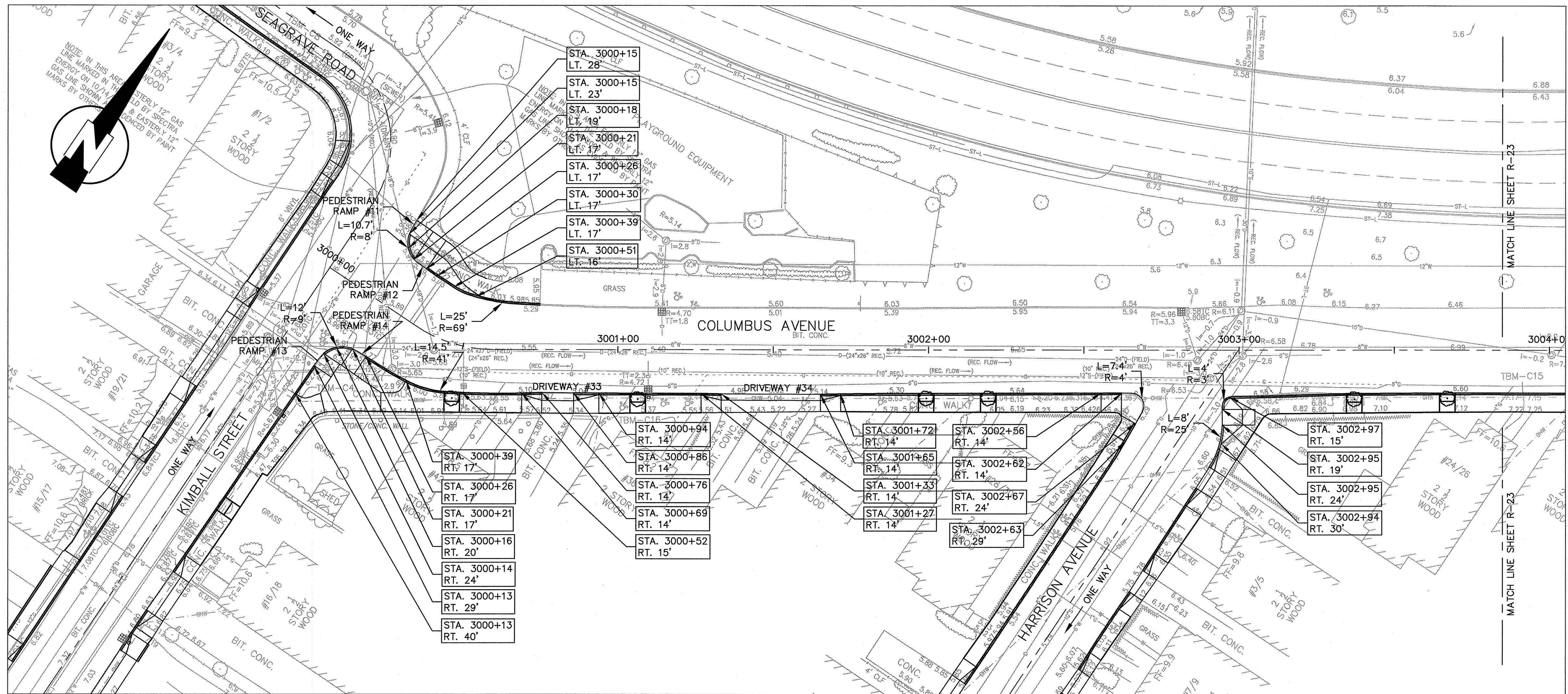


Scale	AS NOTED		
Date	JANUARY 15, 2010		
Job No.	2008288.03-A		
Designed by	TAL		
Drawn by	TAL		
Checked by	SFJ	No.	Description
Approved by	VWS		DATE
			REVISIONS



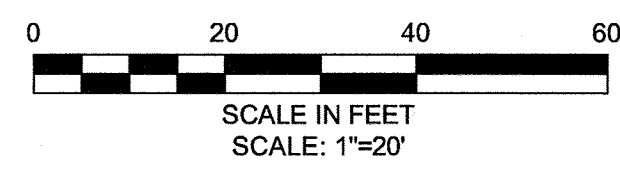
Client	CITY OF CAMBRIDGE, MA
Project	ALEWIFE BROOK FLOATABLES CONTROL (CONTRACT 4) AND CAM 400 SEWER SEPARATION PROJECT (CONTRACT 13)
Drawing	COLUMBUS AVENUE - GRADING PLAN STA 3004+00 TO 3008+01

Sheet	R-21
File No.	62 OF 102



DW #	RAMP REFERENCE POINT		WIDTH OF SIDEWALK, W (FT)	WIDTH OF OPENING (FT)	TRANSITION LENGTH	
	STATION	OFFSET			*LEFT SIDE	*RIGHT SIDE
33	3000+81	RT	6.5	10.2	8'-2"	6'-6"
34	3001+49	RT	6.0	32.0	6'-6"	6'-6"

NOTE:
 1. LEFT AND RIGHT SIDES OF THE RAMP ARE DETERMINED BY LOOKING AT THE RAMP FROM THE ROADWAY.

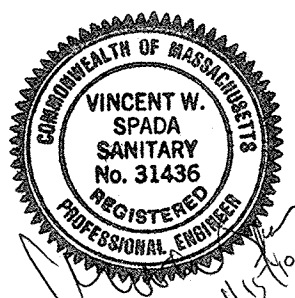


CONFORMED SET

PLOT DATE: 1/14/2010 12:44:35 PM USER: BRYANT REVES FILENAME: G:\clients\Cambridge MA\2008288-03-CAM 400 Sewer Separation\Drawings\Columbus Ave\2008288-03-Columbus curb tie.dwg

SEA
 SEA CONSULTANTS INC.
 Scientists/Engineers/Architects
 CAMBRIDGE, MASSACHUSETTS CONCORD, NEW HAMPSHIRE
 ROCKY HILL, CONNECTICUT AUGUSTA, MAINE
 FRAMINGHAM, MASSACHUSETTS

MWH
 BOSTON
 MASSACHUSETTS

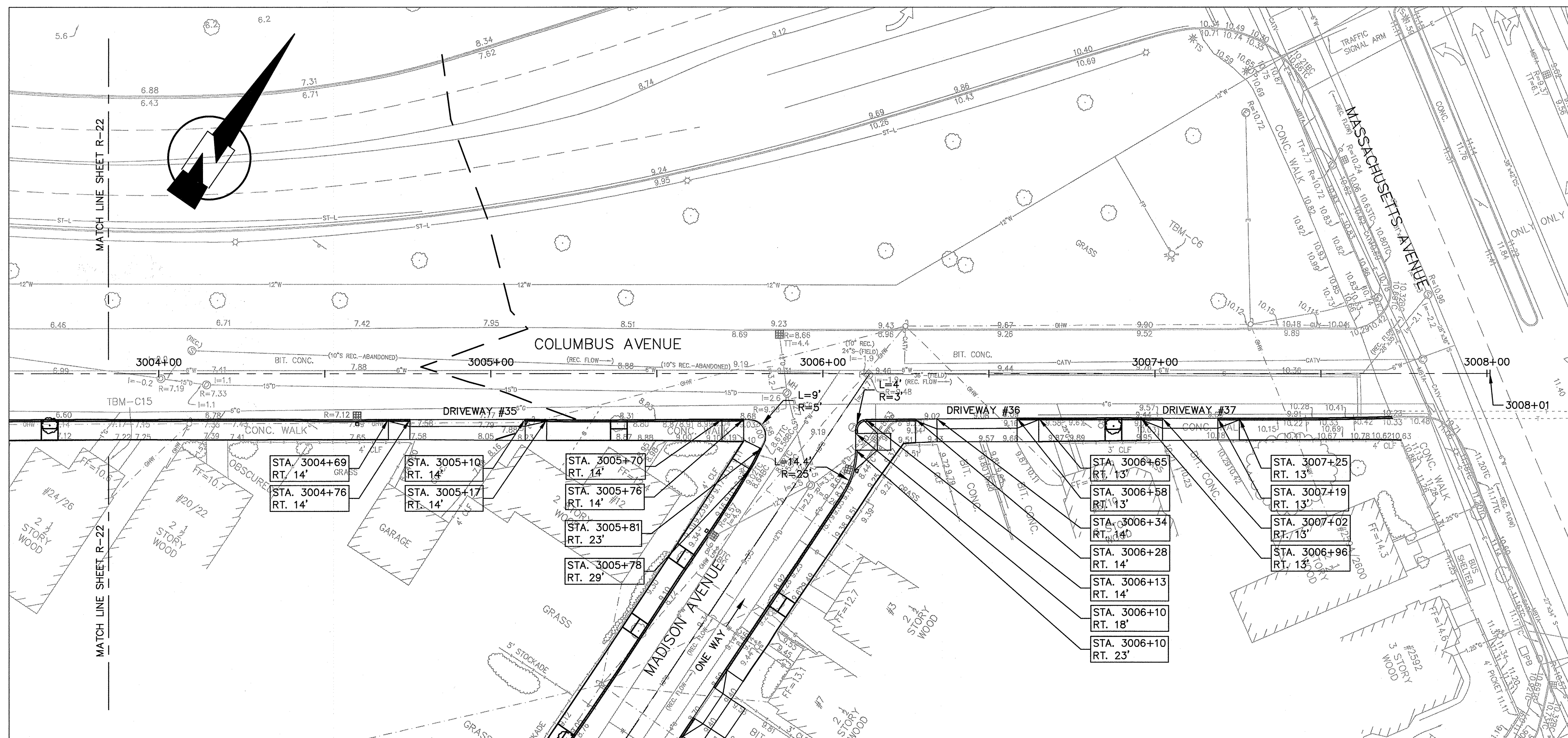


Scale	AS NOTED		
Date	JANUARY 15, 2010		
Job No.	2008288-03-A		
Designed by	TAL		
Drawn by	TAL		
Checked by	SFJ	No.	Description
Approved by	VWS		REVISIONS



Client	CITY OF CAMBRIDGE, MA
Project	ALEWIFE BROOK FLOATABLES CONTROL (CONTRACT 4) AND CAM 400 SEWER SEPARATION PROJECT (CONTRACT 13)
Drawing	COLUMBUS AVENUE - CURB TIE PLAN STA 3000+00 TO 3004+00

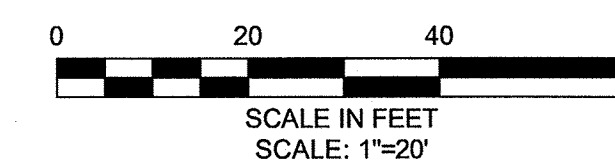
Sheet	R-22
File No.	63 OF 102



DW #	RAMP REFERENCE POINT		WIDTH OF SIDEWALK, W (FT)	WIDTH OF OPENING (FT)	TRANSITION LENGTH	
	STATION	OFFSET			*LEFT SIDE	*RIGHT SIDE
35	3004+93	RT	6.0	34.6	6'-6"	6'-6"
36	3006+46	RT	7.0	24.2	6'-6"	6'-6"
37	3007+11	RT	6.7	16.6	6'-6"	6'-6"

NOTE:

- LEFT AND RIGHT SIDES OF THE RAMP ARE DETERMINED BY LOOKING AT THE RAMP FROM THE ROADWAY.



CONFORMED SET

PLOT DATE: 1/14/2010 12:44:57 PM USER: BRYANT REYES FILENAME: G:\clients\Cambridge MA\2008288 - CAM 400 Sewer Separation\Civil\Columbus Ave\2008288.03-Columbus curbing.dwg

SEA
SEA CONSULTANTS INC.
 Scientists/Engineers/Architects
 CAMBRIDGE, MASSACHUSETTS CONCORD, NEW HAMPSHIRE
 ROCKY HILL, CONNECTICUT AUGUSTA, MAINE
 FRAMINGHAM, MASSACHUSETTS

MWH
 BOSTON
 MASSACHUSETTS

VINCENT W. SPADA
 SANITARY
 No. 31436
 REGISTERED
 PROFESSIONAL ENGINEER

Scale	AS NOTED		
Date	JANUARY 15, 2010		
Job No.	2008288.03-A		
Designed by	TAL		
Drawn by	TAL		
Checked by	SFJ	No.	Description
Approved by	VWS		REVISIONS

THE WORKS
 CAMBRIDGE
 DEPARTMENT
 OF PUBLIC

Client	CITY OF CAMBRIDGE, MA		
Project	ALEWIFE BROOK FLOATABLES CONTROL (CONTRACT 4) AND CAM 400 SEWER SEPARATION PROJECT (CONTRACT 13)		
Drawing	COLUMBUS AVENUE - CURB TIE PLAN STA 3004+00 TO 3008+01		

Sheet	R-23
File No.	64 OF 102