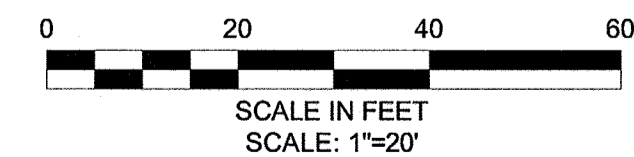


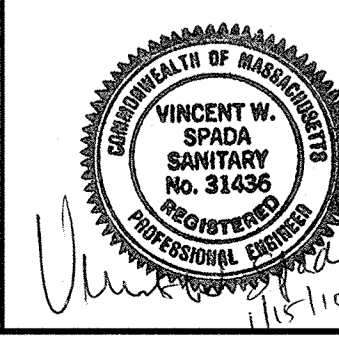
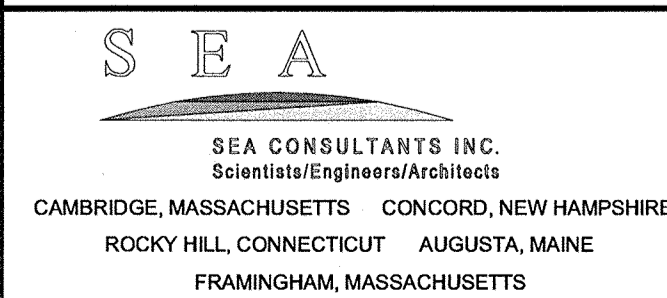
CONSTRUCTION NOTES:

1. WORK IN MADISON AVENUE SHALL MEET THE REQUIREMENTS OF THE CITY OF CAMBRIDGE DEPARTMENT OF PUBLIC WORKS.
2. SEE DETAIL SHEETS GC-8 AND GC-9 FOR CURB INSTALLATION, PEDESTRIAN RAMP AND SIDEWALK CONSTRUCTION DETAILS.
3. REFER TO DRAWINGS C-4 THRU C-7 FOR CONSTRUCTION BASELINE DRAWINGS.
4. CONTRACTOR SHALL ADJUST EXISTING UTILITY COVERS AND CASTINGS TO RE-GRADED SURFACES AT NO ADDITIONAL COST TO OWNER. THE CONTRACTOR SHALL COORDINATE WITH RESPECTIVE UTILITY COMPANIES FOR GAS/TELECOM/CABLE/ELECTRIC.
5. ALL VERTICAL GRANITE CURBING WITHIN SIDEWALK AND PULVERIZE LIMITS SHALL BE REMOVED AND RESET UNLESS OTHERWISE NOTED.
6. CONTRACTOR TO ADJUST TREE PIT OPENINGS AS NECESSARY TO MAINTAIN A MINIMUM 3'-0" WIDE SIDEWALK BETWEEN TREE PIT AND BACK OF SIDEWALK.
7. CONTRACTOR SHALL MAINTAIN A MINIMUM DISTANCE OF 3'-0" FROM THE BACK OF SIDEWALK TO ANY OBJECT INCLUDING BUT NOT LIMITED TO; SIGN POSTS, HYDRANTS AND UTILITY, AND LIGHT POLES.
8. ALL SIGN POSTS WITHIN PROJECT AREA TO BE REPLACED AND EXISTING SIGN TO BE RESET. EXISTING SIGNS LOCATED WITHIN PROPOSED PEDESTRIAN RAMPS SHALL BE RELOCATED OUTSIDE OF PEDESTRIAN RAMPS.
9. TREES TO REMAIN SHALL BE PROTECTED THROUGHOUT CONSTRUCTION.
10. GRADING AT THE BACK OF SIDEWALK AT DRIVEWAYS SHALL TIE INTO EXISTING DRIVEWAY GRADES WITH A SLOPE NOT TO EXCEED 12%.



CONFORMED SET

PLOT DATE: 1/14/2010 1:02:19 PM USER: BRYANT REYES FILENAME: G:\clients\Cambridge MA\2008288 - CAM 400 Sewer Separation\Civil\Madison Ave\2008288.03-Madison const.dwg

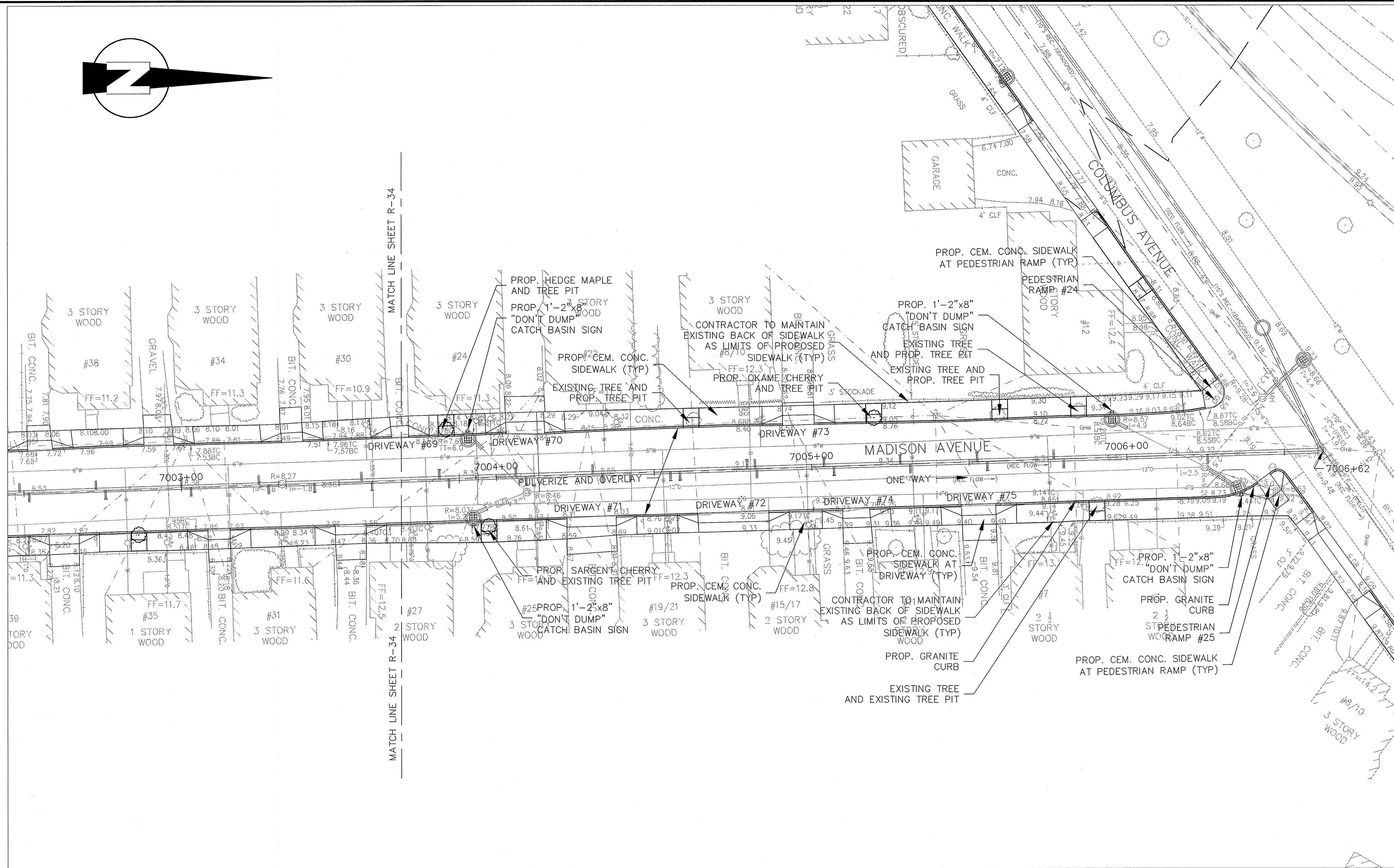
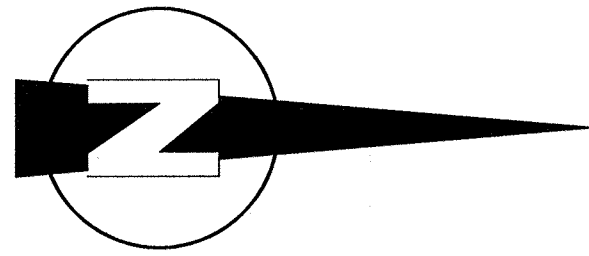


Scale	AS NOTED			
Date	JANUARY 15, 2010			
Job No.	2008288.03-A			
Designed by	MEJ			
Drawn by	MEJ			
Checked by	SFJ	No.	Description	Date
Approved by	VWS		REVISIONS	

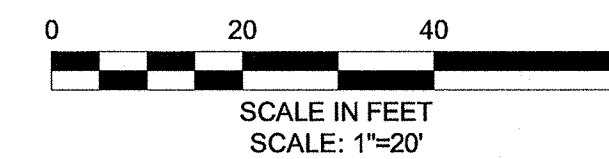


Client	CITY OF CAMBRIDGE, MA
Project	ALEWIFE BROOK FLOATABLES CONTROL (CONTRACT 4) AND CAM 400 SEWER SEPARATION PROJECT (CONTRACT 13)
Drawing	MADISON AVENUE - CONSTRUCTION PLAN STA 7000+00 TO 7003+50

Sheet	R-34
File No.	75 OF 102



- CONSTRUCTION NOTES:**
1. WORK IN MADISON AVENUE SHALL MEET THE REQUIREMENTS OF THE CITY OF CAMBRIDGE DEPARTMENT OF PUBLIC WORKS.
 2. SEE DETAIL SHEETS GC-8 AND GC-9 FOR CURB INSTALLATION, PEDESTRIAN RAMP AND SIDEWALK CONSTRUCTION DETAILS.
 3. REFER TO DRAWINGS G-4 THRU G-7 FOR CONSTRUCTION BASELINE DRAWINGS.
 4. CONTRACTOR SHALL ADJUST EXISTING UTILITY COVERS AND CASTINGS TO RE-GRADED SURFACES AT NO ADDITIONAL COST TO OWNER. THE CONTRACTOR SHALL COORDINATE WITH RESPECTIVE UTILITY COMPANIES FOR GAS/TELECOM/CABLE/ELECTRIC.
 5. ALL VERTICAL GRANITE CURBING WITHIN SIDEWALK AND PULVERIZING LIMITS SHALL BE REMOVED AND RESET UNLESS OTHERWISE NOTED.
 6. CONTRACTOR TO ADJUST TREE PIT OPENINGS AS NECESSARY TO MAINTAIN A MINIMUM 3'-0" WIDE SIDEWALK BETWEEN TREE PIT AND BACK OF SIDEWALK.
 7. CONTRACTOR SHALL MAINTAIN A MINIMUM DISTANCE OF 3'-0" FROM THE BACK OF SIDEWALK TO ANY OBJECT INCLUDING BUT NOT LIMITED TO; SIGN POSTS, HYDRANTS AND UTILITY, AND LIGHT POLES.
 8. ALL SIGN POSTS WITHIN PROJECT AREA TO BE REPLACED AND EXISTING SIGN TO BE RESET. EXISTING SIGNS LOCATED WITHIN PROPOSED PEDESTRIAN RAMPS SHALL BE RELOCATED OUTSIDE OF PEDESTRIAN RAMPS.
 9. TREES TO REMAIN SHALL BE PROTECTED THROUGHOUT CONSTRUCTION.
 10. GRADING AT THE BACK OF SIDEWALK AT DRIVEWAYS SHALL TIE INTO EXISTING DRIVEWAY GRADES WITH A SLOPE NOT TO EXCEED 12%.

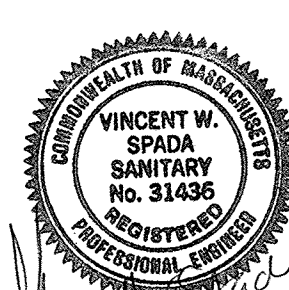


CONFORMED SET

PLOT DATE=1/14/2010 1:02:41 PM USER=BRVANT REVES FILENAME=C:_clients\Cambridge\MA\2008288-03-CAM 400 Sewer Separation\Civil\Madison Ave\2008288-03-Madison const.dwg

SEA
SEA CONSULTANTS INC.
Scientists/Engineers/Architects
CAMBRIDGE, MASSACHUSETTS CONCORD, NEW HAMPSHIRE
ROCKY HILL, CONNECTICUT AUGUSTA, MAINE
FRAMINGHAM, MASSACHUSETTS

MWH
BOSTON
MASSACHUSETTS



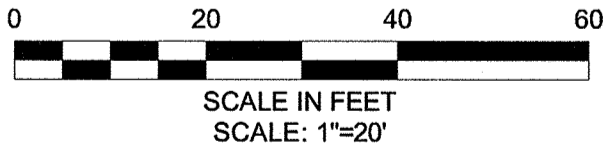
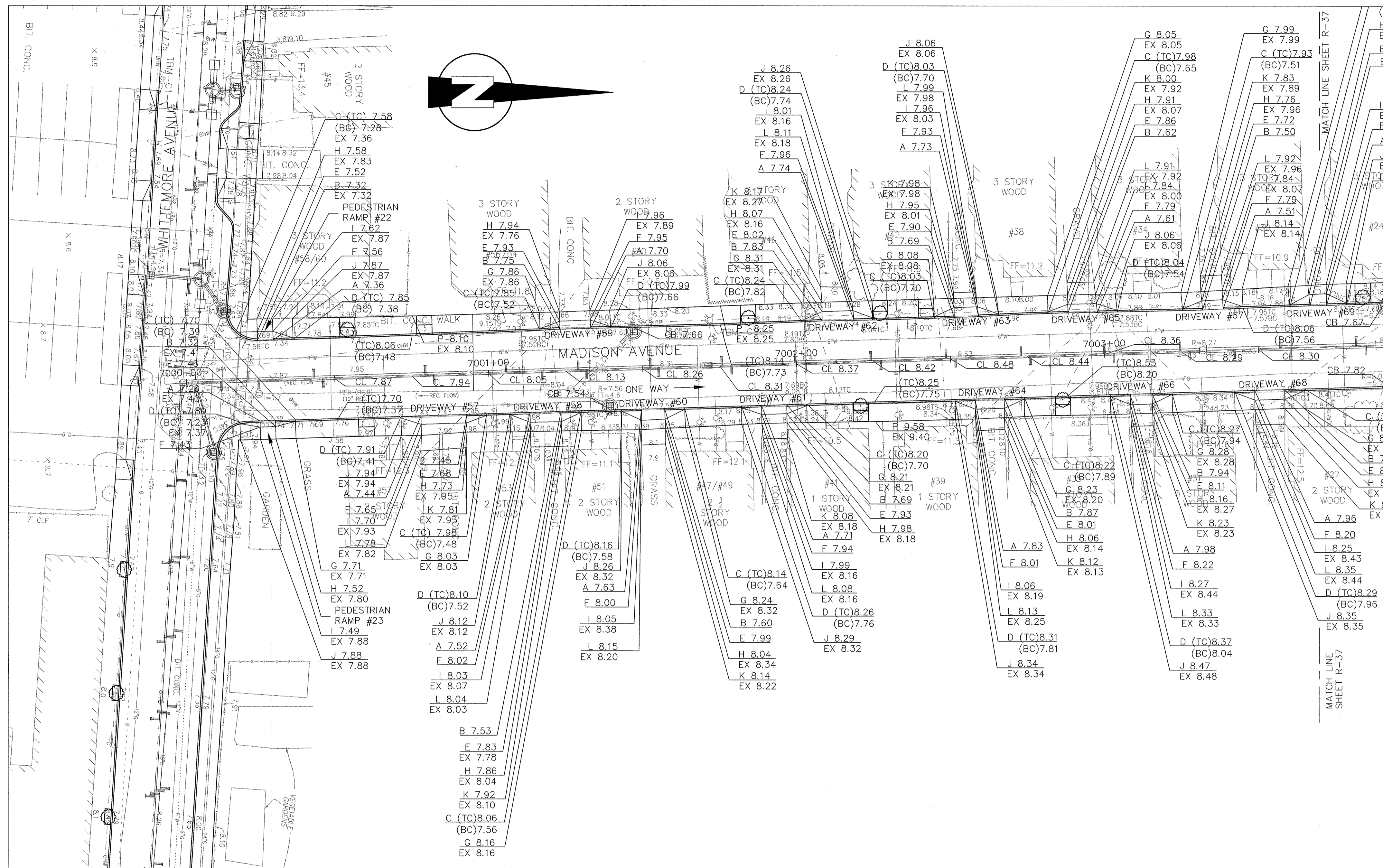
Scale	AS NOTED		
Date	JANUARY 15, 2010		
Job No.	2008288.03-A		
Designed by	MEJ		
Drawn by	MEJ		
Checked by	SFJ	No.	Description
Approved by	VWS		Date



Client	CITY OF CAMBRIDGE, MA
Project	ALEWIFE BROOK FLOTTABLES CONTROL (CONTRACT 4) AND CAM 400 SEWER SEPARATION PROJECT (CONTRACT 13)
Drawing	MADISON AVENUE - CONSTRUCTION PLAN STA 7003+50 TO 7006+62

Sheet	R-35
File No.	78 OF 102

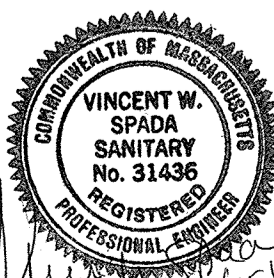
PLOT DATE: 11/14/2010 1:03:17 PM USER: BRYANT REYES FILENAME: G:\clients\Cambridge MA\2008288-03-CAM 400 Sewer Separation\Civil\Madison Ave\2008288-03-Madison grading.dwg



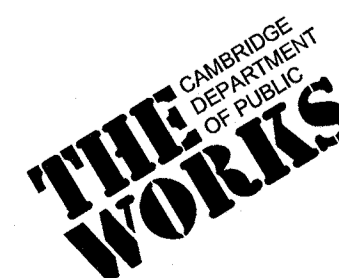
CONFORMED SET

SEA
SEA CONSULTANTS INC.
Scientists/Engineers/Architects
CAMBRIDGE, MASSACHUSETTS CONCORD, NEW HAMPSHIRE
ROCKY HILL, CONNECTICUT AUGUSTA, MAINE
FRAMINGHAM, MASSACHUSETTS

MWH
BOSTON
MASSACHUSETTS



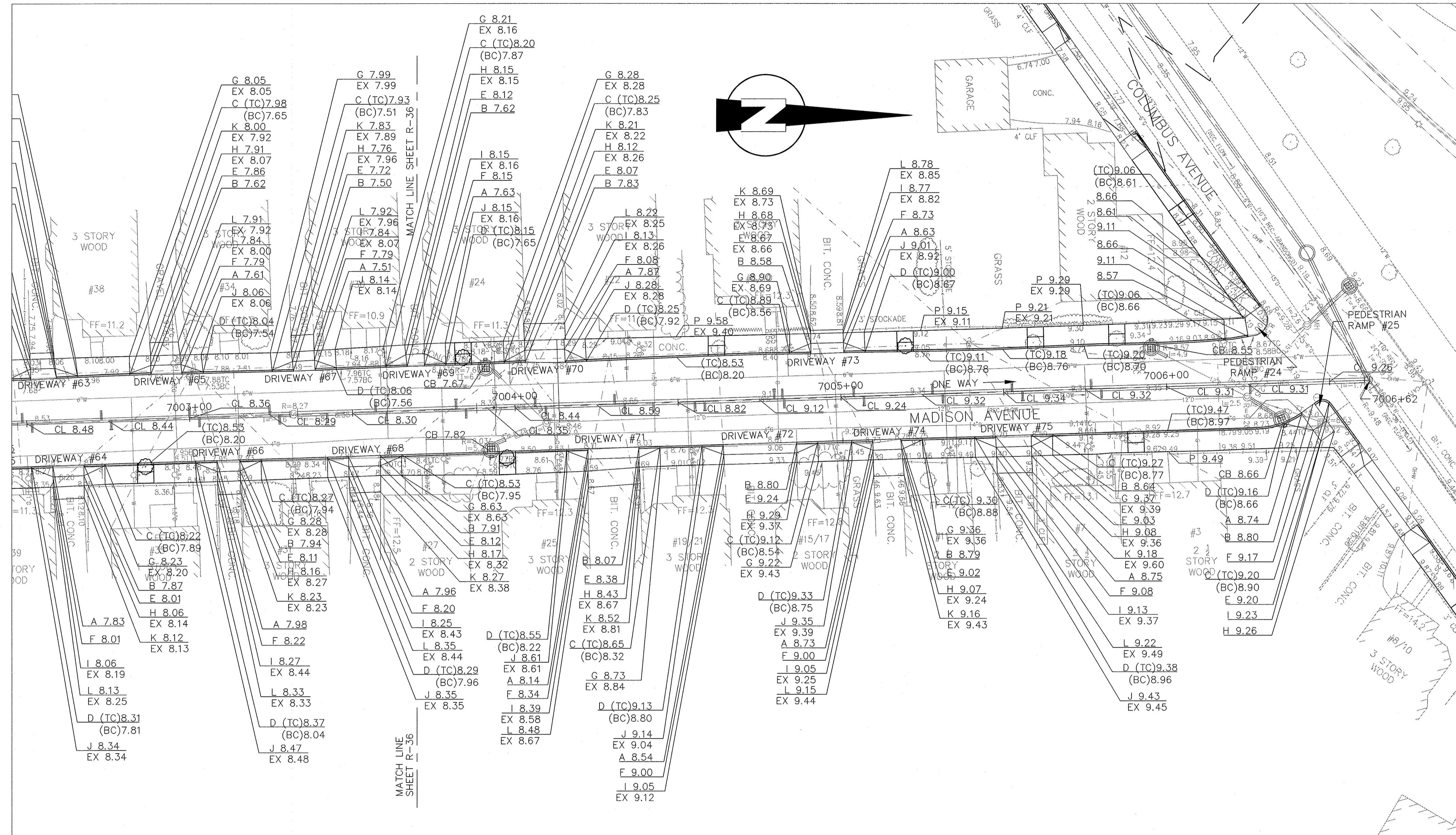
Scale	AS NOTED		
Date	JANUARY 15, 2010		
Job No.	2008288-03-A		
Designed by	MEJ		
Drawn by	MEJ		
Checked by	SJF	No.	Description
Approved by	VWS		Date



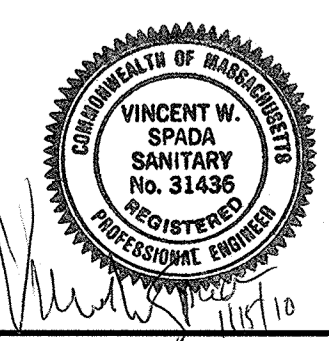
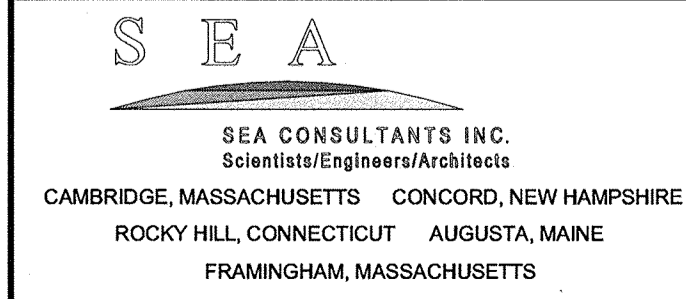
Client	CITY OF CAMBRIDGE, MA
Project	ALEWIFE BROOK FLOATABLES CONTROL (CONTRACT 4) AND CAM 400 SEWER SEPARATION PROJECT (CONTRACT 13)
Drawing	MADISON AVENUE - GRADING PLAN STA 7000+00 TO 7003+50

Sheet	R-36
File No.	77 OF 102

PLOT DATE: 1/14/2010 1:03:41 PM USER: BRYANT REYES FILENAME: G:_clients\Cambridge MA\2008288 - CAM 400 Sewer Separation\Civil\Madison Ave\2008288.03-Madison grading.dwg



CONFORMED SET

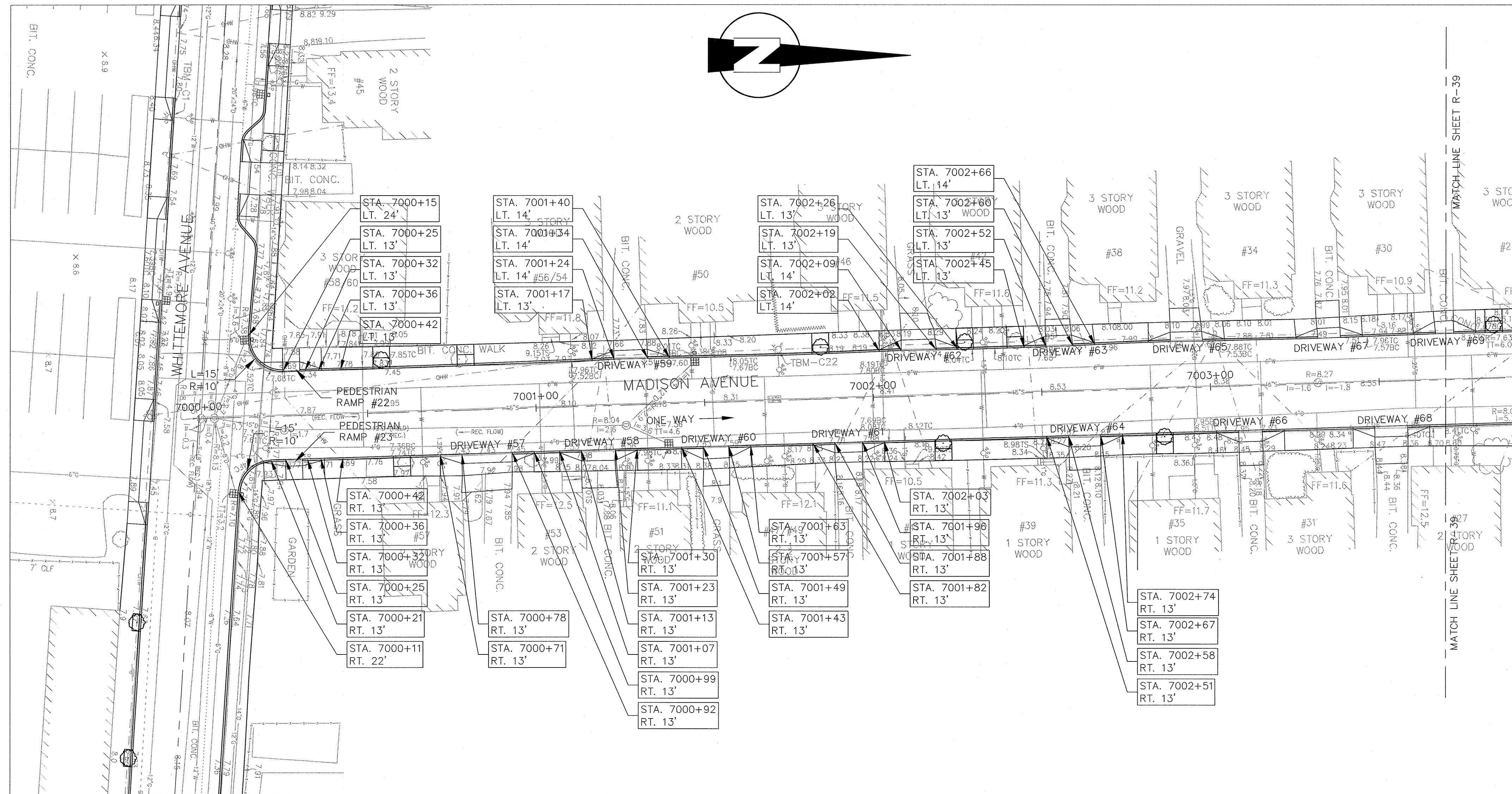


Scale	AS NOTED
Date	JANUARY 15, 2010
Job No.	2008288.03-A
Designed by	MEJ
Drawn by	MEJ
Checked by	SFJ
Approved by	VWS
No.	
Description	
Date	



Client	CITY OF CAMBRIDGE, MA
Project	ALEWIFE BROOK FLOATABLES CONTROL (CONTRACT 4) AND CAM 400 SEWER SEPARATION PROJECT (CONTRACT 13)
Drawing	MADISON AVENUE - GRADING PLAN STA 7003+50 TO 7006+62

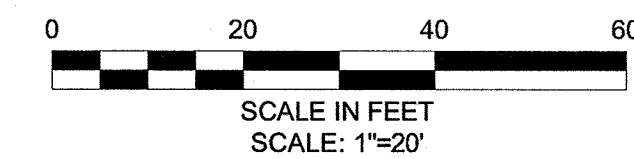
Sheet	R-37
File No.	78 OF 102



PLOT DATE=1/14/2010 1:04:13 PM USER=BRYANT REYES FILENAME=G:\Clients\Cambridge MA\2008288 - CAM 400 Sewer Separation\Civil\Madison Ave\2008288.03-Madison curb.tie.dwg

DW #	RAMP REFERENCE POINT		WIDTH OF SIDEWALK, W (FT)	WIDTH OF OPENING (FT)	TRANSITION LENGTH	
	STATION	OFFSET			*LEFT SIDE	*RIGHT SIDE
57	7000+85	RT	6.0	14.8	6'-6"	6'-6"
58	7001+18	RT	6.0	10.1	6'-6"	6'-6"
59	7001+29	LT	5.7	10.0	6'-6"	6'-6"
60	7001+53	RT	6.5	7.5	6'-6"	6'-6"
51	7001+92	RT	6.0	8.2	6'-6"	6'-6"
62	7002+14	LT	6.1	10.3	6'-6"	6'-6"
63	7002+56	LT	6.0	7.9	6'-6"	6'-6"
64	7002+62	RT	6.3	9.5	6'-6"	6'-6"

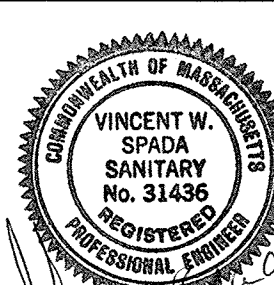
NOTE:
1. LEFT AND RIGHT SIDES OF THE RAMP ARE DETERMINED BY LOOKING AT THE RAMP FROM THE ROADWAY.



CONFORMED SET

SEA
SEA CONSULTANTS INC.
Scientists/Engineers/Architects
CAMBRIDGE, MASSACHUSETTS CONCORD, NEW HAMPSHIRE
ROCKY HILL, CONNECTICUT AUGUSTA, MAINE
FRAMINGHAM, MASSACHUSETTS

MWH
BOSTON
MASSACHUSETTS

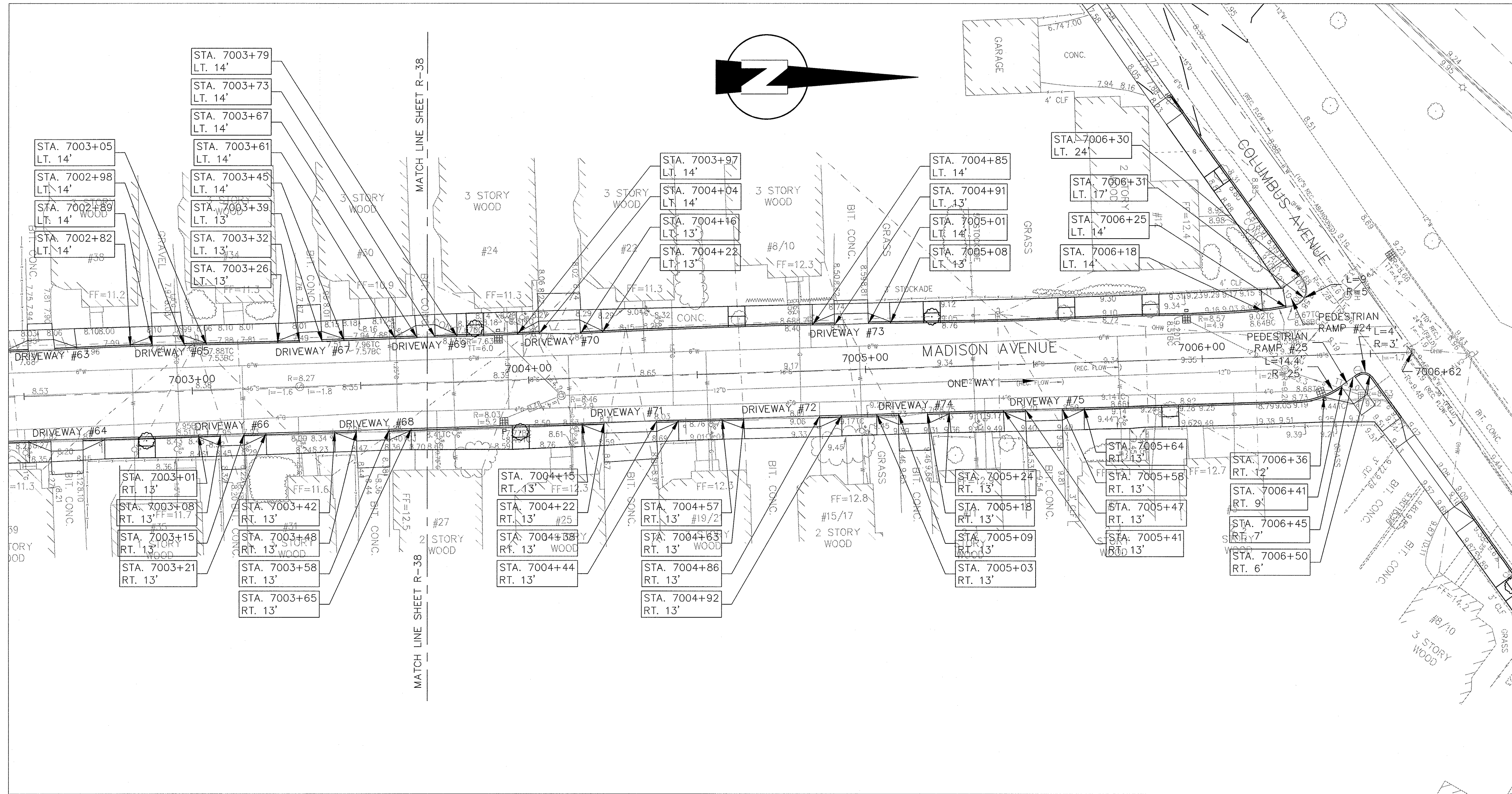


Scale	AS NOTED		
Date	JANUARY 15, 2010		
Job No.	2008288.03-A		
Designed by	MEJ		
Drawn by	MEJ		
Checked by	SFJ	No.	Description
Approved by	VWS		Date



Client	CITY OF CAMBRIDGE, MA
Project	ALEWIFE BROOK FLOATABLES CONTROL (CONTRACT 4) AND CAM 400 SEWER SEPARATION PROJECT (CONTRACT 13)
Drawing	MADISON AVENUE - CURB TIE PLAN STA 7000+00 TO 7003+50

Sheet	R-38
File No.	79 OF 102

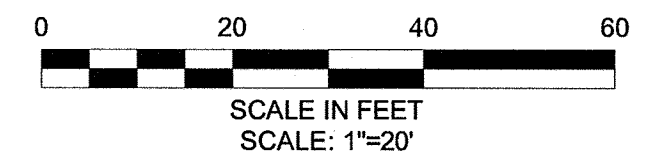


DW #	RAMP REFERENCE POINT		WIDTH OF SIDEWALK, W (FT)	WIDTH OF OPENING (FT)	TRANSITION LENGTH	
	STATION	OFFSET			*LEFT SIDE	*RIGHT SIDE
65	7002+94	LT	5.8	9.5	6'-6"	6'-6"
66	7003+11	RT	6.4	7.1	6'-6"	6'-6"
67	7003+36	LT	6.0	6.7	6'-6"	6'-6"
68	7003+53	RT	6.2	9.7	6'-6"	6'-6"
69	7003+70	LT	6.6	5.4	6'-6"	6'-6"
70	7004+10	LT	6.7	12.2	6'-6"	6'-6"

DW #	RAMP REFERENCE POINT		WIDTH OF SIDEWALK, W (FT)	WIDTH OF OPENING (FT)	TRANSITION LENGTH	
	STATION	OFFSET			*LEFT SIDE	*RIGHT SIDE
71	7004+30	RT	6.0	15.6	6'-6"	6'-6"
72	7004+751	RT	6.0	22.5	6'-6"	6'-6"
73	7004+97	LT	6.1	10.1	6'-6"	6'-6"
74	7005+14	RT	6.0	8.5	6'-6"	6'-6"
75	7005+53	RT	6.3	11.0	6'-6"	6'-6"

NOTE:

- LEFT AND RIGHT SIDES OF THE RAMP ARE DETERMINED BY LOOKING AT THE RAMP FROM THE ROADWAY.



CONFORMED SET

PLOT DATE=1/14/2010 1:04:33 PM USER=BRYANT REYES FILENAME=G:\clients\Cambridge MA\2008288 - CAM 400 Sewer Separation\Civil\Madison Ave\2008288.03-Madison curbings.dwg

SEA
SEA CONSULTANTS INC.
Scientists/Engineers/Architects
CAMBRIDGE, MASSACHUSETTS CONCORD, NEW HAMPSHIRE
ROCKY HILL, CONNECTICUT AUGUSTA, MAINE
FRAMINGHAM, MASSACHUSETTS

MWH
BOSTON
MASSACHUSETTS

VINCENT W. SPADA
SPADA
SANITARY
No. 31436
PROFESSIONAL ENGINEER

Scale	AS NOTED		
Date	JANUARY 15, 2010		
Job No.	2008288.03-A		
Designed by	MEJ		
Drawn by	MEJ		
Checked by	SFJ	No.	Description
Approved by	VWS		REVISIONS

THE WORKS
CAMBRIDGE
DEPARTMENT
OF PUBLIC
WORKS

Client	CITY OF CAMBRIDGE, MA
Project	ALEWIFE BROOK FLOATABLES CONTROL (CONTRACT 4) AND CAM 400 SEWER SEPARATION PROJECT (CONTRACT 13)
Drawing	MADISON AVENUE - CURB TIE PLAN STA 7003+50 TO 7006+62

Sheet	R-39
File No.	80 OF 102