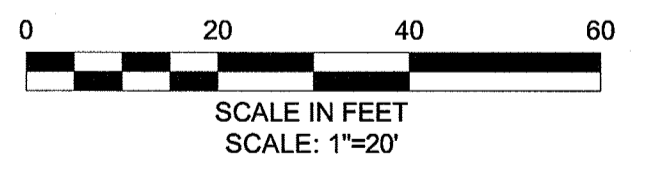


- CONSTRUCTION NOTES:**
1. WORK IN MAGOUN STREET SHALL MEET THE REQUIREMENTS OF THE CITY OF CAMBRIDGE DEPARTMENT OF PUBLIC WORKS.
 2. SEE DETAIL SHEETS GC-8 AND GC-9 FOR CURB INSTALLATION, PEDESTRIAN RAMP AND SIDEWALK CONSTRUCTION DETAILS.
 3. REFER TO DRAWINGS G-4 THRU G-7 FOR CONSTRUCTION BASELINE DRAWINGS.
 4. CONTRACTOR SHALL ADJUST EXISTING UTILITY COVERS AND CASTINGS TO RE-GRADED SURFACES AT NO ADDITIONAL COST TO OWNER. THE CONTRACTOR SHALL COORDINATE WITH RESPECTIVE UTILITY COMPANIES FOR GAS/TELECOM/CABLE/ELECTRIC.
 5. ALL VERTICAL GRANITE CURBING WITHIN SIDEWALK AND PULVERIZING LIMITS SHALL BE REMOVED AND RESET UNLESS OTHERWISE NOTED.
 6. CONTRACTOR TO ADJUST TREE PIT OPENINGS AS NECESSARY TO MAINTAIN A MINIMUM 3'-0" WIDE SIDEWALK BETWEEN TREE PIT AND BACK OF SIDEWALK.
 7. CONTRACTOR SHALL MAINTAIN A MINIMUM DISTANCE OF 3'-0" FROM THE BACK OF SIDEWALK TO ANY OBJECT INCLUDING BUT NOT LIMITED TO; SIGN POSTS, HYDRANTS AND UTILITY, AND LIGHT POLES.
 8. ALL SIGN POSTS WITHIN PROJECT AREA TO BE REPLACED AND EXISTING SIGN TO BE RESET. EXISTING SIGNS LOCATED WITHIN PROPOSED PEDESTRIAN RAMPS SHALL BE RELOCATED OUTSIDE OF PEDESTRIAN RAMPS.
 9. TREES TO REMAIN SHALL BE PROTECTED THROUGHOUT CONSTRUCTION.
 10. GRADING AT THE BACK OF SIDEWALK AT DRIVEWAYS SHALL TIE INTO EXISTING DRIVEWAY GRADES WITH A SLOPE NOT TO EXCEED 12%.

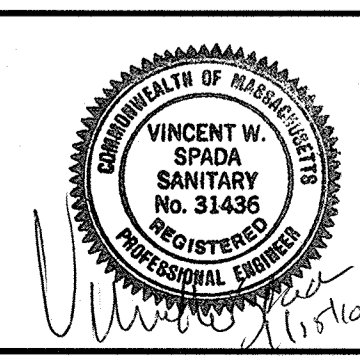


CONFORMED SET

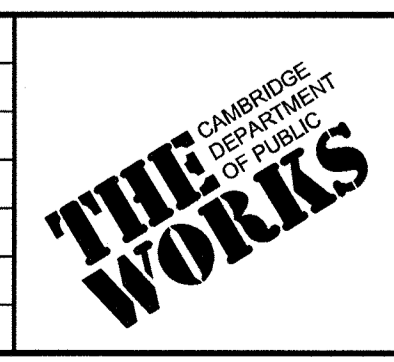
PLOT DATE: 1/14/2010 1:05:06 PM USER: BRYANT REYES FILENAME: C:\clients\Cambridge MA\2008288- CAM 400 Sewer Separation\Civil\Magoun STA2008288.03-Magoun const.dwg

SEA
SEA CONSULTANTS INC.
Scientists/Engineers/Architects
CAMBRIDGE, MASSACHUSETTS CONCORD, NEW HAMPSHIRE
ROCKY HILL, CONNECTICUT AUGUSTA, MAINE
FRAMINGHAM, MASSACHUSETTS

MWH
BOSTON
MASSACHUSETTS

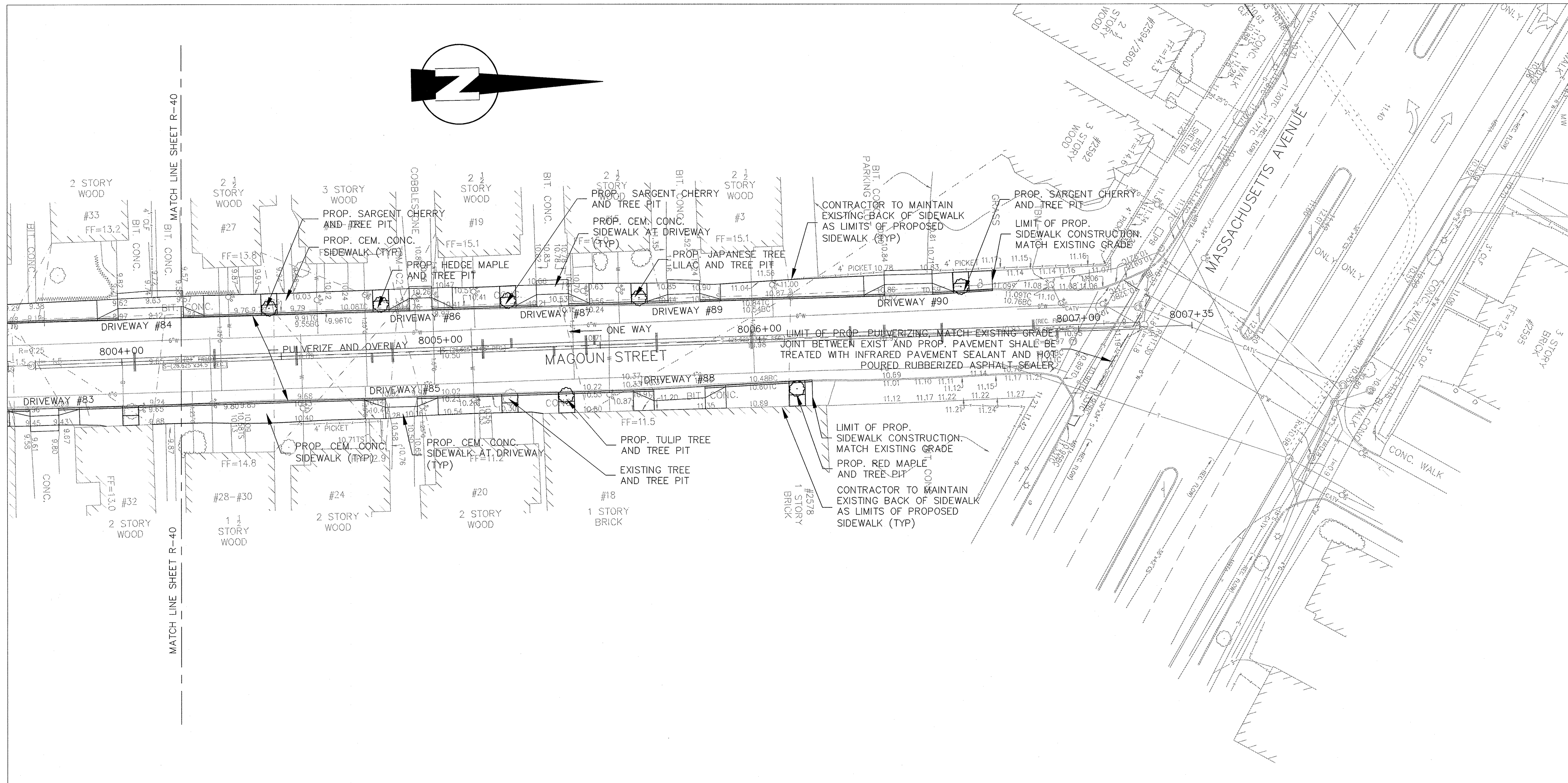


Scale	AS NOTED		
Date	JANUARY 15, 2010		
Job No.	2008288.03-A		
Designed by	JRM		
Drawn by	JRM		
Checked by	SFJ	No.	Description
Approved by	VWS		Date
REVISIONS			

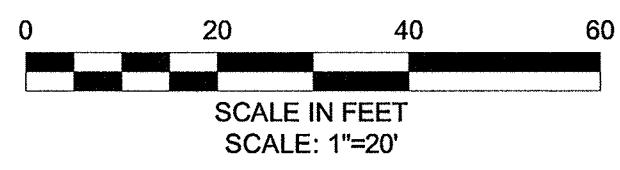


Client	CITY OF CAMBRIDGE, MA
Project	ALEWIFE BROOK FLOATABLES CONTROL (CONTRACT 4) AND CAM 400 SEWER SEPARATION PROJECT (CONTRACT 13)
Drawing	MAGOUN STREET - CONSTRUCTION PLAN STA 8000+00 TO 8004+50

Sheet	R-40
File No.	81 OF 102



- CONSTRUCTION NOTES:**
1. WORK IN MAGOUN STREET SHALL MEET THE REQUIREMENTS OF THE CITY OF CAMBRIDGE DEPARTMENT OF PUBLIC WORKS.
 2. SEE DETAIL SHEETS GC-8 AND GC-9 FOR CURB INSTALLATION, PEDESTRIAN RAMP AND SIDEWALK CONSTRUCTION DETAILS.
 3. REFER TO DRAWINGS G-4 THRU G-7 FOR CONSTRUCTION BASELINE DRAWINGS.
 4. CONTRACTOR SHALL ADJUST EXISTING UTILITY COVERS AND CASTINGS TO RE-GRADED SURFACES AT NO ADDITIONAL COST TO OWNER. THE CONTRACTOR SHALL COORDINATE WITH RESPECTIVE UTILITY COMPANIES FOR GAS/TELECOM/CABLE/ELECTRIC.
 5. ALL VERTICAL GRANITE CURBING WITHIN SIDEWALK AND PULVERIZING LIMITS SHALL BE REMOVED AND RESET UNLESS OTHERWISE NOTED.
 6. CONTRACTOR TO ADJUST TREE PIT OPENINGS AS NECESSARY TO MAINTAIN A MINIMUM 3'-0" WIDE SIDEWALK BETWEEN TREE PIT AND BACK OF SIDEWALK.
 7. CONTRACTOR SHALL MAINTAIN A MINIMUM DISTANCE OF 3'-0" FROM THE BACK OF SIDEWALK TO ANY OBJECT INCLUDING BUT NOT LIMITED TO; SIGN POSTS, HYDRANTS AND UTILITY, AND LIGHT POLES.
 8. ALL SIGN POSTS WITHIN PROJECT AREA TO BE REPLACED AND EXISTING SIGN TO BE RESET. EXISTING SIGNS LOCATED WITHIN PROPOSED PEDESTRIAN RAMPS SHALL BE RELOCATED OUTSIDE OF PEDESTRIAN RAMPS.
 9. TREES TO REMAIN SHALL BE PROTECTED THROUGHOUT CONSTRUCTION.
 10. GRADING AT THE BACK OF SIDEWALK AT DRIVEWAYS SHALL TIE INTO EXISTING DRIVEWAY GRADES WITH A SLOPE NOT TO EXCEED 12%.



CONFORMED SET

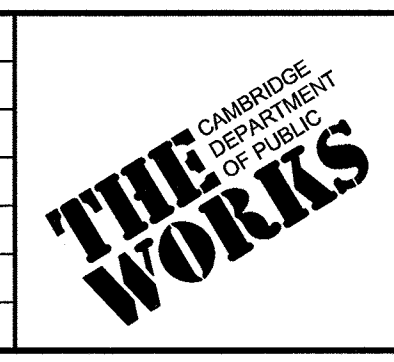
PLOT DATE: 1/14/2010 1:02:27 PM USER: BRYANT REYES FILENAME: G:\clients\Cambridge MA\2008288 - CAM 400 Sewer Separation\Civil\Magoun STA 8004+50-Magoun const.dwg

SEA
 SEA CONSULTANTS INC.
 Scientists/Engineers/Architects
 CAMBRIDGE, MASSACHUSETTS CONCORD, NEW HAMPSHIRE
 ROCKY HILL, CONNECTICUT AUGUSTA, MAINE
 FRAMINGHAM, MASSACHUSETTS

MWH
 BOSTON
 MASSACHUSETTS

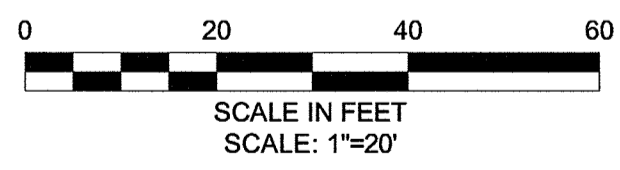
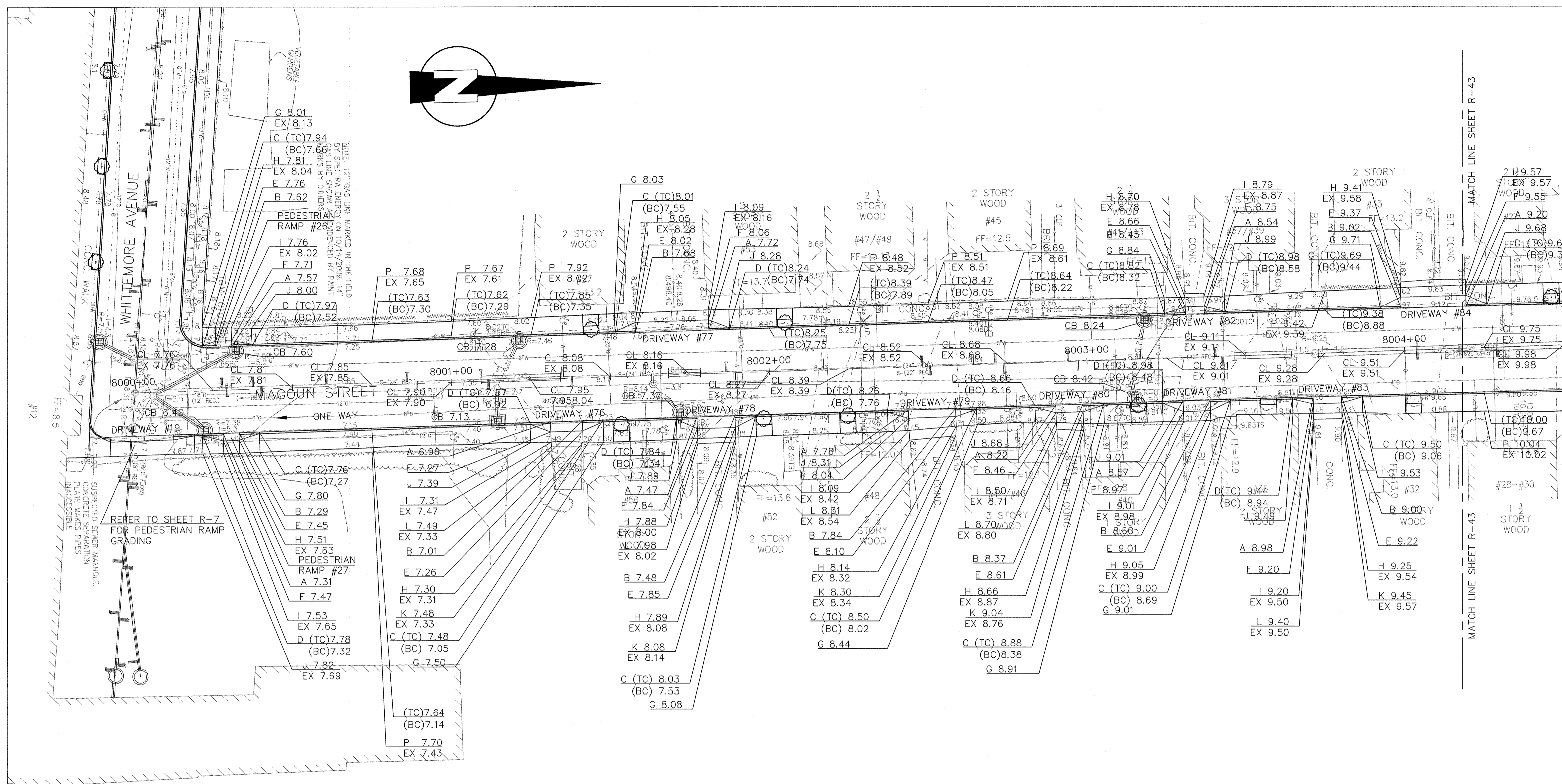
VINCENT W. SPADA
 SANITARY
 No. 31436
 REGISTERED PROFESSIONAL ENGINEER

Scale	AS NOTED			
Date	JANUARY 15, 2010			
Job No.	2008288.03-A			
Designed by	JRM			
Drawn by	JRM			
Checked by	SFJ	No.	Description	Date
Approved by	VWS		REVISIONS	



Client	CITY OF CAMBRIDGE, MA
Project	ALEWIFE BROOK FLOATABLES CONTROL (CONTRACT 4) AND CAM 400 SEWER SEPARATION PROJECT (CONTRACT 13)
Drawing	MAGOUN STREET - CONSTRUCTION PLAN STA 8004+50 TO 8007+35

Sheet	R-41
File No.	82 OF 102

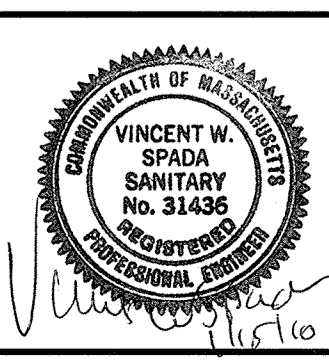


CONFORMED SET

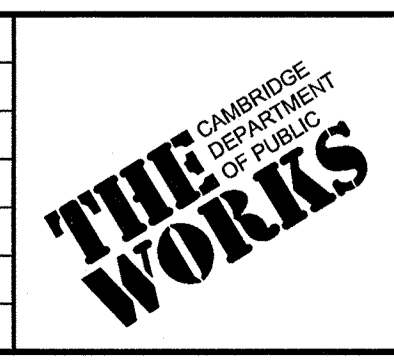
PLOT DATE=1/14/2010 1:06:53 PM USER=BRYANT REYES FILENAME=C:_clients\Cambridge MA\2008288 - CAM 400 Sewer Separation\Civil\Magoun St\2008288.03-Magoun grading.dwg

SEA
SEA CONSULTANTS INC.
Scientists/Engineers/Architects
CAMBRIDGE, MASSACHUSETTS CONCORD, NEW HAMPSHIRE
ROCKY HILL, CONNECTICUT AUGUSTA, MAINE
FRAMINGHAM, MASSACHUSETTS

MWH
BOSTON
MASSACHUSETTS

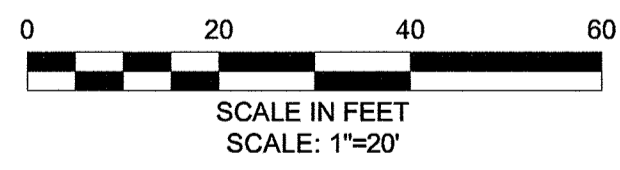
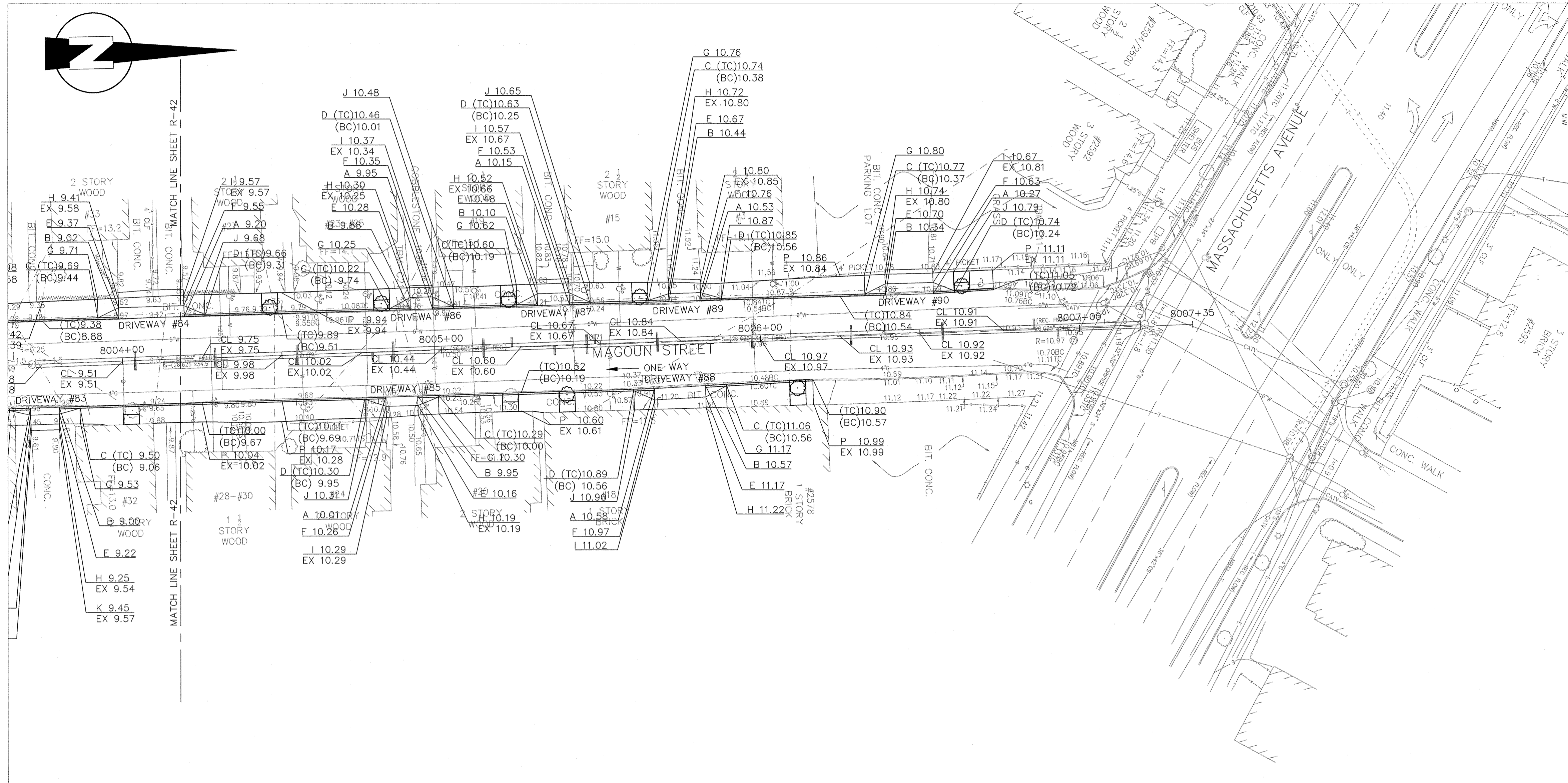


Scale	AS NOTED			
Date	JANUARY 15, 2010			
Job No.	2008288.03-A			
Designed by	JRM			
Drawn by	JRM			
Checked by	SFJ	No.	Description	Date
Approved by	VWS		REVISIONS	



Client	CITY OF CAMBRIDGE, MA
Project	ALEWIFE BROOK FLOATABLES CONTROL (CONTRACT 4) AND CAM 400 SEWER SEPARATION PROJECT (CONTRACT 13)
Drawing	MAGOUN STREET - GRADING PLAN STA 8000+00 TO 8004+00

Sheet	R-42
File No.	83 OF 102



CONFORMED SET

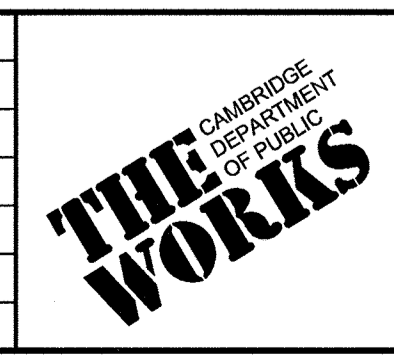
PLOT DATE: 1/14/2010 1:07:12 PM USER: BRYANT REYES FILENAME: G:_clients\Cambridge MA\2008288- CAM 400 Sewer Separation\Civil\Magoun Street\2008288.03-Magoun grading.dwg

SEA
 SEA CONSULTANTS INC.
 Scientists/Engineers/Architects
 CAMBRIDGE, MASSACHUSETTS CONCORD, NEW HAMPSHIRE
 ROCKY HILL, CONNECTICUT AUGUSTA, MAINE
 FRAMINGHAM, MASSACHUSETTS

MWH
 BOSTON
 MASSACHUSETTS

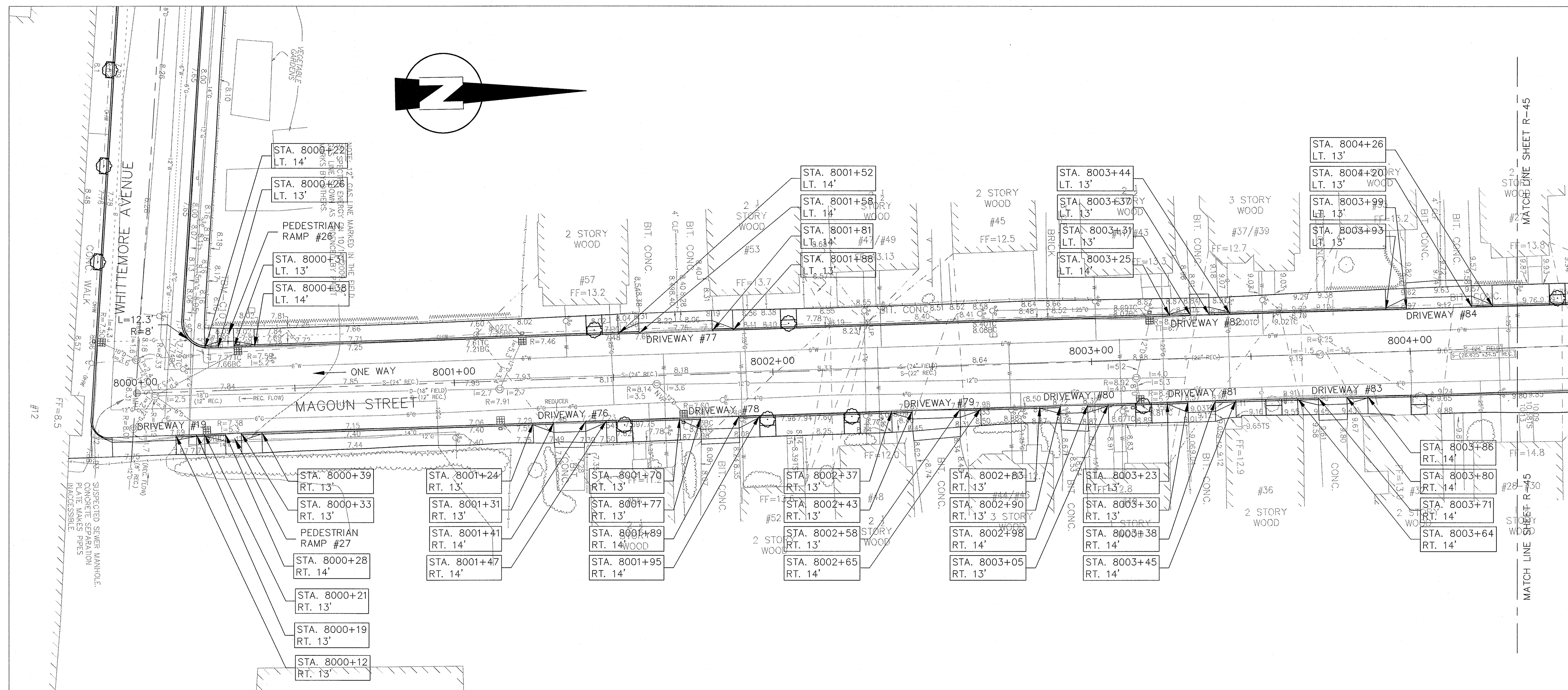
COMMONWEALTH OF MASSACHUSETTS
 VINCENT W. SPADA
 SANITARY
 No. 31436
 REGISTERED PROFESSIONAL ENGINEER

Scale	AS NOTED			
Date	JANUARY 15, 2010			
Job No.	2008288.03-A			
Designed by	JRM			
Drawn by	JRM			
Checked by	SFJ	No.	Description	Date
Approved by	VWS		REVISIONS	



Client	CITY OF CAMBRIDGE, MA
Project	ALEWIFE BROOK FLOATABLES CONTROL (CONTRACT 4) AND CAM 400 SEWER SEPARATION PROJECT (CONTRACT 13)
Drawing	MAGOUN STREET - GRADING PLAN STA 8004+00 TO 8007+35

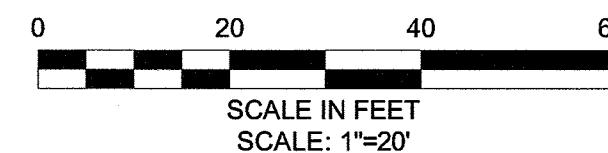
Sheet	R-43
File No.	84 OF 102



DW #	RAMP REFERENCE POINT		WIDTH OF SIDEWALK, W (FT)	WIDTH OF OPENING (FT)	TRANSITION LENGTH	
	STATION	OFFSET			*LEFT SIDE	*RIGHT SIDE
19	800+04	RT	6.0	20.0	6'-6"	6'-6"
76	8001+36	RT	6.2	10.0	6'-6"	6'-6"
77	8001+70	LT	6.2	23.0	6'-6"	6'-6"
78	8001+83	RT	6.7	12.0	6'-6"	6'-6"
79	8002+51	RT	6.0	15.0	6'-6"	6'-6"
80	8002+94	RT	5.7	8.5	6'-6"	6'-6"
81	8003+34	RT	6.2	8.5	6'-6"	6'-6"
82	8003+34	LT	5.3	6.0	6'-6"	6'-6"
83	8003+75	RT	5.2	9.0	6'-6"	6'-6"

NOTE:

1. LEFT AND RIGHT SIDES OF THE RAMP ARE DETERMINED BY LOOKING AT THE RAMP FROM THE ROADWAY.



CONFORMED SET

PLOT DATE: 1/14/2010 1:09:05 PM USER: BRYANT REYES FILENAME: G:\clients\cambridge\civil\magoun\slu2008288.03-magoun curbing.dwg

SEA
SEA CONSULTANTS INC.
Scientists/Engineers/Architects
CAMBRIDGE, MASSACHUSETTS CONCORD, NEW HAMPSHIRE
ROCKY HILL, CONNECTICUT AUGUSTA, MAINE
FRAMINGHAM, MASSACHUSETTS

MWH
BOSTON
MASSACHUSETTS

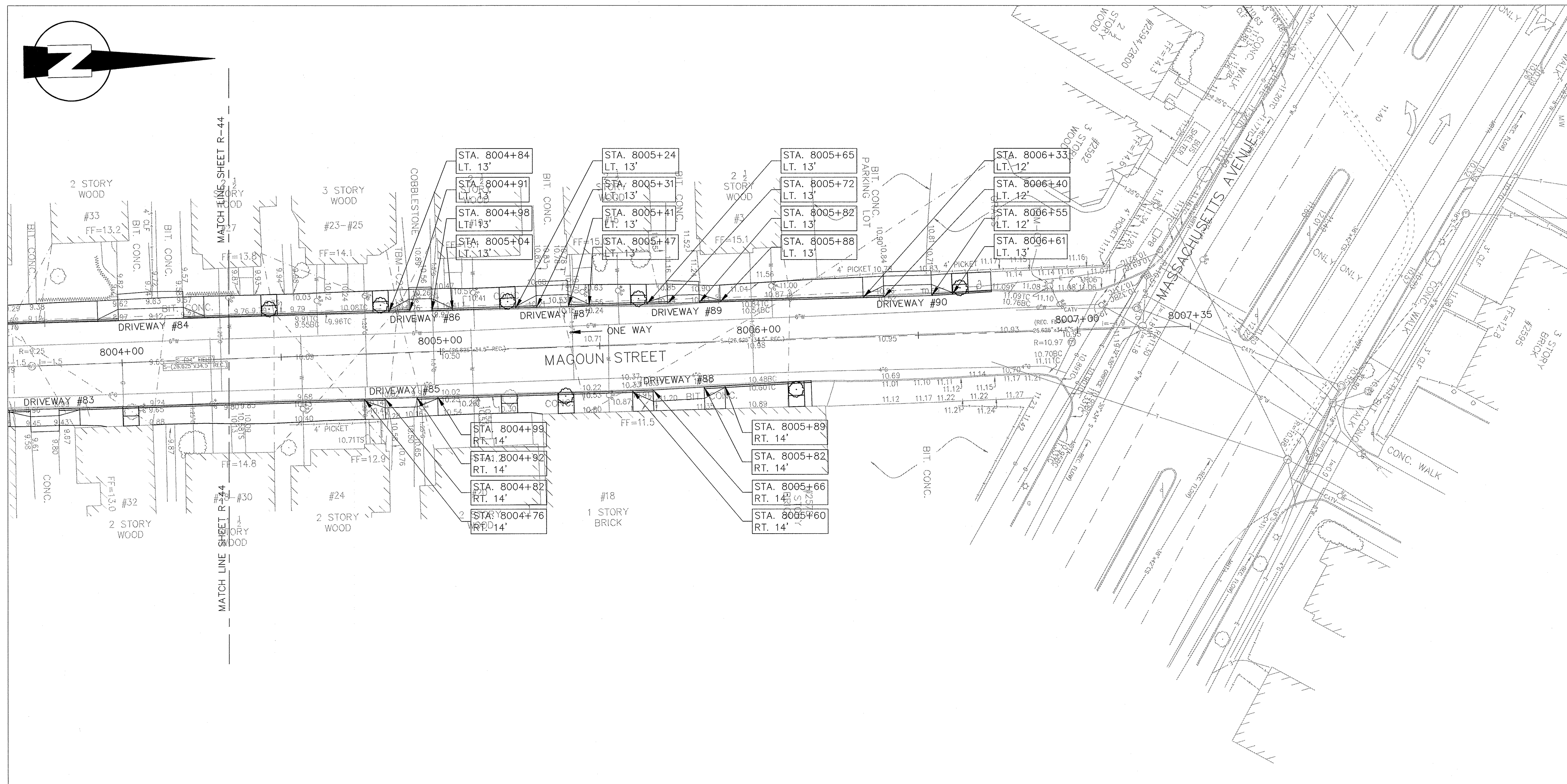
VINCENT W. SPADA
SANITARY
No. 31436
REGISTERED PROFESSIONAL ENGINEER

Scale	AS NOTED		
Date	JANUARY 15, 2010		
Job No.	2008288.03-A		
Designed by	JRM		
Drawn by	JRM		
Checked by	SFJ	No.	Description
Approved by	VWS		Date

THE WORKS
CAMBRIDGE
DEPARTMENT
OF PUBLIC
WORKS

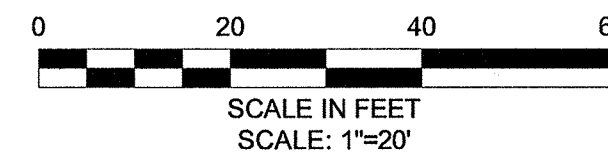
Client	CITY OF CAMBRIDGE, MA
Project	ALEWIFE BROOK FLOATABLES CONTROL (CONTRACT 4) AND CAM 400 SEWER SEPARATION PROJECT (CONTRACT 13)
Drawing	MAGOUN STREET - CURB TIE PLAN STA 8000+00 TO 8004+00

Sheet	R-44
File No.	85 OF 102



DW #	RAMP REFERENCE POINT		WIDTH OF SIDEWALK, W (FT)	WIDTH OF OPENING (FT)	TRANSITION LENGTH	
	STATION	OFFSET			*LEFT SIDE	*RIGHT SIDE
84	8004+10	LT	6.5	20.5	6'-6"	6'-6"
85	8004+87	RT	6.2	10.0	6'-6"	6'-6"
86	8004+94	LT	6.8	7.0	6'-6"	6'-6"
87	8005+36	LT	6.7	10.0	6'-6"	6'-6"
88	8005+74	RT	6.5	16.0	6'-6"	6'-6"
89	8005+77	LT	5.8	10.0	6'-6"	6'-6"
90	8006+47	LT	6.5	15.0	6'-6"	6'-6"

NOTE:
 1. LEFT AND RIGHT SIDES OF THE RAMP ARE DETERMINED BY LOOKING AT THE RAMP FROM THE ROADWAY.



CONFORMED SET

PLOT DATE: 1/14/2010 1:09:23 PM USER: BRYANT REYES FILENAME: G:\clients\cambridge\MA2008288 - CAM 400 Sewer Separation\Civil\Magoun STA2008288.03-Magoun curbing.dwg

SEA
 SEA CONSULTANTS INC.
 Scientists/Engineers/Architects
 CAMBRIDGE, MASSACHUSETTS CONCORD, NEW HAMPSHIRE
 ROCKY HILL, CONNECTICUT AUGUSTA, MAINE
 FRAMINGHAM, MASSACHUSETTS

MWH
 BOSTON
 MASSACHUSETTS

VINCENT W. SPADA
 SANITARY
 No. 31436
 PROFESSIONAL ENGINEER

Scale	AS NOTED		
Date	JANUARY 15, 2010		
Job No.	2008288.03-A		
Designed by	JRM		
Drawn by	JRM		
Checked by	SFJ	No.	Description
Approved by	VWS		Date

THE WORKS
 CAMBRIDGE
 DEPARTMENT
 OF PUBLIC
 WORKS

Client	CITY OF CAMBRIDGE, MA
Project	ALEWIFE BROOK FLOATABLES CONTROL (CONTRACT 4) AND CAM 400 SEWER SEPARATION PROJECT (CONTRACT 13)
Drawing	MAGOUN STREET - CURB TIE PLAN STA 8004+00 TO 8007+35

Sheet
R-45
 86 OF 102
 File No.