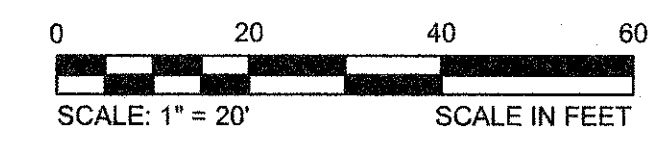


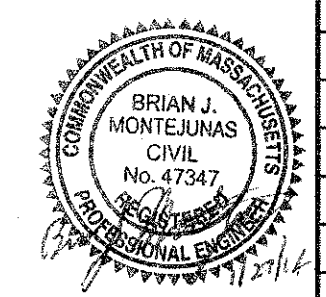
GENERAL NOTES:

1. EXISTING CONDITIONS COMPILED FROM ON THE GROUND SURVEY PERFORMED BY WSP SELL, INC., ELECTRONIC TRACING AND SUBSURFACE VACUUM TEST PITS BY BSI ENGINEERING, AND INFORMATION RECEIVED FROM THE UTILITY OWNER AND THE CAMBRIDGE WATER DEPARTMENT.
2. GEOTECHNICAL BORINGS ADVANCED BY CARR-DEE. REFER TO APPENDIX C FOR LOGS.
3. REFER TO APPENDIX D FOR COLOR VERSIONS OS BSI ELECTRIC UTILITY TRACING AND VACUUM TEST PIT LOGS.
4. EC SHEETS ONLY SHOW EXISTING CONDITIONS ON CONCORD AVENUE, BAYSTATE ROAD, FIELD STREET, AND GARDEN STREET.



CONFORMED SET

CAD FILE: G:\clients\cambridge\MA\2012256-D1-A-Concord Ave (Contract 9)\Drawings\Civil\Production Drawings\Existing Conditions\EC_Concord Ave.dwg
 LAYOUT: Concord Ave1
 PLOTTED: 2/19/2014 8:16 AM BY: Kyle Langille



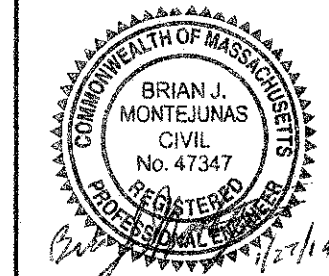
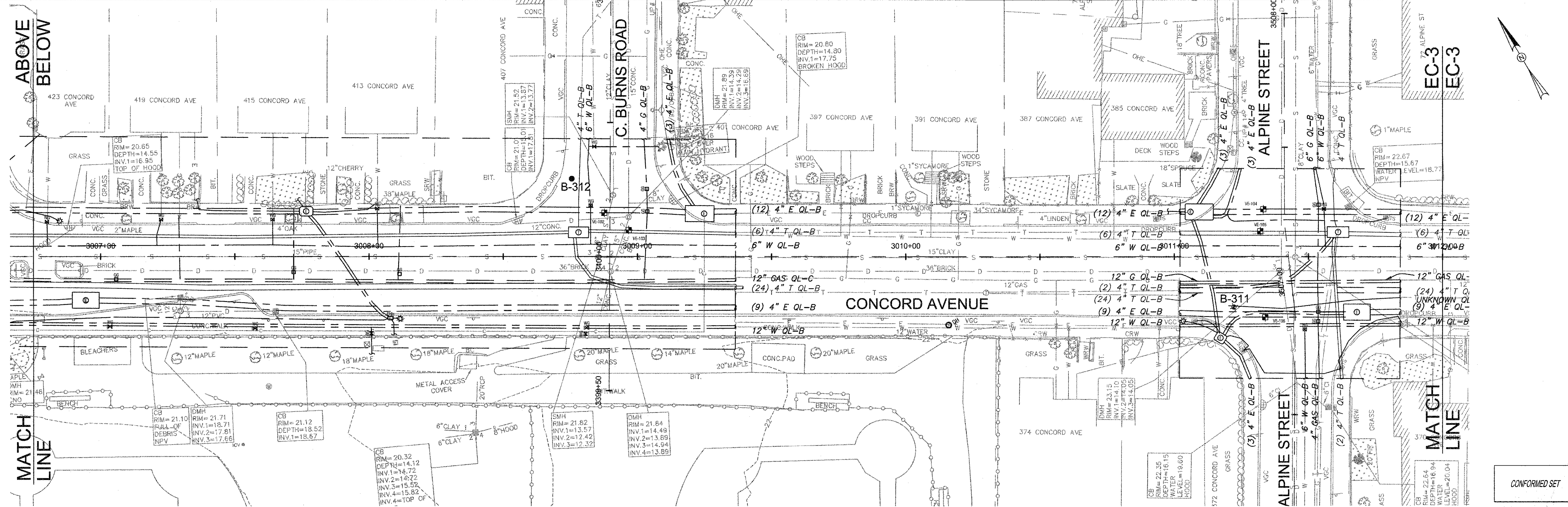
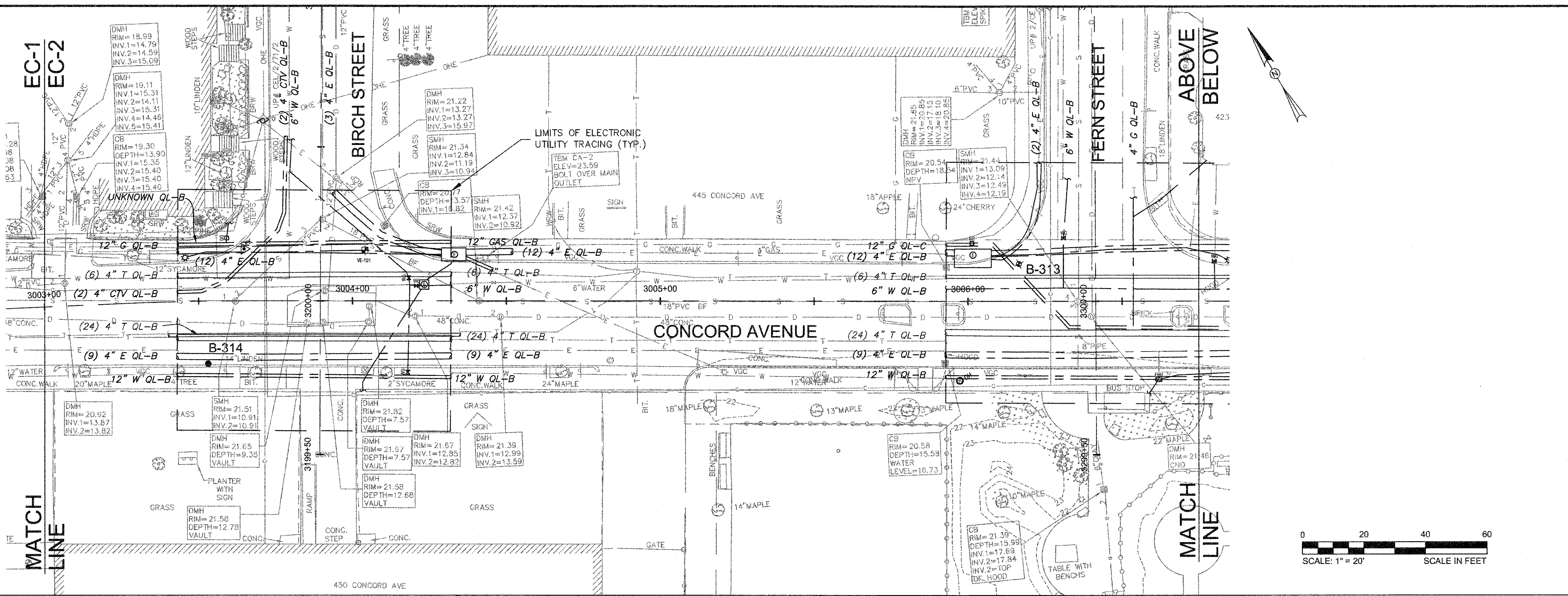
Scale	AS NOTED		
Date	FEBRUARY 2014		
Job No.	20120256.001A		
Designed by	TAL/JRB/FMM		
Drawn by	KJL/DRM/BMS/DRB		
Checked by	CMC/TJR	No.	Description
Approved by	JJS		REVISIONS



Client	CITY OF CAMBRIDGE, MASSACHUSETTS
Project	CONCORD (CONTRACT 9) SEWER SEPARATION AND SURFACE IMPROVEMENTS PROJECT
Drawing	EXISTING CONDITIONS CONCORD AVENUE STA 3000+00 TO 3003+00

Sheet	EC-1
File No.	6228

CAD FILE: G:\clients\cambridge\MA2012256-01-A - Concord Ave (Contract 9) Sewer Separation Drawings\EC-2\Production Drawings\EC-2\Concord Ave.dwg
 LAYOUT: Concord Ave.dwg
 PLOTTED: 2/13/2014 8:17 AM BY: kyle.jungius



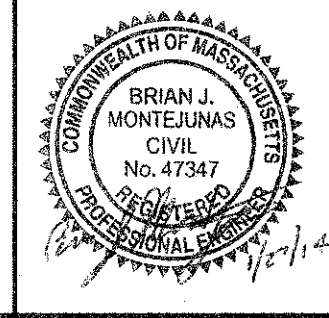
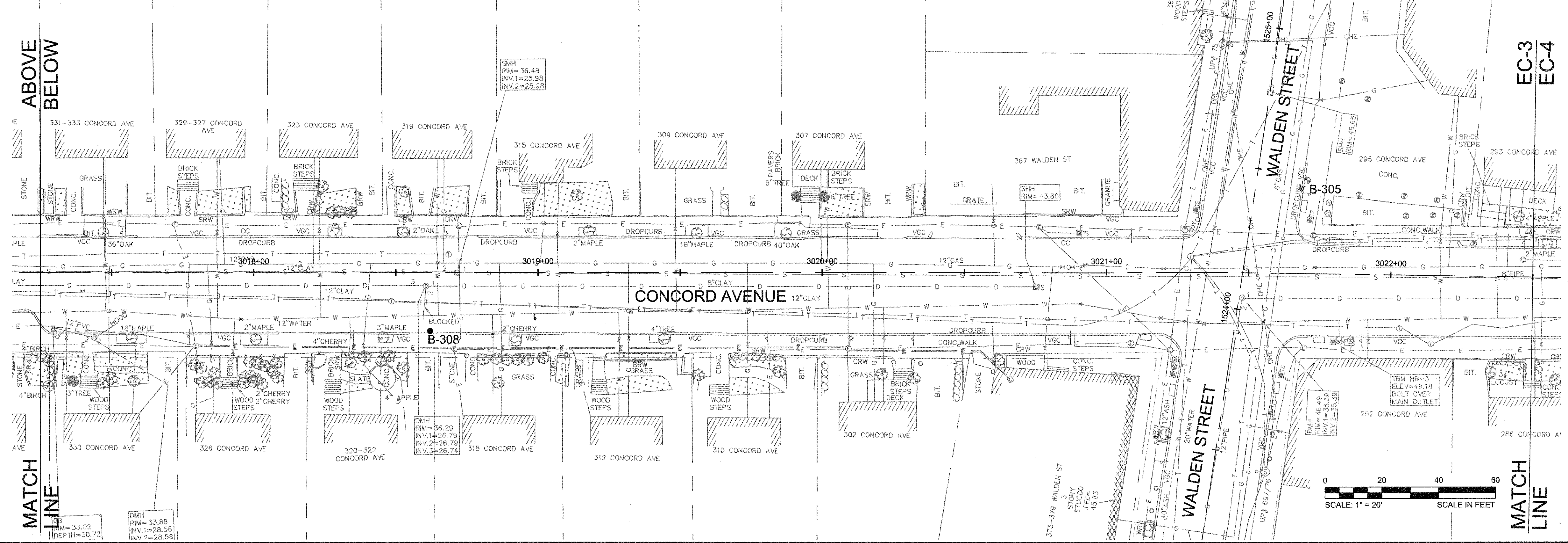
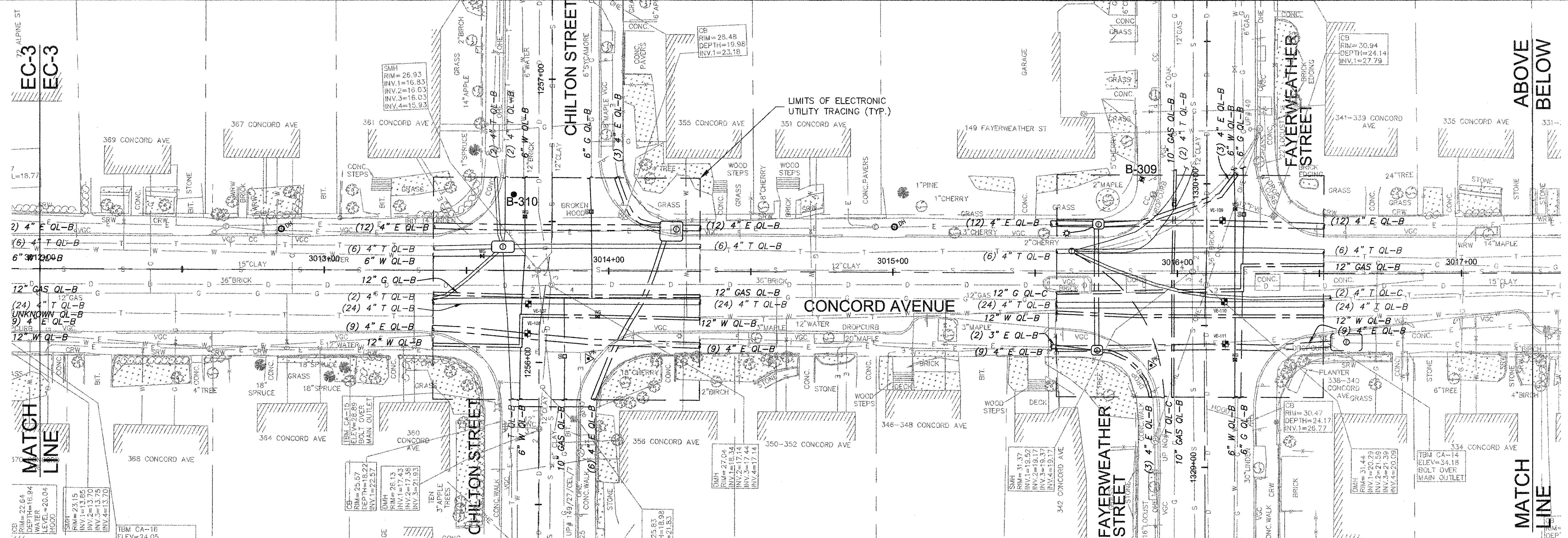
Scale	AS NOTED		
Date	FEBRUARY 2014		
Job No.	20120256-001A		
Designed by	TAL/JRB/FMM		
Drawn by	KJL/DRM/BMS/DRB		
Checked by	CMC/TJR	No.	Description
Approved by	JJS		REVISIONS



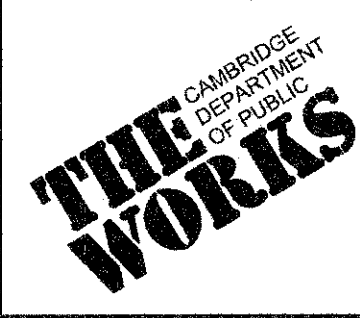
Client	CITY OF CAMBRIDGE, MASSACHUSETTS	Sheet	EC-2
Project	CONCORD (CONTRACT 9) SEWER SEPARATION AND SURFACE IMPROVEMENTS PROJECT	File No.	6228
Drawing	EXISTING CONDITIONS CONCORD AVENUE STA 3003+00 TO 3012+00		

CONFORMED SET

CAD FILE: G:\clients\cambridge\MA2012256-01-A - Concord Ave (Contract 9) Sewer Separation and Surface Improvements\Drawings\EC_ConcordAve.dwg LAYOUT: ConcordAve.dwg PLOTTED: 2/13/2014 8:16 AM BY: kyle.ingalls



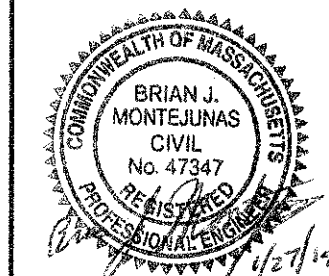
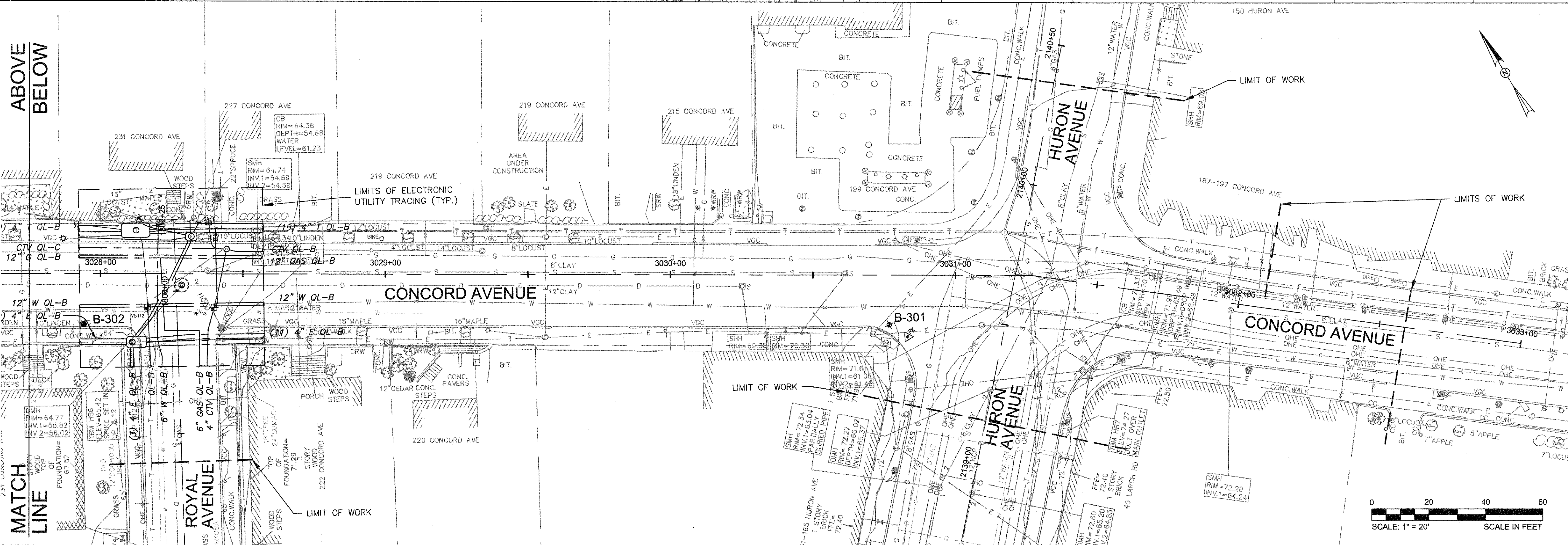
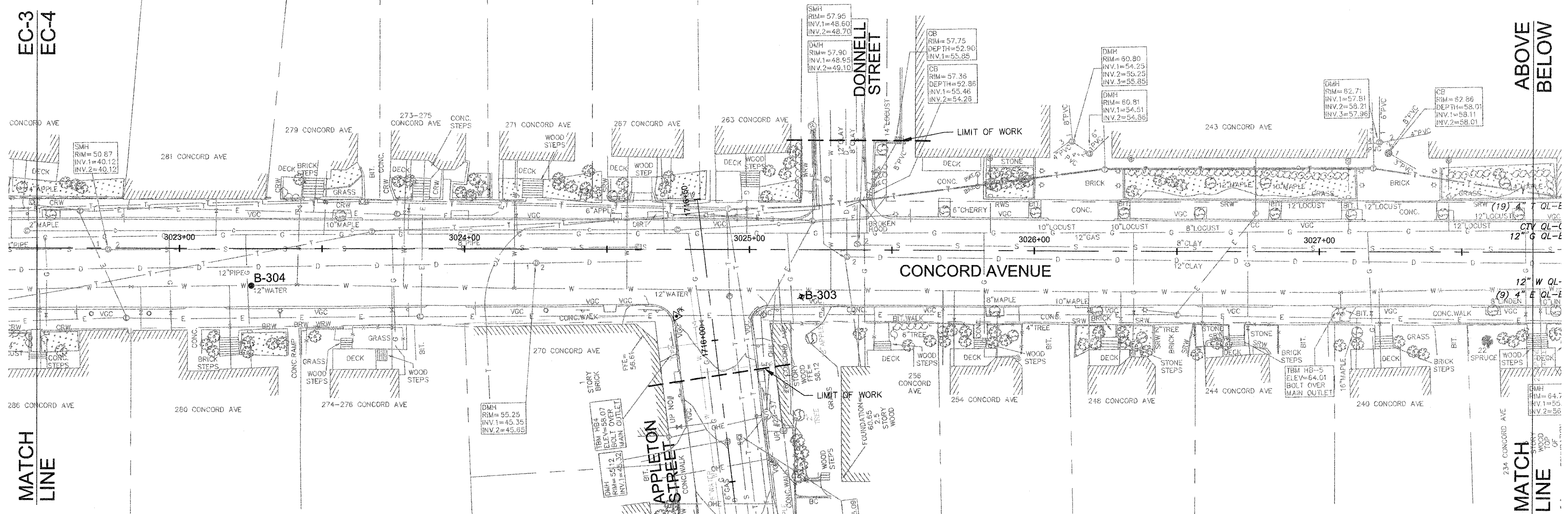
Scale	AS NOTED			
Date	FEBRUARY 2014			
Job No.	20120256-001A			
Designed by	TAL/JRB/FMM			
Drawn by	KJL/DRM/BMS/DRB			
Checked by	CMC/JJR	No.	Description	Date
Approved by	JJS		REVISIONS	



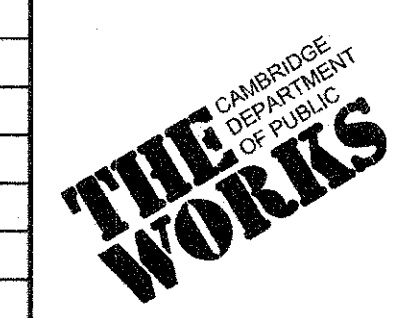
Client	CITY OF CAMBRIDGE, MASSACHUSETTS	Sheet	EC-3
Project	CONCORD (CONTRACT 9) SEWER SEPARATION AND SURFACE IMPROVEMENTS PROJECT	File No.	6228
Drawing	EXISTING CONDITIONS CONCORD AVENUE STA 3012+00 TO 3022+50		

CONFORMED SET

CAD FILE: G:\clients\cambridge\MA2012256\01-4 - Concord Ave (Contract 9)\Drawings\DWG\Production\Drawings\Existing Conditions\EC_ConcordAve.dwg LAYOUT: ConcordAve.dwg PLOTTED: 2/13/2014 8:19 AM BY: Kyle Ingalls



Scale	AS NOTED
Date	FEBRUARY 2014
Job No.	20120256.001A
Designed by	TAL/JRB/FMM
Drawn by	KJL/DRM/BMS/DRB
Checked by	CMC/TJR
Approved by	JJS



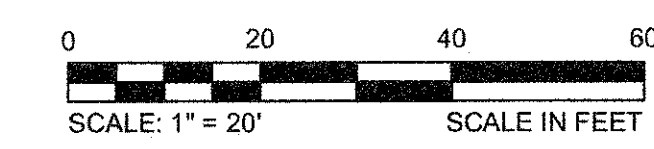
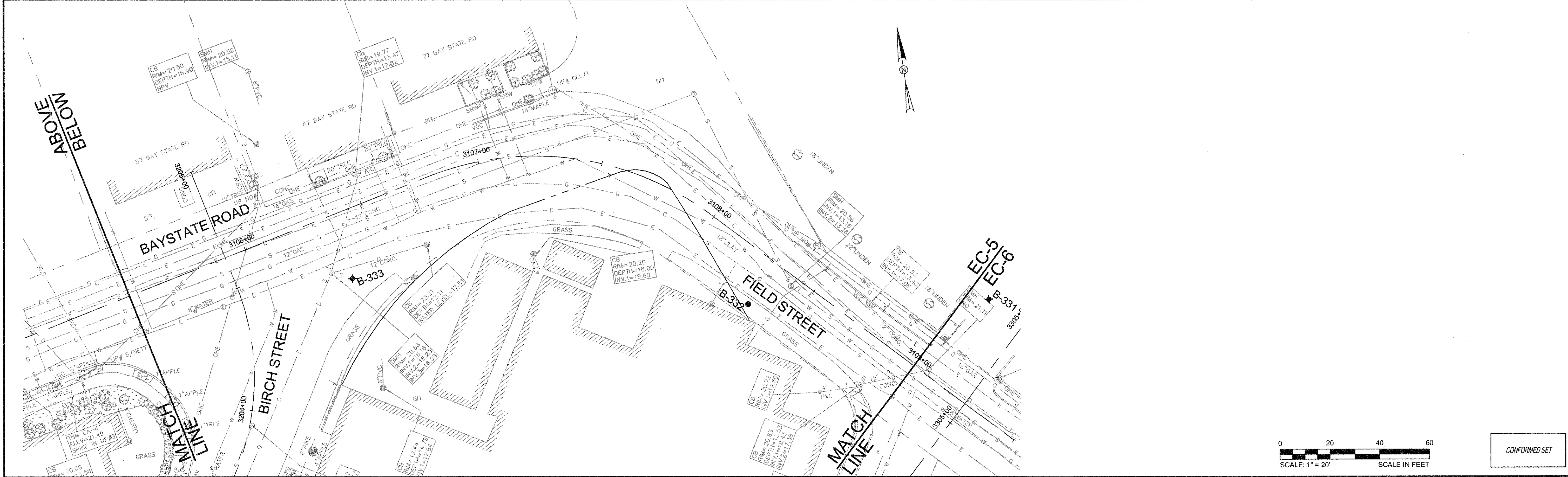
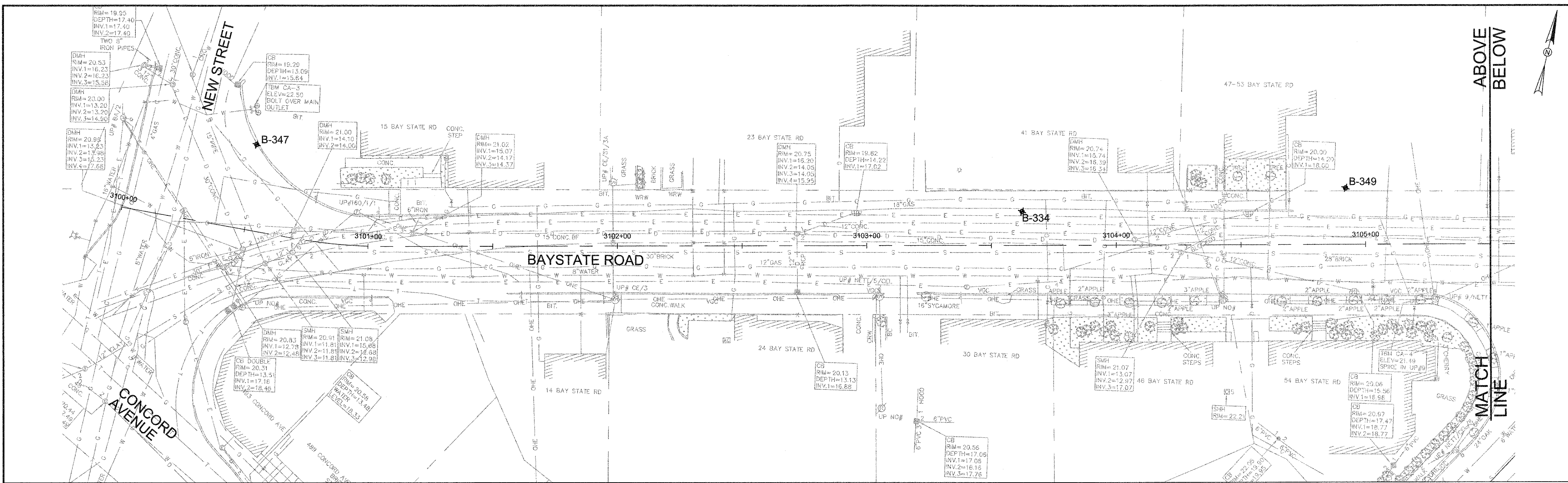
Client	CITY OF CAMBRIDGE, MASSACHUSETTS
Project	CONCORD (CONTRACT 9) SEWER SEPARATION AND SURFACE IMPROVEMENTS PROJECT
Drawing	EXISTING CONDITIONS CONCORD AVENUE STA 3022+50 TO 3031+78

Sheet	EC-4
File No.	6228

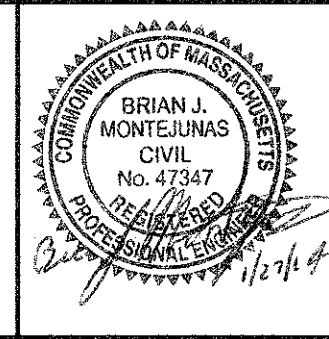


CONFORMED SET

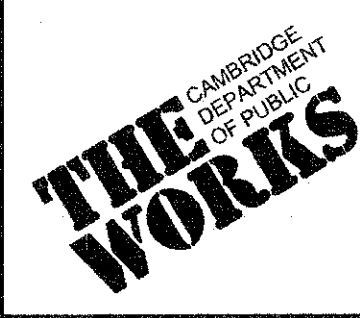
CAD FILE: G:\clients\cambridge\MA2012256-D1-A - Concord Ave (Contract 9)\Drawings\DWG\Production Drawings\Existing Conditions\EC_BayState-Field-Feyrweather.dwg
 LAYOUT: BayStateField PLOTTED: 2/12/2014 8:07 AM BY: Kyle Langdon



CONFORMED SET



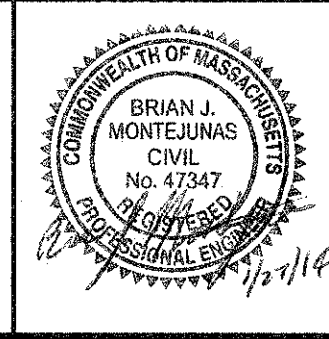
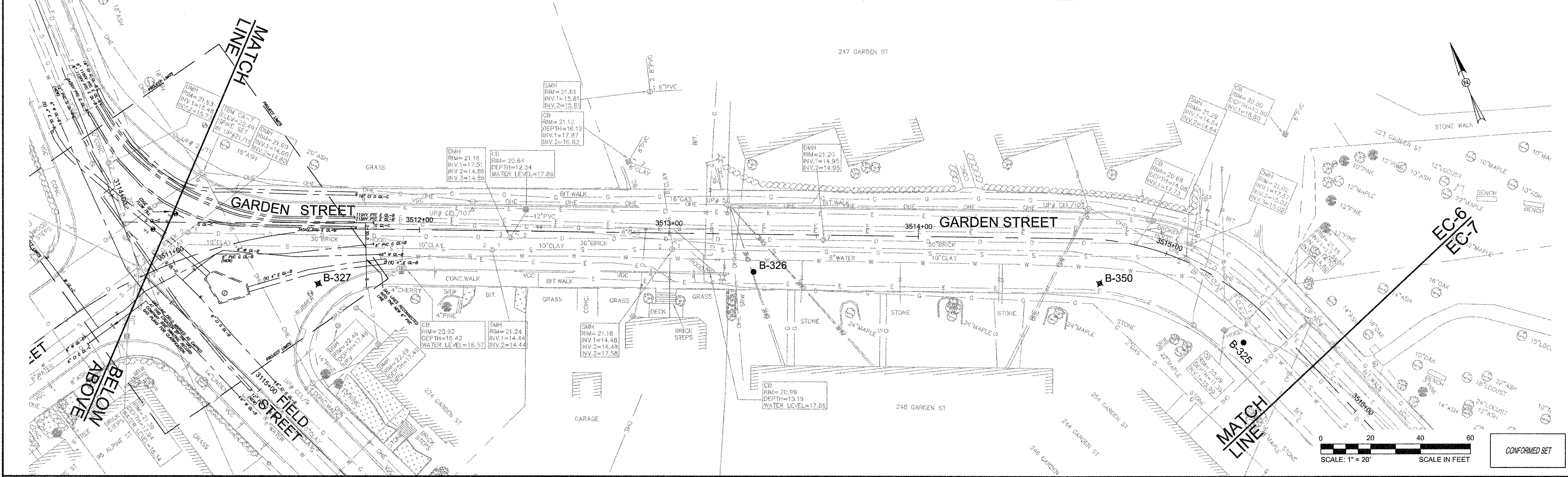
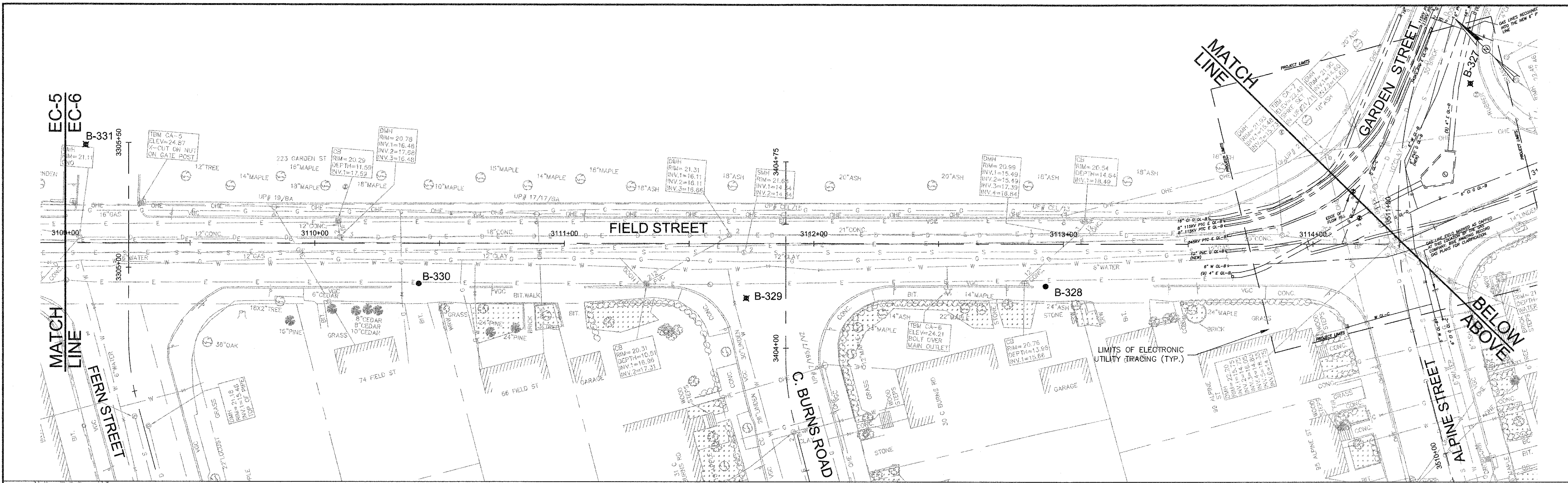
Scale	AS NOTED		
Date	FEBRUARY 2014		
Job No.	20120256.001A		
Designed by	TAL/JRB/FMM		
Drawn by	KJL/DRM/BMS/DRB		
Checked by	CMC/TJR	No.	Description
Approved by	JJS		Date
			REVISIONS



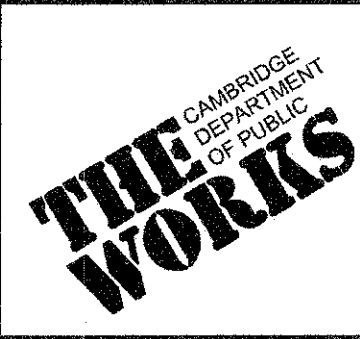
Client	CITY OF CAMBRIDGE, MASSACHUSETTS
Project	CONCORD (CONTRACT 9) SEWER SEPARATION AND SURFACE IMPROVEMENTS PROJECT
Drawing	EXISTING CONDITIONS BAY STATE ROAD - FIELD STREET STA 3100+00 TO 3109+00

Sheet	EC-5
File No.	6228

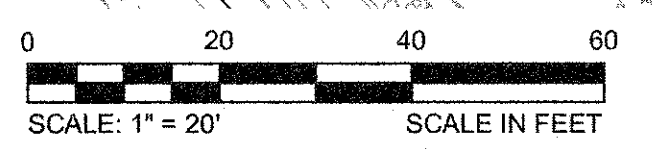
CAD FILE: G:\clients\cambridge\MA\201226\01-A_Concord_Ave_Contract_9\Drawings\Civil\Production Drawings\Existing Conditions\EC_BayState-Field-Fernwaywater.org LAYOUT: FieldGarden1_PLOTTED: 2/13/2014 8:07 AM BY: hyl:anglis



Scale	AS NOTED			
Date	FEBRUARY 2014			
Job No.	20120256.001A			
Designed by	TAL/JRB/FMM			
Drawn by	KJL/DRM/BMS/DRB			
Checked by	CMC/JJR	No.	Description	Date
Approved by	JJS		REVISIONS	

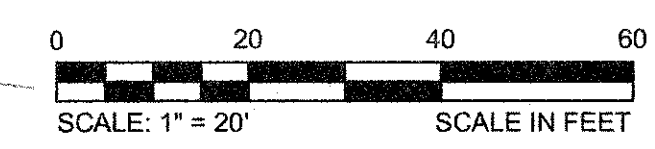
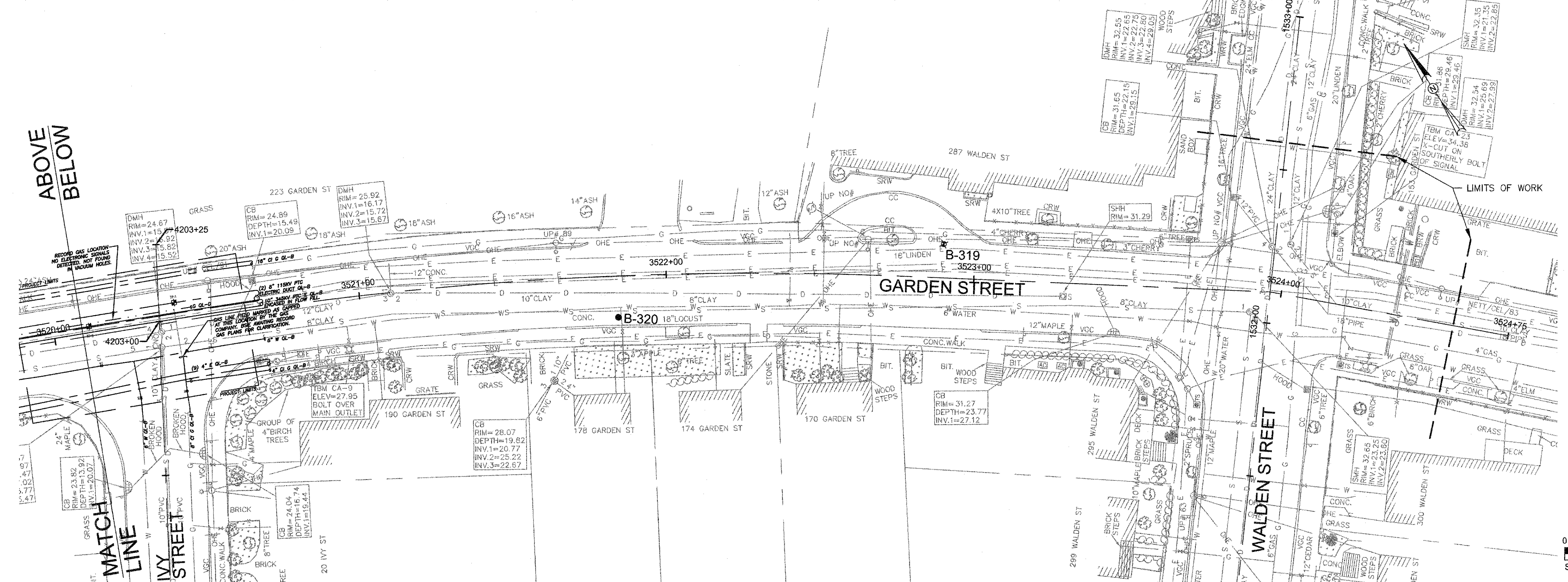
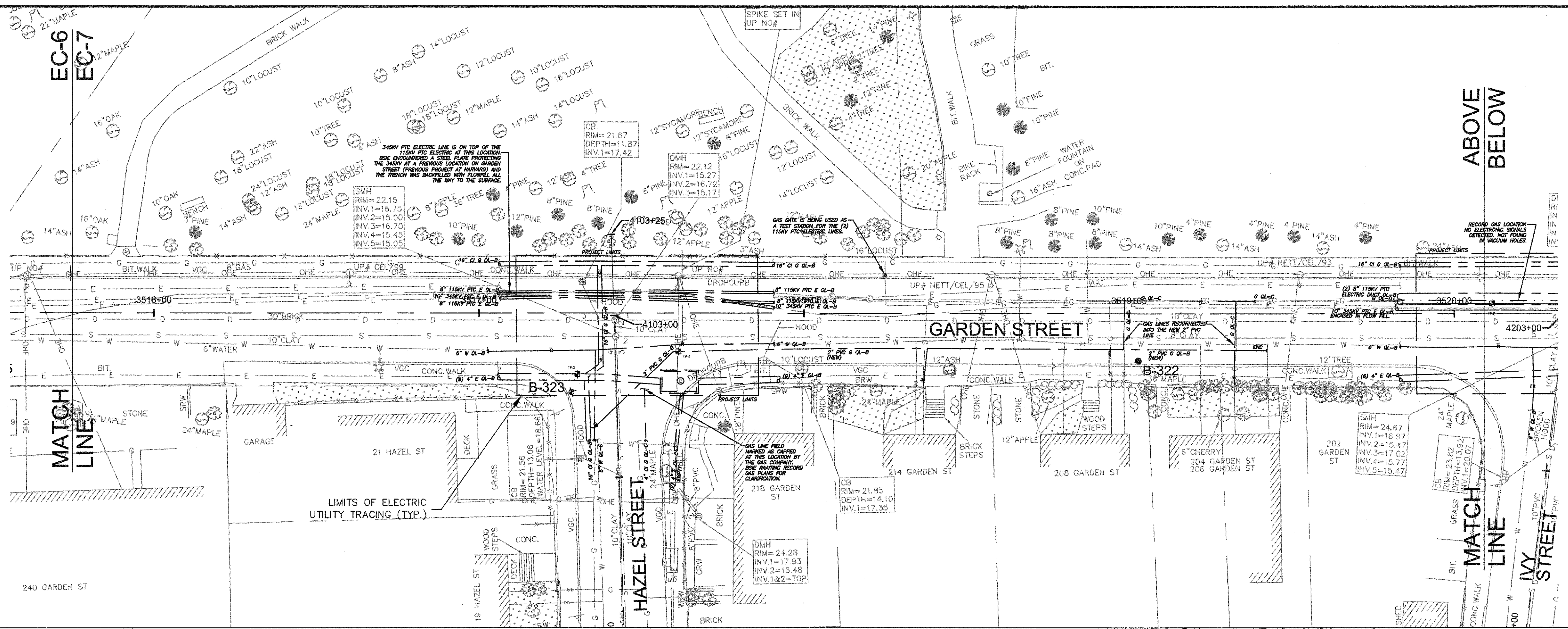


Client	CITY OF CAMBRIDGE, MASSACHUSETTS	Sheet	EC-6
Project	CONCORD (CONTRACT 9) SEWER SEPARATION AND SURFACE IMPROVEMENTS PROJECT	File No.	6228
Drawing	EXISTING CONDITIONS FIELD ST 3109+00 TO 3115+00, GARDEN ST 3511+00 TO 3515+75		

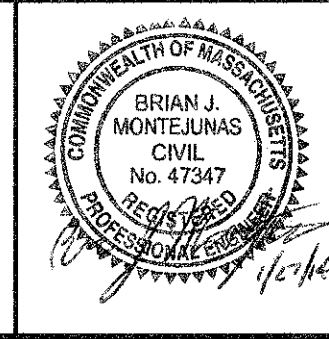


CONFORMED SET

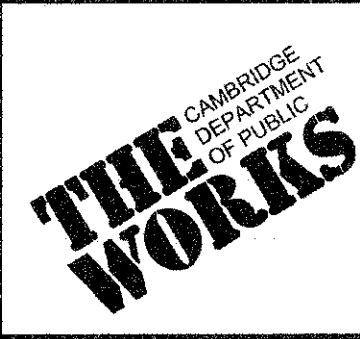
CAD FILE: G:\Clients\Cambridge MA\2012256-01-A - Concord Ave (Contract 9) Drawings\DWG\Production Drawings\Existing Conditions\EC_Busy\Drawings\Map\Production.dwg LAYOUT: Garden St.1 PLOTTED: 2/18/2014 8:08 AM BY: xjb langlais



CONFORMED SET



Scale	AS NOTED
Date	FEBRUARY 2014
Job No.	20120256-001A
Designed by	TAL/JRB/FMM
Drawn by	KJL/DRM/BMS/DRB
Checked by	CMC/UR
Approved by	JJS
No.	
Description	
Date	
REVISIONS	



Client	CITY OF CAMBRIDGE, MASSACHUSETTS
Project	CONCORD (CONTRACT 9) SEWER SEPARATION AND SURFACE IMPROVEMENTS PROJECT
Drawing	EXISTING CONDITIONS GARDEN STREET STA 3515+75 TO 3524+67

Sheet	EC-7
File No.	6228