

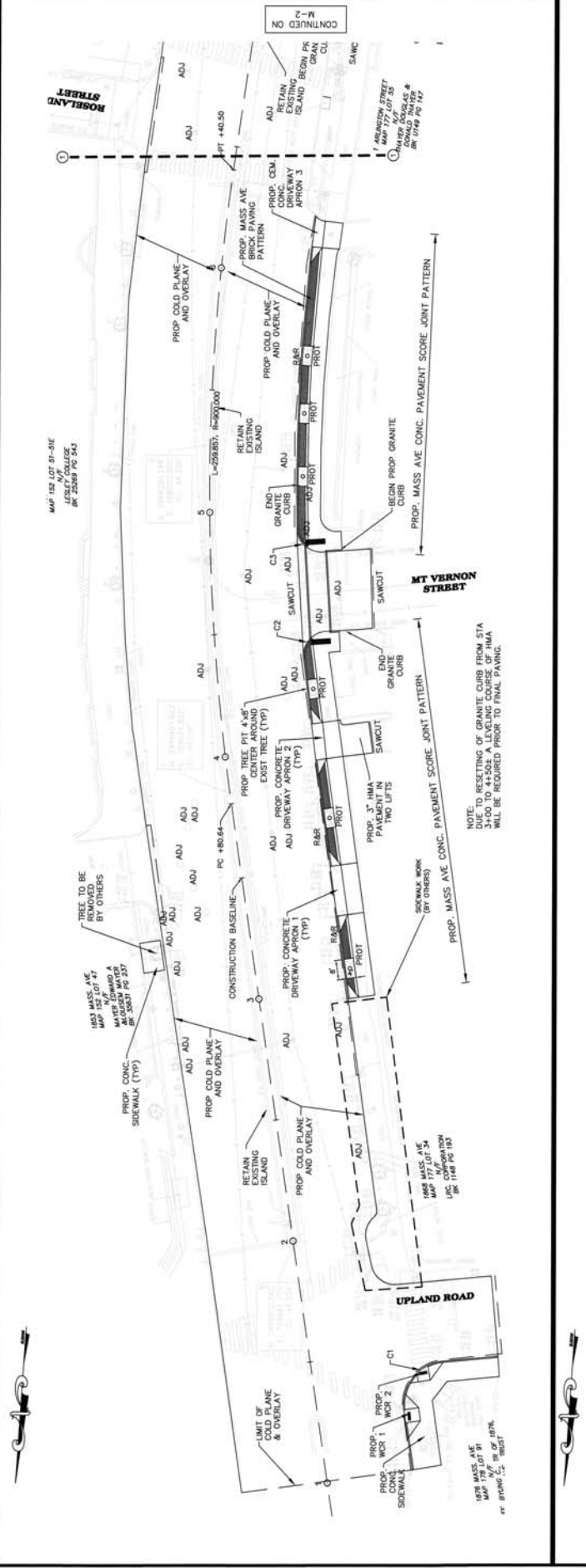
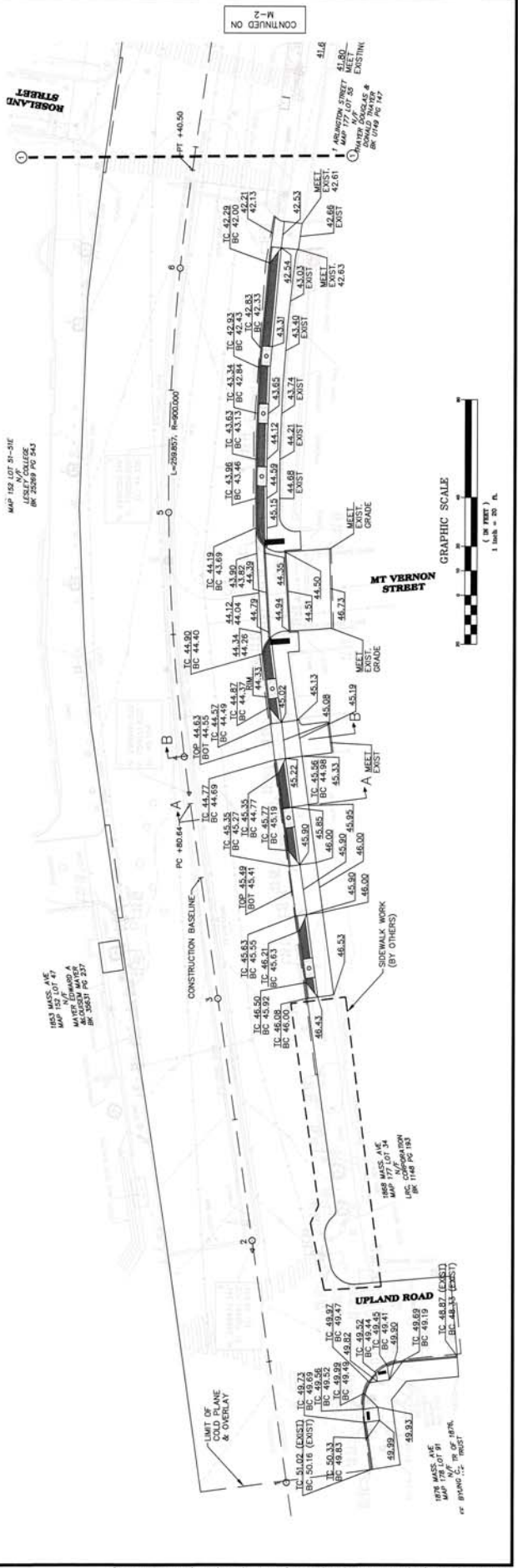
FILE NO.	SCALE	AS NOTED	CONTRACT	JOB NO.	DESIGN	DATE	BY

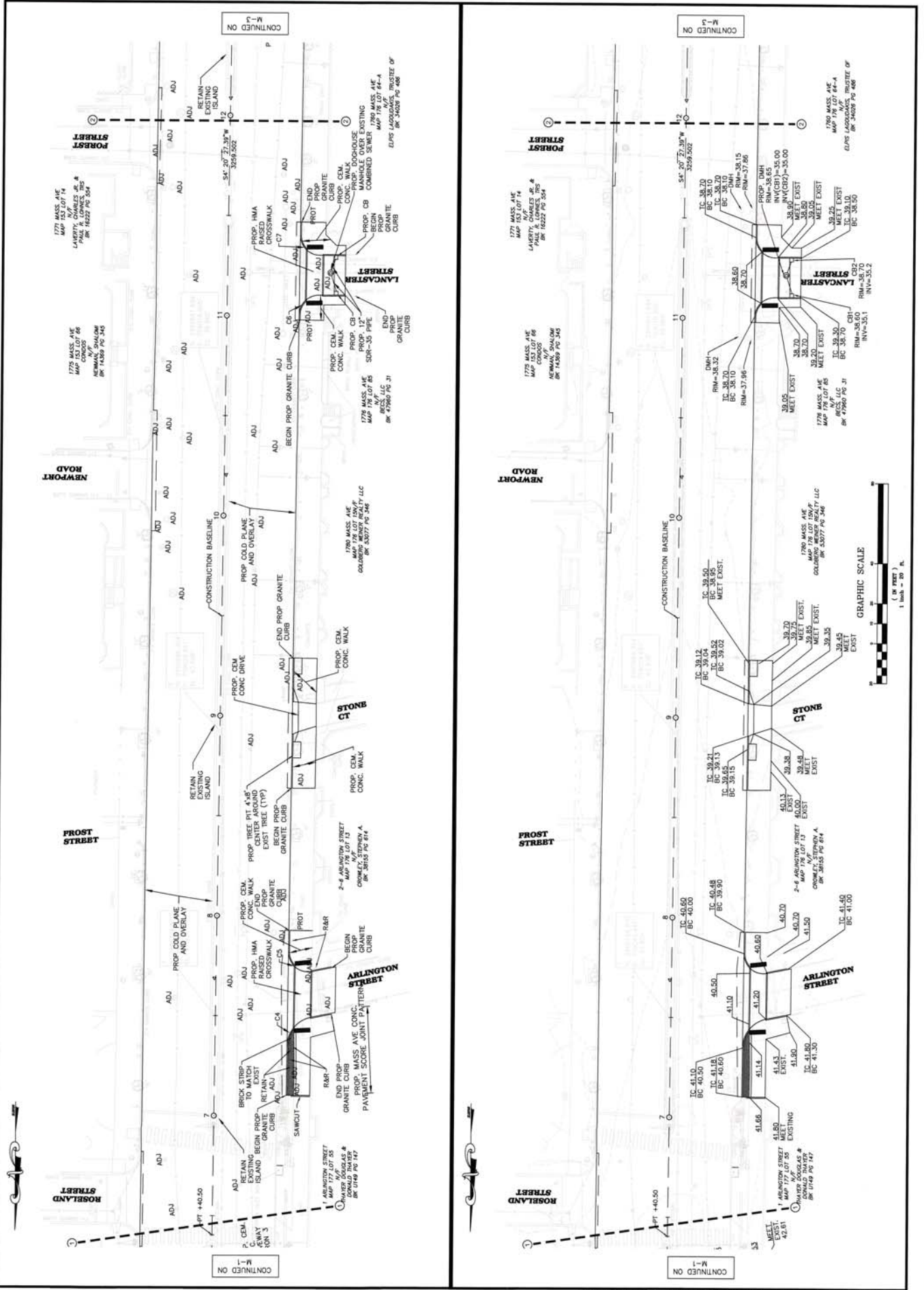
CHAPTER 90 CONTRACT 16 DESIGN AND MISCELLANEOUS SIDEWALKS
 MASSACHUSETTS AVENUE
 CONSTRUCTION AND GRADING PLAN



REGISTERED PROFESSIONAL ENGINEER
 Robert A. Weston
 DATE 7.27.16

Weston & Sampson
 100 Park Street, 12th Floor, Boston, MA 02108
 www.westonsampson.com





CONTINUED ON M-1

CONTINUED ON M-3

CONTINUED ON M-1

CONTINUED ON M-3

PEDESTRIAN RAMP TABLE

PEDESTRIAN RAMP NO.	PEDESTRIAN RAMP TYPE	PEDESTRIAN RAMP REFERENCE POINT B - MASS.		LENGTH OF PRIMARY RAMP (WT)	WIDTH OF SIDEWALK	WIDTH OF RAMP	DEPTH OF LANDING (4'-0" MIN)	ROADWAY SLOPE	TRANSITION LENGTH (FT.)	
		STATION	OFFSET						LEFT SIDE	RIGHT SIDE
1	1	1+22 RT	35'-6"	6'-0"	8'-4"	5'-0"	-	-3.4%	6'-6"	6'-6"
2	1	1+37 RT	43'-6"	6'-0"	8'-4"	5'-0"	-	-0.6%	6'-6"	5'-0"

CONSTRUCTION NOTES:

1. THE CONTRACTOR SHALL REMOVE AS MUCH OF THE EXISTING GRANITE CURBS AS POSSIBLE. THE CONTRACTOR SHALL REPLACE GRANITE PIECES THAT ARE BROKEN OR HAVE SIGNIFICANT CHIPS OR GOUGES AS REQUIRED BY THE ENGINEER.
2. ALL UTILITY STRUCTURE COVERS WITHIN THE LIMITS OF PEDESTRIAN RAMPS SHALL BE REPLACED WITH A NON-SLIP EQUIVALENT.
3. ALL PROPOSED WALK SHALL BE CEMENT CONCRETE UNLESS OTHERWISE NOTED.
4. WHEN MEETING EXISTING CEMENT CONCRETE SIDEWALK PAVEMENT SHALL BE SAWCUT ON LIMIT LINES AS INDICATED ON PLANS.
5. ALL SIGNS SHALL BE REMOVED AND RESET WITH A NEW SIGN POLE AS REQUIRED BY THE ENGINEER.
6. REMOVE AND REPLACE ALL EXISTING FRAME AND GRATES AS REQUIRED BY THE ENGINEER.
7. ALL SIDEWALK RECONSTRUCTION SHALL END AT THE LIMIT OF WORK UNLESS A COMPLIANT SECTION OF WALKWAY IS LOCATED WITHIN 15' OF THE LIMIT OF WORK.
8. ALL PROPOSED DRAIN LINE SHALL BE 12" PVC UNLESS OTHERWISE NOTED.
9. ALL TREES WITHIN THE PROJECT LIMIT SHALL BE PROTECTED.

PAVEMENT MARKING NOTES:

1. ALL PROPOSED PAVEMENT MARKINGS SHALL BE THERMOPLASTIC, PLACED AS SHOWN ON THE PLANS OR AS REQUIRED BY THE ENGINEER AND SHALL MATCH EXISTING MARKINGS AT THE LIMIT OF WORK.
2. ALL PROPOSED SYMBOL MARKINGS SHALL BE PAVEMENT MARKING TAPE (380 1 SERIES).
3. LANE LINES SHALL BE 6 INCHES WIDE. STOP BARS SHALL BE 12 INCHES WIDE. CROSSWALKS SHALL BE 24 INCHES WIDE.
4. THE CONTRACTOR SHALL LAYOUT ALL PROPOSED PAVEMENT MARKINGS AND RECEIVE APPROVAL FROM CITY OFFICIALS PRIOR TO APPLICATION OF PAVEMENT MARKINGS.

DRIVEWAY TABLE

DRIVEWAY NO.	DRIVEWAY TYPE	DRIVEWAY REFERENCE POINT B - MASS.		LENGTH OF PRIMARY RAMP (WT)	LENGTH OF TRAVEL WALKWAY FROM GUTTER LINE TO BACK OF WALK	LENGTH OF DRIVEWAY FROM GUTTER LINE TO BACK OF WALK	ROADWAY GUTTER SLOPE	TRANSITION LENGTH (FT.)	
		STATION	OFFSET					LEFT SIDE	RIGHT SIDE
1	1	3+39 RT	36'-8"	4'-6"	6'-6"	20'-6"	-1.3%	6'-6"	6'-6"
2	1	4+01 RT	36'-11"	4'-6"	6'-6"	20'-6"	-1.0%	6'-6"	6'-6"
3	1	6+19 RT	36'-3"	4'-6"	7'-3"	11'-8"	1.1%	N/A	6'-6"
4	1	8+99 RT	36'-5"	4'-6"	6'-6"	16'-5"	<-0.5%	6'-6"	6'-6"

Curve #	Radius	Length
C1	16'	29.3'
C2	10'	16.3'
C3	10'	16.2'
C4	15'	20.5'
C5	10'	17.8'
C6	10'	15.5'
C7	10'	15.7'



NO.	DATE	DESCRIPTION	BY	CHKD BY	APP'D BY

FILE NO.	SCALE	CONTRACT	JOB NO.	DESIGNER	CHECKER	APP'D BY

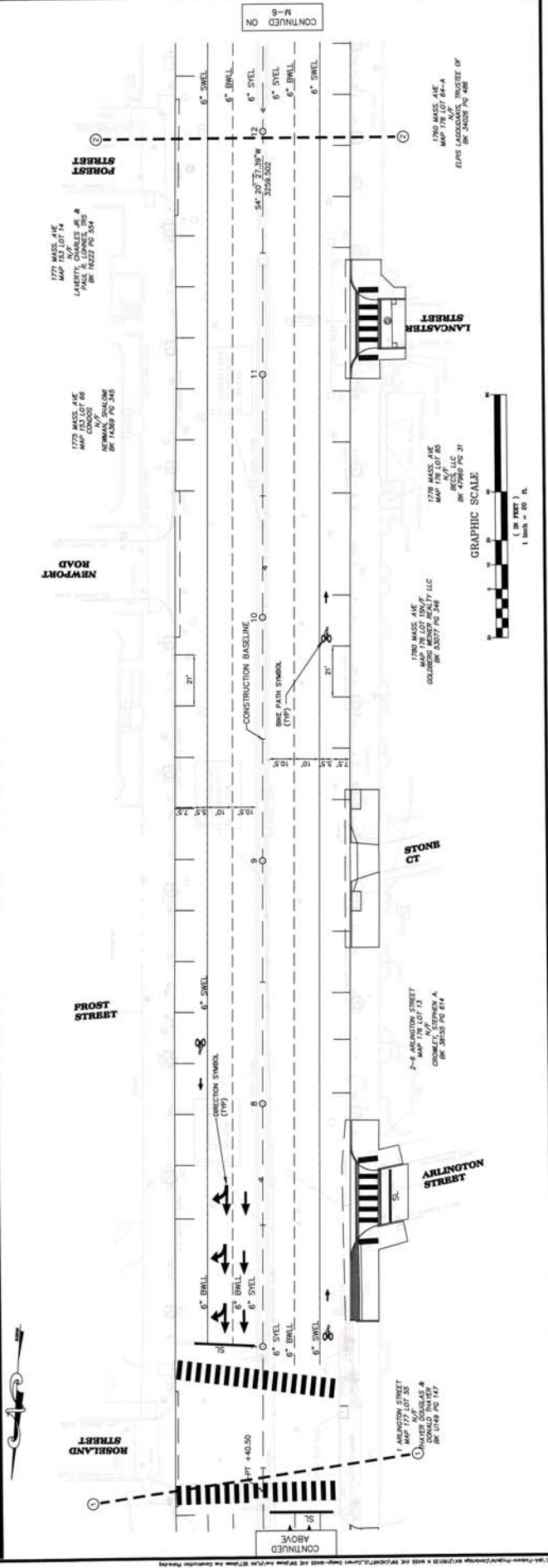
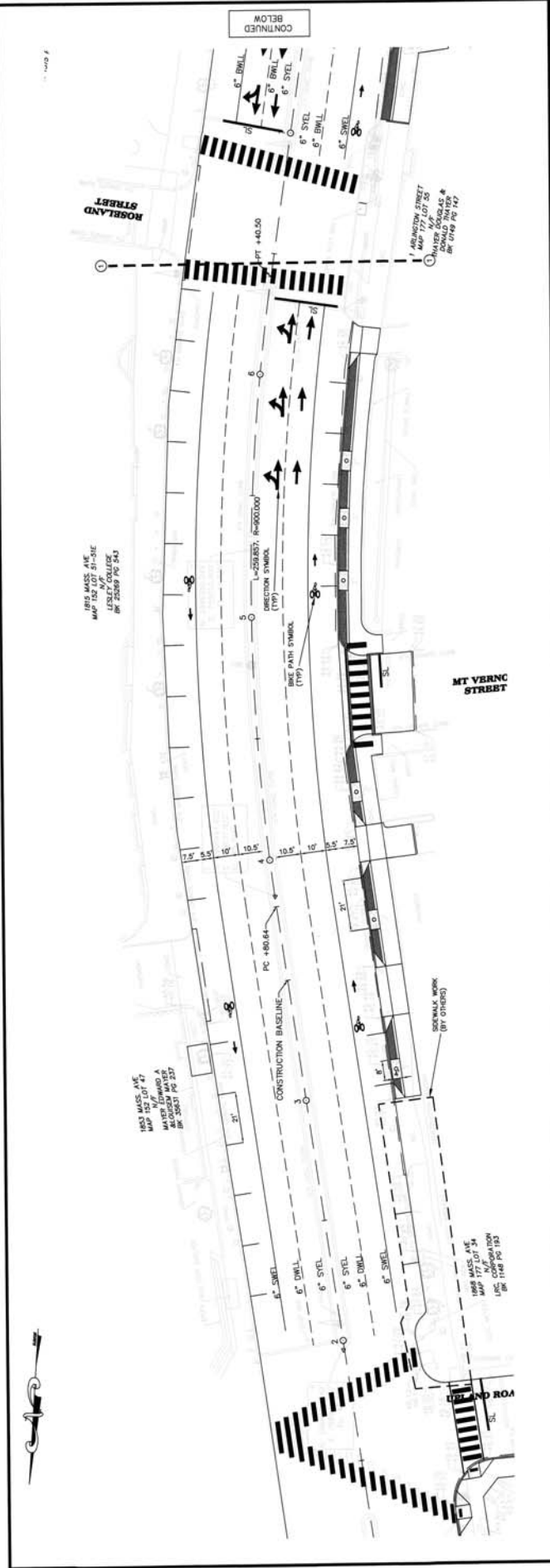
CHAPTER 90 CONTRACT 16 DESIGN AND MISCELLANEOUS SIDEWALKS
DEPARTMENT OF PUBLIC WORKS
CAMBRIDGE, MASSACHUSETTS
PAVEMENT MARKING PLAN
MASSACHUSETTS AVENUE



No.	Date	Dr./By	Chk./By	Apply	Description

DATE: 7.22.16

Weston & Sampson
100 Rte 1A, Westford, MA 01886
(978) 898-3034 (978) 849-9000
www.westonsampson.com



FILE NO.	
CAD NO.	
SCALE	AS NOTED
CONTRACT	
JOB NO.	
DRBY	
NSBY	
NAP	
CRKBY	
CHKBY	
APPBY	
LFK	

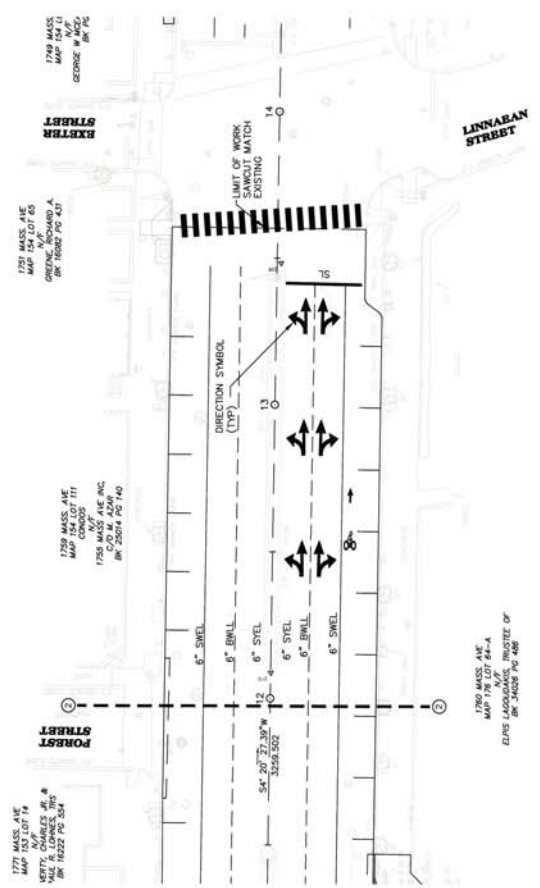
CHAPTER 90 CONTRACT 16 DESIGN AND MISCELLANEOUS SIDEWALKS
 MASSACHUSETTS AVENUE
 PAVEMENT MARKING PLAN



REGISTERED PROFESSIONAL ENGINEER
 George F. Blais

DATE	7-27-16
DESCRIPTION	
A	
P	
R	
O	
V	
E	
D	

Weston & Sampson
 100 Parkhurst Blvd., 2500 Parkhurst, MA
 (508) 666-3004 (508) 848-0000
 www.westonandsampson.com



CONTINUED ON M-5

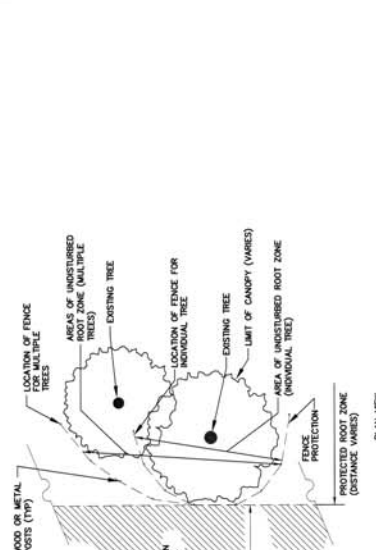
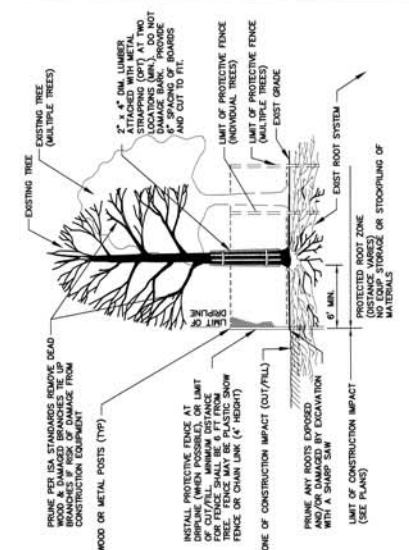


DATE	1.22.16
CONTRACT	2160126
AS NOTED	-
CONTRACT	16-033
DATE	2/20/2022
MAP	NAP
CONTRACT	CONTRACT
CHK BY	CHK BY
DATE	DATE
APP BY	APP BY

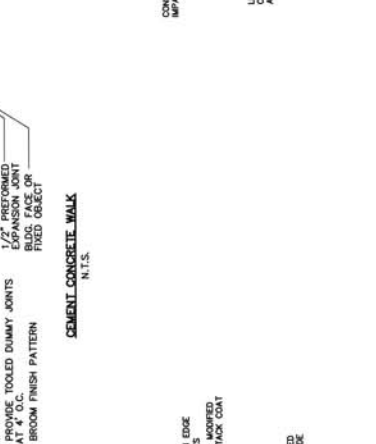
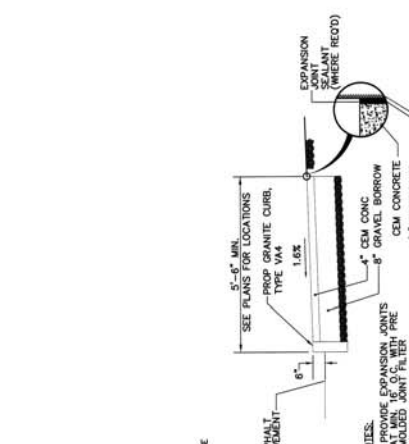
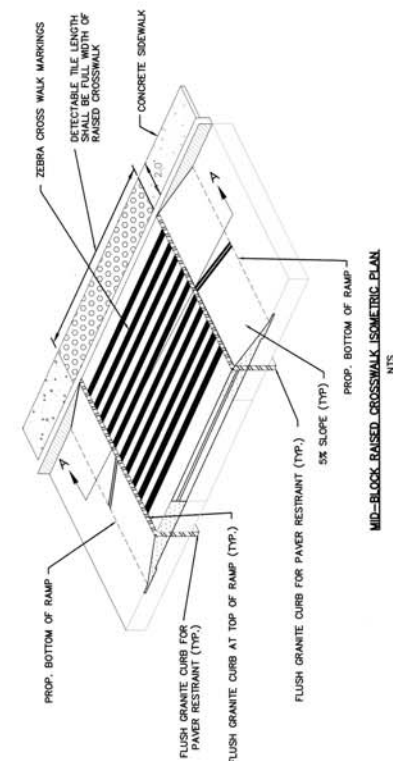


NO.	DATE	DESCRIPTION

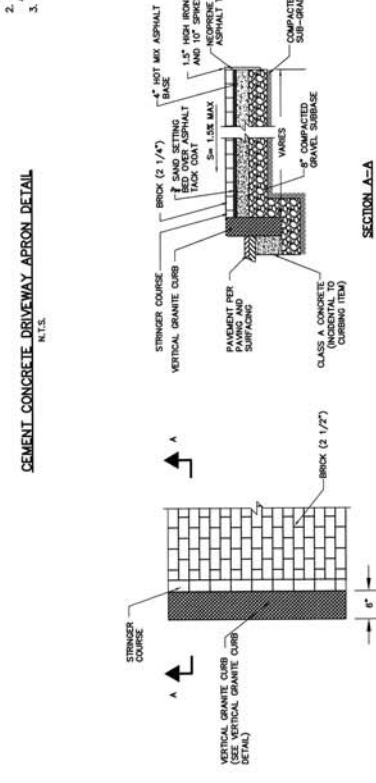
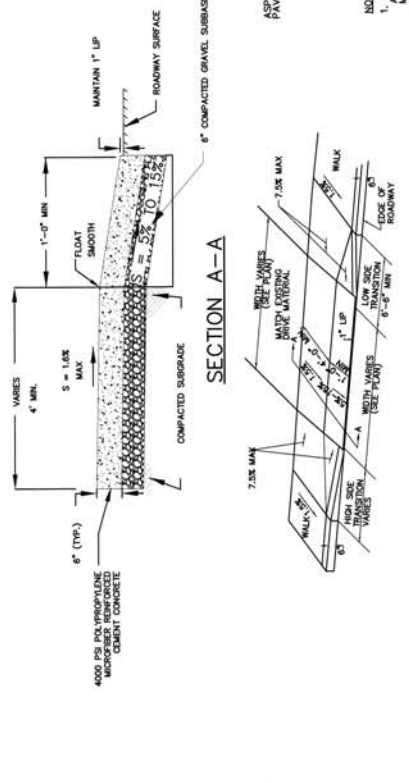
Weston & Sampson
100 Fenwick St., 5th Fl., Boston, MA 02115
(617) 552-1000
www.westonsampson.com



MASS AVE EXISTING TREE PROTECTION
N.T.S.



MASS AVE BRICK WALK
N.T.S.



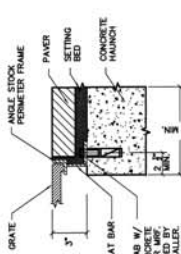
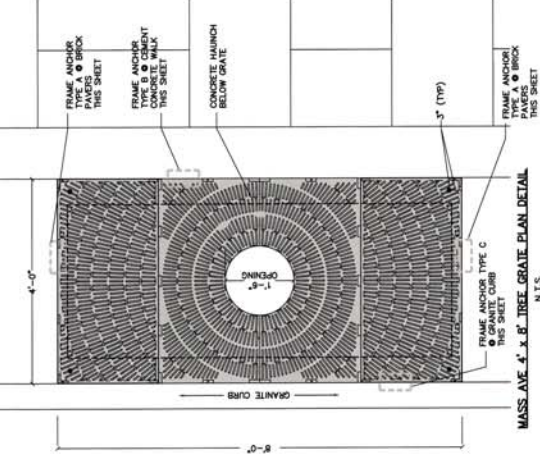
MASS AVE BRICK WALK
N.T.S.

RAISED CROSSWALK DETAILS
N.T.S.

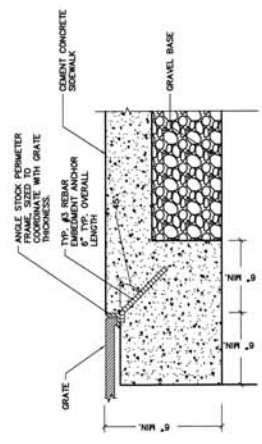
NOTE: PLEASE SEE CITY OF CAMBRIDGE STANDARD SPECIFICATIONS AND DETAILS FOR DRAINAGE DETAILS



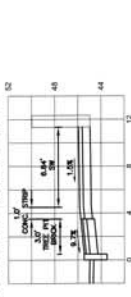
- NOTES:
 1. GRATE TO MEET ADA REQUIREMENTS FOR SLOT OPENINGS
 2. CENTER 4" OF TREE GRATE ON EXISTING TREE. ALL OTHERS TO REMAIN UNDER GRATE.



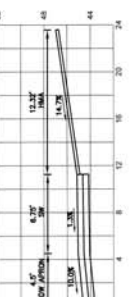
MASS AVE. TREE GRATE ANCHOR (TYPE A) & BRICK PAVERS
 N.T.S.



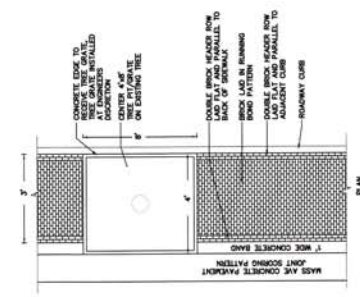
SECTION A-A (SEE SHEET M-1)



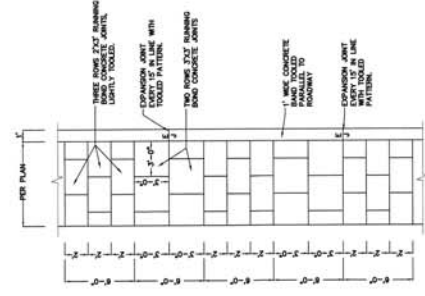
SECTION B-B (SEE SHEET M-1)



MASS AVE. CONCRETE PAVEMENT SCORE JOINT PATTERN
 N.T.S.



MASS AVE. BRICK PAVING PATTERN W/TREE PIT
 N.T.S.



MASS AVE. TREE GRATE ANCHOR (TYPE C) & GRANITE CURB
 N.T.S.