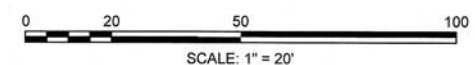


PROJECT BEGIN
STA 20+12.14
N2963825.9954
E756172.1089

- NOTES:
1. ALL EXISTING DRAINAGE, SANITARY, WATER AND ANY OTHER MUNICIPAL UTILITY CASTING SHALL BE ADJUSTED TO GRADE BY THE CONTRACTOR.
 2. ALL EXISTING PRIVATE UTILITY (GAS, ELECTRIC, COMMUNICATIONS, ETC.) CASTINGS SHALL BE ADJUSTED TO GRADE BY THEIR RESPECTIVE UTILITY COMPANY. THE CONTRACTOR SHALL COORDINATE WORK WITH PRIVATE UTILITY COMPANIES.
 3. ALL UTILITY POLES SHALL BE RETAINED.
 4. ALL EXISTING TREES SHALL BE RETAINED AND PROTECTED DURING CONSTRUCTION UNLESS OTHERWISE NOTED.
 5. FOR CURB GEOMETRY AND BASELINE TIES SEE SHEET 32.
 6. FOR PROPOSED GRADING SEE SHEET 39.
 7. FOR DRAINAGE STRUCTURE AND PIPE TABLES SEE SHEET 46.
 8. FOR SIGNAGE AND PAVEMENT MARKINGS SEE SHEET 47.
 9. FOR WHEELCHAIR RAMP AND DRIVEWAY DETAILS SEE SHEETS 60 AND 61.



Richard A. Azzalina
7/26/17

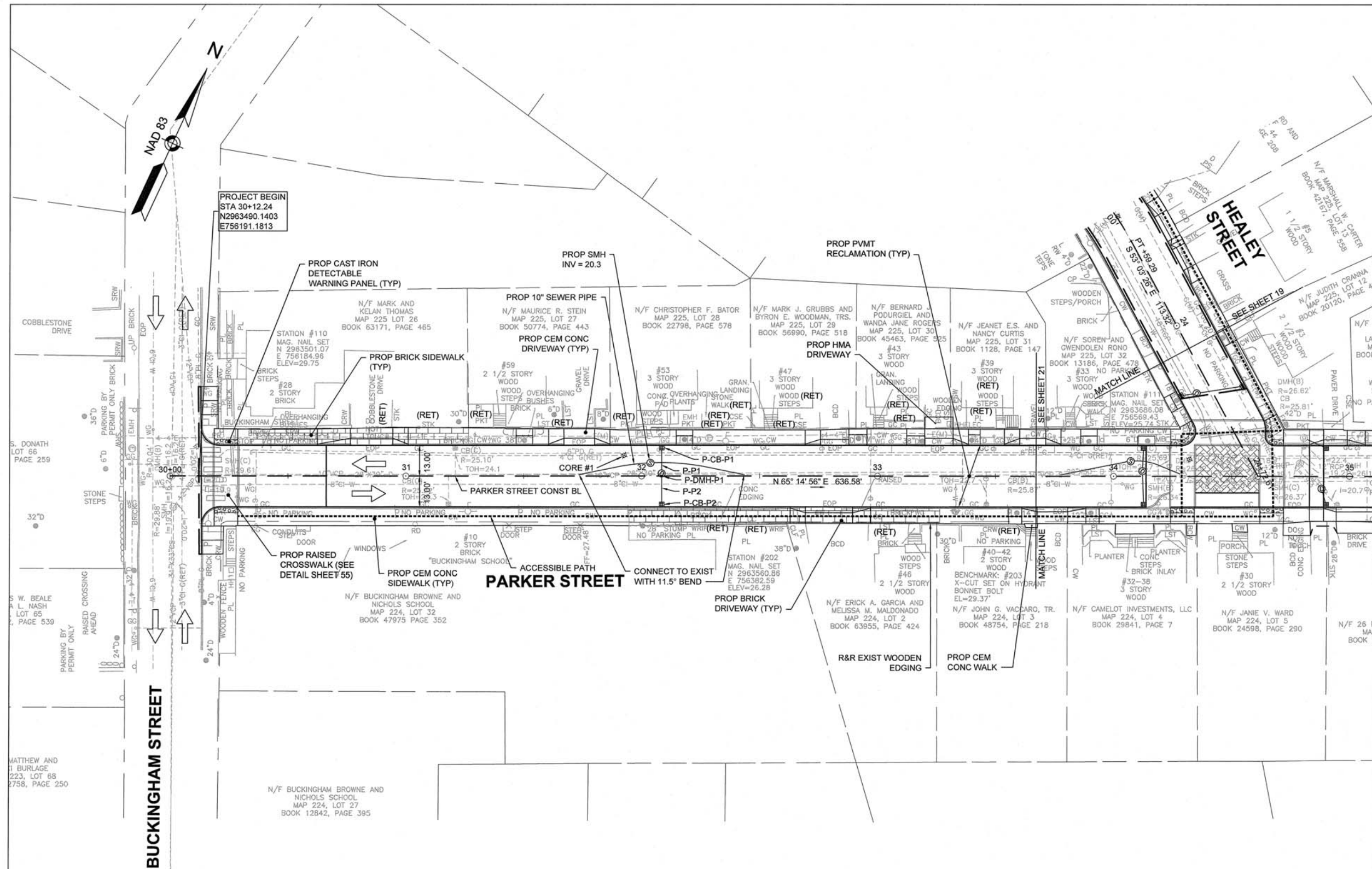
| Revision | By | Appd. | Y/M/D |
|-----------------|-----|-------|----------|
| A | CSS | RAA | 17.07.19 |
| 100% SUBMISSION | | | |
| Issued | | | |
| Permit-Seal | | | |

Client/Project
Cambridge Department of Public Works

Chapter 90 Contract 22
Healey St., Parker St. & Dudley St.
Cambridge, MA

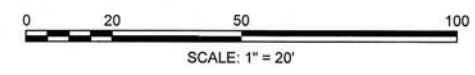
Title
CONSTRUCTION PLAN
HEALEY STREET
PART 1 OF 1

| Project No. | Scale | |
|-------------|----------|----------|
| 179410352 | 1" = 20' | |
| Drawing No. | Sheet | Revision |
| | | |



PROJECT BEGIN
STA 30+12.24
N2963490.1403
E756191.1813

- NOTES:
1. ALL EXISTING DRAINAGE, SANITARY, WATER AND ANY OTHER MUNICIPAL UTILITY CASTING SHALL BE ADJUSTED TO GRADE BY THE CONTRACTOR.
 2. ALL EXISTING PRIVATE UTILITY (GAS, ELECTRIC, COMMUNICATIONS, ETC.) CASTINGS SHALL BE ADJUSTED TO GRADE BY THEIR RESPECTIVE UTILITY COMPANY. THE CONTRACTOR SHALL COORDINATE WORK WITH PRIVATE UTILITY COMPANIES.
 3. ALL UTILITY POLES SHALL BE RETAINED.
 4. ALL EXISTING TREES SHALL BE RETAINED AND PROTECTED DURING CONSTRUCTION UNLESS OTHERWISE NOTED.
 5. FOR CURB GEOMETRY AND BASELINE TIES SEE SHEET 33.
 6. FOR PROPOSED GRADING SEE SHEET 40.
 7. FOR DRAINAGE STRUCTURE AND PIPE TABLES SEE SHEET 46.
 8. FOR SIGNAGE AND PAVEMENT MARKINGS SEE SHEET 48.
 9. FOR WHEELCHAIR RAMP AND DRIVEWAY DETAILS SEE SHEETS 60 AND 61.



| Revision | By | Appd. | YYMMDD |
|----------|-----------------|-------|--------------|
| A | 100% SUBMISSION | CSS | RAA 17/07/19 |

Issued By Appd. YYMMDD

Permit-Seal
File Name: parker_healey_const_plans.dwg
Dwn: BTR J.C. BTR
Chkd: J.C. Dgn: BTR
14.05.14
YYMMDD



Client/Project
Cambridge Department of Public Works

Chapter 90 Contract 22
Healey St., Parker St. & Dudley St.
Cambridge, MA

Title
PARKER STREET
CONSTRUCTION PLAN
PART 1 OF 2

Project No. 179410352 Scale 1" = 20'
Drawing No. Sheet Revision



Richard A. Azzalina
7/26/17

| Revision | By | Appd. | YYMMDD |
|----------|----|-------|--------|
| | | | |
| | | | |
| | | | |
| | | | |
| | | | |
| | | | |
| | | | |
| | | | |
| | | | |

Issued By Appd. YYMMDD

File Name: parker_healey_const_plans.dwg BTR JC BTR 16.05.16
Dwn. Chkd. Dgnr. YYMMDD

Permit-Seal

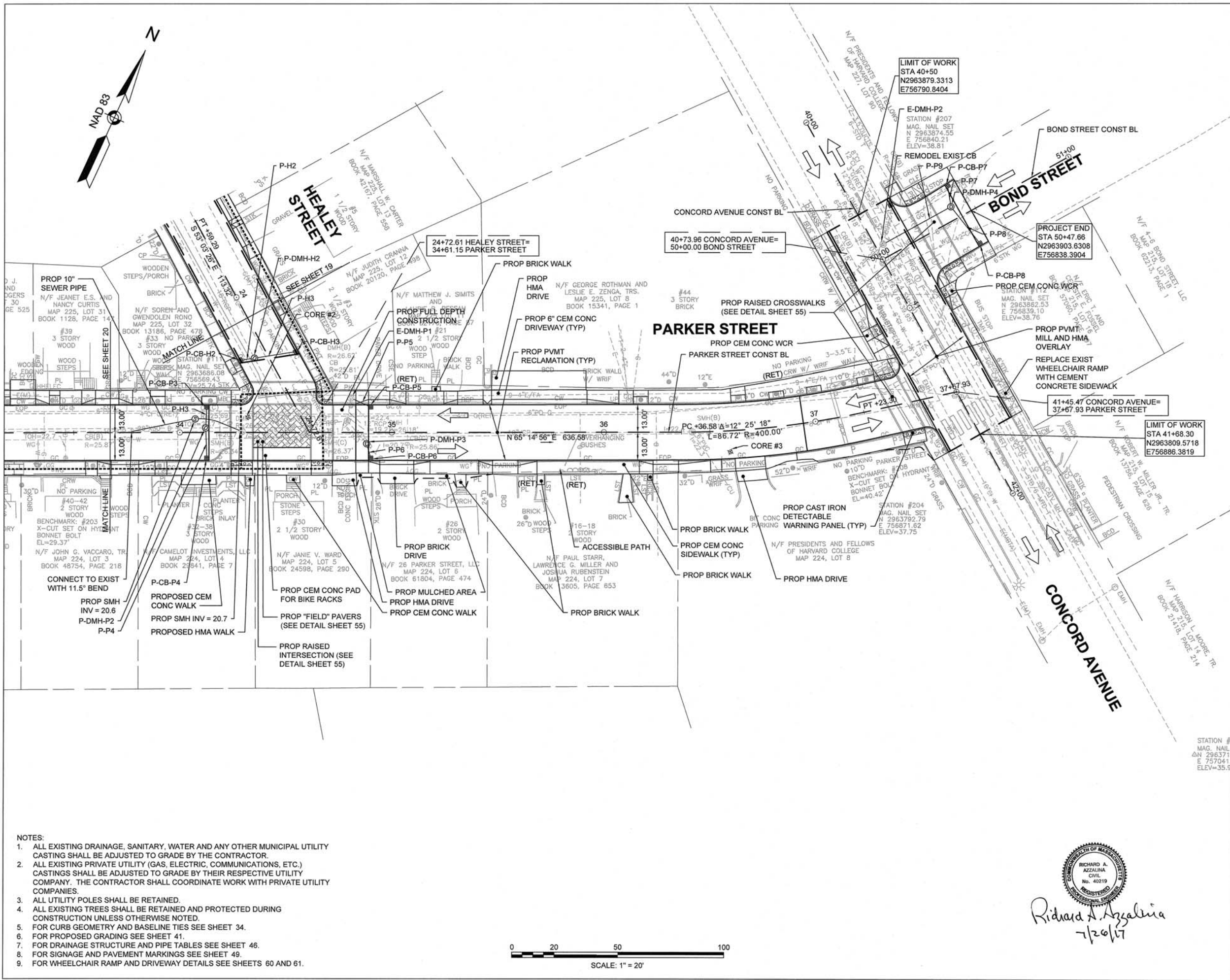


Client/Project
Cambridge Department of Public Works

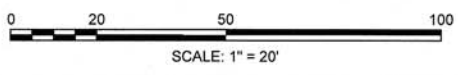
Chapter 90 Contract 22
Healey St., Parker St. & Dudley St.
Cambridge, MA

Title
PARKER STREET
CONSTRUCTION PLAN
PART 2 OF 2

Project No. 179410352 Scale 1" = 20'
Drawing No. Sheet Revision



- NOTES:
1. ALL EXISTING DRAINAGE, SANITARY, WATER AND ANY OTHER MUNICIPAL UTILITY CASTING SHALL BE ADJUSTED TO GRADE BY THE CONTRACTOR.
 2. ALL EXISTING PRIVATE UTILITY (GAS, ELECTRIC, COMMUNICATIONS, ETC.) CASTINGS SHALL BE ADJUSTED TO GRADE BY THEIR RESPECTIVE UTILITY COMPANY. THE CONTRACTOR SHALL COORDINATE WORK WITH PRIVATE UTILITY COMPANIES.
 3. ALL UTILITY POLES SHALL BE RETAINED.
 4. ALL EXISTING TREES SHALL BE RETAINED AND PROTECTED DURING CONSTRUCTION UNLESS OTHERWISE NOTED.
 5. FOR CURB GEOMETRY AND BASELINE TIES SEE SHEET 34.
 6. FOR PROPOSED GRADING SEE SHEET 41.
 7. FOR DRAINAGE STRUCTURE AND PIPE TABLES SEE SHEET 46.
 8. FOR SIGNAGE AND PAVEMENT MARKINGS SEE SHEET 49.
 9. FOR WHEELCHAIR RAMP AND DRIVEWAY DETAILS SEE SHEETS 60 AND 61.



Richard A. Azzalina
7/26/17